

1997

College of Health and Public Affairs annual report, 1996-1997

University of Central Florida. College of Health and Public Affairs

Find similar works at: <https://stars.library.ucf.edu/researchactivities>
University of Central Florida Libraries <http://library.ucf.edu>

This Report is brought to you for free and open access by the University Archives at STARS. It has been accepted for inclusion in Research Activities & Annual Reports by an authorized administrator of STARS. For more information, please contact STARS@ucf.edu.

Recommended Citation

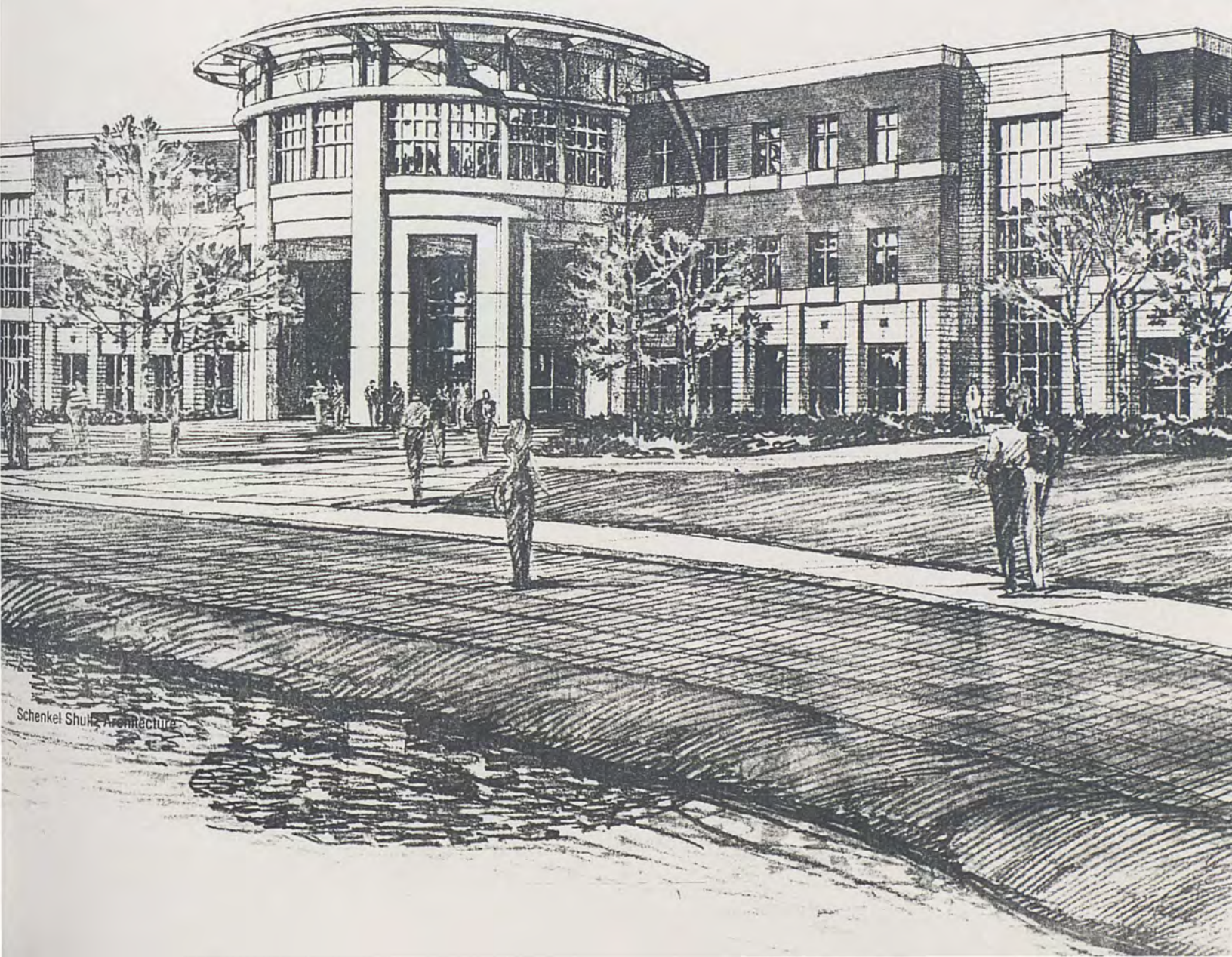
University of Central Florida. College of Health and Public Affairs, "College of Health and Public Affairs annual report, 1996-1997" (1997). *Research Activities & Annual Reports*. 53.
<https://stars.library.ucf.edu/researchactivities/53>

ANNUAL REPORT
1996 - 1997



University of
**Central
Florida**

COLLEGE OF HEALTH AND PUBLIC AFFAIRS



Schenkel Shultz Architecture

TABLE OF CONTENTS

◆ MESSAGE FROM THE DEAN	1
◆ ACCESS TO EXCELLENCE GOALS	2
◆ DEPARTMENTAL SUMMARIES	3
◆ OUTSTANDING ALUMNI	8
◆ COLLEGE DEVELOPMENT OFFICE	9
◆ COMMUNITY PARTNERSHIPS	9
◆ COLLEGE RESEARCH OFFICE	10
◆ COMMUNITY OUTREACH	11
◆ FUTURE DIRECTION	12
◆ FACULTY RESEARCH AREAS	14
◆ FACULTY LISTING	15
◆ FACULTY PUBLICATIONS	16

COLLEGE OF HEALTH & PUBLIC AFFAIRS



DEAN BELINDA R. MCCARTHY

"The essential ingredients in creating ACCESS to Excellence are exceptional students, an outstanding faculty, and an environment that supports learning and the educational experience."



JOYCE DÖRNER
ASSISTANT DEAN



MICHAEL SWEENEY
ASSOCIATE DEAN

MESSAGE FROM THE DEAN

.....

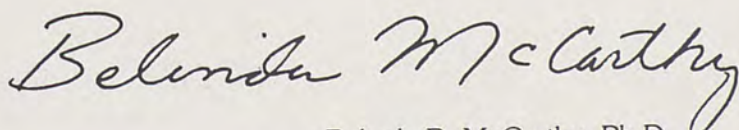
It hardly seems possible that seven years have passed since I came to UCF as dean of the youngest college within the university. The College of Health and Public Affairs (COHPA), newly created in 1990, had only begun to realize its potential and unique identity. Through the efforts of a great group of faculty, the college has evolved its programs, research, and service activities into one cohesive organizational unit. We all take pride in our mutual accomplishments and the growth and development of our many programs. Our students have grown from 1500 to almost 6000. Our faculty has increased from 60 to more than 130 members. We have become the fastest growing college in the university, leading the way in education, research, and community partnerships.

While rapid growth is a positive factor, it also brings a host of considerations for faculty and students. Classroom space, revised curriculums, appropriate internships, and multiple community partnerships are only a few of the issues we have worked to balance.

- ✦ Ground breaking for the first of two new COHPA buildings took place in May. At present, we have five campus and off-campus locations for our seven departments. Each year, some part of these programs overflows into new space.
- ✦ Nursing has begun a major initiative to bring clinical education beyond the hospital to the community. A completely revised curriculum developed by faculty members was approved in June with implementation begun fall 1997.
- ✦ As a result of funding from Red Lobster and Olive Garden Restaurants through the Darden Restaurants Foundation, Health Services Administration faculty designed and offered a series of management seminars for agency administrators.
- ✦ The university issued approval for The Institute on Diagnostics and Drug Development. This institute represents a multidisciplinary effort between the Departments of Molecular Biology and Microbiology and Chemistry.
- ✦ Implementation for the Ph.D. program in Public Affairs has been approved for fall 1998. This program was developed and designed as a response to community interest and will provide executives and mid-level managers with the skills and knowledge they need to administer and lead complex community organizations.

Throughout the past year, our faculty carefully evaluated and established goals reflecting internal priorities, university dictates, and community expectations. As a result of our study, a strategic plan, *Access to Excellence 1996 - 2001* was adopted. This phrase, ACCESS to Excellence, best describes our college and represents the underlying theme of all our efforts. In fact, "ACCESS to Excellence" will be engraved over the entry way of our new building. We have and we will continue to strive for exactly that - to be a college that gives every willing student access to the very best in education, research, and community service opportunities.

UCF and Central Florida have given all of us in Health and Public Affairs much of which to be proud. We have a wonderful, progressive community and a university clearly approaching greatness. In return, we pledge to provide the leadership, the service, and the educational opportunities to make that greatness a reality.



Belinda R. McCarthy, Ph.D.
Dean and Professor

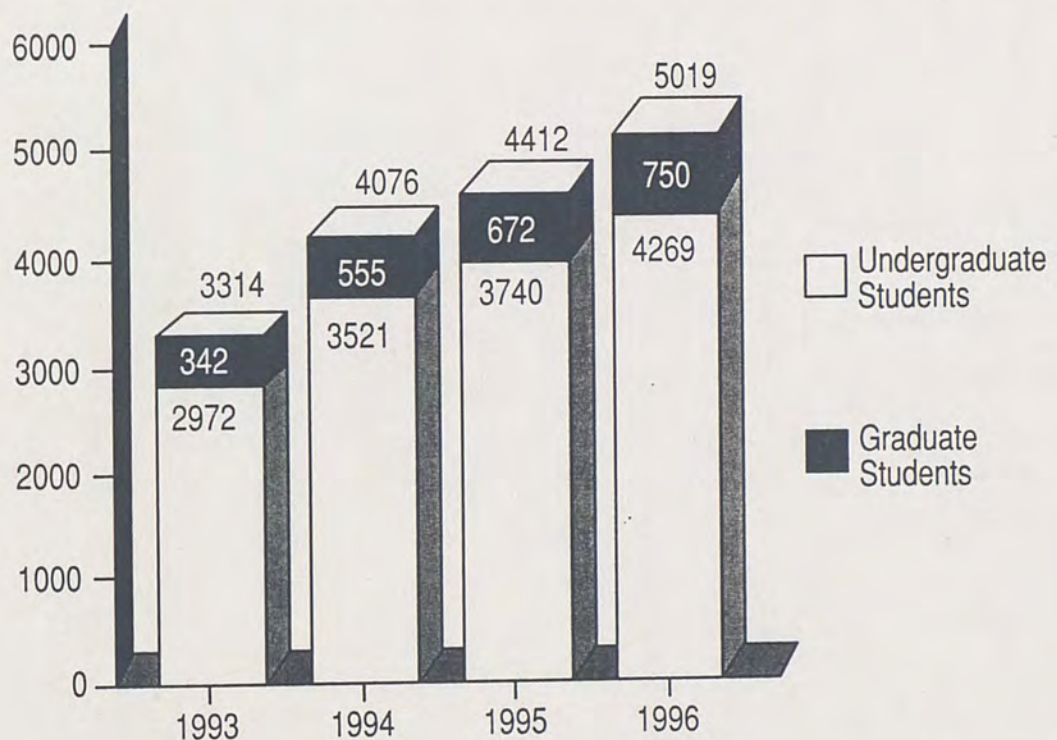
OFFICE

ACCESS TO EXCELLENCE GOALS

The College of Health and Public Affairs' guiding vision includes a commitment to "access to excellence". Established goals reflecting internal priorities as well as those set by the university, were reviewed and updated in the COHPA Strategic Plan 1996-2001. These goals represent our commitment to achieve excellence:

- ✦ Offer the best undergraduate and graduate health and public affairs education in Florida
- ✦ Increase the quality and quantity of research by initiating more extramural funding proposals
- ✦ Update and upgrade technology and computer resources for faculty and students
- ✦ Become more cohesive as a college through interdisciplinary collaborations and recognition of contributions in university and community service
- ✦ Develop a financial plan with efficient and effective use of available funds as well as external fund-raising components
- ✦ Promote communication and recognition of college program excellence through local, state, national, and international sources
- ✦ Become more diverse to reflect the multicultural nature of Central Florida
- ✦ Develop, encourage, and assist the formation of partnerships and collaborations within the community

COHPA STUDENT ENROLLMENT GROWTH



UCF's College of Health and Public Affairs was formed in 1990, and today, it is one of the fastest growing colleges in the State University System. The number of students identifying themselves as COHPA majors continues to increase dramatically. This last year saw a 24% increase in undergraduate majors and a 32% increase for graduate majors.

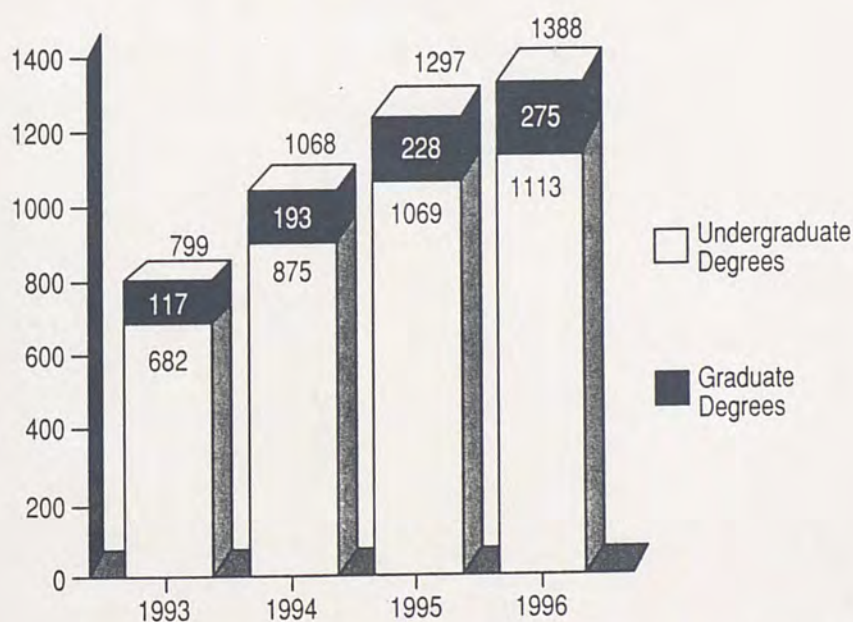
DEPARTMENT OF COMMUNICATIVE DISORDERS

Speech-language pathologists work with infants, toddlers, school-age children, and adults with speech and language disorders. Coursework includes study in normal and abnormal language development, articulation, phonetics, voice disorders, and stuttering. The Communicative Disorders program at UCF offers a Bachelor of Science, a Bachelor of Arts, and a Master of Arts in Speech-Language Pathology. All of the programs produce outstanding clinicians. Students obtain clinical experience on and off campus. Operation of a clinic in the Central Florida Research Park gives local residents low cost services and students direct experience. The student professional association, National Student Speech Hearing Language Association (NSSHLA), is one of the most active, visible, and effective student groups on campus.

The UCF Master of Arts in Speech-Language Pathology requires the equivalent of two years full-time attendance to complete. The program is designed to meet the certification requirements of the American Speech-Language-Hearing Association and licensure for the State of Florida. Students admitted to this program averaged a 3.4 grade point average.

- ◆ As part of UCF's degree program in communicative disorders, the associated clinic provided speech, language, and hearing services to more than 900 impaired, primarily insurance-poor clients from throughout Central Florida.
- ◆ Faculty committed to meeting Florida's public school needs for speech pathologists have plans underway for a multilingual initiative. These plans serve the diversity of children in Central Florida.
- ◆ The formal relationship between the Communicative Disorders Department and the University of Nymegen in the Netherlands and the University of Ghent in Belgium continues to develop. This arrangement will set the stage for exchanges of faculty and students between UCF and several outstanding institutions in Europe.

COHPA DEGREES CONFERRED



The College of Health and Public Affairs offers thirteen undergraduate and seven graduate degree programs. Each department in the college provides professional education, emphasizing the integration of policy and practice.

COHPA

DEPARTMENT OF CRIMINAL JUSTICE AND LEGAL STUDIES

The Department of Criminal Justice and Legal Studies offers two Bachelor of Science programs in Criminal Justice and Legal Studies and a master's degree in Criminal Justice. The undergraduate Criminal Justice program provides students with a broad understanding of agencies and organizations which comprise society's criminal justice system. Internship experiences through agencies such as the Florida Department of Corrections and the U.S. Customs Office offer strong career preparation.

The Legal Studies program examines the principles of law and justice and how they operate in the American legal system. Students also prepare for positions in law offices, corporations, and public agencies. All faculty have law degrees and experience as practitioners.

The Master of Science in Criminal Justice focuses on research, policy, and management issues in the justice system. Students work with faculty and local officials in the examination of community and agency problems.

- ✦ The department and the Florida Department of Law Enforcement cohosted a series of seminars on topics such as Heroin in Central Florida and Responding to Civil Disturbances.
- ✦ Faculty developed assessment centers for the promotion of police officers in Brevard County and assisted with the selection process of local police chiefs.
- ✦ Faculty undertook benchmark studies with the Orange County Corrections Department and the Division of Juvenile Justice on the effectiveness of correctional programs.
- ✦ Workshops were provided through the Institute of Government on Workplace Violence.

SCHOOL OF SOCIAL WORK

Social Work programs prepare students for practice in a variety of social agencies. The Bachelor of Social Work program and the Master of Social Work program utilize classroom education, "real world" experience, field placements, and internships with over one hundred agencies in Central Florida. The School of Social Work is one of the leading programs in the state of Florida with continued enrollment growth.

- ✦ Social Work faculty received additional funds to expand the creative UCF-Juvenile Assessment Intern Unit. This collaborative project trains UCF students in the delivery of assessments and mental health services to juvenile offenders.
- ✦ Faculty conducted a needs assessment for The Heart of Florida United Way, which resulted in a better match between community issues and resource allocations.
- ✦ Students traveled to Cuernavaca, Mexico, where they participated in a course that emphasized the practice of social work in an international setting. Many of the educational priorities and cultural practices observed by the students influence the practice of social work within the Central Florida Hispanic community.
- ✦ Faculty served on a number of national social work committees. Service with the National Association of Social Workers included involvement with the Communications Committee, Editorial Committee for the Encyclopedia of Social Work, and Editor, *Health Care in Social Work*.

DEPARTMENT OF MOLECULAR BIOLOGY AND MICROBIOLOGY

The Department of Molecular Biology and Microbiology offers Bachelor degrees in Molecular Biology and Microbiology and in Medical Laboratory Sciences. The Bachelor of Science in Molecular Biology and Microbiology prepares students for microbiological and molecular biological positions in research laboratories, local and state laboratories, and industrial laboratories.

The Bachelor of Science in Medical Laboratory Sciences gives students a thorough background in physical and biological sciences. As medical technologists, graduates provide physicians with valuable information about patient body tissues, blood, and other fluids. Upon graduation, students are eligible for the national certification exam and the state of Florida licensure examination.

The Master of Science in Molecular Biology and Microbiology offers a variety of research options. Graduate students are involved in both teaching and research with internationally known faculty. Malaria, Crohn's Disease, spinal cord injuries, leukemia, breast and prostate cancer are just a few of the faculty research projects.

- ◆ Students of the Medical Laboratory Sciences program received a 100% pass rate for the 1996 American Society of Clinical Pathologists Board of Registry Examination.
- ◆ Faculty prepared a joint proposal with the Department of Chemistry for the Institute on Diagnostics and Drug Development. The university allocated funding in the amount of \$1.5 million over the next three years to develop the institute.
- ◆ Funded grants exceeded \$1 million dollars from organizations such as the National Institute of Health and the Burroughs Wellcome Trust.
- ◆ Faculty prepared a proposal for an interdisciplinary doctoral program in Biomolecular Sciences. This proposal has been submitted for consideration in the State University System Master Plan.

DEPARTMENT OF PUBLIC ADMINISTRATION

To keep current with the ever-changing arena of public administration, the department maintains strong professional links with local, state, and federal governments. Faculty involvement through research, studies, and service projects ensure class content that addresses current issues. Both the bachelor's degree and the master's degree programs provide flexible career opportunities to students and working professionals. Due to its versatility and excellent standards, the MPA program is the largest in the state of Florida and one of the largest in the southeastern United States.

- ◆ The Eastern Europe Linkage Institute housed in the Department of Public Administration assists people from Eastern and Central Europe with educational training in the United States. Several groups of government leaders from the Republic of Moldova shadowed managers in Orange County Public Schools.
- ◆ The department made extensive outreach efforts to new groups of public service professionals including fire science and emergency management personnel. Fire service coursework began fall 1997.
- ◆ Fifty-six students interned in Central Florida government and non-profit organizations during 1996-1997. Placements included the Department of Juvenile Justice, the Office of Management and Budget (Orange County), and the Economic Development Commission.

SCHOOL OF NURSING

.....

The Nursing program at UCF offers a Bachelor of Science in Nursing and a Master of Science in Nursing. Nurses licensed in Florida are eligible for admission into the RN to BSN program. This past year, the undergraduate program received 549 applications for 70 available openings.

New methods of technology increased availability of courses for students. The first on-line nursing course was offered in spring 1997. In addition, the university funded a two year RN to BSN on-line program.

The Master of Science program provides advanced training for the Family Nurse Practitioner and Nurse Administrator. As the needs of the community evolve, additional master's degree programs will be developed based on the input of nursing professionals throughout the region. The first class of master's students graduated in fall 1996.

- ◆ Faculty completely revised the undergraduate nursing curriculum. Nearly half of the clinical education components of the undergraduate program moved to community sites in fall 1997. This revolutionary approach to nursing education is the first of its kind to be implemented in the state of Florida. Community site partners are: Orange County School Systems, City of Orlando, Columbia Park Hospital, Central Florida Community Health Center, and Brevard Housing Authority.
- ◆ The UCF Community Nursing Center in Brevard County received a second contract and funding to coordinate Healthy Start Services. This program focuses on provision and coordination of maternal-infant services for at-risk pregnant women in low income neighborhoods as identified by government and private sources.
- ◆ The School of Nursing fully implemented the RN to BSN program at Lake Sumter Community College. Registered nurses licensed in the state of Florida are eligible. The RN to MSN program began fall 1997 on the Daytona Beach campus.

INSTITUTE OF GOVERNMENT

.....

The Florida Institute of Government at the University of Central Florida celebrated its 15th anniversary this year. The Institute of Government (IOG) established within the College of Health and Public Affairs moved to a new location at the UCF Downtown Academic Center. The IOG is a full-service center capable of meeting most of the training and technical assistance needs of the local governmental community. More than 5,700 individuals participated in IOG programs this past year. Forty-seven counties and 200 cities within the state utilized the institute's services. In addition, non-profit agencies such as the Grant Professionals Network and the Legal Aid Society of the Orange County Bar Association participated.

Collaboration, the key to success, underlies all ongoing relationships. The Florida Association of Code Enforcement, the Florida Association of Occupational Licensing Officials, the Association of Pretrial Professionals of Florida, the Florida League of Cities, and the Florida Counties Foundation have expanded IOG service areas to the entire state. Emphasis on experiential training and interaction with instructors and classmates remain priority concepts.

DEPARTMENT OF HEALTH PROFESSIONS AND PHYSICAL THERAPY

.....

Healthcare is the fastest growing industry in the country and student enrollment for this department reflects that trend. Graduates from these programs have increased 417% since 1991. The Department of Health Professions and Physical Therapy was formed in 1996 bringing together Health Services Administration, Health Information Management, Physical Therapy, Cardiopulmonary Sciences, and Radiologic Sciences. These five undergraduate programs prepare students for clinical and administrative positions in an ever-widening variety of healthcare settings.

The master's degree in Health Services Administration focuses on meeting the research and service needs of the local community. Graduate students gain an understanding of both the clinical and business areas of the healthcare industry in order to face the challenges of healthcare reform. Practicum experiences range from acute care facilities to long term care agencies.

- ◆ Faculty in Health Services Administration offered training to 52 non-profit managers. This program was funded by Red Lobster and The Olive Garden through the Darden Restaurants Foundation.
- ◆ All graduates who sat for their licensing examinations in their respective disciplines (Cardiopulmonary Sciences, Health Information Management, Physical Therapy, Radiologic Sciences) passed.
- ◆ The Certificate in Healthcare Management program and the Certificate in Risk Management program offered students and community healthcare professionals opportunities for contact hours and certification in these areas.
- ◆ Over 120 community sites were utilized for internships and practicums.

LEADERSHIP UCF

.....

Recognized by the American Association of State Colleges and Universities, Leadership UCF serves as a national model of student leadership training programs. The unique collaboration between UCF and members of the Central Florida business community began with Dean McCarthy's personal Leadership Orlando experience. She developed, in partnership with the Greater Orlando Chamber of Commerce, an interdisciplinary credit course which provides leadership development for qualified juniors and seniors. Students travel into the community to learn about local problems, challenges, and issues confronting Central Florida.

This year, the class adopted a two-year project to assess the resources available at the university, examine community issues, and explore ways the university can work collaboratively with the community to address some of these issues. The 1997-1998 Leadership UCF class will review the data collected by the previous class and use it to create a documentary with the help of Channel 24 WMFE-TV for presentation to community leaders.

PHOS

OUTSTANDING ALUMNI

Seven distinguished alumni from the college's schools and departments were chosen as the recipients of the College's Alumni Professional Achievement Awards. These outstanding individuals were honored at Church Street Station in downtown Orlando.

MICROBIOLOGY & MOLECULAR BIOLOGY

Robert Ferguson, '78, Dentist
Walters & Ferguson, D.M.D., P.A.
Winter Park, Florida

CRIMINAL JUSTICE/LEGAL STUDIES

Ray McCleese, '75, Director of Security &
Institutional Management, Region III
Florida Department of Corrections
Orlando, Florida

SOCIAL WORK

Judith Thames, '73, Executive Director
Senior Resource Alliance, Area Agency
on Aging of Central Florida, Inc.
Winter Park, Florida

NURSING

Patricia Lafferty, '86, Graduate Student
UCF School of Nursing
Orlando, Florida

COMMUNICATIVE DISORDERS

Kenyatta Rivers, '88, '90, Assistant Professor
Department of Communicative Disorders
University of Central Florida
Orlando, Florida

HEALTH PROFESSIONS & PHYSICAL THERAPY

Jonathan Waugh, '85, Assistant Professor
Department of Cardiopulmonary
Care Sciences
Georgia State University
Atlanta, Georgia

PUBLIC ADMINISTRATION

Larry Bacon, '72, '89, Deputy Director
of Corrections
Orange County Department
of Corrections
Orlando, Florida



In addition, Patricia Lafferty, '86, and Ray McCleese, '75, were selected as recipients of the university's Alumni Professional Achievement Awards.

Lafferty has been an active volunteer for numerous church, schools, and community agencies. She serves as health projects chair for the Florida Medical Association Alliance.



McCleese, also a committed volunteer, counsels "at-risk" students at several local high schools. He is a frequent speaker, presenting such topics as black history, crime in the community, and drugs among teenagers.

COLLEGE DEVELOPMENT OFFICE

The College of Health and Public Affairs Development Office works with the UCF Foundation and with the dean, chairs, and faculty. The office works to obtain external funding for COHPA projects, build scholarship endowments for graduate and undergraduate students, and solicit major gifts to support the college. Fund raising is about building relationships. It provides a means for alumni and the community to participate in the many exciting things happening with the university's students and faculty. It also is a way for faculty and programs to receive much needed funds to excel in their disciplines.

- ✦ **The Chatlos Foundation, Inc.** pledged \$600,000 to fund an endowment for the School of Nursing. The state of Florida will match this grant with \$420,000, creating a \$1.02 million endowed fund. Once fully funded, proceeds from this endowment will be used to create and maintain a community nursing clinic in a low-income residential community, provide scholarships to graduate and undergraduate nursing students, offset the salary of a professor in minority health issues, and maintain the nursing skills laboratory at the main campus.
- ✦ **The Chesley G. Magruder Foundation, Inc.** awarded the College of Health and Public Affairs \$25,000 to help offset the costs of the third year of the pilot Leadership UCF program.
- ✦ **Central Florida Kidney Center, Inc.** donated \$22,000 to the School of Nursing for undergraduate scholarships and to help equip the nursing skills laboratory.
- ✦ Donors in Lake and Sumter counties continue to support the Lake Sumter RN to BSN program. **Leesburg Regional Medical Center, Florida Hospital Waterman**, and five other organizations contributed \$43,075 toward this program during the fiscal year.
- ✦ **Leesburg Regional Medical Center, Halifax Medical Center, and Columbia Park Medical Center** contributed \$27,000 to the Physical Therapy Program, completing their pledge commitments.

COLLEGE OF HEALTH AND PUBLIC AFFAIRS PARTNERSHIPS - 1996-1997

ACT
 Accu-Care
 Adult Medicine Specialists, Inc.
 AIDS Resource Alliance -& Center at Hillcrest
 Alachua General Hospital
 All Children's Hospital
 The Alliance
 Aloma Elementary School
 Altamonte Springs Police Dept.
 Alzheimer's Respite Care Program
 Alzheimer Resource Center, Inc.
 American Cancer Society
 American Transitional Care @ Rio Pinar
 Anderson Elementary School
 Anthony House
 Apopka Chamber of Commerce
 Arbors of Orlando Sub-Acute Care Center
 Area Agency on Aging
 Arnold Palmer Hospital for Women & Children

ATC
 B.E.T.A.
 Baptist Hospital
 Barbara Brownfield, ARNP
 Baty Group
 Bayonet Point/Hudson Medical Center
 Bethesda Memorial Hospital
 Beverly Enterprises
 Big Brothers/Big Sisters of Brevard
 Bobbie Bodnar-Hanson, ARNP
 Boca Raton Community Hospital
 Boys Town—Oviedo & Sanford
 Brain Injury Rehabilitation Center
 Brevard County—
 Board of County Commissioners
 Community College

Correctional Institution
 Emergency Management
 Office of Human Resources
 Public Safety
 Public Schools
 Sheriff's Office
 Brevard Guardian Services, Inc.
 Brevard Hospice
 Brevard Social Services
 Brighton Garden
 Broward General Medical Center
 Carrie Carson, CNM
 Cape Canaveral Hospital
 CareLink Management, Inc.
 Carol Biery, ARNP
 Cedars Medical Center
 Centaur
 Center for Diagnostic Imaging (MRI)
 Center for Drug Free Living
 Center for Health and Wellness of Oviedo
 Center for Infertility & Reproductive Medicine
 Center for Outreach Credit
 Central Brevard Humane Society
 Central Florida Blood Bank
 Central Florida Regional Hospital
 Central Florida Regional Plan. Council
 Central Healthcare Service, Inc.
 Central Park Village
 Charter Hospital of Kissimmee
 Children's Home Society
 Kissimmee
 Melbourne (moved from Rockledge)
 Orlando
 Sanford
 Wavecrest, Ft. Pierce
 Cigna Health Care

Circles of Care—Harbor Pines
 Circles of Care—Rockledge
 Citrus Memorial Hospital
 City of Altamonte Springs Leisure Services
 City of Apopka Chamber of Commerce
 City of Casselberry
 City of Daytona Beach Community Development
 City of Lake Mary
 City of Melbourne
 City of Orlando Code Enforcement
 City of Orlando Community & Youth
 City of Orlando Transportation Plan.
 City of Orlando, Strategic Plan.
 City of Port Orange
 City of Rockledge
 City of Sanford
 City of St. Cloud
 City of Tavares
 City of Titusville Fire and Emergency Services
 City of Winter Garden Commission of Mid-Florida
 Clinical Diagnostic Systems
 Coalition for the Homeless
 Cocoa Police Department
 Columbia Medical Center —
 Daytona Beach
 Sanford
 Osceola
 Columbia Park Hospital Lucerne
 Columbia Park Medical Center—Orlando,
 Longwood
 Community Care for the Elderly
 Community College Respiratory Therapy
 Programs
 Community Coordinated Care for Children (4c)
 Continued on page 10

COHPA

Created in October 1996, the Research Office in the College of Health and Public Affairs facilitates research, demonstration, and community service projects among college experts, community-based organizations, and government agencies. The office is responsible for locating funding sources, working with faculty on project development, and building partnerships.

College experts work with agencies on projects including consultation and training, program planning and evaluation, needs assessments, strategic planning, policy implementation and monitoring, quality assurance reviews, and research studies. Projects for 1996-97 include:

<u>Title</u>	<u>Agency</u>
• Needs Study Supplemental Grant	Heart of Florida United Way
• Citizen Satisfaction Survey	Orange County Expressway Authority
• Evaluation: Community Based Services	Senior Resource Alliance
• Antisera Production to C. Kutcherii II.	Haskell Labs
• Evaluation: Service Enhancement	Osceola Council on Aging
• Evaluation: Community Coalition	Orange County Healthy Start Coalition
• Community-Based Nursing	AHEC
• Social Work: Field Education	AHEC
• Evaluation: Juvenile Justice Processing in Florida	State Juvenile Justice Advisory Board
• Community Initiative: Foster Care	State of Florida Department of Children & Families
• Public Administration-Community Link: Florida/Moldova	USIA
• Family Nurse Practitioner Program	Federal: Health and Human Services Department
• Evaluation: Community Partnerships Inc.	The Center For Drug-Free Living,
• Research: Juvenile Transfers to Criminal Court	State Juvenile Justice Advisory Board
• Evaluation: Orange County Corrections Division	Orange County Corrections
• Juvenile Assessment Center Internship Program	Human Services Associates, Inc.

COLLEGE OF HEALTH AND PUBLIC AFFAIRS PARTNERSHIPS CONTINUED

Community Health Center, Apopka	Div. of Blind	Ilona Sheplan, ARNP
Community Health Purchasing Alliance	Florida Dept. of Law Enforcement	Imperial Point Medical Center
Community Service Center	Florida Heart Group Cardiology Center	Indian River Center
Comprehensive Outpatient Rehabilitation Facility	Florida Hospital —	Indian River County School
Contracting Division, US Army South	East Orlando (Orlando)	Indian River Memorial Hospital
Coopers and Lybrand	North (Altamonte)	Inegrated Health Services
CPC Hospital Palm Bay	South (Orlando)	Institute of Government
Court Alternatives	Volusia (Orange City)	Interlachen Pediatric
Crisis Services of Brevard	Waterman (Eustis)	James A. Haley Veteran's Admin. Hospital
Crosswinds Youth Services	Florida Hospital Tumor Registry	Jewett Orthopaedic Clinical
Daytona Beach Easter Seals	Florida Living Nursing Center	Joan Farmer, ARNP
Daytona International Airport	Florida Manor Nursing Home	Jupiter Hospital
Devereux Foundation—Orlando	Florida Marine Patrol	Juvenile Assessment Center
Devereux of Florida—Melbourne	Florida Mental Health Institute	Juvenile Service Program Inc. Melbourne
Dictaphone Corporation	Florida Sheriff Youth Rance	Karen O'Hern, PNP
District 12—Daytona Beach	Florida United Methodist Children's Home	Kids for Life
Diversion Service	Gary Mezo, ARNP	Kissimmee Utility Authority
Doctor's Hospital	Geffen Cancer Center—Vero Beach	La Armistad Foundation
Donna Brown & Associates	Give Kids the World	Lake County
Dr. Miriam Finegold	Good Samaritan Hospital	Lake Mary Police Department
Drug Enforcement Administration	Great Oaks Village	Lakeland Regional Medical Center
Dynamic Health Care Technologies	Green House Family Counseling & Educational Center	Lakeside Alternatives—Orlando
East Central Florida Regional Planning Council	Grove Counseling Center—Sanford	Lakewood Adult Care Center
Easter Seal Early Intervention Center	Guardian Ad Litem Program, Osceola County	Largo Medical Center Hospital
Economic Development Commission	Halifax Hospital	Lee County Board of Commissioners
Edgewater at Waterman	Health Advantage Network	Lee Memorial Hospital
EG&G Florida, Inc.	HealthSouth Rehabilitation	Leesburg Regional Medical Hospital
Environmental Permitting Agent	Heart of Florida United Way	Longwood Police Department
ESTEEM for Florida Youth, Inc.	Helen Ellis Memorial Hospital	Lutheran Haven Nursing Home
Eustis Main Street, Inc.	Hernando County Sheriff's Office	Lutheran Towers
Eustis Speech & Language Center	Hillsborough County	Lynne Miner, CNM
Family Birth Center	Hispanic Business Initiative Fund	Maitland Police Department
Family Counseling Center	Holmes Regional Medical Center	Maitland South Seminole—Chamber of Commerce
Family Plus	Home Health Professional Service	Manatee Memorial Hospital
Family Services Program, Great Oaks Village,	Hope & Help Center of Central Florida	Marge Mayer, ARNP
Youth Shelter—Orlando	Hospice of Central Florida (Orlando)	Marion County Sheriff's Department
Federal US Probation Office	Hospice of Marion County	Marion Detention Home
First Health	House Next Door	Martin Memorial Hospital
FL ST Legislature/ST Representative Office	Human Service Council	Matthews Orthopedic Clinic
Florida Department of Corrections	Humana Hospital	
Florida Dept. of Labor & Employment Security,		

Continued on page 11

COMMUNITY OUTREACH

.....

UCF DOWNTOWN ACADEMIC CENTER

The UCF Downtown Academic Center, located at 36 W. Pine Street, opened its doors for the first time last fall. The College of Health and Public Affairs sponsored 90% of the courses taught at the center for fall and spring semesters. With 10,000 federal, state, county, and city employees in the downtown area, the center provides an ideal location for COHPA community interaction through classes, seminars, and workshops. The departments of Criminal Justice, Legal Studies, Social Work, and Public Administration maintain permanent offices with faculty at the center teaching classes, conducting research, and advising students. The Institute of Government also is housed at the center offering a wide range of instructional courses and certificate programs.

FOCUS BREAKFAST

The Department of Molecular Biology and Microbiology from COHPA and the Department of Chemistry from the College of Arts and Sciences were featured at President John Hitt's Focus on Excellence Breakfast in February. Biomedical research underway at UCF includes development of diagnostic techniques and drug therapies for many common injuries and diseases. Malaria, Crohn's Disease, spinal cord injuries, leukemia, breast and prostate cancer are just a few of the disorders that are the subject of ongoing research.

Economic implications of this research include the need for production of gene products and delivery systems. By the year 2000, it is estimated that biotechnology will be a \$50 billion per year industry. The Central Florida Research Park offers many advantages for economic growth.

POLICY FORUM

More than one hundred experts, government staff, and elected officials gathered in January at the UCF Downtown Academic Center for a policy forum jointly hosted by State Representative Bob Brooks (District 35) and the College of Health and Public Affairs. Local and state officials in Orange, Seminole, Osceola, and Volusia counties were invited to the forum which highlighted policy and planning expertise in the areas of health administration, social welfare, government, and criminal justice. A *Public Policy Expertise and Resource Guide* profiling COHPA faculty members was distributed at the meeting. To request a copy of the resource guide, please contact Barbara Howell, grants and contracts development officer at (407) 823-3914.

COLLEGE OF HEALTH AND PUBLIC AFFAIRS PARTNERSHIPS CONTINUED

.....

Maxim Health Care
McDill Air Force Base
M.D. Anderson
Mease Hospital and Clinic
Memorial Hospital —
 Hollywood (Hollywood)
 West Volusia (Deland)
Metro Orlando—Economic Development
Miami Children's Hospital
Miami VA Medical Center
Minority Student Services
Morton Plant-Mease Hospital
Munroe Regional Medical Center
Muscular Dystrophy Association
Nancy Silva, ARNP
Naples Community Hospital
Navy Family Service (covered by the VA agreement)
National Institute of Ethics
National Managed Care

New Horizons Program (Center for Drug Free Living)
No Abuse
Nova Care
Oak Hill Hospital
Ocala Police Department
Ocoee Police Department
Office of Management & Budget
Office of the Attorney General, State of Florida
Orange County—
 Board of County Commissioners
 Building Department
 Chairman's Office
 Community Treatment Center
 Corrections
 Dept. of Community Affairs
 Dept. of Human Services Child & Family Services
Emergency Management
Fire/Rescue Division

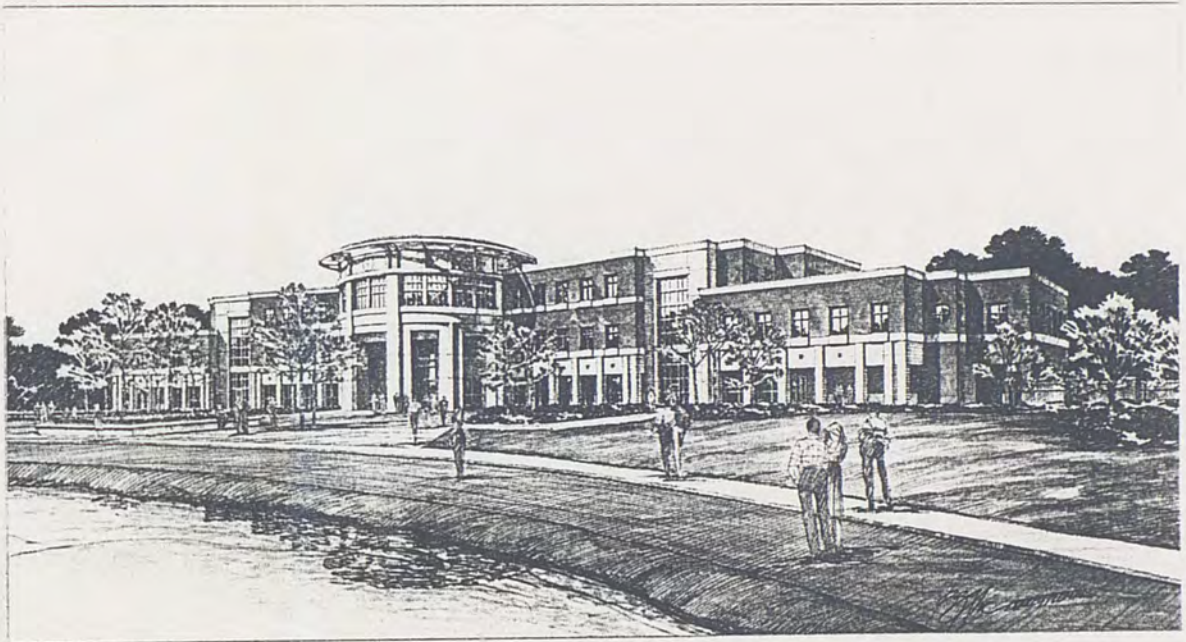
Health Department
Intergovernmental Affairs
Public Schools
Parks and Recreation
Sheriff's Office Service
Social Services
West Orange Chamber of Commerce
Orlando Heart Group
Orlando Fights Back
Orlando Pediatric Multi-therapy Clinic
Orlando Police Department
Orlando Regional Healthcare Foundation
Orlando Regional Healthcare System
Orlando Regional Medical Center
Orlando Science Center
Orlando YMCA
ORMC Start Back Program
Ormond Beach YMCA
Osceola Artificial Kidney

Continued on page 12

NEW BUILDING

Ground breaking for a \$13 million, 94,345 square-foot building took place in May 1997. The new building is designed to create an environment for academic, research, and professional practice programs for the School of Nursing, Physical Therapy Program, Public Administration Department, Criminal Justice/Legal Studies Department, and School of Social Work. Pre-health advising, student services and the administrative offices also will be housed here. This facility will help our college meet the needs of our metropolitan region by producing well-trained graduates to work for the 28 hospitals, 51 nursing homes, and a growing number of home health agencies in the four-county metropolitan Orlando area. The first classes will be offered in spring 1999.

A second building will be completed approximately five years later and will include the Molecular Biology and Microbiology, Health Professions, and Communicative Disorders departments.



The new building has 59,328 square feet of useable space: classroom space (18,000 square feet), teaching laboratories (18,035 square feet), research laboratories (1,250 square feet), and offices (22,043 square feet).

COLLEGE OF HEALTH & PUBLIC AFFAIRS

COLLEGE OF HEALTH AND PUBLIC AFFAIRS PARTNERSHIPS CONTINUED

Osceola County—
 Council on Aging
 Court House
 Planning Department
 Osceola Mental Health— Kissimmee
 Oviedo Police Department
 PACE Center for Girls
 Palm Beach County Schools
 Palm Beach Gardens Medical Center
 Palm Garden
 Palms of Pasadena
 Park Side Lodge
 Parrish Medical Center
 Patricia Nolen, ARNP
 Patrick Air Force Base
 PCA Solutions Inc.
 Peninsula Medical Center
 Physicians Health Corp.

Plantation General Hospital
 Polk County —
 Office of Management and Budget
 Sheriff's Office
 Private Case Management
 Professional Strategics Group
 Prosecution Alternatives for Youth
 PruCare
 Rape Crisis Center
 Regents Park
 Rehab Works
 Rehabilitation Sports Medicine
 Ren Corporation
 Research Institute
 Respi-Care Home Care Services
 Rio Pinar Health and Rehabilitation
 Risk Management Program
 Riverside Hospital

Robin's Nest
 Salvation Army Correctional Services
 Salvation Army D/V, Brevard County
 Same Day Surgicenter
 Sand Lake Hospital
 Sarasota Memorial
 Sea Pines Rehabilitation Hospital
 Seminole Community —
 Mental Center
 Better Living for Seniors
 Public Schools
 Sheriff's Office
 Senior Care
 Seniors First
 Shands Home Care of Brevard
 Shands Teaching Hospital
 Shawn Lindberg/Dr. G. Jimenez

Continued on page 13

OUR FUTURE

.....

UNIQUE PH.D. PROGRAM

After eight years of planning, an innovative interdisciplinary doctoral program in Public Affairs has been approved by the Board of Regents of the State University System of Florida. The program brings together four disciplines that address important and interrelated social problems that confront all communities. Concentrations in public administration, criminal justice, health services administration, and social work form the foundation. The basic philosophy behind this program rests on the premise that through integration of knowledge bases and intervention approaches in these four areas, more efficient and effective resolutions to social problems can be achieved.

Enthusiastic letters of endorsement received from more than 450 alumni and students in the community indicate a tremendous need and interest for this unique program. Admission deadlines are set for March 1, 1998 with classes beginning fall 1998.

DRUG DISCOVERY INSTITUTE

A new institute under development at UCF represents a joint research effort between the Department of Chemistry and the Department of Molecular and Microbiology. The Institute for Diagnostic and Drug Development will focus on discovering, designing, developing, and testing drugs to fight cancer, cardiovascular disease, infectious diseases, and neurological disorders. The center is in a unique position to develop agents for life-threatening diseases prominent in the Central Florida region. Five thousand new cancer patients receive treatment each year in the Greater Orlando area. In addition, Florida's position as a primary entry point for immigrants contributes to the risk of tropical and other infectious diseases.

The formation of the institute involves collaborations with institutes including the Walt Disney Memorial Cancer Institute at Florida Hospital, the M. D. Anderson Cancer Institute at Orlando Regional Health Sciences Center, the Harbor Branch Oceanographic Institute, and MBI International, a private non-profit technology research and development corporation. A proposal for an interdisciplinary Ph.D. program in Biomolecular Sciences has been submitted to the State University System.

COLLEGE OF HEALTH AND PUBLIC AFFAIRS PARTNERSHIPS CONTINUED

Sheridan Oaks
Sherie Annfinsen, ARNP
Social Security Administration
South Lake Memorial Hospital
South Seminole Community Hospital
Space Coast Early Intervention Center
Spouse Abuse
State of Florida-
7th Judicial Circuit Court of Florida
Comptroller's Office
Congressman Bacchus's Office
Congressman Weldon's Office
Department of Revenue- Child Support
Enforcement
Department of Juvenile Justice
Juvenile Justice Center
State Representative, District 32
St. Anthony's Hospital
St. Cloud Hospital
St. John's County Board of Commissioners
St. Joseph's Hospital
St. Lucie County Public Schools
St. Luke's Hospital
St. Mary's Hospital
St. Vincent's Hospital
Stewart-Marchman Center

Student Health Services
Sunbelt Health Care & Subacute Center
Suncoast Community Mental Health
Suzanne Paszkowski, CNM
Tampa General Hospital
Tarpon Springs General
Temporary Living Center
The Hearing Center
Therabx-Melbourne Terrace
Tracking Systems Security Investigations
Treasure Coast Rehab Hospital
United Cerebral Palsy
United States Dept. of Agriculture
University Behavioral Center
University Surgical Center
US Customs
US Government Department of Social Security
Administration
US Government National Science Foundation
US Marshals Service
US Representative Dave Weldon
VCC Student Services
Veterans Administration (Orlando Navy Ctr, Navy
Family Service Ctr, Va Outpatient)
Veteran's Affairs Outpatient Clinic
Village on the Green

Vision MRI
Volusia County-
Fire Services
Pretrial Service
Public Schools
W. Orange Chamber of Commerce
Walker Memorial Hospital
Walt Disney FL Hospital Cancer Research
Institute
West Florida Hospital
Winter Haven Memorial Hospital
Winter Park Ambulatory Surgical Center
Winter Park Care Center
Winter Park Chamber of Commerce
Winter Park Memorial Hospital
WMF TV/FM
Women's Residential & Counseling Center
Wuesthoff Memorial Hospital
Young Men's Christian Association—Ormond
Beach
Zoyi Paiva, ARNP

CHIA

..... FACULTY RESEARCH AREAS

Addiction Abuse	Elderly	Performance Measurement
Addiction Disorders	Employee/Labor Relation Law	Personnel Management
Administrative Law	Employment Discrimination	Police Organization Analysis
Adult Critical Care Nursing	Environmental Policy	Police Policy, Practice, Procedures
Alcohol Abuse	Estate Planning	Privatization
Alzheimer's Disease	Ethics	Program Evaluation
American Disabilities Act	Family Therapy	Psycho Therapy
Assessment Centers for Promotions	Federal Health Policy	Public Budgeting
Automation	Gender Issues	Public Policy Planning
Breast Cancer	Health Administration	Public Productivity
Cancer Survivorship	Healthcare Marketing	Quality Management
Capital Punishment	Health Policy	Quality of Life and Cancer
Chemical Dependency	Healthcare Informatics	Quantitative Research Methods
Child Abuse	Healthcare Information Systems	Race/Gender Disparities
Child Welfare	Healthcare Law	Reimbursements
Citizen Surveys	Healthcare Program Planning	Research Design and Evaluation
Community Assessments	HIV/AIDS Social Implications	Risk Management
Community Health	Homelessness	RN to BSN Education
Community Planning and Development	Human Resource Management	Rural Health Nursing Issues
Community Policing	Human Rights Issues	Security
Comparative Law	Insurance Related Disputes	Social Work in Political Arena
Competitive Advantage	International Social Welfare	Solid Waste Management
Computer Networks	International Terrorism	State, Local, Federal, Justice System, and Issues
Constitutional Law	Internet and Web Development	Statistical Analysis
Corrections	Judiciary Sentencing	Statistical Instrumental Development
Crime Causation	Juvenile Justice	Statistics
Crime Prevention	Law Enforcement	Strategic Planning
Criminal Courts and Law	Leadership	Substance Abuse
Criminal Justice Administration	Legal Issues	Surveys
Criminal Justice Policies	Market Analysis	Tax Codes
Criminal Law and Procedures	Media Relations in Criminal Justice	Technology in Nursing
Criminal Sentencing Policy	Mediation of Disputes	Teenage Pregnancy
Curriculum Design	Medical Group Structure	Telecommuting
Database Construction	Relationships	Urban Policy
Discrimination	Mental Health	Violence
Distance Learning	Minority Health and Education	Violence in the Workplace
Diversity Issues	Needs Education	Welfare Reform
Domestic Terrorism	Organizational and Policy Analysis	White Collar Crime
Domestic Violence	Organizational Behavior	Women as Criminal Offenders
Early-release Programs	Organized Crime	Workplace Harassment
Economic Development Analysis	Outcome Evaluations	
EEO/Affirmative Action	Pediatric Nursing	

FACULTY LISTING

.....

CRIMINAL JUSTICE/LEGAL STUDIES

Chair
McCarthy, Bernard J.

Applegate, Brandon
Bast, Carol
Becker, Donald (Brevard)
Bishop, Donna
Bohm, Robert
Cook, Kathy
Eastep, Maryann
Fabianic, David
Flagg, James (Daytona Beach)
Griset, Pamala
Hall, Daniel (Brevard)
Lanier, Mark
Lucken, Karol
Lynch, Ronald
Mahan, Sue (Daytona Beach)
McCarthy, Belinda
Pyle, Ransford
Ravitch, Frank
Remis, Robert
Sanborn, Joseph
Slaughter, David
Surette, Raymond

COMMUNICATIVE DISORDERS

Chair
Nye, Chad

Brutten, Gene
Hedrick, Dona
Ingram, David
Mullin, Thomas
Ratusnik, David
Rivers, Kenyatta
Rosa-Lugo, Linda
Ryalls, John
Utt, Harold (Brevard)
Vanryckeghem, M.

HEALTH PROFESSIONS AND PHYSICAL THERAPY

Chair
Frazer, Gregory H.

Acierno, Louis J.
Barr, Carol
Bergner, John
Bertetta, Gerald
Chase-Beasley, Lisa
Diesen, Michele
Douglass, Sharon
Edwards, Thomas
Enchelmayer, Karen
Falen, Thomas
Freeman, Ruth
Hamby, Eileen
Hudson, Vincent
Lieberman, Aaron
Ludy, Jeff
Lytle, J. Stephen
Mendenhall, Thomas
Rotarius, Timothy
Valentine, John A.
Welker, Patricia
Worrell, Tim

MOLECULAR BIOLOGY & MICROBIOLOGY

Chair
Gennaro, Robert

Berringer, O.M.
Chai, Karl
Chakrabarti, Debopam
Chakrabarti, Ratna
Charba, Julius
Fernandez-Valle, Cristina
Hitchcock, Dorilyn
Naser, Saleh
Sweeney, Michael
Washington, David
White, Roseann
Wodzinski, Rudy

NURSING

Director
Stullenbarger, Elizabeth

Bert Fish Endowed Chair
Bushy, Angeline
Bear, Mary
Browne-Krimsley, Valerie
Brunell, Mary Lou
Covelli, Maureen
Crigger, Nancy
Dow, Karen
Giovinco, Gina
Hennig, Linda
Holcomb, Lygia
Kapke, Karen
Kiehl, Ermalynn
Kijek, Jean C.
Ramey, Mary Elizabeth
Smith, Frances
Sole, Mary Lou
Wink, Diane

PUBLIC ADMINISTRATION

Chair
Lawther, Wendell

Aristigueta, Maria
Berman, Evan
Colby, Peter
Gianakis, Jerry
Jurie, Jay
Liou, K. Tom
Rios, Jo Marie
Rogers, Melvin
Shapek, Raymond A.

SOCIAL WORK

Director
Colby, Ira

Abel, Eileen
Davis, Laurel
Green, Cheryl
Jacinto, George
Kazmerski, Kenneth
Leon, Ana
Pomeroy, Elizabeth
Poole, Dennis
Sauer, Margaret
Suh, Edward
Van Hook, Mary



Back row - left to right, Robert Gennaro, Bernard McCarthy, Gregory Frazer, Elizabeth Stullenbarger. Seated, front row - left to right, Ira Colby, Chad Nye, Wendell Lawther

CHP

COMMUNICATIVE DISORDERS

BOOK CHAPTERS:

Ryalls, J., & Lecours, A. R. From bumps on the head to cortical convolutions: Broca's first two cases. In *Classical Cases in Neuropsychology*.

ARTICLES:

Ryalls, J., LeDorze, G., Boulanger, H., & Laroche, B. Speech therapy for lowering vocal fundamental frequency in two adolescents with hearing impairment. *Volta Review*.

Ryalls, J., Zipprer, A., & Baldauff, P. A preliminary investigation of the effects of gender and race on voice onset time. *Journal of Speech & Hearing Research*.

Thornburgh, D., & Ryalls, J. Voice onset time in Spanish-English bilinguals: Early versus late learners of English. *Journal of Communication Disorders*.

Vanryckeghem, M. De "communication attitude test" (C.A.T.) Kort Instrumenteel. *Tijdschrift voor Gedragstherapie*.

Vanryckeghem, M. De communication attitude test en het verband met de ernst van het stotteren: Bepaald via percentage nietvloeiendheid en een beoordelingschaal. *Signaal*.

Vanryckeghem, M., & Brutten, G. The relationship between communication attitude and fluency failure of stuttering and non-stuttering children. *Journal of Fluency Disorders*.

Vanryckeghem, M., & Brutten, G. The speech associated attitudes of stuttering and non-stuttering children and the different effect of age. *American Journal of Speech Language Pathology*.

Nye, C., Lorch, M. P., & Whurr, R. The utility of meta analysis in the determination of efficacy of treatment in aphasia. *Brain and Language*.

Ryalls, J., & Thornburgh, D. New findings in second language learning. *Advance: The Nation's Speech-language and Audiology Weekly*.

Whurr, R., Lorch, M. P., & Nye, C. The treatment of spasmodic dysphonia with botulinum toxin injection. *Neurology*.

NURSING:

BOOKS:

Dow, K. H. *Contemporary Issues in Breast Cancer*. Jones and Bartlett Publishers.

Dow, K. H., Bucholtz, J., Iwamoto, R., Fieler, V., & Hiderly, L. (Eds). *Nursing Care in Radiation Oncology*, 2nd ed., W. B. Saunders.

Hartshorn, J. C., Sole, M. L., & Lamborn, J. L. *Introduction to Critical Care Nursing*, 2nd ed., W. B. Saunders.

BOOK CHAPTERS:

Bushy, A., & Bushy, J. The Vietnam war: Ongoing grief response. In D. Lund (Ed.) *Grief Responses in Men*.

Martin, D., & Crigger, N. Ethical and legal issues in critical care. In *Introduction to Critical Care Nursing* (2nd ed).

Hiderly, L., & Dow, K. H. Cancer treatment modalities: Radiation therapy. In *Cancer Nursing: Principles & Practice*, 2nd ed.

Dow, K. H. Chapter 24: Breast cancer. In *A Cancer Source Book for Nurses*, 7th Ed.

Sole, M. L., & Hartshorn, J. C. Introduction to critical care nursing. In *Introduction to Critical Care Nursing*.

Sole, M., & Byers, J.F. Ventilatory assistance. In *Introduction to Critical Care Nursing*.

McKinley, M.G., Robinson, C.F., & Sole, M.L. Shock. In *Introduction to Critical Care Nursing*.

Stanley, P. C., & Crigger, N. J. Ethics and the practice of therapeutic touch.

MONOGRAPHS/ABSTRACTS

Bear, M., Sauer, M., & Julian, M. Osceola County Council on Aging. Community Based Services: Process and Outcome Evaluation.

Bear, M., & Williams, C. Teenage pregnancy prevention programs: Analysis of Orange County programs and a summary of current research. Orange County Healthy Start.

Bear, M., Brunell, M. L., & Covelli, M. Osceola County Council on Aging Senior Health Clinic: Process and outcome evaluation. Osceola County Council on Aging.

Crigger, N. J., & Galusha, C. Perceptions of Gender Discrimination in Nursing Students. International Collaboration on Nursing: Second Nursing Academic International Congress.

Crigger, N. J. Movement into Caring: How Student Nurses Develop Emotionally Responsive Relationships. Southern Nursing Research Society.

Dow, K. H., Ferrell, B. R., Haberman, M., & Eaton, L. The challenges and strategies in reporting qualitative findings of

quality of life data. National Conference on Cancer Nursing Research. American Cancer Society.

Haberman, M., Ferrell, B.R., Dow, K.H., & Eaton, L.

Qualitative analysis of quality of life data: The challenges of analyzing large data sets of written text. National Conference on Cancer Nursing Research.

Mock, V., Dow, K. H., Grimm, P., & Meares, C. Challenges of intervention research in oncology nursing: Fatigue as a model. National Conference on Cancer Nursing Research.

Giovinco, G. Who Cares?: Institutional barriers to health care for lesbian, gay and bisexual persons. *NLN Update*.

Giovinco, G. The ethics of health care. Delmar Publishers.

Giovinco, G. The art & vocation of caring for people in pain. *The Forum* Mid-America Logotherapy Institute.

Giovinco, G. Christian sex, gender, and marriage. *Personal Energy Manager Rainbow Planner*. Genesis Personal Development Center.

Giovinco, G. AIDS and people with severe mental illness: A handbook for mental health professionals. *American Orthopsychiatric Inc. Readings: A Journal of Reviews and Commentary in Mental Health*.

Giovinco, G. Nursing ethics and law: NLN-N&HC: Perspectives on Community.

Kiehl, E. Short stay maternity: Care for the future or thing of the past? Association of Women's Health, Obstetric, and Neonatal Nursing's District IV Conference.

Kiehl, E., & Warren, C. Using integrated research to slay a sacred cow. Sixth Annual Sigma Theta Tau Research Day.

ARTICLES:

Bear, M., Dwyer J., Dougherty, M., & Beneveneste, D. An illusive quest: Involving care givers of older women in home-base management of urinary incontinence. *Journal of Wound Ostomy and Continence Nursing*.

Bear, M., & Bowers, C. Using a nursing framework to measure client satisfaction at a nurse-managed clinic. *Public Health Nursing*.

Publicover, C., & Bear, M. The effect of bladder training upon urinary incontinence in community dwelling older women. *Journal of Wound, Ostomy, & Continence Nursing*.

Bear, M., Brunell, M. L., & Covelli, M. Using a nursing framework to establish a nurse-managed senior health clinic. *Journal of Community Health Nursing*.

Browne-Krimsley, V. A., & Magennis J. Guidelines for designing continuous improvement programs: Lessons from business. *Journal of Nursing Science*.

Browne-Krimsley, V. A. Project Liftoff. Models that work: The 1996 compendium of innovative primary health care programs for underserved and vulnerable populations. *Bureau of Primary Health Care*.

Bushy, A. Case management: Considerations for coordinating quality services in rural communities. *Journal of Nursing Quality Care*.

Bushy, A. Cultural diversity in rural America: An emerging challenge for caregivers. *Rural Health F.Y.I.; News Magazine of the NRHA*.

Bushy, A. Empowering initiatives to improve a community's health status. *Journal of Nursing Quality Care*.

Bosch, D., & Bushy, A. Providing home care to rural clients. *Caring*.

Bushy, A. Case management with rural clients. *Counseling and Guidance*.

Bushy, A. Mental health and substance abuse: Challenges in providing services to rural clients. In: *Bringing Excellence to Substance Abuse in Rural and Frontier America. 1996 Awards for Excellence Papers*. Competitive Peer Reviewed Manuscripts - Third Place Award. Rockville, MD: Gov't Printing Office #USDHHS-PHS-SAMHSA-270-93-0004.

Gibbons, B., Penney, N., & Bushy, A. Partners in distance learning: Project outreach. *Journal of Nursing Administration*.

Crigger, N. J. Testing an uncertainty model for women with Multiple Sclerosis. *Advances in Nursing Science*.

Crigger, N.J. Clues to determining alcohol abuse. *American Journal of Nursing*.

Crigger, N.J. Why caring doesn't work: A review of eight arguments against an ethic of care. *Journal of Professional Nursing*.

Crigger, N. J., & Forbes, W. Assessing neurological function in older patients. *American Journal of Nursing*.

Dow, K. H., Ferrell, B., Leigh, S., Ly, J., & Gulasekaram, P. An evaluation of the quality of life among long-term survivors of breast cancer. *Breast Cancer Research and Treatment*.

King, C., Haberman, M., Berry, D., Bush, N., Butler, N., Dow, K., Ferrell, B., Grant, M., Gue, D., Hinds, P., Kreuer, J., Padilla, G., & Underwood, S. Quality of life and the cancer experience: The state of the knowledge. *Oncology Nursing Forum*.

Dow, K. H., & Ferrell, B. Body image issues. Quality of life: A nursing challenge monograph.

Ersek, M., Ferrell, B., & Dow, K.H. An exploration of the quality of life of women with ovarian cancer. *Western Journal of Nursing Research*.

Dow, K. H., & Anello, C. Quality of life in patients with thyroid cancer. *Thyroid*.

Dow, K.H., Ferrell, B., & Anello, C. Balancing demands of cancer surveillance. *Cancer Practice*.

Mock, V., Dow, K. H., Meares, C. J., Grimm, P. M., Dienemann, J. A., Haisfield-Wolfe, M., Quitasol, W., Mitchell, S., Chakravarthy, A., & Gage, I. Effects of exercise on fatigue, physical functioning and emotional distress during radiation therapy for breast cancer. *Oncology Nursing Forum*.

Ferrell, B. R., & Dow, K. H. An evaluation of quality of life in long term cancer survivors. *Oncology*.

Ersek, M., Ferrell, B., & Dow, K. H. An exploration of the quality of life of women with ovarian cancer. *Western Journal of Nursing Research*.

Broussard, A., & Giovinco, G. Commentary on euphemisms in nursing. *Image: Journal of Nursing Scholarship*.

Kiehl, E., Anderson, G., Wilson, M., & Fosson, L. Social status, mother-infant time together, and breast feeding duration. *Journal of Human Lactation*.

Kiehl, E., Wallace, R., & Warren, C. The effect of home-laundered vs. hospital-laundered scrub clothing on perinatal infection rates. *American Journal of Maternal Child Nursing*.

Sole, M. L. Offering choices in a critical care elective. *Critical Care Nurse*.

Sole, M. L. A change from the annotated bibliography: A reading analysis project. *Nurse Educator*.

Sole, M. L. Abolishing the doctoral candidacy credential. *Nurse Educator*.

Kinney, M. R., Burfitt, S., & Stullenbarger, E. Quality of life in cardiac patient research: A meta-analysis. *Nursing Research*.

Kiehl, E. Interviewing techniques for selecting family-centered care nurses. *Mother Baby Journal*.

Kiehl, E., & Hallaron, J. How broad are your shoulders: Maintaining a healing environment during times of turmoil. *Mother Baby Journal*.

MOLECULAR AND MICROBIOLOGY

ARTICLES:

Chai, K.X., Chen, V.C., Ni, A., Lindpainter, K., Rubattu, S., Chao, J., & Chao, L. Molecular cloning and expression of rat kallistatin gene. *Biochemica et Biophysica Acta*.

Truong, R. M., Francis, S. E., Chakrabarti, D., & Goldberg, D. E. *Molecular and Biochemical Parasitology*.

Demarco, V., Mccain, M., Strauss, D., & Chakrabarti, R. Characterization of glutamine synthetase transcript, protein, and enzyme activity in human placenta. *Placenta*.

El-zaatari, F. A., Naser, S. A., Markesich, D. C., Kalter, D. C., Engstrand, L., & Graham, D. Y. Identification of mycobacterium avium complex in sarcoidosis. *Journal of Clinical Microbiology*.

Fernandez-Valle, C., Gorman, D., Gomez, A.M., & Bunge, M.B. Actin plays a role in both changes in cell shape and gene expression associated with Schwann cell myelination. *Journal of Neuroscience*.

Salamonc, P. R., & Wodzinski, R. J. Production, purification and characterization of a 50Kda metalloprotease form *Serratia marcescens*. *Applied Microbiology and Biotechnology*.

SOCIAL WORK

BOOKS:

Poole, D. et al. *Social Policy: Reform, Research, and Practice*. NASW Press.

BOOK CHAPTERS:

Colby, I. O. O. Howard. *Encyclopedia of Social Work*.

Colby, I., & Hoffer, R. Private social welfare expenditures. In *Encyclopedia of Social Work*.

Poole, D. NAFTA, American health and Mexican health. In *Social Policy: Reform, Research, and Practice*.

Poole, D. Keeping managed care in balance. In *Social Policy: Reform, Research, and Practice*.

Poole, D. The bad, the ugly, and maybe not too awful. In *Social Policy: Reform, Research, and Practice*.

Poole, D. Introduction. In *Social Policy: Reform, Research, and Practice*.

Van Hook, M. Christian social work. In *Encyclopedia of Social Work*.

MONOGRAPHS:

Poole, D., & Nelson, J. Assessment of community strengths and needs in human services in central Florida. Orlando, FL: Heart of United Way.

Suh, E. Evaluation of the tae kwon do mainstream project. Orlando, FL: Center for Drug Free Living.

ARTICLES:

Colby, I. Adjunct faculty in social work education. *Journal of Teaching in Social Work*.

Colby, I. Engaging the community in the evaluation process. *Journal of Community Practice*.

Green, C., & Wooten, W. Construct validity of the work self-efficacy scale. *Psychological Reports*.

Pomeroy, E. et al. A psychoeducational model for caregivers of persons with AIDS. *Journal of Family Social Work*.

FACULTY PUBLICATIONS

Pomeroy, E. The effectiveness of a psychoeducational group with family members of persons living with HIV/AIDS: Rural versus urban differences. *Rural Community Mental Health*.

Pomeroy, E., & Walker, R. The grief of caregivers: How pervasive is it? *Gerontological Social Work*.

Pomeroy, E., & Walker, R. Depression or grief? The experience of caregivers of persons with dementia. *Health & Social Work*.

Poole, D. Achieving national health goals in prevention through community organization: The bottom-up approach. *Journal of Community Practice*.

Poole, D., & Van Hook, M. Retooling for community partnerships in primary care and prevention. *Health & Social Work*.

Poole, D. Welfare reform: The good, the ugly, and maybe not too awful. *Health & Social Work*.

Poole, D. Keeping managed care in balance. *Health & Social Work*.

Van Hook, M. et al. Assessment tools for general health care settings: PRIME-ED, OARS, and SFE-36. *Health & Social Work*.

Van Hook, M. Violence and depression: Responding to women within primary care. *The International Journal of Psychiatry in Medicine*.

Leon, A. A university-community collaborative project: Mental health services for juvenile offenders. *Metropolitan Universities: An International Forum*.

HEALTH PROFESSIONS AND PHYSICAL THERAPY

BOOK CHAPTERS:

Hamby, E. F. Planning and development. In *Industrial Rehabilitation Services*.

Hamby, E. F. Quality management. In *Industrial Rehabilitation Services*.

Hamby, E. F. Financial management. In *Industrial Rehabilitation Services*.

Hamby, E. F. Service programs. In *Industrial Rehabilitation Services*.

MONOGRAPHS:

Fiedler, A. M., & Hamby, E. F. Perceptions of different types of sexual harassment in health care: An empirical study of occupational therapists, physical therapists, and medical technologists. *Contemporary Issues of Employment Practices & Principles*. Sponsored by the Association on Employment Practices and Principles and the American Management Foundation.

Morse, L., & Lytle, J. S. Restructuring a student centered education: A focus on change. Central Florida Consortium of Higher Education.

Morse, L., Dubois, J., Lytle, J. S., Moskal, P., & Patterson, B. Central Florida consortium of higher education distance learning demonstration project board of regents final report. Central Florida Consortium of Higher Education.

ARTICLES:

Chase-Beasley, L., Rutherford, J., & Corbin, C. B. Factors affecting the self-measurement of body fatness in females. *Kentucky Journal of the Alliance of Health, Physical Education, Recreation, and Dance*.

Fottler, M. D., Blair, J. D., Rotarius, T. M., & Youngblood, M. R. Strategic choices for medical group practices: Managing key strategic relationships in the integrated future. *Medical Group Management Journal*.

Liberman, A., Boen, B., & Capell, W. A supervised program for dialysis patients - effects of physical empowerment. *Journal of Renal Nutrition*.

Liberman, A., & Goode, B. EPO utilization experience & billings - one method of auditing responsibility. *Dialysis & Transplantation*.

Liberman, A., & Liberman, J. S. Responsibilities of healthcare supervisors & employees - seven recommended tenets. *The Health Care Supervisor*.

Liberman, A., Meixner, S., Tapp, G., & Dalton, C. Bridging the insurance reimbursement gap for dialysis patients: One recommended method. *Dialysis & Transplantation*.

Liberman, A., Rotarius, T.M., & Kendall, L. Alternative dispute resolution: A conflict management tool in health care. *The Health Care Supervisor*.

Morse, L., Lytle, J. S., & Lytle, B. V. Learner support systems: A consortium approach. Proceedings of the 18th Annual International Council for Distance Education World Conference.

Rotarius, T. M. Structural integration groups in the health care industry. *Academy of Management Proceedings*.

Savage, G. T., Taylor, R. L., Rotarius, T. M., & Buessler, J. A Governance of integrated delivery systems/networked: A stockholder approach. *Health Care Management Review*.

PUBLIC ADMINISTRATION

BOOK CHAPTERS:

Berman, E.M. Casual modeling and path analysis in public administration research. In *Handbook of Data Analysis and Quantitative Methods in Public Administration*.

Berman, E.M. The CRADA experiment. In *Technology Transfer and Public Policy*.

Gianakis, G., & McCue, C. Local government capacity building through performance measurement. *The Handbook of Local Government Management*.

Gianakis, G.A., & Frank, H.A. Assessing public administration practice: The case of revenue forecasting. In *Research in Public Administration*.

ARTICLES:

Aristigueta, M. Teaching of intrapersonal skills. *Teaching Public Administration*.

Aristigueta, M., & Fernandez, J. Homegrown economic development: Implementing the hispanic business initiative fund in Central Florida. *Public Administration Quarterly*.

Berman, E. Dealing with cynical citizens. *Public Administration Review*.

Berman, E., & West, J. Managing ethics to improve performance and build trust. *Public Integrity Annual*.

Berman, E., & West, J. Managerial responses to an aging municipal workforce: A national survey. *Review of Public Personnel Administration*.

Berman, E., & West, J. Public-private leadership and the role of non-profit organizations: The case of social services. *Policy Studies Review*.

Berman, E., & Werther, W. Broad-based consensus building. *International Journal of Public Sector Management*.

Berman, E., & Levine, A. Broad-based consensus building. *Forum for Applied Research and Public Policy*.

Berman, E., West, J., & Milakovich, M. Implementing TQM in state health service agencies. *Journal of Health and Human Services Administration*.

Berman, E.M., & West, J.P. Municipal responses to homelessness: A national survey of preparedness. *Journal of Urban Affairs*.

Berman, E.M., & West, J.P. Administrative creativity in local government. *Public Productivity and Management Review*.

Gianakis, G., & Stone, J. Measuring the performance of municipal organizations: An implementation tale of two cities. *Administration Theory and Praxis*

Gianakis, G.A., & McCue, C.P. Administrative innovation among Ohio finance officers. *American Review of Public Administration*.

Gianakis, G.A., & McCue, C.P. Job satisfaction among Ohio finance officers. *Public Productivity and Management Review*.

Gianakis, G.A. The promise of public sector performance measurement: Prometheus fire or chimera? *Public Administration Quarterly*.

Liou, K.T., & Savage, E. Citizen perception of community policing impact. *Public Administration Quarterly*.

Liou, K.T. Administrative development issues in China's economic reform. *International Journal of Public Administration*.

Liou, K.T. The role of government in economic development. *International Journal of Public Administration*.

Liou, K.T. Issues and lessons of Chinese civil service reforms. *Public Personnel Management*.

Liou, K.T. Retrospective and perspective on China's administrative reform. *International Journal of Public Administration*.

Liou, K.T. Employee turnover intention and professional orientation. *Public Administration Quarterly*.

Liou, K.T. Employee job stress in the AIDS service organization. *Journal of Health and Human Services Administration*.

CRIMINAL JUSTICE AND LEGAL STUDIES

BOOKS:

Applegate, B., & Cullen, F. *Offender Rehabilitation: Effective Correctional Intervention*. Dartmouth.

Bohm, R. *A Primer on Crime and Delinquency Theory*. Wadsworth.

Hall, D. *Constitutional Law: Cases and Comments*. West Publishing.

Hall, D. *Criminal Procedure and the Constitution*. West Publishing.

Hall, D. *Survey of Criminal Law*. West Publishing.

Mahan, S., Crack Cocaine, Crime and Women. Sage.

McCarthy, B., & McCarthy, B.J. *Community Based Corrections*. Wadsworth Publishing.

Surette, R. *Media, Crime, and Criminal Justice: Images and Realities*. Wadsworth Publishing.

BOOK CHAPTERS:

Bast, C. Appendix on researching constitutional law. In *Constitutional Law: Governmental Powers and Limitations*.

Bohm, R. The pros and cons of capital punishment. In

Corrections: An Issues Approach.

Cook, K. Chapter 3. *Florida Juvenile Law and Practice*.

Sanborn, J. Remnants of parens patriae in the adjudicatory hearing: Is a fair trial possible in juvenile courts? In *Juvenile Justice Administration*.

Surette, R. News from nowhere, policy to follow; media and the social construction of three strikes and you're out. In *Three Strikes and You're Out*.

Surette, R. The history of crime and justice info-tainment. In *Reality Programming: The New Crime News*.

Surette, R. Media and crime. In *Crime and the Justice System in America*.

MONOGRAPHS:

Applegate, B. Specifying public support for rehabilitation: A factorial survey approach. National Institute of Justice.

Bishop, D., Mayer, E., & Brown, S. Lay representation of children in the courts: Florida's guardian ad litem program. University of Florida: Center for Governmental Responsibility.

Lanza-Kaduce, L., Bishop, D., & Winner, L. Juvenile case processing in Florida: A comparison of cross-jurisdictional variations in timing sequences and outcomes. Juvenile Justice Advisory Board.

Surette, R., Lano, J., & Salas, L. Crime prevention in hispanic Florida communities. Center for the Administration of Justice.

ARTICLES:

Applegate, B., Sundt, J.L., Cullen, F.T., & Turner, M.G. The tenacity of the rehabilitative ideal revisited: Have attitudes toward offender treatment changed? *Criminal Justice and Behavior*.

Applegate, B., Langworthy, R.H., & Latessa, E.J. Factors associated with chronic drunk driver treatment success: The turning point program. *Journal of Offender Rehabilitation*.

Applegate, B., Turner, M.G., Cullen, F.T., & Sundt, J.L. Public tolerance for community based sanctions. *Prison Journal*.

Applegate, B., Turner, M.G., Cullen, F.T., & Sundt, J.L. Assessing public support for three-strikes-and-you're-out laws: Global versus specific attitudes. *Crime and Delinquency*.

Applegate, B., Moon, M., & Latessa, E. Diverting youth from incarceration: A summary of the pilot phase of RECLAIM Ohio. *Journal for Juvenile Justice and Detention Services*.

Bast, C. Shepardizing: An indispensable legal research tool. *Research Strategies: A Journal of Library Concepts and Instruction*.

Bast, C. Cordless telephones: If you can't say something nice, you might want to send a letter. *Criminal Law Bulletin*.

Bast, C. Rainmaking, publishing, and the legal educator. *Journal of Paralegal Education and Practice*.

Bast, C. Driving while black: You may stop motorists on a subterfuge; we can't care and we won't ask. *Criminal Law Bulletin*.

Bishop, D., Frazier, C.E., Lanza-Kaduce, L., & Winner, L. The transfer of juveniles to criminal court: Does it make a difference? *Crime and Delinquency*.

Lanza-Kaduce, L., Bishop, D., Frazier, C., & Winner, L. Changes in juvenile waiver and transfer provisions: Projecting the impact in Florida. *Law and Policy*.

Lanza-Kaduce, L., Bishop, D., & Winner, L. Risk/benefit calculations, moral evaluations, and alcohol use: Exploring the alcohol-crime connection. *Crime and Delinquency*.

Fabianic, D. Television dramas and homicide causation. *Journal of Criminal Justice*.

Hall, D. Sustained performance review: A threat to academic freedom. *Educational Forum*.

Griset, P. Evolution of the determinate ideal of sentencing: An Illinois case study. *Law and Policy*.

Lanier, M., & Gates, S. An empirical assessment of the AIDS risk reduction model (AARM) employing ordered probit analyses. *Journal of Criminal Justice*.

Lucken, K. Dynamics of penal reform. *Crime, Law, and Social Change*.

Lucken, K. Privatizing discretion: Rehabilitating treatment in community corrections. *Crime and Delinquency*.

Lucken, K. Penal trends: Modern or postmodern? *British Journal of Criminology*.

Mahan, S., & Lawrence, R. Murder and mayhem in corrections: The role of the media in prison riots. *The Prison Journal*.

Bast, C. Eavesdropping in Florida: Beware a time-honored but dangerous pastime. *Nova Law Review*.

Bishop, D., Frazier, C.E., & Lanza-Kaduce, L. Get tough juvenile reforms: Does adultification make matters worse? *University of Pennsylvania Law Review*.

Ravitch, F.S. Creating chaos in the name of consistency: Affirmative action and the odd legacy of Adarand Constructors, Inc., v. Pena. *101 Dickinson Law*.

Ravitch, F.S. Contextualizing gender harassment: Providing an analytical framework for an emerging concept of discrimination law. *Detroit College of Law at Michigan State Law Review*.