



Mythopoeic Society

mythLORE

A Journal of J.R.R. Tolkien, C.S. Lewis,
Charles Williams, and Mythopoeic Literature

Volume 2
Number 4

Article 6

Winter 1-15-1972

The Counsel of Elrond

Glen GoodKnight

Follow this and additional works at: <https://dc.swosu.edu/mythlore>



Part of the [Children's and Young Adult Literature Commons](#)

Recommended Citation

GoodKnight, Glen (1972) "The Counsel of Elrond," *Mythlore: A Journal of J.R.R. Tolkien, C.S. Lewis, Charles Williams, and Mythopoeic Literature*: Vol. 2 : No. 4 , Article 6.

Available at: <https://dc.swosu.edu/mythlore/vol2/iss4/6>

This Column is brought to you for free and open access by the Mythopoeic Society at SWOSU Digital Commons. It has been accepted for inclusion in *Mythlore: A Journal of J.R.R. Tolkien, C.S. Lewis, Charles Williams, and Mythopoeic Literature* by an authorized editor of SWOSU Digital Commons. An ADA compliant document is available upon request. For more information, please contact phillip.fitzsimmons@swosu.edu.

To join the Mythopoeic Society go to:
<http://www.mythsoc.org/join.htm>

SWOSUTM

Mythcon 51: A VIRTUAL “HALFLING” MYTHCON

July 31 - August 1, 2021 (Saturday and Sunday)

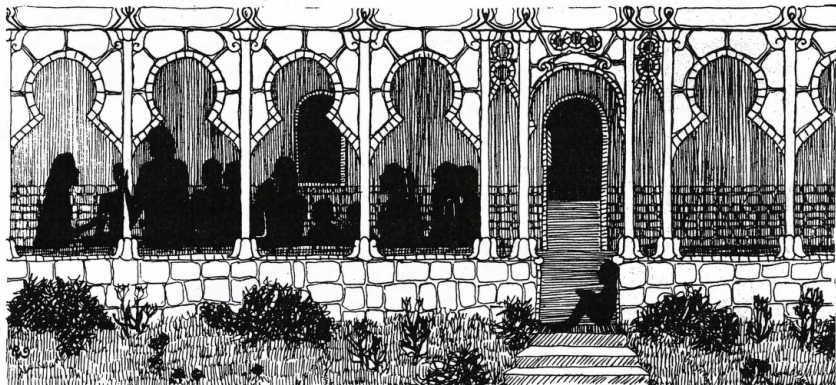
<http://www.mythsoc.org/mythcon/mythcon-51.htm>



Mythcon 52: The Mythic, the Fantastic, and the Alien

Albuquerque, New Mexico; July 29 - August 1, 2022

<http://www.mythsoc.org/mythcon/mythcon-52.htm>



The Counsel of Elrond

by Glen GoodKnight

If you have read the item on Society Publications on page 31, you will notice two new periodicals: Mythril and Parma Eldalamberon. Their appearance will signal a slight editorial policy shift in Mythlore. As a general rule (with some infrequent exceptions) all poetry and fiction will appear in Mythril, and all linguistic material will appear in Parma. Why? One, because that is the purpose of the two new periodicals respectively; two, because we really didn't publish that much of poetry, fiction, and linguistic material in Mythlore before. This way is neater. Mythlore has and will be primarily focused on articles and reviews.

I have asked, "Is this policy of specialization advisable at this time?" Yes and No. I would like to see all of this combined into one publication, as it probably should, but it is the financial aspect that prevents this. We would need a much larger circulation and list of subscribers to be able to afford putting all three publications in one.

For now, I would ask you to do two things: support the two new publications by sending for them, and continue to support Mythlore by writing letters of comment, articles, and sending in artwork.

We are always looking for new articles to print. It is interesting to me that we have used a very large percentage of the material submitted, and that which we have used is of very good quality. We particularly desire articles related to one of the three authors, but would like also to see more articles on the fantasy genre generally, and articles related to the basic theme of MYTH: what is it? what is its function? what is its value?

In the last issue of Mythlore I mentioned the relationship of the subscription to Mythlore to membership in the Mythopoeic Society. There is no direct relationship, but I did urge all readers of Mythlore to become either active or associate members of the Society, and receive the monthly bulletin of the Society, Mythprint. For \$2 a year you can get 12 issues of Mythprint, and if you still haven't done so, there are now additional reasons why you should. As of the January 1972 issue, Mythprint has a new format, consisting of 16 pages! The pages are seven by eight and a half inches in size and the size of the type is the same as on this page. Mythprint, with its artwork, branch reports, mini-reviews,

letter column, humorous material, branch discussion reports, editorial, and Society news, could be considered a mini-Mythlore. There is one thing that I do take modest pride in about Mythprint (before January 1970 it was just a one page monthly meeting announcement sheet with topic suggestion): it has come out monthly since the Society began. It has not been easy to stick to a strict schedule, in spite of all other factors and distractions over a four-year period of time. More and more other people have been a necessary and indispensable help in getting it out. I honestly wish that Mythlore could have maintained its quarterly schedule, as it did for the first four issues. As it is now, we will put out an issue about every four to six months.

Now then, what been happening since the last issue of Mythlore? Much. The Society has grown by four more branches:

The Bowling Green Branch (The Midgewater Marshes) in Ohio — June 1971

The Sacramento Branch (Avalon) — August 1971

The Houston Branch (Gwynedd) — October 1971

The Chicago Branch (Orthanc) — November 1971

We also have a new special interest group: The Neo-Pre-Raphaelite Guild. It is interested in what its name represents, plus art nouveau, the visual arts, and all manner of crafts. It plans to sell items at Mythcon III, and possibly produce a series of LOTR art folios.

As you know from reading Bernie Zuber's "Across the Brandywine," Bonnie and I were married at Mythcon II. That's one way to keep talent in the Society, as one person told me. We are expecting to be parents, and to bring the baby to the next Mythcon. If it is a girl, its name will be Arwen Joy GoodKnight, and if a boy, Glen Howard GoodKnight III. If it is twin boys, (not likely) we will name them Elladan and Elrohir. It is an exciting time of waiting.

I feel I should apologise for the quality of printing on some of the pages in this issue. Half of the issue was printed while Bonnie and I were on Christmas vacation. The technical ability of the printer was poor, and we did the rest somewhere better. It is heartbreaking to work hard on something and have it marred by other factors. 12/30/71
ML8