



---

2-21-2007

## Volume 98 Issue 18

Southwestern Oklahoma State University

Follow this and additional works at: [https://dc.swosu.edu/the\\_southwestern](https://dc.swosu.edu/the_southwestern)

---

### Recommended Citation

Southwestern Oklahoma State University, "Volume 98 Issue 18" (2007). *The Southwestern*. 288.  
[https://dc.swosu.edu/the\\_southwestern/288](https://dc.swosu.edu/the_southwestern/288)

This Book is brought to you for free and open access by the Newspapers at SWOSU Digital Commons. It has been accepted for inclusion in The Southwestern by an authorized administrator of SWOSU Digital Commons. An ADA compliant document is available upon request. For more information, please contact [phillip.fitzsimmons@swosu.edu](mailto:phillip.fitzsimmons@swosu.edu).



## Students remember Hensley with prayer walks

By Michael McChesney  
Staff Reporter

The Baptist Collegiate Ministry and Derek Wheeler have stepped up to continue prayer walking on campus to honor James Hensley.

Hensley died January 28, 2007, in a truck accident.

Hensley started the prayer walk last fall as a Baptist Collegiate Ministry outreach. The

idea was to walk down every sidewalk on campus and pray for the students. Prayers included topics such as health, personal problems, grades and campus revival.

"The idea is to pray on site with insight," said Ron Henderson, BCM director.

The purpose of the walk was to create a revival started on campus. Hensley had a vision in which a great awakening would start from a few students being faithful.

He implemented a plan to have students

walk around campus seeking God, asking God to do work on Southwestern's campus.

Hensley decided that the prayer walk should be open to all people and should not be tied to a single ministry. He advertised it at Chi Alpha and Campus Crusade for Christ.

The walk continues to be an independent outreach open to all people.

Ten to fifteen people showed up weekly

to pray with Hensley in December and January. He wanted to see 30 people show up to pray for the campus.

While Hensley was not able to see that dream come true, 48 people showed up to pray for the campus on Jan. 31, following a memorial service for him.

The prayer walk continues to be a weekly activity. Interested students can meet at 7:45 p.m. on Wednesdays at the Southwestern clock tower.



Students have enjoyed Relay for Life events in previous years. (Photo provided by Zac Dumas)

### Tough enough to wear **PINK?**



**"Tough Enough"**  
Pink T-shirts  
Sizes available:  
Youth M - Adult 3X  
\$10

Shirts can be ordered through any CAB member, the Dean of Students Office, Rouben Tourian or Chad Ramirez. Shirts can be purchased at remaining home basketball games.

The Southwestern rodeo team, Collegiate Activities Board and the Athletic Department are selling pink t-shirts that will help raise funds and awareness for cancer research. The groups plan to donate proceeds at the annual Relay for Life event April 27-28 at the Wellness Center. Among the participants are (from left): Chad Ramirez, rodeo coach; Relay for Life Public Relations Director Donovan Fuller; CAB "Tough Enough" Project Chair Jacee Nuttle; CAB Relay for Life Captain Heather Leach; "Tough Enough" Financial Officer Wendy Billington; American Cancer Society District Director Cheryl Smith; and Assistant Athletic Director Rouben Tourian.

## Relay for Life raises money for cancer research

By Cashlie Hines  
Staff Reporter

"You have cancer."

It is a small three-word phrase that can devastate lives, send heartache and pain to many families and ruin hope for some.

However, the American Cancer Society's signature fundraiser, Relay for Life, is trying to turn this phrase into something that is a thing of the past.

This all-night cancer walk raises money for cancer research in Oklahoma.

"Last year Oklahoma's Relay for Life raised over \$4 million and of that, \$3 million stayed in Oklahoma," said Community Manager Cheryl Smith. "Of those profits, only 18 percent went to fundraising and management."

The Custer County Relay for Life will start

at 7 p.m. April 27 in the Wellness Center.

The activities will begin with the survivor lap and will be followed by Mr. Relay, karaoke, the Men at Midnight bachelor auction, the basket auction and the luminary lighting.

Everyone is invited to form a team for this cause. Teams can consist of organizations, families or businesses.

"Students are a vital part of Relay for Life," Smith said. "Out of 31 teams last year, 16 were teams from Southwestern. We encourage students to get involved."

Cancer survivors are also a major part of Relay for Life, and any

cancer survivors are welcome to attend.

BancFirst will sponsor a concession stand from 7 to 9 pm with barbecue sandwiches and chips. After that, a variety of food will be provided, including hot dogs and pizza.

Students wanting to participate in Relay for Life can call Kristy Linscott at 772-5541 to purchase luminaries, sponsor a team or be a corporate sponsor. Students may also visit [www.acevents.org/](http://www.acevents.org/) weatherfordok to find out more information.

If students do not have a team but would still like to participate, volunteers are needed to help with setting up, registration and clean up.

Students may also raise money individually by registering themselves as a corporate sponsor.

"It is great to see the community coming together to work for a common cause, to fight cancer," Smith said. "Everyone walks away knowing that they have done something good for a good cause."

Students wanting more information about Relay for Life can contact Smith at 772-0240.

Anyone who has recently been diagnosed with cancer or whose family member has recently been diagnosed is prompted to call the American Cancer Society at 1-800-ACS-2345. This 24-hour hotline with trained cancer specialists can answer any questions one might have about this disease. Additional information is also available at [www.cancer.org](http://www.cancer.org).



## Continuing Education program reaches for the stars

"Reaching for the Stars: Space Science 1" is a new continuing education activity being offered at Southwestern.

The activity will be held at the Thomas P. Stafford Air & Space Museum on Tuesday evenings, March 6 through May 1. The activity is from 7:00-8:50 p.m. each night.

Dr. Wayne Trail, assistant professor in the Department of Chemistry & Physics, said the activity is directed toward anyone who is interested in gaining knowledge about various space topics including aviation, extraterrestrial life, space colonies, rocketry, radiation, telescopes, the life cycle of stars and more. Various Southwestern faculty will provide instruction on specific topics.

The CE activity may be taken for either accredited continuing education units or SWOSU course credit. The participant fee is \$25. Registration is on a first-come, first-

serve basis. Pre-registration is strongly encouraged due to activity enrollment limits.

Additional information is available by contacting the SWOSU Office of Sponsored Program at 774-7012 or in person at Room 209 of the Stafford Center. If a person wants course credit, they can contact the Registrar's Office at 774-3777.

The Stafford Museum is located at 3000 E. Logan Rd. in Weatherford.



Dr. Wayne Trail will direct the Space Science class.

## Scholarship deadlines approach

By Megan Alexander  
Staff Reporter

It is time for to apply for scholarships again. Southwestern offers many scholarships to new and continuing students on campus.

"For most scholarship information students can go to the Financial Aid Office in room 224 of Stafford or get on the SWOSU website," said Sylvia Miller, a counselor in Student Financial Services.

Some scholarships available include Foundation, departmental, graduate student, transfer student, and continuing undergraduate student scholarships.

They all have spring deadlines varying from March through June.

For information about departmental scholarships, students can ask their department chair.

Students looking for information on Foundation scholarships should stop by the Foundation office located in the Administration building.

Other scholarship opportunities are listed online at [www.swosu.edu](http://www.swosu.edu)



Students can contact Sylvia Miller in the financial aid office for more scholarship information.

"Most scholarship applications are filled out online these days," Miller said.

Miller also said that there are some scholarships never awarded to students because no one applies for them.

For more information, or to speak with a scholarship counselor, students can contact Student Financial Services at 774-3023.



Students can purchase alumni discount cards before they graduate.

## Alumni discount membership cards now available to students

By Heather Felder  
Staff Reporter

Students can now receive an alumni discount card... before they are alumni.

The Dawgs Discount Card is a discount membership card that started out as a promotional item for alumni. This card is now available to all alumni, students, faculty and staff.

Alumni receive their own

discount card for \$30 a year. Students can pay \$10 a year to have it added to their student ID. The discount card can be added to a student's ID in the Institutional Advancement office on the second floor of the Administration Building.

The discount cards can be used in different places all over the United States, said Brandi Gateley, assistant director of Institutional Ad-

vancement. Some of these places include Circuit City, Target and Hertz.

A complete listing of where the card can be used is located on the SWOSU website under the Current Students section.

All revenue taken in from the discount cards goes toward the Alumni Association.

For more information, call Gateley at 774-3736.

## Saluting Seniors



Seniors Allison Krafels and Brandi Wise try on senior rings at the Senior Salute outside the University Bookstore.

Wise looks forward to graduation.

"I'm ready to get out there and start making that money," Wise said.

Seniors are urged to remember to pick up their cap, gown and other graduation accessories. Senior Salute began Monday. Today is the final day to pick up senior items. Seniors may do so from 10 a.m. to 5 p.m.

(Photo by Kristy Wilson)

Senior Salute

Feb. 21

10 a.m. - 5 p.m.

University Bookstore

# ENJOY MUSIC at The Office

Wednesday, Feb. 21

9:30 p.m.

# Karaoke

M-F 1:00-5:00  
Free Pool

Tuesdays 8:00-11:00  
Free Pool

We have outside patio  
& horseshoe pits

Must be 21 & have ID to enter  
No Exceptions!

## THE Southwestern Spring 2007 Staff

Editor ..... Sbarmina Manandbar  
News Editors ..... Lynsie Baskin  
and Bigyan Koirala  
Features Editor ..... Brandi Nabors  
Sports Editor ..... Dawn Nauman  
Copy Editor ..... Kristy Wilson  
Advertising Manager ..... Magbin Merrill  
Advertising Representatives ..... Bridgette Brownback  
Photographers ..... Jonathan Bost  
Bigyan Koirala  
Kristy Wilson  
and Melody Bowen

News Reporting Staff .....  
Megan Alexander, Ariana Farris, Heather Felder, Jose Garcia, Cashlie Hines, Kayla Hulett, Ashley King, Stefani Lamb, Michael McChesney, Randall Pemberton, Marie Smith, Doris Wandrie, Emmy Winslow

Section Editing Staff .....  
Megan Alexander, Donna Drinnon, Jessica Eudem, Linda Giacometti, Darlene Giblet, Ashley King, Abdullah Lawal, Jennifer McDaniel, Sarah Mueggenborg, Nathaniel Perry, Matthew Reid, Telisa Tillman, Emmy Winslow

THE SOUTHWESTERN is the student publication of Southwestern Oklahoma State University. It is published every Wednesday during the fall and spring semesters, except during holidays and finals week. Students in the editing class serve as section editors, and students in the news gathering and reporting class serve as writers.

The editorial board meets every Wednesday at 8:00 p.m. in the journalism lab, Campbell 211.

THE SOUTHWESTERN encourages comments from the student body, faculty and administration in the form of letters to the editor. All letters must include a name for consideration however, the name may be withheld upon request.

The opinions expressed within signed editorials are the opinions of the writers; the opinions expressed in unsigned, boxed editorials are the opinion of the staff. Neither is necessarily the opinion of the university administration, staff or faculty.

### MAILING ADDRESS:

The Southwestern  
Southwestern Oklahoma State University  
100 Campus Drive  
Weatherford, OK 73096

### TELEPHONE:

(580) 774 - 3045

### E-MAIL:

thesouthwestern@swosu.edu

## Stuff happening...

February 21

- \* 10:00 am - 5:00 pm Senior Salute @ University Bookstore Lobby
- \* 12:00 pm Noonday @ BCM
- \* 1:00 pm Residual ACT @ STF 260
- \* 2:00 pm Baseball vs University of Science and Arts @ Athletic Complex
- \* 5:00 pm CAB Battle of the Genders WEL
- \* 7:00 pm American Chemical Society Dinner Student Center Ballroom
- \* USG Corporation (US Gypsum) Interviews BUH (All Accounting and Finance Majors considered)

February 22

- \* 8:00 pm B.A.S.I.C. @ BCM
- \* 1:30 pm Keyboarding @ Assessment Center
- \* Class B Area Basketball Tourney @ Rankin Williams Fieldhouse

February 23

- \* 1:00 pm Baseball vs Texas A&M-Kingsville @ Athletic Complex
- \* 1:15 pm Protection of Human Subjects Committee Meeting @ STF 201
- \* 1:30 pm Keyboarding @ Assessment Center
- \* 2:00 pm Faculty Senate Mtg EDU 201
- \* Softball @ West Texas Tournament
- \* Class B Area Basketball Tourney @ Rankin Williams Fieldhouse
- \* Rodeo Team @ Kansas State University in Manhattan, KS

February 24

- \* 8:00 am- 5:00 pm OSSAA Instrumental Solo/Ensemble Contest @ Fine Arts 102
- \* 1:00 pm Baseball vs Texas A&M-Kingsville @ Athletic Complex
- \* 2:00 pm Women's Basketball @ Texas A&M-Commerce
- \* 4:00 pm Men's Basketball @ Texas A&M-Commerce
- \* Class B Area Basketball Tourney @ Rankin Williams Fieldhouse
- \* Rodeo Team @ Kansas State University in Manhattan, KS
- \* Softball @ West Texas Tournament

February 25

- \* 7:00 pm Wind Ensemble Concert @ FAC
- \* Rodeo Team @ Kansas State University in Manhattan, KS
- \* Softball @ West Texas Tournament
- \* Women's Golf @ St. Mary's University in San Antonio, TX

February 26

- \* 9:00 am Executive Council Mtg @ PCR
- \* 10:00 am Adm Council Mtg @ PCR
- \* 11:30 am Let's Talk About SWOSU @ Student Center Skyview Room
- \* 5:30 pm Business After Hours @ Cells-U-More 2121 E Main
- \* 5:30 pm Sayre Campus Financial Aid Workshop @ CAPPS Bldg.
- \* Freshman Enrollment Today

## BCM and CAB bring fun time with game show

By Stefani Lamb  
Staff Reporter

The Baptist Collegiate Ministries and Collegiate Activities Board will host the "What's Your Final Answer?" game show at 7 p.m. on Feb. 27.

The game show will take place in the Student Union Ballroom. The winner will receive \$300.

Game play consists of four rounds with four players in each round. The first hundred students to register will be entered into a drawing on the night of the competition.

Those selected from the drawing will be asked trivia questions and

must buzz in on a timed buzzer system. If the first person to hit the buzzer is unable to correctly answer the question, the next person will have the chance to answer. After the second person fails to answer the question correctly, the host will then offer the question to a member of the audience who, if answers correctly, would win a prize of up to \$10.

Students can sign up to participate in the drawing within the week prior to the event at a booth in the Student Center.

"Our ultimate goal is for students to come out and have a great time," said BCM director Ron Henderson.

## Participants sought for 24-hour music

A 24-hour musical event that benefits music education programs in western Oklahoma is seeking performers.

Southwestern's 24 Hours of Music, sponsored by Phi Mu Alpha Sinfonia, will be held April 20-21. This is the third annual event that has proceeds benefiting music programs in western Oklahoma schools.

Local and regional bands, as well as Southwestern Music Department performers, are among the participants. Anyone who is interested in participating should contact Eddie Virger at (405) 488-8396 or by email at happyed5@hotmail.com.

For more information, contact any member of Phi Mu Alpha Sinfonia or email Nolan Lawless at lawlessn@student.swosu.edu.

24 Hours of Music will be held at the Fine Arts Center.

## Interlibrary loan expands accessible materials

By EmmyLou Winslow  
Staff Reporter

The Al Harris library offers an interlibrary loan option.

If a student or faculty member is interested in a book or periodical that is not currently on the shelves, they can simply order it from another library.

"I like the interlibrary loan because it's free and I can get a lot of materials not available here at SWOSU," said Adam Stewart, a junior pharmacy major.

"It expands the information I have access to. It's cool that it handles books and movies," he said.

The process begins by filling out an interlibrary loan form at the Reference Desk or Circulation

Desk.

To make this even more accessible, interlibrary loan forms can now be filled out online.

"People can make loan requests through the library website," said Jon Woltz, interim library director.

From the time Southwestern's library places the request with another library, it takes approximately five working days to receive the actual item. If a person requests an article, it may be electronically loaned, which is much faster.

Requests can be placed for books, periodicals, videos and articles.

Once the item is received from the loaning library, the library will contact the student or faculty member and inform them that their item is now available to them.



Jon Woltz serves as the interim library director.

"Libraries have been offering this service for many years because it is almost impossible for one library to have every book and magazine," Woltz said.

## SOEA prepares for spring convention

By Ashley King  
Staff Reporter

The Student Oklahoma Education Association will hold its 2007 Spring Convention March 2-3. The convention will take place in Oklahoma City at the Crowne Plaza Hotel and will include a dinner at Chelino's in Bricktown.

The two-day event will begin with the 3<sup>rd</sup> annual "Outreach to Teach."

"All of the members from across the state choose a school, and they work inside and out to beautify the school," said education professor Vicky Gilliland.

This year the members have chosen Taft Middle School in Oklahoma City.

The second day of the convention will consist of Training Sessions. Topics will range from dealing with aggressive behavior to the rules of professional attire.

Gilliland says that there are approximately 36 Southwestern students registered to attend the convention.

SOEA is a pre-professional organization of undergraduate and graduate students preparing for education careers and is one of the largest student organizations in Oklahoma with programs at over 25 campuses statewide. As a member



SOEA members worked at Westwood Elementary last year as part of their "Outreach to Teach" program. (Photo provided by SOEA)

of the Student Program, students are part of the Oklahoma Education Association and the National Education Association.

Any questions about the convention or SOEA can be directed to Gilliland at 773-3146.

## More Than Medicine

Your 24 hour *On Call* Pharmacy

101 W. Main,  
Weatherford,  
OK 73096

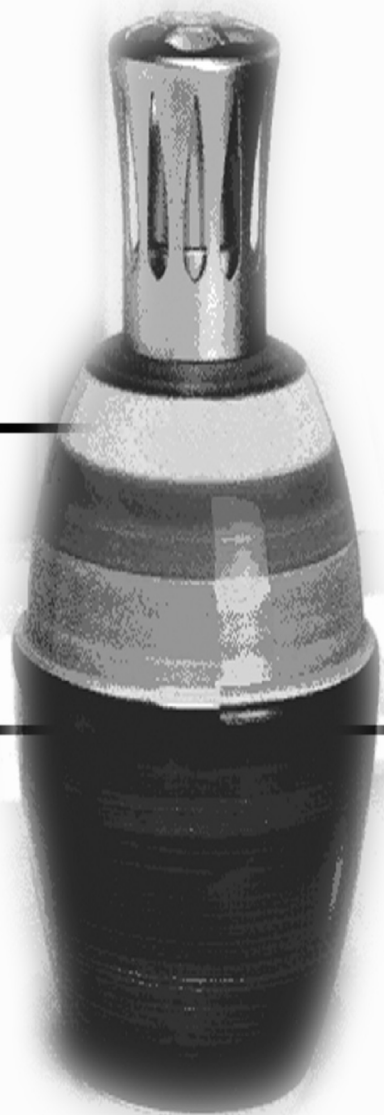
580-772-2781

800-600-7381

Lampe  
Berger

Fragrance  
lamp

Great for  
dorms

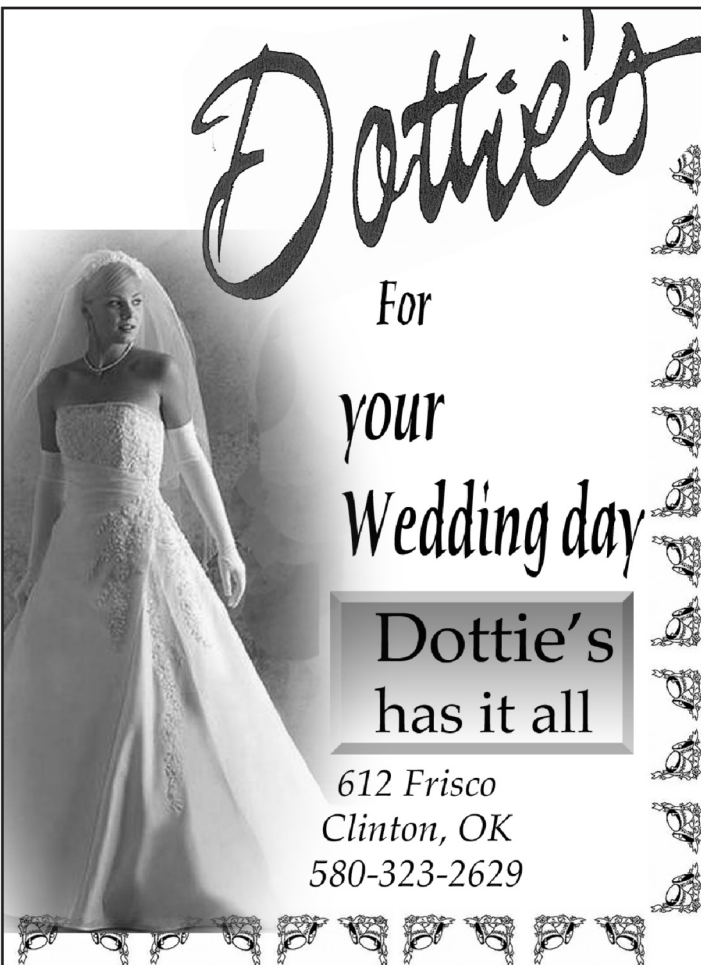


# Dottie's

For  
your  
Wedding day

Dottie's  
has it all

612 Frisco  
Clinton, OK  
580-323-2629



## Pink Turtle Gifts and Hallmark Cards

Yankee  
Candles

Willow Tree  
Angels

Hallmark  
Keepsake  
Ornaments

Bean Pod  
Soy Candles

Wedding Invitations  
Bridal Registry

Hallmark Cards & Gifts for every occasion  
110 West Main • Weatherford • 772-1666

## Black History Month : Remembering Malcolm X

By Doris Wandrie-Thunderbull  
Staff Reporter

Malcolm X was born in Omaha, Neb., as Malcolm Little. He later denied his last name "Little" because of the experience of the hatred his family endured during childhood when the Ku Klux Klan burned down his house.

The family later moved to Lansing, Mich. where he continued to experience the effects of racism when his family's house was again burned down by the KKK.

According to Steve Ray, faculty sponsor of the Black Student Association, "Before judging Malcolm, we have to understand the context of the situation in which he grew up. Malcolm's father, a very outspoken Baptist minister, was constantly threatened by the KKK."

After their house was burned down for the second time, Malcolm's father was found dead laying across the railroad tracks. The police ruled both cases as "ac-

cidental." This led to the nervous breakdown of his mother, who was later admitted to a mental institution. Malcolm and his other 7 siblings were split up into various foster homes and orphanages. Malcolm learned at an early age to dislike and distrust whites and he presented himself as such throughout most of his lifetime.

Malcolm took a trip to Mecca in Saudi Arabia in 1964 where

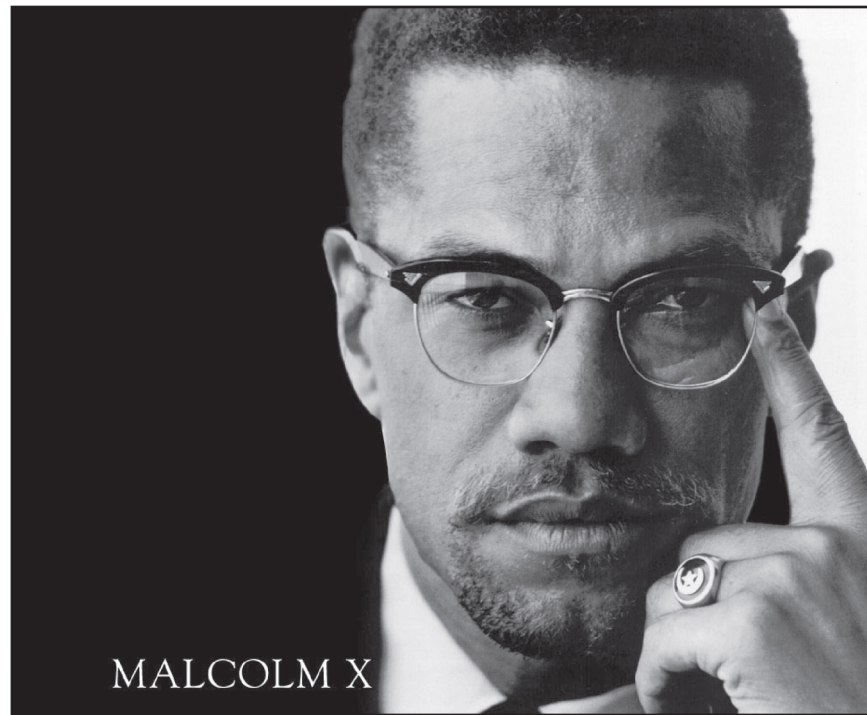
after engaging in the civil rights movement.

"Malcolm made a huge difference to those who felt oppressed and he sent a strong message to those oppressors that he was not going to let anyone deny his freedoms," Ray said.

"Malcolm felt he had to be a strong advocate against the injustices by whites against his race. He was a very dynamic and articulate person," Ray said. "In fact, the New York Times in 1963 listed him as the second most sought-after speaker in the United States."

According to Ray, Malcolm's belief was that he wanted the black people to organize themselves and work together in unity with each other to improve their conditions during those times.

"Malcolm was very loyal to those who were loyal to him and very respectful to those who respected him. His hostility was against those who he felt garnered hatred for him and his race," Ray said. "He summed it up very well in the following quote 'I believe in treating people right, but I'm not going to waste my time treating



*"I believe in treating people right, but I'm not going to waste my time treating somebody right who doesn't know how to return the treatment."*

- Malcolm X

he studied the Orthodox Islamic culture and visited the Holy City. It was after this trip that he had a changed view on conquering racism through unity.

Despite the atrocities of Malcolm X's childhood, he sought change

somebody right who doesn't know how to return the treatment."

"I think Malcolm was very courageous to stand up against racism at such a dangerous time in history. Even though some may view some of his ideas as extreme, such as separating the races, he is still an important figure in black history. Given the circumstances

surrounding the tragic death of his father and the splintering effect it had on his entire family, I think he is owed more apologies than he has to give," Ray said.

According to Ray, Malcolm X was an honest and dedicated man whose goal was to uplift the African American people by organizing their way of life.

## Spotlight on Students

Every week, The Southwestern will spotlight a few students for no better reason than they're really cool. And the reason they're really cool is because they're Bulldogs. So here are some facts about this week's students...

### Allen Harrison

Classification: **Sophomore**  
Major: **Mass Communication**  
Hometown: **Kingfisher**

1) **What is your hometown best known for?**

You don't want to know.

2) **What's your favorite ice cream flavor?**

I'm lactose intolerant, but probably chocolate almond.

3) **How many times did you have to take your driving test before you passed?**

Twice...yeah, that's not a typo.

4) **Favorite thing about SWOSU.**

All the great parking spots

5) **3 Things you can't live without.**

Music, air, TV

6) **Who is your idol?**

The counter culture



7) **Favorite item of clothing.**

Birthday suit

8) **Describe yourself in 3 words.**

Crazy, funny, satirical

9) **Celebrity you most resemble.**

Jim Breuer

10) **If you could have any super power, what would it be?**

Stackin' mad amounts of cash instantly

### Teisha Tallbear

Classification: **Freshman**  
Major: **Elementary Education**  
Hometown: **Thomas**

1) **What is your hometown best known for?**

Tradition

2) **What's your favorite ice cream flavor?**

Orange sherbert

3) **How many times did you have to take your driving test before you passed?**

Took the written test four times, the driving one once

4) **Favorite thing about SWOSU.**

The Wellness Center

5) **3 Things you can't live without.**

Cell phone, chapstick, camera

6) **Who is your idol?**

Adriana Lima



7) **Favorite item of clothing.**

Shoes

8) **Describe yourself in 3 words.**

Fun, fierce, flirty

9) **Celebrity you most resemble.**

Dunno.

10) **If you could have any super power, what would it be?**

Ability to fly, I guess.

## BULLDOG BITES

What are you doing to stay warm during the winter?



"Dressing warm and staying inside."

Susan Davidson  
Junior, Health Care Administration  
Mangum



"Staying in and eating good food."

Pinkey Patel  
Junior, Pre-Pharmacy  
Chandler



"Wearing two sweaters."

John Blackbear  
Freshman, Accounting  
Watonga

(580) 772-3700  
Bus.  
Monday thru Saturday

### The Rusty Nail Hair Styling

Specializing in Today's Hairstyles  
Service for the Whole Family

Owner/Stylist  
Randy Sehi

522 N. State  
Weatherford, OK 73096

Some charge for missed appointments.

### Southwest Cellular Tanning

1123 E. Davis Rd.  
Weatherford, OK 73096  
(580) 774-7555

**WINTER SPECIAL**  
2 months unlimited tanning for only \$40.00

Now Open  
Mon-Fri: 9am-8pm and Sat: 9am-3pm  
-For extended tanning hours-

### Uptown Market Place

Flowers or Gifts for all Occasions

Tyler Candles -- "The Best Candle"  
Cash and Carry Flowers  
Your Wedding Specialist

100 E. Main Weatherford, OK 73096  
Monday-Friday 9:30-5:30 & Saturday 9:30-4:00  
772-2238 or 888-772-2238 toll free  
All major credit cards accepted-www.uptownmarketplace.com

## MOVIE REVIEW

### Norbit

When going to the movies to see an Eddie Murphy flick, you have an idea of what the movie is going to be like. Much of the same humor is in all Eddie Murphy's comedic films, and *Norbit* is no different. *Norbit* is not an Academy Award winner and should be seen only by those who have nothing to do with their day.

The story opens with a school-aged Norbit, saying his "I do's" to his childhood sweetheart, Kate (Thandie Newton). She is then adopted from the orphanage where they both attend.

Soon after, Norbit becomes boyfriend-elect to the dreaded Rasputia.

Norbit and Rasputia get married and Norbit lives a life of fear working for Rasputia's three brothers. The story takes a turn when Norbit's old friend, Kate, comes back to town to take



ing multiple characters. Just like in "The Nutty Professor," Eddie Murphy goes above and beyond when he plays the part of Norbit, Rasputia, and Mr. Wong.

The movie verges on being a romantic comedy, however there is not enough smart wit or inclusive love scenes to grant it this title.

My advice would be to skip this movie in the theatre, save your money for something more important, and catch it on a boring Saturday night when it comes out on video.

-- Cashlie Hines

over the orphanage where both she and Norbit had once lived.

There were a few times that I laughed out loud, but these acts of true humor were few and far between.

The best thing about this movie is Eddie Murphy play-

## Students sound off on Oscar hopefuls

By Ariana Farris  
Staff Reporter

The 79<sup>th</sup> Academy Awards take the stage Sunday, February 29 at 7 p.m. on ABC. Nominated for Best Actor include:

Leonardo DiCaprio for his portrayal of Danny Archer in *Blood Diamond*. Archer is a greedy Zimbabwean diamond smuggler with a murky military history.

Ryan Gosling as Dan Dunne in *Half Nelson*. Nelson is a barely functioning high school teacher addicted to drugs. Gosling found the balance between competence and collapse in order to earn his Oscar nomination.

Forest Whitaker as the Ugandan dictator in *The Last King of Scotland*. Whitaker presented the dictator as a man obsessed with warfare and a savvy strongman with charm to balance his ruthlessness.

Will Smith as the real life Chris Gardner in *The Pursuit of Happyness*. Gardner battled poverty before he landed a chance as an intern at a brokerage house which later led him to become a stock broker.

Smith favors on the side of some students as the best actor to take home the gold statue.

"He always is in some sort of action movie." Heidi Falconer, a pre-pharmacy major from Tom Bean, TX said. "This movie is more of a look into a certain person's life. It's personal to people."

"The movie was really emotional for something for him," Jess More, a theatre major from Burns Flat, said. "He put more into it than he normally puts in. It was beyond his expectations." Peter O'Toole is also up for

Best Actor. He took the role of a compassionate and passionate thespian who is in a relationship with a woman young enough to be his granddaughter.

Best Actress nominees are Helen Mirren as Queen Elizabeth II in *The Queen*. This movie is set the week following Princess Diana's death but focuses on the Queen's reluctance to mourn a person who became bothersome to her.

Meryl Streep was nominated for *The Devil Wears Prada*. Streep plays a demanding,



*Scandal* as a high school teacher whose empty life has left her brittle with her diary as her only outlet.

Penelope Cruz as Raimunda in *Volver*. Cruz plays a working-class mom in a story about mothers, daughters and the men who try to come between them.

Best Supporting Actor nominees include Djimon Hounsou in *Blood Diamond*, Alan Arkin in *Little Miss Sunshine*, Eddie Murphy from *Dreamgirls*, Mark Walberg of *The Departed* and Jackie Earle Haley in *Little Children*.

"I think Eddie will win best supporting actor because he did a good job in this film," Ocener said.

Nominees for Best Supporting Actresses include Jennifer Hudson for *Dreamgirl*; Rinko Kikuchi, *Babel*; Cate Blanchett, *Notes on a Scandal*; and Adriana Barraza, *Babel*.

Animated Feature Film nominees include, *Cars*, *Happy Feet* and *Monster House*.

"Cars will win because it is so in depth with how they did everything," Moore said. "The artwork seemed so real."

Nominees for Art Direction include *Dreamgirls*, *The Good Shepherd*, *Pan's Labyrinth*, *Pirates of the Caribbean: Dead Man's Chest* and *The Prestige*.

"The art in *Pan's Labyrinth* will win. They didn't limit anything. There was no limit to the art," said Moore. "I couldn't keep my eyes off it."

Judi Dench earned her nomination in *Notes on a* For a full list of nominees, visit [www.oscar.com](http://www.oscar.com).



## MOVIE REVIEW

### Hannibal Rising

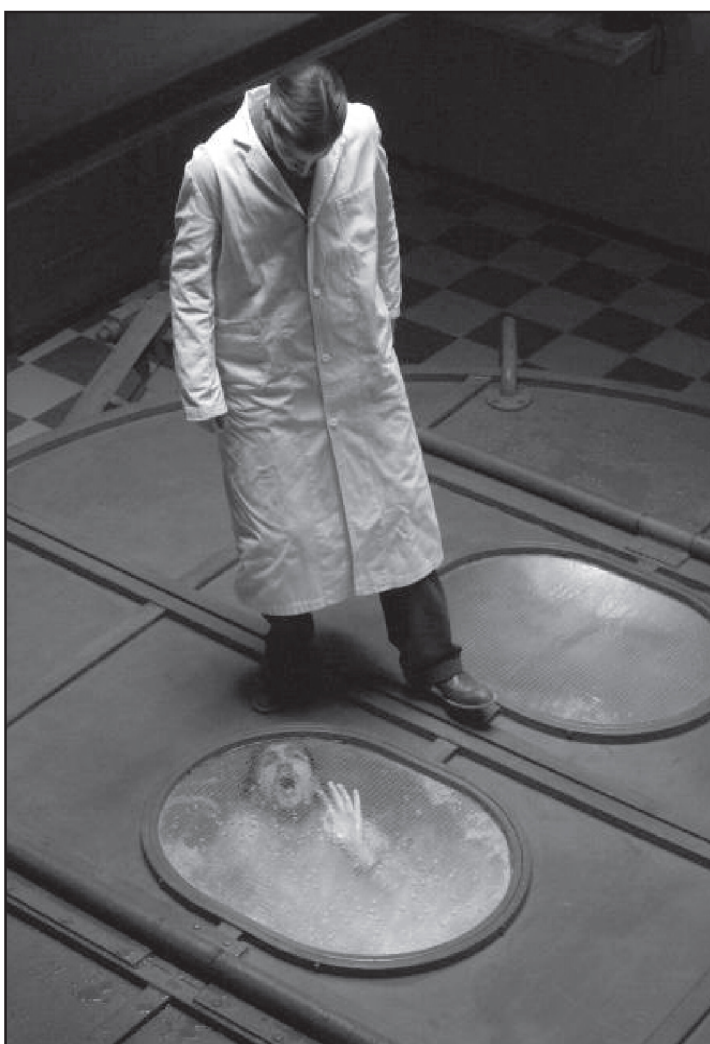
In the newly released *Hannibal Rising*, the story of how Hannibal Lecter came to be is told.

The movie goes into Hannibal's past, going back to Lithuania, to a cabin the family lives in between the German and Soviet lines. Hannibal's parents try to protect him and his sister from the war, but a fight between a Russian tank and a German plane leaves both parents dead.

As Hannibal cares for his young sister, the home is overtaken by group of local thugs who are looting the locals but now must hide to avoid being shot and killed. Being cold and hungry the men decide that perhaps one of the children might fill their bellies, but we don't see what happens, leaving the mind to wonder.

The story moves forward eight years, to Hannibal staying at an orphanage that was once his family's castle. He eventually escapes the orphanage and locates his friendly aunt (Gong Li), who gives him a place to stay and helps him deal with dreams of his sister.

Here, the movie becomes somewhat funny as the aunt trains Hannibal in the ancient Eastern martial arts. After his vigorous training Hannibal heads off to a French medical school, where he practices his dissections on the bodies in



the morgue. But as he grows older and more skilled, he becomes interested in finding the gang of looters who attacked him and his sister when he was younger.

Because this is of course Hannibal, you will not be surprised as he seeks revenge in hideous ways.

But once again, the movie draws more laughs than scares, as Hannibal con-

stantly reminds his victims of their crimes.

The movie keeps your interest, but this series of the gory and frightening life of Hannibal Lecter is more than likely going down the drain. Wait till this movie comes out on DVD to even spend your money viewing it.

- Abdullah Lawal

"A future with no limits starts at Farmers."


Deciding on a major can be tough. But deciding where to start your future is easy. At Farmers Insurance there are no limits to what you can accomplish. If this is how you see the future, you belong at Farmers. It all starts here.

Rewarding, growth-oriented opportunities are available in Oklahoma City for:

- Office Claims Representatives
- Total Loss Specialists

If you are ambitious, motivated and ready to put your degree to work, Farmers has what you're looking for in a career. What's in it for you? Compensation and benefits that include competitive starting salaries, paid training programs, tuition reimbursement, profit sharing, medical/dental/life insurance and a lot more.

Find out why you belong at Farmers.  
Apply online at [www.farmers.com](http://www.farmers.com)  
or see us on campus. EOE.



[www.farmers.com](http://www.farmers.com) FARMERS

## Loss eliminates Lady Bulldogs from postseason games

TAHLEQUAH – Southwestern Oklahoma State University's recent mastery over the Northeastern State women's basketball team came to an end Saturday as the Bulldogs fell 60-47 and were officially eliminated from post-season play. The loss was SWOSU's first in five previous meetings against the Lady Reds and dropped its record to 8-16 overall, and 2-8 in the Lone Star Conference North Division. NSU improved to 14-10 and 5-5 overall with the win.

SWOSU got 10 points from both Dru Tomaszewski and Grace Anne Jones to lead the team in scoring. NSU was led by Jezzal Quintana with 17 points.

The Bulldogs stayed close for much of the first half and even had the game tied midway through the second when Ashlea Hoffman made a three-pointer to knot the score at 36-all with 9:13 to play. NSU answered with an 11-2 run of their own and pushed the margin back to 47-38 with 5:11 to play.

SWOSU made one last charge when Jones converted a three-point play to bring the Bulldogs back within six points at 49-43 with 3:30 remaining. However, the Bulldogs turned the ball over on their next possession and missed a three-point basket that allowed the Lady Reds to wiggle off the hook.

The Bulldogs made 18-of-41 (44%) of their shots from the field but were undone partially by 20 turnovers, eight more than NSU. The turnover discrepancy led to NSU having a 21-8 advantage on points scored off of turnovers.



Jose Garcia goes for a layup during recent home action. Garcia and the Bulldogs will play at Texas A&M-Commerce for a chance at the playoffs Saturday.

## Men's team suffers road problems

Southwestern Oklahoma State University was unable to remedy its trend of lackluster play on the road losing 81-73 to Northeastern State University Saturday in Tahlequah. Even with the loss, SWOSU's seventh straight on the road, the Bulldogs still have an impressive 16-8 overall record and remained tied for fourth in the Lone Star Conference North Division at 4-6.

The Bulldogs will close the regular season against Texas A&M-Commerce Saturday on the road. SWOSU will likely need to win at least one of the two games in order to have a chance at qualifying for the eight-

team LSC Postseason Tournament scheduled to begin Tuesday, Feb. 27.

Jose Garcia had 17 points and Ryan Mann added 13 for the Bulldogs who were losers to NSU for the first time in six tries. Lamont George had 19 points for the Redmen who improved to 9-15 and 4-6 with the win.

SWOSU trailed the entire second half after being down 39-34 at the break. The Bulldogs got behind by as many as 11 before they had a brief flurry thanks to a basket by Reggie Gunn and a three-pointer by Mann that brought them back.

Mann's three-pointer put SWOSU back in the game at 61-56 with 7:39 to play.

NSU scored the next five points on its way to a 14-5 run. Mike Bontrager sunk a long-range three-pointer to give NSU a 75-61 lead with 2:46 left and put the game away for good.

SWOSU made only 27-of-69 (39%) of its shots, its second worst shooting effort of the season. NSU was much more efficient making 27-of-51 (53%) of its field goal attempts. The Redmen out rebounded SWOSU by 10 and held the Bulldogs fast-break offense in check the entire 40 minutes.

## Flaman first softball player to homer twice secures win against Adams State

Southwestern's softball team's new-look showcased its most recent addition with the unveiling of slugger Alli Flaman.

The Canadian-born player was the star in the Bulldogs' 10-1 victory against Adams State Saturday in Weatherford.

Flaman became the first SWOSU player in six years to hit two home runs in a single game when she hit a pair of two-run blasts in the first and sixth inning. The last of which put SWOSU far enough ahead that the game was called after six innings because of a run rule.

Sophomore, Kaci Carpenter, got her first start by going four and one-third innings, allowing one unearned run and scattering five hits. Carpenter struckout four and walked four before Flaman came on in relief in the fifth.

Flaman did not allow a hit in one and two-thirds innings, striking out four and walking three to pick up the save.

The win over Adams State helped ease the bitterness that remained after the Bulldogs essentially gave away the first game in a 2-1 loss to the Grizzlies Friday.

In that game, Adams State came up with the winning run in the seventh inning because of some unfortunate circumstances for the Bulldogs. ASC leadoff hitter reached on an error and advanced to third on a single by Kim Ensey. Romberg and Ensey were then awarded the next base when SWOSU pitcher, Alex Zuckerman, lost her balance on the mound and stopped her windup in the middle of her motion. Zuckerman was called for a balk allowing Romberg to score the winning run.

## Matt's Service Center

needing a part-time auto mechanic

Apply in person at Matt's Service Center at I-40 & Highway 54

For all your Pet & Computer Needs

## The Aquarium

580-772-6421

www.theaquariumweatherford.com  
Amber Hudson & Nova Long



## TechNet Solutions

580-772-2224

www.technetsolutions.com  
Chris Hudson

214 W. Main • Weatherford, OK 73096

Through with Chew



First Warning Sign of Cancer.

SPIT TOBACCO:  
Not a Safe Alternative

Oklahoma Tobacco Helpline  
1 800 QUIT NOW

WWW.WOTCP.ORG

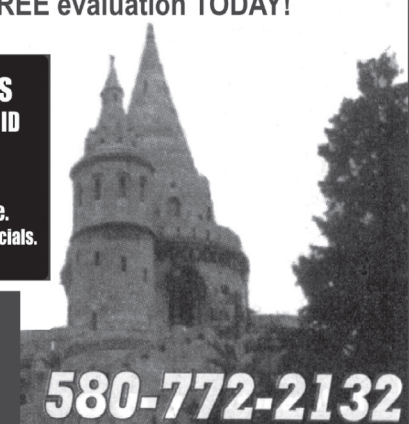
The Great American Spit Out  
Thursday February 22, 2007.  
A Part of  
Through With Chew Week

## CITADEL COMPUTER SYSTEMS

Proudly Serving the People of Western Oklahoma since 1994

Is someone tracking you? Is someone watching where you go on the internet? Spyware is a real threat in today's internet environment. Ger your FREE evaluation TODAY!

SWOSU students be sure to present your ID and receive a 10% labor discount and 5% discount on hardware. This is exclusive of all other specials.



113 W. Main  
Weatherford

580-772-2132



PARADISE ISLAND TANNING

Start an Endless Summer package NOW thru February 28th and get \$10 OFF your first month and a start up bag with all the essentials you'll need including lotion!

123 N. Bradley

774-1859

M-F 9:30-8 Sat 12-4 Sun 1-5

## Bulldog Profile

Kaci Carpenter - Softball

Heather Felder  
Staff Reporter

Kaci Carpenter, a sophomore from Murray, Kentucky, Majoring in English, is a pitcher for the SWOSU softball team.

Carpenter started playing T-ball around age 6, and fast pitch at the age of 10. She started playing ball to give her something to do during the summers. Now, it is a big part of her life. Carpenter is a returning star pitcher for the Bulldogs.

Little did Carpenter know she would turn out to be so talented in this sport. In high school, Carpenter made All-State, All-Region, All-District, and Player of the Week. She was also part of her high school softball team when they made it to the state tournament for the first time when she was a sophomore.

After mentioning her achievements, Carpenter laughs it off by saying "Yeah, I was okay."

"The team's goal this year is to go to the College World Series," Carpenter said.

Their first game takes place on Friday, Feb. 16 at 2 p.m.. They will also be playing at the West Texas Tournament on Feb. 23 and 24 starting at 1 on Friday. Nationals will take place in the month of May in Akron, Ohio.



## Baseball team looks to fill key positions

By Michael McChesney  
Staff Reporter

The SWOSU baseball team will play its first home game today at 2 p.m. against USAO. The team will try to better its 21-31 record from last season.

Improvement will not be easy as many questions are left unanswered. Head coach Charles Teasley and assistants Zack Saunders, Jared Prock and Brady Hybsha are faced with the task of replacing Landon Thompson, Garion Davenport and Tanner Dewald, the teams' top three batters from last season.

The top three pitchers, Caleb Briggs, Dustin Anderson and Colby Tackett, will also have to

be replaced

The team will have a new pitching rotation focused on senior Jeff Keller, who went 3-2 last season with a 6.32 ERA in 37 innings.

At the plate, all eyes will be focused on Ryan Pease and Sean Rogers to pick up the slack. The duo accounted for 49 RBI and 7 home runs last season.

The team will focus on bettering their win percentage on the road. Last year, the Bulldogs won only 6 of 19 road games.

Many things are still left undecided, but with the few key returning players and some promising recruits, the future of the baseball team seems to be promising.

## Spring rodeo season starts at Kansas State

The Southwestern men's and women's rodeo teams will travel to Kansas State this weekend for their first spring rodeo.

The rodeo will take place in Manhattan, Kan., from Feb. 23 to Feb. 25.

Southwestern finished last semester with a good showing at Northwestern. The women placed first and the men finished fourth.

Maddie Craig and Brit-

tany Wiedel lead the women's team in the breakaway roping and barrel racing. On the men's side, Monty Goodwin and Dusty Gracia excelled at bareback riding, and Jesse Jackson and Daniel Gardner were the top bullriders.

The Kansas State rodeo is the first of seven for Chad Ramirez's teams. Southwestern will host a rodeo April 12-14.

### 2007 SOFTBALL SCHEDULE

Date	Opponent	Site	Time
<b>February</b>			
Feb 9	Washburn University	Weatherford	1pm / 3pm
Feb 13	Oklahoma Christian	Edmond	1pm / 3pm
Feb 16-17	St. Gregory Tournament		TBA
Feb 20	Panhandle State University	Weatherford	2pm / 4pm
Feb 23-25	West Texas Tournament		TBA
Feb 27	Oklahoma Christian	Weatherford	2pm / 4pm
<b>March</b>			
Mar 1	Southern Nazarene University	Weatherford	2pm / 4pm
Mar 2-3	UCO Tournament	Edmond	TBA
Mar 10	University of Central Oklahoma	Weatherford	1pm / 3pm
Mar 13	University of Central Oklahoma	Edmond	2pm / 4pm
Mar 16	East Central University	Ada	2pm / 4pm
Mar 17	East Central	Weatherford	1pm / 3pm
Mar 22	Oachita Baptist University	Weatherford	1pm / 3pm
Mar 24	Cameron	Weatherford	1pm / 3pm
Mar 27	Cameron	Lawton	2pm / 4pm
Mar 30-31	Conference Tournament		TBA
<b>April</b>			
Apr 5	St. Gregory University	Weatherford	2pm / 4pm
Apr 6	Southern Nazarene University	Bethany	2pm / 4pm
Apr 10	Southeastern University	Weatherford	2pm / 4pm
Apr 14	Southeastern University	Durant	2pm / 4pm
Apr 17	Northeastern University		2pm / 4pm
Apr 21	Northeastern University	Weatherford	2pm / 4pm
Apr 24	Midwestern	Weatherford	2pm / 4pm
Apr 25	Southern Nazarene University	Bethany	1pm / 3pm
Apr 28	Midwestern	Weatherford	2pm / 4pm
<b>May</b>			
May 3-5	LSC Post Tournament		TBA
May 10-12	NCAA Regional Tournament		TBA

Bold indicates home contests  
\* indicates LSC North opponents

### 2007 BASEBALL SCHEDULE

Date	Opponent	Site	Time
<b>February</b>			
Feb 13	Southern Nazarene University	Bethany, OK	2 pm
Feb 16	Tarleton State University	Stephenville, TX	4 pm
Feb 17	Tarleton State University	Stephenville, TX	1 pm
Feb 21	University of Science & Arts	Weatherford, OK	2 pm
Feb 23	Texas A & M University-Kingsville	Weatherford, OK	1 pm
Feb 24	Texas A & M University-Kingsville	Weatherford, OK	1 pm
<b>March</b>			
Mar 2	Eastern New Mexico University	Portales, NM	4 pm
Mar 3	Eastern New Mexico University	Portales, NM	1 pm
Mar 6	St. Gregory's University	Shawnee, OK	2 pm
Mar 9	Abilene Christian University	Weatherford, OK	1 pm
Mar 10	Abilene Christian University	Weatherford, OK	1 pm
Mar 13	Southern Nazarene University	Weatherford, OK	2 pm
Mar 15	Angelo State University	San Angelo, TX	5 pm
Mar 17	Angelo State University	San Angelo, TX	1 pm
Mar 23	West Texas A&M University	Weatherford, OK	1 pm
Mar 24	West Texas A&M University	Weatherford, OK	1 pm
Mar 28	Southeastern Oklahoma State University	Weatherford, OK	2 pm
Mar 30	Northeastern State University	Weatherford, OK	3 pm
Mar 31	Northeastern State University	Weatherford, OK	1 pm
<b>April</b>			
Apr 4	University of Central Oklahoma	Edmond, OK	2 pm
Apr 6	Cameron University	Weatherford, OK	3 pm
Apr 7	Cameron University	Weatherford, OK	1 pm
Apr 11	East Central University	Weatherford, OK	2 pm
Apr 14	Southeastern Oklahoma State University	Durant, OK	2 pm
Apr 15	Southeastern Oklahoma State University	Durant, OK	1 pm
Apr 18	Northeastern State University	Tahlequah, OK	2 pm
Apr 20	University of Central Oklahoma	Weatherford, OK	3 pm
Apr 21	University of Central Oklahoma	Weatherford, OK	2 pm
Apr 25	Cameron University	Lawton, OK	2 pm
Apr 28	East Central University	Ada, OK	1 pm
Apr 29	East Central University	Ada, OK	2 pm

Date	Site	Location
<b>September</b>		
Sep 29	Colby Community College	Colby, KS
<b>October</b>		
Oct 6	Pratt Community College	Pratt, KS
<b>November</b>		
Nov 9	Northwestern Oklahoma State University	Alva, OK
<b>February</b>		
Feb 23-25	Kansas State University	Manhattan, KS
<b>March</b>		
Mar 2-4	Garden City Community College	Garden City, KS
Mar 9-11	Fort Scott Community College	Fort Scott, KS
<b>April</b>		
Apr 5-7	Panhandle State University	Guymon, OK
Apr 12-14	Southwestern Oklahoma State University	Weatherford, OK
Apr 20-22	Fort Hays State University	Hays, KS
Apr 26-28	Southeastern Oklahoma State University	Durant, OK
<b>June</b>		
Jun 10-16	College National Finals Rodeo	Casper, WY

## It's all about moi! Designs by Tamara

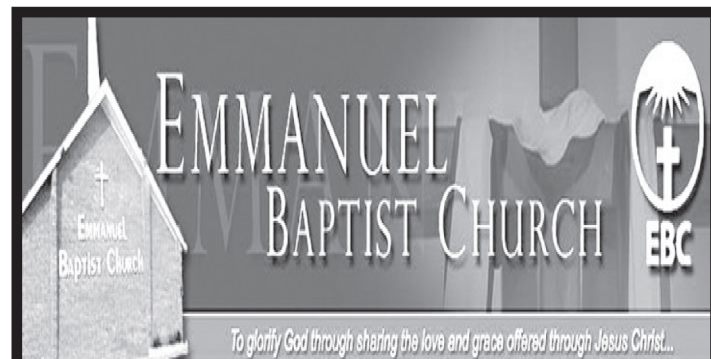
Bring in this coupon and receive a free gift with a \$20.00 purchase from It's all about moi! Designs by Tamara (L.S.M.) on main Street look for the gold and cream awning.

209 W. Main Weatherford OK 73096 580.774.2088



Tanning - Toning - Hair - Nails  
Always GREAT BEDS - GREAT TANS Always  
**STUDENT SPECIALS!!**  
No Appointment Necessary

\*\*\*\*\*  
**Full Service Hair/Nail Salon**  
**1709 E. Main (Old 66 Hwy)**  
Walkins Welcome **580-772-1935** Walkins Welcome



719 N. Kansas (580) 772-3413  
Sunday School 9:30am  
Sunday Morning Worship 10:45am  
Sunday Night Worship 7:00pm  
Wednesday Night Meal (1st visit free) 5:00pm  
College Bible Study (Wed) 8:45pm  
[www.ebcweatherford.com](http://www.ebcweatherford.com)



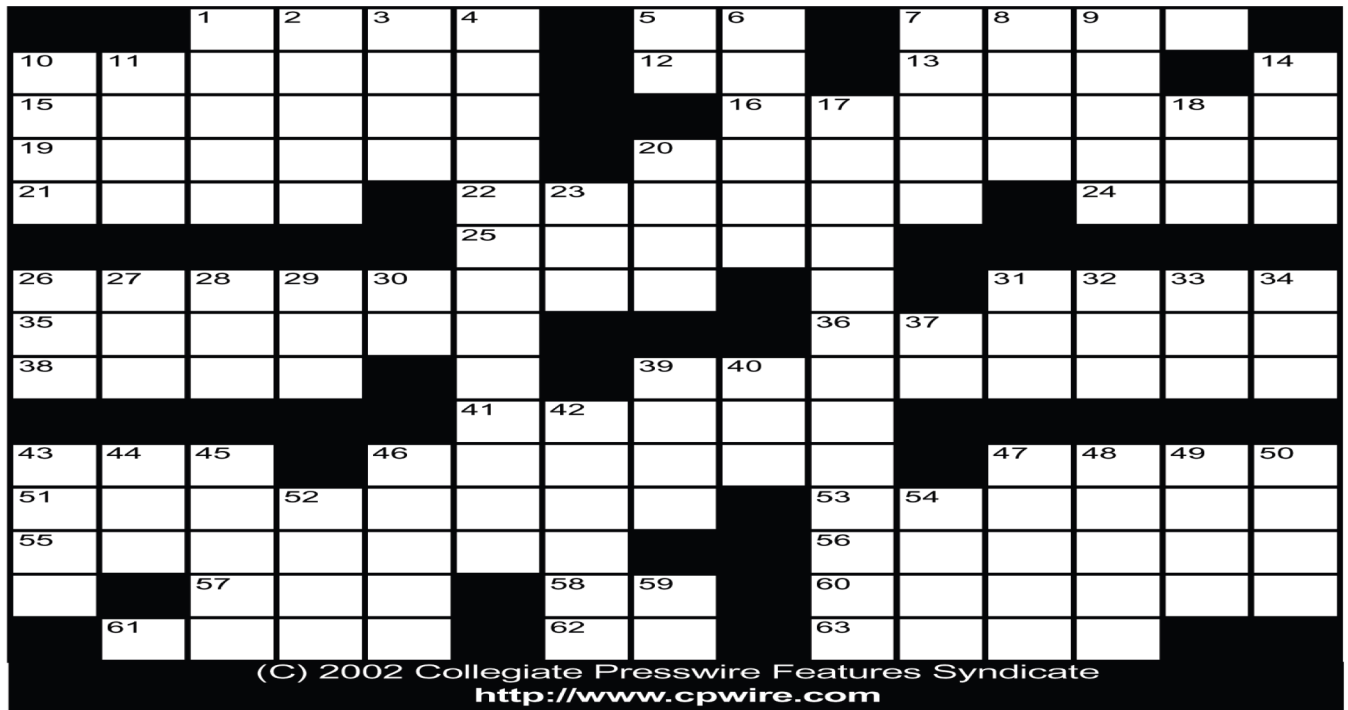


### ACROSS

1. Before the storm
5. "She'll be there \_\_\_\_\_ 3 p.m."
7. Seven year \_\_\_\_\_
10. Lassie
12. Opposite of Yes
13. There are seven
15. Begone! (Imperative verb)
16. Mentally exhausted
19. State next to California
20. Without people
21. A ballerina dances here
22. Madman
24. Wily
25. Long ago times
26. Hair color
31. Rose \_\_\_\_\_
35. The highest point
36. Spain and Portugal
38. To neaten
39. The conscience
41. Carmen, e.g.
43. Baha
46. Obliquely
47. Tibetan priest
51. Unwholesome
53. "In the same book"
55. A clam
56. Overly showy
57. A tide
58. Present indicative of he
60. Prods
61. A major star
62. Hair style
63. Eye ailment

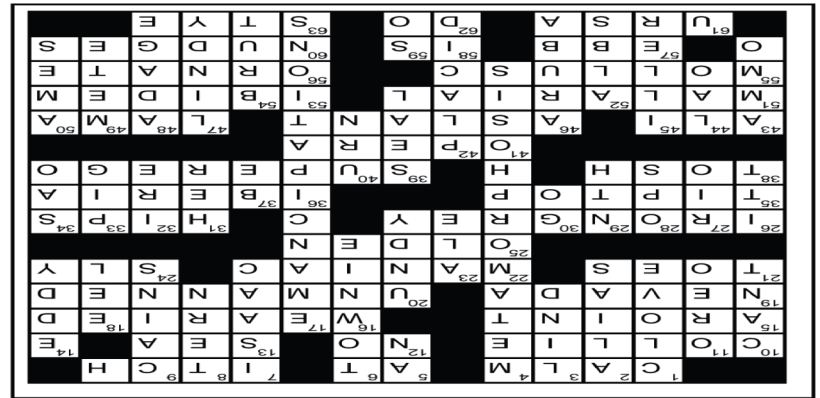
### DOWN

1. Piece of garlic
2. False name
3. Opera singer Jerry
4. Change from one stage to another
5. Actinon chemical symbol
6. One not living on campus
7. Managing Editor of "Sports Night"
8. Sea bird
9. Percentages of Irish farm crops
10. Whining speech
11. Nabisco cookie
14. Whirl
17. States of being free
18. Elongated fish
20. One puts this on first



(C) 2002 Collegiate Presswire Features Syndicate  
http://www.cpwire.com

23. Malt beverage
26. Hotel parent company
27. "Learn it to"
28. Roman Goddess of plenty
29. A degree
30. Pass this and get \$200
31. Female
32. Rage
33. Young swine
34. Portuguese saint
37. To occupy a space
39. A stamp
40. Where ashes lie
42. A NY lake
43. Military supplies
44. A people of Northern Thailand
45. Sicker
46. Island in the New Indies
47. A 30's dance
48. A traditional saying
49. Allot
50. Singing brothers
52. Priestly garments
54. After shave brand
59. Thus



## NEED INK NOW?



**ONLY \$10**  
for a printer cartridge refill  
at *Walgreens*  
*ready in minutes!*

**\$10** Printer Cartridge Refill

100% Quality Guaranteed.  
Color or black ink. Coupon must accompany purchase. Limit one refill per coupon. Refills available at select Walgreens. Offer expires 1/31/07

Walgreens In-Store Photo Coupon



Just clip the coupon and bring it along with your empty ink cartridge to a Walgreens location below. Your refill is ready in minutes, you're in and out with no hassle and the quality is guaranteed. If only finals were this easy!

**Your Nearest Walgreens**  
Washington & Main/Rte 66  
1019 E Main Street  
(580) 772-2613

## Sudoku

3		2	5	1				
		2	8					
	9	6					4	
2							9	
	8						6	
	4							7
	2			4		1		
			5		3			
		9	8		3			2

© 2007 KrazyDad.com

Sudoku: Number puzzle in which numbers must be fit into a 9x9 grid such that each numeral appears exactly once in each row, column and each of nine 3x3 blocks

4	7	9	8	1	3	6	5	2
8	1	6	9	5	2	3	7	4
5	2	3	7	6	4	9	1	8
6	4	1	3	9	8	5	2	7
9	8	5	1	2	7	4	6	3
2	3	7	5	4	6	8	9	1
7	9	8	6	3	1	2	4	5
1	5	2	4	8	9	7	3	6
3	6	4	2	7	5	1	8	9

## Dental Hygiene Clinic FREE Screening

Now accepting patients

Call 772-0294 for a FREE screening

**OU Dental Hygiene Clinic at Western Technology Center**  
2605 East Main  
Weatherford, OK 73096

Dental Hygiene Services include:  
Adult cleaning.....\$10  
Scaling and Root Planing.....\$5-\$20  
Sealants (per tooth)...\$3  
X-rays.....\$2-\$10

## off the mark by Mark Parisi

