



## Echoes from the Hill

Southwestern Oklahoma State University Office of Institutional Advancement and Alumni

Follow this and additional works at: <https://dc.swosu.edu/echoes>

---

### Recommended Citation

Southwestern Oklahoma State University Office of Institutional Advancement and Alumni (1999) "Echoes from the Hill," *Echoes from the Hill*: Vol. 81 : Iss. 2 , Article 1.

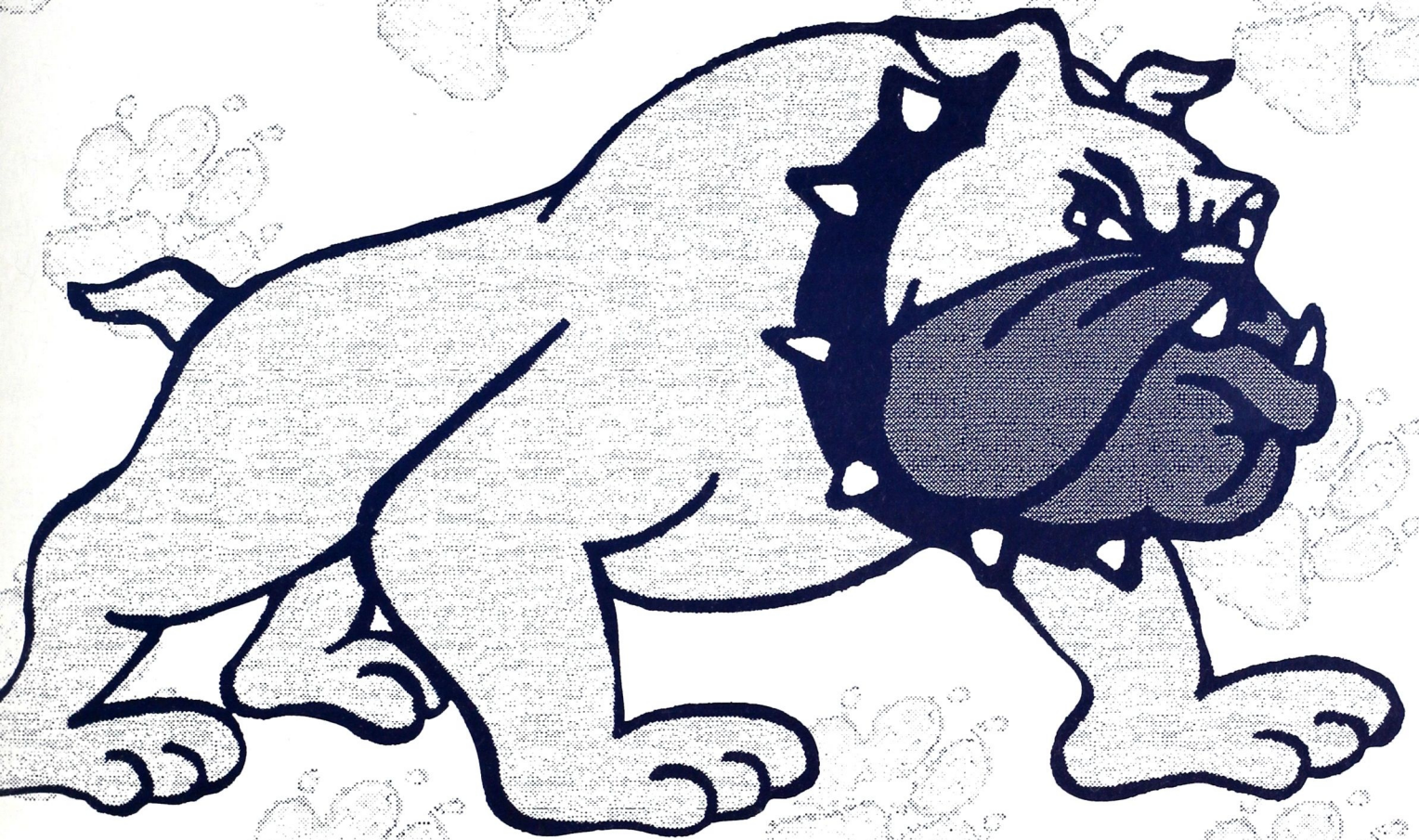
Available at: <https://dc.swosu.edu/echoes/vol81/iss2/1>

This Article is brought to you for free and open access by the Magazines at SWOSU Digital Commons. It has been accepted for inclusion in Echoes from the Hill by an authorized administrator of SWOSU Digital Commons. For more information, please contact [phillip.fitzsimmons@swosu.edu](mailto:phillip.fitzsimmons@swosu.edu).

# ECHOES FROM THE

Vol. 81. No. 2  
Southwestern Oklahoma State University  
Fall 1999

# HILL



**"Ready To Run With  
The Big Dawgs"**





## *From the desk of the President...*

Dear Alumni and Friends:

As I begin serving my tenth year as president, this year will be more important than most, because we will be preparing for two major events that will impact the future of Southwestern. In the fall of 2000, we will have a comprehensive accreditation visit with the North Central Association of Colleges and Schools; and in the spring of 2001, we will celebrate the history of Southwestern's first 100 years.

The NCA accreditation is vital to our continued success. Our campus steering committee is preparing the required self-study report. A team of professionals from across the country will conduct a campus visit and will evaluate our mission and goals; the use of resources; the level of student academic achievement; planning capabilities' and demonstrated integrity. In lay terms, the team will measure our efforts since the last visit in 1990. The members will identify strengths and weaknesses, make recommendations for improvement, and establish the number of years until the next comprehensive visit.

A committee composed of students, faculty, staff, and alumni will be formed this fall to develop plans to recognize our centennial year. This will be an exciting time! The territorial legislature took action in 1901 establishing a normal school whose purpose was to prepare teachers. The legislature appropriated \$52,000 for constructing and equipping a building. The school term officially opened on September 15, 1903. There were 113 students enrolled the first day; while the total for the year was 356. By the end of the fall semester, the student body represented 18 Oklahoma counties and five states. The average age of the students was 19.6 years.

Southwestern is the past, the present, and the future. You are part of Southwestern's success. Stay in touch!

Sincerely,

*Joe Anna Miller*



## Southwestern Alumni Officers

Johnny Beech	President
Don Weeks	Out-Going-President
Richard Hasley	President-Elect
Cheryl Lockstone	Secretary
Linda Redinger	Treasurer
Charles Torbeck	Parliamentarian
Jim Waites	Director

## Board of Directors

Dr. E. Vann Greer Andrews
Teed Bishop
Todd Boyd
Blant Brown
Todd Bryant
Paul Conner
Kevin Donelson
Lori L. Scott Dreiling
Don Elliott
Patrick Fitzgerald
Mike Freeman
Linda Kay Jones
Doug Kapka
Jerry Kinzer
Larry Knisley
Mike Leu
Jim Litsch
Cindy Moore
Dr. Melani Mouse
Mike Muncy
Mike North
Ron Oldfield
Edd Painter
Peggy Prock
Otis Sanders, Jr.
Alan Spies
Rouben Tourian
Basil Weatherly
Jana Mumford Welch
Zack Widener
Kurt Winden
Harold Wright

## Ex-officio Members

Dr. Joe Anna Hibler
Lucille North
Don Roberts

# Inside

## ...Special interest

### 2 SWOSU Distinguished Alumni

*Three Alumni to receive awards at Homecoming*

### 4 Athletes to be Honored at Banquet

*Two basketball greats & a football standout to be inducted*

## ...The Normal Vol. 3 No. 1

*The Normal is offered twice each semester to promote an interest in the historical development of Southwestern with special emphasis on the early years when it functioned as a normal school.*

## ...Foundation Newsletter

### SWOSU Receives \$750,000

*Cordell woman makes largest single donation in history of Southwestern*

### Donors go to the Races

*President's Day at the Races draws a crowd*

## ECHOES from the Hill

Editor.....	Kari Wilkerson
Alumni Director.....	Jim Waites
Public Information Director.....	Brian Adler

*Echoes from the Hill* is published semiannually by the Southwestern Oklahoma State University Office of Development and Alumni. This publication, printed by the University Press, is issued by Southwestern Oklahoma State University as authorized by Dr. Joe Anna Hibler, President. A total of 20,000 copies have been prepared for distribution at a cost to the taxpayers of the State of Oklahoma of \$20,000. Third class postage is paid at Weatherford, OK., 73096 under permit 57. Change of address notices and other correspondence should be sent to Office of Development and Alumni, Southwestern Oklahoma State University, 100 Campus Dr., Weatherford, OK., 73096.

This institution, in compliance with Title VI of the Civil Rights Act of 1964, Executive Order 11246 as amended, Title IX of the Education Amendment of 1972, and other federal laws and regulations does not discriminate on the basis of race, color, national origin, sex, age, religion, handicap, or status as a veteran in any of its policies, practices or procedures. This includes, but is not limited to admissions, employment, financial aid and educational services.



# SWOSU TO HONOR THREE DISTINGUISHED ALUMNI

Southwestern Oklahoma State University will induct three of its alumni into the university's Distinguished Alumni Hall of Fame during 1999 homecoming activities Oct. 1-2 on the Weatherford campus.

Honorees include Jim W. Mogg, 1971 graduate of Denver, Colo; Carolyn Sights Buckenmaier, 1963 graduate of Fairfax Station, Va.; and Donald L. Weeks, 1978 graduate of London, England.

The trio will be honored at the

Oct. 2 Alumni and Friends Luncheon at 11:30 a.m. in the Student Union Ballroom and at halftime of the 2 p.m. SWOSU football contest. Tickets for the luncheon can be reserved by calling the SWOSU Alumni Office at (580) 774-3267.

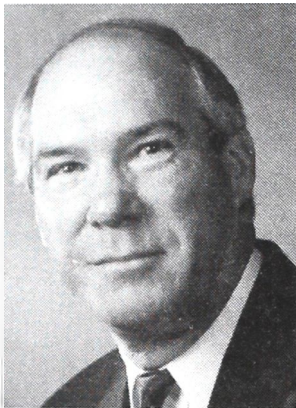
JIM W. MOGG is president and chief executive officer of Duke Energy Field Services, Inc., the natural gas gathering, processing, storage and intrastate pipeline subsidiary of Duke Energy Corporation. Mogg was named to his current position in 1994 and has directed the Denver-based company during a period of substantial growth.

Mogg earned his bachelor's degree at SWOSU in mathematics. He is a 1967 graduate of Hydro (OK) High School. He and his wife, Freda, have two daughters, Amy and Sarah.

Mogg leads Duke Energy Field Services, which is the nation's largest natural gas liquids producer as well as one of the largest gatherers of natural gas and marketers of natural gas liquids.

Its operations include ownership in 66 processing plants of which 52 plants are company operated. Duke Energy Field Services employs approximately 1,600 employees.

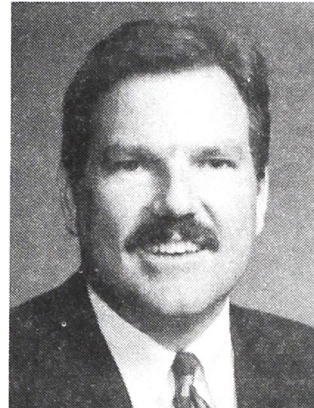
He joined the Duke Energy company in 1973 in the gas supply depart-



Jim W. Mogg



Carolyn Buckenmaier



Donald L. Weeks

ment of Panhandle Eastern Pipe Line Company in Liberal, Kan. Mogg was promoted several times in the company and was elected senior vice president of Panhandle Eastern in 1991 with responsibilities for marketing, regulatory affairs and gas supply. He became president of Centana Energy Corporation in 1992 before taking his current position.

Mogg is a member of the Society of Petroleum Engineers and past president of the Gas Processors Association. He serves on the board of directors of TEPPCO Partners, L.P., which operates one of the nation's largest refined petroleum products and liquified petroleum gases pipeline systems. Mogg has completed the Advanced Management Program at Harvard University's Graduate School of Business.

CAROLYN SIGHTS BUCKENMAIER is a long-time educator who has sought throughout her career to mentor others in the field of educational leadership. She recently completed a 21-year career with the

Fairfax County Public Schools in Virginia and has embarked on a new career in the neighboring Alexandria City Public Schools.

Buckenmaier earned her bachelor of science degree in elementary education at SWOSU. She earned her master's degree from Midwestern State University in Texas and doctorate from Vanderbilt University. She and her husband, Chet, have two sons, C.C. "Trip" and Erich, and four grandchildren.

Buckenmaier retired in 1997 as director of elementary programs at Fairfax. She directed the school-based planning and evaluation process for 45 elementary schools with approximately 25,000 ethnically, culturally and economically diverse students. During her 21-year stint at Fairfax, she also served as a teacher, assistant principal, principal and coordinator of K-12 instruction.

At Alexandria, Buckenmaier is charged with revitalizing the city's middle schools. Like many school districts across the nation, Alexandria officials are concerned with the students' poor academic performances. Buckenmaier initiated a team composed of principals, teachers and leaders from each central office department to compose a document, *The Middle School Blueprint for Excellence*. As a result, the middle schools are receiving increased attention and support.

*continued on page 3*



*continued from page 2*

She has also started several other projects at Alexandria, including a peercoaches (teacher trainers) program to help with staff development and an alternative in-school placement program for selected youngsters who have hard times functioning in a regular classroom setting. A personal goal throughout her career has been mentoring others in educational leadership. She recognizes the well-developed skills many retirees have and encourages them to return to part-time positions to allow schools to take advantage of the retirees' skills as work continues to improve public education.

DONALD L. WEEKS currently serves as Arthur Andersen's partner-in-charge of the U.S. Professional Standards Group for Europe, Middle East, India and Africa (EMEIA). He serves as the expert partner for over 100 large, multi-national companies listed on the U.S. stock exchanges.

Weeks holds two degrees from Southwestern. He earned a bachelor of science degree in management in 1978 and then completed a master

of business administration degree in 1980.

Weeks has been very involved with Southwestern activities. He is past president of the alumni association (1996-98) and currently serves on the SWOSU Foundation Board of Directors. He was the 1995 recipient of the Southwestern Presidential Services Award and served as Southwestern's representative on the Oklahoma Higher Education Alumni Council from 1995 until his departure for London in 1997.

During his undergraduate years at SWOSU, Weeks played on the golf team. He was named to the all-district team in 1977 and 1978. In 1979-80, he secured the first graduate assistant position with the SWOSU School of Business. After completing his MBA with an emphasis in accounting, Weeks became instructor of accounting in 1980. He left SWOSU in 1982 to join Arthur Andersen in Oklahoma City.

Prior to accepting his current position, Weeks was a partner in the Oklahoma City office of Arthur Andersen. His current job in London entails con-

sulting with the top global 1,000 clients around the world on complex transactions and issues. He has assisted EMEIA companies with billion dollar SEC filings and has dealt with numerous underwriters and attorneys. Representative clients include Cable & Wireless (UK) Communications, OTE (Greece), TOTAL (France), Cadbury Schweppes (UK), Stolt (UK), Telenor (Norway) and Alcatel (France).

Weeks is also co-owner of Dupell-Ramos Designs and its sister company, Dupell-Ramos Terra Guard, which manufacture concrete and fiberglass products, sprinkler systems and waterfalls and produce concrete and terracotta sealant under the brand name, Terra Guard.

While in Oklahoma City, Weeks was very involved in civic affairs. He was a member of the Leadership Oklahoma City Class of XV, president of the Oklahoma chapter of the Arthritis Foundation from 1994-96, treasurer of Oklahoma City Beautiful from 1990-92, president of Big Brothers/Big Sisters in 1991-93, and president of the Oklahoma Golf Association from 1995-97.

## DIVISION OF NURSING CELEBRATES 20TH ANNIVERSARY



*Southwestern Oklahoma State University's Division of Nursing recently celebrated the 20<sup>th</sup> anniversary of the first SWOSU graduating class of nurses. Around 120 people attended a dinner celebration on the Weatherford campus. (Photo #1) Representatives of the 1979 class who attended were (from left): Elaine Lamb of Yukon, Lorraine Buller of Hydro, Elizabeth Bearfoot of Fairview and Connie Kubeck of Jones. (Photo #2) Visiting before the dinner are Kay Coltharp of Weatherford and Pam Thomas Joseph of Choctaw.*



# SWOSU WILL INDUCT THREE TO ATHLETIC HALL OF FAME

Southwestern Oklahoma State University's 1999 homecoming on Oct. 1-2 will feature the newest class of inductees into the SWOSU Athletic Hall of Fame. Two basketball greats, Anita Foster (1982-84) and Jim Litsch (1952-56), and a football standout, Charles Hicks (1970-73) will be inducted at the SWOSU Athletic Hall of Fame Banquet on Friday, Oct. 1 at 6:30 p.m. in the Student Union Ballroom.

Tickets for the event are \$10 and available by calling the S W O S U Alumni and Development Office at (580) 774-3267.

The trio joins 44 athletes who have been inducted in the SWOSU Athletic Hall of Fame.

**Anita Foster** was a member of two national championship teams at Southwestern and earned NAIA first-team All-American honors in 1984. She was also an honorable mention All-American in 1983.

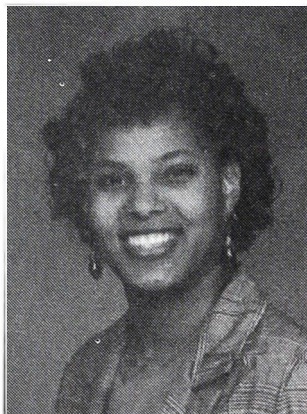
During her three-year career with the Lady Bulldogs, Southwestern recorded 95 wins with only five losses. Her freshman season ended with an undefeated record, going 34-0.

Foster holds the Lady Bulldogs record for most blocked shots in a season, collecting 73 in 1984. She is tied for second place in the game category for blocked shots, swatting seven against Mary Hardin-Baylor in 1984. In her career at SWOSU, Foster recorded 1,208 points (14.2 ppg) and 526 rebounds (6.2 rpg).

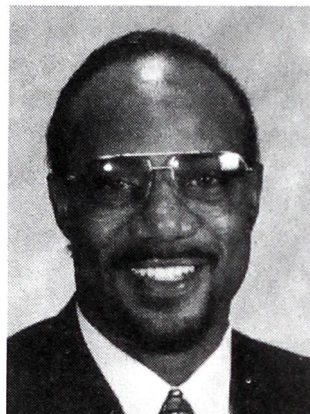
Foster has two children, Tyrone Wilson, 20 and Avanti Reed, 10.

**Charles Hicks** is Southwestern's

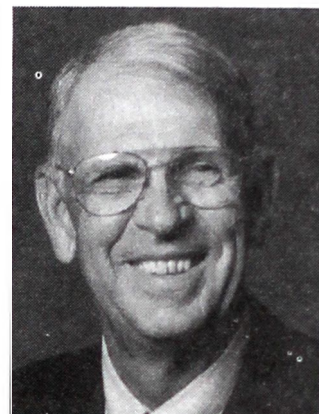
all-time rushing leader with 4,233 yards in his career. He also holds the record for most yards in a season with 1,511 (1971) and in a game with 294 (vs. Eastern New Mexico, 1970). Overall, Hicks is listed in over 10 different statistical categories in the SWOSU record books. His brother James is also featured



Anita Foster



Charles Hicks



Jim Litsch

throughout the rushing records.

After his playing years at Southwestern, Hicks competed on three different professional teams. He was a member of the Green Bay Packers in 1972. A year later, he competed for the Winnipeg Blue Bombers in the Canadian Football League. His final experience at the professional level came in 1975 when he played for the Houston Oilers.

Hicks then hung up his cleats and started his coaching career. His first coaching opportunity came at Corsicana(TX) High School, working under Bill Froman.

He made another attempt at playing with the Wichita Falls(TX) Steelers, a semiprofessional team, from 1976-78. He took on the role as player/coach with the Steelers during those two years.

While he was competing, he was also coaching track and football while teaching at Hirschi(TX) High School for 10 years. In 1986, Hicks took the

opportunity to go home by accepting a coaching/teaching position at Burkburnett High School in Burkburnett, Texas. Ten years later, he accepted the head position at Burkburnett.

In his second year as head coach, Hicks led Burkburnett to the playoffs for the first time in four years. Last season, he missed the playoffs by a coin toss decision.

He and his wife, the former Delores Calhoun, reside in Wichita Falls, Texas. They have three children, Tonja Banks of Fort Worth, Texas, Ryan Hicks of

Wichita Falls, Texas and Brian "Skip" Hicks who played football at UCLA and currently competes for the Washington Redskins. They also have one grandson, Kedron Banks.

**Jim Litsch** holds the school record for best field goal percentage in a season, hitting 64.0 percent from the field in 1956. He earned first-team all-conference honors during his junior year and captained the squad during his senior year, receiving second-team all-conference honors.

The Bulldogs won the Oklahoma Collegiate Conference championship and appeared in the NAIA National Tournament during Litsch's freshman year. He was named to the all-tournament team when Southwestern won the Sunshine Tournament during his sophomore season. He was also ranked fourth nationally in field goal percentage as a sophomore, hitting 52.7 percent.

Litsch spent 34 years in the field of education. He taught and coached at

*continued on page 5*



## How the Bulldog got His Face

When the Good Lord gave out faces to  
the dogs long ago,  
He found, when he had issued them there  
was still one more to go-  
"Where's this dog's face?" He called  
aloud, "I know I must have made it.  
There must be someone hereabouts  
who's clumsily mislaid it."  
A shy young angel then stepped up,  
"Forgive me Lord", he said.  
He stuttered and he stammered and he  
turned a little red-  
"I never thought it was a face-it fell out  
of your bag.  
So I thought you had discarded it as just a  
piece of rag.  
So I promptly went and used it for so  
very many things,  
Like polishing up halos and waxing up  
the wings.  
It's creased and crumpled as you see-in  
truth it's a disgrace.

I don't know how my dearest Lord, you  
can use it for a face.  
I realize it's all my fault, and there's no  
one else to blame.  
I trust you can forgive Lord, my heart's  
so full of shame."  
"Of course I have forgiven you, but here  
we've got a mess.  
So I'll make amends to this poor dog and  
him I'll truly bless.  
He'll be called an "English Bulldog"  
that's about the only place,  
where the people are so silly as to love  
an ugly face.  
But he'll be kind and gentile and of  
courage he'll be full-  
as well as love and loyalty-the ugly,  
lovely Bull."  
And that is how, my children, in that  
long-gone year of grace,  
the dear old English Bulldog got his  
lovely, ugly face.

By A.N. K. Hobbs

Reprinted with permission from The Australian British Bulldog Clubs International Page at <http://www.flex.com.au/~buldawg>

*continued from page 4*

Fay(OK) High School from 1956-68. His girls' basketball team reached the state tournament in 1958.

In 1968, he became the principal of Fay Grade School, holding the position until 1974. He then served as principal at Thomas(OK) High School until 1990 when he retired.

Litsch remains active in playing basketball, competing in the Senior Olympics' three-on-three competition. He currently farms and raises cattle and enjoys playing with his two grandsons, Luke who is four and Trent, a newborn.

Litsch is married to the former Peggy Cook, a SWOSU graduate and resides in Fay. The couple has two daughters, Kelli and Staci. Kelli is Southwestern's assistant athletic director and a former SWOSU women's basketball standout. Staci is married to Jeff Lewallen and resides in Elk City.

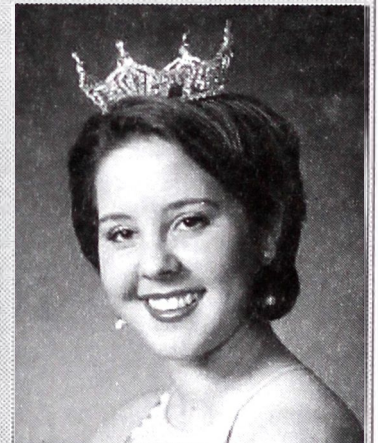
## MISS SOUTHWESTERN

Southwestern Oklahoma State University's annual Miss Southwestern Scholarship Pageant will be held Saturday, Oct. 30, on the Weatherford campus.

The pageant is an affiliate of the Miss Oklahoma/Miss America Scholarship Pageant system.

Kara King, an Altus (OK) senior majoring in vocal music education, will give up her crown as Miss Southwestern. King was one of five current or former Southwestern students who competed at the 1999 Miss Oklahoma Pageant. King won a talent award at the pageant, while Ann Marie Perkins of Nashoba was a top 10 finalist.

Southwestern has been hosting the annual Miss Southwestern Scholarship Pageant since 1958 when Carol Cates Brown, now of Weatherford, won the title.



Kara King



# SWOSU HOMECOMING

1

## Friday, October 1

Homecoming assembly & queen coronation

Fine Arts Auditorium 11 a.m.

Y Chapel open house

East of Student Center 1-5 p.m.

Athletic Hall of Fame Banquet

Student Center Ballroom 6:30 p.m.

## Saturday, October 2

Alumni registration

Student Union Lobby 9-11 a.m.

Parade watch parties

Downtown 9:30 a.m.

Parade

Downtown 10 a.m.

BSU brunch and open house

BSU Center 11 a.m.

Phi Beta Lambda alumni reception

Stafford Building room 322 11:00-1:00 a.m.

Alumni and Friends Luncheon

Student Center Ballroom 11:30 a.m.

School of Pharmacy open house

Pharmacy Building third floor 11:30 a.m.-1 p.m.

Band directors and music alumni complimentary luncheon

Fine Arts Building, 102 12 noon

Football game  
SWOSU vs Ouachita Baptist AR  
halftime activities and  
Distinguished Alumni presentations

Milam Stadium 2 p.m.

SWOSU All-Sports Reunion

Rankin Williams Fieldhouse Gymnasium Following the Game

BSU banquet

First Baptist Church Fellowship Hall 5:30 p.m.

All Greek gathering

T-Bone Steak House Following game

## Sunday, October 3

Pharmacy Continuing Education

Conference Center 8 a.m.-5 p.m.

9

9

9

# Running with the Big Dawgs



# WATCH THE PARADE WITH OTHER ALUMNI

## *Parade Watch Party Locations*

**Benchwarmer Brown's:** All-Sports reunion

**Butcher's Clothing Co.:** Beta Tau Beta, Tri J's and Phi Kappa Alpha

**Java's:** Art department and Music department

**Delicious Designs:** School of Education and Math department

**Edward Jones:** School of Business, Phi Beta Lambda, Marketing/Management Club, Alpha Kappa Psi, Accounting/Finance and Circle K Club

**Hooked on Books:** Physics department and Computer Science department

**Kelley Jewelers:** School of Pharmacy and Pharmacy fraternities: Kappa Epsilon, Kappa Psi, Phi Delta Chi, Phi Lambda Sigma, Rho Chi, Division of Nursing and Health Information Management

**The Kloset:** Home Economics Alumni, Language Arts department and Canterbury Association

**Dusty Rose:** Kappa Delta Omega and Psychology department

**Nabors Shoe Center:** Baptist Student Union

**New Life Bookstore:** Church of Christ Student Center and Chi Alpha Gamma Delta

**The Pink Turtle:** Chemistry Club, Biology Club and Wesley Foundation

**The Smart Shop:** Gamma Delta Kappa

**Sharon's:** Sigma Sigma Chi, HPER department and Graduate students

**Taufest:** Social Science department and Catholic Student Association

## SWOSU HONORED RETIRING FACULTY

These Southwestern Oklahoma State University faculty members were recently honored at a retirement reception hosted by the SWOSU Faculty Senate on the Weatherford campus. Ten faculty members with a combined 276 years of service to Southwestern were recognized at the event. Among the honorees were (from left): Sara Chapman, social sciences; Dr. Jerry Nye, language arts; Dr. Jana Lou Scott, education; George Atkins, computer science; Dr. Charles Page, business; and Dr. Sam Lackey, language arts. Not pictured are Dr. Jim Kitchens, education; Dr. Don Mitchell, technology; Dr. Allen Badgett, biology; and Ruth Atterberry, Sayre campus.





# ALUMNI GOLFERS MAKE IT THROUGH ELEVEN HOLES

Southwestern Oklahoma State University's annual alumni golf tournament held June 12 in Oklahoma City drew another capacity crowd.

Thirty-four teams with 144 golfers participated in the 6th annual classic held at Silverhorn Golf Course.

Results of the scrambles tourney were based on 11 holes of golf, because heavy rains forced cancellation of the afternoon session.

In the championship flight, the winning team at -13 were Blake Brewer, Elk City; Gerald Buckles and Kerry Carter, both of Edmond; Jody Cunningham, Tulsa; and Mark Russell, Lawton. Second place winners at -11 were Brand Hartsell, Clint Mahanay, Kent Powell and JayWyer, all of Clinton. Third place winners as the result of a scoreboard

playoff at -10 were Jerry Kaufman and Duncan Taylor, both of Weatherford; Ed Robinson, Oklahoma City; Carter Robinson, Hollis; and Alan Spies, Norman.

In the handicap flight, four teams tied at -6. As the result of a scorecard playoff, the winning team consisted of Erwin Duerksen, Corn; James Griffin and Charles Page, both of Weatherford; David Hunter, Edmond; and David Steiner, Oklahoma City. Winning second place were Don Britton, Tony Louthan and Lawane Woody, all of Weatherford; Dallas Corbin, Cordell; and Joel Paden, Clinton. Third-place winners were Michael Chancellor, Stephen Dobson, Eric Smith and Robert Trammell, all of Edmond.

First place teams received \$400, second place teams \$300 and third place \$200.

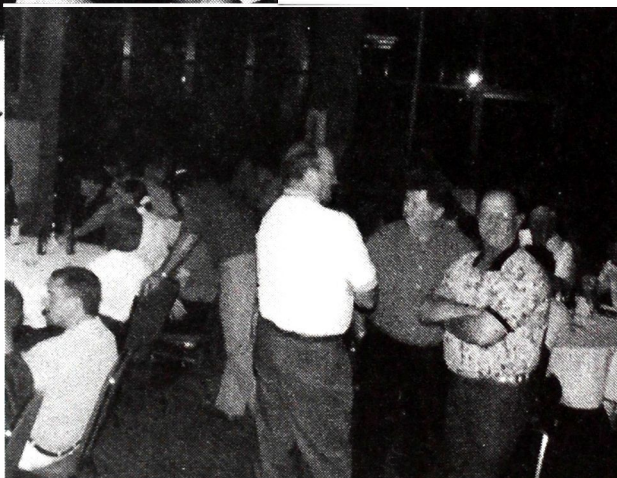
*Below: Cecil Perkins, Craig McMurphy and Patti Perkins join Kendra Church and Kelly Taunton both representing Dobson Communications, at the Alumni mixer the night before the golf tournament.*



*Left: Vic Hodge, Louie Mendoza, Ron Jantzen and Jeff Pierce took time for a little R&R, relaxing and reminiscing.*



*Left: About 80 people were at the golf tournament mixer at the Ramada Plaza in Edmond. A band played until midnight; there were also hors d'oeuvres and a cash bar.*



**Alumni  
Golf  
Tournament  
June 24,  
2000**





# RAIN, RAIN, RAIN GO AWAY!



*Above: 144 golfers are ready to participate in the 6th annual Alumni and Friends Golf Tournament held at Silverhorn Golf Club in Oklahoma City.*

*Below: The winning team in the championship flight included Blake Brewer, Gerald Buckles, Kerry Carter, Jody Cunningham and Mark Russell.*



*Below: Jim Anderson, Peewee Anderson, Jerry and Frankie Jameson take time out to pose for Southwestern's Public Information Director and Photographer, Brian Adler.*

*Above: Dr. Joe Anna Hibler poses with the winners of the handicap flight: Erwin Duerksen, Charles Page, James Griffin, Dr. Hibler, David Steiner and David Hunter.*



*Above: Dean Brown's team takes a break and enjoys some delicious Outback chicken wings. Dean's team included Tara Maples, Mark Lumpkin and Rob Moses (sitting in the cart).*

*Outback had a rough time battling the weather. However, we appreciated all of their hard work and effort. Their workers did an excellent job of serving chicken wings until the rain showed up. Thanks guys!*



# SWOSU ALUMNI CELEBRATE ST. PATRICK'S IN BRICKTOWN!

SWOSU held its second annual Metro Alumni Chapter Meeting at the Bricktown Brewery in Oklahoma City on St. Patrick's Day. There were 46 people who attended. The evening included a buffet dinner, a short meeting and a chance to win door prizes. The best part of the evening was making new friends, visiting old friends and remembering the 'good old days' at Southwestern.

This event is open to anyone in or out of the metro area. We would love to have you come and enjoy the fun atmosphere that Southwestern Alumni have wherever they get together. Be sure to look for your invitation around the first week of March. For more information be sure to call the Alumni office at (580) 774-3267.

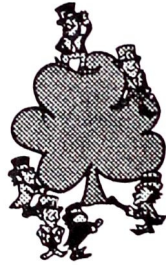


Alumni President Johnny Beech (standing in the center) introducing football coach Paul Sharp, who gave a report on the football program and plans for the next fall.



David and Diane (D.K.) Hunter wear the door prizes they each won. David won a Southwestern cap and D.K. won a cap and Southwestern Alumni sweatshirt.

MAKE PLANS  
TO JOIN US  
MARCH 9, 2000



Jim Waites, Alumni Director, talks to Cecil and Patti Perkins, Cecil is the Athletic Director at SWOSU. Also President Hibler visits with Paul and Sherri Sharp.



(Left to right) Bruce and Linda Grummer visit with Charles Torbeck and Peewee Greer Andrews.





# ALTERNATE PATHWAY TO THE DOCTOR OF PHARMACY DEGREE

Southwestern Oklahoma State University School of Pharmacy at Weatherford and the University of Oklahoma College of Pharmacy in Oklahoma City have initiated a collaborative project that will provide a pathway by which baccalaureate-degreed pharmacists in Oklahoma may obtain the doctor of pharmacy degree.

The project, known as the Alternate Pathway to the Doctor of Pharmacy Degree, will provide an opportunity for pharmacists to enhance their current knowledge, skills and abilities, as well as advance the delivery of pharmaceutical care to the people of Oklahoma.

Furthermore, the pathway allows the participating universities to fulfill educational responsibilities to their graduates and to the pharmacists of Oklahoma.

The project, approved January 29 by the Oklahoma State Regents for Higher Education, is an outgrowth of the development and implementation in 1998 by both pharmacy institutions of programs that provide the Doctor of Pharmacy as the only professional degree program in pharmacy available in Oklahoma.

SWOSU and OU have cooperated to build the collaborative program by consolidating their efforts in admissions, enrollment, tuition, curriculum, teaching methodologies and student assessments.

They have created an opportunity that incorporates educational quality in a convenient format that facilitates achievement by practicing pharmacists of the Doctor

of Pharmacy degree. The program features a focus on the critical knowledge, skills, and competencies as outlined by accreditation standards and guidelines recently adopted by the American Council on Pharmaceutical Education (ACPE).

"The intent of this pathway is to accommodate and serve the needs of the practicing pharmacist in a manageable and rational manner while providing participants an important professional and educational opportunity that will aid the advancement of their practices to future standards," said Dean Carl K. Buckner of the OU College of Pharmacy.

The Alternate Pathway builds upon prior curricular and experiential activities of practicing pharmacists and will involve 32 credit hours of self-paced didactic and experiential activities.

"This unique collaborative project provides practicing pharmacists in Oklahoma with an effective and efficient mechanism to earn the new Pharm.D. degree that meets ACPE and Oklahoma State Regents for Higher Education guidelines," said Dean H. David Bergman of the SWOSU School of Pharmacy. "This specialized enriched professional program will be conducted without additional personnel or financial resources and will benefit the citizens of Oklahoma."

The program is competency-based and designed to be completed over a period of one to four years utilizing a variety of distance education techniques and technologies. The anticipated start of the pathway will be Fall, 1999.

## SOUTHWESTERN MEN'S RODEO TEAM WINS NATIONALS

The SWOSU men's rodeo team never stood among the leaders throughout the majority of the week, as they were competing at the College National Finals Rodeo in Casper, Wyoming. On Saturday, June 19, their position changed in a major way as they rode to victory, gaining the program's fourth national title. Head Coach Don Mitchell gained Coach of the Year honors while leading the men's team in the come-from-behind performance.

The Bulldogs benefited from Davey Shields, a junior from Alberta, Canada and Clark Dees, a senior from DeRidder, Louisiana, as they finished first and second, respectively, in the

final round of the bareback competition. Overall, Shields finished second (299.3 points) while Dees claimed third place (292 points).

Corey Navarre, a senior from Sulphur, Louisiana, gained ground in the bull riding competition with his first-place finish in the final round. He finished with an overall second place ranking (225 points).

Along with Daniel Adams, a sophomore from Butler, Oklahoma, fourth place overall finish in steer wrestling and Jeremy Hennigh, a junior from Sayre, Oklahoma, ranking seventh overall in calf roping, Southwestern collected 810 points.

Blue Mountain Community College placed second with 672.5 points.

The SWOSU women took an opposite turn as they led the competition for most of the week but ended in fourth place. Mitchell stated the women's competition was the toughest he has seen at the national rodeo.

Mary Ann Barrow, a sophomore from DeQuincy, Louisiana, placed second in the all-around rankings with 355 total points. She ranked second overall in goat tying and eighth in breakaway roping. Jennifer Smith of Tarleton State, TX finished ahead of Barrow with an all-around total of 380 points.



# THREE SWOSU WOMEN'S BASKETBALL PLAYERS NAMED TO ALL-CENTURY TEAMS

Three Southwestern Oklahoma State University basketball players were honored on the recent *Daily Oklahoman* Oklahoma All-Century Women's College Basketball Teams.

Kelli Litsch, Lisa McMullen and Rhonda Smith were named to the first second and fourth teams, respectively.

Litsch made the first team for both the college and high school teams. The 1985 SWOSU graduate led the Lady Bulldogs to three national championship titles in 1982, 1983 and 1985. The four-time All-American averaged 20.8 points and 9.3 rebounds during her four-year career at SWOSU. Litsch, who is now assistant athletics director at SWOSU, also led Thomas High School to two state championship titles.

McMullen was named by SWOSU women's basketball coach John Loftin as the second-best player in Southwestern history (Litsch is the top one). McMullen was a lightning-quick point guard who averaged 22.6 points during the 1994-95 season. She holds a school record with 94 three-point shots made during that same season. The Lady Bulldogs finished 30-5 and advanced to the Final Four.

Smith led Southwestern to the 1987 national championship title and a 30-2 overall record. The Lady Bulldogs won 21 straight games at the end of the season and defeated North Georgia, 60-58, in the championship game. Smith was a powerful player who was also named to the first-team All-American list.

## 'BRANDY' SURVIVES TORNADO



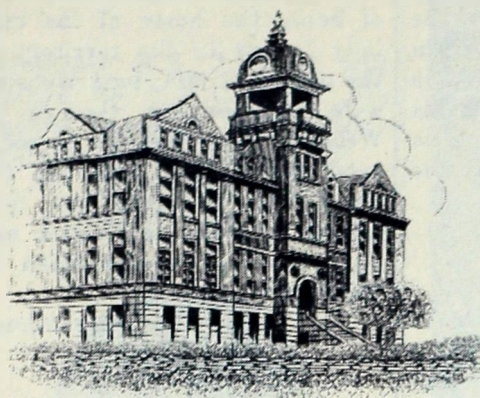
As many people know, a powerful tornado ripped through the Oklahoma City area on May 3, 1999. Several SWOSU alumni were affected by the tragedy. Reggy and Sunny Scott, 1990 and 1991 graduates, respectively, lost their home and many belongings. As they were searching through the debris, Reggy noticed on the fireplace mantle that their "Brandy" Bulldog had been amazingly untouched during the storm and remained in place even though everything else surrounding it had been destroyed. The Scotts couldn't smile at the time but now gladly tell the story of amazing "Brandy".

*Above: Reggy Scott shows how he found "Brandy" still sitting untouched on the fireplace mantle. Reggy and "Brandy" are surrounded by what was left of Reggy and Sunny's home.*

*Right: The Scotts provided us with this picture of what was left of their home after the tornado turned a vehicle upside down and threw it into and on top of their home.*







# The Normal

Southwestern Oklahoma Territorial  
Normal School  
(1903-1907)

Weatherford, O.T.

Vol 3 No 1

Fall 1999

## First Summer Term Begins June 6, 1904

"The first year of the Southwestern Territorial Normal has passed into history. The success of the first year's work was not anticipated by the most hopeful. The school takes no back seat for any of the Normal schools in the territory and in the states." (1) The enrollment totals are as follows (2):

Fall Term	193
Winter Term	219
Spring Term	275

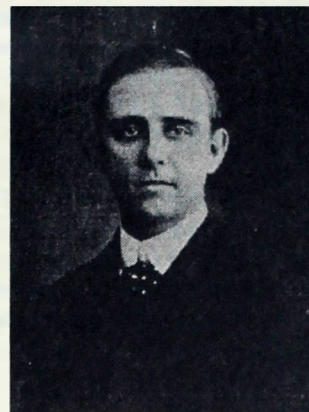
President James R. Campbell announced that the Southwestern Normal's first six-week summer term will offer the following choices:

1. Normal Institute course of study taught by nine regular members of the faculty. "An examination will be held at the end of four weeks and teachers' certificates will be issued by the county superintendent of county in which the applicant is to teach." (3)
2. "A regular review course in which students will be allowed to review any branch they desire." (4)
3. "Students may select any two

branches and by doing double work receive credit for one full-term's work in the regular course." (5)

Faculty who will not be teaching during the summer term include Robert N. Linville (Chair, Department of History and Civics) who will conduct a Normal Institute in El Reno. (6) Also, Guy W. Bohannan (Chair, Department of Science) will conduct a teacher's institute in Comanche County and Mary P. Rice (Assistant, Department of English) will assist the Custer County Teachers' Institute in Arapaho. (7,8)

There were two resignations from the Southwestern Normal charter faculty accepted by the Territorial Board of Regents for Normal Schools. (9) Thomas Bell Kendrick, who taught classes in Latin, Greek, and German, stated that the ". . . reason for my resignation is that I do not think that one hundred and twenty dollars per month is a sufficient compensation for living here in this fearfully stormy and sandy country, since I can get the same salary in my old position at Dallas, Texas." (10,11) Professor Kendrick, a graduate of the University of Chicago, taught at the high school in Dallas prior to



Austin Elgin Wilber, First Vice-President, Southwestern Normal (1906 Oracle, SWN Yearbook)

his appointment at Southwestern. (12,13) He was not replaced as his classes in Latin and German were transferred to Miss Paine (Assistant, Department of English) and his Greek class was assigned to Professor Linville. (14)

Professor Alvin Whitehead Roper, Chair of the Department of Instrumental Music (Piano), was the only member of the faculty who did not receive a raise for the 1904-05 academic year. (15) His resignation, dated June 1, 1904, was handwritten on Weatherford Park Hotel stationery. (16) Professor Roper

(continued on page 3)



# The Normal

Fall 1999 ISSN 1094-6497

J. A. Hibler, Publisher

M. A. Kerley, Editor

Telephone 28

*The Normal* is offered each semester to promote an interest in the historical development of Southwestern with special emphasis on the early years when the institution functioned as a normal school. *The Normal* was printed by the University Press and was issued by Southwestern Oklahoma State University as authorized by Dr. Joe Anna Hibler, President of the University.

Supported by a SWOSU Office of Sponsored Programs Grant.

Copyright 1999, Michael A. Kerley

## Town Items

"About ten or twelve of our citizens were caught Monday with their hydrants running after the fire alarm was turned on. If you don't want to pay a fine of \$25.00 you had better shut off your water until the whistle gives notice that the fire is under control."

*Custer County Republican*  
March 31, 1904

"Earl Limbocker, the man who made the balloon ascension at Clinton last year, made an ascension at Arkansas City last week but fell into the Arkansas River and was drowned."

*Custer County Republican*  
June 9, 1904

"Robert Everts of Oklahoma City was in the city three days of the past week instructing O.B. Kee in the management of his automobile. Kee is initiating his automobile by taking the girls and good-looking ladies of this town riding."

*Custer County Republican*  
May 5, 1904

"Among our town people we hear considerable complaints with regard to loose stock on our streets, and that much damage is done to young trees and shrubbery growing along the walks of the city. Much of these complaints originate from the town herd passing along the streets. The cows are allowed to trample the walks, eat and break down the young trees growing along the walks, and again from stock getting loose nights and doing much damage. Laws are made to protect property and they should be rigidly enforced.

. . . If we mistake not, we have an ordinance compelling our people to plant trees along the streets in front of their residences; and this being the case, they should receive all the protection possible against the running-at-large of stock. . . ."

*Custer County Republican*  
May 19, 1904

"I. Boucher, living five miles north, has tackled irrigation as an experiment. He has established a gasoline engine on his place with which to pump water and will irrigate a twenty acre patch, fifteen of which is in potatoes."

*Custer County Republican*  
July 28, 1904

"It is stated that on April 1st the Choctaw, Oklahoma, and Gulf Railroad will be completely absorbed by the Rock Island System."

*Custer County Republican*  
March 17, 1904

"Weatherford has the distinction of being the home of the only lady lawyer in the territory in the person of Mrs. Ione Webster, wife of Senator George T. Webster. Mrs. Webster passed a good examination and has the distinction of being the first woman to make application and pass the bar examination in Oklahoma."

*Custer County Republican*  
June 16, 1904

"Some of the citizens of Arapaho are advocating the establishment of a county high school at that place. Why in the name of reason do they want a high school there with the Southwestern Normal School here?"

*Custer County Republican*  
June 2, 1904

"Custer City businessmen are arranging to have their post office name of Graves changed to Custer and Custer in Beaver County will adopt . . ." the name of Madison.

*Custer County Republican*  
March 10, 1904

*Custer County Republican*  
July 14, 1904

"Notwithstanding the fact that a genuine fire alarm from the pumping station given for the benefit of the practicing fireman has been repeatedly condemned, the same thing occurred Monday evening, much to the disgust of our citizens who turned out enmasse to help fight the supposed fire. Such practice won't do and they had better cut it out."

*Custer County Republican*  
July 28, 1904



## Normal Notes

"Professor R.N. Linville will lecture to Y.M.C.A. at the Normal assembly hall Sunday afternoon at 3 o'clock."

*Weatherford Democrat*  
May 19, 1904



Alvin Whitehead Roper  
(1906 Oracle, SWN Yearbook)

"Professor Roper came in from Mountain View on his bicycle Tuesday of last week and left last Tuesday for Mangum."

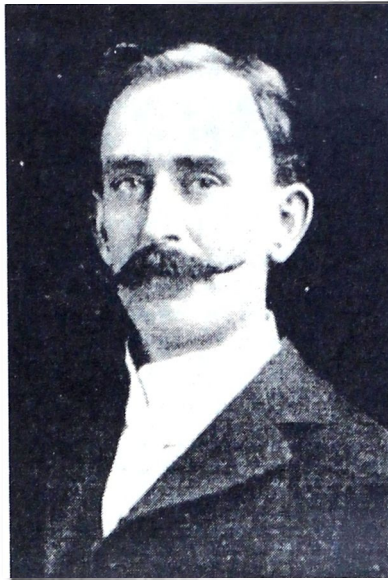
*Custer County Republican*  
June 23, 1904

"Last Friday evening President and Mrs. Campbell gave a reception to members of the faculty, Normal students, and a few towns people. Professor Roper. . . gave some fine musical selections in the reception room . . ."

*Custer County Republican*  
June 23, 1904

Hugh Webster (first student to enroll in the Southwestern Normal), son of George T. Webster, will leave Tuesday for the St. Louis World's Fair and Chicago. He will make the three week trip alone. He is paying his own way with earnings from chores.

*Custer County Republican*  
June 30, 1904



Thomas Bell Kendrick  
(1906 Oracle, SWN Yearbook)

"Professor R.N. Linville was brought in on the train from El Reno last Tuesday and is now lying at his home very sick with typhoid fever. His wife has been telegraphed for and is expected today. Professor has been conducting the institute in El Reno and Mrs. Linville is visiting relatives in Missouri"

*Custer County Republican*  
June 30, 1904

"Professor and Mrs. Campbell left Sunday for a six-weeks course of study at the Chicago University."

*Custer County Republican*  
July 21, 1904

"Professor and Mrs. Wilber gave a reception last Tuesday evening to the Normal faculty and students."

*Custer County Republican*  
July 21, 1904

## Summer Term

(continued from page 1)

was replaced with the appointment of Bessie Lillian Boles, a 1901 graduate of the Ladies Liberty College, Liberty, Missouri. (17) Miss Boles, daughter of Judge J.J. Boles of Guthrie, had also studied at the Conservatory of Music, St. Louis, Missouri. (18)

During the first year, classes in drawing were offered by Professor Wilber through the Department of Education. (19) The demand for such classes was such that Professor Wilber was able to convince President Campbell that a Department of Art should be established. (20) Accordingly, Mary Emma Tuttle, an instructor in the Cape Girardeau (Missouri) Normal School, was hired as Chair of the newly created department beginning with the 1904-05 academic year at a salary of \$72.00 per month. (21) Miss Tuttle received a life teaching certificate from the Michigan State Normal College, Ypsilanti, in 1900. She had also studied at the Chicago Art Institute. (22) She was the sister of Mrs. Austin Wilber. (23)

This appointment in art allowed release time for Professor Wilber's additional duties as the first vice-president of the Southwestern Normal. Professor Wilber's new assignment was approved by the Board of Regents at their July meeting in Guthrie. (24, 25)

One area of concern regarding course offerings during the first year involved an unexpected high enrollment in math classes. This pattern is reflected in the following faculty load assignments for lecture classes (26):

(continued on page 4)



## Boarding Houses Wanted

"The city is badly in need of boarding houses, especially for Normal students. There are not many such in town and now is the time to arrange for them before the rush September 1st.

Professor Wilber informs us that there will be at least 500 students enrolled here this fall and that means at least 400 boarders. There will probably be more and now is the time to prepare for them."

*Custer County Republican*  
July 28, 1904

## Home for Sale

"A new elegant five room cottage for sale at a big bargain. Two lots, soft water well, city water, young fruit trees. Would make splendid investment for rental property. Must sell at once. T.B. Kendrick."

*Custer County Republican*  
June 30, 1904

## Summer Term

(continued from page 3)

Mr. Ferrell (Math)	9
Mr. Linville (History)	7
Mr. Bohannan (Science)	6
Miss Paine (English)	6
Mr. Kendrick (Language)	6
Mr. Greenfield (English)	5
Mr. Wilber (Education)	5
Miss Seevers (Elocution)	5
Miss Rice (English)	5
Miss King (Business)	1
Mr. Bone (Math)	1

Professor Ferrell's teaching load was slightly improved with the assistance of a full-time student, Berlin Bertlett Bone, who had prior teaching experience and was talented in the subject.

Mr. Bone taught one math class for no pay. He was recommended for the position of Assistant in the Math Department at \$40.00 per month for the 1904-05 academic year. (27) The Board of Regents approved his appointment but at a salary of \$25.00 per month. (28) Mr. Bone listed his claim near Arapaho (Custer County, O.T.) as his home. (29) He is believed to be the first teacher and principal in the Arapaho Public Schools. (30) During his last year at Arapaho (1902-03), he presented a paper entitled "Teaching of History" before the Custer County Teacher's Institute. (31) He finally proved up his claim in 1906. (32)

With these new appointments and class assignment changes, the Southwestern Normal faculty faced an anticipated further increase in enrollment for the second year of classes with essentially the same faculty numbers offered the first year. (33)

"People are realizing that an education is a necessity and not a luxury. The girls and boys without a good practical education are handicapped now days and this fact is what is filling the schools fuller every year." (34)

## References

1. Custer County Republican (newspaper, Weatherford, Oklahoma) Jun 9, 1904
2. 1903-04 Third Quarterly Report, April 6, 1904, Board of Education Papers for Southwestern Normal School A68 Folder Series 20 - Quarterly Reports, The Oklahoma Collection, Library, University of Central Oklahoma, Edmond
3. Supplement to the Custer County Republican, May 26, 1904
4. Ibid
5. Ibid
6. Custer County Republican, Jun 9, 1904
7. Custer County Republican, Jun 2, 1904
8. Custer County Republican, May 26, 1904
9. Minutes, Oklahoma Territorial Normal Schools Board of Regents, June 3 and July 5, 1904 meetings, Journals 14-15, Record Group 18, Series 43, Archives and

- Records Department, Oklahoma State Department of Libraries, Oklahoma City
10. 1904-05 Second Quarterly Report, January 5, 1905, Board of Education Papers for Southwestern Normal School A68 Folder Series 20 - Quarterly Reports
  11. T.B. Kendrick Resignation Letter, Board of Education papers for Southwestern Normal School A68 Folder Series 22 - Resignation Letters
  12. A.E. Wilber, "Reminiscences of Southwestern Normal School, 1903-1908," Library Southwestern Room, Southwestern Oklahoma State University, Weatherford, pg 19
  13. Custer County Republican, Jun 30, 1904
  14. 1904-05 Second Quarterly Report, January 5, 1905, Board of Education papers for Southwestern Normal School A68 Folder Series 20 - Quarterly Reports
  15. Minutes, Oklahoma Territorial Normal Schools Board of Regents, April 6, 1904 meeting
  16. A.W. Roper Resignation Letter, Board of Education papers for Southwestern Normal School A68 Folder Series 22 - Resignation Letters
  17. Minutes, Oklahoma Territorial Normal Schools Board of Regents, June 3, 1904 meeting
  18. Custer County Republican, Jun 16, 1904
  19. A.E. Wilber, Teachers' Reports, Board of Education papers for Southwestern Normal School, A68 Folder Series 21 - Miscellaneous Reports
  20. A.E. Wilber, "Reminiscences of Southwestern Normal School, 1903-1908," pg 24
  21. Minutes, Oklahoma Territorial Normal Schools Board of Regents, June 3, 1904 meeting
  22. Special Report, Board of Education papers for Southwestern Normal School, A68 Folder Series 21 - Miscellaneous Reports
  23. Custer County Republican, Dec 17, 1903
  24. Custer County Republican, Jul 14, 1904
  25. Minutes, Oklahoma Territorial Normal Schools Board of Regents, July 5, 1904 meeting
  26. 1903-04 Third Quarterly Report, April 6, 1904, Board of Education Papers for Southwestern Normal School A68 Folder Series 20
  27. Ibid
  28. Minutes, Oklahoma Territorial Normal Schools Board of Regents, June 3, 1904 meeting
  29. Custer County Republican, Jul 21, 1904
  30. "Trail of 100 Years, Arapaho, Oklahoma 1892-1992," Arapaho Centennial Committee, 1992, pg 62, Southwestern Oklahoma State University Library
  31. Custer County Republican, Jan 15, 1903
  32. *The Mukwisto*, (Southwestern Normal student magazine) Vol II (7), April 1906, pg 11
  33. Custer County Republican, Jul 28, 1904
  34. Custer County Republican, Jun 9, 1904





# Southwestern Oklahoma State University Foundation, Inc.

100 Campus Drive

Weatherford, Oklahoma 73096

580-774-3267

## FLOSSIE HAGIN DONATES \$750,000 TO SOUTHWESTERN

Mr. and Mrs. Merkle O'Halloran must like to surprise people. The Cordell, Okla., couple recently had an unexpected "huge" announcement for officials at Southwestern Oklahoma State University in Weatherford.

As trustee of the late Flossie Fletcher Hagin estate, Mr. O'Halloran informed SWOSU President Joe Anna Hibler and Foundation Director Jim Waites that Hagin bequeathed \$750,000 to the university.

The gift is the largest ever one-time donation to Southwestern and is believed to be the second-largest gift ever to a regional university in Oklahoma.

Hagin, who lived in Cordell until her death on March 22, 1999, was a 1928 graduate of Southwestern. She was 96 years old at the time of her death.

This is certainly the kind of surprise that a university president enjoys," Hibler said. "Regrettably, we didn't have the chance to thank Mrs. Hagin. Her gift to Southwestern will have an enormous impact on opportunities both today and in the future."

Hagin's gift is unrestricted, so university officials will work with the SWOSU Foundation Board of Trustees to determine how the gift will be used at Southwestern.

"We are pleased Mrs. Hagin expressed her confidence in Southwestern," Hibler added. "I wish I could have been acquainted with her to express appreciation for this most generous gift."

Southwestern is preparing to celebrate its centennial, and the SWOSU Foundation recently started a \$3 million capital campaign to coincide with the 2001 celebration. The Hagin gift is welcome news.

"This shines light on our centennial campaign," Waites said. "This serves as a terrific kickoff toward reaching our goal."

Being unrestricted, earnings from the endowment will be used in multiple ways to help our students," Waites added.

*continued on page 14*



*Guy and Flossie Hagin on their 50th Wedding Anniversary*



*Southwestern Oklahoma State University in Weatherford recently received its largest ever one-time donation from the estate of Flossie Fletcher Hagin of Cordell. SWOSU President Joe Anna Hibler accepts a \$750,000 check from representatives of the estate, trustee Merkle O'Halloran (middle) and attorney Mark Wesner, both of Cordell. Mrs. Hagin and her husband, Guy, were both 1928 graduates of Southwestern.*



*continued from page 13*

Hagin was born on a farm southeast of Putnam in Custer County on September 3, 1902. She attended high school in Thomas and Independence and graduated from Independence in 1923. She then went to Southwestern where she earned her teaching certificate. She taught one year in Thomas where she also coached basketball.

She then married Guy W. Hagin in 1926. They both taught school in Roger Mills, Jackson and Beckham counties. Although they both liked teaching, the Hagins decided in 1934 to change professions when they were offered the International Harvester dealership in Sayre. In 1936, they were offered the same dealership in Cordell where they operated until 1963 when they retired.

During the war years, the Hagins were very active in the local C.A.P. organization, doing search and rescue work across Oklahoma. Mrs. Hagin was a qualified radio operator in the state network. She was also commended by the United States Naval Air Department for grading the highest on three state region examinations for officer promotion. She ranked as a Captain.

The Hagins maintained their home in Cordell while traveling extensively across the world. Mr. Hagin, who was also a 1928 Southwestern graduate, passed away in 1976, but Mrs. Hagin continued to travel and maintain membership in many organizations.

In 1988, Mrs. Hagin was presented a 50-year pin and life membership from Oklahoma Eastern Star. She held officer positions at both the local and district levels of the Business Professional Women's Club and Methodist Women's District. She served as an officer in Yam-Pa-Rika Study Club, Helpful Neighbors Extension Home Makers Club, Flower and Garden Club, and Presbyterian Women's Work Organization. She was a life member of the Washita County Historical Society and was active in the American Association of Retired People. Mrs. Hagin taught Sunday School and was involved in numerous church activities.

Waites said Foundation trustees can not say enough "thanks" to the many donors for their support of the SWOSU Foundation, which now has assets in excess of \$6 million.

## FOUNDATIONS FOR LIFE

Many colleges and universities have developed huge foundations over the years by leveraging the money donated by their alumni. In order for Southwestern to develop a large foundation we must get started now. That is why we need your help.

Most of us would like to contribute a large gift to help continue traditions like homecoming, reunions and scholarships. Now there is a way a small gift can multiply into a very large gift. Few alumni can afford to make a \$100,000

donation all at one time, however, many are able to donate \$1,000.00 to \$1,500.00 per year. With the Foundations for Life program, alumni can donate either of those two amounts. Then, Southwestern can purchase a life insurance policy worth \$100,000.00 (depending on the donors age and health), which significantly increases this tax-deductible gift. You, the donor, can chose the number of years you want to pay and the amount.

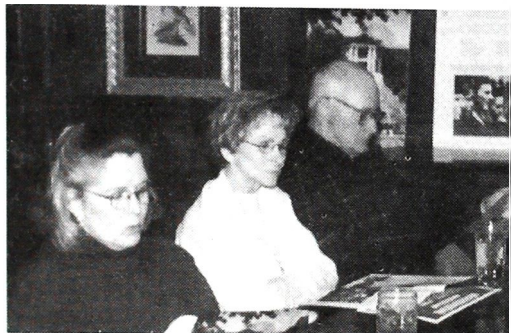
In certain cases, health or age can make the cost of insurance prohibitive. We have options available.

These funds can be used as you request and/or will be used to continue to attract top students to come to Southwestern. We want to continue to get our share of the cream of the crop.

If you have a child or grandchild that you are concerned about, a special provision can be added to provide funds



*Jerry Kinzer talks about the Foundations for Life program, while his assistant, Michelle Connel, looks on.*



*(Left to Right) Terry Magill, Shirley Huser, and Lamar Crall look at some information as they listen to Jerry Kinzer explain how the Foundations for Life Program works.*

for education should something happen to you before the child reaches age thirty. Please contact Jerry Kinzer at (405) 946-9899 or Jim Waites at (580) 774-3267 to find out more on how you can participate in the Foundations for Life program.

There are other tax and estate options. We have professional advisors, CPAs and attorneys available or we can coordinate directly with yours.

Any inquiries from licensed insurance agents are welcome.



# LET'S GO TO THE RACES

The annual President's Day at the Races was held April 17, 1999, at Remington Park in Oklahoma City. About 60 people enjoyed a food buffet and a chance to win on the horses. The fourth race of the day was named after Southwestern. Rob Moses, Charles Page, Jim Litsch, Mark Lumpkin and Rouben Tourian had their picture taken in the winner's circle with the winning horse and jockey.

*Below: (left to right) Mark Lumpkin, Euteva Widener, Rob Moses and Dean Brown decide who to bet on in the next race.*



*Above: (left to right) Glenn Zink, Jim Waites, Alumni and Foundation Director, and Rick Skinner have a good time between races at Remington.*

*Below: (left to right) Cecil Perkins, Bob Hill and Don Litsch enjoy the chance to get together and visit.*



*Above: (left to right) Kelli Litsch, Ronna Vanderslice and Vicki Hatton study their racing programs for clues on which horse might win the next race.*



*Left: Rita and Richard Hasley, Alumni Vice President, take a break from the horses and enjoy the buffet.*



# SWOSU LIFETIME

## Lifetime Couples

Charles and Mary Abercrombie  
Hawkins and Nancy Adams  
Tom and Janie Aday  
Gary and Edie Akin  
A. J. and Shirley Alexander  
Arch and Bonnie Alexander  
Vita Arndt  
Jeff and Tonya Arnold  
James and Frankie Bailey  
Irvine and Gertrude Barber  
James and Rosalie Bates  
Joe and Bonnie Batles  
Richard and Madeline Baugher  
James and Jana Beasley  
Johnny and Judy Beech  
Gary and Cheryl Bell  
Michael and Kim Bennett  
Mark and Jan Bergen  
Bill and Theta Juan Bernhardt  
Brad and Jeanine Berrong  
Mark and Connie Berrong  
Ed and Winnie Ola Berrong  
Ken and Jerry Ann Bibb  
Paul and Elmonette Bixler  
Richard and Melanie Bixler  
Darrel and Diane Bose  
Todd and Teri Boyd  
Edgar and Caroline Brady  
John and Linda Bredehoff  
Bill and Suzie Brewster  
William and Kay Brogden  
Farris and Betty Brookman  
Bill and Audie Brooks  
Bob and Tany Brown  
H. Blanton and Faith Brown  
Mike and Debbie Brown  
Marian Bryant  
Ed and Kay Buie  
Fred and Gene Burch  
Hoyt and Kim Burcham  
Stuart and Carolyn Kay Burchett  
Ed Burchfiel  
Michael and Maurine Butts  
Fred and Ann Caudle  
Victor and Amy Caudle  
Stanley and Joyce Chapman  
Tate and Deborah Chesney  
Larry and Judy Clowdus  
Jim and Patricia Cochran  
Dean and Carolyn Copeland  
Allen Covalt  
Sammie Cox  
Lamar and Opal Crall  
Sherman and Willa Crawford  
Howard and Kathryn Crisp  
Jim and Maxine Crook  
Heith and Kimberly Crosby  
Bill and Meredith Cunningham  
Francis Curb  
Nancy Curry  
Richard and Dana Darby  
Marvin and Marilyn Daugherty  
Marion and Dolores Davidson  
Bill and Faye Davis  
James and Mary Dawson  
Bill and LaVerne Dawson  
Michael and Elizabeth Deimund  
Quinton DeVaughan  
James and Rosemary Dick  
Roy and Virginia Dick  
Douglas and Sandra Dickerson  
Marion Diel  
Keith and Judy Dodson  
Larry and Sharon Duffy  
Pat and Carlyon Dunn  
Bob and Phoebe Eaton  
Tyron and Letty Eby  
Jerry and Donna Evans  
Doyle and Betty Fenn  
Lois Fisher  
Paul and Dottie Flick

Gary and Carol Lou Ford  
Doug and Nancy Fowler  
Danny and Ann Frame  
Doug and Elaine Fransen  
Alice Lea Freeland  
Sherman Freer  
Bob and Nancy Gallop  
J. M. and Eunice Gamble  
Ed and Mary Garrison  
Sarena Gililland  
Charles and Pauline Gillingham  
David and Ann Gillingham  
Leonard and Dorothy Gillingham  
Keith and Norma Glasgow  
Jamie and Juanita Goad  
Charles and Beth Anne Graft  
Jessie Graves  
Stephen and Melinda Griffin  
Jerry and Shawn Grizzle  
David and Elizabeth Gwinn  
Clark and Vivian Sills  
Earl and Mable Hamburger  
Gary and Susan Hamburger  
Ed and Betty Hamilton  
Don and Jean Anne Hamm  
James and Pam Hargis  
Vern and Vaita Harris  
Darryl and Carly Haynes  
Ruth Heatley  
Harvey and Betty Jo Heffel  
Ross and Melba Hensley  
Don and Glenna Hertzler  
Doyle and Roberta High  
Larry and Merle Hilburn  
Robert and Donna Hilton  
LeRoy and Juana Hipkins  
Kenny and Cynthia Jo Holloway  
John and Debbie Hubanks  
Mitchell and Ann Hull  
Lowell and Norberta Irby  
Garvin and Ellen Isaacs  
Doyle and Fay Jackson  
Harold and Margaret Jackson  
W.L. and Gwen Jackson  
Jerry and Frankie Jameson  
Fred and Doris Janzen  
Sherman and Imogene Johns-Freer  
Don and Donna Johnson  
Cecil and Zola Jones  
Wayne and Marjorie Jones  
Michael and Lily Kendall  
Bob and Betty Ann Klaassen  
Skip and Jo Jo Klingman  
Mr. and Mrs. Ned Kysar  
Pearl Lawson  
Gary and Mariene Leddy  
Anthony and Shirlene Lenz  
Darill and Janelle Leverett  
Danney and Janice Lidia  
Dean and Wylodean Linder  
Jim and Peggy Litsch  
Larty and Glenda LoBaugh  
Verlin and Jacqueline Long  
Joanne Long  
James and Jeanne Loomis  
John and Jacqueline Ludrick  
Joan Mahnken  
W.T. and Vicki Malone  
Charles Wayne and Sara Marquis  
Don and Betty Mathews  
John and Debbye Mathews  
Max and Bettye Jo Maupin  
John and Joyce May  
Carlos and Joyce McBride  
Rodney and Donna McCrory  
Raymond and Verda McKellips  
Monte and Vickie Meacham  
Leo and Jerry Meece  
Max Megli  
LaVern and Sheryl Melton  
James and Jan McKenzie  
Raymond and Wanda Mirtz

Don and Thedis Mitchell  
Lee and Jessie Lou Monigold  
Keith and Beverly Jo Moore  
Leon and Carolyn Moore  
David and Jaymie Morley  
Louis and VaNita Morris  
Robert and Carol Moses  
Tom and Sue Nabors  
Hiram Neal  
Coot and Betty Lou Nelson  
Dorothy Nichols  
Terry and Doneta Nichols  
Frank and Dorothy Nikkel  
Clifford and Fern Niles  
Terry and Mary Nowka  
Ted and DeAnn Ogilvie  
Glenn and Linda Sue Oneth  
Billie and Gwen Pasby  
R.L. and Lucille Patton  
Larry and Pauline Pennington  
Gene Peterson  
Don and Marjorie Pigg  
J. Stan and Pat Powers  
Lessley and Marianne Price  
Don and Peggy Prock  
Judith Pruzzo-Hawkins  
Roger and Marolyn Pryor  
Darin and Kathy Purinton  
Joe and Chelly Quinn  
Charles and Suann Raff  
Michael and Donna Ratke  
Ed and Patta Reed  
Earl and Louise Reynolds  
Roger and Kim Reynolds  
Dan and Margaret Rivkin  
Don and Ora Lee Roberts  
D. L. and Sally Robertson  
Mike and Vera Lynn Robertson  
Warren Henry Robertson  
Ken and Susan Rose  
Robert and Rita Russell  
Gale and Martha Sadler  
Wayne and Joidy Salisbury  
Jack and Twila Sanders  
Otis and Adelia Beth Sanders  
Don and Sally Sappington  
Joseph and Patti Scheefers  
Marvin and Loree Schlichting  
Arthur and Bertha Schmidt  
Gerald and Margie Schmidt  
Peggy Schmidt  
Calvin and Wanda Schneider  
Lloyd and Ramona Searcey  
Jane and Randy Sells  
Eddie and Helen Seyler  
Ralph Shockley  
Allen and Vera Siemens  
Nelson and Jane Sims  
Coy and Nina Smith  
Kenneth and Ann Smith  
D.M. and Phyllis Sokolosky  
Gilbert and Nancy Srygley  
Roger and Brenda Stacy  
Larry and Samye Steward  
Michael and Cynthia Stowers  
Don and Sandra Stutters  
Barbara Sweet  
Robert and Grace Templeton  
Jack and Helen Thomas  
Bill and Evelyn Thompson  
Riley and Vera Tippens  
Charles and Phyllis Torbeck  
Leonard and Katie Travis  
Robert and Karen Travis  
Nathan and Freda Tubb  
Charles Tucker  
J.L. and Irene Unger  
Leland and Ella Marie Unruh  
Connie Vaughan  
Lamont and Palma Veatch  
Eddie and Janis Vowel  
Jody Carl and Kimberly Walker

John and Sandra Walker  
Bob and Margret Walton  
Don and LaVita Ward  
Jack and Doris Ware  
Katie Ware  
Jim and Sue Warnke  
Charles and Lisa Weaver  
Charles and Mary Lee Webb  
M.C. and Louise Weber  
Brian and Jana Welch  
Melvin and Betty Lee Westmoreland  
Garry and Tamela Whaley  
Mori and Teri White  
Vernice and Mary Widney  
Lea Ann Williams  
William and Robin Williamson  
Melvin and Amber Wilson  
Lorry and Carole Woodard  
Dora Woods  
John and Edna Word  
Ernestine Wright  
Everett and Jenny Wright  
Jake and Mary Wright  
Harold and Carol Wright  
Charles and Hazel Wycoff  
Jerry and Carrie Yowell  
Bill and Edith Yowell

## Lifetime Singles

James Adcox  
Candi Aguirre  
Ruth Bozarth Alexander  
Edna Allen  
Ben Allison  
Delbert Amen  
Ron Anderson  
E. Vann Greer Andrews  
David Anpalagan  
Jim Archer, Jr.  
Suzanne Arnold  
Arnold Baergen  
Harold Baggett  
Pat Kelly Baker  
Sandra Gay Baldwin  
Ronald Barber  
Connie Barnes  
James Barnhart  
Imogene Base  
Mary Ellen Bates  
Robert Bates  
William Bates  
Tom Baucum  
Patricia Beadle  
Jerry Beech  
Steve Belcher  
Yvonne (Polly) Benedict  
Elloween Bennett  
Helen Bennett  
Myron Bergen  
Zane Bergen  
Mary Harkins Berrong  
Randy Beutler  
Susie Bewley  
Philip Beyer  
Kevin Bilbrey  
Isabelle Ann Billen  
Teed Bishop  
Grace Boal  
Elaine Boatsman  
Louis Bollnback  
Jack Bonny  
Carol Boren  
Marjorie Bose  
Terry Robert Boucher  
Olan Bourland  
Karla Jo Bowen  
Beatrice Moseley Bowers  
Faye Boyers  
Donna Boyett  
Vada Boyle  
Opal Bradley  
Andi Brankel



# ALUMNI MEMBERS

Jerry Brehm	Glenace Habbershaw	Todd Lilley	Gary Rader	R. Scott Vincent
Olen Bridges	Pachanee Sungkohobol Haema	Rick Lindley	Jenifer Randle	Chris Vines
Burt Bridgford	Norma Hamburger	Robert Little	Betty Jo Reed	Bradley Donald Vogler
Donald Clyde Briix	Bill Haney	Allan Long	J.L. Regan	Henry Vogt
William Brooks	Rebecca Jean Harder	Mary Long	Elaine Regier	Hal Vorse
Cindy Brungardt	Neva Hardiman	George Lowry	Susan Regier	Virginia Waddle
Carolyn Sights Buckenmaier	Richard Hasley	Maryetta Maassen	Rollin Reimer	Scott Alan Wales
Earl Buckmaster	Kenneth Hastings	Ron Maassen	Danny Chris Reinke	James Walker
Grace Burcham	Darci Shawn Hatter	Margaret Maddox-Flaws	Larry David Reitnauer	Jeff Walker
Fred Burrow	Mary Vosburgh Hatter	Kathe Madole	Fran Reuber	Ronnie Walker
Gary Buser	James Hawkins	Bruce Magill	Joe Reynolds	William Walker
Loren Buss	Howard Hayes	Doug Mallouf	Mark Reynolds	Beulah Wall
James Butts	John Hays	Yvonne Marshall	Maxine Rhodes	John Edward Wall
Jim Calvert	Jack Head	Flavil Martin	Marana Rice	Judy Kay Wall
Linda Campbell	Jeannette Heiberger	Jimmy Martin	Cherie Gay Richardson	Thelma Jane Walsh
Avis Cereghino	Jewel Heilbron	Lynda Ann Martin	Harvey Miller Richert	W.W. Ward
Harlene Chastika	Tammy Leigh Heizelman	Don Matheson	Larry Paul Robertson	James Warkentin
Jerrell Chesney	Lee Bain Helms	Lois Mathis	Sharon Roessler	Michael Warkentin
Cecil Chesser	Larry Henderson	Foster Mayer	Virgil Rogers	Randolph Warren
Ellen Church	Faye Henson	Kellie Jean McCann	William Edward Rolison	Basil Weatherly
Elizabeth Coleman-Hix	Terri Herrod	Nancy McClain	Frankye Romig	Don Weeks
Paul Conner	Joe Anna Hibler	Martha Ann McCaslin	W.R. Romig	Patricia Welch
Amy Cooper	H.P. Hickerson	Lynn McClung	Johna Kay Roof	Linda Lee Whaley
Carl "Choc" Cooper	Andy Hicks	Cordelia McCullough	Claude Howard Rose	Grover Cleveland Wheeler
Robert Corbin	Benny Hill	Goldie McKelvy	Glenna Rose	Sandra Ruth White
Doris Corley	Chuck Hill	David McKenzie	Douglas Rowley	Billy Williams
Jack Hanlon Cotter	James Hill	Clifford Meece	Melinda Rushing	William Wilmeth
Patrick Cowan	Jerry Hodge	Lee Ann Meece	Orphas Dale Rusk	Kurt Winden
Glenda Creach	Tresa Hohmann	Kenneth Meek	Homer Ryan	Luther Winkler
Martha Crook	Raymond Hoke	Blanche Metcalf	William Sartor	Freda Burch Winsett
Fannie Crump	Sheila Hoke	Iris Metcalf	Fusao Sato	D.J. Witherspoon
Benjamin Cumbus	Joe Richard Homsey	Keren Payne Miller	Geraldine Sauer	Losey Witherspoon
Robin Cusack	Lawrence Hoover	LaRita Purdy Miller	Stephen Sauer	Roy "Deck" Woldt
Samuel Cypert	Kari Hopkins	Viola Miller	Rose Mary Sauseda	Norris Wood
Sam Dalton	Elsie Howe	David Misak	Charles Edward Schilz	David Woods
Scott Damron	Lorene Hull	Eli Mize	Darrell Lee Schultz	Janet Word
Barbara Daniel	Shirley Huser	Cindy Kaiser Moore	Elizabeth Schumacher	Tommy Lee Worth
Tom Davis	Harold Dean Ingram	Melda Moore	Vivian Schutz	Sandra Wilson Wright
Wiley Gene Davis	Kirk Irby	J. Loretta Moran	Joe Schwemin	Bob Wyett
Cecil Devine	Thomas Irby	Ruth Ann Morgan	Jana Lou Scott	Kaye Zachary
George Dickey	Johnny Iserhagen	Thurman Morris	Ronald Scott	
Melodee Dietz	W. E. Jackson	William Morris	Darlyne Seal	
Gale Dills	Jana Lee Jacobs	Jan Morton	David Seigler	
Lonnie Donaldson	W. Rudie Janzen	Kerry Wayne Moser	Mike Sewell	
Michael Doison	Robert Jeffery	Mark Mouse	Russell Sharp	
Max Dougherty	Charlene Johnson	Melani Mouse	Thel Ann Shelby	
Kelly Earl Douglas	David Johnson	Mary Lu Mulberry	Ann Shinault	
Roy Dowdell	Dwayne Johnson	Mike Muncy	Howard Nathan Shoumaker	
Donald Dowling	Gordon Johnson	Lou Rae Murchison	Nandana Silva	
Freddie Downs	Roy Johnson	Linville Murdock	George Simmons	
James Doyle	Ruby Johnson	Dawson (Tack) Nail	Craig Smith	
Jerry Doyle	Karla Johnston	Edwin Nall	Patricia Smith	
Lori Dreiling	Dwayne M. Johnston	Linda Nance	Robert Smith	
Kenneth Duerksen	Roger Johnston	Juanita Neal	Rose Johnson Smith	
Phillip Edelblute	Pauline Jones	Kaisie Nelson	Sidonna Smith	
Don Elliott	Janet Kamphaus	Robert Allen Nickey	Kendall Wayne Southern	
Ruth Eskew	Richard Kapka	Kathlene Niebruegge	Jerry Speed	
Brenda Etherton	Bobby Karlin	Ed Nikkel	David Spivey	
Charles Evans	Gary Kauk	Rodney Ninman	Jim Spoon	
Larry Evans	Ronnie Keith	Ralph Nittolo	Duane Stevens	
Ruth Evans	Bernard Keller	Harry Nowka	Ricky Lynn Stevens	
David Fain	Ralph Kelting	Ethel Nunn	Phillys Stevenson	
Michael Farabee	Walter Kerr	Paul O'Hara	Ann Marie Story	
Valerie Fariss	Jerry Don Key	Richard O'Hara	Steve Stroud	
Brenda Fast	Eulond King	Benjamin O'Maiye	Terri Nora Tafinger	
Mabel Fenter	Howard King	Lowell Oden	David L. Tautfest	
James Ferguson	Jimmy King	Cherokee Orndorff	Clyde Taylor	
Roberta Finch	Neil King	Anita Pauwels	Ron Teasley	
Juanita Finlayson	Jerry Kinzer	Denice Payne	Garline Hutson Thomas	
Dorothy Forbis	Larry Knisley	Mary Perkins	Johnnie Fay Thomas	
Donald Foster	Edward Krewall	Julie Ann Phillips	Sam Thombrough	
Betty Fry	Vesta Kuntz	Joe Pierce	Robert Todd	
David Lee Fry	Betty Jo LaBahn	Nola Pirog	Moushegh Tourian	
Pam Funk	Emma Lamar	Bill Poteet	Gregory Towe	
Charles Gatlin	Elsie Lang	Bryan Potter	Mike Travis	
Rosa Lenora Gilliland	John Lassiter	Rick Powell	Randal Treiber	
Larry B. Godley	Ray Lau	Mary Prather	Charles Trentham	
Terry Lynn Goforth	Betsy Leonhart	Leone Pressley	J. Brant Turner	
James Rene Graft	Timmy Don Leslie	Doris Price	Arnold "Swede" Umbach	
James Steven Graham	Alicia Leslie-Marun	Craig Puckett	Stella Umbach	
Edwin T. Green	Daniel Lewis	Shirley Lee Pugh	M.S. Van De Water	
Ted Guffy	Grady Lewis	Ruth Purdy	Michael Vermillion	





## DO YOU KNOW WHERE YOUR DIPLOMA IS? MORE THAN 160 REMAIN UNCLAIMED

The Registrar's Office has quite an accumulation that will be of interest to specific alumni. According to Registrar Bob Klaassen there are approximately 164 unclaimed diplomas that belong to graduates from as far back as 1966.

If your name appears on this list, send a check or money order for the amount indicated to: SWOSU Registrar's Office, 100 Campus Drive, Weatherford, OK 73096.

<b>1966</b>				<b>1979</b>			
Lousch, Richard Wayne	Master of Teaching			Travis, Ginger J. Kane	Master of Ed	\$10.00	
<b>1969</b>				Verhines, Steve E.	BS in Ed	\$10.00	
Holman, Shirley Aaron Caldwell	BA in Ed	\$10.00		<b>1980</b>			
<b>1971</b>				Alexander, Steve T.	BS	\$10.00	
Beavers, Pamela Beth	BS	\$10.00		Hansen, Florence C. Haskell	Master of Ed		
Compston, Monte L.	BA in Ed	\$10.00		Margerum, Lois Lynn K.	Master of Ed		
Copple, Oral Michael	BS in Pharmacy			Stephens, Michael Alan	BS	\$10.00	
Harder, Nolita Jo	BS in Ed			Taylor, Virgil Everett	Master of Ed	\$10.00	
Igo, Charles Roger	BA in Ed	\$10.00		Woolbright, Dianna Beth Stout	BS in Ed	\$10.00	
Maloy, Loretta Ann Horrell	BS in Ed			<b>1981</b>			
<b>1972</b>				Balentine, Janie L. Stacy	Master of Ed		
Davis, Dale Eugene	BS	\$10.00		Tran, Hong Bich	BS in Pharmacy		
Fleming, Richard Milam	BS in Ed	\$10.00		<b>1983</b>			
Lyon, John Clark	BA			Adams, Tom P.	BS	\$10.00	
<b>1973</b>				<b>1984</b>			
Hodges, Dale L.	Master of Ed	\$10.00		Charles, Frances N.	BS		
Johnson, Gerald James	BS	\$10.00		Fincher, LaRonda	BS	\$10.00	
Monroe, John Alton	BA			<b>1985</b>			
Sanders, Perry Ray	BS	\$10.00		Stearman, Michael S.	BS in Ed	\$10.00	
Taylor, Tommy Thurman	Master of Ed	\$10.00		Wilhelm, Terry Lynn	Master of Ed	\$10.00	
White, Melba S.	Master of Ed	\$10.00		<b>1987</b>			
<b>1974</b>				Pittman, Roger Alan	BA	\$25.00	
Crow, Kenneth Wayne	BS	\$10.00		<b>1988</b>			
Fitch, Donna Sue	BS in Ed	\$10.00		Crockett, Joe David	BS	\$25.00	
Hunter, Margaret Ann Holsapple	Master of Ed	\$10.00		Reynolds, Christy Diane	BS in Ed		
Marcy, Catherine Kay	BS in Ed			<b>1990</b>			
Martin, Jr., Lucian H.	BS in Pharmacy	\$10.00		Hill, Cary Christian	BS		
Monts, Isaac Lewis	Master of Ed	\$10.00		Hines, Billy Lloyd	Master of Ed	\$25.00	
Nicholson, Alton Grant	BS			<b>1991</b>			
Reynolds, Thomas Maywood	BS	\$10.00		Bolf, Jeffrey Lynn	BS	Bus Hold	
Rhoads, Elizabeth Kay Wallace	BS in Ed	\$10.00		Buschman, Doyle A.	BS	\$25.00	
Tande, Gary Otto	BME			<b>1992</b>			
Williams, Frances Ellen	Master of Ed			Baccus, Rodney L.	BS in Nursing	Bus Hold	
<b>1975</b>				Morrison, Carrie Michelle	BS	\$25.00	
Blake, Ross D.	BS in Ed	\$10.00		Musick, Carla Jane	BS in Ed		
Carter, Teresa Annelle Barnard	BS	\$10.00		Reynolds, Christopher Brian	BS	Bus Hold	
Williams, Ronald I.	BS in Ed	\$10.00		Toppah, Kathleen L. Bearbow	BS in Med Records	Bus Hold	
Winfield, Marilyn Kay Pilkington	BS	\$10.00		<b>1993</b>			
Wittrock, Joseph F.	BS	\$10.00		Elliott, Naomi Nmano	BS in Pharmacy	Bus Hold	
<b>1976</b>				Kourt, Kevin Brent	BS in Pharmacy	\$25.00	
Coleman, Homer W.	BS			McGee, Kevin Dale	BS in Eng Tech	\$25.00	
Douglas, Gwendolyn K. Mustain	BS in Ed	\$10.00		Stokes, Donnie Ray	BS	\$25&BusH	
Johnson, Joyce C. Ogletree	Master of Ed	\$10.00		West, Anthony Dudley	BS	Bus Hold	
Rhea, Barbara Louise Bowers	BA	\$10.00		<b>1994</b>			
<b>1977</b>				Millican, Meridith Michelle	BA	\$25.00	
Barrow, Mark Kevin	BS	\$10.00		Poindexter, Russell Brent	BA in Ed		
Hall, Charles Wayne	Master of Ed	\$10.00		Washington, Alrick Ramon	BS	Bus Hold	
Johannesmeyer, Patricia	Master of Ed	\$10.00		<b>1995</b>			
Weitz, Gail Robertson	BA in Ed			Barney, Robert K.	BA	\$25.00	
Williams, Kenneth Wade	BS	\$10.00		Cabiness, Rodney Dale	BS	\$25.00	
<b>1978</b>				Carpenter, Brenda	Master of Ed	\$25.00	
Dennis, Marie O. Matthews	BS in Ed			Collins, Lillian Ray	BS in Ed	\$25.00	
Rutherford, Jimmy Allen	Master of Ed	\$10.00		Garretson, Randy Ardell	BME		
Whitley, Sandra Louise	Master of Ed			Grigg, Janet Gail	Master of Ed		
<b>1979</b>				Halverson, Tana	BA	\$25.00	
Brown, Clark Travis	BS in Pharmacy	\$10.00		Hanks, Michael Paul	BA	\$25.00	
Jones, Janice S. Graves	Master of Ed			Hartman, George	BS	\$25.00	



## Diploma list continued from page 18

Hartman, John H.	BS	Bus Hold	Nichols, Nicole Lea	BS in Ed	
Hayes, Barbara Ann	Master of Ed	Bus Hold	Smith, Valori Ann	BS	
Hightower, Brian Lee	BS in Ed	\$25.00	Williams, Calvin	Bach of Rec	Bus Hold
Krohmer, Michael Ray	Bach of Gen Tech	\$25.00	Wood, William Keith	BS in Ed	\$25.00
Martinez, Jose' A.	BS	Bus Hold	<b>1997</b>		
Mathews, James Marian	BS	Bus Hold	Bauldridge, Lori Parham	BS in Ed	Bus Hold
Miller, Craig Gale	Bach of Rec	Bus Hold	Colbert, Jode Jynx	Bach of Rec	
Rightnowar, Harley O.	BS	\$25.00	Cole, Robert Garth	BS	
<b>1996</b>			Garrett, Stephanie DeAnn	BS	\$25.00
Becker, Brandy Sue	BS	\$25&BusH	Hileman, Amy Jessica Hild	Bach of Music	
Boyer, Tammy Kim	BS	Bus Hold	Nguyen, Jimmy Ngoc	BS in Pharmacy	
Brown, Michael L.	BS	\$25.00	Oren, Dodie Jane	BS	Bus Hold
Clothier, Paula Sue	BS	Bus Hold	Pearson, Robert Anthony	Master of Ed	
Crawford, Anita Sue Tyson	BS	Bus Hold	Richards, Garfield C.	BS	Bus Hold
Dunham, Stephanie Runia	BS	\$25.00	Stratton, Kelli Juanita(Gray)	BS in Ed	
Erwin, Kimberly	Master of Ed	\$25.00	Touchstone, Tony Duane	BS	
Hightower, Brian Lee	BS	\$25.00	<b>1998</b>		
Jenks, Amy Jo	BS	\$25.00	Berry, Jo Shawn	BBA	
Lewallen, Heather Anne	BS in Ed		Blackwell, Crystal G.	BS in Ed	
Lewis, Robert Howard	BS	Bus Hold	Bryant, Christopher Lynn	BS	Bus Hold
Morris, Marc R.	BS in Ed	Bus Hold	Gattenby, Kenneth Charles	BS in Pharmacy	
Mugambi, Flora Mwari	Master of Ed	Bus Hold	McNeely, Adam Dwayne	BS	Bus Hold
			Rogers, Crystal M.	BS in Pharmacy	

# IRBY RECEIVES OUTSTANDING ALUMNUS AWARD

Lowell M. Irby of Artesia, N.M., was recently selected by the Southwestern Oklahoma State University School of Pharmacy Alumni Association as recipient of the 1999 Outstanding Alumnus Award.

Irby and his wife, Norberta, were honored at the recent SWOSU School of Pharmacy senior banquet held on the Weatherford campus.

Irby graduated from Artesia High School in 1951 and entered Southwestern in the fall. He lettered in football during the 1951-52 season and was active in the pharmacy association and Wesley Foundation at the First United Methodist Church.

He graduated from Southwestern in 1955 and moved back to Artesia to work with his father and brother at Irby Drug. In 1958, Irby opened Lowell's Pharmacy which he has owned and operated for the past 41 years.

The Irbys have been very active in the Artesia community, serving as volunteers for many organizations.

Mr. Irby has won numerous pharmacy awards and along with sons Kirk and Wade, developed the first immunization practice in a retail pharmacy in New Mexico. The Irbys still have the only pharmacy which has a collaborative practice agreement with a local physician. Under the agreement, the

Irbys perform a variety of laboratory tests including hypolipidemia, glucose, pro time/INR and blood pressure.

In addition to his pharmacy, Irby owns and operates I & W, an oilfield well servicing agency.

Irby has long been associated with Southwestern's School of Pharmacy. He has supported the school in many ways. At the recent senior banquet, six Southwestern students were recognized for re-

ceiving scholarships from the Irby Family during the 1999 spring semester. He and Norberta have been married for 39 years. In addition to sons Kirk and Wade, who both are SWOSU graduates, they have another son, Eugene, and daughter, LaNette.



Lowell Irby (left) of Artesia, N.M., recently received the Outstanding Alumnus Award from the Southwestern Oklahoma State University School of Pharmacy in Weatherford. Making the presentation to Irby was Dr. H. David Bergman, dean of the SWOSU School of Pharmacy.



# SWOSU Alumni Notes...

...**Rick Mefford** has been appointed Superintendent of the Hollis Public School System.

The Eldorado native graduated from SWOSU in 1970 with a Bachelor of Science degree in education. Mefford continued his education receiving a Master's and Elementary Principal's Certification in 1992 and completing requirements for the Superintendent's Certification Program at Southwestern in 1996.

...1968 SWOSU graduate **Ed Robinson** has been named to a staff position with the Oklahoma Secondary Schools Activities Association(OSSAA).

Robinson graduated from Southwestern with a BS in education. He began his teaching career at Hollis where he was a classroom teacher, coached baseball and assisted with football. He has been the Junior High Principal, High School Principal, and most recently, Superintendent. Robinson spent 26 years in the Hollis School System.

Some of his new responsibilities will include determining basketball districts for classes A, B, 2A, 3A and 4A, in charge of baseball districts and tournament sites, and assisting with eligibility cases brought before the Association.

...Southwestern graduate **Bob Drury** has been named the new Altus Schools assistant superintendent. He recently retired as the superintendent of the Tipton Childrens Home. In his career he has also served as the superintendent of the Tipton and Eldorado Public School Systems.

Drury earned his masters degree in counseling from Southwestern in 1960.

...**Laverne Palmore** has been named Harmon County Teacher of the Year. She was presented with a plaque and honored at the annual Hollis School faculty get-together.

Palmore graduated from Hollis High School and then earned a Bachelor of Science degree in Education from Southwestern. Mrs. Palmore has been in the Hollis Public Schools for 19 years.

...SWOSU graduate **Sharon Holmes** of Houston Texas has published a fictional novel "Dreamlovers."

The Clinton native graduated from Southwestern in 1985. This is her first fiction book.

...Oklahoma Supreme Court Justice **Yvonne Kauger** has been honored by The American Judicature Society, a national organization that promotes excellence in the courts. Justice Kauger was presented with the Herbert Harley Award. This award is given periodically to individuals who make outstanding contributions that substantially improve the administration of justice in their states.

The award was presented by AJS Chair Hon. Judith C. Chirlin at the opening ceremonies of The Sovereignty Symposium XII, a forum of the Oklahoma Supreme Court addressing the sovereignty issues of Native American tribal, state and federal courts.

Judge Chirlin stated that "Justice Kauger's strong belief that the public must be informed about the state courts and the importance

of an independent judiciary. Her insistence that relevant public information be available are evidenced by her innovative initiatives in forming a Blue Ribbon Commission of attorney and public citizens to study the feasibility and necessity for independent, fair and impartial evaluation of the appellate judiciary subject to retention election; co-authoring the first public information book on the Oklahoma Supreme Court; developing the experimental use of video tape as court record; and creating the first state court website in the United States."

Kauger graduated from Southwestern in 1958.

...**Brian Chaney** was hired to teach electronics at the Southwest Technology Center in Altus.

The Navajo native graduated from SWOSU with a bachelor of science degree in technology education in December, 1998. Chaney also received an associate of applied science degree in electronics engineering from Oklahoma State University in Okmulgee in 1996; and an associate of arts degree in general education in 1997 from Western Oklahoma State College.

...**Mark Dodson** has been named the 1999 Distinguished Young Pharmacist of the Year in Oklahoma. He graduated from SWOSU in 1989 with a pharmacy degree.

Dodson has been employed at the Bunker Hill Pharmacy in Altus for 9 years.





# MCKEE APPOINTED HEAD OF WYOMING DEPARTMENT OF HEALTH

Governor Jim Geringer appointed Dr. Garry McKee to head the Wyoming Department of Health. McKee replaced Don Rolston who retired last January.

McKee has been employed with the department since June 1998 as the Laboratory Administrator. Before then, McKee was the Chief of Public Health Laboratory of the Oklahoma State Department of Health from 1980-1998.

Geringer said McKee's responsibilities include addressing the needs of a growing aging population, continued cooperation with other state agencies to deal with methamphetamine and other substance abuse problems, working on children's health care issues, managing funds to meet changing health care needs and advancing telemedicine opportunities within the state.

"I am pleased to announce the appointment of Dr. Garry McKee as director of the Department of Health," Geringer said.

"He is a well-qualified professional with years of training and experience. Having the responsibility of a 1,500 person agency is a challenging task and I have every confidence in Dr. McKee's abilities to forward an already successful department to the next level."

"Garry is well-respected by Wyoming's medical com-

munity and by his peers in the department. He has proven himself to be a thoughtful leader, an able communicator and is very progressive in his outlook. He understands the

frontier-nature of our state and the importance of ensuring health care infrastructure and services in all areas across the state."

McKee received his Bachelor of Science degree in Biology from Southwestern State College in Weatherford, Oklahoma. At the University of Oklahoma, he was awarded a Master of Public Health degree in 1973, a Master of Environmental Science degree in 1976 and a Doctor of Philosophy degree in 1980.

McKee is board-certified as a High-Complexity Clinical Laboratory Director. He is named on the National Registry of Microbiologists, American Academy of Microbiologists and as a Specialist in Food, Dairy and Sanitation Microbiology. He also received his Medical Technology Internship from St. Anthony Hos-



*Dr. Garry McKee*

pital in Oklahoma City.

An accomplished author, McKee most recently co-authored "A Waterborne Outbreak of E. Coli 0157:H7 Infections: Evidence for Acquired Immunity" which was presented at the 36th Annual Meeting of the Infectious Diseases Society of America in November.

## DAVIS ROAD PROJECT BEGINS

Work on the Davis Road project through the Southwestern Oklahoma State University campus in Weatherford started in August.

Jim Loomis, director of the SWOSU physical plant, said the widening of Davis Road from two to four lanes is expected to take approximately one year. Wittwer Construction of Stillwater is contractor of the \$1.4 million project.

Wittwer expects to complete the road in two phases. In phase one, the road will be worked from Rogers Hall to Parker Hall. The second phase will run from Broadway Street to just past Seventh Street.

Access to several parking lots on the SWOSU campus will be affected, but all parking lots will be open. Access to the Fine Arts Center west parking lot will be made available by a temporary road on the west side of the Music Building from University Drive to the parking lot.

Access to the parking lot south of the Fine Arts Center will be made available by a temporary road connecting it to the Oklahoma Hall parking lot.

Loomis said it will be helpful if everyone plans to enter the SWOSU campus from the south via Seventh, Eighth, Broadway, Custer, State and Bradley Streets.



# Alumni Album

## Former Southwestern Graduates

### 1940s

**Orland Jantzen** lives in Mineral Wells, TX. He earned a B.S. in Physical Education in 1948 from Southwestern. He retired from the Mineral Wells Independent School District. His wife, **Mary Jantzen**, also graduated from Southwestern. She received her B.S. in Elementary Education in 1954, and is also retired from the Mineral Wells Independent School District.

**G.E and Nina (Braniger) Jones** both attended Southwestern. He was here from 1940 through 1942 and he majored in horology. Nina attended classes from 1941 until 1942 and studied pharmacy. They now reside in Weatherford and own the The Woodshed Frameshop & Art Gallery in downtown Weatherford.

### 1950s

**Joe Merchant** lives in Weatherford, OK. He earned a degree in accounting from Southwestern in 1956. Joe is a self-employed certified public accountant in Weatherford.

**Vernice Kaiser** graduated from Southwestern in 1954 with a B.A. in music. He and his wife, Mary Lou, live in Weatherford, OK., where they are the owners of Kaiser Sign and Graphics.

**Clarence Allen** is a retired teacher and lives in Santa Fe, NM. He received a B.A. in Physical Education and History from Southwestern in 1957.

Southwestern graduate, **Herbert Floyce Pierce** earned a B.S. in pharmacy in 1961. He is a retired pharmacist living in Littlefield, TX.

**John and Kay Francis** both graduated from Southwestern in 1969. He received a B.S. in psychology, sociology and physical education. She earned a B.S. in math and Spanish. They live in Boring, OR. He teaches and coaches at Sam Barlow High School and she teaches and coaches at Gresham High School.

**Ronald Engel** graduated from Southwestern in 1966, earning both a B.A and a M.A. in social sciences. He is the Athletic Director at Clinton High School, where he and his wife, Jeanne live.

### 1970s

**Michael Leu** is a Naturopathic Physician at the Cancer Treatment Centers of America and lives in Tulsa, OK. He earned a B.S. in pharmacy from Southwestern in 1978.

**John James** graduated from Southwestern in 1974. He received a degree in pharmacy. He is currently an Officer in the United States Air Force.

John and his wife, Pamela live in Glendale, AZ.

Southwestern graduate, **John Daniel** received his degree in pharmacy in 1972. He is employed as a pharmacist for J & J Pharmacy. He and his wife, Patsy, live in Claremore, OK.

**David Nuzum** graduated from Southwestern in 1986 with an accounting degree. He is now a consultant/owner at Nuzum Consulting.

David and his wife, Karen, live in El Reno, OK.

**Dana Baldwin** is an Extension Educator at the OSU Cooperative Extension and lives in Taloga, OK. She earned two degrees from Southwestern.

Dana earned a B.S. in vocational home economics in 1988 and then received a M.S. in school counseling in 1998.

Southwestern graduate, **Randy Young** is a gas supply representative with Marathon Oil Company in Houston, TX. He earned a B.S. in accounting in 1986.

### 1990s

**Ashley Hancock** earned a B.A. in social science education in 1992. She is the manager at Follett's University Bookstore on the SWOSU campus in Weatherford, OK.

In 1997, **Tara Charles** earned a B.S. in nursing from SWOSU. She lives in Enid, OK., and is an R.N. at Integris Meadowlake.

Both **Rhonda and Joe Galish** graduated from Southwestern. She received a B.S. in office administration in 1990. He graduated in 1991 with a B.S. in business administration.

Rhonda works as a secretary at Fleming Companies and Joe is a Branch Manager at The Associates. They live in Edmond, OK.

### 1960s

### 1980s

# SWOSU

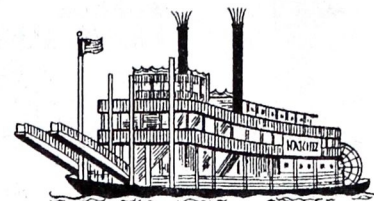


*Cruise into history along the Lewis & Clark Trail, the Oregon Trail & the Columbia River Gorge*

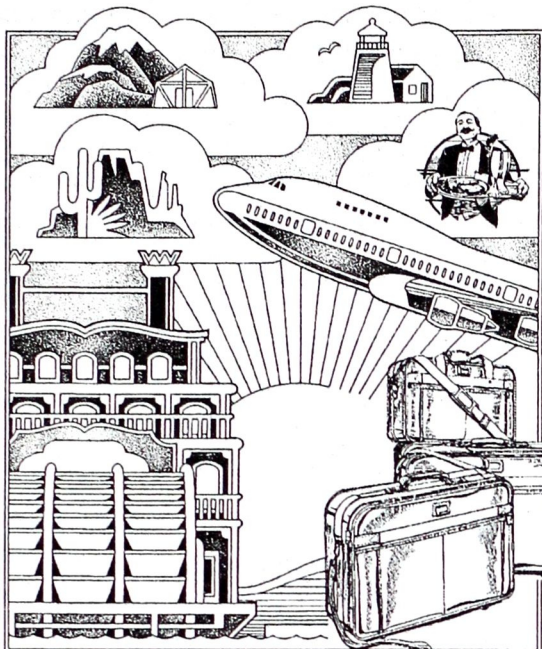
# Cruising the Great Rivers of the West

Southwestern  
Alumni Sponsored  
Cruise!

9 Days on  
Three Great Rivers



*The Columbia, The Snake & The Willamette*



### This All-Inclusive Trip includes:

- ◆ New Exclusive Itinerary & All Shore Excursions
- ◆ All Port Charges
- ◆ Fine Dining
- ◆ Round Trip Airfare
- ◆ Elegant, Authentic New Stern Wheeler
- ◆ Nightly Shows with Entertainment & Dancing
- ◆ Baggage Handling

Due to the uniqueness of this cruise  
space is limited

A deposit of \$250.00 is required  
upon your reservation.

Call Patty Christian at (580) 774-4321  
for date and information.

## Memoriam

Name	City State	Grad Year
Lee Anna Butler Brown	Taloga	1931
Gelene Butterbaugh	Shattuck	1960
Iris Cone	Bartlesville	
Lonnie Gilstrap	Lawton	
Wilma Cedar Tree Horse	Carnegie	
Ada Belle Leonard	Thomas	Attended
Charley Edward Martin	Weatherford	1935
Frieda Sadie Miller	Hydro	
Johnnie Ruth Olsen	Grimes	
Robert Olen "Bud" Potter	Thomas	1964
Norene Pugh	Altus	
Robert "Bob" Reed	Weatherford	Employed
Jamie Robison	Tonkawa	1976
Alice Wealthie Self	Hydro	
Robert Stooksberry	Granite	Attended
Letha Fern Sweeney	Oklahoma City	
Janie Mae Wilson	Carnegie	Attended
Sheila Ann Whitfield	Ft. Cobb	1980
Edith Lavonne Yowell	Reydon	1959 & 69

## FORMER SWOSU PROFESSOR NAMED TO HALL OF FAME

Former Southwestern associate professor, Charles Wayne Ellinger posthumously received the Oklahoma Military Academy Hall of Fame Award. His widow, Marinelle Ellinger of Weatherford, accepted his award.

Ellinger was a first lieutenant in the OMA's Class of 1953. He spent two years in active duty in the Army and five years of duty in the Army Reserves before retiring in 1964. He received the National Defense Service Medal.

Ellinger graduated from the University of Oklahoma and spent more than 25 years as an educator, teaching in the Oklahoma City and Las Cruces, NM areas, before coming to Southwestern.

Ellinger became a member of the Oklahoma Military Academy Alumni Association in 1953 and was active in the group until his death in 1998.



## 1999-2000 Women's Basketball Schedule

<u>Date</u>	<u>Opponent</u>	<u>Place</u>	<u>Time</u>
Nov. 19-20	Tex-Ann Classic	Stephenville TX	TBA
Nov. 26	West Texas	Canyon TX	6 pm
Nov. 27	Eastern New Mexico	Portales NM	6 pm
Nov. 30	Univ. of Science & Arts OK	Chickasha	7 pm
Dec. 2	<b>Midwestern Texas</b>	<b>Weatherford</b>	<b>6 pm</b>
Dec. 4	<b>Tarleton State TX</b>	<b>Weatherford</b>	<b>6 pm</b>
Dec. 7	Texas Woman's Univ.	Denton TX	7 pm
Dec. 10-11	Orange & Black Classic	Langston	TBA
Jan. 6	Panhandle State OK	Goodwell	7 pm
Jan. 8	<b>Cameron OK</b>	<b>Weatherford</b>	<b>6 pm</b>
Jan. 13	<b>Northeastern OK</b>	<b>Weatherford</b>	<b>6 pm</b>
Jan. 15	<b>Univ. of Central OK</b>	<b>Weatherford</b>	<b>6 pm</b>
Jan. 20	Harding AR	Searcy AR	6 pm
Jan. 22	Ouachita Baptist AR	Arkadelphia AR	2 pm
Jan. 27	Southeastern OK	Durant	6 pm
Jan. 29	<b>East Central OK</b>	<b>Weatherford</b>	<b>6 pm</b>
Feb. 2	<b>Panhandle State OK</b>	<b>Weatherford</b>	<b>7 pm</b>
Feb. 5	Cameron OK	Lawton	6 pm
Feb. 10	<b>East Central OK</b>	<b>Weatherford</b>	<b>6 pm</b>
Feb. 12	<b>Southeastern OK</b>	<b>Weatherford</b>	<b>6 pm</b>
Feb. 17	Univ. of Central OK	Edmond	6 pm
Feb. 19	Northeastern OK	Tahlequah	6 pm
Feb. 24	<b>Ouachita Baptist AR</b>	<b>Weatherford</b>	<b>6 pm</b>
Feb. 26	Harding AR	Weatherford	2 pm

## 1999 Women's Soccer Schedule

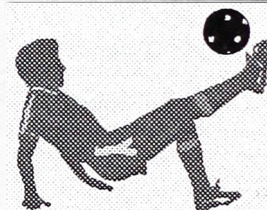


<u>Date</u>	<u>Opponent</u>	<u>Place</u>	<u>Time</u>
8-28	Northern OK College	W'ford	5 pm
9-1	St. Gregory's OK	W'ford	5 pm
9-7	Dallas Baptist TX	W'ford	2 pm
9-10	Tabor College KS	W'ford	5 pm
9-12	Missouri Southern	Joplin MO	1 pm
9-16	Southern Nazarene	W'ford	5 pm
9-24	Univ. of Central OK	Edmond	2 pm
9-25	Univ. of Central OK	Edmond	1 pm
9-28	Univ. of Sci. & Arts OK	Chickasha	2 pm
9-30	<b>Univ. of Central OK</b>	<b>W'ford</b>	<b>7 pm</b>
10-1	Univ. of TX-Dallas	Dallas TX	6 pm
10-5	West Texas	Canyon TX	4 pm
10-9	<b>Univ. of Sci. &amp; Arts OK</b>	<b>W'ford</b>	<b>5 pm</b>
10-15	Ouachita Baptist AR	Arkadelphia AR	2 pm
10-16	Harding AR	Searcy AR	2 pm
10-22	<b>Midwestern TX</b>	<b>W'ford</b>	<b>7 pm</b>
10-23	<b>Angelo State TX</b>	<b>W'ford</b>	<b>7 pm</b>
10-26	<b>Northeastern OK</b>	<b>W'ford</b>	<b>5 pm</b>
10-29	Texas A & M-Commerce	Commerce TX	4 pm
10-30	East Central OK	Ada	3 pm

## 1999-2000 Men's Basketball Schedule

<u>Date</u>	<u>Opponent</u>	<u>Place</u>	<u>Time</u>
Nov. 19-20	Tarleton Classic	Stephenville TX	TBA
Nov. 26	West Texas	Canyon TX	8 pm
Nov. 27	Eastern New Mexico	Portales NM	8 pm
Nov. 30	Panhandle State OK	Goodwell	TBA
Dec. 2	<b>Midwestern Texas</b>	<b>Weatherford</b>	<b>8 pm</b>
Dec. 4	<b>Tarleton State TX</b>	<b>Weatherford</b>	<b>8 pm</b>
Dec. 7	<b>Panhandle State OK</b>	<b>Weatherford</b>	<b>7 pm</b>
Dec. 10-11	Drury Tournament	Springfield MO	TBA
Dec. 14	Texas Wesleyan	Fort Worth TX	7:30
Jan. 8	<b>Cameron OK</b>	<b>Weatherford</b>	<b>8 pm</b>
Jan. 10	<b>Texas Wesleyan</b>	<b>Weatherford</b>	<b>7:30</b>
Jan. 13	<b>Northeastern OK</b>	<b>Weatherford</b>	<b>8 pm</b>
Jan. 15	<b>Univ. of Central OK</b>	<b>Weatherford</b>	<b>8 pm</b>
Jan. 20	Harding AR	Searcy AR	8 pm
Jan. 22	Ouachita Baptist AR	Arkadelphia AR	4 pm
Jan. 27	Southeastern OK	Durant	8 pm
Jan. 29	East Central OK	Ada	8 pm
Feb. 5	Cameron OK	Lawton	8 pm
Feb. 10	<b>East Central OK</b>	<b>Weatherford</b>	<b>8 pm</b>
Feb. 12	<b>Southeastern OK</b>	<b>Weatherford</b>	<b>8 pm</b>
Feb. 17	Univ. of Central OK	Edmond	8 pm
Feb. 19	Northeastern OK	Tahlequah	8 pm
Feb. 24	<b>Ouachita Baptist AR</b>	<b>Weatherford</b>	<b>8 pm</b>
Feb. 26	Harding University	Weatherford	4 pm
Feb. 29	Lone Star Conference Play-Offs		TBA

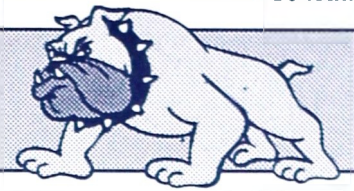
## Men's 1999 Soccer Schedule



<u>Date</u>	<u>Opponent</u>	<u>Place</u>	<u>Time</u>
8-28	Northern OK College	W'ford	7 pm
9-2	Bartlesville Wesleyan OK	W'ford	5 pm
9-4	Austin College	Sherman TX	2:30
9-7	Dallas Baptist TX	W'ford	4 pm
9-10	Tabor College KS	W'ford	7:30
9-12	Missouri Southern	Joplin MO	3 pm
9-16	<b>Southern Nazarene OK</b>	<b>W'ford</b>	<b>7:30</b>
9-20	Friends KS	Wichita KS	7 pm
9-23	OK Christian Univ.	OKC/Edmond	7 pm
9-28	Univ. of Sci. & Arts OK	Chickasha	4 pm
10-1	Univ. of TX-Dallas	Dallas TX	8 pm
10-5	West Texas	Canyon TX	6 pm
10-9	<b>Univ. of Sci. &amp; Arts OK</b>	<b>W'ford</b>	<b>7:30</b>
10-13	Southwestern College KS	Winfield, KS	6 pm
10-19	<b>OK City Univ.</b>	<b>W'ford</b>	<b>7 pm</b>
10-21	Midwestern TX	Wichita Falls, TX	7 pm
10-24	<b>Huston-Tillotson TX</b>	<b>W'ford</b>	<b>1 pm</b>
10-26	<b>Northeastern OK</b>	<b>W'ford</b>	<b>7:30</b>
11-4-6	Lone Star Conf. Tourney	Dallas TX	TBA



# Dawg Dates



## September

- 18 SWOSU Parent's Weekend
- 20 \*W.P. Kinsella-Fine Arts Center-7:30 pm



- 11 \*Robert Cialdini  
Fine Arts Center-7:30 pm
- 24-26 Thanksgiving Break



## October

- 1 Athletic Hall of Fame Banquet-Ballroom-6:30 pm
- 2 SWOSU All-Sports Reunion
- 2 SWOSU Homecoming
- 21-22 Fall Break
- 30 SWOSU vs. UCO-at Edmond-2 pm-SWOSU  
Tailgate Party-Noon
- 30 Miss Southwestern Scholarship Pageant-Fine Arts  
Center-7:30 pm



- 22 Christmas Break Begins



## January

- 3 SWOSU Spring Semester Begins
- 17 \*\*"The Meeting"-Fine Arts Center 7:30 pm



## February



- 10-11 SWOSU Jazz Festival
- 24 \*Terry Anderson-Fine Arts Center-7:30 pm

## March



- 13-17 Spring Break
- 17 St. Patrick's Day Metro Alumni Chapter  
Meeting-Bricktown Brewery OKC-7 pm
- 30 \*\*"Blues in the Night" Arkansas Repertory  
Fine Arts Center-7:30 pm



## November

- 1 \*Alex Bruni & Leonid Ogrinchuk-Fine Arts  
Center-7:30 pm
- 2 SWOSU Metro Night-Omniplex OKC-7 pm
- 6 SWOSU vs. East Central OK-Weatherford  
2 pm-Tailgate Party-Noon



\* Panorama Events

## Alumni office searching for yearbooks



The Southwestern Alumni Office keeps at least one copy of the yearbook from each year. Unfortunately, there are a few books that we do not have.

If anyone would like to donate a book, please contact the Alumni Office at (580) 774-3267.

*These years are needed:*

**1914 1918  
1931 1974**



## 9 Football Schedule

DATE	OPPONENT	PLACE	TIME
Sept. 4	Adams State CO	Weatherford OK	7 pm
11	Tarleton TX	Stephenville TX	7 pm
18	*West Texas A&M	Weatherford OK	7 pm
25	Abilene Christian TX	Abilene TX	7 pm
Oct. 2	**Ouachita Baptist AR	Weatherford OK	2 pm
9	OPEN		
16	Southeastern OK	Durant OK	2 pm
23	Northeastern OK	Weatherford OK	3:30 pm
30	***Univ. of Central OK	Edmond OK	2 pm
Nov. 6	***East Central OK	Weatherford OK	2 pm
12	Harding AR	Searcy AR	2 pm

\*Parent's Weekend

\*\*\*Tailgate Party

\*\*Homecoming



# WE WANT YOU!

*Dues paid after August 31, 1999  
extend from Jan. 1-Dec. 31, 2000.*

Southwestern Oklahoma State University Alumni Association needs your help and support. We are more active and promoting more activities for the good of Southwestern. We have a progressive group of officers and Board of Directors. The Alumni Association helps promote and assist university academic projects, aids in student recruitment, sponsors homecoming events, parents' weekend, tailgate parties and alumni golf tournaments, in addition to many more endeavors. In the future, our goal envisions establishing alumni chapters, implementing a placement service and establishing an alumni center.



## 2000 SWOSU Alumni Membership Card

Name \_\_\_\_\_ Phone \_\_\_\_\_

Address \_\_\_\_\_

**YOU**

**SPOUSE**

Name \_\_\_\_\_ Name \_\_\_\_\_

Occupation/title \_\_\_\_\_ Occupation/title \_\_\_\_\_

Employer \_\_\_\_\_ Employer \_\_\_\_\_

Employer's address \_\_\_\_\_ Employer's address \_\_\_\_\_

Degree(s) (BS, BA, MS, etc) \_\_\_\_\_ Degree(s) (BS, BA, MS, etc) \_\_\_\_\_

Major \_\_\_\_\_ Major \_\_\_\_\_

Graduation year(s) \_\_\_\_\_ Graduation year(s) \_\_\_\_\_

100 Campus Drive

Weatherford, OK 73096

(580- 774-3267)

[www.swosu.edu](http://www.swosu.edu)

### Membership Options:

- Yearly: \$25
- Lifetime Single: \$400
- Lifetime Couple: \$500

Check payable to **SWOSU Alumni** is enclosed

- 
- VISA
- Mastercard

Card # \_\_\_\_\_

Exp. date \_\_\_\_\_

Cardholder's signature \_\_\_\_\_

SWOSU Alumni Association  
100 Campus Drive  
Weatherford OK 73096-3098

E1916

Nonprofit Organization  
U.S. Postage  
Paid  
Weatherford, OK 73096  
Permit 57