

THE ANALYSIS IN THE TERRITORIAL PROFILE OF THE YOUTH UNEMPLOYMENT FROM THE NORTH-EAST REGION OF ROMANIA

Iulian CONDRATOV

Stefan cel Mare University of Suceava, 720229, Romania

iulianc@seap.usv.ro

Abstract

Through this study we wanted to realise an analysis that allows the identification of the areas of high risk , respectively of those of low risk, concerning the youth unemployment from the North-East part of Romania. In order to identify these risk areas we used the method of local spatial autocorellation named "LISA univariate" (Local spatial autocorellation – with a single variable).The analysis pointed up the fact that at the regional level, it can be identified areas of both high and low risk of the youth unemployment, but, with some exceptions, these areas have a temporary/transitory charcater in the sense that from one period to another the method indentified modifications of bordering the localities in the two categories.

Key words: *North-East Region of Romania; territorial analysis; LISA univariate; unemployment; youth.*

JEL Classification: *J1; J2.*

I. INTRODUCTION

Having as a starting point the conclusion of Niebuhr (2003) according to which " the regions charcaterised by a high level of unemployment, respectively those charcaterised by a low level of unemployment, tend to gather geographically" we proposed an intra-regional analysis regarding the disparities of the unemployment at the level of the North-East Region.

The objective of this analysis pointed the identification of the most underprivileged areas concerning the unemployment among young people from the North-East Region.

The georphic factor is important (the geographic position of the locality and its neighborhood) and it can simplify the explanation of the persistence of some phenomens:

- Negative - that charcaterise the underprivileged areas, with a persistence of the unemployment, areas that show the ineffectual use of the human resource, an economic activity with problems, high risk for the failure of the politics used to fight the unemployment and rise the occupancy;
- Positive – that characterise the areas with big competitiveness (in the sense of low unemployment and as a result with a big probability of having a high level of occupancy), with economic rising potential, areas with concentrations, knots with low level of unemployment, areas that indicate an efficient use and allocation of the human resource, charcaterised by an economic intense activity, with good socio-economic performances and with a high level of competitiveness.

II. METHODOLOGY

For characterising the phenomens from the work force market from Romania, two series of statistic dates are used:

- Dates from the Balance work force
- Dates from the inquiry on the work force in housekeepings realised by the National Institute of Statistics

The balance work force allows the building of some indicators comparable in time, at national and territorial level (regions of development and counties).

The inquiry on the work force in housekeepings assures the comparability in time, at national level, territorial (regions of development) and international.

The main statistic indicators that are built on the two series of dates are:

- The active population with two components:
 - The occupied population
 - The unemployment
- The unactive population

The statistic indicators from the two series are not comparable because the collecting methods, the periods of reference and the inclusion sphere are different.

The balance work force

Based on the dates from the balance work force, it is established, yearly, at national and regional level the civil active population formed from:

- The occupied civil population
- The registered unemployed

The registered unemployed – represent people who, according to the Law no. 7672002 with the further modifications and completions, are registered at the National Agency for the Work Force Occupancy and accomplish cumulatively the following conditions:

- a) have the age between 16 years and the legal age of retiring
- b) are searching for a job
- c) the health, the physic and psychic capacities make them able to work
- d) do not have a job, do not realise incomes or they realise smaller incomes than the minimum salary of the country, certified in payment, in force
- e) are available to start work immediately if a job would be found

The registered unemployed defined previously are people who are in the evidence of the National Agency for the Work Force Occupancy and who are provided with the law anticipations regarding the unemployed's social protection.

The civil active population includes the occupied civil population and the unemployed.

The civil occupied population includes all the people who have a job that provides them incomes, a job that they practice regularly in one of the national economic activity, being bordered in an economic or social activity, based on a work contract or independently (on his own) in order to obtain incomes as salaries, payment in goods etc.

The inquiry on the work force in housekeepings realised by the National Institute of Statistics

The dates from the inquiry on the work force in housekeepings are used for determining the total active population, that includes:

- The total occupied population
- The unemployed defined according to the recommendations of the International Work Department

The unemployed are, according to the International Work Department, people who are older than 15 years and who accomplish cumulatively 3 conditions:

- ✓ They don't have a job
- ✓ They are looking for a job, using during the last 4 weeks (inclusively the reference week) different methods to find it (registering at the level of the public or private agencies for the work force occupancy, attending interviews for hiring, using websites for searching available jobs, asking for support to the family or friends in finding a job, undertaking actions for starting a business on his own etc.)
- ✓ They are able to start work in the next 2 weeks (inclusively the week when the interview took place), if a job could be found immediately.

The identification method of the underprivileged/competitive areas concerning the unemployment among young people from the North-East Region uses instruments of spatial analysis implemented within the informatic program GEODA Anselin.

The problem of the spatial dimension of the unemployment is treated by the speciality literature recently and it is based on the following aspects:

- The geographic/spatial concentration - Alonso-Villar O, Del Rio C (2008)
- The concentration and the spatial disparities of the unemployment - Suedekum J. (2004)
- Persistence, factors and rethinking of the regional politics - Chisholm M. (1976)
- Convergence/Divergence of the regional disparities - Marshall (1920), Krugman (1991)
- Overman and Puga (2002) present empiric evidence of the spatial effects of the unemployment at the level of the European regions and countries.

Areas are identified due to the analysis of the local spatial autocorrelation named "LISA univariate" (Local spatial autocorrelation – with a single variable):

[A] underprivileged areas determined by the big number of unemployed – named within this theory locations of HH type (High-High)

[B] competitive areas determined by the low number of unemployed – named within this theory locations of LL type (Low-Low). (Lincaru & Ciucă, 2012)

The underprivileged area is determined by the existence of at least one location that accomplishes the condition of locality with a big number of young unemployed (15-24 years) and it is bordered by localities with a big number of young unemployed – this locality being also called the center of the cluster.

The competitive area is identified by the area found between the localities that are characterised by a low level of the number of young unemployed (15-24 years). These localities are neighbors, adjacent and so they compose formations named clusters.

Referring to the limits of applying this analyse, we must mention the following aspects:

- The univariated analysis masks the influences of other factorial variables that contribute to the manifestation of the geographic disparities of the unemployment;
- The approximations realised in order to obtain input dates (work dates) and which are detailed further.

III. DATES AND INDICATORS USED IN THE IDENTIFICATION OF THE UNDERPRIVILEGED AREAS FROM THE NORTH-EAST REGION

The work dates used within the informatic program GEODA Anselin represented the number of the unemployed from the age category 15-24years (number of requited unemployed + number of unrequited unemployed) at the locality level in the evidence of the National Agency for the Work Market Occupancy.

The statistic dates in this way are not available in public sources (the statistic situations published by the National Institute of Statistics or those published by the National Agency for the Work Market Occupancy), so it was necessary to undertake the following approximation procedure of the mentioned dates:

- From the date base Tempo updated by INS I have taken the information related to the number of the unemployed registered at the end of January 2014 and at the end of October 2014 for 552 localities (municipalities,cities and villages) from the North-East Region.

- For being able to estimate the proportion of the unemployed for each locality, I have used from the site of the National Agency for the Work Market Occupancy dates related to the total number of unemployed and the number of unemployed aged under 25 years for each one from the 6 counties of the region. I considered the proportion of unemployed under 25 years totally number of unemployed/county equally distributed at the level of each locality of the given county.

Taking into consideration the fact that the geographic position can be an influence factor, by the dynamic analysis of the variation of the identified centers in October 2014 in regard to the identified centers in January 2014, then the underprivileged areas can be validated if they are "active in October 2014 and active in January 2014", according to the following typology:

- old = "active in January 2014 and unactive in October 2014 ",
- constant = "active in January 2014 and active in October 2014 ",
- new = "inactive in January 2014 and active in October 2014 ".

IV. THE RESULTS OF THE ANALYSIS

From the territorial distribution of the unemployment registered on October 31, 2014 in the North-East Region, it can be observed that the major part of the localities present a number of the young unemployed smaller than the 50 people. The most localities that present a very small number of unemployed , less than 10 people, can be found in Iași city – 62 localities, Neamț city - 60 localities and Botoșani – 58 localities.

Bigger amounts,100 – 250 people in the localities around Suceava municipality (Mazănești, Ciprian Porumbescu, Scheia, Todirești, Arbore, Mariței, Grănicești).

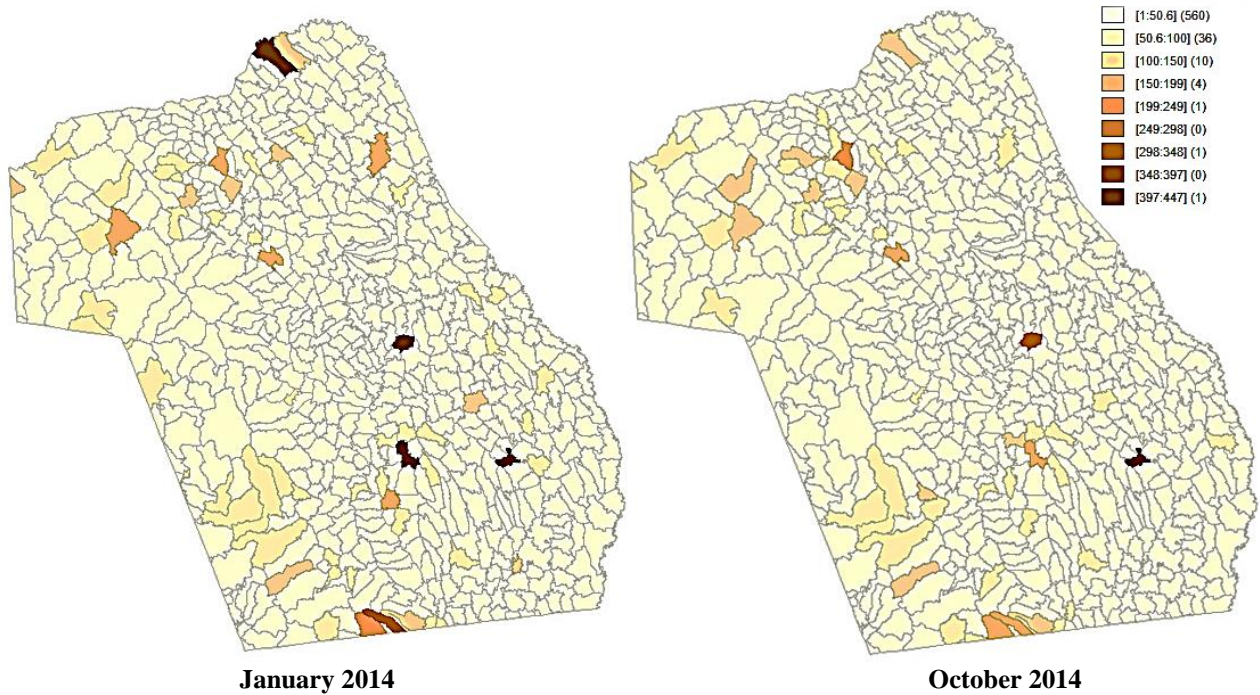


Figure 1- The distribution of the unemployed aged between 15-24 in January 2014 and October 2014
The source : Eurostat, the author's accounts

Comparing to the situation registered in January 2014, the situation doesn't modify very much at the locality level, but at the level of some localities from Botoșani, Iași și Vaslui we can observe attenuations of the unemployed's number from the age category 15-24 years.

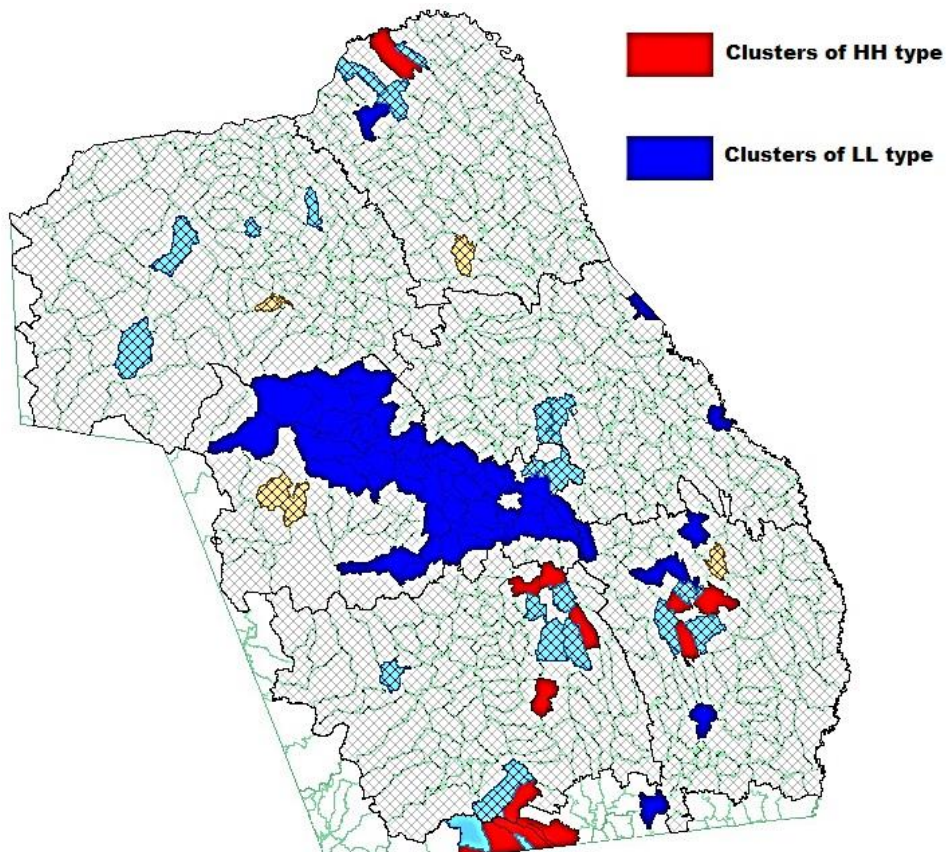


Figure2 - Clusters of HH and LL type for the period January 2014
The source : Eurostat, the author's accounts

The analysis of the clusters identified using the method of Local spatial autocorrelation – with a single variable for the period January 2014 shows the presence of a corellation of the high rates of the unemployment among young people in Bacău și Vaslui, very close to the common border area of the cities and in the North region of Botoșani county. There are no clusters of HH type in the area of Suceava, Iași and Neamț.

On the other hand, there are more clusters of LL type, fact that shows the corellation of the low rate of the unemployment, specially in Neamț and Iași. From the dimensional perspective of the LL type clusters it can be observed that Neamț presents, in January 2014, a bigger concentration of localities having a low unemployment.

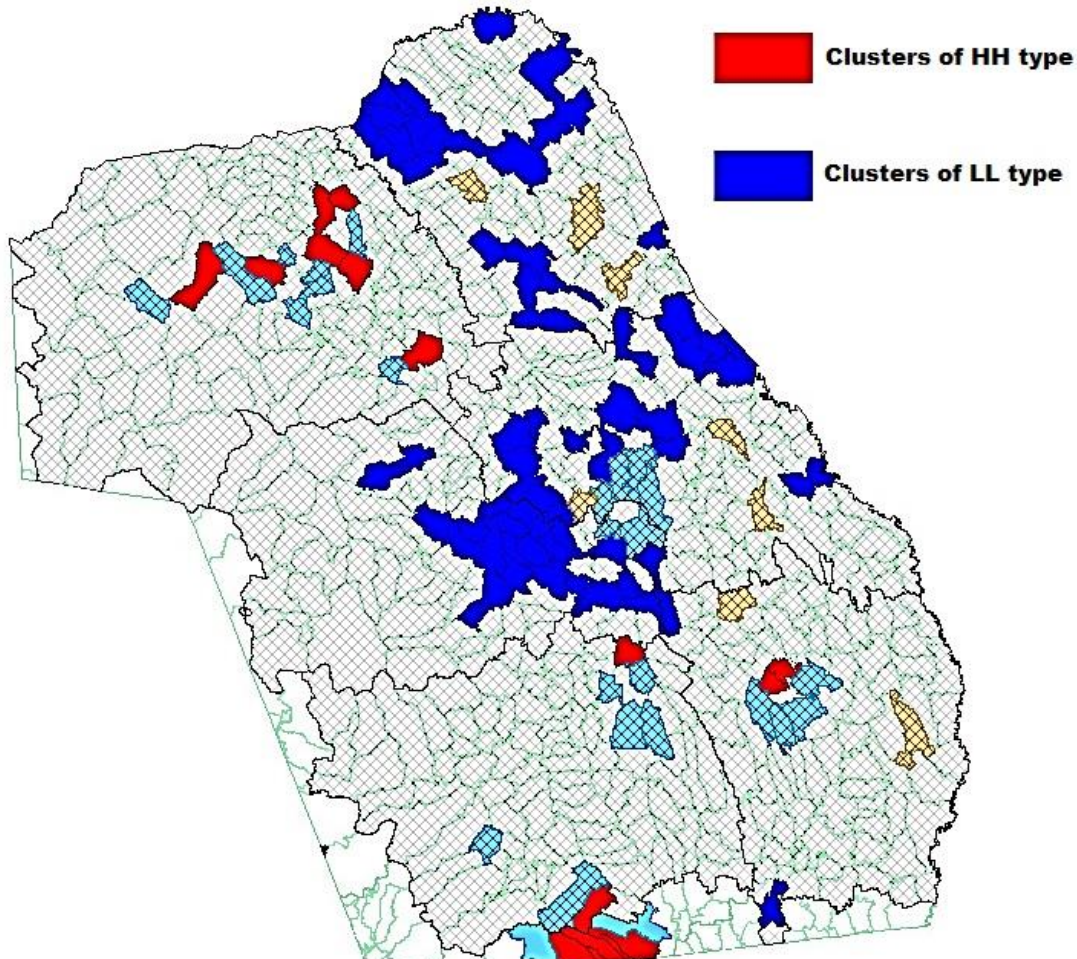


Figure3 - Clusters of HH and LL type for the period October 2014

The source : Eurostat, the author's accounts

Making a comparison to the clusters distribution in the period October 2014, in regard to January 2014, it can be observed a migration of the clusters position, fact that emphasizes the transitory character of the unemployment for the population aged between 15-24 years.

In October it can be observed the activation of some HH type clusters in Suceava, in its central part, and sometimes there are active clusters found in January 2014 in Bacău and Vaslui.

Also, as a constant of the period January 2014 – October 2014 it can be found the LL type cluster existent at the border of Neamț and Suceava cities.

Unexpected, in October it can be observed the activation of a LL type cluster in the area of Dorohoi municipality from Botoșani city.

V. CONCLUSIONS

The undertaken research aimed the identification of some risk areas regarding the unemployment for the age group 15-24 years through an analysis in territorial profile.

From the territorial distribution of the unemployment registered for the age group 15-24 years on October, 31 2014, for the North-East Region, it could be emphasized that the most localities present a number of young unemployed smaller than 50 people. The most localities with a very low number of unemployed, less than 10 people are found in Iași city – 62 localities, Neamț city - 60 localities and Botoșani – 58 localities.

The analysis of the clusters identified using the method of Local spatial autocorrelation – with a single variable for the period January 2014 indicated the presence of a correlation of the high rates of the unemployment among young people in Bacău și Vaslui, very close to the common border area of the cities and in the North region of Botoșani county. However, the activation of these clusters proved to be temporary excepting some localities. There were no clusters of HH type in the area of Suceava, Iași and Neamț.

From the perspective of the clusters determined by the small number of unemployed it could be emphasized their persistence in the border area of Neamț and Iași cities.

Taking into consideration the approximations realised in order to undertake this analysis, the achievement of an inquiry proves to be necessary regarding the work force occupancy for the localities from the North-East part, fact that allows a better evaluation of the existent number of unemployed.

VI. ACKNOWLEDGMENT

This paper has been financially support ed within the project entitled „SOCERT. Knowledge society, dynamism through research”, contract number POSDRU/159/1.5/S/132406. This project is co-financed by European Social Fund through Sectoral Operational Programme for Human Resources Development 2007-2013. Investing in people!”

VII. REFERENCES

1. Annekatrin Niebuhr (2003) Spatial Interaction and Regional Unemployment in Europe, *European Journal of Spatial Development*, ISSN 1650-9544, no 5 <http://www.nordregio.se/global/ejsd/refereed%20articles/refereed5.pdf>
2. Contini, B. (2010). Youth Employment in Europe: Institutions and Social Capital Explains Better than Mainstream Economics,. Discussion Paper(4718).
3. Dietrich, H. (2012). Youth Unemployment in Europe - Theoretical Considerations and Empirical Findings. Berlin: Friedrich-Ebert-Stiftung.
4. Gomez-Salvador, R. L.-K. (2008). An analysis of youth unemployment in the euro area. Occasional Paper series - European Central Bank, 89.
5. Heckman, J. L. (1999). The economics and econometrics of active labour market programs, in: Ashenfelter, O. and Card D. (eds.), *Handbook of Labour Economics*, Vol. 3. Amsterdam: Elsevier.
6. ILO. (2013). *Comparative Analysis of National Skills Development Policies: A Guide for Policy Makers*. Pretoria: International Labor Office.
7. ILO. (2013). *Global Employment Trends for Youth 2013: A Generate at Risk*. Geneva: International Labor Office.
8. Levine, L. (2011). Implications of the Anti-Poverty Program for Education and Employment, *Vocational, Guidance Quarterly*. 14, pg. 8-18.
9. Lincaru, C., Ciucă, V. (2012). The geographical distribution of unemployment at localities desegregation level case study for South Muntenia Region - Romania.
10. Neumark, D. W. (2004). Minimum wages, labour market institutions and youth employment: a cross-national analysis. *Industrial and Labor Relations Review*, 57(2), 223-248.
11. Perugini, C. S. (2010). Youth labour market performance in European regions. *Economic Change and Restructuring*, 43(2), 151-185.
12. Verick, S. (2009). Who Is Hit Hardest during a Financial Crisis? The Vulnerability of Young Men and Women to Unemployment in an Economic Downturn. IZA Discussion Paper(4359).
13. Agenția Națională pentru Ocuparea Forței de Muncă. (2014, Decembrie). Statistici. Preluat de pe <http://www.anofm.ro/category/1/3/12/148>
14. Arizona State University. (2014, Decembrie). The GeoDa Center for Geospatial Analysis and Computation. Preluat de pe <https://geodacenter.asu.edu/>
15. INS. (2014, Decembrie). Baza de date TEMPO. Preluat de pe <http://statistici.insse.ro/shop>