

NORTH GEORGIA COLLEGE



3 0642 00152 7251



W. H. CROFTS  
1906







# *The Cyclops*



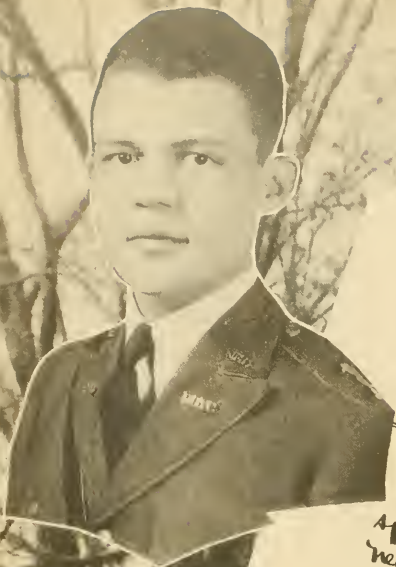
1936

PRESENTED BY  
THE STUDENT BODY  
OF THE

*North Georgia College*

*Dahlonega, Georgia*





JOHN MANLEY EDITOR

# The CYCLOPS

Yearbook of the North Georgia College  
DAHLONEGA, GEORGIA

W. J. LIDDELL, BUSINESS MANAGER

Fellow Students —

19  30

The past few months which we have happily spent with our Alma Mater have brought many new and interesting episodes into our lives. The memory of some will mellow with age, while others because of their triviality we may forget. In order that we may never forget these old familiar scenes and faces, we have made an earnest effort to vividly portray our Campus life from every angle. May you, in years to come, glean through these pages which have been rather hastily compiled under the stress of College life and reminisce happily the by-gone days at N.G.C. We offer this edition to the students, not with entire confidence, but nevertheless with the feeling that they will not regard our efforts as altogether unworthy of this great institution the Cyclops represents —

Sincerely —  
J. B. Manley,  
W. J. Liddell





*John Durham Anthony*

DEDICATED TO

PROFESSOR JOHN DURHAM ANTHONY

Sound scholar and skillful teacher in his chosen field of science. Many students have profited from contact with his powerful and independent personality, and have caught from him glimpses of the satisfaction to be had from the pursuit of learning. He possesses a refreshing open-mindedness towards the changing standards of our modern complex civilization. Professor Anthony is a liberal in the truest and best sense of the term.

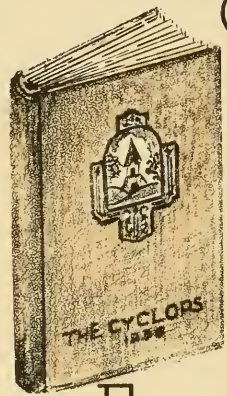
FEATURES



SOPHOMORES



COLLEGE



MILITARY

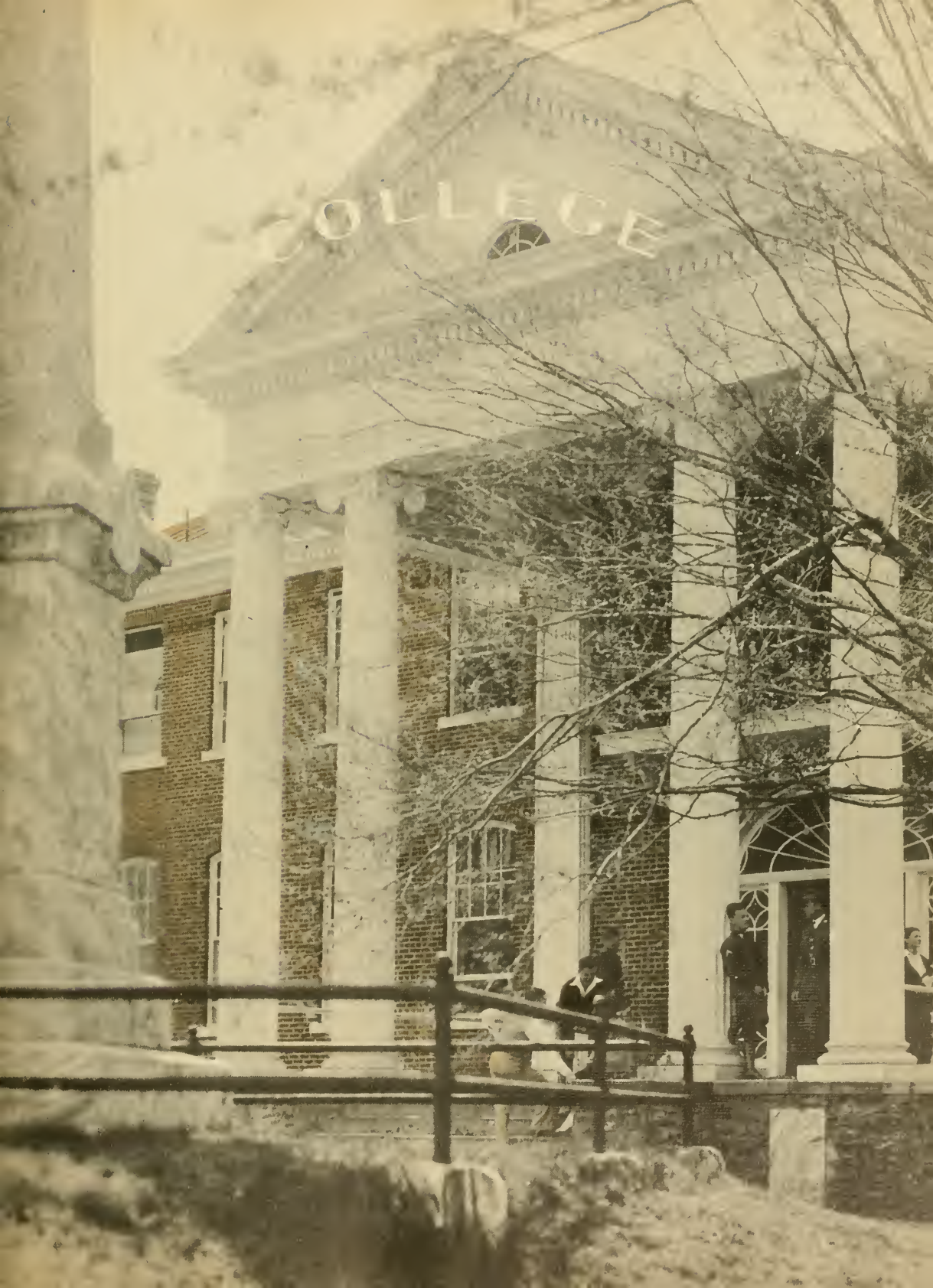


FRESHMEN



ATHLETICS







OFFICE OF THE REGISTRAR

University System of Georgia  
**North Georgia College**  
Dahlonega, Georgia

North Georgia Friends:

A leading Georgia educator recently referred to North Georgia College as the "most promising of the state's junior colleges." My greeting to the Editors of the 1936 CYCLOPS and to the students and faculty in general is, therefore, an appreciation of their united efforts to build an institution worthy of such a tribute.

May this estimate of the College be accepted also as a challenge to greater growth and service to the State and College.

Sincerely

May 1, 1936





F. ANGELSBURG  
Director of the Band



J. D. ANTHONY, B.S., M.A.  
Professor of Biology



NINA AULTMAN  
Secretary



J. C. BARNES, B.S.  
Professor of Mathematics

# FACULTY



W. D. BOOTH, B.S., M.A.  
Assistant Professor of English



M. I. BOWMAN, A.B., M.S.  
Assistant Professor of Science and  
Mathematics



MRS. W. E. BROACH  
Instructor in Home Economics



P. D. BUSH, B.S., A.M.  
Professor of English



ANDREW W. CAIN, A.B., A.M.  
Professor of Social Science



CAMILLUS J. DISMUKES,  
A.B., M.A.  
Professor of French





CAPT. KIRBY GREEN,  
Inf. (D.O.L.)  
Professor of Military Science and  
Tactics



P. M. HUTCHERSON, B.S.C.  
Captain O.R.C., Commandant



L. B. FREEMAN, B.S.C., M.S.C.  
Assistant Professor of Social  
Science



SGT. R. S. McCONNELL  
Inf. (D.E.M.L.)  
Assistant Professor Military Science  
and Tactics



LUCY MONDAY  
Dean of Women



THOMAS S. LOGAN,  
B.S., M.S., Ph.D.  
Professor Physical Science and  
Chemistry



JOSEPHINE STROTHER, A.B.  
Librarian



R. W. STEPHENS, A.B.  
Coach of Athletics



J. C. SIMMONS, Ph.B., M.A.  
Professor of Education  
Registrar





SAPHOMORPHS



LIDDELL



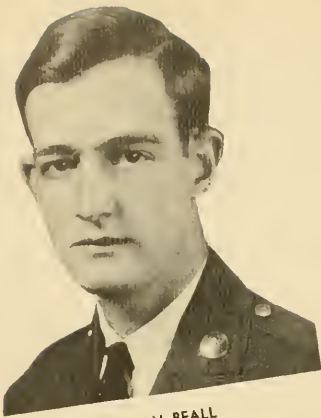
BOWERS



BURCH

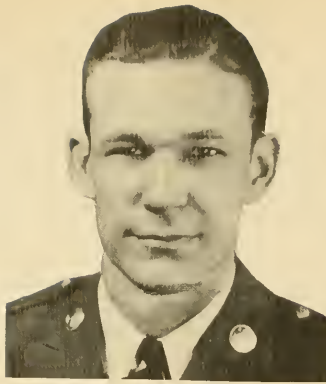


BURT



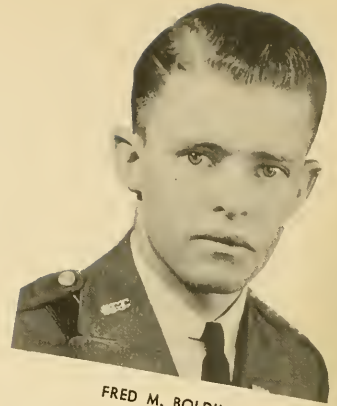
**NORMAN BEALL**  
MOULTRIE, GEORGIA

Sigma Theta 1, 2; Corporal "B" Company, 2. "Tinker" carried his Company Colors well on the drill field this year, and came through with his own flying high at Brenau. Being the shrewd sort of chap he is, he has learned not to settle down to any "one" yet and may the best of magazines always be at hand for him.



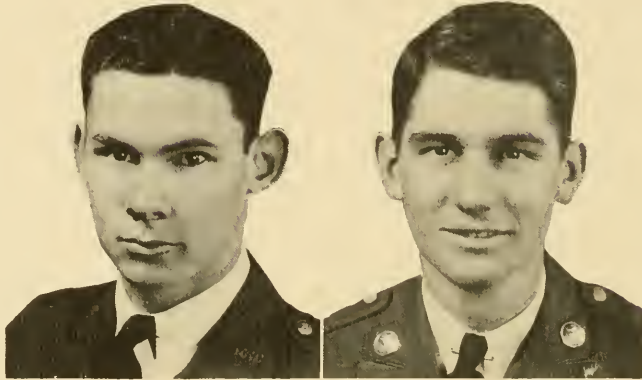
**TOM NEESE BOGGS**  
DANIELSVILLE, GEORGIA

Sigma Theta, 1, 2, Vice-President, 2; Secretary and Treasurer Sergeants' Club, 2; Orchestra, 1, 2; Glee Club, 1, 2; Quartet, 1, 2; Sergeant Band, 2. Behold! A budding soloist and romanticist. Besides having distinguished himself as a popular student "Tommy" has found it possible to shiver in the "Lonoga snows and bask in the Florida sun (or daughter) at the same time.



**FRED M. BOLDING**  
CALHOUN, GEORGIA

Sigma Theta, 1, 2, Secretary, 2; Musketry Team, 1; Officers' Club, 2; Dramatic Club, 1, 2, Vice-President, 2; Captain, 2. Adjutant "Freddie" is a sure-hit, though his one vice is women. Hang on to that personality, learn the "pull" of dentistry, and learn to treat women with an indifference and you're sure to "hit a homer."



**MELL E. BOOTH**  
ADEL, GEORGIA

Sigma Theta Pledge, 1, 2; Officers' Club, 2; Glee Club, 1, 2; Orchestra, 1, 2; 2nd Lieutenant Band, 2. Mell could never have made the popular hit which he has made on the campus without his original wit and characteristic "top hats." We predict this accomplished musician will go places and get things.

**WILLIAM R. BOWERS, JR.**  
TOCCOA, GEORGIA

Rex, 1, 2, President, 2; Y. M. C. A., 1, 2, President, 1; Secretary Freshman Class; Vice-President Sophomore Class; President Sergeants' Club, 2; Speech Forum, 2; Glee Club, 2; BUGLER Staff, 2; Decora, 1; Dramatic Club, 1, 2, President, 2; 1st Sergeant Band, 2. The best "all-round" fellow on the campus! Listing his activities seems to be "nuf sed."

**JAMES R. BRAY**  
CRAWFORD, GEORGIA

Band, 1, 2.

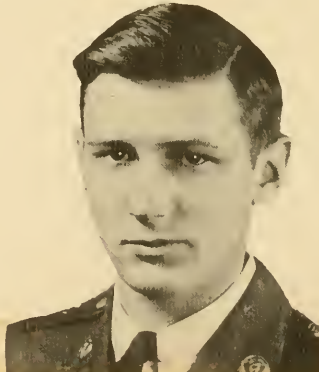
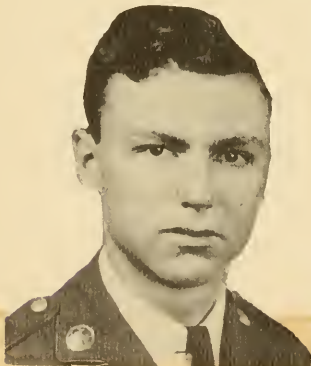
If hard work and industriousness are the gospel of progress then Roy knows the gospel. He's one of the quietest—yet best natured and cheerful men in school. If "putting out" gets a guy places—he's practically there.

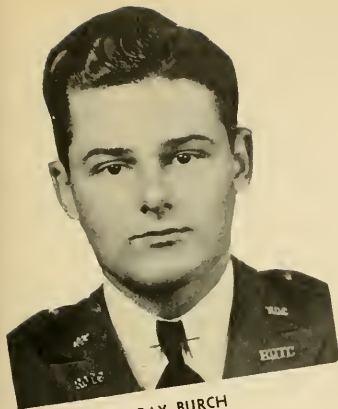
**JOE E. BROWN**  
TRION, GEORGIA

Y. M. C. A. Cabinet, 2; Corporal "A" Company, 2. If you ever see a quiet reserved dome on the bench in some future courtroom, look twice—it may be Judge Joe E., our quiet philosopher who has diligently spent every extra moment in furthering his education. He is bound for a successful career; Bon chance, Joe E.

**CLYDE E. BRYAN**  
TIFTON, GEORGIA

Sigma Theta Pledge, 1, 2; Company "A", 1, 2. Clyde's first quarter here was one of silence, though after getting his vocal box in tune, his penetrating voice will never be forgotten on L. H. U. S. The "Deacon" has settled down this year with the hopes of soon "settling down," and the best we can wish for him is success in his future endeavors.



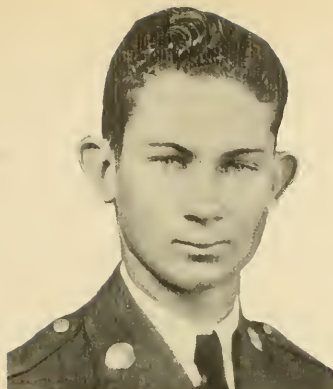


**GRAY BURCH**

FAYETTEVILLE, GEORGIA

Rex, 1, 2; Y. M. C. A., 1; Rifle Team, 1; Musketry Team, 1; CYCLOPS Staff, 2; Officers' Club, 2; "D" Club, 1; Basketball Manager, 1; First Lieutenant "B" Company, 2.

"Quiet and Reserved" is descriptive of "Lieut. G. G." within itself. He goes in for tennis, military, and—you guessed it—women! In saying "farewell," we can only hope that he will hold the respect of people outside as he has here at 'Lonega.



**KRESS BURRELL**

MARBLE HILL, GEORGIA

Rex, 1, 2; Y. M. C. A., 1; Glee Club, 1; Decora, 1; BUGLER Staff, 1; Company "B," 1, 2.

"K. B." came to us as an innocent little North Georgian, from the "marble hills." College has broadened his personality, and his individuality has attracted many friends. Only a chosen few can master "Little Red Riding Hood" as eloquently as can "K. B."

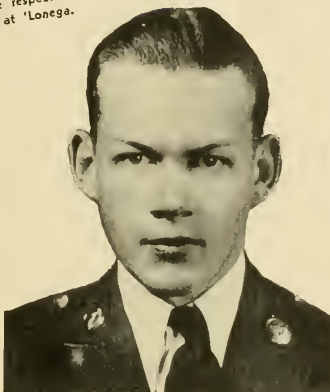


**BILLY BURT**

CAMILLA, GEORGIA

Rex, 1, 2, Secretary, 2; Y. M. C. A., 1; Treasurer Sophomore Class, 2; Speech Forum, 1, 2; Dramatic Club, 1, 2, Vice-President, 2; Decora, 1; BUGLER Staff, 1, 2; Sergeant "A" Company, 2.

Billy is one of the best natured and most likeable chaps on the campus. His slow wit and drawing mannerisms have brightened many bull sessions and have endeared him in the hearts of us all.



**LORENZO "DUCKY" CARLTON**

UNION POINT, GEORGIA

Sigma Theta, 1, 2; President Corporals' Club, 2; Corporal "B" Company, 2.

"Ducky" in his friendly, dignified manner has left an indelibly written record as a good student, friend and soldier. Napoleon, too, was a little man.



**SARA CARLTON**

HARTWELL, GEORGIA

Corona, 2; Piedmont, 1.

"Speak clearly, if you speak at all; Carve every word before you let it fall."

Although a newcomer this year, Sara has won a place with her quiet manner, and sweet ways. With these characteristics she can't miss success.

**GEORGE R. CHAMBERS**

RANGER, GEORGIA

Y. M. C. A., 1, 2; Corporals' Club, 2; Corporal "B" Company.

George's two-year evolution has been an interesting process to watch. From the quiet, timid soul has emerged a well-rounded college career, capable of holding the esteem and respect of all his associates. Best of luck, Chambers!

**LEONARD CLARKE**

HARTWELL, GEORGIA

Rex, 2; Sergeants' Club, 2; Staff Sergeant, 2.

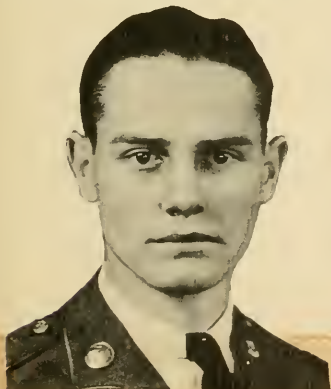
"Clarke" has carried the Regimental Colors well this year, besides establishing himself as an accomplished barber. Though rather quiet and "gal-shy" his Freshman year, he has broken from ranks this year and has fallen hard. Just "Klip" up the good work ole boy, we're for yuh!

**ALINE COUCH**

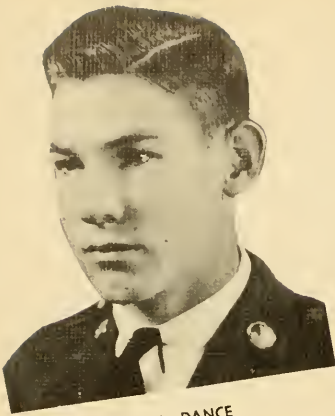
DOUGHERTY, GEORGIA

"Kindness—nobler ever than revenge."

This axiom is typical of Aline's quiet and reserved ways. She has been a good and loyal student.







**SAM A. DANCE**

**EATONTON, GEORGIA**

Rex, 1, 2; Rifle Team, 1, 2; "D" Club, 2; Sergeants' Club, 2; Staff Sergeant, 2; Basketball Manager, 2. In Sam we find one of the best marksmen in the battalion—and a sure-shot personality, too. This engaging personality and strength of character argue well for a bright future.



**CLARK M. DAVIS**

**GRIFFIN, GEORGIA**

Sigma Theta, 1, 2; Rifle Team, 2; Sergeants' Club, 2; Glee Club, 2; Decora, 1; Sergeant "A" Company, 2. "Skinny" is one of those versatile chaps who seems able to do everything well. He has a keen mind, weakness for G. S. C. W. and a swell personality. "C. M." proved to be a necessity for the successful trips taken by "Booth's Song-birds" (as was the case with Brenau). It is such instances as this that will cause us never to forget him.



**KATE DILLARD**

**DILLARD, GEORGIA**

**Piedmont College, I.**

"You cannot do wrong, and feel right."  
Kate's friendly disposition and love for a good time have won her many friends.



**ALICE GRACE DRISKELL**

**GAINESVILLE, GEORGIA**

"Howe'er it be, it seems to me,  
'Tis only noble to be good."

Grace is a quiet and friendly girl. Her unchanging ways and aptness for books makes her a model student.



**BILLY EVANS**

**BARTOW, GEORGIA**

Sigma Theta, 1, 2; Orchestra, 1, 2; Bugler, 2; Corporal Band, 2.

Despite his quiet and casual manner, Billy could "call" every morning during the year and have the whole battalion respond "pronto." His talent and musical ability is an asset and have helped him achieve his likeable qualities.

**CHARLES WILLIAM FIELDS**

**ROCKY FACE, GEORGIA**

Rex, 1, 2; Rifle Team, 1, 2; Officers' Club, 2; Speech Forum, 1; Glee Club, 1, 2; Dramatic Club, 1, 2; "D" Club, 1, 2; Basketball Manager, 2; Baseball Manager, 2; Staff Lieutenant, 2.

In "Top" the Class of '36 has a great personality. Though his witicism and tall tales have rather quietly subsided since Lady Luck snatched from him the "one and only." Charley is just marking time 'til he can get through Kelly Field and can march up to the altar and hear her say—"I do!"

**LOUIS J. FOWLER**

**STONE MOUNTAIN, GEORGIA**

Y. M. C. A., 2; Corporals' Club, 2; Corporal "B" Company, 2.

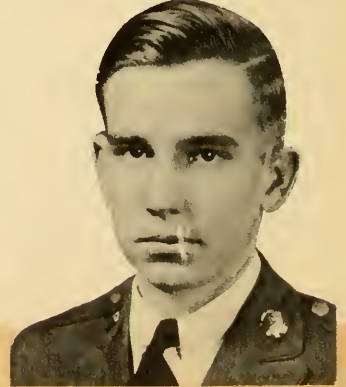
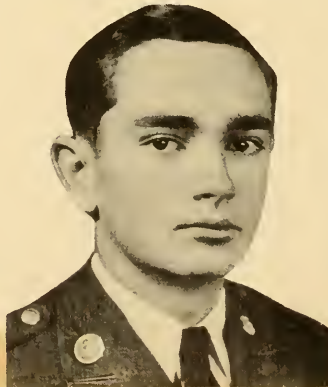
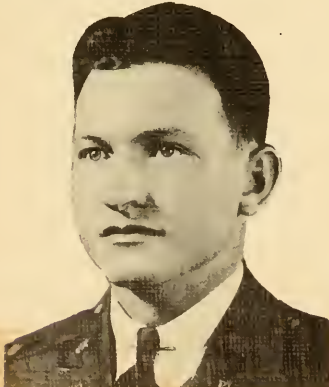
"Silence is Golden," and "Brevity is the Soul of Wit," are two maxims which may well be applied to Louis. His lack of interest in the weaker sex gives him more time for his books which helps explain his high academic ratings.

**HORACE FUNDERBURK, JR.**

**BAINBRIDGE, GEORGIA**

Y. M. C. A., 2; Musketry Team, 1; Sergeants' Club, 2; Sergeant "B" Company, 2.

In our educated "circles" it is generally conceded that Horace has the "stuff" it takes, and he has won the esteem and respect of even our inimitable "Daddy" Barnes. His superior qualities have made for him many friends who wish him the best of luck.

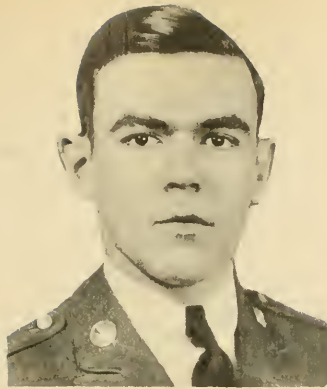






**HATTIE GRACE GARRETT**  
GAINESVILLE, GEORGIA

"Let gentleness my strong enforcement be."  
Hattie has a genial disposition and is one of our most loyal students. We look for her to succeed.



**BEN GAY**  
MADISON, GEORGIA  
Company "A," 1, 2.

Ben's quiet and retiring nature (forgetting that he put the fire in our fire-cracker escapade) has helped him live up to that old adage, "earning while learning;" and has helped him make some real friends while here.



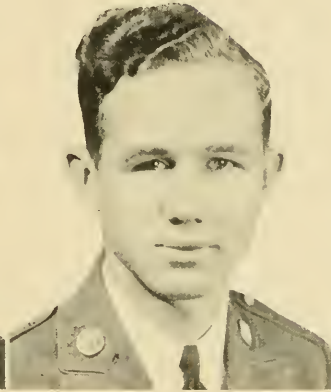
**JOHNNY RUTH GLASS**  
CAMPTON, GEORGIA  
Y. W. C. A., 1, 2; Corona, 1, 2; Home Economics Club, 2.

"Whatever happens, I want to be,  
Self-respecting and conscience free."  
Johnny is always a good sport, so cheerful in all her undertakings.



**TROY H. GUTHRIE**  
MORGANTON, GEORGIA

Rex, 1; Company "A," 1, 2.  
Bottoms up! "Around and 'round he goes, where he stops nobody knows." Troy's good natured and carefree manner adds to his ability to make and keep friends who wish him "Gluck Aull!"



**WILLIAM ARNOLD HARRIS**  
DUBLIN, GEORGIA

Sigma Theta, 1, 2; Vice-President Freshman Class; Glee Club, 2; Cheer Leader, 2; Corporal "B" Company, 2.  
"Bill" has been a loyal son of N. G. C. during his entire sojourn in the mountains. But "Bill" turned professional on us this year and his characteristic singing "er somethin'" made a certain young lady's heart go "yust like that." His likable ways have made many friends who bid him a fond "adieu."

**HENRY FAULK HARRISON**  
JEFFERSONVILLE, GEORGIA

Company "A," 2; Middle Georgia College, 1.  
After temporary mooring at Middle Georgia College, Harrison cruised into our midst. His presence on the campus has been a pleasure for all and his many newly acquired friends wish for him continued achievements.

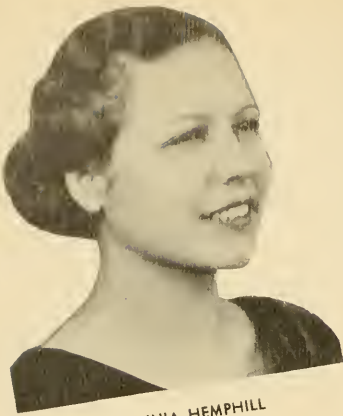
**F. JOE HAYNES, JR.**  
CLERMONT, GEORGIA

Glee Club, 2; Company "A," 1, 2.  
Slow and methodical; but don't let such descriptive words mislead you. Joe's as full of fun as Simons is jokes and believes in having fun anywhere and everywhere he goes. Pitchin' parties, goin' to Gainesville and dances seem to be his hobby and his many friends regret saying "adieu" to this leading funster.

**WILLIAM H. HEBBARD**  
MADISON, GEORGIA

Rex, 1; BUGLER Staff, 1; Company "A," 1, 2.  
Not only did Hebbard deserve to get the title "Most Useful Rat," but also one of the most useful Cadets during these last two years. From grading papers to smoking "two-fers" he has 'em all beat.

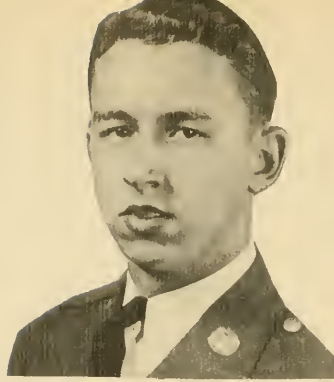




**VIRGINIA HEMPHILL**  
CARNESVILLE, GEORGIA

Y. W. C. A., 1, 2; Corona, 1, 2.

Virginia is one of those students who should get two diplomas. One for her own graduation and one for all the time she spends lending a hand to fellow-students, even if the task is a long one. It's good to have girls like her in the class.



**ROY B. HENDON**  
ACWORTH, GEORGIA

Rex, 1, 2; Rifle Team, 2; Sergeant-at-Arms, Sergeants' Club, 2; Dramatic Club, 2; Decora, 1; First Sergeant "B" Company, 2.

His proudest boast is that he comes from God's Country. (Only God can find it.) In spite of that short-coming, he is popular with his classmates and has been active in extra curricular affairs. Roy, too, is an artist of no mean ability.



**J. F. HOLDEN**  
WHITE PLAINS, GEORGIA

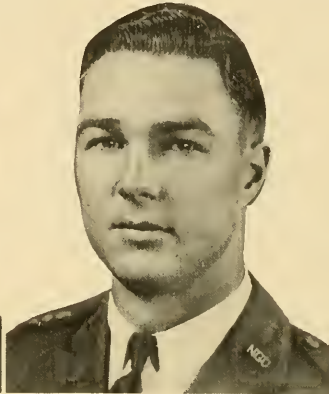
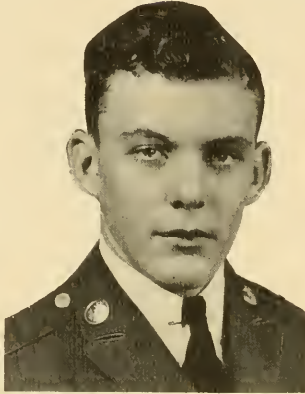
Rex Pledge, 2; Corporals' Club, 2; Corporal "B" Company, 2.

When and how "Johnnie" gets his work done is a mystery—but that he does is shown by his high Math marks and diploma. In the days to come, we feel sure "Johnnie" will be one of those men who make the wheels go round.

**ARTHUR ERNST HOLDT**  
CLARKESVILLE, GEORGIA

Rex Pledge, 2; CYCLOPS Staff, 2; "D" Club, 2; Basketball, 1, 2; Baseball, 2; Company "B," 1, 2.

Ernst—our handsome Cadet and Co-Ed's weakness—has participated in some sparkling games at forward and proved to be one of Coach's "mainstays." Well liked by everyone, Ernst's well rounded character proved an asset to the student body and here's more power to 'im.



**C. W. HOLTZCLAW**  
PERRY, GEORGIA

Rex, 1, 2; Rifle Team, 1, 2; Officers' Club, 1, 2; "D" Club, 1, 2; Captain "B" Company, 2.

A man of many moods and women—and not even he can tell which are major and which are minor. A man who stands alone when necessary, says what he pleases and, if I may add, is a pretty good guy on occasion for sportsmanship.

**WOODFIN K. HULME**  
DEWROSE, GEORGIA

Rex, 1, 2; Y. M. C. A., 2; Sergeants' Club, 2; Sergeant "B" Company, 2.

Neither snow, sleet, rain nor hail stops this messenger from the swift completion of his daily appointed rounds. A real "male-man" in every sense of the word.

**WILLIAM ANDREW JOHNS**  
TOCCOA, GEORGIA

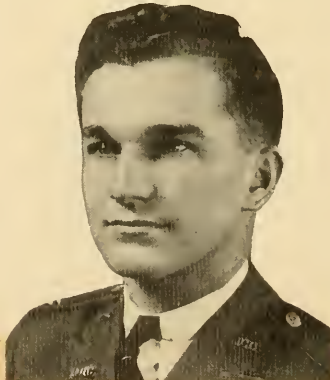
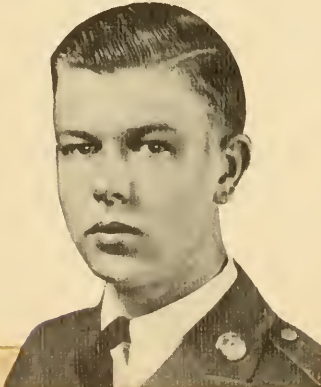
Rex Pledge, 1, 2; Officers' Club, 2; Dramatic Club, Stage Manager, 1, 2; Second Lieutenant "A" Company, 2.

Fair of hair and complexion, and well built, a man who combines a splendid appearance and likeable personality—these qualities exemplify our inimitable "Louie II"—pride of Toccoa.

**ELINOR JOHNSON**  
JEFFERSON, GEORGIA

Y. W. C. A., 2; Glee Club, 2; Dramatic Club, 2; Corona, 1, 2; Cheer Leader, 1, 2.

A glance at "Who's Who" proves that Miss N. G. C. truly deserves her title. From heart-breaking to leading cheers, Elinor has brightened many dreary moments, assisted by her ever-winning smile.

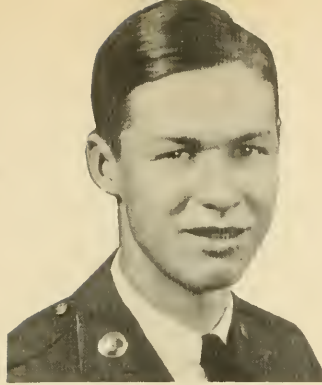




**JOHN A. JONES**  
DAHLONEGA, GEORGIA

Rifle Team, 2; Company "A," 1, 2.  
Glee Team, 2; Company "A," 1, 2.

John A. is due much applause for his superior ability at being one of the best marksmen in school for two consecutive years. Stand by your guns, Jones, and success is in your kit-bag.



**LLOYD KARDELL**  
WASHINGTON, D. C.

Rex, 1, 2; Speech Forum, 1, 2; Decora, 1; Company "B," 1, 2.

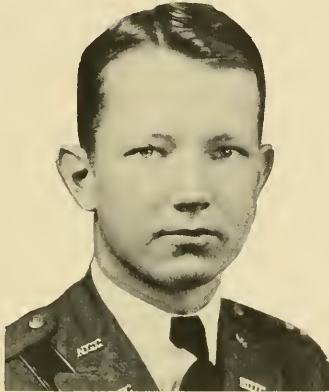
A man of inconsistencies, a nature ever varied, a personality dual in all its activities and letting routine tasks irk him. These few phrases give us an inkling of his true self. Though we, who know him, recognize in his virtues a noble spirit and we wish "George Washington" the best o' luck.



**BONNIE MAE KELLER**  
WHITESTONE, GEORGIA

Glee Club, 2; Corona, 2.

Although she joined us late last year, she has proved to be a very popular co-ed. Her friendly smile brings the old adage to mind—"Smile Bonnie, and the campus smiles with you."



**RALEIGH G. KNIGHT**  
ADEL, GEORGIA

Sigma Theta, 2; Officers' Club, 2; Glee Club, 2; Orchestra, 1, 2; First Lieutenant Band, 2.

"Midnight's" pet diversion is watching out for the welfare of the Freshmen over at the Band House. Where the interest of the first year men is concerned, there is Knight—always! Although he ruled by Bismarck's "blood and iron" policy—he got results and helped keep the "band-wagon rollin'."



**CORA BELLE LANCASTER**  
GAINESVILLE, GEORGIA

Y. W. C. A., President, 2; Home Economics Club, Treasurer, 2; G. S. C. W., 1.

"Choose your words as you would choose your friends—for their character."

If effort will take one to the "top" Cora Belle is there. Her sincerity makes her one of the best.

**CAROLYN LANGFORD**  
TIFTON, GEORGIA

Y. W. C. A., 1, 2; Cabinet, 2; Corona, 1, 2; Home Economics Club, 2.

Her ever ready smile lightens the hearts of many. She always does her part to the best of her ability.

**GRACE LANGFORD**  
MAYSVILLE, GEORGIA

Glee Club, 2.

Grace is a hard working student and is always interested in all phases of campus activities. Capable, too, may we add.

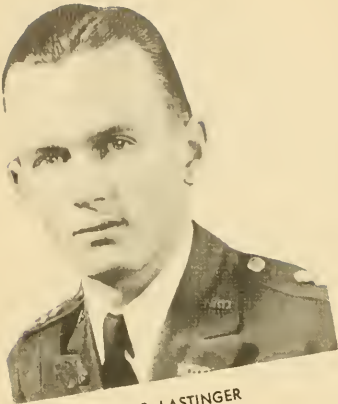
**MARY NELLE LANGFORD**  
MAYSVILLE, GEORGIA

Glee Club, 2.

Mary Nelle's determination and straight-forward manner have caused us to recognize her as an asset to our campus organizations.







**LEN B. LASTINGER**  
SPARKS, GEORGIA

Sigma Theta, 1; Officers' Club, 2; Glee Club, 1, 2; Orchestra, 1, 2; Captain Band, 2.  
Len has been a Captain in every respect this year and has held the respect and admiration of all who know him. He led by setting an example and working earnestly with his men. N. G. C. will not only miss Len, but also his remarkable musical talent.



**KATIE DEUEL LAVENDER**  
ATHENS, GEORGIA

Y. W. C. A., 1, 2; Corona, 1, 2; Home Economics Club, 1, 2.

A quick little smile and her willingness to lend a helping hand is synonymous to Katie. Her smile makes us all glad.



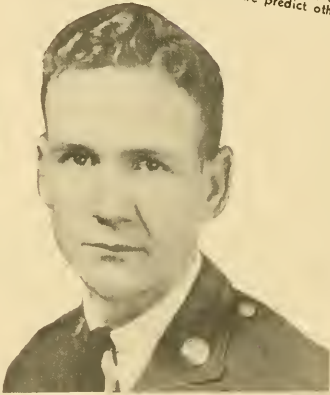
**W. J. LIDDELL**  
TIFTON, GEORGIA

Rex, 1, 2; Y. M. C. A., 2; President Sophomore Class; Musketry Team, 1; CYCLOPS Staff, 1, 2; Business Manager, 2; President Officers' Club, 1, 2; Business Club, 1, 2; BUGLER Staff, 1, 2; Business Manager, 1; Second Lieutenant "B" Company, 2.

Jack, the curly-haired, well-posted custodian of the Rex Club's and CYCLOPS' purse is a good example of the old adage that you can lead a horse to water but you can't make him sign checks. With his shrewd business head and reserved personality, how can we predict other than success for him?

**DOROTHY KILPATRICK LUNDY**  
MACON, GEORGIA

Y. W. C. A., 1; Corona, 1, 2.  
"Dot" is the essence of capability. We can only imagine what delight she gains from such a quiet, wholesome life.



**JAMES E. McCANTS**  
JACKSONVILLE, FLORIDA

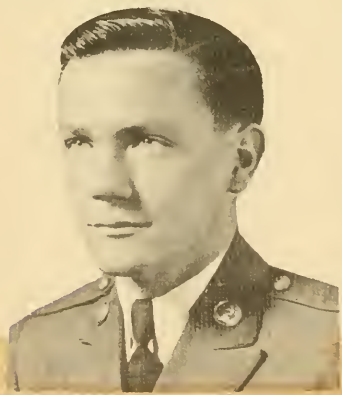
Sigma Theta, 2; University of Florida, 1.

"Ladies' Man" McCants has combined the affairs of the pulpit with affairs of the heart—and successfully, too. Though he has been here only one year, he has proven himself to be a true son of N. G. C., and may luck and Godspeed be his!

**KENNETH McCLUNG**  
DECATUR, GEORGIA

Rex Pledge, 1, 2; Sergeants' Club; Orchestra, 1, 2; Sergeant Band, 2.

"Ken" has kept himself pretty busy during his stay here. Various extra activities keep him in tip-top shape. Music is one of his pet diversions and you should hear him bang away at that "ole pianna."



**MARY DOROTHY McCURDY**  
COMER, GEORGIA

Y. W. C. A., 1, 2; Cabinet, 2; Glee Club, 1, 2; Corona, 1, 2.

Her cheerfulness and good-nature have made life a happier thing for all about her. With a personality like that—success is yours, "Dot."



**JESSIE KATE McDONALD**  
DAHLONEGA, GEORGIA

Corona, 1, 2; Y. W. C. A., 1; Assistant Secretary Home Economics Club, 2.

Full of pep and life and fun, she is always willing to take her share of life's burden and make the best of everything.







**MARVELLE McDONALD**  
DAHLONEGA, GEORGIA

Glee Club, 2.

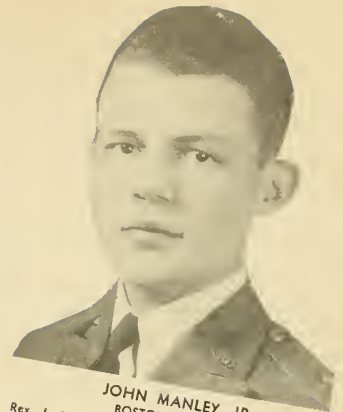
Friendly and good-natured—two qualities that help so much. Though independent to the N<sup>th</sup> degree, she holds the esteem and respect of all about her.



**M. M. MCKENZIE**  
CORDELE, GEORGIA

Sigma Theta, 1, 2, President, 2; Y. M. C. A., 1; Vice-President Sergeants' Club, 2; Decora, 1; First Sergeant Company "A," 2.

"Reds" trips to Atlanta and Gainesville and ways with the women have loaned a tint to his colorful career while here. Though supposedly a hard-boiled First Sergeant he has proved himself most popular upon the campus. He has served the Presidency of the Sigma Theta well this year and we wish him the success he deserves.



**JOHN MANLEY, JR.**  
BOSTON, GEORGIA

Rex, 1, 2; Y. M. C. A., 1, 2; Dramatic Club, 1, 2; Decora, 1; BUGLER Staff, 1, 2; Vice-President Officers' Club, 2; President Freshman Class, 1; President Student Body, 2; CYCLOPS Staff, 1, Editor-in-Chief, 2; Captain Company "A," 2.

"Cap'n Benny" has certainly been an all-round fellow of all honors one person could have. He brimmed full remarkably well and has further proven his ability by editing the year book and capably commanding Company "A." Although he leads the men on the campus, women exert a powerful influence. His experiences have taught him that local talent is "lops" and to beware of those "wile and wicious" women.



**BASCOM MARTIN**  
KINGSTON, GEORGIA

Corporal "B" Company, 2.

Bascom has established for himself the name of being a quiet, inconspicuous fellow. Though this quietness belies his hard work and earnest efforts to further himself educationally and morally as well.



**TOM MAUNEY**  
CLEVELAND, GEORGIA

Company "A," 1, 2.

Verbose, man of the world, sinner and revolutionist. He catered to no one and our guess is that he never will—yet those who know him have found him to be the best of company at all times.

**JOE MAYS**

LAWRENCEVILLE, GEORGIA

Y. M. C. A., 1, Secretary, 2; Rifle Team, 2; Sergeants' Club, 2; Glee Club, 2; Staff Sergeant, 2.

"Monk," despite his pious ways, is an all-round good chap and a hard worker whose cheerful congeniality is inspiring to friendship. These fine qualities combined with his high aims should carry him far toward his goal.

**TOY MOON**

MARIETTA, GEORGIA

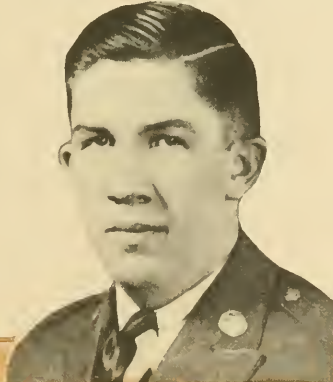
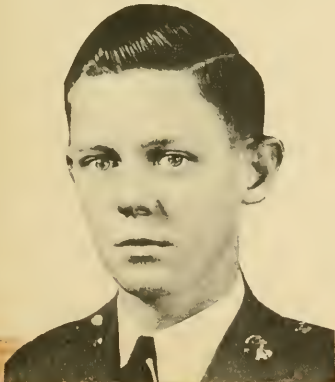
Y. M. C. A., 1, Treasurer, 2; Corporals' Club, 2; Decora, 1; Corporal "B" Company, 2.

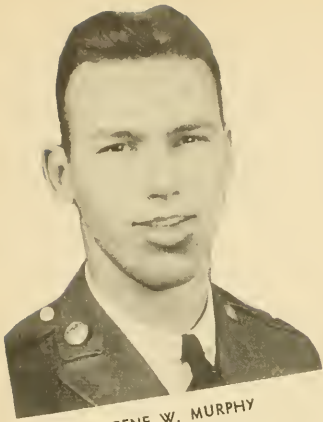
"Loyalty to my Company" is particularly expressive of Toy. Like an ole hen, he has this year guided the Freshmen on L. H. D. S. on the right road. His friendliness shows great possibilities in later life.

**JACK MULLINS**

DURAND, GEORGIA

Sigma Theta, 1, 2; Corporal "A" Company, 2. "Misery" is one of those quiet, modest and unassuming souls. We regret that he was called from our midst for so untimely a reason; and we wish him the best of luck, and look to see him assume more of the responsibilities of his chosen field.





**EUGENE W. MURPHY**  
LaGRANGE, GEORGIA

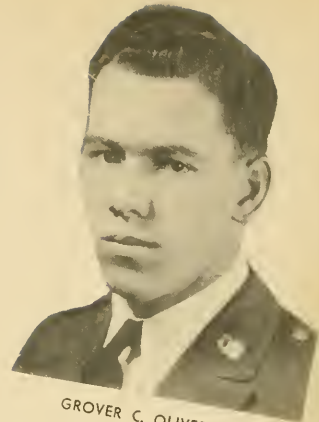
Rifle Team, 2; Corporal "A" Company, 2. Murphy has been one of the leading funsters in that capitol of tomfoolery, Coach's Barracks. Though happy-go-lucky to the extreme, we're glad to count him as our friend and may his cycle through life be efficient.



**WILLIAM F. NORRIS**  
NEWTON, GEORGIA

Sigma Theta, 1, 2; Y. M. C. A., 2; CYCLOPS Staff, 2; Treasurer Officers' Club, 2; President Speech Forum, 2; Glee Club, 1, 2; BUGLER Staff, 2; First Lieutenant "A" Company, 2.

Ah! Our heritage from Baker County. "Lieutenant Bill" possesses those rare and desirable qualities of dignity, leadership and friendliness which have helped him "make his mark" at N. G. C. "Bill" is a devoted member of Sigma Theta; and though rather timid around the girls, he makes up for it in his daily South Georgia correspondence.



**GROVER C. OLIVER, JR.**  
CLARKESVILLE, GEORGIA

Sigma Theta Pledge, 1; "D" Club, 1, 2; Basketball, 1, 2; Baseball, 1, 2; Corporals' Club, 2; Corporal "B" Company, 2.

A quiet, congenial fellow who possesses that rare gift of naturalness and is considered by all of us as a "reg'lar fella." More power to you, Oliver!



**JESSIE DEANE PALMER**  
MURRAYVILLE, GEORGIA

Always quiet and sincere, Deane has won many friends who wish for her the success which she deserves.

**CHARLES D. PITTS**  
GRIFFIN, GEORGIA

Rex Pledge, 2; Corporals' Club, 2; Cheer Leader, 1, 2; Band, 1, 2; Corporal Band, 2.

Another one of those fortunate individuals who always seems to know where he's headed for and how to get there with the least ado. We would like to bet that when the last trumpet has sounded, "Zatsu" will be there just a little ahead of everybody else, and with all the answers ready.

**JAMES K. PARKER**  
LUMPKIN, GEORGIA

Sigma Theta Pledge, 1, 2; Y. M. C. A., 2; Corporal Band, 2.

What will the poor girls up here next year do without our one and only—James K.? (He wonders, too.) Not only has he been an asset to our fairer sex, but a leader in our church and campus Christian organizations as well. We hope he continues to pursue such a successful course.

**JOHN W. PHILLIPS**  
DAHLONEGA, GEORGIA

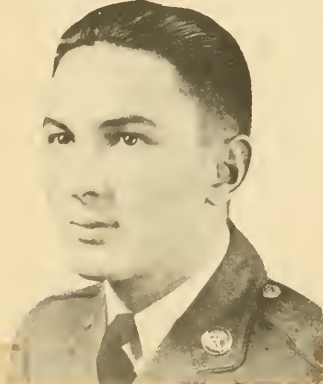
Company "A," 1, 2.

"Wint" is kept pretty busy serving as host to his many friends at his hot-dog emporium on the threshold of the campus. As a soldier, "Wint" makes an expert hot-dog dispenser—all in all, a likeable fellow.

**ESTELLE PURCELL**  
BALDWIN, GEORGIA

Y. W. C. A., 2; Chairman Membership Committee Home Economics Club, 2.

Though being with us only nine months Estelle has become a true and loyal daughter of N. G. C.





**OPAL RITCHIE**  
CAD, GEORGIA

Corona, 1.

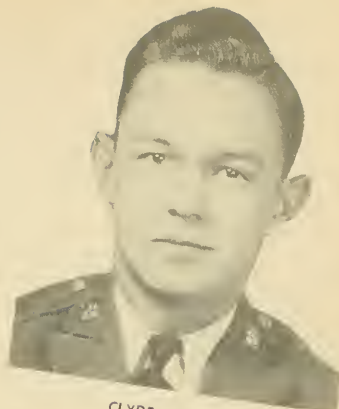
Opal is a good scout and takes everything with a smile. She is one of the most accommodating people we know, and she does favors for Freshmen or Faculty alike without the slightest hesitation. Such qualities are always admirable.



**ROY ROGERS**  
NEWTON, GEORGIA

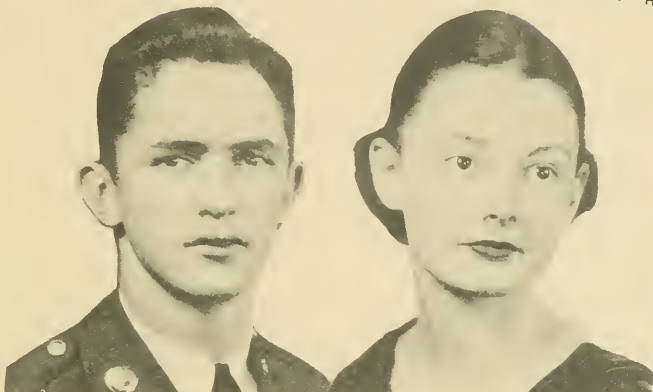
Sigma Theta, 1, 2.

A regular "Beau Brummel at Brenau" and a lion with the women. Despite Roy's physical drawback during his Freshman year he has made a name for himself, synonymous to popularity and the original "Scamp of the Campus." We prophesy for his future the success which he deserves.



**CLYDE RUSHIN**  
RIVERDALE, GEORGIA

Rex Pledge, 1, 2; Y. M. C. A., 1, Cabinet, 2; CYCLOPS Staff, 2; Dramatic Club, 2; Decora, 1; BUGLER Staff, 2; Speech Forum, 2; Corporal "A" Company, 2. "Soup" is one of the most popular men on the campus. Not only is he admired for his joviality, spirit and enthusiasm, but he further proves himself an "all-round" fellow by winning the title "Best Dancer." He merits much applause.



**JACK RUSSELL**

CLEVELAND, GEORGIA

"D" Club, 2; Basketball, 1, 2; Baseball, 1, 2; Sergeants' Club, 2; Sergeant "A" Company, 2.

Jack's good natured ways and inimitable smile have made him a friend to everyone. Athletics and A. W. O. L. inspections are his weakness, and he can never be accused of letting his studies interfere with his college education.

**JANE STARR SAPPINGTON**

MCDONOUGH, GEORGIA

Glee Club, 2; Dramatic Club, 2; Corona, 1, 2; BUGLER Staff, 1; Cheerleader, 1, 2.

Words can't describe her. She possesses "wim, wigor and witality" and is as full of spirit as the Cadet Ball. Starr is one of those celestial bodies that seems unconquerable—eh, Tom?

**EDWARD A. SKELTON**

HARTWELL, GEORGIA

Rex, 1, 2; Musketry Team, 1; Company "B," 1, 2.

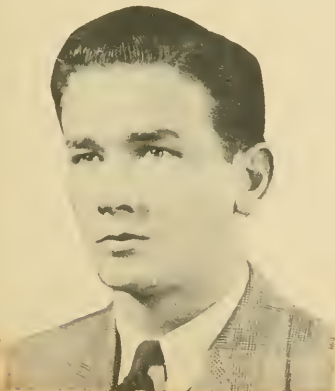
Eddie is one of the many fellows who stays up at night to solve problems (not mentioning that kind) and can then get to class the next morning "almost on time." His numerous trips and affairs with the fairer sex make him a man of experience on the campus.

**MARION L. SKELTON**

HARTWELL, GEORGIA

Rex Pledge, 1, 2; Company "B," 1, 2.

Marion, perhaps because of his disposition, has become very well acquainted with Morpheus. His hobbies are sleeping and eating; and it is our sincere hope that he never finds himself too sleepy to eat, and too hungry to sleep.

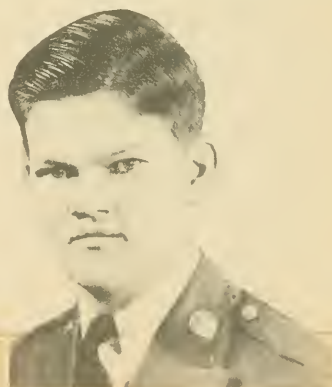
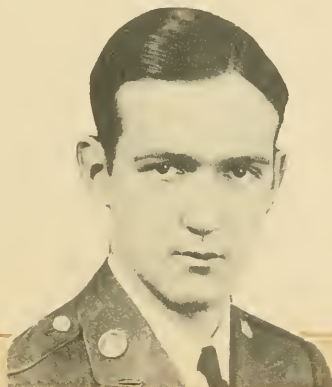


**D. C. SIRMONS**

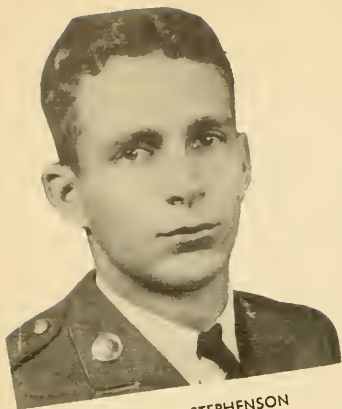
DAHLONEGA, GEORGIA

Special Student; "D" Club; Dramatic Club.

Tibbet in disguise, a real musician and an accomplished actor. Not only witty in himself, but the cause of wit in other men. We predict great things for "Si."

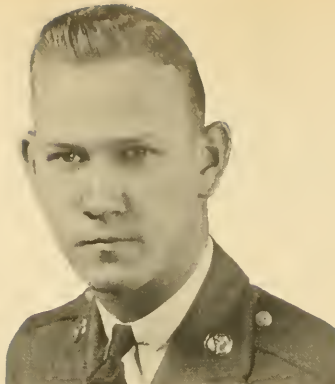






**ERNEST WINN STEPHENSON**  
EAST POINT, GEORGIA

"D" Club, 1, 2; Basketball, 1; Baseball, 1, Captain, 2; Sergeants' Club, 2; Sergeant "B" Company, 2.  
An all-round athlete if there ever was one! He is just as much at home on the "court" as he is on the "diamond"; and he's one guy "Daddy" Barnes doesn't have to worry about "keeping an eye on the ball." "Steve" can "dish it out" as well as "take it."



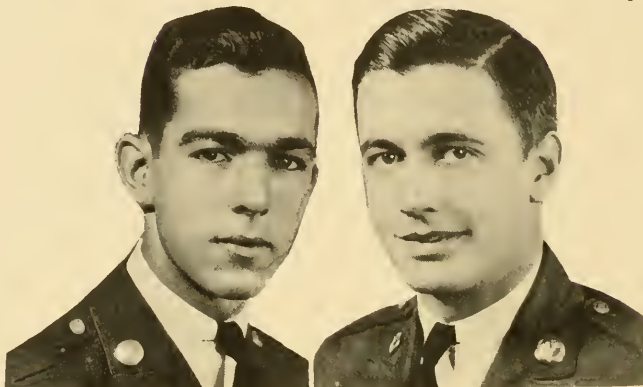
**WILLIAM E. STREYER**  
LUMPKIN, GEORGIA

Sigma Theta, 1, Treasurer, 2; Sergeants' Club, 2; Glee Club, 1, 2; Sergeant "B" Company, 2.  
Stop! Listen! Look!—at this handsome countenance and you'll understand why "Bill" has so many friends. He has developed a likeable personality and behind his amorous South Georgia thoughts are the "makings" of a real man.



**JOHN STRICKLAND**  
JEFFERSON, GEORGIA

Y. M. C. A., 2; Corporals' Club, 2; Rifle Team, 2; Corporal Band, 2.  
"Strick" has made many friends in these short two years despite his eternally being busy. He will always be a hard worker, just as he is at N. G. C., for he is one who believes that "plugging" gets a guy where he wants to go and he doesn't mind "putting out" to get there.



**I. O. TEASLEY**

ALPHARETTA, GEORGIA

Sigma Theta, 1, 2; Corporal "A" Company, 2.

Collegiate to the "Nth" degree—"Little Sarge's" best friend and a fiend on clothes. His qualities of leadership and personality inspire us to wish "I. O." well—"beer" this in mind, old boy.

**LEWIS ALLEN THOMASON**

NELSON, GEORGIA

Rex, 1, 2; Speech Forum, 2; Dramatic Club, 1, 2; Editor-in-Chief CADET BUGLER, 1, 2; Company "A", 1, 2.  
Born in Nelson, Georgia, Cherokee County, August 3, 1917—.

**FRANCES TURNER**

NICHOLSON, GEORGIA

Y. W. C. A., 1, Vice-President, 2; Corona, 1, President, 2; Dramatic Club, 1, 2; Girls' Glee Club, 2; Assistant Editor CYCLOPS, 2.

Her executive ability and characteristic leadership have caused Frances to be a leader and hold many offices in our campus organizations. It has been swell having Frances as a pal.

**JOEL D. TURNER**

MOULTRIE, GEORGIA

Rex Pledge, 1, 2; Y. M. C. A., 2; CYCLOPS Staff, 2; Sergeants' Club, 2; Speech Forum, 2; Sergeant "A" Company, 2.

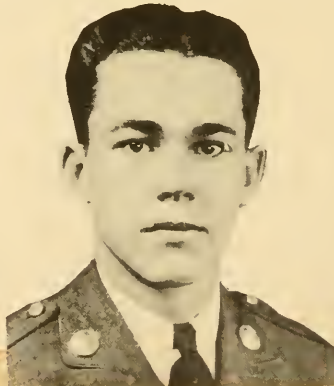
His great ambition is to be a doctor, which means some connection with nurses—nuf sed! His records show his academic ability, and Joel has been a swell pal to anyone who wanted real friendship.

**ABEL B. WALTON**

ELLIJAY, GEORGIA

Sigma Theta Pledge, 1, 2; Glee Club, 1, 2; Corporal "A" Company, 2.

"Aby" has been the spark plug of L. H. U. S. these last two quarters. Though overlooking his boisterous, cane-raisin' nature, he's got the stickability to win, the brains to make good marks without crackin' a book and the personality to make friends wherever he goes.







**LAMAR WANSLEY**  
CARNESVILLE, GEORGIA

"D" Club, 1, 2; Baseball, 2; Basketball, 1, 2; Company "B", 1, 2.

"Short" is distinguished for his racing and basketball ability, and on the court proved to be a veritable Piedmont Terror. Wansley captained his team admirably this year and made us realize what a real athlete and fella he really is.



**LEO D. "BIG" WEEKS**  
LUDVILLE, GEORGIA

Rex, 1, 2; Rifle Team, 2; Vice-President Corporals' Club, 2; "D" Club, 1, 2; Baseball, 1; Cheer Leader, 2; Corporal "A" Company, 2.

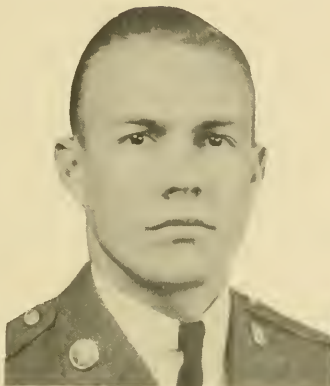
Combining a continual pleasantness with an aleit mind, "Big Weeks" has won the friendship and respect of all who know him. His originality and musical talent has brightened many "Bull Sessions" at N. G. C., and may we say "success to your future, Dr. Weeks."



**HOWARD L. WEEKS**  
PIERCEVILLE, GEORGIA

BUGLER Staff, 1; Company "A," 1, 2.

"Little Weeks," despite his quiet and retiring nature, deserted us the fall quarter this year and became "school marm" somewhere in "these hyar hills." His return to our midst was welcomed and we can always remember him as being an earnest, conscientious fellow.



**PETE WHITEN**  
MARTIN, GEORGIA

"D" Club, 2; Basketball, 2; Corporal "B" Company, 2.

"Pete" kept it "hot" for the barracks boys this past winter and has made many friends who wish "the best o' luck" to a hard worker and good fellow.



**ERSKINE WHITMIRE**  
DAHLENEGA, GEORGIA

Band, 1, 2.

Erskine is a local boy who came to N. G. C. to further his "larnin'" and make his mark in this hectic world. His quiet disposition and friendly manner is an asset—luck to you, ole man.

**BEULAH WILLIAMS**  
CLAYTON, GEORGIA  
Piedmont, 1.

Though Beulah recently came into our midst, she is liked by all. Despite her quiet and unassuming manner, we shall always connect her with Professor Anthony's broken heart.

**HENRY G. WILLIAMS**  
WARM SPRINGS, GEORGIA

Sigma Theta, 1, 2; Y. M. C. A., 1; Speech Forum, 1, 2; Decora, 1; Glee Club, 2; Company "A," 1, 2. A guy who knows his values. A real capitalist yet to be discovered. Perhaps he is attempting to carry out his friend's (the President's) economy program to the extent of subscribing for the CYCLOPS. Could one wonder that he is called "Ambitious?"

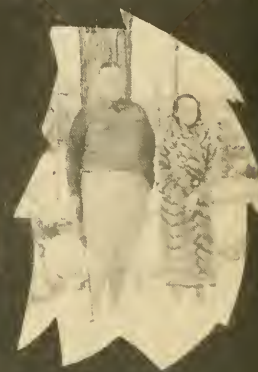
**ROBERT LIPSCOMB WYNN, JR.**  
JONESBORO, GEORGIA

Rex, 1, 2; Y. M. C. A., 1; President, 2; Officers' Club, 2; Speech Forum, 2; "D" Club, 1, 2; Decora, 1; BUGLER Staff, 1, 2; Baseball, 1, 2; First Lieutenant Staff, 2.

On the day "Bob" graduates, N. G. C. will lose one of its leading literary lights and campus leaders. The "Pride of Jonesboro" in his quiet, unassuming manner has excelled in military, academic work and extra-curricular activities. May success be yours, Bob!



# SNAP SHOTS





# FRESHMEN



PARKER

FARRAR

MORGAN

SELPH





## FRESHMEN

ROBERT ADAIR  
Dublin, Ga.

WM. ANDREWS  
Thomaston, Ga.

E. F. BIRD  
Metter, Ga.

REGINALD BYRD  
Camak, Ga.

J. R. ADAMS  
Camilla, Ga.

E. A. ATKINSON  
Atlanta, Ga.

R. M. BLANTON  
Valdosta, Ga.

A. W. CAGLE  
Ball Ground, Ga.

O. E. ADAMSON  
Jonesboro, Ga.

LILLIAN BANKS  
Tennille, Ga.

J. M. BONNER  
Rutledge, Ga.

JULIA CARROLL  
Dawsonville, Ga.

SAM ALFORD  
Bostwick, Ga.

C. E. BEARD  
Marble Hill, Ga.

W. H. BONNER  
Lavonia, Ga.

JOHN CASH  
Gainesville, Ga.



### FRESHMEN

S. A. CASTELLAW  
Locust Grove, Ga.

JAMES CORBITT  
Brunswick, Ga.

J. P. DYAR  
Greensboro, Ga.

THURLOW EVANS  
Atlanta, Ga.

P. J. CATES  
Buford, Ga.

LOIS CORDELL  
Hartwell, Ga.

SARAH DYER  
Demorest, Ga.

MARION FARRAR  
Avondale Estates, Ga.

T. W. CHAMBERS  
Toombsboro, Ga.

A. H. DRANE  
Union Point, Ga.

EDWARD EARLE  
Clarksville, Ga.

BENNETT FLOYD  
ChIPLEY, Ga.

JULIA COOPER  
Grayson, Ga.

W. T. DUNCAN  
Dublin, Ga.

RUBY EDWARDS  
Resaca, Ga.

SAM FORRER  
Griffin, Ga.



### FRESHMEN

GERALD FRANKUM  
Gillsville, Ga.

A. C. GILLELAND  
Griffin, Ga.

EDWIN GOOLSBY  
Carnesville, Ga.

RAY GRINER  
Valdosta, Ga.

T. H. FRIER  
Douglas, Ga.

KATHERINE GILLIAM  
Copper Hill, Tenn.

JAMES GORNTO  
Valdosta, Ga.

FRED HAMBRIGHT  
Atlanta, Ga.

JOE FUNDERBURK  
Bainbridge, Ga.

THOMAS GLOVER  
Lumpkin, Ga.

L. P. GREER  
Valdosta, Ga.

ROBERT HAMBY  
Clayton, Ga.

WM. FUQUA  
Unadilla, Ga.

J. F. GOODE  
Carnesville, Ga.

WM. GREGORY  
Eton, Ga.

G. W. HAMMOND  
Newnan, Ga.





### FRESHMEN

ANITA HAMMOND  
Madison, Ga.

ELGIN HARDIN  
Dalton, Ga.

KATHERINE HARRIS  
Lawrenceville, Ga.

MAE HEAD  
Cleveland, Ga.

W. H. HENDERSON  
Calhoun, Ga.

CLIFFORD HENSON  
Ellijay, Ga.

B. F. HOLCOMB  
Gainesville, Ga.

CARL HOLCOMB  
Fort Valley, Ga.

CHARLES HOOD  
Dacula, Ga.

G. M. INGRAM  
Marietta, Ga.

BEN IRVIN  
Washington, Ga.

JOE JACKSON  
Sandersville, Ga.

G. T. JARRARD  
Chauncey, Ga.

JAMES JARRETT  
Toccoa, Ga.

U. R. JENKINS  
Wrightsville, Ga.

J. S. JONES  
Demorest, Ga.



## FRESHMEN

BILLY KENDALL  
Valdosta, Ga.

R. L. LIPSCOMB  
Rydal, Ga.

J. H. MALONE  
Mansfield, Ga.

G. M. MAULDIN  
Rocky Face, Ga.

A. L. KING  
Baldwin, Ga.

NELSON McGAHEE  
Dearing, Ga.

S. D. MANDEVILLE  
Tennille, Ga.

CHRISTINE MAUNEY  
Fairmount, Ga.

EDNA LANE  
Dalton, Ga.

JAMES McGEE  
Lawrenceville, Ga.

DAN MARTIN  
Toccoa, Ga.

CLEON MERRITT  
Cumming, Ga.

FRED LEAGUE  
Gainesville, Ga.

W. H. McWHORTER  
Decatur, Ga.

VERNON MARTIN  
Gainesville, Ga.

R. M. MILLICAN  
Hapeville, Ga.



### FRESHMEN

VIRGINIA MOON  
Marietta, Ga.

H. J. NORRIS  
Tucker, Ga.

EMILY O'SHIELDS  
Dahlonega, Ga.

NAT PENDERGRASS  
Griffin, Ga.

JAMES MORGAN  
Dearing, Ga.

BEN NUCKOLLS  
Gainesville, Ga.

D. J. PALMER  
Cleveland, Ga.

W. E. PITTS  
College Park, Ga.

BOND MURRAY  
Danielsville, Ga.

DORIS OGLESBY  
Hartwell, Ga.

ROBERT PARKER  
Fairburn, Ga.

W. M. REED  
Lexington, Ga.

H. D. NORRIS  
Tucker, Ga.

LYNN ORR  
Forest Park, Ga.

GUY REID PARKER  
Valdosta, Ga.

ERSKINE RICE  
Fort Valley, Ga.





## FRESHMEN

SARAH RIDEN  
Madison, Ga.

C. E. SELPH  
Valdosta, Ga.

RICHARD SEXTON  
Danielsville, Ga.

J. O. SIRMONS  
Willacoochee, Ga.

STELLA SMITH  
Dahlonega, Ga.

LYOYD SPAIN  
Bethlehem, Ga.

GARNETT SPRATLIN  
Jefferson, Ga.

WM. STANFORD  
Valdosta, Ga.

WM. D. STRONG  
Blakely, Ga.

A. T. TAYLOR  
Atlanta, Ga.

T. H. TERRELL  
Lula, Ga.

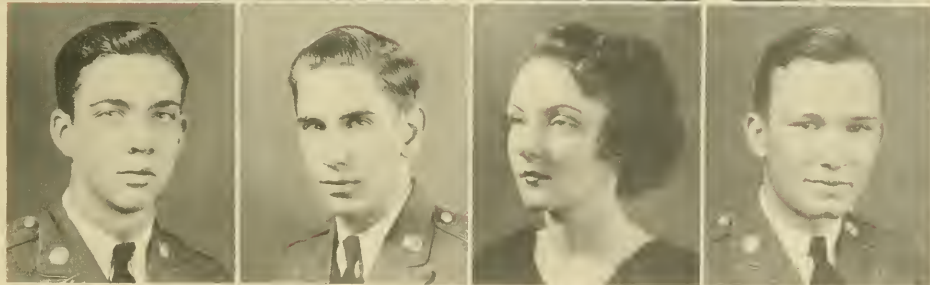
EVIE THOMAS  
Martin, Ga.

ETHEL THOMSOM  
Ancram, N. Y.

W. T. TOWNSEND  
Cartersville, Ga.

J. L. VEATCH  
Ila, Ga.

CRANT WATSON  
Toccoa, Ga.



### FRESHMEN

WADE A. WATSON  
Americus, Ga.

CLYDE WEHUNT  
Dahlonega, Ga.

ROBERT WHITESIDES  
Cartersville, Ga.

MARY LUCY WILKINSON  
Newnan, Ga.

HUGH WILLIAMS  
Zebulon, Ga.

J. M. WILLIAMS  
Thomaston, Ga.

G. W. WILLIAMS  
Danielsville, Ga.

JEAN WILSON  
Florence, S. C.

JUNE WOODALL  
Tate, Ga.

J. K. WRIGHT  
Decatur, Ga.

R. W. WRIGHT  
Roswell, Ga.

MARGERY WYTHE  
Atlanta, Ga.

G. E. ZIEGLER  
Thomasville, Ga.



Hugh Dorsey Ashe  
Freshman  
STONE MOUNTAIN, GA.



W. A. Henderson  
Freshman  
DAHLONEGA, GA.



William Forehand  
Freshman  
SYLVESTER, GA.



C. H. Souther  
Freshman  
DALTON, GA.



Loinie Owens  
Sophomore  
CANTON, GA.



Ruth Souther  
Sophomore  
DALTON, GA.



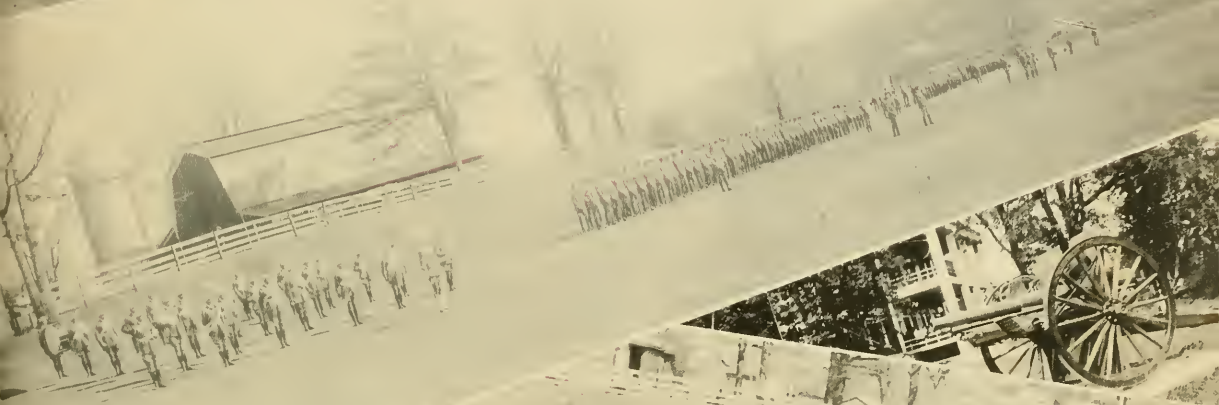
Jerry Upchurch  
Freshman  
ATLANTA, GA.

*Pictures on this page were made after Sophomore and Freshman Sections had been completed.*





MILITARY





CAPTAIN KIRBY GREEN, P. M. S. & T.

After capably commanding the North Georgia College R. O. T. C. unit for the past eight years, Captain Green has been posted elsewhere to assume similar army duties. He has been a valuable and wise leader, a strict but fair-minded disciplinarian, and an altogether capable officer. He has planted within our minds the true spirit of Americanism and patriotism, and it is due to his unceasing efforts that the R. O. T. C. unit here has maintained its high standards. That he will not be with us next year is our misfortune, but we wish him the best of luck through years to come—

A splendid leader in every sense of the word.

SERGEANT RICHARD S. McCONNELL

(Ass't. P. M. S. & T.)

The excellent complement of Captain Green is Sergeant McConnell, the man among men, the boy among boys, North Georgia's kingpin. Rather than being of the institution, Sergeant is an institution. His personality is so impressed on everyone with whom he comes in contact that a mere mention of North Georgia College brings a recollection of Sergeant, a recollection sometimes of a hard duty fearlessly performed, but more often perhaps of some kindness he has so naturally shown.





## OFFICERS CLUB

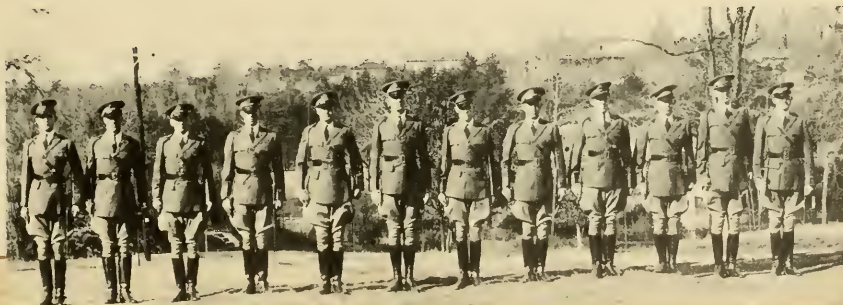
## Officers Club

CADET SECOND LIEUTENANT W. J. LIDELL . . . . .	President
CADET CAPTAIN J. B. MANLEY . . . . .	Vice-President
CADET FIRST LIEUTENANT R. L. WYNN . . . . .	Secretary
CADET FIRST LIEUTENANT W. F. NORRIS . . . . .	Treasurer

### MEMBERS

CADET CAPTAIN F. M. BOLDING  
 CADET SECOND LIEUTENANT M. E. BOOTH  
 CADET FIRST LIEUTENANT G. G. BURCH  
 CADET SECOND LIEUTENANT W. C. FIELD

CADET CAPTAIN C. W. HOLTZCLAW  
 CADET SECOND LIEUTENANT W. A. JOHNS  
 CADET FIRST LIEUTENANT R. G. KNIGHT  
 CADET CAPTAIN L. B. LASTINGER







**COLORS**

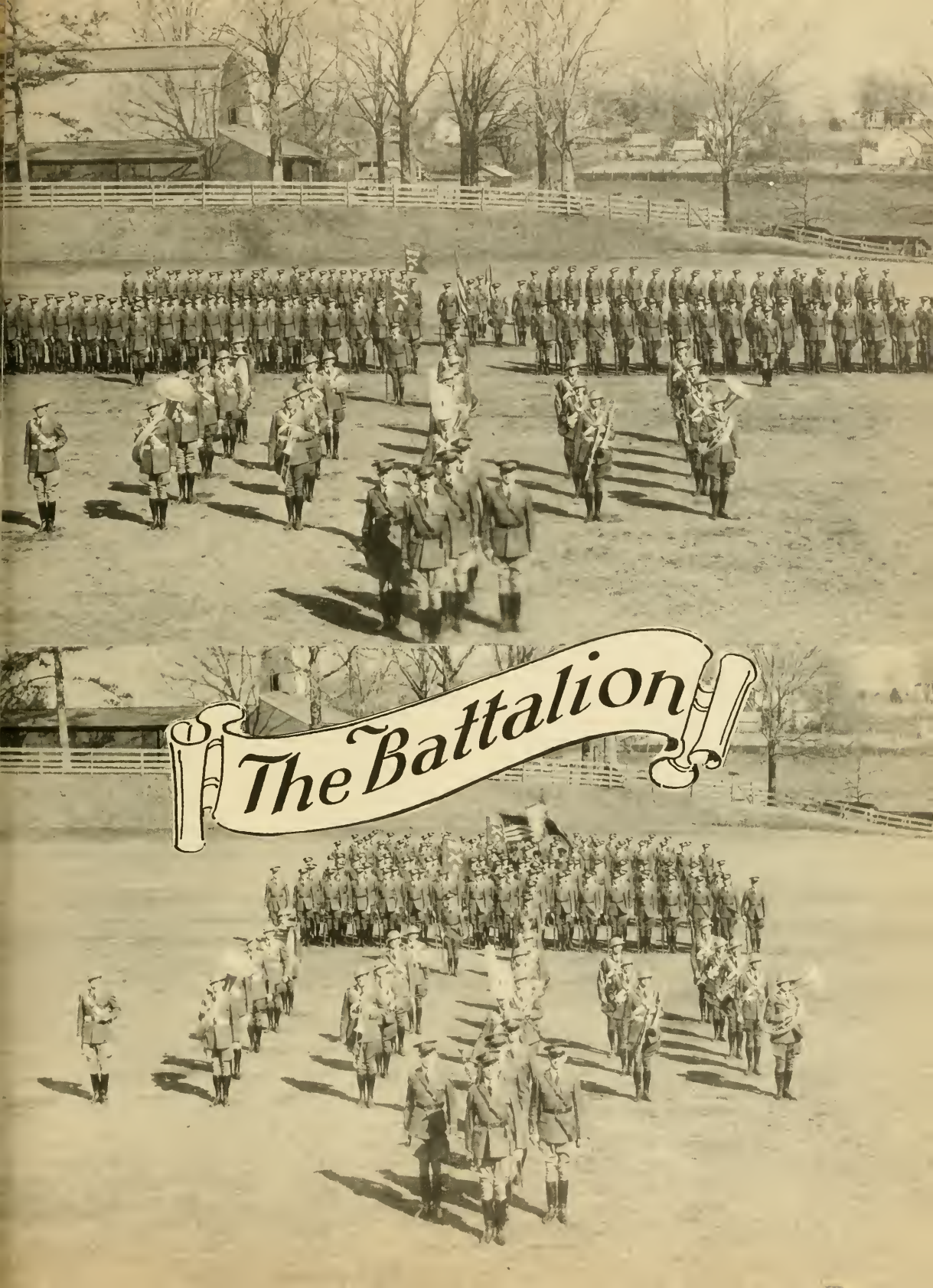
CADET PRIVATE SKELTON  
 CADET COLOR SERGEANT DANCE  
 CADET COLOR SERGEANT CLARK  
 CADET PRIVATE GAY



**STAFF PERSONNEL**

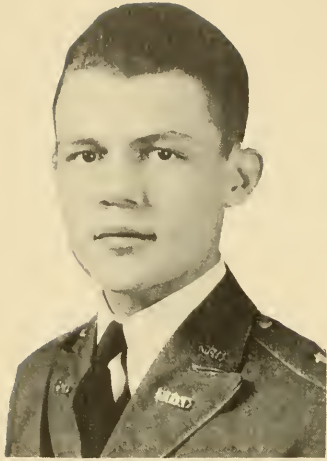
CADET CAPTAIN F. M. BOLDING  
 CADET FIRST LIEUTENANT R. L. WYNN  
 CADET SECOND LIEUTENANT W. C. FIELD  
 CADET SERGEANT S. A. DANCE  
 CADET SERGEANT L. CLARK  
 CADET SERGEANT J. D. MAYS

*Battalion  
 ~ Staff*

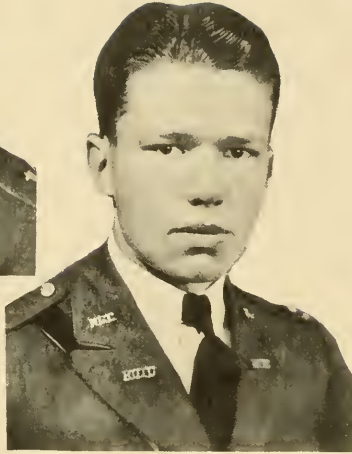


*The Battalion!*

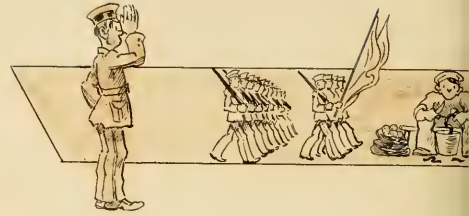




JOHN B. MANLEY, JR.  
Cadet Captain



WILLIAM F. NORRIS, JR.  
Cadet First Lieutenant



## COMPANY "A"

### Platoon I

ADAIR  
ANDREWS  
ATKINSON  
BOATWRIGHT  
BONNER  
BROWN  
BRYAN  
BYRD  
CORBITT  
DALTON

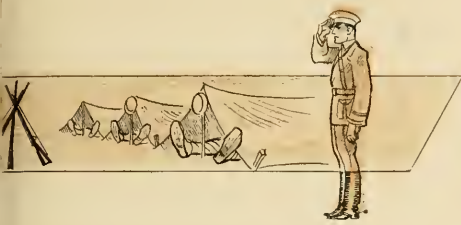
DAVIS  
DRANE  
DYAR  
EVANS  
FORRER  
GAY  
GOODRUM  
GORNTO  
GUTHRIE  
HAYNES  
HENDERSON

HARDIN  
JARRARD  
JARRETT  
JONES  
LEDBETTER  
MARTIN  
MAULDIN  
McCANTS  
MERRITT  
MURPHY

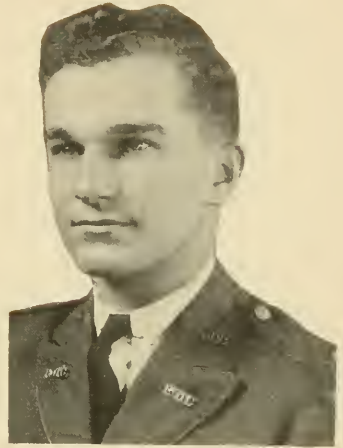
NUCKOLLS  
NORRIS, H.  
RUSSELL  
STRONG  
WEEKS, D.  
WEEKS, H.  
WILSON  
WILLIAMS, J. M.  
WHITESIDES







MEREDITH M. McKENZIE  
Cadet First Sergeant



WILLIAM A. JOHNS  
Cadet Second Lieutenant

## COMPANY "A"

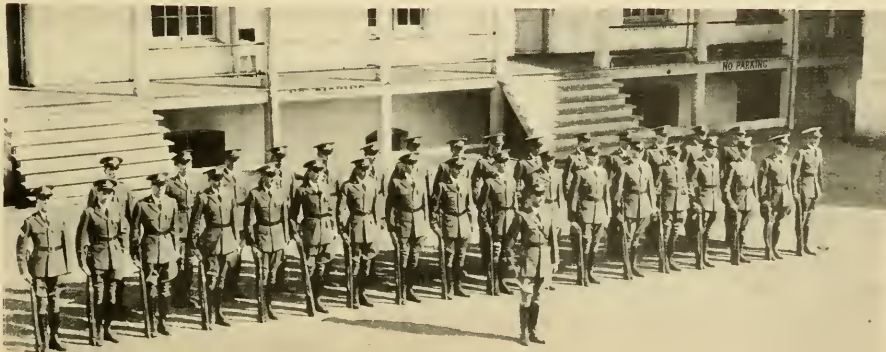
### Platoon 2

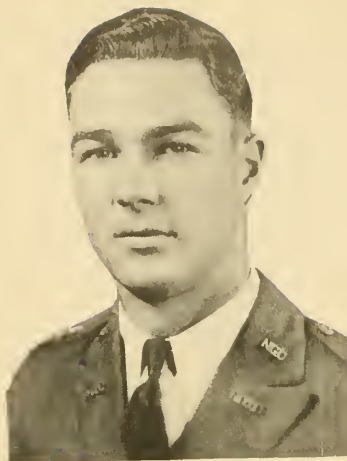
ADAMS  
ADAMSON  
ALFORD  
ASHE  
BAKER  
BIRD  
BURT  
CASTELLAW  
CATES  
CHAMBERS

DUNCAN  
EARLE  
FARRAR  
HEBBARD  
HANCOCK  
HAMBRIGHT  
HARRISON  
HOLCOMB  
HOOD  
MANDEVILLE

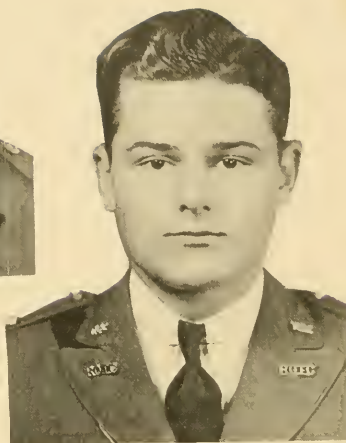
MAUNEY  
McGAHEE  
MORGAN  
MULLINS  
NORRIS, D.  
ORR  
PALMER  
PARKER  
PHILLIPS  
QUINTRELL

REED  
RUSHIN  
TEASLEY  
THOMASON  
TOWNSEND  
TURNER  
WALTON  
WEHUNT  
WILLIAMS, H.  
ZEIGLER

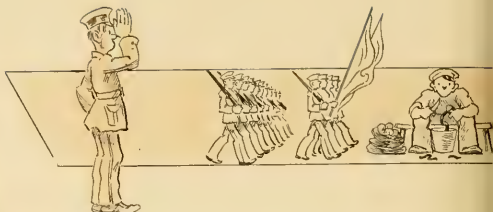




CHARLES W. HOLTZCLAW  
Cadet Captain



GLENN G. BURCH  
Cadet First Lieutenant



## COMPANY "B"

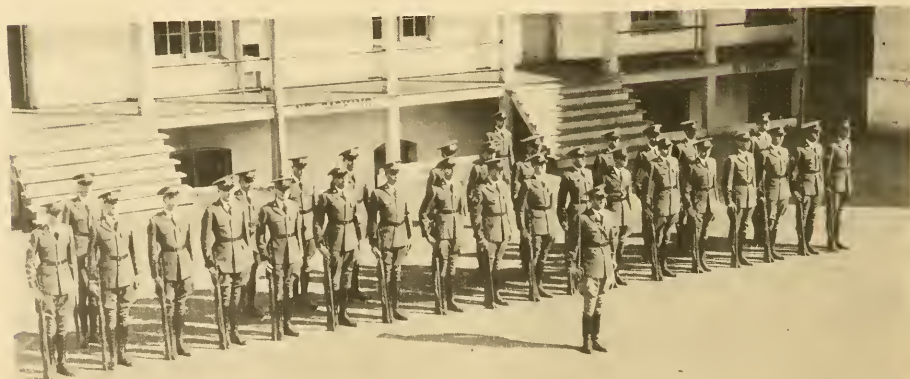
### Platoon I

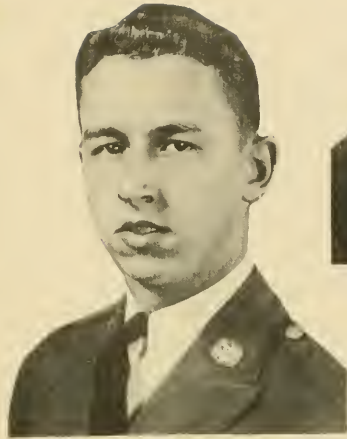
BEALL  
BLANTON  
CHAMBERS, G.  
CRAMNER  
FOWLER  
FOREHAND  
FRANKUM  
FRIER  
GARRISON  
GREER

GREGORY  
HENDERSON, H.  
HOLDT  
HULME  
JENKINS  
KARDELL  
LOWRY  
MALONE  
MARTIN, W.

McGEE  
McKEY  
MILLICAN  
OLIVER  
PARKS  
PITTS, W.  
REPPARD  
RICE  
SEXTON

SIRMONS  
STANFORD  
STEVENSON  
WANSLEY  
WATSON, C.  
WATSON, W.  
WHITEN  
WILLIAMS, S.  
WRIGHT, J.





ROY B. HENDON  
Cadet First Sergeant



W. JACK LIDDELL  
Cadet Second Lieutenant

COMPANY "B"  
Platoon 2

BEARD  
BURRELL  
CARLTON  
FLOYD  
FUNDERBURK, J.  
GLOVER  
GOODE  
GOOLSBY  
GRINER

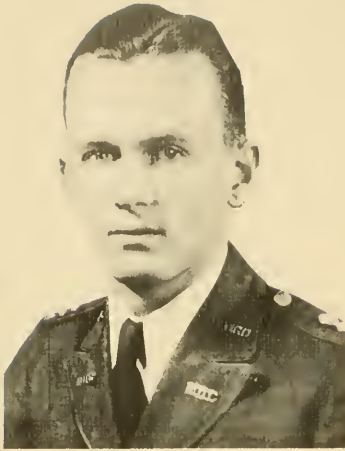
HAMBY  
HAMMOND  
HARBIN  
HENSON  
HOLCOMB, C.  
HOLDEN  
INGRAM  
JACKSON  
JONES, S.

KENDALL  
KING  
LANE  
LEAGUE  
LIPSCOMB  
MACOMSON  
MARTIN, B.  
McCAY  
MOON

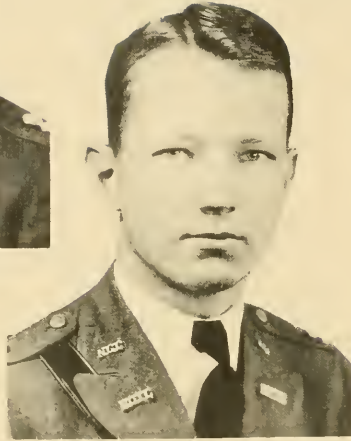
PARKER, G.  
SKELTON, E.  
SKELTON, M.  
SOUTHER  
SPAIN  
SPRATLIN  
STREYER  
UPCHURCH  
WRIGHT, R.



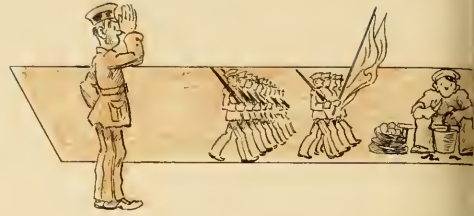




LEN B. LASTINGER  
Cadet Captain



RALEIGH G. KNIGHT  
Cadet First Lieutenant



### BAND

BOGGS  
BONNER, W.  
BRAY  
CAGLE  
CASH  
EVANS, W.

EVANS, T.  
FUNDERBURK, J.  
GILLELAND  
IRVIN  
McCLUNG  
McWHORTER

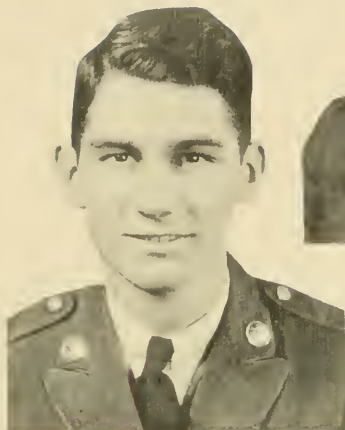
MARION  
MURRY  
PARKER, J.  
PENDERGRASS  
PITTS, C.  
SELPH

STRICKLAND  
TAYLOR  
VEATCH  
WHITMIRE  
WILLIAMS, W.





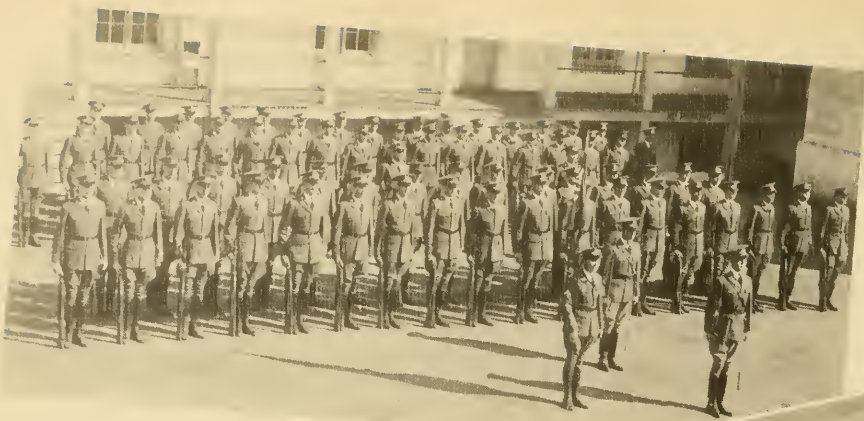
MELL E. BOOTH  
Cadet Second Lieutenant



WILLIAM R. BOWERS  
Cadet First Sergeant

## BAND

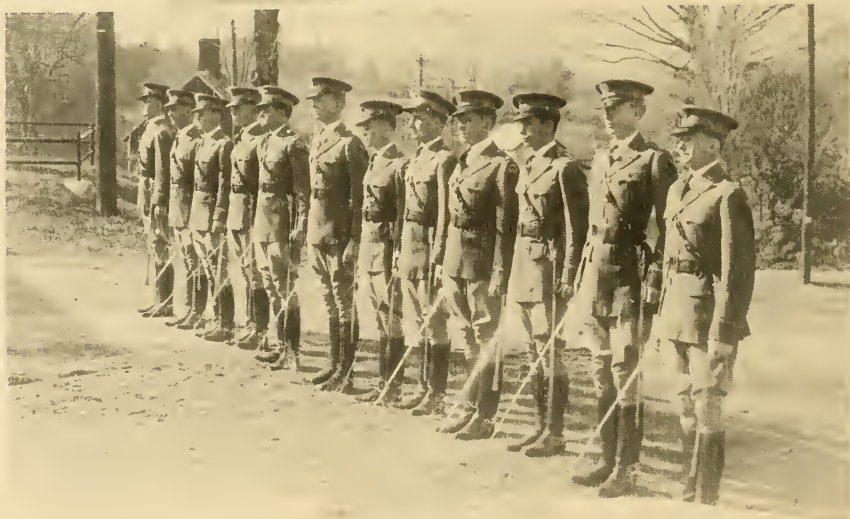




HONOR COMPANY, '35-'36



RIFLE TEAM



OFFICERS CLUB



# ORGANIZATIONS





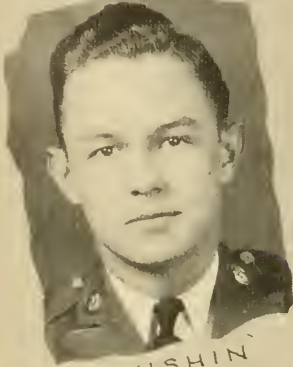
MANLEY  
*Editor in Chief*



LIDDELL  
*Business Manager*



P. TURNER  
*Assistant Editor*



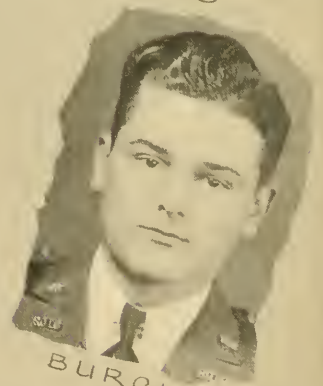
RUSHIN



NORRIS



J. TURNER



BURCH



ANDREWS

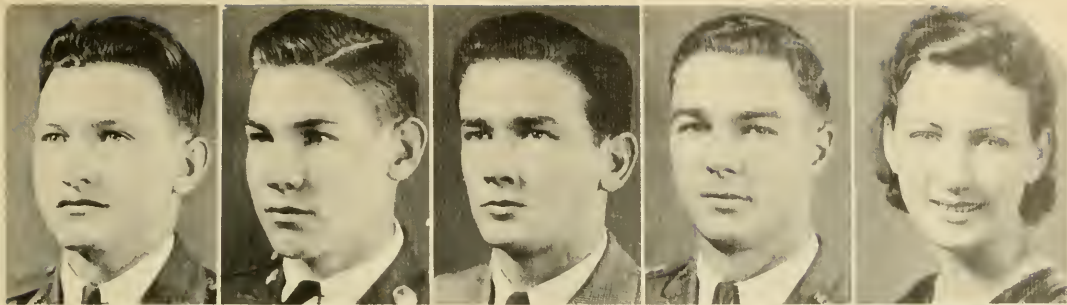


WYNN



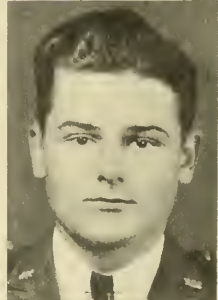
RICE





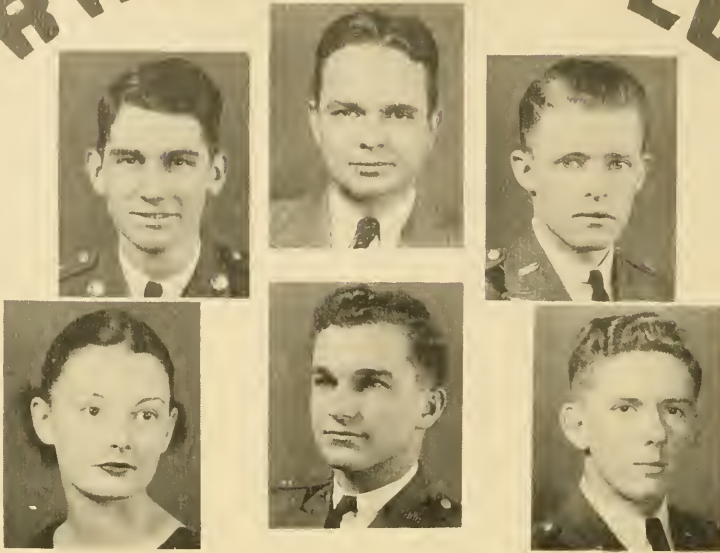
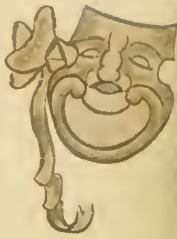
WEARERS OF THE "D"

- BURCH . . . . . Rifle Team
- DANCE . . . . . Rifle Team
- FIELDS . . . . . Rifle Team
- HOLDT . . . . . Basketball
- HOLTZCLAW . . . . . Rifle Team
- JARRETT . . . . . Basketball
- JOHNSON . . . . . Cheer Leader
- OLIVER . . . . . Baseball-Basketball
- PARKER . . . . . Baseball
- RUSSELL . . . . . Baseball
- SAPPINGTON . . . . . Cheer Leader
- SIRMONS . . . . . Baseball
- UPCHURCH . . . . . Baseball, Basketball
- WANSLEY . . . . . Basketball
- WEEKS . . . . . Baseball
- WYNN . . . . . Baseball





# DRAMATIC CLUB



## OFFICERS

W. R. BOWERS  
President

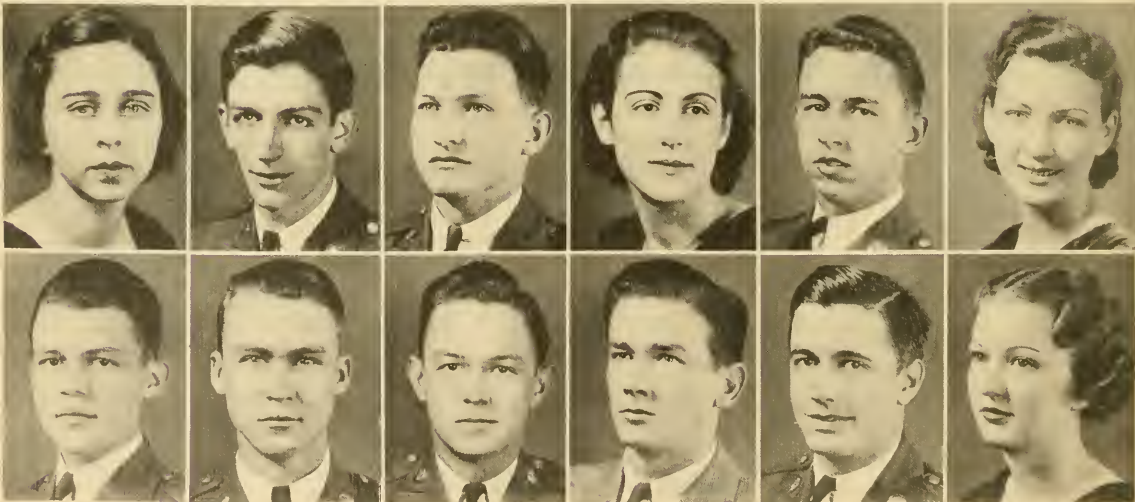
C. J. DISMUKES  
Director

F. M. BOLDING  
Vice-President

JANE SAPPINGTON  
Secretary

W. A. JOHNS  
Stage Manager

W. J. LIDDELL  
Business Manager



## MEMBERS

BANKS  
MANLEY

BURT  
RICE

FIELD  
RUSHIN

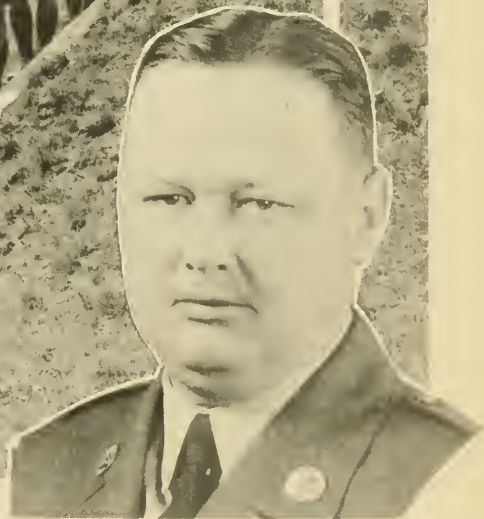
HARRIS  
SIRMONS, D.

HENDON  
THOMASON

JOHNSON  
TURNER



W. DESMOND BOOTH  
Director



RICHARD S. McCONNELL  
Business Manager

## The Glee Club

CHORUS

First Tenors  
DAVIS, C. M.  
NORRIS, W. F.  
PENDERGRASS  
RICE  
WALTON  
WILLIAMS, H.

Second Tenors  
BURRELL  
FIELDS  
GORNTO  
MAYS  
McWHORTER  
WILLIAMS, W.

Baritones  
BOGGS  
BOOTH  
EVANS  
KNIGHT  
LASTINGER  
McCLUNG

Basses  
BOWERS  
CORBITT  
SELPH  
SIRMONS, D.  
Stage Manager  
JOE MAYS



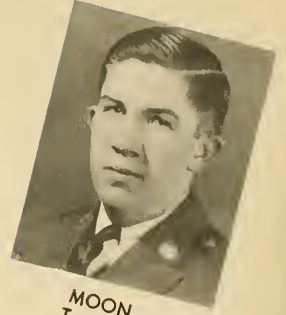
WYNN  
President



BOWERS  
Vice-President



MAYS  
Secretary



MOON  
Treasurer



DR. ROGERS . . . . . Faculty Adviser

COMMITTEE CHAIRMEN

Program

Mission

Finance

Fellowship

Worship

Social



BROWN



CATES



LIDDELL



MANDEVILLE



NORRIS



RUSHIN

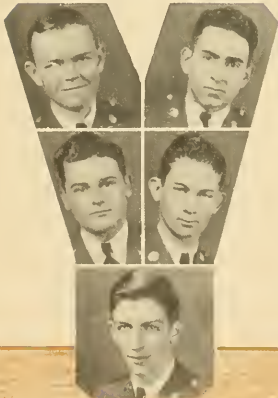
MEMBERS

ADAMSON  
BEARD  
BURCH  
BURRELL  
BURT  
CASTELLAW

CHAMBERS  
FARRAR  
FIELDS  
FORRER  
FOWLER  
FUNDERBURK

GILLELAND  
HENDERSON  
HOLDT  
HULME  
LIPSCOMB  
MANLEY

MARTIN  
ORR  
PARKER, G. R.  
PARKER, J. K.  
THOMASON  
WEEKS, L. D.





# Y.W.C.A.



CORA BELLE LANCASTER  
President

## CABINET

### MEMBERS



BANKS



CARROLL



LANGFORD, C.



LAVENDER



MCCURDY



TURNER

# Speech Forum

Motto: Words Move the World

Founded by and for the Students of N.G.C. in an effort to develop a deeper interest in public speaking



RICE  
Vice-President



NORRIS, W. F.  
President



KARDELL  
Secretary and Treasurer

## MEMBERS



BOWERS



BURT



CATES



FARRAR



GILLELAND



KENDALL



LIPSCOMB



MANDEVILLE



MILLICAN



NUCKOLLS



RUSHIN



SELPH



THOMASON



TURNER



WILLIAMS, H. G.



WILSON



WYNN

# Cadet Bugler

VOL. 2 - NO. 5

OCT. 8, 1935

## BUGLER STAFF SELECTED

By popular vote the following have been selected to edit this year's "Bugler," the official organ of North Georgia College.

**ALLEN THOMASON**  
Editor-in-Chief

**WILLIAM F. NORRIS**  
Business Manager

### Reporters:

**BURT, FRIER, LIDDELL,  
MANDERVILLE, RICE,  
RUSHIN and WYNN**

*Crack  
LIVES*

*WYNN'S  
WIND*



THOMASON



NORRIS



BURT



RICE



FRIER



LIDDELL



MANDERVILLE



RUSHIN



WYNN





# REX CLUB

Founded at North Georgia College, 1917.  
MOTTO: The Wreath Is For Those Who Contend.  
COLORS: Gold and Black.  
FLOWER: Tuberose.



**BOWERS**  
President



**DISMUKES**



**BURCH**  
Vice-President



**BURT**  
Secretary

## MEMBERS



**HOLTZCLAW**



**KARDELL**



**LIDDELL**  
Treasurer



**MANLEY**



**SKELTON, E.**



**THOMASON**



**TURNER**



**WEEKS, D.**



**WYNN**



**ANDREWS**



**ALFORD**



**BONNER, J. M.**



**CATES**



**FARRAR**



**HOLCOMB, B. F.**



**NUCKOLLS**



**RICE**

# PLEDGES



ADAMS



BONNER, W. H.



BYRD



BURRELL



CLARK



DANCE



FIELD



GILLELAND



GOOLSBY



HAMBRIGHT



HENDON



HENSON



HOLDT



HULME



JACKSON



JOHNS



McCLUNG



McGAHEE



McWHORTER



MORGAN



MANDEVILLE



PARKER, G. R.



PENDEGRASS



PITTS, C.



REED



RUSHIN



SELPH



SKELTON, M.



STRONG



WILLIAMS, J. M.





# SIGMA THETA

Founded at North Georgia College, 1934.

MOTTO: Semper Summum Bonum.

COLORS: Blue and Gold.

FLOWER: Orchid.



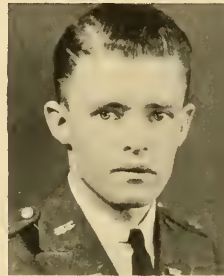
BOOTH, D.



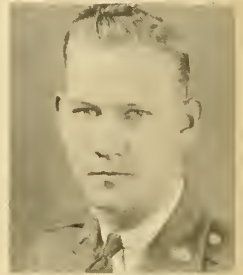
McKENZIE  
President



BOGGS  
Vice-President



BOLDING  
Secretary



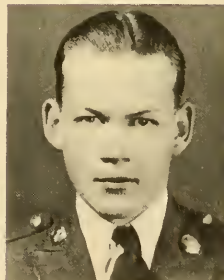
STREYER  
Treasurer



BEALL



BRYAN



CARLTON



CHAMBERS



DAVIS, C. M.



McCANTS



MULLINS



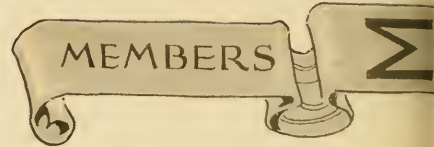
NORRIS, W. F.



TEASLEY



WATSON, W.







ADAIR



BLANTON



BOOTH, M.



CASH



CASTELLAW



CORBITT



DUNCAN



EVANS, W. S.



GLOVER



GORNITO



GREER



GRINER



HARRIS



JENKINS



KENDALL



KNIGHT



PARKER, J. K.



NORRIS, H. D.



NORRIS, H. J.



ROGERS



SPRATLIN



TOWNSEND



WALTON



WILLIAMS, H. G.



WILLIAMS, G. W.





CARLTON



TURNER  
President



CARROLL  
Secretary-Treasurer



GLASS



HEMPHILL



JOHNSON



KELLAR



LANGFORD, C.



LAVENDER



LUNDY



MCCURDY



MCDONALD



OGLESBY



SAPPINGTON



STROTHER

# Home

# Economics

# Club



CARROLL  
President



McDONALD  
Secretary



LANCASTER  
Treasurer

## MEMBERS

BANKS  
BARRETT  
CORDELL  
CRAVEN  
COUCH  
DRISKELL  
DYER  
EDWARDS  
ELLER

FITTS  
GARRETT, F. B.  
GARRETT, J.  
GILBERT, B.  
GILBERT, V.  
GLASS  
HAMMOND  
HEAD  
HEMPHILL

HOUSLEY  
KELLAR  
KITCHINGS  
LANE  
LANGFORD, C.  
LAVENDER  
MARTIN  
McCURDY  
MOON

OGLESBY  
O'SHIELDS  
PURCELL  
RIDEN  
SEABOLT  
SMITH  
STANCIL  
THOMSON  
THOMAS







# SERGEANTS CLUB



MOTTO:  
"Hold That Line."

FLOWER:  
Cherry Blossom

COLORS:

Black and White.

Founded at North Georgia College in 1935.



BOWERS  
President



BOGGS  
Secretary and Treasurer



FUNDERBURK  
Chaplain

McKENZIE  
Vice-President.



SERGEANT McCONNELL  
Faculty Adviser



HENDON  
Sergeant-at-Arms



BURT



CLARKE



DANCE



DAVIS



HULME



McCLUNG



MAYS



RUSSELL



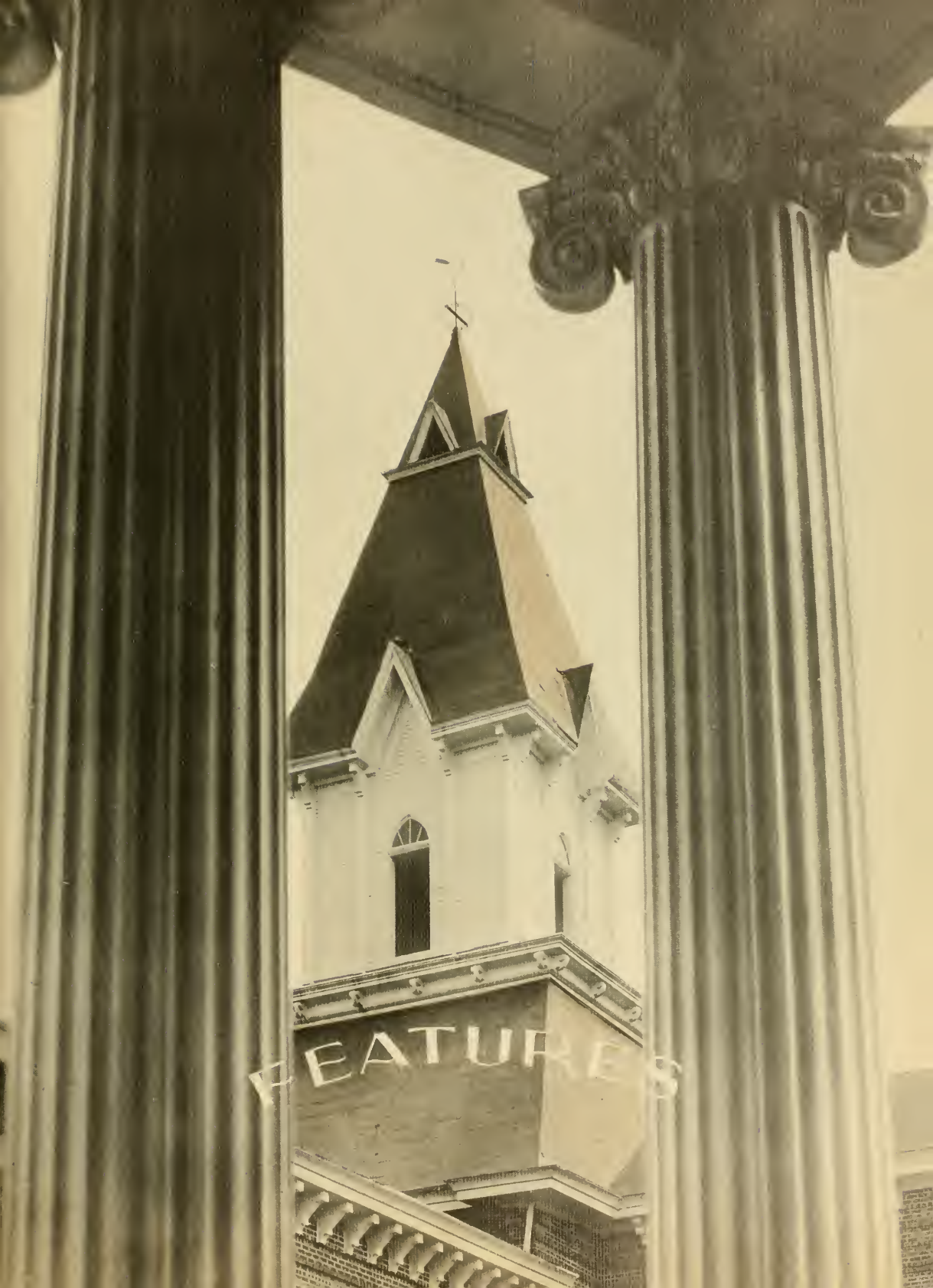
STEPHENSON



STREYER



TURNER



FEATURES



*Mrs. Blanche P. Manley*

*Boston, Georgia*

SPONSOR, CYCLOPS





*Miss Ellen Groover*

*Boston, Georgia*

SPONSOR, STUDENT BODY



*Mrs. J. G. Liddell*

*Tifton, Georgia*

SPONSOR, OFFICERS CLUB



*Miss Elinor Johnson*

*Jefferson, Georgia*

MISS N. G. C.





*Miss Juanita Conoley*

*Thomasville, Georgia*

SPONSOR, COMPANY "A"



*Miss Archie Carithers*

*Fort Valley, Georgia*

SPONSOR, COMPANY "B"



*Miss Frances Turner*

*Nicholson, Georgia*

SPONSOR, BAND





*Miss Virginia Noble*

*Ellenwood, Georgia*

SPONSOR, STAFF



*Mrs. Mandlee B. Bowers*

*Toccoa, Georgia*

SPONSOR, REX CLUB



*Miss Jane Sappington*

*McDonough, Georgia*

SPONSOR, SIGMA THETA





*Miss Sue Pope*

*Zebulon, Georgia*

SPONSOR, SOPHOMORE CLASS



*Miss Sybil Wynn*

*Jonesboro, Georgia*

SPONSOR, Y. M. C. A.



MANLEY  
Most Representative



BOWERS  
Best All-round  
Most Popular

# WHOOZE-WHOOO



O'SHIELDS  
Prettiest—Neatest  
Most Dignified



JOHNSON  
Most Representative  
Best All-round  
Most Popular



LIDDELL  
Most Executive  
Most Dignified



TURNER  
Most Executive  
Best Sport



MANDERVILLE  
Smartest With  
Application



OGLESBY  
Smartest With  
Application



HOLDT  
Smartest Without  
Application



SAPPINGTON  
Smartest Without  
Application  
Most Original  
Best Dancer



WYTHE  
Best Dressed



RUSHIN  
Best Dancer



BOOTH  
Most Original



NORRIS  
Most Courteous



BANKS  
Most Courteous



MOST  
CONCEITED



FIELDS  
Best Sport  
Biggest Bull-Shooter



WILLIAMS  
Best Looking



BOOTH  
Most Popular  
Faculty Membe



BOLDING  
Neatest  
Best Dressed



BURT  
Biggest Gold Brick



HARRIS  
Most Athletic



HOLTZCLAW  
Most Military  
Biggest Heart-Breaker

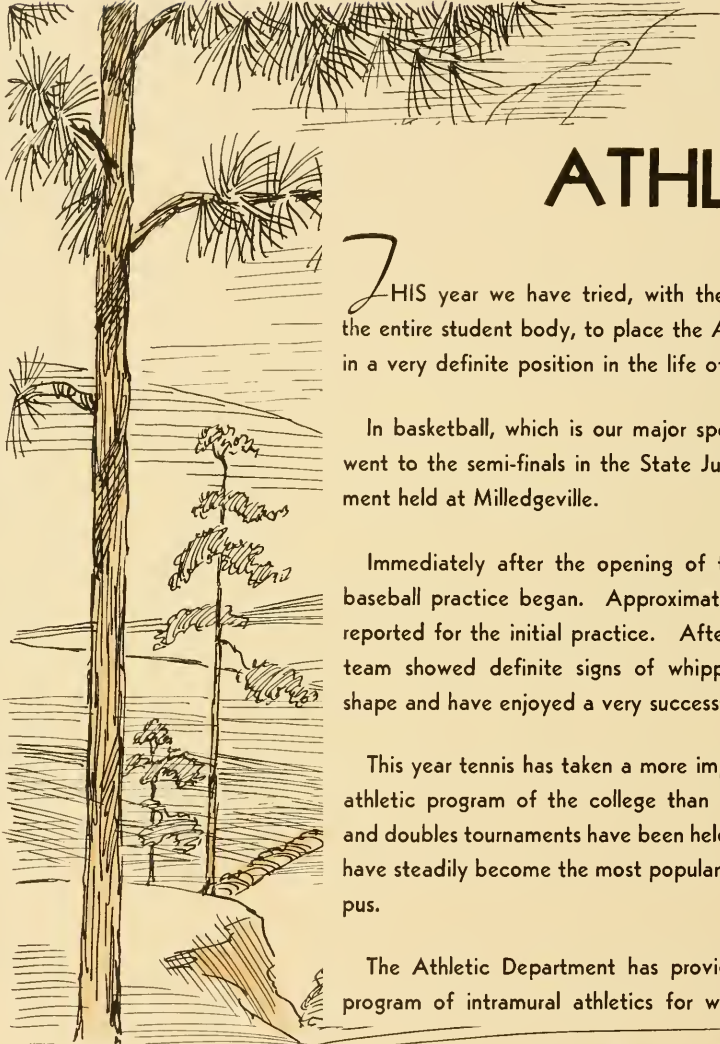
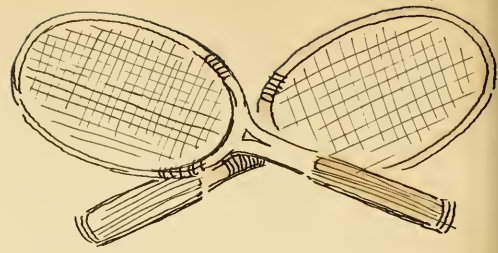


WANSLEY  
Best Athlete



# ATHLETICS





# ATHLETICS

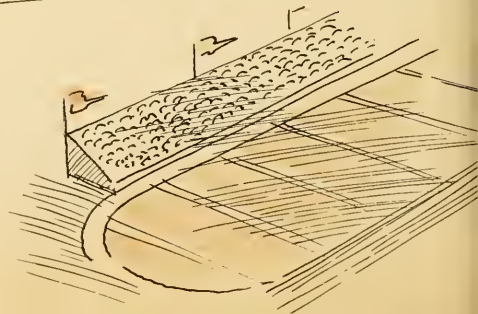
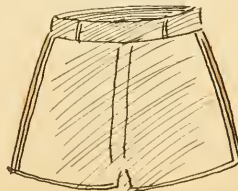
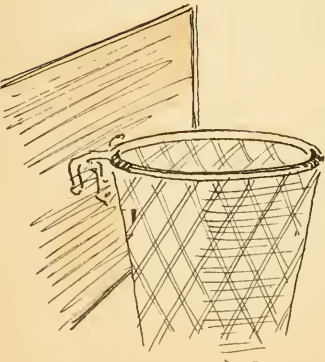
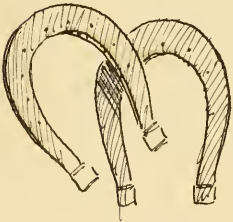
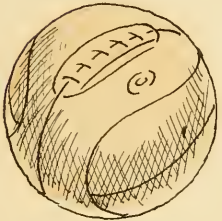
**T**HIS year we have tried, with the wonderful help of the entire student body, to place the Athletic Department in a very definite position in the life of the college.

In basketball, which is our major sport at N. G. C., we went to the semi-finals in the State Junior College tournament held at Milledgeville.

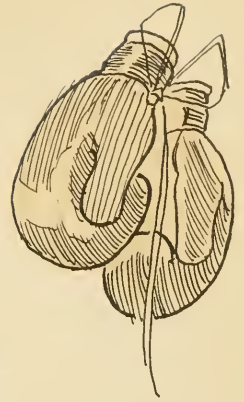
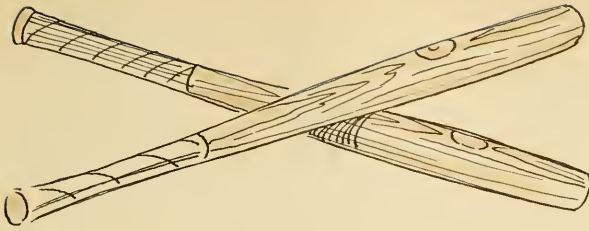
Immediately after the opening of the Spring Quarter baseball practice began. Approximately fifty candidates reported for the initial practice. After the first week the team showed definite signs of whipping itself into fine shape and have enjoyed a very successful season.

This year tennis has taken a more important place in the athletic program of the college than heretofore. Single and doubles tournaments have been held. The tennis courts have steadily become the most popular retreat on the campus.

The Athletic Department has provided a well-rounded program of intramural athletics for women students.







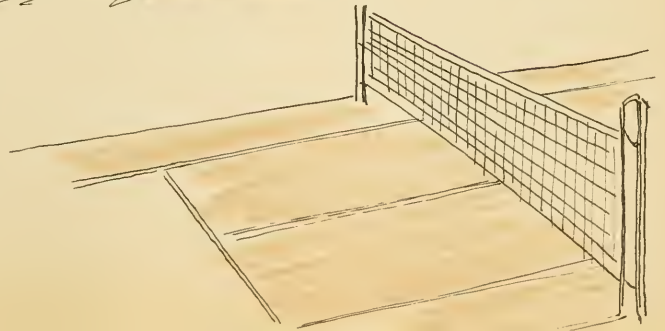
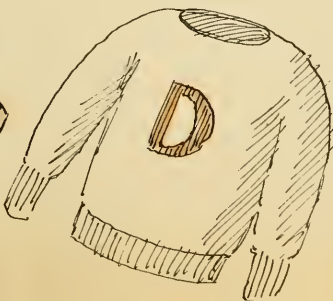
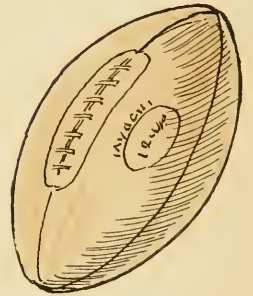
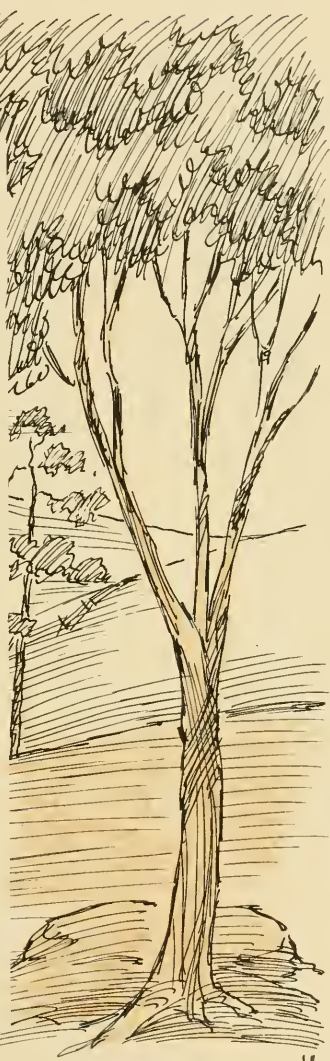
# at N. G. C.

An effort to provide for the physical education of all co-eds the program has been divided into four parts, namely: Gym, Tennis, Softball, and Horseshoes. The girls in each division compete with one another, and field days for all are held at frequent intervals.

For years it has been customary to have a "Military Day" just preceding commencement. This year an "Athletic Day" was observed and on that day keen competition was offered in the various track and field events for both cadets and co-eds, including tennis matches, softball games, and many other athletic recreations.

Possibly the year hasn't brought forth as many victories in the various sports as could be hoped for, but nevertheless the true N. G. C. spirit has been self-evident at all times.

It is the belief of the Athletic Department that this year has shown a marked improvement in the general athletic program of the college, and it is sincerely hoped that those who have participated in any form of athletics this year may in years to come derive a real benefit from their experiences here.





# BASKET



MARTIN  
Center



HOOD  
Forward



HOLDT  
Forward



WHITEN  
Guard



OLIVER  
Guard

## SCHEDULE

N. G. C. . . . .	36—Clarksville Athletic Club . . .	35
N. G. C. . . . .	32—Hiawasee College . . . . .	34
N. G. C. . . . .	28—Hiawasee College . . . . .	23
N. G. C. . . . .	36—Monroe A. & M. . . . .	25
N. G. C. . . . .	16—Monroe A. & M. . . . .	24
N. G. C. . . . .	32—Piedmont College . . . . .	37
N. G. C. . . . .	61—Cleveland Athletic Club . . . . .	22
N. G. C. . . . .	32—Piedmont College . . . . .	39
N. G. C. . . . .	35—Brewton-Parker Institute . . . . .	41



WANSLEY, Captain  
Guard



# BALL



RUSSELL  
Guard



STEPHENSON  
Guard



HENSON  
Forward



UPCHURCH  
Forward



JARRETT  
Center

N. G. C. . . . .	39—Young Harris College . . . . .	33
N. G. C. . . . .	36—West Georgia College . . . . .	34
N. G. C. . . . .	43—Clarksville Athletic Club . . . . .	52
N. G. C. . . . .	25—Hiwassee College . . . . .	40
N. G. C. . . . .	35—Hiwassee College . . . . .	25
N. G. C. . . . .	62—West Georgia College . . . . .	41

### THE TOURNAMENT

N. G. C. . . . .	38—Bowdon College . . . . .	37
N. G. C. . . . .	22—Abraham-Baldwin College . . . . .	34
N. G. C. . . . .	29—Brewton-Parker Institute . . . . .	37



DANCE  
Manager



# BASE



**DRANE**  
First Base



**WYNN**  
Pitcher



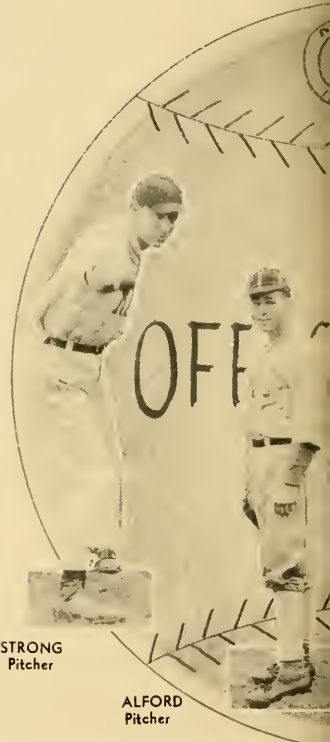
**STEPHENSON**  
Captain  
Outfield



**HENSON**  
Second Base



**OLIVER**  
Third Base



**STRONG**  
Pitcher

**ALFORD**  
Pitcher



**MURPHY**  
Manager



**LANE**  
Shortstop



SCHEDULE	
Piedmont . . . . .	April 17
Gordon . . . . .	April 22
Gordon . . . . .	April 23
West Georgia . . . . .	April 24
West Georgia . . . . .	April 25
Young Harris . . . . .	April 28



# BALL

West Georgia . . . . .	May 1
West Georgia . . . . .	May 2
Young Harris . . . . .	May 5
Piedmont . . . . .	May 9
Gordon . . . . .	May 16
Gordon . . . . .	May 17



RUSSELL  
Co-Captain  
Catcher



PITTS  
Third Base



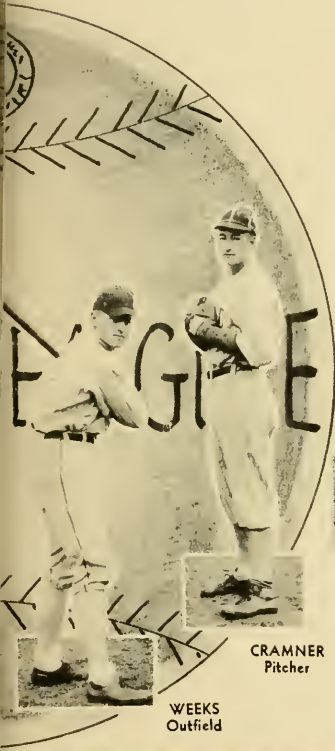
MARTIN  
First Base



UPCHURCH  
Outfield



JARRETT  
Outfield



CRAMNER  
Pitcher

WEEKS  
Outfield



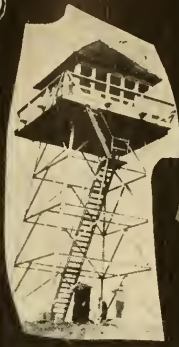
CASTELLAW  
Outfield



HENDON  
Assistant Manager

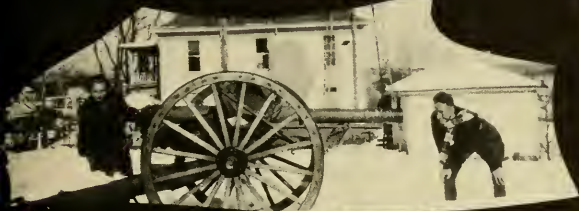
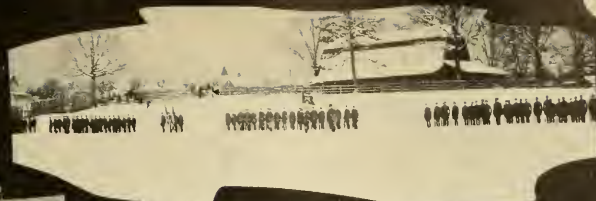


# SNAP





# SHOTS





JOE PHILLIPS

FANCY *and* STAPLE  
GROCERIES

CANDIES

FRUITS

DAHLONEGA

GEORGIA

*Compliments*

*of*

ZIMMER'S MOUNTAIN  
LODGE

DAHLONEGA

GEORGIA



*Compliments*

*of*

LIPSCOMB DRUG CO.

PHONE 42

DAHLONEGA

GEORGIA

CITY SHOE SHOP

W. A. HOUSLEY, Proprietor

"ON THE SQUARE"

DAHLONEGA

GEORGIA

ICE CREAM

FRUIT

## COLLEGE INN

HOYT McCLURE, Proprietor

*"Where Friends Meet"*

for

MEALS  
CANDY

~ POOL ~

CIGARETTES  
DRINKS



TIRES

ACCESSORIES

TUBES

## PALMER-GURLEY

ACETYLENE  
WELDING



BODY  
REPAIRS

AUTOMOTIVE AND WRECKER SERVICE

DAHLONEGA

GEORGIA



# JOHN H. MOORE & SON



Dry Goods



Fancy and Staple  
Groceries



MEAT MARKET  
SHOE DEPT.

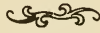
GENERAL  
MERCHANDISE







HOMER  
WESTMORELAND'S



We Serve

WOOD'S  
ICE CREAM



Soda Fount



Candies



*Films Sold and Developed*



# WOODY'S BARBER SHOP

SHAVES  
TRIMS TONICS  
HAIR CUTS MASSAGES

*"Best in the County"*

DAHLONEGA ✓ GEORGIA

# West End Pressing Club

HAROLD WEST, Proprietor

*"We Clean Everything But Your  
Rifle and Your Sins"*

LAUNDRY  
DRY CLEANING PRESSING

Phone 25

DAHLONEGA ✓ GEORGIA

# Dahlonega-Atlanta BUS LINE

	A.M.	P.M.
Leave Dahlonega . . .	8:00	4:00
Arrive Atlanta . . .	10:00	6:00

Leave Atlanta . . .	8:00	3:00
Arrive Dahlonega . . .	12 Noon	7:00

# The BANK of DAHLONEGA

*"A Bank You Can Bank On"*

Courtesy ✓ ✓  
✓ ✓ Service ✓ ✓  
✓ ✓ Efficiency

GOOD LUCK TO YOU . . .

*Compliments of*

**HENRY W. MOORE**

DAHLONEGA

GEORGIA



*Compliments  
of*

**JOHNNIE MOORE'S SERVICE STATION  
CARS FOR HIRE**

DAHLONEGA

GEORGIA





SODA  
FOUNT

SOUTHERN DAIRIES  
ICE CREAM

**SMITH'S**

VERNON H. SMITH, Prop.  
DAHLONEGA, GA.

STUDENTS:

In this final effort to show my appreciation for your patronage this year may I say to the Sophomores, "So long and good luck;" to the Freshmen, "So long 'til next year when 'Catfish' can again serve you with the same pleasant dealings which have been ours this year." May I always be considered the same ole "Students' Friend" and may our Soda Fount serving you Delicious Southern Dairies ice cream, our Private Booths and complete line of School Supplies always furnish your needs and continue to meet with your approval.

Sincerely,

*Vernon H. Smith,*



*Photography*

**GASPAR-WARE**

ATLANTA



# *In Printing*

THERE ARE MANY REASONS WHY  
SUCCESSFUL ANNUALS REQUIRE  
THE SERVICES OF EXPERIENCED  
AND EXPERT CRAFTSMEN

## FOOTE & DAVIES CO.

HAVE THESE SERVICES . . . *and*  
*the most necessary components of*  
*all really fine books including*  
A SPECIAL ANNUAL SALES  
AND SERVICE ORGANIZATION  
CREATIVE DESIGNERS AND  
LAYOUT ARTISTS • ABUNDANT  
EQUIPMENT . . . MODERN AND  
COMPLETE • PRICES REPRESENTING  
MAXIMUM IN VALUE



ATLANTA  
GEORGIA























