

NORTH GEORGIA COLLEGE



3 0642 00152 7327

*Cyclops*  
1942

# FOR REFERENCE

NOT TO BE TAKEN FROM THIS ROOM

CAT. NO. 1935

LIBRARY BUREAU



## North Georgia College Library DALLONEGA, GA.

1. Books may be kept two weeks and may be renewed once for the same period, except 7 day books.
2. A fine of two cents a day will be charged on each book which is not returned according to the above rule.
3. Not more than two books may be taken out by one person at the same time.
4. All injuries to books beyond reasonable wear, and all losses shall be made good to the satisfaction of the librarian.
5. Each borrower is held responsible for books drawn on his card and for all fines accruing on the same.

L 9 234-48317-17







THE  
1942  
★ CYCLOPS

PUBLISHED ANNUALLY BY THE CORPS OF CADETS AND COEDS OF

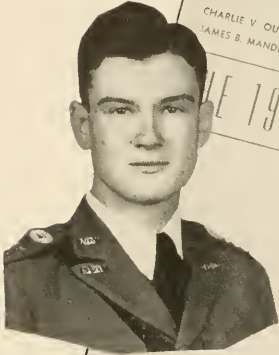
NORTH GEORGIA COLLEGE

*"Georgia's West Point"*

DAHLONEGA, GEORGIA



*Charlie V. Ouzts*



CHARLIE V. OUZTS  
JAMES B. MANDEVILLE

THE 1942 CYCLOPS

Editor  
Business Manager

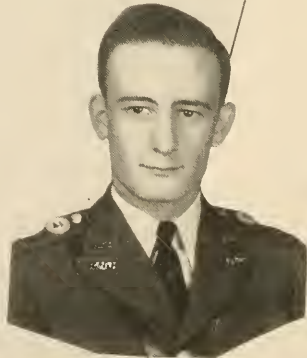
★ ★ Annual Publication of North Georgia College  
DAHLONEGA, GEORGIA

We are now ready to raise the curtain on the 1942 CYCLOPS, showing numerous excerpts from the happy collegiate lives of the cadets and co-eds. Every shift of scene brings a new activity in which students have participated.

It is our ambition that this annual shall serve as a storehouse of memory, and in later years shall bring vividly to mind the friendships, disappointments, joys, and heartaches of the days at North Georgia College.

The 1942 CYCLOPS has endeavored to make both the comedies and the tragedies live on with a personal touch, a candid appeal and a lasting memory.

Sincerely,  
*C.V. Ouzts*  
*J. B. Mandville*



*James B. Mandville*



# DEDICATION

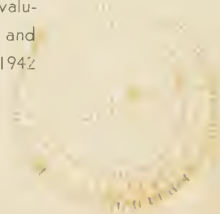
THE  
PRESIDENT

JONATHAN  
CLARK  
ROGERS



PRESIDENT ROGERS

"Dr. Rogers" as he is known to all students, is the typification of all that students want as President of their school. It is in appreciation of his invaluable services to our institution—his leadership and courage in carrying us ever forward—that the 1942 CYCLOPS is dedicated.



# ORDER OF PRESENTATION

STAGE...

SCENE...

1. presenting . . . . . the COLLEGE
2. introducing . . . . . the CLASSES
3. parading . . . . . the CADETS
4. developing . . . . . the ATHLETES
5. viewing . . . . . the ACTIVITIES
6. sponsoring . . . . . the FEATURES



PRESENTING...



...THE COLLEGE



The Campus



Chapel and Dining Hall

" I Love Thy Classic Halls"



Library





Tower



"I Love Thy Sacred Walls"

Price Memorial and Library





Barnes Hall



Band House





Barracks

Sanford Hall



# THE FACULTY



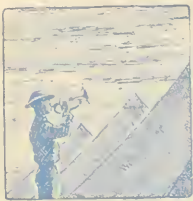
JONATHAN CLARK ROGERS, B.S., A.M., D.Ed.  
President

ERMA HOLLOWAY, A.B.  
Dean of Women



J. C. SIRMONS, Ph.B., A.M.  
Dean





First row, left to right: Angelsberg,  
 Anthony, Barnes, Black. . . . Second  
 row: Booth, Bruce, Cain, Carroll. . . .  
 Third row: Carson, Clarke, Craig, Da-  
 vis.

# THE FACULTY

FERDINAND ANGELSBURG  
 Director of Band

JOHN DURHAM ANTHONY, B.S., A.M.  
 Professor of Biology

JOHN C. BARNES, B.S.  
 Professor of Mathematics

RAY H. BLACK  
 Business Manager

W. DESMOND BOOTH, B.S., A.M.  
 Instructor in English

SARA BRUCE, B.S.  
 Instructor in Physical Education

ANDREW W. CAIN, A.B., M.A.  
 Professor of Social Science

JULIA CARROLL, B.S.  
 Secretary

CHARLES CARSON, B.S., M.S.  
 Professor of Physics

WILLIAM E. CLARKE, A.B., M.A.  
 Instructor in English

MATTIE CRAIG  
 Manager of Bookstore

TREADWELL DAVIS, B.S., M.A.  
 Instructor in Social Science



# THE FACULTY



CAMILLUS J. DISMUKES, A.B., A.M.  
Professor of French and Spanish

ROBERT ELMER, A.B., M.A.  
Instructor in English

BERT H. FLANDERS, A.B., A.M.  
Professor of English

HARRY B. FORESTER, B.S., Ph.D.  
Professor of Biology

W. O. FOSTER,  
Instructor in Social Science

LORIMER B. FREEMAN, B.S.C., M.S.C.  
Professor of Commerce

H. H. GILBERT, B.S.  
Bookkeeper

WILLIAM OSCAR HAMPTON, B.S., M.S., Ph.D.  
Director of Guidance and Instructor in Education

CHARLES F. HUDGINS, B.S., M.S.  
Assistant Director of Guidance and Instructor in  
Education

MAJOR P. M. HUTCHERSON, INFANTRY, U.S.A.  
Commandant  
Assistant Professor of Military Science and Tactics

DORSEY JONES  
Assistant Coach

R. G. MAGUIRE, A.B., M.S.  
Instructor in Physical Science



The Youngs, Yagers, Maguires, and Prof. Davis sit one out  
at the Pan-Hellenic Dance.



First row, left to right: Dismukes, Elmer, Flanders, Forester, Foster, Freeman. . . . Second row: Gilbert, Hampton,  
Hudgins, Hutcherson, Jones, Maguire.



EVELYN MANN, A.B.  
Assistant Librarian

COLONEL J. E. MATTHEWS, INFANTRY U. S. A.  
Professor of Military Science and Tactics

CAPTAIN RICHARD S. McCONNELL, INFANTRY,  
U. S. A.  
Assistant Professor of Military Science and Tactics



SERGEANT GRADY McCRIMMON, INFANTRY  
U. S. A.  
Assistant to the P. M. S. and T.

JANE McDANIEL, A.B., A.B. in L.S.  
Librarian

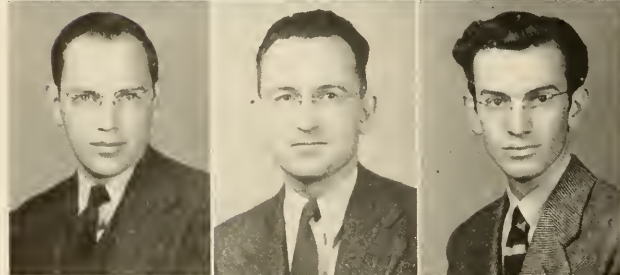
BETH NORMAN, B.S.J.  
Secretary



NEWTON OAKES, B.S., M.A.  
Professor of Commerce

VERNELLE RAY, B.S.H.E., A. M.  
Professor of Home Economics

ROBERT SCANLAN, S.M., S.B.  
Professor of Engineering



J. B. SCEARCE, B.S.  
Director of Physical Education

J. C. SIMMS, B.S., M.S., Ph.D.  
Professor of Chemistry

ANDREW SPARKS, A.B., M.A.  
Instructor in English

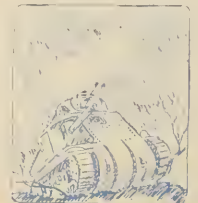


CHARLES M. YAGER, B.S. in M.E., M.Ed.  
Instructor in Mathematics

WILL D. YOUNG, A.B., A.M.  
Registrar  
Professor of Social Science

AVIS WESTON, B.S.  
Dietitian

First row, left to right: Mann, Matthews, McConnell. . . . Second row: McCrimmon, McDaniel, Norman. . . . Third row: Oakes, Ray, Scanlan. . . . Fourth row: Scearce, Simms, Sparks. . . . Fifth row: Yager, Young, Weston.

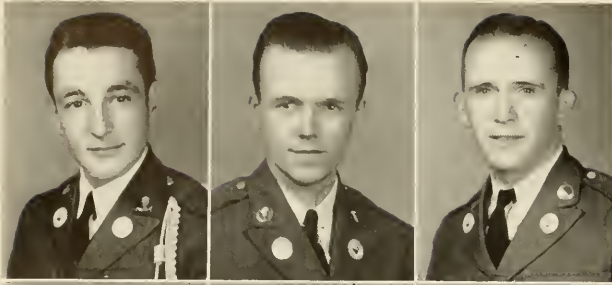


# INTRODUCING...

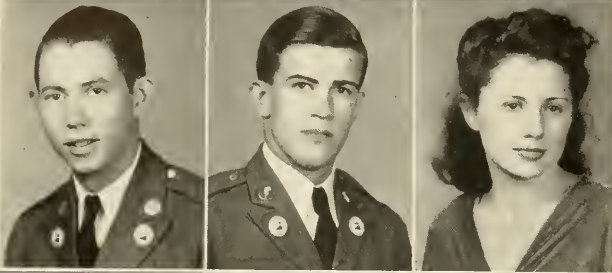


Left to right: FRANK THOMAS, President of the Student Body; J. W. STARR, President of the Sophomore Class; CHARLIE LYLE, Treasurer; BEN GRIMES, Secretary; JOHN IRWIN, Vice-President.

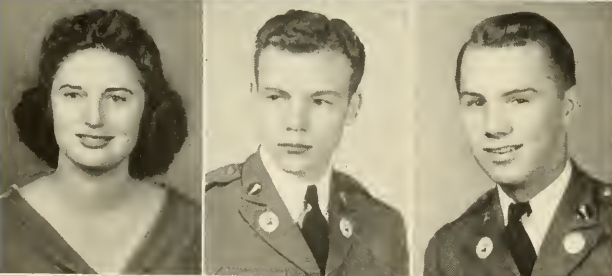
# ...THE CLASSES



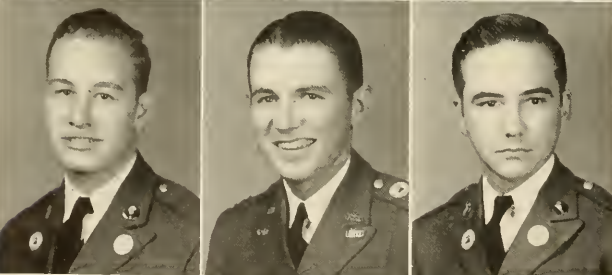
**STEVE BRANSON ABSTON**, Rome, Ga. . . . Y. M. C. A. 1, 2; "D" Club 2; Band. • **JIMMY RHODES ADAMS**, Atlanta, Ga. . . . Y. M. C. A. 2; Rex 2; Rifle Team 1, 2; A Company • **WALTER ADAMS**, Canton, Ga. . . . Y. M. C. A. 1; Treasurer "D" Club 2; Varsity Basketball 1, 2; Sergeants' Club 2; Sergeant, B Company



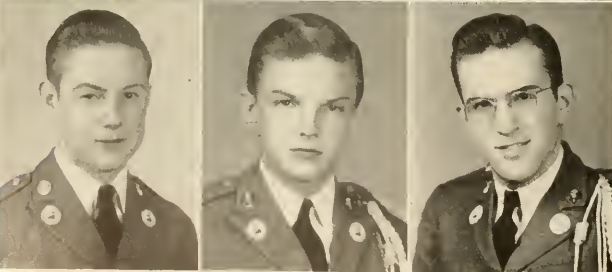
**EARL ALFORD, JR.**, Sylvester, Ga. . . . Y. M. C. A. 1, 2; Rex Member 1, President 2; Sergeants' Club 2; Pan-Hellenic Council 2; Sergeant, A Company. • **HANES ALLEN**, Covington, Ga. . . . Y. M. C. A. 1, 2; Rex 1, 2; Sergeants' Club 2; Sergeant, A Company. • **ESTELLE ANDERSON**, Dahlonga, Ga. . . . Y. W. C. A. 2; Home Economics Club 2; Rec Club 2; Phi Omicron 2.



**EUCLEDE ARCHER**, Greensboro, Ga. . . . Y. W. C. A. 2; Home Economics Club 2; Hippolytan 2. • **AGNEW ANDREWS**, Tifton, Ga. . . . CYCLOPS Staff 2; Vice-President Sigma Theta Pledges 1, Member 2; Science Club 2; Sergeants' Club 2; Sergeant, C Company. • **NEAL ASH**, Cleveland, Ga. . . . Sergeants' Club 2; Sergeant, A Company.



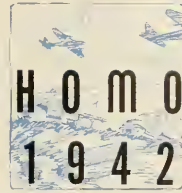
**CHARLES ATKINSON**, Garfield, Ga. . . . Y. M. C. A. 1; A Company. • **HERBERT AVERY**, Stone Mountain, Ga.; Y. M. C. A. 1, 2; Rifle Team 1; Officers' Club 2; First Lieutenant, B Company. • **ERNEST AYERS**, Chamblee, Ga. . . . Y. M. C. A. 1, 2; Rex 1, 2; D Company.



**TOMMY BARKSDALE**, Conyers, Ga. . . . Y. M. C. A. 1, 2; BUGLER Staff 2; CYCLOPS Staff 2; Sigma Theta 1, 2; Cheerleader 2; Sergeants' Club 2; Sergeant, C Company. • **WILLIAM BARR**, Cedartown, Ga. . . . Y. M. C. A. 2; Treasurer, Sergeants' Club 2; First Sergeant, Band. • **JOHN ROBERT BARROWS**, Atlanta, Ga. . . . Men's Glee Club 1, 2; Sigma Theta 1, 2; Secretary Freshman Class 1; Band.

First row, left to right: Abston, Adams, J. R., Adams, W. A. . . .  
 Second row: Alford, Allen, Anderson. . . . Third row: Archer, An-  
 drews, Ash. . . . Fourth row: Atkinson, Avery, Ayers. . . . Fifth row:  
 Barksdale, Barr, Barrows.

# SOPHOMORES



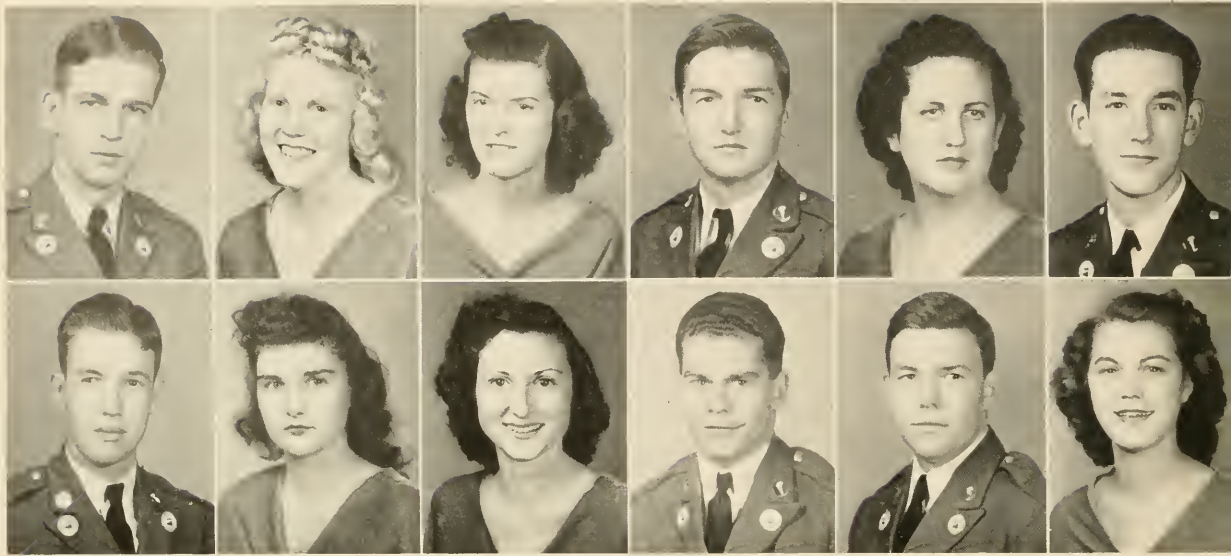
**MATTIE LOU BARTON**, Murrayville, Ga. . . . Women's Glee Club 1, 2; Phi Omicron 2. • **PAUL BASS**, Quitman, Ga. . . . Y. M. C. A. 2; Boxing Champion 1; Officers' Club 2; Second Lieutenant, D Company. • **ROBERT BATEMAN**, Macon, Ga. . . . Y. M. C. A. 1, 2; Dean's List 2, 3; Rex 1, 2; Sergeants' Club 2; Sergeant, A Company. • **CHARLES WILLARD BATES**, Decatur, Ga. . . . Y. M. C. A. 2; Sergeants' Club 2; Sergeant, D Company.

**GEORGE WALTER BEASLEY**, Lavonia, Ga. . . . Y. M. C. A. 2; BUGLER Staff 1, 2; CYCLOPS Staff 2; Camera Club 1; Officers' Club 2; Second Lieutenant, Band. • **EMORY ALEXANDER BECKHAM**, Dublin, Ga. . . . Rex 1; A Company. • **RICHARD BECKHAM**, Molena, Ga. . . . Y. M. C. A. 1, 2; C Company. • **WILLIAM BIRD**, Avondale Estates, Ga. . . . Y. M. C. A. 1, 2; Rex 1; Sergeants' Club 2; Sergeant, B Company.

**CLIFFORD BLANCHARD**, Wadley, Ga. . . . Y. M. C. A. 1, 2; CYCLOPS Staff 1, 2; Sigma Theta 1; Sergeant-at-Arms 2; Officers' Club 2; Dean's List 1, 2; Second Lieutenant, C Company. • **RUSSELL BOLING**, Canton, Ga. . . . Y. M. C. A. 2; "D" Club 2; Sergeants' Club 2; Basketball Manager 1, 2; Sergeant, C Company. • **WALLACE BRACKETT**, Crandall, Ga. . . . Y. M. C. A. 2; Officers' Club 2; First Lieutenant, B Company. • **ODOLLA BRAY**, Clayton, Ga. . . . Y. W. C. A. 1, 2; Rec Club 1, 2; Trahytan 2.



First row, left to right: Barton, Bass, Bateman, Bates. . . . Second row: Beasley, Beckham, E., Beckham, R., Bird. . . . Third row: Blanchard, Boling, Brackett, Bray.



First row, left to right: Bridges, Brooks, Brookshire, Brown, A., Brown, B., Buxton. . . . Second row: Calhoun, Campbell, Champion, Clark, Cochran, Collins, L.

**MARION LANIER BRIDGES**, Sumner, Ga. . . . Y. M. C. A. 1, 2; Dramatic Club 1, 2; CYCLOPS Staff 2; Rex 1, 2; Dean's List 2, 3; Sergeants' Club 2; Sergeant, A Company. • **BETH BROOKS**, Cumming, Ga. . . . Y. W. C. A. 1, 2; Science Club 1; Rec Club 1, 2; Hippolytan 2. • **JOHNNIE BROOKSHIRE**, Winder, Ga. . . . Y. W. C. A. 1, 2; Rec Club 1, 2; Hippolytan 2. • **ALVAH BROWN**, Summit, Ga. . . . Y. M. C. A. 1, 2; Sergeants' Club 2; Sergeant, A Company.

**BETTY LOUISE BROWN**, Nelson, Ga. . . . Rec Club 2; Hippolytan 2. • **HAMMOND BUXTON**, Byromville, Ga. . . . Y. M. C. A. 2; Dean's List 2; B Company. • **DAYTON CALHOUN, JR.**, Hamilton, Ga. . . . Y. M. C. A. 2; Rex 1, 2; A Company. • **ELEANOR CAMPBELL**, Commerce, Ga. . . . Y. W. C. A. 1, 2; Trahlytan 2; Dean's List 1, 2.

**FRANCES CHAMPION**, Point Peter, Ga. . . . Y. W. C. A. 1, 2; Hippolytan 2. • **ROBERT MORRIS CLARK**, Atlanta, Ga. . . . Y. M. C. A. 2; Rex 1; C Company. • **WILLIAM COCHRAN**, Covington, Ga. . . . Y. M. C. A. 1, 2; Rex 1, 2; C Company. • **LOUISE COLLINS**, Griffin, Ga. . . . Y. W. C. A. 1, 2; Dramatic Club 1; Home Economics Club 1, Secretary-Treasurer 2; Rec Club 1, 2; Vice-President Mercurian 2.



# SOPHOMORES

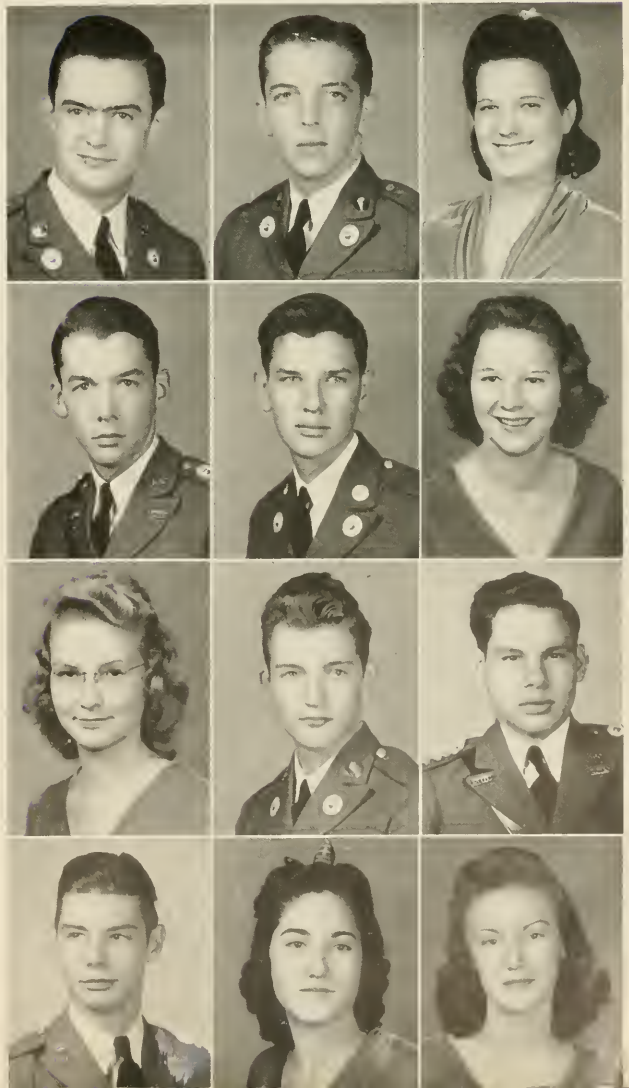
## 1942

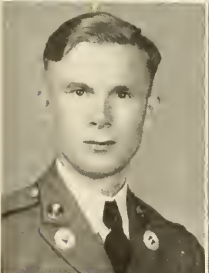
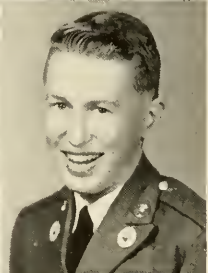
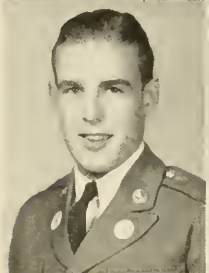
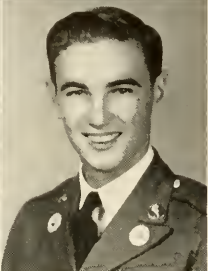
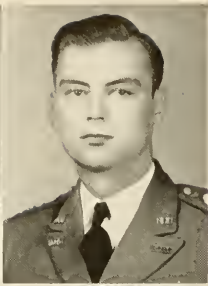
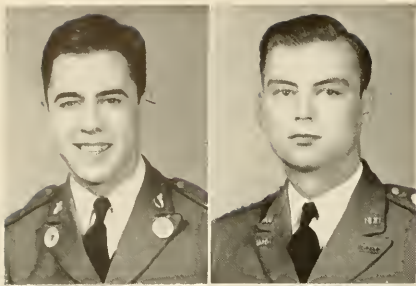
**PRESTON COLLINS**, Macon, Ga. . . . Y. M. C. A. 1, 2; Dramatic Club 1, 2; Cheerleader; C Company. • **HAL CONNER**, Mt. Vernon, Ga. . . . Sergeants Club 2; Sergeant, D Company. • **ELISE CORRY**, Greensboro, Ga. . . . Y. W. C. A. 1, Cabinet 2; Rec Club 1, 2; Home Economics Club 1; Hippolytan 2. • **ERNEST CROWLEY**, Albany, Ga. . . . Y. M. C. A. 1, 2; "D" Club, 1, 2; Rex 1, 2; Officers' Club 2; Boys' Athletic Council 2; Athletic Officer 2; Tennis Team 1, 2; Second Lieutenant, A Company.

**DELOME CUMBAA, JR.**, Columbus, Ga. . . . Y. M. C. A. 1, 2; Sergeants' Club 2; Sergeant, B Company. • **SHIRLEY SUE CUTHBERTSON**, Copperhill, Tenn. . . . Y. W. C. A. 1, 2; Dramatic Club 1, 2; Science Club 1; Home Economics Club 1, 2; Rec Club 1, 2; Trahlytan 2. • **FAYE DANIEL**, Jefferson, Ga. . . . Y. W. C. A. 1, Cabinet 2; Home Economics Club 1, 2; Rec Club 1, 2; Camera Club 1; Mercurian 2. • **MILTON DANIEL**, Morrow, Ga. . . . B Company.

**LEE DAVIDSON**, West Point, Ga. . . . Y. M. C. A. 1, 2; Debate Club 1; Treasurer Officers' Club 2; Dean's List 1, 2, 3; Captain S-2, Battalion Staff. • **BOB JENNINGS DAVIS**, Fernandina, Fla. . . . Y. M. C. A. 1, Cabinet 2; Rex 1, 2; Rifle Team 1, 2; President Officers' Club 2; Dean's List 2, 3; Lieutenant Colonel, Battalion Staff. • **ELIZABETH DENARD**, Gainesville, Ga. . . . Y. W. C. A. 1, 2; Home Economics Club 2; Rec Club 1, 2; Mercurian 2. • **MARIE DERRY**, Macon, Ga. . . . Y. W. C. A. 1, Cabinet 2; Women's Glee Club 1, 2; Rec Club 1.

First row, left to right: Collins, P., Conner, Corry. . . . Second row: Crowley, Cumbaa, Cuthbertson. . . . Third row: Daniel, F., Daniel, M., Davidson. . . . Fourth row: Davis, Denard, Derry.





**ARTHUR DIGBY, JR.**, Griffin, Ga. . . . Y. M. C. A. 2; Rex 1; Sergeants' Club 2; Sergeant, A Company. • **EMORY DILLASHAW**, Cochran, Ga. . . . Y. M. C. A. 1, 2; "D" Club 1, Secretary 2; Rex 1, Treasurer 2; Varsity Basketball 1, 2; Officers' Club 2; First Lieutenant, A Company. • **HOWELL DINGLER**, Griffin, Ga. . . . Y. M. C. A. 2; Sergeants' Club 2; Dean's List 3; Sergeant, Band. • **GEORGE LENTON DRAKE**, Tifton, Ga. . . . Y. M. C. A. 2; B Company. • **THOMAS EAST**, LaGrange, Ga. . . . Y. M. C. A. 1, 2; Rex 1, 2; A Company. • **GEORGE ELLIOTT**, Gainesville, Ga. . . . Y. M. C. A. 2; Sergeant, A Company.

**EDWIN HOLT ETHERIDGE**, Carl, Ga. . . . Y. M. C. A. 1, 2; Science Club 2; Camera Club 1; Sergeants' Club 2; Sergeant, B Company. • **SARA FELLOWS**, Stevenson, Ala. . . . Y. W. C. A. 1, 2; Rec Club 1, 2; Mercurian 2. • **NANNIE LOU FITTS**, Dahlonega, Ga. . . . Women's Glee Club 2; Dramatic Club 2; Phi Omicron 2; Dean's List 3. • **GEORGE FORBES**, Macon, Ga. . . . Y. M. C. A. 1, 2; Officers' Club 2; Second Lieutenant, C Company. • **WALLACE FORSYTH**, Cairo, Ga. . . . Y. M. C. A. 1; Sigma Theta 1; C Company. • **THOMAS FORT, JR.**, Lumpkin, Ga. . . . Y. M. C. A. 2; D Company.

First row, left to right: Digby, Dillashaw. . . .  
 Second row: Dingler, Drake. . . . Third row:  
 East, Elliott. . . . Fourth row: Etheridge, Fel-  
 lows. . . . Fifth row: Fitts, Forbes. . . . Sixth  
 row: Forsyth, Fort.



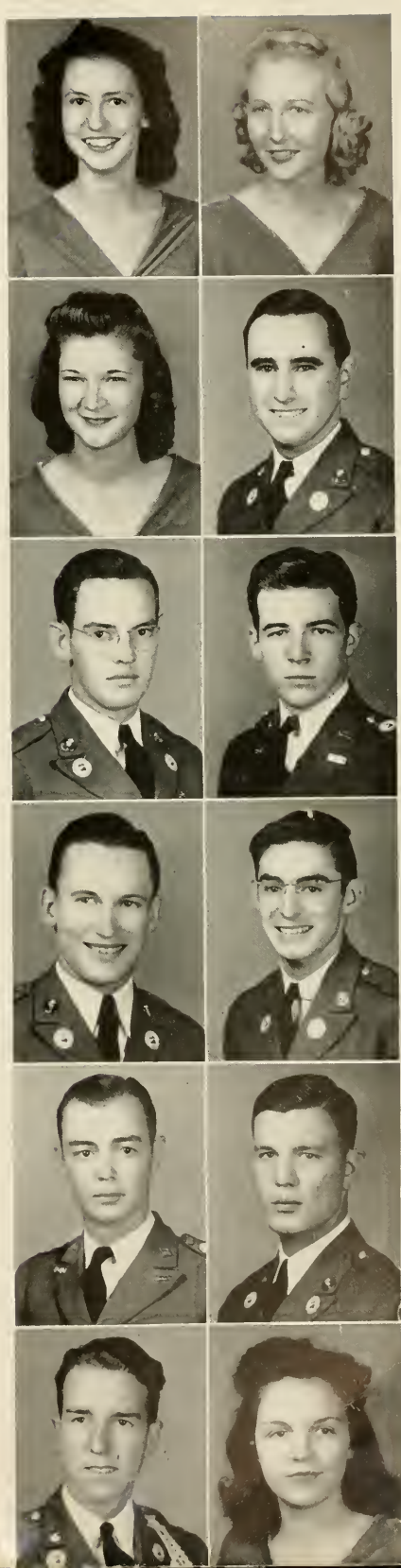




First row, left to right: Freeman, French. . .  
 Second row: Fuller, Gainey. . . Third row:  
 Gheesling, Gleaton. . . Fourth row: God-  
 frey, Grace. . . Fifth row: Green, Grenga.  
 . . . Sixth row: Griffin, L. H., Griffin, L.

**MARGARET VIRGINIA FREEMAN**, LaGrange, Ga. . . Y. W. C. A. 1, 2; Debate Club 1, 2; Women's Glee Club 1, 2; Dramatic Club 1, 2; BUGLER Staff 1, 2; Rec Club 1, 2; Trahlytan 2. • **MILDRED FRENCH**, Rossville, Ga. . . Rec Club 1, 2; Phi Omicron 2. • **LILLIAN FULLER**, Calhoun, Ga. . . Y. W. C. A. 1, President 2; BUGLER Staff 2; CYCLOPS Staff 2; Rec Club 1, 2; Girls' Athletic Council, Basketball Manager 2; Mercurian 2; Varsity Basketball 1; Dean's List 1, 2, 3. • **RAY GAINEY**, Boston, Ga. . . Sergeants' Club 2; Sergeant, D Company. • **FRANK GHEESLING**, Atlanta, Ga. . . Y. M. C. A. 1, 2; BUGLER Staff 1, 2; C Company. • **STEVE GLEATON**, Decatur, Ga. . . Y. M. C. A. 2; Science Club 2; Officers Club 2; Second Lieutenant, D Company. • **H. C. GODFREY**, Gainesville, Ga. . . Rex 1; Sergeants' Club 2; Sergeant, C Company.

**BENJAMIN HILL GRACE**, Albany, Ga. . . Debate Club 1; Dramatic Club 1, 2; BUGLER Staff 2; CYCLOPS Staff 2; Rex 1; Vice-President Freshman Class; Science Club 2; C Company. • **GEORGE GREEN**, Cordele, Ga. . . Officers' Club 2; Second Lieutenant, B Company. • **JAMES GRENGA**, Newnan, Ga. . . Y. M. C. A. 1, 2; Rex 1; A Company. • **HARRY GRIFFIN**, Atapulgus, Ga. . . Band. • **LUCILLE GRIFFIN**, Sylacauga, Ala. . . Y. W. C. A. 1, 2; Rec Club 1, 2; Girls' Athletic Council 1, 2; Varsity Basketball 1; Mercurian 2.

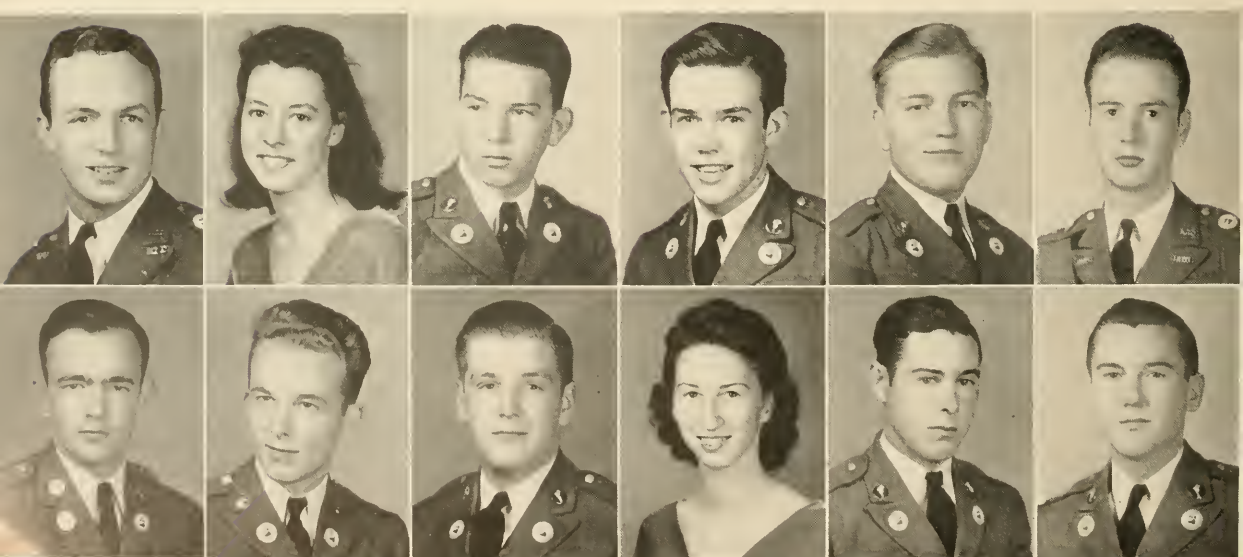




**BENJAMIN WALTER GRIMES**, Gainesville, Ga. . . . Y. M. C. A. 1, 2; "D" Club 2; Rex 1, 2; Boys' Athletic Council 2; Secretary Sophomore Class; Boxing Champion 1; Officers' Club 2; Second Lieutenant, D Company. • **GERTRUDE HAMPTON**, Dahlonega, Ga. . . . Y. W. C. A. Cabinet 1, 2; CYCLOPS Staff, 2; Rec Club 2; Girls' Athletic Council 2; Captain Phi Omicron 2; Dean's List 1, 2, 3. • **JOHN HARRIS**, Millen, Ga. . . . Y. M. C. A. 1, 2; Dramatic Club 2; CYCLOPS Staff 2; Sergeant's Club 2; Sergeant, C Company. • **DAN VERNON HAYES**, College Park, Ga. . . . Y. M. C. A. 2; Science Club 2; Boxing Champion 1; D Company. • **CARL JAMES HEATH**, Hinesville, Ga. . . . Y. M. C. A. 1, 2; BUGLER Staff 1, 2; Sigma Theta 1; D Company. • **FRANK HENDERSON**, Griffin, Ga. . . . Y. M. C. A. 1, 2; Rex 1; Officers' Club 2; Dean's List 1, 2, 3; Second Lieutenant, A Company.

**CLYDE JEROME HICKS**, Conyers, Ga. . . . Y. M. C. A. 1, 2; CYCLOPS Staff 2; Sigma Theta 1, 2; Cheerleader 2; Sergeants' Club 2; Sergeant, C Company. • **JOHN HILL**, Marietta, Ga. . . . Y. M. C. A. 1; D Company.

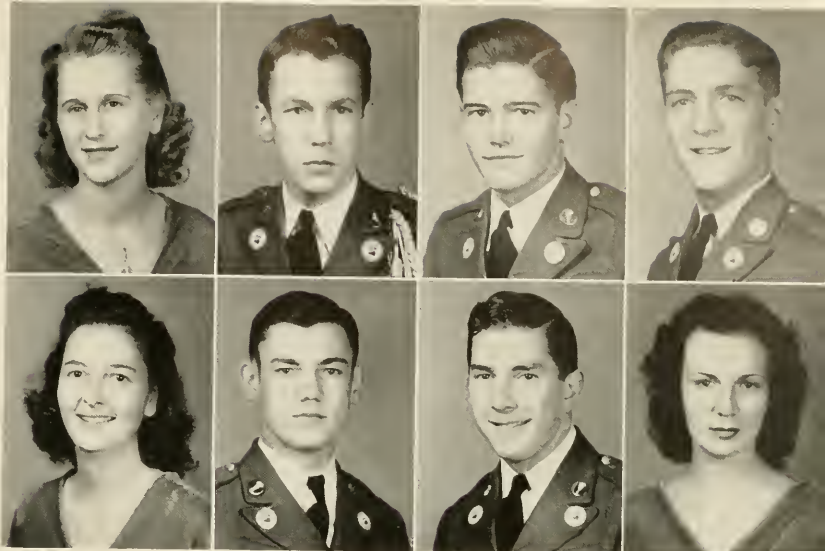
**JAMES PERSONS HOGG**, Hanes City, Fla. . . . Y. M. C. A. 1; CYCLOPS Staff 2; BUGLER Staff 2; Sergeants' Club 2; Sergeant, C Company. • **MARIE LOUISE HOLBROOK**, Cumming, Ga. . . . Rec Club 1, 2; Phi Omicron 2. • **GARNER HOOPER**, Blairsville, Ga. . . . Y. M. C. A. 1, 2; "D" Club 2; Science Club 1; Cross Country Winner 1; Officers' Club 2; Second Lieutenant, B Company. • **ELDRED HUDSON**, Eatonton, Ga. . . . Sergeants Club 2; Sergeant, D Company.



First row, left to right: Grimes, Hampton, Harris, Hayes, Heath, Henderson. . . . Second row: Hicks, Hill, Hogg, Holbrook, Hooper, Hudson.

# SOPHOMORES

## 1942

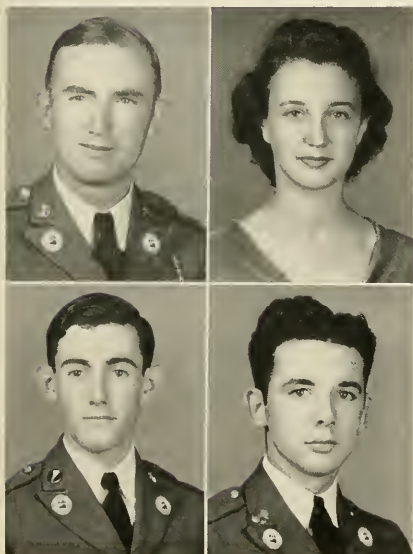


First row, left to right: Hughes, Irwin, Ivey, L., Ivie, V. . . . Second row: Jarrard, C., Jarrard, J., Johnson, Jolley.

dent 2; BUGLER Staff 2; CYCLOPS Staff 2; "D" Club 1, 2; Sigma Theta 1, 2; Pan-Hellenic Council 2; Tennis Team 1, 2; Rifle Team 1, 2; Sergeants' Club 2; Sergeant D Company.

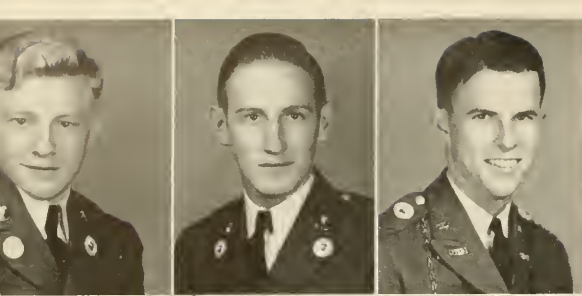
**SUE HUGHES**, Oakwood, Ga. . . . Y. W. C. A. 1, 2; Home Economics Club 1; Rec Club 1, 2; Trahlytan 2; Varsity Basketball 1. • **JOHN RICHARD IRWIN**, Albany, Ga. . . . Y. M. C. A. 1, 2; BUGLER Staff 2; CYCLOPS Staff 2; Rex 1, Secretary 2; Science Club 1, President 2; Vice-President Sophomore Class; President Sergeants' Club 2; Drum Major, Band; Dean's List 1, 2; Technical Sergeant, Band. • **LEE IVEY**, Warwick, Ga. . . . Y. M. C. A. 1, 2; Sergeant, A Company. • **VIRGIL IVIE**, Alto, Ga. . . . Y. M. C. A. 2; Rex 1, 2; A Company.

**CAROLINE JARRARD**, Chicopee, Ga. . . . Y. W. C. A. 1, 2; Rec Club 1, 2; Girls' Athletic Council 2; Captain Hippoletans 2. • **JAMES CLAYTON JARRARD**, Waycross, Ga. . . . Y. M. C. A. 1, 2; Science Club 1, 2; Sergeants Club 2; Sergeant, C Company. • **GEORGE JOHNSON**, Ashburn, Ga. . . . D Company. • **MAYS JOLLEY**, Atlanta, Ga. . . . Y. W. C. A. 1, 2; Dramatic Club 2; Home Economics Club 1; Mercurian 2; Rec Club 1, 2.

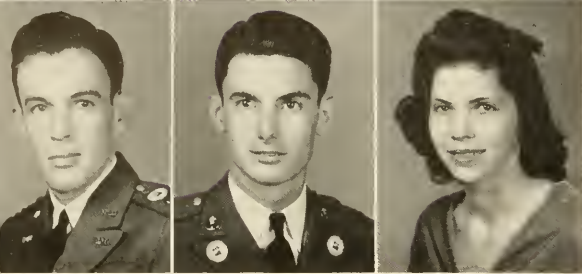


First row, left to right: Jones, J., Jones, L.  
Second row: Jones, M. A., Jones, R. M.

**JAMES JONES**, Gainesville, Ga. . . . Y. M. C. A. 1, 2; Vice-President Sergeants' Club 2; First Sergeant, B Company. • **LLENELL JONES**, Dahlonega, Ga. . . . Y. W. C. A. Cabinet 1, 2; Dramatic Club 2; Home Economics Club 1, President 2; Rec Club 1, 2; Girls' Athletic Council 2; Trahlytan 2. • **MARION JONES**, Griffin, Ga. . . . Y. M. C. A. 1, Cabinet 2, Debate Club 2; BUGLER Staff 1, 2; Rex 1, 2; Associate Editor, CYCLOPS 2; Camera Club 1; Sergeants' Club 2; Sergeant, C Company. • **RALPH MILTON JONES**, Griffin, Ga. . . . Y. M. C. A. 1; Vice-Presi-



**ROY ELTON JOYNER**, College Park, Ga. . . . Y. M. C. A. Cabinet 2; Men's Glee Club 1, 2; BUGLER Staff 1, 2; Secretary Science Club 2; Sergeants' Club 2; Dean's List 1, 2, 3; Color Guard, Staff Sergeant. • **ERNEST KELLAR**, Whitestone, Ga. . . . Y. M. C. A. 2; Dramatic Club 1, 2; CYCLOPS Staff 2; Rex 1, 2; Sergeants' Club 2; Sergeant, A Company.

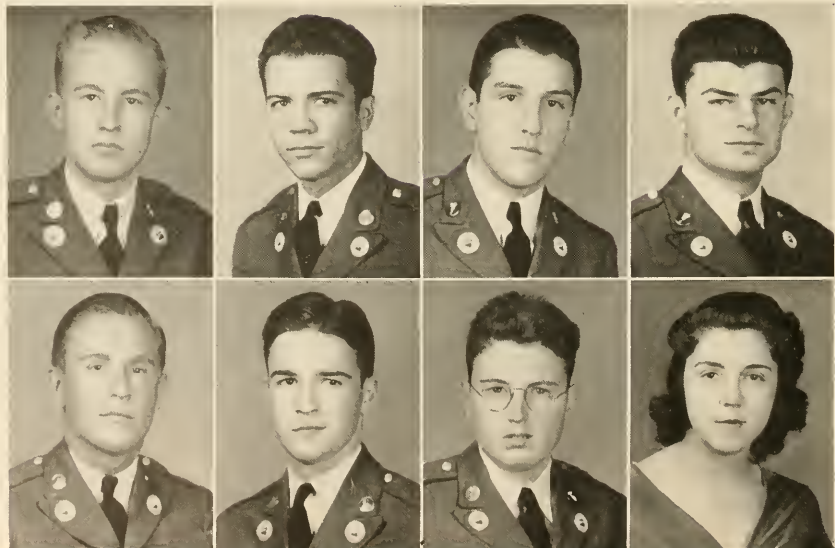


First row, left to right: Joyner, Kellar, Kennemur. . . . Second row: Key, Kight, Kilgore.

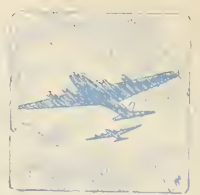
**JACK KENNEMUR**, Whigham, Ga. . . . Y. M. C. A. 1, 2; BUGLER Staff 2; "D" Club 2; Boys' Athletic Council 2; Officers' Club 2; Second Lieutenant, B Company. • **HOMER ANDERSON KEY**, Macon, Ga. . . . Officers' Club 2; Captain S-1, Battalion Staff. • **THOMAS KIGHT**, Lovett, Ga. . . . B Company. • **KARLINE KILGORE**, Duluth, Ga. . . . Dramatic Club 2; Home Economics Club 2; Rec Club 1, 2; Phi Omicron 2.

**ALLEN SUMNER KING**, White Plains, Ga. . . . Y. M. C. A. 1, 2; Debate Club 2; Dramatic Club 2; Sergeants' Club 2; Dean's List 1, 2; Color Guard, Staff Sergeant. • **CHARLES BALDWIN KING**, Albany, Ga. . . . Y. M. C. A. 1, 2; Rex 1, 2; Science Club 1, 2; Debate Club 2; Sergeants' Club 2; Sergeant, C Company. • **JOHN MONROE KING**, Atlanta, Ga. . . . Y. M. C. A. 2; CYCLOPS Staff 2; Sigma Theta 1, 2; Science Club 2; Sergeants' Club 2; Sergeant, C Company. • **JIM KINKEAD**, Griffin, Ga. . . . Y. M. C. A. 1, 2; Sergeants' Club 2; Sergeant, C Company.

**GENE LATHEM**, Canton, Ga. . . . Y. M. C. A. 2; B Company. • **CHARLES LYLE**, Griffin, Ga. . . . Rex 1, 2; President Pan-Hellenic Council 2; Treasurer of Sophomore Class; Officers' Club 2; Second Lieutenant, A Company. • **JOHN OWEN McCOY**, Homer, Ga. . . . Y. M. C. A. 1, 2; Debate Club 2; Camera Club 2; Sergeants' Club 2; Sergeant, D Company. • **KATHLEEN McGILL**, Lincolnton, Ga. . . . Y. W. C. A. 1, 2; Home Economics Club 2; Rec Club 1, 2; Hippolytan 2.



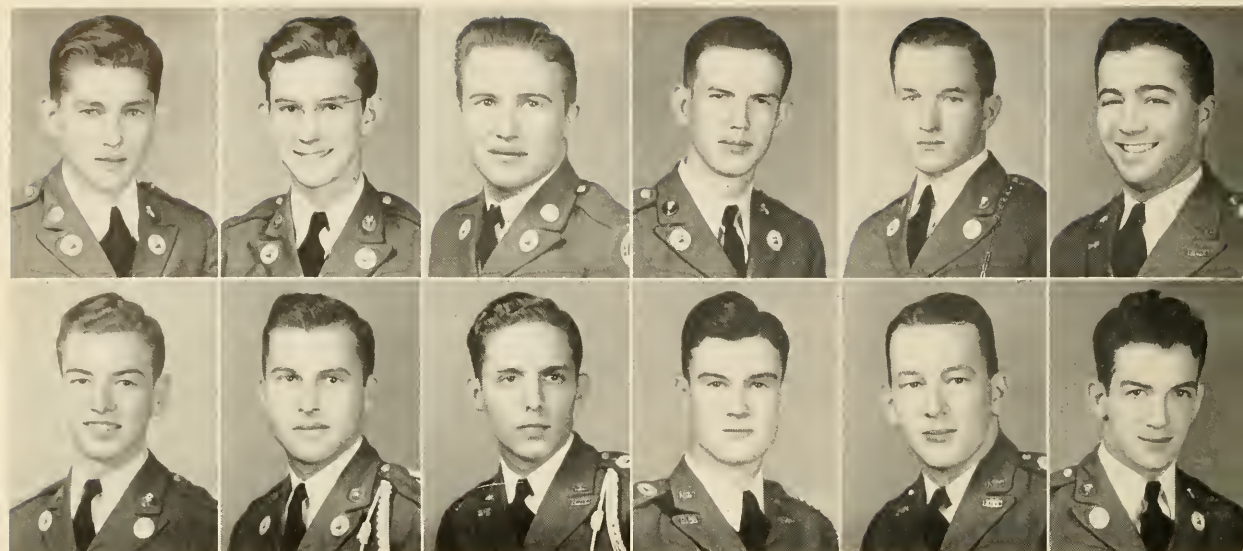
First row, left to right: King, A., King, C. B., King, J. M., Kinkead. . . . Second row: Lathem, Lyle, McCoy, McGill.



First row, left to right: McKay, McWhorter, Magargee, Maley. . . . Second row: Mandeville, Mathis, Mauthe, May. . . . Third row: Mayo, Mercer, Miller, H. C., Miller, J. E.

**JACK COLLINS MCKAY**, Macon, Ga. . . . Y. M. C. A. 2; Reporter Science Club 2; Officers' Club 2; Captain, B Company. • **BOYD McWHORTER**, Cochran, Ga. . . . Y. M. C. A. 1, Cabinet 2; "D" Club 1, President 2; Rex 1, Vice-President 2; Pan-Hellenic Council 2; Varsity Basketball 1, 2; Vice-President Officers' Club 2; Captain, A Company. • **STEVE MAGARGEE**, Decatur, Ga. . . . Y. M. C. A. 2; CYCLOPS Staff 2; Treasurer Sigma Theta Pledges 1, Member 2; Treasurer of Freshman Class; C Company. • **JOHN MALEY**, Gabbettville, Ga. . . . Y. M. C. A. 1, 2; Sergeants' Club 2; Sergeant, D Company. • **JAMES BENJAMIN MANDEVILLE**, Tennille, Ga. . . . Y. M. C. A. 1, 2; BUGLER Staff 2; Associate Business Manager CYCLOPS Staff 1, Business Manager 2; Sigma Theta 1, 2; Vice-President Pan-Hellenic Council 2; Officers' Club 2; Dean's List 2; First Lieutenant, C Company. • **RICHARD NEWTON MATHIS**, Fitzgerald, Ga. . . . Y. M. C. A. 1, 2; Debate Club 1, President 2; CYCLOPS Staff 2; Sergeants' Club 2; Dean's List 1, 2, 3; Sergeant, C Company.

**JOHN MARTIN MAUTHE**, Marietta, Ga. . . . Y. M. C. A. 1, 2; Rex 1, 2; Sergeant's Club 2; Sergeant, A Company. • **ROSE MAY**, Sandersville, Ga. . . . Y. W. C. A. 1, 2; Dramatic Club 2; CYCLOPS Staff 2; Rec Club 1, 2; Treasurer Girls' Athletic Council 2; Mercurian 2; Dean's List 1, 2, 3. • **SAMUEL ECHOLS MAYO**, Richland, Ga. . . . Y. M. C. A. 1, 2; Men's Glee Club 1, 2; Sigma Theta 1; Science Club 2; Camera Club 2; D Company. • **DURWARD BELMONT MERCER**, Macon, Ga. . . . Y. M. C. A. Cabinet 1, Vice-President 2; Officer's Club 2; First Lieutenant, Battalion Staff. • **HOWARD MILLER, JR.**, Avondale Estates, Ga. . . . Y. M. C. A. 1, 2; Dramatic Club 1; Sigma Theta President Pledges 1, President members 2; Officer's Club 2; Second Lieutenant, C Company. • **JOHN MILLER**, Calhoun, Ga. . . . Y. M. C. A. 2; Rex 1, 2; Officer's Club 2; First Lieutenant, A Company.

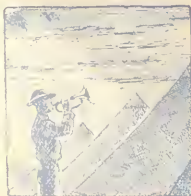


First row, left to right: Misenheimer, Mitchell, Morris, Mull, Murrach, Myron. . . . Second row: Neely, Odum, Oesterreicher, Ouzts, Owens, Parks.

# SOPHOMORES 1942

**REID MISENHEIMER**, Gainesville, Ga. . . . Sergeants' Club 2; Master Sergeant, Battalion Staff. • **TOM KINARD MITCHELL**, Griffin, Ga. . . . Y. M. C. A. 1, 2; Sergeants' Club 2; First Sergeant, D Company. • **CHARLES MORRISS**, Norcross, Ga. . . . A Company. • **CHARLES HAMILTON MULL**, Morganton, Ga. . . . Sergeants' Club 2; Sergeant, B Company. • **WILLIAM MADISON MURRAH**, Richland, Ga. . . . Y. M. C. A. 1, 2; Rex 1; Sergeants' Club 2; First Sergeant, A Company. • **HAROLD LEMAR MYRON**, Atlanta, Ga. . . . Y. M. C. A. 1, 2; "D" Club 2; Boxing Champion 1; Officers' Club 2; Second Lieutenant, C Company.

**ROBERT ROY NEELY**, LaFayette, Ga. . . . Y. M. C. A. 1, 2; Camera Club 1; Sergeants' Club 2; Sergeant, B Company. • **PHILLIP ODUM, JR.**, Moultrie, Ga. . . . Y. M. C. A. 2; Sergeants' Club 2; Sergeant, Band. • **DONALD LAWSON OESTERREICHER**, Quitman, Ga. . . . Y. M. C. A. Cabinet 2; Debate Club 1; Rex 1; Officers' Club 2; First Lieutenant, Band. • **CHARLIE VESTUS OUZTS**, Tennille, Ga. . . . Y. M. C. A. 1, Cabinet 2; BUGLER Staff 1, 2; CYCLOPS Staff, Associate Editor 1; Editor-in-Chief 2; President Sigma Theta Pledges 1; Vice-President Members 2; Vice-President Science Club 2; Officers' Club 2; Dean's List 1, 2, 3; Captain S-3; Battalion Staff. • **JOHN OWENS**, Hahira, Ga. . . . Science Club 1, 2; Officers' Club 2; Captain S-4, Battalion Staff. • **ROSCOE PARKS**, Winder, Ga. . . . Y. M. C. A. 1, 2; Rex 1; D Company.





Reading down: Parrott, Partridge, Patterson, G., Patterson, W.

**BLAKELY PARROTT**, Dublin, Ga. . . . Y. M. C. A. 2; Rex 1; Sergeants' Club 2; Sergeant, Band. • **AUDREY PART- RIDGE**, Lincolnton, Ga. . . . Y. W. C. A. 1, 2; Home Eco- nomics Club 1, 2; Rec Club 1, 2; Hippolytan 2. • **GENE PATTERSON**, Adel, Ga. . . . Y. M. C. A. 1, Cabinet 2; Debate Club 1; Men's Glee Club 1, 2; BUGLER Staff 1, Editor-in-Chief 2; CYCLOPS Staff 2; Rex 1; N. G. C. Orchestra 1, 2; Officers' Club 2; Dean's List 3; Second Lieutenant, Band. • **WILLIAM PATTERSON**, Adel, Ga. . . . N. G. C. Orchestra 1, 2; Officers' Club 2; Rifle Team 1, Captain 2; Dean's List 2, 3; Captain, Band. • **SARA FRANCES PEACOCK**, Adel, Ga. . . . Y. W. C. A. 1; Vice- President 2; Debate Club 1; Secretary-Treasurer 2; Rec Club 1, 2; Girls' Athletic Council; Captain Mercurians 2.

**JAMES ROY PIRKLE**, Decatur, Ga. . . . Y. M. C. A. 1, 2; Rex 1; Camera Club 1; Sergeants' Club 2; Sergeant, Band • **JOHN LEWIS PLEDGER**, Cedartown, Ga. . . . Y. M. C. A. 2; C Company. • **ROBERT MILLER PORTER**, Sav- annah, Ga. . . . Rex 2; C Company. • **NIMROD PRES- TON**, Monroe, Ga. . . . Y. M. C. A. 2; Sigma Theta 1; Vice-President 2; Sergeants' Club 2; First Sergeant, C Company. • **JOHN PRUETT**, Thomaston, Ga. . . . Y. M. C. A. 1, 2; Rex 1, 2; Sergeants' Club 2; Sergeant, A Com- pany. • **BILLY PURDY**, Valdosta, Ga. . . . Y. M. C. A. 1, 2; C Company. • **EARL RAY**, Clarksville, Ga. . . . Y. M. C. A. 1, 2; Sergeants' Club 2; Sergeant, B Company.



First row, left to right: Peacock, Pirkle, Pledger, Porter. . . . Second row, Preston, Pruett, Purdy, Ray.



First row, left to right: Rechsteiner, H., Rechsteiner, R., Redd, Roberts. . . . Second row: Robinson, Roquemore, Rudasill, Russell. . . . Third row: Sanders, H., Sanders, T., Scott, J. P., Scott, J.

**HARRY RECHSTEINER**, Dahlonge, Ga. . . . Y. M. C. A. 1, 2; Rex 1; Sergeants' Club 2; Deans' List 3; Sergeant, Band. • **ROY RECHSTEINER**, Dahlonge, Ga. . . . Y. M. C. A. 1, 2; Men's Glee Club 1, 2; Rex 1, 2; Officers' Club 2; Dean's List 3; Second Lieutenant, Band. • **MAHALA REDD**, Cumming, Ga. . . . Y. W. C. A. 1, 2; Home Economics Club 1, 2; Rec Club 1, 2; Phi Omicron 2. • **EDWIN ROBERTS**, Decatur, Ga. . . . Y. M. C. A. 1, 2; Science Club 2; D Company.

**CLAUD EDGAR ROBINSON**, Greensboro, Ga. . . . Y. M. C. A. 1, 2; Sergeants' Club 2; Sergeant, C Company. • **BILL ROQUEMORE**, Nashville, Ga. . . . Y. M. C. A. 1, 2; BUGLER Staff 1, Associate Editor 2; CYCLOPS Staff 2; Officers' Club 2; Dean's List 1, 2; First Lieutenant, D Company.

**VALERIA RUDASILL**, Canton, Ga. . . . Y. W. C. A. 1, 2; Women's Glee Club 1, 2; Dramatic Club 1, 2; Home Economics Club 1, Rec Club 1, 2; Girls' Athletic Council 2; Mercurian 2. • **JAMES RUSSELL**, Waverly, Ga. . . . Y. M. C. A. 2; D Company. • **HERBERT SANDERS**, Edison, Ga. . . . D Company.

**THURMAN SANDERS**, Dahlonge, Ga. . . . Sergeants' Club 2; Sergeant, B Company. • **JOSEPH SCOTT**, Macon, Ga. . . . Y. M. C. A. 2; Sergeants' Club 2; Sergeant, C Company. • **JOSEPHINE SCOTT**, LaGrange, Ga. . . . Y. W. C. A. 1, 2; BUGLER Staff 2; Rec Club 1, 2; Girls' Athletic Council, Tennis Manager 2; Trahlytan 2.







**ELIZABETH SHANAHAN**, Dahlonega, Ga. . . . Y. W. C. A. Cabinet 1, 2; Women's Glee Club 1, 2; Home Economics Club 1, 2; Rec Club 1, 2; Girls' Athletic Council 1; Phi Omicron 2. • **JAMES SHERRER**, Carlton, Ga. . . . A Company. • **BRUCE SMITH**, Fort Payne, Ala. . . . Y. M. C. A. 1, 2; CYCLOPS Staff 2; C Company. • **JAMES SMITH**, New Holland, Ga. . . . Y. M. C. A. 1; Cabinet 2; Sigma Theta 1; Chaplain 2; Sergeants' Club 2; Dean's List 1, 2, 3; Sergeant, C Company.

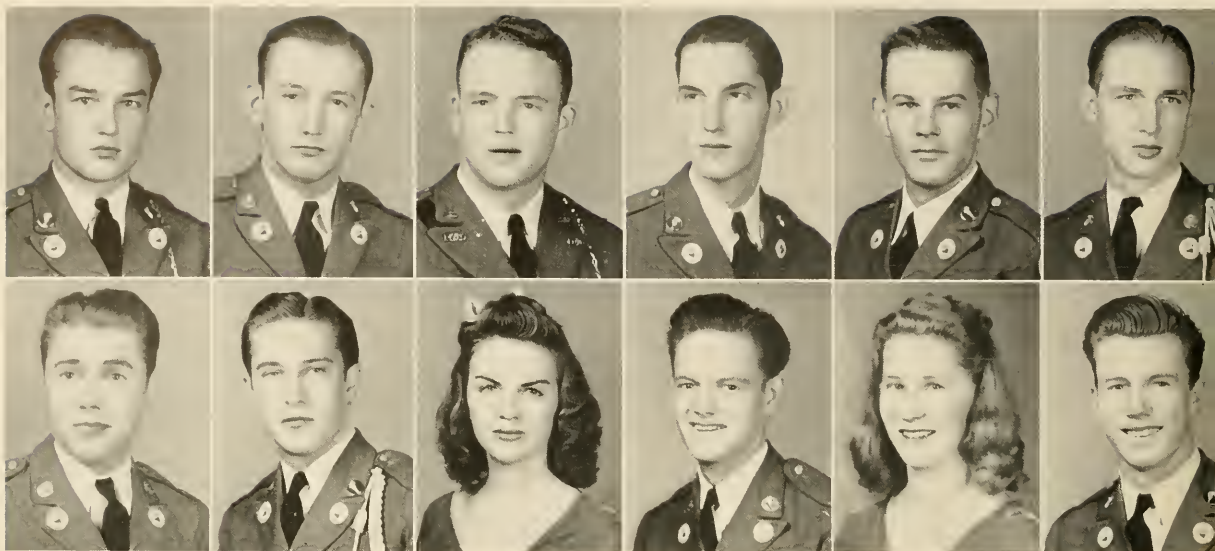
**FRED SNELL**, Snellville, Ga. . . . Y. M. C. A. 2; Sigma Theta 1; D Company. • **B. R. SPAINHOUR**, Gainesville, Ga. . . . Y. M. C. A. 1, 2; Sergeants' Club 2; Sergeant, C Company. • **JAMES STARR**, Royston, Ga. . . . Y. M. C. A. 2; Sergeants' Club 2; Dean's List 2, 3; Sergeant, D Company. • **J. W. STARR, JR.**, Albany, Ga. . . . Y. M.

C. A. 1; President 2; Debate Club 1, 2; BUGLER Staff 2; "D" Club 2; Rex 1, 2; President of Freshman Class; President Sophomore Class; Tennis Team 1; Secretary Officers' Club 2; Dean's List 2; Captain, C Company.

**ALICE MARIE STATON**, Jefferson, Ga. . . . Y. W. C. A. 1, 2; Women's Glee Club 1, 2; Home Economics Club 1, 2; Rec Club, 1, 2; Girls' Athletic Council 1, 2; Captain Trahlytans 2. • **EDWARD STONE**, Whigham, Ga. . . . Sergeants' Club 2; Sergeant, B Company. • **ANITA TANNER**, Sandersville, Ga. . . . Y. W. C. A. 1; Cabinet 2; Home Economics Club 1, 2; Rec Club 1, 2; Girls' Athletic Council 1, 2; Mercurian 2. • **SARA TAPPAN**, White Plains, Ga. . . . Debate Club 2; Dramatic Club 2; Trahlytan 2.



First row, left to right: Shanahan, Sherrer, Smith B T., Smith, J. L., Snell, Spainhour. . . . Second row: Starr, J., Starr, J. W., Staton, Stone, Tanner, Tappan.



First row, left to right: Tate, Teasley, Thomas, Thurman, Timmons, Trimble. . . . Second row: Turner, Vandiver, Vaughn, Wagnon, Warmack, Weatherly.

**JAMES OLIVER TATE**, High Shoals, Ga. . . . A Company  
 • **LUCIUS TEASLEY**, Hartwell, Ga. . . . Y. M. C. A. 1, 2; Rex 1, 2; Science Club 2; A Company. • **FRANK THOMAS**, Macon, Ga. . . . Y. M. C. A. 1; Cabinet 2; Debate Club 1, 2; Dramatic Club 1; BUGLER Staff 1; Business Manager 2; "D" Club 2; Boxing Champion 1; President Student Body 2; Rifle Team 1, 2; Officers' Club 2; Dean's List 1, 2, 3; Major, Battalion Staff.

**JOHN LEWIS THURMAN**, LaFayette, Ga. . . . Y. M. C. A. 2; Sergeants' Club 2; Sergeant, B Company. • **ROBERT TIMMONS**, West Point, Ga. . . . Y. M. C. A. 1; Men's Glee Club 1, 2; Rex 1; Sergeants' Club 2; Sergeant, A Company. • **RAMSEY TRIMBLE**, Moultrie, Ga. . . . Y. M. C. A. 2; CYCLOPS Staff 2; N. G. C. Orchestra 2; Camera Club 1, 2; BUGLER Staff 2; Battalion Bugler; Band. • **ED TURNER**, Cleveland, Ga. . . . Sergeants' Club 2; Sergeant, B Company.

**WILLIAM VANDIVER, JR.**, Jefferson, Ga. . . . Y. M. C. A. 1; Rex 1; Band. • **MIRIAM VAUGHN**, Williamson, Ga. . . . Y. W. C. A. 1, 2; Women's Glee Club 2; Science Club 2; Home Economics Club 2; Rec Club 1, 2; Hippolytan 2. • **HUGH WAGNON**, Quitman, Ga. . . . Rex 1; B Company. • **EDRESS WARMACK**, Chatsworth, Ga. . . . Y. W. C. A. 1; Cabinet 2; Rec 1, 2; Mercurian 2. • **GEORGE MALCOLM WEATHERLY**, Mountain City, Ga. . . . Y. M. C. A. 1, 2; Rex 1, 2; A Company.

# SOPHOMORES

## 1942



**MARGARET WEEMS**, Clarkston, Ga. . . . Y. W. C. A. 1, Cabinet 2; Debate Club 1, 2; Women's Glee Club 1, 2; Dramatic Club 1, 2; BUGLER Staff 1, 2; CYCLOPS Staff 2; Vice-President Rec Club 1, President 2; Dean's List 3. • **ANDREW WHALEN**, Griffin, Ga. . . . Y. M. C. A. 2; Sergeants' Club 2;

Sergeant, B Company. • **VERA WHEELER**, Ball Ground, Ga. . . . Y. W. C. A. 1, 2; Dramatic Club 1, 2; CYCLOPS Staff 2; BUGLER Staff 2; Rec Club 1, 2; Dean's List 2; Hippolytan 2.

**GEORGE OLIVER WHITAKER**, Valdosta, Ga. . . . Y. M. C. A. 1, 2; Science Club 1, 2; Sergeants' Club 2; Sergeant, C Company. • **JACK WALTER WHITE**, Box Springs, Ga. . . . Y. M. C. A. 2; Sergeants' Club 2; Sergeant, A Company. • **JAMES WHITFIELD**, Blue Ridge, Ga. . . . Y. M. C. A. 1, 2; CYCLOPS Staff 2; Sergeants' Club 2; Sigma Theta 1; Treasurer 2; Sergeant, C Company. • **CLAUDE WILLIAMS**, Gainesville, Ga. . . . Y. M. C. A. 1, 2; Debate Club 1; "D" Club 2; Sigma Theta 1, 2; Science Club 1; Tennis Team 1, 2; Officers' Club 2; Second Lieutenant, B Company.

**JAMES MARION WILLIAMS**, Monroe, Ga. . . . Y. M. C. A. 2; Men's Glee Club 1, 2; Rex 1, 2; C Company. • **DORIS WOFFORD**, Cornelia, Ga. . . . Y. W. C. A. 1, 2; Parliamentarian Science Club 2; Rec Club 1, 2; Trahlytan 2; • **FRED WOODWARD**, Cedartown, Ga. . . . Y. M. C. A. 2; B Company. • **TOM WORSHAM**, Jeffersonville, Ga. . . . Y. M. C. A. 2; Officers' Club 2; Dean's List 3; Captain, D Company. • **ROBERT WYNNE**, Macon, Ga. . . . B Company.



First row, left to right: Weems, Whalen, Wheeler. . . . Second row: Whitaker, White, Whitfield. . . . Third row: Williams, C., Williams, J., Wofford. . . . Fourth row: Woodward, Worsham, Wynne.

# THE FRESHMEN



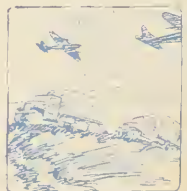
First row, left to right: Johns, Mingledorff.  
 . . . Second row: McConnell, Mangum.

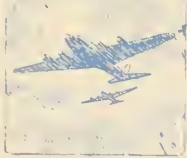
## FRESHMAN CLASS OFFICERS

EUGENE JOHNS . . . . .	President
FRED MINGLEDORFF . . . . .	Vice-President
JEFF McCONNELL . . . . .	Secretary
HOLLAND MANGUM . . . . .	Treasurer

FRESHMEN

LAWRENCE ACCORDINI . . . . .	Elberton, Ga.	P. C. ANDREWS . . . . .	Thomasville, Ga.
AARON ADKINS . . . . .	Thomson, Ga.	REID ANDREWS . . . . .	Carnegie, Ga.
JACK ADKINS . . . . .	Keyville, Ga.	MADelyn ANTHONY . . . . .	Dahlonga, Ga.
SAM ALBEA . . . . .	Rome, Ga.	CARROLL ARMSTRONG . . . . .	Macon, Ga.
GRADY ALDAY . . . . .	Thomasville, Ga.	JOHN ARMSTRONG . . . . .	Albany, Ga.
W. D. ALEXANDER . . . . .	Nashville, Ga.	VIRGINIA ASH . . . . .	Dahlonega, Ga.
VERNON ALFORD . . . . .	Silver Creek, Ga.	FLORA ATKINS . . . . .	Hemp, Ga.
MIRIAM ALLEN . . . . .	Milner, Ga.	MARION AULTMAN . . . . .	Tifton, Ga.
MILDRED AMOS . . . . .	Calhoun, Ga.	ED BALDWIN . . . . .	Decatur, Ga.
FRANK ANDREWS . . . . .	Thomaston, Ga.	ROBERT BALLARD . . . . .	Winder, Ga.





FRESHMEN

WALTER BANKS . . . . . Thomaston, Ga.  
 ARTHUR BARRON . . . . . Clayton, Ga.  
 D. A. BARTON . . . . . Rossville, Ga.  
 HOMER BARTON . . . . . Rydal, Ga.  
 RITA BARTON . . . . . Atlanta, Ga.  
 MEVIL BEARD . . . . . Buford, Ga.  
 BOB BENNETT . . . . . Decatur, Ga.  
 NORMAN BEVERLY . . . . . Quitman, Ga.  
 JAMES BLACKMON . . . . . Washington, Ga.  
 BOBBY BLACKWELL . . . . . Homer, Ga.

HENRY BLACKWELL . . . . . Sparta, Ga.  
 LINDSEY BODE . . . . . Atlanta, Ga.  
 JOHN BOGLE . . . . . McRae, Ga.  
 HURST BOWERS . . . . . Canon, Ga.  
 ROSE BRADLEY . . . . . Winterville, Ga.  
 DAVID BRANAN . . . . . Lexington, Ga.  
 BETTY JEAN BROWN . . . . . Warrenton, Ga.  
 DOUGLAS BUCKALEW . . . . . Jonesboro, Ga.  
 WILL BURCH . . . . . Eastpoint, Ga.  
 ALICE BUSH . . . . . Lexington, Ga.

## FRESHMEN

ROBERT BUSH . . . . . Camilla, Ga.  
 BEN CAIN . . . . . Hampton, Ga.  
 HARRY CAMP . . . . . Augusta, Ga.  
 CAROLINE CAREY . . . . . Bogart, Ga.  
 JACK CARNEY . . . . . Tate, Ga.  
 TROY CARROLL . . . . . Alpharetta, Ga.  
 JAMES CARTER . . . . . Sanford, Fla.  
 RICHARD CARTER . . . . . Columbus, Ga.  
 CAREY CASH . . . . . Hoschton, Ga.  
 MARY CASON . . . . . Toombsboro, Ga.

KENNETH CHAMBERS . . . . . Homer, Ga.  
 JAMES CHAPMAN . . . . . Macon, Ga.  
 MARTHA CHAPMAN . . . . . Crawfordville, Ga.  
 TAYLOR CHASTAIN . . . . . Athens, Ga.  
 HOYT CHICK . . . . . Athens, Ga.  
 GRADUS CHRISTAIN . . . . . Elberton, Ga.  
 BETTY COGBURN . . . . . Jasper, Ga.  
 GERALD COOK . . . . . Cleveland, Ga.  
 J. W. COOK . . . . . Keysville, Ga.  
 MACK CRAIG . . . . . Atlanta, Ga.





FRESHMEN

- |                           |                    |                           |                  |
|---------------------------|--------------------|---------------------------|------------------|
| HENRY CREEL . . . . .     | Fairburn, Ga.      | CLAUDE DUNCAN . . . . .   | Fairburn, Ga.    |
| HORACE CRONIC . . . . .   | Commerce, Ga.      | RAY DUNAHOO . . . . .     | Shannon, Ga.     |
| RUNDELL CURTIS . . . . .  | Jacksonville, Fla. | FAUST DURDEN . . . . .    | Monroe, Ga.      |
| SUE CUTTS . . . . .       | Calhoun, Ga.       | J. A. DYER . . . . .      | Dahlonega, Ga.   |
| ALEX DALEY . . . . .      | Wrightsville, Ga.  | BETTY EDMONSON . . . . .  | Gainesville, Ga. |
| POPE DAVIS . . . . .      | ChIPLEY, Ga.       | TOMMY EDWARDS . . . . .   | Dearing, Ga.     |
| JAMES DEADWYLER . . . . . | Elberton, Ga.      | BOB ELLIOTT . . . . .     | Conyers, Ga.     |
| REUBEN DENNARD . . . . .  | Atlanta, Ga.       | FRANCES ELLIOTT . . . . . | Dahlonega, Ga.   |
| WILBUR DIXON . . . . .    | Jonesboro, Ga.     | ROBERT ELLIOTT . . . . .  | Moultrie, Ga.    |
| WILLIAM DOBBS . . . . .   | Camilla, Ga.       | JOEL ELROD . . . . .      | Griffin, Ga.     |

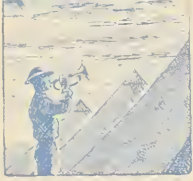


FRESHMEN

JOE ESTES . . . . . Winder, Ga.  
 GEORGE ETHERIDGE . . . . . Richland, Ga.  
 ROBERT EVANS . . . . . Bartow, Ga.  
 PHILLIP FARKAS . . . . . Albany, Ga.  
 GUY FITTS . . . . . Dahlonega, Ga.  
 EVELYN FLEMING . . . . . Gainesville, Ga.  
 JOHN FITZPATRICK . . . . . Savannah, Ga.  
 DAGMA FLOYD . . . . . Athens, Ga.  
 RALPH GAINES . . . . . Elberton, Ga.  
 CHARLES GARRET . . . . . Summerville, Ga.

GENELLE GAZAWAY . . . . . Calhoun, Ga.  
 W. M. GEORGE . . . . . Midville, Ga.  
 WILLIAM GILBERT . . . . . Tennille, Ga.  
 GEORGE GLEEN . . . . . Chickamauga, Ga.  
 DIXON GLOVER . . . . . Monticello, Ga.  
 HERMAN GLOVER . . . . . Cleveland, Ga.  
 ELI GOODE . . . . . Hawkinsville, Ga.  
 CARY GORDY . . . . . LaGrange, Ga.  
 RICHARD GRANT . . . . . Cornelia, Ga.  
 THOMAS GRAVES . . . . . Fort Gaines, Ga.





FRESHMEN

GEORGE GREEN . . . . .	Bostwick, Ga.	ROBERT HARRIS . . . . .	Lexington, Ga.
FURMAN GREER . . . . .	Gainesville, Ga.	JAMES HARTLEY . . . . .	Hollywood, Fla.
KENNETH GRIFFIN . . . . .	Homer, Ga.	JOEL HATCHER . . . . .	Griffin, Ga.
HELEN GRIZZLE . . . . .	Buford, Ga.	MARION HATCHER . . . . .	Macon, Ga.
CHARLES HALL . . . . .	Lavonia, Ga.	JAMES HENDERSON . . . . .	Hampton, Ga.
DAVID HAMILTON . . . . .	Atlanta, Ga.	PETE HENDERSON . . . . .	Wadley, Ga.
JACK HAMILTON . . . . .	Buford, Ga.	HENRY HEARN . . . . .	Griffin, Ga.
WILLIAM HARDING . . . . .	Dahlonega, Ga.	JOHN HERRING . . . . .	Tifton, Ga.
WYNELLE HARDY . . . . .	Asheville, N. C.	ALBERT HICKS . . . . .	Adel, Ga.
CHARLES HARRIS . . . . .	Commerce, Ga.	PARKS HICKS . . . . .	Decatur, Ga.

## FRESHMEN

RUTH HICKS . . . . .	Lavonia, Ga.	BILL HOUSTON . . . . .	Swainsboro, Ga.
CHARLES HILBUN . . . . .	Dublin, Ga.	CLAYTON HUCKABY . . . . .	Griffin, Ga.
HAROLD HILL . . . . .	Roswell, Ga.	J. B. HUDSON . . . . .	Blue Ridge, Ga.
MARY JEAN HILL . . . . .	Winder, Ga.	TOMMY HUFF . . . . .	Lawrenceville, Ga.
HOWELL HOLBROOK . . . . .	Commerce, Ga.	MARY LOUISE HUFF . . . . .	Buckhead, Ga.
GEORGE HOLLIMAN . . . . .	Warrenton, Ga.	COLLEEN HUGHES . . . . .	Oakwood, Ga.
BYRON HOLTON . . . . .	Camilla, Ga.	WILLIAM HUGHES . . . . .	Bremen, Ga.
RICHARD HOOTEN . . . . .	Thomaston, Ga.	JACK HULSEY . . . . .	Gainesville, Ga.
TOM HORNE . . . . .	Chattanooga, Tenn.	CHARLES HULSEY . . . . .	Dalton, Ga.
OWEN HOUSE . . . . .	Thomasville, Ga.	BOB HUMPHREY . . . . .	Swainsboro, Ga.





### FRESHMEN

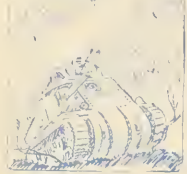
ALFORD HUNT . . . . . Camak, Ga.  
 JAMES HUNT . . . . . Mt. Vernon, Ga.  
 LINDSEY HUNT . . . . . College Park, Ga.  
 FAIN HUTCHERSON . . . . . Adairsville, Ga.  
 HENRY HUTCHERSON . . . . . Talbotton, Ga.  
 THOMAS HUTCHERSON . . . . . Wrightsville, Ga.  
 FRANCES IRWIN . . . . . Albany, Ga.  
 EDDIE JACKSON . . . . . Calhoun, Ga.  
 FLORENCE JACKSON . . . . . Toombsboro, Ga.  
 NOEL JACKSON . . . . . Woodcliff, Ga.

VICTOR JOHNSON . . . . . Covington, Ga.  
 THOMAS JIMMERSON . . . . . Unadilla, Ga.  
 CHARLES JOHNS . . . . . Toccoa, Ga.  
 EUGENE JOHNS . . . . . LaGrange, Ga.  
 DENTON JOHNSON . . . . . Columbus, Ga.  
 BILLY JONES . . . . . Jeffersonville, Ga.  
 EMMETT JONES . . . . . Yazoo City, Miss.  
 ROBERT KEENER . . . . . Decatur, Ga.  
 EMORUTH KEITH . . . . . Clermont, Ga.  
 ROY KELLY . . . . . Monticello, Ga.

## FRESHMEN

SAM KELLY . . . . .	Jefferson, Ga.	DENNIS LAWRENCE . . . . .	Eatonton, Ga.
MARGARET KENNEDY . . . . .	Atlanta, Ga.	WILLIAM LEDFORD . . . . .	Vidalia, Ga.
STOKES KENNEMUR . . . . .	Whigham, Ga.	JOHNNY LEE . . . . .	Flowery Branch, Ga.
CLIFF KING . . . . .	Albany, Ga.	JOHN LEWIS . . . . .	Swainsboro, Ga.
WALTER KINSMAN . . . . .	Griffin, Ga.	HENRY LIPHAM . . . . .	LaGrange, Ga.
MELL KITCHENS . . . . .	Chatsworth, Ga.	BILL LIPSCOMB . . . . .	Gainesville, Ga.
KATHRYN KNOWLES . . . . .	Ashburn, Ga.	JAMES LONGINO . . . . .	College Park, Ga.
MARY KNOX . . . . .	Martin, Ga.	THOMAS LOVETT . . . . .	Tennille, Ga.
LILLIAN LANGLEY . . . . .	Tate, Ga.	RICHARD LOWREY . . . . .	Preston, Ga.
HAROLD LATHAM . . . . .	Gainesville, Ga.	WILLIAM LUKE . . . . .	Nashville, Ga.





FRESHMEN

GEORGE McARTHUR . . . . . Valdosta, Ga.  
 JOHN McCALLA . . . . . Newnan, Ga.  
 JEFF McCONNELL . . . . . Commerce, Ga.  
 HELEN McELREATH . . . . . Cartersville, Ga.  
 CHARLES McEVER . . . . . Gainesville, Ga.  
 STUART McGARITY . . . . . Athens, Ga.  
 JACK McKIBBON . . . . . Gainesville, Ga.  
 ROBERT McKINNON . . . . . Cusseta, Ga.  
 ANNE McLANEY . . . . . Rome, Ga.  
 DONALD McLAUGHLIN . . . . . College Park, Ga.

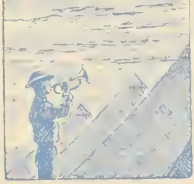
BILL McLENDON . . . . . Chamblee, Ga.  
 MARTHA McLENDON . . . . . Decatur, Ga.  
 DAN McMANUS . . . . . Macon, Ga.  
 HOLLY McMICHAEL . . . . . Sandersville, Ga.  
 HOLLAND MANGUM . . . . . Gainesville, Ga.  
 WHEELER MANIS . . . . . Subligna, Ga.  
 JOE MANRY . . . . . Edison, Ga.  
 McKINLEY MARTIN . . . . . Elberton, Ga.  
 WILLIAM MARTIN . . . . . Hilton, Ga.  
 EMORY MATTHEWS . . . . . Macon, Ga.

## FRESHMEN

HELEN MAXWELL . . . . . Lexington, Ga.  
 ROBERT MAXWELL . . . . . Lexington, Ga.  
 LAMAR MAYS . . . . . Jackson, Ga.  
 MORTIMER MEADERS . . . . . Covington, Ga.  
 JEAN MILLER . . . . . Sandersville, Ga.  
 JEAN MILLER . . . . . Gainesville, Ga.  
 HUGH MILLS . . . . . Albany, Ga.  
 ERNEST MINGLEDORFF . . . . . Springfield, Ga.  
 FREDERICK MINGLEDORFF . . . . . Hinesville, Ga.  
 FRANCES MITCHELL . . . . . Crawfordville, Ga.

JANE MITCHELL . . . . . Toccoa, Ga.  
 MARY MOORE . . . . . Decatur, Ga.  
 FRED MOORMAN . . . . . Dublin, Ga.  
 FRED MURPHEY . . . . . Thomaston, Ga.  
 TOM MURPHEY . . . . . Bremen, Ga.  
 BILL MURRAY . . . . . Ashburn, Ga.  
 WILLOUGHBY NELSON . . . . . Mt. Pleasant, Tenn.  
 MARIE NIX . . . . . Dalton, Ga.  
 JOE NORTHCUTT . . . . . College Park, Ga.  
 JAMES OSBORNE . . . . . Ellijay, Ga.





FRESHMEN

PAULINE OUZTS . . . . . Seneca, S. C.  
 FRANCES PADGETT . . . . . Rome, Ga.  
 CHARLES PARIS . . . . . Alpharetta, Ga.  
 AMY RUTH PARKER . . . . . Winder, Ga.  
 JAMES PATRICK . . . . . Atlanta, Ga.  
 LARY PEPPERS . . . . . Loganville, Ga.  
 JACK PERDUE . . . . . Thomaston, Ga.  
 BOB PERRY . . . . . Thomaston, Ga.  
 WINFRED PHILLIPS . . . . . Bainbridge, Ga.  
 WALTER PITTMAN . . . . . Thomasville, Ga.

CAROLINE PLEXICO . . . . . Gainesville, Ga.  
 JOHN PRESTON . . . . . Cross City, Fla.  
 CLIFF PRINCE . . . . . Dublin, Ga.  
 JARRETT PRYOR . . . . . Fitzgerald, Ga.  
 JOHN REED . . . . . Lexington, Ga.  
 LIN REED . . . . . Swainsboro, Ga.  
 DANIEL RHODES . . . . . East Point, Ga.  
 JACK RHODES . . . . . Washington, Ga.  
 MAJOR RICE . . . . . Byron, Ga.  
 ROBERT RICE . . . . . Elberton, Ga.



FRESHMEN

HAZEL RICHARDSON . . . . . Hartwell, Ga.  
 HUGH RIDDLE . . . . . Charlotte, N. C.  
 WORDE RIDEN . . . . . Madison, Ga.  
 JAMES ROBERTS . . . . . Douglas, Ga.  
 LEWIS ROBERTS . . . . . Vidalia, Ga.  
 ROBERT ROBERTS . . . . . Immokalee, Fla.  
 IRIS ROGERS . . . . . Sandersville, Ga.  
 CLARENCE ROSSER . . . . . Herndon, Ga.  
 WILLIAM ROUNTREE . . . . . Swainsboro, Ga.  
 WALTER ROZAR . . . . . Eastman, Ga.

JAMES RUDOLPH . . . . . Gainesville, Ga.  
 JOHN RUSSELL . . . . . Waverly, Ga.  
 JACK RUTHERFORD . . . . . Nashville, Ga.  
 JIMMIE SACKELLARES . . . . . Fort Valley, Ga.  
 TOM SCHLIESTETT . . . . . Cedartown, Ga.  
 STUART SCHWARTZ . . . . . Macon, Ga.  
 TIPTON SEATON . . . . . Cohutta, Ga.  
 JOHN SHEEHAN . . . . . Macon, Ga.  
 ROBERT SHANKLE . . . . . Chickamauga, Ga.  
 MARY SHANNON . . . . . Jeffersonville, Ga.





FRESHMEN

GEORGE SHEPPARD . . . . .	Cordele, Ga.	FELIX SMITH . . . . .	Cordele, Ga.
BILL SHEPPARD . . . . .	Edison, Ga.	HAROLD SMITH . . . . .	Macon, Ga.
EDWARD SHEPPARD . . . . .	Millen, Ga.	JACK SMITH . . . . .	Decatur, Ga.
JACK SHULER . . . . .	Griffin, Ga.	JIMMIE SMITH . . . . .	Dahlonega, Ga.
JOE SIMONS . . . . .	Elijay, Ga.	LUTHER SMITH . . . . .	Waycross, Ga.
WILLIAM SIMPSON . . . . .	Richland, Ga.	MARGARET SMITH . . . . .	Dahlonega, Ga.
EDDIE SIMS . . . . .	Commerce, Ga.	LAWSON SOSEBEE . . . . .	Cumming, Ga.
ARTHUR SMITH . . . . .	Cumming, Ga.	DICK SPANGLER . . . . .	Griffin, Ga.
BEN SMITH . . . . .	Cumming, Ga.	LEE SPEARS . . . . .	Canton, Ga.
DANIEL SMITH . . . . .	Stone Mountain, Ga.	CHARLES STEED . . . . .	Fitzgerald, Ga.

## FRESHMEN

MERRILL STEWART . . . . . Leesburg, Ga.	THOMAS TRIMBLE . . . . . Macon, Ga.
GUY STONE . . . . . Glenwood, Ga.	CHARLES TRUSSELL . . . . . Sandersville, Ga.
ROBERT STOREY . . . . . Rome, Ga.	ROY TURNER . . . . . Ft. McPherson, Ga.
WESLEY STODDARD . . . . . Atlanta, Ga.	MILLARD TUTWILER . . . . . Athens, Ga.
PAUL SUDAN . . . . . Atlanta, Ga.	JIM UPSHAW . . . . . Covington, Ga.
EDWIN SURRENCY . . . . . Jessup, Ga.	CECIL VANDIVER . . . . . Jefferson, Ga.
ABBOTT TAYLOR . . . . . College Park, Ga.	BILLY VANN . . . . . Swainsboro, Ga.
CHARLES TAYLOR . . . . . Camilla, Ga.	HUGH WAGES . . . . . Lawrenceville, Ga.
QUIDA TAYLOR . . . . . Lawrenceville, Ga.	BILL WALKER . . . . . Avondale Estates, Ga.
BETTY THOMAS . . . . . Athens, Ga.	LOWE WALL . . . . . Allentown, Ga.
ELYCE THOMPSON . . . . . Cochran, Ga.	HAROLD WALLACE . . . . . Rutledge, Ga.
GEORGIA TRAPP . . . . . Hamilton, Ga.	JAMES WALLIS . . . . . Lovejoy, Ga.





### FRESHMEN

J. W. WEBB . . . . .	Chickamauga, Ga.	SAMUEL WOODLIFF . . . . .	Flowery Branch, Ga.
JAMES WEST . . . . .	Sandersville, Ga.	EDWIN WORRELL . . . . .	Batesburg, S. C.
ALBERT WESTMORELAND . . . . .	Jefferson, Ga.	ROBERT WORRELL . . . . .	Batesburg, S. C.
JOHN WHEELER . . . . .	Homerville, Ga.	CHARLES WRIGHT . . . . .	Alpharetta, Ga.
HENRY WILEY . . . . .	Covington, Ga.	DOROTHY WYNNE . . . . .	Crawfordville, Ga.
EARL WILLIAMS . . . . .	Vidalia, Ga.	JOHN WYNNE . . . . .	Perry, Ga.
JOHN WILLIAMS . . . . .	Demorest, Ga.	LEWIS YARBOROUGH . . . . .	Thomaston, Ga.
GENEVA WIMPEY . . . . .	Ellijay, Ga.	LEROY YATES . . . . .	Quitman, Ga.
WILLIAM WINGATE . . . . .	Ellijay, Ga.	GLENN YORK . . . . .	Cedartown, Ga.
ROBERT WISE . . . . .	Savannah, Ga.	SARA YOUMANS . . . . .	Swainsboro, Ga.
JAMES WOOD . . . . .	Canton, Ga.	EARL ZIMMERMAN . . . . .	Macon, Ga.
IRWIN WOOD . . . . .	Albany, Ga.		

PARADING....



....THE CADETS

## MILITARY DEPARTMENT

North Georgia College's Military Department, long hailed as one of the greatest in the nation, has carried on the "Excellent" tradition started in 1928, and continued each year since, of qualifying as one of the War Department-designated Honor Schools.

Lieutenant Colonel James E. Matthews, P. M. S. & T., Major P. M. Hutcherson and Captain Richard S. McConnell, Assistant P. M. S. & T.'s, and Sergeant G. McCrimmon, along with the attributes of the Cadet Officers and Non-Commissioned Officers, prepare a thorough system of training for the Corps of Cadets. Through the endeavors of the Military officials, N. G. C. has emulated the traditions of West Point; in like manner N. G. C. may be called "Georgia's West Point."



LT. COL. JAMES E. MATTHEWS  
Professor of Military Science  
and Tactics



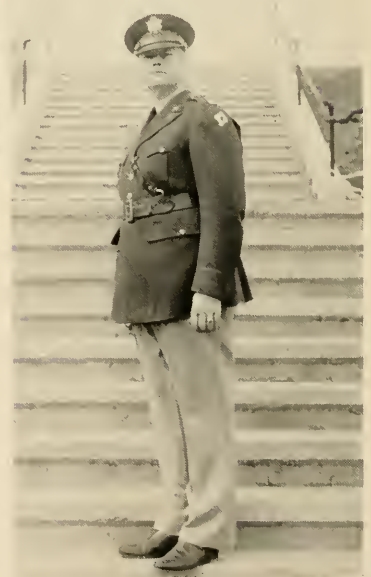
COLONEL J. E. MATTHEWS



MAJOR P. M. HUTCHERSON



SERGEANT G. McCRIMMON



CAPTAIN R. S. McCONNELL



THE BATTALION



13896



SUNDAY PARADE



"OFFICERS CENTER"



**BATTALION STAFF**

LIEUTENANT COLONEL DAVIS . . . . . Battalion Commander  
MAJOR THOMAS . . . . . Executive Officer  
CAPTAIN KEY (Adjutant) . . . . . S-1  
CAPTAIN DAVIDSON . . . . . S-2  
CAPTAIN DILLASHAW . . . . . S-3  
CAPTAIN OWENS . . . . . S-4  
LIEUTENANT PRESTON . . . . . Assistant S-1  
LIEUTENANT ETHERIDGE . . . . . Assistant S-2  
LIEUTENANT FORBES . . . . . Assistant S-3  
SERGEANT MISENHEIMER . . . . . Master Sergeant



**COLONEL DAVIS**  
Battalion Commander



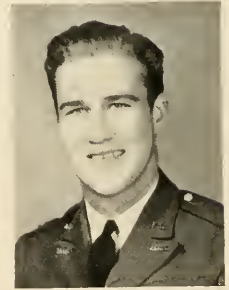


CAPTAIN McWHORTER

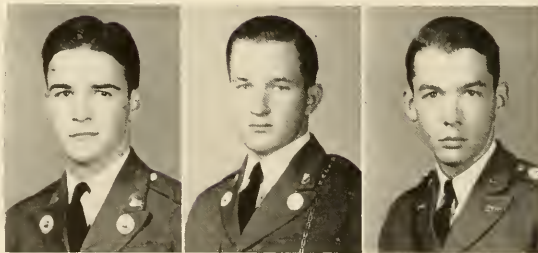
# "A" COMPANY

CAPTAIN H. BOYD McWHORTER  
Company Commander

FIRST LIEUTENANT MILLER . . . . . First Platoon Commander  
 SECOND LIEUTENANT LYLE . . . . . Second Platoon Commander  
 SECOND LIEUTENANT MURRAH . . . . . Third Platoon Commander  
 SECOND LIEUTENANT CROWLEY . . . . . Athletic Officer  
 SERGEANT SHERRER . . . . . First Sergeant



LT. MILLER



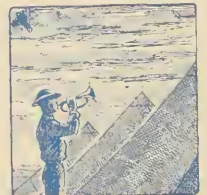
LT. LYLE

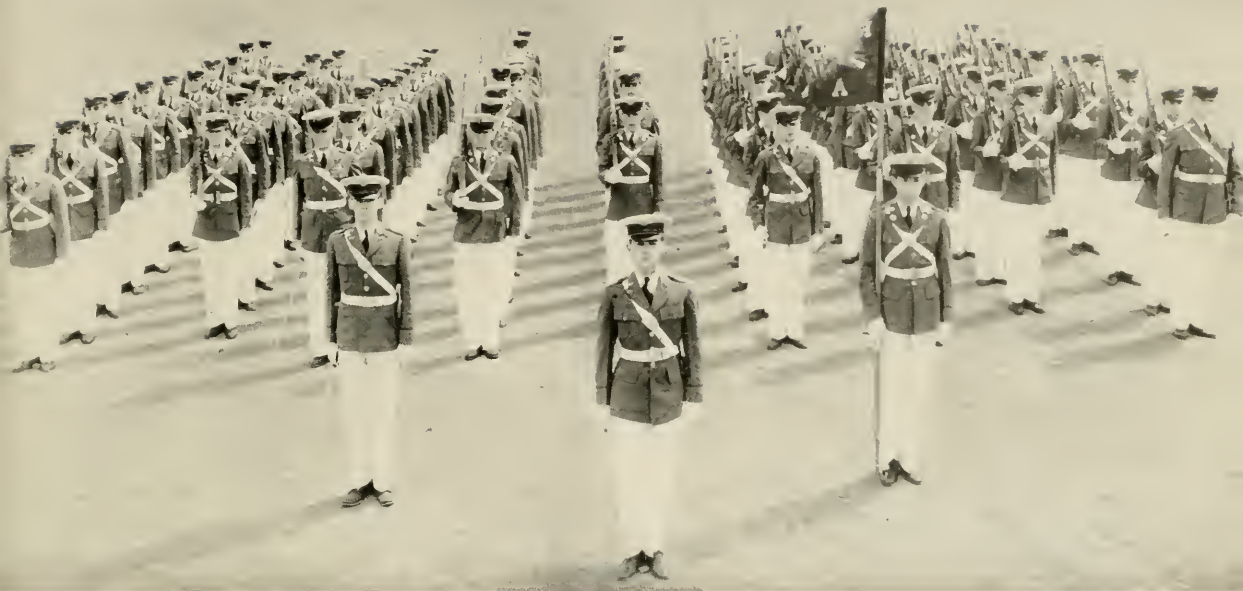
LT. MURRAH

LT. CROWLEY



SGT. SHERRER





"A" COMPANY

COMPANY ROSTER

**Captain**

H. B. McWHORTER

**First Lieutenant**

J. E. MILLER

**Second Lieutenants**

E. CROWLEY

C. LYLE

M. MURRAH

**First Sergeant**

J. E. SHERRER

**Guidon Bearer**

E. ALFORD

**Staff Sergeants**

H. ALLEN

H. INMAN

J. PRUETT

**Line Sergeants**

M. L. IVEY

V. IVEY

L. TEASLEY

**Squad Sergeants**

M. BRIDGES

A. BROWN

A. DIGBY

G. ELLIOTT

W. GARRISON

E. KELLAR

J. MAUTHE

R. TIMMONS

J. WHITE

**Privates**

T. ABERCROMBIE

L. ACCORDINI

G. ALDAY

F. ANDREWS

P. ANDREWS

J. ATKINS

J. BARTLETT

A. BARRON

F. BARTON

B. BATEMAN

J. BLACKMON

D. BRANAN

B. CAIN

D. CALHOUN

H. CAMP

J. CARNEY

T. CARNEY

J. CARTER

H. CHICK

G. CHRISTIAN

B. COLLEY

J. COOK

M. CRAIG

H. CREEL

P. DAVIS

W. DIXON

T. EAST

J. ESTES

P. FARKAS

W. GILBERT

C. HARRIS

R. HARRIS

J. HARTLEY

J. HENDERSON

M. HERRING

C. HILBURN

C. H. HILL

J. H. HILL

H. HUTCHERSON

N. JACKSON

S. KELLY

W. KINSMAN

J. LAMBERT

H. LATHAM

D. LAWRENCE

F. LEATHERS

W. LEDFORD

B. MAXWELL

H. MILLS

L. MOORE

C. MORRIS

W. MURRAY

A. OVERSTREET

C. PARIS

W. PITTMAN

T. RUSSEL

W. SAVAGE

E. SIMS

T. SOSEBEE

A. SMITH

D. SMITH

H. SMITH

D. SPANGLER

T. STEPHENS

P. SUDAN

A. TAYLOR

R. TURNER

L. WALL

G. WEATHERLY

J. WEST

J. WOOD

J. WOODY

L. YARBROUGH

# "B" COMPANY



CAPTAIN McKAY

CAPTAIN JACK McKAY  
Company Commander



LT. BRACKETT

FIRST LIEUTENANT BRACKETT . . . . . First Platoon Commander  
 SECOND LIEUTENANT GREEN . . . . . Second Platoon Commander  
 SECOND LIEUTENANT HOOPER . . . . . Third Platoon Commander  
 SECOND LIEUTENANT KENNEMUR . . . . . Athletic Officer  
 SERGEANT JONES . . . . . First Sergeant



LT. GREEN



LT. HOOPER

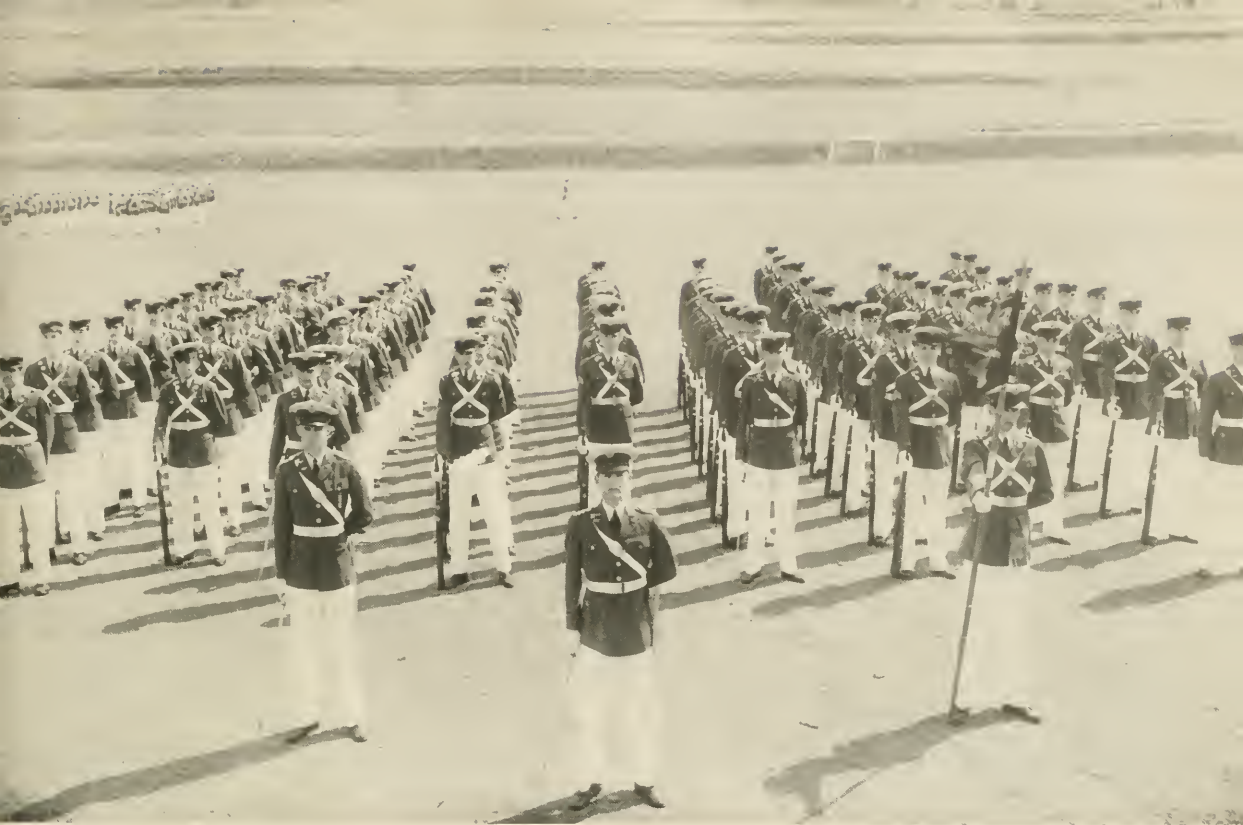


LT. KENNEMUR



SGT. JONES





## “B” COMPANY

### COMPANY ROSTER

#### Captain

JACK C. MCKAY

#### First Lieutenant

W. H. BRACKETT

#### Second Lieutenants

G. S. GREEN

G. HOOPER

J. KENNEMUR

#### First Sergeant

J. JONES

#### Guidon Bearer

R. WYNNE

#### Staff Sergeants

W. BIRD

D. CUMBAA

H. MULL

#### Line Sergeants

R. NEELY

A. WHALEN

F. WOODWARD

#### Squad Sergeants

W. ADAMS

W. CUTTS

G. DRAKE

W. LEE

E. RAY

T. SAUNDERS

E. STONE

J. THURMAN

E. TURNER

#### Privates

W. BANKS

H. BARTON

M. BEARD

H. BLACKWELL

H. BOWERS

D. BUCKALEW

C. BURTZ

H. BUXTON

T. CARROLL

R. CARTER

C. CASH

G. COOK

F. COOK

M. DANIEL

J. DAVIS

J. DEADWYLER

C. DUNCAN

F. DURDEN

J. DYER

L. ELAM

J. FITZPATRICK

E. FLETCHER

R. GAINES

J. GAINEY

C. GARRETT

H. GLOVER

T. GRAVES

F. GREEN

W. GROOVER

J. HAMILTON

H. HAMMOND

W. HATCHER

A. HICKS

O. HOUSE

W. HOUSTON

T. HUFF

J. HULSEY

L. HUNT

A. JOHNSON

E. JONES

S. KENNEMUR

A. KEENER

E. KITE

G. LATHAM

W. LUKE

W. LUNSFORD

G. McARTHUR

R. McFINNON

J. McKIBBON

D. McMANUS

E. MATTHEWS

M. MEADOWS

E. MINGLEDOROFF

B. MOORMAN

F. MURPHY

J. OSBURN

L. OGLESBY

L. PEPPERS

C. PRINCE

M. RICE

W. RIDEN

R. ROBERTS

J. RUTHERFORD

J. SACKELLARES

S. SCHWARTZ

J. SHEEHAN

J. SIMONS

E. TRUITT

M. TUTWYLER

H. WAGES

H. WAGNON

B. WALKER

P. WEST

H. WESTMORELAND

J. WIKLE

C. WILEY

C. WILLIAMS

S. WILSON

B. WINGATE

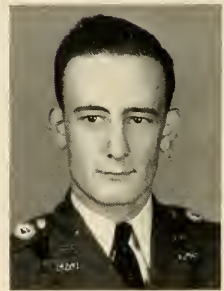
J. WOODLIFF



CAPTAIN STARR

# "C" COMPANY

CAPTAIN J. W. STARR  
Company Commander



LT. MANDEVILLE

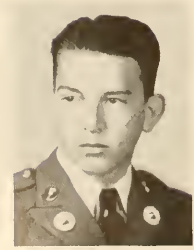
FIRST LIEUTENANT MANDEVILLE . . . . . First Platoon Commander  
 SECOND LIEUTENANT MILLER . . . . . Second Platoon Commander  
 SECOND LIEUTENANT BLANCHARD . . . . . Third Platoon Commander  
 SECOND LIEUTENANT MYRON . . . . . Athletic Officer  
 SERGEANT HARRIS . . . . . First Sergeant



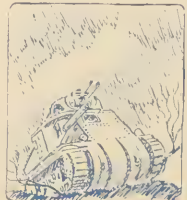
LT. MILLER

LT. BLANCHARD

LT. MYRON



SGT. HARRIS





## “C” COMPANY

### COMPANY ROSTER

#### Captain

J. W. STARR

#### First Lieutenant

J. B. MANDEVILLE

#### Second Lieutenants

C. P. BLANCHARD  
H. C. MILLER  
H. MYRON

#### First Sergeant

J. R. HARRIS

#### Guidon Bearer

W. CAGLE

#### Staff Sergeants

J. HOGG  
M. A. JONES  
J. L. SMITH

#### Line Sergeants

R. BOLING  
P. COLLINS  
J. HICKS

#### Squad Sergeants

T. BARKSDALE  
B. COCHRAN  
M. CLARK  
J. JARRARD  
J. KINKEAD  
R. MATHIS  
C. ROBINSON  
J. SCOTT  
B. SPAINHOUR

#### Privates

A. ADKINS  
A. ANDREWS  
R. ANDREWS

C. ARMSTRONG  
J. ARMSTRONG  
R. W. BALLARD  
D. BEATY  
R. BECKHAM  
L. BODE  
W. A. BURCH  
R. BUSH  
J. BUTLER  
M. CHASTAIN  
C. COPELAND  
C. DUNCAN  
B. EVANS  
W. E. FORSYTH  
B. GEORGE  
E. W. GOODE  
R. R. GRANT  
D. HAMILTON  
P. HENDERSON  
B. HOLTON  
R. HOOTEN  
P. HICKS

J. B. HUDSON  
B. HUMPHREY  
D. F. JONES  
B. KING  
C. KING  
M. KITCHEN  
J. LONGINO  
S. MAGARGEE  
W. MANIS  
W. B. MARTIN  
H. MURPHY  
W. NELSON  
J. NORTHCUTT  
C. OUZTS  
J. PERDUE  
B. PERRY  
J. L. PLEDGER  
R. PORTER  
J. PRYOR  
B. PURDY  
G. RADFORD  
L. W. REED

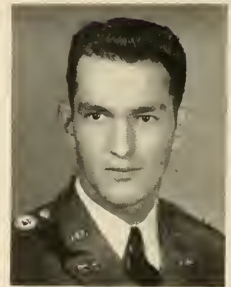
H. RIDDLE  
A. ROLLINS  
C. ROSSER  
W. E. ROUNDTREE  
J. SAXON  
G. B. SCOTT  
G. SHEPHERD  
B. SMITH  
F. M. SMITH  
J. B. SMITH  
G. STONE  
C. TAYLOR  
J. T. TRIMBLE  
W. E. VANN  
J. WALLIS  
R. WELDON  
G. WHITAKER  
J. WHITFIELD  
J. M. WILLIAMS  
J. W. WILLIAMS  
J. WOOD  
J. WYNNE

# "D" COMPANY



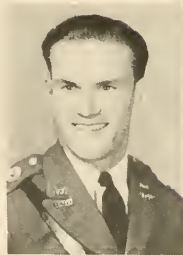
CAPTAIN WORSHAM

CAPTAIN TOM WORSHAM  
Company Commander



LT. ROQUEMORE

FIRST LIEUTENANT ROQUEMORE . . . . . First Platoon Commander  
 SECOND LIEUTENANT BASS . . . . . Second Platoon Commander  
 SECOND LIEUTENANT GLEATON . . . . . Third Platoon Commander  
 SECOND LIEUTENANT GRIMES . . . . . Athletic Officer  
 SERGEANT MITCHELL . . . . . First Sergeant



LT. BASS



LT. GLEATON



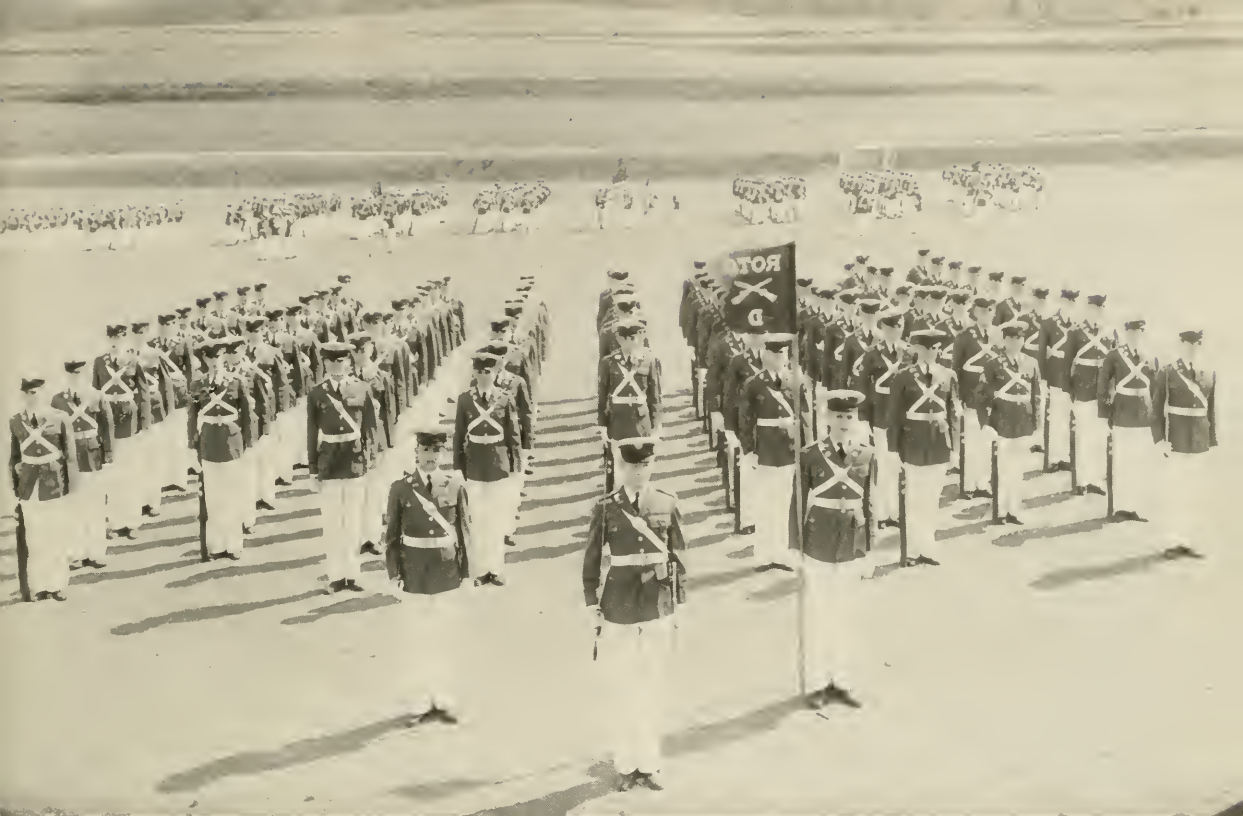
LT. GRIMES



SGT. MITCHELL







## “D” COMPANY

### COMPANY ROSTER

#### Captain

T. F. WORSHAM

#### First Lieutenant

B. ROQUEMOPE

#### Second Lieutenants

P. BASS

S. GLEATON

W. HENDRICKS

#### First Sergeant

T. K. MITCHELL

#### Guidon Bearer

K. STEPHENS

#### Staff Sergeants

J. McCOY

J. MALEY

J. RUSSELL

#### Line Sergeants

J. CASH

C. WILLIAMS

#### Squad Sergeants

I. ADAMS

C. BATES

H. CONNER

H. DORRIS

R. GAINEY

J. GREEN

C. HEATH

B. HILL

E. HUDSON

#### Privates

W. ALEXANDERS

V. ALFORD

E. AYERS

E. BALDWIN

B. BLACKWELL

J. BLOGETT

J. BOGLE

T. BOLING

K. CHAMBERS

J. CHAPMAN

C. CHASTAIN

T. CHASTAIN

J. COWART

H. CRONIC

R. CURTISS

A. DALEY

R. DENNARD

R. ELLIOT

J. ELROD

G. ETHRIDGE

J. FAIRCLOTH

M. FORT

H. GLENN

D. GLOVER

K. GRIFFIN

B. GRIMES

B. HARDING

F. HATCHER

H. HEARN

B. HILL

H. HOLBROOK

G. HOLLIMAN

T. HORN

H. HUGHES

C. HULSEY

A. HUNT

J. HUNT

T. HUTCHERSON

T. JIMMERSON

C. JOHNS

G. JOHNSTON

R. JONES

R. KELLEY

B. LINDSEY

R. LIPHAM

W. LIPSCOMB

T. LOVETT

M. LOWREY

H. MANGUM

J. MANRY

W. MATHIS

E. MAYO

L. MAYS

J. McCALLA

J. McCONNELL

F. MINGLEDROFF

D. NEWBERN

B. O'KELLEH

R. PARKS

R. RICE

J. PITTARD

J. RHODES

J. RUDOLPH

R. SHANKLE

B. SHEPPARD

F. SNELL

C. SIMPSON

J. STARR

M. STEWART

W. STUDDARD

E. SURRENCY

J. UPSHAW

C. VANDIVER

H. WALLACE

J. WEBB

E. WILLIAMS

D. WILLIAMSON

J. WILSON

J. WOODWARD

R. WISE

E. WRIGHT



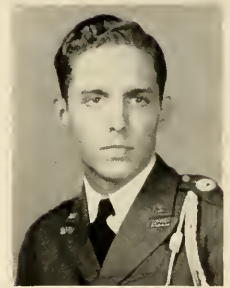
CAPTAIN PATTERSON

# BAND

## HONOR COMPANY

CAPTAIN W. C. PATTERSON  
Company Commander

FIRST LIEUTENANT OESTERREICHER . . . . . Platoon Commander  
 SECOND LIEUTENANT PATTERSON . . . . . Platoon Commander  
 SECOND LIEUTENANT BEASLEY . . . . . Platoon Commander  
 SECOND LIEUTENANT RECHSTEINER . . . . . Athletic Officer  
 SERGEANT BARR . . . . . First Sergeant  
 SERGEANT IRWIN . . . . . Drum Major



LT. OESTERREICHER



LT. PATTERSON



LT. BEASLEY



LT. RECHSTEINER



SGT. BARR



DRUM MAJOR IRWIN



# BAND

## HONOR COMPANY

### COMPANY ROSTER

#### **Captain**

BILL PATTERSON

#### **First Lieutenant**

D. OESTERREICHER

#### **Second Lieutenants**

G. BEASLEY  
G. PATTERSON  
R. RECHSTEINER

#### **First Sergeant**

B. BARR

#### **Staff Sergeants**

H. DINGLER  
J. IRWIN  
P. ODUM

#### **Line Sergeants**

B. STILES  
H. RECHSTEINER

#### **Privates**

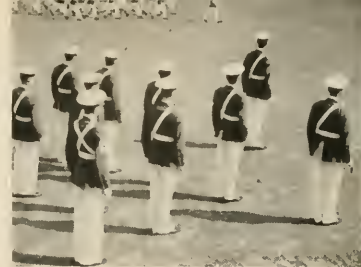
S. ABSTON  
J. BARROWS  
B. BENNETT  
N. BEVERLY  
P. CAWTHON  
J. CHAMBERLAIN  
R. DUNAHOO  
D. FLOYD  
G. FITTS  
F. GREER  
C. HALL  
J. HICKS

S. HUTCHERSON

E. JACKSON  
M. MARTIN  
C. McEVER  
W. McLENDON  
S. McGARITY  
C. MOORE  
G. MOORE  
W. PHILIPS  
R. PIRKLE  
J. PRESTON  
J. REED  
D. RHODES  
E. SHEPPARD  
J. SHULER  
R. WORRELL  
L. YATES  
G. YORK



The Colors



Dress Parade



Company A Passing in Review



"Eyes Right"

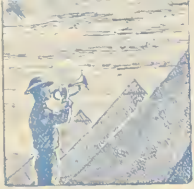
Major Hutcherson Inspects the First Platoon of Company C.



DEVELOPING....



....THE ATHLETES



# SPORTS AT N. G. C.

J. B. SCEARCE  
Coach

D. V. JONES  
Assistant Coach

North Georgia College not only develops clean minds. The athletic department has as its purpose the development of clean bodies as well. We boast one of the best, most virile, and most well-developed intercollegiate and intramural athletic programs in the South. In this section we bring you scenes and scene-shifts which have served to develop N. G. C.'s 1942 athletes.

The college athletic program in the past year has been under the competent guidance of Coach J. B. Scarce and his able assistant, Coach D. V. Jones. They have not only coached and supervised all athletics, but have cooperated with the military department in conducting mass physical drill for the Cadet Corps. This has been a part of the effort of North Georgia College to aid in the national war effort, and it has been beneficial to every cadet.

Every cadet is reached through the physical drills and the virile, well-developed intramural athletic program. Intramural tournaments are held in softball, basketball, ping-pong, tennis, baseball, football, field hockey, cross country and track.

## VARSITY BASKETBALL TEAM

Standing, left to right: Hunt, Craig, Wise, Kennemur, McWhorter, Green, Chastain, Schwartz, Wiley, Perry, Boling, Manager. . . . Seated: Jones, Assistant Coach; Adams, Dillashaw, Baldwin, Mills, Lowrey, Scarce, Coach.





COACH JONES



CO-CAPTAINS  
DILLASHAW & ADAMS



COACH SCEARCE



ADAMS



BALDWIN



CHASTAIN



CRAIG

VARSITY BASKETBALL

'41-42 CAGE RECORD

N. G. C. . . . 46—Georgia Evening College	30
N. G. C. . . . 50—Reinhardt College . . .	10
N. G. C. . . . 63—Norman Junior College . . .	22
N. G. C. . . . 34—West Georgia College . . .	24
N. G. C. . . . 27—Tennessee Wesleyan . . .	37
N. G. C. . . . 39—Cumberland College (Ky.)	36
N. G. C. . . . 19—Abraham Baldwin Ag. . . .	28
N. G. C. . . . 49—Norman Junior College . . .	27
N. G. C. . . . 42—West Georgia College . . .	23
N. G. C. . . . 36—Gordon Military College . . .	42
N. G. C. . . . 54—Georgia Evening College	42
N. G. C. . . . 33—Abraham Baldwin Aggies	31
N. G. C. . . . 61—Young Harris College . . .	33
N. G. C. . . . 58—Tennessee Wesleyan . . .	35
N. G. C. . . . 34—Suc Bennett (Ky.) Col. . . .	36
N. G. C. . . . 30—Cumberland College . . .	42
N. G. C. . . . 31—Georgia Military College	46
11 won, 6 lost.	



DILLASHAW



GREEN



KENNEMUR



LOWRY



MCWHORTER



MILLS



PERRY



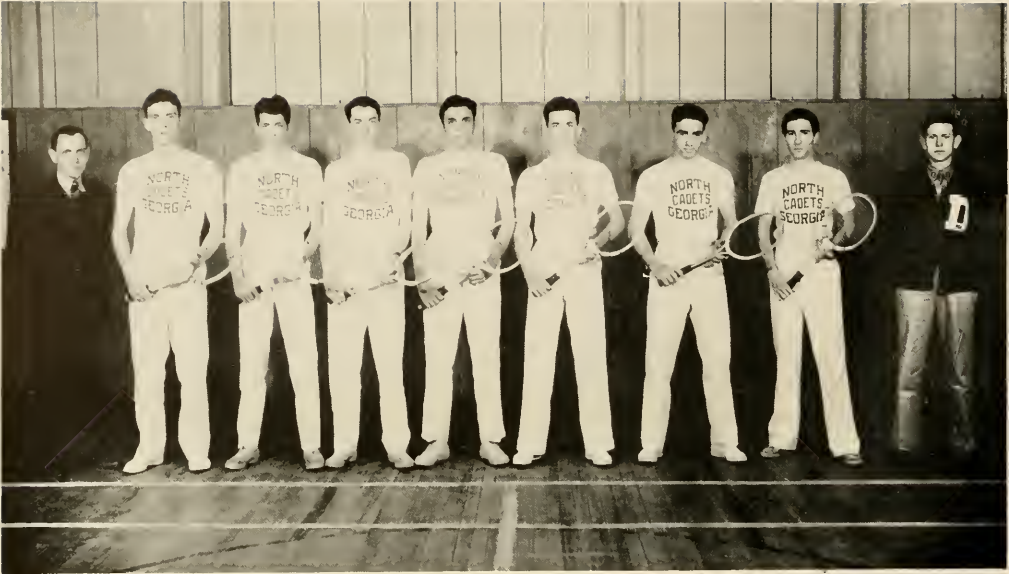
SCHWARTZ



WILEY



WISE



Left to right: Searce, coach; Savage, Sudan, Crowley, Williams, Jones, Starr, Porter, Boling, Manager.

### VARSITY TENNIS TEAM

The tennis team at N. G. C. has won the State Junior College championship for the past two years. Chances of repeating for the third straight year loom strong with four returning lettermen. These four men, Williams, Jones, Starr, and Crowley, aided by two promising freshmen, Sudan and Porter, should form another winning combination.



JONES



STARR



WILLIAMS



CROWLEY





Standing, left to right: Patterson, Hooper, Andrews, Jones, Misenheimer, Smith, Hardy, Rechsteiner. . . .  
Kneeling: Thomas, Bass, Davis, McLendon, Bates, Hill.

### RIFLE TEAM

Sparked by the talented shooting of Patterson, Jones, Davis, Hill, Bates, and others, this year's rifle team made a creditable showing. Led by Captain Patterson, the team fired matches against the University of Michigan, Mississippi, Maine, Pittsburgh, Montana State, Mississippi State, Clemson College, and Maryland. The squad also took part in the Fourth Corps Area match and the Hearst Trophy matches.



SERGEANT McCRIMMON  
Coach



JONES





**CHEERLEADERS**

Left to right: Hicks, McLaney, Cagle, Irwin, Barksdale, Nix, Collins, Mitchell.

**INTRAMURAL SPORTS**

**BOXING TOURNAMENT**

The annual freshman boxing tournament, a true test of courage and skill, revealed many sterling amateur pugilists in the ranks of the battalion. The contests were spirited and company spirit ran high.

Winners and their respective weights were: Jimmie Chapman, paperweight; Tommy Huff, flyweight; Stokes Kennemur, bantamweight; Clayton Huckaby, featherweight; Richard Grant, lightweight; Ed Baldwin, welterweight; W. T. Lipscomb, middleweight; Wheeler Manis, light-heavyweight; Millard Tutwiler, heavyweight.



*GRANT*



*HUCKABY*



*CHAPMAN*



*KENNEMUR*



*BALDWIN*



*LIPSCOMB*



*HUFF*



Company B, First Platoon, Softball Winners

First row, left to right: Groover, Kennemur, McKay. . . . Second row: Hooper, Roberts, Schwartz, Williams, C. . . . Third row: Hunt, Wiley, Fletcher.



Pruett, Ping-Pong Winner, Company A



Back-board Aces



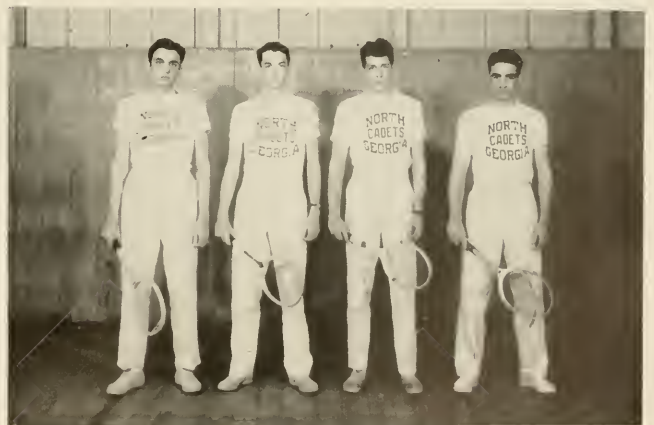
Company A, First Platoon, Basketball Champs.

Left to right: Mills, Pittman, Pruet, Sherrer, Turner, Dillashaw, Coach.



Cross Country Winner  
HOOPER

Cross Country Runner-up  
ABSTON



Semi-Finalists, Fall Tennis Tourney

Left to right: Williams, Crowley, Sudan, Starr.



"A sport for every girl, and a girl in every sport"

### CO-ED SPORTS

The Department of Physical Education for Women under the direction of Miss Sara Bruce promotes a program to mold character, develop bodies, and create and develop personalities. Recreational as well as educational activities are offered.

Activities offered are volleyball, tennis, softball, basketball, archery, badminton, ping-pong, bowling, hiking, shuffleboard, gymnastic exercises, folk, clog and tap dancing, and recreational games. Intramural tournaments are held in many of these.



SARA BRUCE  
Director of Intramurals

Varsity Basketball



SHANAHAN and HUGHES at Shuffleboard



ANNE—winner of the Fall tourney  
BUTCH—fixing things, as usual



YARBROUGH, COLLINS, WOFFORD, and TANNER  
Best bet for a Bull's Eye

A glimpse of First Aid being practiced



HAMPTON, CUTHBERTSON, and AULTMAN  
at softball



WEEMS and MILES  
Ground-Sticks, Ground-Sticks  
Ground-Sticks, Hit



MAGGIE and MISS BRUCE  
Talking things over



Freshman Individual and Combination Stunts



Keep your eye on that volley ball



A Strike for PEACOCK



Varsity Paddle Badminton

VIEWING . . .

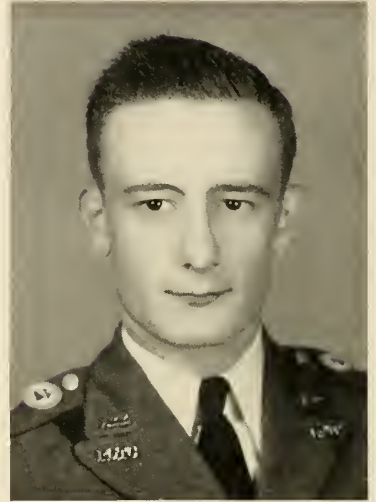


*The* ACTIVITIES

# THE CYCLOPS



OUZTS



MANDEVILLE

## THE CYCLOPS STAFF

CHARLIE V. OUZTS . . . . . Editor-in-Chief  
JAMES B. MANDEVILLE . . . . . Business Manager

The CYCLOPS is the mirror of student life and the mould of the cherished memories which mellow receding years and make old age relive the sentiments of the past. It is published annually by the corps of cadets and co-eds of North Georgia College.

MANDEVILLE and OUZTS Balancing The Budget.



The Editor at Work



## CYCLOPS STAFF

AGNEW ANDREWS . . . . . Editorial Staff  
 CARROLL ARMSTRONG . . . . . Assistant Editor  
 ROBERT BALLARD . . . . . Business staff  
 TOMMY BARKSDALE . . . . . Business Staff

GEORGE BEASLEY . . . . . Photographer  
 CLIFFORD BLANCHARD . . . . . Editorial Staff  
 MARION BRIDGES . . . . . Editorial Staff  
 MARY BARBARA CASON . . . . . Editorial Staff

BOBBY EVANS . . . . . Business Staff  
 EVELYN FLEMING . . . . . Art Editor  
 LILLIAN FULLER . . . . . Art Editor  
 BEN GRACE . . . . . Editorial Staff

GERTRUDE HAMPTON . . . . . Assistant Editor  
 MACK HERRING . . . . . Assistant Business Manager  
 JERRY HICKS . . . . . Business Staff  
 JIM HOGG . . . . . Editorial Staff

FRANCES IRWIN . . . . . Editorial Staff  
 JOHNNY IRWIN . . . . . Lay-out Editor  
 MARION JONES . . . . . Associate Editor  
 RALPH JONES . . . . . Sports Editor

ERNEST KELLAR . . . . . Assistant Editor  
 JACK KING . . . . . Editorial Staff  
 HOLLY McMICHAEL . . . . . Editorial Staff  
 STEVE MAGARGEE . . . . . Editorial Staff

HOLLAND MANGUM . . . . . Assistant Business Manager  
 ROSE MAY . . . . . Associate Business Manager  
 GENE PATTERSON . . . . . Editorial Staff  
 JARRATT PRYOR . . . . . Make-up Editor

BILL ROQUEMORE . . . . . Lay-out Editor  
 BRUCE SMITH . . . . . Business Staff  
 ERWIN SURRENCY . . . . . Business Staff  
 RAMSEY TRIMBLE . . . . . Editorial Staff

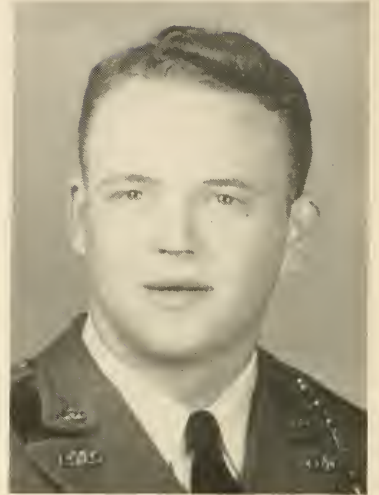
MAGGIE WEEMS . . . . . Sports Editor  
 VERA WHEELER . . . . . Editorial Staff  
 JIMMIE WHITFIELD . . . . . Business Staff  
 LEWIS YARBROUGH . . . . . Business Staff



# THE CADET BUGLER



PATTERSON



THOMAS

## THE CADET BUGLER STAFF

GENE PATTERSON . . . . . Editor-in-Chief  
FRANK THOMAS . . . . . Business Manager

The CADET BUGLER is published every three weeks by the students of North Georgia College. It expresses unbiased opinion of the students and tends to promote stronger co-operation between the students and administration. The newspaper has had a very successful year due to the hard working editor and the efficient business manager.

PATTERSON and THOMAS Planning an Issue of THE BUGLER



PATTERSON and THE BUGLER Before Going to Press

# THE CADET BUGLER STAFF

- GRADY ALDAY . . . . . Sports Staff  
 GEORGE BEASLEY . . . . . Staff Photographer  
 RUSSELL BOLING . . . . . Sports Staff  
 BETTY BROWN . . . . . News Staff  
 LILLIAN FULLER . . . . . Circulation Staff  
 FRANK GHEESLING . . . . . Circulation Staff  
 BEN GRACE . . . . . News Staff  
 JOHN HERRING . . . . . News Staff  
 JAMES HOGG . . . . . Circulation Staff  
 JOHN IRWIN . . . . . News Staff  
 MARION JONES . . . . . Circulation Manager  
 RALPH JONES . . . . . Sports Staff  
 ROY JOYNER . . . . . Exchange Editor  
 JACK KENNEMUR . . . . . News Staff  
 BILLY LEDFORD . . . . . Service Editor  
 RICHARD MATHIS . . . . . Sports Editor  
 JAMES MANDEVILLE . . . . . News Staff  
 CHARLIE OUZTS . . . . . News Staff  
 JARRATT PRYOR . . . . . News Staff  
 BILL ROQUEMORE . . . . . Associate Editor  
 JO SCOTT . . . . . Women's Sports  
 J. W. STARR . . . . . Sports Staff  
 MARGARET WEEMS . . . . . Feature Editor  
 VERA WHEELER . . . . . Feature Editor

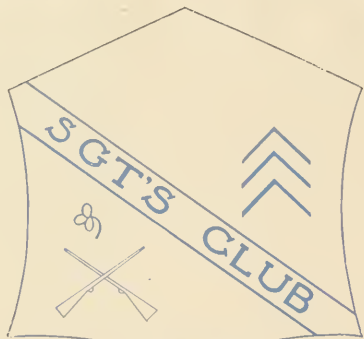




First row, left to right: Adams, Allen, Barksdale, Bates, Boling, Bridges, Brown. . . . Second row: Conner, Cumbaa, Digby, Dingler, Elliott, Gainey, Godfrey. . . . Third row: Harris, Heath, Hicks, Hill, Hogg, Hudson, Ivey.



IRWIN



## SERGEANT'S CLUB



McCONNELL

### OFFICERS

- |  |                 |
|--|-----------------|
| JOHN IRWIN . . . . .                   | President       |
| J. J. JONES . . . . .                  | Vice-President  |
| WILLIAM BIRD . . . . .                 | Secretary       |
| BILLY BARR . . . . .                   | Treasurer       |
| CAPTAIN RICHARD S. McCONNELL . . . . . | Faculty Adviser |



JONES

BIRD

BARR



First row, left to right: Jarrard, Joyner, M. Jones, R. Jones, Kellar, A. King, J. King. . . . Second row: Kinkead, McCoy, Maley, Mathis, Mauthe, Misenheimer, Mitchell. . . . Third row: Mull, Neeley, Odum, Parrott, Pirkie, Pruett, Ray. . . . Fourth row: Rechsteiner, Robinson, Russell, Sanders, Sherrer, Scott, Smith. . . . Fifth row: Spainhour, Starr, Stone, Timmons, Turner, Whalen, White.

## MEMBERS

W. A. ADAMS  
H. ALLEN  
T. BARKSDALE  
C. BATES  
R. BOLING  
M. BRIDGES  
A. BROWN  
H. CONNER  
D. CUMBAA  
A. DIGBY  
H. DINGLER  
G. ELLIOTT

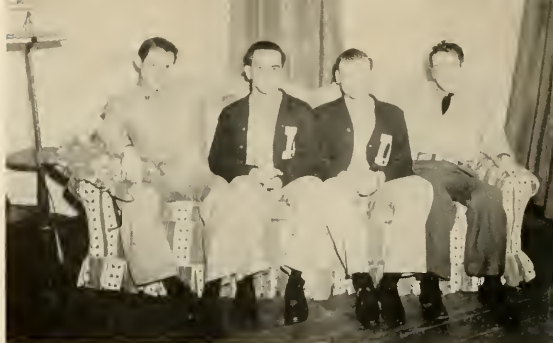
R. GAINEY  
H. GODFREY  
J. HARRIS  
C. HEATH  
J. HICKS  
W. HILL  
J. HOGG  
E. HUDSON  
L. IVEY  
J. C. JARRARD  
R. JOYNER

M. JONES  
R. JONES  
E. KELLAR  
S. A. KING  
J. KING  
J. KINKEAD  
J. MCCOY  
J. MALEY  
R. MATHIS  
J. MAUTHE  
R. MISENHEIMER

T. MITCHELL  
C. MULL  
R. NEELEY  
P. ODUM  
B. PARROTT  
R. PIRKLE  
J. PRUETT  
E. RAY  
H. RECHSTEINER  
C. ROBINSON  
J. RUSSELL

T. SANDERS  
E. SHERRER  
J. SCOTT  
J. L. SMITH  
B. SPAINHOUR  
J. STARR  
E. W. STONE  
B. TIMMONS  
E. TURNER  
A. WHALEN  
J. WHITE

# REX FRATERNITY



Rex Frat Officers



ALFORD

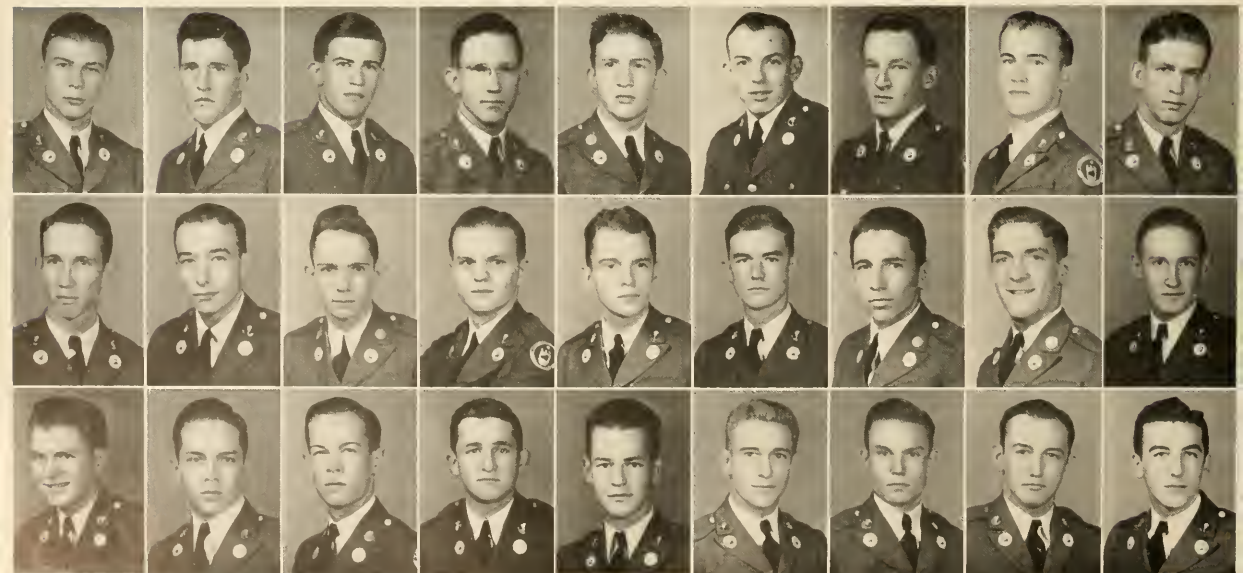
EARL ALFORD	President
BOYD McWHORTER	Vice-President
JOHN IRWIN	Secretary
EMORY DILLASHAW	Treasurer
C. J. DISMUKES	Faculty Adviser

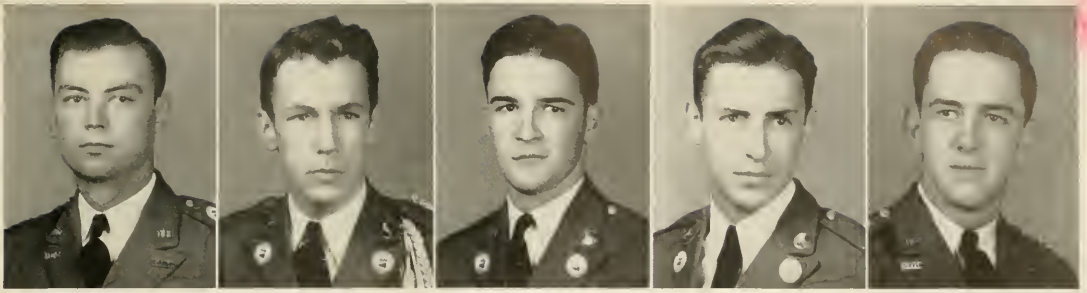


CHARLES LYLE

JOHN MAUTHE

First row, left to right: Accordini, Alday, Allen, Andrews, F., Andrews, P., Bateman, Barron, Barton, Bridges, Calhoun, Carter, Chick, Crowley, Davis, Dixon, East, Farkas. . . . Second row: Hartley, Hatcher, Henderson, Her- ring, Horne, House, Hutcherson, Ivie, Kellar, Kelley, King, Kinsman, Ledford, McGarity, Maxwell, Miller, Mills. . . . Third row: Mingleldorf, Northcutt, Pittman, Pruett, Pryor, Reed, Sims, Teasley, Turner, Wall, Weatherly, West, Worrell, E., Worrell, R., Williams, Yarbrough.





DILLASHAW

IRWIN

LYLE

MAUTHE

McWHORTER

PLEDGES

L. ACCORDINI  
 G. ALDAY  
 H. ALLEN  
 F. ANDREWS  
 P. ANDREWS  
 R. BATEMAN  
 A. BARRON  
 D. BARTON  
 M. BRIDGES  
 D. CALHOUN

J. CARTER  
 H. CHICK  
 E. CROWLEY  
 P. DAVIS  
 W. DIXON  
 T. EAST  
 P. FARKAS  
 J. HARTLEY  
 M. HATCHER  
 J. HENDERSON

J. HERRING  
 T. HORNE  
 O. HOUSE  
 H. HUTCHERSON  
 V. IVIE  
 E. KELLAR  
 S. KELLEY  
 C. KING  
 W. KINSMAN  
 B. LEDFORD

S. McGARITY  
 B. MAXWELL  
 J. MILLER  
 H. MILLS  
 F. MINGLEDORFF  
 J. NORTHCUTT  
 W. PITTMAN  
 J. PRUETT  
 J. PRYOR  
 J. REED

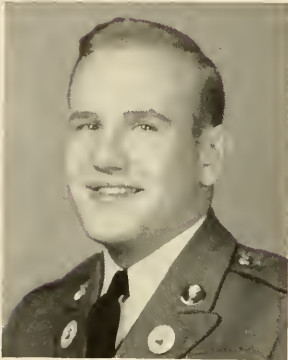
E. SIMS  
 L. TEASLEY  
 R. TURNER  
 L. WALL  
 G. WEATHERLY  
 J. WEST  
 E. WORRELL  
 R. WORRELL  
 M. WILLIAMS  
 L. YARBROUGH



# SIGMA THETA FRATERNITY



Sigma Theta Officers at a Fireside Chat.



MILLER

## OFFICERS

HOWARD MILLER	President
CHARLIE OUZTS	Vice-President
NIMROD PRESTON	Vice-President
JIMMY WHITFIELD	Treasurer
W. D. BOOTH	Faculty Adviser



S. ALBEA  
R. ANDREWS  
C. ARMSTRONG  
J. BARROWS  
R. BENNETT  
H. BOWERS  
C. DUNCAN  
F. DURDEN  
R. ELLIOTT  
R. EVANS  
W. FORSYTH  
R. GRANT  
C. HEATH  
P. HENDERSON  
P. HICKS

R. HOOTEN  
B. HUDSON  
R. HUMPHREY  
R. HUNT  
E. JOHNS  
M. KITCHENS  
J. LONGINO  
C. MATTHEWS  
D. McMANUS  
F. MOORMAN  
J. PERDUE  
R. PERRY  
L. REED  
H. RIDDLE

M. RICE  
H. SANDERS  
J. SHULER  
J. SMITH  
D. SPANGLER  
C. STEED  
G. STONE  
R. STOREY  
T. TRIMBLE  
C. TRUSSEL  
W. VANN  
W. WALKER  
J. WALLIS  
J. WILLIAMS  
I. WOOD





**MEMBERS**

- A. ANDREWS
- T. BARKSDALE
- C. BLANCHARD
- J. HICKS
- R. JONES
- J. KING
- S. MAGARGEE
- J. MANDEVILLE
- C. OUZTS
- N. PRESTON
- J. SMITH
- J. WHITFIELD



ANDREWS  
JONES  
OUZTS

BARKSDALE  
KING  
PRESTON

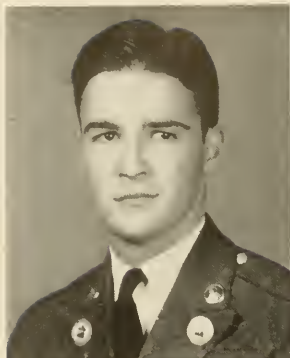
BLANCHARD  
MAGARGEE  
SMITH

HICKS  
MANDEVILLE  
WHITFIELD



First row: left to right: Al-  
bea, Andrews, Armstrong,  
Barrows, Bennett, Bowers,  
Duncan, Durden, Elliott,  
Evans, Forsyth, Grant,  
Heath, Henderson, Hicks.  
... Second row: Hooten,  
Hudson, Humphrey, Hunt,  
Johns, Kitchens, Longino,  
Matthews, McLendon, Mc-  
Manus, Moorman, Perdue,  
Perry, Reed, Riddle. . .  
Third row: Rice, Sanders,  
Shuler, Smith, Spangler,  
Steed, Stone, Storey, Trim-  
ble, Trussel, Vann, Walker,  
Wallis, Williams, Wood.

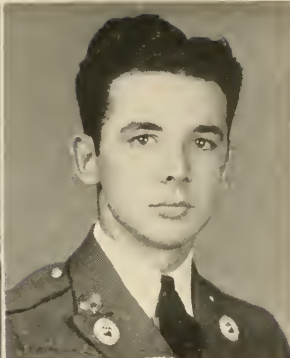




LYLE



MANDEVILLE



JONES

# PAN-HELLENIC COUNCIL

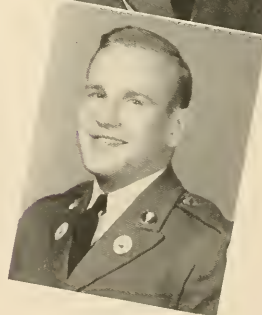
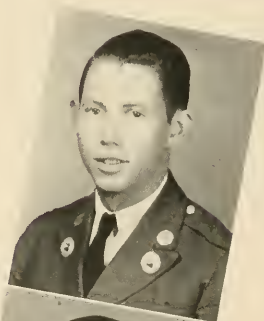
## OFFICERS

- CHARLIE LYLE . . . . . President
- JAMES MANDEVILLE . . . . . Vice-President
- RALPH JONES . . . . . Secretary and Treasurer

The PAN-HELLENIC COUNCIL was organized in 1940. Since that time it has been an outstanding social organization on the campus. The council is composed of six members, three from each fraternity. As its major activity the council sponsors two dances each year—the annual Valentine Ball and the Home-coming Dance at the end of school.

## MEMBERS

- EARL ALFORD
- BOYD McWHORTER
- HOWARD MILLER



ALFORD  
McWHORTER  
MILLER

The Council Meets.





First row, left to right: Avery, Bass, Beasley, Blanchard, Brackett, Crowley, Dillashaw, Etheridge, Forbes. . . . Second row: Gleaton, Greene, Grimes, Henderson, Hooper, Kennemur, Key, Lyle, McKay. . . . Third row: Mandeville, Mercer, H. Miller, J. Miller, Murrah, Myron, Oesterreicher, Ouzts, Owens. . . . Fourth row: G. Patterson, W. Patterson, Preston, Rechsteiner, Roquemore, Thomas, Williams, Worsham.

## OFFICERS

ROBERT A. DAVIS  
President

BOYD H. McWHORTER  
Vice-President

J. W. STARR  
Secretary

LEE DAVIDSON  
Treasurer



# OFFICERS CLUB

DAVIS



The OFFICER'S CLUB was established to encourage leadership and proficiency in the various branches of military. In the years that the club has been on the campus it has done much to raise the standards of the officers.

Each year the Officer's Club sponsors several dances through the school term. During the Homecoming Dances they sponsor the Military Ball at which every officer kisses his girl in the beautiful ring ceremony.

## MEMBERS

H. AVERY  
P. BASS  
G. BEASLEY  
C. BLANCHARD  
W. BRACKETT  
E. CROWLEY  
E. DILLASHAW  
E. ETHERIDGE  
G. FORBES

S. GLEATON  
G. GREENE  
B. GRIMES  
F. HENDERSON  
G. HOOPER  
J. KENNEMUR  
H. KEY  
C. LYLE  
J. McKAY

J. MANDEVILLE  
D. MERCER  
H. MILLER  
J. MILLER  
M. MURRAH  
H. MYRON  
D. OESTERREICHER  
C. OUZTS  
J. OWENS

G. PATTERSON  
W. PATTERSON  
N. PRESTON  
R. RECHSTEINER  
B. ROQUEMORE  
F. THOMAS  
C. WILLIAMS  
T. WORSHAM

McWHORTER  
STARR  
DAVIDSON



# D

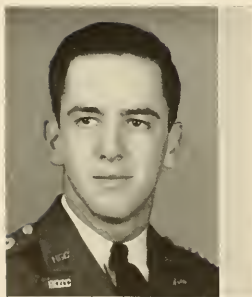
"D"  
CLUB

### OFFICERS

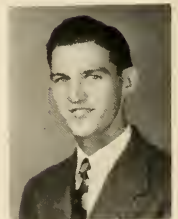
- BOYD McWHORTER . . . . . President  
 EMORY DILLASHAW . . . . . Vice-President  
 ERNEST CROWLEY . . . . . Secretary  
 W. A. ADAMS . . . . . Treasurer  
 J. B. SCEARCE, D. V. JONES . . . Faculty Advisers

### MEMBERS

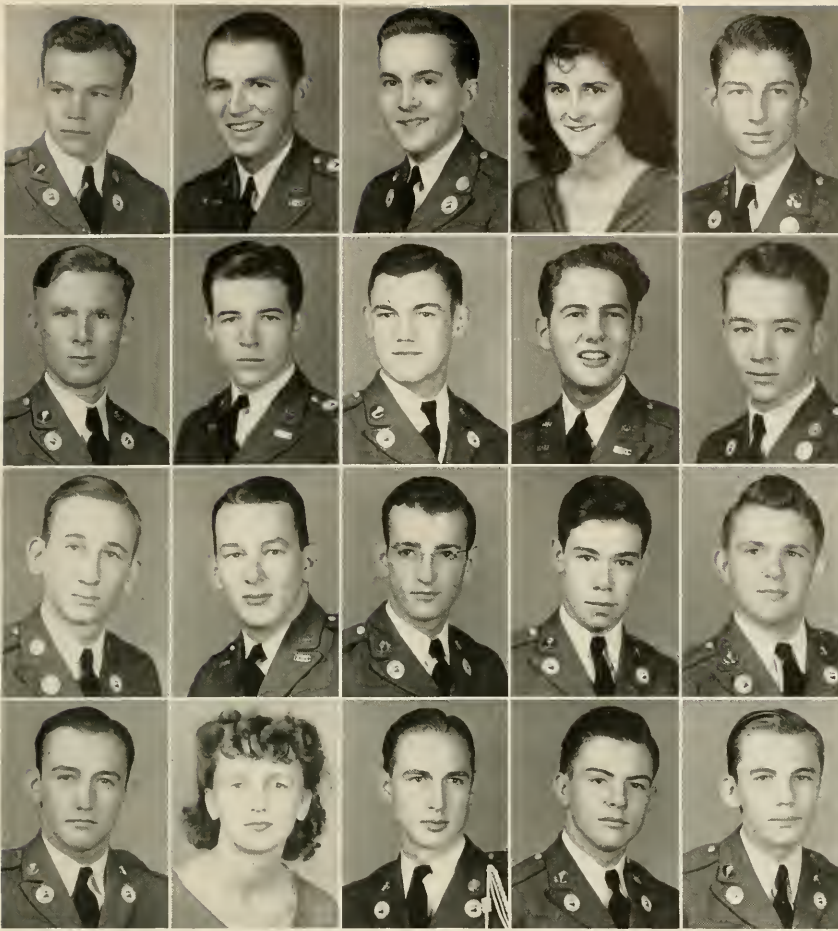
- |                |                 |
|----------------|-----------------|
| STEVE ABSTON   | JACK KENNEMUR   |
| JIMMY ADAMS    | HAROLD MYRON    |
| RUSSELL BOLING | ROY RECHSTEINER |
| BEN GRIMES     | J. W. STARR     |
| GARNER HOOPER  | FRANK THOMAS    |
| RALPH JONES    | CLAUDE WILLIAMS |



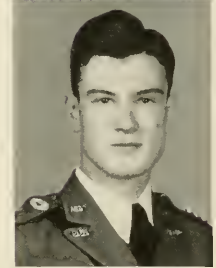
McWHORTER  
 DILLASHAW  
 CROWLEY  
 ADAMS



JONES  
 SCEARCE



First row, left to right: Andrews, Avery, Banks, Brown, Durden. . . . Second row: Etheridge, Gleaton, Jarrard, McKay, Mingledorff. . . . Third row: Murphy, Owens, Roberts, Sheehan, Studdard. . . . Fourth row: Teasley, Trapp, Trimble, Upshaw, Wallis.



WOFFORD  
JOYNER  
OUZTS

# SCIENCE CLUB

- |                          |                         |
|--------------------------|-------------------------|
| JOHN IRWIN . . . . .     | President               |
| C. V. OUZTS . . . . .    | Vice- President         |
| ROY JOYNER . . . . .     | Secretary and Treasurer |
| DORIS WOFFORD . . . . .  | Parliamentarian         |
| H. B. FORESTER . . . . . | Faculty Adviser         |

## MEMBERS

- |                  |                    |                 |                |
|------------------|--------------------|-----------------|----------------|
| AGNEW ANDREWS    | EDWIN ETHERIDGE    | TOM MURPHY      | LUCIUS TEASLEY |
| HERBERT AVERY    | STEVE GLEATON      | JOHN OWENS      | GEORGIA TRAPP  |
| WALTER BANKS     | J. C. JARRARD      | EDWIN ROBERTS   | RAMSEY TRIMBLE |
| BETTY JEAN BROWN | JACK MCKAY         | JOHN SHEEHAN    | JIM UPSHAW     |
| FAUST DURDEN     | ERNEST MINGLEDORFF | WESLEY STUDDARD | JAMES WALLIS   |



IRWIN

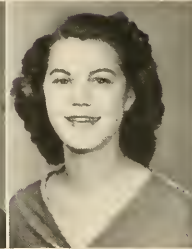
# HOME ECONOMICS CLUB



RAY



JONES



COLLINS



ELLIOTT

## OFFICERS

LLENELL JONES . . . . . President  
 FRANCES ELLIOTT . . . . . Vice-President  
 LOUISE COLLINS . . . . . Secretary and Treasurer  
 MISS VERNELLE RAY . . . . . Faculty Adviser

## MEMBERS

VONIS ABERNATHY  
 MIRIAM ALLEN  
 MILDRED AMOS  
 ESTELLE ANDERSON  
 MADELYN ANTHONY  
 EUCLIDE ARCHER  
 RITA BARTON  
 BETTY JEAN BROWN  
 ALICE BUSH  
 MARY BARBARA CASON  
 MARTHA CHAPMAN  
 LOUISE COLLINS

FAYE DANIEL  
 ELIZABETH DENARD  
 BETTY EDMONDSON  
 FRANCES ELLIOTT  
 EVELYN FLEMING  
 MARY LOU FORRESTER  
 GENELLE GAZAWAY  
 HELEN GRIZZLE  
 FRANCES IRWIN  
 FLORENCE JACKSON  
 LLENELL JONES  
 MARY KNOX

LILLIAN LANGLEY  
 HELEN MAXWELL  
 KATHLEEN MCGILL  
 MARGARET MILES  
 J. JEAN MILLER  
 P. JEAN MILLER  
 FRANCES MITCHELL  
 MARIE NIX  
 AMY RUTH PARKER  
 AUDREY PARTRIDGE  
 MAHALA REDD

HAZEL RICHARDSON  
 IRIS ROGERS  
 ELIZABETH SHANAHAN  
 JIMMIE SMITH  
 MARIE STATON  
 ANITA TANNER  
 OUIDA TAYLOR  
 MIRIAM VAUGHN  
 EDRESS WARMACK  
 NADINE WHITMIRE  
 DOROTHY WYNNE



# CLUB ACTIVITIES



Art Exhibit



PREXY JONES plants a tree



Home Ec entertains the Faculty at a Tea



Home Ec Banquet



Tea Party



Annual Christmas Party



Cleaning up after the Party



Sewing for the Red Cross



FREEMAN  
JONES  
PRYOR  
UPSHAW

HILL  
KING  
SMITH  
WEEMS

HORNE  
NORTHCUTT  
TAPPAN  
WOOD



PEACOCK  
PATTERSON  
MATHIS

# DEBATE CLUB

## OFFICERS

- RICHARD MATHIS . . . . . President  
 GENE PATTERSON . . . . . Vice-President  
 SARA PEACOCK . . . . . Secretary

## MEMBERS

- |                  |               |                |
|------------------|---------------|----------------|
| MARGARET FREEMAN | ALLEN KING    | SARAH TAPPAN   |
| JEAN HILL        | JOE NORTHCUTT | JIM UPSHAW     |
| TOM HORNE        | JARRETT PRYOR | MARGARET WEEMS |
| MARION JONES     | JAMES SMITH   | IRWIN WOOD     |



# GIRL'S ATHLETIC COUNCIL

## OFFICERS

- MAGGIE WEEMS . . . . . President  
 JEAN MILLER . . . . . Secretary  
 ROSE MAY . . . . . Treasurer  
 MISS SARA BRUCE . . . . . Faculty Adviser



BRUCE  
MILLER

MAY  
WEEMS

## MEMBERS

- MARION AULTMAN  
 BETTY JEAN BROWN  
 VELMA CHAMBERS  
 LOUISE COLLINS  
 MARGARET FREEMAN  
 LILLIAN FULLER  
 GERTRUDE HAMPTON  
 CAROLENE JARRARD  
 LLENELL JONES
- ROSE MAY  
 JEAN MILLER  
 SARA PEACOCK  
 VALERIA RUDASILL  
 JOSEPHINE SCOTT  
 MARY SHANNON  
 EDRESS WARMACK  
 MARGARET WEEMS



The Council



SCOTT

AULTMAN

WARMACK

SHANNON

FULLER

BROWN

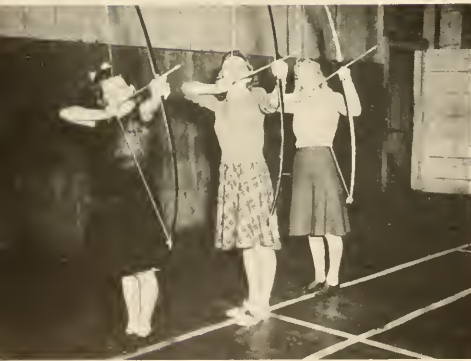
CHAMBERS

JONES

# HIPPOLYTANS



JARRARD  
Captain



MILES, VAUGHN, BROOKS

## MEMBERS

- EUCLEDE ARCHER
- MARION AULTMAN
- BETH BROOKS
- BETTY BROWN
- JOHNNIE BROOKSHIRE
- ALICE BUSH
- MARY HILDA CHAMBERS
- BETTY EDMONDSON
- EVELYN FLEMING
- HELEN GRIZZLE
- CAROLINE JARRARD
- EMORUTH KEITH
- MARY KNOX
- HELEN MAXWELL
- KATHLEEN MCGILL
- PEGGY MILES
- MARY MOORE
- AUDREY PARTRIDGE
- DOROTHY PHARR
- MARY SHANNON
- PRISS TERHUNE
- ELYCE THOMPSON
- GEORGIA TRAPP
- MIRIAM VAUGHN
- VERA WHEELER
- SARA YOUMANS

WHEELER, THOMPSON



# MERCURIANS



PEACOCK  
Captain

## MEMBERS

- MIRIAM ALLEN
- MILDRED AMOS
- CAROLYN CAREY
- MARY BARBARA CASON
- FRANCES CHAMPION
- LOUISE COLLINS
- FAYE DANIEL
- ELIZABETH DENARD
- SARAH FELLOWS
- LILLIAN FULLER
- FLORENCE JACKSON
- MAYS JOLLEY
- MARGARET KENNEDY
- HELEN McELREATH
- HOLLY McMICHAEL
- ROSE MAY
- FRANCES MITCHELL
- JAYNE MITCHELL
- MARIE NIX
- SARA PEACOCK
- IRIS ROGERS
- VALERIA RUDASILL
- CHRISTINE SOSEBEE
- ANITA TANNER
- OUIDA TAYLOR
- EDRESS WARMACK
- GENEVA WIMPY

FELLOWS, RUDASILL, COLLINS, TANNER, McELREATH



CARY, WARMACK, ROGERS, MAY



# PHI O MICRONS



HAMPTON  
Captain



## MEMBERS

- ESTELLE ANDERSON
- MADelyn ANTHONY
- VIRGINIA ASH
- LOUISE BOBO
- ROSE BRADLEY
- VELMA CHAMBERS
- BETTY COGBURN
- FRANCES ELLIOT
- NANNIE LOU FITTS
- MARY LOU FORRESTER
- MILDRED FRENCH
- GERTRUDE HAMPTON
- RUTH HICKS
- MARY HUFF
- KARLINE KILGORE
- LILLIAN LANGLEY
- AMY RUTH PARKER
- MAHALA REDD
- HAZEL RICHARDSON
- ELIZABETH SHANAHAN
- JIMMIE SMITH



RICHARDSON, BRADLEY, SMITH, ANTHONY



CHAMBERS



# TRAHLYTANS



FREEMAN  
Captain



## MEMBERS

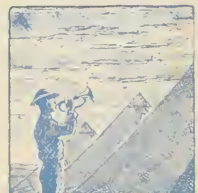
VONIS ABERNATHY  
 ODOLLA BRAY  
 B. J. BROWN  
 ELEANOR CAMPBELL  
 MARTHA CHAPMAN  
 SHIRLEY CUTHBERTSON  
 SUE CUTTS  
 LILLOUISE ELLIOTT  
 MARGARET FREEMAN  
 GENELLE GAZAWAY  
 JEAN HILL  
 SUE HUGHES  
 COLLEEN HUGHES  
 FRANCES IRWIN  
 LLENELL JONES  
 KATHERINE KNOWLES  
 ANN McLANEY  
 MARTHA McLENDON  
 FRANCES PADGETT  
 CAROLYN PLEXICO  
 JOSEPHINE SCOTT  
 MARIE STATON  
 SARA TAPPAN  
 DORIS WOFFORD  
 DOROTHY WYNNE



McLENDON, SCOTT, BROWN, WOFFORD



SCOTT

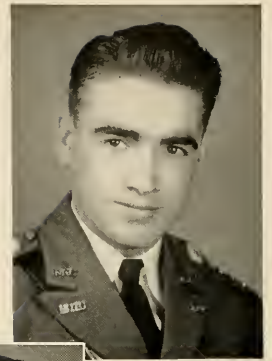




DAVIS  
McWHORTER  
PATTERSON

JONES  
OESTERREICHER  
SMITH

JOYNER  
OUZTS  
THOMAS



STARR



MERCER



JONES

# Y. M. C. A.



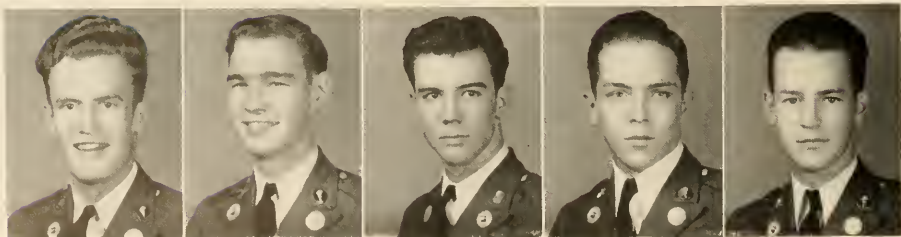
## OFFICERS

- |                  |                         |
|------------------|-------------------------|
| J. W. STARR, JR. | President               |
| DURWARD MERCER   | Vice-President          |
| RALPH JONES      | Secretary and Treasurer |
| H. B. FORESTER   | Faculty Adviser         |

## COUNCIL MEMBERS

- |              |                      |                |
|--------------|----------------------|----------------|
| ROBERT DAVIS | BOYD McWHORTER       | GENE PATTERSON |
| MARION JONES | DONALD OESTERREICHER | JAMES L. SMITH |
| ROY JOYNER   | CHARLIE OUZTS        | FRANK THOMAS   |

## FRESHMAN "Y" COUNCIL



CARROLL ARMSTRONG

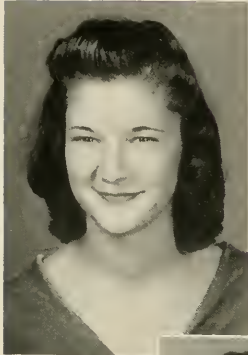
NORMAN BEVERLY

CLIFFORD KING

JOE NORTHCUTT

JARRETT PRYOR

# Y. W. C. A.



FULLER



PEACOCK



BROOKSHIRE



CORRY  
DERRY  
JONES

DANIEL  
HAMPTON  
TANNER

## OFFICERS

LILLIAN FULLER . . . . . President

SARA PEACOCK . . . . . Vice-President

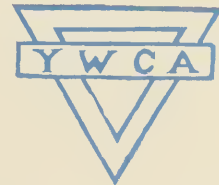
JOHNNY BROOKSHIRE . . . . . Secretary and Treasurer

## COUNCIL MEMBERS

ELISE CORRY  
MARIE DERRY

LLENELL JONES  
FAYE DANIEL

GERTRUDE HAMPTON  
ANITA TANNER





# WOMEN'S GLEE CLUB

DISMUKES

CAMILLUS J. DISMUKES, Director  
 BERT H. FLANDERS and MRS. RICHARD MAGUIRE, Accompanists



FLANDERS

## First Sopranos

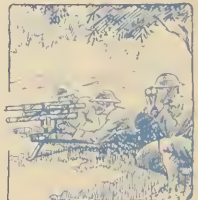
MADelyn ANTHONY  
 MARY BARBARA CASON  
 MARGARET FREEMAN  
 WYNELLE HARDY  
 COLLEEN HUGHES  
 HAZEL RICHARDSON  
 VALERIA RUDASILL  
 MIRIAM VAUGHN

## Second Sopranos

MIRIAM ALLEN  
 MATTIE LOU BARTON  
 MARIE DERRY  
 FLORENCE JACKSON  
 ELIZABETH SHANAHAN

## Altos

VIRGINIA ASH  
 VELMA CHAMBERS  
 AMY RUTH PARKER  
 IRIS ROGERS  
 MARIE STATON  
 OUIDA TAYLOR  
 MARGARET WEEMS







# MEN'S GLEE CLUB

BOOTH



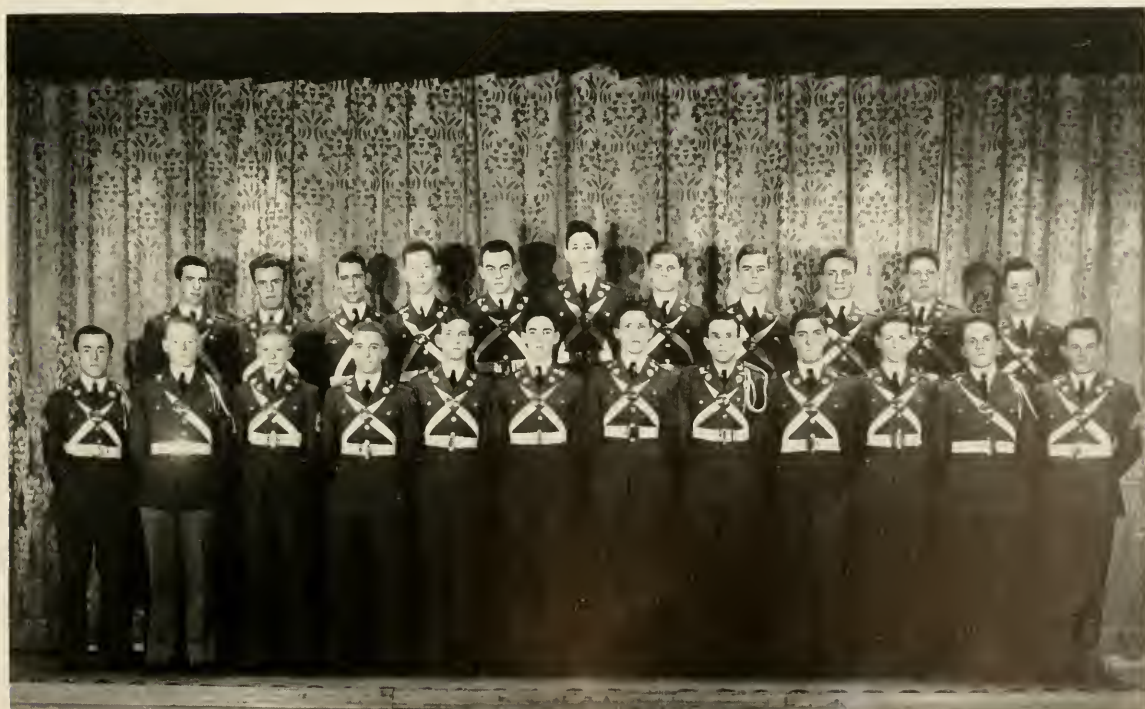
W. DESMOND BOOTH . . . . . Director  
CAPTAIN RICHARD S. McCONNELL . . . . . Manager  
BERT H. FLANDERS and MRS. RICHARD MAGUIRE . . . . . Accompanists

## GLEE CLUB ROSTER

- |                  |                 |                 |
|------------------|-----------------|-----------------|
| P. C. ANDREWS    | JAMES GAINEY    | HUGH MILLS      |
| C. ARMSTRONG     | BILL HARDING    | GENE PATTERSON  |
| JOHN BARROWS     | JOE HICKS       | ROY RECHSTEINER |
| MARION BRIDGES   | OWEN HOUSE      | JACK REED       |
| DOUGLAS BUCKALEW | CLAYTON HUCKABY | BLAKE STILES    |
| WILL BURCH       | EUGENE JOHNS    | BOB TIMMONS     |
| J. E. CARTER     | ROY JOYNER      | EARL WILLIAMS   |
| RICHARD CARTER   | WALKER KINSMAN  | MARION WILLIAMS |
| HOPSON DORRIS    | ECHOLS MAYO     | IRWIN WOOD      |
| GUY FITTS        | JOE MAYS        |                 |

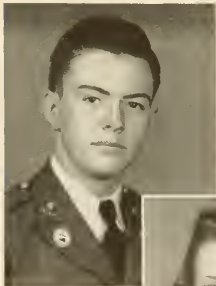


McCONNELL





First row, left to right: Allen, Armstrong, Aultman, Brown, Carey, Cason. . . . Second row: L. Collins, P. Collins, Cuthbertson, Herring, Huckaby, Johns. . . . Third row: Kellar, King, McKinnon, Mangum, May, Pryor. . . . Fourth row: Tappan, Weems, I. Wood, J. Wood, Wofford.



UPSHAW



McELREATH



WHEELER

OFFICERS

- JIM UPSHAW . . . . . President
- HELEN McELREATH . . . . . Vice-President
- VERA WHEELER . . . . . Secretary
- ANDREW SPARKS . . . . . Faculty Director

DRAMATIC CLUB



MEMBERS

- MIRIAM ALLEN
- CARROLL ARMSTRONG
- MARION AULTMAN
- BETTY BROWN
- CAROLINE CAREY
- MARY BARBARA CASON

- LOUISE COLLINS
- PRESTON COLLINS
- SHIRLEY CUTHBERTSON
- JOHN HERRING
- CLAYTON HUCKABY
- CHARLES JOHNS

- ERNEST KELLAR
- ALLEN KING
- ROBERT McKINNON
- HOLLAND MANGUM
- ROSE MAY
- JARRETT PRYOR

- SARAH TAPPAN
- MARGARET WEEMS
- IRWIN WOOD
- JAMES WOOD
- DORIS WOFFORD



# THE GENERALS

## MEMBERS

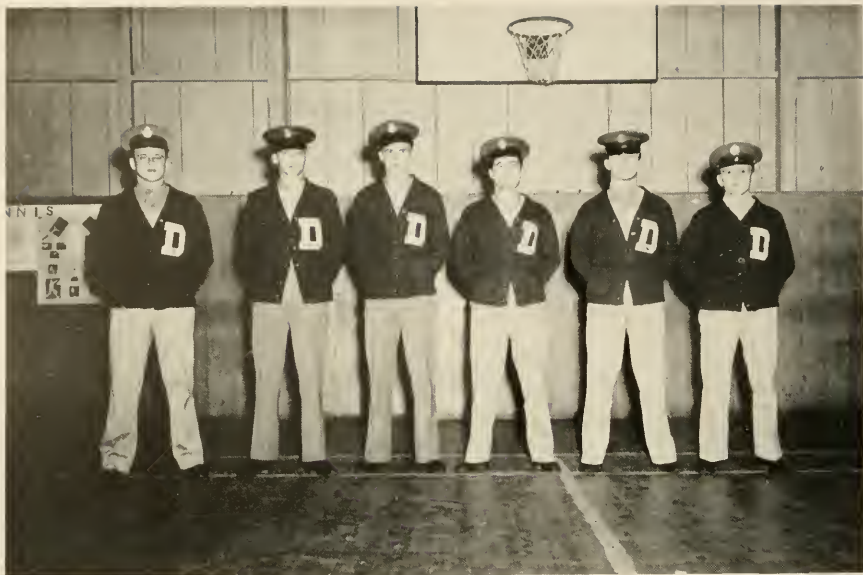
Drums	Bass	Trumpets	Saxophones	Trombones	Piano
CHARLES MOORE	ROY RECHSTEINER	JACK SHULER JOE HICKS	DONALD OESTERREICHER JAMES SHEPPHERD ROBERT BENNETT BILL PATTERSON	STEWART McGARITY BILL McLENDON	CHARLES BATES

R. H. MAGUIRE . . . . . Faculty Adviser  
 D. L. OESTERREICHER . . . . . Student Director

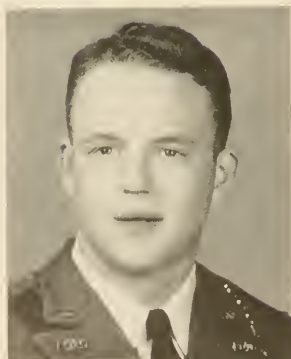


MAGUIRE





## BOY'S ATHLETIC COUNCIL



THOMAS

FRANK THOMAS . . . . . Council Head  
 J. B. SCEARCE . . . . . Faculty Adviser  
 D. V. JONES . . . . . Faculty Adviser

### MEMBERS

ERNEST CROWLEY  
 BEN GRIMES  
 JACK KENNEMUR  
 HAROLD MYRON  
 ROY RECHSTEINER

*Sponsoring . . .*



NORTH GEORGIA COLLEGE CO-EDS, LEFT TO RIGHT: WHEELER, FULLER, MITCHELL, FLEMING,  
MAY, AND IRWIN.

# THE FEATURES



*Miss Frances Sewin*

Albany, Georgia

SPONSOR OF THE CYCLOPS



*Miss Faye Daniel*

Jefferson, Georgia

SPONSOR OF THE PAN-HELLENIC COUNCIL



*Mrs. John R. Irwin*

Albany, Georgia

SPONSOR OF THE SCIENCE CLUB





*Mrs. J. W. Starr*

Albany, Georgia

SPONSOR OF THE Y. M. C. A.



*Miss Martha McLendon*

Avondale Estates, Georgia

SPONSOR OF THE "D" CLUB



*Mrs. John Baxter*

Fernandina, Florida

SPONSOR OF THE OFFICER'S CLUB



*Mrs. W. C. Patterson*

Adel, Georgia

SPONSOR OF THE CADET BUGLER



*Miss France Hilliard*

Coral Gables, Florida

SPONSOR OF THE DRAMATIC CLUB



*Mrs. George W. Thomas*

Macon, Georgia

SPONSOR OF THE STUDENT BODY



*Miss Mary Laura Starr*

Albany, Georgia

SPONSOR OF THE SOPHOMORE CLASS



*Miss Frances Ausley*

Hilliard, Florida

SPONSOR OF THE FRESHMAN CLASS





*Miss Jane Lancaster*

Sylvester, Georgia

SPONSOR OF REX FRATERNITY



*Mrs. Howard Miller*

Avondale Estates, Georgia

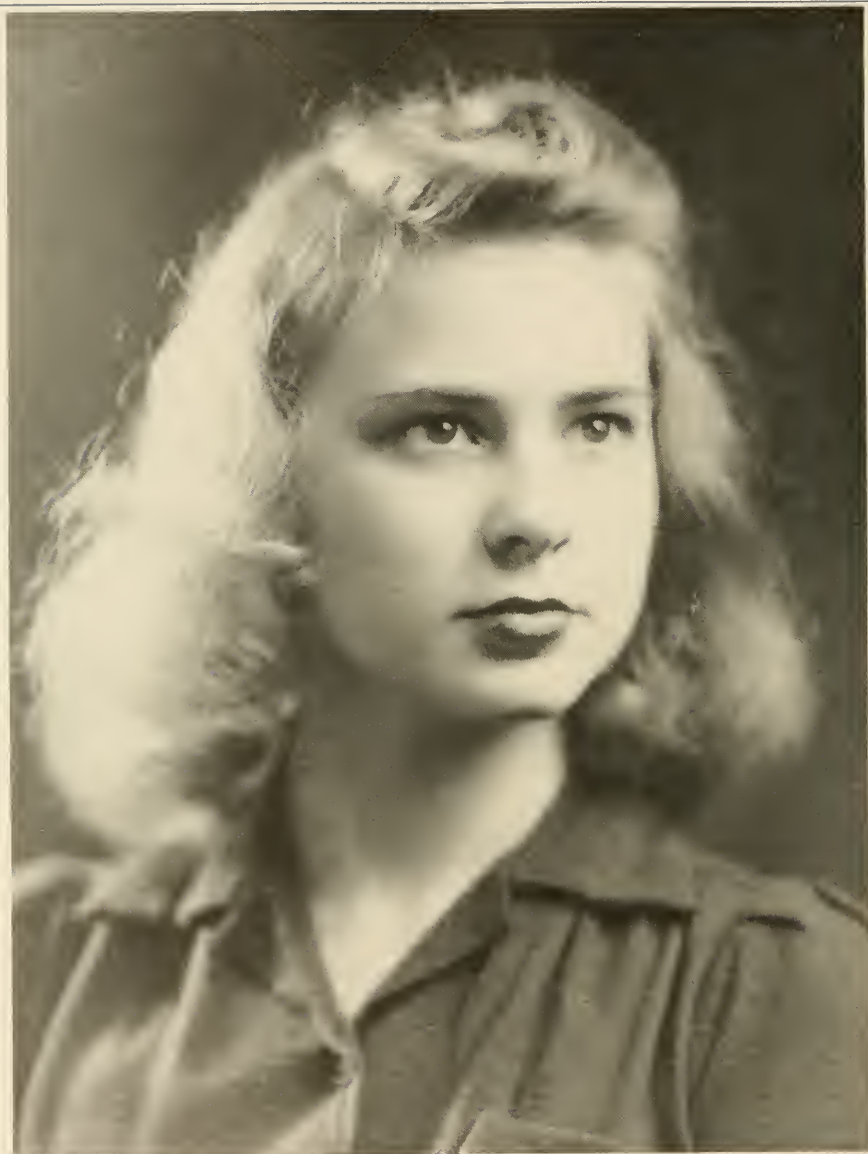
SPONSOR OF SIGMA THETA FRATERNITY



*Miss Betty Stone*

Fernandina, Florida

SPONSOR OF BATTALION



*Miss Hettie George Collins*

Marietta, Georgia

SPONSOR OF BATTALION STAFF



*Miss Mary Estes McWhorter*

Cochran, Georgia

SPONSOR OF "A" COMPANY



*Miss Robbie Tankersley*

Columbia, Tennessee

SPONSOR OF "B" COMPANY



*Miss Lillian Fuller*

Calhoun, Georgia

SPONSOR OF "C" COMPANY



*Miss Edna Sanders*

Jeffersonville, Georgia

SPONSOR OF "D" COMPANY





*Miss Jeanne Sewell*

Atlanta, Georgia

SPONSOR OF THE BAND



*Miss Virginia Gill*

Woodbury, Georgia  
SPONSOR OF THE "GENERALS"



*Miss Holly McMichael*

Sandersville, Georgia

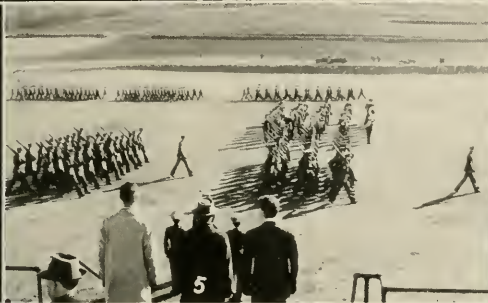
SPONSOR OF THE ATHLETIC COUNCIL



*Miss Frances Mitchell*

Crawfordville, Georgia

MISS NORTH GEORGIA COLLEGE



1. At the Co-ed Cottage. . . . 2. "Heil."  
. . . 3. "Dreaming." . . . 4. Mrs. Holloway. . . . 5. Passing in Review. . . .  
6. "Yum! Yum!" . . . 7. "Listening at Jive." . . . 8. Capt. McConnell swings out.  
. . . 9. "Twinkle" and "Granite." . . .  
10. Home Ec Girls. . . . 11. Cain Creek Falls. . . . 12. "Lead out."





LEE DAVIDSON  
Most Dignified  
Most Executive  
Neatest Cadet



JEFF McCONNELL  
Friendliest Cadet



LOUISE COLLINS  
Friendliest  
Best Dancer

# WHO'S



CHARLIE OUZTS  
Most Polite Cadet



CHARLIE LYLE  
Most Handsome Cadet



IRIS ROGERS  
Most Polite Co-ed



FRANCES MITCHELL  
Prettiest Co-ed



EMORUTH KEITH  
Most Dignified Co-ed



KENNETH STEPHENS  
Wittiest Cadet



MAYS JOLLEY  
Most Popular Co-ed



J. W. STARR  
Most Popular  
Best All-round Cadet

# WHO



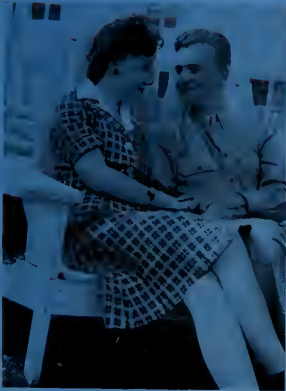
MAGGIE WEEMS  
Best All-round Co-ed



EMORY DILLASHAW  
Most Athletic Cadet



JO SCOTT  
Most Athletic Co-ed



HARDY and CARTER  
Most in Love



FRANK THOMAS  
Biggest Bullshooter    Biggest Bolsheviki



COL. BOB DAVIS  
Most Military Soph



LEWIS YARBROUGH  
Most Military Frosh



BILL LIPSCOMB  
Best Dancer



MARIE NIX  
Cutest Co-ed



BUTCH BROWN  
Wittiest Co-ed



DR. FORRESTER  
Most Popular Faculty Member

*FRIENDLY BUSINESS . . .*

As the years roll by and you look back on these days in college as the "happiest days" of your life, days when the warmest friendships were made, when you laughed and loved, and lived, free from care and worry, when the weather didn't bother you and the stock market couldn't faze you, think back upon these gay hours spent in *Smith's*. It was here friends met and discussed campus matters; it was here you invariably took your date and discussed things other than politics, as you paused to refresh yourself with a dish of Southern Dairies Ice Cream, a cup of coffee and a toasted sandwich, etc., or whiled away an hour at billiards.

Yes, happy days those were — and their memory is made all the sweeter by those eternal tokens of friendship and love — COLLEGESEAL jewelry and stationery.

We have thoroughly enjoyed being host to the Corps of Cadets and the Co-Eds. To the graduating class, we offer our congratulations; to the first-year students we say that we will look forward with pleasure to seeing you again next year.

VERNON H. SMITH

*"Where College Students Meet"*

DAHLONEGA, GEORGIA



BIG STAR SUPER MARKET



*"Home of Better Meats"*

GAINESVILLE

GEORGIA

*Compliments of*

McLELLAN'S

5c - \$1.00 STORES

GAINESVILLE

GEORGIA

*Compliments of . . .*

PARKS FEED STORE



GAINESVILLE

GEORGIA

PIGGLY-WIGGLY

*Service - Satisfaction*

J. B. MCKIBBEN, *Mgr.*

GAINESVILLE

GEORGIA

PHOTOGRAPHS USED IN THE 1942 *CYCLOPS*

WERE MADE BY

WHITEHALL STUDIOS

ATLANTA

GEORGIA



JOHN H. MOORE & SON

*General Merchandise*



A FRIEND OF NORTH GEORGIA COLLEGE FOR YEARS



DAHLONEGA, GEORGIA

JOHN H. MOORE

ROBERT M. MOORE

SMALL-ESTES BAKERY



*Home of*

AUNT BETTY'S BREAD



GAINESVILLE, GEORGIA

STRATFORD HOSIERY  
CORPORATION

Men's, Women's and Children's

Hosiery



BURLINGTON, N. C.

*Compliments of . . .*

THE NORTH GEORGIA COLLEGE  
STUDENTS' EXCHANGE

*An Excellent Staff of Students*



Your Patronage Makes This Convenience Possible

•

MAJOR P. M. HUTCHERSON, Supervisor

JACK ROBERTS, Manager

DAHLONEGA

GEORGIA

For Outstanding  
Uniform Equipment  
**GEMSCO**

395 FOURTH AVE. NEW YORK CITY

•  
*Manufacturers of*  
Uniform Accessories Since 1881

**HORNE DESK AND FIXTURE  
COMPANY**

Phone WALnut 1463

DESKS, CHAIRS, FILES, SAFES  
47-49 Pryor St., N. E. ATLANTA, GA.

**PILGRIM-ESTES FURNITURE  
COMPANY**

*Complete Line of*  
HOME FURNISHINGS

GAINESVILLE GEORGIA

**TYLER & COMPANY**

Printers of

COLLEGE CATALOGS AND  
SCHOOL WORKBOOKS

Hapeville GEORGIA

When in Gainesville, Visit . . .

**JOHNNIE MACK'S PLACE**

•  
*Drinks - Billiards - Eats*

•  
GAINESVILLE GEORGIA

*Compliments of . . .*

**FRIERSON-McEVER CO.**

MEN'S AND BOYS' WEAR

GAINESVILLE GEORGIA

**MAYFLOWER CAFE**

A Friend of N. G. C.  
Cadets and Co-Eds

•  
GAINESVILLE GEORGIA

*Compliments of*

**NORTHEAST GEORGIA CIGAR  
& CANDY CO.**

ATHENS GEORGIA

"AND EVEN  
THOUGH ITS  
SNOWING"



## "In Training" for 118 Years

to do the important job of outfitting Officers of the United States Navy . . . and Officers in every other branch of the U. S. Service, with good UNIFORMS, and correct CIVILIAN APPAREL continuously for 118 years (since 1824). We've got to be RIGHT . . . to have enjoyed this privilege for so long a time.

Students of NORTH GEORGIA COLLEGE who wear uniforms by JACOB REED'S SONS, Philadelphia, are assured of choice materials, skilled tailoring and satisfactory service that only 118 years of maintaining uniform quality can provide.

### JACOB REED'S SONS

*Outfitters of Officers of the United States Navy for More Than a Century*

55 Maryland Ave., Annapolis, Md.      1424-1426 Chestnut St., Philadelphia, Pa.

### HOLLY THEATRE

We are proud to serve the students  
of North Georgia College

*The Home of Better Pictures*

DAHLONEGA

GEORGIA

### H. R. WOODY

Serving the N. G. C. Students  
for Fifteen Years

*On the Square*

DAHLONEGA

GEORGIA

*Compliments of . . .*

### JOHNNY MOORE SERVICE STATION

DAHLONEGA

GEORGIA



1. "He's Down."
2. "Dinky."
3. "Backboard Aces."
4. Home Run.
5. Annual Boxing Tournament.
6. Last minute instructions.
7. Xmas Play.
8. "Mae" and "Chubby."
9. "The Messiah."
10. Big Fire of Dahlonega.
11. Tea Dance at Sanford Hall.
12. The Faculty Chaperones.

Ask for "MOORE" Ice Cream  
**GEO. MOORE ICE CREAM COMPANY, INC.**  
*Manufacturers of the ice cream with guarded quality*

ATLANTA

GEORGIA

**RHODES-WOOD FURNITURE  
 COMPANY**

*Everything for the Home*

GAINESVILLE

GEORGIA

*Best Wishes From . . .*

**PIEDMONT DRUG COMPANY**

GAINESVILLE

GEORGIA

*Reasonable  
Rates*



*Efficient  
Service*

**DAHLONEGA-ATLANTA BUS LINES, INC.**

FRED JONES, General Manager

DAHLONEGA

GEORGIA

**THE GAINESVILLE FLORIST**

*"Home of Fine Flowers"*

*"Flowers for Every Occasion"*

111 S. Sycamore Street

GAINESVILLE

GEORGIA

*Compliments of . . .*

**GEO. W. MOORE & SON**

•

DEALERS IN COAL

GAINESVILLE

GEORGIA

**DAVIS-WASHINGTON CO.**

•

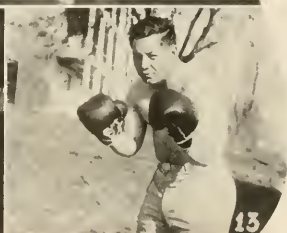
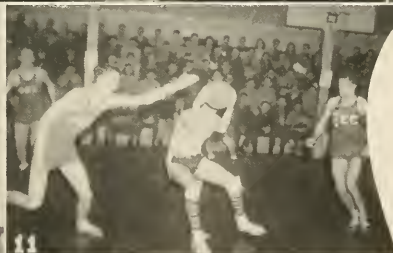
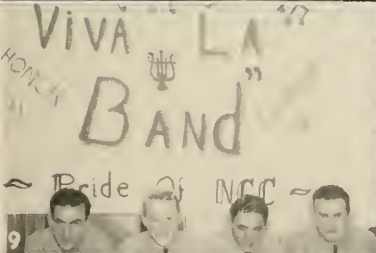
BUILDING  
MATERIALS

•

GAINESVILLE

GEORGIA





1. Colonel Davis shows them how. . . .  
2. Military Class. . . . 3. "Hi! Neighbor."  
. . . . 4. Pan-Hel members and dates. . . .  
5. "Jitterbugs." . . . 6. "Oscar." . . .  
7. N. G. C. Co-Eds. . . . 8. Dr. Rogers.  
. . . . 9. "Long live the Band." . . . 10.  
"Grab me one." . . . 11. "Let's have a  
goal." 12. "Jungleers Jive." . . . 13. "Put  
up your Dukes."

THE BEST DRESSED MEN WEAR



ALBANY

COLUMBUS

ATHENS

LAGRANGE

ATLANTA

MACON

SAVANNAH

SMITH BROTHERS

GAINESVILLE

for

*Steaks*

*Fountain Service*

*Curb Service*

*Candies . .*

Students' Headquarters

*Compliments of . . .*

GALLANT-BELK CO.

GAINESVILLE

GEORGIA

LIPSCOMB DRUG COMPANY

PHONE 42

*Nunnally's Candies*

*School Supplies*

*Prescriptions*

DAHLONEGA

GEORGIA

CITY SHOE SHOP

W. A. HOUSLEY, *Proprietor*

*On the Square*

DAHLONEGA

GEORGIA

Your Patronage  
Will Be Appreciated

SMITH HOUSE

H. B. SMITH, Prop.

DAHLONEGA

GEORGIA

DAHLONEGA RECREATION CENTER

BOB EDWARDS, Proprietor

•

*Bowling*

*Billiards*

*Cold Drinks*

•

The recreation "HUB" of North Georgia College

DAHLONEGA

GEORGIA

*Courtesy - Service*

*Efficiency*

THE BANK OF DAHLONEGA

•

*"I Bank You Can Bank On"*

•

Member of F. D. I. C.

DAHLONEGA

GEORGIA

ROSE'S 5, 10, 25c STORES

118 Stores in Five  
Southern States

GAINESVILLE

GEORGIA

*Eat at . . .*

THE COLLEGE INN

*"Home of Better Foods"*

BOB EDWARDS, Prop.

GAINESVILLE

GEORGIA

# WE ARE AT WAR!

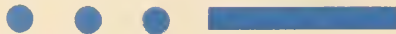
For the second time in twenty-five years the youth of America has answered the ringing call to the colors. North Georgia College is proud of her sons actively engaged in the destruction of totalitarian greed and ruthlessness which is striving to rule the world today. This page is dedicated to all former students serving in the armed forces. The necessarily incomplete list here is symbolical of them all.

NORTH GEORGIA COLLEGE SALUTES HER SONS  
AMONG THE DEFENDERS OF THE NATION!

JACK ADAMS  
O. L. AMSLEY  
CAROL A. ANDREWS  
ALLEN ANDERSON  
HUGHES L. ASH  
JIMMY ADAMS  
FRANK S. BARKER  
BILLY BOWERS  
W. H. BRIDGES  
D. BERNARD  
ELSWORTH K. BROGDON  
EDGAR BARRETT  
ED BARREH  
J. D. BOOTH  
CURTISS H. COLLIER  
CARL G. CHAPMAN  
ARCHIE LEE COCHRAN  
PRICE COCHRAN  
GENE W. CRAWFORD  
JAMES CLARK  
EARNEST CONNOR  
FRANK CHAPMAN, JR.  
J. O. COLLIER  
IVAN COLLINS  
MARK CLARK  
VERNON CARTER  
BUDDIE DICKERSON  
W. F. DANIEL  
SHERMAN DIXON  
ROSS L. EDWARDS  
W. S. EVANS  
HORACE FUNDERBURK  
FRANK GAYNER  
ARNOLD GRIFFIN  
HUGH I. GILLHAM  
FRANK GHEESLING  
H. C. GODFREY  
RALPH GRIFFITH  
GEORGE H. GAINES  
BILLY HIGHSMITH  
ERNEST HOLDT  
HOMER HEAD  
A. HOLCOMB  
W. C. HICHSON  
R. PRESTON HATCHER  
ROBERT I. HICKS  
GEORGE HAMES  
O. K. HALEY  
PAUL M. HUTCHERSON  
JOHN J. IRBY  
JACK IRBY  
JOE JOHNSON  
JOHN F. JONES  
WILLIAM E. KENNEDY  
F. M. KENNIMORE  
W. WALTER KEITH  
TED KENNEDY  
HAMILTON KIMSEY, JR.

IN MEMORIAN  
QUINTON PERKINS

JERRE W. LOWE  
BILL LOWE  
WM. T. LIPSCOMB  
JOHN D. LUKE, JR.  
H. G. LAY  
S. D. MANDEVILLE  
JOHN D. McMANUS  
W. J. McKEE  
LEAMOND B. McKEE  
SMITH J. McCURRY  
WM. P. J. McGUIVE  
HAROLD McEVER  
RICHARD S. McCONNELL  
HUGH McWHORTER  
JOHN MANLY  
BRUCE MERRITT  
FELTON MOORE  
JOE MOORE  
P. A. MURRAY  
RUEBEN E. MUNDY  
E. W. MILLS  
E. K. MAXWELL  
WINFIELD MEADOWS  
EDWARD NICHOLS  
BEN NUCKOLLS  
HUGH NORTH  
G. BRUCE PALMER  
JONNIE PECK  
REX PRUITT  
GARLAND PEYTON  
BOB PITTMAN  
EDWARD PORTER  
A. PROGDON  
A. R. QUILLIAN  
DAVID REED  
ELGIN RITTENBERRY  
F. M. RICK  
CARL RECHSTEINER  
EDITH ROBBINS  
JAMES L. SANDERS  
HOWARD SANDERS  
H. CLARK STALNAKER  
ROOKS SMITH  
M. G. SMITH  
J. C. TILLSON  
J. C. TANKSLEY  
GLENN THACKER  
H. C. THOMPSON  
W. T. TOWNSEND  
STANLEY ULMAN  
JOHN WILLIAMS  
A. H. WILSON  
E. L. WATTS  
T. L. WALKER  
W. L. WEST, JR.  
T. K. WILSON  
GEORGE E. ZEIGLER  
WM. JESSE YORK







## SUCCESSFUL ANNUALS

Require the services of experienced and expert craftsmen, trained in every detail of the processes of creating · planning layout and design · typesetting · printing lithographing and binding ... Throughout half a century this company has pioneered in the production of the highest type of printing ... Our services include a special college annual sales and service organization ... Abundant equipment · modern and complete ... Prices representing maximum in value



**FOOTE & DAVIES**

PRINTING · LITHOGRAPHING · ENGRAVING

ATLANTA







Spring 1915  
North Georgia College,  
Cyclops / 13896



