

Journal of Spices and Aromatic Crops  
Vol. 18 (1) : 13–18 (2009)

  
Indian Society for Spices

## Integrated strategy to control wilt disease of cumin (*Cuminum cyminum* L.) caused by *Fusarium oxysporum* f. sp. *cumini* (Schlecht) Prasad & Patel

Deepak<sup>1</sup> & G Lal<sup>2</sup>

Department of Botany  
University of Rajasthan  
Jaipur-302 004, Rajasthan, India  
E-mail: [deepak\\_bijarniya@rediffmail.com](mailto:deepak_bijarniya@rediffmail.com)

Received 12 June 2008; Revised 2 December 2008; Accepted 20 April 2009

### Abstract

Various fungicides, oilcakes and fertilizers were evaluated at Jaipur (Rajasthan) for the management of cumin (*Cuminum cyminum*) wilt caused by *Fusarium oxysporum* f. sp. *cumini*. Trimethyl thiuram disulphide (0.1 g g<sup>-1</sup> seeds) was the best fungicide which was on par with propiconazole, carbendazim and copper oxychloride (0.1 g g<sup>-1</sup> seeds) for the control of wilt. The disease incidence was minimum under the soil treatment with neem cake (30 q ha<sup>-1</sup>) which was on par with sesamum cake (25 q ha<sup>-1</sup>). Among the chemical and non-chemical manures, application of NPK @ 40 kg ha<sup>-1</sup> was most suitable to control the disease which was on par with *Azotobacter* @ 40 kg ha<sup>-1</sup>. The disease incidence was also significantly lower in plants grown in solarized soil. The yield was significantly higher in all treatments as compared to control. The highest cost : benefit ratio was obtained (1:40) in thiophanate methyl treatment followed by carbendazim. Among the combined treatments, minimum disease incidence was recorded with solarized soil + sesamum cake @ 25 q ha<sup>-1</sup> + seed treatment with carbendazim @ 0.1 g g<sup>-1</sup> seeds followed by solarized soil + sesamum cake @ 25 q ha<sup>-1</sup> + *Azotobacter* @ 40 q ha<sup>-1</sup>. However, the highest cost : benefit ratio (1:10.6) was obtained with solarized soil + sesamum cake @ 25 q ha<sup>-1</sup> + *Azotobacter* (biofertilizer) @ 40 kg ha<sup>-1</sup>. The integrated treatments recorded the highest grain yield and low disease incidence over control as compared to individual application.

**Keywords:** cumin, *Cuminum cyminum*, *Fusarium oxysporum* f. sp. *cumini*, wilt management.

### Introduction

Cumin wilt caused by *Fusarium oxysporum* f. sp. *cumini* L. results in yield losses up to 35% in cumin (*Cuminum cyminum* L.) in some districts of Rajasthan (Vyas & Mathur 2002). Seed treatment and soil application of

chemicals is the conventional practice adopted for controlling cumin wilt. Soil application of neem, cotton, castor and mustard cakes in combination with seed treatment with chemicals are also adopted for the control of cumin wilt. Since the pathogen *F. oxysporum*

<sup>1</sup>Present address: P C Unit, A R S-Mandor, Jodhpur-342 304, Rajasthan, India.

<sup>2</sup>Present address: CAZRI, Regional Research Station, Pali-306 401, Rajasthan, India.

f. sp. *cumini* is seed as well as soil borne in nature, an integrated disease management strategy was evaluated for the control wilt of cumin.

### Materials and methods

The field trials were conducted at Department of Botany, University of Rajasthan, Jaipur (Rajasthan) during *rabi* 2004 and 2005 in a randomized block design with three replicates with variety RZ-19. The soil of the experimental field was slightly alkaline in reaction, poor in nitrogen, phosphorus and sulphur but moderate in potassium, having low moisture retention capacity. Each treatment was replicated thrice in 2 m x 3 m plots. Ten day old culture of *F. oxysporum* f. sp. *cumini* (grown on PDA medium) was transferred to sterilized sorghum seeds in 250 ml flasks and cultured for 7 days. The cultures were ground in mixer-grinder and specific quantity of inoculum was mixed with soil before sowing the seeds in the field. Sowing was done during the last week of November during each crop season. The seeds were then treated with dry fungicides (thiophanate methyl, propiconazole, trimethyl thiuram disulphide, carbendazim, copper oxychloride, mancozeb, captaf and dinitrophenyl crotonate) (0.1 g g<sup>-1</sup> seeds) by thorough mixing. A check was maintained along with the treatments. For soil solarization the ploughed, dry soil was mulched with transparent polyethylene sheet (2.5 m thickness) during summer; un-mulched soil served as control. NPK used in the experiment had a mixture of ammonium nitrate, single super phosphate and muriate of potash in 15:15:15 ratio and applied at four levels (10, 20, 30 and 40 kg ha<sup>-1</sup>). Similarly, four levels (10, 20, 30 and 40 kg ha<sup>-1</sup>) of *Azotobacter* and four levels (10, 20, 30 and 40 q ha<sup>-1</sup>) of vermicompost were applied in soil, before sowing. A plot without fertilizers served as control. The oil cakes (mustard cake, neem cake, cotton cake, sesame cake and groundnut cake) were finely powdered and thoroughly mixed with soil before 25 days of

sowing at 15, 20, 25 and 30 q ha<sup>-1</sup> each. The per cent disease incidence (PDI) and yield was recorded at final harvest stage.

$$\text{Per cent disease incidence (PDI)} = \frac{\text{Total no. of wilt affected plants}}{\text{Total no. of plants observed}} \times 100$$

### Results and discussion

Among the fungicides, trimethyl thiuram disulphide (0.1 g g<sup>-1</sup> seed) was the best treatment to control the disease incidence (PDI 35.02%) which was on par with copper oxychloride, carbendazim and propiconazole (0.1 g g<sup>-1</sup> seed). Maximum yield was observed under the treatment copper oxychloride at all concentrations (Table 1). Champawat & Pathak (1991) reported that seed treatment with carbendazim and benomyl gave the best disease control and increased yield. Ghasolia & Jain (2004) also observed that carbendazim (0.2%) showed reduced pre-and post-emergence seedling mortality (8%-10%) and gave increased seed germination and vigour index. Bardia & Rai (2007) concluded that fungicides with bio-agents significantly reduced wilt disease incidence and increased the yield in cumin.

Among the oil cakes, lowest disease severity (31.05 PDI) was recorded under soil treatment with neem cake (30 q ha<sup>-1</sup>) which was on par with sesamum cake (25 q ha<sup>-1</sup>) (Table 2). Diyora & Khandar (1995) reported that mustard cake followed by groundnut cake was the most effective organic amendment for managing cumin wilt in pot culture. Mawar & Lodha (2002) observed that the combined effect of *Brassica* amendments (2.5 t ha<sup>-1</sup>) and summer irrigation was very effective to control wilt disease of cumin in the field. Neem cake at 0.5% to 5.0% and mustard cake at 0.5% and 2.0% levels were reported to be stimulatory for the vegetative growth of *F. oxysporum* f. sp. *lini* and *F. oxysporum* f. sp. *udum* (Singh & Singh 1970). Among the inorganic and organic fertilizer treatments, application of NPK @ 40 kg ha<sup>-1</sup> was the most suitable to control wilt disease severity (PDI 31.23%) which was on par with *Azotobacter*

**Table 1.** Effect of seed treatment with various fungicides on wilt disease incidence and yield of cumin

Fungicide	Quantity (g g <sup>-1</sup> seed)	Per cent disease incidence				Yield (kg ha <sup>-1</sup> )	Net cost (Rs ha <sup>-1</sup> )	Benefit (Rs ha <sup>-1</sup> )	C:B ratio	
		2004-05		2005-06						
		2004-05	2005-06	2004-05	2005-06					
Thiophanate methyl	0.1	40.20	40.17	40.18	284.00	291.75	287.87	352	14,393	1:40
Propiconazol	0.1	41.86	37.98	39.92	280.00	295.25	287.62	450	14,381	1:31
Trimethyl thiuram disulphide	0.1	38.12	31.93	35.02	312.75	311.75	312.25	570	15,612	1:27
Carbendazim	0.1	41.53	37.71	39.62	294.75	295.25	295.00	435	14,750	1:33
Copper oxychloride	0.1	38.89	39.53	39.21	315.25	349.75	332.50	745	16,625	1:22
Mancozeb	0.1	45.95	43.03	44.49	224.00	241.25	232.62	650	11,631	1:17
Captaf	0.1	50.50	42.07	46.28	230.00	240.75	235.37	440	11,768	1:26
Dinitrophenyl crotonate	0.1	49.29	42.80	46.04	231.25	242.50	236.87	548	11,843	1:21
Control		56.87	51.08	53.97	107.0	115.25	111.37			
Sem±		0.45	1.20	1.50	1.62	0.91	8.51			
CD (P=0.05)		3.51	4.35	6.97	18.94	12.75	23.42			

Net cost=Cost of cultivation + Labour charge + Rental value of instruments; Sale price of produce during 2004-06=Rs. 50 kg<sup>-1</sup>

**Table 2.** Effect of soil treatment with various oil cakes on wilt disease incidence and yield of cumin

Treatment	Quantity (q ha <sup>-1</sup> )	Per cent disease incidence				Yield (kg ha <sup>-1</sup> )	Net cost (Rs)	Benefit (Rs)	C:B ratio	
		2004-05		2005-06						
		2004-05	2005-06	2004-05	2005-06					
Neem cake	30	35.72	26.39	31.05	200.75	225.25	213.00	950	5900	1:6.2
Mustard cake	25	40.86	34.45	37.65	190.50	194.50	192.50	1125	4875	1:4.3
Sesamum cake	25	35.44	28.05	31.74	230.50	216.00	223.25	825	6412	1:7.7
Cotton cake	30	42.54	36.27	39.40	200.75	215.00	207.87	1375	5643	1:4.1
Groundnut cake	30	45.37	38.25	41.81	190.75	201.75	196.25	1140	5062	1:4.4
Control		55.44	52.22	53.83	89.50	100.50	95.00	0	0	0
Sem±		1.35	1.20	0.50	0.52	0.81	9.51			
CD (P=0.05)		5.51	8.35	4.97	3.94	2.75	21.82			

Net cost=Cost of cultivation + Labour share + Rental value of instruments; Sale price of produce during 2004-06=Rs.50 kg<sup>-1</sup>

(PDI 33.16) (Table 3). Sharma & Bohara (2001) observed that wilt disease severity was minimum with application of super-phosphate and goat dung. Champawat & Pathak (1988) reported that the lowest incidence of wilt disease together with maximum yield was obtained in plots treated with N, P and K at different concentrations.

Wilt disease incidence was minimum in plants grown in solarized soil (PDI 25.50) compared to non-solarized soil (PDI 48.50). Similar observations were made by Lodha (1995) and Mawar & Lodha (2002). The integrated trial indicated that solarized soil + sesamum cake @ 25 q ha<sup>-1</sup> + seed treatment with carbendazim @ 0.1g g<sup>-1</sup> seed had significant effect in reducing disease incidence as well as increasing yield (Table 4). Treatment with thiophanate methyl 0.1 g g<sup>-1</sup> gave highest cost: benefit ratio (1:40) followed by cabendazim (0.1g g<sup>-1</sup> (1:32). Among the combined treatments, the best and economical treatment was solarized soil + sesamum cake @ 25 q ha<sup>-1</sup> + seed treatment with carbendazim @ 0.1 g g<sup>-1</sup> seeds (1:11.4) followed by solarized soil + sesamum cake @ 25q ha<sup>-1</sup> + *Azotobacter* @ 40 kg ha<sup>-1</sup>. The present findings are in accordance with the findings of Jain *et al.* (1990) who reported that the soil application of neem, cotton, castor and mustard cakes (2 t ha<sup>-1</sup>) in combination with seed treatment with carbendazim reduced disease incidence and increased yield over control.

The study indicated that even though the individual treatments gave the highest C : B ratio, the combined treatment of seed and soil was more effective in controlling wilt disease. Hence, the combination of solarized soil + sesamum cake @ 25 q ha<sup>-1</sup> + seed treatment with carbendazim @ 0.1g g<sup>-1</sup> seed can be recommended for the management of wilt disease of cumin.

## References

- Baradia P K & Rai P K 2007 In vitro and field evaluation of bio-control agents and fungicides against wilt of cumin caused by *Fusarium oxysporum* f. sp. *cumini*. J. Spices Arom. Crops 6: 88-92.

**Table 3.** Effect of soil treatment with chemical and non-chemical manures on wilt disease of cumin

Treatment	Quantity	Per cent disease incidence				Yield (kg ha <sup>-1</sup> )		Net cost (Rs ha <sup>-1</sup> )	Benefit (Rs ha <sup>-1</sup> )	C:B ratio
		2004-05	2005-06	Pooled	2004-05	2005-06	Pooled			
NPK	40 kg ha <sup>-1</sup>	31.20	31.27	31.23	222.50	213.50	218.00	194	3461	1:32
Vermicompost	40 q ha <sup>-1</sup>	38.48	37.80	38.14	183.50	186.75	185.12	250	6225	1:18
<i>Azotobacter</i> (Biofertilizer)	40 kg ha <sup>-1</sup>	32.92	33.40	33.16	212.75	219.50	216.12	350	4581	1:17
Control		52.99	52.22	52.60	90.75	96.25	93.50	0	0	0
Solarized soil		23.50	27.50	25.50	170.22	155.25	162.73	92	6131	1:37
Un-solarized soil		42.50	54.50	48.50	92.75	85.50	89.62	0	0	0
Sem±		0.95	0.61	1.02	2.20	1.50	8.51			
CD (P=0.05)		2.80	2.56	3.64	13.75	14.64	22.22			

Net cost=Cost of cultivation + Labour charge + Rental value of instruments; Sale price of produce during 2004-06=Rs.50 kg<sup>-1</sup>

**Table 4.** Combined effect of seed treatment with fungicides, soil treatment with oilcakes, manures and soil solarization on wilt of cumin

Treatment	Per cent disease incidence			Yield (kg <sup>-1</sup> )		Net cost (Rs ha <sup>-1</sup> )	Benefit (Rs ha <sup>-1</sup> )	C:B ratio	
	2004-05	2005-06	Pooled	2004-05	2005-06				Pooled
Solarized soil + neem cake @ 30 q ha <sup>-1</sup> + <i>Azotobacter</i> @ 40 kg ha <sup>-1</sup>	28.56	26.42	27.49	325.20	320.22	322.71	1450	10,014	1:6.9
Neem cake @ 30 q ha <sup>-1</sup> + solarized soil + NPK @ 40 kg ha <sup>-1</sup>	25.50	25.52	25.51	316.00	330.33	323.16	1325	10,036	1:7.5
Solarized soil + neem cake @ 30 q ha <sup>-1</sup> + seed treatment with carbendazim @ 0.1g g <sup>-1</sup> seed	23.50	24.74	24.12	335.50	330.40	332.95	1525	10,526	1:6.9
Solarized soil + NPK @ 40 kg ha <sup>-1</sup> + seed treatment with trimethyl thiuram disulphide @ 0.1 g g <sup>-1</sup> seeds	26.33	28.66	27.49	315.55	312.46	314.00	1575	9578	1:6.0
Solarized soil + <i>Azotobacter</i> @ 40 kg ha <sup>-1</sup> + trimethyl thiuram disulphide @ 0.1 g g <sup>-1</sup> seed	32.50	33.33	32.91	310.56	309.33	309.94	1540	9375	1:6.0
Solarized soil + Sesamum cake @ 25 q ha <sup>-1</sup> + <i>Azotobacter</i> @ 40 kg ha <sup>-1</sup>	21.52	20.50	21.01	350.55	355.00	352.77	1650	17,638	1:10.7
Sesamum cake @ 25 q ha <sup>-1</sup> + Solarized soil + NPK @ 40 kg ha <sup>-1</sup>	24.74	22.50	23.62	335.56	331.00	333.28	1675	10,542	1:6.2
Solarized soil + Sesamum cake @ 25 q ha <sup>-1</sup> + seed treatment with carbendazim @ 0.1 g g <sup>-1</sup> seed	18.66	17.50	18.08	395.33	390.66	392.99	1725	19,649	1:11.4
Control	52.50	46.33	49.41	120.33	124.54	122.43	0	0	0
Sem±	0.11	0.56	0.84	2.95	2.25	5.21			
CD (P=0.05)	5.67	7.45	8.04	11.75	16.52	23.74			

Net cost=Cost of cultivation + Labour charge + Rental value of instruments; Sale price of produce during 2004-06=Rs.50 kg<sup>-1</sup>

- Champawat R S & Pathak V N 1988 Soil application of different insecticides and nematicides for the control of wilt. (*Fusarium oxysporum* f. sp. *cumini*) of cumin. Indian J. Plant Prot. 16: 195-196.
- Champawat R S & Pathak V N 1990 Management of cumin wilt by summer ploughing. Indian Cocoa Arecanut Spices J. 13: 107-108
- Champawat R S & Pathak V N 1991 Effect of fungicidal seed treatment on wilt disease of cumin. J. Turkish Phytopathol. 20: 23-26.
- Diyora P K & Khandar R R 1995 Management of wilt of cumin (*Cuminum cyminum* L.) by organic amendments. J. Spices Arom. Crops 4 : 80-81.
- Ghasolia R P & Jain S C 2004 Evaluation of fungicides, bio-agents, phyto-extracts and physical seed treatment against *Fusarium oxysporum* f. sp. *cumini* causing wilt in cumin. J. Mycol. Pl. Pathol. 34: 334-336.
- Jain M P, Bhati D S & Sharma R K 1990 Management of cumin wilt through soil amendments and fungicides. In: George C K, Edision S, Velappan E & Naidu R (Eds.) Proceedings: First National Seminar on Seed Spices ( pp. 510-513). Spices Board, Cochin.
- Lodha S 1995 Soil solarization, summer irrigation and amendment for the control of *Fusarium oxysporum* f. sp. *cumini* and *Macrophomina phaseolina* in acid soils. Crop Prot. 19: 215-219.
- Mawar R & Lodha S 2002 *Brassica* amendments and summer irrigation for the control of *Macrophomina phaseolina* and *Fusarium oxysporum* f. sp. *cumini* in hot arid region. Phytopathol. Medit. 41: 45-54.
- Sharma S & Bohara A 2001 Effect of chemical fertilizers and organic manure on wilt disease of cumin caused by *Fusarium oxysporum* var. *cumini*. J. Eco-Physiol. 4: 39-42.
- Vyas R K & Mathur K 2002 Distribution of *Trichoderma* species in cumin rhizosphere and their potential in suppression of wilt. Indian Phytopathol. 55: 451-457.

## Studies on nutrient management and seed rate on growth and herbage yield of fenugreek (*Trigonella corniculata* L.) cv. Kasuri in Rajasthan

N S Deora, Jitendra Singh & M L Reager<sup>1</sup>

Department of Horticulture  
College of Agriculture  
Rajasthan Agricultural University  
Bikaner-334 006, Rajasthan, India

Received 4 November 2007; Revised 26 November 2008; Accepted 20 April 2009

### Abstract

A field experiment was conducted at Bikaner and Jalore (Rajasthan) to study the effect of fertilizer and vermicompost and four levels of seed rate on growth attributes of fenugreek (*Trigonella corniculata*) cv. Kasuri. The results showed that application of fertilizer (20 kg N + 4 kg P<sub>2</sub>O<sub>5</sub> ha<sup>-1</sup>) increased plant height, number of branches plant<sup>-1</sup>, dry matter accumulation and number of root nodules, over control. Vermicompost @ 4 t ha<sup>-1</sup> significantly improved growth attributes. Growth parameters such as plant height, herbage yield and dry weight of leaves, increased significantly with increasing levels of seed rate up to 7.5 kg ha<sup>-1</sup>, whereas, nodules plant<sup>-1</sup>, fresh root weight and number of branches plant<sup>-1</sup> decreased significantly up to 7.5 kg ha<sup>-1</sup>.

**Keywords:** fenugreek, nutrition, *Trigonella corniculata*, seed rate, yield.

### Introduction

The productivity of fenugreek (*Trigonella corniculata* L.) is low in Rajasthan, since the crop is generally grown on marginal and sub-marginal lands with limited fertilizer and organic matter addition. An adequate supply of nitrogen and phosphorus and organic manures to fenugreek will provide an efficient source to sink relationship leading to higher productivity. Furthermore, adoption of improper dose of seed rate is another impediment in realizing higher yield potential of the crop. In view of the scant information on these aspects, the present study was undertaken to standardize optimum nutrient

management and seed rate on growth and herbage yield of fenugreek cv. Kasuri in Rajasthan.

### Materials and methods

The first experiment was conducted at Department of Horticulture, College of Agriculture, Bikaner (Rajasthan) during *rabi* 2005-06. The soil of the experimental field was loamy sand with 85.20% sand, 6.75% silt and 8.05% clay. The experimental soil was alkaline in reaction (pH 8.4) and was low in organic carbon (0.08 %), nitrogen (62.85 kg ha<sup>-1</sup>) and phosphorus (20.70 kg ha<sup>-1</sup>) and had medium potassium content (170.0 kg ha<sup>-1</sup>). Another experiment was conducted during *rabi*

<sup>1</sup>Present address: Krishi Vigyar Kendra, Jalore, Rajasthan, India.

**Table 1.** Effect of nutrient management and seed rate on plant population, growth and yield of fenugreek cv. Kasuri (Pooled data of 2005-06 & 2006-07)

Nutrient and seed rate	Plant population (ha <sup>-1</sup> )		Plant height (cm)		Herbage yield (kg ha <sup>-1</sup> )		No. of branches plant <sup>-1</sup>	No. of nodules plant <sup>-1</sup>		Fresh root weight plant <sup>-1</sup>	Dry root weight plant <sup>-1</sup>	
	15 DAS	150 DAS	First cutting	Second cutting	At harvest	First cutting		Second cutting	60 DAS			90 DAS
	Fertilizer (kg ha <sup>-1</sup> )											
No fertilizer	6244	3512	6.6	17.3	16.8	3224	489	4.6	11.8	37.8	2.39	0.81
20 N+40 P <sub>2</sub> O <sub>5</sub>	6396	3564	7.4	20.5	24.4	3444	7072	7.9	16.6	70.0	2.87	0.99
SEM±	56.8	46.4	0.08	0.35	0.13	40.00	86.80	0.09	0.20	1.21	0.05	0.02
CD (P=0.05)	NS	NS	0.23	0.99	0.38	113	246	0.27	0.55	3.43	0.13	0.05
Vermicompost (t ha <sup>-1</sup> )												
No vermicompost	6228	3492	6.7	18.1	20.1	3232	5532	5.7	12.9	46.5	2.45	0.85
4.0	6412	3588	7.3	19.7	21.0	3432	6428	6.8	15.5	61.3	2.81	0.95
SEM±	56.8	46.4	0.08	0.35	0.13	40.00	86.80	0.09	0.20	1.21	0.05	0.02
CD (P=0.05)	NS	NS	0.23	0.99	0.38	113	246	0.27	0.55	3.43	0.13	0.05
Seed rate (kg ha <sup>-1</sup> )												
2.5	1352	1176	2.6	7.3	9.60	1076	2384	4.1	9.2	37.2	2.00	0.57
5.0	2756	1724	3.6	8.5	10.2	1580	2736	3.2	7.6	27.7	1.40	0.49
7.5	3808	2024	3.9	10.7	10.7	1924	3388	2.7	6.2	22.9	1.06	0.40
10.0	4728	2156	3.9	11.4	10.7	2088	3452	2.5	5.4	20.0	0.80	0.34
SEM±	80.4	65.6	0.12	0.49	0.19	56.40	122.80	0.13	0.28	1.71	0.07	0.02
CD (P=0.05)	227.2	186	0.33	1.39	0.53	160	348	0.38	0.78	4.85	0.19	0.07

NS=Non significant; DAS=Days after sowing



2006-07 at Krishi Vigyan Kendra, Jalore (Rajasthan) having silty loam soil with pH 8.2, EC 0.17 dSm<sup>-1</sup>, organic carbon 0.25%, phosphorus 8.6 kg P ha<sup>-1</sup> and potassium 279.7 kg K ha<sup>-1</sup>. The treatments comprised of two levels of fertilizers (0 and 20 kg N + 40 kg P<sub>2</sub>O<sub>5</sub> ha<sup>-1</sup>) and vermi compost (0 and 4.0 t ha<sup>-1</sup>) and four levels of seed rate (2.5, 5.0, 7.5 and 10.0 kg ha<sup>-1</sup>) and laid out in a factorial RBD with three replications. Vermicompost, nitrogen and phosphorus were applied as basal dose. Nitrogen and phosphorus were supplied through urea and single super phosphate, respectively. The crop was sown in rows spaced 25 cm apart through 'Kera' methods on 9<sup>th</sup> November 2005 and 17<sup>th</sup> November 2006 during respective years. Observations were recorded on different growth parameters of the crop.

## Results and discussion

### *Effect of fertilizer*

Application of 20 kg N + 40 kg P<sub>2</sub>O<sub>5</sub> ha<sup>-1</sup> significantly enhanced plant growth as manifested by increased plant height at first and second cutting and at harvest, number of nodules at 60 and 90 days after sowing (DAS), fresh and dry weight of root at pre-flowering stage, herbage yield and dry weight of leaves at first and second cutting and number of branches plant<sup>-1</sup> over control during both the years as well as in pooled data of two years (Table 1). Patel *et al.* (1991) have also reported hastened plant growth in fenugreek following application of nitrogen and phosphorus.

### *Effect of vermicompost*

Application of 4 t ha<sup>-1</sup> vermicompost significantly enhanced plant height at first and second cutting and at harvest, number

of nodules at 60 and 90 DAS, fresh and dry weight of root at pre-flowering stage, herbage yield and dry weight of leaves at first and second cutting and number of branches plant<sup>-1</sup> during both the years as well as in pooled data of two years (Table 1).

### *Effect of seed rate*

Seed rate influenced crop growth and 10 kg ha<sup>-1</sup> produced maximum plant population which was significantly higher over rest of the seed rates (Table 1). Growth parameters such as plant height at first and second cutting and at harvest, herbage yield and dry weight of leaves at first and second cutting were influenced significantly due to adoption of seed rate @ 10 kg ha<sup>-1</sup> which was at par with the seed rate of 7.5 kg ha<sup>-1</sup> during both the years, whereas, the pooled data over years showed significant results up to 10 kg ha<sup>-1</sup>. Growth parameters of fenugreek increased significantly with decreasing seed rate. Significantly more number of branches, more number of nodules, fresh and dry weight of root and number of branches plant<sup>-1</sup> were recorded with the seed rate of 2.5 kg ha<sup>-1</sup> than that obtained under higher seed rate. Probably, this may be due to more space available to individual plants at lower seed rate. Similar findings were also reported by Sharma (1990) in fenugreek.

## References

- Patel B A, Patel R G, Amin A & Patel M V 1991 Response of fenugreek to N, P and K Indian. J. Argon. 36: 389-391.
- Sharma P C 1990 Effect of seed rates, row spacing and growth regulators on the yield of methi (*Trigonella foenum-graecum* L.). MSc (Ag.) Thesis, Rajasthan Agricultural University, Bikaner.

## Effect of method of planting and harvesting time on growth, yield and quality of turmeric (*Curcuma longa* L.)

Balwinder Kumar<sup>1</sup> & B S Gill

Department of Agronomy  
Punjab Agricultural University  
Ludhiana-141 004, Punjab, India

Received 24 June 2008; Revised 3 January 2009; Accepted 20 April 2009

---

### Abstract

An experiment was conducted at Ludhiana (Punjab) to study the influence of method of planting (flat and ridge planting) and harvesting time (10 November-12 March) on growth, yield and of quality turmeric (*Curcuma longa*). Planting methods did not influence growth, yield and quality of turmeric significantly. Harvesting on 12<sup>th</sup> March produced maximum fresh rhizome yield of 28.94 t ha<sup>-1</sup> (mean yield) of turmeric which was statistically on par with 20<sup>th</sup> February (27.61 t ha<sup>-1</sup>) and 30<sup>th</sup> January (26.78 t ha<sup>-1</sup>) harvesting, but was significantly better than all the earlier harvesting dates. A similar trend was observed in processed turmeric yield. The number and weight of rhizomes improved significantly with delay in harvesting. The oil and curcumin content also increased with delay in harvesting.

**Keywords:** *Curcuma longa*, growth, method of planting, quality, time of harvesting, turmeric, yield.

---

### Introduction

Turmeric (*Curcuma longa* L.) offers good scope in diversification of cereal based cropping system in Punjab. The time of maturity of turmeric may vary in different agro climatic zones of the country and it is important to find out the optimum time for harvesting turmeric to fit this crop in the existing cropping system of the state. Optimum stage of harvesting plays an important role in obtaining high quality turmeric in terms of essential oil and curcumin contents. No information is

available on the effect of harvesting time on yield and quality of turmeric under Punjab conditions. Hence, the present study was conducted to determine the optimum harvesting time under flat and ridge planting methods in turmeric.

### Materials and methods

The investigation was carried out at Students' Farm, Department of Agronomy, Punjab Agricultural University, Ludhiana (Punjab) during 2003-04 and 2004-05. The soil of experimental field was loamy sand, normal

---

<sup>1</sup>Department of Animal Breeding and Genetics, Guru Angad Dev Veterinary and Animal Sciences University (GADVASU), Ludhiana-141 004, Punjab, India.

with respect to pH (8.0) and EC ( $0.2 \text{ dSm}^{-1}$  at  $25^\circ\text{C}$ ), low in organic carbon (0.23%) and available nitrogen ( $210 \text{ kg ha}^{-1}$ ), medium in available phosphorus ( $17 \text{ kg ha}^{-1}$ ) and potash ( $207 \text{ kg ha}^{-1}$ ). The treatments consisted of two planting methods (flat and ridge) and seven dates of harvesting namely, 10<sup>th</sup> November (187 DAP), 30<sup>th</sup> November (207 DAP), 20<sup>th</sup> December (227 DAP), 10<sup>th</sup> January 247 (DAP), 30<sup>th</sup> January (267 DAP), 20<sup>th</sup> February (287 DAP) and 12<sup>th</sup> March (307 DAP). Planting of PCT-8 variety of turmeric was done on 7<sup>th</sup> May at  $30 \text{ cm} \times 20 \text{ cm}$  in flat planting treatment and in ridge planting treatment on ridges made at  $60 \text{ cm}$  apart with a plant to plant spacing of  $10 \text{ cm}$  to maintain uniform planting density in both the planting methods during both the years. Farmyard manure ( $30 \text{ t ha}^{-1}$ ) was thoroughly mixed at the time of seed bed preparation. A basal dose of phosphorus and potassium (each of  $25 \text{ kg ha}^{-1}$ ) was applied at seed bed preparation;  $30 \text{ kg N ha}^{-1}$  was applied after emergence of crop. To keep the weeds under check, pendimethalin 30 EC ( $2.5 \text{ l ha}^{-1}$ ) was sprayed 3 days after planting and four hand weedings were also done. After hoeing (last two), earthing up in ridge planting treatment was done. Growth and yield parameters namely, plant height, green leaves plant<sup>-1</sup>, senescence, number and weight of mother, primary and secondary rhizomes (g), were recorded at harvest. Senescence was computed as number of senesced (dry) leaves/total number of leaves  $\times 100$ . The crop was harvested by digging on different dates in both the planting methods just after the removal of shoots near the ground. The essential oil (% v/w) content was determined using Clevenger's apparatus in which  $25 \text{ g}$  of turmeric powder was distilled for  $4.5 \text{ h}$  and essential oil yield was determined. The curcumin content was determined following the method given in Thimmaiah (1999).

## Results and discussion

### *Effect of planting method*

Different planting methods did not influence the number of green leaves plant<sup>-1</sup>, leaf

senescence and the number and weight of mother, primary and secondary rhizomes, during both the years (Tables 1 & 2). Plants were taller in flat method of planting as compared to ridge method during 2003-04 and the differences were not significant during 2004-05 (Table 1).

During 2003-04, fresh turmeric rhizome yield was significantly higher in flat planting method than ridge method while the difference was not significant during 2004-05 (Table 3). Pooled analysis of the mean data indicated that the differences in fresh rhizome yield was not significant. A similar trend was observed with dry and processed yield of turmeric. The non-significant differences in fresh, dry and processed yield due to different planting methods might be attributed to the non-significant differences in growth and yield attributing characters of turmeric. The soil of the experimental field was light and low in organic carbon as well as available nitrogen due to which different planting methods might have failed to influence the yield and growth characters. Ramachandran & Muthuswami (1984) reported non-significant results in fresh rhizome yield, when turmeric was sown by different types of planting methods namely, ridge and furrow, flat bed and broad ridge method. The oil content and curcumin content in rhizome did not change significantly with different planting methods (Table 3). Kaur (2001) also reported that curcumin content did not change in flat and ridge planted turmeric at Ludhiana.

### *Effect of harvesting date*

The effect of different harvesting dates on plant height was not significant during both the years of study (Table 1). The delay in harvesting decreased the number of green leaves plant<sup>-1</sup> significantly during both the years (Table 1). The reduction in number of green leaves at harvest with delay in harvesting might be due to more drying and deterioration of leaves with passage of time, especially those which come in contact with the soil. In addition to this, tearing / rotting

**Table 1.** Effect of planting methods and harvesting dates on growth characters of turmeric recorded at harvest

Treatment	Growth parameter					
	2003-04			2004-05		
	Height (cm)	Leaves (green) plant <sup>-1</sup>	Senescence (%)	Height (cm)	Leaves (green) plant <sup>-1</sup>	Senescence (%)
<i>Planting method</i>						
Flat	53.9	15.3	67.76 (61.77)*	54.9	14.4	77.99 (69.84)
Ridge	47.5	14.5	65.52 (59.95)	55.0	14.2	76.96 (68.91)
CD (P=0.05)	3.8	NS	NS	NS	NS	NS
<i>Harvesting date</i>						
10 November	47.0	17.6	21.47 (27.55)	53.0	15.5	23.98 (29.28)
30 November	47.5	16.8	27.29 (31.39)	53.4	16.5	38.84 (38.51)
20 December	48.6	16.2	48.12 (43.86)	55.2	14.6	80.99 (62.68)
10 January	51.4	14.6	69.69 (55.63)	54.0	13.7	99.45 (87.40)
30 January	52.8	14.3	100.0 (89.20)	57.9	13.6	100.0 (89.24)
20 February	51.7	13.5	100.0 (89.20)	54.3	13.3	100.0 (89.25)
12 March	52.6	11.3	100.0 (89.20)	57.5	12.8	100.0 (89.25)
CD (P=0.05)	NS	2.2	4.82	NS	1.5	2.90

\*Figures in parenthesis are arc-sine transformation; Interactions: NS

of leaves also increased as harvesting was delayed. Similar results were reported by Govind & Gupta (1987), that number of leaves plant<sup>-1</sup> increased only up to middle of October and thereafter number of leaves plant<sup>-1</sup> became constant.

Each delay in harvesting increased the number of mother, primary and secondary rhizomes plant<sup>-1</sup> except mother rhizomes during 2004-05 (Table 2). Govind & Gupta (1987) also reported that total number of rhizomes increased from 7.6 to 47.5 plant<sup>-1</sup> as the harvesting of turmeric was delayed from mid of August to end of December. The effect

of different harvesting dates on fresh weight of mother, primary, secondary as well as total rhizome weight plant<sup>-1</sup> was significant during both the years (Table 2). With each delay in harvesting, the weight of mother, primary and secondary rhizomes increased except in case of primary (20<sup>th</sup> December) and secondary rhizome (12<sup>th</sup> March) during 2003-04. The increase in number and weight of different rhizomes with each delay in harvesting was due to the longer growth period of the plants during which they absorb more moisture and nutrients through their roots and hence resulted in increased number and weight of different rhizomes. Each delay

**Table 2.** Effect of planting methods and harvesting dates on number and weight of rhizomes plant<sup>-1</sup>

Treatment	No. of rhizomes plant <sup>-1</sup>											
	2003-04						2004-05					
	Mother		Primary		Secondary		Mother		Primary		Secondary	
	No.	Wt. (g)	No.	Wt. (g)	No.	Wt. (g)	No.	Wt. (g)	No.	Wt. (g)	No.	Wt. (g)
<i>Planting method</i>												
Flat	3.42	80.10	7.05	55.35	6.12	10.85	3.22	81.92	6.67	76.13	6.41	19.66
Ridge	3.45	79.85	7.38	54.17	5.11	9.36	3.14	81.98	6.73	79.84	6.34	20.35
CD (P=0.05)	NS	NS	NS	NS	NS	NS	NS	NS	NS	NS	NS	NS
<i>Harvesting date</i>												
10 November	3.10	56.66	5.87	35.96	4.85	7.93	3.02	64.07	5.82	49.00	5.02	11.66
30 November	3.30	57.12	6.68	43.75	5.10	9.01	3.07	65.05	5.90	54.45	5.05	12.04
20 December	3.33	62.20	7.15	43.43	5.25	9.32	3.10	70.43	5.92	58.90	5.22	13.55
10 January	3.50	78.41	7.50	55.35	5.27	9.52	3.22	86.78	6.90	76.03	6.48	18.97
30 January	3.55	92.25	7.52	64.50	5.45	10.72	3.20	89.41	7.05	81.18	6.60	20.04
20 February	3.56	104.63	7.80	66.20	6.55	12.21	3.20	95.66	7.50	105.53	7.73	29.43
12 March	3.73	108.38	7.98	75.15	6.82	12.10	3.25	102.25	7.87	120.85	8.53	34.36
CD (P=0.05)	NS	15.19	NS	16.00	NS	2.07	NS	10.64	0.95	17.03	1.22	6.73

Interactions: NS

in harvesting from 10<sup>th</sup> November to 30<sup>th</sup> January increased leaf senescence significantly and complete senescence of leaf was recorded on 30<sup>th</sup> January. The more the number of green photosynthetically active leaves, more will be their contribution towards crop yield. This indicates that all the leaves of the plants became completely dry by 30<sup>th</sup> January and this might have resulted in the significant increase in turmeric yield only up to 30<sup>th</sup> January and after this date the increase in turmeric yield due to delay in harvesting was not significant.

During 2003-04, 12<sup>th</sup> March harvesting produced the highest fresh, dry and processed turmeric yield which was statistically identical to 20<sup>th</sup> February and 30<sup>th</sup> January harvesting, but was significantly better than all earlier harvesting dates (Table 3). A similar trend was observed in fresh turmeric rhizome yield during 2004-05. The dry and processed yield of 12<sup>th</sup> March was on par with January and February harvesting dates but was better than November and December harvestings.

Mean yield of data revealed that each delay in harvesting from 10<sup>th</sup> November to 12<sup>th</sup> March increased the fresh, dry and processed turmeric yield (Table 3). The increase in turmeric yield with delay in harvesting was due to increased number and weight of mother, primary, secondary as well as total rhizomes plant<sup>-1</sup> (Table 2). The quantum of increase in turmeric yield was more during initial harvesting dates and this might be because when the leaves start drying, all the photosynthates are transferred to rhizomes at faster rate and result in more bulking of rhizomes plant<sup>-1</sup>. However, the increase was less during the later stages (30<sup>th</sup> January, 20<sup>th</sup> February and 12<sup>th</sup> March) since the photosynthates of root only were transferred from the roots to rhizomes as the leaves had become fully dry by 30<sup>th</sup> January. In addition to this the increased uptake of moisture and nutrient by rhizome from the soil also leads to the increase in yield with each delay in harvesting date. Satheesan & Ramdasan (1988) reported that the stage of maximum rhizome growth rate of turmeric coincided

**Table 3.** Effect of planting methods and harvesting dates on oil and curcumin content of turmeric

Treatment	2003-04				2004-05				Mean yield				
	Fresh rhizome yield (t ha <sup>-1</sup> )	Dry rhizome yield (t ha <sup>-1</sup> )	Processed rhizome yield (t ha <sup>-1</sup> )	Oil content (%)	Curcumin content (%)	Fresh rhizome yield (t ha <sup>-1</sup> )	Dry rhizome yield (t ha <sup>-1</sup> )	Processed rhizome yield (t ha <sup>-1</sup> )	Oil content (%)	Curcumin content (%)	Fresh rhizome yield (t ha <sup>-1</sup> )	Dry rhizome yield (t ha <sup>-1</sup> )	Processed rhizome yield (t ha <sup>-1</sup> )
<i>Planting method</i>													
Flat	22.37	4.55	4.31	6.77	2.36	26.03	4.93	4.31	7.43	2.49	24.20	4.74	4.49
Ridge	19.18	4.15	3.93	6.46	2.31	26.51	5.10	3.92	7.32	2.43	22.83	4.63	4.39
CD (P=0.05)	1.70	0.34	0.31	NS	NS	NS	NS	0.31	NS	NS	NS	NS	NS
<i>Harvesting date</i>													
10 November	12.29	2.04	1.87	4.22	1.95	17.51	2.63	2.46	6.45	1.81	14.91	2.33	2.17
30 November	16.02	2.99	2.91	6.07	2.01	20.10	3.82	3.59	6.75	1.95	18.06	3.42	3.25
20 December	20.63	4.42	4.18	6.60	1.98	26.20	5.13	4.92	7.23	2.25	23.42	4.77	4.55
10 January	21.61	4.74	4.52	7.22	2.26	28.18	5.73	5.47	7.30	2.56	24.89	5.23	4.99
30 January	24.35	5.33	5.05	7.25	2.48	29.32	5.78	5.51	7.65	2.80	26.78	5.55	5.28
20 February	24.42	5.47	5.12	7.30	2.83	30.79	5.98	5.64	7.90	2.89	27.61	5.72	5.38
12 March	26.07	5.50	5.17	7.62	2.84	31.80	6.03	5.78	8.38	2.98	28.94	5.76	5.47
CD (P=0.05)	3.18	0.64	0.58	0.85	0.40	3.04	0.57	0.58	0.53	0.21	3.10	0.73	0.41

Interactions: NS

with reduction in starch : sugar ratio in leaves. Such marked reduction in starch : sugar ratio in leaves indicated that during rhizome bulking period, there is more translocation of photosynthates to the rhizomes. Govind & Gupta (1987) reported increased fresh rhizome yield when the harvesting was delayed from second week of August to last week of December. Subramaniam *et al.* (1978) recorded 46.3% increase in fresh rhizome yield when turmeric was harvested after 9 months as compared to the 7 months. Pachauri *et al.* (2002) also suggested that January-February is the ideal period of turmeric harvesting in the Indo-Gangetic plains of India.

The effect of different harvesting dates on oil content of turmeric was significant (Table 3). With each delay in harvesting, the oil content in turmeric improved. Maximum oil content of 7.62% and 8.38% was recorded in 12<sup>th</sup> March harvesting date during both the years and it was on par with 10<sup>th</sup> January, 30<sup>th</sup> January and 20<sup>th</sup> February harvesting dates, but was significantly better than all earlier harvesting dates during both the years of study. Govind & Gupta (1987) also reported continuous increase in oil content when harvesting of turmeric was delayed from middle of August to last week of December. With delay in harvesting curcumin content in turmeric improved. Maximum curcumin content of 2.84% and 2.98% was recorded in 12<sup>th</sup> March harvesting during 2003-04 and 2004-05, respectively and it was on par with 30<sup>th</sup> January and 20<sup>th</sup> February harvesting dates but was significantly better than all other earlier harvesting dates. Pachauri *et al.* (2002) also reported similar results and reported that the curcumin content increased with each delay in harvesting from last week of October (3.65%) to last week of February (6.01%). But Tonnesen *et al.* (1989) reported that the average content of curcumin was 1.11% which did not change significantly when the harvesting was done at weekly

intervals starting from 24<sup>th</sup> October to 13<sup>th</sup> February. In conclusion, the study indicated that planting method did not influence the growth, yield and quality, whereas, delayed harvest recorded more yield and better quality in turmeric.

## References

- Govind S & Gupta P N 1987 Studies on optimum harvesting time of turmeric. Haryana J. Hort. Sci. 16: 257-263.
- Kaur S 2001 Effect of spacing and farmyard manure levels on growth and yield of flat and ridge planted turmeric. MSc Thesis, Punjab Agricultural University, Ludhiana.
- Pachauri G, Pandey V, Rai S K, Katiyar R S, Dixit B S, Banarji R & Singh S P 2002 Curcumin content in relation to date of harvesting in turmeric (*C. longa* L.). Indian J. Pl. Gen. Resource 15: 72-73.
- Ramachandran M & Muthuswami S 1984. Studies on the influence of method of planting and spacing on yield and quality of turmeric. South Indian Hort. 32: 85-87.
- Satheesan K V & Ramadasan A 1988 Changes in carbohydrate levels and starch/sugar ratio in three (*Curcuma domestica* Val.) cultivars grown in monoculture and as an intercrop in coconut garden. J. Plantn. Crops 16 : 45-51.
- Subramaniam S, Silvaraj K V, Ramaswamy K P & Ramaswamy P P 1978 A note on the manurial requirement and time of harvest of turmeric (*Curcuma longa* L.). Madras Agric. J. 65: 818-819.
- Thimmaiah S K 1999 Standard Methods of Biochemical Analysis, Kalyani Publishers, New Delhi.
- Tonnesen H H, Karlsen J, Adhikary S R & Pandey R 1989 Studies on curcumin and curcuminoids. XVII. Variation in the content of curcuminoids in *Curcuma longa* L. from Nepal during one season. Lebensmittel-Untersuchung-Forschung 189 : 116-118.

## Polymerase chain reaction (PCR) based indexing of black pepper (*Piper nigrum* L.) plants against *Piper yellow mottle virus*

A I Bhat, A Siljo, M V Jiby, C K Thankamani & P A Mathew

*Indian Institute of Spices Research*  
Marikunnu P.O., Calicut-673 012, Kerala, India  
E-mail: aib65@yahoo.co.in

Received 17 September 2008; Revised 28 January 2009; Accepted 20 April 2009

---

### Abstract

A polymerase chain reaction (PCR) based method was used for indexing 845 plants representing 14 popular varieties of black pepper (*Piper nigrum*) showing no visible external symptoms (apparently healthy) for *Piper yellow mottle virus* (PYMoV), among which 694 plants were positive (82%) for PYMoV. The percentage of infected plants ranged from 59% to 100% in different varieties; 100% of the tested plants of Panniyur-6 were infected with PYMoV and Sreekara had the least number of infected plants (59%). Some of the indexed PCR positive plants exhibited visible symptoms such as mild chlorosis, yellow specks and mottling in 1-3 months after testing. The study showed that indexing by PCR successfully detected PYMoV in infected black pepper plants showing no visible symptoms. The method can be used in certification programmes to identify PYMoV-free plants for further propagation.

**Keywords:** black pepper, indexing, PCR, *Piper nigrum*, *Piper yellow mottle virus*.

**Abbreviations:** CTAB=Cetyl trimethyl ammonium bromide; DNA=Deoxyribonucleic acid; dNTP=Deoxyribonucleotide triphosphate; EDTA=Ethylene diamine tetra-acetic acid; ELISA=Enzyme linked immunosorbent assay; ORF=Open reading frame; PVP=Polyvinyl pyrrolidone; PYMoV=*Piper yellow mottle virus*.

---

*Piper yellow mottle virus* (PYMoV), a Badnavirus, is an important virus associated with black pepper (*Piper nigrum* L.) in many countries such as Brazil, Indonesia, Malaysia, Philippines, Sri Lanka, Thailand and India (Lockhart *et al.* 1997; Duarte *et al.* 2001; de Silva *et al.* 2002; Bhat *et al.* 2003; Hareesh & Bhat 2008). Mosaic, mottling, reduction in leaf size and stunting of the plant are the major symptoms of the disease. The primary spread of the disease is by infected stem cuttings used as planting material while

secondary spread in the field is through different species of mealybugs (Bhat 2008).

Proper detection of causal pathogens and use of healthy planting material are the prerequisites for integrated management of viral diseases. Seasonal variation, genotype, viral load, growth stage and other factors influence the expression of symptoms in a plant. Masking of visible external symptoms especially during monsoon months was observed in black pepper indicating that symptomatology cannot be the sole criterion



in identifying infected plants. ELISA based methods also failed to provide fool-proof detection of PYMoV owing to low titre of the virus in plants (Bhadramurthy *et al.* 2005). As black pepper is clonally propagated through stem cuttings, it is important to identify virus-free plants, to be used as mother plants for further propagation. Hence in the present study, a PCR-based method was developed and used in indexing black pepper plants, the results of which are presented here.

Fourteen popular varieties of black pepper plants collected from farmers fields and Indian Institute of Spices Research (IISR), Experimental Farm, Peruvannamuzhi (Kerala) were used in the study. The popular varieties included, Sreekara, Subhakara, IISR-Malabar Excel, IISR-Girimunda, IISR-Thevam, IISR-Shakthi, Panchami, Pournami, Panniyur-1, Panniyur-2, Panniyur-3, Panniyur-4, Panniyur-5 and Panniyur-6. The first fully opened leaf from each of the plants showing no visible symptoms (apparently healthy) were collected and processed for total DNA isolation.

Total DNA was isolated slightly modifying the protocol described by de Silva *et al.* (2002). Briefly, 100 mg of leaf tissue was ground in 500 µl of CTAB buffer [100 mM Tris HCl (pH 8), 4 mM EDTA (pH 8), 1.4 M NaCl, 2% CTAB, 1% PVP, 0.5% 2-mercaptoethanol] and incubated at 65°C for 30 min. The homogenate was allowed to cool to room temperature, extracted with an equal volume of phenol : chloroform : isoamyl alcohol (25:24:1) and centrifuged at 2500 g for 10 min at room temperature. The supernatant was collected and 0.1 volume of 10% CTAB was added. This mixture was re-extracted using chloroform : isoamyl alcohol (24:1) followed by centrifugation at 2500 g for 10 min at room temperature. The supernatant was added with 0.1 volume of 3 M sodium acetate (pH 5.2) and an equal volume of isopropanol followed by incubation in ice for 30 min. The DNA was pelletized by centrifugation at 7000 g for 15 min at 4°C, washed in 70% ethanol,

air dried and dissolved in 100 µl sterile distilled water.

The primer pair for PCR detection was designed based on the ORF III sequence of the virus infecting black pepper in India (GenBank accession No. DQ836227). The forward primer 5' CTATATGAATGGCTAGTGATG 3' and reverse primer 5' TTCCTAGGTTTGGTATGTATG 3' represented portion of ORF-III region. The positive PCR reaction was identified by specific amplification obtained at 400 bp. The identity of the amplicon was confirmed by directly sequencing the 400 bp product in an automated sequencing facility at Genei, Bangalore. Each PCR always included a known positive (infected black pepper) and negative (healthy black pepper) controls. As virus titre was found to vary in plants, each sample was subjected to PCR using two template volumes namely, 1.0 µl and 0.5 µl in a 25 µl reaction volume. The PCR reaction contained 1 x PCR buffer, 2.5 mM MgCl<sub>2</sub>, 200 µM dNTPs, 25 ng each of forward and reverse primers, 1.5 units of Taq polymerase, template DNA and sterile water to a final volume of 25 µl. The thermal cycler was programmed for initial denaturation at 94°C for 3 min, followed by 34 cycles of denaturation at 94°C for 30 s, annealing at 56°C for 1 min, synthesis at 72°C for 1 min and a final extension for 10 min at 72°C. The PCR products were analyzed on 1% agarose gel. A sample was considered positive if it gave expected amplified product using either 1.0 µl and / or 0.5 µl template volume. Total DNA isolation and PCR tests were repeated for all plants that gave negative results. The tested plants were kept under insect-proof conditions and observed for any visible symptom production.

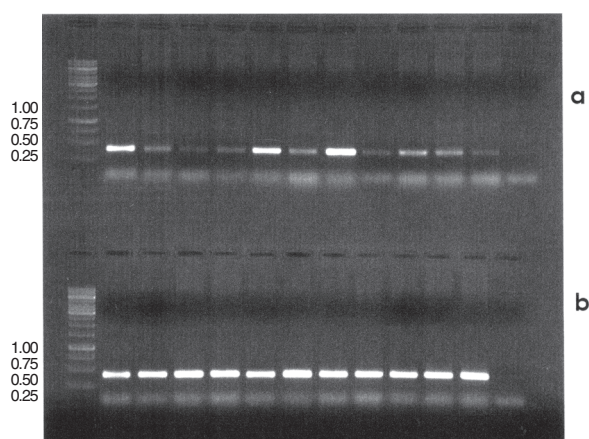
In order to standardize the volume of template DNA required for the PCR, initially PCR was carried out using different template volumes such as 0.25 µl, 0.5 µl, 1.0 µl and 5.0 µl. Among them, 0.5 µl and 1.0 µl were found optimum. Direct sequencing of PCR

product showed 100% identity with PYMoV ORF III region sequence deposited at GenBank (DQ836227) thus confirming the specificity of the PCR product. Further, within 0.5 and 1.0  $\mu$ l template volumes, 0.5  $\mu$ l was found better as intensity of the band was higher (Fig. 1 a & b; Fig. 2 a & b). However, as infected field plants may contain varying concentrations of the virus, to score a plant either as positive

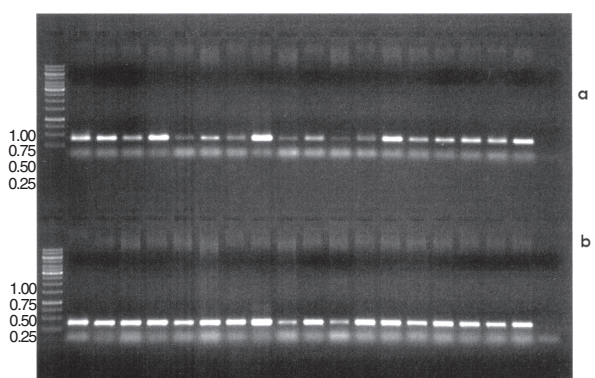
or negative for PYMoV, each sample was subjected to PCR at two template volumes (0.5  $\mu$ l and 1.0  $\mu$ l) and the sample was considered positive if it gave expected amplified product either at 1.0  $\mu$ l and /or 0.5  $\mu$ l template volume.

Among the 845 plants representing 14 varieties tested by PCR, 694 were positive for PYMoV (82%) indicating high incidence of the virus (Table 1; Figs. 1 and 2). The percentage of infected plants ranged from 59 to 100 in different varieties. Among the varieties, all the indexed plants of Panniyur-6 showed positive reaction (100%); Sreekara showed least number of infected plants (59%) (Table 1). Some of the indexed plants exhibited visible symptoms such as mild chlorosis, yellow specks and mottling in 1-3 months. The high incidence of the virus observed could be due to the use of cuttings from infected plant as source of planting material. Further, a few badnaviruses such as *Banana streak virus* and *Tobacco vein clearing virus* are known to integrate their genome into the host and such plants may remain symptomless (Harper *et al.* 1999; Lockhart *et al.* 2000). However, whether such a phenomena occur in PYMoV-black pepper system is yet to be studied.

The study showed that PCR method can be successfully used for the detection of PYMoV infection in black pepper especially in plants showing no visible symptoms. Variations in visible external symptoms from severe to complete absence of symptoms in infected black pepper plants were seen during different months of the year. This may be attributed to the influence of environmental factors on symptom expression. This kind of variation was reported for *Citrus yellow mosaic virus* infecting citrus, *Leek yellow stripe virus* infecting garlic and different viruses infecting potato (DeBokx & Piron 1977; Conci *et al.* 2002; Baranwal *et al.* 2003). When the symptoms are masked it is difficult to distinguish between healthy and infected plants. Masking of symptoms on black pepper plants infected with PYMoV makes it difficult to identify infected plants and hence sensitive



**Fig. 1.** Indexing black pepper plants for *Piper yellow mottle virus* (PYMoV) through PCR. Lane M: 1 Kb ladder; Lane 1: Positive control (known infected plant); Lanes 2-11: Test plants of var. Sreekara; Lane 12: Negative control (known healthy black pepper plant) (a) PCR performed with 1.0  $\mu$ l template; (b) PCR performed with 0.5  $\mu$ l template



**Fig. 2.** Indexing black pepper plants for *Piper yellow mottle virus* (PYMoV) through PCR. Lane M: 1 Kb ladder; Lane 1: Positive control (known infected plant); Lanes 2-18: Test plants of var. Panchami; Lane 19: Negative control (known healthy black pepper plant) (a) PCR performed with 1.0  $\mu$ l template; (b) PCR performed with 0.5  $\mu$ l template

**Table 1.** Indexing black pepper nursery plants for the presence of PYMoV in different varieties through PCR

Variety	No. of plants tested	No. positive for PYMoV	Infected plants (%)
Sreekara	107	63	59
Subhakara	90	77	86
IISR-Thevam	58	43	74
IISR-Girimunda	43	33	77
IISR-Malabar Excel	76	59	78
Panchami	93	84	90
Pournami	47	39	83
IISR-Shakthi	64	52	81
Panniyur-1	106	104	98
Panniyur-2	23	20	87
Panniyur-3	67	58	86
Panniyur-4	11	9	82
Panniyur-5	22	15	68
Panniyur-6	38	38	100
Total	845	694	82

diagnosis is necessary to differentiate healthy and infected plants. ELISA-based method was not found to be fool proof always due to low titre of the virus in black pepper plants (Bhadramurthy *et al.* 2005). Many of the indexed PCR positive plants developed visible external symptoms with time. Similar results were also observed for *Apple stem grooving virus* in pear and apple certification program (Batlle *et al.* 2004). These results clearly indicate that a plant cannot be judged as healthy solely on the visible external symptoms but a much sensitive detection technique like PCR is useful in identifying healthy and infected black pepper plants. Thus the PCR method developed in the present study can be used in certification programmes to identify PYMoV-free plants for further propagation. The method would also be useful for screening germplasm to identify resistant sources against virus, detection in potential weed hosts and vectors and epidemiological studies.

#### Acknowledgements

We thank Mrs. P K Chandravally for technical assistance and Head, Division of

Crop Protection and Director, Indian Institute of Spices Research, Calicut, for providing facilities.

#### References

- Baranwal V K, Majumder S, Ahlawat Y S & Singh R P 2003 Sodium sulphite yields improved DNA of higher stability for PCR detection of *Citrus yellow mosaic virus* from citrus leaves. *J. Virol. Methods* 112: 153-156.
- Batlle A, Laviña A, García-Chapa M, Sabate J, Folch C & Asin L 2004 Comparative results between different detection methods of virus and phytoplasmas for a pear and apple certification program. *Acta Horticulturae* 657: 71-77.
- Bhadramurthy V, Retheesh S T, Bhat A I, Madhubala R, Hareesh P S & Pant R P 2005 Development of ELISA-based technique for the detection of a putative Badnavirus infecting black pepper (*Piper nigrum* L.). *Indian Phytopath.* 58: 314-318.
- Bhat A I 2008 Viral diseases of some important spice crops In: Rao G P, Myrta A & Ling K S (Eds.) *Characterization, Diagnosis and Management of Plant Viruses*, Vol

- 2, Horticultural Crops (pp. 223-248). Stadium Press, LLC, USA.
- Bhat A I, Devasahayam S, Sarma Y R & Pant R P 2003 Association of a Badnavirus transmitted by mealybug (*Ferrisia virgata*) with black pepper (*Piper nigrum* L.) in India. *Curr. Sci.* 84: 1547-1550.
- Conci V C, Lunello P, Buraschi D, Italia RR & Nome S F 2002 Variations of *Leek yellow stripe virus* concentration in garlic and its incidence in Argentina. *Plant Dis.* 86: 1085-1088.
- De Bokx A & Piron P G M 1977 Effect of temperature on symptom expression and relative virus concentration in potato plants infected with potato virus YN and YO. *Potato Res.* 20: 207-213.
- de Silva D P P, Jones P & Shaw M W 2002 Identification and transmission of *Piper yellow mottle virus* and *Cucumber mosaic virus* infecting black pepper (*Piper nigrum* L.) in Sri Lanka. *Plant Pathol.* 51: 537-545.
- Duarte M L R, Albuquerque F C & Chu E Y 2001 New diseases affecting black pepper crop in Brazil. *Int. Pepper Bull.* Apr-Dec, pp. 51-57.
- Hareesh P S & Bhat A I 2008 Detection and partial nucleotide sequence analysis of *Piper yellow mottle virus* infecting black pepper (*Piper nigrum* L.) in India. *Indian J. Virol.* 19: 160-167.
- Harper G, Osuji J O, Heslop-Harrison J S, & Hull R 1999. Integration of banana streak badnavirus into the *Musa* genome: Molecular and cytogenetic evidence. *Virology* 255: 207-213.
- Lockhart B E L, Angul K K, Jones P, Eng L, de Silva D P P, Olszewski N E, Lockhart N, Deema N & Sangalang J 1997 Identification of *Piper yellow mottle virus*, a mealybug transmitted badnavirus infecting *Piper* spp. in Southeast Asia. *European J. Plant Pathol.* 103: 303-311.
- Lockhart B E L, Menke J, Dahal G & Olszewski N E 2000 Characterisation and genomic analysis of *Tobacco vein clearing virus*, a plant pararetrovirus that is transmitted vertically and related to sequences integrated in the host genome. *J. Gen. Virol.* 81: 1579-1585.

## Effect of phosphorus and plant growth regulators on growth and yield of fenugreek (*Trigonella foenum-graecum* L.)

Ruchita Gour, I S Naruka, P P Singh, S S Rathore & R P S Shaktawat

Department of Plantation and Spice Crops  
College of Horticulture  
Jawaharlal Nehru Krishi Viswa Vidyalaya  
Mandsaur-458 001 Madhya Pradesh, India  
E mail: drisnaruka@yahoo.com

Received 18 September 2008; Revised 9 February 2009; Accepted 20 April 2009

### Abstract

A field experiment was conducted at Mandsaur (Madhya Pradesh) to find out the effect of phosphorus and plant growth regulators on growth and yield of fenugreek (*Trigonella foenum-graecum*). The results indicated that significantly higher growth and yield (17.62 q ha<sup>-1</sup>) were observed with application of 60 kg phosphorus ha<sup>-1</sup>. Foliar spray of naphthalene acetic acid (NAA) 20 ppm at 25 days after sowing (DAS) and 55 DAS resulted in significantly higher growth and seed yield (17.41 q ha<sup>-1</sup>). The highest benefit : cost ratio (4.20:1) was observed for the treatment, 60 kg phosphorus ha<sup>-1</sup> + NAA 20 ppm.

**Keywords:** fenugreek, growth, growth regulator, *Trigonella foenum-graecum*, yield.

The Malwa plateau in Madhya Pradesh contributes a major share of fenugreek production (*Trigonella foenum-graecum* L.) in the state. Plant growth and seed yield increased in fenugreek when phosphorus was applied @ 60 kg ha<sup>-1</sup> and sprayed with naphthalene acetic acid (NAA) @ 20 ppm (Purbey & Sen 2005). Spraying of plant growth regulators in other seed spice crops such as NAA in coriander (Pareek 1996), and gibberellic acid (GA<sub>3</sub>) in cumin (Omer *et. al.* 1997) have been reported to improve growth and seed yield. The present investigation was carried out to study the effect of phosphorus and plant growth regulators on growth and yield of fenugreek.

The experiment was conducted at Bahadri Farm, College of Horticulture, Mandsaur, (Madhya Pradesh) (23°45' to 24°13' N latitude and 74°44' to 75°18' E longitude at an elevation of 435 m above MSL) during the *rabi* season of 2007-08. The climate of this zone is sub-tropical and average rainfall per year is 544 mm of which 90% is received during July to September. The maximum and minimum temperature during the study period was 34.24°C and 5.27°C, respectively. The mean daily maximum and minimum relative humidity varied between 65.7% to 75.9%. The soil of the experimental site was loamy in texture, with low in available nitrogen and phosphorus and high in potassium status. The experiment was laid out in a factorial randomized block design

consisting of 12 treatment combinations with 3 replications. The 12 treatment combinations consisted 3 levels of phosphorus (20, 40 and 60 kg P<sub>2</sub>O<sub>5</sub> ha<sup>-1</sup>) and foliar application of 4 plant growth regulators namely, NAA 20 ppm, GA<sub>3</sub> 50 ppm, ethrel 75 ppm and distilled water spray. All the plant growth regulator treatments were sprayed at 25 and 55 days after sowing (DAS).

The seed was sown manually on 11<sup>th</sup> October 2007 in rows at a spacing of 30 cm, and the plants were thinned to 10 cm, 20 DAS and the crop was harvested on 6<sup>th</sup> March 2008. The variety RMt-1 was used for study. A uniform dose of 30 kg nitrogen ha<sup>-1</sup> was applied as urea and 25 kg potassium ha<sup>-1</sup> applied as muriate of potash at the time of field preparation and the different levels of phosphorus (20, 40 and 60 kg ha<sup>-1</sup>) was given as di-ammonium phosphate (DAP). The plant growth regulators prepared in desired stock solution were sprayed twice (at 25 DAS and 55 DAS). Observations were recorded on growth parameters namely, plant height, number of branches, fresh and dry weight of plant and yield and yield attributes.

#### Effect of phosphorus

The plant growth attributes of fenugreek were highly influenced by the application of different levels of phosphorus (Table 1). Application of 60 kg phosphorus ha<sup>-1</sup> resulted in significantly higher plant height (14.09, 43.28 and 77.42 cm), number of branches (4.17, 7.38 and 7.38), fresh weight of plant (88.63, 1129.07 and 3173.22 g per m<sup>2</sup>) and dry weight of plant (13.69, 202.28 and 967.70 g per m<sup>2</sup>) at 30 and 60 DAS and at harvest, respectively. The yield and yield attributes were also influenced significantly as a result of phosphorus application @ 60 kg ha<sup>-1</sup> (Table 2). The application of phosphorus @ 60 kg ha<sup>-1</sup> resulted in minimum number of days to complete 50% flowering (53.17 days). This treatment also resulted in maximum pods plant<sup>-1</sup> (29.96), number of seeds pod<sup>-1</sup> (17.47), test weight (14.99 g), biological yield (66.22

**Table 1.** Effect of phosphorus and plant growth regulators on growth and yield of fenugreek

Treatment	Growth parameters											
	Plant height (cm)			No. of branches plant <sup>-1</sup>			Fresh weight (g per m <sup>2</sup> )			Dry weight (g per m <sup>2</sup> )		
	30 DAS	60 DAS	At harvest	30 DAS	60 DAS	At harvest	30 DAS	60 DAS	At harvest	30 DAS	60 DAS	At harvest
<i>Phosphorus (kg ha<sup>-1</sup>)</i>												
20	12.34	36.83	69.24	3.49	5.71	5.71	67.27	1008.49	2859.70	8.85	150.23	763.09
40	13.59	41.92	75.27	4.07	6.77	6.77	80.80	1092.31	3047.52	11.37	183.56	826.16
60	14.09	43.28	77.42	4.17	7.38	7.38	88.63	1129.07	3173.22	13.69	202.28	967.70
SEm±	0.081	0.249	0.594	0.033	0.061	0.061	0.582	06.322	08.793	0.120	1.947	4.498
CD (P=0.05)	0.237	0.730	1.743	0.099	0.181	0.181	1.769	18.543	25.790	0.352	5.713	13.182
<i>Growth regulator</i>												
Water spray (Control)	13.07	38.34	71.69	3.70	6.23	6.23	75.63	1070.87	2972.01	10.43	165.15	844.03
20 ppm NAA	13.36	42.14	74.78	4.08	7.08	7.08	80.56	1097.37	3070.40	11.98	191.37	864.94
50 ppm GA <sup>3</sup>	13.96	42.97	76.75	3.99	6.62	6.62	80.17	1069.78	3054.50	11.69	187.36	852.05
75 ppm Ethrel	13.08	39.27	72.68	3.88	6.54	6.54	79.76	1068.48	3010.34	11.12	170.88	847.37
SEm±	0.093	0.287	0.686	0.039	0.071	0.071	0.671	07.300	10.154	0.138	2.249	5.193
CD (P=0.05)	0.274	0.834	2.013	0.114	0.209	0.209	1.969	21.411	29.780	0.406	6.597	15.233

DAS=Days after sowing; NAA=Naphthalene acetic acid; GA<sub>3</sub>=Gibberellic acid

**Table 2.** Effect of phosphorus and plant growth regulators on growth and yield of fenugreek

Treatment	Yield parameters							
	Days to 50% flowering	No. of pods plant <sup>-1</sup>	No. of seeds pod <sup>-1</sup>	Test weight (g)	Seed yield (q ha <sup>-1</sup> )	Straw yield (q ha <sup>-1</sup> )	Biological yield (q ha <sup>-1</sup> )	Harvest index (%)
<i>Phosphorus (kg ha<sup>-1</sup>)</i>								
20	53.07	28.37	15.40	12.97	14.90	45.52	60.42	24.87
40	53.48	29.53	16.51	14.02	16.65	47.73	64.88	25.71
60	53.17	29.96	14.47	14.99	17.62	48.60	66.22	26.68
SEm±	0.107	0.218	0.073	0.188	0.082	0.146	0.367	0.219
CD (P=0.05)	0.314	0.639	0.215	0.260	0.240	0.428	1.077	0.643
<i>Growth regulator</i>								
Water spray (Control)	56.46	24.87	15.18	13.11	15.17	42.54	57.71	26.52
20 ppm NAA	51.51	32.69	17.87	13.98	17.41	50.47	68.55	25.38
50 ppm GA <sup>3</sup>	49.41	29.81	17.36	14.96	16.57	48.28	64.81	25.62
75 ppm Ethrel	55.58	29.77	15.42	13.90	16.40	47.88	64.28	25.49
SEm±	0.123	0.251	0.084	0.102	0.094	0.168	0.424	0.253
CD (P=0.05)	0.363	0.738	0.248	0.301	0.277	0.494	1.244	0.743

DAS=Days after sowing; NAA=Naphthalene acetic acid; GA<sub>3</sub>=Gibberellic acid

q ha<sup>-1</sup>), seed yield (17.62 q ha<sup>-1</sup>), straw yield (48.60 q ha<sup>-1</sup>) and harvest index (26.68%). The findings of the present investigation are in conformity with those of Pareek & Gupta (1981) and Mandal & Maiti (1992) in fenugreek, who reported that plant height, number of branches plant<sup>-1</sup>, fresh weight of plant and dry weight of plant increased significantly with phosphorus fertilization.

#### *Effect of plant growth regulators*

The application of plant growth regulators significantly improved vegetative growth of fenugreek (Table 1). Among the different plant growth regulator treatments, GA<sup>3</sup> @ 50 ppm at 30 and 60 DAS and at harvest significantly increased plant height (13.96, 42.97 and 76.75 cm, respectively). Application of 20 ppm NAA significantly increased the number of branches at 30 and 60 DAS and at harvest (4.08, 7.08 and 7.08, respectively), fresh weight of plant (80.56, 1097.37 and 3070.40 g per m<sup>2</sup>) at 30 and 60 DAS and at harvest, respectively and dry weight of plant (11.98, 191.37 and 864.94 g per m<sup>2</sup>) at 30 and 60 DAS and at harvest, respectively. The yield and

yield attributes were also influenced significantly as a result of application of plant growth regulators (Table 2). Application of GA<sup>3</sup> @ 50 ppm at 25 DAS resulted in minimum days to complete 50% flowering (49.41 days) and test weight (14.96 g). Foliar application of NAA @ 20 ppm resulted in maximum pods plant<sup>-1</sup> (32.69), number of seeds pod<sup>-1</sup> (17.87), biological yield (68.55 q ha<sup>-1</sup>), seed yield (17.41 q ha<sup>-1</sup>) and straw yield (50.47 q ha<sup>-1</sup>). Significantly highest harvest index (26.52%) was recorded in water spray (control). The treatment combination 60 kg phosphorus ha<sup>-1</sup> + 20 ppm NAA resulted in the highest Benefit : Cost ratio of 4.20:1 (Table 3). El-Keltwai (2000) also reported that foliar application of GA<sub>3</sub> encourages plant growth and gave significantly highest plant height at all stages of growth in cumin.

The study indicated that application of 60 kg P<sub>2</sub>O<sub>5</sub> ha<sup>-1</sup> and foliar spray of NAA 20 ppm at 25 DAS and 55 DAS gave significantly higher growth and yield of fenugreek under loamy soil condition of Mandsaur (Madhya Pradesh).

**Table 3.** Economics of application of phosphorus and plant growth regulators in fenugreek

Treatment	Common expenditure (Rs ha <sup>-1</sup> )	Extra expenditure (Rs ha <sup>-1</sup> )	Total cost of cultivation (Rs ha <sup>-1</sup> )	Seed yield (q ha <sup>-1</sup> )	Straw yield (q ha <sup>-1</sup> )	Gross income (Rs ha <sup>-1</sup> )	Net income (Rs ha <sup>-1</sup> )	Benefit : Cost ratio
20 kg P <sub>2</sub> O <sub>5</sub> + Water spray	8692	426	9118	13.33	41.11	30160	21042	3.30:1
40 kg P <sub>2</sub> O <sub>5</sub> + Water spray	8692	852	9544	15.87	43.00	35016	25471	3.66:1
60 kg P <sub>2</sub> O <sub>5</sub> + Water spray	8692	1278	9970	16.26	43.52	35796	25825	3.59:1
20 kg P <sub>2</sub> O <sub>5</sub> + NAA 20 ppm	8692	456	9148	15.82	48.50	35751	26602	3.90:1
40 kg P <sub>2</sub> O <sub>5</sub> + NAA 20 ppm	8692	882	9574	17.38	50.89	38917	29343	4.06:1
60 kg P <sub>2</sub> O <sub>5</sub> + NAA 20 ppm	8692	1308	10000	19.05	52.04	42096	32095	4.20:1
20 kg P <sub>2</sub> O <sub>5</sub> + GA <sub>3</sub> 50 ppm	8692	3126	11818	15.08	46.47	34114	22296	2.88:1
40 kg P <sub>2</sub> O <sub>5</sub> + GA <sub>3</sub> 50 ppm	8692	3525	12217	16.99	48.55	37864	25647	3.09:1
60 kg P <sub>2</sub> O <sub>5</sub> + GA <sub>3</sub> 50 ppm	8692	3978	12670	17.64	49.70	39207	26236	3.09:1
20 kg P <sub>2</sub> O <sub>5</sub> + Ethrel 75 ppm	8692	1126	9818	15.07	46.01	34063	24245	3.46:1
40 kg P <sub>2</sub> O <sub>5</sub> + Ethrel 75 ppm	8692	1525	10217	16.62	48.48	37188	26970	3.63:1
60 kg P <sub>2</sub> O <sub>5</sub> + Ethrel 75 ppm	8692	1978	10670	17.37	49.16	38640	27969	3.62:1

NAA=Naphthalene acetic acid; GA<sub>3</sub>=Gibberellic acid

### Acknowledgement

The authors are grateful to Dr B S Baghel, Dean, College of Horticulture, Jawaharlal Nehru Krishi Vishwa Vidyalaya, Mandasaur (Madhya Pradesh), for providing necessary facilities during the course of investigation.

### References

- Balraj R, Kurdikeri M B & Revanappa 2002 Effect of growth regulators on growth and yield of chilli (*Capsicum annum* L.) at different pickings. Indian J. Hort. 59: 84-88.
- El-Keltawi N E, Barham I H, EL-Naggar A I & Rekaby A F 2000 Investigation on the response of cumin plants to certain horticultural agrochemicals. Influence of giberellic acid (GA<sub>3</sub>) on foliage growth, fruit yield, essential oil and chemical composition. Egyptian J. Hort. 274: 439-458.
- Mandal A R & Maiti R G 1992 Effect of nitrogen and phosphorus on growth, flowering and seed yield of fenugreek. Indian Agric. 56: 169-175.
- Omer E A, Nofal M A, Lashin S M & Haggag W M E 1997 Effect of some growth regulators on the growth parameters and soil content of cumin disease incidence under two type soils. Egyptian J. Hort. 24: 29-41.
- Pareek S K & Gupta R 1981 Effect of fertilizer application on seed yield and diosgenin content in fenugreek (*Trigonella foenum-graecum*). Indian J. Agric. Sci. 50: 746-749.
- Pareek N K 1996 Responses of coriander (*Coriandrum sativum* L.) to nitrogen and plant growth regulators. MSc Thesis, Rajasthan Agricultural University, Bikaner.
- Purbey S K & Sen N L 2005 Effect of bioinoculents and bioregulators on productivity and quality of fenugreek (*Trigonella foenum-graecum*). Indian J. Agric. Sci. 75: 608-611.



## Performance of cassia [*Cinnamomum cassia* (Blume)] genotypes under high rainfall and high altitude Kodagu region of Karnataka

R Senthil Kumar, D Prasath<sup>1</sup>, N K Leela<sup>1</sup>, B Krishnamoorthy<sup>1</sup> & M N Venugopal

*Indian Institute of Spices Research  
Cardamom Research Centre, Appangala  
Madikeri-571 201, Karnataka, India  
E-mail: senthil@spices.res.in*

Received 31 December 2008; Revised 22 April 2009; Accepted 23 May 2009

### Abstract

Fifteen cassia (*Cinnamomum aromaticum*) genotypes were evaluated for their performance for growth and yield characters under high rainfall and high altitude Kodagu region of Karnataka. Analysis of fresh and dry bark yield plant<sup>-1</sup> after 7 years of planting showed significant variation among the genotypes. Among the genotypes, IC370405 exhibited superiority in terms of dry weight (1083 g plant<sup>-1</sup>) and IC370408 was superior in quality.

**Keywords:** cassia, *Cinnamomum aromaticum*, Chinese cinnamon, yield.

Cassia (Chinese cinnamon) [*Cinnamomum cassia* (Blume)] (Family: Lauraceae) is often used as substitute for cinnamon. Cassia trees growing at 180-300 m above MSL yield better quality bark with higher volatile oil content, whereas, those growing at 90-150 m above MSL yield a relatively thick, coarse bark, somewhat deficient in flavour, containing 1.0% to 1.2% volatile oil (Pruthi 1992). Hence, the present experiment was undertaken to evaluate the performance of cassia genotypes at the high rainfall (2000-3000 mm year<sup>-1</sup>) and high altitude (1000 m above MSL) Kodagu region of Karnataka.

Fifteen cassia genotypes namely, IC370401, IC370404, IC370405, IC370406, IC370408, IC370410, IC370414, IC370415, IC370418, IC370423, IC370424, IC370425, IC370427,

IC370428, and IC370429 were planted as a monocrop in 2001 at the Cardamom Research Centre, Appangala (Kodagu District, Karnataka) (12°26'N latitude and 75°45'E longitude). The experiment was conducted in a randomized block design with eight replications. The vegetatively propagated genotypes (cuttings) consisted of 15 accessions as treatments (1 plant treatment<sup>-1</sup>) and planted in a spacing of 2 m × 2 m. The first harvest (one time) was performed after 7 years of planting in November, and observations were recorded on various characters namely, plant height, number of branches, girth, leaf length, leaf breadth, canopy size, fresh bark yield and dry bark yield. The data was statistically analyzed by the method of Panse & Sukhatme (1995).

<sup>1</sup>Indian Institute of Spices Research, Calicut-673 012, Kerala, India.

**Table 1.** Morphological, yield and bark oil characters of cassia genotypes

Acc. No.	Plant height (cm)	No. of branches	Girth at 120 cm (cm)	Leaf length* (cm)	Leaf breadth* (cm)	Canopy (sq. m)	Bark yield (g plant <sup>-1</sup> )		Oil content (%)	Oleoresin content (%)	Cinnamaldehyde content (%)	
							Fresh	Dry Recovery (%)				
IC370401	444.30	22.00	19.25	20.13	5.65	6.26	1268.00	512.50	40.42	3.06	14.02	74.18
IC370404	392.50	16.33	14.50	23.53	6.03	4.73	1216.60	416.67	34.25	3.26	11.37	66.15
IC370405	410.00	16.50	17.58	22.93	5.76	3.84	2380.00	1083.30	45.50	2.37	09.97	84.20
IC370406	411.40	18.42	16.42	20.77	6.26	5.00	1285.00	450.00	35.02	1.23	11.92	67.01
IC370408	465.00	21.00	17.71	20.34	5.95	6.85	2082.50	850.00	40.82	3.71	14.14	81.58
IC370410	407.14	20.85	16.57	20.23	5.74	3.39	1613.80	623.75	38.65	2.63	12.05	69.62
IC370414	387.00	19.80	15.20	19.62	5.68	4.24	1076.30	450.00	41.81	2.65	07.52	65.07
IC370415	416.25	19.36	18.00	20.60	6.08	5.73	2040.00	608.34	29.82	3.12	10.76	78.77
IC370418	407.14	15.86	15.80	19.63	5.73	4.24	1971.60	1000.00	50.72	1.41	10.28	75.60
IC370423	395.00	20.17	19.50	21.77	5.90	4.47	1233.30	450.00	36.49	1.20	08.87	89.63
IC370424	340.71	13.43	14.86	19.63	5.82	4.31	1438.80	583.30	40.54	2.52	08.58	83.71
IC370425	347.14	16.43	14.43	20.40	5.91	3.70	1163.30	400.00	34.38	2.56	11.58	77.93
IC370427	399.30	21.83	18.00	20.47	6.02	3.98	2150.00	716.67	33.33	3.28	09.48	75.45
IC370428	375.70	16.29	17.86	20.23	5.99	5.14	2583.00	960.00	37.16	3.37	09.33	73.39
IC370429	369.38	18.63	16.88	21.27	6.19	3.75	1405.00	750.00	53.38	1.58	09.02	73.40
Mean	398.12	18.46	16.84	20.70	5.89	4.67	1645.10	626.25				
SD	57.23	03.01	02.66	01.85	0.68	1.25	499.51	163.89				
CV	28.75	32.71	31.61	17.88	23.20	53.73	60.73	52.34				
CD (P=0.01)	NS	NS	NS	NS	NS	NS	1312.20	430.53				

\*3<sup>rd</sup> leaf

Dried bark of cassia (20 g) was powdered and hydro distilled for 3 h using Cleavenger trap to yield essential oil (AOAC 1975). The separated oil was collected and traces of moisture were removed using anhydrous sodium sulphate and the oil content was calculated. The constituents of the oil were analyzed using gas chromatography-flame ionization detector (GC-FID). GC-FID analysis of the oil was conducted on a Shimadzu gas chromatograph equipped with FID and RTx-5 column. Oven temperature was programmed from 70°C to 210°C at the rate of 5°C min<sup>-1</sup>. FID temperature and injection port temperature were maintained at 300°C. The chief constituent of the oil was identified by comparing the retention time with that of cinnamaldehyde purchased from Sigma Chemicals. Powdered bark (10 g) was packed in a column, 60 ml acetone (AR grade) was added to it and kept overnight. The extract was drained into a weighed beaker and the column containing the residue was re-extracted twice with acetone (50 ml each) at ambient conditions. The combined extract was evaporated to dryness to constant weight. From the difference in weight, the oleoresin content was calculated and expressed as percentage (AOAC 1975).

There was no significant variation for vegetative characters among the 15 genotypes under study (Table 1). Both fresh and dry bark yield characters showed more than 50% variation among the different genotypes. The highest fresh yield was recorded in IC370428 (2583 g plant<sup>-1</sup>), which was on par with IC370405 (2380 g plant<sup>-1</sup>) and IC370427 (2150 g plant<sup>-1</sup>). The highest dry recovery was recorded in IC370405 (1083 g plant<sup>-1</sup>) which was on par with IC370418 (1000 g plant<sup>-1</sup>) and IC370428 (960 g plant<sup>-1</sup>). Maximum per cent

dry recovery was recorded in IC370418 (50.72%).

The essential oil content varied from 1.20% (IC370423) to 3.71% (IC370408). The oleoresin content varied from 7.52% (IC370414) to 14.14% (IC370408). The highest cinnamaldehyde content was recorded in IC370423 (89.63%) followed by IC370405 (84.20%). Maximum bark oil content of 4.9% and cinnamaldehyde content of 90.5% were recorded in cassia at Peruvannamuzhi, Kerala (IISR 2007). The superior genotypes for different characters, can be used for developing genotypes for cultivation in high rainfall and high altitude Kodagu region of Karnataka.

#### Acknowledgment

The authors are thankful to Director, Indian Institute of Spices Research, Calicut, for providing facilities. Dr. S J Ankegowda, Senior Scientist and Dr. C N Biju, Scientist, Cardamom Research Centre, Appangala are acknowledged for their support.

#### References

- AOAC (Association of Official Analytical Chemists) 1975 Official Methods of Analysis. Association of Official Analytical Chemists, 10<sup>th</sup> Edn. Washington DC.
- IISR (Indian Institute of Spices Research) 2007 Annual Report 2006-07. Indian Institute of Spices Research, Calicut.
- Panase V G & Sukhatme P V 1995 Statistical Methods for Agricultural Workers. Indian Council of Agricultural Research, New Delhi.
- Pruthi J S 1992 Spices and Condiments, IV<sup>th</sup> Edn. National Book Trust, New Delhi.

## Growth and yield of turmeric (*Curcuma longa* L.) intercropped in poplar (*Populus deltoides* Bartram ex Marshall) plantation at Punjab

B S Gill, A Singh<sup>1</sup>, Devinder Singh, N Gandhi & Jaspreet Kaur

Department of Agronomy  
Punjab Agricultural University  
Ludhiana-141 004, Punjab, India

Received 12 May 2008; Revised 5 November 2008; Accepted 20 April 2009

### Abstract

The effect of planting dates and methods of planting of turmeric (*Curcuma longa*) intercropped in poplar (clone *Udai*) (*Populus deltoides*) plantation was studied at Ludhiana (Punjab, India). The treatments consisted of three planting dates namely, 20<sup>th</sup> March, 20<sup>th</sup> April and 20<sup>th</sup> May and two methods of planting, namely, ridge and flat method (60 cm x 10 cm) in poplar plantation. The study revealed that in first year of plantation (2004-05), a fresh rhizome yield of 9.96 t ha<sup>-1</sup> was obtained in 20<sup>th</sup> April planting which was significantly more than that of 20<sup>th</sup> May planting (9.45 t ha<sup>-1</sup>). During 2005-06, a fresh rhizome yield of 8.15, 11.61 and 13.95 t ha<sup>-1</sup> was produced in 20<sup>th</sup> March, 20<sup>th</sup> April and 20<sup>th</sup> May planting dates, respectively. During 2006-07, the yields were lower and the differences in fresh rhizome yield due to 20<sup>th</sup> May (6.33 t ha<sup>-1</sup>) and 20<sup>th</sup> April (6.43 t ha<sup>-1</sup>) planting were not significant but both the planting dates were significantly better than 20<sup>th</sup> March (5.6 t ha<sup>-1</sup>) planting. The ridge method of planting produced 8.0%, 11.0% and 9.8% more yield which was significantly higher than flat method of planting during 2004-05, 2005-06 and 2006-07, respectively.

**Keywords:** *Curcuma longa*, growth and yield, intercropping, planting pattern, poplar, *Populus deltoides*, turmeric.

Information on the performance of different crops in compact poplar (*Populus deltoides* Bartram ex Marshall) plantation in Punjab is not available. An earlier study revealed that fresh rhizome yield of turmeric (*Curcuma longa* L.) decreased significantly as the age of poplar increases (Gill *et al.* 2004). Keeping this in view, a trial was undertaken at Ludhiana to study the effect of different planting dates

and methods on the growth and yield of turmeric in compact poplar plantation.

The poplar (clone *Udai*) plantation was established during March 2004 at 5 m x 4 m spacing at Research Farm, Department of Agronomy, Punjab Agricultural University, Ludhiana (Punjab) in an area of about 0.7 ha. The soil of experimental site was normal with respect to pH and EC, low in organic

<sup>1</sup>Department of Forestry and Natural Resources, Punjab Agricultural University, Ludhiana-141 004, Punjab, India.

carbon and available nitrogen and medium in available P and K in the plough layer and the contents of these nutrients in soil decreased with increase in depth up to 90 cm of soil profile. The bulk density and particle density increased with increase in depth of plough layer.

Turmeric (var. Rajapuri) was planted in the poplar plantation during first, second and third year of plantation. The treatments consisted of three planting dates of turmeric namely, 20<sup>th</sup> March, 20<sup>th</sup> April and 20<sup>th</sup> May and two methods of planting of turmeric namely, ridge and flat method. The crop could not be planted on 20<sup>th</sup> March during 2004-05 but was only planted during 10<sup>th</sup> April since the poplar plantation was established during the last week of March. But during 2005-06 and 2006-07, turmeric was planted as per the treatments. Farmyard manure @ 30 t ha<sup>-1</sup> was applied at the time of field preparation. The crop was planted both in ridge and flat methods at 60 cm x 10 cm. Two hoeings were given and earthing up was done after each hoeing to keep the crop free from weeds. Turmeric was raised as irrigated crop and the crop was harvested during the first week of February. Plant height, number of leaves plant<sup>-1</sup>, number of rhizomes plant<sup>-1</sup> and weight rhizome<sup>-1</sup> were recorded during harvest. Analysis of variance was done following factorial experiments in RBD with three replications.

#### *Effect of planting date*

During 2004-05, the effect of planting dates on fresh rhizome yield of turmeric was significant (Table 1). The 20<sup>th</sup> April planting date produced fresh rhizome yield of 9.96 t ha<sup>-1</sup> which was significantly more than that of 20<sup>th</sup> May planting date (9.45 t ha<sup>-1</sup>). During 2005-06, each delay in planting date increased the fresh rhizome yield significantly and fresh rhizome yields of 8.15, 11.61 and 13.95 t ha<sup>-1</sup> were produced in 20<sup>th</sup> March, 20<sup>th</sup> April and 20<sup>th</sup> May planting dates, respectively. During third year, fresh turmeric rhizome yields of 5.60, 6.43 and 6.33 t ha<sup>-1</sup> were produced in 20<sup>th</sup> March, 20<sup>th</sup> April and 20<sup>th</sup> May planting

dates, respectively. The differences in fresh rhizome yield due to 20<sup>th</sup> May and 20<sup>th</sup> April planting dates were not significant but both planting dates were significantly better than 20<sup>th</sup> March planting date. The fresh turmeric yield decreased during the third year in poplar plantation which might be attributed to increased poplar growth with age.

Different planting dates of turmeric in poplar plantation did not influence the growth and yield attributing characters of turmeric (plant height, number of leaves plant<sup>-1</sup>, number of rhizomes plant<sup>-1</sup> and weight of rhizome) recorded at harvest during 2004-05 (Table 1). But during 2005-06, plant height increased significantly with each delay in planting and maximum plant height was recorded in turmeric planted on 20<sup>th</sup> May. The differences in the number of rhizomes plant<sup>-1</sup> of 20<sup>th</sup> May (7.9) and 20<sup>th</sup> April (7.8) were not significant but both treatments were significantly better than 20<sup>th</sup> March (6.5) planting date of turmeric. A similar trend was observed in the weight of rhizome though the differences were not significant. Different planting dates did not influence significantly the number of leaves plant<sup>-1</sup>. During 2006-07, plant height increased with each delay in planting date and maximum plant height was recorded in 20<sup>th</sup> May planting date which was significantly better than 20<sup>th</sup> March planting date but statistically on par with 20<sup>th</sup> April planting date. The differences in weight of rhizomes per plant due to 20<sup>th</sup> May and 20<sup>th</sup> April planting dates were not significant but both treatments were significantly superior to 20<sup>th</sup> March planting date. Different planting dates of turmeric did not influence significantly the number of leaves and number of rhizomes plant<sup>-1</sup>.

#### **Effect of planting method**

The effect of planting method of turmeric on fresh rhizome yield in poplar plantation was significant. The ridge method of planting turmeric produced significantly higher yield than flat method of planting. The ridge method of planting produced fresh rhizome yields of 10.08, 11.82 and 6.40 t ha<sup>-1</sup> as

**Table 1.** Growth and yield of turmeric as influenced by planting dates and methods in poplar plantation

Treatment	Plant height (cm)	No. of leaves plant <sup>-1</sup>	No. of rhizomes plant <sup>-1</sup>	Weight rhizome <sup>-1</sup>	Fresh yield (t ha <sup>-1</sup> )
2004-05					
<i>Planting date</i>					
20 April	42.09	10.07	8.35	7.80	9.96
20 May	42.70	10.00	8.61	7.24	9.45
CD (P=0.05)	NS	NS	NS	NS	0.48
<i>Planting method</i>					
Ridge	43.50	10.25	8.22	7.83	10.08
Flat	41.29	9.82	8.74	7.21	9.33
CD (P=0.05)	2.02	NS	NS	NS	0.48
2005-06					
<i>Planting date</i>					
20 March	81.6	8.5	6.5	18.14	8.15
20 April	92.3	7.8	7.8	15.68	11.61
20 May	110.8	8.5	7.9	16.68	13.95
CD (P=0.05)	6.0	NS	1.1	NS	0.69
<i>Planting method</i>					
Ridge	98.6	8.3	7.7	16.70	11.82
Flat	91.2	8.2	7.1	16.81	10.64
CD (P=0.05)	4.9	NS	NS	NS	0.57
2006-07					
<i>Planting date</i>					
20 March	39.67	7.8	12.9	3.54	5.60
20 April	42.26	7.7	11.5	4.50	6.43
20 May	47.06	8.1	11.5	4.95	6.33
CD (P=0.05)	5.80	NS	NS	0.95	0.51
<i>Planting method</i>					
Ridge	46.08	8.0	13.2	4.20	6.40
Flat	41.24	7.7	10.7	4.40	5.83
CD (P=0.05)	4.80	NS	1.6	NS	0.42

compared to 9.33, 10.64 and 5.83 t ha<sup>-1</sup> in flat method of planting during 2004-05, 2005-06 and 2006-07, respectively (Table 1).

The effect of planting method of turmeric on plant height in poplar was significant. The plant height of ridge planted crop was significantly higher than flat planted crop during all the three years of study. A similar trend was recorded in the number of rhizomes plant<sup>-1</sup> in all the years of study though the differences were significant during 2006-07 only. The number of leaves plant<sup>-1</sup> was also higher in ridge method of planting than flat method though the differences were not significant. The increased turmeric plant height, higher number of leaves plant<sup>-1</sup> and

more number of rhizomes plant<sup>-1</sup> in this planting method resulted in higher turmeric yield in ridge method of planting than flat method. The study indicated that turmeric can be grown in poplar plantation up to 3 years though the yield decreases in the third year and crop should be planted on ridges in the third week of April in the first year whereas in the second and third years, it should be planted in the third week of May.

## References

- Gill B S, Singh A, Singh Gursharan & Saini S S 2004 Effect of age of poplar on growth and yield of turmeric (*Curcuma longa* L.) intercrop. Indian J. For. 7: 313-315.

## Spices Bibliography-2008 (Part I)

C K Sushama Devi

*Indian Institute of Spices Research*  
Calicut-673 012, Kerala, India  
E-mail: library@spices.res.in

### Spices-General

- Ciesarova Z, Suhaj M & Horvathova J 2008 Correlation between acrylamide contents and antioxidant capacities of spice extracts in a model potato matrix. *Journal of Food and Nutrition Research* 47 (1): 1-5.
- Dearlove R P, Greenspan P, Hartle D K, Swanson R B & Hargrove J L 2008 Inhibition of protein glycation by extracts of culinary herbs and spices. *Journal of Medicinal Food* 11 (2): 275-281.
- Galego L, Almeida V, Goncalves V, Costa M, Monteiro I, Matos F & Miguel G 2008 Antioxidant activity of the essential oils of *Thymbra capitata*, *Origanum vulgare*, *Thymus mastichina* and *Calamintha baetica*. *Acta Horticulturae* 765: 325-333.
- Janjai S, Srisittipokakun N & Bala B K 2008 Experimental and modelling performances of a roof-integrated solar drying system for drying herbs and spices. *Energy Oxford* 33 (1): 91-103.
- Jaw Ming C, Chiang Wen & Chiang Lien Chai 2008 Immunomodulatory activities of common vegetables and spices of Umbelliferae and its related coumarins and flavonoids. *Food Chemistry* 106 (3): 944-950.
- Kaefer C M & Milner J A 2008 The role of herbs and spices in cancer prevention. *Journal of Nutritional Biochemistry* 19 (6): 347-361.
- Kayode J & Ogunleye T O 2008 Checklist and status of plant species used as spices in Kaduna State of Nigeria. *Research Journal of Botany* 3 (1): 35-40.
- Krishnaswamy K 2008 Traditional Indian spices and their health significance. *Asia Pacific Journal of Clinical Nutrition* 17 (Supplement 1): 265-268.
- Lazurca D & Lazurca M 2008 Professional associations for medicinal herbs and spices. *Hop and Medicinal Plants* 16 (1/2): 90-93.
- Mustorp S, Engdahl Axelsson C, Svensson U & Holck A 2008 Detection of celery (*Apium graveolens*), mustard (*Sinapis alba*, *Brassica juncea*, *Brassica nigra*) and sesame (*Sesamum indicum*) in food by real-time PCR. *European Food Research and Technology* 226 (4): 771-778.
- Ohr L M 2008 Adding spice to life. *Food Technology Chicago* 62 (1): 59-62.
- Rema J, Mathew P A & Krishnamoorthy B 2008 Vegetative propagation of allspice. *Indian Journal of Horticulture* 65 (1): 65-68.
- Takeda J, Silva S de, Muthuraman P, Rahman S M & Kawet L 2008 Spices in Sri Lanka, India and Bangladesh with special reference to the usages and consumptions. *Bulletin of the Faculty of Agriculture, Saga University* 93: 1-25.

Tian T, Liu H Y & Koike S T 2008 First report of *Apium virus* Y on cilantro, celery, and parsley in California. *Plant Disease* 92 (8): 1254.

Urabe Y, Minai Y, Haga M, Sugita K Y, Ishiguro A & Hara K Y 2008 Survival of *Salmonella* in spices and growth in cooked food. *Shokuhin Eiseigaku Zasshi (Journal of the Food Hygienic Society of Japan)* 49 (2): 70-75.

#### **Basil (*Ocimum basilicum* L.)**

Chalchat J C & Ozcan M M 2008 Comparative essential oil composition of flowers, leaves and stems of basil (*Ocimum basilicum* L.) used as herb. *Food Chemistry* 110 (2): 501-503.

Fandohan P, Gnonlonfin B, Laleye A, Gbenou J D, Darboux R & Moudachirou M 2008 Toxicity and gastric tolerance of essential oils from *Cymbopogon citratus*, *Ocimum gratissimum* and *Ocimum basilicum* in Wistar rats. *Food and Chemical Toxicology* 46 (7): 2493-2497.

Hasan A, Arvind Kumar, Promod Kumar & Zafar Abbas 2008 Effect of nitrogen levels on growth herb yield and essential oil content of *Ocimum basilicum* var. Gabratum (sweet basil). *Indian Journal of Tropical Biodiversity* 15 (2): 140-143.

Itoh K, Nakamura K, Utsukihara T, Sakamaki H & Horiuchi C A 2008 Stereoselective oxidation of racemic 1-arylethanol by basil cultured cells of *Ocimum basilicum* cv. Purpurascens. *Biotechnology Letters* 30 (5): 951-954.

Jocic M M, Stevanovic Z D, Jaric S & Urevic L 2008 Nectar secretion in basil (*Ocimum basilicum* L.) grown in different soil conditions. *Journal of Apicultural Research* 47 (1): 89-90.

Larios L F, Ruiz Espinoza F H, Garcia Hernandez J L, Murillo Amador B, Gonzalez Ocampo H A, Beltran Morales F A & Fraga Palomino H 2008 Analysis of agronomic variables of *Ocimum basilicum* L. under alternative tillage systems and standard organic practices. *Tropical and Subtropical Agroecosystems* 8 (2): 157-163.

Marinkovic B, Crnobarac J, Dusan A, Hlaek K, Stanisic J, Dragoslav Vlad M & Pajic V 2008 Effect of cutting height on basil yield. *Hop and Medicinal Plants* 16 (1/2): 110-113.

Sahu M, Rastogi N K & Anjali Shrivastava 2008 Genetic variability, heritability and scope of improvement for yield components in Basil (*Ocimum* spp.). *International Journal of Plant Sciences* 3 (1): 217-219.

Sundaram S & Singh S K 2008 Axillary shoot multiplication from nodal explants of the sweet basil *Ocimum basilicum* L. *Proceedings of the National Academy of Sciences India Section B, Biological Sciences* 78 (1): 72-76.

XianMin C, Alderson P G & Wright C J 2008 Solar irradiance level alters the growth of basil (*Ocimum basilicum* L.) and its content of volatile oils. *Environmental and Experimental Botany* 63 (1/3): 216-223.

Xie Z Z, Kapteyn J & Gang D R 2008 A systems biology investigation of the MEP/terpenoid and shikimate/phenylpropanoid pathways points to multiple levels of metabolic control in sweet basil glandular trichomes. *Plant Journal* 54 (3): 349-361.

Zheljazkov V D, Callahan A & Cantrell C L 2008 Yield and oil composition of 38 basil (*Ocimum basilicum* L.) accessions grown in Mississippi. *Journal of Agricultural and Food Chemistry* 56 (1): 241-245.

Zheljazkov V D, Cantrell C L, Tekwani B & Khan S I 2008 Content, composition, and bioactivity of the essential oils of three basil genotypes as a function of harvesting. *Journal of Agricultural and Food Chemistry* 56 (2): 380-385.

Zuccarini P & Okurowska P 2008 Effects of mycorrhizal colonization and fertilization on growth and photosynthesis of sweet basil under salt stress. *Journal of Plant Nutrition* 31 (3): 497-513.

#### **Black pepper (*Piper nigrum* L.)**

Emer Z, Akbas M Y & Ozdemir M 2008 Bactericidal activity of ozone against *Escherichia coli* in whole and ground black peppers. *Journal of Food Protection* 71 (5): 914-917.



- Kizhakkayil J & Thomas E & Sasikumar B 2008 Molecular characterization of traded black pepper (*Piper nigrum* L.) from India, Indonesia, Vietnam and Malaysia. *Indian Journal of Biotechnology* 7 (2): 210-213.
- Moura E F, Menezes I C de & Lemos O F de 2008 Cytokinin concentrations and activated charcoal on black pepper micropropagation. *Ciencia Rural* 38 (1): 72-76.
- Parthasarathy U, Asish G R, Zachariah T J, Saji K V, George J K, Jayarajan K, Mathew P A & Parthasarathy V A 2008 Spatial influence on the important volatile oils of *Piper nigrum* leaves. *Current Science* 94 (12): 1632-1635.
- Siju S, Bhat A I & Hareesh P S 2008 Identification and characterization of a *Badnavirus* infecting betel vine and Indian long pepper. *Journal of Plant Biochemistry and Biotechnology* 17 (1): 73-76.
- Tran H, Kruijt M & Raaijmakers J M 2008 Diversity and activity of biosurfactant producing *Pseudomonas* in the rhizosphere of black pepper in Vietnam. *Journal of Applied Microbiology* 104 (3): 839-851.
- Truong N V, Burgess L W & Liew E C Y 2008 Prevalence and etiology of *Phytophthora* foot rot of black pepper in Vietnam. *Australasian Plant Pathology* 37 (5): 431-442.
- Vanaja T, Neema V P, Mammooty K P & Rajeshkumar R 2008 Development of a promising interspecific hybrid in black pepper (*Piper nigrum* L.) for *Phytophthora* foot rot resistance. *Euphytica* 161 (3): 437-445.
- Xiao W, Yuan Jin Peng, Geng Yan Ling, Li Fu Wei, Wang Dai Jie & Liu Jian Hua 2008 Preparative separation and purification of piperine from *Piper nigrum* Linn. by high speed counter current chromatography. *Chemistry and Industry of Forest Products* 28 (2): 6-10.

### **Cardamom (*Elettaria cardamomum* Maton)**

- Ankegowda S J 2008 Optimum leaf stage for transplanting small cardamom seedlings from primary nursery to polybag nursery. *Indian Journal of Horticulture* 65 (2): 252-254.
- Bhai R S & Sarma Y R 2008 Spatial distribution pattern of *Phytophthora* inoculum in cardamom soils. *Indian Phytopathology* 61 (1): 95-98.
- Leela N K, Prasath D & Venugopal M N 2008 Essential oil composition of selected cardamom genotypes at different maturity levels. *Indian Journal of Horticulture* 65 (3): 366-369.
- Parthasarathy U, Prasath D, Jayarajan K & Parthasarathy V A 2008 Multivariate analysis of cardamom in Karnataka. *Indian Journal of Horticulture* 65 (2): 196-200.
- Sharma G, Sharma R & Sharma E 2008 Influence of stand age on nutrient and energy release through decomposition in alder-cardamom agroforestry systems of the eastern Himalayas. *Ecological Research* 23 (1): 99-106.

### **Celery (*Apium graveolens* L.)**

- Bounds R S & Hausbeck M K 2008 Evaluation of disease thresholds and predictors for managing late blight in celery. *Plant Disease* 92 (3): 438-444.
- Carraro L, Ferrini F, Martini M, Ermacora P & Loi N 2008 A serious epidemic of stolbur on celery. *Journal of Plant Pathology* 90 (1): 131-135.
- Chaves B, Neve S de, Boeckx P, Dupont R, Cleemput, O van & Hofman G 2008 Manipulating the N release from <sup>15</sup>N labelled celery residues by using straw and vinasses in Flanders (Belgium). *Agriculture, Ecosystems and Environment* 123 (1/3): 151-160.
- Engindeniz S 2008 Economic analysis of agrochemical use for weed control in field grown celery: a case study for Turkey. *Crop Protection* 27 (3/5): 377-384.
- Madrid R, Lopez M D, Barba E M, Gomez P & Arts F 2008 Influence of nitrate fertilizer on macronutrient contents of celery plants on soil less culture. *Journal of Plant Nutrition* 31 (1): 55-67.

- Mustorp S, Engdahl Axelsson C, Svensson U & Holck A 2008 Detection of celery (*Apium graveolens*), mustard (*Sinapis alba*, *Brassica juncea*, *Brassica nigra*) and sesame (*Sesamum indicum*) in food by real time PCR. *European Food Research and Technology* 226 (4): 771-778.
- Nadwodnik J & Lohaus G 2008 Subcellular concentrations of sugar alcohols and sugars in relation to phloem translocation in *Plantago major*, *Plantago maritima*, *Prunus persica* and *Apium graveolens*. *Planta* 227 (5): 1079-1089.
- Raid R N, Pernezny K, Havranek N, Sanchez J & Saddler B 2008 Weather based forecasting systems reduce fungicide use for early blight of celery. *Crop Protection* 27 (3/5): 396-402.
- Rizzo V & Muratore G 2008 Effects of packaging on shelf life of fresh celery. *Journal of Food Engineering* 90 (1): 124-128.
- Shen Wei Shou, Lin Xian Gui, Zhang Hua Yong, Yin Rui, Duan Zeng Qiang & Shi Wei Ming 2008 Numbers of *Fusarium oxysporum* in different greenhouse vegetable soils. *Acta Pedologica Sinica* 45 (1): 137-142.
- Souri E, Amin G, Farsam H & Tehrani M B 2008 Screening of antioxidant activity and phenolic content of 24 medicinal plant extracts. *DARU Journal of Faculty of Pharmacy, Tehran University of Medical Sciences* 16 (2): 83-87.
- Tian T, Liu H Y & Koike S T 2008 First report of *Apium virus Y* on cilantro, celery, and parsley in California. *Plant Disease* 92 (8): 1254.
- Yan S C, Liu H J, Mohr T J, Jenrette J, Chiodini R, Zaccardelli M, Setubal J C & Vinatzer B A 2008 Role of recombination in the evolution of the model plant pathogen *Pseudomonas syringae* pv. tomato DC3000, a very atypical tomato strain. *Applied and Environmental Microbiology* 74 (10): 3171-3181.
- Zhang Yan, Liu J W, Zheng W J, Wang Lei, Zhang H Y, Fang G Z & Wang Shuo 2008 Optimization and validation of enzyme-linked immunosorbent assay for the determination of endosulfan residues in food samples. *Journal of Environmental Science and Health Part B, Pesticides, Food Contaminants, and Agricultural Wastes* 43 (2): 127-133.

### Chilli (*Capsicum spp.*)

- Albaho M, Thomas B & Christopher A 2008 Evaluation of hydroponic techniques on growth and productivity of greenhouse grown bell pepper and strawberry. *International Journal of Vegetable Science* 14 (1): 23-40.
- Aloni B, Karni L, Deventurero G, Turhan E & Aktas H 2008 Changes in ascorbic acid concentration, ascorbate oxidase activity, and apoplastic pH in relation to fruit development in pepper (*Capsicum annuum* L.) and the occurrence of blossom end rot. *Journal of Horticultural Science and Biotechnology* 83 (1): 100-105.
- Arora N, Manpreet Kaur, Amandeep Kaur & Daljeet Singh 2008 Variability in leaf characteristics of chilli (*Capsicum annuum* L.) genotypes in relation to resistance to *Cucumber mosaic virus*. *Environment and Ecology* 26 (1): 199-202.
- Ayuso M C, Bernalte M J, Lozano M, Garcia M I, Montero de Espinosa V, Perez M M, Hernandez M T & Somogyi N 2008 Quality characteristics of different red pepper cultivars (*Capsicum annuum* L.) for hot paprika production. *European Food Research and Technology* 227 (2): 557-563.
- Baheza E C, Cruz Fernandez F, Hernandez Alvarez M I, Peraza Luna F, Aguado Santacruz G A, Serratos Arevalo J C, Posos Ponce P, Gonzalez Chavira M M, Torres Pacheco I, Guevara Olvera L & Guevara Gonzalez R G 2008 A new lea gene is induced during osmopriming of *Capsicum annuum* L. seeds. *International Journal of Botany* 4 (1): 77-84.
- Barrera J A, Hernandez M S, Melgarejo L M, Martinez O & Fernandez Trujillo J P 2008 Physiological behavior and quality traits during fruit growth and ripening of four Amazonic hot pepper accessions. *Journal of the Science of Food and Agriculture* 88 (5): 847-857.
- Castro S M, Saraiva J A, Lopes da Silva J A, Delgadillo I, Loey A van, Chantal Smout & Hendrickx M 2008 Effect of thermal blanching and of high pressure treatments on sweet green and red bell pepper fruits (*Capsicum annuum* L.). *Food Chemistry* 107 (4): 1436-1449.

- Chaouachi M, El Malki R, Berard A, Romaniuk M, Laval V, Brunel D & Bertheau Y 2008 Development of a real-time PCR method for the differential detection and quantification of four solanaceae in GMO analysis: potato (*Solanum tuberosum*), tomato (*Solanum lycopersicum*), eggplant (*Solanum melongena*), and pepper (*Capsicum annuum*). *Journal of Agricultural and Food Chemistry* 56 (6): 1818-1828.
- Chattopadhyay B, Singh A K, Yadav T, Fauquet C M, Sarin N B & Chakraborty S 2008 Infectivity of the cloned components of a *Begomovirus*: DNA beta complex causing chilli leaf curl disease in India. *Archives of Virology* 153 (3): 533-539.
- Choong Je M 2008 Cellulase elicitor induced accumulation of capsidiol in *Capsicum annuum* L. suspension cultures. *Biotechnology Letters* 30 (5): 961-965.
- Colla G, Roupheal Y, Cardarelli M, Temperini O, Rea E, Salerno A & Pierandrei F 2008 Influence of grafting on yield and fruit quality of pepper (*Capsicum annuum* L.) grown under greenhouse conditions. *Acta Horticulturae* 782: 359-363.
- Deb P, Datta S & Paul P K 2008 Studies on the performance of chilli genotypes under Terai zone of West Bengal. *Indian Journal of Horticulture* 65 (3): 353-355.
- De Yi G, Lai Yan, Lin Ming, Wang Yu Na, Cao Lei & He Shui Lin 2008 Construction of cDNA library with RNA isolated from leaves of *Capsicum annuum* challenged with UV and detection of cDNA of several genes. *Journal of Fujian Agriculture and Forestry* 37 (3): 275-279.
- Dong K U, Moon H J & Choon P K 2008 Effect of furrow-mulching on *Phytophthora* blight incidence and soil microbial ecology in the red pepper (*Capsicum annuum* L.) field. *Korean Journal of Horticultural Science and Technology* 26 (1): 7-13.
- Dutonde S N, Bhalekar M N, Patil B T, Kshirsagar D B & Dhumal S S 2008 Genetic diversity in chilli (*Capsicum annuum* L.). *Agricultural Science Digest* 28 (1): 45-47.
- Erard P & Odet J 2008 Advantages and limits of grafting on bell pepper. *Infos Ctifl* 238: 31-35.
- Eun Soo S, Guo Jia & Wang Myeong Hyeon 2008 The chilli pepper (*Capsicum annuum*) MYB transcription factor (CaMYB) is induced by abiotic stresses. *Journal of Plant Biochemistry and Biotechnology* 17 (2): 193-196.
- Farhad M, Hasanuzzaman M, Biswas B K, Azad A K & Arifuzzaman M 2008 Reliability of yield contributing characters for improving yield potential in chilli (*Capsicum annuum*). *International Journal of Sustainable Crop Production* 3 (3): 30-38.
- Gal A B, Ityel E, Dudley L, Cohen S, Yermiyahu U, Presnov E, Zigmund L & Shani U 2008 Effect of irrigation water salinity on transpiration and on leaching requirements: a case study for bell peppers. *Agricultural Water Management* 95 (5): 587-597.
- Garcia D M, Stewart K A & Seguin P 2008 Effects of saline water on growth and physiology of bell pepper seedlings. *International Journal of Vegetable Science* 14 (2): 121-138.
- Grazia J de, Tittonell P A & Chiesa A 2008 Nitrogen fertilization methods affect growth of sweet pepper (*Capsicum annuum* L.) transplants. *Acta Horticulturae* 782: 193-199.
- Guang Cheng S, Liu Na & Chen Lei 2008 Character of water demand and yield of space-time deficit irrigation for hot pepper in greenhouse. *Nongye Jixie Xuebao* (Transactions of the Chinese Society for Agricultural Machinery) 39 (4): 117-121.
- Guang Cheng S, Zhang Juan, Chen Lei, Liu Na & Xing Wen Gang 2008 Effect of space-time deficit irrigation on physiological and agronomic features of hot pepper in greenhouse. *Nongye Jixie Xuebao* (Transactions of the Chinese Society for Agricultural Machinery) 39 (3): 96-100.
- Herman M A B, Nault B A & Smart C D 2008 Effects of plant growth-promoting rhizobacteria on bell pepper production and green peach aphid infestations in New York. *Crop Protection* 27 (6): 996-1002.

- Hierro J M H, Garcia Villanova R J, Torrero P R & Toruno Fonseca I M 2008 Aflatoxins and ochratoxin A in red paprika for retail sale in Spain: occurrence and evaluation of a simultaneous analytical method. *Journal of Agricultural and Food Chemistry* 56 (3): 751-756.
- Hongal M M, Chittapur B M & Rudragouda 2008 Effect of green manures and nitrogen levels on growth and fresh fruit yield of chilli (*Capsicum annuum* L.) cv. Byadagi kaddi in chilli + cotton intercropping system. *Crop Research, Hisar* 35 (1/2): 52-53.
- Hongal M M, Chittapur B M & Rudragouda 2008 Effect of green manures and nitrogen levels on the performance of dry chilli in chilli + cotton intercropping system. *Crop Research, Hisar* 35 (1/2): 54-56.
- Hongal M M, Chittapur B M & Rudragouda 2008 Effect of green manures and nitrogen levels on the performance of cotton (*Gossypium herbaceum* L.) in chilli + cotton intercropping system. *Crop Research, Hisar* 35 (1/2): 57-60.
- Hoon K S, Bok Y J, Wahng D J & Guen P H 2008 A major recessive gene associated with anthracnose resistance to *Colletotrichum capsici* in chili pepper (*Capsicum annuum* L.). *Breeding Science* 58 (2): 137-141.
- Hosamani P M & Shivkumar 2008 Correlation and path coefficient analysis in chilli. *Indian Journal of Horticulture* 65 (3): 349-352.
- Hua X, Liu Han Zhu, Wang Hai Xia & Zhao Yu Jun 2008 Studies on developmental anatomy of floral nectaries of male sterile homomaintainer line in "Hot pepper 95-1". *Journal of Wuhan Botanical Research* 26 (2): 119-123.
- Hyun J M, Mok K J, Kalme S, Wook H J, Sang Y H, Heung K J, Sung K B, Kun K S & Young Y M 2008 Cloning, purification, and polymerization of *Capsicum annuum* recombinant alpha and beta tubulin. *Bioscience, Biotechnology and Biochemistry* 72 (4): 1048-1055.
- Hyun L J, Kiyota N, Ikeda T & Nohara T 2008 Three new acyclic diterpene glycosides from the aerial parts of paprika and pimiento. *Chemical and Pharmaceutical Bulletin* 56 (4): 582-584.
- Islam M S, Howlader M I A, Rafiquzzaman S, Bashar H M K & Al Mamun M H 2008 Yield response of Chili and T. Aman rice to NPK fertilizers in ganges tidal floodplain. *Journal of Soil and Nature* 2 (1): 7-13.
- Iturvide F A, Marquez Lucio M A, Morales Ramirez I, Vazquez Garciduenas M S & Olalde Portugal V 2008 Mycorrhizal protection of chili plants challenged by *Phytophthora capsici*. *European Journal of Plant Pathology* 120 (1): 13-20.
- Jayapadma P N, Sumangala Bhat & Kuruvinashetti M S 2008 Somatic embryogenesis and plantlet regeneration in chilli (*Capsicum annuum* L.). *Asian Journal of Bio Science* 3 (1): 61-65.
- Jian Jun Z, Hai Xia W, Yong Chang M & Zheng Yan 2008 Experimental research on hot-air drying properties of capsicum. *Transactions of the Chinese Society of Agricultural Engineering* 24 (3): 298-301.
- Johkan M, Oda M & Mori G 2008 Ascorbic acid promotes graft-take in sweet pepper plants (*Capsicum annuum* L.). *Scientia Horticulturae* 116 (4): 343-347.
- Joung K H, Ryul L H, Heon H J, In Y S, Hark H C & Dong KB 2008 Marker production by PCR amplification with primer pairs from conserved sequences of WRKY genes in chili pepper. *Molecules and Cells* 25 (2): 196-204.
- Juarez M del R A, Rocha Granados M del C, Lopez M G, Rivera Bustamante R F & Ochoa Alejo N 2008 Virus-induced silencing of Comt, pAmt and Kas genes results in a reduction of capsaicinoid accumulation in chili pepper fruits. *Planta* 227 (3): 681-695.
- Jun Dae L, Yoon Jae Bok & Park Hyo Guen 2008 A CAPS marker associated with the partial restoration of cytoplasmic male sterility in chili pepper (*Capsicum annuum* L.). *Molecular Breeding* 21 (1): 95-104.

- Kabura B H, Musa B & Odo P E 2008 Evaluation of the yield components and yield of onion (*Allium cepa* L.)-pepper (*Capsicum annuum* L.) intercrop in the Sudan savanna. *Journal of Agronomy* 7 (1): 88-92.
- Kaparakis G & Alderson P G 2008 Role for cytokinins in somatic embryogenesis of pepper (*Capsicum annuum* L.) *Journal of Plant Growth Regulation* 27 (2): 110-114.
- Kasyap A, Tiwari P K, Khare C P & Thrimurthy V S 2008 Evaluation of varieties and fungicides against anthracnose and fruit rot of chilli. *Annals of Plant Protection Sciences* 16 (1): 159-161.
- Khan A, Bilqees F M, Khanzada K A, Khatoon N & Shahzad S 2008 Histopathological studies of *Meloidogyne incognita* (Kofoid & White, 1919) Chitwood 1949, associated with chilli. *Pakistan Journal of Nematology* 26 (2): 153-157.
- Khereba A H, Gharib A A, Mahmoud S M, Ahmed Y M & El Sayed A A 2008 A study on the combining ability in chilli pepper (*Capsicum annuum* L. and *Capsicum chinense* Jacq.) using line x tester analysis. *Bulletin of Faculty of Agriculture, Cairo University* 59 (2): 116-122.
- Kui Jae L, Kamala Kannan S, Sub HanSang, Seong ChoKyu & Lee GunWoong 2008 Biological control of *Phytophthora* blight in red pepper (*Capsicum annuum* L.) using *Bacillus subtilis*. *World Journal of Microbiology and Biotechnology* 24 (7): 1139-1145.
- Li Fen L 2008 A new hot pepper F1 hybrid - 'Tiejiao No.6'. *China Vegetables* 2: 37-38.
- Li Hao W, Zhang Bao Xi, Caranta C, Mao Sheng Li & Palloix A 2008 Molecular markers assisted selection for three QTLs resistant to PVY in pepper (*Capsicum annuum* L.). *Acta Horticulturae Sinica* 35 (1): 53-58.
- Li Z, Liu Fa Wan, Yang Min Jie, Zhang Li Qin, Qin Rong & Li Wei Fen 2008 Strategic studies on sustainable development of capsicum industry in Yunnan. *Southwest China Journal of Agricultural Sciences* 21 (2): 528-532.
- Li E J, Qing C & Chang X K 2008 Antioxidant activities and composition of extracts from chilli. *International Journal of Food Science and Technology* 43 (4): 666-672.
- Lightbourn G J, Griesbach R J, Novotny J A, Clevidence B A, Rao D D & Stommel J R 2008 Effects of anthocyanin and carotenoid combinations on foliage and immature fruit color of *Capsicum annuum* L. *Journal of Heredity* 99 (2): 105-111.
- Mahdavian K, Ghorbanli M & Kalantari K M 2008 The effects of ultraviolet radiation on some antioxidant compounds and enzymes in *Capsicum annuum* L. *Turkish Journal of Botany* 32 (2): 129-134.
- Mahdavian K, Ghorbanli M & Kalantari K M 2008 The effects of ultraviolet radiation on the contents of chlorophyll, flavonoid, anthocyanin and proline in *Capsicum annuum* L. *Turkish Journal of Botany* 32 (1): 25-33.
- Morgado C M A, Durigan J F, Sanches J, Galati V C & Ogassavara F O 2008 Postharvest conservation of bell pepper fruits under different storage conditions and films. *Horticultura Brasileira* 26 (2): 170-174.
- Narayan S, Ahmed N, Chattoo M A, Hussain K, Shahnaz Mufti & Bhat S A 2008 Effect of nitrogen and spacing on seed production of paprika (*Capsicum annum* sub sp. *grossum*) under temperate conditions. *Progressive Agriculture* 8 (1): 32-33.
- Oboh G & Rocha J B T 2008 Hot pepper (*Capsicum* spp.) protects brain from sodium nitroprusside and quinolinic acid induced oxidative stress in vitro. *Journal of Medicinal Food* 11 (2): 349-355.
- Pagamas P & Nawata E 2008 Sensitive stages of fruit and seed development of chili pepper (*Capsicum annuum* L. var. Shishito) exposed to high temperature stress. *Scientia Horticulturae* 117 (1): 21-25.

- Pandey J, Jagdish Singh, Ajay Verma, Singh A K, Mathura Rai & Sanjeet Kumar 2008 Evaluation of chilli (*Capsicum annuum* L) genotypes for some quality traits. Journal of Food Science and Technology, Mysore 45 (5): 463-465.
- Pandhair V & Sharma S 2008 Accumulation of capsaicin in seed, pericarp and placenta of *Capsicum annuum* L fruit. Journal of Plant Biochemistry and Biotechnology 17 (1): 23-27.
- Perez J C D, Granberry D M & Germishuizen P 2008 Transplant growth and stand establishment of bell pepper (*Capsicum annuum* L.) plants as affected by compost amended substrate. Acta Horticulturae 782: 223-227.
- Perez J C D, Silvoy J, Phatak S C, Ruberson J & Morse R 2008 Effect of winter cover crops and no-till on the yield of organically grown bell pepper (*Capsicum annuum* L.). Acta Horticulturae 767: 243-247.
- Ping S, Yan Shu Zhen, Chen Shuang Lin, Cui Xiao Can & Li Li 2008 Growth promotion and control for blight of endophytic bacterium with ACC deaminase in *Capsicum*. Acta Phytopylacica Sinica 35 (1): 28-32.
- Rakshit A, Rakshit S, Deokar A & Dasgupta T 2008 Effect of different explant and hormones on in vitro callus induction and regeneration of pepper (*Capsicum annuum* L.). Asian Journal of Bio Science 3 (1): 180-183.
- Ramos G M, Torre Almaraz R de la, Bujanos Muniz R, Guevara Gonzalez R G, Tierranegra Garcia N, Guevara Olvera L, Gonzalez Chavira M M & Torres Pacheco I 2008 Co-transmission of *Pepper huasteco yellow vein virus* and *Pepper golden mosaic virus* in chili pepper by *Bemisia tabaci* (Genn.). Journal of Entomology 5 (3): 176-184.
- Sanatombi K & Sharma G J 2008 Capsaicin content and pungency of different *Capsicum* spp. cultivars. Notulae Botanicae, Horti Agrobotanici, Cluj Napoca 36 (2): 89-90.
- Sanatombi K & Sharma G J 2008 In vitro plant regeneration in six cultivars of *Capsicum* spp. using different explants. Biologia Plantarum 52 (1): 141-145.
- Sang-Keun O, Baek Kwang-Hyun, Park-Jeong Mee, Yi So Young, Yu Seung Hun, Kamoun S & Choi Doil 2008 *Capsicum annuum* WRKY protein CaWRKY1 is a negative regulator of pathogen defense. New Phytologist 177 (4): 977-989.
- Santos B M, Mora Bolanos J E & Solorzano Arroyo J A 2008 Impact of solarization and soil fumigants on hot pepper production in high tunnels. Asian Journal of Plant Sciences 7 (1): 113-115.
- Saritnum O, Minami M, Matsushima K, Minamiyama Y, Hirai M, Baba T, Bansho H, & Nemoto K 2008 Inheritance of few pungent trait in chili pepper 'S3212' (*Capsicum frutescens*). Journal of the Japanese Society for Horticultural Science 77 (3): 265-269.
- Sarkar H, Surajit Mahato, Somchoudhury A K & Sarkar P K 2008 Management of yellow mite, *Polyphagotarsonemus latus* (Banks) (Acari: Tarsonemidae) infesting chilli (*Capsicum annuum* L.) in gangetic alluvial plains of West Bengal. Journal of Entomological Research 32 (2): 127-130.
- Saxena A & Hundal J S 2008 Genotypic and environmental effects to obtain higher yields of hybrid seed of *Capsicum annuum* L. Journal of New Seeds 9 (2): 174-189.
- Sharma A, Anjana Srivastava, Bali Ram & Srivastava P C 2008 Dissipation behaviour of spinosad insecticide in chilli and soil. Asian Journal of Water, Environment and Pollution 5 (2): 49-52.
- Shetty G R & Manohar R K 2008 Influence of pruning and growth regulators on flowering, fruit set and yield of coloured capsicum (*Capsicum annuum* L.) cv. Orobelle under naturally ventilated greenhouse. Crop Research, Hisar 35 (1/2): 61-64.
- Shetty G R, Gowda M C, Manohar R K, Sreeramu B S & Hemavathi N 2008 Impact of integrated nutrient management on flowering, fruit set and yield of coloured capsicum (*Capsicum annuum* L.) cv. Orobelle under naturally ventilated greenhouse. Crop Research, Hisar 35 (1/2): 65-68.

- Shetty G R, Manohar R K, Gowda M C & Sreeramu B S 2008 Fruit growth of red coloured capsicum (*Capsicum annuum* L.) cv. Bombi as influenced by stem pruning and growth regulators under greenhouse. *Crop Research, Hisar* 35 (1/2): 69-72.
- Shetty G R, Manohar R K, Vishwanath A P, Kempegowda K & Raghavendra 2008 Influence of pruning and growth regulators on the shelf life of coloured capsicum (*Capsicum annuum* L.) cv. Bombi under greenhouse. *Mysore Journal of Agricultural Sciences* 42 (1): 33-37.
- Shu Bin W, Liu Jin Bing & Pan Bao Gui 2008 RAPD analysis of genomic DNAs between CMS line of hot pepper and its maintainer line. *Acta Agriculturae Shanghai* 24 (1): 8-10.
- Shu Gen Z, Xing Yong Ping & Wang Zhen Quan 2008 A new slightly hot sweet pepper F1 hybrid - 'Haifeng No. 25'. *China Vegetables* 5: 31-32.
- Silber A 2008 High frequency irrigations as means for enhancement of nutrient use efficiency: soilless grown bell pepper as a model plant. *Acta Horticulturae* 779: 281-288.
- Singh T, Singh A K, Anju Pal & Singh S S 2008 Biological control of wilt disease of chilli. *Progressive Research* 3 (1): 105-106.
- Srinivasan S & Suhanya R 2008 A comparative study of antioxidants in green and dried chilli varieties. *Indian Journal of Nutrition and Dietetics* 45 (4): 125-130.
- Stirling G R & Eden L M 2008 The impact of organic amendments, mulching and tillage on plant nutrition, *Pythium* root rot, root-knot nematode and other pests and diseases of capsicum in a subtropical environment, and implications for the development of more sustainable vegetable farming systems. *Australasian Plant Pathology* 37 (2): 123-131.
- Suna K, Youl H T & Bok P J 2008 Characteristics of pigment composition and colour value by the difference of harvesting times in Korean red pepper varieties (*Capsicum annuum*, L.). *International Journal of Food Science and Technology* 43 (5): 915-920.
- Sy O, Steiner R & Bosland P W 2008 Recombinant inbred line differential identifies race-specific resistance to *Phytophthora* root rot in *Capsicum annuum*. *Phytopathology* 98 (8): 867-870.
- Techawongstien S, Khemnuk S, Lertrat K, Techawongstien S & Theerakulpisut P 2008 Determination of the inheritance of pungency in *Capsicum* by molecular techniques. *Acta Horticulturae* 765: 109-116.
- Tewksbury J J, Levey D J, Huizinga M, Haak D C & Traveset A 2008 Costs and benefits of capsaicin-mediated control of gut retention in dispersers of wild chilies. *Ecology* 89 (1): 107-117.
- Than P P, Jeewon R, Hyde K D, Pongsupasamit S, Mongkolporn O & Taylor P W J 2008 Characterization and pathogenicity of *Colletotrichum* species associated with anthracnose on chilli (*Capsicum* spp.) in Thailand. *Plant Pathology* 57 (3): 562-572.
- Valle R V, Medina Aguilar M M & Creamer R 2008 First report of *Beet mild curly top virus* infection of Chile pepper in North Central Mexico. *Plant Disease* 92 (4): 650.
- Vidal D G, Rocha Sosa M, Sepulveda Garcia E B, Lara Reyna J, Rojas Martinez R & Zavaleta Mejia E 2008 Phenylalanine ammonia lyase activity in chilli CM-334 infected by *Phytophthora capsici* and *Nacobbus aberrans*. *European Journal of Plant Pathology* 120 (3): 299-303.
- Wei M, Gong Zhen Hui, Li Da Wei & Jia Qing Li 2008 Analysis and cloning of LRR class disease resistant gene analogs in *Capsicum annuum*. *Journal of Northwest Agriculture and Forestry* 36 (1): 143-148.
- Wen Hai H, Cao Yu Lin, Zeng Jiang Jun, Shi Kai & Yu Jing Quan 2008 Effects of heat and drought stresses on growth and respiration in different cultivar of pepper (*Capsicum annuum* L.). *Bulletin of Botanical Research* 28 (2): 199-204.
- Woong Ki M, Lim Hee Rae, Lee Young Pyo, Sung Soon Kee, Kim Byung Dong & Kim Sung Gil 2008 Identification of a third haplotype of the sequence linked to the Restorer of fertility (Rf) gene and its implications for male-sterility phenotypes in peppers (*Capsicum annuum* L.). *Molecules and Cells* 25 (1): 20-29.

- Xiao Lu Z, Xue Quan Hong, Guo ZhiYing, Yang Bin, Zhou Yong Qiang & Xu Ying Jun 2008 Effect of the inoculation with the fungi and actinomycetes against *Phytophthora capsici* and the colonization capability and the growth and PPO activity of capsicum's leaf and root. *Journal of Northwest A and F University Natural Science Edition* 36 (4): 151-158.
- Yadwad A, Sridevi O & Salimath P M 2008 Genetic variability in segregating progenies of chilli (*Capsicum annuum* L.). *International Journal of Plant Sciences Muzaffarnagar* 3 (1): 106-110.
- Yadwad A, Sridevi O & Salimath P M 2008 Leaf trichomes based resistance in chilli (*Capsicum annuum*) to thrips and mites. *Indian Journal of Agricultural Sciences* 78 (6): 518-521.
- Yamamoto S, Misumi M & Nawata E 2008 Effects of photoperiod on vegetative growth, flowering and fruiting of *Capsicum frutescens* L. and *C. annuum* L. in Japan. *Environment Control in Biology* 46 (1): 39-47.
- Yan L, Xu Bo, Lin Ming, Wang Yu Na, Cao Lei, He Li, Liu Ping & He Shui Lin 2008 Isolation of ubiquitin conjugating enzyme cDNA from *Capsicum annuum* and analysis of its expression under UV-B stress. *Journal of Fujian Agriculture and Forestry* 37 (2): 162-165.
- Yan M, Chang Zhi Zhou, Zhao Jiang Tao & Zhou Ming Guo 2008 Antifungal activity of *Penicillium striatisporum* Pst10 and its biocontrol effect on *Phytophthora* root rot of chilli pepper. *Biological Control* 44 (1): 24-31.
- Yoo Nah J, Cho Young Yeol, Rhee Han Cheol & Um Yeong Cheol 2008 Effects of rootstock and night temperature on the growth and yield of grafted pepper (*Capsicum annuum* L.). *Horticulture, Environment and Biotechnology* 49 (2): 63-71.
- Young Sam S, Kim Eun Yu, Mang Hyung Gon & Kim Woo Taek 2008 Heterologous expression, and biochemical and cellular characterization of CaPLA1 encoding a hot pepper phospholipase A1 homolog. *Plant Journal* 53 (6): 895-908.
- Yu R, Zhang Yin Dong, Yin Jun Mei & Wang De Yuan 2008 Parent grouping of 31 elite inbred lines in hot pepper (*Capsicum annuum* L.). *Hereditas Beijing* 30 (2): 237-245.
- Za K M, Chang J I, Ae K J, Joon P E, Chung Y M & Won L Y 2008 Embryogenesis and plant regeneration of hot pepper (*Capsicum annuum* L.) through isolated microspore culture. *Plant Cell Reports* 27 (3): 425-434.
- Zhi Ying G, Xue Quan Hong, Zhang Xiao Lu, Yang Bin, Xu Ying Jun & Zhou Yong Qiang 2008 Effect of the inoculation with the antagonistic fungi and actinomycetes in seedbed on micro-ecological systems of capsicum rooting zone and yield of capsicum. *Journal of Northwest Agriculture and Forestry University Natural Science Edition* 36 (4): 159-165, 170.

### **Coriander (*Coriandrum sativum* L.)**

- Arbab A, Farahani H A & Abbaszadeh B 2008 The effects of super phosphate triple, water deficit stress and *Glomus hoi* biological fertilizer on some quantity and quality characteristics of *Coriandrum sativum* L. *Iranian Journal of Medicinal and Aromatic Plants* 24 (1): 18-30.
- Datta S, Alam K & Chatterjee R 2008 Effect of different levels of nitrogen and leaf cutting on growth, leaf and seed yield of coriander. *Indian Journal of Horticulture* 65 (2): 201-203.
- Grosso C, Ferraro V, Figueiredo A C, Barroso J G, Coelho J A & Palavra A M 2008 Supercritical carbon dioxide extraction of volatile oil from Italian coriander seeds. *Food Chemistry* 111 (1): 197-203.
- Kumar A, Singh R & Chhillar R K 2008 Influence of omitting irrigation and nitrogen levels on growth, yield and water use efficiency of coriander (*Coriandrum sativum* L.). *Acta Agronomica Hungarica* 56 (1): 69-74.
- Lopez P A, Widrlechner M P, Simon P W, Rai S, Boylston T D, Isbell T A, Bailey T B, Gardner C A & Wilson L A 2008 Assessing phenotypic, biochemical, and molecular diversity in coriander (*Coriandrum sativum* L.) germplasm. *Genetic Resources and Crop Evolution* 55 (2): 247-275.



- Merino A, Ferrer J, Gomez J, Canales E & Borquez R 2008 Modeling of coriander seeds drying in an impingement dryer. *Drying Technology* 26 (1/3): 283-289.
- Nitharwal M & Ashok Sharma 2008 The feeding efficiency of natural enemies on brown wheat mite, *Petrobia latens* (Muller) infesting coriander under laboratory conditions. *Asian Journal of Bio-Science* 3 (1): 220-221.
- Sanchez C R, Altendorf K, Smalla K & Lipski A 2008 Spraying of oxytetracycline and gentamicin onto field-grown coriander did not affect the abundance of resistant bacteria, resistance genes, and broad host range plasmids detected in tropical soil bacteria. *Biology and Fertility of Soils* 44 (4): 589-596.

### **Cumin (*Cuminum cyminum* L.)**

- Deepak P, Saran L & Lal G 2008 Control of wilt and blight diseases of cumin through antagonistic fungi under in vitro and field conditions. *Notulae Botanicae, Horti Agrobotanici, Cluj Napoca* 36 (2): 91-96.
- Mann R, Kshitij Agarwal, Chhater Singh, Vidhu Aeri & Nema R K 2008 Adventitious shoot proliferation from aseptically germinated seedlings of *Cuminum cyminum*. *Pharmacognosy Magazine* 4 (14): 132-137.
- Milan K S M, Hemang Dholakia, Tiku P K & Prakash Vishveshwaraiah 2008 Enhancement of digestive enzymatic activity by cumin (*Cuminum cyminum* L.) and role of spent cumin as a bionutrient. *Food Chemistry* 110 (3): 678-683.
- Panesar B & Jadeja G C 2008 Correlation studies and path analysis for agro-morphological traits in cumin (*Cuminum cyminum* L.). *Crop Research Hisar* 35 (1/2): 140-144.
- Saiedirad M H, Tabatabaefar A, Borghei A, Mirsalehi M, Badii F & Varnamkhasti M G 2008 Effects of moisture content, seed size, loading rate and seed orientation on force and energy required for fracturing cumin seed (*Cuminum cyminum* Linn.) under quasi-static loading. *Journal of Food Engineering* 86 (4): 565-572.
- Zhan Wen X, Chen Guang Quan, Wang Jin & Zhao Zhi Xi 2008 Optimized intercropping configuration pattern for *Cuminum cyminum* L. and *Zea mays* L. *Zhongguo Shengtai Nongye Xuebao/Chinese Journal of Eco Agriculture* 16 (2): 459-463.

### **Fennel (*Foeniculum vulgare* Miller)**

- An Xiang R, He Jin Ming, Xiao Yan Hui & Wang Yu Mei 2008 Effects of CO<sub>2</sub> concentration on plant growth, contents and components of essential oil in fennel (*Foeniculum vulgare*). *Journal of Plant Ecology Chinese Version* 32 (3): 698-703.
- Ayub M, Nadeem M A, Tanveer A, Tahir M, Saqib M T Y & Nawaz R 2008 Effect of different sowing methods and times on the growth and yield of fennel (*Foeniculum vulgare* Mill). *Pakistan Journal of Botany* 40 (1): 259-264.
- Carrubba A, Torre R la, Saiano F & Aiello P 2008 Sustainable production of fennel and dill by intercropping. *Agronomy for Sustainable Development* 28 (2): 247-256.
- Faudale M, Viladomat F, Bastida J, Poli F & Codina C 2008 Antioxidant activity and phenolic composition of wild, edible, and medicinal fennel from different Mediterranean countries. *Journal of Agricultural and Food Chemistry* 56 (6): 1912-1920.
- Koudela M & Petrikova K 2008 Nutritional compositions and yield of sweet fennel cultivars - *Foeniculum vulgare* Mill. ssp. *vulgare* var. *azoricum* (Mill.) Thell. *Horticultural Science* 35 (1): 1-6.
- Mona Y K, Kandil M A M & Hend M F S 2008 Effect of three different compost levels on fennel and salvia growth character and their essential oils. *Research Journal of Agriculture and Biological Sciences* 4 (1): 34-39.

Sekken M S A, Fahmy A A & Ahmed S S 2008 Performance of growing rabbits fed diets containing different levels of Fennel and Marjoram wastes under desert environmental conditions. *Egyptian Journal of Nutrition and Feeds* 11 (1): 1-23.

### **Fenugreek (*Trigonella foenum-graecum* L.)**

Acharya S N, Thomas J E & Basu S K 2008 Fenugreek, an alternative crop for semiarid regions of North America. *Crop Science* 48 (3): 841-853.

Aparicio M F, Emeran A A & Rubiales D 2008 Control of *Orobanche crenata* in legumes intercropped with fenugreek (*Trigonella foenum graecum*). *Crop Protection* 27 (3/5): 653-659.

Astaraei A R & Sampietro D A 2008 Allelopathic effect of almond on cress and fenugreek. *Allelopathy Journal* 22 (1): 239-244.

Bajpai K G, Rahul Gupta Samta-Johri; Saxena A M 2008 Evaluation of ethanol extracts of *Trigonella foenum graecum* and *Swertia chirayita* for blood sugar lowering in rats. *Journal of Applied Bioscience* 34 (1): 97-99.

Basu S K, Acharya S N & Thomas J E 2008 Genetic improvement of fenugreek (*Trigonella foenum graecum* L.) through EMS induced mutation breeding for higher seed yield under western Canada prairie conditions. *Euphytica* 160 (2): 249-258.

Bisht S 2008 Inhibitory effect of phylloplane fungi on *Erysiphe polygoni* DC inciting powdery mildew disease of *Trigonella foenum graecum*. *Annals of Plant Protection Sciences* 16 (1): 150-152.

Haouala R, Khanfir R, Tarchoune A, Hawala S & Beji A 2008 Allelopathic potential of *Trigonella foenum graecum* L. *Allelopathy Journal* 21 (2): 307-316.

Mahorkar V K, Meena H R, Jadhao B J, Panchbhai D M, Dod V N & Peshattiwari P D 2008 Effect of micronutrients and humic acid on growth and leaf yield of fenugreek. *Plant Archives* 8 (1): 303-306.

Patil U D, Dhanphule S S & Arvadia M K 2008 Effect of organic manure and inorganic fertilizers application on growth and yield attributes of fenugreek (*Trigonella foenum graecum* L.). *International Journal of Plant Sciences Muzaffarnagar* 3 (1): 233-234.

Rathore H S & Porwal M K 2008 Nutrient uptake, protein content and relative economics of fenugreek (*Trigonella foenum graecum*) as influenced by sowing dates, microbial inoculation and weed management. *Indian Journal of Agricultural Sciences* 78 (6): 560-562.

Sulieman A M E, Ali A O & Hemavathy J 2008 Lipid content and fatty acid composition of fenugreek (*Trigonella foenum graecum* L.) seeds grown in Sudan. *International Journal of Food Science and Technology* 43 (2): 380-382.

Vasudevan S N, Sudarshan J S, Kurdikeri M B & Dharmatti P R 2008 Influence of harvesting stages on seed yield and quality in Fenugreek. *Karnataka Journal of Agricultural Sciences* 21 (1): 122-124.

Vasudevan S N, Sudarshan J S, Kurdikeri M B & Dharmatti P R 2008 Influence of pinching of apical bud and chemical sprays on seed yield and quality of fenugreek. *Karnataka Journal of Agricultural Sciences* 21 (1): 26-29.

Yadav M, Radha Tomar, Prasad G B K S, Shalini Jain & Hariom Yadav 2008 Complementary hypoglycemic and anti hyperglycemic activity of various extracts of fenugreek seeds in rats. *Asian Journal of Biochemistry* 3 (3): 182-187.

### **Garcinia (*Garcinia* spp.)**

Chen L, Yang L & Wang C 2008 Anti-inflammatory activity of mangostins from *Garcinia mangostana*. *Food and Chemical Toxicology* 46 (2): 688-693.

Chin Y W, Jung H A, Chai H Y, Keller W J & Kinghorn A D 2008 Xanthenes with quinone reductase-inducing activity from the fruits of *Garcinia mangostana* (Mangosteen). *Phytochemistry* 69 (3): 754-758.

- John K J, Kumar R S, Suresh C P, George J K & Abraham Z 2008 Occurrence, distribution and economic potential of seashore mangosteen (*Garcinia hombroniana* Pierre) in India. Genetic Resources and Crop Evolution 55 (2): 183-186.
- Louh G N, Lannang A M, Mbazona C D, Tangmouo J G, Komguem J, Castilho P, Ngninzeko F N, Qamar N, Lontsi D, Choudhary M I & Sondengam B L 2008 Polyanxanthone A, B and C, three xanthones from the wood trunk of *Garcinia polyantha* Oliv. Phytochemistry 69 (4): 1013-1017.
- Martins F T, Doriguetto A C, Souza T C de, Souza K R D de, Santos M H dos, Moreira M E C & Barbosa L C A 2008 Composition, and anti-inflammatory and antioxidant activities of the volatile oil from the fruit peel of *Garcinia brasiliensis*. Chemistry and Biodiversity 5 (2): 251-258.
- Muensritharam L, Tolieng V, Chaichantipyuth C, Petsom A & Nhujak T 2008 Capillary zone electrophoresis for separation and analysis of hydroxycitric acid and hydroxycitric acid lactone: application to herbal products of *Garcinia atroviridis* Griff. Journal of Pharmaceutical and Biomedical Analysis 46 (3): 577-582.
- Namuco L O 2008 'Roxas Purple,' a new nsic-registered variety of mangosteen (*Garcinia mangostana* L.). Philippine Journal of Crop Science 33 (1): 103-106.
- Wu C, Lu Y, Wei B, Yang S, Won S & Lin C 2008 Phloroglucinols with prooxidant activity from *Garcinia subelliptica*. Journal of Natural Products 71 (2): 246-250.

### Garlic (*Allium sativum* L.)

- Celik A, Unyayar S, Cekic F O & Guzel A 2008 Micronucleus frequency and lipid peroxidation in *Allium sativum* root tip cells treated with gibberellic acid and cadmium. Cell Biology and Toxicology 24 (2): 159-164.
- El Shenawy N S, Soliman M F M & Reyad S I 2008 The effect of antioxidant properties of aqueous garlic extract and *Nigella sativa* as anti-schistosomiasis agents in mice. Revista do Instituto de Medicina Tropical de Sao Paulo 50 (1): 29-36.
- Hafeeza K, Sariya T & Hina Ys 2008 Phospholipase D from *Allium sativum* bulbs: a highly active and thermal stable enzyme. International Journal of Biological Macromolecules 42 (4): 380-385.
- He N, Li Q, Sun D & Ling X 2008 Isolation, purification and characterization of superoxide dismutase from garlic. Biochemical Engineering Journal 38 (1): 33-38.
- Ipek M, Ipek A & Simon P W 2008 Genetic characterization of *Allium tuncelianum*: an endemic edible *Allium* species with garlic odor. Scientia Horticulturae 115 (4): 409-415.
- Ipek M, Ipek A & Simon P W 2008 Molecular characterization of Kastamonu garlic: an economically important garlic clone in Turkey. Scientia Horticulturae 115 (2): 203-208.
- Jaggi R C & Raina S K 2008 Direct, residual and direct + residual effects of sulphur in garlic (*Allium sativum*)-maize (*Zea mays*) cropping sequence. Journal of Environmental Biology 29 (1): 85-88.
- Jaggi R C & Raina S K 2008 Nutrient content in garlic during growth as indices of yield and yield attributes. Indian Journal of Horticulture 65 (1): 119-121.
- Junior M A, Marraccini F M, Melo Filho P de A, Dusi A N, Pio Ribeiro G & Ribeiro B M 2008 Recombinant expression of *Garlic virus C* (GARV-C) capsid protein in insect cells and its potential for the production of specific antibodies. Microbiological Research 163 (3): 354-361.
- Kim E, Choi N, Bajpai V K & Kang S 2008 Synergistic effect of nisin and garlic shoot juice against *Listeria monocytogenes* in milk. Food Chemistry 110 (2): 375-382.
- Long Y, Wu Z, Yang, Li C & Zeng X 2008 Anatomy of organogenesis from garlic (*Allium sativum* L.) rachis in vitro culture. Acta Botanica Boreali Occidentalia Sinica 28 (3): 470-474.

- Mahmoud S Y M, Abo El M S A, El Borollosy A M & Abdel Ghaffar M H 2008 Identification of *Onion yellow dwarf potyvirus* as one of the major viruses infecting garlic in Egypt. *International Journal of Virology* 4 (1): 1-13.
- O'Gara E A, Maslin D J, Nevill A M & Hill D J 2008 The effect of simulated gastric environments on the anti-*Helicobacter* activity of garlic oil. *Journal of Applied Microbiology* 104 (5): 1324-1331.
- Parisi M G, Moreno S & Fernandez G 2008 Isolation and characterization of a dual function protein from *Allium sativum* bulbs which exhibits proteolytic and hemagglutinating activities. *Plant Physiology and Biochemistry* 46 (4): 403-413.
- Sadeghi A, Smagghe G, Broeders S, Hernalsteens J P, Greve H de, Peumans W J & Damme E J M van 2008 Ectopically expressed leaf and bulb lectins from garlic (*Allium sativum* L.) protect transgenic tobacco plants against cotton leafworm (*Spodoptera littoralis*). *Transgenic Research* 17 (1): 9-18.
- Salam A M A, Ammar N & Abdel Hamid A Z 2008 Effectiveness of probiotic labneh supplemented with garlic or onion oil against *Schistosoma mansoni* in infected mice. *International Journal of Dairy Science* 3 (2): 97-104.
- Seki T, Hosono T, Hosono Fukao T, Inada K, Tanaka R, Ogihara J & Ariga T 2008 Anticancer effects of diallyl trisulfide derived from garlic. *Asia Pacific Journal of Clinical Nutrition* 17 (Supplement 1): 249-252.
- Shahraeen N, Lesemann D E & Ghotbi T 2008 Survey for viruses infecting onion, garlic and leek crops in Iran. *Bulletin OEPP/EPPO Bulletin* 38 (1): 131-135.
- Shemesh E, Scholten O, Rabinowitch H D & Kamenetsky R 2008 Unlocking variability: inherent variation and developmental traits of garlic plants originated from sexual reproduction. *Planta* 227 (5): 1013-1024.
- Stajner D, Igetic R, Popovic B M & Malencic D 2008 Comparative study of antioxidant properties of wild growing and cultivated *Allium* species. *Phytotherapy Research* 22 (1): 113-117.
- Stumpe M, Carsjens J G, Gobel C & Feussner I 2008 Divinyl ether synthesis in garlic bulbs. *Journal of Experimental Botany* 59 (4): 907-915.
- Su Juan J, Wang Jun Wei, Wang Yan Hong, Li Bo & Gui Jie Hua 2008 Relationship between available Pb, Cd in soil and garlic absorption. *Journal of Shenyang Agricultural University* 39 (2): 237-239.
- Sun Tay C, Lee Seung Koo, Cho Jung Eun & Bae Ro Na 2008 Effects of storage temperature and CA conditions on postharvest quality of garlic bulbs (*Allium sativum* L.). *Horticulture, Environment and Biotechnology* 49 (2): 109-113.
- Tamaki K, Sonoki S, Tamaki T & Ehara K 2008 Measurement of odour after in vitro or in vivo ingestion of raw or heated garlic, using electronic nose, gas chromatography and sensory analysis. *International Journal of Food Science and Technology* 43 (1): 130-139.
- Xu Q, Chen Q & Chen D 2008 Obtaining somatic chimeras by in vitro meristem-apex grafting-culture in garlic (*Allium sativum* L.). *Acta Horticulturae Sinica* 35 (1): 65-70.
- Yin X, Wei S, Liu B, He Z, Bai Ying Y & Hu S 2008 Restraining effect of garlic juice on two tomato fungus diseases. *Journal of Shenyang Agricultural University* 39 (1): 89-91.
- Zhang L & Cheng Z 2008 Effect of white rot pathology (*Sclerotium cepivorum* Berk.) on defensive enzymes of garlic. *Journal of Northwest Agriculture and Forestry* 36 (4): 171-174.
- Zheng L, Huang J & Hsiang T 2008 First report of leaf blight of garlic (*Allium sativum*) caused by *Stemphylium solani* in China. *Plant Pathology* 57 (2): 380.
- Zheng L, Liu J, Zhang L & Huang J 2008 Biological characteristics and host range of the pathogen causing white leaf spot of garlic. *Acta Phytopylacica Sinica* 35 (2): 119-122.
- Zheng S & Kik C 2008 Recent developments and future prospects of gene transfer in *Allium* species. *Advances in Plant Biotechnology* 457-473.

Zhi Hui C, Tong Fei & Jin Rui 2008 Primary study on the inhibitory effects on plant pathogen and the inhibitory ingredient of garlic straw aqueous extracts. *Acta Botanica Boreali Occidentalia Sinica* 28 (2): 324-330.

### Ginger (*Zingiber* spp.)

Ali B H, Blunden G, Tanira M O & Nemmar A 2008 Some phytochemical, pharmacological and toxicological properties of ginger (*Zingiber officinale* Roscoe): a review of recent research. *Food and Chemical Toxicology* 46 (2): 409-420.

Barguil B M, Albert I C L, Michereff S J & Oliveira S M A de 2008 Diagrammatic scale for assessment of torch ginger anthracnose severity. *Ciencia Rural* 38 (3): 807-810.

Chan E W C, Lim Y Y, Wong L F, Lianto F S, Wong S K, Lim K K, Joe C E & Lim T Y 2008 Antioxidant and tyrosinase inhibition properties of leaves and rhizomes of ginger species. *Food Chemistry* 109 (3): 477-483.

Chavan P, Dnyaneshwar Warude, Kalpana Joshi & Bhushan Patwardhan 2008 Development of SCAR (sequence characterized amplified region) markers as a complementary tool for identification of ginger (*Zingiber officinale* Roscoe) from crude drugs and multicomponent formulations. *Biotechnology and Applied Biochemistry* 50 (1): 61-69.

Chen I, C C, Ng C, Wang C Y, Shyu Y T & Chang T 2008 Antioxidant and antimicrobial activity of Zingiberaceae plants in Taiwan. *Plant Foods for Human Nutrition* 63 (1): 15-20.

Chun Mei H, Pan Kai Wen, Wu Ning, Wang Jin Chuang & Li Wei 2008 Allelopathic effect of ginger on seed germination and seedling growth of soybean and chive. *Scientia Horticulturae* 116 (3): 330-336.

Chung Yi C, Chen Ching Hsein, Kung Chiu Hu, Kuo Shih Hsing & Kuo Soong Yu 2008[6] Gingerol induces Ca<sup>2+</sup> mobilization in madin darby canine kidney cells. *Journal of Natural Products* 71 (1): 137-140.

Guan Q Z, Guo Y H, Sui X L, Li W & Zhang Z X 2008 Changes in photosynthetic capacity and antioxidant enzymatic systems in micropropagated *Zingiber officinale* plantlets during their acclimation. *Photosynthetica* 46 (2): 193-201.

Hailemichael G & Kindie Tesfaye 2008 The effects of seed rhizome size on the growth, yield and economic return of ginger (*Zingiber officinale* Rosc.). *Asian Journal of Plant Sciences* 7 (2): 213-217.

Jagadev P N, Panda K N & Beura S 2008 A fast protocol for in vitro propagation of ginger (*Zingiber officinale* Rosc.) of a tribal district of India. *Acta Horticulturae* 765: 101-107.

Kamble S Y, More T N, Patil S R, Pawar S G, Ram Bindurani & Bodhankar S L 2008 Plants used by the tribes of Northwest Maharashtra for the treatment of gastrointestinal disorders. *Indian Journal of Traditional Knowledge* 7 (2): 321-325.

Kavitha P G & Thomas G 2008 Population genetic structure of the clonal plant *Zingiber zerumbet* (L.) Smith (*Zingiberaceae*), a wild relative of cultivated ginger, and its response to *Pythium aphanidermatum*. *Euphytica* 160 (1): 89-100.

Lincy A K, Jayarajan K & Sasikumar B 2008 Relationship between vegetative and rhizome characters and final rhizome yield in micropropagated ginger plants (*Zingiber officinale* Rosc.) over two generations. *Scientia Horticulturae* 118 (1): 70-73.

Paliyal S S, Kamla Kanwar, Rajendra Sharma & Bedi M K 2008 Productivity and soil fertility under different nutrient applications in ginger + french bean cropping system in Western Himalayas. *Journal of Farming Systems Research and Development* 14 (1): 20-28.

Paret M L, Silva A S de, Criley R A & Alvarez A M 2008 *Ralstonia solanacearum* race 4: risk assessment for edible ginger and floricultural ginger industries in Hawaii. *HortTechnology* 18 (1): 90-96.

Pariari A, Imam M N & Chowdhury S M 2008 Performance of some ginger germplasm of north-eastern states in the Gangetic Alluvial Plains. *Crop Research, Hisar* 35 (1/2): 138-139.

- Priya R S & Subramanian R B 2008 Isolation and molecular analysis of R gene in resistant *Zingiber officinale* (ginger) varieties against *Fusarium oxysporum* f. sp. *zingiberi*. Bioresource Technology 99 (11): 4540-4543.
- Roy S S, Hore J K, Bandopadhyay A & Ghosh D K 2008 Effect of different organic manures with varying levels of nitrogen on the growth and yield of ginger grown as intercrop in pre-bearing coconut garden. Indian Coconut Journal 38 (9): 18-22.
- Shirsat N D, Nadkarni H R, Bhave S G, Gokhale N B & Sawant S S 2008 Clonal propagation of ginger var. Varada through tissue culture. Journal of Maharashtra Agricultural Universities 33 (2): 178-180.
- Silva M F da, Pescador R, Rebelo R A & Sturmer S L 2008 The effect of arbuscular mycorrhizal fungal isolates on the development and oleoresin production of micropropagated *Zingiber officinale*. Brazilian Journal of Plant Physiology 20 (2): 119-130.
- Soto A H, Gatica Arias A & Alvarenga Venutolo S 2008 Low cost glass fermentor design for mass micropropagation of ginger. Agronomia Mesoamericana 19 (1): 87-92.
- Tao Q, Xu Y, Lam R Y Y, Schneider B, Dou H, Leung P, Shi S, Zhou C, Yang L, Zhang R, Xiao Y, Wu X, Stockigt J, Zeng S, Cheng C H K & Zhao Y 2008 Diarylheptanoids and a monoterpene from the rhizomes of *Zingiber officinale*: antioxidant and cytoprotective properties. Journal of Natural Products 71 (1): 12-17.
- Tripathi A K, Datta K K, Khan A K, Verma M R & Subhasis Mandal 2008 Economic assessment of front line demonstrations of ginger under mild tropical hill conditions of Meghalaya. Environment and Ecology 26 (1A): 444-447.
- Vieira F C & Sarmento S B S 2008 Heat moisture treatment and enzymatic digestibility of Peruvian carrot, sweet potato and ginger starches. Starch/Starke 60 (5): 223-232.
- Xu K, Kang L M, Zheng Y Q & Su H 2008 Changes of carbon and nitrogen nutrition during growth of ginger. Acta Horticulturae 765: 263-268.
- Yang G H, Conner R L, Cai H, Li F & Chen Y Y 2008 First report of rhizome blight of ginger caused by binucleate *Rhizoctonia* AG-R in China. Plant Disease 92 (2): 312.
- Yuan Z & Zhang XueSong 2008 Study on extracting gingerol from ginger by ethyl alcohol. China Condiment 4: 83-85.

### **Large cardamom (*Amomum subulatum* Roxb.)**

- Kaskoos R A, Mir S R, Rent Kapoor & Ali M 2008 Essential oil composition of the fruits of *Amomum subulatum* Roxb. Journal of Essential Oil Bearing Plants 11 (2): 184-187.

### **Mustard (*Brassica* spp.)**

- Ai Xia X, Ma Chao Zhi, Xiao En Shi, Quan Jing Chun, Ma Chang Zhen, Tian Guang Wen, Tu Jin Xing, Fu Ting Dong & Zhang Gai Sheng 2008 Genetic diversity of *Brassica juncea* from Western China. Acta Agronomica Sinica 34 (5): 754-763.
- Ali H & Ansari M S 2008 Efficacy of insecticides against *Lipaphis erysimi* on mustard crop. Journal of Entomological Research 32 (1): 45-47.
- Ansari Z A & Lal M N 2008 Reaction of *Brassica* genotypes to mustard aphid, *Lipaphis erysimi* (Kalt.) infestation. Progressive Agriculture 8 (1): 17-18.
- Ashutosh, Pankaj Kumar, Kumar V D, Sharma P C, Shyam Prakash & Bhat S R 2008 A novel orf108 co-transcribed with the atpA gene is associated with cytoplasmic male sterility in *Brassica juncea* carrying *Moricandia arvensis* cytoplasm. Plant and Cell Physiology 49 (2): 284-289.
- Barrozo M A S, Silva A A M & Oliveira D T 2008 The use of curvature and bias measures to discriminate among equilibrium moisture equations for mustard seed. Journal of Stored Products Research 44 (1): 65-70.
- Barthet V J 2008 (n-7) and (n-9) cis-monounsaturated fatty acid contents of 12 *Brassica* species. Phytochemistry 69 (2): 411-417.

- Beckie H J, Johnson E N, Blackshaw R E & Gan Y 2008 Productivity and quality of canola and mustard cultivars under weed competition. *Canadian Journal of Plant Science* 88 (2): 367-372.
- Beckie H J, Johnson E N, Blackshaw R E & Gan Yan Tai 2008 Weed suppression by canola and mustard cultivars. *Weed Technology* 22 (1): 182-185.
- Bhat S R, Pankaj Kumar & Shyam Prakash 2008 An improved cytoplasmic male sterile (*Diplotaxis berthautii*) *Brassica juncea*: identification of restorer and molecular characterization. *Euphytica* 159 (1/2): 145-152.
- Bong Su C, Ohe M, Harada J & Daimon H 2008 Role of belowground parts of green manure legumes, *Crotalaria spectabilis* and *Sesbania rostrata*, in N uptake by the succeeding tendergreen mustard plant. *Plant Production Science* 11 (1): 116-123.
- Burton W A, Flood R F, Norton R M, Field B, Potts D A, Robertson M J & Salisbury P A 2008 Identification of variability in phenological responses in canola quality *Brassica juncea* for utilisation in Australian breeding programs. *Australian Journal of Agricultural Research* 59 (9): 874-881.
- Cao J, Shelton A M & Earle E D 2008 Sequential transformation to pyramid two Bt genes in vegetable Indian mustard (*Brassica juncea* L.) and its potential for control of diamondback moth larvae. *Plant Cell Reports* 27 (3): 479-487.
- Chand S & Ram D 2008 PSM and Azotobacter population in rhizosphere soil of mustard as influenced by organic and inorganic sources. *Environment and Ecology* 26 (1): 43-46.
- Chaudhary H P, Shahzad Khan & Uttam S K 2008 Effect of nutrient doses and moisture conservation techniques on rainfed mustard in eroded soils of central Uttar Pradesh. *Indian Journal of Soil Conservation* 36 (1): 58-60.
- Chevre A M, Brun H, Eber F, Letanneur J C, Vallee P, Ermel M, Glais I, Li Hua, Sivasithamparam K & Barbetti M J 2008 Stabilization of resistance to *Leptosphaeria maculans* in *Brassica napus*-*B. juncea* recombinant lines and its introgression into spring type *Brassica napus*. *Plant Disease* 92 (8): 1208-1214.
- Choudhary Z A & Sharma D C 2008 Dynamics of pesticide residues in nectar and pollen of mustard (*Brassica juncea* (L.) Czern.) grown in Himachal Pradesh (India). *Environmental Monitoring and Assessment* 144 (1/3): 143-150.
- Clisby A, Verghese M, Cebert E, Walker L T, Field R, Shackelford L, Boateng J, Chawan C B 2008 Canola and mustard seeds/sprouts reduce the formation of aberrant crypt foci in azoxymethane-induced colon cancer in fisher 344 male rats. *Journal of Biological Sciences* 8 (2): 410-415.
- Cooper A J, Latunde Dada A O, Woods Tor A, Lynn J, Lucas J A, Crute I R & Holub E B 2008 Basic compatibility of *Albugo candida* in *Arabidopsis thaliana* and *Brassica juncea* causes broad spectrum suppression of innate immunity. *Molecular Plant Microbe Interactions* 21 (6): 745-756.
- Da Yun Z & Ding Xiao Lin 2008 Studies on the low-salt Chinese potherb mustard (*Brassica juncea*, Coss.) pickle. I - The effect of a homofermentative L(+)-lactic acid producer *Bacillus coagulans* on starter culture in the low-salt Chinese potherb mustard pickle fermentation. *LWT Food Science and Technology* 41 (3): 474-482.
- Debiase G, Rotolo C, Miazzi M, Pollastro S, Verdini L, Mastro G de & Faretra F 2008 Preliminary results on the biofumigant activity of *Brassica juncea* against soilborne fungi. *Giornate Fitopatologiche* 2008, Cervia RA, 12-14 March 2008, Volume-2, 573-580.
- Dehdashti S M & Soleymani A 2008 Heat stress effect on flowering and seed yield in delay cropping of canola (*Brassica napus*, *B. rapa* and *B. juncea*). *Crop Research, Hisar* 35 (3): 210-217.

- Dey D & Akhtar M S 2008 Spatial distribution and population dynamics of mustard aphid (*Lipaphis erysimi*) on Indian mustard (*Brassica juncea*). Indian Journal of Agricultural Sciences 78 (8): 719-722.
- Dutta S, Bhattacharya B K, Rajak D R, Chattopadhyay C, Dadhwal V K, Patel N K, Parihar J S & Verma R S 2008 Modelling regional level spatial distribution of aphid (*Lipaphis erysimi*) growth in Indian mustard using satellite based remote sensing data. International Journal of Pest Management 54 (1): 51-62.
- Ebbs S & Uchil S 2008 Cadmium and zinc induced chlorosis in Indian mustard [*Brassica juncea* (L.) Czern] involves preferential loss of chlorophyll b. Photosynthetica 46 (1): 49-55.
- Goswami G & Sinhamahapatra S P 2008 Effect of siliqua orientation on seed yield and some yield attributes in Indian mustard (*Brassica juncea*). Indian Journal of Agricultural Sciences 78 (6): 554-556.
- Guang Xing S, Chen Jun Chao, Zhang Guo Rong & Zheng Wei Cheng 2008 The research on cultural technique of stem mustard (*Brassica juncea* var. *tsatsai*). Acta Agriculturae Shanghai 24 (1): 133-135.
- Harbaum B, Hubbermann E M, Zhu Zhu Jun & Schwarz K 2008 Free and bound phenolic compounds in leaves of pak choi (*Brassica campestris* L. ssp. *chinensis* var. *communis*) and Chinese leaf mustard (*Brassica juncea* Coss). Food Chemistry 110 (4): 838-846.
- Harbaum B, Hubbermann E M, Zhu ZhuJun & Schwarz K 2008 Impact of fermentation on phenolic compounds in leaves of pak choi (*Brassica campestris* L. ssp. *chinensis* var. *communis*) and Chinese leaf mustard (*Brassica juncea* Coss). Journal of Agricultural and Food Chemistry 56 (1): 148-157.
- Hibi T, Tochihara T, Sagehashi Y, Mori K, Moriwaki J, Yatou O, Hirayae K & Kawata M 2008 Antimicrobial activity of *E.coli* expressed defensin (Bj-AFP1) isolated from *Brassica juncea*. Bulletin of the National Agricultural Research Center 10: 1-8.
- Hugar P G, Anandhi P, Savita Varma & Sarvanan L 2008 Seasonal incidence of important insect pests of mustard and their natural enemies in relation to weather parameters, in Allahabad region. Journal of Entomological Research 32 (2): 109-112.
- Hung Yu L, Chen Shih Wen & Chen Zueng Sang 2008 Pot experiment to study the uptake of Cd and Pb by three Indian mustards (*Brassica juncea*) grown in artificially contaminated soils. International Journal of Phytoremediation 10 (2): 89-103.
- Jain A K, Jitendra Mohan, Sudhir Kumar & Panwar J D S 2008 Comparative study on effect of different levels of nitrogen and weed control methods on mustard. Advances in Plant Sciences 21 (1): 371-372.
- Jin X, Zhang Yu Xiu, Guan Zi Qiu, Wei Wei, Han Lu & Chai Tuan Yao 2008 Expression and function of two dehydrins under environmental stresses in *Brassica juncea* L. Molecular Breeding 21 (4): 431-438.
- Jing Xue W, Li Yong Hu & Liang Chao 2008 Recovery of transgenic plants by pollen mediated transformation in *Brassica juncea*. Transgenic Research 17 (3): 417-424.
- Kaur P, Li C X, Barbetti M J, You M P, Li H & Sivasithamparam K 2008 First report of powdery mildew caused by *Erysiphe cruciferarum* on *Brassica juncea* in Australia. Plant Disease 92 (4): 650.
- Kaur P, Sivasithamparam K & Barbetti M J 2008 Pathogenic behaviour of strains of *Albugo candida* from *Brassica juncea* (Indian mustard) and *Raphanus raphanistrum* (wild radish) in Western Australia. Australasian Plant Pathology 37 (4): 353-356.
- Khan M A, Rabbani M A, Muhammad Munir, Ajmal S K & Malik M A 2008 Assessment of genetic variation within Indian mustard (*Brassica juncea*) germplasm using random amplified polymorphic DNA markers. Journal of Integrative Plant Biology 50 (4): 385-392.
- Khobragade A M, Ramagya Singh, Agashe D R, Ambhore S S & Waghmare C R 2008 Radiation use efficiency in the mustard (*Brassica juncea* L.) as influenced by different sowing dates, plant spacings and genotypes. Journal of Soils and Crops 18 (1): 73-80.



- Khurana M P S, Sadana U S & Chhibba I M 2008 Manganese use efficiency of wheat (*Triticum aestivum* L.) and raya (*Brassica juncea* L.) grown on manganese deficient soils. *Environment and Ecology* 26 (2): 575-578.
- Koundal V, Parida S K, Yadava D K, Arif Ali, Koundal K R & Trilochan Mohapatra 2008 Evaluation of microsatellite markers for genome mapping in Indian mustard (*Brassica juncea* L.). *Journal of Plant Biochemistry and Biotechnology* 17 (1): 69-72.
- Kumar G & Chakravarty N V K 2008 A simple weather based forewarning model for white rust in *Brassica*. *Journal of Agrometeorology* 10 (1): 75-80.
- Kumar G, Tarun Adak, Chakravarty N V K, Srivastava A K & Sharma P K 2008 Effect of debranching on performance of *Brassica*. *Environment and Ecology* 26 (1A): 431-436.
- Kundu C & Rabinarayan Pattanayak 2008 Contribution of different production factors on growth and yield of mustard [*Brassica juncea* (L.) Czern and Coss]. *Journal of Interacademia* 12 (1): 12-15.
- Li C X, Sivasithamparam K, Walton G, Fels P & Barbetti M J 2008 Both incidence and severity of white rust disease reflect host resistance in *Brassica juncea* germplasm from Australia, China and India. *Field Crops Research* 106 (1): 1-8.
- Li C X, Wratten, Salisbury P A, Burton W A, Potter T D, Walton G, Li Hua, Sivasithamparam K, Banga S S, Shashi Banga, Singh D, Liu S Y, Fu T D & Barbetti M J 2008 Response of *Brassica napus* and *B. juncea* germplasm from Australia, China and India to Australian populations of *Leptosphaeria maculans*. *Australasian Plant Pathology* 37 (2): 162-170.
- Li Xiang C, Jiang Min, Zeng Zhi Rui, Du Ai Xue, Tan Hong Ming & Liu Yu Huan 2008 *Trichoderma atroviride* F6 improves phytoextraction efficiency of mustard (*Brassica juncea* (L.) Coss. var. *foliosa* Bailey) in Cd, Ni contaminated soils. *Chemosphere* 71 (9): 1769-1773.
- Lin C, Chai Tuan Yao & Zhang Yu Xiu 2008 Characterization of the novel gene BjDREB1B encoding a DRE-binding transcription factor from *Brassica juncea* L. *Biochemical and Biophysical Research Communications* 371 (4): 702-706.
- Lohia R S 2008 Combining ability analysis in Indian mustard [*Brassica juncea* (L.) Czern and Coss.]. *Plant Archives* 8 (1): 395-397.
- Lone P M, Rahat Nazar, Sarvajeet Singh & Khan N A 2008 Effects of timing of defoliation on nitrogen assimilation and associated changes in ethylene biosynthesis in mustard (*Brassica juncea*). *Biologia Bratislava* 63 (2): 207-210.
- Makeen K, Archana Kumari, Chaurasia A K & Shafeeq Hakeem 2008 Effect of different levels of sulphur application on physiological and the yield behaviour of mustard (*Brassica juncea* L.). *Progressive Research* 3 (1): 53-56.
- Meena P D, Chattopadhyay C & Meena R L 2008 Eco-friendly management of *Alternaria* blight in *Brassica juncea*. *Indian Phytopathology* 61 (1): 65-69.
- Ming Li Y, Liu Xian Jun, Liu Zhong Song, Guan ChunYun, Yuan Mou Zhi & Xiong Xing Hua 2008 Cloning and expression analysis of the dihydroflavonol 4-reductase gene in *Brassica juncea*. *Acta Agronomica Sinica* 34 (1): 1-7.
- Misra A K, Manohar S S, Kumar A & Singh K 2008 Characterization and genetic association in Indian mustard (*Brassica juncea* L. Czern & Coss) germplasm. *Journal of Maharashtra Agricultural Universities* 33 (2): 187-189.
- Nazar R, Khan N A & Anjum N A 2008 ATP sulfurylase activity, photosynthesis, and shoot dry mass of mustard (*Brassica juncea* L.) cultivars differing in sulfur accumulation capacity. *Photosynthetica* 46 (2): 279-282.
- Panjabi P, Arun Jagannath, Bisht N C, Padmaja K L, Sarita Sharma, Vibha Gupta, Pradhan A K & Deepak Pental 2008 Comparative mapping of *Brassica juncea* and *Arabidopsis thaliana* using Intron Polymorphism (IP) markers: homoeologous relationships, diversification and evolution of the A, B and C *Brassica* genomes. *BMC Genomics* 9 (113): (03 March 2008).

- Prem D, Kadambari Gupta, Gautam Sarkar & Abha Agnihotri 2008 Activated charcoal induced high frequency microspore embryogenesis and efficient doubled haploid production in *Brassica juncea*. *Plant Cell, Tissue and Organ Culture* 93 (3): 269-282.
- Pyare R, Kedar Prasad, Sarvind Kumar, Tiwari R K & Sonkar T C 2008 Production potential and economics of lentil (*Lens esculenta*) and mustard (*Brassica juncea*) in mixed and intercropping system. *Plant Archives* 8 (1): 233-236.
- Rajkumar M & Freitas H 2008 Effects of inoculation of plant growth promoting bacteria on Ni uptake by Indian mustard. *Bioresource Technology* 99 (9): 3491-3498.
- Randhawa N & Sharma S K 2008 Control of root-knot nematode (*Meloidogyne incognita*) in nursery beds of tomato by soil amendment with *Brassica rapa*, *Brassica juncea*, *Brassica napus* and *Eruca sativa* plants. *Pakistan Journal of Nematology* 26 (1): 91-96.
- Richards A, Wijesundera C & Salisbury P 2008 Genotype and growing environment effects on the tocopherols and fatty acids of *Brassica napus* and *B. juncea*. *Journal of the American Oil Chemists' Society* 85 (2): 159-168.
- Sankaran R P & Ebbs S D 2008 Transport of Cd and Zn to seeds of Indian mustard (*Brassica juncea*) during specific stages of plant growth and development. *Physiologia Plantarum* 132 (1): 69-78.
- Sarangi P K & Baral S 2008 Relative abundance of bee visitors in mustard crop in Bhubaneswar conditions. *Journal of Plant Protection and Environment* 5 (1): 138-140.
- Seth C S, Chaturvedi P K & Virendra Misra 2008 The role of phytochelatins and antioxidants in tolerance to Cd accumulation in *Brassica juncea* L. *Ecotoxicology and Environmental Safety* 71 (1): 76-85.
- Sharma A, Raju Gupta & Anil Kumar 2008 Effect of sowing methods, nitrogen and sulphur level on growth, yield and oil contents of mustard (*Brassica juncea*). *Plant Archives* 8 (1): 421-424.
- Sharma N & Swati Sharma 2008 Control of foliar diseases of mustard by *Bacillus* from reclaimed soil. *Microbiological Research* 163 (4): 408-413.
- Shekhawat G S, Archana Prasad, Kusum Verma & Astha Sharma 2008 Changes in growth, lipid peroxidation and antioxidant system in seedlings of *Brassica juncea* under cadmium stress. *Biochemical and Cellular Archives* 8 (1): 145-149.
- Shuang Z, Lei Jian Jun, Chen Guo Ju & Cao Bi Hao 2008 Application of kanamycin in transgenic mustard (*Brassica juncea* Coss.). *Hereditas Beijing* 30 (4): 501-507.
- Siddiqui M H, Khan M N, Mohammad F & Khan M M A 2008 Role of nitrogen and gibberellin (GA3) in the regulation of enzyme activities and in osmoprotectant accumulation in *Brassica juncea* L. under salt stress. *Journal of Agronomy and Crop Science* 194 (3): 214-224.
- Singh M, Geeta Singh, Vijendra Kumar & Anshu Dhaka 2008 Combining ability analysis for some metric traits related to seed yield in Indian mustard (*Brassica juncea* (L.) Czern and Coss). *Progressive Agriculture* 8 (1): 57-60.
- Singh N K, Verma O P, Kumar K, Singh R B, Singh H K & Singh A P 2008 Impact of improved technologies on yield and economics of Indian mustard [*Brassica juncea* (L.) Czern & Coss.] at farmers' fields. *Crop Research, Hisar* 35 (1/2): 21-22.
- Singh N, Srivastava A K & Udit Narain 2008 Efficacy of fungicides against *Alternaria* blight of mustard. *International Journal of Plant Sciences Muzaffarnagar* 3 (1): 311-312.
- Singh R S & Harendra Kumar 2008 Effect of different nutrients and cropping-sequences on the incidence of pea leaf miner (*Phytomyza atricornis* Meig.) in mustard. *International Journal of Agricultural Sciences* 4 (1): 192-194.
- Singh R S & Harendra Kumar 2008 Effect of different nutrients and cropping-sequences on the incidence of Bihar hairy caterpillar (*Spilosoma obliquea* Walk.) in mustard crop. *Asian Journal of Bio Science* 3 (1): 41-43.

- Singh V, Matadin Lodhi & Verma N K 2008 Effect of phosphorus and sulphur levels on growth and yield of mustard (*Brassica juncea* Coss) variety 'Varuna'. *Agricultural Science Digest* 28 (1): 59-60.
- Sirohi S P S, Gaurav S S, Sanjai Malik, Sandeep Sirohi & Meenakshi 2008 Correlation and path analysis of Indian mustard (*Brassica juncea* [L.] Czern and Coss). *Progressive Agriculture* 8 (1): 89-92.
- Srinivasakannan C 2008 Modeling drying kinetics of mustard in fluidized bed. *International Journal of Food Engineering* 4 (3): Article 6.
- Szmigielski A M, Schoenau J J, Irvine A & Schilling B 2008 Evaluating a mustard root length bioassay for predicting crop injury from soil residual flucarbazone. *Communications in Soil Science and Plant Analysis* 39 (3/4): 413-420.
- Traw M B & Feeny P 2008 Glucosinolates and trichomes track tissue value in two sympatric mustards. *Ecology* 89 (3): 763-772.
- Tripathi M K, Diwan Singh, Rao V U M & Tyagi P K 2008 Effect of planting time and in-season growth manipulation on seed yield and its attributes in Indian mustard (*Brassica juncea*). *Indian Journal of Agricultural Sciences* 78 (6): 551-553.
- Tze Soo L, Chitra T R, Tay Boon Hui, Pua Eng Chong & Yu Hao 2008 Molecular characterization of Arabidopsis and *Brassica juncea* Cu/Zn superoxide dismutases reveals their regulation of shoot regeneration. *Journal of Plant Growth Regulation* 27 (2): 99-109.
- Verma K, Shekhawat G S, Astha Sharma, Mehta S K & Sharma V 2008 Cadmium induced oxidative stress and changes in soluble and ionically bound cell wall peroxidase activities in roots of seedling and 3-4 leaf stage plants of *Brassica juncea* (L.) Czern. *Plant Cell Reports* 27 (7): 1261-1269.
- Verma O P, Ram Bhajan, Kumar K, Singh H K & Singh N K 2008 Varietal adaptability of Indian mustard under saline sodic soils. *Crop Research, Hisar* 35 (1/2): 88-90.
- Wijesundera C, Ceccato C, Fagan P & Shen Zhi Ping 2008 Seed roasting improves the oxidative stability of canola (*B. napus*) and mustard (*B. juncea*) seed oils. *European Journal of Lipid Science and Technology* 110 (4): 360-367.
- Wijesundera C, Ceccato C, Fagan P, Shen Zhi Ping, Burton W & Salisbury P 2008 Canola quality Indian mustard oil (*Brassica juncea*) is more stable to oxidation than conventional canola oil (*Brassica napus*). *Journal of the American Oil Chemists' Society* 85 (8): 693-699.
- Xia Fang S, Jiang Chun Yu & He Lin Yan 2008 Characterization of plant growth promoting *Bacillus edaphicus* NBT and its effect on lead uptake by Indian mustard in a lead-amended soil. *Canadian Journal of Microbiology* 54 (5): 417-422.
- Xiao Hua Q, Yang Jing Hua & Zhang Ming Fang 2008 AFLP based genetic diversity assessment among Chinese vegetable mustards (*Brassica juncea* (L.) Czern.). *Genetic Resources and Crop Evolution* 55 (5): 705-711.
- Zhen X, Wang Qiao Mei, Guo Yan Ping, Guo De Ping, Shah G A, Liu Hai Lin & Mao Aining 2008 Stem swelling and photosynthate partitioning in stem mustard are regulated by photoperiod and plant hormones. *Environmental and Experimental Botany* 62 (2): 160-167.
- Zhong Xiang F, Hu Yu Xia, Liu Dong Hong, Chen Jian Chu & Ye Xing Qian 2008 Changes of phenolic acids and antioxidant activities during potherb mustard (*Brassica juncea* Coss.) pickling. *Food Chemistry* 108 (3): 811-817.

### **Nutmeg (*Myristica fragrans* Houtt.)**

- Krishnamurthy K S, Rema J, Mathew P A & Krishnamoorthy B 2008 Identification of suitable *Myristica* species/related taxa as rootstock to combat drought in nutmeg. *Indian Journal of Horticulture* 65 (2): 204-208.

Maeda A, Tanimoto S, Abe T, Kazama S, Tanizawa H & Nomura M 2008 Chemical constituents of *Myristica fragrans* Houttuyn seed and their physiological activities. *Yakugaku Zasshi* (Journal of the Pharmaceutical Society of Japan) 128 (1): 129-133.

Newmaster S G, Fazekas A J, Steeves R A D & Janovec J 2008 Testing candidate plant barcode regions in the Myristicaceae. *Molecular Ecology Resources* 8 (3): 480-490.

### **Origano (*Origanum* spp.)**

Aslim B & Yucel N 2008 In vitro antimicrobial activity of essential oil from endemic *Origanum minutiflorum* on ciprofloxacin resistant *Campylobacter* spp. *Food Chemistry* 107 (2): 602-606.

Bayramoglu B, Sahin S & Sumnu G 2008 Solvent free microwave extraction of essential oil from oregano. *Journal of Food Engineering* 88 (4): 535-540.

Bendahou M, Muselli A, Grignon Dubois M, Benyoucef M, Desjobert J M, Bernardini A F & Costa J 2008 Antimicrobial activity and chemical composition of *Origanum glandulosum* Desf. essential oil and extract obtained by microwave extraction: comparison with hydrodistillation. *Food Chemistry* 106 (1): 132-139.

Booth D Y J, Sinha A, Galasso K E & Havkin Frenkel D 2008 Discoloration of oregano post distillation left over leaf extract. *Acta Horticulturae* 778: 93-96.

Cleff M B, Meinerz A R M, Schuch L F D, Rodrigues M R A, Meireles M C A & Mello J R B 2008 In vitro activity of the essential oil of *Origanum vulgare* against *Sporothrix schenckii*. *Arquivo Brasileiro de Medicina Veterinária e Zootecnia* 60 (2): 513-516.

Dragoeva A P, Nanova Z D & Kalcheva V K 2008 Allelopathic activity of micropropagated *Origanum vulgare* ssp. *hirtum* and its effect on mitotic activity. *Allelopathy Journal* 22 (1): 131-142.

Dudai N 2008 Optimization and improvement of phenolic monoterpenes production in oregano (*Origanum* spp.). *Acta Horticulturae* 778: 15-27.

Fortunato I M & Avato P 2008 Plant development and synthesis of essential oils in micropropagated and mycorrhiza inoculated plants of *Origanum vulgare* L. ssp. *hirtum* (Link) Ietswaart. *Plant Cell, Tissue and Organ Culture* 93 (2): 139-149.

Kzl S, Ipek A, Arslan N & Khawar K M 2008 Effect of different developing stages on some agronomical characteristics and essential oil composition of oregano (*Origanum onites*). *New Zealand Journal of Crop and Horticultural Science* 36 (1): 71-76.

Marcincak S, Cabadaj R, Popelka P & Soltysova L 2008 Antioxidative effect of oregano supplemented to broilers on oxidative stability of poultry meat. *Slovenian Veterinary Research* 45 (2): 61-66.

Novak J, Lukas B, Bolzer K, Grausgruber Groger S & Degenhardt J 2008 Identification and characterization of simple sequence repeat markers from a glandular *Origanum vulgare* expressed sequence tag. *Molecular Ecology Resources* 8 (3): 599-601.

Radusiene J, Ivanauskas L, Janulis V & Jakstas V 2008 Composition and variability of phenolic compounds in *Origanum vulgare* from Lithuania. *Biologija* 54 (1): 45-49.

Skoula M, Grayer R J, Kite G C & Veitch N C 2008 Exudate flavones and flavanones in *Origanum* species and their interspecific variation. *Biochemical Systematics and Ecology* 36 (8): 646-654.

### **Parsley (*Petroselinum* spp.)**

Dreux N, Albagnac C, Sleator R D, Hill C, Carlin F, Morris C E & Nguyen C 2008 Glycine betaine improves *Listeria monocytogenes* tolerance to desiccation on parsley leaves independent of the osmolyte transporters BetL, Gbu and OpuC. *Journal of Applied Microbiology* 104 (4): 1221-1227.

Finger F L, Alvares V de S, Silva J R da, Calestine C & Casali V W D 2008 Influence of postharvest water replacement on shelf life of parsley leaves. *Journal of Food, Agriculture and Environment* 6 (2): 116-118.

- Garajova S, Flodrova D, Ait Mohand F, Farkas V & Stratilova E 2008 Characterization of two partially purified xyloglucan endotransglycosylases from parsley (*Petroselinum crispum*) roots. *Biologia Bratislava* 63 (3): 313-319.
- Kaniszewski S & Dysko J 2008 Effect of drip irrigation and cultivation methods on the yield and quality of parsley roots. *Journal of Elementology* 13 (2): 235-244.
- Luthria D L 2008 Influence of experimental conditions on the extraction of phenolic compounds from parsley (*Petroselinum crispum*) flakes using a pressurized liquid extractor. *Food Chemistry* 107 (2): 745-752.
- Petropoulos S A, Daferera D, Polissiou M G & Passam H C 2008 The effect of water deficit stress on the growth, yield and composition of essential oils of parsley. *Scientia Horticulturae* 115 (4): 393-397.
- Peyvast G, Olfati J A, Madeni S, Forghani A & Samizadeh H 2008 Vermicompost as a soil supplement to improve growth and yield of parsley. *International Journal of Vegetable Science* 14 (1): 82-92.
- Rosa D D, Ohto C T, Basseto M A, Souza N L de & Furtado E L 2008 Brazil, a new location for powdery mildew on parsley and fenchel plants. *Plant Pathology* 57 (2): 373.
- Tian T, Liu H Y & Koike S T 2008 First report of *Apium virus* Y on cilantro, celery, and parsley in California. *Plant Disease* 92 (8): 1254.
- Zarate N A H, Vieira M do C, Rech J, Quast A, Pontim B C A & Gassi R P 2008 Yield and gross income of arracacha in monocrop and intercropping with the Japanese bunching onion and parsley. *Horticultura Brasileira* 26 (2): 287-291.

### **Rosemary (*Rosmarinus officinalis* L.)**

- Arslan D & Ozcan M M 2008 Evaluation of drying methods with respect to drying kinetics, mineral content and colour characteristics of rosemary leaves. *Energy Conversion and Management* 49 (5): 1258-1264.
- Bandara M, Scharf F, Calderon J & Mirza M 2008 Impact of frost on crop growth and diterpene content of rosemary (*Rosmarinus officinalis* L.). *Acta Horticulturae* 765: 225-234.
- Colakovic S 2008 The goodness of nature on your table. Natural antioxidants: Rosemary extracts. *NutraCos* 7 (3): 32-33.
- Erkan N, Ayranci G & Ayranci E 2008 Antioxidant activities of rosemary (*Rosmarinus officinalis* L.) extract, blackseed (*Nigella sativa* L.) essential oil, carnosic acid, rosmarinic acid and sesamol. *Food Chemistry* 110 (1): 76-82.
- Gregori A, Pahor B & Pohleven F 2008 Use of rosemary (*Rosmarinus officinalis*) processing waste for *Pleurotus ostreatus* cultivation. *Acta Edulis Fungi* 15 (2): 15-19.
- Herrera J G A, Chacon Pardo E & Lusardo Rodriguez S 2008 Effect of two substrates and different irrigation levels in the propagation of rosemary (*Rosmarinus officinalis* L.). *Revista UDCA Actualidad and Divulgacion Cientifica* 11 (1): 103-111.
- Isman M B, Wilson J A & Bradbury R 2008 Insecticidal activities of commercial rosemary oils (*Rosmarinus officinalis*) against larvae of *Pseudaletia unipuncta* and *Trichoplusia ni* in relation to their chemical compositions. *Pharmaceutical Biology* 46 (1/2): 82-87.
- Jones D R H, Barnes A V & Lane C R 2008 First report of the downy mildew *Peronospora lamii* on *Salvia officinalis* and *Rosmarinus officinalis* in the UK. *Plant Pathology* 57 (2): 372.
- Karabacak S & Bozkurt H 2008 The effect of *Salvia officinalis* L. and *Rosmarinus officinalis* L. on the ripening of sucuk. *Fleischwirtschaft* 88 (2): 103-108.
- Keokamnerd T, Acton J C, Han I Y & Dawson P L 2008 Effect of commercial rosemary oleoresin preparations on ground chicken thigh meat quality packaged in a high oxygen atmosphere. *Poultry Science* 87 (1): 170-179.

- Kolar M H 2008 Rosemary extract, INOLENSReg. where nature and science meet. *Acta Horticulturae* 778: 37-43.
- Orhan I, Aslan S, Kartal M, Sener B & Baser K H C 2008 Inhibitory effect of Turkish *Rosmarinus officinalis* L. on acetylcholinesterase and butyrylcholinesterase enzymes. *Food Chemistry* 108 (2): 663-668.
- Rjoob A W O El , Massadeh A M & Omari M N 2008 Evaluation of Pb, Cu, Zn, Cd, Ni and Fe levels in *Rosmarinus officinalis*, Labaiatae (rosemary) medicinal plant and soils in selected zones in Jordan. *Environmental Monitoring and Assessment* 140 (1/3): 61-68.
- Sassella A, Caccia M, Tettamanti C, Conti A & Jermini M 2008 *Rosmarinus officinalis* L.: a comparison of Ticino clones. *Revue Suisse de Viticulture, Arboriculture et Horticulture* 40 (2): 117-123.
- Souza C R F, Schiavetto I A, Thomazini F C F & Oliveira W P 2008 Processing of *Rosmarinus officinalis* Linn. extract on spray and spouted bed dryers. *Brazilian Journal of Chemical Engineering* 25 (1): 59-69.
- Tounekti T, Vadel A M, Bedoui A & Khemira H 2008 NaCl stress affects growth and essential oil composition in rosemary (*Rosmarinus officinalis* L.). *Journal of Horticultural Science and Biotechnology* 83 (2): 267-273.
- Turker L 2008 Quantum chemical treatment of some compounds of rosemary extracts. *Phytopharmacology and therapeutic values II* 445-453.
- Varban D I, Duda M M, Varban R, Muntean S & Cincas C 2008 Research regarding the influence of the nutrition space and the sub layer at *Rosmarinus officinalis* L. species. *Hop and Medicinal Plants* 16 (1/2): 171-176.
- Waszkowiak K 2008 Antioxidative activity of rosemary extract using connective tissue proteins as carriers. *International Journal of Food Science and Technology* 43 (8): 1437-1442.
- Zaouali Y & Boussaid M 2008 Isozyme markers and volatiles in Tunisian *Rosmarinus officinalis* L. (*Lamiaceae*): a comparative analysis of population structure. *Biochemical Systematics and Ecology* 36 (1): 11-21.

### **Saffron (*Crocus sativus* L.)**

- Aytekin A & Acikgoz A O 2008 Hormone and microorganism treatments in the cultivation of saffron (*Crocus sativus* L.) plants. *Molecules* 13 (5): 1135-1147.
- Behdani M A, Koochehi A, Rezvani P & Al Ahmadi M J 2008 Agro-ecological zoning and potential yield of saffron in Khorasan Iran. *Journal of Biological Sciences* 8 (2): 298-305.
- Behdani M A, Mahallati M N & Koochehi A 2008 Evaluation of irrigation management of saffron at agroecosystem scale in dry region of Iran. *Asian Journal of Plant Sciences* 7 (1): 22-25.
- Eldin M S, Elkholy S, Fernandez J A, Junge H, Cheetham R, Guardiola J & Weathers P 2008 *Bacillus subtilis* FZB24Reg. affects flower quantity and quality of saffron (*Crocus sativus*). *Planta Medica* 74 (10): 1316-1320.
- Gresta F, Lombardo G M, Siracusa L & Ruberto G 2008 Effect of mother corm dimension and sowing time on stigma yield, daughter corms and qualitative aspects of saffron (*Crocus sativus* L.) in a Mediterranean environment. *Journal of the Science of Food and Agriculture* 88 (7): 1144-1150.
- Gresta F, Lombardo G M, Siracusa L & Ruberto G 2008 Saffron, an alternative crop for sustainable agricultural systems. A review. *Agronomy for Sustainable Development* 28 (1): 95-112.
- Keyhani E & Keyhani J 2008 Effect of copper and glucose on root development and corm anti oxidative stress enzymes activity in saffron (*Crocus sativus* L.). *Acta Horticulturae* 779: 677-687.
- Mesgaran M B, Mashhadi H R, Khosravi M, Zand E & Mohammad Alizadeh H 2008 Weed community response to saffron black zira intercropping. *Weed Science* 56 (3): 400-407.

- Sanchez A M, Carmona M, Ordoudi S A, Tsimidou M Z & Alonso G L 2008 Kinetics of individual crocetin ester degradation in aqueous extracts of saffron (*Crocus sativus* L.) upon thermal treatment in the dark. *Journal of Agricultural and Food Chemistry* 56 (5): 1627-1637.
- Termentzi A & Kokkalou E 2008 LC-DAD-MS (ESI) analysis and antioxidant capacity of *Crocus sativus* petal extracts. *Planta Medica* 74 (5): 573-581.
- Yang C, Zhang Hao, Tian Xi, Zhao Can, Cai Le, Liu Ying, Jia Lin, Yin Hong Xiang & Chen Chu 2008 Antioxidant potential of crocins and ethanol extracts of *Gardenia jasminoides* ELLIS and *Crocus sativus* L.: a relationship investigation between antioxidant activity and crocin contents. *Food Chemistry* 109 (3): 484-492.
- Zohan A A, Kamgar Haghighi A A & Sepaskhah A R 2008 Crop and pan coefficients for saffron in a semi-arid region of Iran. *Journal of Arid Environments* 72 (3): 270-278.

### **Tamarind (*Tamarindus indica* L.)**

- Abukakar M G, Ukwuani A N & Shehu R A 2008 Phytochemical screening and antibacterial activity of *Tamarindus indica* pulp extract. *Asian Journal of Biochemistry* 3 (2): 134-138.
- Bhosale D M, Purane B B & Latake S B 2008 Effect of VA-mycorrhizal inoculation on growth of tamarind seedlings. *Agricultural Science Digest* 28 (1): 42-44.
- Bhosale D M, Purane B B & Latake S B 2008 Effect of VA-mycorrhizal inoculation on growth parameters of tamarind seedlings. *Journal of Maharashtra Agricultural Universities* 33 (2): 204-206.
- Jarimopas B, Rachanukroa D, Singh S P & Sothornvit R 2008 Post-harvest damage and performance comparison of sweet tamarind packaging. *Journal of Food Engineering* 88 (2): 193-201.
- Kumar C S & Sila Bhattacharya 2008 Tamarind seed: properties, processing and utilization. *Critical Reviews in Food Science and Nutrition* 48 (1): 1-20.
- Kumudha P 2008 Studies on the effect of biofertilizers on the germination of *Tamarindus indica* Linn. *Biochemical and Cellular Archives* 8 (1): 11-14.
- Marcus S E, Verhertbruggen Y, Herve C, Ordaz Ortiz J J, Farkas V, Pedersen H L, Willats W G T Z & Knox J P 2008 Pectic homogalacturonan masks abundant sets of xyloglucan epitopes in plant cell walls. *BMC Plant Biology* 8 (60): (22 May 2008).
- Rao D H & Gowda L R 2008 Abundant class III acidic chitinase homologue in tamarind (*Tamarindus indica*) seed serves as the major storage protein. *Journal of Agricultural and Food Chemistry* 56 (6): 2175-2182.
- Singh S, Singh A K & Joshi H K 2008 Genetic variability for floral traits and yield attributes in tamarind. *Indian Journal of Horticulture* 65 (3): 328-331.
- Ukwuani A N, Abukakar M G, Shehu R A & Hassan L G 2008 Antiobesity effects of pulp extract *Tamarindus indica* in albino rat. *Asian Journal of Biochemistry* 3 (4): 221-227.
- Yang Shi Yu, He Cheng Zhong, Zhao Yi He, Liu Juan & Wang Bing Yi 2008 Analysis of the genetic diversity of sweet Thai tamarind introduced from Thailand based on RAPD markers. *Forest Research, Beijing* 21 (1): 60-63.
- Yan Xian Y, Liao Cheng Fei, Sha Yu Cang, Ji Zhong Hua, Fang Hai Dong, Pan Zhi Xian & Feng Guang Heng 2008 High efficiency complementary technology for double chain eco-agricultural model of *Tamarindus indica* forage grass goat on dry slope lands of Yuanmou Dry Hot Valley. *Zhongguo Shengtai Nongye Xuebao/Chinese Journal of Eco-Agriculture* 16 (2): 464-468.

**Thyme (*Thymus vulgaris* L.)**

- Al Bayati F A 2008 Synergistic antibacterial activity between *Thymus vulgaris* and *Pimpinella anisum* essential oils and methanol extracts. *Journal of Ethnopharmacology* 116 (3): 403-406.
- Azizi M, Mosavi A & Nazdar T 2008 Extraction methods affect allelopathic activity of peppermint and thyme extracts on weed seed germination. *Acta Horticulturae* 767: 97-104.
- Dawidowicz A L, Rado E, Wianowska D, Mardarowicz M & Gawdzik J 2008 Application of PLE for the determination of essential oil components from *Thymus vulgaris* L. *Talanta* 76 (4): 878-884.
- El Azim M W A & El Gawad A M A 2008 Effect of treatment with tryptophan and yeast on soil microbial activities, growth and productivity of *Thymus vulgaris* L. under middle Sinai conditions. *Annals of Agricultural Science Cairo* 53 (1): 105-116.
- Golmakani M T & Rezaei K 2008 Comparison of microwave assisted hydrodistillation with the traditional hydrodistillation method in the extraction of essential oils from *Thymus vulgaris* L. *Food Chemistry* 109 (4): 925-930.
- Gorur G, Abdullah M I & Isk M 2008 Insecticidal activity of the *Thymus*, *Veronica* and *Agrimonia's* essential oils against the cabbage aphid, *Brevicoryne brassicae*. *Acta Phytopathologica et Entomologica Hungarica* 43 (1): 201-208.
- Gowda M C & Prasad B L S 2008 Effect of growth regulators and methods of application on rooting of Thyme (*Thymus vulgaris* L.) cuttings. *Mysore Journal of Agricultural Sciences* 42 (1): 9-14.
- Li M, Yao Lei, Wu Ya Ni & Zhang Yan Ling 2008 Comparison on botanical characters and composition of essential oil of two varieties of thyme. *Journal of Shanghai Jiaotong University Agricultural Science* 26 (2): 150-152, 160.
- Ling W & Su Han Ying 2008 Shoot cutting propagation of four species of *Thymus* genus in Heilongjiang Province. *Journal of Northeast Forestry University* 36 (1): 12-13, 30.
- Omidbaigi R, Kazemi S & Daneshfar E 2008 Harvest time effecting on the essential oil content and compositions of *Thymus vulgaris*. *Journal of Essential Oil Bearing Plants* 11 (2): 162-167.

**Turmeric (*Curcuma* spp.)**

- Agrawal A, Mahalakshmi C & Tyagi R K 2008 Use of commercial sugar, isabgol and ordinary water in culture medium for conservation of *Curcuma longa* L. *Journal of Plant Biochemistry and Biotechnology* 17 (1): 85-89.
- Bin Qiang T, Wang Zhi Ping, Zhao Ying Mei, Wang De Gui, Li Yong Gang, Ma Li, Li Xiao Ming, Li Jing, Xiao Nan, Tian Jun Qiang & Rodriguez R 2008 Effects of curcumin on bladder cancer cells and development of urothelial tumors in a rat bladder carcinogenesis model. *Cancer Letters* 264 (2): 299-308.
- Bose P, Sanyal D & Majumdar K 2008 Balancing sulfur and magnesium nutrition for turmeric and carrot grown on red lateritic soil. *Better Crops with Plant Food* 92 (1): 23-25.
- Cousins M M & Adelberg J W 2008 Short-term and long-term time course studies of turmeric (*Curcuma longa* L.) microrhizome development in vitro. *Plant Cell, Tissue and Organ Culture* 93 (3): 283-293.
- Dhatt A S, Sadhna Arora, Neena Chawla, Sidhu A S & Naveen Garg 2008 Evaluation of elite turmeric (*Curcuma longa*) clones for growth, yield and quality attributes. *Indian Journal of Agricultural Sciences* 78 (7): 589-591.
- Dhatt A S, Sidhu A S & Naveen Garg 2008 Effect of planting material on plant growth, yield and rhizome size of turmeric. *Indian Journal of Horticulture* 65 (2): 193-195.
- Gowda N K S, Ledoux D R, Rottinghaus G E, Bermudez A J & Chen Y C 2008 Efficacy of turmeric (*Curcuma longa*), containing a known level of curcumin, and a hydrated sodium calcium aluminosilicate to ameliorate the adverse effects of aflatoxin in broiler chicks. *Poultry*



- Science 87 (6): 1125-1130.
- Gutowicz M, Choojczyk M, Pyrzanowska J, Widy Tyszkiewicz E & Baranczyk Kuzma A 2008 Effect of curcumin on antioxidant and detoxification mechanisms in the livers of aging rats. *Medycyna Weterynaryjna* 64 (7): 955-957.
- Hegge A B, Schuller R B, Kristensen S & Tonnesen H H 2008 In vitro release of curcumin from vehicles containing alginate and cyclodextrin. *Studies of curcumin and curcuminoides. XXXIII. Pharmazie* 63 (8): 585-592.
- Hossain M A, Yamawaki K, Akamine H & Ishimine Y 2008 Weed infestation in turmeric in Okinawa, Japan. *Weed Technology* 22 (1): 56-62.
- Hseu S H, Sung C J, Gao R L, Chen B S & Lin C Y 2008 Occurrence of leaf blight of turmeric caused by *Acidovorax avenae* subsp. *avenae* in Taiwan. *Plant Pathology Bulletin* 17 (1): 43-52.
- Jirali D I, Hiremath S M, Chetti M B & Patil S A 2008 Biophysical, biochemical, parameters, yield and quality attributes affected by plant growth regulators in turmeric. *Plant Archives* 8 (1): 275-278.
- Kandiannan K & Chandaragiri K K 2008 Monetary and non-monetary inputs on turmeric growth, nutrient uptake, yield and economics under irrigated condition. *Indian Journal of Horticulture* 65 (2): 209-213.
- Khaunkuab N, Suwunnalert S, Chotiphan R, Namphech L, Sinphai J & Chaiburi J 2008 Study on intercropping system between turmeric (*Curcuma longa* Linn.) in para rubber and fruit plantation on upper southern area. *Proceedings of the 46<sup>th</sup> Kasetsart University Annual Conference, Kasetsart, 29 January-1 February, 2008 Subject: Plants, 373-379.*
- Kochhar S & Kochhar V K 2008 Identification and characterization of a super stable Cu-Zn SOD from leaves of turmeric (*Curcuma longa* L.). *Planta* 228 (2): 307-318.
- Li Yao W, Zhang Mian, Zhang Chao Feng & Wang Zheng Tao 2008 Alkaloid and sesquiterpenes from the root tuber of *Curcuma longa*. *Acta Pharmaceutica Sinica* 43 (7): 724-727.
- Li Yao W, Zhang Mian, Zhang Chao Feng & Wang Zheng Tao 2008 Diaryl derivatives from the root tuber of *Curcuma longa*. *Biochemical Systematics and Ecology* 36 (5/6): 476-480.
- Mandal V, Yogesh Mohan & Siva Hemalatha 2008 Microwave assisted extraction of curcumin by sample solvent dual heating mechanism using Taguchi L9 orthogonal design. *Journal of Pharmaceutical and Biomedical Analysis* 46 (2): 322-327.
- Moharana R L, Chatterjee R & Basu A K 2008 Characterization of mango ginger (*Curcuma amada* Roxb.) collections through morphological and rhizome characters. *Environment and Ecology* 26 (2): 650-653.
- Nawalagatti C M, Surendra P, Chetti M B & Hiremath S M 2008 Influence of sulphur on morpho-physiological traits, yield and quality attributes in turmeric. *International Journal of Plant Sciences Muzaffarnagar* 3 (1): 78-81.
- Niranjan A & Dhan Prakash 2008 Chemical constituents and biological activities of turmeric (*Curcuma longa* L.) - a review. *Journal of Food Science and Technology Mysore* 45 (2): 109-116.
- Pal A, Mita Ghosh & Pal A K 2008 Role of turmeric in ultraviolet induced genotoxicity in a bacterial system. *Natural Product Communications* 3 (2): 227-228.
- Rui W, Xu Ying, Wu Hong Li, Li Ying Bo, Li Yu Hua, Guo Jia Bin & Li Xue Jun 2008 The antidepressant effects of curcumin in the forced swimming test involve 5-HT<sub>1</sub> and 5-HT<sub>2</sub> receptors. *European Journal of Pharmacology* 578 (1): 43-50.
- Shishu I P K 2008 Antimutagenicity of curcumin and related compounds against genotoxic heterocyclic amines from cooked food: the structural requirement. *Food Chemistry* 111 (3): 573-579.

- Shokouhi B, Norizadeh E, Germi K G & Navid S L 2008 In vitro comparison of the antimicrobial effect of turmeric and cinnamon water and ether extracts on the growth rate of *Helicobacter pylori*. Research Journal of Biological Sciences 3 (4): 408-412.
- Skornickova J L, Sida O, Wijesundara S & Marhold K 2008 On the identity of turmeric: the typification of *Curcuma longa* L. (*Zingiberaceae*). Botanical Journal of the Linnean Society 157 (1): 37-46.
- Ushamailini C, Nakkeeran S & Marimuthu T 2008 Development of bio-manure for the management of turmeric rhizome rot. Archives of Phytopathology and Plant Protection 41 (5): 365-376.
- Ushamailini C, Nakkeeran P & Marimuthu T 2008 Induction of plant defence enzymes in turmeric plants by *Trichoderma viride*. Archives of Phytopathology and Plant Protection 41 (2): 79-93.
- Velmurugan M, Chezhiyan N & Jawaharlal M 2008 Correlation and path analysis in turmeric cv. BSR-2. International Journal of Agricultural Sciences 4 (1): 103-106.
- Velmurugan M, Chezhiyan N & Jawaharlal M 2008 Influence of organic manures and inorganic fertilizers on cured rhizome yield and quality of turmeric (*Curcuma longa* L.) cv. BSR-2. International Journal of Agricultural Sciences 4 (1): 142-145.
- Wiwatpinyo J & Detpiratmongkol S 2008 Effect of different irrigation regimes on turmeric growth. Proceedings of the 46<sup>th</sup> Kasetsart University Annual Conference, Kasetsart, 29 January-1 February, 2008 Subject: Plants, 473-480.

### **Vanilla (*Vanilla planifolia* Andrews)**

- Ali L, Perfetti G & Diachenko G 2008 Rapid method for the determination of coumarin, vanillin, and ethyl vanillin in vanilla extract by reversed-phase liquid chromatography with ultraviolet detection. Journal of AOAC International 91 (2): 383-386.
- Bory S, Grisoni M, Duval M F & Besse P 2008 Biodiversity and preservation of vanilla: present state of knowledge. Genetic Resources and Crop Evolution 55 (4): 551-571.
- Bory S, Silva D da, Risterucci A M, Grisoni M, Besse P & Duval M F 2008 Development of microsatellite markers in cultivated vanilla: polymorphism and transferability to other vanilla species. Scientia Horticulturae 115 (4): 420-425.
- Buccellato F 2008 There's nothing 'plain' about vanilla: the misconceptions and popularity surrounding vanilla. Perfumer and Flavorist 33 (3): 36-38.
- Janarthanam B & Seshadri S 2008 Plantlet regeneration from leaf derived callus of *Vanilla planifolia* Andr. In Vitro Cellular and Developmental Biology Plant 44 (2): 84-89.
- Kahane R, Besse P, Grisoni M, Bellec F le & Odoux E 2008 Bourbon vanilla: natural flavour with a future. Chronica Horticulturae 48 (2): 23-29.
- Marquez O, Waliszewski K N, Oliart R M & Pardio V T 2008 Purification and characterization of cell wall bound peroxidase from vanilla bean. LWT Food Science and Technology 41 (8): 1372-1379.
- Minoo D, Jayakumar V N, Veena S S, Vimala J, Basha A, Saji K V, Babu K N & Peter K V 2008 Genetic variations and interrelationships in *Vanilla planifolia* and few related species as expressed by RAPD polymorphism. Genetic Resources and Crop Evolution 55 (3): 459-470.
- Minoo D, Pillai G S, Babu K N & Peter K V 2008 Isolation and fusion of protoplasts in *Vanilla* species. Current Science 94 (1): 115-120.
- Nelson E A & Sage R F 2008 Functional constraints of CAM leaf anatomy: tight cell packing is associated with increased CAM function across a gradient of CAM expression. Journal of Experimental Botany 59 (7): 1841-1850.
- Vanitha K, Karuppuchamy P, Sivasubramaniam P 2008 Comparative effectiveness of bait traps against the giant African snail, *Achatina fulica* attacking vanilla. Annals of Plant Protection Sciences 16 (1): 221-222.