

## Piper barberi gamble - a redescription of the species with a note on the karyotype

K NIRMAL BABU, R RAMAKRISHNAN NAIR, JOHNSON K GEORGE  
& P N RAVINDRAN

National Research Centre for Spices  
Marikunnu P.O., Calicut 673 012

### ABSTRACT

*P. barberi* was described by Gamble (1924) based on the male plants only. Here the species is being redescribed based on the female plant characters as well. *P. barberi* is a unique species among the *Piper* taxa occurring in South India. The somatic chromosome number of *P. barberi* was determined to be  $2n = 52$ .

Key words: *Piper barberi*, South Indian *Piper*, karyomorphology.

The genus *Piper* is represented by about 14 species in South India, distributed mainly in the tropical evergreen and moist deciduous forests of the Western Ghats. This region is also the centre of diversity for the species *P. nigrum*, the black pepper of commerce. Gamble in his floristic study of the region described 13 species including *P. barberi*, while another species was added later (Ravindran, Nair & Nair, 1987). A systematic survey of the region by the National Research Centre for Spices (NRCS) led to the collection of *Piper barberi*, a species reported to be almost extinct. *P. barberi* was erected by Gamble (1924) based on the collection of

Barber from the Tinnevely forests of South India. Barber's collection consisted of only specimens from male plant, and Gamble's description of the species was based only on such specimens. An attempt was made by Subramaniam and Henry (1970) to describe the female specimens of *P. barberi*. However the descriptions is not complete with regard to habit and other morphological details, especially the juvenile branches of the species. Here the species is redescribed based on the live specimens available at the NRCS germplasm conservatory.

*P. barberi* Gamble, Kew Bull. 387, 1924

Perennis repens, glaberrima, dioecia, ramosa, polymorpha, cujus juveniles surculi sunt tenues persistenter squamatis foliis praediti, orthotropici aut reculi cum parvis foliis 5-7 cm in longitudinem, 2-3 cm in latitudinem, fructiferi rami cum collis 8-12 cm in longitudinem, 2-5 cm in latitudinem, glabrosi, lanceolati, summitas acumata, basis inaequaliter acuta, pinnate reticulata. Males spicae angustae, 7-10 cm in longitudinem, feminae spicae 4-7 cm, cylindricae, pendulosae, longo et tenui pedunculo suffultae, bractae peltatae, orbiculares, ovarium 0.5-1.0 mm, sessile monocellularis mono-ovularis, stigma cum triplici nervatione, papillata, stylus O, fructus carnosus, drupaceus, 5-6 mm transversus, ruber cum maturescit, semina 2-3 mm, ovoida (oviformia).

***Piper barberi* Gamble, Kew Bull. 387, 1924**

A very distinct species among the south Indian *Piper* having reticulately veined leaves and spikes borne on slender, long dangling peduncle.

A perennial climber, glabrous, dioecious, branching polymorphic, juvenile shoots

slender with persistent scale leaves, orthotropic shoots with small leaves, 5-7 cm long, 2-3 cm broad, fruiting branches with leaves 8-12 cm long, 2-5 cm broad, glabrous lanceolate, tip acuminate, base unequally acute, pinnately reticulate. Male spikes narrow, 7-10 cm long, female spikes 4-7 cm, cylindrical pendulous, borne on long, slender peduncle; bracts peltate, orbicular; ovary 0.5-1.0 mm, sessile, 1-celled, 1-ovuled, stigma 3-lobed, papillate, style O; fruit fleshy drupe, 5-6 across, red when ripe; seeds 2-3 mm, ovoid.

Not related to any other known South Indian Species.

*P. barberi* : Holotype 613, Babu and Ravindran.

Type: India, Western Ghats, Kerala, Trivandrum District, Brey Moor forest area, altitude 700 m MSL.

Holotype: NRCS Germplasm conserva-



Fig. 1. A twig of *P. barberi*

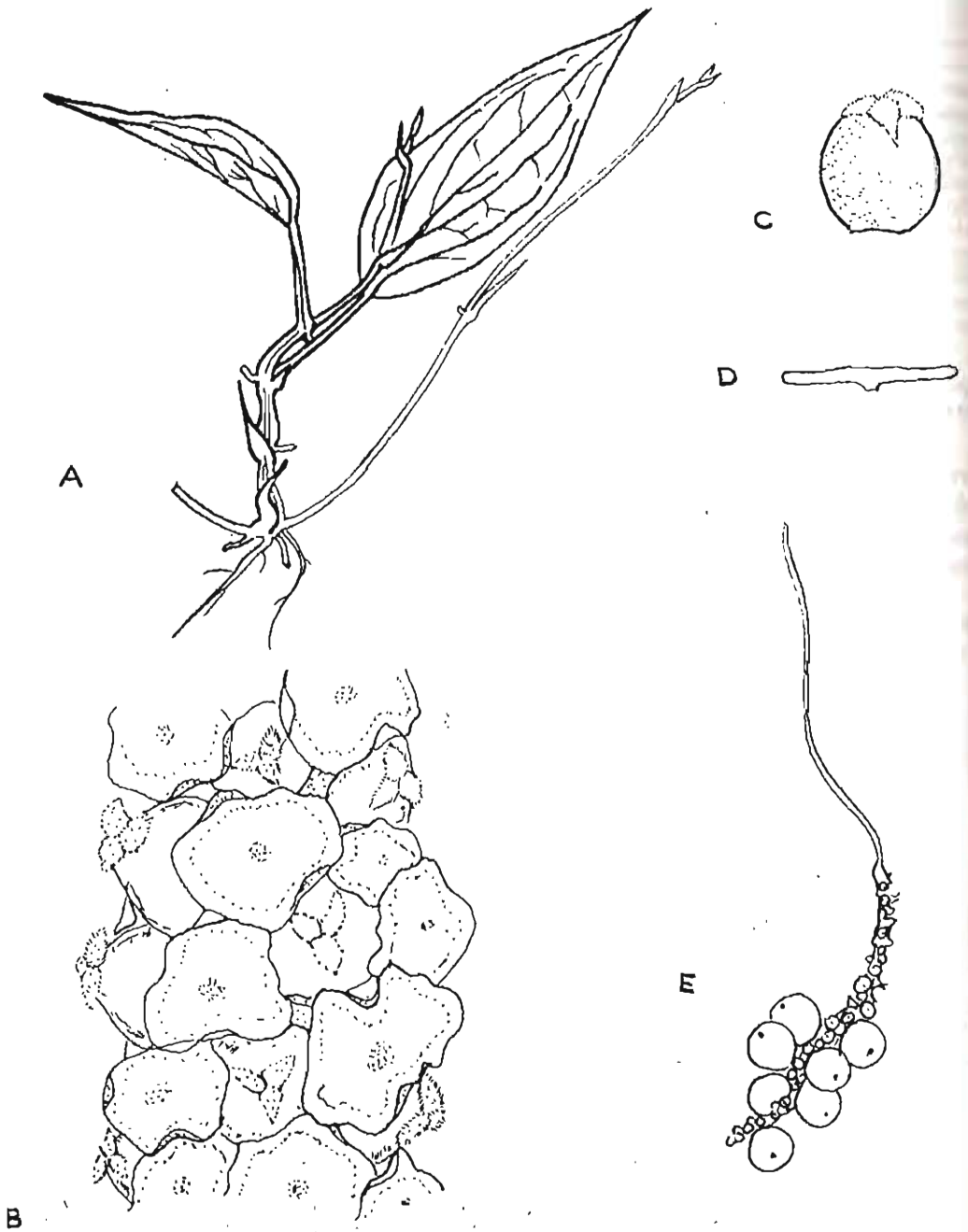


Fig. 2 A. Juvenile branch showing leafless orthotropic shoot. B. Portion of the female spike enlarged, showing the peltate bract. C. Ovary. D. Lateral view of the bract. E. Spike with fruits.

tory, Peruvannamuzhi, Calicut and at NRCS Herbarium, Calicut.

*P. barberi* is a small, slender, glabrous, dioecious climber, climbing on small shrubs and trees. The plant produces three different types of shoots. The juvenile shoots are leafless, slender, having long internodes, producing persistent scale leaf at every node and a few roots. They are green in colour, except at nodes where the colour is pale purple. Orthotropic shoots arise from the juvenile shoot, which climbs up the support trees by means of clinging roots arising at the nodes. These shoots produce small leaves, 5-7 cm long and 2-3 cm broad; lanceolate with 2-3 cm long petioles; base slightly unequal and tip acuminate. From the orthotropic shoot the lateral fruiting branches arise, which bear normal leaves and spikes. The leaves on fruiting branches are 8-12 cm long and 2-

5 cm broad, pinnately reticulate, tip acuminate, base acute, unequal (Fig. 1). There are boat shaped prophylls at each node which are persistent for some time, falls off later.

The lateral plagiotropic shoots produce spikes, which are leaf opposite. Spikes are borne on slender 6-10 cm long, dangling stalks (peduncles). The male spikes are slender, about 7-10 cm long, narrow; male flowers represented by two anthers subtended by an orbicular, peltate bract (Fig. 2). The female spikes 4-7 cm long, pale purplish when young, almost green when mature, female flowers represented by a single ovary, sessile, stigma 3-lobed; papillate, fleshy; fruits usually very few, fleshy drupe, 4-7 mm in dia, round when mature, deep red when fully ripe, seed about 2-3 mm dia, ovoid to round. The seed is slightly pungent.

Table. 1: Karyomorphology of *Piper barberi*

Chromosome number	Long arm $\mu$	Short arm $\mu$	Total length $\mu$	Arm ratio	Chromosome symbol
1	1.11	0.74	1.85	1.50	m
2	1.11	0.55	1.66	2.01	sm
3	1.11	0.55	1.66	2.01	sm
4	1.29	0.37	1.66	3.49	st
5	1.11	0.55	1.66	2.01	sm
6	0.92	0.55	1.47	1.67	m
7	0.92	0.37	1.29	2.49	sm
8	0.74	0.55	1.29	1.35	m
9	0.92	0.37	1.29	2.49	sm
10	0.92	0.37	1.29	2.49	sm
11	0.74	0.55	1.29	1.35	m
12	0.74	0.46	1.20	1.61	m
13	0.74	0.37	1.11	2.00	sm
14	0.74	0.37	1.11	2.00	sm
15	0.65	0.46	1.11	1.41	m
16	0.74	0.37	1.11	2.00	sm
17	0.74	0.37	1.11	2.00	sm
18	0.92	0.18	1.10	5.11	st

19	0.55	0.55	1.10	1.00	m
20	0.55	0.55	1.10	1.00	m
21	0.55	0.37	0.92	1.49	m
22	0.55	0.37	0.92	1.49	m
23	0.74	0.18	0.92	4.11	st
24	0.55	0.37	0.92	1.49	m
25	0.46	0.46	0.92	1.00	m
26	0.46	0.28	0.74	1.64	m

Karyotype = 13 m (metacentric) + 10 sm (submetacentric) + 3 st (sub terminal or acrocentric)

Ratio of largest chromosome/smallest chromosome = 2.5

Classification of chromosome complement (Stebbins 1971) = 2 B

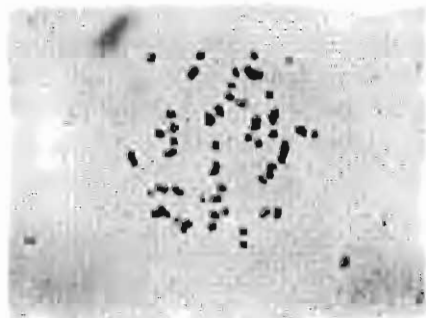


Fig. 3. Mitotic metaphase showing  $2n=52$  (x 1800)

Cytological investigations revealed that *P. barberi* has a somatic chromosome number of  $2n = 52$  (Fig. 3), which is the most predominant number in south Indian *Piper* spp. The karyomorphological studies of root tip squashes revealed that the chromosome complement has 13 metacentric, 10 submetacentric and 3 acrocentric pairs (Table-1). The chromosome length ranged from 0.74 to 1.85 $\mu$ . Based on Stebbins (1971) the karyotype asymmetry could be classified as 2 B.

*P. barberi* is an interesting species among all the South Indian taxa of *Piper*. This species has little resemblance with any other taxa occurring in the region, but

resembles more with some of the Central and Northern South American forms by its reticulately veined leaves, persistent prophylls and long peduncles but at the same time differs from them by its climbing habit and dioecious nature. The climbing forms of New World *Piper* except one species possess erect spikes (Tebbs 1989). In the nature of the long, thin peduncle this species resembles the South American species *P. reptabundum* CDE, but the two differs in leaf characters. These major features make *P. barberi* rather unique among the South Indian *Piper* species. Nothing definitely can be said on the affinities of this species. Probably it is the sole survivor of an ancestral type that reached India from the Central American region before the splitting away of Indian subcontinent from the ancient Gondwana land.

#### Acknowledgment

We profusely thank Rev. Fr. Paul Lenthaparambil S.J., Avila Bhavan, B.M. College P.O., Cochin - 685 021, Kerala, India for the Latin diagnosis.

#### References

- Gamble J S 1925 Flora of the Presidency of Madras, Vol. II (Reprint 1967 BSI, Calcutta).

Ravindran P N, Nair M K and Nair R A  
1987 Two new taxa of *Piper*  
(Piperaceae) from Silent Valley  
Forest, Kerala. J. Eco. Tax. Bot. 10  
: 167-169.

Stebbins G L 1971 Chromosomal Evolution  
in Higher Plants. Edward  
Arnold (Publishers ) Ltd., London.

Subramaniam K and Henry A N 1970  
Rare or little known plants from  
South India. Bull. Bot. Surv. India,  
12 : 1-5.

Tebbs M 1989 The climbing species of  
New World *Piper* (Piperaceae)  
*Wildenowia* 19 ; 175-189.

## Pot Pourri

## Miscellany

### Attention researchers!

All research workers know that there are many miscellaneous findings that never see the light of publication - just because they may not be very significant, interesting or too small an item to be published as a paper or as a research note. They remain on the pages of the Scientists' note books - and often get lost in the course of time.

This information loss is much more than what is generally realised by the scientists themselves.

The editors of 'JOSAC' offer this column to Scientists to publish such miscellaneous information - too small to form a paper or note - but helpful in enriching our knowledge on spices and aromatic crops. By doing this, you will be saving such information and knowledge.

Please send your contributions marked MISCELLANY to the Editor. Limit: 2 pages of typed matter. Photographs are not accepted. Simple drawings or graphs can be incorporated if absolutely essential.

We welcome you to use this column!

EDITOR  
JOSAC