

# Introduction of Research Institutes for Aquatic and Marine Science in Miyagi Prefecture

著者	Kijima Akihiro
journal or publication title	Journal of Integrated Field Science
volume	1
page range	51-52
year	2004-03
URL	<a href="http://hdl.handle.net/10097/30929">http://hdl.handle.net/10097/30929</a>

# Introduction of Research Institutes for Aquatic and Marine Science in Miyagi Prefecture

Akihiro Kijima

Oyster Research Institute/Tohoku University, Japan

In Miyagi Prefecture, there are four research institutes for aquatic field science. These institutes have been advanced basic and applied research for fisheries management system not only by themselves but also with Tohoku University. Here, I introduce these institutes briefly on behalf of them and discuss some future joint programs as alliance of Miyagi regional aquatic field science.

## **1. Miyagi Prefecture Freshwater Fisheries Experimental Station (MPFFES)**

The Station is located in the mountain area of Miyagi Prefecture as shown in photograph(1). The aims of the MPFFES are development of freshwater fisheries and conservation of aquatic environment around rivers, ponds and lakes in Miyagi Prefecture. For example, effective production of salmonid fishes by using aquatic biotechnology, basic and applied study for freshwater fish diseases, and study for conservation of freshwater and brackish water bio-resources.

## **2. Miyagi Prefecture Fisheries Research and Development Center (MPFRDC)**

The Center faces Ishinomaki Bay (northwest part of Sendai Bay) as shown in photograph(2). The aims of the MPFRDC are planning and regulation of fisheries research, promotion of fisheries based on rational resource management system, exploitation of information processing system for fisheries, and development of advanced technology for fisheries in

Miyagi Prefecture. Three research vessels belonging to this institute have been exploited for field survey in coastal and offshore water.

## **3. Fisheries Research Agency Tohoku National Fisheries Research Institute (TNFRI)**

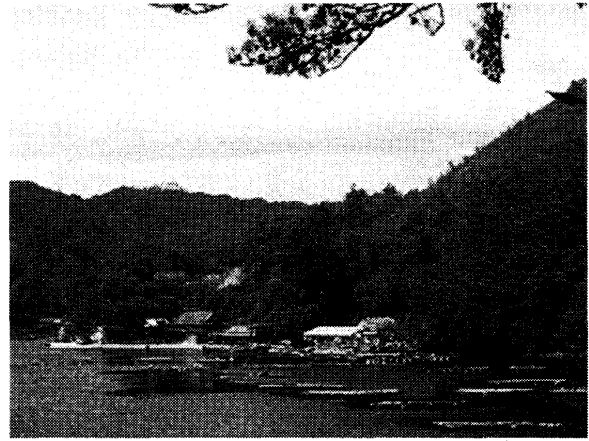
The institute exists in the face of Matsushima Bay (middle part of Sendai Bay) as shown in photograph(3). Areas of responsibility of the TNFRI are the Pacific coastal and offshore areas extending from Nozima Peninsula (Chiba) to Tappi Peninsula (Aomori), called "Mixed Water Region". With the aim of contribution to development of fisheries based on utilizing characteristics of the oceanographic environment, studies on estimation of TAC and stock assessment, comprehensive studies on biological reproductivity, and fundamental research on sea farming and resource management have been carried out.

## **4. Oyster Research Institute (ORI)**

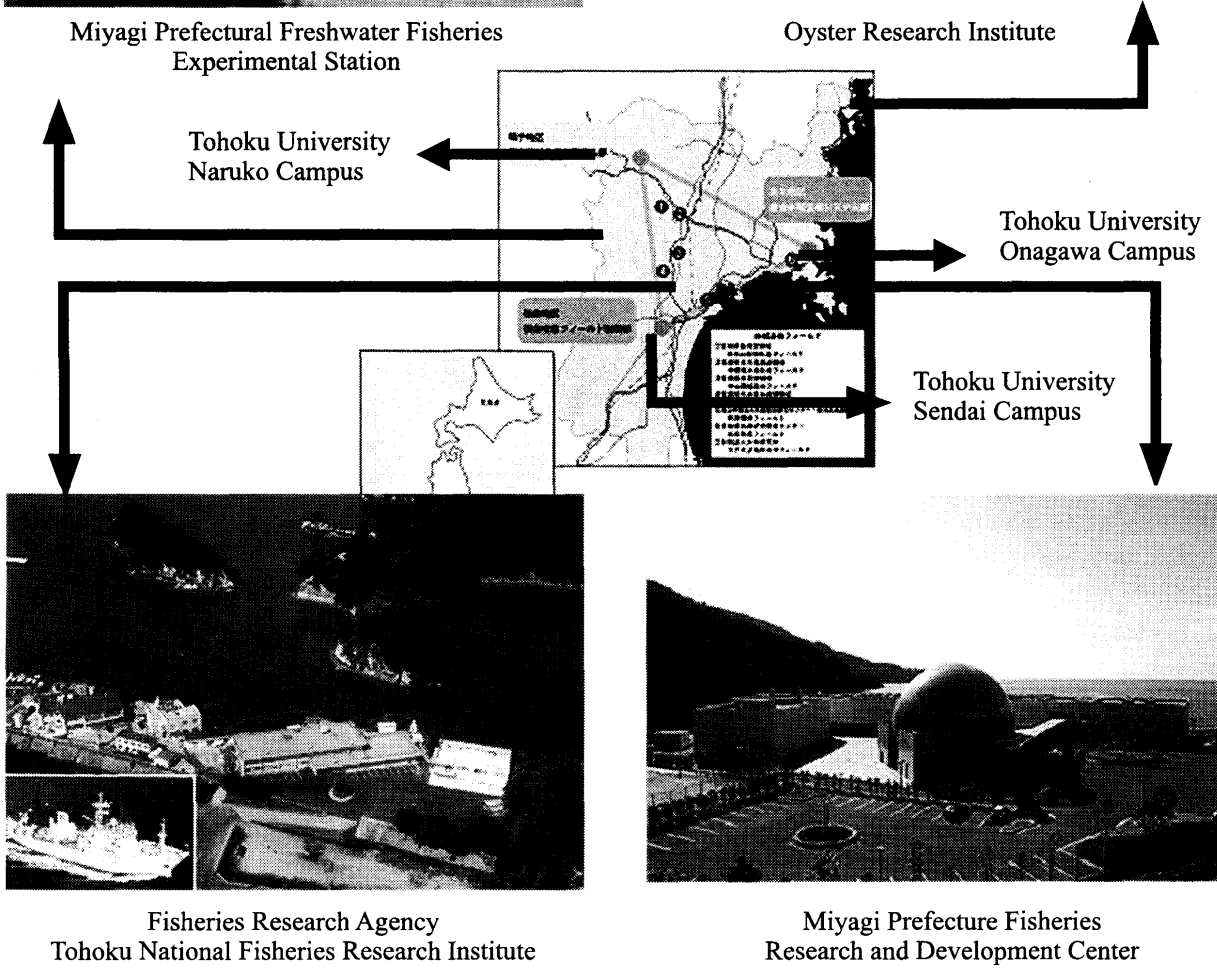
Field Research Laboratory of the Institute faces Moun Bay (north part of Miyagi) as shown in photograph(4). The major aim of the ORI is basic and applied studies on oysters and marine invertebrates by the view point of ecology, physiology and genetics. Also ORI enlighten a scientific fruition of fisheries for civilian including fisherman. Up to now, many studies and many projects have been carried out under tightly cooperative to Tohoku University.



Miyagi Prefectural Freshwater Fisheries  
Experimental Station



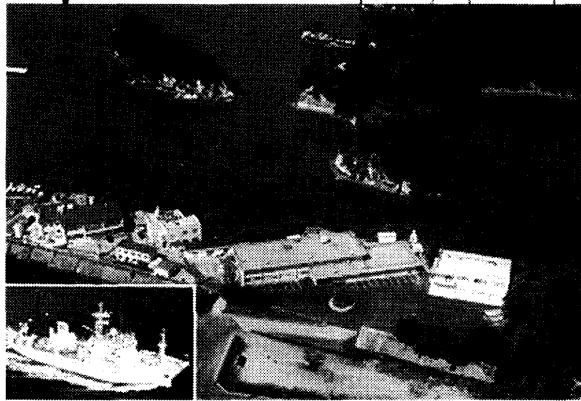
Oyster Research Institute



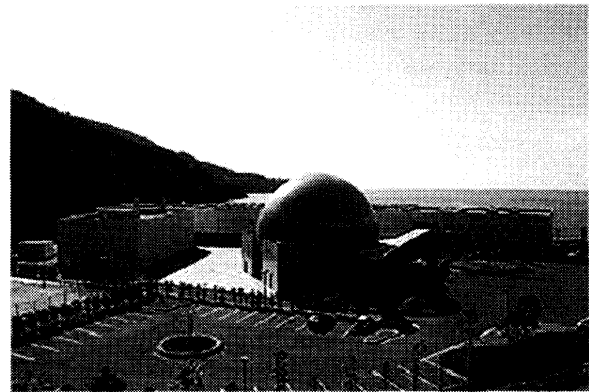
Tohoku University  
Naruko Campus

Tohoku University  
Onagawa Campus

Tohoku University  
Sendai Campus



Fisheries Research Agency  
Tohoku National Fisheries Research Institute



Miyagi Prefecture Fisheries  
Research and Development Center