

9-29-1987

Banner News

Glen Sieroslowski

Andy Nelson

John Murphy

Kriss Philips

Eric Nelson

See next page for additional authors

Follow this and additional works at: http://openspace.dmacc.edu/banner_news

Recommended Citation

Sieroslowski, Glen; Nelson, Andy; Murphy, John; Philips, Kriss; Nelson, Eric; Johnson, Kirk; and Shriver, Justine, "Banner News" (1987). *Banner News*. 370.
http://openspace.dmacc.edu/banner_news/370

This Book is brought to you for free and open access by the Student Work at Open SPACE @ DMACC. It has been accepted for inclusion in Banner News by an authorized administrator of Open SPACE @ DMACC. For more information, please contact rsfunke@dmacc.edu.

Authors

Glen Sieroslowski, Andy Nelson, John Murphy, Kriss Philips, Eric Nelson, Kirk Johnson, and Justine Shriver



The Bear Facts

Volume XVI Issue 1

Des Moines Area Community College, Boone Campus

Sept. 29, 1987

Boone Campus Welcomes You

Des Moines Area Community College and *The Bear Facts* staff extend a hearty welcome to you!

This first issue of *The Bear Facts* should help you become better acquainted with DMACC - Boone Campus.

The Bear Facts is created by members of the Journalism 123 publications/production class. In the coming months, we will strive to keep you informed about what is happening at Boone Campus.

We will offer you features, photos, regular coverage of sports, various club news and much more.

You will also want to keep your eye on our advertisements which will often offer you special discounts.

Reporters are Kirk Johnson, John Murphy, Andy Nelson, Eric Nelson, Tim Rose, Glen Sieroslowski, and Justine Shriver. Jill Burkhart is staff advisor.

The Bear Facts stories are typeset at *The Ogden Reporter*, while layout work is completed at the *Boone News-Republican*.

The Bear Facts will be published monthly and is distributed free of charge to students, staff and friends of the school.

We welcome news stories and ideas. We will also accept signed letters to the editor. Simply place letters, stories or ideas in *The Bear Facts* box in the main office.

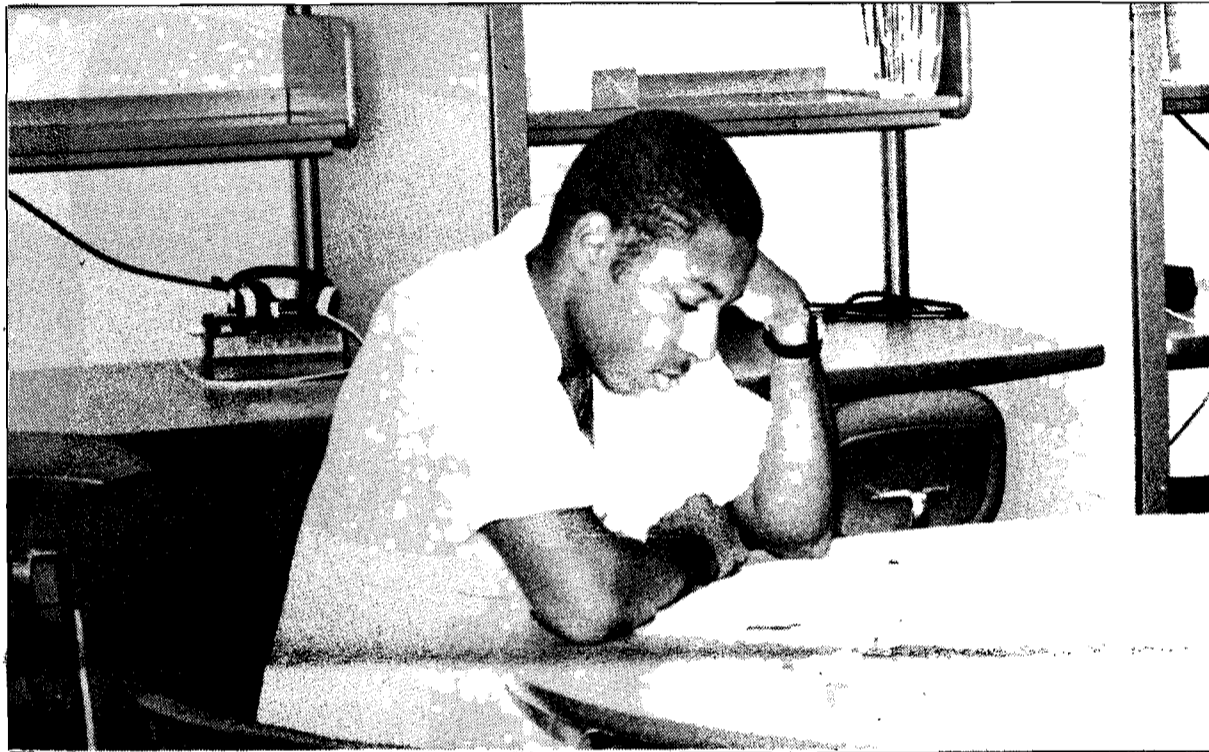
Happy reading!

INSIDE

Rotaract
page 3

Sports
page 7

Remodeling
page 5



Derrick Oglesby of Milwaukee, Wis., is studying in the new Learning Center. Many services are available to all students at The Learning Center. See story for details. -Bear Facts photo

SAB Elections Are Oct. 5-7

by GLEN SIEROSLAWSKI

Nominations for the Boone Campus Student Action Board (SAB) are now being accepted in the main office.

Nominations are to be hand-written and turned in during the week of Sept. 28 to Oct. 2.

Elections will be the following week, Oct. 5-7. A voting booth will be in the main office.

Election winners will be contacted by George Silberhorn Oct. 8, and the first meeting will be set.

Meetings will be held once a month.

The board consists of 10 members. Six are chosen at large, and the others are selected from various clubs recognized by the school including athletics, Nursing Students United, Leisure Studies, PBL and Rotaract.

Each member of the board must maintain a 2.0 cumulative GPA and have a minimum of nine credit hours.

The major areas SAB deals with are schedules, campus recreational activities, special events, and the budget for next year's activity fees.

SAB has a budget of about \$7,000 per semester. Supported by the budget are athletics, The Bear Facts, campus recreation, cheerleading, drama, honor society, intramurals, maintenance of Campus Center, Nursing Students United, PBL, recreation club, Rotaract activities and student government.

Subsidiary boards are formed to aid in decision-making. These boards are programing, campus life and athletics, professional development, and special events.

The programing board plans events such as concerts, parties, and dances.

The campus life and athletics board provides information concerning parking, library services, intramurals and the student newspaper.

The professional development board recommends lecturers and leadership groups, while the special events group plans homecoming and spring fling.

This is your chance to voice your opinions! Vote for the candidate of your choice!

Graduation Applications Due October 27

by JOHN MURPHY

Those students planning on graduating in the spring of 1988 need to turn in their graduation applications by Tuesday, Oct. 27 to the office.

All spring graduates must apply before the midterm (Oct. 27) of the fall semester.

Anyone applying after that date, may be faced with difficulties in receiving a diploma on time.

A student must have a cumulative GPA of 2.0 or higher to be approved for graduation.

Graduation exercises are held at the end of the spring term at Boone Campus. Students completing course work in the fall term are encouraged to participate in the spring commencement exercises.

Commencement will be held May 7, 1988 in the Boone Campus gym.

New Smoking Rules For Boone Campus

Smoking is now permitted only in a special section of the Campus Center at DMACC - Boone Campus, thanks to a new state law going into effect.

The 1987 Iowa Legislature approved a no smoking law in public places, effective July 1, 1987. In turn, the DMACC executive council approved rec-

ommendations to comply with state regulations July 6.

Dean Kriss Philips is asking everyone's cooperation in obeying this new law.

During events held at the Boone Campus gym, the hallway of the gym will also be designated a smoking area, he said.

Join Chorus For Free!

by ANDY NELSON

In an effort to expand the Boone Campus music program, Jim Loos, music instructor, has organized a no fee, non-credit choral ensemble called the Boone Campus Singers.

The Boone Campus Singers meet Tuesday and Thursday from 12:45 - 1:15 p.m. in Room 116 or on the stage.

The music is light, mostly pop and Broadway show tunes, according to Loos.

"Anyone may join. There will be no auditions, but regular attendance is required," Loos said.

Performances will be scheduled in accordance with the group's progress, ability, and time commitment.

Loos hopes to have a high quality group which can occasionally travel to area high schools to promote the Boone Campus in general, and the music program in particular.

Those interested may still join by contacting Loos Tuesdays or Thursdays at 12:35 p.m. in Room 116.

Comments by The Dean

by KRISS PHILIPS

The 1987-88 Boone Campus school year has opened very well!!

I am especially pleased with the cooperation exhibited by all Boone Campus employees and Boone Campus students in adjusting to the temporary confusion caused by our remodeling projects and our record enrollment of over 750 students.

The custodial and office staff are to be specifically commended for the extended hours of work this past month in preparation for the most successful beginning that Boone Campus has experienced in recent years.

I look forward to working with each of you during the 1987-88 school year in helping promote and foster the quality educational program that has been established in the Boone Campus tradition.

Here's How to Run an Ad in The Bear Facts

The Bear Facts staff has come up with another idea to add to the excitement of the Boone Campus paper!

Starting in the next issue of The Bear Facts, students, faculty and staff will be able to run classified ads for books, cars, pets, or almost anything else you want to sell, buy, rent or otherwise advertise. There will be a small fee.

If you are interested, please contact The Bear Facts staff Tuesdays and Thursdays from 12:30 - 1:30 in Room 210. Or, you may leave a message in The Bear Facts mail box in the office.

The success of this new feature will depend on your participation! Give it a shot!

SUPPORT THE BEARS!



Studying in the Sun

Roni Sue Eckroad of Ames, left, and Linda Perkins of Jefferson take advantage of the nice weather during the second week of school to do some studying. Eckroad is a liberal arts major, while Perkins is

in education. The two are seated at a table at the south entrance of the academic building. -Bear Facts photo

A Look at Parking Rules

by ANDY NELSON

DMACC - Boone Campus has hit a record enrollment of around 770 students this year, and along with more students come more cars and the need for closer monitoring of the campus parking lots.

About Your Letters . . .

The Bear Facts will accept signed letters to the editor from students, faculty and staff pertaining to issues of concern to them. Place letters in The Bear Facts box in the main office.

Unsigned letters will be discarded. Please include your name, phone number and major.

Dean Kriss Philips feels the parking situation is working out very well so far, and he compliments the students for their efforts in obeying the traffic regulations.

However, cars parked in the fire zones are still a concern, according to Philips.

Any car parked in a fire zone will be towed away. These fire zones need to remain clear for emergency vehicles, he added.

Tickets are now being issued for other traffic and parking violations. Here is a summary of the Boone Campus traffic regulations to help you avoid getting tickets.

Speed Regulations

The maximum speed limit on all campus drives and roads is 25 mph.

The maximum speed limit in all parking areas is 10 mph.

The charge for speeding is \$10.

Any person who drives a vehicle without due caution and circumspection either (a) at a speed or (b) in a manner as to endanger the safety or property

of persons is guilty of reckless driving.

The charge for reckless driving is \$10.

Parking Regulations

The registered holder of a parking permit, regardless of who drives or parks the vehicle, is responsible for that motor vehicle.

Parking stickers are required for all vehicles driven by daytime students. Stickers will be provided by the business office. Evening and Saturday students are not required to register their vehicles.

Only vehicles with properly displayed college handicapped identification may park in designated handicapped stalls.

The charge for parking in a handicapped stall is \$15.

All vehicles operated and/or parked by faculty, staff, and students on campus must be registered with the business office. The charge for failure to register a vehicle is \$10.

All vehicles are to display the parking permit which is to be

fully attached by its own adhesive backing.

The charge for failure to properly display a permit is \$5.

Only head-in parking is allowed in all parking lots.

The charge for backed-in parking is \$1.

All vehicles must be parked between yellow lines and in appropriate lots designated by the sticker.

The charge for illegal parking is \$5.

Vehicles must come to a complete stop at all stop signs on campus.

The charge for failure to stop is \$10.

All vehicles must remain on traveled roadways, with the charge for driving and/or parking in unauthorized areas set at \$25.

Vehicles parked in any designated fire lane or reserved area are subject to immediate tow, without notice, at owner's expense.

For more information, stop by the business office or call 432-7203.



THE BEAR FACTS is the official student publication of the Boone Campus of the Des Moines Area Community College. The staff welcomes suggestions and contributions, which should be submitted to the editor. The newspaper is published nine times a year and is distributed free to the students, staff and friends of the school.

REPORTERS: Kirk Johnson, John Murphy, Andy Nelson, Eric Nelson, Tim Rose, Glen Sieroslowski, Justine Shriver
PHOTOGRAPHERS: Andy Nelson, Eric Nelson
ADVISOR: Jill Burkhart

BOONE CAMPUS, DMACC
1125 Hancock Drive
Boone, Iowa 50036

COUPON



Buy one PIZZA HUT pizza
at regular price,
and get the next size smaller
with equal number of toppings for

99¢

Not valid with any other offers.



COUPON

News Briefs

Watch for Rotaract

Eager to get activities underway, Lee McNair will be setting up a table for students to obtain information and join the Boone Campus Rotaract Club.

Returning officers and members are planning a meeting to be held in early October.

Rotaract is a service organization which involves doing various volunteer activities for nursing homes and other projects in the area.

If you would like to join or have any questions, contact Lee McNair or Yvonne Farrand.

Students Enjoy Free Lunch

DMACC - Boone Campus students were welcomed on the first day of school with a free feed, consisting of brats, hot dogs, baked beans, chips and pop.

Students, faculty and staff all appreciated the nice welcome, which was planned by George Silberhorn, director of student services.

Hours You Should Know

For your convenience, here are the hours of several areas on campus.

Book Store: Monday - Friday, 8 a.m. to 3 p.m.

The Learning Center: Monday, 9 a.m. to 7 p.m.; Tuesday, 9 a.m. to 3 p.m.; Wednesday, 9 a.m. to 7 p.m.; Thursday, 9 a.m. to 3 p.m. and 6 to 8 p.m.; Friday, 9 a.m. to 3 p.m.

Library: Monday - Thursday, 7:30 a.m. to 8 p.m.; Friday, 7:30 a.m. to 4 p.m.

Main Office: 7:30 a.m. to 5 p.m.

Writing Clinic: Monday, 9 a.m. to 7 p.m.; Tuesday, 9 a.m. to 3 p.m.; Wednesday, 9 a.m. to 7 p.m.; Thursday, 9 a.m. to 3 p.m. and 6 to 8 p.m.; Friday, 9 a.m. to 3 p.m.

Courter Is Re-elected

Lloyd Courter of Boone was re-elected to the Des Moines Area Community College board of directors at the Sept. 8 school board elections.

This is Courter's second term. He will serve for three years.

Board Will Meet Here

The Des Moines Area Community College board of directors will meet at Boone Campus Monday, Oct. 12 at 5 p.m.



Welcome Back!

From left: Gary Stasko, Bill Alley and George Silberhorn take time out from an important conversation to welcome students back to Boone Campus on the first day of school. The three are sitting in the new faculty offices on second floor. -Bear Facts photo

New Teachers At DMACC

by GLEN SIEROSLAWSKI

Not all of the new faces this year belong to the students. The 1987 fall semester sees DMACC's Boone Campus sporting a fresh group of instructors and staff members.

The Bear Facts would like to recognize and welcome them to campus in hopes for a promising year.

The list includes: Karen Berry, nursing, Office 221; Lou Blanchfield, nursing, 136; Mark Brownwell, office education, 136; Les Hamilton, nursing, 221; Susan Joanning, chemistry, 136.

John "Doug" Kirchner, developmental psychology, 136; Nancy Lewis, secretary - nursing, 222; Katherine Lyons, communications, 136; Jane Martino, developmental psychology, 136; Julie Nelson, health science anatomy, 136; Carol Prusa, art, 123.

Ricardo Salvador, Spanish, 136; Margaret Stone, Displaced Homemakers Project Self-Help coordinator, 128; Lee Strain, food service, 130; Jim Tait, maintenance - evening, mechanical room.

Sarah Tanner, developmental center, 106; Cathy Wetzler, nursing, 136; Nancy Woods, physics, 224.

Good luck and much success for this year and for the years to follow.

The Press and The First Amendment

by ERIC NELSON

As many of you know, the 200th anniversary of the U.S. Constitution was celebrated Sept. 17, 1987. But you may not fully understand how important the Constitution is to "we, the people," and the press in particular.

In September of 1787, 38 delegates to the Federal Convention lined up in the Philadelphia State House to sign the new "Constitution for the United States of America."

Since that time, the Constitution has been amended 26 times. Out of those 26 amendments to the Constitution, one of them affects journalists and the media directly - the First Amendment.

The First Amendment clearly states, "Congress shall make no law respecting establishment of religion, or prohibiting the free exercise thereof; or abridging the freedom of speech, or of the press; or the right of people peaceably to assemble, and to petition the government for redress of grievances."

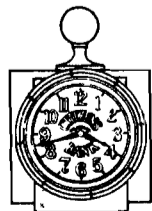


CITIZENS MAKES BOOK LOANS!

College expenses are made up of many different areas, including **BOOKS, RENT, FOOD** and most importantly, **TUITION.**

A student loan through Citizens National Bank can be used for **ALL** of these college needs.

Call today for a **GSL, SLS, or PLUS** loan application at 432-7611 or ask for one of our applications from your financial aid office.



Citizens National Bank

724 Story Street • Boone, Iowa 50036 • 515-432-7611
and Stratford • 515-838-2426

Member FDIC and Hawkeye Bancorporation



Learning Center, Writing Clinic Here to Help

by JOHN MURPHY

Do you need a little help in one of your classes? Do you need tutoring or advice for some of your school work?

The Writing Clinic, Room 103, and The Learning Assistance Center, Room 102, are here to help!

The entire area where these centers are housed was remodeled during the summer to provide you with a roomy and pleasant atmosphere!

Sunny Powers is the director of The Learning Center. She and Jinny Silberhorn, Jeanne Roth, Sally Tanner, Bill Berge, and Mary Walker are all available to help.

Please don't be afraid to stop in and see what they can do for you!

Writing Clinic

The Writing Clinic is staffed by composition instructors. They will help you with a broad spectrum of problems.

People who need help with term papers, resume writing, letters of application, or various other business communications are encouraged to stop in.

The Writing Clinic is located inside The Learning Center.

The Writing Clinic is open Monday, Wednesday, and Friday from 9 a.m. to noon, and Thursday from 9 a.m. to 12:30 p.m. and 1:30 to 3:30 p.m.

The Learning Center and Writing Clinic are available for all students regardless of academic standing, according to Powers.

"They are for anyone who needs extra help in any class. Everything from school funded tutoring to a place set up for make-up tests is available," she said.

The Learning Center

If a student were to need extra help in grammar and/or punctuation, The Learning Center is the place to go. The Learning Center has delivery systems that provide drill and practice for specific grammatical problems as well as many other academic needs.

The Learning Center is open Monday from 9 a.m. to 7 p.m., Tuesday from 9 a.m. to 3 p.m. Wednesday, 9 a.m. to 7 p.m., Thursday, 9 a.m. to 3 p.m. and 6 p.m. to 8 p.m., and Friday from 9 a.m. to 3 p.m.

Services range from a student dropping in for help on a difficult math problem, to one who will spend several days a week working through a computer program designed to help relieve test-taking anxieties, to one seeking a tutor for a specific course.

All such services are free to students enrolled at DMACC and are of nominal cost to those in the community who wish to avail themselves of the programs provided in The Learning Center.

The aim of The Learning Center is to serve the students, so they are invited to make requests and/or suggestions to the staff to see if those services can be enhanced and improved.

Campus View

by ANDY NELSON

QUESTION: What do you think of the remodeling project?



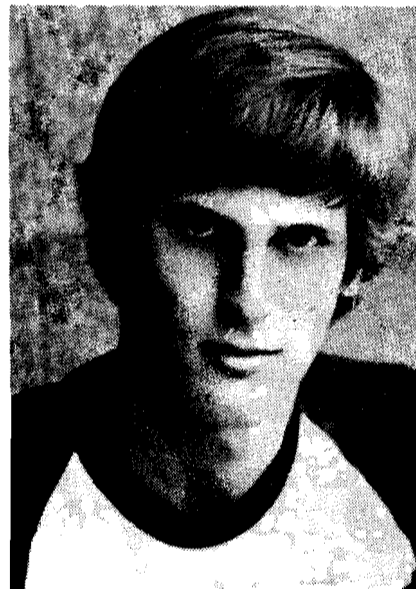
JUSTINE SHRIVER

There is a lot more room for classes. I like the newer look of the campus.



JULIE DUGGAN

It looks nice.



STEVE KAMM

I think it looks pretty nice. It's a lot different from when I was last here.

Stop by the
**BOONE CAMPUS
BOOKSTORE**
for all your school supply needs!
We're more than just books!

**CHOO-CHOO
PUTT-PUTT
MINIATURE GOLF**
18 Holes

1304 S. Story
Boone, Iowa

**Dairy
Queen**

Good food fast!

Allstar
SPORTING GOODS

Tom & Linda Nutt owners

808 Seventh Street
Boone, Iowa 50038

Telephone:
515-432-8393

COUPON

**VAN HEMERT'S
DUTCH OVEN BAKERY**

619 Story Street
Boone, Iowa

Traditional Dutch Recipes — Baked Fresh Daily

**Stop in for a FREE donut and coffee
with this coupon.**

Open Monday thru Saturday, 5:30 a.m. to 6 p.m., Thursday until 9 p.m.

COUPON

Fisher's Shoe Store has famous
name brands for you!

ROCKPORT
L.A. Gear
S.A.S.
Florsheim

Adidas
Keds
Bass
People Movers
Hush Puppies

Dexter
SBICCA
Cobbles
Sebago
Trotters

CLARK'S
BANDOLINOS

FISHER'S Shoe Store
BOONE

SPORTS

HEADQUARTERS

Girls Look For a Good Season

by GLEN SIEROSLAWSKI
The 1987-88 women's basketball season looks to be a good one for head coach Dick Criner. "We're better in every department. We're quicker, faster and taller, and we have quite a bit more height," he said.
Height should make a difference in this season's campaign. The Lady Bears lineup has 11 of the 14 players at 5' 7" and taller. Three are 6' tall.
Two of the three six footers are Lisa Mescher, Carrol and Gail Smith, Ogden. Both are returning starters. Completing the list of returning sophomores are Natalie Bertini, Madrid and Terri Bappi, Ames.
Criner said, "Some of the freshman also have a lot of potential."

Freshman players are Marilyn Cason, North Tech.; DeAnn Clark, Prairie City; Tawni Cox, Ankeny; Nicole Engelby, Cedar Rapids and Joan Grote, Wall Lake.

Julie Grote, Wall Lake; Beth Mesecher, South Hamilton; Shari Mosman, Boone; Rhonda Pendleton, Louisville, Kentucky and Susan Roth, Wall Lake.

"Ellsworth is the team to beat. They have the most returnees," Criner said.

"A good test for us will be in the home opener against Marshalltown and then Mason City. Mason City will be tough because it's our first road trip," Criner said.

He added, "If we play as a team, it should be an interesting season."

Practice for the women begins October 5.

Hughes Optimistic About Season

by GLEN SIEROSLAWSKI
Basketball season is right around the corner and if enthusiasm can be translated into points, it should be a promising season for the Boone Campus men's basketball team, according to Larry Hughes, coach.

"I'm really anxious for this season to get underway. We're not going to be national champions, but we are going to be an improved club," Hughes said.

This looks to be a rebuilding year for Hughes after a disappointing season last year.

The rebuilding of the Bears will focus around returnees Tim Kloewer of Harlan, Steve Jorgenson of Manilla, and Tom Kennedy, Jefferson.

"We're not too big this year," he said, "but if we can get the younger players and the older players to play as a team, we should be all right," Hughes said.

Take Part in Campus Rec

by GLEN SIEROSLAWSKI
The DMACC - Boone Campus campus recreation program is back for its second year due to the success it had last year.

Campus rec was started last year by Larry Hughes, p.e. instructor, to give students and faculty an alternative to the same old, daily routine. It offers the use of campus facilities for a variety of activities including badminton, flag football, golf, jakari, soccer, tennis, volleyball and weight lifting.

"Everyone can use the facilities. You don't have to be a varsity athlete to participate," he said.

Hughes added he would like the program run on a "walk-in basis."

Students and faculty may check out equipment from Hughes' office in the p.e. building as needed.

For some sports, participants should see him a day in advance if the activity requires preparation.

"Volleyball, for example, takes time to set up so the students should let me know in advance of the time they plan to use the equipment," he said.

One appealing aspect of this program is that you may play whomever and whenever you want!

Hughes is also adding some flavor to the program this fall by starting tournament play in badminton, tennis and volleyball.

The campus rec program is free of charge and open Monday through Friday during class hours.

Rounding out the rest of the team will be freshmen Jesse Broome, Lincoln High School of Ann Arbor, Mich.; Jim Heese, Harlan; Chet Love, Fort Dodge; John Spinner, Dowling High

School of West Des Moines; Kevin Taylor, Des Moines Hoover; and Scott Winters, Des Moines East.

Outdoor conditioning began Sept. 28 and will run until of-

icial practices start Oct. 12.

Those who would like to try out are encouraged to talk to Coach Hughes in the gym office of the p.e. building as soon as possible.

DMACC - Boone Campus 1987 - 1988 Basketball Schedule (Men and Women)

Date	Opponent	Team	Site	Time
Nov. 13 (F)	Clinton Tournament	Men	Clinton	TBA
Nov. 14 (S)	Clinton Tournament	Men	Clinton	TBA
Nov. 16 (M)	Marshalltown	Women	Home	6:00
	Marshalltown	Men	Home	8:00
Nov. 18 (W)	Mason City	Women	Away	6:00
	Mason City	Men	Away	8:00
Nov. 21 (S)	Simpson JV	Women	Away	6:00
	Simpson JV	Men	Away	8:00
Nov. 23 (M)	Iowa Central	Women	Home	6:00
	Iowa Central	Men	Home	8:00
Dec. 2 (W)	Kirkwood	Women	Home	6:00
	Kirkwood	Men	Home	8:00
Dec. 5 (S)	Ellsworth	Women	Home	6:00
	Ellsworth	Men	Home	8:00
Dec. 9 (W)	Iowa Central	Women	Away	6:00
	Iowa Central	Men	Away	8:00
Dec. 12 (S)	Marshalltown	Women	Away	6:00
	Marshalltown	Men	Away	8:00
Jan. 14 (R)	William Penn JV	Women	Away	6:00
	William Penn JV	Men	Away	8:00
Jan. 16 (S)	Iowa Lakes	Women	Home	6:00
	Iowa Lakes	Men	Home	8:00
Jan. 18 (M)	Faith Baptist College	Women	Ankeny	5:30
	Council Bluffs	Men	Away	7:30
Jan. 20 (W)	Reames	Women	Home	6:00
	Clarinda	Men	Home	8:00
Jan. 23 (S)	Waldorf	Women	Away	6:30
	Waldorf	Men	Away	8:30
Jan. 25 (M)	Indian Hills	Women	Away	8:00
	Indian Hills	Men	Away	6:00
Jan. 27 (W)	Simpson JV	Women	Home	6:00
	Simpson JV	Men	Home	8:00
Jan. 30 (S)	Creston	Women	Away	6:00
	Creston	Men	Away	8:00
Feb. 3 (W)	Mason City	Women	Home	6:00
	Mason City	Men	Home	8:00
Feb. 6 (S)	Iowa Lakes	Women	Away	6:00
	Iowa Lakes	Men	Away	8:00
Feb. 8 (M)	William Penn JV	Women	Home	6:00
	William Penn JV	Men	Home	8:00
Feb. 10 (W)	Creston	Women	Home	6:00
	Creston	Men	Home	8:00
Feb. 13 (S)	Kirkwood	Women	Away	6:00
	Kirkwood	Men	Away	8:00
Feb. 15 (M)	Indian Hills	Women	Home	6:00
	Indian Hills	Men	Home	8:00
Feb. 17 (W)	Clarinda	Men	Away	7:30
Feb. 20 (S)	Waldorf	Women	Home	6:00
	Waldorf	Men	Home	8:00
Feb. 22 (M)	Reames	Women	Home	6:00
	Council Bluffs	Men	Home	8:00
Feb. 24 (W)	Ellsworth	Women	Away	6:00
	Ellsworth	Men	Away	8:00
Mar. 3 (R), 4 (F), 5 (S)	Women's Regional Tournament		TBA	TBA
Mar. 4 (F), 5 (S), 6 (Su)	Men's Regional Tournament		Burlington	TBA



SUPPORT THE BEARS!

New Center On Campus

Are you a single parent attending classes at DMACC-Boone Campus?

Or, would you consider yourself a displaced homemaker going back to school (divorced, separated, or your spouse is disabled or deceased)?

Are you, perhaps, a homemaker who worked primarily at home and who now has decided to develop or tune up some job skills?

If you answered yes to one of those questions, stop by Room 128 and talk with Maggie Stone about Project Self-Support.

The Displaced Homemakers Center began here July 1. Geared to assist persons in determining career options, the Center is available to help individuals attain their career goals.

"Some people come in knowing what they want, others need direction and career counseling," states Stone, Center coordinator.

"I'm here to help people explore options and to offer some support when needed," she said.

"I'm hearing a number of adult students say they'd like some means of getting to know other adult students on campus, to compare feelings about returning to school after a number of years, to talk about how to juggle home and school, or to just simply discuss adult student survival!

"If you would like to participate and share in an informal group such as this, please

contact me in Room 128," Stone said.

Boone Campus Dean Kriss Philips commented, "I think this segment of our population certainly has a need for counseling whether their need be additional schooling, financial help, or career identification help. I feel this group has been far too long neglected in receiving help."

Project Self-Support also offers financial assistance toward child care and transportation expenses to eligible students enrolled in vocational/technical programs at DMACC.

If you consider yourself a displaced homemaker and think you might qualify, stop by Monday through Thursday for details.

Project Self-Support, the Displaced Homemakers Center, is here to serve you.



Gary Stasko looks pleased with his new area in the faculty offices on second floor. -Bear Facts photo

Enrollment Up 11.4%

DMACC-Boone Campus has set a record enrollment of 771 students for fall semester, according to Dean Kriss Philips.

Philips said officials released enrollment numbers at Ankeny last week.

This fall's 771 students represents an 11.4% increase, or 79 more students than in the fall of 1986.

Writing Contest Underway

Works may be submitted for the annual DMACC writing contest beginning Monday, Oct. 7, according to Rick Chapman, communications/humanities, Ankeny Campus.

Papers will be accepted through Monday, Dec. 7, 1987.

Any DMACC students enrolled this fall may participate.

Awards

The awards include a tuition scholarship of \$250 for fall term, 1988, by the Ankeny Campus Student Action Board (the contest's chief sponsor).

Cash awards include \$100 for best story and \$50 for runner-up.

"We feel that all students, those returning, as well as those graduating or transferring, will feel welcome to enter their work," Chapman said.

Publication

Award-winning manuscripts and those receiving honorable mention may be published in *Expressions*.

Judging

Judges from DMACC will evaluate the manuscripts and award the prizes. They and the coordinator reserve the right to determine if prizes will be awarded.

Entries will be judged anonymously, for each contestant's work will be number-coded during the evaluation process.

Keep copies of your work. Entries will not be returned.

Manuscript Standards

For manuscript standards and other rules, you may see Sunny Powers in The Learning Center.

Read about the Constitution

The 200th anniversary of the U.S. Constitution is upon us!

To celebrate the event, the Boone Campus library has recently purchased what *Library Journal* cites as being the "outstanding reference source of '87." It's a four-volume series entitled, *Encyclopedia of the American Constitution*.

Students Gear Up For Club Events

by ERIC NELSON

Nursing Students United (NSU) is an organization for DMACC - Boone Campus first and second year associate degree nursing (ADN) students.

During the summer, NSU student volunteers checked blood pressures at Pufferbilly Days and held a car wash.

Some future events being discussed for Nursing Students United are a raffle, bake sale, and a mime show that will be performed by nursing student

Brian Weigel.

Heading NSU is Audrey Wheeler, president; Maude Neff, vice president; Tammy Moeller, secretary; and Patty Cox and Brenda Hoshaw, faculty advisors.

The majority of the nursing student body will attend a professional organizational convention for the Advancement of Associate Degree Nursing (IOAADN) Oct. 8 and 9 in Des Moines.

Barbers Who Care!

FULL FAMILY HAIR CARE

APPOINTMENTS & WALK-INS WELCOME

FOUR BARBER STYLISTS:

Richard Sibert
Dick Harris

Julie Herrstrom
Mandy Peterson

Boone Hair Care Center

722 . Keeler

432-3610

Hy-Vee

**Lots of Little Differences
— You'll Like!**

931 8th Street • Boone
432-6065

**Hawkeye
Federal
Savings Bank**

Complete
BANKING SERVICES
DRIVE-UP FACILITIES
24-HOUR AUTOMATIC
TELLER MACHINE

MAIN BANK HOURS:

Monday - Friday 9:00 a.m. - 4:30 p.m.
Thursday 9:00 a.m. - 6:00 p.m.

"WE BELIEVE IN BOONE COUNTY"

8th and Arden / Boone

432-1220

Member FSLIC



Whirlpool

RCA

MAYTAG

MODERN APPLIANCE & TV, INC.

QUALITY SALES AND SERVICE

HAROLD "HARRY" BLOOMQUIST
LENNIE BLOOMQUIST

802-8TH STREET
BOONE, IOWA 50036
515/432-1060

Extensive Remodeling Completed

by KIRK JOHNSON

Last April Boone Campus started an extensive remodeling project in the main academic building. Now, nearly six months and \$410,000 later, workmen are putting the finishing touches on the project.

With increases in enrollment during the past few years, there was a need for more classrooms and offices, according to officials.

Grabau Construction of Boone began construction last spring in the auditorium. The auditorium was decreased in size and capacity to add four new classrooms. A projection booth and a storage area over the new classrooms were added.

A new Learning Center was added on the first level, which was formerly a classroom, offices and the darkroom. Located next to the Book Store, The Learning Center contains two offices, a small classroom, a testing room, and a VCR and computer corner. Also housed in The Learning Center are new desks and study areas.

Other various first floor remodeling includes men's and women's dressing rooms and the expansion and remodeling of The Campus Book Store.

The former Learning Center area is now being used as part-time teachers' offices.

Remodeling on the second floor involved tearing out all but one of the rooms to add two new classrooms and a new faculty office. All classrooms were then remodeled and fitted with new white boards that replaced the old blackboards.

Also added to the second floor was the new business and computer section. New three-way variable lighting to cut glare, typing modules with adjustable typing stands, and storage were added to the business area.

The Bear Facts also now has a room on the second floor, complete with a new darkroom in the back.

Life, Leisure And All That Jazz!

As of presstime, 12 - 15 leisure studies majors were preparing to depart for New Orleans to attend the NRPA Congress for recreation and parks, according to Bill Alley, recreation instructor.

The congress, held Sept. 17-21, promised to be a good one featuring education sessions in health, marketing, outdoor adventure programs and a host of others.

The evening social activities also appeared quite inviting as Bourbon Street and Market Square headed up the list.

Due to the remodeling, many teachers were moved to new offices. Here's a list of all the teachers and their offices:

Room 105: Virginia Silberhorn, Jeanne Roth.

Room 106: Dolores Powers, Sarah Tanner.

Room 111: Kay Mueller, Brenda Hoshaw.

Room 122: Bill Alley, Bruce Kelly.

Room 123: Lee McNair, art instructor.

Room 124: Robert Taylor, Dave Palmer.

Room 125: Beatrice Clupper, Bill Berge.

Room 126: John Smith, Bob Person.

Room 127: Harold Johnson, Bill Ryan.

Room 128: Margaret Stone, Nancy Warehime.

Room 129: Connie Booth, Patti Cox.

Room 132: Jayne Smith, Cynthia Watson, Louise Payton.

Room 136: Day and evening part-time instructors.

Room 201: Gary Stasko, Mel Holthus, Linda Plueger, Ken Walter.

Room 210: Jill Burkhart.

Room 212: Vivian Brandmeyer.

Room 213: Mary Jane Green.
Room 215: Rosie Irvine, teacher aide.

Room 221: Sandra Chacko, Cindy Cory, Nancy Handley.

Room 222: Joan von Grabow, DMACC district director of nursing.

Room 224: John Doran, Curt Hill, Nancy Woods.

Gym: Larry Hughes, Dick Criner.



Before and After...

Here are some before and after shots of the area south of the auditorium which was remodeled during the summer. Four new classrooms were added, while the capacity of the auditorium was decreased. -Photo by Andy Nelson





JAYNE SMITH

Smith Finds Boone Campus Rewarding

by KIRK JOHNSON

DMACC - Boone Campus is small and friendly, but also a rewarding place to work, says Jayne Smith, this month's teacher feature.

As the Boone Campus head librarian, she says the campus is just the right size.

"I like the size because it's small enough to get to know people, and yet large enough that my work in the library remains a challenge," she said.

Besides being a librarian, Smith teaches Composition II and library instruction.

Before coming to the Boone

Campus in 1985, Smith taught English and speech at Northeast Hamilton High School and St. Mary's High School in Storm Lake.

She received her BA from the University of Northern Iowa and her MA from the University of South Dakota.

Originally from Carroll, Iowa, Jayne now lives in Ogden with her husband Randy, who is a math teacher at Ogden High School, and her two daughters, Lindsay, three, and Chelsea, one.

We wish Jayne continued success at Boone Campus!

Welcome to the Campus Library

Welcome to Boone Campus from the library staff!

Stop in and read the daily newspapers we subscribe to, including *The Des Moines Register*, *The Daily Tribune*, *Boone News-Republican*, *USA Today*, and the *Wall Street Journal*. You may also want to check the northwest corner of the library for the current issues of magazines we receive.

For your use, free of charge, are three IBM typewriters, an IBM personal computer and an Apple IIe computer.

We are here to help you make this year your best. Take advantage of the study carrels and the tables for quiet group study. And, of course, we are receiving new books every week.

Library hours are Monday through Thursday, 7:30 a.m. to 8 p.m. and Friday from 7:30 a.m. to 4 p.m. The library is closed weekends.

We'll be looking for you!
-The library staff, Louise, Jayne and Dona.

Attention Freelancers!

by JUSTINE SHRIVER

Robell Publications is seeking freelance writers in this area to write non-fiction for a new publication expected to be launched in January, 1988.

Pay will range from \$40 to \$120 per article, and authors will receive wide attention, with state coverage.

Added pay is available for photos and camera-ready copy.

Publication will be bimonthly to start, and then monthly in approximately six months.

If you are interested, write to Robell Publications, 511 N. Grandview, Papillion, NE 69046.

Please tell about yourself including educational level, type of employment, hobbies, years as a writer, etc. All correspondence is kept confidential.

DMACC

SUPPORT THE BEARS!

American Collegiate Poets Anthology

International Publications

is sponsoring a

National College Poetry Contest

— Fall Concours 1987 —

open to all college and university students desiring to have their poetry anthologized. CASH PRIZES will go to the top five poems:

\$100 First Place	\$50 Second Place	\$25 Third Place	\$15 Fourth \$10 Fifth
----------------------	----------------------	---------------------	---------------------------

AWARDS of free printing for ALL accepted manuscripts in our popular, handsomely bound and copyrighted anthology, AMERICAN COLLEGIATE POETS.

Deadline: October 31

CONTEST RULES AND RESTRICTIONS:

1. Any student is eligible to submit his or her verse.
2. All entries must be original and unpublished.
3. All entries must be typed, double-spaced, on one side of the page only. Each poem must be on a separate sheet and must bear, in the upper left-hand corner, the NAME and ADDRESS of the student as well as the COLLEGE attended. Put name and address on envelope also!
4. There are no restrictions on form or theme. Length of poems up to fourteen lines. Each poem must have a separate title. (Avoid "Untitled"! Small black and white illustrations welcome.)
5. The judges' decision will be final. No info by phone!
6. Entrants should keep a copy of all entries as they cannot be returned. Prize winners and all authors awarded free publication will be notified ten days after deadline. I.P. will retain first publication rights for accepted poems. Foreign language poems welcome.
7. There is an initial one dollar registration fee for the first entry and a fee of one dollar for each additional poem. It is requested to submit no more than ten poems per entrant.
8. All entries must be postmarked not later than the above deadline and fees be paid, cash, check or money order, to:

INTERNATIONAL PUBLICATIONS


P. O. Box 44044-L

Los Angeles, CA 90044

EXECUTIVE

Decisions

The latest in
FALL FASHIONS
is arriving daily!



Maybee's

813 Story Street
Boone Iowa 50036

