

5-22-1981

Banner News

Marcia Matt

Lynn Norley

Harry Andrews

Carl Heincker

Jeff Johnson

See next page for additional authors

Follow this and additional works at: http://openspace.dmacc.edu/banner_news

Recommended Citation

Matt, Marcia; Norley, Lynn; Andrews, Harry; Heincker, Carl; Johnson, Jeff; Stanley, Greg; Sauer, Tim; and Schroeder, Tom, "Banner News" (1981). *Banner News*. 353.
http://openspace.dmacc.edu/banner_news/353

This Book is brought to you for free and open access by the Student Work at Open SPACE @ DMACC. It has been accepted for inclusion in Banner News by an authorized administrator of Open SPACE @ DMACC. For more information, please contact rsfunke@dmacc.edu.

Authors

Marcia Matt, Lynn Norley, Harry Andrews, Carl Heincker, Jeff Johnson, Greg Stanley, Tim Sauer, and Tom Schroeder

THE BEAR FACTS



Volume VIII

May 22, 1981

Issue VIII



WARM SPRING DAYS bring Boone Campus students outdoors to do much of their studying. The Bear Facts covergirls, above, were caught combining studying and listening to the Riverboat

Five Jazz Band during the annual Phi Beta Lambda Career Workshop. Left is Cindy Lewis and right is Lutrica Wirth, both students at Boone Campus.

Honoring Old Blue pg. 2

DMACC board results pg. 4

Looking at sports pg. 6, 7, 8

Travels remembered pg. 10

Final exam schedule pg. 12



VIRJAMA HAMILTON

Retirement tea

A retirement tea will be held in honor of Virjama Hamilton on Wednesday, May 27 from 3 to 5 p.m. in the Boone Campus Lounge.

Mrs. Hamilton is retiring from the faculty of the Des Moines Community College where she has been in the English Department.

Everyone is invited to attend the event.

The Bear Facts

The BEAR FACTS is the official publication of the Boone Campus, DMACC and all of the material presented is the work of journalism students. Any comments or suggestions concerning the operation of the paper would be welcome.

EDITOR: MARCIA MATT
ADVERTISING: LYNN NORLEY and CARL HEINCKER
SPORTS: JEFF JOHNSON, JOE NEVILLE and KELLY HAMMAR
PHOTOGRAPHY: TIM SAUER
REPORTERS: DOROTHEA FITZGERALD, KATHY WEBER and HARRY ANDREWS
ADVISOR: ROSEMARY WESTPHALEN

Boone Campus, Des Moines Area Community College
1125 Hancock Drive
Boone, Iowa 50036

Old Blue has a large fan club

By two 'Faculty Fans' of Old Blue

A few years ago members of the Recreation Club thought it would be a good idea to have a club school bus which could be used for educational trips, club projects, student senate activities and any other college related activities requiring transportation.

With a little ingenuity, paint, a few bucks and a lot of "elbow grease" there appeared on the scene what is now known by most people in the college and in the community as "Old Blue".

"Old Blue" is a 48 passenger school bus that has been remodeled into a camper, specifically designed and constructed by students and staff to serve as transportation for up to 22 people. It will also accommodate nine for overnight camping. Bill Alley, the chairman of the Recreational Leadership Program and Advisor of the Recreation Club, says that Old Blue's history is unique.

Old Blue has made many educational trips to all parts of Iowa and Minnesota. It has taken the Recreation Club and Student Senate on many ventures such as to Apple River in Wisconsin, skiing in Minnesota and camping throughout the state of Iowa. In addition, it has been used to transport cheerleaders and fans to many out-of-town athletic events.

A number of people who have made trips on Old

Blue were contacted and asked, "What is the first thing that comes to your mind when you hear the words Old Blue? and the answers were varied. A few follow.

Bill Sullivan: A 1980 Recreation graduate and current Recreation major at the University of Northern Iowa has "great memories".

Dewey Brown: A local pharmacist and current manager of Williams Drug store in Boone said, "That ol' wreck? Beer, ball games and OUCH! my head."

Tom Pietz: Owner of Oshkosh Tanning Company in Boone exclaimed, "280 degrees oversteer and a lot of noise and fun!"

A.J. TERRONES: Executive Vice President of the Boone Chamber of Commerce feels that it "could improve its restroom facilities!"

John Smith: College Business Instructor and Baseball Coach said "That ol' dog?"

Mel Holthus: Bookkeeping Instructor at Boone Campus said he remembers "basketball games, icy roads, and I'm sorry I wasn't there when it was passed in the Monfort Lane."

Marilyn McGinty: A 1980 Recreation graduate and currently a Recreation major at Mankato State University in Minnesota says that she "likes the new gearshift."



OLD BLUE IS A FAVORITE (and the only) bus owned by the Boone Campus. The bus has transported students to and from many activities. Among these was the February ski trip which

involved 18 campus students. Pictured above is "Old Blue" with Gail Peitzmeier during that ski trip.

Boone open house a success

By MARCIA MATT

Demonstrations, tours, athletic events, entertainment and free food helped to create the atmosphere for the Boone Campus open house on May 3.

The event began at 1 p.m. with baseball and softball clinics for interested T-Shirt Little League ballplayers. Members of the Boone Bears and Lady Bears ball teams conducted the clinics led by coaches John Smith and Larry Hughes.

Campus instructors and administrators were on hand throughout the afternoon to discuss financial aid, student housing with prospective students and their parents. Campus tours were also offered to all of those interested.

Various testing centers were plentiful around the campus with blood pressure, C.P.R. and G.E.D.

checks done by the campus nursing students.

Displays and exhibits dealing with other campus programs could also be found in the areas of art, anthropology, science and computers.

Entertainment in the student lounge was ongoing throughout the afternoon. The Boone Campus drama department presented an excerpt from William Shakespeare's comedy "A Midsummer Night's Dream" at 2 and 5 p.m. The Top Hats from the Trinity Lutheran Church whistled and sang for those in attendance at 4 p.m. and the band "Sweet Tooth" provided dancing music from 5 to 7 p.m.

Beginning at 5 p.m. the group of campus visitors began lining up for the final activity of the day — free hot dogs grilled and served by some of the Boone Area Chamber of Commerce Ambassadors.

Remembering the 1980-1981 year

By MARCIA MATT

As the 1980-1981 season closes, there are many memories of the past year which stand out in our minds. Some of these are included in the below list of the "year in review."

Oct. 13: Rotary Club Steak Fry serves 862 people raising \$1,375 in scholarship money.

Oct. 17: Kevin Israel attempts to solve the mysterious murders of his neighbors in the Fall production of "Bull in a China Shop."

Oct. 29: Ghosts and goblins are plentiful at the Halloween party held at Cheryl Hurst's home.

Dec. 8: DMACC students celebrate Christmas with a dance at the "Outer Limits."

Dec. 19: Ethel and Albert spring onto the scene with the creation of the "Players in the Lounge."

Jan. 16: Bear Facts publishes the first alumni edition.

Jan. 23: Legislative Convocation causes uproar about the possible closing of Boone Campus.

Feb. 2: Lady Bears win Homecoming match-up as Kerin Springer and Tim Orr are crowned the 1981 King and Queen.

March 16: Students from 12 foreign countries participate in the second annual Rotary Club International Foreign Food Fair.

April 10: Audiences meet Grandma Letty and "More Than Meets the Eye" in the Campus Spring Production.

April 28: Las Vegas comes to Boone Campus with a night of gambling.

May 1: Tim Scott and Mary Storey are voted as the students with the "best butts."

May 3: The DMACC Open House attracts many visitors to the campus.

May 11: John Biggs performs for Boone students in the lounge.

May 13: Springfield Country entertains at the second annual campus pig roast.



THE STUDENT LOUNGE at Boone Campus has a new look thanks to the work and imagination of a group of students majoring in Recreational Leadership. The members of the campus Recreation Club wanted to do something that would add to the campus and to the enjoyment of the students who spend leisure time in the lounge. They decided that a new decorating job would be in order. The students first projected a picture on the wall, then painted the colorful scene

which is shown in the adjoining picture. The original idea for the drawing came from Crystal Spicher, and it took three days for the club members to recreate the scene on the wall. Above from left are the students who participated: Paul O'Hare, Perry; Karen Von Bon, Dedham; Bob VerStraeten, Des Moines, Lynn Foltz, Mt. Ayr; Jean Golightly, VanMeter; Crystal Spicher, Kalona; Dave Phelps, Bayard; and Paul Torbert, Lincoln, Nebraska.

Recreation

By LYNN NORLEY

The recreation club devoted this month to a number of activities. The first project was to paint the mural which now adorns the wall of the student lounge.

On Saturday, April 11, club members took wash buckets and sponges in hand for a car wash which grossed approximately \$30. Though they didn't make as much as was originally anticipated, they still considered the day a success.

April 28 sported "Las Vegas Night." For \$1 a person received \$100 of game money. Games of chance were set up in the Boone Legion Cabin. We all had our choice of Black Jack, Roulette, Mouse Racing, High Chicago and five-card-draw.

Following the gambling, an auction was held for those who still had enough money to bid. Prizes included a Coor's Beer sign which sold for \$101,000; a frisbee for \$14,000; and a small pizza from Godfathers for \$18,000.

The Best Butt contest was the next activity. Preliminary voting was held in the lounge on April 28 and 29. Students chose three females and three males whose buttocks they most appreciated.

Following the preliminary contest, five finalists of each sex were named. These included Joe Neville, Scott Webb, Tim Scott, Tim Orr and John Minyard, as well as Shelly Williams, Mary Storey, Kerin Springer, Lisa Overturf and Christie Spicher.

Pictures were taken of each finalist's "best side" and were displayed in the lounge. Voting took place with the placement of money by the picture each student most admired.

Winners for the event were Tim Scott and Mary Storey.

All proceeds will be used to sponsor a trip to National Recreation and Park Association in Minneapolis, Minnesota on Oct. 26-29 of the next season.

**Godfather's
Pizza**



A PIZZA You Can't Refuse

Watch for
Specials

1512 S. Marshall

432-5573

William's
Walgreen
Drugs

The Place For:
School Supplies
Health Supplies
and
Gifts

Board actions of the year

By HARRY ANDREWS

During the 1980-1981 school year, the DMACC board of directors took action on two major items along with routine business according to Boone Campus Dean, Byron Hamilton.

On March 9, the board approved the 1981-1982 budget resulting in the reduction or termination of 11 positions at Boone.

On April 2, the board accepted the resignation of superintendent Paul Lowery. A search committee was also appointed to find a new superintendent for the upcoming school year.

In addition, the board unanimously voted to support the newly organized DMACC Alumni Association according to Eldon Leonard, president of the Board of Directors.

The terminations and reductions at Boone

Campus, reduced the budget by \$599,128. Cuts were in the areas of instruction, student life, business management and physical plant.

Paul Lowery's resignation was submitted following his term since 1966.

DMACC serves all or a part of 11 counties in Iowa with campuses in Ankeny, Des Moines, Carroll and Boone and a number of extension centers.

Lowery has emphasized that DMACC is a student centered institution staffed by professionals dedicated to educational service.

The DMACC Alumni Association has published its first newsletter "Alumni World."

Alumni specialist, Mary Lousdale, terms the purpose of the organization as being "to keep you (the alumni) informed of the latest happenings at the college and keep you in touch.



DURING THE MARCH meetings of the DMACC board of directors many Boone Campus faculty members risked the loss of their positions. The above photo recalls the scene of one of those meetings held on the Ankeny Campus. Many Boone faculty and staff members can be found in the picture.

The growth of the Bear Facts

The philosophy of this paper is to mirror campus life as it is from month to month. In the "glass darkly" away in the background can be seen the work of the staff in the format.

The members of the Bear Facts staff for 1980-81 have enjoyed their assignments.

The procedures in putting the paper together have changed during the year.

In the first edition of this year, the copy was set on an IBM typewriter. The first venture into typesetting was done with the help of Arvid Stock and the Boone High School typesetting equipment, and later the type was set on the CompuEdit machines at the Boone News-Republican newspaper by Bear Facts staff members.

Special thanks to Mr. Stock who would come back to the High School on "Trouble Runs" when problems arose with the use of the equipment. As

the setting was done after the hours that the high school used the equipment, this added extra time to his day.

By the March issue the work was moved to the Boone News-Republican facility where the type was set. From the first issue to this, the last of this school year, several years of printing technology were covered.

Thanks go to the pressmen at the Boone News-Republican, Larry Lada and Fred Dorse for all their time spent in shooting the pictures and running the paper off on the press.

The staff invites any students who are interested in participating in the production of the Bear Facts for next year to sign up soon. There are lots of areas for participation, from reporting, writing, shooting pictures and designing the pages. Whatever your talent, it will be welcome.



The Editor's Desk

By MARCIA MATT

Well, this one wraps up the year! It has been quite exciting for me as the Bear Facts editor. We've tried to provide Boone Campus students with objective reporting concerning the many DMACC events and occurrences. I've been very proud of every issue. Since this is our wrap-up issue, I started looking through the back editions of the year and found that each issue seemed to build on the succeeding ones and learn from its mistakes.

We saluted a number of campus students with our "Student of the Month" series this year. Among those were Kevin Israel, Chris Shedd, Shelly Kirk, Gail Peitzmeier and Florence Nimmo.

We also spotlighted many faculty members and a number of DMACC special events. Remember the Fall Play with Izzie as that "loveable" (?) detective and his spring play role of the "sweet Grandma Letty" or Cindy Pio as the "ghoulish" Mrs. Dracula at the October Halloween Party? Kerin and Tim were great as the 1981 homecoming royalty and the DMACC board was nerve racking with its budget cuts.

Those events were thrilling to report about as were all of the Boone activities. Hopefully, next year will be filled with just as many memorable events.

Special thank-yous to all of the Bear Facts staff of the entire year, Boone Campus faculty, the Boone News-Republican, Louise Beyea, Dick Kelly, Jay Burg and Rosemary Westphalen.

Congrats and good luck to all of the graduates. (And personal congratulations to Julie Kay, Annette, Jennifer and Kerin).

I hope that everyone has a terrific summer. See ya next year.




SOUND ADVICE

Hi-Fidelity Sales

805 STORY STREET

432-3606



Pizza Hut

INFLATION FIGHTER NIGHT

Celebrate "Hump" Day

with 1975 Prices

Wednesday Night

Have it Your Way

1608 S. Story at 432-5000 Until 10

Confusion and comedy describe the year in drama

By LYNN NORLEY

Another year has officially concluded for the DMACC drama department, but they are still in gear.

At the Boone Campus Open House on May 3, a play within a play was presented by the male members of the group. It was an excerpt from William Shakespeare's "A Midsummer's Night Dream."

Cast members included Ron Bunting as Snug and the Lion; Kevin Israel as Bottom and Pyramus; Kirk Kopenhaver as Snout and Wall; David Phelps as Quince and the narrator; Tony Thornburg as Flute and Thisby; and Paul Torbert as Starveling and Moon.

A synopsis of the rest of the year included the following highlights: The fall play was entitled "Bull in a China Shop." Cast members were Jodi McElwee, Kevin Israel, Beth Christianson, Sandy Johnson, Lynn Norley, Chris Shedd, Tim Orr, Ron Bunting, Tony Thornburg, Brian Baker, Kerin Springer, Paul Torbert and Jean Golightly. The play dealt with six old spinsters who were so infatuated with a young homicide detective that they began committing murder to attract his attention.

Throughout the year, Kevin Israel directed a series of student productions which were called "Players in the Lounge." Many of these productions dealt with the plights of couple Ethel and Albert. Cast members included Karen Folkman, Kevin Elsberry, Jodi McElwee, Tony Thornburg, Mark Adkins, Kerin Springer and Lynn Green.

During the winter quarter, a melodrama — "The Farmers Daughter" was presented both at the school and at the Foxy Lady Lounge in Ames. Cast

members for that production included Jennifer Lett, Karen Folkman, Kevin Israel, Jodee McElwee, Tony Thornburg and Kirk Kopenhaver.

The annual spring production was "More Than Meets the Eye" and concerned a young writer who was striving to create the great American novel without being discovered as being the same author of various children's stories under the pen name of Grandma Letty.

Cast members were Kevin Israel, Marcia Matt, Ron Bunting, Peg McCarty, Jodee McElwee, Beth

Christianson, Kirk Kopenhaver, Tony Thornburg, Gay Bullock, Dave Phelps, Paul Torbert and Cindy Lewis.

Throughout the year, the group also attended various other productions. Among these were "A Midsummer Night's Dream"; "Death of a Salesman"; "Die Fledermaus"; "Solid Gold Cadillac"; and "A Street Car Named Desire."

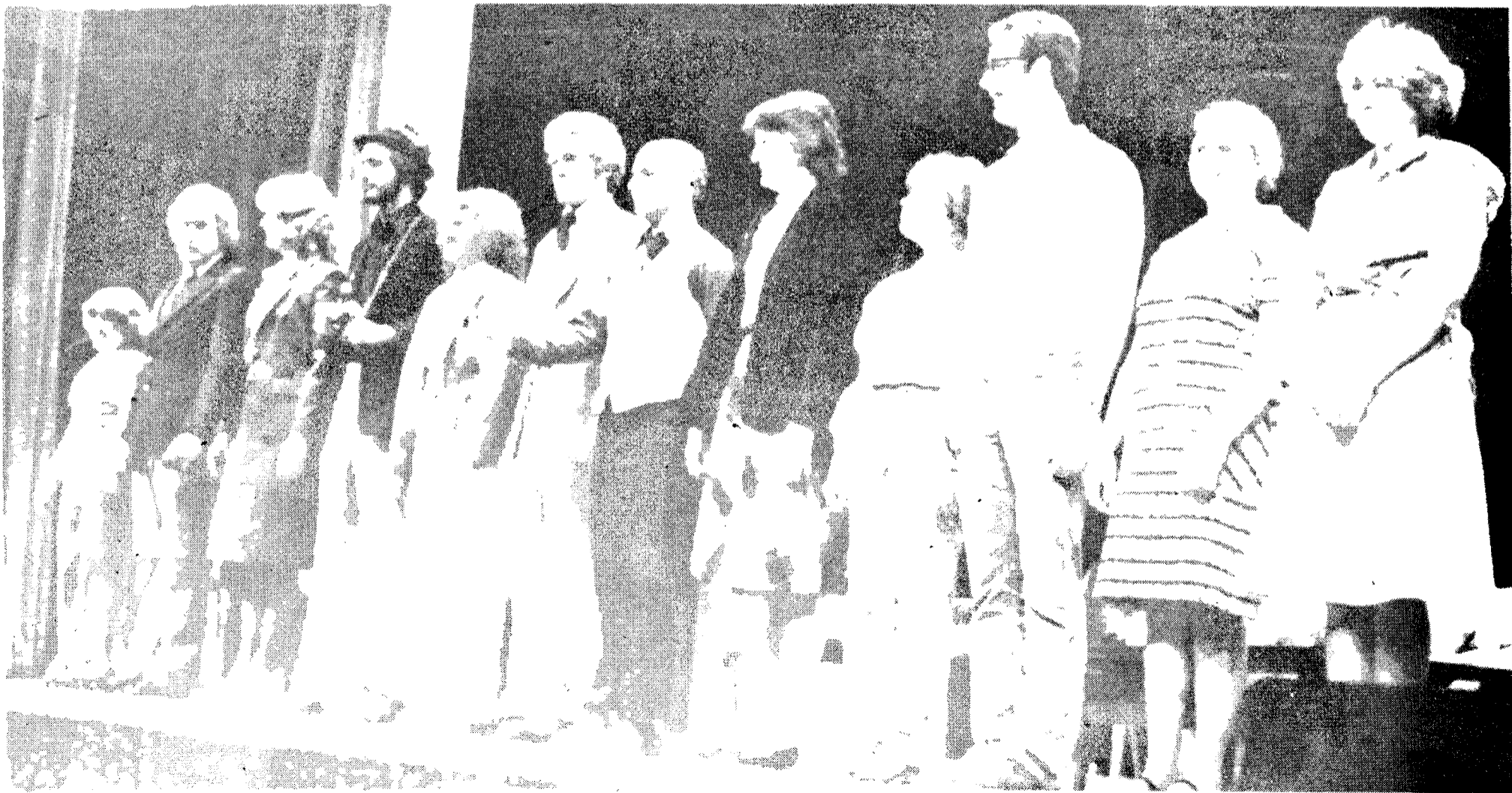
All Boone Campus Drama Productions are supervised by advisor Chuck Schaeffer.



THE FALL PLAY was "A Bull IN A China Shop" and featured many campus students. It dealt with a murder mystery and the role of six old spinsters in the dealings.



LYNN GREEN entertained campus audiences with his role as the "janitor" in all of the Players in the Lounge productions. A series of Ethel and Albert skits were presented as was the melodramas "The Farmers Daughter" and Shakespeare's "Midsummer Nights Dream."



Curtain call for the spring play

Two students recall baseball

By CARL HEINCKER

The Boone Bear baseball season finished up last weekend at Forest City with the Bears elimination from district tournament play. The Bears closed the season with a 28-13 record and a team average of .319.

The Bears were led at the plate this year by John Querio and his average of .413.

The team also sported a balanced hitting attack with only five members below a .300. Jayden Davidson, Roger Hummer and Craig Howard rounded out the attack with 84 RBI's between them.

Off the mound, the Bears were led by scrappy reliever Paul Wilmet. Hard throwing John Minyard was tough to stop leading the team in BB's with 37; strikeouts with 44; and wild pitches with eight. Tim Sage and Bruce Miller compiled the rest of the bullpen. They were both undefeated.

Greg Stanley and John Minyard both recorded no-hitters this year. Sophomores Mickie Schmith

By JEFF JOHNSON

The Boone Bears have completed another successful baseball season.

Boone finished with a record of 30 wins and 15 losses. The Bears won their first three games of the season and then won thirteen straight and stayed consistent until the latter part of the schedule.

Waldorf eliminated Boone in the regional tournament at Waldorf. Both games were decided by one run. The Bears were not beaten badly all year, yet they overran a number of competing teams by the ten run rule.

Most of the starters had 300 plus batting averages. Pitching performances were generally good. The biggest difficulty for the pitching staff were walks and hit batsmen. All-in-all, the team was successful and kept up the winning tradition.

and Rick Rockwell pitched in hard luck all season; and Jeff Johnson caught all hitters off balance this year. Kevin Kilstofte discovered a torn muscle in his shoulder and missed almost the entire season.



THE CHEERLEADERS were a major part of the spirit at Boone Campus. They are shown here during one of the many Bear basketball games. Pictured from left are Sherry Roper, Sue Sternquist, Kerin Springer, Gail Peitzmeier, June Barkwill, Shaela Young and Barb Sage.



1981



RELAXING IN THE DUGOUT are several of the Boone Campus Men's baseball team. The Bears



home field for the season was Memorial Park and the team was coached by John Smith.

OSCO DRUG

For A Variety of

Needs Including

Prescription Drugs

North of Campus on Story

804 STORY

432-1304



Private Stock Winery

926 Eighth Street

432-8348



men's baseball team

Basketball

By HARRY ANDREWS

What can be said about this years basketball season? There were disappointments, but there were also many high points according to coach Larry Hughes.

Hughes said that the Bears won their own tournament, played many close ballgames and that the bench showed real desire. The players worked hard and were strong on conference recognition.

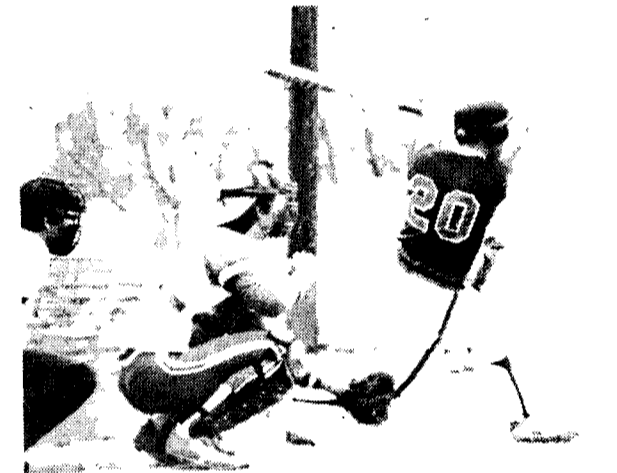
Things started off great according to Hughes. In the first two games of the season, the Bears won their own Boone Classic Tournament composed of the four towns of Esterville, Centerville, Marshalltown and Boone.

After this great start, misfortune struck. Ricky Galbraith, the Bear's star sophomore was lost from team due to scholastic problems. This left a near total freshman team.

Though the Bears never regained their winning form, Hughes said, they played a lot of close games. Hughes said that the real highlight was the attitude and desire displayed by the bench. Though these freshmen were not starters, their willingness and determination was very important to the team effort, he said.

For essentially a freshman team, concluded Hughes, the Bears played good basketball and he hopes for further progress in the future.

Bear players included: Brett Stumbo, Mike Garner, Marc Frette, Dan Coder, Richard Griggs, Todd Peterson, Harold Mayo, Fred West and Dave Dunkelberger.



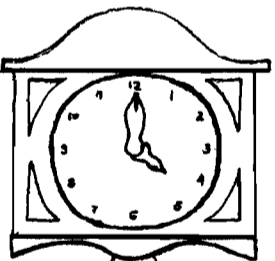
THIS BEAR is shown in the above two photos as the ball is released and is then struck.



"HOW ABOUT A CHEW," Bob Larson asks during a Bear match-up. Larson was one of the 1981 Boone Bears baseball team.



THE 1980-1981 BOONE BEAR BASKETBALL TEAM



Tuesdays
4-6
Wednesday
&
LUNCHEON SPECIALS DAILY

TIC TOC

Supper Club

716 Keeler
432 - 5979

Lady Bears record: 18 to 11 for season



NOW COME ON YOU GUYS...lets get the picture taken. The Lady Bears enjoyed quite a remarkable season this year and had a great deal of fun to boot. Above they are pictured "messing around" instead of posing for a team picture.



The Bear Facts salutes the

Lady Bears



Honor to Kelly!

KELLY HAMMAR was voted one of the most outstanding young pitchers in the nation as the Boone Lady Bears enjoyed one of their most outstanding records ever.



"MASCOT" is not the name of this dog, but the Lady Bears called his theirs when he tried to join the team. These team members enjoy playing with the dog prior to departing for another game.



THE 1981 BOONE CAMPUS LADY BEAR TEAM

Out of one

By GREG STANLEY

Coming out of high school, freshman college students want to get involved in activities at college as they have been this year at the Boone Campus.

For example, on the first day of school there was a noon cookout for all of the DMACC students. Hotdogs and hamburgers were provided by the Boone Chamber of Commerce.

In October, the Drama Department presented "Bull In A China Shop" involving Kerin Springer, Lynn Norley, Jodi McElwee, Sandi Johnson, Tim Orr, Brian Jones, Tony Thornburg, Christine Shedd, Kevin Israel, Ron Bunting, Beth Christianson and Jean Golightly.

Boone began it's fall baseball practice with about 40 players coached by John Smith. The group kept busy with scrimages against Iowa State, Grandview, Simpson and Ellsworth.

During December, plenty of activities occurred. The biggest was the opening of the men and women's hoop play. The Bears opened with the four-team Bear Classic and won! The consistent good play of Dave Dunkelberger and Fred West kept the Bears in the game until the end.

The Lady Bears enjoyed their best season ever with the scoring and rebounding of Jane Boesen and Mary Storey and the coaching of Linda Johnson.

January was a month of controversy between students and DMACC Administration. A raise in tuition for the spring quarter was announced on Friday, Jan. 23 and questions and tempers were raised by the news.

The crowning of Kerin Springer and Tim Orr as royalty highlighted the Homecoming festivities at DMACC on Feb. 2. The day of activities included a noon pep rally, pom pom routines and a drill team performance.

From Feb. 19-23, a group of students enjoyed a ski tip to Afton Alps in Minnesota and in March choir members travelled to Kansas City for a vacation.

April brought us the spring play "More Than Meets the Eye" with cast and crew members including Peggy McCarty, Lynn Norley, Beth Christianson, Marcia Matt, Kevin Israel, Kirk Koppenhaver, Dave Phelps, Jodi McElwee, Gay Bullock, Ron Bunting, Tony Thornburg, Paul Torbert and Cindy Lewis.

The pig roast in May was the year's final highlight.



1980-1981 Student Senate

Campus Choir closes another one

By MARCIA MATT

Tuesday night rehearsals and a trip to Kansas City sum up the 1980-1981 season for the Boone Campus Choir.

Performances were not plentiful during the year, but moral was always high. The group opened the year with a performance in conjunction with the Rotary Club's annual Steak Fry. The entire group vocalized on several numbers and solos were also performed by various group members.

In December, there was the Boone State Bank Christmas party at which a portion of the ensemble entertained.

And, of course, there was the March trip to Kansas City! Theater productions, sight-seeing and parties abounded and the group returned with high spirits and tired bodies.

The DMACC choir also said good-bye to its' director of eleven years when Jan Betten moved to Texas at the beginning of May. Farewell celebrations were held both at the Trestle and at Cheryl Schroeder's home.

All-Star Sports

For Your Individualized Jacket



STOP by
808 7th

Or Call 432-8393



With Specials every week

The price is right for anyone with an appetite

1609 S. Story

432-8988



1980-1981 Drill team

Cheering and drills at DMACC

By MARCIA MATT

Throughout the year, campus spirit was high and the chief spirit raisers were the Bear cheerleaders and drill team squads.

Bake sales, chili feeds and various other special events were also the result of hard work devoted by these gals.

the cheerleaders kept moral high during all of the home Bear and Lady Bear basketball match-ups and the drill team often added to the excitement with their routines.

Both groups really polished up for the homecoming festivities in February and created

routines to "Shake Your Groove Thing" and "It's Just a Fantasy."

Boone Bear Drill team members included Tammy Rogers, Maria Johnson, Tammy Pries, Jane Wolf, Julie Annan and Sheryl Schwison.

Cheerleaders were Sue Sternquist, Gail Peitzmeier, Kerin Springer, June Barkwill, Barb Sage, Shaela Young and Sherry Roper.

Both groups were advised by Jinny Silberhorn.

Calendar for summer

June 3—Summer quarter classes begin at Boone Campus

June 9—Last day to add a class

June 30—Mid-Term for Arts and Sciences

July 10—Mid-Term for Career Education

July 3—No Classes. Offices closed for holiday

July 16—Last day to drop a class in Arts and Sciences

August 5—Last day to drop a class in Career Education

July 28—Summer Quarter ends for Arts and Sciences

August 19—Summer Quarter ends for Career Education

Boone 'tripped'

By TIM SAUER

This year, Boone Campus students marked the year with two special trips. The first was a ski trip in mid February and the other was the choir trip in early March.

The ski trip began on Feb. 19. Members of the group were Mark Adkins, Steve Anderson, Dale Carhill, Brad Fitzpatrick, Chris Folvag, Annette Gibbs, Kim Lough, Ed Mathers, Tim Orr, Dave Phelps, Dave Powers, Gail Peitzmeier, Tim Sage, Barb Sage, Joel Sage, Paul Torbert, Scott Webb and Shaela Young.

They left for Afton Alps, Minnesota on a Thursday afternoon and following a five and one half hour drive (due to many "rest" stops) they arrived at the Ramada Inn.

On Friday morning the group left for the slopes at 10 a.m. and found it at 11:30 (it must have been hiding). They spent the remainder of the day skiing. That night sported a wine and cheese party back at the hotel.

It rained on Saturday, so they were unable to do anymore skiing. Therefore, many group members enjoyed the sights of St. Paul.

Sunday morning, after "working" late into the night, they began the trip home.

On March 12, a group of DMACC choir members and faculty left for a weekend in Kansas City, Missouri. Included on the guest list were Mr. and Mrs. Clair Abbott, Mark Adkins, Jan Betten, Bill Carlson, Debbie Carlson, Chris Carney, Sholene Durbin, Carol Grimm, Marcia Matt, Tim Orr, Tammy Rogers, Mr. and Mrs. Dick Schroeder and Kerin Springer.

They arrived in Kansas City Thursday afternoon and registered at the Crown Center Hotel. Shortly thereafter, they left again to attend a dinner theater production of "Death Trap."

On Friday, the group enjoyed the sights of the city and went shopping at the Country Club Plaza. That night some members attended another play while others attended a basketball game. Later, came the long awaited highpoint of the trip — a toga party! The hotel's bedsheets supplied the togas and entertainment was provided by party members.

The next day, after sleeping late, some of the group went shopping at the Crown Center Shopping Center while others attended a seminar held in the hotel.

That evening the group returned to Boone ready for another Monday of classes.

Junior Fashions

Stop in
for all of your

Fashions of
the '80s

813 Story

432-1340

PAMIDA

Discount Center

Conveniently Located for a
Variety of Students Needs

South Marshall

The Best
For Less

432-8755



THE THORN TREE

The thorn tree.

By TOM SCHROEDER

Today I decided to take a walk in the timber. It's the end of January and there should be snow waist high. Old Man Winter should be blowing those arctic winds down across the land. But this day was like Indian summer. The sun was shining down upon the land, making everything as golden as harvest time. The sky was as blue as the ocean and the clouds like the surf rolling up on the sandy beach.

As I walked down the path, I came upon a big thorn tree standing tall and proud in the middle of the path. He was like the keeper of the path, and no one could go near him. His limbs, reaching upwards into the sky, were sharp and prickly like very sharp daggers, warning intruders.

But there, in the middle of this mighty protector, was a small bird house, the dwelling of a small feathered creature too small to defend itself from this mighty tree. Then I noticed there was no one at home in the little house and the tree was actually lonely. The birds had gone to a warmer climate for the winter, and the mighty thorn tree stopped me just to say hello.

Then I realized that this majestic tree meant no harm to anyone, that his imposing structure was his beauty. But it hid his gentleness.

As I turned to walk away, I could hear the tree sigh; but I, knowing better, realized it was only the winds. For a moment I thought I heard the mighty tree say, "Thank you, my friend, for stopping by." And I continued my journey down the path, deeper into the timber.

Fall offerings

Dean, Byron Hamilton has announced that over 100 course sections will be offered at the campus this fall quarter to meet the needs of new and returning students. The expected enrollment has brought about the need to expand offerings in Arts & Sciences, Career Education and Business and Industrial Supplemental Programs. These courses in addition to the already existing Office Education, Nursing, Bookkeeping-Accounting and Recreation Leadership Programs will be offered in both the day and evening programs.

A student may choose from twenty-six different major areas of study including three in Office Education, two in nursing and twenty-one in college transfer areas.

PBL winners

Members of the Omicron Zeta Chapter (DMACC — Boone) of Phi Beta Lambda sent 14 delegates to the 35th Annual State Leadership Conference which was held on the Campus of the University of Northern Iowa on April 24 and 25.

Members of the local chapter joined over 300 business students from throughout Iowa in competition for the honor to represent the state at the National Leadership Conference in Chicago, Illinois on July 5-8.

Members who represented the Boone Chapter included: Kevin Klute, Ames; Karla Walker, Boone; Andrea Fleshman, Ames; LaDonna Osborn, Boone; Annette Gibbs, Boone; Tim Wilhelm, Boone; Pat Namanny, Carroll; Jean Voss, Ames; Kevin Israel, Ames; Ron Bunting, Ames; June Barkwill, Boone; Ellen Jacobsen, Madrid; Beth Christianson, Ames; and Sherry Roper, Jefferson.

The following students placed in the respective events:

- Extemporaneous Speaking — Kevin Israel, fourth place.
- Accounting I — Annette Gibbs, first place.
- Business Machines — June Barkwill, third place.
- Business Machines — Ellen Jacobsen, second place.
- Executive Typist — Pat Namanny, fifth place.
- Executive Typist — Karla Walker, first place.
- Data Processing I — Andrea Fleshman, first place.
- Payroll Accounting — Annette Gibbs, first place.
- Poster Event — June Barkwill and Beth Christianson, fifth place.
- Junior Typist — Jean Voss, fourth place.
- Junior Secretary — LaDonna Osborn, fourth place.
- Salesmanship — Beth Christianson, fourth place.
- Ms. Future Business Executive — Sherry Roper, Honorable Mention.

- Mr. Future Business Executive — Kevin Klute, fifth place.
- Who's Who in PBL — Sherry Roper and Beth Christianson.
- Largest Local Chapter Membership — DMACC Boone Campus, second place.
- Local Chapter Annual Report — DMACC Boone Campus, fourth place.
- Lloyd V. Douglas Chapter of the Year — DMACC Boone Campus, fourth place.

In addition, our nominee to the Businessperson of the year (Dr. Wayne E. Rouse) was recognized and given a plaque at the awards banquet.

Members who placed first place in their events are planning on traveling to Chicago with the rest of the Iowa winners to compete nationally in July.



BETH CHRISTIANSON was one of many Boone Campus business students who worked at the recent high school student business contest.

Spring enrollment

Spring enrollment at the Boone Campus stands at 500 students. These figures include 77 nursing students, 21 Bookkeeping-Accounting students, 31 Office Education (Administrative Secretary, Business Office Supervisor, Correspondence Secretary), 28 Recreation Leadership Specialist students, and 340 students in Para-Professional and Arts and Science Programs.

There are 302 female students and 198 male students. Enrollment figures include all full time students in Arts and Sciences and Vocational Technical Programs. These figures do not include persons enrolled for non-credit adult education courses or high school completion courses.

Summer Quarter classes will begin on June 3 and the 1981 Fall quarter will open on September 14.

Virginia's
Flowers

Any occasion
calls for flowers

Flowers ...
Something
Special

702 KEELER STREET

432-5325

Chan's
Chinese
Restaurant

日
現
之
果
地

1217 S. Story

Final exams

Following is a schedule for the final examinations for Spring Quarter.

Tuesday, May 26: Monday - Wednesday - Friday classes (or more, including Monday - Tuesday - Thursday - Friday classes) that begin at the following class times will have the following exam schedule:

8 a.m. classes at 8 to 9:50 a.m.
10 a.m. classes at 10 to 11:50 a.m.
12, 12:10 and 12:40 classes at 12 to 1:50 p.m.
2 and 2:10 p.m. classes at 2 to 3:50 p.m.

Wednesday, May 27: Monday - Wednesday - Friday classes (or more, including Monday - Tuesday - Thursday - Friday classes) that begin at the following class times will have the following exam schedule:

7 a.m. classes at 7 to 8:50 a.m.
9 and 9:30 a.m. classes at 9 to 10:50 a.m.
11 a.m. classes at 11 to 12:50 p.m.
1 and 1:10 p.m. classes at 1 to 2:50 p.m.

Thursday, May 28: Tuesday - Thursday classes that begin at the following times will have the following exam schedule:

8 and 9 a.m. classes at 8 to 9:50 a.m.
9:30 and 10 a.m. classes at 10 to 11:50 a.m.
11 a.m. classes at 12 to 1:50 p.m.
12:10, 12:30 and 1:20 classes at 2 to 3:50 p.m.
2:10 p.m. classes at 4 to 5:50 p.m.

Note: Classes that meet after 3 p.m. will have final exams on the last night of class. The schedule is below.

Monday-Wednesday night classes will not hold class on May 25 as it is a holiday but will give finals on May 27

Tuesday-Thursday night classes will hold finals on May 28

Monday night classes will hold finals on May 18

Tuesday night classes will hold finals on May 26

Wednesday night classes will hold finals on May 27

Thursday night classes will hold finals on May 28.

Nathan Sasso

By CARL HEINCKER

Have you ever been to Lebanon? Well, look up Nasser "Nathan" Ali Sasso and he will take you there.

Born in 1961 in South Lebanon, Nathan has been in this country for two years.

He spent his first year in Paloalto, California attending high school. From there he went to Iowa State University and played for the soccer team as goalie.

Nathan is a business major here at the Boone Campus and he hopes to become a jet pilot.

In 1975 and 1976, while he was 15 years old, Nathan was fighting for the Red Cross during the Lebanese Civil War. Of this he said, "I never fought for politics. Just to save lives."

Nathan misses his country "very much", but thinks that America is "beautiful."

When asked what he missed most about Lebanon, he replied "my mother." She works in the olive business near the Israille border. His father owns a diamond mining company in west Africa.

He has three brothers in this country, one of which is a doctor in Baltimore. The others have graduated from Iowa State University with degrees in Civil Engineering and Business, respectively.

Nasser believes (unlike many Americans) that the Middle East is safe from the Russlans. "The Russians have no hope in the Middle East," he exclaimed. "Everyone hates them very much."



THE RECREATION CLUB held a fund-raising carwash on April 11 to earn money for an October 1981 trip. Many members of the group worked

through the day and got more soap and water on themselves than on any car.

Tradition isn't traditional at Boone

By MARCIA MATT

Although college students are normally thought to be recent high school graduates of approximately 18 years of age, such is not always the case in a two-year college.

A traditional Des Moines Area Community College student, for example, is defined by the 1980 Fall Student Information Book as being a white, 23-year-old female carrying 13 credit hours in a career education program on the Ankeny Campus. She is single, has no handicaps and is receiving some type of financial aid. To make ends meet, she also works 29 hours a week while going to school. Born and raised in Polk County, she makes a round trip of 23 miles daily between home and campus. She selected DMACC because of the programs it offers.

Using this definition, many Boone Campus students fall into a non-traditional student category. They are either younger or older than the "typical" age, foreign or married.

According to Boone Campus Director of Student Affairs, George Silberhorn, these students attend the campus for a

variety of reasons. Some older students have returned to school, he says, to receive additional job skills or to improve existing ones. Many attend for personal enrichment. Such is the case with Dorothea Fitzgerald, a Boone Campus student.

Fitzgerald, who originally attended the Boone Junior College from 1930-1932, is now taking courses in order "to keep my brains working," she says. Fitzgerald says that she just takes what she "wants to take" in the way of courses on the campus and is also a member of the Bear Facts publication staff.

Mother of three and Boone Campus student Florence Nimmo, said that she waited to attend college because it took her 20 years to "believe" in herself.

Nimmo, who will graduate this month with certificates in both the Bookkeeping-Accounting program and the Secretarial program, as well as an Associate of Arts degree, says that she loves it at the DMACC. "It is a nice, informal, friendly college."

She went on to explain that although students often begin a course not knowing how to relate to her, they treat her "just like any other student" by midterm.

Who's who

The 1981 edition of "Who's Who Among Students In American Junior Colleges" will carry the names of 26 students from the DMACC, Boone Campus who have been selected as being among the country's most outstanding campus leaders.

Campus nominating committees and editors of the annual directory have included the names of these second year students at the Boone Campus based on their academic acievmnt, service to the community, leadership in extracurricular activities and future potential.

They join an elite group of students selected from more than 600 institutions of higher learning in all 50 states.

Outstanding students have been honored in the annual directory since it was first published in 1966.

Students named this year from the Boone Campus are: Kathleen Abel (Ames), Wayne Abrahamson (Boone), Jeffrey Adams (Madrid), Jane Boesen (Boone), William Carlson (Eau Claire, Wisconsin), John Chelsvig (Boone), Sam Crouse (Dallas Center), Marc Frette (Jewell), Margareta (Ray) Geneser (formerly from Boone, now resides in Granger), Walter Lynn Green (Boone), Craig Howard (Boone), Kevin Israel (Ames), Jody (Wilhelm) McElwee (Boone), Florence Nimmo (Ogden), Tim Orr (Boone), Greg Paris (Boone), Merrill Preiss (Rockland, Michigan), Sherry Roper (Jefferson), Duane Sayre (Jefferson), Juli Sealine (Boone), Kerin Springer (Boone), Susan Sternquist (Boone), Brett Stumbo (Ogden), Laura Swanger (Mapleton), Linda Franklin (Cambridge), Kathy (Kinzie) Crawford (formerly from Van Wert now resides in Boone).

Ellisabet Sandberg is a student both on the Boone Campus and at the Boone High School. Throughout the year, she has been taking the various Composition courses on the campus in order to get a "head-start" on her upcoming four-year college education.

Sandberg says that she enjoys Boone Campus because it "gives me an idea of what I have waiting for me next year."

Barb Sage had already spent one year at a four-year college before she enrolled on the Boone Campus.

Sage (who was a Boone Campus student through the winter quarter of 1981) is one of many married students at Boone. She registered in hopes of improving the grade point average she earned at Iowa State University. She was also a Boone Bear cheerleader.

Studio III toured

The scene was more extraordinary than its description. For the theater was Studio III in Ames — this areas triple-X movie house. The people were the students of the Boone Campus, DMACC Human Sexuality class. The May 18 "field trip" to studio III was a scheduled class assignment for the 28 Human Sexuality students, who displayed preliminary reactions from blatant eagerness to muted doubt and hesitancy at the thought of going.

Thanks to Rick Davis, proprietor of Bourbon Street Enterprises of which Studio III is a subsidiary, the entire class was admitted to the theater free of charge.

"In all, I think it is beneficial for adults to see films like this at least once," Plo said. "Everyone is entitled to reactions, but they should know what they are talking about. This field trip is part of the education process and tells one more about the psychological workings of our society as a whole than mere discussion could have provided."