

Des Moines Area Community College Open SPACE @ DMACC

Banner News

Student Work

12-11-1981

Banner News

Marcia Matt

Darla Dixon

Jeff Johnson

Bill Giery

Follow this and additional works at: http://openspace.dmacc.edu/banner_news

Recommended Citation

Matt, Marcia; Dixon, Darla; Johnson, Jeff; and Giery, Bill, "Banner News" (1981). *Banner News*. 350.
http://openspace.dmacc.edu/banner_news/350

This Book is brought to you for free and open access by the Student Work at Open SPACE @ DMACC. It has been accepted for inclusion in Banner News by an authorized administrator of Open SPACE @ DMACC. For more information, please contact rsfunke@dmacc.edu.

THE BEAR FACTS



Volume IX

December 11, 1981

Issue III

Byron Hamilton resigns as Dean of Boone Campus



"THE LAST EIGHT YEARS HAVE BEEN THE PINNACLE," said Bryon Hamilton upon his resigning as Dean of Boone Campus. Hamilton made the announcement of his resignation in November, and began utilizing his accumulated leave time on Nov. 14. Hamilton, a native of Minnesota, has served as Dean of Boone Campus, DMACC, for the past eight years, a time which he says he will always remember as a good period in his life. A farewell coffee was held for Hamilton by the Boone Campus office staff, faculty and campus personnel, and on hand to extend

their good wishes were, above from the left, Boone Public School Superintendent Don Riemenschneider, Director of Plant Services for DMACC Don Zuck, Hamilton, Boone High School Principal Larry Harrington, and at the right, Carroll Bennett, Vice President for Instruction for DMACC. Until a new Dean is named, Bennett, Hamilton's Administrative Supervisor for the past three years, will be coordinating the operation of the campus with Rich Finnestad.

Activity fees put to good use at Boone Campus

By MARCIA MATT
Bear Facts Editor

QUESTION: What do the following activities have in common? Athletics, cheerleading, drillteam, student senate, Phi Beta Lambda, Recreation Club, publications, drama, Phi Theta Kappa, student center and intramurals, N.S.U.?

ANSWER: They all share the money brought in by the student activity fees on Boone Campus.

This money — \$11 a student per quarter — amounted to 5,000 during the fall quarter of 1981 and was divided among the above activities according to percentages set down by the 1980-1981 Student Senate.

Many students feel that it is unfair for the school to charge additional fees for admission to certain events such as the October Halloween party, or the upcoming Christmas party. But because the total

amount is divided between so many different organizations, it doesn't amount to very much for any given area. Therefore, it is often necessary for many of the groups to raise extra money, according to George Silberhorn, activity director of the Boone Campus.

Admission to the Halloween party was charged to pay for the decorations and refreshments used that
Continued on page 3



Crossword Answers

BOBBY MYRIAD
 O E I C
 GIBBERISH U
 S T P S
 PRE LEARNER I
 E F I N
 C S H
 INDUCT IF M A
 P O A L
 I S PENNILESS
 RECOIL R A E
 N Z O Y
 T Z ESCALATOR
 L I D
 EARTHBOUND

THE BEAR FACTS

Student Editor: Marcia Matt
 Advertising Manager: Darla Dixon
 Photographer: Blake Soder
 Sports: Jeff Johnson and Bill Gelry
 Reporters: Marcia Matt, Darla Dixon, Blake Soder, Jeff Johnson, Hermimla Castro, Kemphone Baccam, Bill Giery
 Advisor: Rosemary Westphalen

The Bear Facts is the official student publication for the Boone Campus of the Des Moines Area Community College. The staff is comprised of campus students and would welcome comments and information from other Boone Campus students and faculty members.

Des Moines Area Community College
 1125 Hancock Drive
 Boone, Iowa 50036

The Editor's Desk

November was the month of Thanksgiving and I was thankful for the end of the fall quarter. (Weren't we all)? I guess that you begin to get burnt out with the same schedule, so a change in curriculum is always nice.

This quarter starts off so nicely that most of us won't even notice that we're in class at all. We spend only two weeks on campus before the holiday vacation, and then enjoy two more weeks of break. BUT, just think what it's going to be like when we come back for the start of a NEW YEAR!!

Just think about all of the studying we'll have to do when we return. (We could all wish that the world will end before then, but there isn't a very good chance that it will. Perhaps a letter of request to Libyan President Kadaffi?).

Anyway, the short time that we do spend on campus during December, is filled with many activities.

All students will enjoy Monday, Dec. 14 — Christmas at Boone Campus. During the day, a variety of holiday happenings will occur, and that evening will find many students enjoying themselves at the annual Christmas dance and party to be held at the Threstle lounge in Boone. MARK YOUR CALENDARS!

The temperature may be cold outside on Dec. 16, but things will be warm in the student lounge when the chili feed takes place. Chili will be served for a few hours that morning and afternoon and it will be a small price to pay for as much as you can eat! Everyone should plan to really pig out that day.

As for the activities of the past month, major activities were almost non-existent as everyone geared up for final exams. The Gong Show was a riot, but it really makes me wonder about the sanity of a few students.

A few gossip happenings also occurred during the month...It seems that Tanya Bogle hit the big "25 - years in age" early in December, and really celebrated the event with her friends that night (happy birthday, Tanya). Quite a few people also traveled to Des Moines already this week to hear the Foreigner concert, and a few more will go to Ames tonight to see the Oakridge Boys.

Perhaps the biggest event of all since our last publication took place in the DMACC office when our famous activity director George Silberhorn (you all know him, he's the man we all run to for advice) attempted to sit down on a chair that simply wasn't there. It is rumored that he landed on the floor on his ---. (Maybe we should find out just how wise it is for us to run to him for advice.)

Merry Christmas everyone (even you George)!

Marcia

Student survey

By DARLA DIXON

We recently asked a few Boone campus students to supply the meaning for the word "antidisestablishmentarianism." Here's what we found out:

Tammy Knight — "It's when you get in a fight with your boyfriend and don't speak to him."

Sandie Cernie — "A Communist anarchy."

Linda Essert — "A bunch of prefixes and suffixes put together."

Tammy Nicklos — "A demolished building."

Lisa Sealine — "It's something you put in your trash can."

Teresa Johnson — "Who cares!"

Jennie Westberg — "It's what happens to people who are on drugs."

Do you know what "antidisestablishmentarianism" is? An opposition to the disestablishment of a church or religious body.

Leftwich
Style Salon

**Five Professional Stylists
 for men and women**

432-4380 Boone 913 Eighth Street

Hawkeye Savings AND LOAN

Iowa Guaranteed Student Loans
 Interest Bearing Checking Accounts

432-1220

8TH & ARDEN STREET
 Boone

**Debbie Fritcher
 Typing Service**

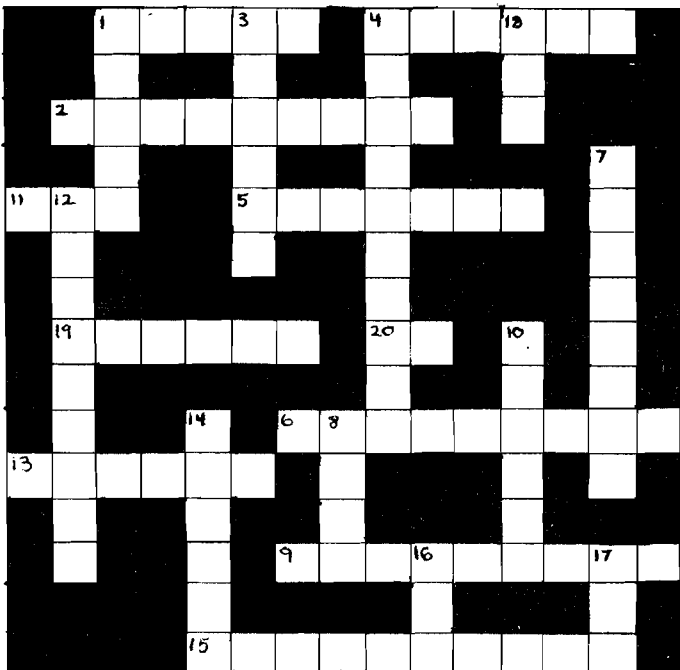
Experienced typist to do typing
 for school and personal use.

1522 Marshall, Boone, Iowa, 432-8031

BOONE CABLEVISION

1002 Story Street Boone, Iowa 50036 432-5129

There is nothing in this world
 like cable TV



Campus Crossword

by Blake Soder

ACROSS

1. British policeman
2. Unintelligible talk or sounds; nonsense
4. A vast number
5. A person who is learning a subject or skill
6. Having no money; very poor
9. Staircase with an endless line of steps
11. Prefix; before
13. To move or spring back
15. Attached to the earth or moving toward Earth
19. To enroll into military service
20. Intermediate Frequency (Abbr.)

DOWN

1. Capital of Idaho
3. To overhang or project; insect with four wings
4. Wrong action or omission by a public official
7. A native of Sri Lanka
8. Greek god of love
10. Group of states forming part of Malaysia
12. A person who receives something
14. To make a hissing sound like that of frying
16. American Institute of Business (Abbr.)
17. Unusual; strange
18. Intensive Care Unit (Abbr.)

Activity fees

Continued from page 1

evening. The remaining profit — less that \$60 — was divided between the cheerleaders, the drill team and the Rec. Club who sponsored the party. (The Student Senate also helped to organize the Halloween dance, but received no percentage of the profits).

The Christmas dance profits will be used to pay for cost of the buttons being sold as admission tickets, and also for the chili feed to be held Dec. 16 in the student lounge. The price for the feed will be 50 cents for all the chili you can eat. Because of this low cost, no additional profit is expected from this event.

No admission is charged to either the homecoming activities in February, or the annual pig roast in May.

The activities and the percentage currently being allotted to them from student activity fees are listed below:

- Athletics, 50 percent
- Cheerleaders-Drillteam, two percent
- Student Senate, 17 percent
- Phi Beta Lambda, three percent
- Recreation Club, three percent
- Student publication, 10 percent
- Drama, six percent
- Phi Theta Kappa, one percent
- Student center-Intramurals, six percent
- Nursing Students United, two percent.



Calendar of events

- DEC. 14: Boone Campus Christmas party at Trestle.
- Dec. 16: Annual holiday chili feed in lounge. All you can eat for 50 cents.
- Dec. 18: The beginning of Christmas break.
- Dec. 25: Merry Christmas Bear Country!
- Jan. 4: Classes resume at Boone Campus.

Pac Man - the latest craze in entertainment

BY DARLA DIXON

It has been a long and tiresome day — beginning before 8 a.m.; and it has been another busy one. Of course when one is a popular mechanical toy, one has to endure a steady diet of quarters.

The small characters race across the screen attempting to munch the large dot which is frantically gobbling up the small dots at the same time. During the musical intermission, these characters identify themselves as the major performers in the Pac Man game — the newest activity craze on the Boone Campus.

Several students have become obsessed with this money munching machine, and it is for this reason that there is always a crowd standing around the south-east corner of the lounge begging one another for quarters.

Many students find the game a comforting way to deal with anxiety, while other find the game to be the cause of anxiety.

To play the game, a student deposits a quarter and depresses the single player button. A network of pathways will then appear on the screen and the

sirens will blare from within.

A control stick movable in four directions directs the path of the large yellow dot which will "munch" on the hundreds of little white dots. Extra points may be earned if the yellow dot successfully gobbles the characters after they turn blue, or by crossing the paths of the other symbols which periodically appear on the screen.

Sound confusing? Well, this is only a part of the way to play Pac Man, but it has become so popular on the Boone campus that almost any student can explain it to those unfamiliar with the procedure.

Natural 98 FM

Music Radio

Cross-Country Music in STEREO

KWBG

1590 KC

News, Weather, and

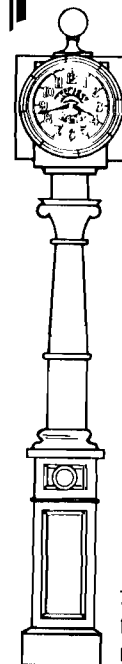
Sports, plus

Jr. College Basketball play-by-play

P.O. Box 366

(515)432-1845

professionals . . .
working together
for your benefit



Citizens National Bank

724 Story Street • Boone, Iowa 50036 • 515-432-7611

Drive-in Bank at 305 Story Street

Member FDIC and Hawkeye Bancorporation



Hotdog singers take top honors at talent show

By **MARCIA MATT**
Bear Facts Editor

It was probably the "shortest" Gong Show in history — lasting just over 12 minutes, but the competition was stiff and the acts were "perfectly polished" (?) for the show. But, they had to be top-notch because the contest was the DMACC Gong Show the the top prize was a giant 13 cent check. (And you know that that's a millionaires' ransom).

The Gong Show was the brain child of the Boone campus Recreation Club and was organized by many energetic campus students.

A number of talented (?) DMACC students participated in the event, and although it often seemed that the same people were appearing in all of the acts, the first effort at a "talent" show was an interesting and comically entertaining break from routine.

Buck (Gary Leland) Charris was the host for the noon-time show of insanity spoofing the once popular television series. He lived up to his Chuck Barris image by donning a variety of zany hats between acts.

Charris was assisted by Karen Folkman and Lisa Overturf who were costumed as Happy Joe restaurant waitresses. The twosome recorded the scores received by each act as awarded by judges Bud (Clair) Abbott, P.U. (Lori Powers) Boxcar and Foster (Bruce Miller) Brooks.

The show opened with The **Boundary Waters** group who were all snuggled up in their sleeping bags for a night of camping in the wilderness. This brave recreation of a recreation club trip went along "smoothly" until the group of brave campers elected to make the process of elimination a joint venture. It was at this point that P.U. Boxcar gonged Ellie Cyr, Paula O'Hare, Jean Golightly, Tanya Bogie and Chrystal Spricher.

Robin Webb and Pam Marnar appeared next as the campus Nerds. Outlandish costumes (formerly worn for the annual Halloween party by some of DMACC's most "distinguished" students), and a horrendous rendition of "Twinkle, Twinkle Little Star" netted the twosome a score of five points.

A regular Gong Show performer — **The Unknown Comic** — deadened the crowd (but lived up to his name) by rattling off too many wellknown jokes and riddles. (Better luck next time, Dave Phelps).

A Bunch of Good Peckers took to the stage next to dance wildly and forcibly encourage many audience members to join them in the "chicken boogie." The judges seemed to enjoy the act and presented them with a final score of 28 points.

It was **Dan Lake** and the **Webb Weiner Wraps** who stole the show, however, with their version of "We Love That Weiner Man." The act consisted of Karen Folkman and Lisa Overturf singing and eating a hotdog held by Dan Lake. It received a perfect score of 30 points — winning the coveted 13 cent grand prize!

The noon-time competition closed with all of the participants humming the theme music to the Gong Show as **Gene Gene** (Fred West) **The Dancing Machine** danced, and balloons, confetti and popcorn (?) flew through the air.

LIBRARY HOURS

Monday-Thursday
8:00 AM-8:00 PM

Friday
8:00 AM-4:15 PM

During vacations and in-service days the library is open 8:00 AM -4:15 PM. Changes in library hours will be posted in advance. You may reach the library by calling 432-7202, ext. 34.

Many ideas discovered as Boone Campus students offer study advice

By **DARLA DIXON**

In the middle of the lounge, with the stereo blaring and lots of people talking is a common study habit for Boone campus students, and a great deal of studying was recently seen around campus due to the "annual" fall quarter final exams.

When asked about their study habits, most students indicated that they use several different methods, depending upon the coursework being done.

Of those preferring to study in the campus lounge, some students claimed this made the task easier because of the availability of breaks from the work. Students said that they often take time out to play a game of pool, ping-pong or pac-man.

One student indicated that although he did his studying in a lounge, it was not on campus. Instead it was at the My Place Lounge in Boone.

On the opposite side of the line are those students who prefer to study in the library. Those using this form of studying, indicated that the quiet atmosphere was necessary.

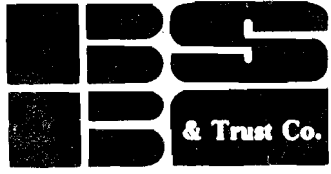
A number of students find that studying with the stereo turned on is helpful. The types of music enjoyed ranged from rock to jazz. (The most popular type was rock).

Several students also said that they study "on the spur of the moment" or when it's too late to learn anything.

The most interesting (and puzzling) answer provided concerned studying with the eyes closed. This method is said to provide a mental picture of the material.

Still other students said that they prefer studying in a comfortable chair, while watching television, or with a person of the opposite sex. (?) (That answer was as misleading as the student who enjoys studying (?) in the bedroom.)

Boone State Bank


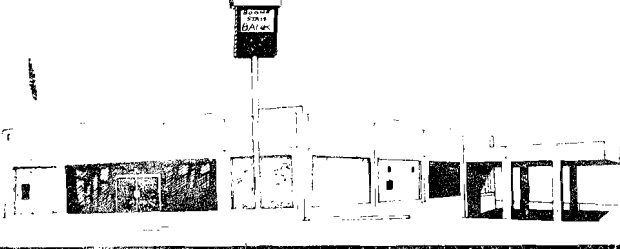


Boone, Iowa

Boone State Bank & Trust Company

P.O. Box 428 Boone, Iowa 50036 Phone: 432-6200
Offices at: Beulah, Iowa, and 1326 South Story Street, Boone, Iowa

WE WANT TO BE YOUR BANK



WITH SPECIALS

EVERY DAY

open 24 hours a day

1703 South Story

432-1554

You Doo-It Store

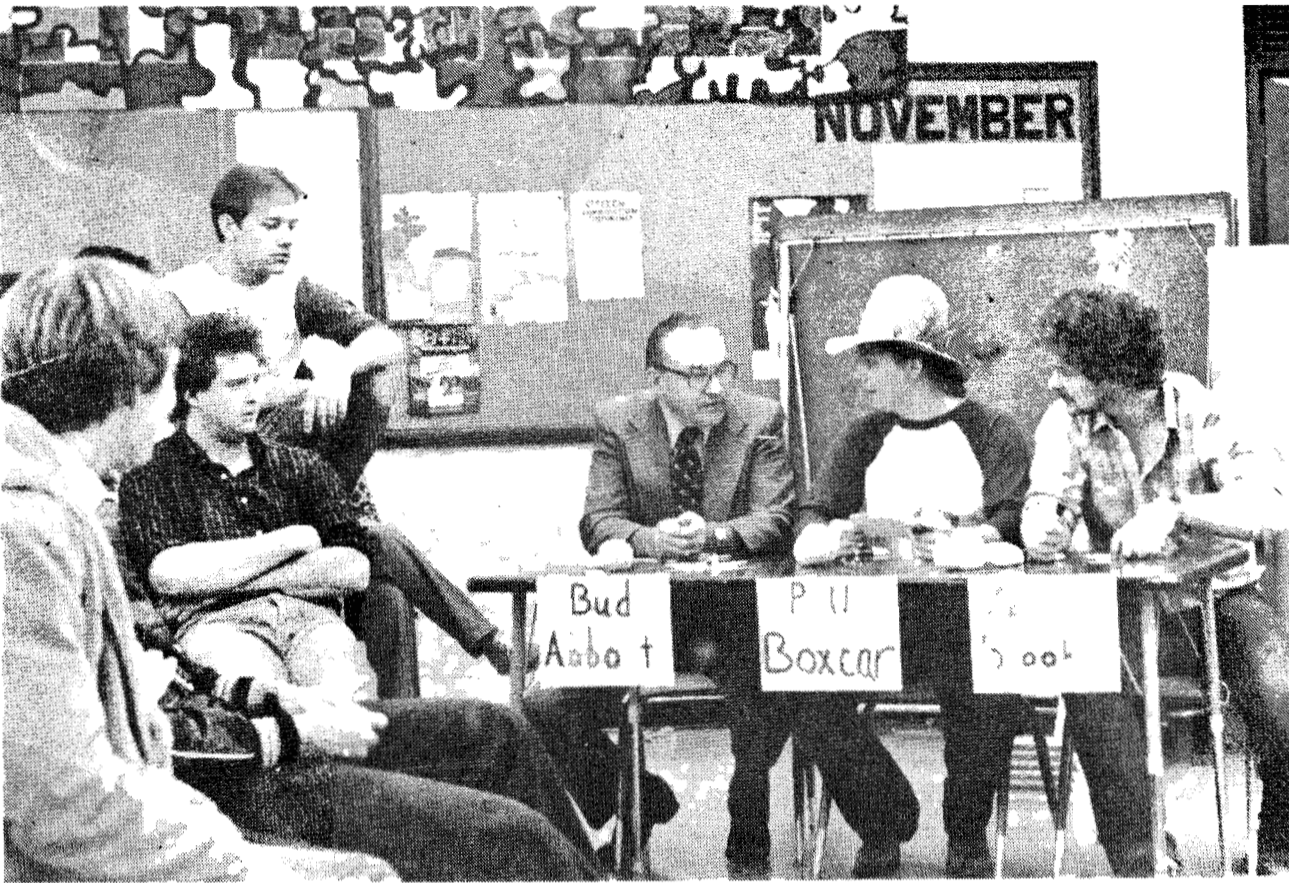
LUMBER: PAINTS: HARDWARE

Custom Picture Framing and Supplies

OPEN 7 to 5 MON - SAT

927 Story St. Boone, Iowa 50036

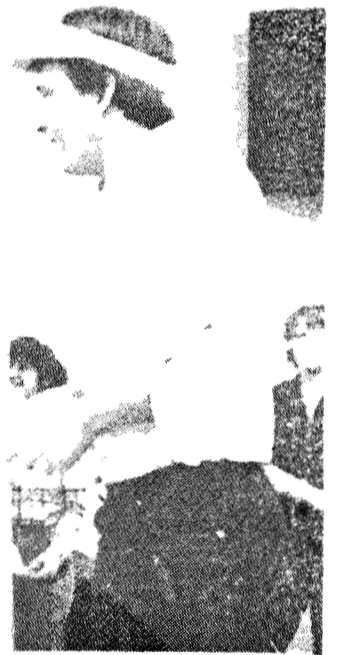
432-6426



Photos by Blake Soder

Here they are

Boone Campus Gong Show!



THE GONG RANG AND THE ACTS commenced at the Gong Show held in the Student Lounge of Boone Campus. Top left picture, the fate of the contestants rested in the hands of these upright citizens of DMACC — the Judging Panel. From left to right the judges are Bud (Clair) Abbott, P.U. (Lori Powers) Boxcar, and Foster (Bruce Miller) Brooks. Top right, the newest in campus fashions was modeled by Karen Folkman and Lisa Overturf, who later won the grand prize by singing "We Love the Weiner Man." Center, left to right, the "Nerds", Robin Webb and Pam Marnar perform. Dan Lake watches; Dan Lake holds a hot dog, his contribution to winning the Grand Prize; and Host of the show, Buck Charris (Gary Leland) at far right. Bottom row, center, the Unknown Comic (Dave Phelps) was better for being unknown following his act, and lower right corner, the chickens were restless and encouraged the audience to become a "Bunch of Good Peckers."





Cheering helps keep spirits high in Bear Country

By DARLA DIXON

The cheers and yells are loud and clear when the DMACC cheering squad takes to the gymnasium floor. The group of five women and three men is responsible for stirring up that "Bear Spirit" on campus.

The 1981-1982 squad includes:

June Barkwill — June is a 1980 graduate of Boone High School where she was active in swimming, cheerleading and track. At the Boone campus, she is involved in the Accounting-Administrative Business area and is a member of PBL and is its representative in the Student Senate. She is also a co-captain of the cheerleading squad. June plans to continue her education at the University of Northern Iowa.

Cindy Russell — Cindy is a 1981 graduate of Boone High School, majoring in the Administrative Secretarial program. Her high school activities included swing choir, jazz band, chorus, orchestra, drama and Thespians. On campus she active in PBL, as well as cheerleading. Cindy received the Professional Business Student of the Year award in 1981.

Jennie Westberg — Jennie is a 1981 graduate of Boone High School majoring in the Administrative Secretarial program. While in high school she was active in band, jazz band, chorus and publications. She is now a member of both the cheerleading squad and PBL at the Boone campus.

Deanne Mills — Deanne is a 1980 graduate of high school in Chehalis, Washington where she enjoyed playing the flute in school and in the Washington All State Band. She is majoring in Liberal Arts at the Boone Campus.

Dave Phelps — Dave is a 1980 graduate of Bayard High School and is now a member of the Rec. Club, drama and the cheerleading squad. He also coaches youth sports for the YMCA in Boone. While in high

school, Dave was also active in 4-H and was on the swimming team — being a member state champion team. He is majoring in Recreational Leadership at the Boone campus.

Ron Bunting — Ron is a 1978 graduate of Ames High School and is now active in recreation, drama and PBL. He is enrolled in the Accounting program on campus and plans to transfer to the University of Northern Iowa following his sophomore year.

Dale Carhill — Dale is a sophomore at the Boone campus and is a 1980 graduate of Perry High School where he was active in publications, student government, wrestling and as a foreign exchange student to Holland. At the Boone campus, Dale enjoys dramatics and is a Liberal Arts major.

Shaela Young — Shaela is a sophomore at the Boone Campus and is a co-captain of the cheering squad.



KEEPING THE CHEERS GOING STRONG at the Boone Campus basketball games this season are members of the 1981-1982 squad. Co-captains for the squad are Shaela Young and June Barkwill, and for the first time, three men are among the cheerleaders. Squad members pictured above include: (bottom row) Shaela Young; (middle) Jennie Westberg, Ron Bunting, Dave Phelps, Dale Carhill and Deanne Mills. On Dave Phelps' shoulders are June Barkwill and Cindy Russell. Photo courtesy of Boone News-Republican.

Chan's
Chinese
Restaurant

旦
現
天
果

1217 S. Story St.

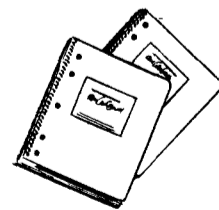
Private Parties Available
100 - Person Capacity
Reservations 432 - 7492

Hours:
Mon - Thur 11:30 a.m. - 9:30 p.m.
Fri - Sat 11:30 a.m. - 10:30 p.m.
Sunday 11:30 a.m. - 9:30 p.m.
Closed 2:30 - 5:00 p.m. every day.

Back packs

Supplies

Boone Campus
bookstore



Also see us for

DMACC Sweaters and T-shirts



In-school sports popular

By JEFF JOHNSON

Intramural activities are getting into full swing around the Boone campus as the winter quarter stirs up more student participation in the on-campus events.

Intramural activities include bowling, basketball and volleyball.

The success of intramural activities isn't the quality of competition, but instead, the quantity of student participation. Athletic ability is somewhat overlooked when recruiting for such competition.

Bowling has already started with 10 teams of three members each competing every Monday afternoon. Basketball and volleyball will begin in January.

Posters and roster slips are located in the hall next to the campus office. Fees are not required for basketball or volleyball.

Season opener a success

By BILL GIERY

The Boone Bears beat Indian Hills in the 1981-82 season opener Nov. 21 by a score of 57-56. After trailing by as many as 11 points early on, the Bears cut it to just seven by halftime due to the shooting of sophomore forward Todd Peterson.

As the second half opened, the Boone press started to take effect causing numerous turnovers.

The Bears had their share of turnovers, too. In the closing minutes, the Boone team led by six points, but lost the lead on two turnovers and two poor shots.

The Falcons of Indian Hills capitalized on the mistakes and took the lead for a moment before sophomore guard, Brett Stumbo hit a reverse lay-up with 21 seconds on the board. This proved to be the winning basket.

The Falcons missed an easy lay-up on the final play and sophomore center Dave Dunkelberger got the rebound to ice the game.

Dunkelberger finished with 14 points and nine rebounds, as did Todd Peterson. Freshman guard, Johnny Jackson lead the local scoring with 15 points and seven rebounds. Freshman Keith Wilson had eight points and Brett Stumbo added six.

Men's 1981-82 Basketball Sched.

Nov. 21	Centerville	7:30
Nov. 27-28	Penn Valley Tourn. at Kansas City, MO	6:30
Dec. 2	Fort Dodge	8:00
Dec. 7	William Penn	8:00
Dec. 9	Kirkwood	8:00
Dec. 12	Sioux Empire	3:00
Dec. 15	Council Bluffs	8:00
Dec. 19	Mason City	8:00
Jan. 11	Waldorf	8:30
Jan. 13	Creston	8:00
Jan. 16	Marshalltown	8:00
Jan. 18	Clarinda	7:30
Jan. 20	Kirkwood	6:00
Jan. 23	Ellsworth	8:00
Jan. 25	Mason City	8:15
Jan. 30	Clarinda	8:00
Feb. 2	Sioux Empire	8:00
Feb. 4	Centerville	7:30
Feb. 6	Iowa Lakes	8:00
Feb. 8	Ellsworth	8:15
Feb. 13	Council Bluffs	2:00
Feb. 16	Creston	8:00
Feb. 18	William Penn	6:30
Feb. 20	Marshalltown	8:00
Feb. 22	Waldorf	8:00
Feb. 24	Iowa Lakes	6:00
Feb. 27	Fort Dodge	7:30
Mar. 3-5-7	Region XI Tourn. at Mason City	TBA

BOONE CAMPUS BASKETBALL SCHEDULE 1981-82 SEASON

Women's 81-82 Basketball Sched.

Nov. 20-21	Fort Dodge Tourn. at Fort Dodge	5:00
Dec. 2	Fort Dodge	6:00
Dec. 5	Ottumwa	3:00
Dec. 7	William Penn	6:00
Dec. 9	Creston	6:00
Dec. 12	Sioux Empire	1:00
Dec. 15	Council Bluffs	6:00
Dec. 17	Fort Dodge	7:30
Dec. 19	Mason City	6:00
Jan. 11	Waldorf	6:30
Jan. 13	Creston	6:00
Jan. 16	Marshalltown	6:00
Jan. 18	William Penn	7:30
Jan. 20	Kirkwood	8:00
Jan. 23	Ellsworth	6:00
Jan. 25	Mason City	6:15
Jan. 30	Clarinda	6:00
Feb. 2	Sioux Empire	6:00
Feb. 6	Iowa Lakes	6:00
Feb. 8	Ellsworth	6:30
Feb. 11	Ottumwa	7:30
Feb. 13	Council Bluffs	4:00
Feb. 16	Clarinda	6:00
Feb. 18	Kirkwood	7:30
Feb. 20	Marshalltown	6:00
Feb. 22	Waldorf	6:00
Feb. 24	Iowa Lakes	8:00
Feb. 26-28	Regional Tournament at Marshalltown	TBA

Bold listings denote home games

Bears split in Penn Valley tournament

By BILL GIERY

The Boone Bears traveled to Kansas City over the Thanksgiving holiday to play in the Penn Valley Tournament.

In the opening game for the Bears, they took Fort Scott of Kansas, 71-69. The next night they lost to Penn Valley, 82-72.

In the first game, sophomore center Dave Dunkelberger hit the game winning shot with 16 seconds on the board. The score capped a tremendous comeback by the Bears. Before the winning shot, the Bears had trailed by as many as ten points, but returned with their swarming defense to win the game, 71-69.

Dunkelberger led all scorers with 24 points. He also grabbed 12 rebounds and had two steals. Johnny

Jackson finished with 17. Keith Wilson had 15 points and six assists. Todd Peterson pumped in 12 baskets and had seven rebounds. Brett Stumbo had two and Bill Giery added one to round out the Boone scoring pattern.

In the second game against Penn Valley, Boone lost two of its starters due to foul trouble in the second half, and came out on the short end of the 82-72 final score. The bears had it as close as four points at one time, but that was as close as they got to winning.

Dave Dunkelberger had 20 points, with Todd Peterson adding 18. Johnny Jackson and Brett Stumbo had 14 and 10 respectively. Keith Wilson had eight points and five assists, and Steve Russell added two more points.

Lynn's Lounge

MONDAY: Monday Night Football

THURSDAY: College Day
Happy Hour 1:00 to 6:30

FRIDAY: Free Food

MONDAY thru THURSDAY:
Happy Hour 1/2 5:00 to 6:30

Good Food Everyday Draws 30c

HAPPY HOUR 1/2 Pitchers \$2.00

Junior Fashions

813 Story St. Boone

For the latest
in fashions
shop Junior Fashions

Sizes 5-15 6-18

Virginia's Flowers and Gifts

distinctive designing
of floral arrangements
for every occasion

any occasion calls
for Flowers

Always Fresh Flowers

Flowers
delivered
anywhere

702 Keeler

Boone

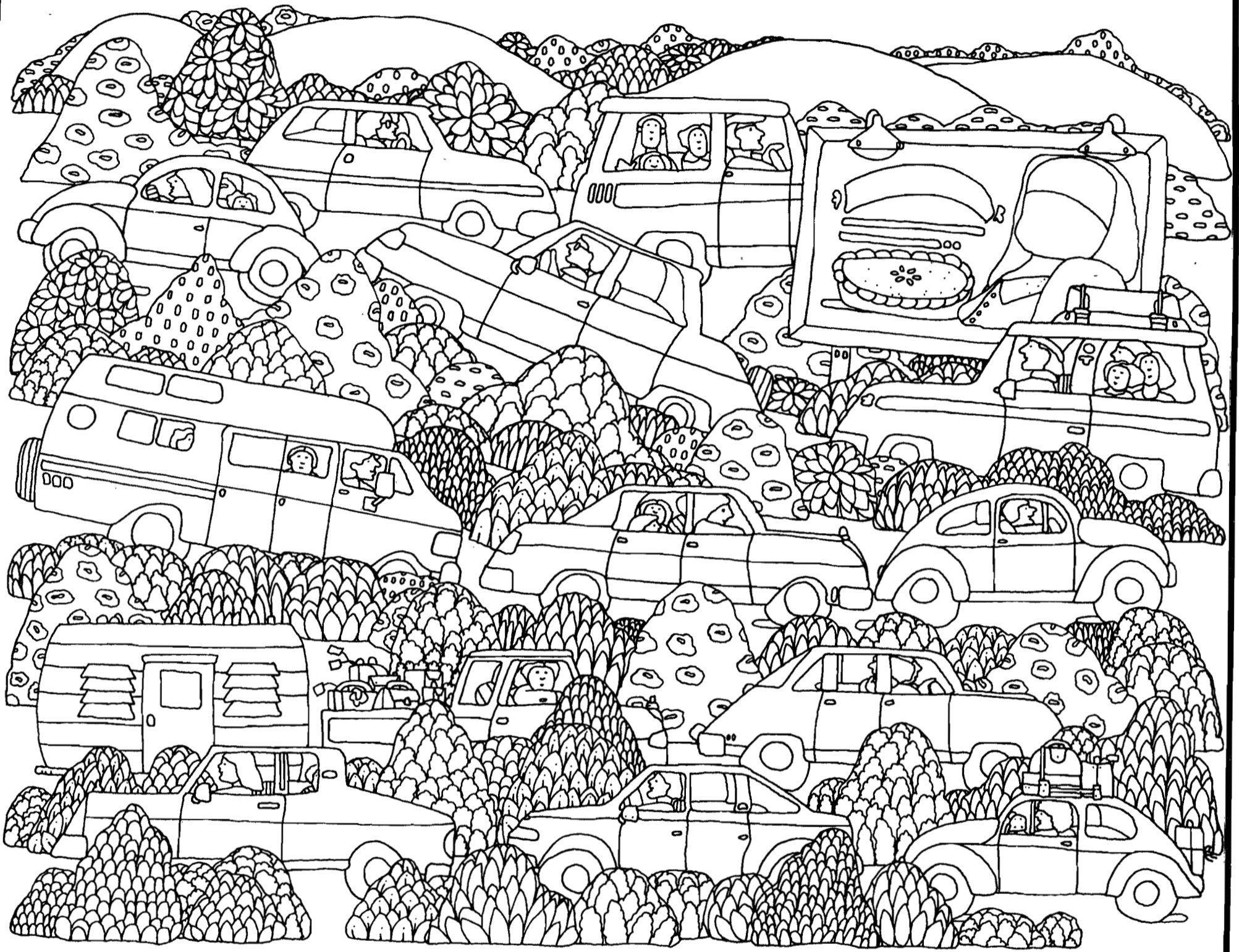
SHOES BY:

Dingo Adidas S.A.S. KEDS
Leather 'n Things Danelle
Red Wing Hush Puppies Morgan Quinn Bass
Dexter Florsheim Clinic

AT FISHER'S
SHOE STORE

721 STORY

OPEN THURSDAY NIGHTS



**JOIN THE
CROWD AT...**



415 STORY, BOONE AMES SOUTHRIDGE OKOBOJI