

1891

Salem, Past and Present

Fred H. Allen

Follow this and additional works at: https://digitalcommons.salemstate.edu/books_pamphlets

Recommended Citation

Allen, Fred H., "Salem, Past and Present" (1891). *Books & Pamphlets*. 27.
https://digitalcommons.salemstate.edu/books_pamphlets/27

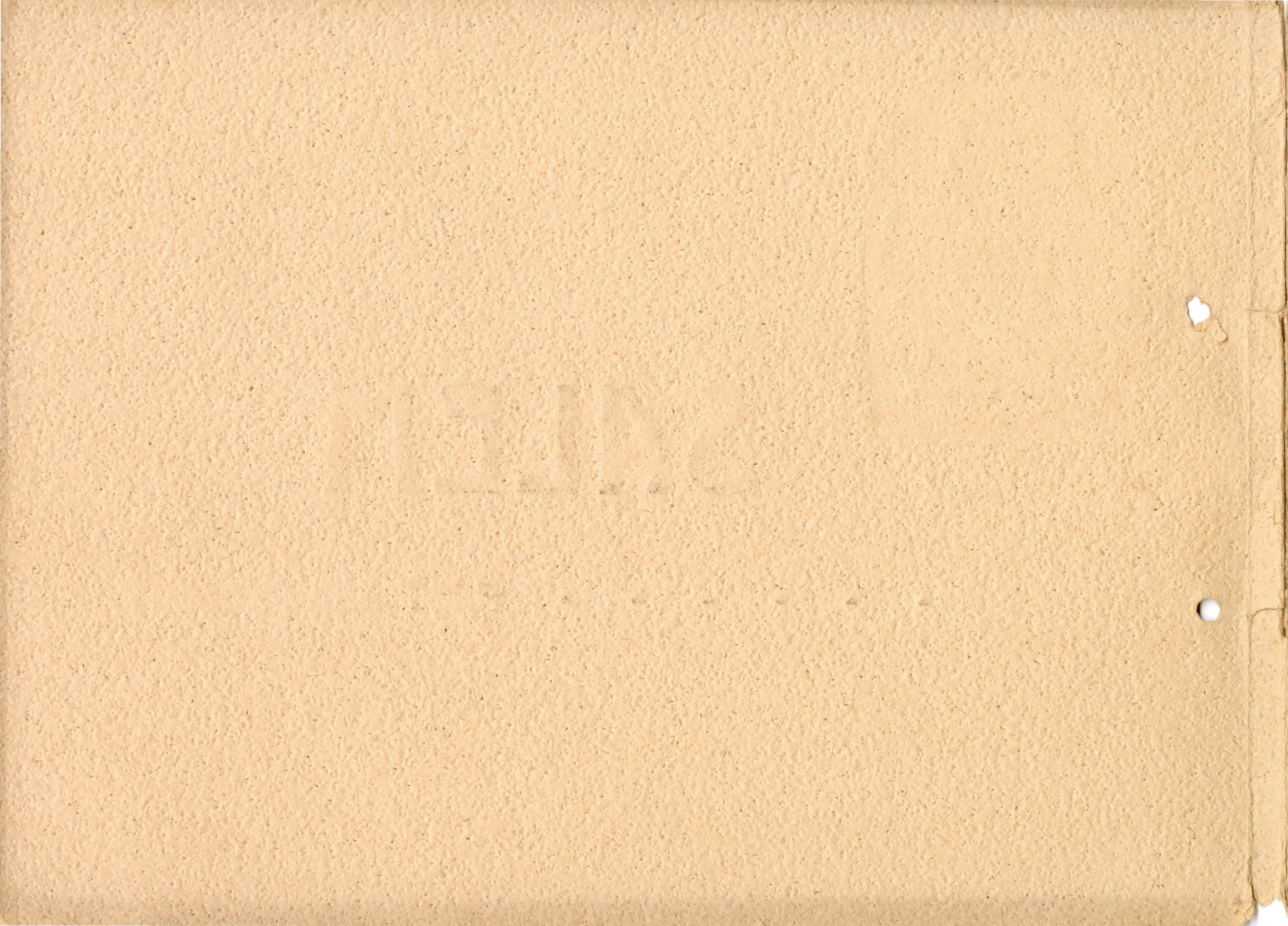
This Book is brought to you for free and open access by the Archives and Special Collections at Digital Commons at Salem State University. It has been accepted for inclusion in Books & Pamphlets by an authorized administrator of Digital Commons at Salem State University.




Gov. JOHN ENDICOTT.

SALEM

▲ ▲ ▲ ▲ ▲ ▲ PAST AND PRESENT.



|| SALEM, ||

PAST AND PRESENT. 

HELIOGRAVURES
PRESS OF
FRED H. ALLEN & Co.
BOSTON.

COPYRIGHT, 1891,
BY ALMY, BIGELOW & WASHBURN.

PUBLISHED BY
ALMY, BIGELOW & WASHBURN,
SALEM, MASS.

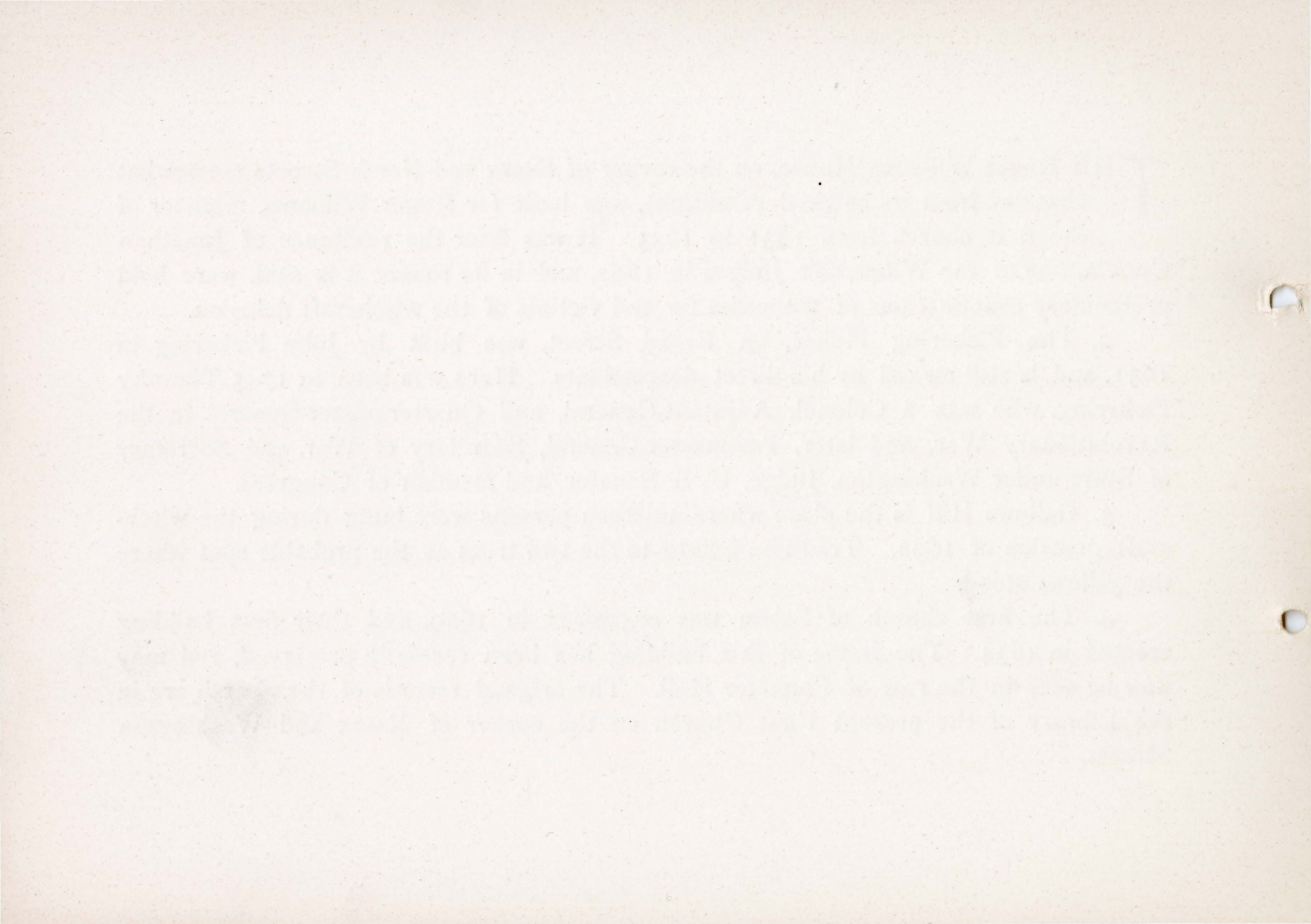


THE Roger Williams House, on the corner of Essex and North Streets (somewhat changed from its original condition), was built for Roger Williams, minister of the first church from 1631 to 1635. It was later the residence of Jonathan Corwin, one of the Witchcraft Judges in 1692, and in its rooms, it is said, were held preliminary examinations of witnesses for and victims of the witchcraft delusion.

2. The Pickering House, on Broad Street, was built by John Pickering in 1651, and is still owned by his direct descendants. Here was born in 1745 Timothy Pickering, who was a Colonel, Adjutant-General, and Quartermaster-General in the Revolutionary War, and later, Postmaster-General, Secretary of War, and Secretary of State under Washington, Judge, U. S. Senator, and member of Congress.

3. Gallows Hill is the place where nineteen persons were hung during the witchcraft delusion of 1692. Tradition points to the two trees as the probable spot where the gallows stood.

4. The first church of Salem was organized in 1629, and their first building erected in 1634. The frame of this building has been carefully preserved, and may now be seen in the rear of Plummer Hall. The original records of the church are in the Library of the present First Church on the corner of Essex and Washington Streets.



5. The Narbonne House, 71 Essex Street, was built in 1680 and possibly earlier.
6. The Waller House on St. Peter Street, is an early specimen of Colonial architecture, having a jutting upper story thought by some to be for defensive purposes.
7. The Old North Bridge. Here on Feb. 26, 1775, Lt.-Col. Leslie, with a portion of the 64th Regiment of British regulars, sent from Boston to seize cannon and ammunition stored in Salem, was confronted by the Essex regiment under command, it is said, of Col. Timothy Pickering, and compelled to retreat without accomplishing his object. This was the scene of the first armed resistance to Great Britain in the Revolutionary War.
8. Hawthorne's Birthplace is the house numbered 21 on Union Street. Here Hawthorne was born July 4, 1804, and lived until he was four years old, when his mother moved to No. 10 Herbert Street.
9. The House of the Seven Gables is on Turner Street, and was built about 1680. Whether Hawthorne's "House of the Seven Gables" or not, it is one of the oldest in the city, and worth visiting—and Hawthorne was certainly a frequent visitor at this house.
10. The Custom House. This was built in 1819, and here Hawthorne, while

The following table shows the results of the survey conducted in the year 1950. The data is presented in a tabular form for easy reference. The first column represents the different categories of the survey, and the subsequent columns show the corresponding values or percentages. The total number of respondents for each category is also indicated. The survey was conducted in a systematic manner to ensure the accuracy of the data. The results are as follows:

Category	Value/Percentage	Total Respondents
Category 1	15%	100
Category 2	25%	100
Category 3	35%	100
Category 4	25%	100

The survey results indicate that the majority of respondents (35%) fall into Category 3, while the smallest group (15%) is in Category 1. The data suggests a clear distribution across the categories, with Category 2 and Category 4 representing intermediate proportions. The overall findings are consistent with the expected outcomes of the survey. The data is reliable and provides a clear picture of the survey results. The survey was well-received by the participants, and the results are presented in a clear and concise manner. The data is presented in a tabular form for easy reference. The first column represents the different categories of the survey, and the subsequent columns show the corresponding values or percentages. The total number of respondents for each category is also indicated. The survey was conducted in a systematic manner to ensure the accuracy of the data. The results are as follows:

Surveyor of the port, 1846 to 1849, is said to have found the manuscript telling the story of Hester Prynne, which he afterward extended into "The Scarlet Letter."

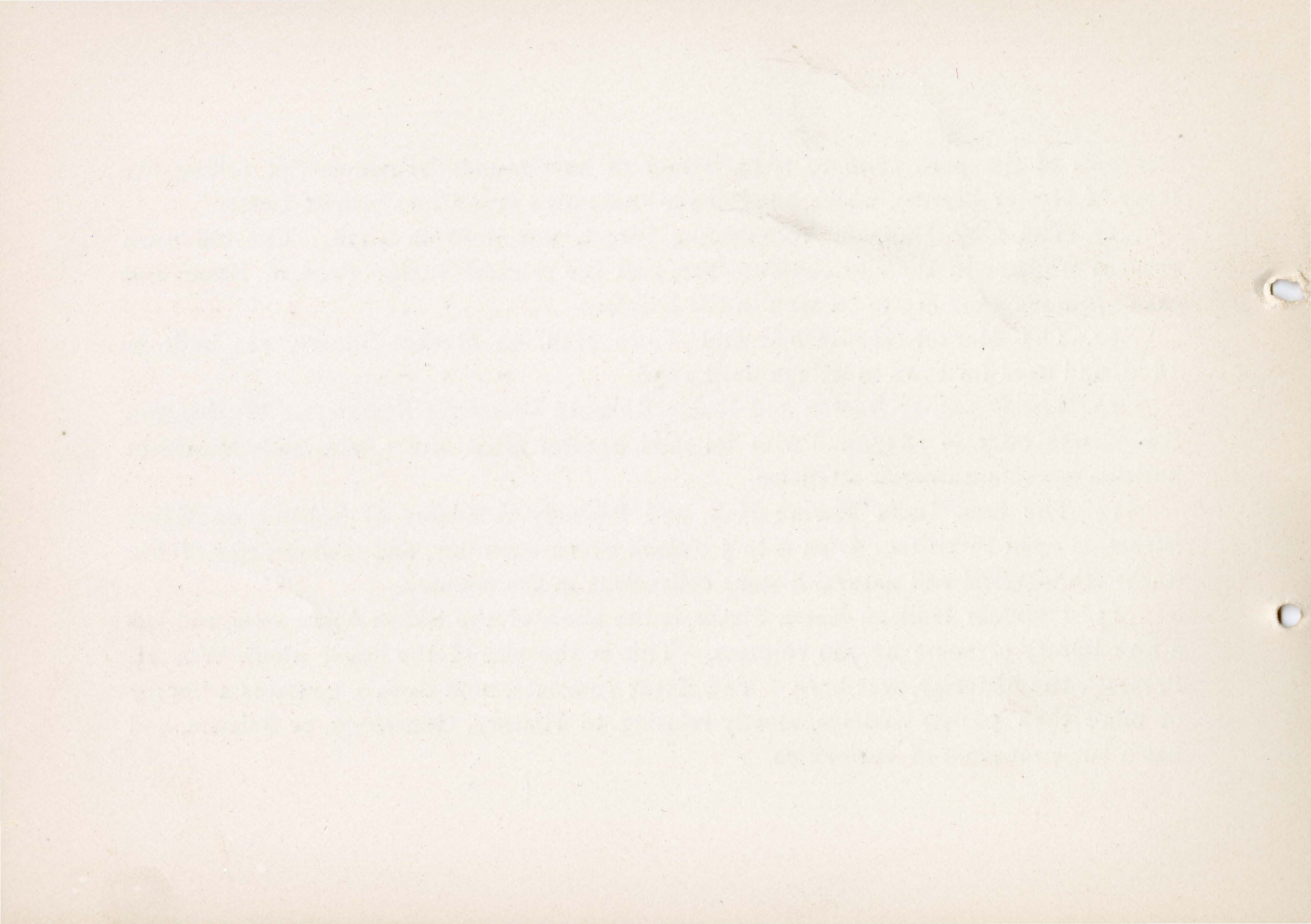
11. The City Hall, on Washington Street, was built in 1838. The old town records are here in the city clerk's office, and the original Indian deed of Salem and many fine portraits are to be seen in the building.

12. The Market House and Old Town Hall, on Market Square, was built in 1816, and used for town meetings until 1836.

13. The Depot, or Boston and Maine Railroad Passenger Station, on Washington Street, was built in 1847, and with its solid granite front and towers and prominent position attracts universal attention.

14. The East India Marine Hall and Peabody Academy of Science, on Essex Street, is open to visitors from 9 to 5 o'clock every week-day, and contains one of the finest ethnological and natural history collections in the country.

15. Plummer Hall, on Essex Street, is the home of the Salem Athenæum, and has a fine library of some 22,000 volumes. This is the site of the house where Wm. H. Prescott, the historian, was born. The Essex Institute, next to this, contains a library of more than 50,000 volumes, mostly relating to History, Genealogy, or Science, and has a large museum of curiosities.



16. The Cadets' Armory is the home of the Second Corps of Cadets, and is supposed to occupy the site of the house where Gov. Endicott cut the cross from the British flag in 1634, and also is the site of the spot where Gov. Bradstreet resided.

17. The Public Library is on Essex Street, corner of Monroe, and the building was given to the city for that purpose in 1887 by the heirs of Capt. John Bertram. It has now (1891) about 23,000 volumes.

18. The State Normal School for girls is on Broad Street, and has several hundred pupils.

19. The Court Houses are on Federal Street, corner of Washington. Here may be seen many documents relating to the witchcraft trial, and also the famous "Witch pins," and many valuable portraits.

20. Almy, Bigelow & Washburn, who publish the Souvenir, though not among the "Ancients," have long been identified with Salem. Their business was established in 1858. It has always promoted modern ideas. It is a metropolitan establishment and illustrates the "Bon Marche" principle of grouping many departments or stores in one. Mail orders are a specialty with this firm, and it does a larger business in proportion to the population than any other American firm, and the largest business of any firm of similar character east of Boston.

Faint, illegible text, possibly bleed-through from the reverse side of the page. The text is arranged in several paragraphs and is too light to transcribe accurately.



ROGER WILLIAMS' HOUSE.



Small, illegible handwritten mark or scribble in orange ink.





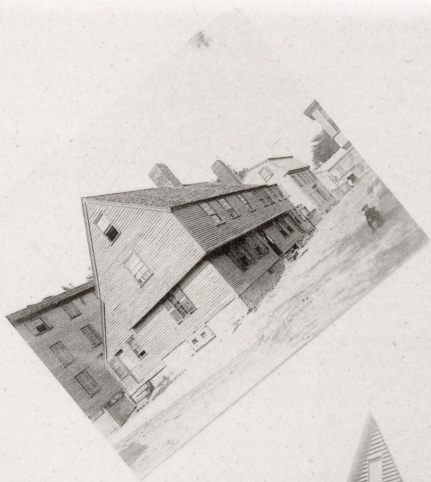
THE PICKERING HOUSE.



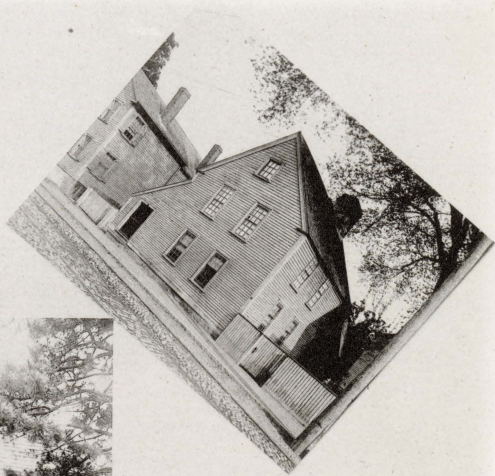


GALLOWS HILL.





THE WALLER HOUSE.



THE NARBONNE HOUSE.



FIRST CHURCH.





THE NORTH BRIDGE.





HAWTHORNE'S BIRTHPLACE.



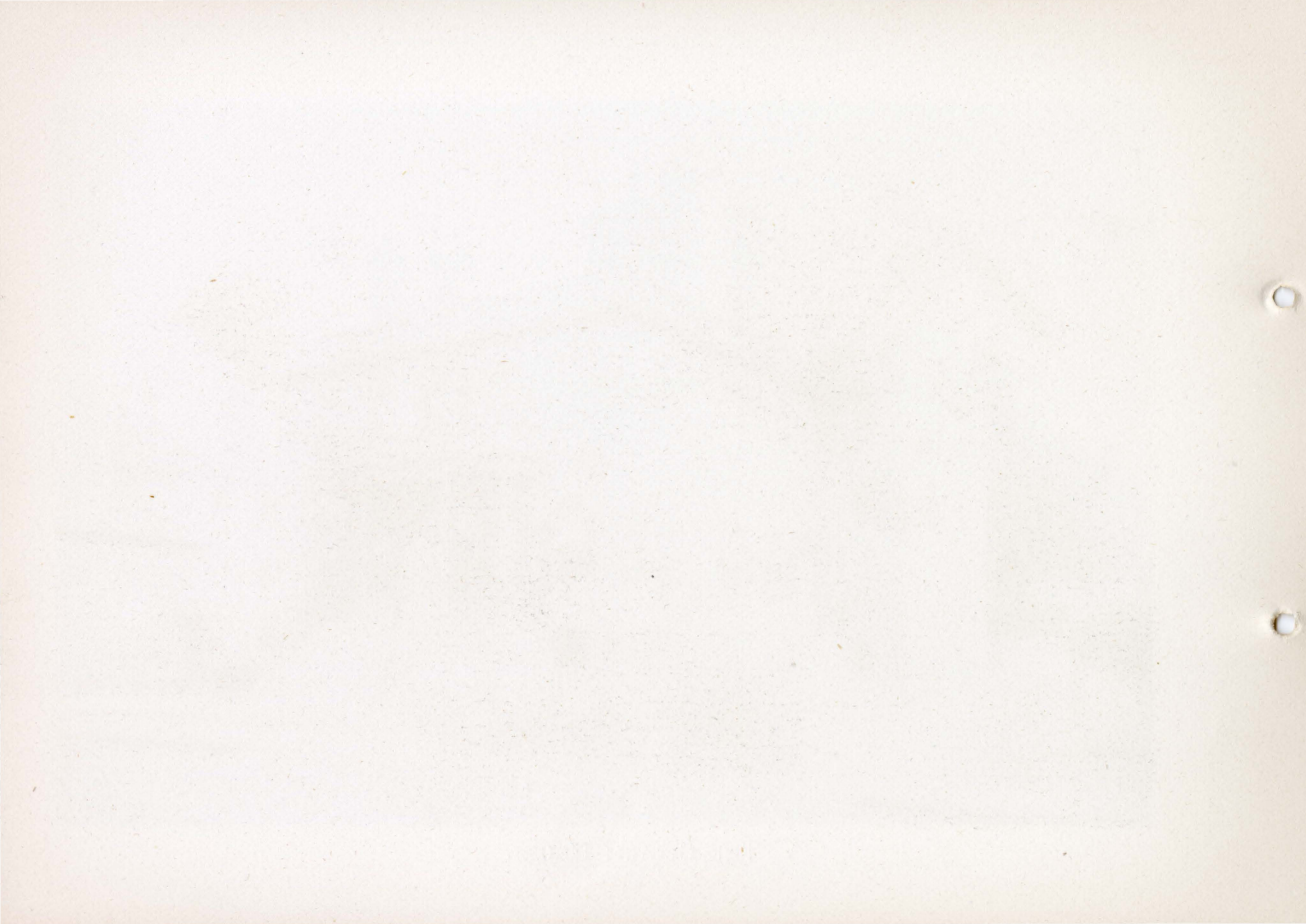


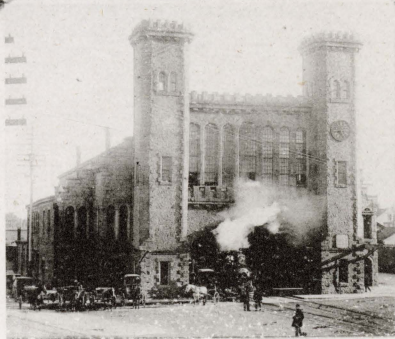
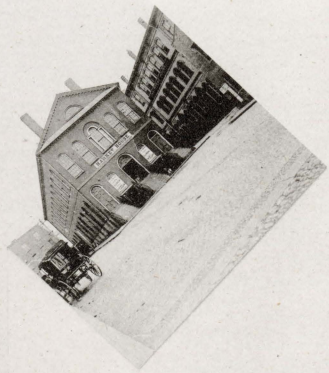
THE HOUSE OF SEVEN GABLES.





THE CUSTOM HOUSE.





THE CITY HALL.

B. & M. R.R. PASSENGER STATION.

THE MARKET HOUSE.





PEABODY ACADEMY OF SCIENCE.





PLUMMER HALL.

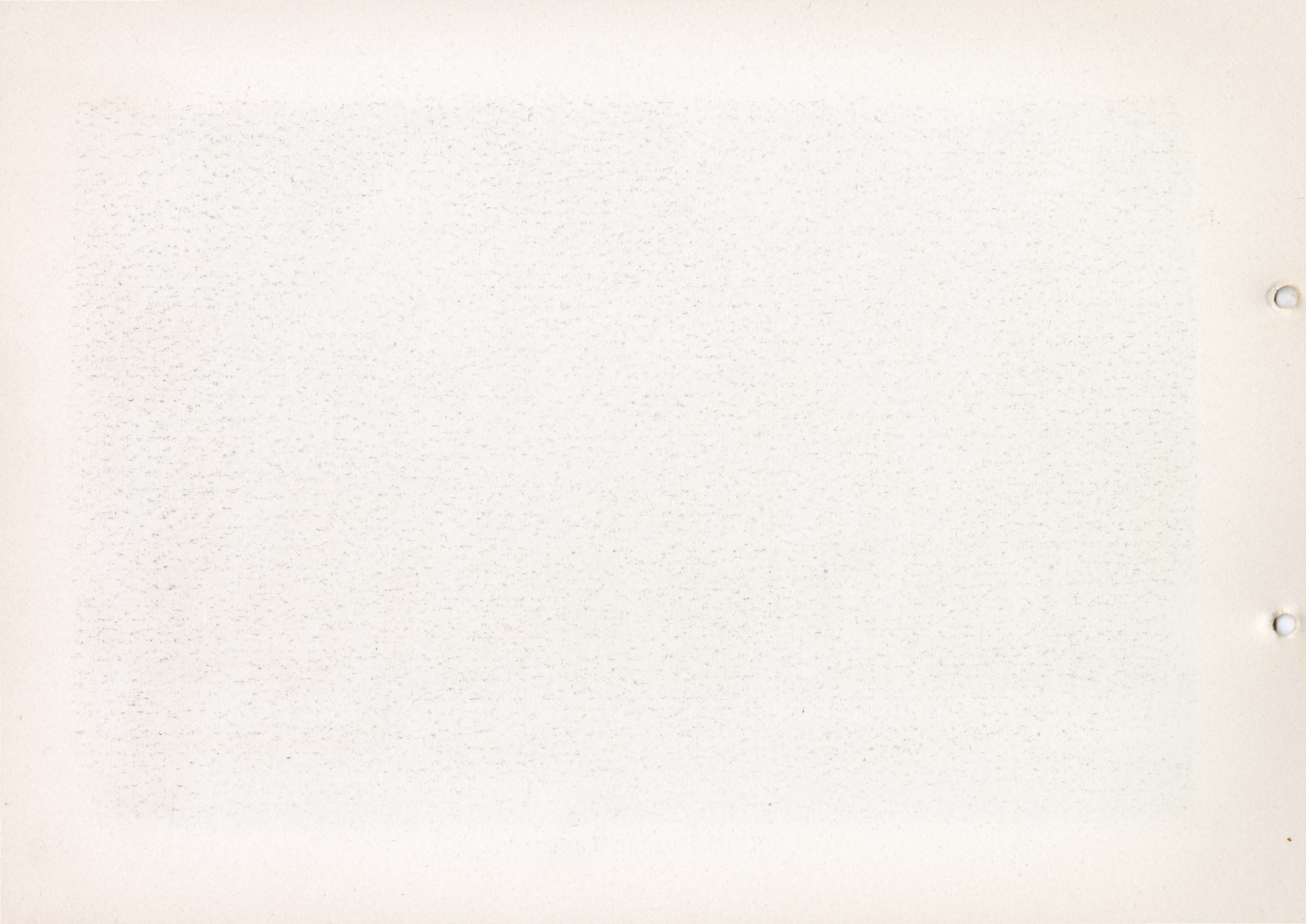


ESSEX INSTITUTE.





CADETS' ARMORY.





THE PUBLIC LIBRARY.



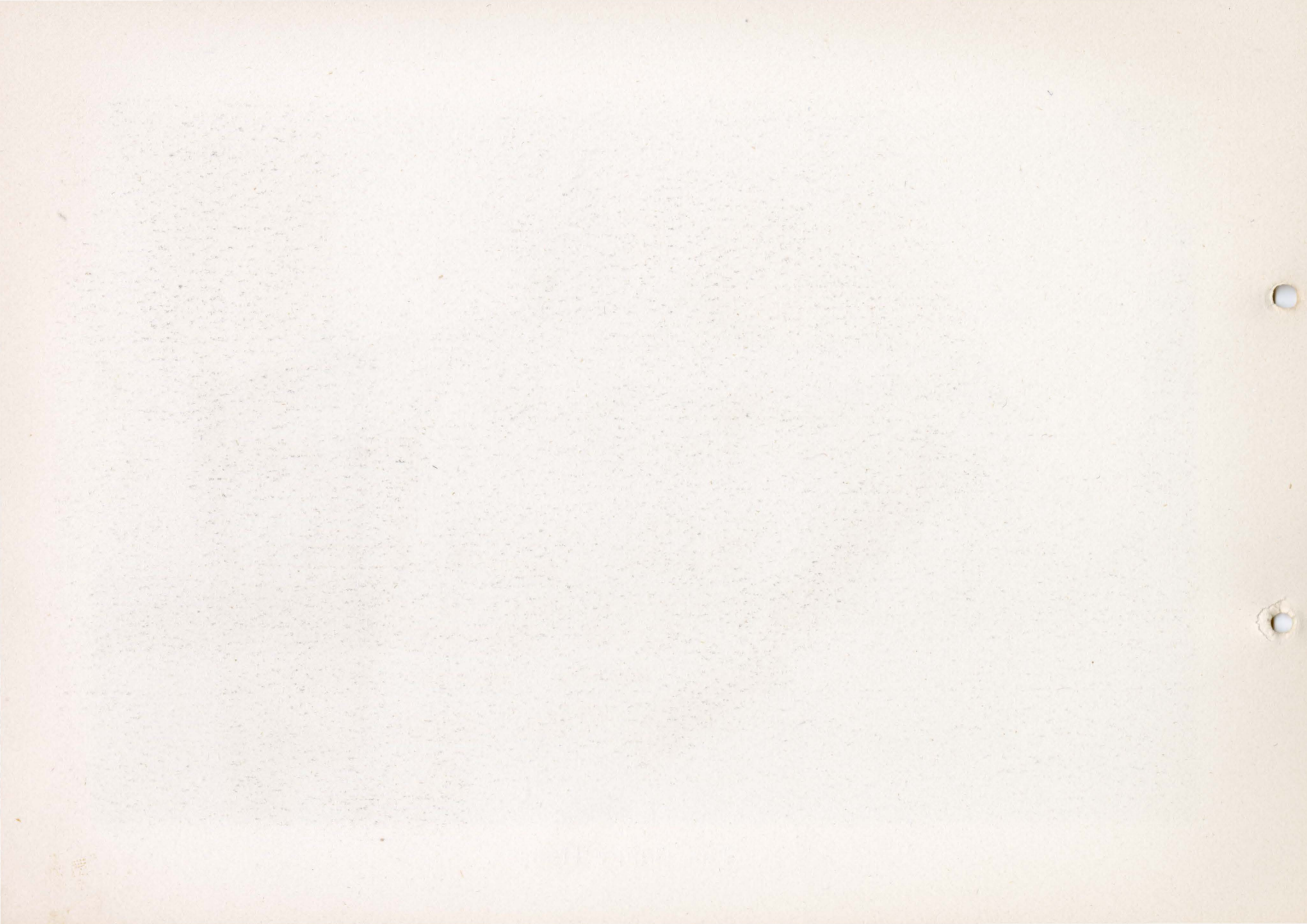


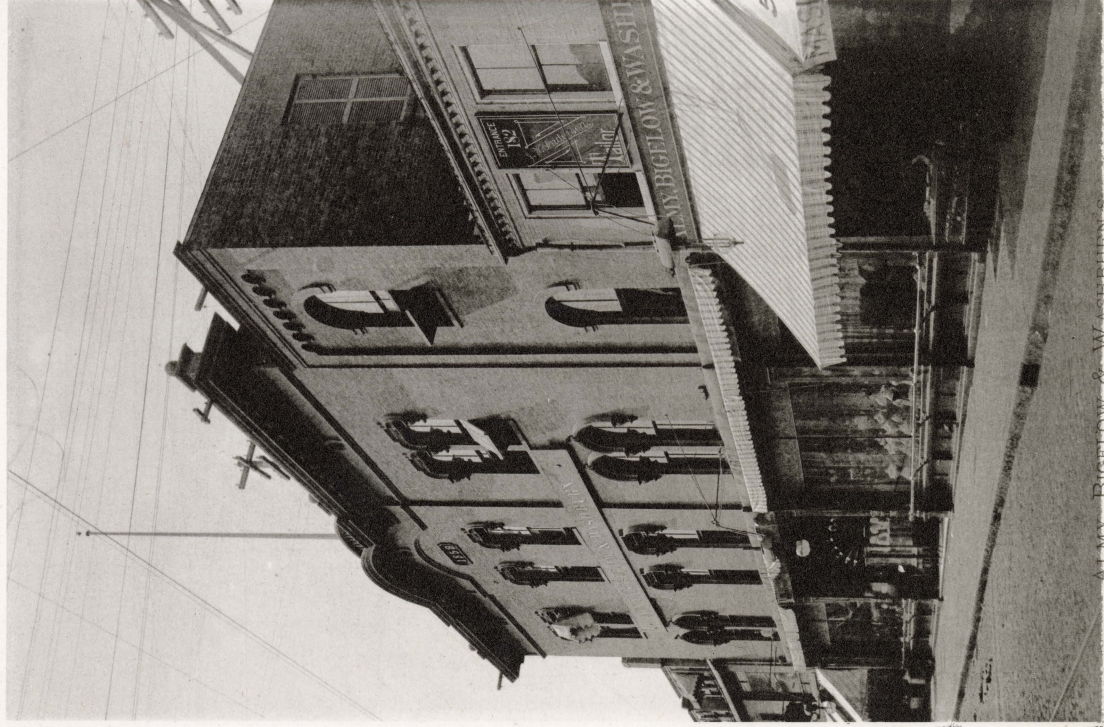
THE STATE NORMAL SCHOOL.





THE COURT HOUSES.





ALMY, BIGELOW & WASHBURN S.

