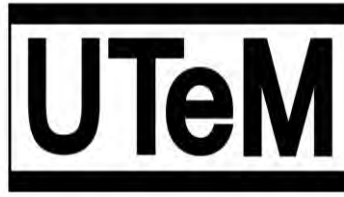


2.5 cm

UTeM'S LOGO
(14 point- coloured font)



UNIVERSITI TEKNIKAL MALAYSIA MELAKA

1.5 cm

4.0 cm

9.0 cm

1.5 cm

**APPLICATION OF DFA AND AHP IN DESIGN
EVALUATION PROCESS FOR ENVIRONMENTAL
PERFORMANCE IN THE CONCEPTUAL DESIGN STAGE
– A CASE STUDY**

3.0 cm

3 cm

2.5 cm

MUHAMMAD SYAHID BIN HASAN

3.0 cm

**MASTER OF MANUFACTURING ENGINEERING
(MANUFACTURING SYSTEM ENGINEERING)**

3.0 cm

2015

1.5 cm

2.5 cm

© Universiti Teknikal Malaysia Melaka

Font: (Arial narrow, Bold, 18 point gold colored font)



Font: (Arial Narrow, Bold, 18 point gold colored font)

“X” value = 1 cm



Faculty of Manufacturing Engineering

**APPLICATION OF DFA AND AHP IN DESIGN EVALUATION
PROCESS FOR ENVIRONMENTAL PERFORMANCE IN THE
CONCEPTUAL DESIGN STAGE – A CASE STUDY**

Muhammad Syahid bin Hasan

**Master of Manufacturing Engineering
(Manufacturing System Engineering)**

2015

**APPLICATION DFA AND AHP IN DESIGN EVALUATION PROCESS FOR
ENVIRONMENTAL PERFORMANCE IN THE CONCEPTUAL DESIGN STAGE
– A CASE STUDY**

MUHAMMAD SYAHID BIN HASAN

**A thesis submitted
in fulfillment of the requirements for the degree of Master of Manufacturing
Engineering (Manufacturing System Engineering)**

Faculty of Manufacturing Engineering

UNIVERSITI TEKNIKAL MALAYSIA MELAKA

2015

DECLARATION

I declare that this thesis entitled “Application of DFA and AHP in design evaluation process for environmental performance in the conceptual design stage – a case study” is the result of my own research except as cited in the references. The thesis has not been accepted for any degree and is not concurrently submitted in candidate of any other degree.

Signature :

Name :

Date :

APPROVAL

I hereby declare that I have read this dissertation/report and in my opinion this dissertation/report is sufficient in terms of scope and quality as a partial fulfillment of Master of Manufacturing Engineering (Manufacturing System Engineering).

Signature :

Supervisor Name :

Date :

DEDICATION

I dedicate my dissertation work to my beloved family. A special feeling of gratitude to my loving parents, Jamaliah bte Hj Saibot and Hasan bin Sirun, and my siblings, for their continuously support and endless loves that give me strength to complete this work.

ABSTRACT

This thesis basically discusses on the application of design for assembly (DFA) method and multi criteria decision making (MCDM) tool namely analytic hierarchy process (AHP). The main objective of this study is to apply both DFA and AHP in conceptual design stage to evaluate the environmental performance of a product. Conceptual design stage is a stage where no final decision has yet been made, therefore giving more flexibility to designer to focus on environmental aspect in their design. This study was conducted by using mechanical pencil design as case study. 5 conceptual designs were developed and 3 type analysis based on Lucas DFA method were done to evaluate the design functional efficiency, feeding ratio, and fitting ratio. 10 selection criteria for AHP were considered based on literature studies which are recyclable material, renewable material, number of parts, durability, modularity, ease of maintenance, ease of disassembly, functional efficiency, feeding ratio, and fitting ratio. Through the literature study, judgements through pairwise comparison were done to the selection criteria with respect to the goal. This is to select the optimum design that has the highest environmental performance. Functional efficiency has the highest priority vector as much as 33.4% while the least important criteria is shared by feeding ratio and fitting ratio with priority vector of 1.97%. At the final stage of AHP, each alternative were sorted based on their priority vector. Conceptual design 5 was ranked 1st with priority vector of 30.41%, followed by conceptual design 2 with priority vector of 21.2%. Conceptual design 4 and conceptual design 1 followed on 3rd and 4th in ranking with priority vector of 19.49% and 15% respectively. The least preferred alternative is conceptual design 3 with priority vector of 14.02%. Then, several sets of sensitivity analysis were carried out by using Expert Choice software to study whether any changes on the selection criteria's priority vector will affect the conceptual design ranking that were obtained on previous AHP analysis.

ABSTRAK

Tesis ini membincangkan penggunaan kaedah reka bentuk untuk pemasangan (*DFA*) dan *analytic hierarchy process* (*AHP*). Objektif utama kajian ini adalah untuk menggunakan *DFA* dan *AHP* dalam peringkat konsep reka bentuk untuk menilai prestasi alam sekitar sebuah produk. Peringkat konsep reka bentuk adalah peringkat di mana tiada lagi keputusan muktamad dibuat, oleh itu memberi lebih fleksibiliti kepada pereka untuk memberi tumpuan kepada aspek-aspek alam sekitar dalam reka bentuk mereka. Dalam kajian ini juga, reka bentuk pensil mekanikal telah digunakan untuk kajian kes. 5 konsep reka bentuk telah dihasilkan dan 3 jenis analisa telah dijalankan untuk menilai kecekapan fungsi, nisbah pengendalian, dan nisbah lekapan reka bentuk tersebut. Melalui pembelajaran literasi, 10 kriteria pemilihan telah digariskan iaitu bahan yang boleh dikitar semula, bahan yang boleh dihasilkan semula secara semula jadi, bilangan bahagian, ketahanan, modulariti, kemudahan penyelenggaraan, kemudahan pengasingan, kecekapan fungsi, nisbah pengendalian, dan nisbah lekapan. Melalui pembelajaran literasi juga, perbandingan antara kriteria pemilihan telah dijalankan dengan matlamat untuk memilih reka bentuk optimum yang mempunyai prestasi alam sekitar yang terbaik. Kriteria yang terpenting ialah kecekapan fungsi yang mempunyai kadar keutamaan sebanyak 33.4% dan kriteria yang paling kurang kadar kepentingan adalah nisbah pengendalian dan nisbah lekapan di mana kedua-dua kriteria tersebut mempunyai kadar kepentingan yang sama, iaitu sebanyak 19.7%. Di penghujung peringkat *AHP*, konsep reka bentuk 5 telah dipilih sebagai alternatif terpenting dengan kadar kepentingan sebanyak 30.41%, diikuti konsep reka bentuk 2 dengan kadar kepentingan sebanyak 21.2%. Kedudukan ketiga dan keempat diisi oleh konsep reka bentuk 4 dan konsep reka bentuk 1 dimana masing-masing mempunyai kadar kepentingan sebanyak 19.49% dan 15%. Alternatif di kedudukan terakhir ialah konsep reka bentuk 3 dengan kadar kepentingan 14.02%. Beberapa set analisis sensitiviti juga telah dijalankan dengan menggunakan perisian *Expert Choice* untuk mengkaji sama ada perubahan pada kadar kepentingan kriteria pemilihan akan memberi kesan kepada kedudukan reka bentuk konsep yang telah diperolehi pada analisa awal *AHP*.

ACKNOWLEDGEMENTS

Bismillahirrahmanirrahim. With the name of Allah the most Gracious and the most Merciful.

I would like to say a million thanks to my master project supervisor, Associate Professor Dr. Hambali bin Arep @ Ariff for his supervision and guidance that he gave through the completion process of my thesis.

My grateful thanks and appreciation also go to both of my parents, Jamaliah bte Hj Saibot and Hasan bin Sirun, and to my siblings for their endless supports, love, and motivation which has become one of my strength to overcome all the hardships and completed this thesis.

I also would like to thank to all lecturers and friends for their knowledge sharing, encouragement and helps. Also, to who are directly or indirectly involved in completing this thesis.

TABLE OF CONTENTS

	PAGE
DECLARATION	
APPROVAL	
DEDICATION	
ABSTRACT	i
ABSTRAK	ii
ACKNOWLEDGEMENTS	iii
TABLE OF CONTENTS	iv
LIST OF TABLES	vi
LIST OF FIGURES	viii
CHAPTER	
1. INTRODUCTION	1
1.1 Project Background	1
1.2 Problem Statement	2
1.3 Aim and Objectives	3
1.4 Scope and Limitations	3
1.5 Significance of Study	3
2. LITERATURE REVIEW	4
2.1 Design for Assembly (DFA)	4
2.2 Lucas Method	6
2.2.1 Functional Analysis	7
2.2.2 Feeding and Fitting Analysis	8
2.3 Analytic Hierarchy Process (AHP)	10
2.3.1 The functions of analytic hierarchy process	10
2.3.2 Operations in analytic hierarchy process	11
2.3.3 Integrated Analytic Hierarchy Process	13
2.4 Conceptual Design	15
2.5 Environmental Performance of product	16
3. METHODOLOGY	18
3.1 Steps for research process	18
3.1.1 Formulate research problem	19
3.1.2 Literature studies	19
3.1.3 Conceptual design with Lucas method	19
3.1.4 Design selection by using analytic hierarchy process	20
3.1.5 Result analysis and conclusion	24
4. IMPLEMENTATION OF DFA AND AHP	31
4.1 Formulate research problem	31
4.2 Conceptual design with Lucas DFA method	31
4.2.1 Initial design	32
4.2.2 Conceptual design 1	34
4.2.3 Conceptual design 2	36
4.2.4 Conceptual design 3	38
4.2.5 Conceptual design 4	40
4.2.6 Conceptual design 5	42

4.3	Design selection via AHP	44
4.3.1	Objective	44
4.3.2	Construct hierarchy structure for AHP	44
4.3.3	Develop pairwise comparison matrices and consistency identification	47
4.3.4	Construct alternative's rank	55
4.3.5	Design selection	57
5.	RESULTS AND DISCUSSION	58
5.1	Alternative pairwise comparison result with respect selection criteria	58
5.1.1	Alternative priority rank with respect to recyclable material criteria	59
5.1.2	Alternative priority rank with respect to renewable material criteria	60
5.1.4	Alternative priority rank with respect to durability criteria	61
5.1.5	Alternative priority rank with respect to modularity material criteria	61
5.1.6	Alternative priority rank with respect to ease of maintenance material criteria	62
5.1.7	Alternative priority rank with respect to ease of disassembly criteria	62
5.1.8	Alternative priority rank with respect to functional efficiency criteria	63
5.1.9	Alternative priority rank with respect to feeding ratio criteria	64
5.1.10	Alternative priority rank with respect to fitting ratio criteria	64
5.2	Sensitivity analysis via Expert Choice 11.5	65
5.2.1	Increase and decrease recyclable material criteria's priority vector by 10%	66
5.2.2	Increase renewable material criteria's priority vector by 25%	68
5.2.3	Increase number of parts criteria's priority vector by 10%	68
5.2.4	Increase durability criteria's priority vector by 10%	69
5.2.5	Increase modularity criteria's priority vector by 10%	70
5.2.6	Increase ease of maintenance criteria's priority vector by 10%	70
5.2.7	Increase ease of disassembly criteria's priority vector by 10%	71
5.2.8	Increase and decrease function efficiency criteria's priority vector by 10%	72
5.2.9	Increase feeding and fitting ratio criteria's priority vector by 10%	73
5.3	Sensitivity analysis summary	75
6.	CONCLUSION AND RECOMMENDATIONS	76
6.1	Conclusion	76
6.2	Recommendations	78
	REFERENCES	79
	APPENDIX	84
	A: Gantt chart and milestone	84
	B: Conceptual design assembly sequence flowchart	85
	C: AHP via Expert Choice 11.5 software	90
	D: Initial design vs. Conceptual design 5	102

LIST OF TABLES

TABLE	TITLE	PAGE
2.1	Lucas DFA method – Manual Handling Analysis	8
2.2	Lucas DFA method – Manual Fitting Analysis	9
2.3	Steps involved in Analytic Hierarchy Process	13
2.4	Summary of approaches used in manufacturing	14
3.1	Pairwise matrix for criteria comparison	21
3.2	Pairwise matrix for alternatives over criteria	22
3.3	Fundamental scale in AHP	22
3.4	Random consistency index	23
4.1	Lucas DFA method analysis on initial design	32
4.2	Lucas DFA method analysis on conceptual design 1	34
4.3	Lucas DFA method analysis on conceptual design 2	36
4.4	Lucas DFA method analysis on conceptual design 3	38
4.5	Lucas DFA method analysis on conceptual design 4	40
4.6	Lucas DFA method analysis on conceptual design 5	42
4.7	Pairwise comparison scoring table for selection criteria with respect to the goal	48
4.8	Normalized matrix for criteria pairwise comparison	49
4.9	Consistency check	50
4.10	Consistency vector identification	51
4.11	Summary for alternative's pairwise comparison with respect to all selection criteria	53
4.12	Overall priority vector for selection criteria and each alternative with respect to each selection criteria	56
4.13	Comparison between initial design and conceptual design 5	57
5.1	Comparison between conceptual designs	58

5.2	Conceptual design rank with respect to recyclable criteria	59
5.3	Conceptual design rank with respect to renewable criteria	60
5.4	Conceptual design rank with respect to number of parts criteria	60
5.5	Conceptual design rank with respect to durability criteria	61
5.6	Conceptual design rank with respect to modularity criteria	62
5.7	Conceptual design rank with respect to ease of maintenance criteria	62
5.8	Conceptual design rank with respect to ease of disassembly criteria	63
5.9	Conceptual design rank with respect to functional efficiency criteria	63
5.1	Conceptual design rank with respect to feeding ratio criteria	64
5.11	Conceptual design rank with respect to fitting ratio criteria	64
5.12	Microsoft Excel and Expert Choice result comparison	65
5.13	Sensitivity analysis summary on alternative ranking	75

LIST OF FIGURES

FIGURE	TITLE	PAGE
2.1	Product Design Features for Ease in Assembly Process	5
2.2	Example of Lucas DFA assembly sequence diagram	7
2.3	Assembly sequence flowchart	7
2.4	Analytic Hierarchy Process flowchart	12
2.5	Design activity model	15
2.6	LiDS wheel	17
3.1	Research process	18
3.2	Process flow for AHP	20
3.3	Hierarchical structure model for AHP	21
3.4	Step for sensitivity analysis via Expert Choice	24
3.5	Expert Choice 11.5 welcome dialogue window	25
3.6	Expert Choice 11.5 Goal description window	25
3.7	Objectives and Tree view icon in Expert Choice 11.5	26
3.8	Alternative insertion in Expert Choice 11.5	26
3.9	Pairwise numerical comparison	27
3.10	Pairwise verbal comparison	27
3.11	Pairwise graphical comparison	28
3.12	Priorities calculation and sortation in Expert Choice 11.5	28
3.13	Result synthesise in Expert Choice 11.5	29
3.14	Sensitivity analysis by Expert Choice 11.5	29
4.1	Initial design of a mechanical pencil	33
4.2	Conceptual design 1	35
4.3	Conceptual design 2	37
4.4	Conceptual design 3	39
4.5	Conceptual design 4	41

4.6	Conceptual design 5	43
4.7	Hierarchical structure for AHP	46
4.8	Sum vector calculation process	50
5.1	Performance sensitivity graph for alternatives	65
5.2	Priority vector for recyclable material increased by 10%	67
5.3	Priority vector for recyclable material decreased by 10%	67
5.4	Priority vector for renewable material increased by 25%	68
5.5	Priority vector for number of parts increased by 10%	69
5.6	Priority vector for durability increased by 10%	69
5.7	Priority vector for modularity increased by 10%	70
5.8	Priority vector for ease of maintenance increased by 10%	71
5.9	Priority vector for ease of disassembly increased by 10%	71
5.10	Priority vector for functional efficiency increased by 10%	72
5.11	Priority vector for functional efficiency decreased by 10%	73
5.12	Priority vector for feeding ratio increased by 10%	74
5.13	Priority vector for fitting ratio increased by 10%	74

CHAPTER 1

INTRODUCTION

This chapter includes the project background, problem statement, the aim and objectives, scope and limitations, and the significance of study.

1.1 Project Background

Nowadays, people started to concern more about protecting the environment. The fact that we only have one earth make people realize how important for us to work together to reduce any negative impacts towards environment in every aspects in our life. Mahatma Gandhi once said “Earth provides enough to satisfy every man’s needs, but not every man’s greed” (Nayyar, 1958), which means we already have enough for what we need, not what we want. Any action or decision that only made based on our greediness will let to the damaging of our earth.

The environmental factors or requirement can be taken into count as early as at the conceptual design stage. One of approaches that can be introduced during this stage is DFA (design for assembly). By implementing Lucas DFA method during the conceptual design stage, numbers of conceptual design can be developed based on three analysis which is through functional, feeding, and fitting analysis which designer can evaluate the design’s ease of assembly. With application of AHP (analytic hierarchy process), the most beneficial design can be selected based on environmental requirements. The implementation of AHP

will help designer to sort the alternatives based on priority rank with respect to the goal, which in this study, to select the optimum conceptual design which have the highest environmental performance.

1.2 Problem Statement

With the raising trend for sustainable product demand, people have started to take environmental requirement into count when designing a product. Product designer needs to focus more on the designing process as he or she needs to put the environmental requirement in the process at the early stage of design process. Conceptual design stage, which is the early stage in the designing process, is the most suitable platform to perform the environmental requirement into the design stage. . In conceptual design stage, product designer can apply the design for assembly method such as Lucas DFA method in their design process in order to develop number of designs that are easy to be assemble during the manufacturing stage. To determine which design that have the highest performance in terms of environmental aspect, a multi criteria decision making (MCDM) tool namely analytic hierarchy process (AHP) can be applied. With respect to the goal which is to select the optimum conceptual design that have the highest environmental performance, the selection criteria for the AHP should be based on environmental aspect such as types of material used, number of parts, percentage of recyclable material used, and many more. Therefore, DFA and AHP can be performed together during the conceptual design stage to evaluate the environmental performance of the developed designs and also to select the optimum design that have the highest environmental performance.

1.3 Aim and Objectives

The aim of this study is to apply the design for assembly (DFA) and analytic hierarchy process (AHP) approach during the conceptual design stage in evaluating the environmental performance of a product.

The objectives of the project are:

- i. To apply the design for assembly (DFA) approach and analytic hierarchy process (AHP).
- ii. To identify the selection criterion based on environment requirements.
- iii. To perform sensitivity analysis to verify the results.

1.4 Scope and Limitations

The study was carried out within the following limits:

- i. Mechanical pencil design was used to conduct the case study.
- ii. Focus on conceptual design stage.
- iii. DFA based on Lucas Method.
- iv. Environmental factors in AHP.
- v. Software such as AutoCAD and Expert Choice 11.5 were used during the study.

1.5 Significance of Study

The study can benefit product designer as one of selection process or tools for selecting the optimum conceptual design by the application of design for assembly (DFA) and analytic hierarchy process (AHP) in terms of environmental requirement or performance.

CHAPTER 2

LITERATURE REVIEW

This chapter focused on issues related with the project. The focus will be on the application of design for assembly with analytic hierarchy process during the conceptual design in evaluating the environmental requirements on the product's early design stage.

2.1 Design for Assembly (DFA)

Design for assembly, as defined by Boothroyd & Alting (1992) is an approach used in order to design a product or part that make the assembly process easier to be executed. The importance of designing stage is such that the final cost of a product is highly contributed by its design stage. Therefore, the objective of DFA is to make the assembly process become easier and also to reduce the total parts cost. Apart from that, DFA aims are not only to reduce parts complexity and reduction in total part cost, but also reduction in time taken for assembly to be completed (Todić et al., 2012) and also to reduce the non-value added operations (Leaney & Wittenberg, 1992). Furthermore, Boothroyd & Alting (1992) has highlighted that the ease in assembly process are not depends on the product itself and its features, instead the ease in assembly process are based on the feeding or handling and the assembly process. Leaney & Wittenberg (1992) has highlighted few guidelines in order to achieve the DFA's goals. The guidelines are to reduce number of parts, product modularization, adjustment elimination, ease of feeding/handling design, able to self-aligned

part design, appropriate fastening, handling and orientation minimization, gravity utilization, and part-symmetrical maximization.

The research of consideration for ease in assembly process actually have been done many years before and one of the example is back on year 1985, where Adachi et al. (1985) are working to develop a method to make the assembly process at the printed circuit board (PCB) easier (Boothroyd & Alting, 1992). The considerations or concerns that they put into the method's development are to complete the assembly process in simple steps and minimization of the parts and subassemblies' variety. In additional, Adachi et al. (1985) has presented a chart, filled with product design features which lead to easier assembly process as shown in Figure 2.1.

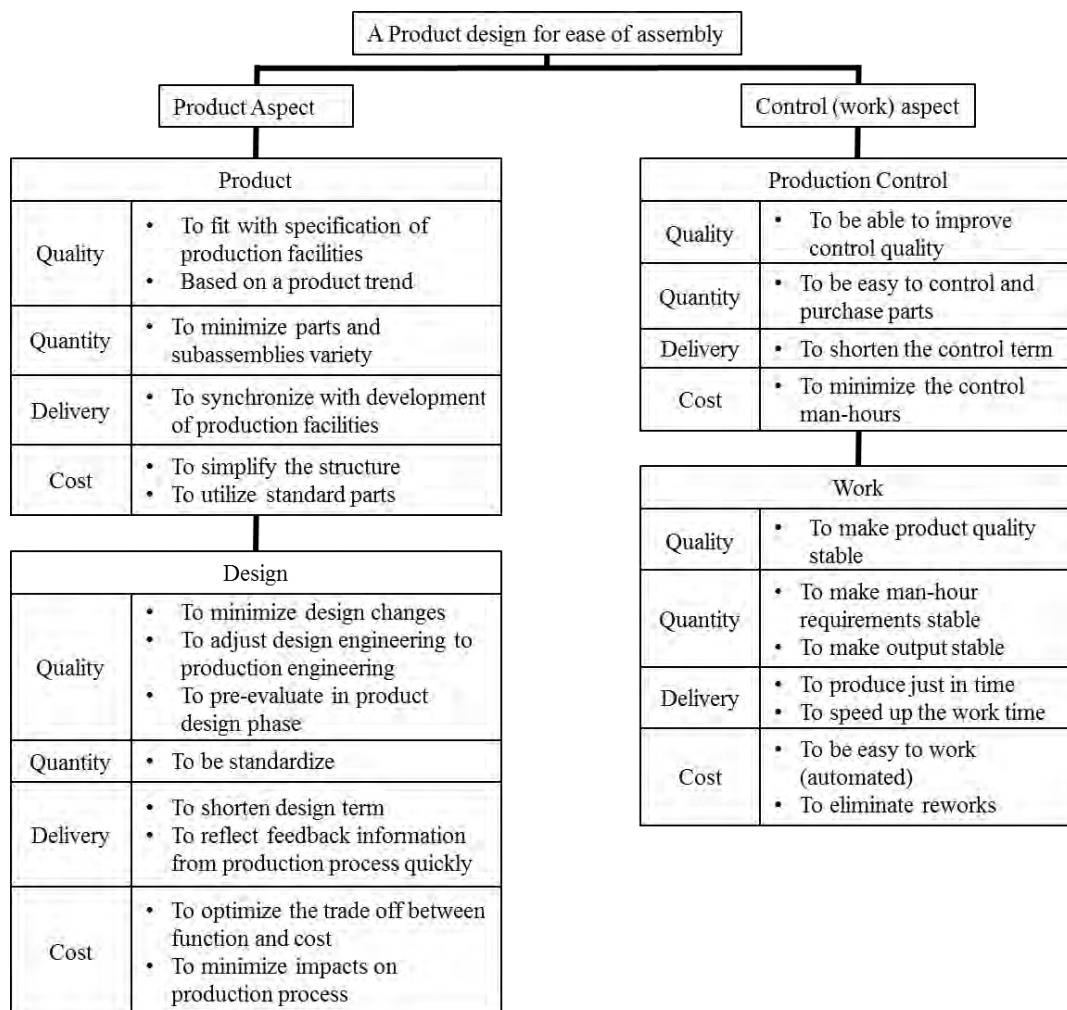


Figure 2.1: Product Design Features for Ease in Assembly Process (Adachi et al., 1985)

2.2 Lucas Method

Chan & Salustri (2003), stated that Lucas DFA method was developed by the Lucas Corp. in the 1980s. Lucas method was developed based on the level of difficulties in the assembly process, a point scale. Lucas method is based on three separate and sequential analysis which are the functional analysis, feeding analysis, and fitting analysis (Chan & Salustri, 2003), and it helps the designer to reduce the number of components and also can identify assembly issues (Barnes et al., 1997). These three analysis are actually a part of assembly sequence flowchart (ASF). This assembly sequence flowchart can be represented as follows:

1. Specification
2. Design
3. Functional analysis (1st Lucas analysis)

If problem are identified, return to step 2

4. Feeding analysis (2nd Lucas analysis)
5. Fitting analysis (3rd Lucas analysis)
6. Assessment

If problems are identified by the analysis, return to step 2.

Barnes et al. (1997) has put an example for Lucas DFA methodology on assembly sequences which is depicted in Figure 2.2. The diagram shows the starting point for assembly process and the appropriate sequence and whether all undertaking shown are effective. Each of the boxes shown in Figure 2.2 also indicates the requiring substantial effort to complete each process. Another assembly sequence flowchart also can be represented as Figure 2.3.

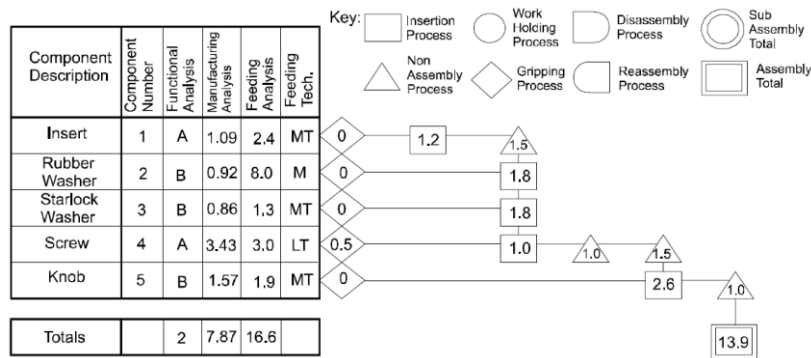


Figure 2.2: Example of Lucas DFA assembly sequence diagram (Barnes et al. 1997)

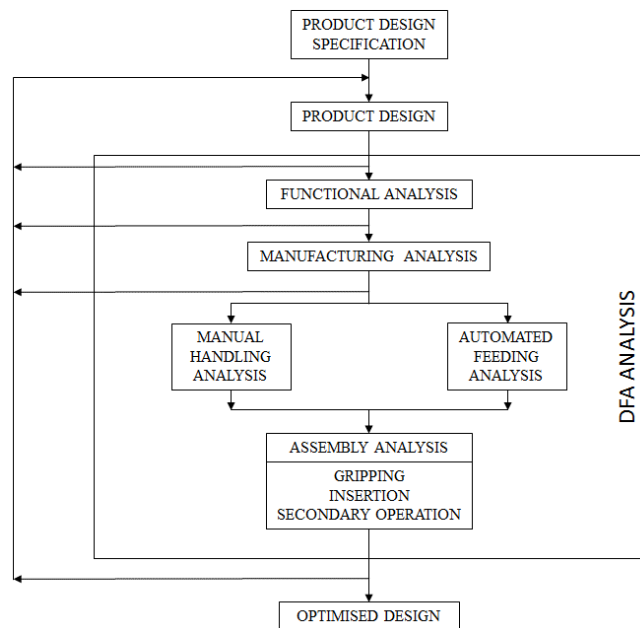


Figure2.3: Assembly sequence flowchart (Anonymous, 2015)

2.2.1 Functional Analysis

Chan & Salustri (2003) stated that in functional analysis, product's components are being monitored only for their functional purpose. The components then will be group into two group, one group which are very essential to the product's function, and another group that have less or not essential to the product's function. Let the first group named as "A" and the second as "B". Chan & Salustri (2003) in their writing has concluded the calculation for the functional efficiency. Equation 2.1 shows how to calculate the functional efficiency.

$$Functional\ efficiency = \left(\frac{A}{A + B} \right) \times 100\% \quad (2.1)$$

Functional analysis is carried out in order to reduce the number of parts in a product. Chan & Salustri (2003) added that a typical design efficiency for initial design will be 60%.

2.2.2 Feeding and Fitting Analysis

In feeding analysis, the analysis of part handling and insertion times are being done in this stage. The result of feeding analysis is the feeding ratio, which is the ratio of total feeding index over number of essential components and it shows on equation 2.2. An ideal feeding ratio is 2.5. (Chan & Salustri, 2003; Leaney & Wittenberg, 1992).

$$\text{Feeding Ratio} = \frac{\text{Total Feeding Index}}{\text{Number of essential components}} \quad (2.2)$$

The total feeding index can be calculated by referring to Table 2.1. The term “feeding” and “handling” have same meaning, where “feeding” is use for component that being handled by machine or equipment, and “handling” term refers to the manual handling mechanism (Leaney & Wittenberg, 1992).

Table 2.1: Lucas DFA method – Manual Handling Analysis (Chan & Salustri, 2003)

Handling Index = A+B+C+D			
A. Size and Weight of Part One of the following		B. Handling difficulties All that apply	
Very small – requires tools	1.5	Delicate	0.4
		Flexible	0.6
Convenient – hands only	1.0	Sticky	0.5
		Tangible	0.8
Large and/or heavy requires more than 1 hand	1.5	Severely nest	0.7
		Sharp/Abrasive	0.3
Large and/or heavy requires hoist or 2 people	3.0	Untouchable	0.5
		Gripping problem /Slippery	0.2
		No Handling Difficulties	0
C. Orientation of Part One of the following		D. Rotational Orientation of Part One of the following	
Symmetrical, no orientation required	0.0	Rotational Symmetry	0.0
End to end, easy to see	0.1	Rotational Orientation, easy to see	0.2
End to end, not visible	0.5	Rotational Orientation, hard to see	0.4