



ISBS2019

ISBS 2019 Conference Sponsor Advertisements

Gold Sponsors (booth #)

1. BTS Bioengineering
2. Ectoscan 3D
3. Kistler
4. Qualisys
5. Noraxon
6. Xsens
7. C-Motion
8. AMTI

Silver Sponsors (booth #)

9. Delsys
10. Bertec
11. Motion Analysis
12. Vald Performance
13. Vicon

Other Sponsors

The Motion Monitor
OptiTrack

1



BTS Bioengineering

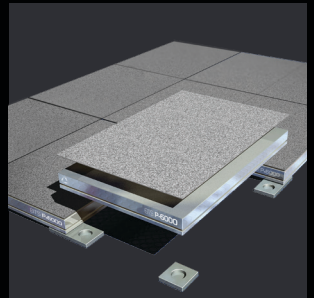
Is your goal to improve the performance,
reduce the risk of injury or proper rehabilitate?

Then BTS is your right partner !

Find out more about our integrated solutions
for athletic assessment.



3D MOCAP CAMERA
SMART-DX 7000



FORCE PLATES
INFINI-T



Surface EMG
FREEMG 1000



Video Recording
VIXTA

WWW.BTSBIOENGINEERING.COM
SALES@BTSBIOENGINEERING.COM

BTS BIOENGINEERING CORP.
67 FEDERAL AVENUE
QUINCY MA 02169 USA
INFO: +1 (347) 962.4338

WWW.BTSBIOENGINEERING.COM



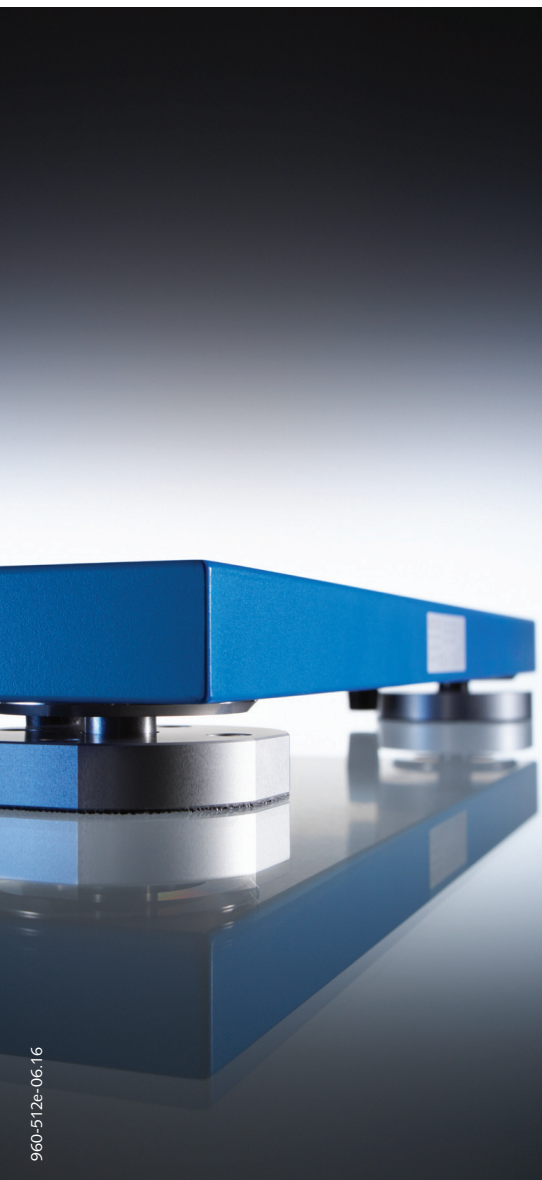
SEE THE COMPLETE PICTURE

Objective measurement of the efficacy of therapeutic interventions is here — EctoScan3D.

Through revolutionary, non-contact optical scanning technology that combines multispectral photometric and 3D mapping technology, EctoScan3D provides objective data to document and aid sports therapy.

Visit E3D at ISBS in booth #2 or go to ectoscan3d.com to learn more.

ECTOSCAN3D
THE COMPLETE PICTURE



960-512e-06.16



**Make objective
decisions on
return to play**

Kistler Delivers Unique Solutions for Dynamic Force Measurement with Maximum Precision

How to understand human movement? How to improve performance? Coaches, physiotherapists and kinesiologists seek the answers to these questions. We can help to find them.

Kistler force measurement systems capture highly dynamic forces with maximum precision and provide key performance indicators. This is the basis to understanding and improving.

With over 50 years of experience, you can rely on our excellence in technology. Our experts are at your service worldwide.

www.kistler.com/biomechanics

<https://commons.nmu.edu/isbs/vol37/iss1/2>

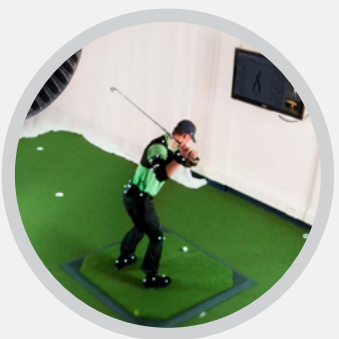
KISTLER

measure. analyze. innovate.

Streamlined tools for Sports Performance

QUALISYS SPORTS MODULES allow you to go from data capture to finished report in a matter of minutes. In addition to our globally recognized Running Performance module, the Cycling, Golf, and Baseball modules have all graduated to interactive web reports.

Visit **QUALISYS BOOTH 4** to learn more!



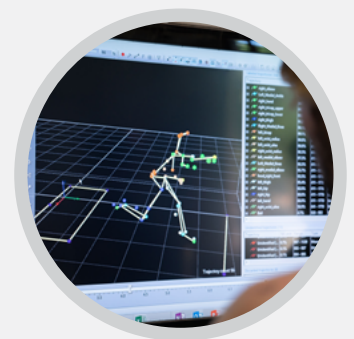
GOLF

A single click generates a web report including relevant parameters such as stance metrics, swing plane, and kinematic sequence.



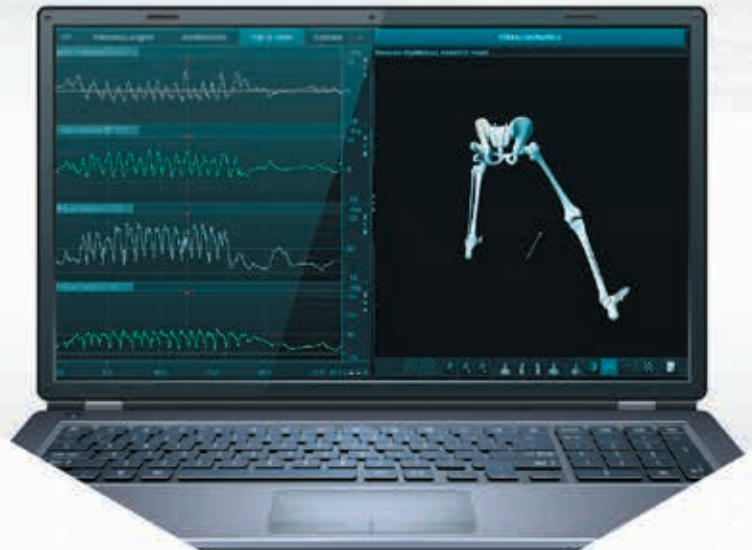
CYCLING

A biomechanical assessment of the cyclist is provided instantly, as well as detailed data on how the rider and bike move as a unit.



BASEBALL

Track and analyze every detail of the pitch. The output not only includes performance indicators, but also identifies injury risks.



PORTABLE Motion Capture

Now available with
the Calibration Adjustment Tool

3D Kinematic Data Collection

- 3D orientation & position*
- High sampling rate (200 Hz)*
- Single joint measurements*
- Ability to include object sensors*
- Freely assignable sensors*
- "Lossless" on-board data recovery*



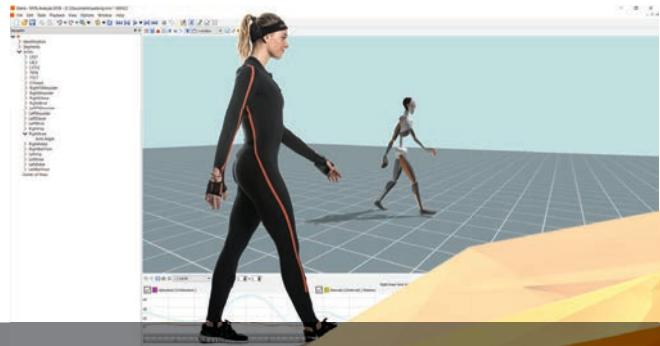
EMG

3D MOTION

SOFTWARE

PRESSURE/FORCE

VIDEO ANALYSIS



Xsens MVN Analyze is the number one choice for measuring 3d kinematics in sports everywhere, under any circumstance. The miniature motion trackers developed by Xsens are able to capture from the slightest twitches to high dynamic sports motions. Xsens' proven biomechanical model and sensor fusion algorithms ensure the highest quality motion analysis, even in challenging environments.

Special Sports Biomechanics Features

- High update rate for dynamic sports
- Portable system for use on the sports field
- Real-time 3D character visualization
- Real-time 3D kinematic graphs
- Set up time under 10 minutes.
- 5 second calibration
- Superior algorithms ensure measurements in any condition, including magnetic disturbances

Sports Bundle includes

- MVN Analyze Link
- MVN Analyze Lifetime License
- 3 Years Software Updates and Support
- Hardware Back up Kit
- Advanced Tutorial Video Library
- Different sizes of lycra suits

Specifications

- | | |
|--------------------------|----------------------------|
| • Internal update rate | 1000 Hz |
| • Update rate | 240 Hz |
| • Latency | 20 ms |
| • Battery Life | 10 Hours |
| • Wireless communication | Up to 150 m |
| • Communication | WiFi 2.4 and 5 GHz |
| • Export formats | ASCII (XML), C3D, BVH, FBX |

Integration

- Facilitates data analysis in Visual 3D
- Easy sync with 3rd party devices
- Data streamed or imported to different data analysis software



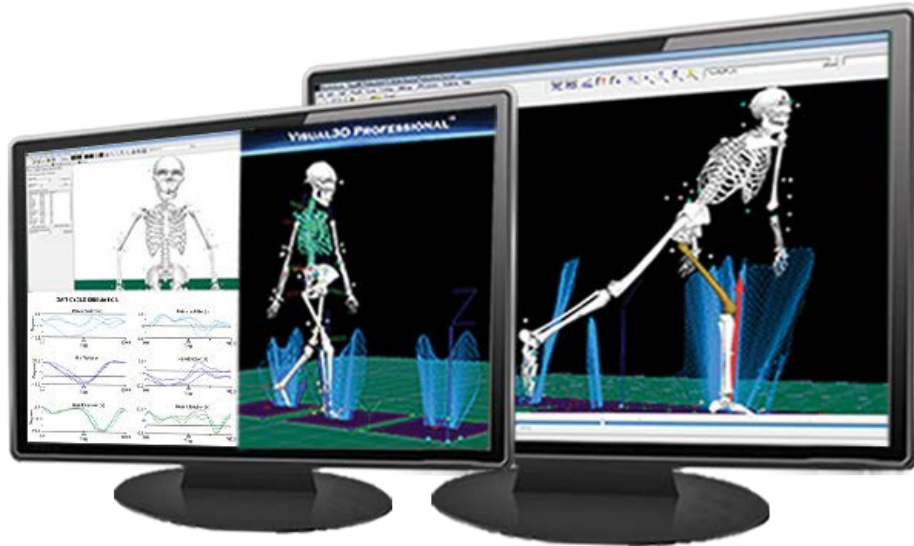
Xsens

phone +31 88 97367 00
 general e-mail info@xsens.com
 sales e-mail sales@xsens.com

Xsens North America Inc.

phone 310-481-1800
 general e-mail info@xsens.com
 sales e-mail sales@xsens.com

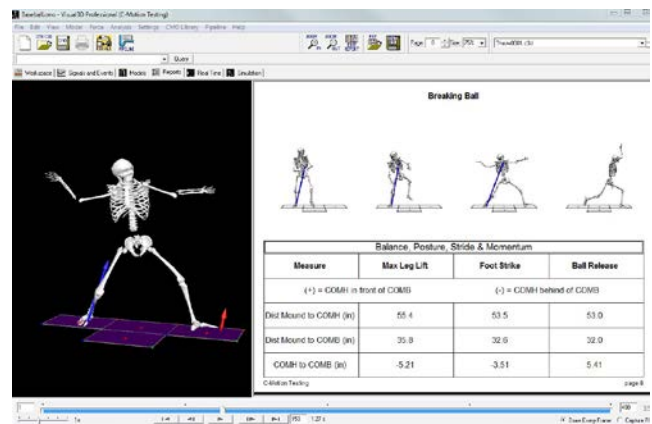
Research Software for 3D Biomechanics Analysis and Modeling



Visual3D™ Key Features

- Instrumented Treadmill Support
- Multiple Force Platform Support
- Flexible Modeling - Global Optimization, 6 DOF, Conventional Gait, Virtual Markers, and more.
- Inverse Kinematic Chains to Constrain Joints.
- Advanced Biomechanics Calculations for: 3D Kinematics, 3D Kinetics, & EMG.
- Customize Structures for Force Sensors, Force Platforms, Instrumented Stairs and more.
- Comprehensive Reporting and Graphing.
- Export to OpenSim.
- Comprehensive Data Management.
- Enables and Supports Complex Analyses.
- Real-Time Streaming.
- Keeps a History of all Processing Steps on the Data.
- 3D Digitizing Pointer Support.
- Functional Joint Center Calculations.
- Extensive Pipeline Scripting for Automation.
- Real-Time Biofeedback, RT Analysis, RT Pipeline.
- Induced Acceleration Analysis.
- Compressed and Indexed Output Files.

*For Real-Time features hardware must support Real-Time data streaming



Hardware Independent Research Software

Visual3D processes standard C3D files, ASCII, and custom inputs. Analog data (force plates, EMG, Instrumented Treadmills) can be integrated and processed with the motion capture data.

Supported Motion Capture Systems

Qualisys
Northern Digital
Vicon
NaturalPoint Optitrack

Phoenix Technologies
Motion Analysis Corp
PhaseSpace
Xsens
and more...

8

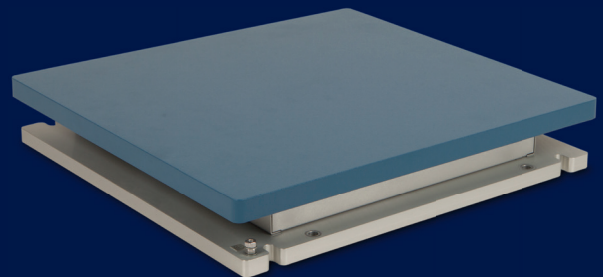


**HE THINKS
ACCURACY
MATTERS
...we do too**

OPTIMA
Human Performance System

**The only force plate to
conform to ASTM F3109-16**

AMTI Optima HPS and Optima BMS series platforms are raising the bar for force platform performance. Our patented technology meets the new ASTM F3109-16 standard for accuracy across the entire platform's working surface and sets an unprecedented technological standard for gait and biomechanical force measurements systems.



**Up to 100x more accurate
over the entire working surface**

www.amti.biz/optima.aspx

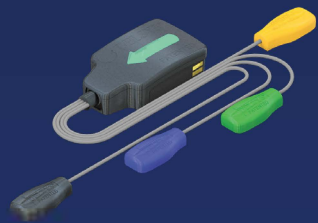
176 Waltham Street, Watertown, MA 02472-4800 | P: 617-926-6700 | www.amti.biz

AMTI
FORCE AND MOTION



9

Fully Wireless HDsEMG Delsys Technology



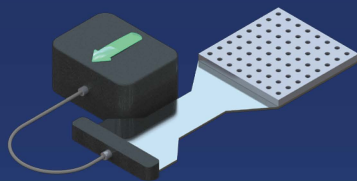
TRIGNO™ QUATTRO
Build your own EMG grid
with advanced 4-ch
EMG + IMU biofeedback



TRIGNO™ GALILEO
Automatically measure
motor unit shapes and
firing behavior



TRIGNO™ MAIZE
First wireless EMG grid
for muscle mapping and
decomposition



TIBER™
New generation wireless
64-ch HDsEMG grid
designed for mobility



MIAMI UNIVERSITY

COLLEGE OF EDUCATION,
HEALTH & SOCIETY

*Department of Kinesiology
and Health*



Bertec's products have represented a legacy of excellence in biomechanics for over thirty years. We provide solutions founded in accuracy and precision. Our engineering is trusted worldwide to enable a deeper understanding of human movement.

———— **Stop by our booth to learn about our products!** ————



Force Plate

Designed for gait, balance, and performance analysis, Bertec force plates are dependable and deliver highly accurate and reliable data.

Instrumented Stairs

Three of the four levels of stairs are instrumented with our patented strain gauge technology which allow the measurement of ground reaction force and moment as well as Center of Pressure (CoP).

Instrumented Treadmill

The unique design features result in superior dynamic characteristics and a high natural frequency making it the best research-grade fully instrumented treadmill.

Immersive Labs

Bertec Immersive Labs integrates an instrumented treadmill, 3D motion capture system, Motion Monitor software and an immersive environment with controlled visual and auditory feedback, making this one of the most advanced systems for locomotion and balance research.



MOTION ANALYSIS

www.motionanalysis.com

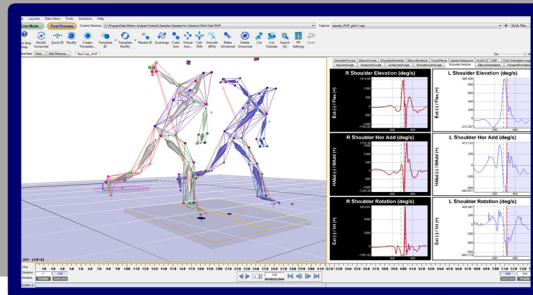
f @motionanalysiscorp
i @motionanalysis
t @motionanalysis
#MotionAnalysis

Cortex improves productivity by integrating every step of the motion capture process;

- Setup
- Calibration
- Real-time tracking
- Template identification
- Calculations
- Data streaming
- Post processing
- Report generation

...all in a single program. Cortex is the cost efficient solution to capture, measure and output data.

Easily and efficiently creates reports: Select trials to calculate, enter subject information, verify the events and Cortex does the rest.



A powerful tool kit that enables users to easily build custom markersets, modeling, scripting, real-time feedback and data visualization in 3D.

Motion Analysis has a comprehensive line of motion capture cameras



12

Instantaneous neuromuscular feedback for dynamic and isometric tests.

ForceDecks Dual Force Plate System provides instantaneous feedback with unique auto-detection and one-click analysis for complete data collection and processing in under a minute.

This instantaneous capture and analysis allows for quick testing, immediate feedback and accelerated decision-making on large numbers of athletes or patients, whether in a lab or out in the field.

ForceDecks software is also compatible with Bertec, Kistler and AMTI plates.

FORCEDECKS
DUAL FORCE PLATE SYSTEM

VISIT US AT
BOOTH #12
VALDPERFORMANCE.COM

VALD
PERFORMANCE

CLINICALLY VALIDATED MOTION CAPTURE, PRECISELY DESIGNED FOR LIFE SCIENCES AT EVERY LEVEL

When paired with Vicon's highly precise optical and video cameras within the Nexus platform, Vicon's inertial sensors provide everything users need to conduct data-driven studies of athletes, whether they work in biomechanics, sports or academia.

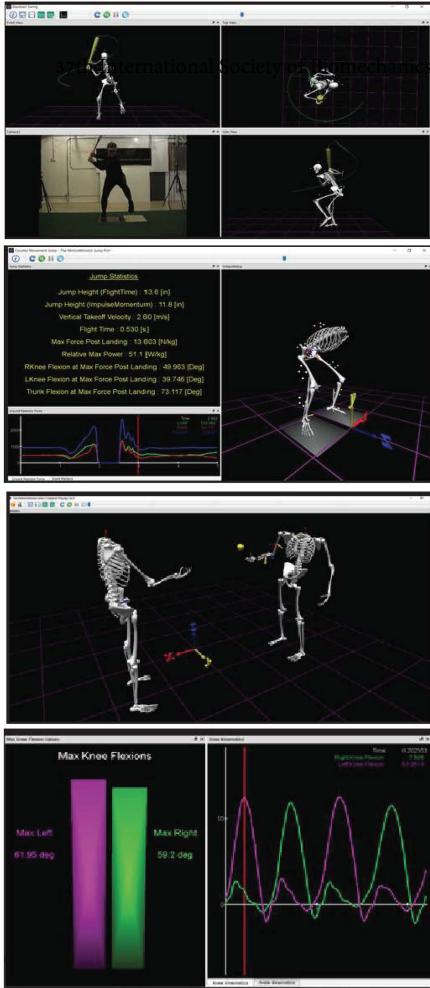
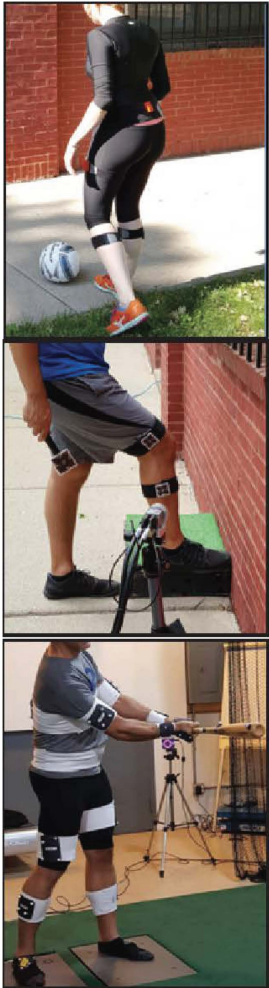
13

VICON / LIFE SCIENCES

I Measure U

Visit us at **Booth #13**

www.vicon.com



THE MOTIONMONITOR™

The total solution in motion capture.

Use the optimal technology for tracking the athlete, with sport-specific analysis and visualizations. Immediately visualize biomechanical motion and data, with the ability to provide user-defined real-time biofeedback.

www.TheMotionMonitor.com

