

On a new Genus and six new Species of Ciid-Beetles from Japan (Ciidae, Coleoptera)

By

TAKEHIKO NAKANE* and AKIRA NOBUCHI**

Saikyo University

Cis (*s. str.*) *schizophylli* sp. nov. (Fig. 1)

Subcylindrical, parallel-sided; blackish brown, with mouth-parts (except mandibles), antennae and legs paler; head, front border, antescutellar part and lateral margins of pronotum, scutellum, and humeral and apical parts of each elytron vaguely brown or reddish, but their patterns variable, and young material paler in colour. Body above with close clothing of yellowish white, short scale-like setae; mouth-parts, antennae, body beneath and legs pubescent shortly.

Head with vertex convex, closely punctured, finely shagreened; in male frons with an impression at middle; front margin of clypeus nearly straight in middle and rounded on each side, and narrowly edged on each side together with each angle of frons. Antennae 10-segmented, 1st and 2nd segments stout, 3rd to 7th subequal in width, distal three widened and loosely jointed to each other; ratio of antennal segments in length as follows: 6.1 : 5.0 : 6.7 : 4.2 : 2.9 : 2.8 : 2.1 : 4.7 : 5.0 : 8.2 (46 units=0.5mm.). Pronotum transverse, anterior margin strongly rounded, front angles rather obtusely angulate, lateral margins reflexed, narrowly ridged and arcuate, hind angles rounded, basal margin very narrowly edged and slightly bisinuate; disk convex, closely punctured, the punctures comparatively small at apical portion, interspace of punctures delicately shagreened laterally. Scutellum transverse, nearly pentagonal; upper surface slightly convex, minutely punctured. Elytra parallel-sided, rather rounded at hind end, about three-fifths as wide as its length, subequal to pronotum at base in width; dorsum moderately convex, irregularly and closely covered with rather small but deep punctures as thorax, which are becoming smaller posteriorly and somewhat uneven on anterior half. Prosternum gently and longitudinally raised in middle, finely shagreened and uneven; prosternal process strongly prominent posteriorly, wider at base than apex, curved inwardly at apex; propleura finely shagreened. Metasternum rather closely punctate and interspace finely shagreened laterally, and somewhat rugose and not closely and finely punctured at middle. Abdomen finely punctured and finely shagreened, with a minute pore on 1st segment in male.

Body length: ca. 2 mm.

Host-fungus: *Schizophyllum commune* Fr.

Cotypes: 21 exs. Noziri, Nagano, August 24, 1941; 2 exs. Karuizawa, Nagano, May 31, 1940; 4 exs. Aoyama, Tokyo, May 27, 1946, T. Nakane leg.; 2 exs. Saikyo University, Kyoto, July 25, 1953, T. Kishii leg. Type-specimens are preserved in our collection, as that of other new species described in the present paper.

Present new species is somewhat allied to *Cis* (*s. str.*) *nipponicus* Chûjô, but may be separated by narrower and smaller body, colouration of body, patterns of brown or blackish red, and uniformity of elytral punctures.

* Biological Laboratory ** Entomological Laboratory

Cis (s. str.) brevipennis sp. nov. (Fig. 2)

Subcylindrical, short, subparallel; dark brown, with mouth-parts, antennae and legs paler. Body above densely clothed with scale-like setae; mouth-parts, antennae, body beneath and legs pubescent.

Head scantily excavated, behind somewhat transversely impressed in middle, and the part just before the impression ovally raised, rather closely but shallowly punctured and indistinctly shagreened, head in front with a simply rounded and reflexed crest front margin of clypeus roundly projecting in middle. Antennae 10-segmented, 1st segment stoutly globular, 2nd moderately stout, 3rd to 7th subequal in breadth, apical three strongly swollen with relaxed articulation; proportional lengths of antennal segments as follows: 5.6 : 4.0 : 4.1 : 3.0 : 2.2 : 2.0 : 2.0 : 5.0 : 5.2 : 7.9 (46 units=0.5mm.). Pronotum transverse, anterior border strongly produced anteriorly, lateral borders evenly arcuate, feebly reflexed and narrowly marginate, basal corners obtusely angulate, basal border slightly bisinuate, very finely marginate on lateral sides; disk strongly convex, closely interspersed with rather large punctures. Scutellum small, transverse, subsemicircular or rounded triangular 1.4 times as long as broads; surface slightly convex, shagreened and uneven. Elytra subparallel, together broadly rounded at apex, at base subequal in breadth to base of pronotum, strongly convex, closely bearing two kinds of punctures in size, large and smaller ones, feebly rugged anteriorly. Prosternum longitudinally upheaved along middle and slightly concave on each side, and surface finely shagreened and rugged laterally; prosternal process somewhat widely projecting posteriorly and curved proximally at apex; propleura shagreened as prosternum. Metasternum finely shagreened, rather closely and very shallowly punctured laterally and feebly raised in middle. Abdomen finely sculptured and roughly punctured; in male 1st abdominal segment with a setigerous pore at middle, and its portion feebly raised. Fore tibia with a rather blunt but sharply pointed tooth at apical outside in male, the tooth curved underward at apex.

Body length: ca. 1.5 mm.

Host-fungus: *Polystictus versicolor* (L.) Fr.

Cotypes: 2 ♂ & 1 ♀ July 28, 1941, Konsei-Toge, Nikko National Park, T. Nakane leg.

Present new species rather resembles *Cis (s. str.) nipponicus* Chûjô, but may be easily distinguished by much shorter body and unarmed apical margin of head in male.

Cis (Eridaulus) rufocastaneus sp. nov. (Fig. 3)

♂: Cylindrical, narrowing anteriorly and posteriorly; brown to reddish brown, eyes black, labial palpi and antennae paler. Body above very shortly pubescent microscopically; mouth-parts, antennae, body beneath and legs pubescent.

Head rather flattened, but not excavated, with vertex convex, frons with a rather weak impression behind in middle, rather sparsely and minutely punctured and finely shagreened, anterior margin of head rather strongly and obtusely triangularly projecting anteriorly on each side, clypeus in front very strongly rounded-produced at middle. Antennae 10-segmented, 1st segment stout. 2nd moderately stout, 3rd to 7th subequal to each other in breadth, distal three dilated and articulation of each segment loose; ratio of antennal segments in length as follows: 8.2 : 4.7 : 5.3 : 3.5 : 2.2 : 2.0 : 1.9 : 6.0 : 6.3 : 7.2 (46 units=0.5mm.). Pronotum transverse, narrowing anteriorly, anterior margin strongly rounded, not emarginate but slightly depressed at middle, front corners rather obtusely angulate, lateral margins rounded and narrowly edged, basal corners strongly rounded, basal margin slightly bisinuate, narrowly edged; upper surface strongly convex, finely shagreened and closely covered with punctures, a little more in lateral parts, and

with a small oblong smooth space along median line before the base. Scutellum subtriangular, slightly convex, with a few fine punctures. Elytra slightly tapering, strongly rounded at hind end, one and a half times as long as basal width and nearly equal in width to base of pronotum, strongly convex, rather closely and unevenly punctured and interspace bearing fine setigerous punctures, rather rugose anteriorly. Prosternum minutely shagreened, longitudinally upheaved along middle and its each side excavated; prosternal process narrowly lengthened and curved inwardly; propleura finely sculptured. Metasternum rather closely punctured and finely shagreened, with a delicately punctate part extending from hind to middle. Abdomen indefinitely punctate, shagreened and a little rugose, 1st segment with a not so small but indistinct setigerous pore. Fore tibia with a projection at apical end of outside.

♀: Nearly similar to male, but projection of head rather weak and rounded. Abdominal pore and projections of fore tibiae lacking.

Body length: 1.8—2.0 mm.

Host-fungus: *Fomes pinicola* (Sw.) Fr.

Cotypes: 2 ♂♂ & 1 ♀ Mitsumine, Chichibu, Sept. 23, 1940, collected by T. Nakane.

The new species is closely allied to *Cis (Eridaulus) konoï* Chûjô from Saghalien, but differs in having no impression in the anterior portion of pronotum in male, rather large abdominal pore, nearly shagreened body beneath, etc.

Ennearthron (s. str.) poriae sp. nov. (Fig. 4)

Narrowly cylindrical, parallel-sided; blackish brown, with clypeus, anterior margin of frons and of pronotum pale brown, mouth-parts, antennae and legs yellowish brown. Body above with clothing of yellowish short setae, elytral setae are sometimes set in longitudinal rows; mouth-parts, antennae, legs and abdomen shortly pubescent.

Head with vertex convex, frons very weakly impressed in middle, rather closely covered with small punctures and delicately shagreened, anterior margin of head strongly rounded and marginate on both sides but flat in middle of clypeus. Antennae 9-segmented, basal two segments stout, 3rd to 6th narrow, apical three widened and loosely articulated; proportional lengths of each segment about: 5.0 : 4.1 : 2.8 : 1.9 : 2.1 : 1.3 : 4.2 : 4.9 : 6.0 (46 units=0.5 mm.). Pronotum a little wider than long, apical border rather strongly arched, front corners obtusely angulate, lateral borders rounded and narrowly marginate, basal corners nearly rounded or slightly angulate, basal border nearly straight and much narrowly marginate; upper surface strongly convex, rather closely and finely punctured and shagreened. Scutellum transverse, very broadly triangular, rugged. Elytra parallel, rounded posteriorly, twice as long as wide, at base as broad as pronotum, strongly convex, moderately closely covered with small punctures, and rugose indistinctly near base. Body beneath finely shagreened. Prosternum upheaved along middle; prosternal process rather widely projecting. Metasternum broadly convex. In male 1st abdominal segment with a rather large setigerous pore.

Body length: 1.3—1.5 mm.

Host-fungus: *Poria* sp.

Cotypes: 1 ex. Inogashira Park, Tokyo, July 7, 1940; 21 exs. Noziri, Nagano, July 21, 1941 & May 1, 1942, T. Nakane leg.

The present new species is resembling *Ennearthron (s. str.) yuasai* Chûjô, but may be distinguished by having blackish and narrow body, pronotum not so narrowing anteriorly, and longer setae covering much sparsely body above.

Ennearthron (s. str.) chujoï sp. nov. (Fig. 5)

♂: Sudcylindrical, parallel-sided; yellowish brown, eyes black, mouth-parts (except mandibles), basal six segments of antennae and legs paler. Body above with close cover-

ing of scale-like light yellowish setae which grow on punctures; mouth-parts, antennae, body below and legs pubescent.

Head slightly impressed and deeply so at median part of frons, coarsely punctured; anterior margin of head strongly projecting on each side, their laminate projections subtriangular and reflexed, median part of anterior margin of clypeus very strongly rounded. Antennae 9-segmented, 1st segment as well as 2nd stout, nearly globose, 3rd to 6th subequal in breadth, terminal three expanded and loosely jointed to each other; ratio of each length of antennal segments as follows: 6.2 : 5.2 : 5.1 : 2.6 : 2.0 : 1.8 : 5.3 : 5.9 : 7.8 (46 units=0.5 mm.). Pronotum a little longer than wide, anterior border protruded, with a strong projection on each side of middle, deeply incised semicircularly between projections, front corners obtuse and slightly prominent, lateral borders arched and narrowly rimmed, basal corners strongly rounded, hind border a little bisinuate, narrowly marginate; dorsum strongly convex, closely punctured, with a median longitudinal smooth line behind middle, punctures deep and distinct. Scutellum small, transverse semicircular, finely punctured. Elytra parallel, at base as wide as base of pronotum, strongly convex, irregularly and closely covered with larger punctures, but the punctures smaller near the apex. Prosternum longitudinally upheaved along middle, feebly wrinkled and finely shagreened, prosternal process strongly but narrowly prolonged behind and curved inwardly at apex; propleura indistinctly rugose. Metasternum finely shagreened and rather sparsely punctured, but impunctate in middle. Abdomen delicately punctured and finely shagreened, 1st segment with a setigerous pore. Fore legs with a blunt denticulation at apical outside of tibia.

♀ : Same as male, except the points as follows: head rather closely and distinctly punctured, frons convex, anterior margin of head and pronotum rounded and unarmed. Protibial denticulation and abdominal pore lacking.

Body length: ca. 1.5 mm.

Cotypes: 1 ♂ & 1 ♀ Noziri, Nagano, August 9, 1939; 1 ♂ & 1 ♀ Aoyama, Tokyo, November, 1939 & April 17, 1940; 1 ♂ & 1 ♀ Asamajinja, Gotenba, Yamanashi, June 2, 1941; 1 ♂ & 3 ♀♀ Sakata, Yamagata, July 2, 1948, collected by T. Nakane.

Present new species is somewhat related to *Ennearthron* (*s. str.*) *yusai* Chûjô and *Ennearthron* (*s. str.*) *poriae* sp. nov., but may be easily separated by strong projections of clypeus and pronotum in the male and the coarse punctation on body above.

Odontocis gen. nov.

Nearly cylindrical, subparallel-sided; strongly shiny, nearly glabrous. Sexual difference distinct at apical margins of head and pronotum, antennae 9-segmented, 3rd segment longer than 4th. Pronotum with upheaved prominency at apical margin in male. Elytra punctured nearly evenly in size, without rows of punctures. Prosternum with longitudinal upheaval process thinly laminate vertically, scarcely curved inwardly. Each fore leg with a row of projection-like setae on apical outside of tibia in both sexes.

This new genus is allied to *Ennearthron* Mellié, but may be divided by the shape of prosternal process and a row of peculiar setae on apical outside of fore tibia.

Genotype: *Odontocis denticollis* sp. nov.

Odontocis denticollis sp. nov. (Fig. 6 a, b)

♂ : Nearly cylindrical, subparallel-sided; chestnut brown, strongly shiny, eyes black, mouth-parts (except mandibles), antennae and legs paler. Body above nearly glabrous, but may be seen very short setae, which are set on punctures, under high power lens ($\times 72$); mouth-parts, antennae, and legs clothed with short pubescence.

Head depressed, frons with a longitudinally oval raising part in front, vertex convex, sparsely interspersed with small punctures, anterior margin of head projecting rectangularly.

larly and somewhat roundly emarginate at middle and the projection reflexed. Antennae 9-segmented, 1st and 2nd segments stout, 3rd to 6th subequal in width, final three expanded and their articulation loose; proportional lengths of antennal segments about: 7.1 : 5.2 : 6.0 : 2.3 : 2.2 : 1.7 : 5.6 : 5.3 : 8.0 (46 units = 0.5 mm.). Pronotum in front with three longitudinal carinae, one at middle protruded forwards as a horn-like process, and lateral ones obtusely angulate at apical margin, each front angle strongly rounded, lateral margins not seen from above, strongly arched, and narrowly edged; dorsum strongly convex, closely and distinctly punctured, with a longitudinal impunctate line in posterior middle, interspace finely reticulate. Scutellum nearly triangular, obtusely angulate posteriorly; dorsum minutely punctured and finely shagreened. Elytra at base nearly as broad as base of pronotum and nearly three-fifths as wide as length, strongly convex, rather closely punctured, but the punctation sparser than that of middle part of pronotum, rugose. Prosternum rather weakly and longitudinally upheaved along middle, covered with large but shallow punctures and finely shagreened; prosternal process very narrowly projecting, forming a very thin vertical lamina. Propleura shallowly punctate and finely shagreened. Metasternum delicately reticular, rather closely covered with large and shallow punctures on lateral side, but with small punctures in middle and at base. Abdomen indistinctly punctured and finely shagreened, 1st segment with a setigerous pore. Fore tibia with a row of special setae along outside extending from middle to apical end.

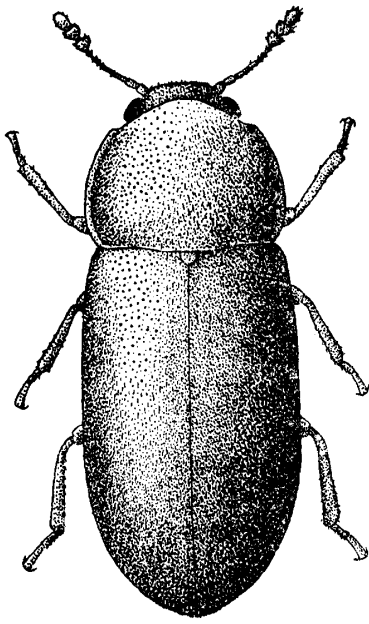
♀ : Nearly same as male, except next points: punctures of head remarkable anteriorly, head nearly flattened, with slightly raised part of clypeus, anterior margin of head strongly rounded and edged (except middle of anterior margin of clypeus); clypeus roundly produced anteriorly in middle; pronotum simply rounded at apical margin; abdominal setigerous pore lacking.

Cotypes: 1 ♂ Marunuma, Nikko National Park, July 10, 1940, T. Nakane leg.; 2 ♂ ♂ 1 ♀ Yachi Spa, Towada National Park, July 28, 1952, A. Nobuchi leg.

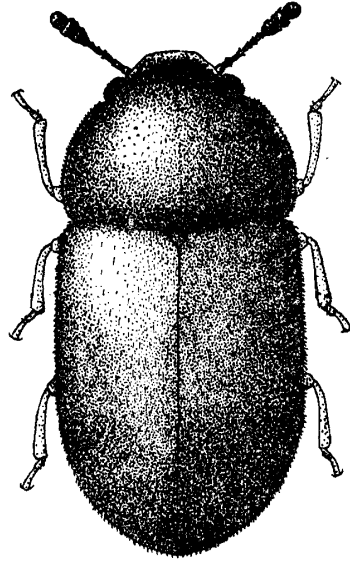
This new species may be separated from hitherto known species by peculiar shape of pronotum and prosternal process, and a row of setae on tibiae in both sexes.

-
- Fig. 1 *Cis (s. str.) schizophylli* sp. nov.
 Fig. 2 *Cis (s. str.) brevipennis* sp. nov.
 Fig. 3 *Cis (Eridaulus) rufocastaneus* sp. nov.
 Fig. 4 *Ennearthron (s. str.) poriae* sp. nov.
 Fig. 5 *Ennearthron (s. str.) chujoi* sp. nov.
 Fig. 6 a *Odontocis denticollis* sp. nov.
 Fig. 6 b Fore tibia of *Odontocis denticollis* sp. nov.
-

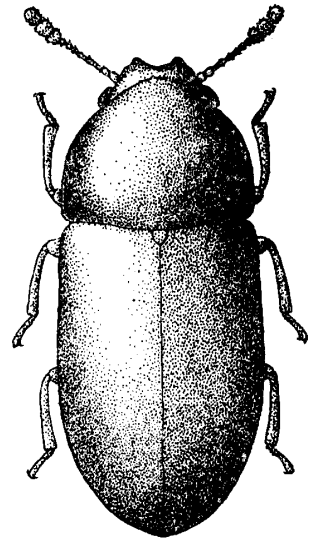
(Received December, 1954)



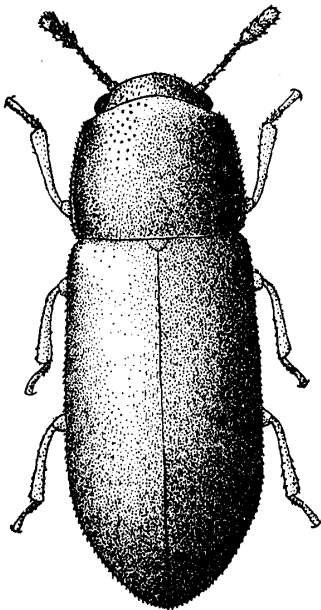
1



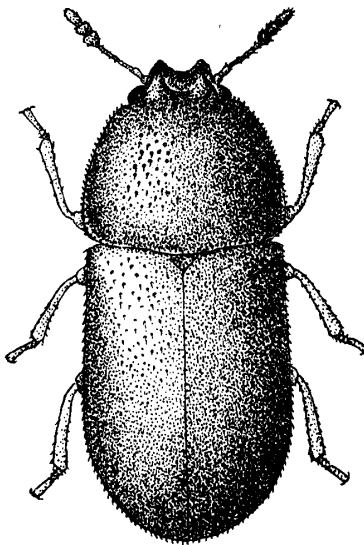
2



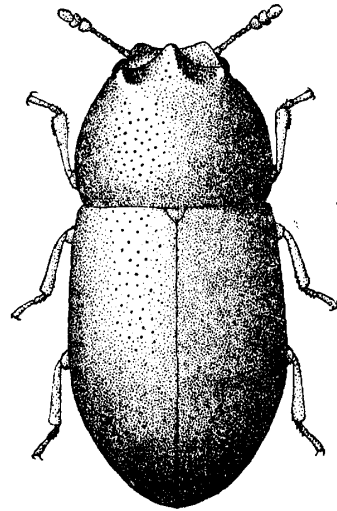
3



4



5



6a



b