



2015

## Lipid storage changes in human skeletal muscle during detraining

Rong Zhu

Chia-Hua Kuo

Caiyun Wen

M. Brennan Harris

*College of William and Mary*

Follow this and additional works at: <https://scholarworks.wm.edu/aspubs>

---

### Recommended Citation

Zhu, R., Wen, C., Li, J., Harris, M. B., Liu, Y. Y., & Kuo, C. H. (2015). Lipid storage changes in human skeletal muscle during detraining. *Frontiers in physiology*, 6, 309.

This Article is brought to you for free and open access by the Arts and Sciences at W&M ScholarWorks. It has been accepted for inclusion in Arts & Sciences Articles by an authorized administrator of W&M ScholarWorks. For more information, please contact [scholarworks@wm.edu](mailto:scholarworks@wm.edu).



# Lipid storage changes in human skeletal muscle during detraining

Rong Zhu<sup>1</sup>, Caiyun Wen<sup>2</sup>, Jiance Li<sup>2</sup>, M. Brennan Harris<sup>3</sup>, Yung-Yang Liu<sup>4,5†</sup> and Chia-Hua Kuo<sup>1,6\*†</sup>

<sup>1</sup> School of Sports Science, Wenzhou Medical University, Wenzhou, China, <sup>2</sup> Department of Radiology, The First Affiliated Hospital of Wenzhou Medical University, Wenzhou, China, <sup>3</sup> Department of Kinesiology and Health, College of William and Mary, Williamsburg, USA, <sup>4</sup> Institute of Clinical Medicine, School of Medicine, National Yang-Ming University, Taipei, Taiwan, <sup>5</sup> The Chest Department, Taipei Veterans General Hospital, Taipei, Taiwan, <sup>6</sup> Laboratory of Exercise Biochemistry, Department of Sports Sciences, University of Taipei, Taipei, Taiwan

## OPEN ACCESS

### Edited by:

Kieran Clarke,  
University of Oxford, UK

### Reviewed by:

Rhys David Evans,  
University of Oxford, UK  
Graham Kemp,  
University of Liverpool, UK

### \*Correspondence:

Chia-Hua Kuo  
kch@utapei.edu.tw

<sup>†</sup>These authors have contributed equally to this work.

### Specialty section:

This article was submitted to  
Lipidology,  
a section of the journal  
Frontiers in Physiology

Received: 14 July 2015

Accepted: 13 October 2015

Published: 03 November 2015

### Citation:

Zhu R, Wen C, Li J, Harris MB, Liu Y-Y and Kuo C-H (2015) Lipid storage changes in human skeletal muscle during detraining.  
*Front. Physiol.* 6:309.  
doi: 10.3389/fphys.2015.00309

Exercise training is known to increase intramuscular triglyceride content in both trained and untrained legs. The purpose of the study was to determine the changes of intramyocellular lipids (IMCL) and extramyocellular lipids (EMCL) of both trained and untrained legs during detraining. We measured both IMCL and EMCL levels in previously trained vs. untrained legs during 4-weeks of detraining after 6-weeks of strength training. Eight young men (aged  $21.4 \pm 1.4$  years) trained their vastus lateralis muscle in one leg using a dynamometer, whereas the contralateral leg served as untrained control. Muscle cross-sectional area (CSA), IMCL, EMCL, total creatine (creatinine + phosphocreatine) of extensor (vastus lateralis) muscles were assessed using magnetic resonance imaging (MRI) and proton magnetic resonance spectra (<sup>1</sup>H-MRS) before training, 3 days after and 28 days after the last bout of training. CSA was increased in both legs by Day 3 after training, and was still high at Day 28 post-training; IMCL increased in both legs by Day 3 after training, then decreased at Day 28 post-training only in the untrained leg; EMCL shows no significant change by Day 3 after training, but at Day 28 post-training has increased in the trained leg and decreased in the untrained leg; total creatine did not change significantly.

**Conclusion:** Decreases of IMCL and EMCL storages in previously untrained leg during detraining indicates an ectopic influence on tissue lipid storage by different metabolic demand among tissues in the same human body.

**Keywords:** muscle hypertrophy, strength, fatty infiltration, training, creatine, EMCL, IMCL, exercise

## INTRODUCTION

Lipid, as one of the most abundant sources of stored reducing hydrocarbon in the human body, not only serves as a fuel for ATP production, but also the main source of acetyl-CoA and as a source of hydrocarbon backbone for the syntheses of diverse biological compounds, such as phospholipid, cholesterol, ketones, and some amino acids for the construction of new cells. In humans, skeletal muscle is the major consumer of lipids during post-absorptive and fasting conditions (Coppack et al., 1990). Muscle hypertrophy after exercise training and atrophy after disuse reflect the

**Abbreviations:** IMCL, intramyocellular lipid; EMCL, extramyocellular lipid; <sup>1</sup>H-MRS, proton magnetic resonance spectra; FIDs, free induction decays; TMA, trimethylamine; TCr, Total Creatine; Cr, Free Creatine; PCr, Phosphocreatine.

exceptional adaptability of skeletal muscle to relocate hydrocarbon sources in response to changing physical demand.

Lipids in skeletal muscle can be divided into two compartments: intramyocellular lipids (IMCL) and extramyocellular lipids (EMCL), by proton magnetic resonance spectroscopy ( $^1\text{H-MRS}$ ), which has been successfully used to quantify the lipid content of skeletal muscle for two decades (Steidle et al., 2002; Godoy-Matos et al., 2010; Redzic et al., 2014). The methylene protons ( $-\text{CH}_2-$ )<sub>n</sub> of IMCL and EMCL dominate the proton ( $^1\text{H}$ ) magnetic resonance spectra of lipids in skeletal muscle. The methodology of using  $^1\text{H-MRS}$  to separate IMCL and EMCL has been justified in skeletal muscle by showing a severely asymmetrical distribution (Steidle et al., 2002) and the intervention that changes lipid distribution (Godoy-Matos et al., 2010). During an acute bout of moderate exercise, IMCL content, but not EMCL, decreases significantly in skeletal muscles (Rico-Sanz et al., 2000; Schrauwen-Hinderling et al., 2003). Endurance training with sufficient period of recovery significantly increases intramuscular triglyceride content (Shaw et al., 2012) consistent with increased IMCL (Haus et al., 2011).

Lipid storage in a tissue may be influenced by metabolic demand of ectopic tissue. For example, IMCL content of non-exercising human skeletal muscle is increased after exercise in trained cyclists before and after a 3-h cycling in the exercising vastus lateralis muscle (Schrauwen-Hinderling et al., 2003). In transgenic animal experiments, it have shown a decrease size of adipose tissue by increasing muscle growth (McPherron and Lee, 2002; Diaz et al., 2012). It is currently unknown whether EMCL as a rich storage pool of lipid in a sedentary leg can be influenced by training activity of another leg. EMCL is located much closer to working muscle fibers than abdominal lipid. Extracellular space is an aqueous environment, thus EMCL of leg muscles detected by proton MRS mirrors the amount of adipocyte infiltration within skeletal muscle (Popadic Gacesa et al., 2011). Recently, an inverse relationship between EMCL and physical function has been described in a preliminary study using  $^1\text{H-MRS}$  (Redzic et al., 2014). Given the fact that physical function is altered by exercise training, the purpose of the study was to determine the changes of EMCL and ICML in both trained and untrained legs in response to cessation of training.

## MATERIALS AND METHODS

### Participants

No physical training was performed 2 days prior to the study. All participants were non-athletes and healthy according to annual medical examinations. Baseline characteristics of the participants are summarized in **Table 1**. Prior to the  $^1\text{H-MRS}$  study, informed written consent was obtained from all eight male participants (aged  $21.4 \pm 1.4$  years). Institutional Review Board of Wenzhou Medical University approved the protocol. All procedures were conducted according to the principles expressed in the Declaration of Helsinki.

### Training Protocol

To avoid possible individual variations among participants, all subjects were asked to perform one-leg exercise training on an

**TABLE 1 | Physical characteristics.**

Participants	Age (yr)	Height (cm)	Weight (kg)	BMI
A	21	180	73	22.5
B	20	180	66	20.4
C	20	175	58	18.9
D	20	180	70	21.6
E	19	175	68	22.2
F	19	178	72	22.7
G	19	175	63	20.6
H	20	176	70	22.6

Isomed 2000 dynamometer (D&R, Hemaui, Germany) and their contralateral leg served as control. Participants were requested to conduct brief warm-up stretching lasting <5 min without significant subjective exertion before training. They were then asked to train their quadriceps and hamstring muscle groups in one leg with their greatest endeavor. For the first 3 weeks, exercise intensity included isokinetic (concentric/concentric) maximal knee flexion and extension at  $60^\circ/\text{s}$  (six repetitions for six sets with a 1-min rest), and at  $180^\circ/\text{s}$  (15 repetitions for two sets with a 1-min rest) with a 1-min rest interval between different angular velocities, 3 days a week. For the last 3 weeks, exercise volume maintained at an angular speed  $60^\circ/\text{s}$  six times for six sets with a 1-min rest interval, but  $180^\circ/\text{s}$  for 15 times with a 1-min rest interval for three sets, 3 days a week.

Isokinetic strength measurements were conducted using the dynamometer in consistent to which used in training. Before the testing procedure, all the subjects performed conditioning exercises and stretching of the lower extremities to warm up for 5 min. The attachments of participant to the dynamometer were readjusted to the center of motion of the lever arm and aligned as accurately as possible with the slightly changing flexion-extension axis of the joint each time before testing. A restraining belt was placed obliquely over the shoulder and thigh to secure the position of participant during motion. The resistance pad was placed on the distal site of tibia. The range of motion of the knee joint was set at  $0-90^\circ$ . Bilateral isokinetic (concentric/concentric) maximal knee flexion and extension at the angular speed of  $60^\circ/\text{s}$  (five repetitions),  $180^\circ/\text{s}$  (15 repetitions) were accomplished. Between the two sessions, subjects rested for 1 min. Vocal encouragement during the tests was consistently standardized. Flexion and extension peak torque values automatically produced by the device.

### MRS

Participants sat at rest for more than 5 min in the scan room. The entire scanning session included data acquisition for 90 min or less and was tolerated by all subjects at pre-exercise, post-training (3 days after the last bout of training) and detraining (28 days after the last bout of training). MR Imaging and spectroscopy data were acquired on a 3.0-T Philips Achieva MRI scanner (Philips Healthcare, Best, Netherlands) by using a 16-channel torso coil. In each examination, subjects lay in a supine position with both legs placed along the axis of the

coil and immobilized by firm padding. Transverse and sagittal longitudinal relaxation time-weighted MR images (repetition time minimum, echo time 15 ms) were acquired to determine the placement of the  $^1\text{H}$ -MRS voxels, with a slice thickness of 5 mm, a 40-cm field of view, and  $128 \times 256$  data matrix. Spectra were obtained from the vastus lateralis of both legs, using a point-resolved spectroscopy sequence with a repetition time-to-echo time ratio of 2000/50 ms and an  $18\text{-mm}^3$  voxel positioned within each of the muscles examined. The number of signal averages was 96 and the spectral collection time was 3 min 48 s.

### Cross-sectional Area (CSA) Analysis

Anatomical CSA of the thigh muscles was determined at mid-femur by MRI. The femur length was defined from the most proximal prominence of the greater trochanter to the most distal border of the lateral femur condyle. CSA analysis of individual muscles of the thigh were determined by using the computer software of 3.0-T Philips Achieva MRI scanner (Philips Healthcare, Best, Netherlands) before training, 3 days after and 28 days after the last bout of training.

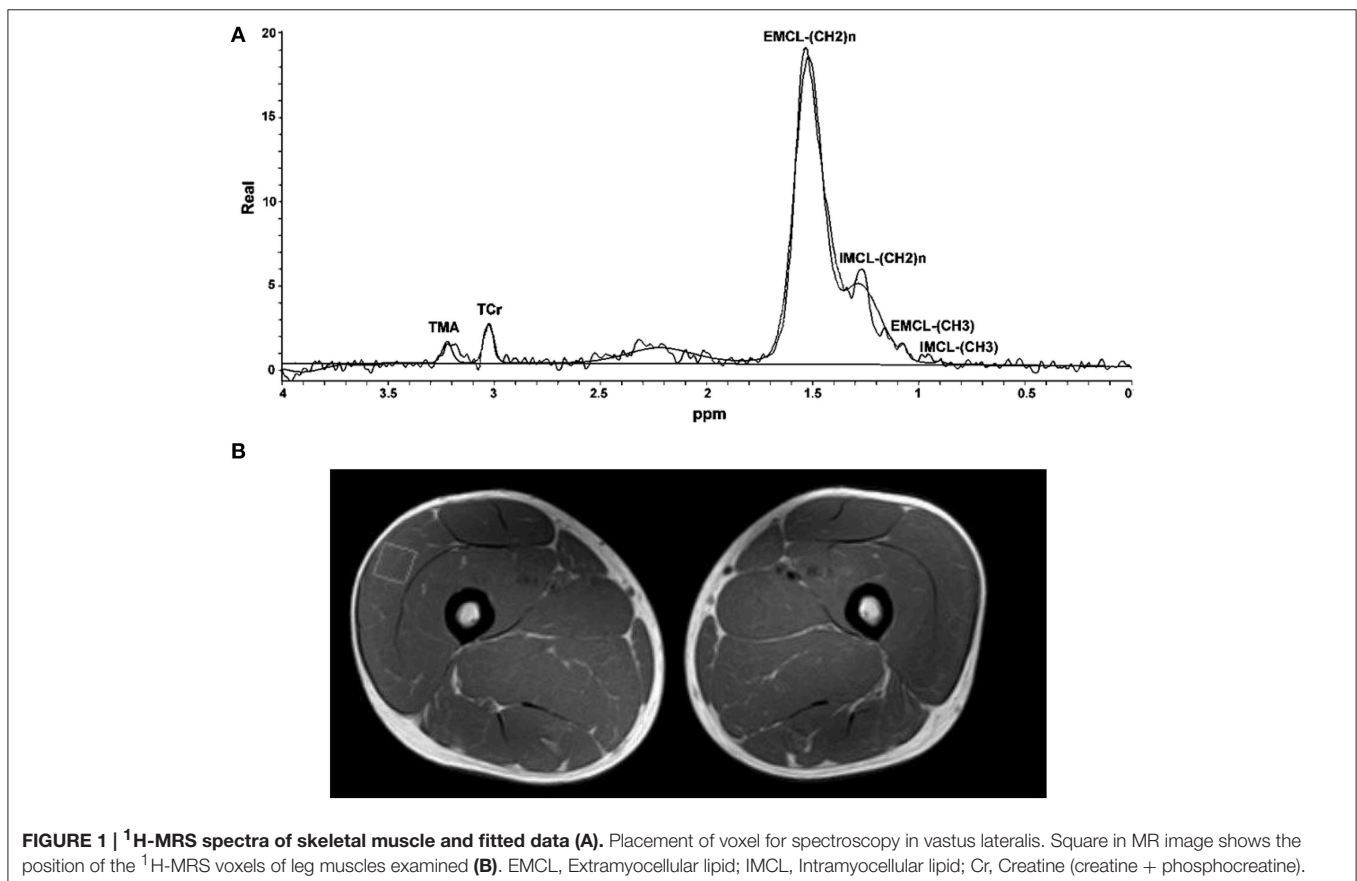
### Data Analysis

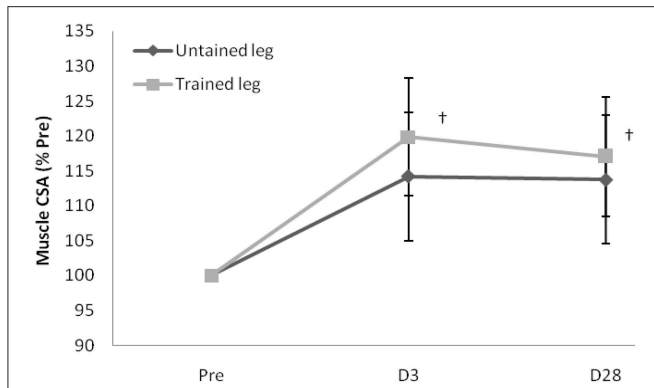
The analyses of *in vivo*  $^1\text{H}$ -MRS data of thigh muscles by Spectroview Software from Philips Achieva 3.0T TX EWS were performed in the time domain directly on free induction decays

(FIDs). Six resonances were described by six Gaussian line shapes in the frequency domain (**Figure 1**): (a) TMA (trimethylamine) peak at a resonance of 3.2 ppm, (b) TCr (total creatine), including free creatine (Cr) and phosphocreatine (PCr) peak at a resonance of 3.02 ppm, (c) EMCL-( $\text{CH}_2$ )<sub>n</sub> [extramyocellular lipid-( $\text{CH}_2$ )<sub>n</sub>] peak at a resonance of 1.5 ppm and (d) IMCL-( $\text{CH}_2$ )<sub>n</sub> [intramyocellular lipid( $\text{CH}_2$ )<sub>n</sub>] peak at a resonance of 1.3 ppm, (e) EMCL-( $\text{CH}_3$ ) peak at a resonance of 1.1 ppm and (f) IMCL-( $\text{CH}_3$ ) peak at a resonance of 0.9 ppm. The water signal peaks at 4.7 ppm. Unsuppressed water spectra obtained from the same voxel were used as the internal reference for the relative quantification of the metabolite resonances. All non-water resonances were removed from the unsuppressed FIDs by using the Hankel- Lanczos single-variable decomposition method (de Beer et al., 1992).

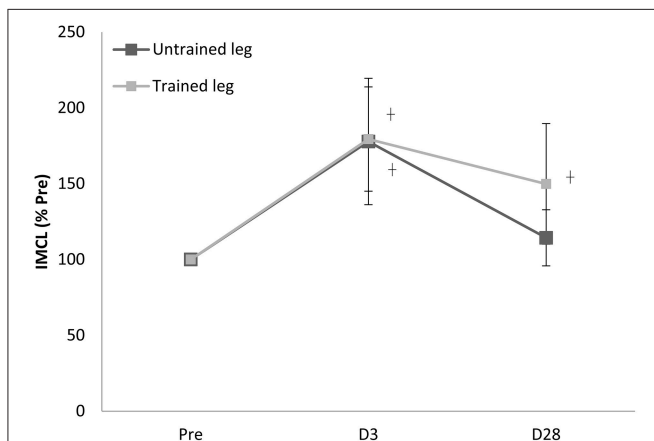
### Statistical Analysis

Due to small sample size, the Shapiro-Wilk test was used to test whether the data were normally distributed, and Levene's test was used to confirm the homogeneity of variances. Paired data were analyzed using the non-parametric Wilcoxon's signed rank test. To analyze changes over time, a Friedman test was used and when a significant F-ratio was found, Wilcoxon's signed rank test was used for *post-hoc* analysis. Data are presented as % pre-trained level in means  $\pm$  standard error (SE). A total of six subjects would have been required for 80% power, according to power estimation





**FIGURE 2 | Increased muscle cross-sectional area (CSA) of trained leg well-maintained during the 28-day detraining period.** Values are expressed as % of Pre. <sup>†</sup>significance against Pre,  $p < 0.05$ . D3 and D28: Day 3 and Day 28 after the last training bout.

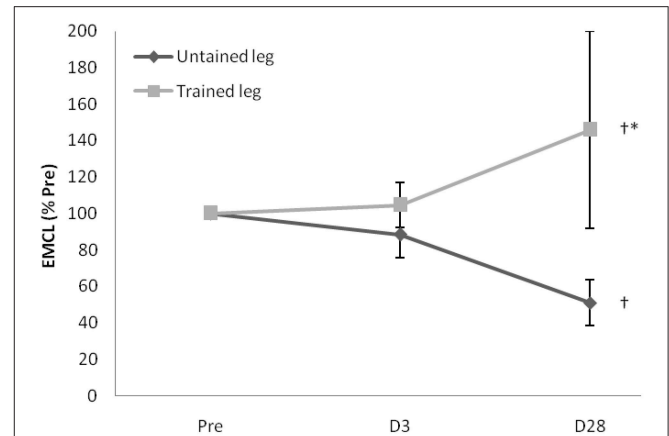


**FIGURE 3 | Training effect on increasing intramyocellular lipid (IMCL) content of trained vastus lateralis vanished in 28 days after cessation of training.** <sup>†</sup>significance against Pre,  $p < 0.05$ . D3 and D28: Day 3 and Day 28 after the last training bout.

calculated to determine sample size. A  $p < 0.05$  was considered significant for all tests.

## RESULTS

Proton MRS resonances for IMCL, EMCL, and total creatine are shown by Gaussian line shapes in the frequency domain (Figure 1A). A representative MR image for muscle is shown in Figure 1B. Three days after the last exercise training bout, muscle CSA of trained leg significantly increased (+20%) and untrained leg significantly increased to a lesser extent (+14%) above pre-trained level (Figure 2). CSA remained significantly greater than the pre-trained level after 28 days of detraining. Exercise training significantly increased IMCL of both trained and untrained vastus lateralis muscles (+77% and +79%,  $P < 0.05$ ), observed 3 days after the last exercise training bout (Figure 3). However, IMCL reversed toward pre-exercise level in



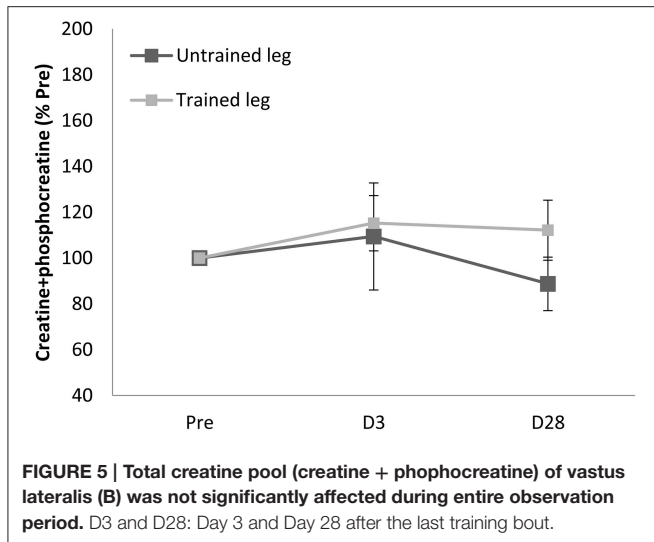
**FIGURE 4 | Extramyocellular lipid (EMCL) contents of trained vastus lateralis continued to increase while untrained leg exhibited an opposing trend during the 28-day detraining period.** One unique participant had 39% and 417% increases at D3 and D28 above Pre, contributing the high average value and variation of trained leg. When two extreme data were replaced by mean, only a non-significant 11% increase is observed. <sup>†</sup>Significance against Pre,  $p < 0.05$ . \*Significance against untrained leg,  $p < 0.05$ . D3 and D28: Day 3 and Day 28 after the last training bout.

the previously untrained vastus lateralis muscle during 28 days of detraining ( $P > 0.05$ ), but not as much change in the previously trained muscle. EMCL content of trained vastus lateralis was significantly increased (+46%,  $P < 0.05$ ) while ECML content of untrained vastus lateralis was significantly decreased (−49%,  $P < 0.05$ ) following 28 days of detraining (Figure 4). No significant difference was reached in total creatine content between trained and untrained vastus lateralis muscles (Figure 5).

## DISCUSSION

In this study, we hypothesize that lipid storage (ECML and ICML) in a leg can be influenced by changing training activity of another leg. This is based on the previous observation from both animal and human studies showing a possible ectopic influence of lipid storage in a tissue. In animals, increasing muscle growth can decrease size of adipose tissues (McPherron and Lee, 2002; Diaz et al., 2012). In humans, triglyceride of skeletal muscle increases (Shaw et al., 2012) and thickness of subcutaneous (Krotkiewski et al., 1979) and abdominal fat (Vissers et al., 2013) decreases after exercise training. IMCL content of non-exercising human skeletal muscle has been found to increase after exercise training (Schrauwen-Hinderling et al., 2003). In this study, we asked the question whether EMCL and IMCL of untrained leg can be influenced during detraining of previously trained leg. The major findings of the study are: (1) a fall in EMCL in the untrained leg during detraining; (2) IMCL increases in both legs during training, but has only fallen in the untrained leg during detraining. The results of the study provide a support for the idea that lipid storage of an inactive tissue can be influenced by a changing metabolic demand of another tissue within the same human body.





The role of EMCL in muscle tissue is currently unclear. Unlike IMCL, EMCL of adipocyte is not consumed during muscular contractions (Brechtel et al., 2001). However, adipocytes in skeletal muscle are comparably closer to the working muscle fibers than abdominal adipocytes. Thus, EMCL of skeletal muscle tissue may serve as hydrocarbon source to stably maintain the increased basal demand on hydrocarbon sources after muscle tissue expansion.

In humans, lipids are used not only as fuel, but as the main source of acetyl-CoA, which provides the hydrocarbon backbone for synthesizing many biological molecules, such as cholesterol, ketones, phospholipids, some amino acids, and glycolipids. These biomaterials are required for constructing cells. Some of them can be exchanged across tissues via the circulation creating a whole-body hydrocarbon source redistribution and

which is particularly in high demand when local cell turnover increases. Growth, normally occurring after destructive or damaging events, will attract hydrocarbon sources for fast cell repair and proliferation. It has been demonstrated that promoting either muscle size expansion (McPherron and Lee, 2002; Diaz et al., 2012) or tumor growth (Camus et al., 2014) can decrease fat mass effectively, suggesting that fatty hydrocarbon sources relocate toward the tissues with high cell damage and proliferation.

In this study, we do not provide evidence to explain the mechanism underlying asymmetrical changes of EMCL between legs. Cell death and renewal of muscle and adipose tissues are continuously taking place in human adults (Spalding et al., 2008). The balance of cell death and repopulation of a tissue determines the eventual size and morphology of local tissue. It would be interesting to see whether EMCL changes on both legs observed in the study is a result of asymmetrical local attraction and proliferation to stem cells in response to the one-leg challenge. In addition, differentiation of localized stem cell in skeletal muscle toward lineages of myogenesis or adipogenesis under different physical stressors such as exercise remains an unexplored field for the future.

In conclusion, decreased IMCL and EMCL levels in an untrained leg during a 4-week detraining suggest that the amount of lipid storage of inactive tissues can be influenced by energy-depleting experience of active tissues in the same human body. Our finding provides a support the ectopic influence on lipid storage by metabolic demand of distal tissue in the same human body.

## FUNDING

The study was funded by grants from University of Taipei and General Administration of Sport of China Project 2012B060.

## REFERENCES

- Brechtel, K., Niess, A. M., Machann, J., Rett, K., Schick, F., Claussen, C. D., et al. (2001). Utilisation of intramyocellular lipids (IMCLs) during exercise as assessed by proton magnetic resonance spectroscopy (1H-MRS). *Horm. Metab. Res.* 33, 63–66. doi: 10.1055/s-2001-12407
- Camus, V., Lanic, H., Kraut, J., Modzelewski, R., Clatot, F., Picquetot, J. M., et al. (2014). Prognostic impact of fat tissue loss and cachexia assessed by computed tomography scan in elderly patients with diffuse large B-cell lymphoma treated with immunochemotherapy. *Eur. J. Haematol.* 93, 9–18. doi: 10.1111/ejh.12285
- Coppack, S. W., Fisher, R. M., Gibbons, G. F., Humphreys, S. M., McDonough, M. J., Potts, J. L., et al. (1990). Postprandial substrate deposition in human forearm and adipose tissues *in vivo*. *Clin. Sci. (Lond.)* 79, 339–348. doi: 10.1042/cs0790339
- de Beer, R., van den Boogaart, A., van Ormondt, D., Pijnappel, W. W., den Hollander, J. A., Marien, A. J., et al. (1992). Application of time-domain fitting in the quantification of *in vivo* 1H spectroscopic imaging data sets. *NMR Biomed.* 5, 171–178. doi: 10.1002/nbm.1940050403
- Diaz, M., Martel, N., Fitzsimmons, R. L., Eriksson, N. A., Cowin, G. J., Thomas, G. P., et al. (2012). Ski Overexpression in skeletal muscle modulates genetic programs that control susceptibility to diet-induced obesity and insulin signaling. *Obesity* 20, 2157–2167. doi: 10.1038/oby.2012.101
- Godoy-Matos, A. F., Bahia, L. R., Domingues, R. C., Tambascia, M., Geloneze, B., Kraemer-Aguiar, L. G., et al. (2010). Rosiglitazone decreases intra- to extramyocellular fat ratio in obese non-diabetic adults with metabolic syndrome. *Diabet. Med.* 27, 23–29. doi: 10.1111/j.1464-5491.2009.02868.x
- Haus, J. M., Solomon, T. P., Lu, L., Jesberger, J. A., Barkoukis, H., Flask, C. A., et al. (2011). Intramyocellular lipid content and insulin sensitivity are increased following a short-term low-glycemic index diet and exercise intervention. *Am. J. Physiol. Endocrinol. Metab.* 301, E511–E516. doi: 10.1152/ajpendo.00221.2011
- Krotkiewski, M., Aniansson, A., Grimby, G., Björntorp, P., and Sjöström, L. (1979). The effect of unilateral isokinetic strength training on local adipose and muscle tissue morphology, thickness, and enzymes. *Eur. J. Appl. Physiol. Occup. Physiol.* 42, 271–281. doi: 10.1007/BF00423297
- McPherron, A. C., and Lee, S.-J. (2002). Suppression of body fat accumulation in myostatin-deficient mice. *J. Clin. Invest.* 109, 595–601. doi: 10.1172/JCI0213562
- Popadic Gacesa, J. Z., Kozic, D. B., and Grujic, N. G. (2011). Triceps brachii strength and regional body composition changes after detraining quantified by MRI. *J. Magn. Reson. Imaging* 33, 1114–1120. doi: 10.1002/jmri.22548
- Redzic, M., Powell, D., Lutz, C., and Thomas, D. (2014). Differences in extramyocellular lipid and physical function in older adults with sufficient and insufficient vitamin D status (260.2). *FASEB J.* 28. Available online at: [http://www.fasebj.org/content/28/1\\_Supplement/260.2](http://www.fasebj.org/content/28/1_Supplement/260.2)

- Rico-Sanz, J., Moosavi, M., Thomas, E. L., McCarthy, J., Coutts, G. A., Saeed, N., et al. (2000). *In vivo* evaluation of the effects of continuous exercise on skeletal muscle triglycerides in trained humans. *Lipids* 35, 1313–1318. doi: 10.1007/s11745-000-0647-2
- Schrauwen-Hinderling, V. B., van Loon, L. J. C., Koopman, R., Nicolay, K., Saris, W. H. M., and Kooi, M. E. (2003). Intramyocellular lipid content is increased after exercise in nonexercising human skeletal muscle. *J. Appl. Physiol.* 95, 2328–2332. doi: 10.1152/jappphysiol.00304.2003
- Shaw, C. S., Shepherd, S. O., Wagenmakers, A. J., Hansen, D., Dendale, P., and van Loon, L. J. (2012). Prolonged exercise training increases intramuscular lipid content and perilipin 2 expression in type I muscle fibers of patients with type 2 diabetes. *Am. J. Physiol. Endocrinol. Metab.* 303, E1158–E1165. doi: 10.1152/ajpendo.00272.2012
- Spalding, K. L., Arner, E., Westermark, P. O., Bernard, S., Buchholz, B. A., Bergmann, O., et al. (2008). Dynamics of fat cell turnover in humans. *Nature* 453, 783–787. doi: 10.1038/nature06902
- Steidle, G., Machann, J., Claussen, C. D., and Schick, F. (2002). Separation of intra- and extramyocellular lipid signals in proton MR spectra by determination of their magnetic field distribution. *J. Magn. Reson.* 154, 228–235. doi: 10.1006/jmre.2001.2481
- Visser, D., Hens, W., Taeymans, J., Baeyens, J.-P., Poortmans, J., and Van Gaal, L. (2013). The effect of exercise on visceral adipose tissue in overweight adults: a systematic review and meta-analysis. *PLoS ONE* 8:e56415. doi: 10.1371/journal.pone.0056415

**Conflict of Interest Statement:** The authors declare that the research was conducted in the absence of any commercial or financial relationships that could be construed as a potential conflict of interest.

Copyright © 2015 Zhu, Wen, Li, Harris, Liu and Kuo. This is an open-access article distributed under the terms of the Creative Commons Attribution License (CC BY). The use, distribution or reproduction in other forums is permitted, provided the original author(s) or licensor are credited and that the original publication in this journal is cited, in accordance with accepted academic practice. No use, distribution or reproduction is permitted which does not comply with these terms.