



W&M ScholarWorks

Arts & Sciences Articles

Arts and Sciences

4-2-2018

N-terminal Sumoylation of Centromeric Histone H3 Variant Cse4 Regulates Its Proteolysis To Prevent Mislocalization to Non-centromeric Chromatin

Kentaro Ohkuni

Reuben Levy-Myers
College of William and Mary

Jack Warren

Wei-Chun Au

Yoshimitsu Takahashi

See next page for additional authors

Follow this and additional works at: <https://scholarworks.wm.edu/aspubs>

Recommended Citation

Ohkuni, Kentaro; Levy-Myers, Reuben; Warren, Jack; Au, Wei-Chun; Takahashi, Yoshimitsu; Baker, Richard E.; and Basrai, Munira A., "N-terminal Sumoylation of Centromeric Histone H3 Variant Cse4 Regulates Its Proteolysis To Prevent Mislocalization to Non-centromeric Chromatin" (2018). G3-GENES GENOMES GENETICS. 44. 1215-1223. 10.1534/g3.117.300419

This Article is brought to you for free and open access by the Arts and Sciences at W&M ScholarWorks. It has been accepted for inclusion in Arts & Sciences Articles by an authorized administrator of W&M ScholarWorks. For more information, please contact scholarworks@wm.edu.

Authors

Kentaro Ohkuni, Reuben Levy-Myers, Jack Warren, Wei-Chun Au, Yoshimitsu Takahashi, Richard E. Baker, and Munira A. Basrai

N-terminal Sumoylation of Centromeric Histone H3 Variant Cse4 Regulates Its Proteolysis To Prevent Mislocalization to Non-centromeric Chromatin

Kentaro Ohkuni,¹ Reuben Levy-Myers,^{1,2} Jack Warren,¹ Wei-Chun Au,¹ Yoshimitsu Takahashi,¹ Richard E. Baker,³ and Munira A. Basrai^{1,*}

¹Genetics Branch, Center for Cancer Research, National Cancer Institute, National Institute of Health, Bethesda, Maryland 20892, ²Biology Department, The College of William & Mary, Williamsburg, Virginia 23187, ³Department of Microbiology and Physiological Systems, University of Massachusetts Medical School, Worcester, Massachusetts 01655

ABSTRACT Stringent regulation of cellular levels of evolutionarily conserved centromeric histone H3 variant (CENP-A in humans, CID in flies, Cse4 in yeast) prevents its mislocalization to non-centromeric chromatin. Overexpression and mislocalization of CENP-A has been observed in cancers and leads to aneuploidy in yeast, flies, and human cells. Ubiquitin-mediated proteolysis of Cse4 by E3 ligases such as Psh1 and Sumo-Targeted Ubiquitin Ligase (STUbL) Slx5 prevent mislocalization of Cse4. Previously, we identified Siz1 and Siz2 as the major E3 ligases for sumoylation of Cse4. In this study, we have identified lysine 65 (K65) in Cse4 as a site that regulates sumoylation and ubiquitin-mediated proteolysis of Cse4 by Slx5. Strains expressing *cse4 K65R* exhibit reduced levels of sumoylated and ubiquitinated Cse4 *in vivo*. Furthermore, co-immunoprecipitation experiments reveal reduced interaction of *cse4 K65R* with Slx5, leading to increased stability and mislocalization of *cse4 K65R* under normal physiological conditions. Based on the increased stability of *cse4 K65R* in *psh1Δ* strains but not in *slx5Δ* strains, we conclude that Slx5 targets sumoylated Cse4 K65 for ubiquitination-mediated proteolysis independent of Psh1. In summary, we have identified and characterized the physiological role of Cse4 K65 in sumoylation, ubiquitin-mediated proteolysis, and localization of Cse4 for genome stability.

KEYWORDS

Sumoylation
Ubiquitination
Kinetochores
E3 ubiquitin ligase
Cse4
Slx5
Psh1
Saccharomyces cerevisiae

Evolutionarily conserved centromeric histone H3, CENP-A (Cse4 in *Saccharomyces cerevisiae*, Cnp1 in *Schizosaccharomyces pombe*, CID in *Drosophila*, and CENP-A in humans), is essential for faithful chromosome segregation. Overexpression of Cse4, CID, and CENP-A leads to its mislocalization to non-centromeric regions and contributes to aneuploidy in yeast, flies, and human cells, respectively (Heun *et al.* 2006; Moreno-Moreno *et al.* 2006; Collins *et al.* 2004; Au *et al.* 2008; Shrestha *et al.* 2017). Overexpression and mislocalization of CENP-A, which is observed in many cancers, is associated with poor prognosis and increased invasiveness (Tomonaga *et al.* 2003; Amato *et al.* 2009; Hu *et al.* 2010; Li *et al.* 2011; Wu *et al.* 2012; Lacoste *et al.* 2014; Athwal *et al.*

2015; Sun *et al.* 2016). Hence, characterization of pathways that regulate cellular levels of CENP-A and its homologs will help us to understand how overexpression and mislocalization of CENP-A contributes to tumorigenesis in human cells.

In budding yeast, ubiquitin-mediated proteolysis of Cse4 has been shown to regulate cellular levels of Cse4 and this prevents its mislocalization to non-centromeric regions (Collins *et al.* 2004). Proteolysis of Cse4 is regulated by several proteins: Psh1 (E3 ubiquitin ligase), Doa1 (WD-repeat protein), Fpr3 (proline isomerase), Ubp8 (ubiquitin protease), Rcy1 (F-box protein), and Ubr1 (E3 ubiquitin ligase) (Hewawasam *et al.* 2010; Ranjitkar *et al.* 2010; Au *et al.* 2013; Ohkuni *et al.* 2014; Canzonetta *et al.* 2015; Cheng *et al.* 2016; Cheng *et al.* 2017). Psh1-mediated proteolysis of Cse4 is regulated by its interaction with Spt16, a component of the FACT (facilitates chromatin transcription/transactions) complex, and casein kinase 2 (CK2) (Deyter and Biggins 2014; Hewawasam *et al.* 2014). Even though Psh1 interacts with the CENP-A targeting domain (CATD) and ubiquitinates lysine (K) residues (K131, K155, K163, and K172) in the C-terminus of Cse4 (Hewawasam *et al.* 2010; Ranjitkar *et al.* 2010), several observations

Copyright © 2018 Ohkuni *et al.*

doi: <https://doi.org/10.1534/g3.117.300419>

Manuscript received November 7, 2017; accepted for publication February 3, 2018; published Early Online March 6, 2018.

*To whom correspondence should be addressed: Munira A. Basrai, Ph.D., Genetics Branch, Center for Cancer Research, National Cancer Institute, National Institutes of Health, 41 Medlars Drive, Room B624, Bethesda, MD 20892, E-mail: basraim@nih.gov

■ **Table 1** *S. cerevisiae* stains used in this study

Strains	Parent	Genotype	Reference
BY4741		<i>MATα his3Δ1 leu2Δ0 met15Δ0 ura3Δ0</i>	Open Biosystems
BY4742		<i>MATα his3Δ1 leu2Δ0 lys2Δ0 ura3Δ0</i>	Open Biosystems
YMB9470	BY4741/BY4742	<i>MATα cse4Δ::kanMX6 [pRS415-6His-3HA-CSE4]</i>	This study
YMB9471	BY4741/BY4742	<i>MATα cse4Δ::kanMX6 psh1Δ::kanMX6 [pRS415-6His-3HA-CSE4]</i>	This study
YMB9472	BY4741/BY4742	<i>MATα cse4Δ::kanMX6 slx5Δ::kanMX6 [pRS415-6His-3HA-CSE4]</i>	This study
YMB9547	BY4741/BY4742	<i>MATα cse4Δ::kanMX6 [pRS415-6His-3HA-cse4 K65R]</i>	This study
YMB9548	BY4741/BY4742	<i>MATα cse4Δ::kanMX6 psh1Δ::kanMX6 [pRS415-6His-3HA-cse4 K65R]</i>	This study
YMB9549	BY4741/BY4742	<i>MATα cse4Δ::kanMX6 slx5Δ::kanMX6 [pRS415-6His-3HA-cse4 K65R]</i>	This study
YMB9694	BY4741	<i>MATα SLX5-Myc::kanMX6</i>	This study
YPH1018		<i>MATα ura3-52 lys2-801 ade2-101 trp1Δ63 his3Δ200 leu2Δ1 CFIII (CEN3L.YPH278) HIS3 SUP11</i>	P. Hieter

support an important role of the N-terminus of Cse4 for regulating its ubiquitin-mediated proteolysis. For example, ubiquitination of *cse4* Δ 129 (a deletion of the entire N-terminus of Cse4) is barely detectable (Au *et al.* 2013). The stability of *cse4* KC, where all K in the N-terminus of Cse4 are mutated to arginine, is at least three-fold higher than that of wild-type Cse4 (Au *et al.* 2013). Furthermore, the stability of *cse4* KC is at least four-fold higher than that of *cse4* CK, where all K in the C-terminus of Cse4 are mutated to arginine (Au *et al.* 2013). Proteolysis defects in N-terminus Cse4 mutants contribute to chromosome loss, as strains expressing *cse4* KC exhibit a four-fold increase in chromosome segregation defects when compared to *cse4* CK strains (Au *et al.* 2013). These results indicate that ubiquitination and interaction of Psh1 with the C-terminus of Cse4 is not sufficient for Cse4 ubiquitin-mediated proteolysis. Studies with fission yeast have also shown that the N-terminus of Cnp1 mediates ubiquitin-mediated proteolysis of Cnp1 to prevent its mislocalization to non-centromeric chromatin (Gonzalez *et al.* 2014).

In addition to ubiquitination, we have recently reported that Cse4 is sumoylated by the small ubiquitin-related modifier (SUMO) E3 ligases Siz1 and Siz2 and that SUMO modification of Cse4 regulates its proteolysis (Ohkuni *et al.* 2016). We showed that *slx5* Δ strains exhibit defects in Cse4 proteolysis and localization that are independent of Psh1. Slx5 is a SUMO-targeted ubiquitin ligase which regulates many substrates with diverse biological functions such as transcription and maintaining genome stability. Slx5 associates with centromeric chromatin, and *slx5* Δ strains exhibit aneuploidy, spindle mispositioning, and aberrant spindle kinetics (van de Pasch *et al.* 2013). Given the multiplicity of Slx5 substrates, it is possible that the defect in Cse4 proteolysis in *slx5* Δ strains may be indirect due to defects in post-translational modifications of other substrates. Hence, we sought to identify sumoylation sites in the N-terminus of Cse4 and investigated

how the interaction of Slx5 with sumoylated Cse4 regulates its proteolysis and localization. Here we report the identification of K65 in Cse4 as a site that regulates sumoylation and show that Slx5-mediated ubiquitination of Cse4 K65 prevents its mislocalization to non-centromeric regions for genome stability.

MATERIALS AND METHODS

Yeast strains and plasmids

Table 1 and 2 describe the genotype of yeast strains and plasmids used for this study, respectively. Yeast cells were grown in rich (YPD: 1% yeast extract, 2% bacto-peptone, 2% glucose) or synthetic complete (SC) media containing 2% glucose, or 2% raffinose, or 2% raffinose + 2% galactose.

Cell lysate preparation for pull down assays and coimmunoprecipitation (co-IP)

For pull down assays and immunoprecipitation, cell lysates were prepared as follows. 50 OD₆₀₀ of logarithmically growing cells were pelleted, rinsed with sterile water, and suspended in 0.5 ml of guanidine buffer (0.1 M Tris-HCl at pH 8.0, 6.0 M guanidine chloride, 0.5 M NaCl) for sumoylation assay, or Ub lysis buffer (20 mM Na₂HPO₄, 20 mM NaH₂PO₄, 50 mM NaF, 5 mM tetra-sodium pyrophosphate, 10 mM beta-glycerophosphate, 2 mM EDTA, 1 mM DTT, 1% NP-40, 1 mM phenylmethylsulfonyl fluoride (PMSF), 5 mM N-ethylmaleimide (NEM), 1x protease inhibitor cocktail (Sigma, P8215)) for ubiquitin pull down assay, or IP lysis buffer (50 mM Tris-HCl at pH 8.0, 5 mM EDTA, 1% TritonX-100, 150 mM NaCl, 50 mM NaF, 10 mM β -glycerophosphate, 1 mM PMSF, 1x protease inhibitor cocktail) for coimmunoprecipitation. Cells were homogenized with 0.5 mm diameter glass beads or Matrix C (MP Biomedicals)

■ **Table 2** Plasmids used in this study

Plasmid	Relevant characteristics	Reference
pYES2	Vector (pGAL, 2 μ , URA3)	(Boeckmann <i>et al.</i> 2013)
pMB433	Vector (p426-pGAL1, 2 μ , URA3)	(Mumberg <i>et al.</i> 1994)
pMB1344	pYES2-pGAL-8His-HA-cse4 16KR (2 μ , URA3)	(Ohkuni <i>et al.</i> 2016)
pMB1345	pYES2-pGAL-8His-HA-CSE4 (2 μ , URA3)	(Ohkuni <i>et al.</i> 2016)
pMB1458	pMB433-pGAL-6His-3HA-CSE4 (2 μ , URA3)	(Au <i>et al.</i> 2013)
pMB1597	pMB433-pGAL-3HA-CSE4 (2 μ , URA3)	(Ohkuni <i>et al.</i> 2016)
pMB1725	pRS415-6His-3HA-CSE4 (CEN, LEU2)	This study
pMB1749	pRS415-6His-3HA-cse4 K65R (CEN, LEU2)	This study
pMB1762	pYES2-pGAL-8His-HA-cse4 K65R (2 μ , URA3)	This study
pMB1791	pMB433-pGAL-6His-3HA-cse4 K65R (2 μ , URA3)	This study
pMB1814	pMB433-pGAL-3HA-cse4 K65R (2 μ , URA3)	This study

using a bead beater (MP Biomedicals, FastPrep-24 5G). Cell lysates were clarified by centrifugation at 6,000 rpm for 5 min and protein concentration was determined using a DC protein assay kit (Bio-Rad). Samples containing equal amounts of protein were brought to a total volume of 1 ml with appropriate buffer.

Sumoylation assay

In vivo sumoylation was assayed in crude yeast extracts using Ni-NTA agarose beads to pull down His-HA-tagged Cse4 as described previously (Ohkuni *et al.* 2015). Cell lysates were incubated with 100 μ l of Ni-NTA superflow beads (Qiagen, 30430) overnight at 4°. After being washed with guanidine buffer one time and with breaking buffer (0.1 M Tris-HCl at pH 8.0, 20% glycerol, 1 mM PMSF) four times, beads were incubated with 2x Laemmli buffer including imidazole at 100° for 10 min. The protein samples were analyzed by SDS-PAGE and Western Blotting.

Ubiquitin pull down assay

Ubiquitin-pull down assay was performed as described previously (Au *et al.* 2013). Cell lysates were incubated with 25 μ l of tandem ubiquitin-binding entities Agarose-TUBE1 (LifeSensors, Inc. UM401) overnight at 4°. After being washed with TBS-T (20 mM Tris-HCl at pH 7.5, 150 mM NaCl, 0.1% Tween20) three times, beads were incubated with 2x Laemmli buffer at 100° for 5 min. The protein samples were analyzed by SDS-PAGE and Western Blotting.

Coimmunoprecipitation (Co-IP)

Cell lysates were incubated with 25 μ l of Anti-HA-Agarose antibody (Sigma, A2095) overnight at 4°. After being washed with IP lysis buffer three times, beads were incubated with 2x Laemmli buffer at 100° for 5 min. The protein samples were analyzed by SDS-PAGE and Western Blotting.

Protein stability assay

Protein stability assays were performed as described previously (Ohkuni *et al.* 2016). Logarithmically growing cells in YPD were treated with cycloheximide (CHX) (20 μ g/ml). Protein extracts were prepared from cells at the indicated time points and levels of Cse4 were quantitated by western blot analysis. Multiple independent measurements were made, and means are given on the applicable figures \pm the standard error of the mean with the number of replicates given in parentheses. Statistical significance was assessed by one-way ANOVA ($P = 0.0075$) with selected pairwise *post hoc* tests. Bonferroni correction was applied to adjust P values for multiple comparisons.

SDS-PAGE and Western Blotting

SDS-PAGE was performed using 4–12% Bis-Tris gels (Novex). After running the gels, proteins were transferred onto nitrocellulose membrane (VitaScientific, DBOC80014). Western blotting was performed according to a standard protocol. SuperSignal West Pico Chemiluminescent Substrate (Thermo Scientific, 34078), or SuperSignal West Pico PLUS Chemiluminescent Substrate (Thermo Scientific, 34580), or One Component Chemiluminescent Substrate (Rockland, UniGlow-0100) was used for the detection. Protein levels were quantified using Gene Tools software (version 3.8.8.0) from SynGene (Frederick, MD) or Image Lab software (version 6.0.0) from Bio-Rad Laboratories, Inc (Hercules, CA). Antibodies were as follows: anti-HA (12CA5) mouse (Roche, 11583816001), anti-HA rabbit (Sigma, H6908), anti-c-Myc (A-14) (Santa Cruz Biotechnology, sc-789), anti-Smt3 (y-84) (Santa Cruz Biotechnology, sc-28649), and anti-Tub2 antibodies (Basrai labora-

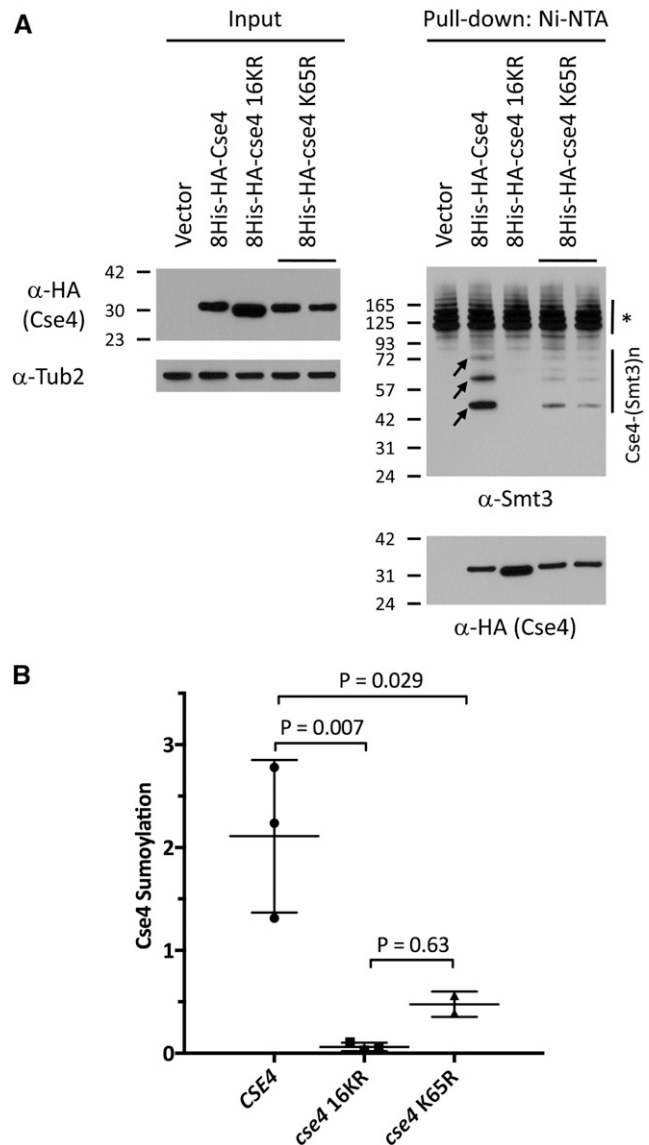


Figure 1 Lysine 65 is a target of Cse4 sumoylation. (A) Wild-type strain (BY4741) transformed with vector (pYES2), *pGAL-8His-HA-CSE4* (pMB1345), *pGAL-8His-HA-cse4 16KR* (pMB1344), or *pGAL-8His-HA-cse4 K65R* (pMB1762) was grown in raffinose/galactose (2%) for 4 hr to induce expression of Cse4. Sumoylation of 8His-HA-Cse4 and non-modified 8His-HA-Cse4 was assayed using protein extracts after pull down on Ni-NTA beads followed by western blot analysis with anti-Smt3 and anti-HA (Cse4) antibodies, respectively. At least three high molecular weight bands of 8His-HA-Cse4 (arrows) were detected. Input samples were analyzed using anti-HA (Cse4) and anti-Tub2 antibodies served as loading control for input. Asterisk shows nonspecific sumoylated proteins that bind to beads. (B) Quantitation of sumoylation in arbitrary density units (normalized to non-modified Cse4 probed by anti-HA in pull down sample) determined in multiple experiments. Statistical significance was assessed by one-way ANOVA ($P = 0.007$) followed by all possible pairwise comparisons of the means with Bonferroni correction. Error bars indicate standard deviation from the mean.

tory). Anti-HA was used at a dilution from 1:1000 to 1:5000, and anti-c-Myc, anti-Smt3, and anti-Tub2 were used at a dilution from 1:3000 to 1:5000. Secondary antibodies were ECL Mouse IgG,

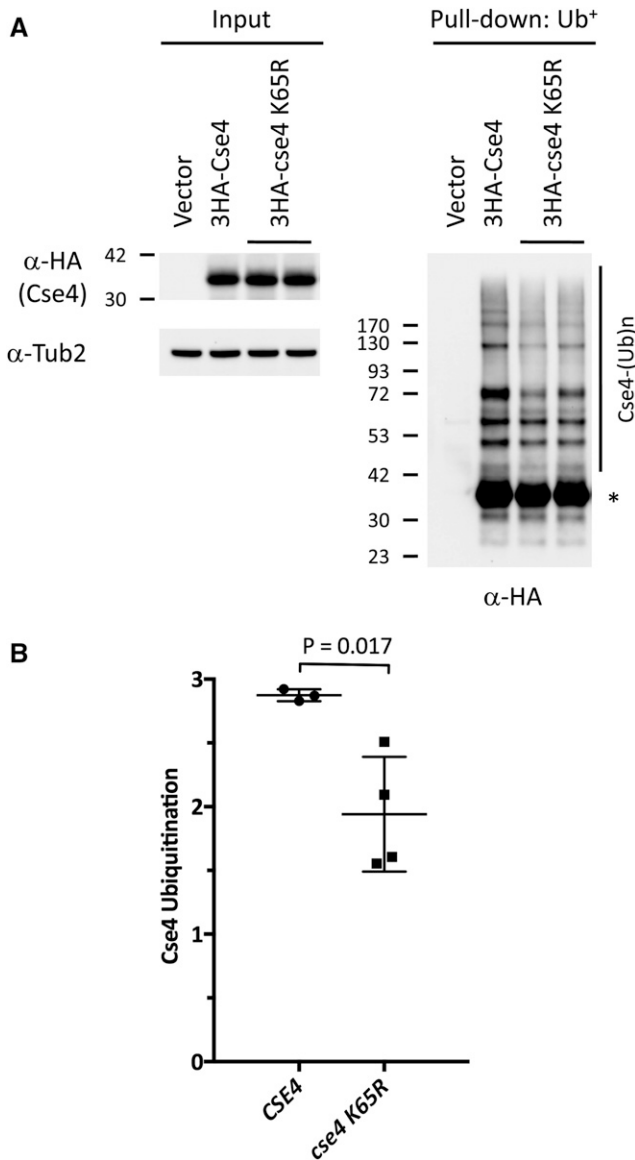


Figure 2 Cse4 ubiquitination is reduced in a *cse4* K65R mutant. (A) Protein extracts were prepared from wild-type strain (BY4741) transformed with vector (pMB433), *pGAL-3HA-CSE4* (pMB1458), or *pGAL-3HA-cse4 K65R* (pMB1791) grown in raffinose/galactose (2%) for 4 hr to induce expression of Cse4. Agarose-TUBE1 was used to pull down tandem ubiquitin binding entities and ubiquitination levels of Cse4 were detected by western blot analysis with anti-HA antibody. Input samples were analyzed using anti-HA (Cse4) and anti-Tub2 antibodies. Asterisk shows non-modified Cse4. (B) Quantitation of ubiquitination in arbitrary density units (normalized to levels of Cse4 in input) was determined in three independent trials (with additional replicates for 3HA-cse4 K65R). Statistical significance was assessed by unpaired t-test. Error bars show standard deviation from the mean.

HRP-linked whole Ab (GE Healthcare Life Sciences, NA931V) or ECL Rabbit IgG, HRP-linked whole Ab (GE Healthcare Life Sciences, NA934V) at 1:5000 dilution.

Chromosome spreads

Chromosome spreads were performed as described previously (Crotti and Basrai 2004; Collins *et al.* 2004) with some modifications. Cells

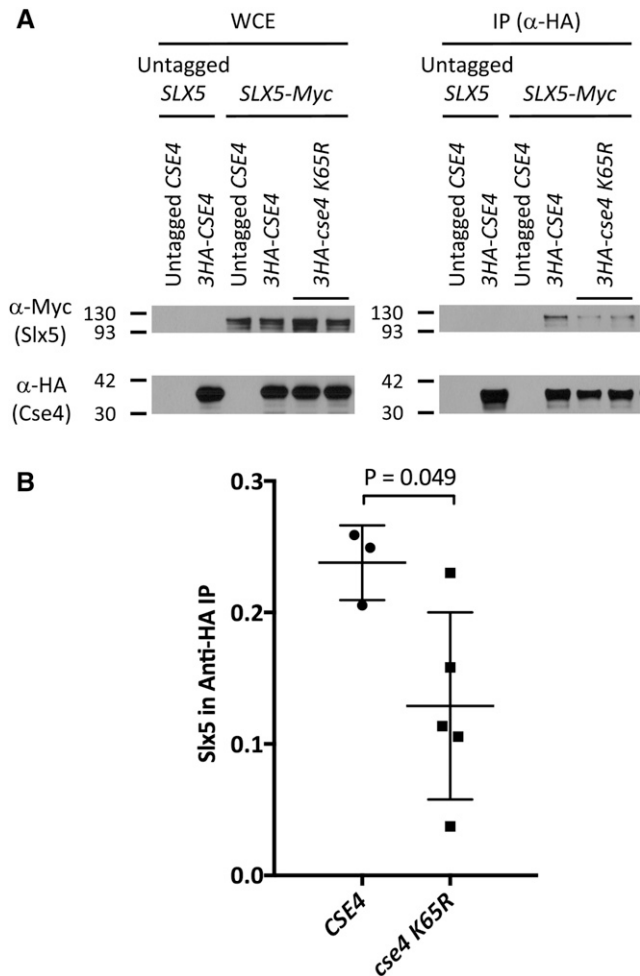


Figure 3 K65R mutation in Cse4 contributes to reduced interaction with Slx5. (A) Protein extracts were prepared from the indicated strains grown in raffinose/galactose (2%) for 4 hr to induce expression of Cse4 and incubated with anti-HA agarose antibody. Samples were resolved by SDS-PAGE and levels of Slx5 and Cse4 were detected by western blot analysis with anti-Myc and anti-HA antibodies, respectively. Isogenic yeast strains were: untagged (BY4741), or Slx5-Myc (YMB9694) strain transformed with vector (pMB433), *pGAL-3HA-CSE4* (pMB1458), or *pGAL-3HA-cse4 K65R* (pMB1791). (B) Levels of Slx5 (α -Myc, IP) after immunoprecipitation of 3HA-Cse4 were quantified in arbitrary density units after normalization to Cse4 levels in the IP (α -HA, IP) in three independent experiments (with additional replicates for 3HA-cse4 K65R). Statistical significance of the normalized values was assessed by unpaired t-test. Error bars show standard deviation from the mean.

were grown in YPD logarithmically. 16B12 Mouse anti-HA antibody (Covance, Babco; MMS-101P) was used as primary antibody at 1:2500 dilution. Cy3 conjugated Goat anti mouse (Jackson ImmunoResearch Laboratories, Inc., 115165003) was used as secondary antibody at 1:5000 dilution. DNA was visualized by DAPI (4',6-diamidino-2-phenylindole) staining (1 μ g/ml in phosphate-buffered saline) mounted in antifade mountant (Molecular Probes, P36935). Cells were examined under an Axioskop 2 (Zeiss) fluorescence microscope equipped with a Plan-APOCHROMAT 100X (Zeiss) oil immersion lens. Image acquisition and processing were performed with the IP Lab version 3.9.9 r3 software (Scanalytics, Inc.).

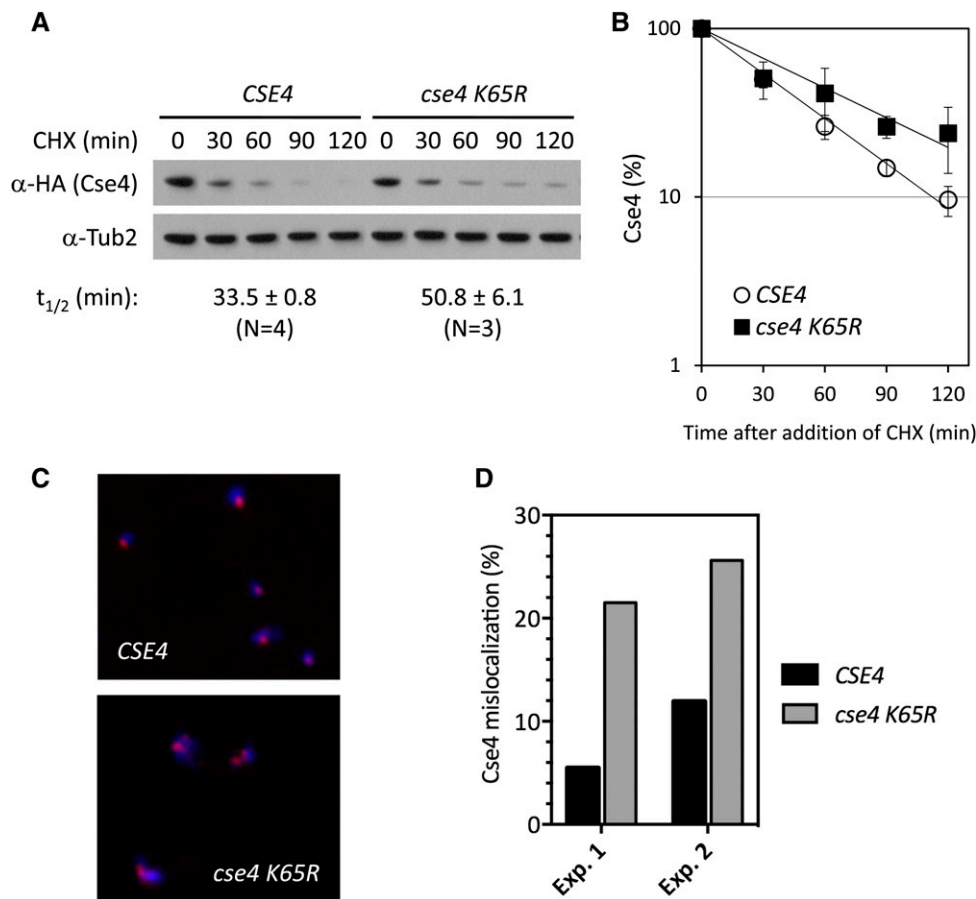


Figure 4 Sumoylation of Cse4 K65 regulates its proteolysis and localization under normal physiological conditions. (A) Protein extracts from CSE4 (YMB9470) or *cse4* K65R (YMB9547) strain were prepared using logarithmically growing cells, treated with CHX (20 μ g/ml) for various time points. Blots were probed with anti-HA (Cse4) or anti-Tub2 (loading control) antibody. A representative blot is shown. Cse4 protein half-life ($t_{1/2}$) is reported as the mean \pm SEM of multiple biological repeats. The difference in $t_{1/2}$ is statistically significant ($P = 0.013$). See materials and methods for details. (B) Kinetics of turnover. The graph shows the percentage of Cse4 signals normalized to Tub2 at the indicated time points in wild-type and *cse4* K65R mutant. Error bars indicate standard deviations of the means. (C) Chromosome spreads of logarithmically-grown wild-type (YMB9470) or *cse4* K65R (YMB9547) cells. DAPI (blue) and α -HA (red) staining were used to visualize DNA and Cse4 localization, respectively. In wild-type strains, Cse4 is predominantly localized to one to two kinetochore clusters. In mutant strains, mislocalization of Cse4 is observed as multiple foci or diffused localization throughout the nucleus. (D)

Quantification of Cse4 mislocalization in two independent experiments. The increased mislocalization observed for the *cse4* K65R strain was highly significant ($P < 0.001$) in both biological replicates (Chi-square test, $N = 237, 237$ and $N = 251, 281$ for wild-type and *cse4* K65R, respectively in replicate 1 and replicate 2).

Chromosome loss assay

Chromosome loss assays were performed as described previously (Spencer *et al.* 1990; Au *et al.* 2008). Briefly, strains containing a non-essential reporter chromosome were plated on synthetic defined medium with limiting adenine plus 2% galactose/raffinose and incubated at 30° for 5 days. Loss of the reporter chromosome results in red sectors in an otherwise a white colony. Colonies that are at least half red indicate loss of the reporter chromosome in the first cell division. At least 2,500 colonies were assayed from three individual transformants for each strain.

Data availability

All strains and plasmids are available upon request. The authors state that all data necessary for confirming the conclusions presented in the article are represented fully within the article.

RESULTS

Cse4 K65 is a target of sumoylation

The consensus motif Ψ -K-x-D/E (Ψ is a hydrophobic residue, K is the lysine to be conjugated to SUMO, x is any amino acid, D or E is an acidic residue) is frequently found in sumoylated substrates (Sampson *et al.* 2001; Rodriguez *et al.* 2001; Bernier-Villamor *et al.* 2002). We identified lysine (K) 65 (64-SKSD-67) in the N-terminus of Cse4 and

K215/K216 (214-MKKD-217) in the C-terminus of Cse4 as potential sumoylation sites. Given the importance of the Cse4 N-terminus in ubiquitination and proteolysis (Au *et al.* 2013), we examined whether Cse4 K65 is sumoylated *in vivo* and further characterized its role in regulating proteolysis and localization of Cse4. We assayed the sumoylation status of transiently overexpressed 8His-Hemagglutinin (HA)-CSE4, 8His-HA-*cse4* 16KR (all K mutated to R), or 8His-HA-*cse4* K65R (K65 mutated to R65). Pull down experiments were done using Ni-NTA agarose beads, and SUMO-modified Cse4 species were detected using anti-Smt3 antibody (Figure 1). At least three distinct sumoylated Cse4 species were observed in wild-type cells (Figure 1A, denoted by arrows), as previously described (Ohkuni *et al.* 2016). These SUMO-modified species were not detected in strains expressing vector alone or 8His-HA-*cse4* 16KR. Strains expressing 8His-HA-*cse4* K65R showed greatly reduced levels of Cse4 sumoylation even though similar levels of Cse4 and *cse4* K65R were pulled down (Figure 1A). Significant reduction in sumoylation status was observed for *cse4* K65R when compared to Cse4 ($P = 0.029$), but not between *cse4* K65R and *cse4* 16KR ($P = 0.63$) (Figure 1B). Taken together, our results suggest that Cse4 K65 is a target of sumoylation.

Cse4 ubiquitination is reduced in a *cse4* K65R mutant

The reduced sumoylation of *cse4* K65R prompted us to investigate if sumoylation of Cse4 K65 affects the ubiquitination of Cse4. We assayed

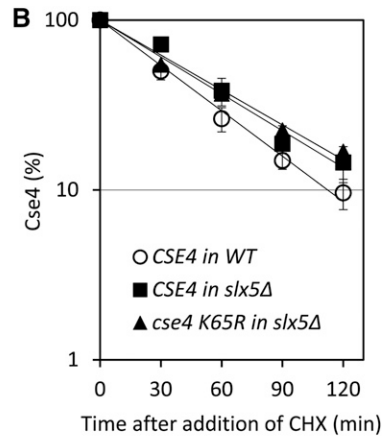
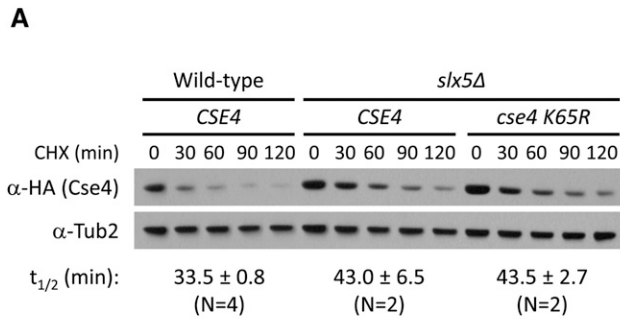
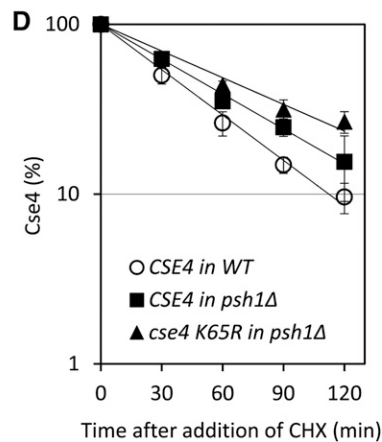
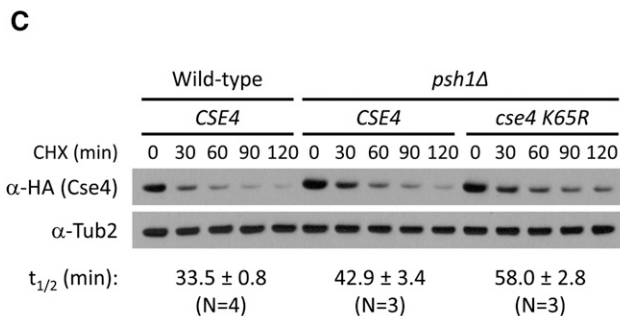


Figure 5 Cse4 K65 sumoylation regulates its proteolysis by Slx5 in a Psh1-independent manner. (A and C) Protein extracts were prepared using logarithmically growing cells, treated with CHX (20 μ g/ml) for various time points. Blots were probed with anti-HA (Cse4) or anti-Tub2 (loading control) antibody. A representative blot is shown. Cse4 protein half-lives ($t_{1/2}$) are reported as the mean \pm SEM of multiple biological repeats. The difference in $t_{1/2}$ between wild-type Cse4 and *cse4* K65R is statistically significant in the *psh1Δ* strain ($P = 0.043$) but not in the *slx5Δ* strain ($P > 0.99$). See materials and methods for details. (B and D) Kinetics of turnover. The graph shows the percentage of Cse4 signals normalized to Tub2 at the indicated time points in the indicated strains. Error bars indicate standard deviations of the means. (A) Strains analyzed were YMB9470 (*CSE4*), YMB9472 (*CSE4 slx5Δ*), and YMB9549 (*cse4 K65R slx5Δ*). (C) Strains analyzed were YMB9470 (*CSE4*), YMB9471 (*CSE4 psh1Δ*), and YMB9548 (*cse4 K65R psh1Δ*).



the level of ubiquitinated Cse4 by performing an affinity pull down assay using agarose with tandem ubiquitin-binding entities (Ub⁺) from strains transiently overexpressed either *3HA-CSE4* or *3HA-cse4 K65R* (Figure 2). A faster migrating species (Figure 2A, asterisk) was observed in all strains expressing Cse4. These faster migrating Cse4 species were similar in size to that in the input lanes. These species were also observed in experiments with *cse4 16KR* mutant (Au *et al.* 2013). Since *cse4 16KR* cannot be ubiquitinated, this faster migrating species represents unmodified Cse4, which likely interacts with ubiquitinated proteins such as canonical histones. Ubiquitinated Cse4 was detected as a laddering pattern in wild-type cells expressing *3HA-CSE4* but was absent in strains with vector alone (Figure 2A). However, reduced levels of ubiquitination were observed in strains expressing *3HA-cse4 K65R* (Figure 2, A and B). The lack of a drastic reduction in the levels of ubiquitinated *cse4 K65R* is not surprising given that the other fifteen lysines can still be ubiquitinated. These results show that Cse4 K65 contributes to Cse4 ubiquitination.

Cse4 K65 is regulated by STUbL Slx5

We have previously shown that STUbL Slx5 interacts with Cse4 and promotes its ubiquitin-mediated proteolysis (Ohkuni *et al.* 2016). Slx5 contains SUMO-interacting motifs (SIMs), which interact with sumoylated substrates (Xie *et al.* 2007; Xie *et al.* 2010). We reasoned that reduced sumoylation and ubiquitination of *cse4 K65R* may be due to reduced interaction of *cse4 K65R* with Slx5. Co-immunoprecipitation (Co-IP) experiments were done using strains co-expressing either *3HA-CSE4* or *3HA-cse4 K65R* with *SLX5-Myc* (Figure 3). Consistent with our previous results

(Ohkuni *et al.* 2016), immunoprecipitation with anti-HA showed an interaction between wild-type Cse4 and Slx5 (Figure 3A). In contrast, reduced interaction was observed between *cse4 K65R* and Slx5 (Figure 3, A and B). Hence, we conclude that sumoylation of Cse4 K65 contributes to its interaction with Slx5.

Sumoylation of Cse4 K65 regulates its proteolysis and localization under normal physiological conditions

To determine if defects in sumoylation and ubiquitination of *cse4 K65R* contribute to a defect in proteolysis of *cse4 K65R*, we performed protein stability assays using cells expressing either *CSE4* or *cse4 K65R* from its endogenous promoter. Cells were grown logarithmically and then treated with cycloheximide (CHX) to inhibit protein translation. Whole cell extracts were assayed for Cse4 levels at different times after CHX treatment. Cse4 was rapidly degraded ($t_{1/2} = 33.5 \pm 0.8$ min) in wild-type strains, whereas *cse4 K65R* was modestly stabilized ($t_{1/2} = 50.8 \pm 6.1$ min) (Figure 4, A and B). These observations indicate that K65 of Cse4 regulates its proteolysis.

Previous studies have shown that defects in ubiquitin-mediated proteolysis of Cse4 in *slx5Δ* and *psh1Δ* strains lead to mislocalization of Cse4 to non-centromeric regions under normal physiological conditions (Ohkuni *et al.* 2016). Therefore, we examined whether the increased stability observed for *cse4 K65R* expressed from its own promoter leads to mislocalization to non-centromeric regions. Chromosome spreads were used to visualize localization of chromatin-bound Cse4. In wild-type cells, Cse4 localization is usually restricted to one or two foci, corresponding to kinetochore clusters (Figure 4, C and D). In contrast, a higher incidence of multiple or diffuse *cse4 K65R* foci were observed under the same condition (Figure 4, C and D). We

conclude that ubiquitin-mediated proteolysis of Cse4 via sumoylation of K65 prevents its mislocalization to non-centromeric chromatin.

Sumoylation of Cse4 K65 is required for Slx5-mediated proteolysis independent of Psh1

Based on the reduced interaction of *cse4* K65R with Slx5 (Figure 3), we predicted that the stability of *cse4* K65R would not differ significantly from that of Cse4 in *slx5Δ* strains under normal physiological conditions. In agreement with previous results (Ohkuni *et al.* 2016), protein stability assays showed that Cse4 was more stable in the *slx5Δ* strain ($t_{1/2} = 43.0 \pm 6.5$ min) when compared to the wild-type strain ($t_{1/2} = 33.5 \pm 0.8$ min) (Figure 5, A and B). Consistent with our hypothesis, the stability of *cse4* K65R ($t_{1/2} = 43.5 \pm 2.7$ min) was not significantly different than that of Cse4 ($t_{1/2} = 43.0 \pm 6.5$ min) in the *slx5Δ* strain (Figure 5, A and B).

We next analyzed the stability of Cse4 using a *psh1Δ* strain. Protein stability assays showed that Cse4 was more stable in a *psh1Δ* strain ($t_{1/2} = 42.9 \pm 3.4$ min) compared to that observed in a wild-type strain ($t_{1/2} = 33.5 \pm 0.8$ min) under normal physiological conditions (Figure 5, C and D). The stability of *cse4* K65R ($t_{1/2} = 58.0 \pm 2.8$ min) was much higher than that of Cse4 ($t_{1/2} = 42.9 \pm 3.4$ min) in the *psh1Δ* strain (Figure 5, C and D). Hence, we conclude that Slx5-mediated proteolysis of Cse4 dependent on Cse4 K65 is independent of Psh1.

Sumoylation of Cse4 K65 regulates faithful chromosome segregation

To determine the physiological consequence of mislocalized *cse4* K65R on genome stability, we used a colony color assay to measure the loss of a nonessential reporter chromosome. Previous studies have shown that strains overexpressing *cse4* 16KR exhibit increased chromosome loss compared to *GAL-CSE4* (Au *et al.* 2008). However, no measurable increase in chromosome loss was observed in cells expressing *cse4* 16KR from its native promoter (Au *et al.* 2008). Therefore, we measured chromosome loss using wild-type strain transformed with vector alone, *GAL-CSE4* and *GAL-cse4* K65R. The *GAL-cse4* K65R strain exhibits 1.6-fold higher chromosome loss compared to *GAL-CSE4* strains (Figure 6, $P < 0.001$). These results show that sumoylation of Cse4 K65 regulates faithful chromosome segregation.

DISCUSSION

We have identified Cse4 K65 as a site that regulates its sumoylation and showed that Cse4 sumoylation regulates its ubiquitin-mediated proteolysis and localization for genome stability. Strains expressing *cse4* K65R exhibit defects in Cse4 sumoylation and ubiquitination and show reduced interaction of *cse4* K65R with Slx5. Defects in proteolysis and mislocalization of *cse4* K65R to non-centromeric chromatin were observed under normal physiological conditions. The increased stability of *cse4* K65R in *psh1Δ* strains but not in *slx5Δ* strains indicates that sumoylation of Cse4 K65 regulates Slx5-mediated proteolysis, independently of Psh1. We propose that sumoylation of Cse4 K65 promotes its interaction with Slx5, and this is required for Slx5-mediated proteolysis of Cse4 to prevent its mislocalization for faithful chromosome segregation.

Reduced Cse4 sumoylation observed for the *cse4* K65R mutant supports the role of Cse4 K65 as a sumoylation site in the N-terminus of Cse4. The defects in sumoylation and ubiquitination of *cse4* K65R are not as severe as that observed for *cse4* 16KR. Furthermore, ubiquitination defects of Cse4 are more pronounced in *slx5Δ* strains (Ohkuni *et al.* 2016), compared to that observed for *cse4* K65R. These results suggest that sumoylation and ubiquitination of other lysine residues of Cse4 or other substrates of Slx5 also contribute to proteolysis of Cse4.

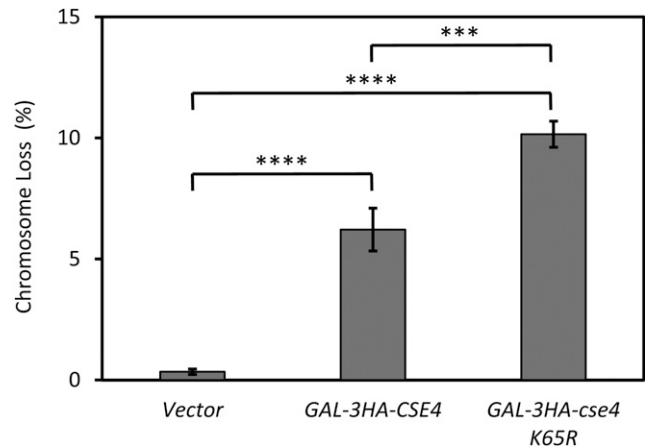


Figure 6 *GAL-cse4* K65R strains exhibit increased chromosome loss. (A) YPH1018 transformed with vector (pMB433), *GAL-3HA-CSE4* (pMB1597), or *GAL-3HA-cse4* K65R (pMB1814) were plated on SC -URA with limiting adenine plus 2% galactose/raffinose and incubated for 5 days at 30 °. Chromosome loss was determined by counting the number of colonies that show loss of the reporter chromosome in the first division and exhibit a half sector phenotype. Quantification of three independent transformants is shown. Statistical significance was assessed by one-way ANOVA ($P < 0.0001$) followed by all possible pairwise comparisons of the means with Bonferroni correction. ***, $P < 0.001$; ****, $P < 0.0001$.

Our results show that Cse4 K65 is required for Slx5-mediated proteolysis independent of Psh1. Several experimental findings support this conclusion: 1) reduced interaction of *cse4* K65R with Slx5, 2) no additional proteolysis defects of *cse4* K65R in *slx5Δ* strains, and 3) increased proteolysis defects of *cse4* K65R in *psh1Δ* strains. Our results are consistent with previous studies which showed ubiquitination of K131, K155, K163 and K172, but not K65 of Cse4, by Psh1 (Hewawasam *et al.* 2010).

Studies to date have described multiple E3 ligases including Psh1, Slx5, Ubr1, and Rcy1 (F-box protein in the SCF (Skp1-Cullin-F-box) complex) in the proteolysis of overexpressed Cse4 (Cheng *et al.* 2017). We note that the physiological consequence of defects in the Cse4 E3 ligases characterized to date is most apparent when Cse4 is overexpressed. We propose that this type of regulation ensures that levels of endogenously expressed Cse4 are maintained at a critical threshold for the essential role of Cse4 at centromeres.

In summary, our studies have identified and characterized the physiological role of Cse4 sumoylation. Cse4 K65 regulates ubiquitin-mediated proteolysis by Slx5 to prevent mislocalization of Cse4 and is itself a likely sumoylation target. Sumoylation of kinetochore proteins or proteins required for sister chromatid cohesion and spindle assembly checkpoint regulate faithful chromosome segregation (Eifler and Verteegaal 2015; Mukhopadhyay and Dasso 2017). Deregulation of sumoylation machinery causes severe defects in cell proliferation and genome stability and promotes tumorigenesis (Eifler and Verteegaal 2015; Seeler and Dejean 2017). Unlike Psh1, Slx5 is evolutionarily conserved and the mammalian ortholog RNF4 has been shown to regulate chromosome segregation (van de Pasch *et al.* 2013). Since ubiquitination and sumoylation prevent mislocalization of Cse4 for genome stability, it will be of interest to determine if these post-translational modifications of CENP-A also prevent its mislocalization to preserve genome stability in human cells.

ACKNOWLEDGMENTS

We would like to thank members of the Basrai laboratory for helpful discussions and comments on the manuscript. We gratefully acknowledge Mary Dasso and Oliver Kerscher for useful discussions.

This work was supported by the Intramural Research Program of the National Institutes of Health, National Cancer Institute to MAB.

Author contributions: K.O. designed the study, conducted all the experiments, analyzed the data, and wrote the manuscript. R.L.-M. contributed to sumoylation assays, J. W. performed some of the chromosome spreads experiments. W.C.A. generated plasmids and provided technical advice for biochemical assays. Y.T. made comments on the manuscript. R.E.B. performed statistical analyses and assisted with the writing of the manuscript. M.A.B. guided the project and contributed to the writing of the manuscript.

LITERATURE CITED

- Amato, A., T. Schillaci, L. Lentini, and A. Di Leonardo, 2009 CENPA overexpression promotes genome instability in pRb-depleted human cells. *Mol. Cancer* 8(1): 119. <https://doi.org/10.1186/1476-4598-8-119>
- Athwal, R. K., M. P. Walkiewicz, S. Baek, S. Fu, M. Bui *et al.*, 2015 CENP-A nucleosomes localize to transcription factor hotspots and subtelomeric sites in human cancer cells. *Epigenetics Chromatin* 8(1): 2. <https://doi.org/10.1186/1756-8935-8-2>
- Au, W. C., M. J. Crisp, S. Z. DeLuca, O. J. Rando, and M. A. Basrai, 2008 Altered dosage and mislocalization of histone H3 and Cse4p lead to chromosome loss in *Saccharomyces cerevisiae*. *Genetics* 179(1): 263–275. <https://doi.org/10.1534/genetics.108.088518>
- Au, W. C., A. R. Dawson, D. W. Rawson, S. B. Taylor, R. E. Baker *et al.*, 2013 A novel role of the N terminus of budding yeast histone H3 variant Cse4 in ubiquitin-mediated proteolysis. *Genetics* 194(2): 513–518. <https://doi.org/10.1534/genetics.113.149898>
- Bernier-Villamor, V., D. A. Sampson, M. J. Matunis, and C. D. Lima, 2002 Structural basis for E2-mediated SUMO conjugation revealed by a complex between ubiquitin-conjugating enzyme Ubc9 and RanGAP1. *Cell* 108(3): 345–356. [https://doi.org/10.1016/S0092-8674\(02\)00630-X](https://doi.org/10.1016/S0092-8674(02)00630-X)
- Boeckmann, L., Y. Takahashi, W. C. Au, P. K. Mishra, J. S. Choy *et al.*, 2013 Phosphorylation of centromeric histone H3 variant regulates chromosome segregation in *Saccharomyces cerevisiae*. *Mol. Biol. Cell* 24(12): 2034–2044. <https://doi.org/10.1091/mbc.E12-12-0893>
- Canzonetta, C., S. Vernarecci, M. Iuliani, C. Marracino, C. Belloni *et al.*, 2015 SAGA DUB-Ubp8 Deubiquitylates Centromeric Histone Variant Cse4. *G3 (Bethesda)* 6(2): 287–298. <https://doi.org/10.1534/g3.115.024877>
- Cheng, H., X. Bao, X. Gan, S. Luo, and H. Rao, 2017 Multiple E3s promote the degradation of histone H3 variant Cse4. *Sci. Rep.* 7(1): 8565. <https://doi.org/10.1038/s41598-017-08923-w>
- Cheng, H., X. Bao, and H. Rao, 2016 The F-box Protein Rcy1 Is Involved in the Degradation of Histone H3 Variant Cse4 and Genome Maintenance. *J. Biol. Chem.* 291(19): 10372–10377. <https://doi.org/10.1074/jbc.M115.701813>
- Collins, K. A., S. Furuyama, and S. Biggins, 2004 Proteolysis contributes to the exclusive centromere localization of the yeast Cse4/CENP-A histone H3 variant. *Curr. Biol.* 14(21): 1968–1972. <https://doi.org/10.1016/j.cub.2004.10.024>
- Crotti, L. B., and M. A. Basrai, 2004 Functional roles for evolutionarily conserved Spt4p at centromeres and heterochromatin in *Saccharomyces cerevisiae*. *EMBO J.* 23(8): 1804–1814. <https://doi.org/10.1038/sj.emboj.7600161>
- Deyter, G. M., and S. Biggins, 2014 The FACT complex interacts with the E3 ubiquitin ligase Psh1 to prevent ectopic localization of CENP-A. *Genes Dev.* 28(16): 1815–1826. <https://doi.org/10.1101/gad.243113.114>
- Eifler, K., and A. C. Vertegaal, 2015 SUMOylation-Mediated Regulation of Cell Cycle Progression and Cancer. *Trends Biochem. Sci.* 40(12): 779–793. <https://doi.org/10.1016/j.tibs.2015.09.006>
- Gonzalez, M., H. He, Q. Dong, S. Sun, and F. Li, 2014 Ectopic centromere nucleation by CENP-A in fission yeast. *Genetics* 198(4): 1433–1446. <https://doi.org/10.1534/genetics.114.171173>
- Heun, P., S. Erhardt, M. D. Blower, S. Weiss, A. D. Skora *et al.*, 2006 Mislocalization of the *Drosophila* centromere-specific histone CID promotes formation of functional ectopic kinetochores. *Dev. Cell* 10(3): 303–315. <https://doi.org/10.1016/j.devcel.2006.01.014>
- Hewawasam, G., M. Shivaraju, M. Mattingly, S. Venkatesh, S. Martin-Brown *et al.*, 2010 Psh1 is an E3 ubiquitin ligase that targets the centromeric histone variant Cse4. *Mol. Cell* 40(3): 444–454. <https://doi.org/10.1016/j.molcel.2010.10.014>
- Hewawasam, G. S., M. Mattingly, S. Venkatesh, Y. Zhang, L. Florens *et al.*, 2014 Phosphorylation by casein kinase 2 facilitates Psh1 protein-assisted degradation of Cse4 protein. *J. Biol. Chem.* 289(42): 29297–29309. <https://doi.org/10.1074/jbc.M114.580589>
- Hu, Z., G. Huang, A. Sadanandam, S. Gu, M. E. Lenburg *et al.*, 2010 The expression level of HJURP has an independent prognostic impact and predicts the sensitivity to radiotherapy in breast cancer. *Breast Cancer Res.* 12(2): R18. <https://doi.org/10.1186/bcr2487>
- Lacoste, N., A. Woolfe, H. Tachiwana, A. V. Garea, T. Barth *et al.*, 2014 Mislocalization of the centromeric histone variant CenH3/CENP-A in human cells depends on the chaperone DAXX. *Mol. Cell* 53(4): 631–644. <https://doi.org/10.1016/j.molcel.2014.01.018>
- Li, Y., Z. Zhu, S. Zhang, D. Yu, H. Yu *et al.*, 2011 ShRNA-targeted centromere protein A inhibits hepatocellular carcinoma growth. *PLoS One* 6(3): e17794. <https://doi.org/10.1371/journal.pone.0017794>
- Moreno-Moreno, O., M. Torras-Llort, and F. Azorin, 2006 Proteolysis restricts localization of CID, the centromere-specific histone H3 variant of *Drosophila*, to centromeres. *Nucleic Acids Res.* 34(21): 6247–6255. <https://doi.org/10.1093/nar/gkl902>
- Mukhopadhyay, D., and M. Dasso, 2017 The SUMO Pathway in Mitosis. *Adv. Exp. Med. Biol.* 963: 171–184. https://doi.org/10.1007/978-3-319-50044-7_10
- Mumberg, D., R. Muller, and M. Funk, 1994 Regulatable promoters of *Saccharomyces cerevisiae*: comparison of transcriptional activity and their use for heterologous expression. *Nucleic Acids Res.* 22(25): 5767–5768. <https://doi.org/10.1093/nar/22.25.5767>
- Ohkuni, K., R. Abdulle, and K. Kitagawa, 2014 Degradation of centromeric histone H3 variant Cse4 requires the Fpr3 peptidyl-prolyl cis-trans isomerase. *Genetics* 196(4): 1041–1045. <https://doi.org/10.1534/genetics.114.161224>
- Ohkuni, K., Y. Takahashi, and M. A. Basrai, 2015 Protein purification technique that allows detection of sumoylation and ubiquitination of budding yeast kinetochore proteins Ndc10 and Ndc80. *J. Vis. Exp.* (99): e52482. <https://doi.org/10.3791/52482>
- Ohkuni, K., Y. Takahashi, A. Fulp, J. Lawrimore, W. C. Au *et al.*, 2016 SUMO-Targeted Ubiquitin Ligase (STUbL) Slx5 regulates proteolysis of centromeric histone H3 variant Cse4 and prevents its mislocalization to euchromatin. *Mol. Biol. Cell* 27(9): 1500–1510. <https://doi.org/10.1091/mbc.E15-12-0827>
- Ranjitkar, P., M. O. Press, X. Yi, R. Baker, M. J. MacCoss *et al.*, 2010 An E3 ubiquitin ligase prevents ectopic localization of the centromeric histone H3 variant via the centromere targeting domain. *Mol. Cell* 40(3): 455–464. <https://doi.org/10.1016/j.molcel.2010.09.025>
- Rodriguez, M. S., C. Dargemont, and R. T. Hay, 2001 SUMO-1 conjugation in vivo requires both a consensus modification motif and nuclear targeting. *J. Biol. Chem.* 276(16): 12654–12659. <https://doi.org/10.1074/jbc.M009476200>
- Sampson, D. A., M. Wang, and M. J. Matunis, 2001 The small ubiquitin-like modifier-1 (SUMO-1) consensus sequence mediates Ubc9 binding and is essential for SUMO-1 modification. *J. Biol. Chem.* 276(24): 21664–21669. <https://doi.org/10.1074/jbc.M100006200>
- Seeler, J. S., and A. Dejean, 2017 SUMO and the robustness of cancer. *Nat. Rev. Cancer* 17(3): 184–197. <https://doi.org/10.1038/nrc.2016.143>
- Shrestha, R. L., G. S. Ahn, M. I. Staples, K. M. Sathyan, T. S. Karpova *et al.*, 2017 Mislocalization of centromeric histone H3 variant CENP-A contributes to chromosomal instability (CIN) in human cells. *Oncotarget* 8(29): 46781–46800. <https://doi.org/10.18632/oncotarget.18108>

- Spencer, F., S. L. Gerring, C. Connelly, and P. Hieter, 1990 Mitotic chromosome transmission fidelity mutants in *Saccharomyces cerevisiae*. *Genetics* 124(2): 237–249.
- Sun, X., P. L. Clermont, W. Jiao, C. D. Helgason, P. W. Gout *et al.*, 2016 Elevated expression of the centromere protein-A(CENP-A)-encoding gene as a prognostic and predictive biomarker in human cancers. *Int. J. Cancer* 139(4): 899–907. <https://doi.org/10.1002/ijc.30133>
- Tomonaga, T., K. Matsushita, S. Yamaguchi, T. Oohashi, H. Shimada *et al.*, 2003 Overexpression and mistargeting of centromere protein-A in human primary colorectal cancer. *Cancer Res.* 63(13): 3511–3516.
- van de Pasch, L. A., A. J. Miles, W. Nijenhuis, N. A. Brabers, D. van Leenen *et al.*, 2013 Centromere binding and a conserved role in chromosome stability for SUMO-dependent ubiquitin ligases. *PLoS One* 8(6): e65628. <https://doi.org/10.1371/journal.pone.0065628>
- Wu, Q., Y. M. Qian, X. L. Zhao, S. M. Wang, X. J. Feng *et al.*, 2012 Expression and prognostic significance of centromere protein A in human lung adenocarcinoma. *Lung Cancer* 77(2): 407–414. <https://doi.org/10.1016/j.lungcan.2012.04.007>
- Xie, Y., O. Kerscher, M. B. Kroetz, H. F. McConchie, P. Sung *et al.*, 2007 The yeast Hex3.Slx8 heterodimer is a ubiquitin ligase stimulated by substrate sumoylation. *J. Biol. Chem.* 282(47): 34176–34184. <https://doi.org/10.1074/jbc.M706025200>
- Xie, Y., E. M. Rubenstein, T. Matt, and M. Hochstrasser, 2010 SUMO-independent in vivo activity of a SUMO-targeted ubiquitin ligase toward a short-lived transcription factor. *Genes Dev.* 24(9): 893–903. <https://doi.org/10.1101/gad.1906510>

Communicating Editor: B. Andrews