

Presentations

10-9-2015

Ontogeny, Behavior, and Ecology of the Sea Turtle "Lost Years"

Kate L. Mansfield

Follow this and additional works at: <https://scholarworks.wm.edu/presentations>



Part of the [Marine Biology Commons](#), and the [Terrestrial and Aquatic Ecology Commons](#)

Recommended Citation

Mansfield, Kate L.. "Ontogeny, Behavior, and Ecology of the Sea Turtle "Lost Years"". 10-9-2015. VIMS 75th Anniversary Alumni Research Symposium.

This Presentation is brought to you for free and open access by W&M ScholarWorks. It has been accepted for inclusion in Presentations by an authorized administrator of W&M ScholarWorks. For more information, please contact scholarworks@wm.edu.

ONTOGENY, BEHAVIOR, AND ECOLOGY OF THE SEA TURTLE 'LOST YEARS'

KATE MANSFIELD, PH.D.

UNIVERSITY OF CENTRAL FLORIDA
MARINE TURTLE RESEARCH GROUP



K. Mansfield

OCTOBER 2015

THE IMPORTANCE OF (EVENTUALLY) IGNORING YOUR DOCTORAL ADVISOR...

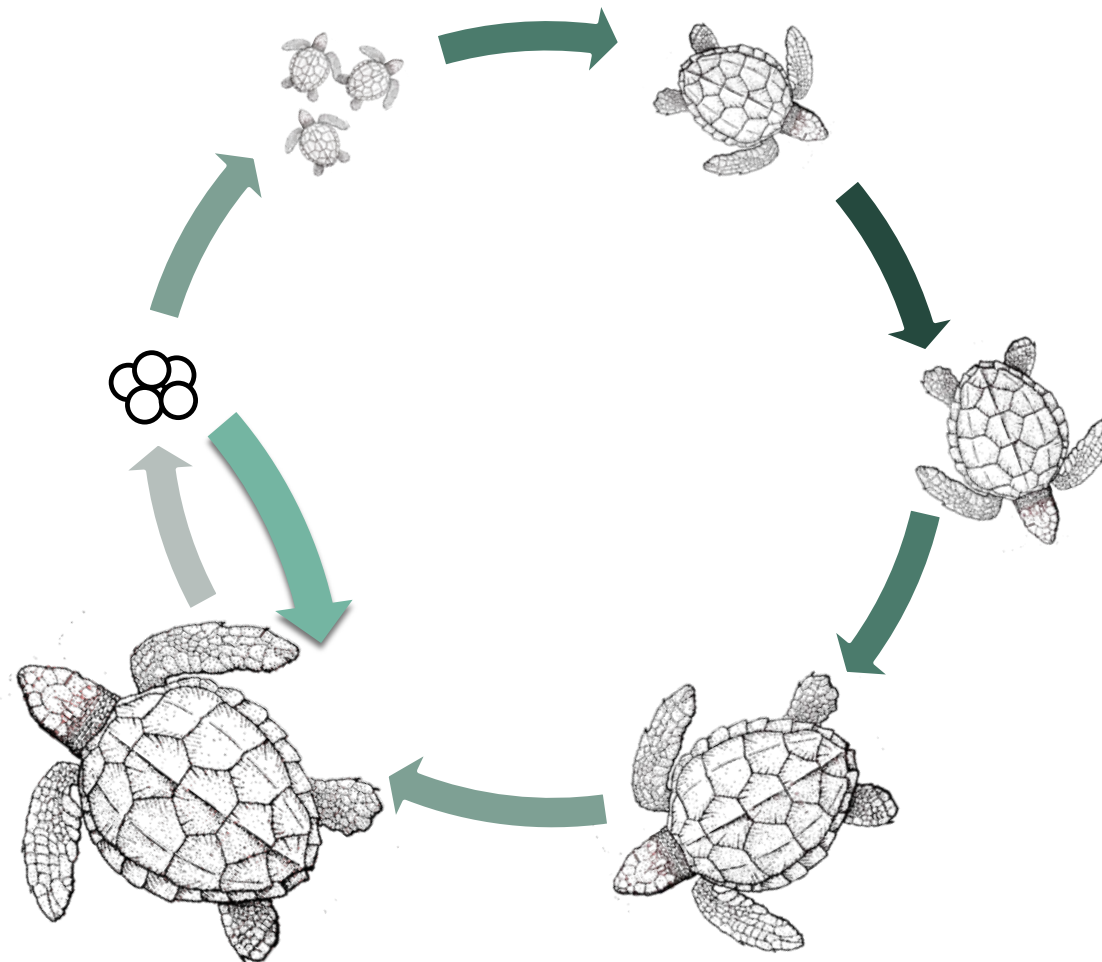
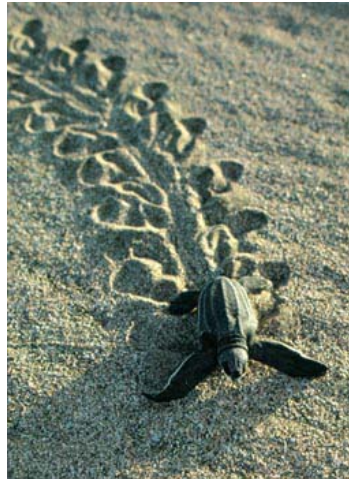
KATE MANSFIELD, PH.D.

UNIVERSITY OF CENTRAL FLORIDA
MARINE TURTLE RESEARCH GROUP



OCTOBER 2015

THE SEA TURTLE LIFE CYCLE



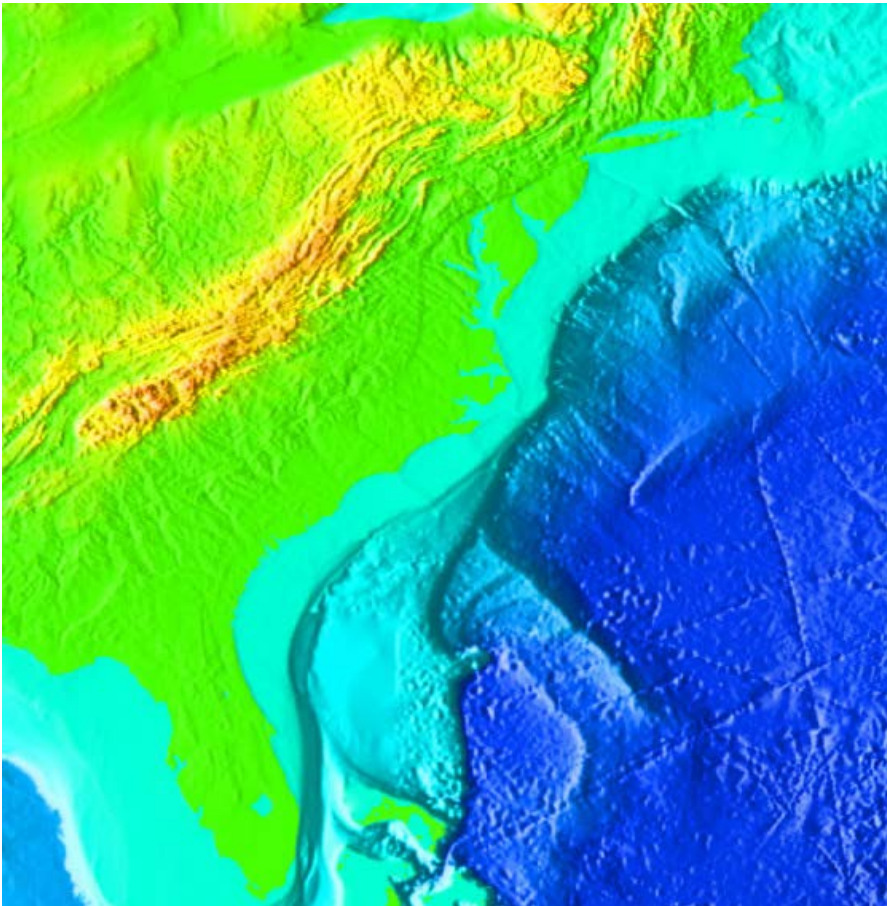
Sources: K. Mansfield; K. Phillips; MTRG; Mansfield and Putman 2013

THE SEA TURTLE 'LOST YEARS'



Photos: K. Phillips; G. Stahelin

HYPOTHESES

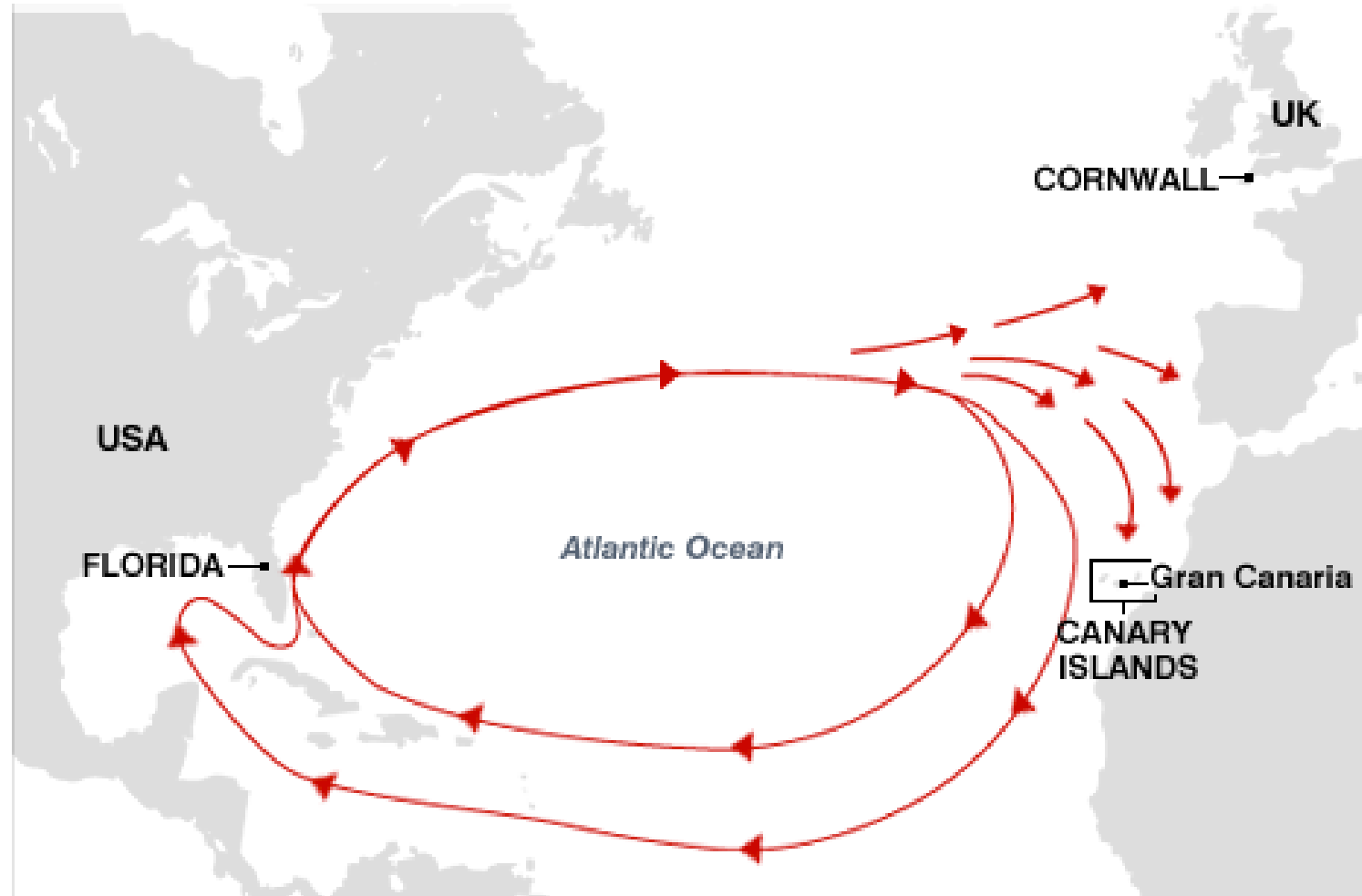


HYPOTHESES



Photos: K. Mansfield, Miami Herald; J. Abernethy

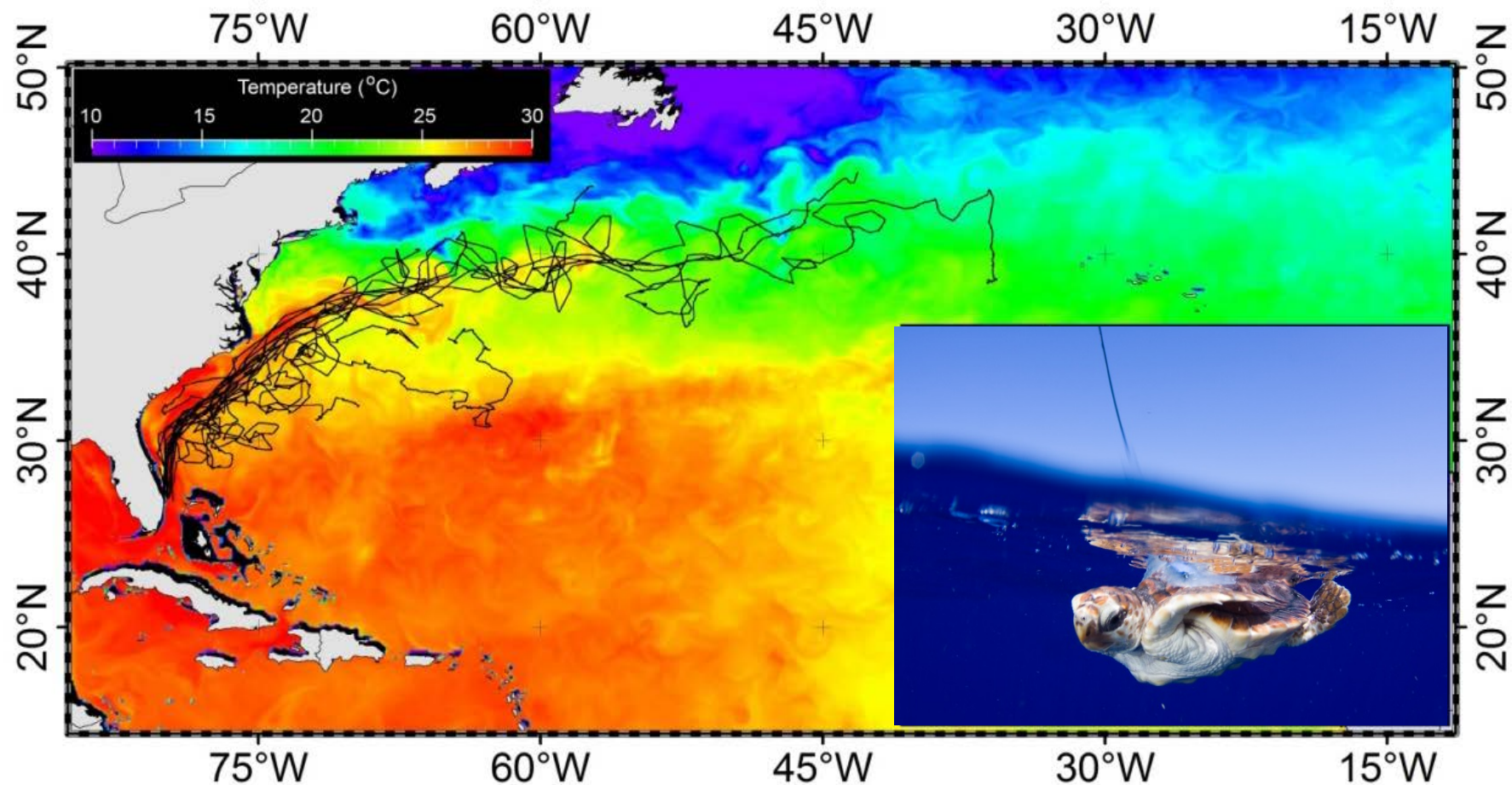
HYPOTHESES



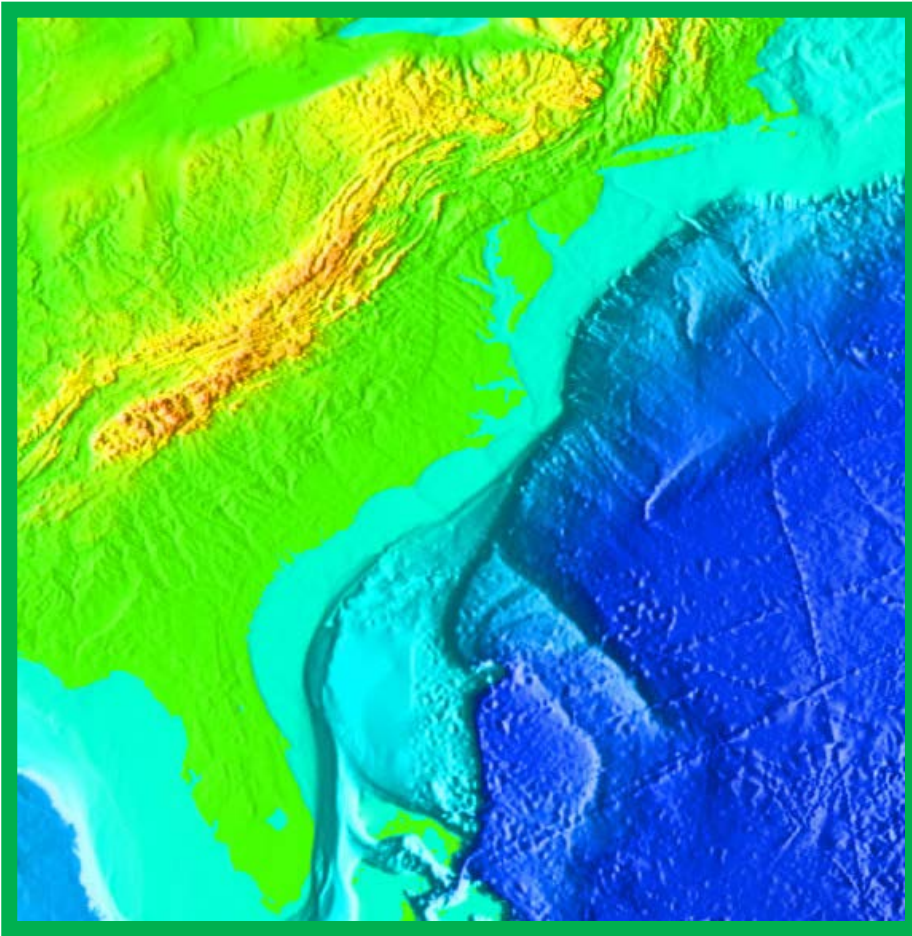
THE KERATIN CONNECTION



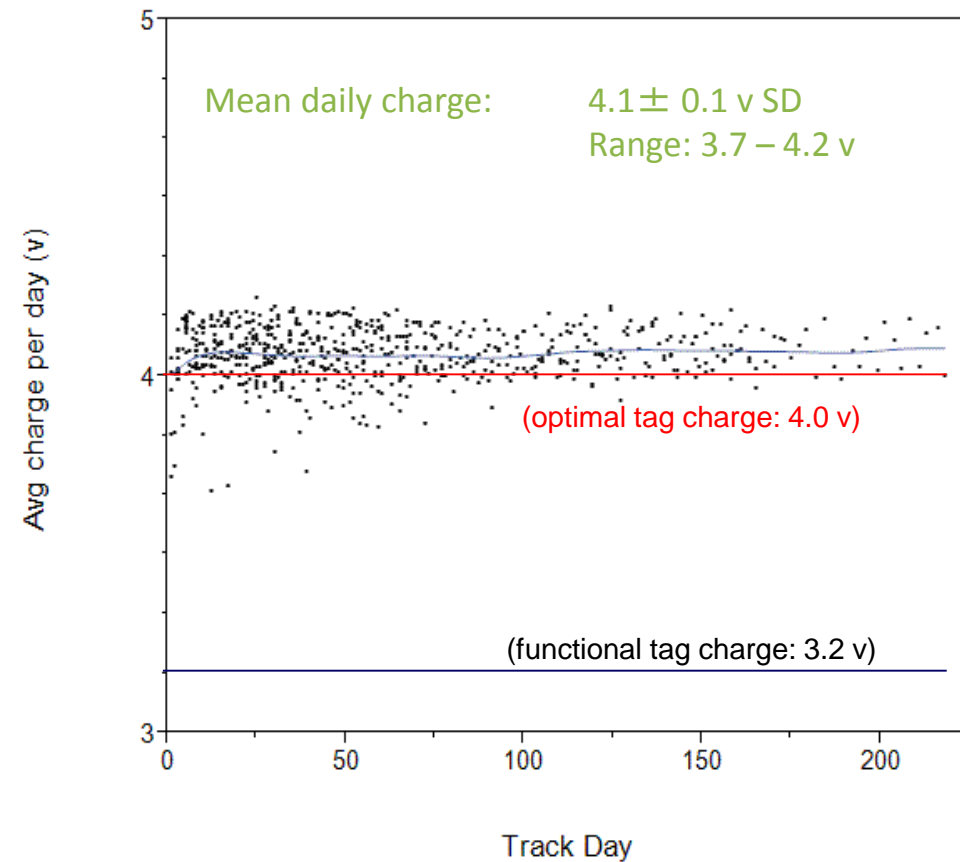
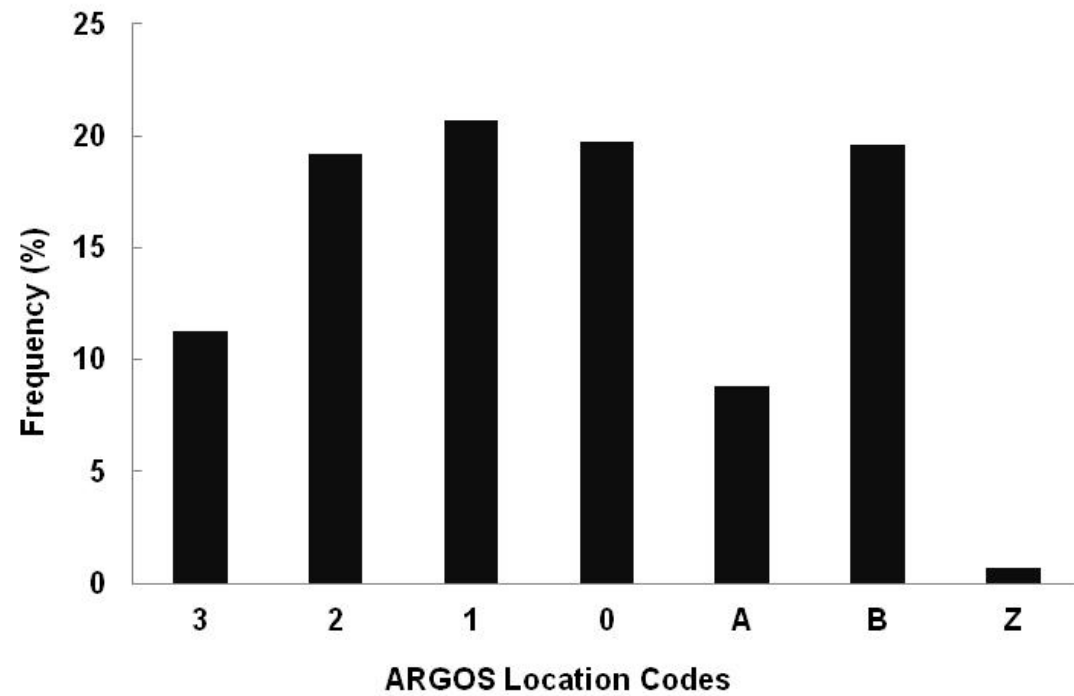
FIRST SATELLITE TRACKS—LOGGERHEADS



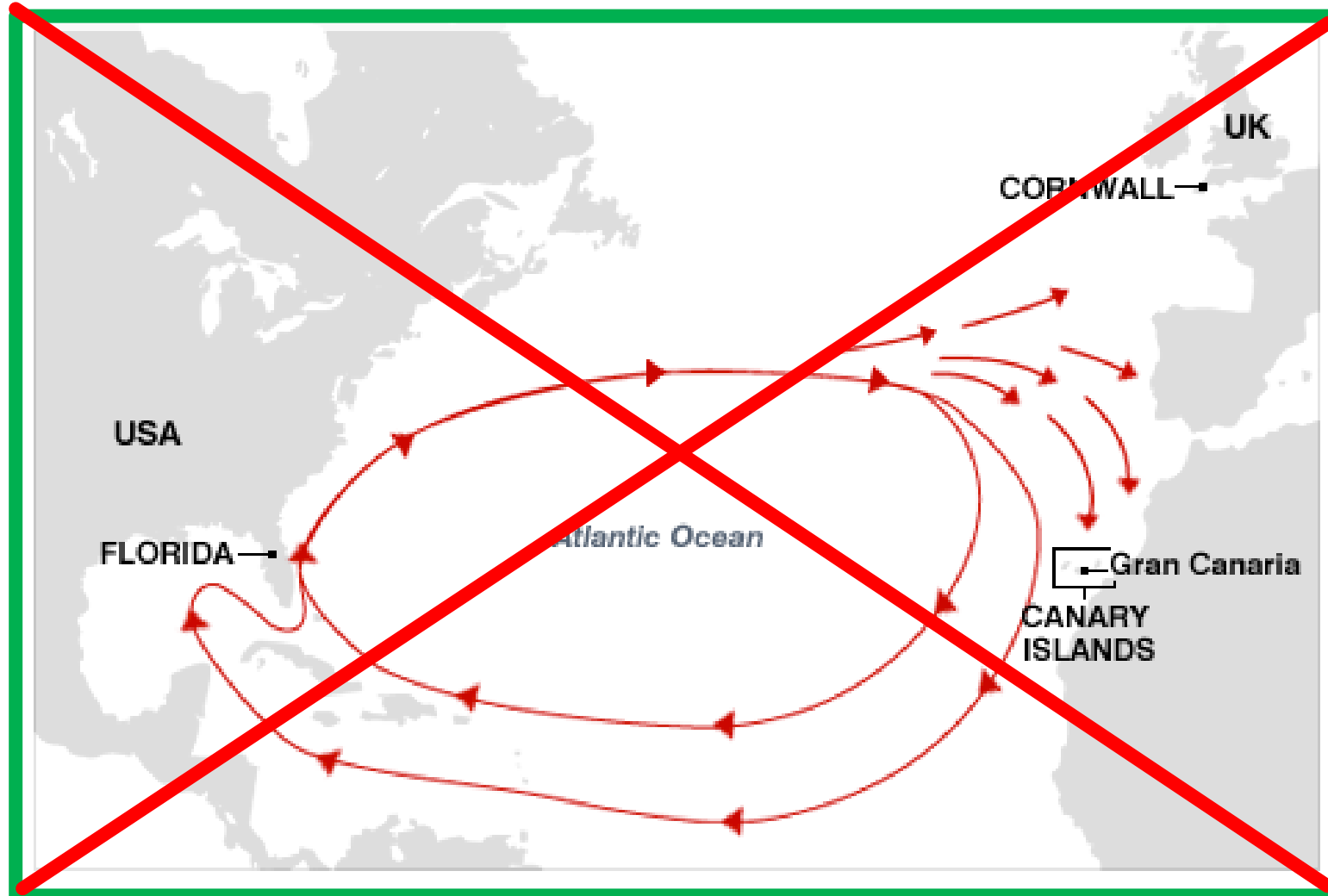
HYPOTHESES—YES!



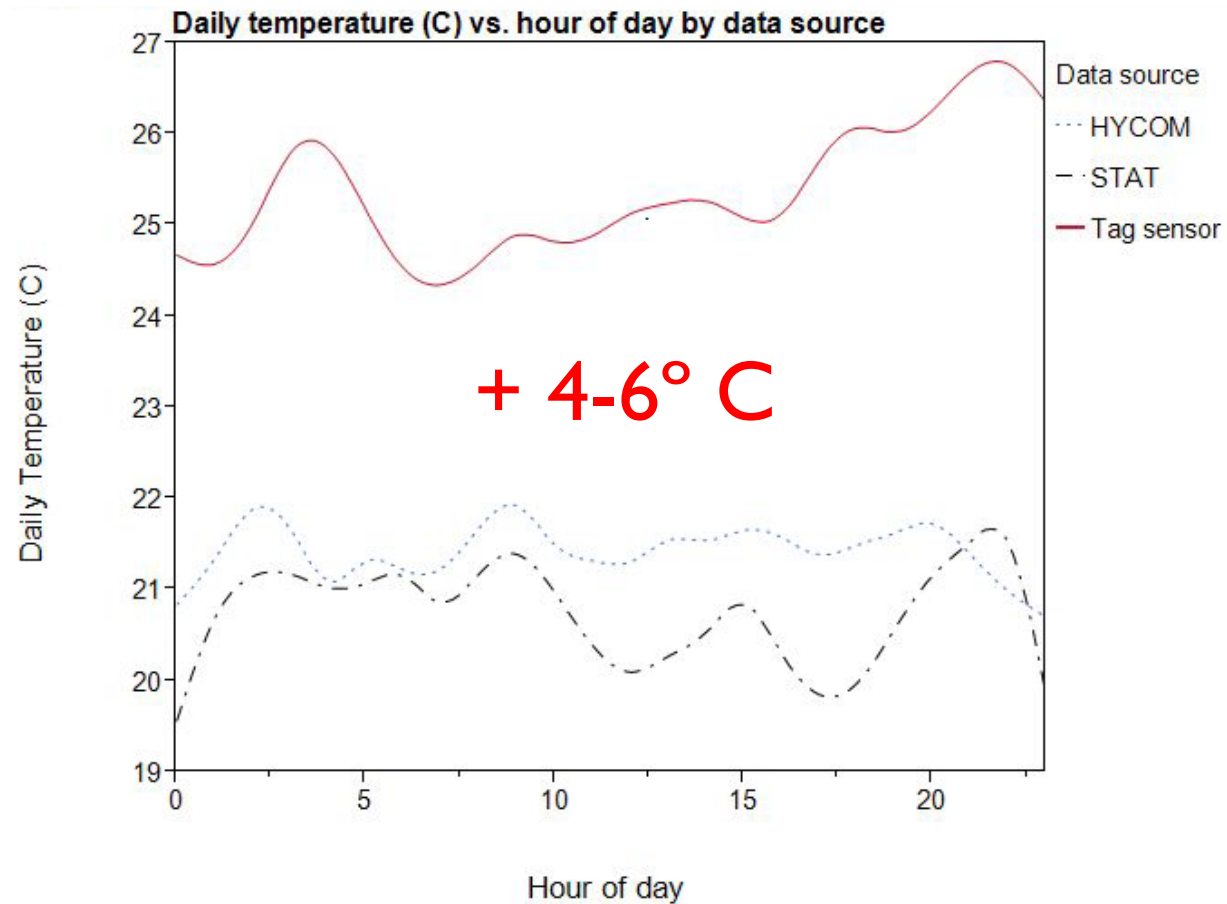
HYPOTHESES—YES!



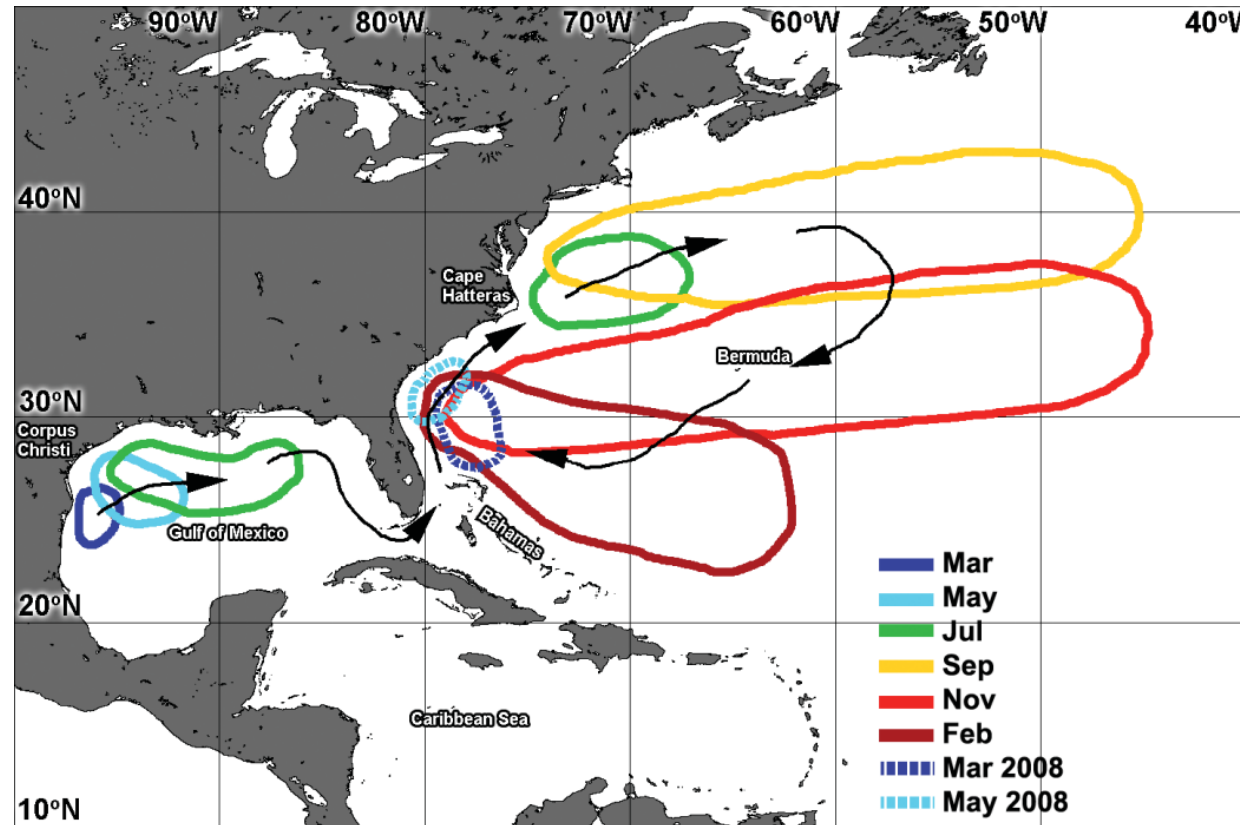
HYPOTHESES—YES...AND NO...



NEW HYPOTHESES—TEMPERATURE

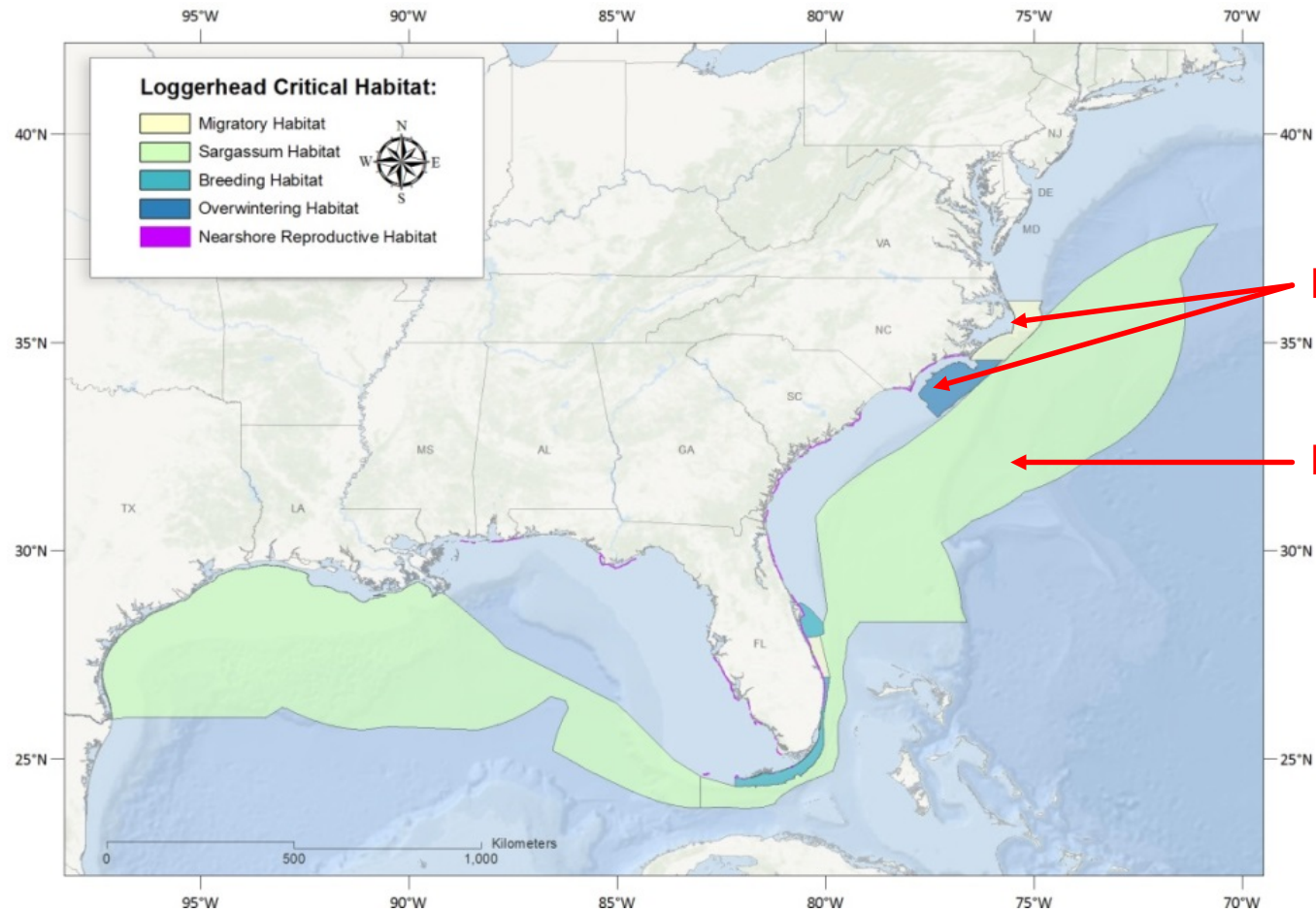


SARGASSO SEA!



Sargassum biomass

LOGGERHEAD CRITICAL HABITAT



Mansfield et al. 2009

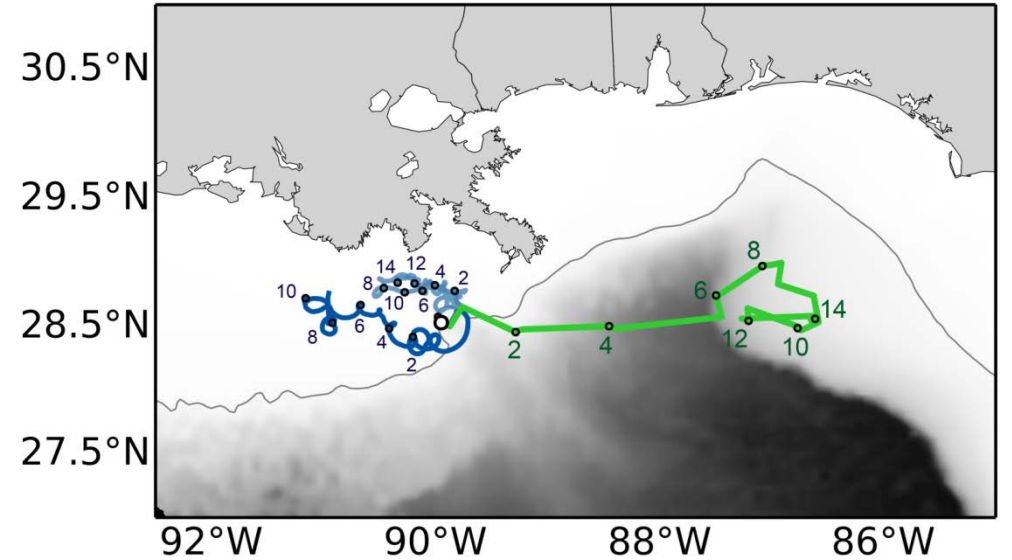
Mansfield et al. 2014

GULF OF MEXICO

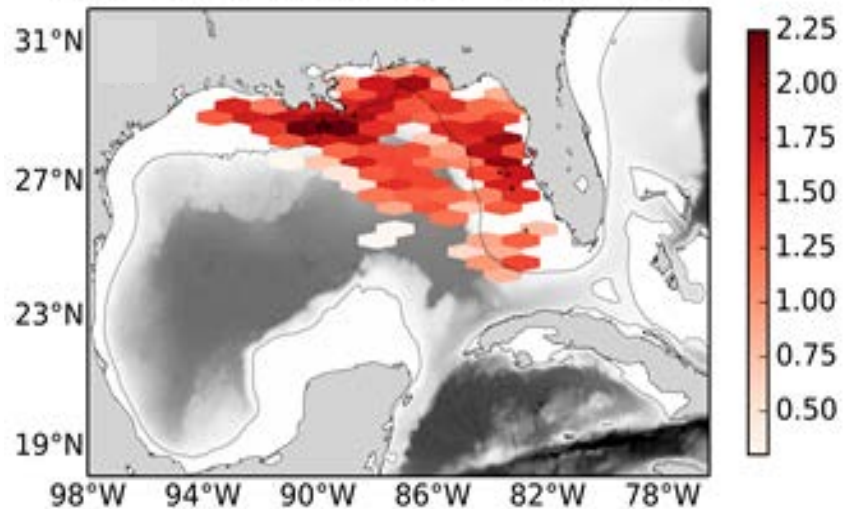
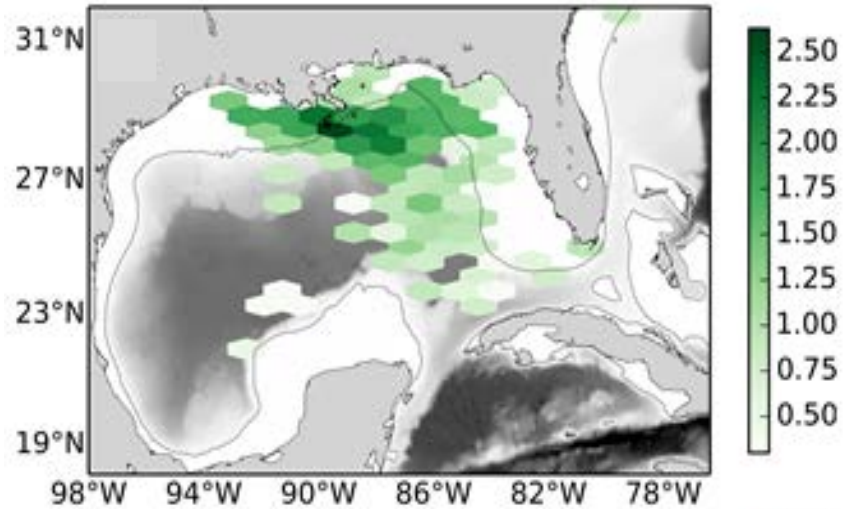


Photos: K. Mansfield; G. Stahelin

TURTLES VS. DRIFTERS



ONTOGENETIC TRANSITION ZONE



GLOBAL COLLABORATIONS



Photos: TAMAR; MTRG; K. Mansfield

UCF & THE SEA TURTLE LIFE/CAREER CYCLE

- 35+ years reproductive biology
- 35+ years coastal juvenile ecology
- Oceanic juvenile research
- Research, education, advisory service



COASTAL CLUSTER HIRES AT UCF (2015)

- **Ecological modeler** (Biology)
- **Environmental policy** (Political Science/Biology)*
- **Coastal water resources engineer/ecologist** (Biology/Chemistry)
- **Environmental/ecological economist** (Economics)*
- **Coastal planner** (Public Administration)

* = Associate/Full Professor other lines are Assistant/Associate

THANK YOU!

- Inwater Research Group
- NOAA Fisheries, SEFSC
- Florida Wildlife Commission
- National Academies
- NOAA Supplemental Oil Spill Plan
- Florida RESTORE Act Center for Excellence Program



 : facebook.com/ucfmtrg

  : [@UCFturtlelab](https://twitter.com/UCFturtlelab) | www.biology.cos.ucf.edu/marineturtleresearchgroup