



W&M ScholarWorks

Reports

2-1-2006

Effectiveness of the Blue Crab Spawning Sanctuary in Chesapeake Bay

Debra M. Lambert
Virginia Institute of Marine Science

Rom Lipcius
VIMS

John M. Hoenig
Virginia Insitute of Marine Science

Follow this and additional works at: <https://scholarworks.wm.edu/reports>



Part of the [Marine Biology Commons](#)

Recommended Citation

Lambert, D. M., Lipcius, R., & Hoenig, J. M. (2006) Effectiveness of the Blue Crab Spawning Sanctuary in Chesapeake Bay. Special Reports in Applied Marine Science and Ocean Engineering (SRAMSOE) No. 391. Virginia Institute of Marine Science, William & Mary. <https://doi.org/10.21220/V5SF1C>

This Report is brought to you for free and open access by W&M ScholarWorks. It has been accepted for inclusion in Reports by an authorized administrator of W&M ScholarWorks. For more information, please contact scholarworks@wm.edu.

Effectiveness of the Blue Crab Spawning Sanctuary in Chesapeake Bay*

Debra M. Lambert, Romuald N. Lipcius and John M. Hoenig



Special Report in Applied Marine Science and Ocean Engineering
No. 391

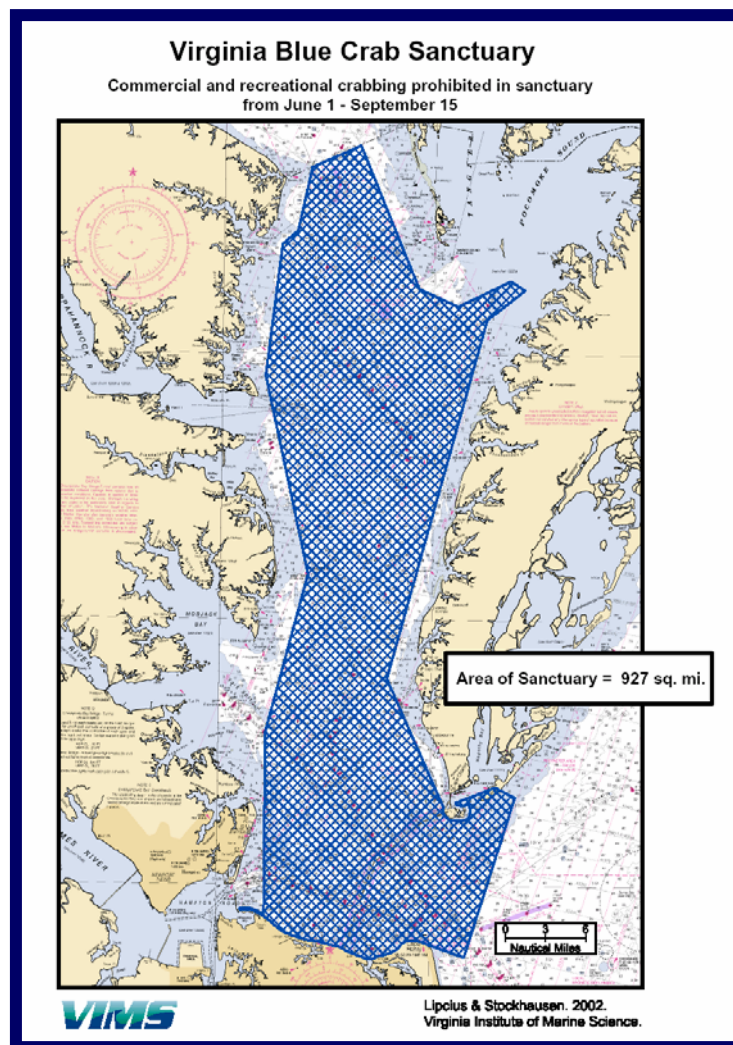
Virginia Institute of Marine Science
The College of William and Mary
Gloucester Point, Virginia 23062

February 2006

* This report is based on a manuscript that has been accepted for publication in Marine Ecology Progress Series. Contact R.N. Lipcius (rom@vims.edu), Virginia Institute of Marine Science, Gloucester Point, VA 23062, for further information.

ACKNOWLEDGEMENTS

We are extremely grateful to the Honorable Senator John H. Chichester, who provided crucial legislative support for expansion of the sanctuary, to C. Failmezger and the Save the Blue Crab Foundation, who provided community support for expansion of the sanctuary, and to the Virginia Marine Resources Commission (Chair W. Pruitt; Director of Fisheries J. Travelstead; Assistant Director R. O'Reilly) for implementing the sanctuary regulation. We are also grateful to the following research surveys for their assistance in tagging of crabs: VIMS Trawl Survey, MDNR Trawl Survey, ChesMMAF, CHESFIMS, and the Bay-wide Winter Dredge Survey. We would specifically like to thank: M. Seebo, N. Olmstead, K. Knick, K. Erickson, M. Montane, W. Lowry, L. Liguori, T. Mathus, C. Crippen, A. Halvorson, H. Brooks, A. Jestel, A. Hewitt, J. Ellis, P. Gerdes, J. Gartland, E. Bresseur, P. Lynch, C. Bonzek, R. Latour, D. Ward, J. Gibbs, L. Fegley, G. Davis, and T. Miller. We also thank R. Chuenpagdee for her comments and insight and D. Wilcox for assistance with GIS software. Funding was provided by the National Oceanic and Atmospheric Administration (NOAA) Chesapeake Bay Office under two projects. Most research was funded under the project "Tagging Studies of Blue Crabs in Chesapeake Bay" while analyses and report preparation were funded by the project "Blue Crab Advanced Research Consortium."



ABSTRACT

The blue crab spawning stock in Chesapeake Bay sustained a severe and persistent decline beginning in 1992. As part of the effort to enhance the spawning stock, the spawning sanctuary in lower Chesapeake Bay was enlarged to over 240,000 ha. This marine reserve and corridor prohibits exploitation of mature females en route to or in the spawning grounds during the summer spawning season (1 June-15 September). To assess the effectiveness of the sanctuary, we tagged terminally molted, mature females inside and outside the sanctuary during three sanctuary seasons (2002-2004). Crabs were captured throughout the Bay and its tributaries, measured, tagged, and released on site. Recaptures of tagged crabs were reported by commercial and recreational fishers. Probability of recapture for crabs released outside of the sanctuary was 6.3, 5.2, and 2.8 times the probability of recapture for crabs tagged inside the sanctuary for 2002, 2003 and 2004, respectively. Consequently, a significant proportion of adult female blue crabs remains in the sanctuary to spawn and is not captured by the fishery. Hence, the marine reserve and corridor for the blue crab spawning stock in Chesapeake Bay is an effective means of protecting females migrating to or residing in the spawning grounds. This investigation serves as one of the few empirical tests to date of the effectiveness of a marine reserve designed to protect spawning stock.

INTRODUCTION

Spawning sanctuaries

One of the main objectives of marine reserves, “a zone in which some or all of the biological resources are protected from removal or disturbance” (NRC 2001), is the protection of spawning-stock biomass to provide a source of recruitment to fisheries outside the reserve via larval dispersal (Roberts & Polunin 1991, Dungan & Davis 1993, Rowley 1994). Assessment of the effectiveness of marine reserves is important to improve the design, use and management of reserve systems. Assessment typically involves definition of the goals and objectives of the reserve, collection of data on various measurable indicators of success, and evaluation to determine whether the reserve is meeting the intended goals and objectives.

Empirical evidence for the efficacy of reserves that specifically target the spawning stock is extremely limited. The presumption that spawning stock reserves will increase recruitment in nearby areas is often not valid (Kassner & Malouf 1982, Helsinga 1984, McCay 1988), probably due to various biotic and physical processes critical to enhancing recruitment at the metapopulation level (Lipcius et al. 2005). Examples of effective marine reserves do exist however. Spawning stock abundance and potential egg production were higher in reserves than outside reserves for the Caribbean spiny lobster, *Panulirus argus* (Bertelsen & Cox 2001, Lipcius et al. 2001a), the American lobster, *Homarus americanus* (Rowe 2002), and the Nassau grouper, *Epinephelus striatus* (reviewed in Chiappone & Sealey 2000), which were most likely linked to the higher abundance and larger sizes of animals in reserves. Although it is uncertain whether an increase in egg production or spawning stock abundance will lead to an increase in recruitment, these studies suggest the feasibility of protecting a portion of the spawning stock in reserves to enhance egg production of marine metapopulations.

The transplanting of adult animals into favorable habitats with the goal of increasing recruitment has been attempted with several invertebrates and provides an additional example of a spawning stock reserve. The transplanting of hard clams, *Mercenaria mercenaria*, was deemed ineffective when clam abundance, survival, and gamete production of the transplanted clams were low (McCay 1988) or when contribution to larval production and recruitment was low (Kassner & Malouf 1982). The transplanting of Eastern oyster, *Crassostrea virginica*, onto no-take oyster reefs has seen occasional success throughout Chesapeake Bay, as spat settlement has increased on some stocked reefs and nearby oyster grounds following stocking efforts (Southworth & Mann 1998, Brumbaugh et al. 2000). Low mortality and evidence of reproduction, based on a visual index of gonadal bulk, of transplants and large numbers of apparent recruits suggest that the transplanting of green abalone, *Haliotis fulgens*, can be effective in enhancing populations (Tegner 1992). The translocation of non-spawning adult queen conch, *Strombus gigas*, to offshore sites, where spawning occurs, has proven to be a feasible means of augmenting the spawning stock (Delgado et al. 2004).

The protection of spawning aggregations is another means of using marine reserves to protect spawning stock. Since spawning aggregations are often predictable and targeted by fishers, they are susceptible to overexploitation. In some cases protection of spawning aggregations has increased density, biomass and individual size of various grouper species (Beets & Friedlander 1992, 1998, Chiappone et al. 2000). Protection of spawning aggregations has also resulted in a more favorable sex ratio in the red hind, *Epinephelus guttatus* (Beets & Friedlander 1992, 1998), gag, *Mycteroperca microlepis*, and scamp, *M. phenax* (Coleman et al. 2004).

Tag-return studies, where animals are captured, tagged and released with the hope that they are recaptured and reported at some future date by the commercial or recreational fishery, have been used to assess the movement of animals in relation to marine reserves. Tag-return data can be used to estimate emigration rates of animals from reserves (Attwood & Bennett 1994, McGarvey 2004), to demonstrate the movement of juveniles away from protected nursery habitats into areas open to exploitation (Davis & Dodrill 1980, 1989, Gitschlag 1986), and to compare recapture rates between animals tagged inside and outside of reserves (Rowe 2001, Medici 2004). When tag-return studies are conducted concurrently in areas open to fishing and in marine reserves, patch-specific mortality rates can be estimated (Joe 2001).

Blue crab, *Callinectes sapidus*

Mature female blue crabs are ideal for tag-return studies because they do not molt (Churchill 1919, Van Engel 1958) so tag loss is likely to be minimal. The shape of the carapace is such that a light-weight and non-invasive tag can easily be attached around the lateral spines on the dorsal surface. Tag-return studies on the blue crab have been used to examine migration (Fiedler 1930, Cronin 1949, Fischler & Walburg 1962, Tagatz 1968, Judy & Dudley 1970, Osterling 1976, McConaugha 1993, Turner et al. 2003, Aguilar et al. 2005), to provide estimates of population size (Fischler 1965), and to assess the effectiveness of protected areas (Medici 2004). It was the objective of this study to use tag-return methodology with adult female blue crabs in Chesapeake Bay to assess the effectiveness of the Virginia blue crab spawning sanctuary.

The blue crab fishery is the most important commercial fishery in Chesapeake Bay (Rugolo et al. 1998, Anon. 2003), yet spawning stock biomass has declined by 84 % relative to levels in the late 1980s (Lipcius & Stockhausen 2002). The life cycle of the blue crab in Chesapeake Bay involves a terminal molt of the females and subsequent mating between early May and October, with peaks in May and late August or early September (Van Engel 1958, Millikin & Williams 1984). After maturing and mating, female crabs migrate to the higher salinity waters of the southern portion of Chesapeake Bay either to spawn or to overwinter and spawn the following year (Churchill 1919, Van Engel 1958). Spawning occurs between May and early September (Van Engel 1958, Jones et al. 1990, Prager 1996).

History of the blue crab sanctuary

One approach to managing the blue crab stock in Chesapeake Bay involves a marine reserve. A spawning sanctuary established in the southern portion of the Bay in 1942 was originally 37,814 ha (Rob O'Reilly, Virginia Marine Resources Commission (VMRC), personal communication) and closed to the crab fishery during July and August (Sandoz 1943). The sanctuary was originally implemented in response to a significant decline in blue crab harvest throughout the Chesapeake Bay in 1940 and 1941 and was established to protect adult female blue crabs during the spawning period (Sandoz 1943). The sanctuary season was extended to include April, May, and June in 1943 (Sandoz 1943). Initial investigations deemed the historical sanctuary effective due to high densities of blue crab zoeae (Sandoz 1943, Newcombe 1943), migration of egg-bearing female crabs (Sandoz 1943, Newcombe 1943), and optimal environmental conditions for embryonic and larval development (Sandoz & Rogers 1944) in the sanctuary area. In addition, our evaluation of data from a previous tag-return study (McConaugha 1993) indicated that adult female crabs tagged within the historical sanctuary were not captured by the fishery. The historical sanctuary, however, did not protect a sufficiently large fraction of the spawning stock (Seitz et al. 2001) to avert an 84 % decrease in spawning stock biomass (Lipcius & Stockhausen 2002).

It is not known when the sanctuary season switched to the present day period of 1 June to 15 September. Both recreational and commercial crab harvesting are prohibited in the sanctuary area, except that recreational crabbing is lawful in the lower sanctuary area (Section 28.2-709 of the Code of Virginia). The size of the sanctuary has increased considerably over the last 12 years. In 1994, the Bayside Eastern Shore Sanctuary (BESS) was established to include an additional 19,400 ha of protected waters in the Bay along the eastern shore of the lower Bay, which was later reduced to 16,000 ha in 1998 when the upper portion was removed and opened to fishing (Seitz et al. 2001). Approximately 16 % of the potential spawning stock was protected by the historical sanctuary and BESS (Seitz et al. 2001). Lipcius et al. (2001b) studied the potential for an expanded sanctuary in protecting adult female crabs migrating to the spawning grounds in the lower Bay. They found catch per unit effort (CPUE) of adult females in a fishery independent trawl survey was significantly higher in the proposed deepwater marine reserve and corridor (> 13 m depths) than in adjacent shallow water, suggesting that expansion of the existing sanctuary into deeper waters would further protect the spawning stock.

In June of 2000, the sanctuary was expanded from the mouth of the Bay to the Virginia/Maryland border, roughly following the 10.7 m depth contour in the mainstem of the Bay, to a size of 172,235 ha (Lipcius et al. 2003). The purpose of the expansion was not only to protect those female crabs in the spawning grounds but also to protect adult females en route to the spawning grounds during the reproductive period. Approximately 50 % of the adult females sampled by Lipcius et al. (2003) occurred in waters deeper than 10 m and were therefore protected by the spawning sanctuary. The Virginia blue crab sanctuary was enlarged again in 2002, roughly following the 9.1 m depth contour, to its current size of 240,092 ha (VMRC Regulation # 4 VAC 20-752-10

ET SEQ). The enlarged sanctuary is estimated to protect 70% of the adult females (i.e. spawning stock) in lower Chesapeake Bay during the spawning season (Lipcius et al. 2003). The effectiveness of the current sanctuary, however, had not been addressed, and it provided an opportunity to assess the efficacy of a marine reserve in protecting the spawning stock of a heavily exploited marine species.

The objective of the blue crab sanctuary is to protect females in and en route to the spawning grounds in the reproductive period with the overall goal of increasing spawning potential. The effectiveness of the sanctuary in protecting the blue crab is in part determined by the degree and nature of crabs' mobility relative to the size and shape of the sanctuary. The effectiveness of the sanctuary is dependent on female crabs remaining in the sanctuary for spawning, and would be reduced if females were to move outside of the sanctuary prior to spawning and become captured by the fishery. To assess the effectiveness of the spawning sanctuary, mature females were tagged and released inside and outside of the sanctuary in the summers of 2002, 2003, and 2004. A comparison of the probability of recapture for crabs tagged outside the sanctuary to crabs tagged inside the sanctuary using relative risk provided a means of assessing sanctuary effectiveness quantitatively.

METHODS

Tagging and tag return

Mature female crabs were obtained from the Virginia Institute of Marine Science (VIMS) Trawl Survey, Maryland Department of Natural Resources (MDNR) Trawl Survey, and VIMS Chesapeake Bay Multispecies Monitoring and Assessment Program (ChesMMAP) between 1 June and 15 July of 2002, 2003, and 2004. The University of Maryland Chesapeake Biological Laboratory's (CBL) Chesapeake Bay Fishery Independent Multispecies Fisheries Survey (CHESFIMS) also obtained crabs in 2004. Crabs were measured (carapace width, spine to spine) with vernier calipers and tagged by tying a strap tag across the back and around the lateral spines (Figure 1); the ends were crimped together with a 0.635 cm, zinc-plated-copper, oval sleeve (mean weight of tag and crimp = 1.27 ± 0.06 SD g). Crabs were then released as close as possible to the capture location (Figures 2 & 3). The number of tagged crabs released at each site was proportional to the number caught at the site, which helped ensure that the distribution of tagged crabs was representative of the distribution of mature females. Each tag had an individual identification number, a toll-free phone number, the words "\$20 REWARD" and instructions to record the location and date of capture. An informational flyer was sent in February 2004 to all licensed crab fishers in Virginia to inform them of the tagging program. Newspaper articles in the *Waterman's Gazette* (published by the Maryland Watermen's Association) also publicized the program regularly since July 2004.

Captures of tagged crabs were reported by commercial and recreational fishers, who captured the tagged crabs during normal fishing operations. We obtained as much

of the following information from the fishers as possible: location of capture, date of capture, water depth, method of capture, presence or absence of an egg mass, and whether the fisher was commercial or recreational. A letter describing the program with the corresponding crab release information, a data sheet, a map of Chesapeake Bay, and a self-addressed stamped envelope were mailed to the fisher with instructions to make any additional comments, to mark the location of the capture, and to return the data forms and tag back to VIMS. Once the tag was received, payment was mailed to the fisher.

Survey Design

Crabs were obtained and tagged by four fishery-independent trawl surveys to extend our tagging effort over a wide area (Chesapeake Bay and tributaries). A brief description of the surveys follows. The VIMS Trawl Survey operates in the Virginia portion of the Bay and in the James, York, and Rappahannock Rivers. The survey deploys a 9.14 m semi-balloon otter trawl and tows for 5 min at approximately 100 sites monthly according to a combined fixed and stratified random sampling design (Montane et al. 2004). The MDNR Trawl Survey samples 37 fixed sites in six river systems (Chester River, Eastern Bay, Choptank River, Patuxent River, Tangier Sound, and Pocomoke Sound) and 12 trial sites in three river systems (Fishing Bay, Little Choptank, and Nanticoke) monthly from May through October using a 4.9 m semi-balloon otter trawl (L. Fegley, MDNR, personal communication).

The VIMS ChesMMAp survey samples the entire mainstem of Chesapeake Bay, stratifying the Bay into five regions with three depth strata per region. The survey deploys a 13.7 m otter trawl and tows at approximately 3.5 knots for 20 min per site. Five cruises are conducted each year (March, May, July, September, and November) and approximately 80-90 sites are sampled per cruise (Latour et al. 2003, Bonzek et al. 2004).

The CHESFIMS survey of CBL conducts three cruises a year (spring, summer, and fall) and samples approximately 50 sites per cruise throughout the mainstem of the Bay according to a combined fixed and stratified random sampling design. The survey uses a single, oblique stepped midwater trawl (18 m²) (Miller et al. 2005).

Recapture probability

The effectiveness of the sanctuary was characterized by comparing the probability of recapture for crabs tagged outside the sanctuary to the probability of recapture for crabs tagged inside the sanctuary using relative risk (Daniel 1999). Only crabs tagged between 1 June and 15 July and then subsequently recaptured from 1 June to 15 September (the time period that the sanctuary is in effect) were considered for this analysis. During this time period, crab harvesting (and therefore the recapture of a tagged crab) can occur anywhere in the Bay except for the sanctuary.

Relative risk (RR) is a ratio of two probabilities and is calculated by p_1/p_2 , where p_i is the proportion of the animals in group i that is recaptured and i takes on the values “tagged inside” and “tagged outside” the sanctuary. The 95 % confidence interval for the relative risk is calculated by: $RR^{1 \pm (z_\alpha / \sqrt{X^2})}$, where z_α is the two-sided z value corresponding to the chosen confidence interval ($z = 1.96$) and X^2 is the Chi square test statistic (Daniel 1999). The X^2 value derived from a 2 x 2 contingency table (comparing frequency of tagged crabs that are recaptured and not recaptured within the sanctuary and outside of the sanctuary) can be calculated by the shortcut formula:

$\frac{n(ad - bc)^2}{(a + c)(b + d)(a + b)(c + d)}$, where n is the total number of crabs tagged, and a , b , c , d are the number of crabs tagged outside and recaptured, number of crabs tagged outside and not recaptured, number of crabs tagged inside and recaptured, and number of crabs tagged inside and not recaptured, respectively (Daniel 1999). The null hypothesis is that tag recapture and location of release (inside vs. outside of the sanctuary) are independent. A relative risk of one indicates that the probability of recapture is the same for both groups of crabs, whereas a relative risk greater than one implies that the probability of recapture for crabs tagged outside is greater than that of crabs tagged inside.

The shortest in-water distance between release location and the sanctuary border was estimated using Arcview GIS software for each crab tagged and recaptured. Data were pooled across all years and probability of recapture was plotted against distance to sanctuary border at release for crabs tagged inside and outside of the sanctuary. This was conducted to determine if all crabs within an area, either inside or outside of the sanctuary, are equally likely to be recaptured regardless of the distance to the sanctuary border. The analysis for crabs released inside the sanctuary tests the biological hypothesis that crabs that are released close to the sanctuary border are more likely than those tagged deep within the sanctuary to be recaptured either by illegal fishing in the sanctuary or by moving outside the sanctuary and being recaptured legally. The analysis for crabs released outside of the sanctuary tests the biological hypothesis that crabs released closer to the sanctuary are more likely to move inside the sanctuary and are therefore less likely to be recaptured than those tagged far from the sanctuary.

Movement, distance traveled, and days at large

The recapture locations of crabs recaptured during the sanctuary period (1 June to 15 September) were plotted using Arcview GIS software based on the location description provided by the fisher. Recapture locations are approximations as specific coordinates were rarely provided. Migration of crabs was assessed qualitatively by plotting straight lines between release and recapture locations. The shortest possible in-water distance between release location and recapture location was estimated using Arcview GIS software. These distances were likely underestimates of the actual distances traveled. The number of days at large (the number of days between release

and subsequent recapture) was calculated for all recaptured crabs. Data were pooled from the three years, due to low sample size; mean distance traveled and mean number of days at large were calculated for crabs released inside and outside the sanctuary. Unpaired t-tests were conducted to determine if mean distance traveled and mean days at large varied with release location (inside vs. outside the sanctuary).

Size

The mean size (mm carapace width) of crabs tagged inside and outside of the spawning sanctuary during each year were compared using unpaired t-tests. To test at a nominal $\alpha = 0.05$, the individual tests were conducted at a Bonferroni-corrected $\alpha = 0.05/3 = 0.017$. In addition, size data over all years and both tagging locations were pooled, due to low sample size, and then the mean sizes of crabs that were and were not recaptured were compared with an unpaired t-test.

RESULTS

Recapture probability

A total of 843 crabs was released between 1 June and 15 July of 2002, 2003 and 2004, of which 104 crabs were recaptured during the time period of the sanctuary (1 June – 15 September). The majority of recaptures (92 %) was reported by commercial fishers, of which 94 % was recaptured in crab pots, 5 % by trot line, and 1 % within pound nets. The remaining 8 % of recaptures was reported by recreational fishers. Two of the commercial recaptures were reported by seafood picking houses rather than by individual fishers.

Crabs tagged outside of the sanctuary had significantly higher probabilities of recapture than those tagged inside the sanctuary in 2002 (RR = 6.3, 95 % CI 2.4 – 16.3) and 2004 (RR = 2.8, 95 % CI 1.6 – 5.0) (Table 1). An increased risk of recapture was also detected in 2003 (RR = 5.2, 95 % CI 0.9 – 29.0), although this result was marginally significant (Table 1). For all three years, the percentage recaptured was much higher for crabs released outside of the sanctuary relative to crabs released inside the sanctuary, ranging from 12 – 21 % outside the sanctuary and 2 – 6 % inside the sanctuary (Table 1). There was no apparent relationship between distance to the sanctuary border and the probability of recapture for crabs released either inside or outside of the sanctuary (Figure 4).

Ideally, all tag releases would have occurred on the first day that the sanctuary was imposed (1 June) in each year. Since this was not logistically possible, the releases occurred over a longer time “window.” This introduces some bias since crabs that are released first will experience higher fishing mortality than those released later. Crabs released towards the end of the sanctuary season (i.e., in late August and September) would have less of a chance to be recaptured during the time period of the

sanctuary, regardless of release location, simply because they are at large for a shorter time period. An analysis of the relative risk of recapture using different periods of release window length (as additional crabs were tagged after July 15 for another study) showed that the relative risk did not change substantially. We chose crabs tagged between 1 June and 15 July in our analysis because this time window for crab releases was short enough to reduce the potential for bias but it also provided an adequate sample size for analysis. In addition, there was no difference in the time window of crab releases inside and outside of the sanctuary, such that there was no bias in the relative risk estimates due to the time window of releases used in the analysis.

Movement, distance traveled, and days at large

Almost all recaptured crabs were caught at locations down river or down Bay from their release locations. Crabs released outside the sanctuary moved towards the Bay mainstem and the lower Bay spawning grounds (Figure 2). Crabs released inside the sanctuary tended to be recaptured in the lower Bay spawning grounds and in shallow feeding areas (Figure 3).

The distance traveled by crabs varied from <1 km to 135 km (mean = 26 ± 3 (SE) km, $n = 102$). No significant difference in distance traveled was detected between crabs released inside (mean = 23 ± 4 (SE) km, $n = 16$) and outside (mean = 27 ± 3 (SE) km, $n = 86$) the sanctuary (t-test: $df = 100$; $p = 0.596$).

The overall time at large for crabs recaptured during the sanctuary season varied from 1 to 48 d (mean = 15.0 ± 1.3 (SE) d, $n = 99$). The mean time at large was significantly longer for crabs released inside the sanctuary (23.2 ± 3.4 (SE) d, $n = 17$) than for crabs released outside the sanctuary (13.4 ± 1.3 (SE) d, $n = 82$) (t-test: $df = 97$; $p = 0.003$).

Size

The mean size (mm carapace width) of females released between 1 June and 15 July outside and inside of the spawning sanctuary differed by less than 3 mm and was not significantly different in 2002 (Table 2, t-test: $df = 193$; $p = 0.719$) and 2003 (Table 2, t-test: $df = 165$; $p = 0.228$). The mean size of crabs was significantly larger outside (148.4 ± 1.4 (SE) mm, $n = 209$) than inside (138.8 ± 1.1 (SE) mm, $n = 207$) the sanctuary in 2004 (Table 2, t-test: $df = 386$; $p < 0.0005$). Over all years and both tagging locations, the mean size of crabs that were recaptured (144.7 ± 1.5 (SE) mm, $n = 101$) was significantly larger than the mean size of crabs that were not recaptured (140.8 ± 0.7 (SE) mm, $n = 677$) (t-test: $df = 776$; $p = 0.035$).

DISCUSSION

The effectiveness of marine reserves in protecting mobile species is determined by the degree and nature of their mobility and the size and shape of the reserve. Highly migratory species are more likely to move outside of protected areas and become susceptible to exploitation, such that large reserves are needed (Polacheck 1990, Rowley 1994, Gu nette et al. 2000). Female blue crabs in Chesapeake Bay migrate up to 200 km (Fiedler 1930, Hines et al. 1995, Turner et al. 2003, Aguilar et al. 2005, this study) to reach the spawning grounds in the lower portion of the Bay. The blue crab sanctuary encompasses 240,092 ha in the mainstem of lower Chesapeake Bay from 1 June to 15 September. The effectiveness of the sanctuary is dependent on female crabs remaining in the sanctuary for spawning, and would be reduced if females were to move outside the sanctuary and be exploited prior to spawning. The probability of recapture was substantially and significantly higher for crabs tagged outside the sanctuary relative to crabs tagged inside the sanctuary during the three years of this study, such that females outside the sanctuary were approximately 3-6 times more likely to be caught by fishers than females inside the sanctuary. These findings indicate that the sanctuary is of a sufficient size that most females in the sanctuary do not move out of the sanctuary prior to spawning.

There is little evidence for illegal fishing within the sanctuary. We flew over the sanctuary at two different times during the summer of 2002, and observed very few crab pots within sanctuary boundaries. In addition, VMRC has reported very few cases of illegal fishing within the sanctuary during their reconnaissance flights over the sanctuary (Col. Steve Bowman, VMRC, personal communication). Moreover, the measure of the effectiveness of the sanctuary using relative risk reflects both movement of crabs and illegal fishing by fishers. There are two ways an animal tagged inside the sanctuary could be recaptured: either the crab moves out of the sanctuary or a fisher illegally poaches the crab from the sanctuary. Either way, it is a failure of the sanctuary which tends to equalize the catch rates from the two areas.

In addition, we believe that illegal recapture of a tagged crab should not deter the reporting of a crab because the fisher could simply report it as having been caught outside the sanctuary (and the illegitimacy of the recapture would be unknown to us) and the \$20 reward offers considerable incentive for reporting. If illegal fishing within the sanctuary occurs and tagged crabs were captured and reported as being caught outside, it would not bias our estimate of the relative risk of recapture. Note, however, that there was little evidence of illegal activity inside the sanctuary (see preceding paragraph).

Of 104 crabs that were recaptured during the sanctuary period (Table 1), three crabs were reported recaptured within the sanctuary. The three crabs were caught by recreational fishers in the southern most portion of the sanctuary where recreational fishing is allowed. Sixteen crabs were recaptured within 1.5 km of the sanctuary border. Since recapture locations are approximations, it is difficult to know for certain which side of the sanctuary border these crabs were recaptured. Uncertainty of recapture location

does not, however, affect our estimate of the relative risk, as it is more important to know whether or not a crab was recaptured than the location of recapture.

The collective evidence indicates that the spawning sanctuary is effective in allowing a considerable fraction (approximately 70%, Lipcius et al. 2003) of the blue crab spawning stock that enters the sanctuary to spawn during the reproductive period in Chesapeake Bay. Furthermore, our estimate of the effectiveness of the sanctuary is likely an underestimate because females tagged outside the sanctuary could move inside the sanctuary during migration to the spawning grounds and therefore would not be susceptible to the fishery. This would reduce the probability of recapture for crabs tagged outside the sanctuary and would lower the relative risk of recapture, therefore underestimating the effectiveness of the sanctuary.

There was no apparent relationship between the distance to the sanctuary border and the probability of recapture for crabs released inside or outside of the sanctuary, suggesting that degree of protection does not depend critically on location within the sanctuary. This further supports the idea that the sanctuary is of a proper design and large enough, relative to the movements of females, to protect females within its borders. It is likely that the crabs released inside the sanctuary migrated further south for spawning and remained in the sanctuary area.

This is the only known study that has demonstrated the use of relative risk as a tool to assess the effectiveness of a marine reserve. Tag-return data have, however, been used to compare percent recapture between animals tagged inside and outside of reserves (Rowe 2001, Medici 2004). Rowe (2001) tagged American lobster, *Homarus americanus*, inside and outside of two small reserves in Newfoundland, Canada. Only 0 - 19 % of lobsters tagged inside the reserve were recaptured by the fishery, as opposed to a 12 - 72 % recapture rate of lobsters tagged in areas open to the fishery (Rowe 2001). Medici (2004) compared the percentage recaptures of blue crabs tagged inside and outside two small spawning sanctuaries located at inlets along the Outer Banks of North Carolina along the Western Atlantic Ocean. The proportions recaptured from the different locations were approximately equal, indicating that the relatively small spawning sanctuaries offered little protection to the blue crab spawning stock in that system. The ineffectiveness of these sanctuaries was likely due to their small size (1,798 ha and 3,539 ha) relative to the movement patterns of adult females (Anonymous 2004, Medici 2004).

Our findings provided further evidence for the migration of adult female blue crabs down the tributaries and mainstem of the Bay towards the spawning grounds during late spring and summer. Although the mean distance traveled did not vary between crabs tagged inside and outside the sanctuary, crabs tagged inside the sanctuary were at large for a significantly longer time than crabs tagged outside the sanctuary. This suggests that even though crabs in the sanctuary may be captured by the fishery, they remain in the system for a longer period of time and therefore are more likely to spawn than crabs outside the sanctuary.

Our estimates of directions and distances of travel were likely influenced by the distribution of fishing effort. There is very little information, however, on the amount of fishing effort in Chesapeake Bay and on relative amounts of effort in different areas. In addition, movement patterns in a portion of the Bay (the spawning sanctuary) can not be observed when the sanctuary is in effect (since fishing is not allowed). Nonetheless, the overall pattern of movement (down the tributaries and down the Bay) conforms to what has been inferred from other studies in the past (Fiedler 1930, Van Engel 1958, Turner et al. 2003, Aguilar et al. 2005).

The mean size of crabs that were recaptured was significantly larger than the mean size of crabs that were not recaptured. This could be related to size-selective exploitation due to the use of cull rings in the commercial fishery (Lipcius & Stockhausen 2002). Cull rings are used in crab pots throughout the tributaries and mainstem of the lower portion of Chesapeake Bay and in the mainstem of the upper portion of the Bay, which allows smaller adult females (i.e. < 140 mm carapace width) to escape pots, while larger females are captured in the crab pots (Guillory & Hein 1998). The sizes of crabs tagged inside and outside of the sanctuary did not differ significantly in 2002 and 2003, but in 2004 females tagged inside the sanctuary were significantly smaller than those tagged outside (Table 2). If smaller females had a lower probability of recapture by the fishery (Guillory & Hein 1998, Lipcius & Stockhausen 2002), then the relative risk estimates may have been biased high in favor of the sanctuary in 2004.

Although the blue crab sanctuary is effective in protecting female crabs that have entered its borders, the sanctuary and various exploitation controls have not protected a sufficiently large fraction of the population (Seitz et al. 2001) to avert the 84 % decline in spawning stock biomass (Lipcius & Stockhausen 2002), sustained low abundances (Chesapeake Bay Stock Assessment Committee 2005), and low annual survival rates (Lambert et al. 2005). There is thus a pressing need to enhance restoration efforts of the spawning stock for long-term, sustainable exploitation and population persistence of the blue crab in Chesapeake Bay. High fishing mortality of blue crab females outside of the sanctuary likely precludes sufficient numbers of mature females from successfully migrating to the spawning sanctuary, therefore limiting the benefits of the seasonal closure. The current management regime must be altered to increase the numbers of mature females entering the spawning sanctuary, through a combination of extended spatial management zones encompassing migration corridors and nursery grounds, as well as effort reductions in fished areas. In addition, expansion of the sanctuary through November and into the upper Bay would protect those females migrating from the upper portions of the Bay (Turner et al. 2003, Aguilar et al. 2005), while expanding it through April and into the upper Bay would protect females that have overwintered either in deep-water migration corridors or in the spawning grounds and will produce their first egg mass in the spring (Van Engel 1958, Millikin & Williams 1984).

LITERATURE CITED

- Aguilar R, Hines AH, Wolcott TG, Wolcott DL, Kramer MA, Lipcius RN (2005) The timing and route of movement and migration of post-copulatory female blue crabs, *Callinectes sapidus* Rathbun, from the upper Chesapeake Bay. *J Exp Mar Biol Ecol* 319:117-128
- Anonymous (2003) The Blue Crab 2003: Status of the Chesapeake population and its fisheries. Blue Crab Technical Work Group. Chesapeake Bay Commission, Annapolis, MD
- Anonymous (2004) North Carolina Blue Crab Fishery Management Plan. North Carolina Department of Natural Resources, Division of Marine Fisheries, Raleigh, NC
- Attwood CG, Bennett BA (1994) Variation in dispersal of Galjoen (*Coracinus capensis*) (Teleostei: Coracinidae) from a marine reserve. *Can J Fish Aquat Sci* 51:1247-1257
- Beets J, Friedlander A (1992) Stock analysis and management strategies for red hind, *Epinephelus guttatus*, in the U.S. Virgin Islands. *Proc Gulf Caribb Fish Inst* 42:66-79
- Beets J, Friedlander A (1998) Evaluation of a conservation strategy: a spawning aggregation closure for red hind, *Epinephelus guttatus*, in the U.S. Virgin Islands. *Environ Biol Fish* 55:91-98
- Bertelsen RD, Cox C (2001) Sanctuary roles in population and reproductive dynamics of Caribbean spiny lobster. In: Kruse GH, Bez N, Booth A, Dorn MW, Hills S, Lipcius RN, Pelletier D, Roy C, Smith SJ, Witherell D (eds) Spatial processes and management of marine populations. AK-SG-01-02, University of Alaska Sea Grant, Fairbanks, AK, p 591-605
- Bonzek CF, Latour RJ, Gartland J (2004) Chesapeake Bay Multispecies Monitoring Program. Chesapeake Bay Fisheries Research Program Symposium Report 2003. NOAA Chesapeake Bay Office, Annapolis, MD
- Brumbaugh RD, Sorabella LA, Garcia CO, Goldsborough W, Wesson JA (2000) Making a case for community-based oyster restoration: An example from Hampton Roads, Virginia, USA. *J Shellfish Res* 19:467-472
- Chesapeake Bay Stock Assessment Committee (2005) 2005 Chesapeake Bay blue crab advisory report. NOAA Chesapeake Bay Office, Annapolis, MD
- Chiappone M, Sealey KMS (2000) Marine reserve design criteria and measures of success: Lessons learned from the Exuma Cays Land and Sea Park, Bahamas. *Bull Mar Sci* 66:691-705
- Chiappone M, Sluka R, Sealey KS (2000) Groupers (Pisces: Serranidae) in fished and protected areas of the Florida Keys, Bahamas and northern Caribbean. *Mar Ecol Prog Ser* 198:261-272
- Churchill Jr. EP (1919) Life history of the Blue Crab. *Bulletin of the US Bureau of Fisheries* 36:91-134
- Coleman FC, Baker PB, Koenig CC (2004) A review of Gulf of Mexico marine protected areas: Successes, failures, and lessons learned. *Fisheries* 29:10-21
- Cronin LE (1949) Comparison of methods of tagging the blue crab. *Ecology* 30:390-394
- Daniel WW (1999) *Biostatistics: A Foundation for Analysis in the Health Sciences*. John Wiley & Sons, Inc, New York

- Davis GE, Dodrill JW (1980) Marine parks and sanctuaries for spiny lobster fishery management. Proc Gulf Caribb Fish Inst 32:194-207
- Davis GE, Dodrill JW (1989) Recreational fishery and population dynamics of spiny lobster, *Panulirus argus*, in Florida Bay, Everglades National Park, 1977-1980. Bull Mar Sci 44:78-88
- Delgado GA, Bartels CT, Glazer RA (2004) Translocation as a strategy to rehabilitate the queen conch (*Strombus gigas*) population in the Florida Keys. Fish Bull 102:278-288
- Dugan JE, Davis GE (1993) Applications of marine refugia to coastal fisheries management. Can J Fish Aquat Sci 50:2029-2042
- Fiedler R (1930) Solving the question of crab migrations. Fishing Gazette 47:18-21
- Fischler KJ (1965) The use of catch-effort, catch-sampling, and tagging data to estimate a population of blue crabs. Trans Am Fish Soc 94:287-310
- Fischler KJ, Walburg CH (1962) Blue crab movement in Coastal South Carolina, 1958-59. Trans Am Fish Soc 91:275-278
- Gitschlag GR (1986) Movement of pink shrimp in relation to the Tortugas sanctuary. North Am J Fish Manage 6:328-338
- Guenette S, Pitcher TJ, Walters CJ (2000) The potential for marine reserves for the management of northern cod in Newfoundland. Bull Mar Sci 66:831-852
- Guillory V, Hein S (1998) A review and evaluation of escape rings in blue crab traps. J Shellfish Res 17:551-559
- Heslinga GA, Orak O, Ngiramengior M (1984) Coral reef sanctuaries for trochus shells. Mar Fish Rev 46:73-80
- Hines AH, Wolcott TG, González-Gurriarán E, González-Escalante JL, Freire J (1995) Movement patterns and migration in crabs: telemetry of juvenile and adult behaviour in *Callinectes sapidus* and *Maja squinado*. J Mar Biol Assoc UK 75:27-42
- Joe M (2001) Stage-structure tag-return and capture-recapture models. PhD dissertation, North Carolina State University, Raleigh, NC
- Jones CM, McConaugha JR, Geer PJ, Prager MH (1990) Estimates of spawning stock size of Blue Crab, *Callinectes sapidus*, in Chesapeake Bay, 1986-1987. Bull Mar Sci 46:159-169
- Judy MH, Dudley DL (1970) Movements of tagged blue crabs in North Carolina waters. Commer Fish Rev 32:29-35
- Kassner J, Malouf RE (1982) An evaluation of "spawner transplants" as a management tool in Long Island's hard clam fishery. J Shellfish Res 2:165-172
- Lambert DM, Hoenig JM, Lipcius RN, Hepworth DA, Fegley L (2005) Tagging studies of blue crabs in Chesapeake Bay. Chesapeake Bay Integrated Research Program Symposium Report FY 2004. NOAA Chesapeake Bay Office, Annapolis, MD, p 137-144
- Latour RJ, Brush MJ, Bonzek CF (2003) Toward ecosystem-based fisheries management: strategies for multispecies modeling and associated data requirements. Fisheries 28:10-22
- Lipcius RN, Crowder LB, Morgan LE (2005) Metapopulation structure and the enhancement of exploited species by marine reserves. In: Norse EA, Crowder LB

- (eds) Marine conservation biology: the science of maintaining the sea's biodiversity. Island Press, Washington, p 328-345
- Lipcius RN, Seitz RD, Goldsborough WJ, Montane MM, Stockhausen WT (2001b) A deep-water dispersal corridor for adult female blue crabs in Chesapeake Bay. In: Kruse GH, Bez N, Booth A, Dorn MW, Hills S, Lipcius RN, Pelletier D, Roy C, Smith SJ, Witherell D (eds) Spatial processes and management of marine populations. AK-SG-01-02, University of Alaska Sea Grant, Fairbanks, AK, p 643-666
- Lipcius RN, Stockhausen WT (2002) Concurrent decline of the spawning stock, recruitment, larval abundance, and size of the blue crab *Callinectes sapidus* in Chesapeake Bay. Mar Ecol Prog Ser 226:45-61
- Lipcius RN, Stockhausen WT, Eggleston DB (2001a) Marine reserves for Caribbean spiny lobster: empirical evaluation and theoretical metapopulation recruitment dynamics. Mar Freshwater Res 52:1589-1598
- Lipcius RN, Stockhausen WT, Seitz RD, Geer PJ (2003) Spatial dynamics and value of a marine protected area and corridor for the blue crab spawning stock in Chesapeake Bay. Bull Mar Sci 72:453-469
- McCay M (1988) Muddling through the clam beds: cooperative management of New Jersey's hard clam spawner sanctuaries. J Shellfish Res 7:327-340
- McConaugha JR (1993) Tag-recapture study of the spawning stock of Chesapeake Bay blue crabs. Final Report to NOAA/NMFS for project: NA89EA-H-00060.
- McGarvey R (2004) Estimating the emigration rate of fish stocks from marine sanctuaries using tag-recovery data. Fishery Bulletin 102:464-472
- Medici DA (2004) Scale dependent movements and protection of the female blue crab, *Callinectes sapidus*. MS, North Carolina State University, Raleigh, NC
- Miller TJ, Nye JA, Curti K, Loewensteiner D, Houde ED, Christman MC, Volstad JH, Sharov AF (2004) Abundance, distribution and diversity of Chesapeake Bay Fishes: Results from CHESFIMS (Chesapeake Bay Fishery Independent Multispecies Fisheries Survey). Chesapeake Bay fisheries research program symposium report fiscal year 2004. NOAA Chesapeake Bay Office, Annapolis, MD, p 21-34
- Millikin MR, Williams AB (1984) Synopsis of biological data on the blue crab, *Callinectes sapidus* Rathbun, NOAA, NOAA Technical Report NMFS 1, FAO Fisheries Synopsis No. 138
- Montane MM, Lowery WA, Austin HM (2004) Estimating relative juvenile abundance of ecologically important finfish and invertebrates in the Virginia portion of Chesapeake Bay, Project # NA03NMF4570378, June 2003 - May 2004. Annual Report to NOAA Chesapeake Bay Office, Annapolis, MD, by Virginia Institute of Marine Science, Gloucester Pt., VA
- Newcombe CL (1943) Report of the Virginia Fisheries Laboratory of the College of William and Mary and the Commission of Fisheries of Virginia for the period July 1, 1941 - June 30, 1943. Division of purchase and printing, Richmond, VA
- NRC (National Research Council) (2001) Marine protected areas: tools for sustaining ocean ecosystems. NRC, National Academy of Sciences, National Academy Press, Washington, D.C.

- Oesterling MJ (1976) Reproduction, growth, and migration of blue crabs along Florida's Gulf Coast. University of Florida. Florida Sea Grant Publication. SUSF-SG-76-003
- Polacheck T (1990) Year round closed areas as a management tool. *Natural Resources Modeling* 4:327-354
- Prager MH (1996) A simple model of the Blue Crab, *Callinectes sapidus*, spawning migration in Chesapeake Bay. *Bull Mar Sci* 58:421-428
- Roberts CM, Polunin NVC (1991) Are marine reserves effective in management of reef fisheries? *Rev Fish Biol Fish* 1:65-91
- Rowe S (2001) Movement and harvesting mortality of American lobsters (*Homarus americanus*) tagged inside and outside no-take reserves in Bonavista Bay, Newfoundland. *Can J Fish Aquat Sci* 58:1336-1346
- Rowe S (2002) Population parameters of American lobster inside and outside no-take reserves in Bonavista Bay, Newfoundland. *Fish Res* 56:167-175
- Rowley RJ (1994) Marine reserves in fisheries management. *Aquat Conserv Mar Freshw Ecosyst* 4:233-254
- Rugolo LJ, Knotts KS, Lange AM, Crecco VA (1998) Stock assessment of Chesapeake Bay blue crab (*Callinectes sapidus* Rathbun). *J Shellfish Res* 17:493-517
- Sandoz M (1943) Steps toward conservation in Chesapeake Bay. *The Commonwealth* 10:1-6
- Sandoz M, Rogers R (1944) The effect of environmental factors on hatching, moulting, and survival of zoea larvae of the blue crab, *Callinectes sapidus* Rathbun. *Ecology* 25:216-228
- Seitz RD, Lipcius RN, Stockhausen WT, Montane MM (2001) Efficacy of blue crab spawning sanctuaries in Chesapeake Bay. In: Kruse GH, Bez N, Booth A, Dorn MW, Hills S, Lipcius RN, Pelletier D, Roy C, Smith SJ, Witherell D (eds) *Spatial Processes and Management of Marine Populations*. AK-SG-01-02, University of Alaska Sea Grant, Fairbanks, AK, p 607-626
- Southworth M, Mann R (1998) Oyster reef broodstock enhancement in the Great Wicomico River, Virginia. *J Shellfish Res* 17:1101-1114
- Tagatz ME (1968) Biology of the blue crab, *Callinectes sapidus* Rathbun, in the St. Johns River, Florida. *Fish Bull* 67:17-33
- Tegner MJ (1992) Brood-stock transplants as an approach to abalone stock enhancement. In: Shepherd S, Tegner M, Guzman del Proo S (eds) *Abalone of the World: Biology, fisheries and culture*. Blackwell Scientific Publications, Oxford, UK, p 461-473
- Turner HV, Wolcott DL, Wolcott TG, Hines AH (2003) Post-mating behavior, intramolt growth, and onset of migration to Chesapeake Bay spawning grounds by adult female blue crabs, *Callinectes sapidus* Rathbun. *J Exp Mar Biol Ecol* 295:107-130
- Van Engel WA (1958) The blue crab and its fishery in Chesapeake Bay. Part1: Reproduction, early development, growth, and migration. *Commer Fish Rev* 20:6-17

Table 1. *Callinectes sapidus*. Number of adult female blue crabs tagged and recaptured, percent recaptured, relative risk (95% Confidence Interval), Chi-square test statistic (X^2) ($\chi_{1,0.95}^2 = 3.84$) and corresponding significance levels (p) for crabs tagged and released outside and inside of the spawning sanctuary between 1 June and 15 July and recaptured during the time that the sanctuary is in effect, for 2002, 2003, and 2004.

Year	Tagging location	Number tagged	Number recaptured	% recaptured	Relative risk	X^2	p
2002	outside	168	35	21	6.3 (2.4, 16.3)	14.5	<0.0005
	inside	91	3	3			
	total	259	38	15			
2003	outside	125	15	12	5.2 (0.9, 29.0)	3.5	0.06
	inside	43	1	2			
	total	168	16	10			
2004	outside	209	37	18	2.8 (1.6, 5.0)	12.8	0.0003
	inside	207	13	6			
	total	416	50	12			

Table 2. *Callinectes sapidus*. Mean size (carapace width) and standard error (SE) of adult female blue crabs tagged and released outside and inside of the spawning sanctuary between 1 June and 15 July. The sample sizes (N) may vary somewhat from those listed in Table 1 because some crabs were not measured.

Year	Location	N	Mean size (mm)	SE	p
2002	outside	162	137.1	1.2	0.719
	inside	33	136.1	3.0	
2003	outside	124	141.4	1.3	0.228
	inside	43	138.5	1.9	
2004	outside	209	148.4	1.4	<0.0005
	inside	207	138.8	1.1	

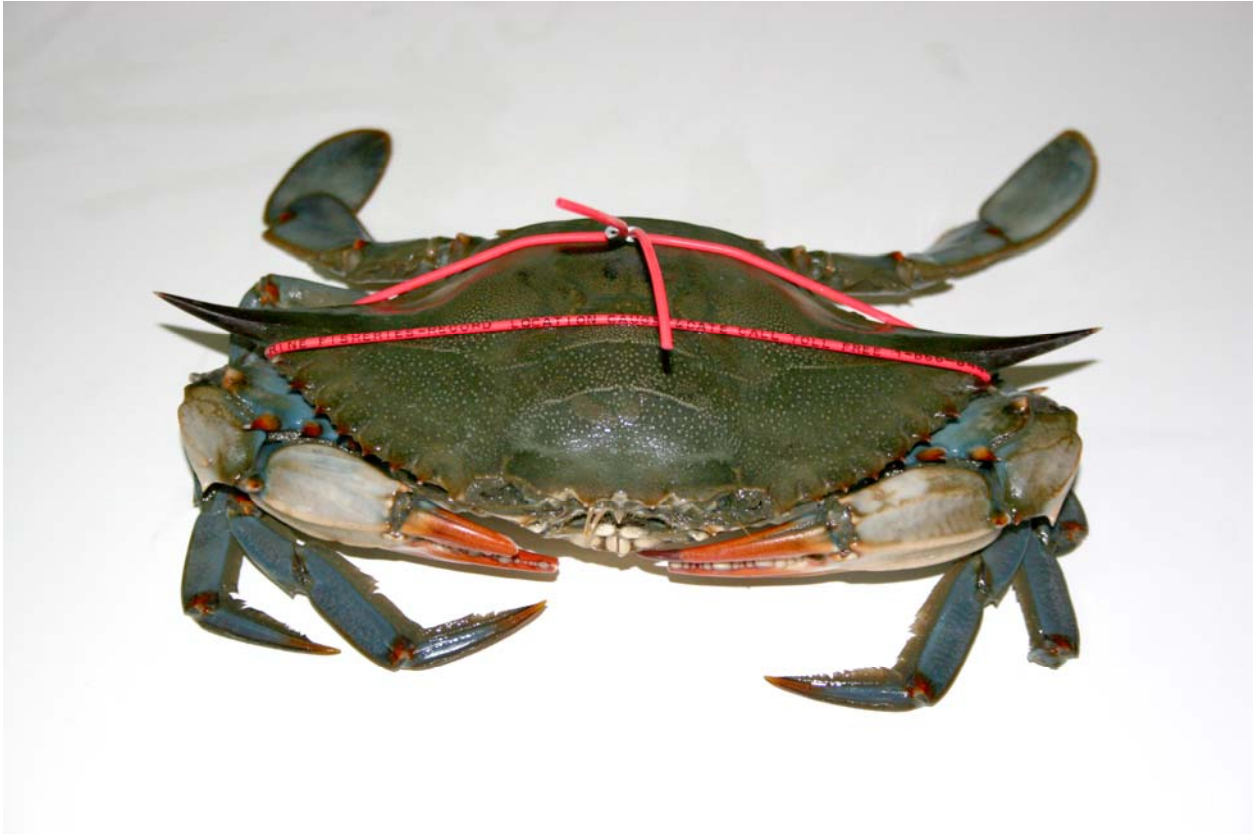


Figure 1. Mature blue crab female with tag attached.

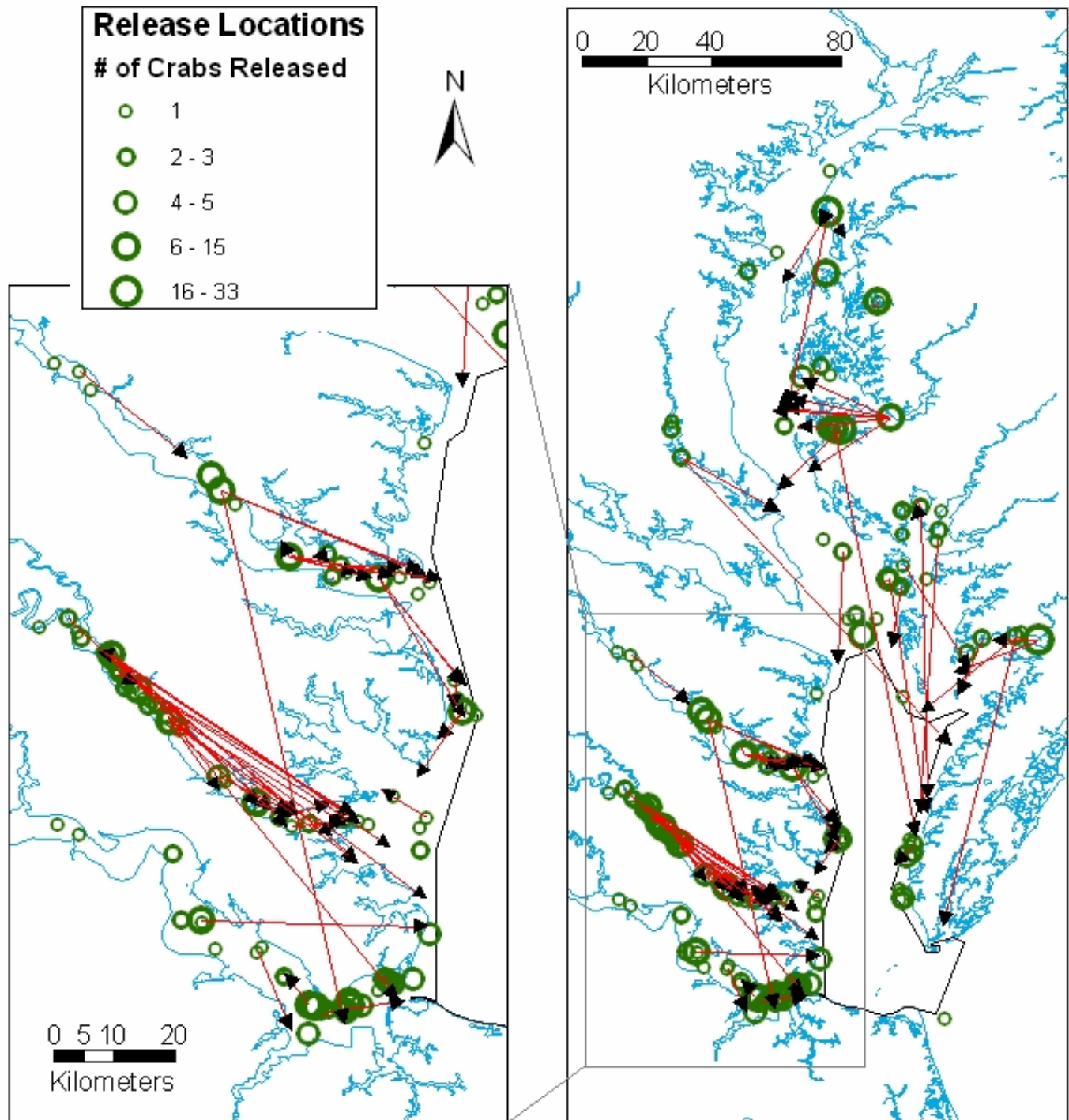


Figure 2. Map of release locations of mature female crabs tagged outside of the spawning sanctuary between 1 June – 15 July of 2002, 2003, and 2004. The size of the circles refers to the number of crabs released at each location. Lines with arrows indicate the recapture locations of individual crabs.

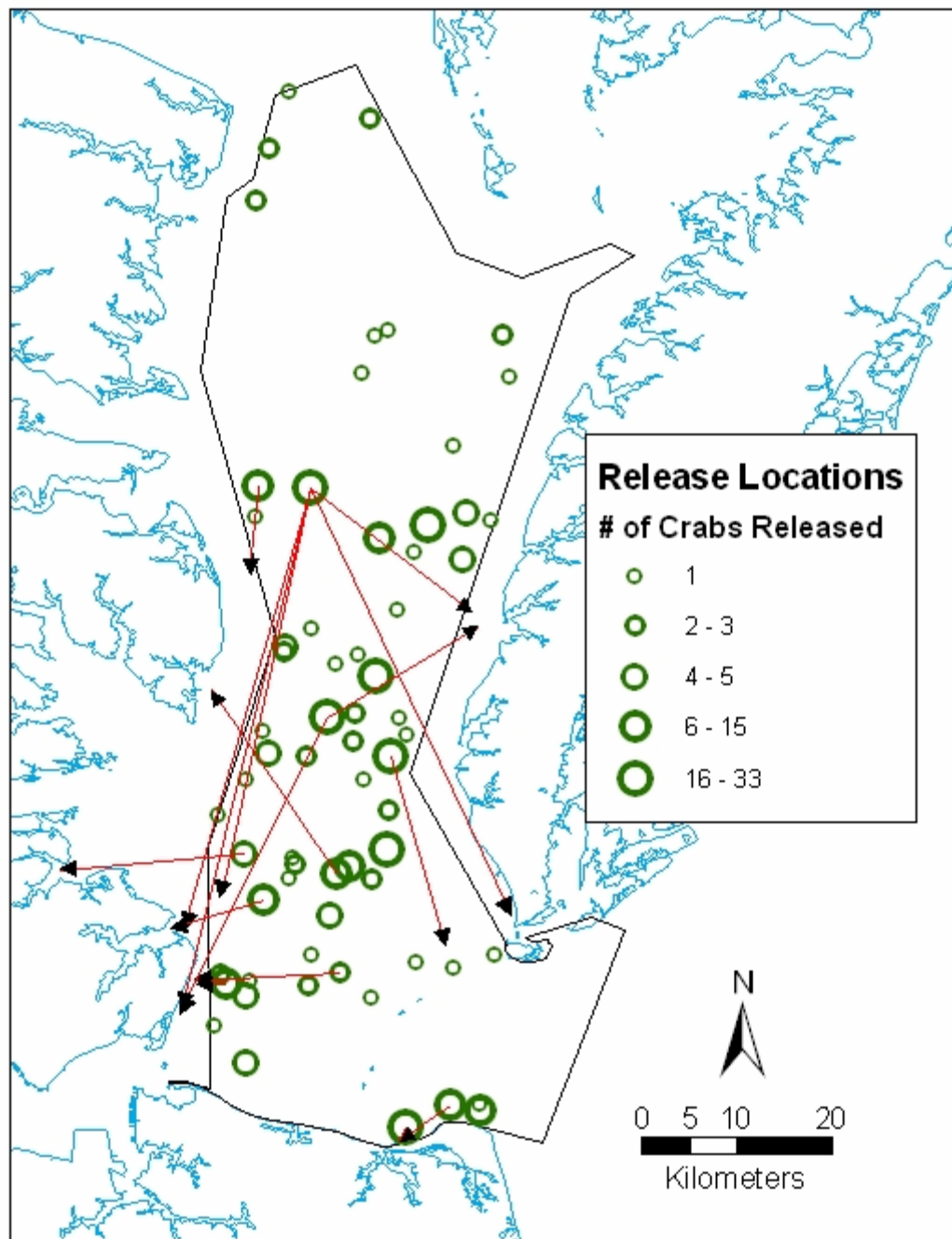


Figure 3. Map of release locations of mature female crabs tagged inside of the spawning sanctuary between 1 June – 15 July of 2002, 2003, and 2004. The size of the circles refers to the number of crabs released at each location. Lines with arrows indicate the recapture locations of individual crabs. The black outlined area represents the blue crab spawning sanctuary.

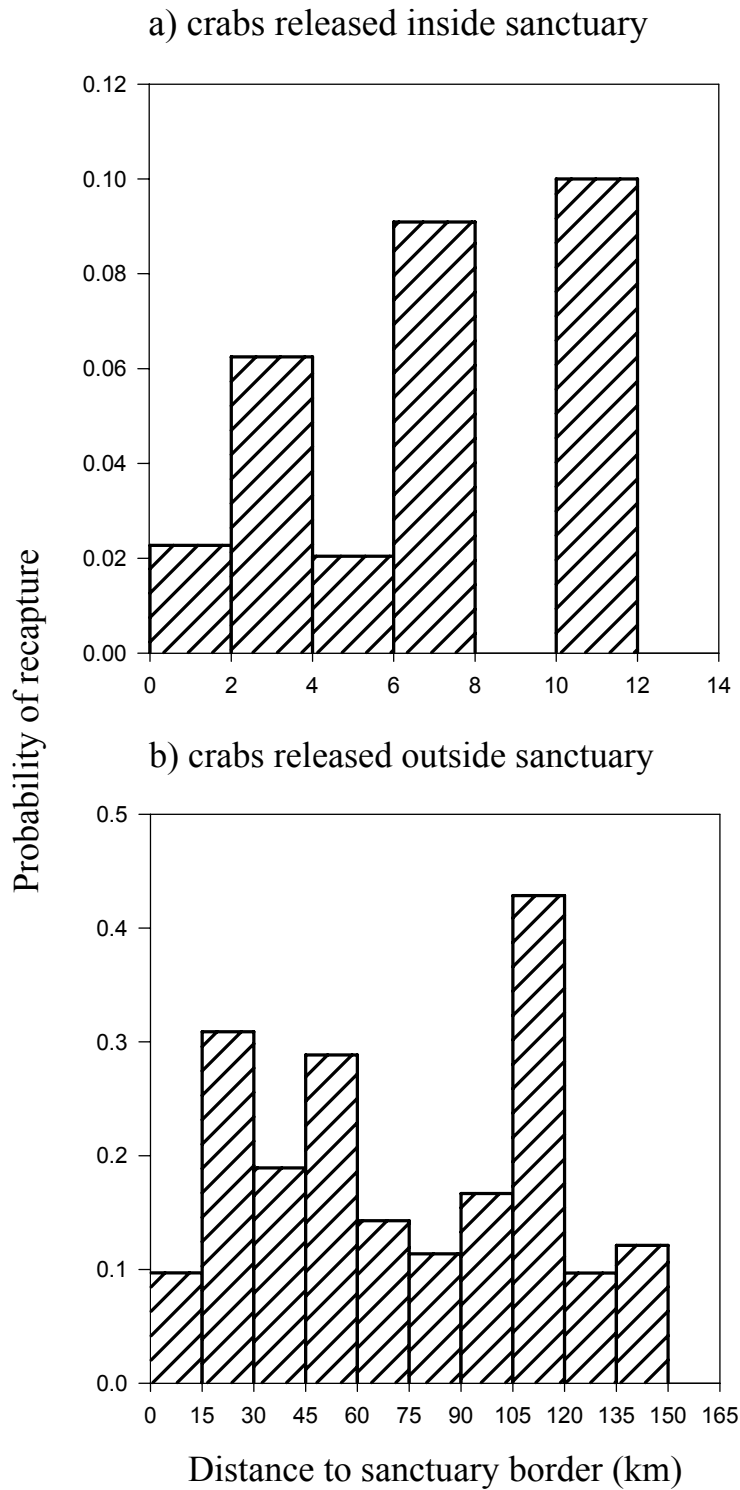


Figure 4. Recapture probability of tagged crabs in relation to the distance to sanctuary border at release for crabs (a) released inside and (b) released outside of the spawning sanctuary.