

4-2013

Designing Costumes for The King Stag

Sarah Hanson

Follow this and additional works at: http://digitalcommons.morris.umn.edu/urs_2013



Part of the [Theatre and Performance Studies Commons](#)

Recommended Citation

Hanson, Sarah, "Designing Costumes for The King Stag" (2013). *Undergraduate Research Symposium 2013*. Book 1.
http://digitalcommons.morris.umn.edu/urs_2013/1

This Book is brought to you for free and open access by the Undergraduate Research Symposium at University of Minnesota Morris Digital Well. It has been accepted for inclusion in Undergraduate Research Symposium 2013 by an authorized administrator of University of Minnesota Morris Digital Well. For more information, please contact skulann@morris.umn.edu.

Designing Costumes for *The King Stag*

UNIVERSITY OF MINNESOTA
MORRIS

Sarah Hanson
Advisor: Siobhan Bremer
Theatre Arts

My research comes from three places: Commedia dell' Arte style theatre, medieval period clothing, and current children's movies. The costumes for the University of Minnesota, Morris spring children's show *The King Stag* are unique and imaginative in order to ensure that the show is as magical as possible for the children who attend. This show is a fairy tale about King Seren searching for a Queen who really loves him. When King Seren finds his love, the jealous Prime Minister casts a spell turning King Seren into a stag and himself into the king. Chaos breaks out in the kingdom but eventually everything is sorted out. The original intent of this script was to be performed in the Commedia dell' Arte style, which originated in Italy in the 16th century and was characterized by masked "types," but our pre-production discussions at UMM led us to a less traditional approach. The director of *The King Stag* liked the look of movies with three-dimensional animations made by companies such as Pixar or DreamWorks, so much of my inspiration designing these costumes comes from *Brave* and *Shrek*, as well as other classic Disney movies such as *Snow White*. The style of these costumes loosely reflects the setting in medieval England, but the costumes also include unexpected elements to add to the spectacle. My designs reflect elements from a combination of all these areas.

King Seren



A Medieval King Halloween costume
<http://www.halloweencostumes.com/noble-king-costume.html>

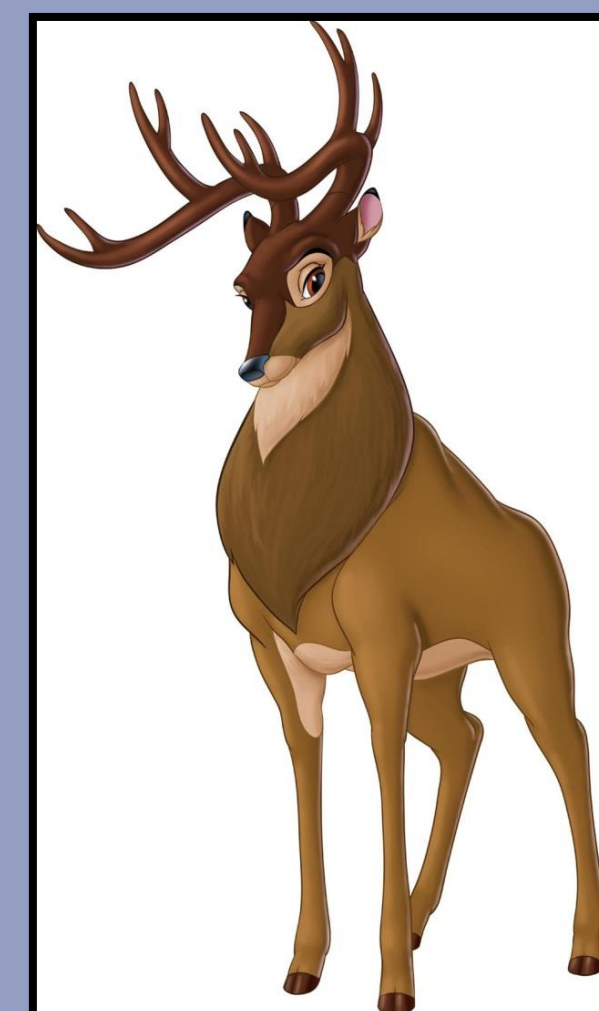


Rendering

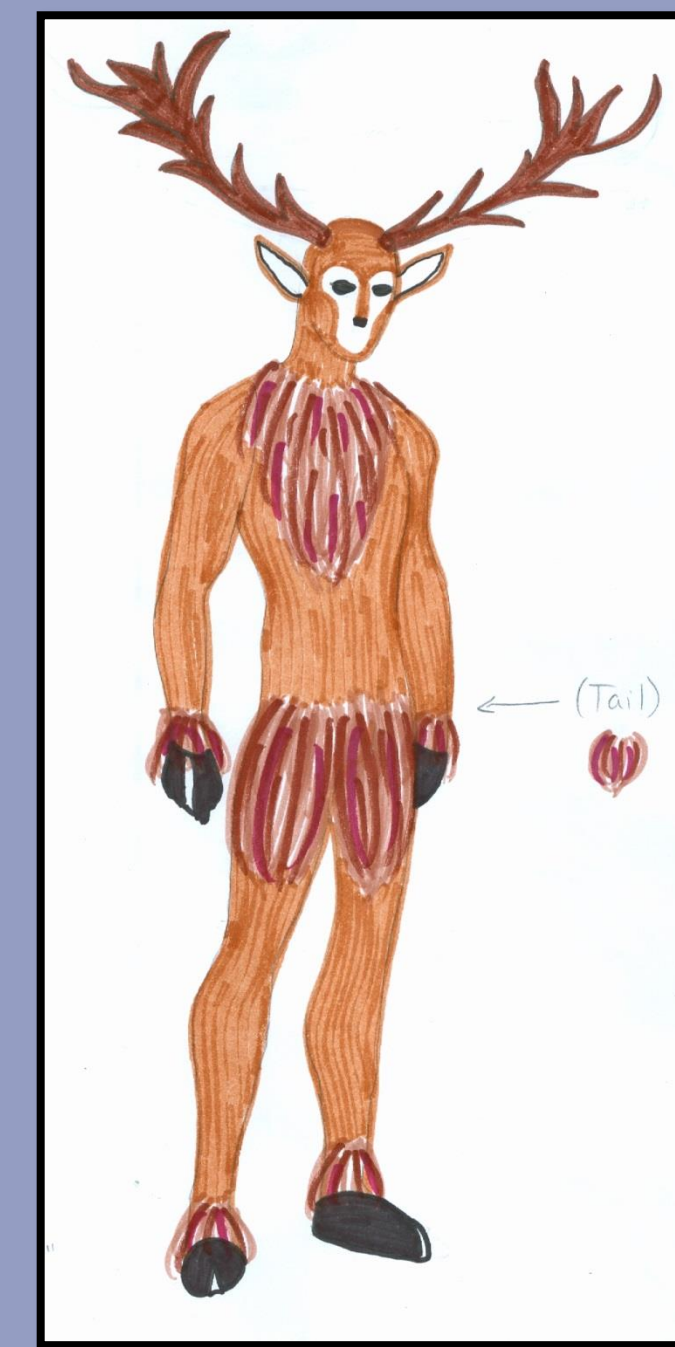


Completed Costume

Stags



The Great Prince, from Disney's *Bambi*
http://disney.wikia.com/wiki/The_Great_Prince_of_the_Forest



Rendering

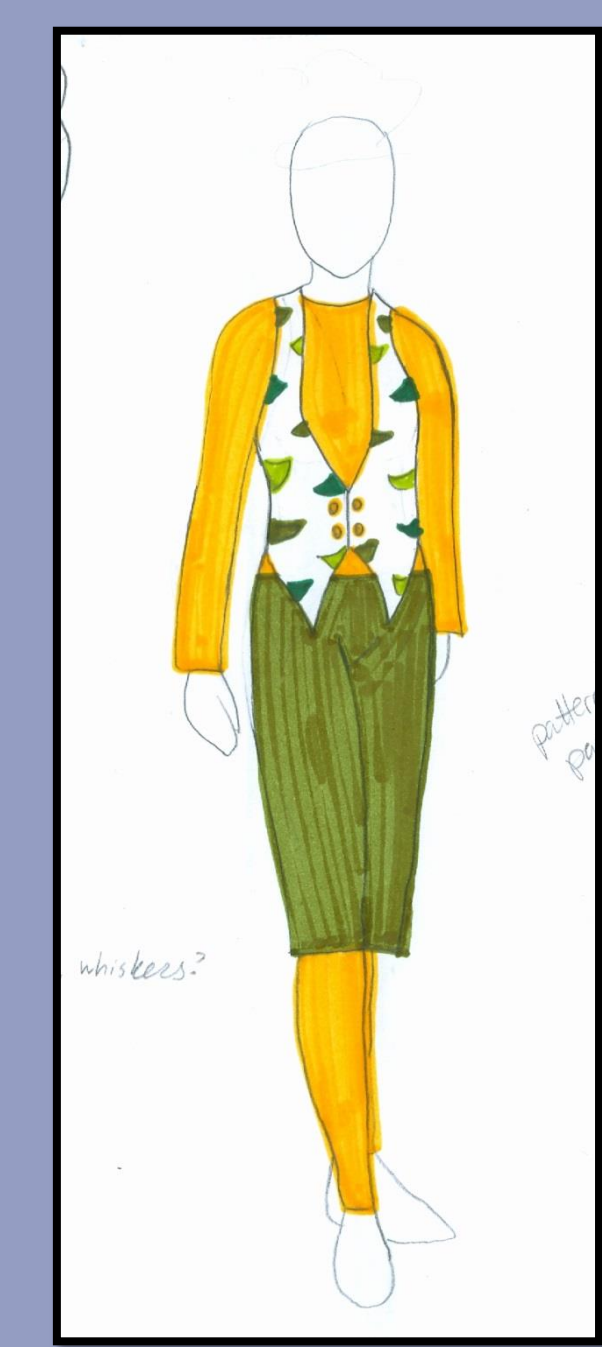


Completed Costume

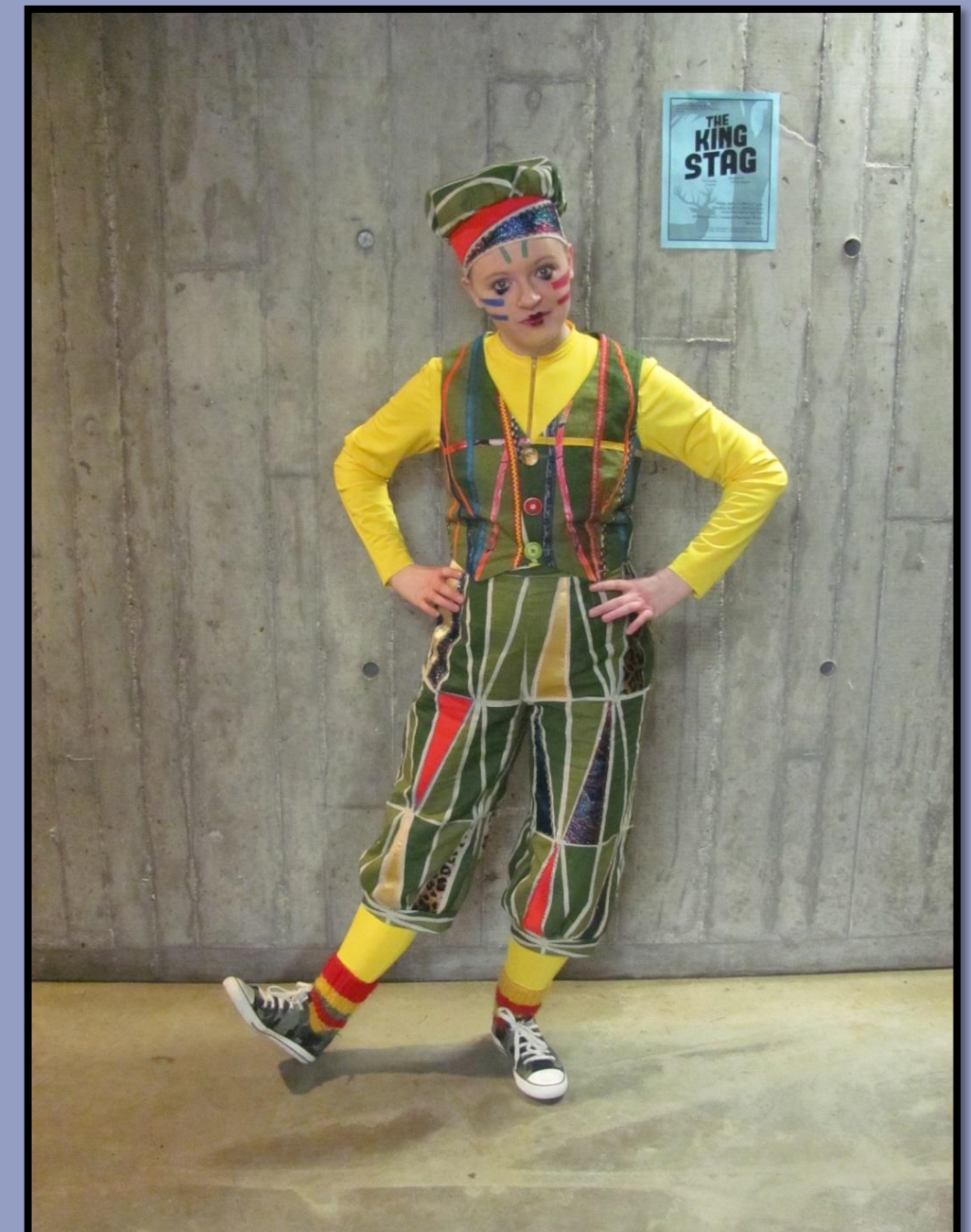
Truffles



Harlequin, the servant and trickster in Commedia dell' Arte
<http://mammonster-centerblog.net/rub-antiquite-la-commedia-de-larte-3.html>



Rendering



Completed Costume

Periglio



Jafar, from Disney's *Aladdin*
<http://disney.wikia.com/wiki/Jafar>

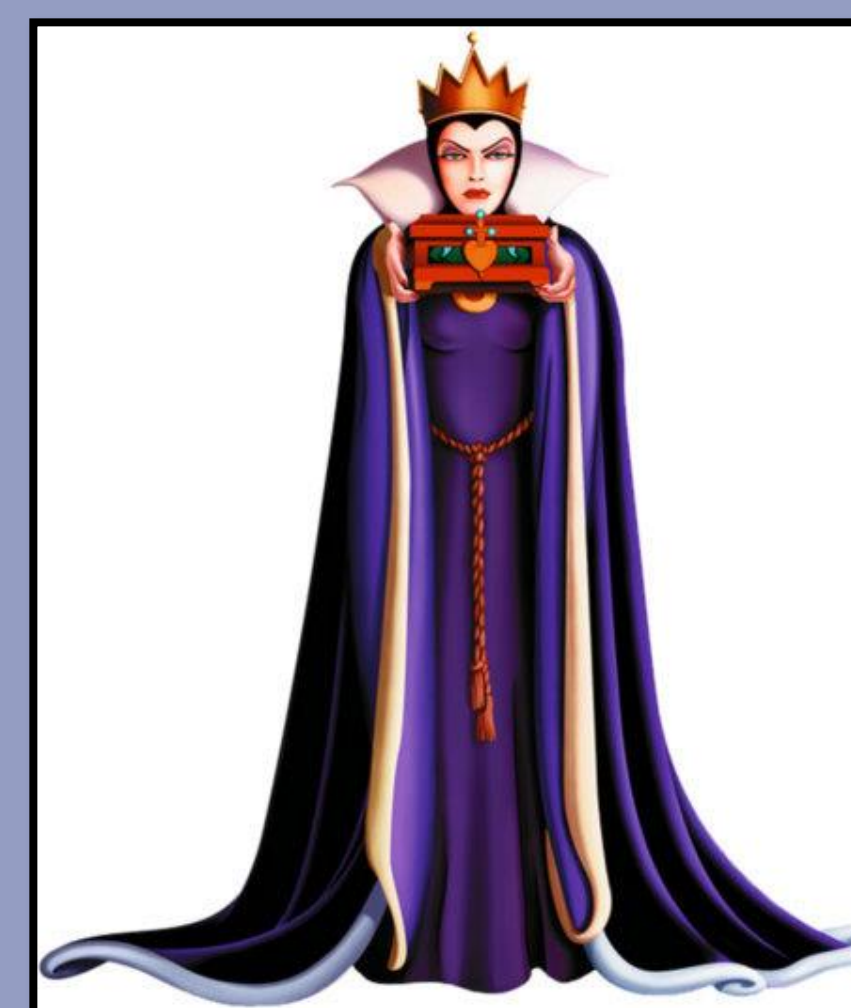


Rendering

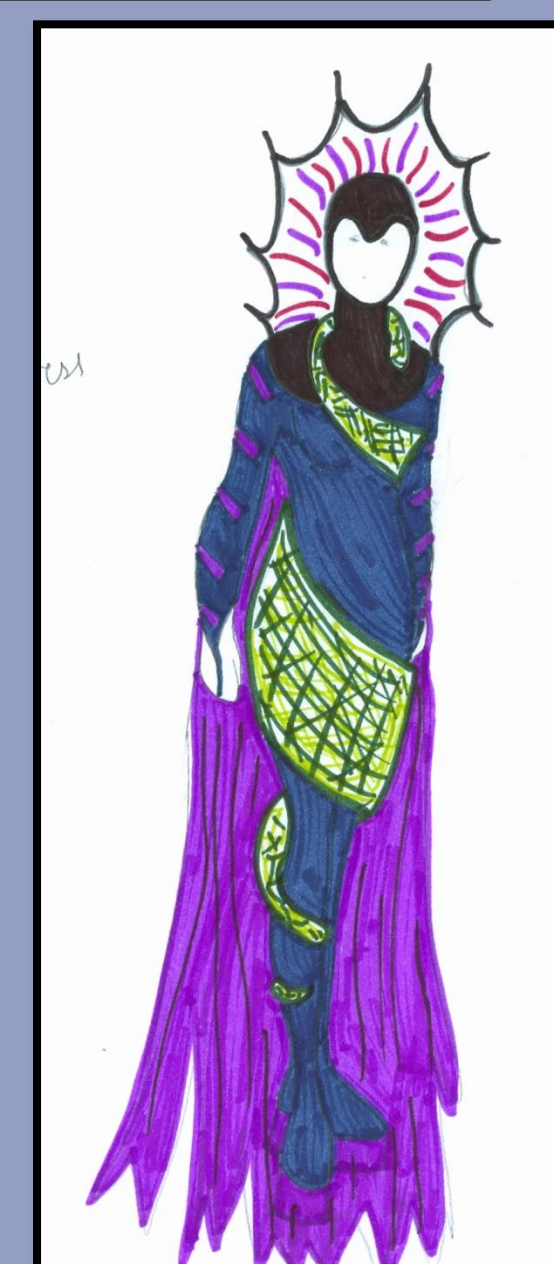


Completed Costume

Mistress of Shadows



The Evil Queen, from Disney's *Snow White*
http://disney.wikia.com/wiki/The_Evil_Queen



Rendering

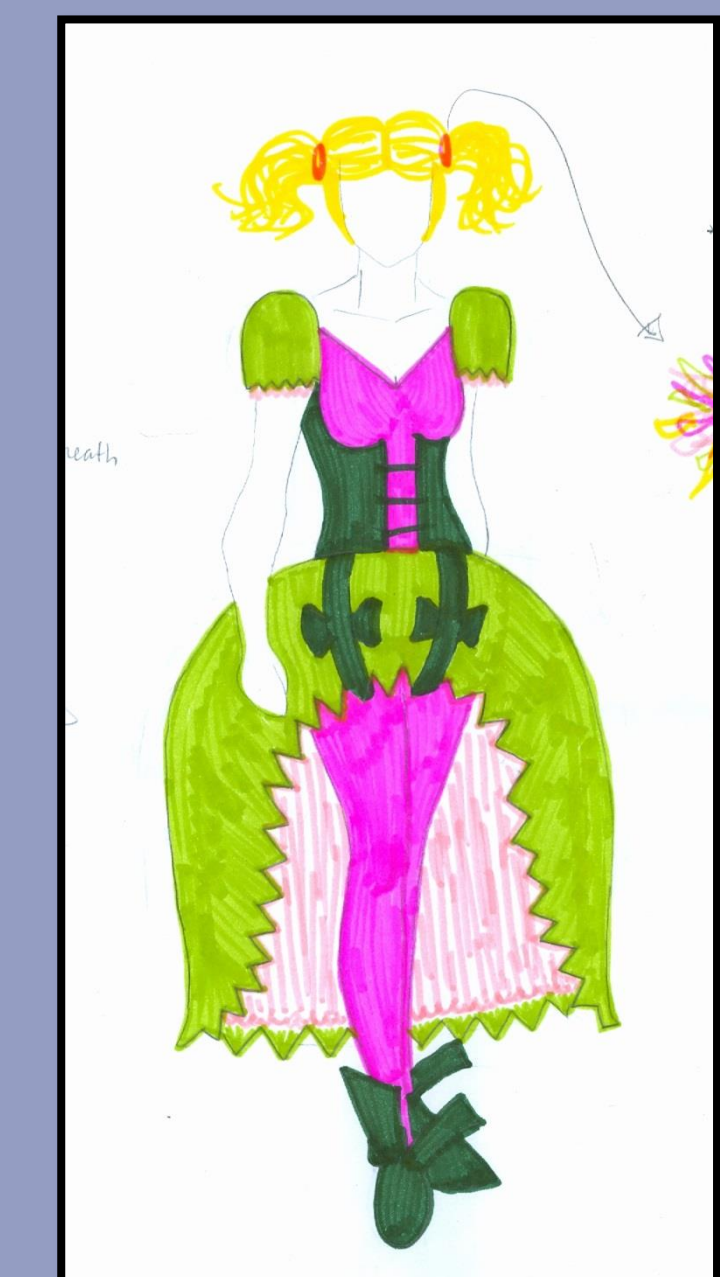


Completed Costume

Emmi



Colombina, a comic servant in Commedia dell' Arte
<http://www.clubantiquari.org/maschere/artecchina.htm>



Rendering



Completed Costume

Larissa



Jasmine, from Disney's *Aladdin*
http://disney.wikia.com/wiki/Princess_Jasmine



Rendering

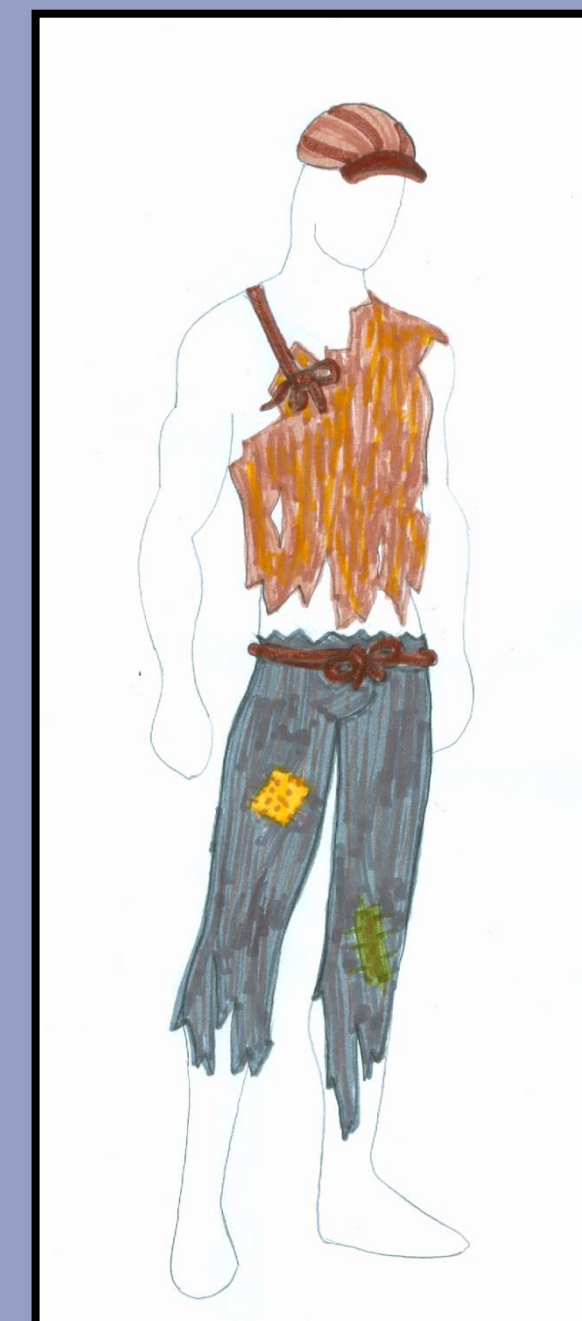


Completed Costume

Old Man



Medieval Peasant
<http://karenswhimsy.com/medieval-clothing.shtml>



Rendering

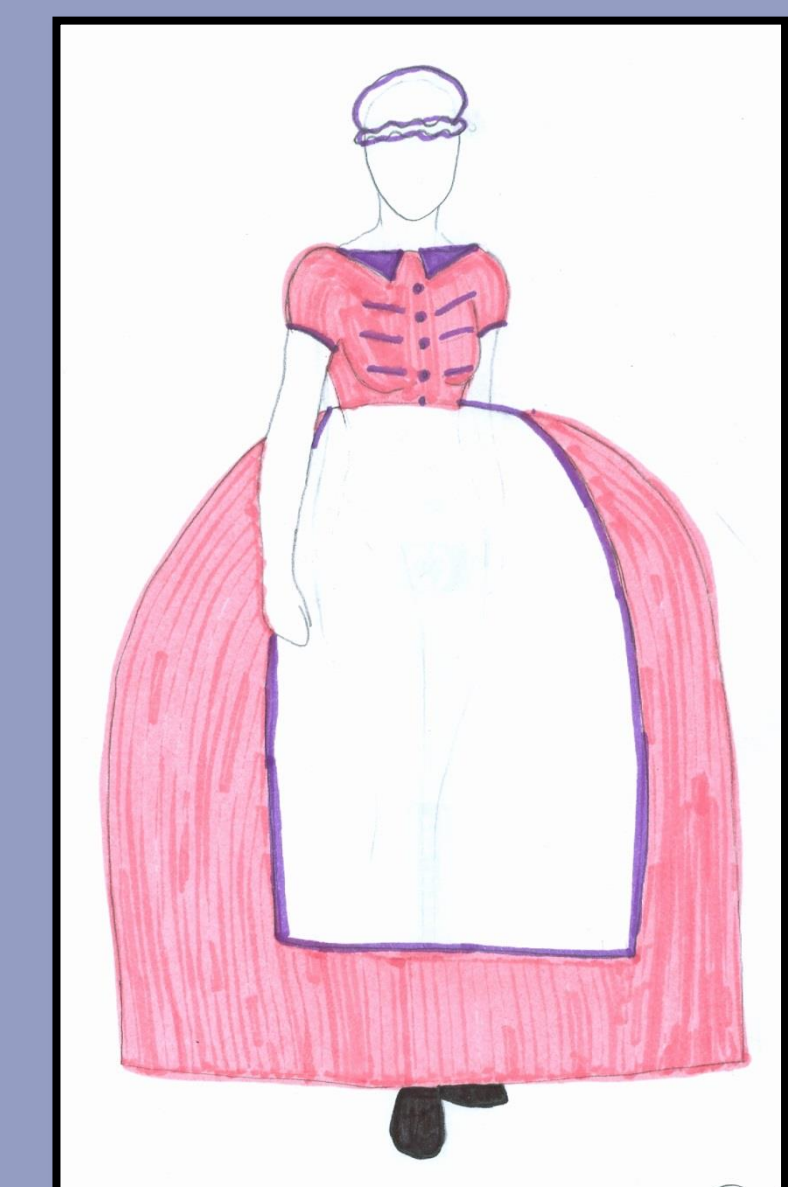


Completed Costume

Briggi



Brighella, the best of off the servants in Commedia dell' Arte
http://renaissance.mrugala.net/page_01.htm



Rendering



Completed Costume

Thank you to Liz Spohr, Rose Peterson, and the UMM costume shop staff for making these designs a reality!