



11-1904

## Bismarck, 1904

Sanborn Map Company

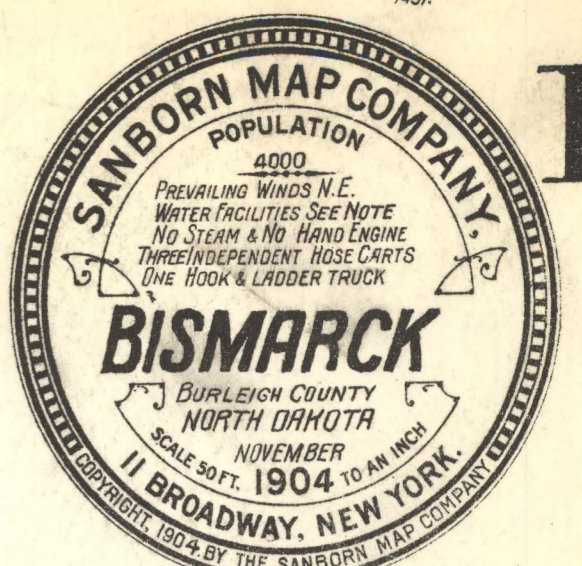
Follow this and additional works at: <https://commons.und.edu/sanborn-maps>

---

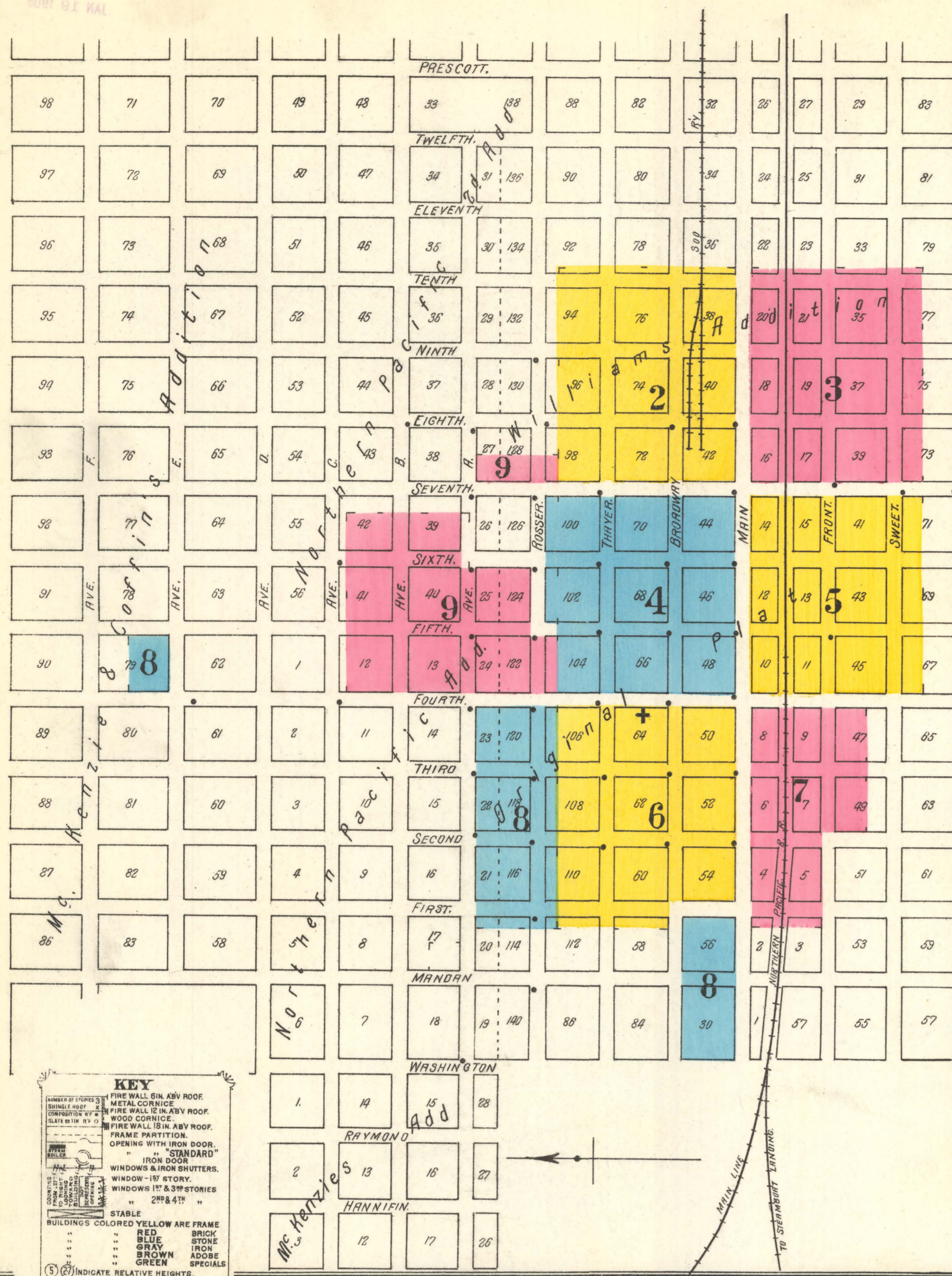
### Recommended Citation

Sanborn Map Company, "Bismarck, 1904" (1904). *Sanborn Maps of North Dakota*. 31.  
<https://commons.und.edu/sanborn-maps/31>

This Book is brought to you for free and open access by the Elwyn B. Robinson Department of Special Collections at UND Scholarly Commons. It has been accepted for inclusion in Sanborn Maps of North Dakota by an authorized administrator of UND Scholarly Commons. For more information, please contact [zeinebyousif@library.und.edu](mailto:zeinebyousif@library.und.edu).



THE LIBRARY OF CONGRESS  
This Super Received  
JAN 19 1905  
DUNSMUIR ST  
JAN 19 1905  
CLASS 693.5  
COPY A



NOTE:-  
WATER FACILITIES: WATER SUPPLY FROM MISSOURI RIVER, PUMPING STATION TWO MILES WEST OF TOWN. RESERVOIR NEARBY ON BLUFFS. DRAIN PUMPS AND 140' ABOVE MAIN ST. CAPACITY OF RESERVOIR 1,400,000 GALS. ER. BLAKE DUPLEX STEAM PUMP CAPY 1/2 MILLION GALS. PER DAY. PRESSURE ALONG MAIN ST. 80 LBS. 4 1/2 MILES OF 4" 8" 8" 10" W. MAINS 48 1/2 MYS. FIRE DEPARTMENT: VOLUNTEER, 89 MEMBERS. 3 HOSE CARTS, 8500' 2 1/2" COTTON HOSE, 1 H.B.L. TRUCK. STREETS NOT PAVED, TOWN SITE SLOPING SLIGHTLY TOWARD MISSOURI RIVER. LIGHTS: ELECT. CON. DR. FUEL WARE & CARP.

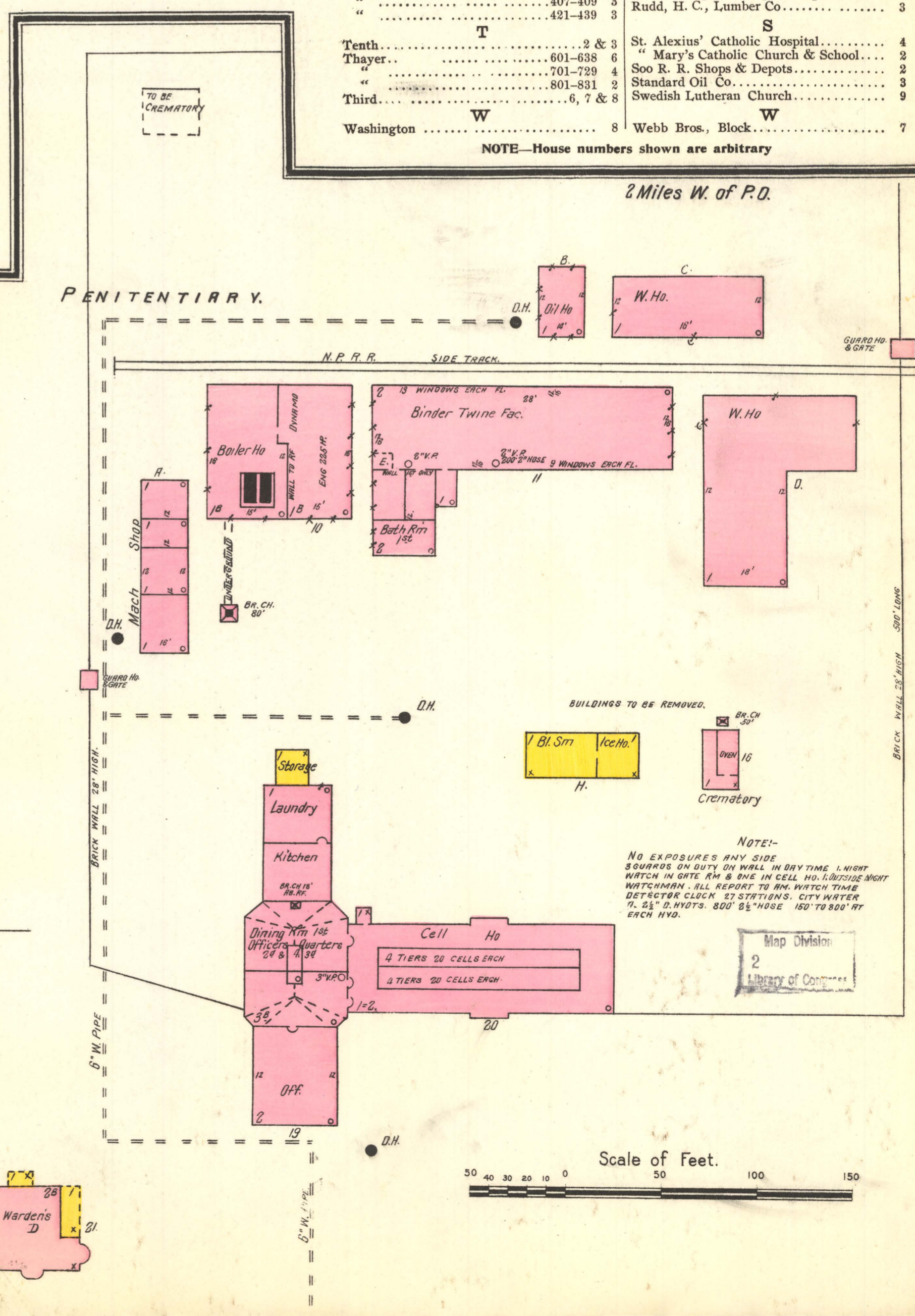
KEY  
FIRE WALL 6 IN. ASB. ROOF  
METAL CORNICE  
FIRE WALL 12 IN. ASB. ROOF  
WOOD CORNICE  
FIRE WALL 18 IN. ASB. ROOF  
FRAME PARTITION  
OPENING WITH IRON DOOR  
IRON DOOR  
STANDARD  
WINDOWS & IRON SHUTTERS  
WINDOW - 1ST STORY  
WINDOWS 1 1/2 & 3RD STORIES  
2ND & 4TH  
STABLE  
BUILDINGS COLORED YELLOW ARE FRAME  
RED BRICK  
BLUE STONE  
GRAY IRON  
BROWN ADDBE  
GREEN SPECIALS  
INDICATE RELATIVE HEIGHTS  
FIRE STATION, AS SHOWN ON KEY MAP  
ALTERNATE STREET NUMBERS ARE ACTUAL  
CONSECUTIVE STREET NOS ARE ARBITRARY

### INDEX

STREETS.	SHEET	SPECIALS	SHEET
Avenue A	A 8 & 9	Anderson Block	6
" B	9	Banner Hotel	6
Broadway	401-414 8	Baptist Church	9
"	401-615 2	Bismarck & Washburn Lumber Co.	5
"	701-711 4	" Athenaeum	4
"	712-716 2	" Elevator Co.	3
"	717-725 4	" Steam Laundry	4
"	726-729 2	" Water Works	7
"	801-810 6	Blatz, V., Beer Depot	5
"	811-814 4		
"	815-822 6	Capital City Bottling Works	4
"	823-828 4	County Court House	4
"	901-909 6		
Eighth	E 2 & 3	Daily Tribune Printing	6
Fifth	F 4, 5 & 9	Dakota Block	6
First	6, 7 & 8	Dacotah Lumber Co. Yard	3
Fourth, East Side	4, 5 & 9	Dewey Ho.	6
" West	6, 7 & 8	Episcopal Church	6
Front	301-322 7		
"	401-506 5	Fire Department, Hose Ho.	6
"	509-511 3	First National Bank Block	6
"	512-525 5	Franklin House	9
"	526-543 3		
Main	M 101-115 8	Grand Pacific Hotel	4
"	501-510 2		
"	511-520 3	Hughes Electric Light Plant	7
"	601-617 4		
"	618-623 2		
"	624-633 3	Lovin, N. H., Carp'r & Builder	4
"	634-638 3		
"	701-726 6	Methodist Episcopal Church	4
"	727-740 4	Milwaukee Brewing Co. (formerly)	7
"	741-759 7	Missouri Valley Elev'r Co.	3
"	801-802 8	" Milling Co.	3
"	802-815 6		
"	817-820 7		
Mandan	M 8	North Dakota Capitol	1
Ninth	N 2 & 3	Penitentiary	1
Rosser	R 8 & 9	N. P. R. R. Deposits	5
Second	S 6, 7 & 8	" Ice-house	3
Seventh, East Side	7, 8 & 9	" River Landing Warehouse	7
" West	4, 5 & 9	North Side School	8
Sixth	S 201-204 5	Northwest, The	5
Sweet	401-406 5	Presbyterian Church	6
"	407-409 3	Public School, Fifth Street	6
"	421-439 3		
Tenth	T 2 & 3	River Navigation Repair Shops	7
Thayer	601-638 6	Rudd, H. C., Lumber Co.	3
"	701-729 4		
"	801-821 2	St. Alexius' Catholic Hospital	4
Third	3, 6, 7 & 8	" Mary's Catholic Church & School	2
Washington	W 8	Soo R. R. Shops & Depots	2
		Standard Oil Co.	3
		Swedish Lutheran Church	9
		Webb Bros., Block	7

NOTE—House numbers shown are arbitrary

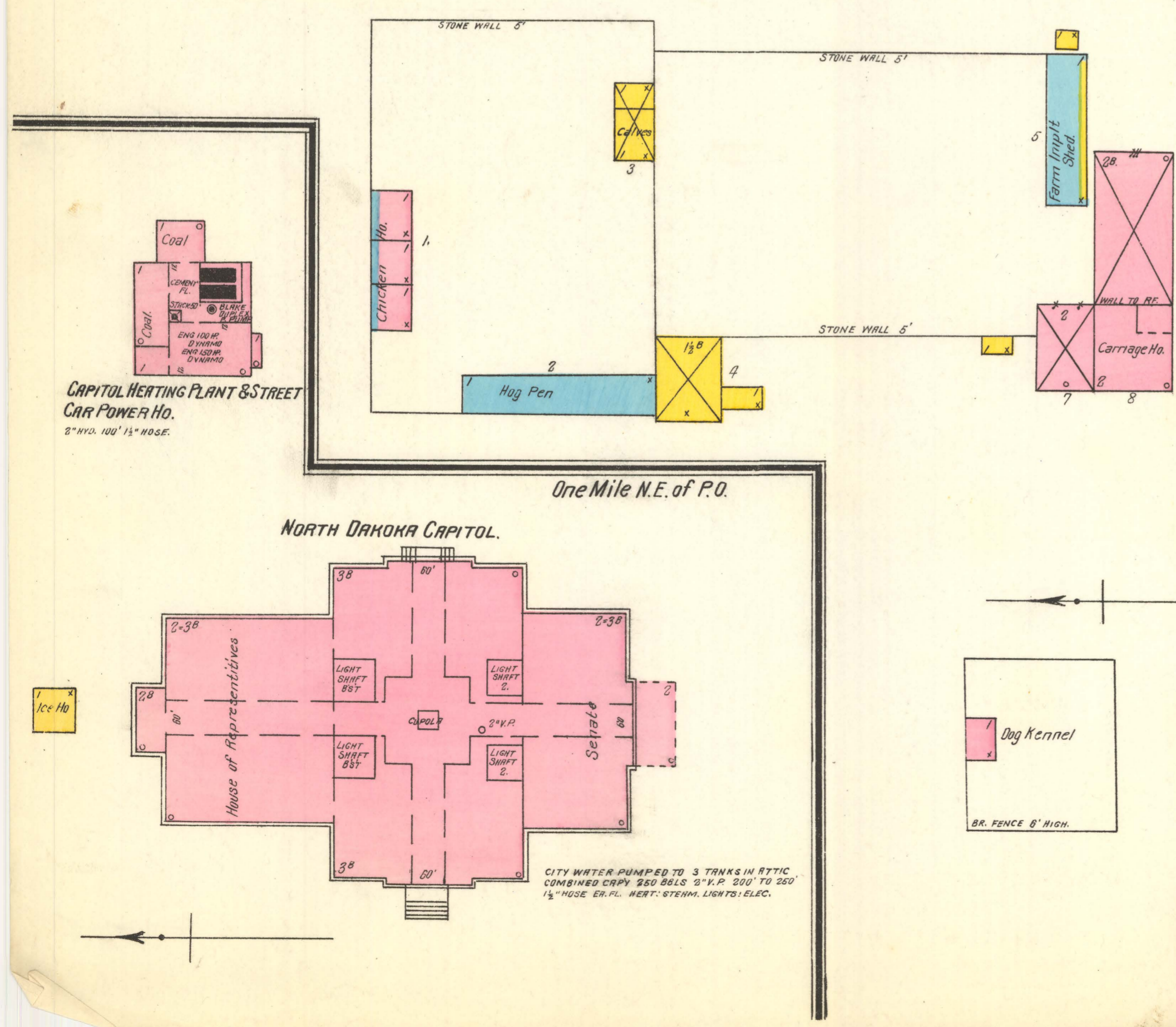
2 Miles W. of P.O.



NOTE:-  
NO EXPOSURES ANY SIDE  
SQUADS ON DUTY ON WALL IN DAYTIME 1 NIGHT  
WATCH IN ONE AM & ONE IN CELL NO. 10000 MORT  
WATCHMAN. ALL REPORT TO WARDEN. TIME  
DETECTOR CLOCK 27 STATIONS. CITY WATER  
7 1/2" 2" HOYS. 800' 2" HOSE 150' TO 800' BY  
EACH FWD.

Map Division  
Library of Congress

Scale of Feet.  
50 30 20 0 50 100 150



CITY WATER PUMPED TO 3 TANKS IN ATTYC  
COMBINED CAPY 250 GALS. 3" X 1/2" 200' TO 250'  
1 1/2" HOSE ER. PL. HERT: STEMM. LIGHTS: ELEC.

CAPITOL HEATING PLANT & STREET  
CAR POWER HO.  
2" HOSE 100' 1 1/2" HOSE.