

Georgia Southern University

Digital Commons@Georgia Southern

Library Faculty Presentations

University Libraries Faculty Research and
Publications

10-25-2019

Having Our Say: Engaging ILL and Liaison Librarians in Metadata Curation in EDS

Jeffrey M. Mortimore

Georgia Southern University, jmortimore@georgiasouthern.edu

Follow this and additional works at: <https://digitalcommons.georgiasouthern.edu/lib-facpresent>



Part of the [Library and Information Science Commons](#)

Recommended Citation

Mortimore, Jeffrey M.. 2019. "Having Our Say: Engaging ILL and Liaison Librarians in Metadata Curation in EDS." *Library Faculty Presentations*. Presentation 122. source: <https://www.ebscousergroup.org>
<https://digitalcommons.georgiasouthern.edu/lib-facpresent/122>

This presentation is brought to you for free and open access by the University Libraries Faculty Research and Publications at Digital Commons@Georgia Southern. It has been accepted for inclusion in Library Faculty Presentations by an authorized administrator of Digital Commons@Georgia Southern. For more information, please contact digitalcommons@georgiasouthern.edu.

Having Our Say:

Engaging ILL and Liaison Librarians in Metadata Curation in EDS

Jeffrey M. Mortimore
Discovery Services Librarian
Georgia Southern University



Agenda

- Background
 - Georgia Southern University Libraries
 - Discover @ Georgia Southern
 - Metadata Mayhem
- Metadata Curation Workflow
 - Enable Trial Databases
 - Metadata & ILL Review
 - Liaison Review
 - Deactivate & Monitor
- Outcomes
 - Lessons Learned
 - Next Steps



Background: Georgia Southern University Libraries

- Georgia Southern University
 - Public R2 in southeast Georgia
 - 26,000 students (+/-)
 - 141 degree programs
 - 3 campuses
- University Libraries
 - 2 libraries (Savannah & Statesboro)
 - 70 FT & PT personnel
 - 25 faculty librarians
 - 860,000 volumes
 - 95,000 journals
 - 296 databases
 - Member of GALILEO



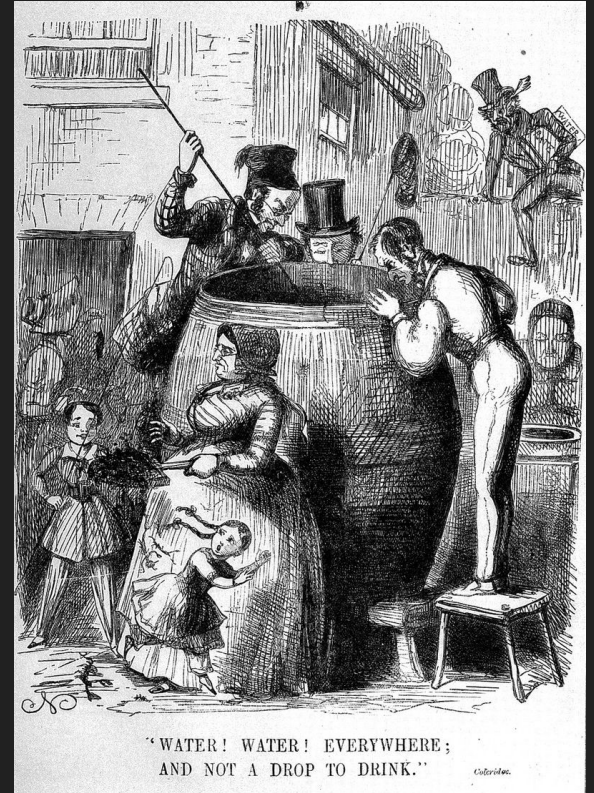
Background: Discover @ Georgia Southern

- Discover @ Georgia Southern
 - Adopted 2012, no prior discovery
 - Alma / Primo catalog
 - Digital Commons IR
 - Alma Link Resolver (ALR)
 - ILLiad via ALR & custom link
 - AiLC limiter enabled by default
 - Auth: IP / Guest / OpenAthens
 - Express links disabled
- Content
 - EDS databases enabled: 232
 - Full text results: 450 million
 - Total results: 1.45 billion

The screenshot displays the Discover @ Georgia Southern search interface. At the top, there are navigation links for 'New Search', 'Images', 'Library Homepage', and 'e-Journals'. The search bar contains the text 'Discover @ Georgia Southern' and 'Keyword Metadata'. A 'Search' button is visible. Below the search bar, there are links for 'Basic Search', 'Advanced Search', and 'Search History'. The main content area shows 'Search Results: 1 - 50 of 13,232,617'. A 'Refine Results' sidebar on the left includes options for 'Limit To' (Available in Library Collection, Online (Full Text) Only, Scholarly/Peer-Reviewed) and 'Filter By Resource Type' (All Results, News, eBooks, Electronic Resources, Books). The search results list includes a result for 'Metadata' from the 'RESEARCH STARTERS' collection, with a description: 'Metadata is descriptive, structural, or administrative information included as part of a digital file, electronic record, or other resource. It often... more'. Below the result, there are links for 'PDF Full Text', 'Request via Interlibrary Loan (ILL)', 'PlumX Metrics', and 'Full Download'.

Background: Metadata Mayhem

- First Try: New content automatically enabled
- Second Try: Enable all Open Access content
- Third Try: Intentionally curate, OA or not
 - Overall Metadata Quality
 - Likelihood of ILL Fulfillment
 - Value to the Collection



“Water! Water! Everywhere; and not a drop to drink”; anon., 1849. Credit: [Wellcome Collection](#) [CC BY](#)

Background: Metadata Mayhem

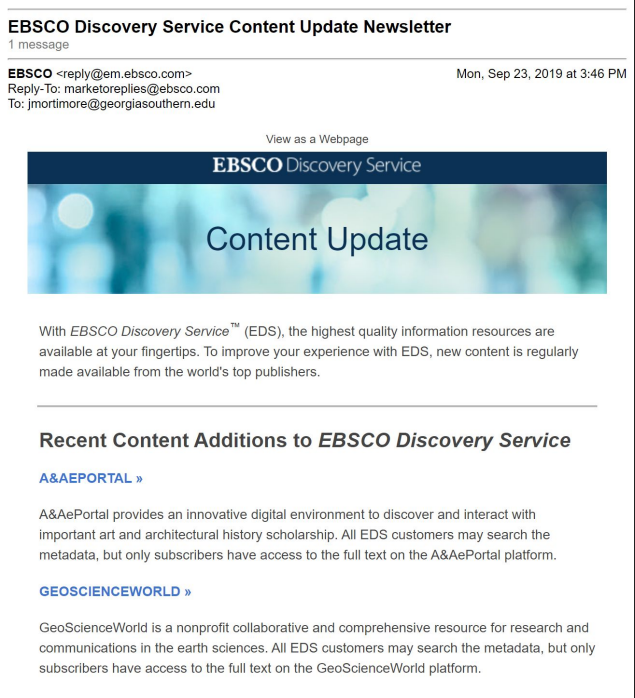
- Overall Metadata Quality
 - Are the records well described, indexed, & maintained?
 - Do the access points work?
- Likelihood of ILL Fulfillment
 - Does the metadata populate to ILLiad?
 - Is the metadata adequate to locate the resource?
 - Is the resource likely to be filled?
- Value to the Collection
 - Is the content of appropriate quality?
 - Does the content align with reference & instruction?
 - Does the content rank appropriately?



“Water! Water! Everywhere; and not a drop to drink”; anon., 1849. Credit: [Wellcome Collection](#) [CC BY](#)

Curation Workflow: Enable Trial Databases

- Accumulate EBSCO's *Content Update Newsletters* until 5-10 new databases become available.
- Activate all new databases in the live EDS profile.
- Configure custom links for OA databases only.
- After the profile updates, schedule a meeting of technical services & ILL personnel to review the results.



EBSCO Discovery Service Content Update Newsletter
1 message

EBSCO <reply@em.ebsco.com> Mon, Sep 23, 2019 at 3:46 PM
Reply-To: marketoreplies@ebsco.com
To: jmortimore@georgiasouthern.edu

[View as a Webpage](#)

EBSCO Discovery Service

Content Update

With *EBSCO Discovery Service™* (EDS), the highest quality information resources are available at your fingertips. To improve your experience with EDS, new content is regularly made available from the world's top publishers.

Recent Content Additions to *EBSCO Discovery Service*

[A&AEPORAL »](#)

A&AePortal provides an innovative digital environment to discover and interact with important art and architectural history scholarship. All EDS customers may search the metadata, but only subscribers have access to the full text on the A&AePortal platform.

[GEOSCIENCEWORLD »](#)

GeoScienceWorld is a nonprofit collaborative and comprehensive resource for research and communications in the earth sciences. All EDS customers may search the metadata, but only subscribers have access to the full text on the GeoScienceWorld platform.

Curation Workflow: Metadata & ILL Review

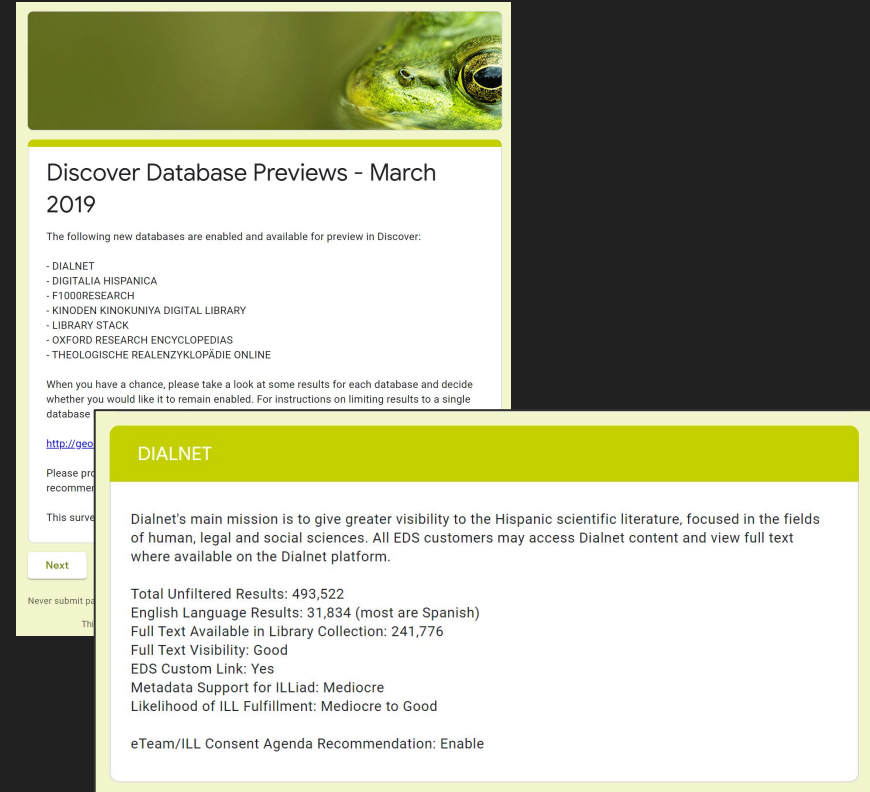
- Search “FT Y OR FT N” & filter results for each trial database.
- Review quality/completeness of metadata & indexing for language, AiLC limiter filtering, etc.
- Test population of ILLiad form via link resolver & custom link.
- Discuss likelihood of fulfillment:
 - Unsubscribed content
 - OA results

The screenshot displays the ILLiad interface. At the top, there's a navigation bar with 'New Search', 'Images', 'Library Homepage', 'e-Journals', 'Folder', 'Preferences', 'Language', 'Ask a Librarian', and 'Help'. The search bar contains the query 'FT Y OR FT N' and shows 'Search Results: 401 - 450 of 1,656,958'. A list of search results is visible, with the first entry being '401. Gathering Many Likenesses: Trinity and Kenosis' by Kenneth Oakes. A red arrow points from the 'Request via Interlibrary Loan (ILL)' link in the search results to the 'Photocopy Request' form. The form includes a 'Logoff 90907610' button and a 'Main Menu' with options like 'New Request', 'View', and 'Tools'. The 'Describe the item you want' section contains a table with the following fields:

* Title (Journal Title or Book Title, etc)	Gathering Many Likenesses: Trinity and Kenosis
* Volume	17
* Issue Number or Designation	3
Month	
* Year	2019
* Inclusive Pages	871-891
ISSN/ISBN (International Standard Serial/Book Number)	24705861
Call Number	
OCLC or Docline UI Number	
* Article Author	Kenneth Oakes.
* Article Title	Gathering Many Likenesses: Trinity and Kenosis
* Not Wanted After Date	12/18/2019

Curation Workflow: Metadata & ILL Review

- Prepare a survey for the liaisons to review each trial database for quality, alignment, & relevance ranking.
- Ask whether each database should remain enabled or be disabled.
- In the survey, include:
 - Description of the database
 - Description of the results
 - Visibility of OA/FT resources
 - Likelihood of ILL fulfillment



Discover Database Previews - March 2019

The following new databases are enabled and available for preview in Discover:

- DIALNET
- DIGITALIA HISPANICA
- F1000RESEARCH
- KINODEN KINOKUNIYA DIGITAL LIBRARY
- LIBRARY STACK
- OXFORD RESEARCH ENCYCLOPEDIAS
- THEOLOGISCHE REALENZYKLOPÄDIE ONLINE

When you have a chance, please take a look at some results for each database and decide whether you would like it to remain enabled. For instructions on limiting results to a single database, see <http://geodiscover.com/faq/faq-10.html>.

Please provide your recommendation.

This survey will be closed on 10/10/2019. [Next](#)

Never submit passwords through Internet Explorer's auto-complete feature. This page is protected by https://www.illiad.org

DIALNET

Dialnet's main mission is to give greater visibility to the Hispanic scientific literature, focused in the fields of human, legal and social sciences. All EDS customers may access Dialnet content and view full text where available on the Dialnet platform.

Total Unfiltered Results: 493,522
English Language Results: 31,834 (most are Spanish)
Full Text Available in Library Collection: 241,776
Full Text Visibility: Good
EDS Custom Link: Yes
Metadata Support for ILLiad: Mediocre
Likelihood of ILL Fulfillment: Mediocre to Good

eTeam/ILL Consent Agenda Recommendation: Enable

Curation Workflow: Liaison Review

- Give the liaison librarians 2-3 weeks to complete the survey.
- Include a mechanism for liaisons who claim unique subject area overlap to weight their score.
- Provide instructions for how to conduct the search & filter results to each database.

DIALNET

Dialnet's main mission is to give greater visibility to the Hispanic scientific literature, focused in the fields of human, legal and social sciences. All EDS customers may access Dialnet content and view full text where available on the Dialnet platform.

Total Unfiltered Results: 493,522
English Language Results: 31,834 (most are Spanish)
Full Text Available in Library Collection: 241,776
Full Text Visibility: Good
EDS Text Link: Yes
EDS Custom Link: Yes
Metadata Support for ILLiad: Mediocre
Likelihood of ILL Fulfillment: Mediocre to Good
eTeam/ILL Consent Agenda Recommendation: Enable

DIALNET

All liaisons, please indicate your preference here.

Enable

Disable

Liaison Preference

Please further weight your preference if a significant portion of this database's content is highly relevant to one or more of your assigned liaison areas. Otherwise, leave this item blank.

Enable

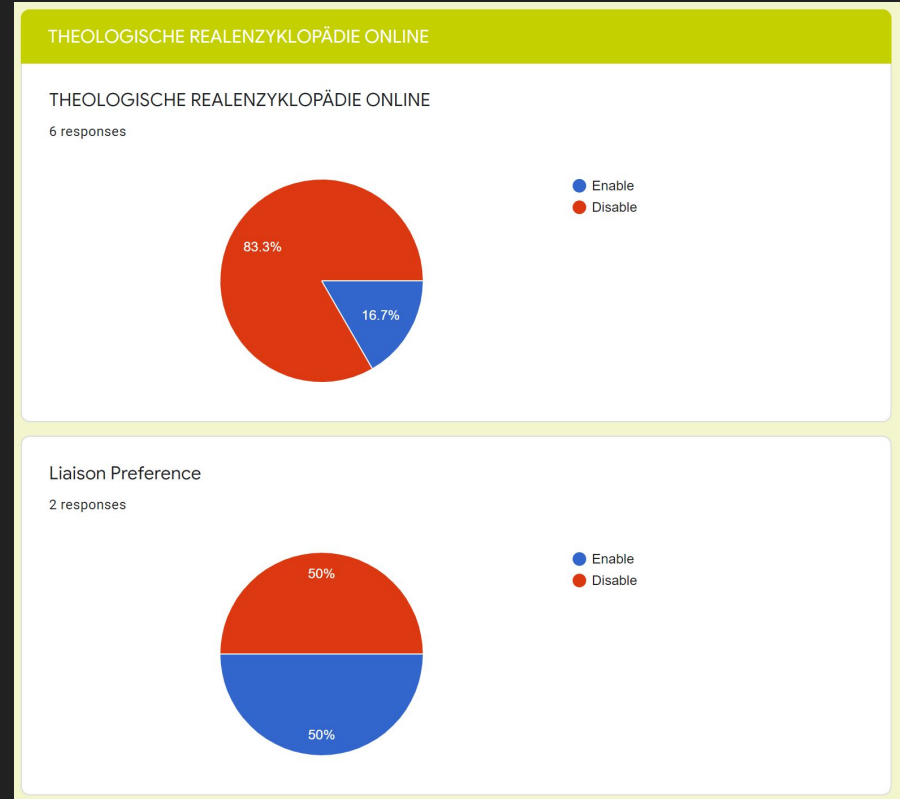
Disable

Comments

Your answer _____

Curation Workflow: Liaison Review

- When the survey closes, analyze the liaisons' feedback.
- In this example:
 - Technical services and ILL personnel recommend the database be disabled due to poor metadata quality & low likelihood of fulfillment.
 - 83.3% of all liaisons (n=6) recommend the database be disabled.
 - Liaisons claiming unique subject area overlap (n=2) are evenly divided.



Metadata Curation: Deactivate & Monitor

- After analyzing the liaisons' feedback in context of technical services & ILL's recommendations, prepare a final set of recommendations for approval by the library faculty.
- Based on the faculty's final approval, disable any 'rejected' databases.
- All library personnel monitor & report any access issues through established troubleshooting channels.

Recommendations for Consent Agenda: August/September Discover Database Trials	
C&RS, September 19, 2019	
Following are recommendations for enabling or disabling databases trialed in Discover during August and September 2019. Recommendations are informed by liaisons' survey feedback and ILL's evaluation of the likelihood that requests originating from these databases reasonably could be fulfilled.	
ADEAC	Recommendation: Disable
<ul style="list-style-type: none">● 100% of liaisons (n=10) support disabling● 100% of liaisons with strong content-area overlap (n=2) support disabling	
ARC REPORTS	Recommendation: Disable
<ul style="list-style-type: none">● 70% of liaisons (n=10) support disabling● 100% of liaisons with strong content-area overlap (n=1) support enabling	
BLOOMSBURY APPLIED VISUAL ARTS	Recommendation: Enable
<ul style="list-style-type: none">● 80% of liaisons (n=10) support enabling	
BLOOMSBURY ENCYCLOPEDIA OF PHILOSOPHERS	Recommendation: Disable
<ul style="list-style-type: none">● 100% of liaisons (n=10) support disabling● 100% of liaisons with strong content-area overlap (n=1) support disabling	
BLOOMSBURY FASHION CENTRAL	Recommendation: Enable
<ul style="list-style-type: none">● 80% of liaisons (n=10) support enabling● 100% of liaisons with strong content-area overlap (n=1) support enabling	

Outcomes: Lessons Learned

- Since Late 2015:
 - 17 database reviews completed
 - 156 unsubscribed & OA databases reviewed
 - 65 databases permanently enabled
 - 92 databases disabled
- Most liaisons follow technical services & ILL's recommendations; however, they diverge enough to make the effort worthwhile.
- No permanently enabled unsubscribed or OA databases disabled since review!

Outcomes: Next Steps

How often (and to what extent) should we review **ALL** of our enabled databases & custom links?

- Metadata quality & indexing
- OA status
- Custom links
- Relevance to reference & instruction changes

Thank You!

Questions?

Jeffrey M. Mortimore
Discovery Services Librarian
Georgia Southern University

jmortimore@georgiasouthern.edu