

Carl Erik Elving: Augustana Alum of 1886

Adrian Sowicz

Augustana College, Rock Island Illinois

Evan Webber

Augustana College, Rock Island Illinois

Emma Gannaway

Augustana College, Rock Island Illinois

Follow this and additional works at: <https://digitalcommons.augustana.edu/celebrationoflearning>



Part of the [Genealogy Commons](#)

Augustana Digital Commons Citation

Sowicz, Adrian; Webber, Evan; and Gannaway, Emma. "Carl Erik Elving: Augustana Alum of 1886" (2019). *Celebration of Learning*.
<https://digitalcommons.augustana.edu/celebrationoflearning/2019/posters/20>

This Poster Presentation is brought to you for free and open access by Augustana Digital Commons. It has been accepted for inclusion in Celebration of Learning by an authorized administrator of Augustana Digital Commons. For more information, please contact digitalcommons@augustana.edu.

No. _____ Records for 1883 Class. V

Augustana College and Theological Seminary.

Please, fill out this blank legibly, and return it without delay to your Class Guardian.

- Write your name and surname in full (underlining your name of familiar address):
Carl Erik Elving
- State your parents' nationality:
Swedish
- Your father's name:
Johannes Lund
Occupation: *Swedish Police* Residence: *Lidkulla, Bohuslän, Sweden*
- Where were you born?
Lidkulla, Bohuslän, Grangårds, Bohuslän, Sweden
- When were you born? Year 1855, month *December*, 6th day.
- What was your occupation before entering this institution?
Swedish school-teacher
- Where did you receive instruction before entering this institution?
Elementary school in Lidkulla, Bohuslän
- When did you or your ancestors arrive in this country?
May 1879
- Where is your present home?
- When did you enter this institution? *Fall term 1880*
- When did you enter this class? *Fall term 1883*
- What course of studies do you pursue here? (State in what class, and whether Classical, Scientific, or selected; if selected, state what topics, and in what class or classes).
Classical course
- To what church and congregation do you belong?
Sw. E. Luth. Church Chicago, Ill.
- Do you receive any beneficiary aid, and how much?
Full board
- In what room do you live? *47*
- Subscribe your usual signature:
C. E. Elving

Registration Card of Carl Erik Elving at Augustana.¹



Ancestors of Carl Erik Elving^{15, 16}

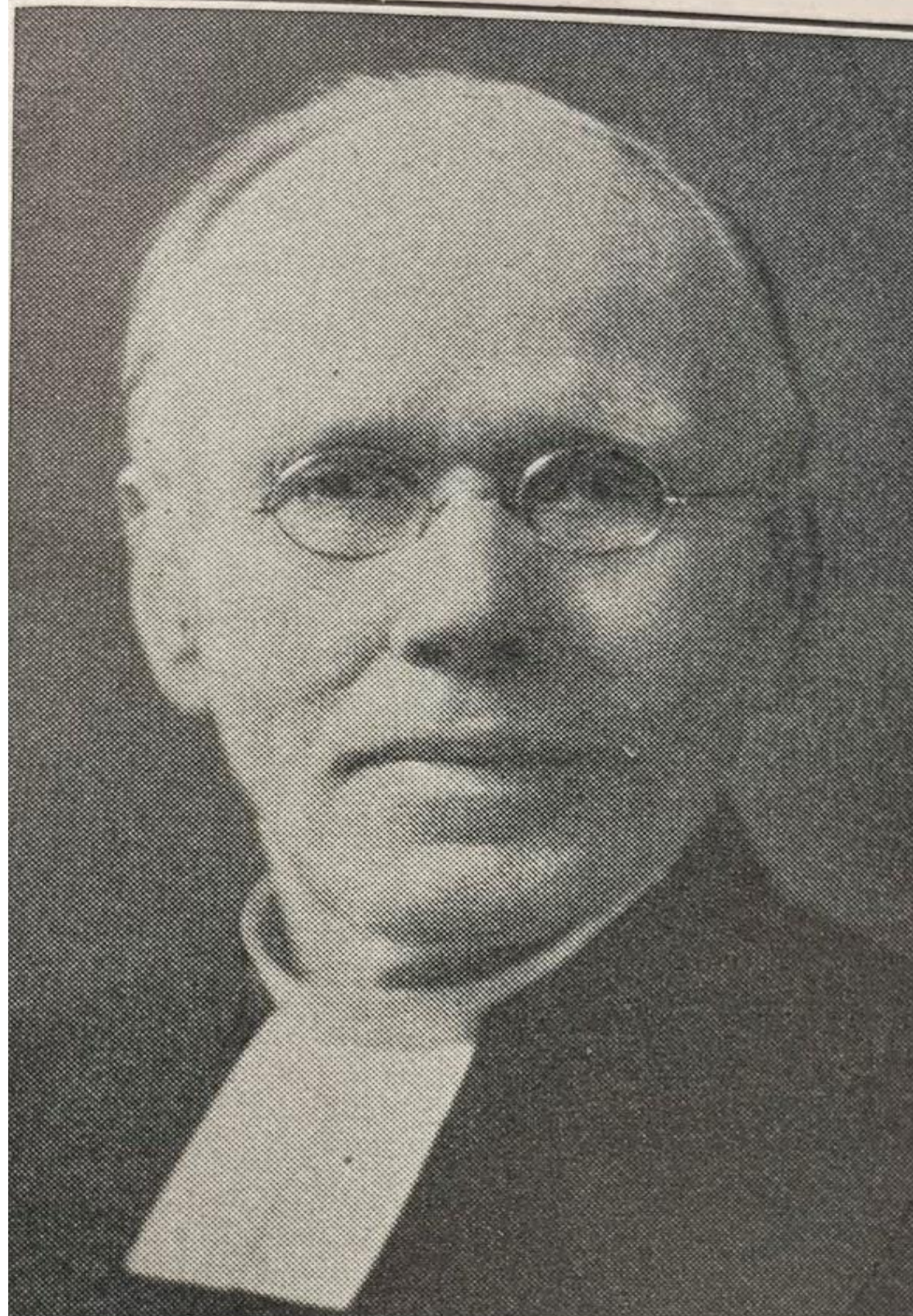
In America, Carl worked as a Swedish school-teacher and within a year he would attend Augustana's preparatory school.² After three years Carl registered for the Theological Seminary at Augustana and took the classical course until June 24th of 1888.³ It is also known that he was attending Augustana College fully aided financially through this time.⁴ During this time he was engaged as a city missionary in Omaha, received his A.B. degree in 1886 and took part in the Phenocosmian Society in 1887.⁵ Almost four months after graduating, Carl E Elving would marry Alma M. E. Johnson 1888 November 2nd.⁶ That same year he was called to become a missionary pastor on the south side of his city, where he and his wife strived to establish a church.⁷ By only 1891 a church was built.⁸ He left Nebraska in the fall of 1914 for the twin cities in Minnesota to organize many more societies.⁹ Elving would soon retire in 1925, but he's proven to be accomplished in beginning and taking part in many organizations.¹⁰ For instance, from 1894-1897 he served on the Augustana Pension Fund Board and from 1899-1902 he was a member of the Board of Directors of Luther College.¹¹ Later, in 19-07-1913 he was a member of the Nebraska Conference Orphan Home Board and in 1921 he was on the board of the Society for Lutheran Missions in Russia.¹² Carl also founded El Campo and Granada Settlements.¹³

Carl Erik Elving

Celebration of Learning

Augustana College

1 May 2019



Portrait of Carl Erik Elving.¹⁴

200

MARRIAGE LICENSE RECORD.

STATE OF KANSAS, RILEY COUNTY, SS. 1888

IN MATTER OF APPLICATION FOR LICENSE FOR **200**

Carl Erik Elving TO MARRY *Alma M. E. Johnson*

In Probate Court of said County.

I, *Carl Erik Elving*, being duly sworn, say that I am the above named first party; I am *20* years of age, and said *Alma M. E. Johnson* is *20* years of age; they are both unmarried and capable of entering into any civil contract, and that we are not within the degrees of consanguinity or affinity in which marriages are prohibited by the laws of Kansas, and that there is no legal disability to our marriage.

Subscribed in my presence, and sworn to before me, this *11th* day of *October*, A. D. 1888.

Probate Judge

→*STATE OF KANSAS*←

COUNTY OF RILEY.

Be it Remembered, That on the *11th* day of *October*, A. D. 1888, there was issued from the office of the Probate Judge, a MARRIAGE LICENSE, of which the following is a true copy:

MARRIAGE LICENSE.

Riley County, State of Kansas, *October 11th 1888*

No any Person authorized by Law to perform the Marriage Ceremony, do hereby certify that you are hereby authorized to join in Marriage *Carl Erik Elving* and *Alma M. E. Johnson* on the *11th* day of *October*, A. D. 1888, and of this License you will make due return to my office within thirty days.

And which said Marriage License was afterwards, to-wit: On the *11th* day of *October*, A. D. 1888, returned to me by the Probate Judge with the following certificate endorsed thereon, to-wit:

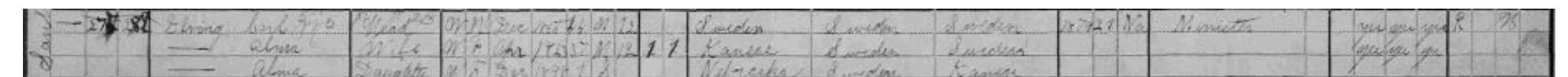
I, *Carl Erik Elving*, do hereby certify, that in accordance with the authorization of the within License, I did on the *11th* day of *October*, A. D. 1888, solemnize the said Marriage, and unite in Marriage the within named *Carl Erik Elving* and *Alma M. E. Johnson* in my presence, and in the presence of *W. J. Cross* my hand, and seal this day and year above written.

Attest: *W. J. Cross* Probate Judge.

Marriage record of Carl Erik Elving and Alma¹⁷

SACRATON	RACE	RELATION	FEDERAL IDENTIFICATION	SEX	HEIGHT	HAIR	EYES	COMPLEXION	SCARS	MARKS	EDUCATION	INDUSTRY	PROPERTY

United States Census 1900.¹⁸



Carl Erik Elving and his wife and daughter on the Census.¹⁹

6 December 1855	8 December 1855	16 May 1879	Fall 1880	Fall 1883	25 June 1901	8 February 1903	1907-1913	1914	1921	1925	15 March 1934	17 March 1934
Birth	Christening	Traveled to America	Began at Augie	Theological Seminary	Carl Theodor	Victor Ebenezer	Nebraska Conference Ophran Home Board	Moved from Nebraska	Board of the Society of Lutheran Missions	Retired	Death	Funeral
<i>Lövskullen, Dalarna, Sweden</i>	<i>Grangarde, Kopparberg, Sweden</i>	<i>Gothenburg to Boston</i>	<i>Preparatory school</i>	<i>Classical course</i>	<i>Their second child was born in Omaha</i>	<i>Their third child was born in Omaha</i>	<i>Member of this board for seven years</i>	<i>To the Twin Cities in Minnesota</i>			<i>Passed away while a patient at Bethesda Hospital</i>	<i>His gravestone is located Mariadahl cemetery</i>

Reference Notes

¹Registration card for Carl Erik Elving, 1883, Folder 07, Box 01, MSS241c, Augustana College, Special Collections, Rock Island, Illinois.

The registration card was printed and almost certainly filled out by Carl E. Elving in 1883.

²Registration card for Carl Erik Elving, 1883, MSS241c, Augustana College Office of the Registrar Records.

³Registration card for Carl Erik Elving, 1883, MSS241c, Augustana College Office of the Registrar Records

⁴Registration card for Carl Erik Elving, 1883, MSS241c, Augustana College Office of the Registrar Records

⁵Conrad Bergendoff, *The Augustana Ministerium* (Rock Island, Illinois: Augustana Historical Society, 1980), page 150-152. The Ministerium is a collection of other sources. Many of which are transcribed and some translated from Swedish to English.

⁶Conrad Bergendoff, *The Augustana Ministerium* 150-152.

⁷Conrad Bergendoff, *The Augustana Ministerium* 150-152.

⁸Conrad Bergendoff, *The Augustana Ministerium* 150-152.

⁹Conrad Bergendoff, *The Augustana Ministerium* 150-152.

¹⁰Conrad Bergendoff, *The Augustana Ministerium* 150-152.

¹¹Conrad Bergendoff, *The Augustana Ministerium* 150-152.

¹²Conrad Bergendoff, *The Augustana Ministerium* 150-152.

¹³Conrad Bergendoff, *The Augustana Ministerium* 150-152.

¹⁴Conrad Bergendoff, *The Augustana Ministerium* 150-152.

¹⁵Hallefors C:6 (1802-1830)", database of images *ArkivDigital*, (<http://www.arkivdigital.net> : accessed 10 April 2019), image 1770, AID: v53303a.b1770, NAD: SE/ULA/10427, Johannes Persson (b. 1824) in Hallefors, in Sweden; Swenson Swedish Immigration Research Center, Augustana College, Rock Island, Illinois. This image is a photograph of the original parish register and shows Johannes Persson's birth record.

¹⁶Hallefors C:6 (1802-1830)", database of images *ArkivDigital*, (<http://www.arkivdigital.net> : accessed 25 March 2019), image 1640, AID: v53303a.b1640, NAD: SE/ULA/104, Greta Lisa (b. 1823) in Hallefors, in Sweden; Swenson Swedish Immigration Research Center, Augustana College, Rock Island, Illinois. This image is a photograph of the original parish register and shows Greta Lisa's birth record.

¹⁷Kansas County Marriages, 1855-1911, database with images, *FamilySearch* (<https://familysearch.org/ark:/61903/1:1:Q293-TVP2> : 4 November 2017), Carl E Elving and Alma M E Johnson, 02 Nov 1888; citing Marriage, Riley, Kansas, United States, district clerk, court clerk, county clerk and register offices from various counties; FHL microfilm 2,057,669.

¹⁸United States Census, 1900", database with images, *FamilySearch* (<https://familysearch.org/ark:/61903/1:1:M3YR-9XW> : accessed 20 March 2019), Carl Elving, Precinct 11 Omaha city Ward 2, Douglas, Nebraska, United States, citing enumeration district (ED) 21, sheet 15A, family 288, NARA microfilm publication T623 (Washington, D.C.: National Archives and Records Administration, 1972); FHL microfilm 1,240,923.

¹⁹United States, Nebraska, Omaha, 1900 census. Database with images, *FamilySearch*.

²⁰*Find A Grave*, database and images (<https://www.findagrave.com> : accessed 01 April 2019), memorial page for Rev Carl E. Elving (6 Dec 1855–15 Mar 1934), Find A Grave Memorial no. 8936019, citing Mariadahl Cemetery, Olsburg, Pottawatomie County, Kansas, USA ; Maintained by Sandy Oprechak (contributor 48847462). The record includes a photo of the gravestone.

Source List

- Augustana College Office of the Registrar (MSS 241c), Special Collections, Augustana College, Rock Island, Illinois
- Augustana College Catalog 1884–1885*. Augustana College, Special Collections, Rock Island, Illinois.
- Bergendoff, Conrad. *The Augustana Ministerium: A Study of the Careers of the 2,504 Pastors of the Augustana Evangelical Lutheran Synod/Church 1850–1962*. Rock Island, Illinois, Augustana Historical Society, 1980.
- Augustana College Graduation Program 1886* (MSS 248). Augustana College. Special Collections. Rock Island, Illinois.
- My Church 1934*. Augustana College. Rock Island, Illinois.
- Census. 1900. United States. Nebraska. Douglas County. Omaha.
- <https://familysearch.org/ark:/61903/3:1:3SHY-6G1Z-ZMB?cc=1325221&wcc=9BWZ-6YM%3A1030896901%2C1030788401%2C1031245701>. Family Search
- "Grangårde C9 (1841-1858)". Database of images. *ArkivDigital*. <http://www.arkivdigital.net> : 2019
- "Grangårde A1:17e (1852-1862)", database of images, *ArkivDigital*. <http://www.arkivdigital.net> :

26 March 2019

"Hallefors C:6 (1802-1830)". Database of images. *ArkivDigital*. <http://www.arkivdigital.net> : 2019

"Hjulsjö C:1 (1760-1795)". Database of images. *ArkivDigital*. <http://www.arkivdigital.net> : 2019

"Hallefors A1:9 (1821-1830)". Database of images. *ArkivDigital*. <http://www.arkivdigital.net> : 2019

"Hallefors C:5 (1775-1801)". Database of images. *ArkivDigital*. <http://www.arkivdigital.net> : 2019

"Hallefors A1:9 (1821-1830)". Database of images. *ArkivDigital*. <http://www.arkivdigital.net> : 2019

"Hallefors A1:5a (1786-1795)". Database of images. *ArkivDigital*. <http://www.arkivdigital.net> : 2019

"Hjulsjö A1:2 (1775-1784)". Database of images. *ArkivDigital*. <http://www.arkivdigital.net> : 2019

"Hallefors C:4 (1740-1774)". Database of images. *ArkivDigital*. <http://www.arkivdigital.net> : 2019

Marriage Record, 1855-1911. United States, Kansas. Riley County. Database with images, *FamilySearch*.

U.S., Evangelical Lutheran Church in America, Swedish American Church Records, 1800-1946. USA, Illinois. Elk Grove. Database online. Ancestry.com.

Acknowledgments

We appreciate the help from all these peoples. This project wouldn't have been made without the help from them:

Emma Lincoln, Special Collections Librarian, Augustana College

Jill Seaholm, Head of Genealogical Services, Swenson Swedish Immigration Research Center.

Susan Titus, Head of Library Services, Swenson Swedish Immigration Research Center

Lisa Huntsha, Archivist/Librarian, Swenson Swedish immigration Research Center

By Emma Gannaway, Evan Webber, and Adrian Sowiec