

Fall 11-6-1996

Path Dependence and the Origins of Planning in Russia: Did the Bolshevik Revolution Escape Russian History?

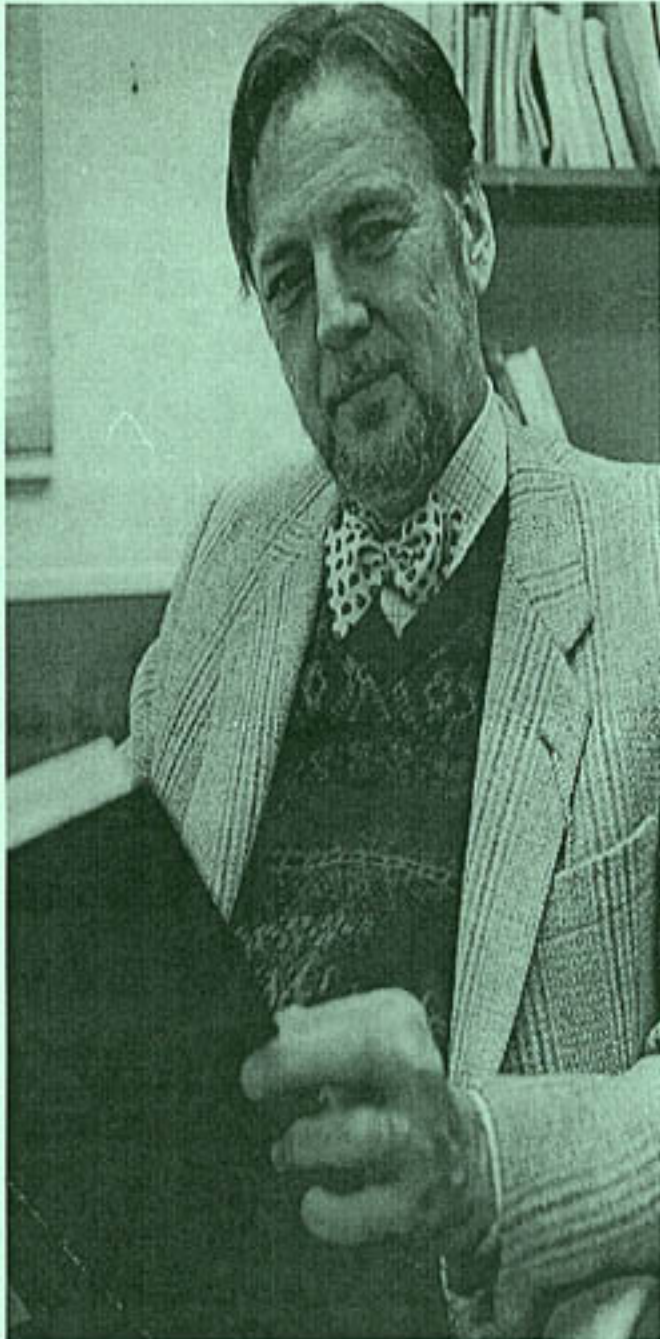
Don Rowney
Bowling Green State University, drowney@bgsu.edu

Follow this and additional works at: https://scholarworks.bgsu.edu/ics_fellow_lectures

Recommended Citation

Rowney, Don, "Path Dependence and the Origins of Planning in Russia: Did the Bolshevik Revolution Escape Russian History?" (1996). *ICS Fellow Lectures*. 23.
https://scholarworks.bgsu.edu/ics_fellow_lectures/23

This Book is brought to you for free and open access by the Institute for the Study of Culture & Society at ScholarWorks@BGSU. It has been accepted for inclusion in ICS Fellow Lectures by an authorized administrator of ScholarWorks@BGSU.



Path Dependence and the Origins of Planning in Russia: Did the Bolshevik Revolution Escape Russian History?

A Conversation with **Don Rowney**
History Dept. and Current Scholar in Residence,
Institute for the Study of Culture and Society (ICS)

Wednesday, November 6, 12:00-2:00
Classroom 2 College Park