

## Functional Properties of Processed Pinto Bean (*Phaseolus vulgaris* L.) Grown in Plateau State, Nigeria

S. S. Audu<sup>1</sup>, M. O. Aremu<sup>2\*</sup>, L. Lajide<sup>3</sup>, O. J. Oko<sup>2</sup>

<sup>1</sup>Department of Chemistry, Nasarawa State University, PMB 1022, Keffi, Nigeria

<sup>2</sup>Department of Chemical Sciences, Federal University Wukari, PMB 1020 Taraba State, Nigeria

<sup>3</sup>Department of Chemistry, Federal University of Technology, PMB 704, Akure, Nigeria

\*Corresponding author: [lekearemu@gmail.com](mailto:lekearemu@gmail.com)

### Abstract

It is well documented that processing method influences the chemical composition and utilization of plant foods. For this purpose, the effect of different processing methods (boiled, cooked, roasted, sprouted and fermented) was investigated on the functional properties of pinto bean (*Phaseolus vulgaris* L.) flour. Functional properties (water, oil, oil emulsion and foaming capacities: WAC, OAC, OEC, FC; foaming and oil emulsion stabilities: FS, OES; least gelation concentration: LGC; bulk density: BD; protein solubility: PS) of raw and processed pinto bean flour were all determined using standard analytical techniques. The results showed that OEC, OES, LGC and BD were enhanced by different processing methods while WAC and OAC were reduced by roasting method. Processing significantly ( $p \leq 0.05$ ) affected the content of some functional parameters in pinto bean flour. Boiling, sprouting and fermenting increased WAC and OAC contents by 34.6, 28.8, 21.2% and 33.0, 24.2, 36.3%, respectively while cooking, roasting and sprouting reduced FS by respective 3.9, 32.4 and 13.6%. The protein solubility studies of the raw and processed sample flour were found to have minimum solubility at pH range of 4.0 to 5.2 which correspond to isoelectric points where protein isolates might be recovered from the samples. Generally, all the functional parameters determined in this study were good thereby making raw and processed samples of pinto bean potentially useful in some food formulations.

**Keywords:** Pinto bean, domestic processing, functional parameters.

### 1. Introduction

Legumes refer to the seeds of *Leguminosea*, including peas, beans and pulses. They are the main sources of protein for majority of people (Aremu, 2006; Olaofe, 1993). Legumes are considered as “poor man’s meat” due to their high protein content and low cost compared to meat and meat products (Awolumate, 1983). Recent problems linked to meat consumption have also led to renewed interest in vegetarian diet. This phenomenon is reinforced by the fact that physicians have pointed out that consumers eat too many animal products (rich in saturated fat) and not enough plant foods. The consumption of a great deal of meat increases the risk of cardiovascular diseases and some types of cancer (Davendra, 1995). Therefore, the utilization of seed flour and plant proteins as functional ingredients in food system especially in legumes continued to be of research interest (Aluko and Yada, 1995). Furthermore, legumes are known to be superior in terms of the provision of protein without cholesterol, fibre and minerals such as calcium, magnesium and potassium (George and Pamplona-Roger, 2005). Despite these useful constituents that are present in these seeds, its utilization has been ignored because it has been established that there are compounds or substances which act to reduce nutrient intake, digestion, absorption and utilization; they include tannins, saponins, phytates, flavonoids, alkaloids, cyanogenic, glycosides and trypsin (Copeland, 1976; Aremu *et al.*, 2010; Audu *et al.*, 2013).

The pinto bean (Spanish; *Frijol pinto*, literally “painted bean”) is named for its mottled skin (compare with pinto horse), hence it is a type of mottle bean. It is the most common bean in the United States and northwestern Mexico, and is most often eaten whole in broth or mashed and refried. The young pods may also be harvested and cooked as green pinto bean (Lyimo *et al.*, 1992). The plant can be taken in the form of stew and sauces, however, many ethnic groups in Nigeria are not familiar with it unlike the people of Bokkos in Plateau State

where it is cultivated and known locally as “Kwakil”. It is consumed either in its dry or green form. The leaf is occasionally used as a leaf vegetable, and the straw is used for fodder.

In our earlier work, we have presented the effect of processing methods on the nutritional composition of pinto bean (*Phaseolus vulgaris* L.) seed flour (Audu *et al.*, 2011; Audu and Aremu, 2011). Therefore in continuation of our studies on this under-utilized tropical legume, this article considers the effect of processing on functional properties of pinto bean flour. This will provide useful information to the industrialists and others alike on the subsequent incorporation of the studied sample into food products by producing natural, cheap and adaptable functional foods.

## **2. Materials and Methods**

### **2.1 Collection of the sample**

For the purpose of this study, mature seeds of pinto beans (*Phaseolus vulgaris* L.) were collected from a farmer in Bokokos town of Plateau State, Nigeria. The seeds were thoroughly cleaned and sorted to remove stones and bad ones. The processing methods employed were boiling, cooking, roasting, sprouting and fermenting while raw sample served as control.

### **2.2 Preparation of processed pinto beans seed flour**

#### **2.2.1 Raw sample**

Cold water was added on 1 kg of pinto bean seeds, left for 4 h and dehulled. The dehulled seeds were dried in the oven at 45°C.

#### **2.2.2 Boiling**

The dehulled raw pinto beans (1 kg) were boiled in distilled water at 100°C at the ratio of 1:10 wt/v for 55 min, after which they were drained and oven-dried at 50°C.

#### **2.2.3 Cooking**

The cooking was done in an aluminium pot using one part of the dehulled raw seeds (1 kg) to 15 parts of distilled water on a Gallenkamp thermostat hot plate. The seeds were considered cooked when they became soft to touch when pressed between the thumb and fingers. At the end of the cooking time, the boiling water was drained and seeds were sun-dried.

#### **2.2.4 Roasting**

Raw seeds (1 kg) were manually dehulled, roasted in fine sand and stirred using the Gallenkamp thermostat hot plate 85°C until a characteristic brownish coloured seed was obtained after 1 h 30 min, which indicated complete roasting. Then, the seeds were cleaned and cooled.

#### **2.2.5 Sprouting**

Pinto bean seeds were germinated using sawdust in a locally woven reed basket. The seeds were arranged in layers of sawdust, wetted daily and observed for sprouting. Seeds with sprouts about 1 cm long (3 – 4 days) were picked, washed, dehulled, sliced and dried at 40°C.

#### **2.2.6 Fermenting**

The dehulled raw seeds (1 kg) were wrapped in blanched banana leaves and allowed to ferment for 4 days. Fermented seeds were picked, washed, sliced and dried at 40°C.

After all processing treatments were completed; all the raw and processed seed samples were ground into fine flour with a small sample mill (DIETZ, 7311 Dettingentech, West Germany). They were kept in airtight container and put in a deep freezer (-4°C) prior to chemical analyses.

### 2.3 Functional properties determinations

Foaming capacity and foaming stabilities were determined by the method described by Coffman and Garcia (1977). Full experimental details have been reported by Aremu *et al.* (2007a). Water and oil absorption capacities were measured by the Beuchat (1977) procedure. Oil emulsion capacity and stability were determined by the procedure of Beuchat (1977) as modified by Adeyeye *et al.* (1994). Bulk density was determined using the procedure of Chou and Morr (1979) as modified by Akpapunam and Markakis (1981); Narayana and Narasinga Rao (1984). Lowest gelation concentration was determined by employing the method of Coffman and Garcia (1977) with slight modification as described by Aremu and Ekunode (2008).

## 3. Results and Discussion

The functional properties of raw and processed pinto bean flour are presented in Table 1. The water absorption capacity ranged from 94.0% in the roasted sample to 140.0% in the boiled sample. The 104.0% reported for the raw sample in this work is lower than the values reported for red kidney bean (165%) (Olaofe *et al.*, 2010) but compared with values for soybean (130%) and various liman bean samples (130 – 142%) (Oshodi and Ekperigin, 1989). The oil absorption capacity (OAC) ranged from 87.0% in the roasted sample to 124.0% in the fermented sample. The 91.0% for the raw flour sample is lower than 280.6% reported for *Clarias lazera* and *Gymarchus niloticus* (148.9%) fish samples (Adeyeye and Adamu, 2005) but higher than values for soya bean (84.4%) and wheat (84.2%) (Lin *et al.*, 1974). Oil absorption is important as oil acts as a flavor retainer and improves the mouth feel of foods (Kinsella, 1979). So pinto bean product would be a good sample for this property.

Foaming capacity (23.8%) for the raw is higher than values for *Clarias lazera* fish sample (4.9%), benniseed (18.0%), pear millet (19.0%) (Oshodi *et al.*, 1999), selected sea foods (6-14%) (Ogunlade *et al.*, 2005), varieties of legume seeds (7.9 – 15.5%) (Aremu *et al.*, 2007a). Pinto bean would be attractive for products like cakes or whipping toppings where foaming is important (Kinsella, 1979). Foaming stability (49.1%, 1 h) for the raw sample is higher than the foaming stability reported for *Clarias lazera* (3.7%, 8 h) (Aremu and Ekunode, 2008), bulma cotton seed (3.0%) (Olaofe *et al.*, 1994), kidney bean (5.0%) (Olaofe *et al.*, 2010) but lower than reported values for benniseed (78.0%), gourd seed (61.0%) (Ogungbenle *et al.*, 2005). Foaming stability is important since it indicates the performance of whipping agents to maintain the stiffness for as long as possible (Lin *et al.*, 1974). Pinto bean can serve in this capacity. The emulsion capacity for the raw and processed samples (8.5 mL/g in the raw to 11.4 mL/g in the cooked) are lower than reported values for *P. africana* (30.0 mL/g) (Aremu *et al.*, 2007b), benniseed, pear millet and quinoa (63.0, 89.0 and 104.0%) (Lin *et al.*, 1974) but compared well with reported values of pigeon peas (7 – 11%) (Oshodi and Ekperigin, 1989). Thus, it indicates that pinto bean flour might be useful in the production of sausages, soups and cakes (Kinsella, 1979). The emulsion stability after 1 h, which is the volume of water separated, ranged from 23.6 mL/g in raw to 25.6 mL/g in roasted sample. The value for the raw is lower than values for *P. africana* (38.4 mL/g) (Aremu *et al.*, 2007b), pear millet (34.0%) (Oshodi *et al.*, 1999), red kidney bean (50.0%) (Olaofe *et al.*, 2010).

The least gelation concentration 8.0% for the raw pinto bean is higher than 6.0% reported for red kidney bean (Olaofe *et al.*, 2010) but comparable to African yam beans (8.0% w/v) (Oshodi *et al.*, 1997) and three varieties of lima beans flour (8–12% w/v) (Oshodi and Adeladun, 1997). These values indicate that pinto bean flour may be responsible for the fact that stews of pinto bean flour thicken well just like melon seed and gourd seed flours. The bulk density ranged from 0.3800 g/cm<sup>3</sup> in the raw to 0.6900 g/cm<sup>3</sup> in the fermented sample. The 0.3500 g/cm<sup>3</sup> for the raw is lower than 0.6800 g/cm<sup>3</sup> reported for red kidney bean flour but close to 0.4700 g/cm<sup>3</sup> reported for soybean flour (Chau and Cheung, 1998).

**Table 1: Functional properties of pinto bean**

Properties	Raw I	Boiled II	Cooked III	Roasted IV	Sprouted V	Fermented VI	Mean	SD	CV%
Water Absorption Capacity %	104	140	136	94	134	126	122.33	18.90	15.45
Oil Absorption Capacity %	91	121	102	87	113	124	106.33	15.48	14.55
Foaming Capacity %	23.8	24.6	21.5	27.9	24.2	25.2	24.53	8.85	36.07
Foaming Stability %	49.1	56.8	47.2	33.2	42.4	51.3	46.66	8.12	17.40
Emulsion Capacity mL/g	8.5	9.9	11.4	10.9	9.8	10.4	10.15	1.02	10.04
Emulsion Stability mL/g	23.6	33.8	29.3	25.6	30.1	32.2	29.10	3.87	13.29
Least Gelation Capacity %	8	14	10	12	12	10	10.83	1.99	13.27
Bulk Density g/cm <sup>3</sup>	0.38	0.63	0.69	0.61	0.42	0.69	0.57	0.10	17.54

The differences in the functional properties between raw and boiled, raw and cooked, raw and roasted, raw and sprouted, and raw and fermented samples are shown in Table 2. Boiling, cooking, sprouting and fermenting increased the water absorption capacity of the pinto bean flour by 36.0, 32.0, 30.0 and 22.0%, respectively when compared with the raw dried seed while roasting lowered it. The decrease implies that heat tended to block the tissue pores. This result is in agreement with report on defatted fluted pumpkin seed flour where it was reported that processing improved the WAC of that seed flour (Fagbemi *et al.*, 2006). The result suggests that the processed seed flour can be used as a thickener in food system (Del Rosario and Flores, 1981).

Processing also affected the OAC significantly ( $p \leq 0.05$ ) (Table 2). Boiling, cooking, sprouting and fermenting increased the oil absorption capacity of the seed flour by 30.0, 11.0, 22.0 and 33.0%, respectively while roasting reduced it by 4.0%. This is in contrast to report that heat treatment generally increased OAC (Olaofe *et al.*, 2010). Observations were made by Esuoso *et al.* (1998) and Giami (1993) that processing methods such as fermenting, boiling, cooking and roasting enhanced OAC. The result suggests that processed pinto bean flour has less hydrophobic interaction sites (non-polar side chains) so could bind the hydrocarbon side chains of the oil, hence the higher OAC values more than the raw sample (Adebowale and Lawal, 2004). Therefore, pinto bean flour would be potentially useful for their structural interactions in food, especially for flour retention, and to improve palatability and extension of shelf life in bakery or meat products, in which fat absorption is desirable (Fennema, 2000). Processing affected the foaming capacity of pinto bean seed flour (Table 2). Boiling, roasting, sprouting and fermenting increased the foaming capacity of pinto bean flour while cooking reduced it. Foaming capacity is dependent on the protein. The reduction in cooking could be as a result of protein denaturation (Adebowale and Lawal, 2004). Foaming stability was also affected by processing. Boiling and fermenting enhanced foaming stability by 7.7% and 2.2%, respectively. Consequently cooking, roasting and sprouting reduced foaming by 1.9, 15.9 and 6.7%, respectively. This indicates that the processed pinto beans gave higher stability.

**Table 2: Difference in the functional properties of the raw and processed pinto bean**

Properties	I-II	I-III	I-IV	I-V	I-VI	Mean	SD	CV%
Water Absorption Capacity %	-36.0	-32.0	10.0	-30.0	-22.0	26.00	10.29	39.57
Oil Absorption Capacity %	-30.0	-11.0	4.0	-22.0	-33.0	12.00	12.34	61.70
Foaming Capacity %	-0.8	2.3	-4.1	-0.4	-1.4	1.80	1.46	81.11
Foaming Stability %	-7.7	1.9	15.9	6.7	-2.2	6.88	3.44	50.00
Emulsion Capacity mL/g	-1.4	-2.9	-2.4	-1.3	-1.9	1.98	0.67	33.83
Emulsion Stability mL/g	-10.2	-5.7	-2.0	-6.5	-8.6	6.60	3.11	47.12
Least Gelation Capacity %	-6.0	-2.0	-4.0	-4.0	-2.0	3.00	1.05	25.34
Bulk Density g/cm <sup>3</sup>	-0.25	-0.31	-0.23	-0.04	-0.31	0.18	0.12	68.33

I = Raw; II = Boiled; III = Cooked; IV = Roasted; V = Sprouted; VI = Fermented

All the processing methods (boiling, cooking, roasting, sprouting and fermenting) increased emulsion capacity and stability. The increase is such that cooking > roasting > fermenting > boiling > sprouting (2.9, 2.4, 1.9, 1.4, & 1.3%). The emulsion stability was 10.2% (boiling), 8.6% (fermenting), 6.5% (sprouting), 5.7% (cooking) and 2.0% (roasting). Boiling, cooking, roasting, sprouting and fermenting progressively increased the gel forming ability of the pinto bean seed flour. The increase was 9.0% for boiling, roasting and sprouting (6.0%), cooking

and fermenting (4.0%), respectively. All the processing methods significantly ( $p \leq 0.05$ ) affected the bulk density of the pinto bean seed flours. Boiling, cooking, roasting, sprouting and fermenting methods increased BD content by 65.8, 81.6, 60.5, 10.5 and 81.6%, respectively.

Figure 1 shows the protein solubility of pinto beans flour. Minimum protein solubility was observed at pH 4 for pinto cooked, pinto fermented, pinto boiled, pinto roasted while that of the raw and sprouted was at pH 5.0. The maximum protein solubility was observed at pH 9-9.40 for both the raw and processed pinto bean flour. At the either side of pH 4-5.2, there was an increase in protein solubility. The pH range of 4-5.0 was the isoelectric point (IEP) of the raw and processed pinto bean flour. Similar observation of this trend has been reported by Fagbemi & Oshodi (1991). Generally, vegetable proteins have been reported to have IEP at about pH 4-5 and show high protein solubility at alkaline pH (Chau and Cheung, 1998). The dependency of protein solubility on pH has been attributed to the change in the net charges carried by the protein as the pH changes. Pinto bean seed flour irrespective of the processing method showed similar protein solubility trend (Fig 1).

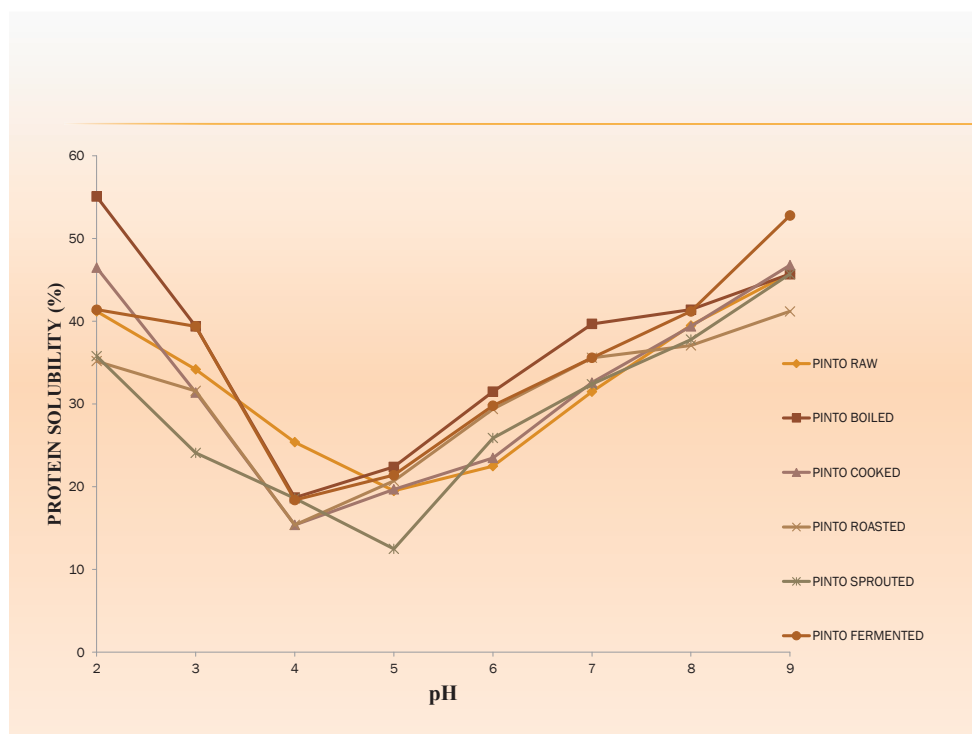


Fig. 1: Protein solubility of pinto bean flour

Boiling, roasting and sprouting reduced the protein solubility ( $p \leq 0.05$ ) of pinto bean flour. Some researchers (Padmashree *et al.*, 1987; Giamin and Bakebain, 1992) have reported similar results. Cooked and fermented pinto bean flour enhanced protein. Lin *et al.* (1974) reported similar observation on sunflower flour and soy bean proteins. Therefore, raw dried, cooked and fermented pinto bean flours may be useful in vegetable milk production. The low protein solubility was observed in boiled, roasted and sprouted of the pinto bean flour may be due to heat denaturation and precipitation of the pinto seed protein (Narayana and Narasinga Rao, 1984). Heat-treated protein caused irreversible denaturation leading to association of the polypeptide chains as high molecular weight compounds (Wolf, 1970).

#### 4. Conclusion

Functional properties of raw and processed pinto bean (*Phaseolus vulgaris* L.) seed flour were presented in this study. The results revealed that all the raw and processed pinto bean seed flours were found to possess good water and oil absorption capacities, foaming capacity and stability, emulsion capacity and stability, bulk density and gelation property. The solubility of the flour was high enough, making them potentially useful in some food formulations. It was found that processing significantly ( $p \leq 0.05$ ) affected the content of some functional properties in pinto bean seeds.

## 5. References

- Adebowale, K.O. and Lawal, O.S. (2004). Comparative study of the functional properties of bambara groundnut (*Voadzea subterranea*), jack bean (*Canavalia ensiformis*) and mucuna bean (*Mucana pruriens*) flours. *Food Research International*, 37: 355 – 365.
- Adeyeye, E.I. and Adamu, A.S. (2005). Chemical composition and food properties of *Gymnarchus niloticus* (trunk fish). *Bioscience Biotechnology Research Asia*, 3(2): 265 – 272.
- Adeyeye, E.I., Oshodi, A.A. and Ipinmoroti, K.O. (1994). Functional properties of some varieties of African yam bean flour. *International Journal of Food Science Nutrition*, 45: 829 – 836.
- Akpanunam, M.A. and Markakis, D. (1981). Physicochemical and nutritional aspects of cowpea flour. *Journal of Food Science*, 46: 972 – 973.
- Aluko, R.E. and Yada, R.Y. (1995). Structure function relationship of cowpea (*Vigna unguiculata*) globulin isolate: Influence of pH and NaCl on physicochemical and functional properties. *Food Chemistry*, 53: 259 – 265.
- Aremu, M.O. and Ekunode, O.E. (2008). Nutritional evaluation and functional properties of *Clarias lazera* (African catfish) from river Tammah in Nasarawa State, Nigeria. *American Journal of Food Technology*, 3(4): 264 – 274.
- Aremu, M.O., Atolaiye, B.O., Pennap, G.R.I. and Ashika'a, B.T. (2007b). Proximate and amino acid composition of mesquite bean (*Prosopis africana*) protein concentrate. *Indian Journal of Botanic Research*, 3: 97 – 102.
- Aremu, M.O., Olaofe, O. and Akintayo, E.T. (2006). A comparative study on the chemical and amino acid composition of some Nigerian under-utilized legume flours. *Pakistan Journal of Nutrition*, 5(1): 34 – 38.
- Aremu, M.O., Olaofe, O. and Akintayo, E.T. (2007a). Functional properties of some Nigerian varieties of legume seed flours and flour concentration effect on foaming and gelation properties. *Journal of Food Technology*, 5: 109 – 115.
- Aremu, M.O., Olaofe, O., Basu, S.K., Abdulazeez, G. and Acharya, S.N. (2010). Processed cranberry bean (*Phaseolus coccineus*) seed flours for African diet. *Canadian Journal of Plant Science*, 90: 719 – 928.
- Audu, S.S. and Aremu, M.O. (2011). Effect of processing on amino acid composition of pinto bean (*Phaseolus vulgaris* L.) grown in Plateau State, Nigeria. Presented at the 34<sup>th</sup> Annual International Conference of Chemical Society of Nigeria at Unilorin, Kwara State, Nigeria, 19<sup>th</sup> – 23<sup>rd</sup> September, 2011. *Book of Proceedings, ANA*: 98 – 106.
- Audu, S.S., Aremu, M.O. and Lajide, L. (2011). Effect of processing on fatty acid composition of pinto bean (*Phaseolus vulgaris* L.) seeds. *International Journal of Chemical Sciences*, 4(1): 114 – 119.
- Audu, S.S., Aremu, M.O. and Lajide, L. (2013). Influence of traditional processing methods on the nutritional composition of black turtle bean (*Phaseolus vulgaris* L.) grown in Nigeria. *International Food Research Journal*, 20(6): 3211 – 3220.
- Awolumate, E.O. (1983). Chemical composition of some under-exploited leguminous crop-seeds in Nigeria. *Journal of Agric & Food Chemistry*, 34: 189 – 192.
- Beuchat, L.R. (1977). Functional and electrophoretic characteristics of succinylated peanut flour protein. *Journal of Agriculture & Food Chemistry*, 25: 238 – 261.
- Chau, C.F. and Cheung, P.C.K. (1998). Functional properties of flours prepared from three Chinese indigenous legume seed. *Food Science Chemistry*, 61: 429 – 433.
- Chou, D. and Morr, C.U. (1979). Protein-water interactions and functional properties. *American Oil Chemical Society*, 56: 53 – 58.
- Coffman, C.W. and Garcia, V.V. (1977). Functional properties and amino acid content of a protein isolate from mung bean flour. *Journal of Food Technology*, 12: 473 – 484.
- Copeland, L.O. (1976). *Principles of Seed and Technology*. Bourgeoss Publication Company, pp. 37 – 53.
- Davendra, C. 1995. Tropical legumes for small ruminants. In: *Tropical Legumes in Animal Nutrition*. D'mello, J.P.F. and Davendra, C. (eds.). Wallingford, CAB International, Oxford, pp. 58 – 98.
- Del Rosario, R.R. and Flores, D.M. (1981). Functional properties of four types of mug bean flour. *Journal of Science Food & Agriculture*, 32: 175 – 180.
- Esuoso, K., Lutz, H. Kutubaddin, M. and Bayer, E. (1998). Chemical composition and potential of some underutilized tropical biomass 1. Fluted pumpkin (*Telfairia occidentalis*). *Food Chemistry*, 61: 487 – 492.
- Fagbemi, T.N. and Oshodi, A.A. (1991). Chemical composition and functional properties of full-fat pumpkin seed (*Telfairia occidentalis*) flour. *Nigerian Food Journal*, 9: 26 – 32.
- Fagbemi, T.N., Oshodi, A.A. and Ipinmoroti, K.O. (2006). Effects of processing on the functional properties of full fat and defatted fluted pumpkin (*Telfairia occidentalis*). *Journal of Food Technology*, 4(1): 70 – 79.

- Fennema, O. (2000). *Química de los Alimentos*. Editorial AACriba, pp. 434 – 444.
- Giami, S.Y. (1993). Effect of processing on the proximate composition and functional properties of cowpea (*Vigna unguiculata*) flour. *Journal of Food Chemistry*, 47: 153 – 158.
- Giamin, S.Y. and Bakebain, O.A. (1992). Proximate composition and functional properties of raw and processed full fat fluted pumpkin (*Telfaria occidentalis*) seed flour. *Journal of Science Food & Agriculture*, 59: 321 – 325.
- Gorge, D. and Pamplona–Roger, M.D. (2005). Foods for reproduction. *Encyclopedia of Foods and their Healing Power*, 2: 264 – 274.
- Kinsella, J.E. (1979). *Journal of the American Oil Chemists Society*, 56: 242 – 258.
- Lin, M.J.Y., Humbert and Sosulski, F.W. (1974). Certain functional properties of sun flower meal products. *Journal of Food Science*, 29, 368 – 370.
- Lyimo, M., Mugula, J. and Elias, T. (1992). Nutritive composition of broth from selected bean varieties cooked for various periods. *Journal of Science Food & Agriculture*, 58: 535 – 539.
- Narayana, K. and Narasinga Rao, M.S. (1984). Effect of partial proteolysis on the functional properties of winged bean (*Phosphorcapus tetragonolobus*) flour. *Journal Food Science*, 49: 944 – 947.
- Ogunghenle, H.N., Oshodi, A.A. and Oladimeji, M.O. (2005). Chemical and energy and evaluation of some underutilized legume flours. *La Rivista Delle Sostanze Grasse*, 82: 204 – 208.
- Ogunlade, I., Olaofe, O. and Fadare, T. (2005). Chemical composition, amino acid and functional properties of (*Leucaena leucocephala*) seeds flour. *Nigerian Journal of Applied Science*, 21: 7 – 12.
- Olaofe, O. Famurewa, J.A. V. and Ekuagbere, A.O. (2010). Chemical and functional properties of kidney bean seed (*Phaseolus vulgaris* L.) flour. *International Journal of Chemical Sciences*, 3(1): 51 – 69.
- Olaofe, O., Adeyemi, F.O. and Adediran, G.O. (1994). Amino acid, chemical compositions and functional properties of some oil seeds. *Journal of Agriculture & Food Chemistry*, 42(4): 879 – 881.
- Olaofe, O., Umar, Y.O. and Adediran, G.O. (1993). The effect of nematicides on the nutritive value and functional properties of cowpea seeds. *Food Chemistry*, 46: 337 – 342
- Oshodi, A.A. and Adeladun, M.O.A. (1993). Proximate composition, some valuable minerals and functional properties of three varieties of lima bean (*Phaseolus lunatus* Linn) flour. *International Journal of Food Science Nutrition*, 43: 181 – 185.
- Oshodi, A.A. and Ekperigin, M.M. (1989). Functional properties of pigeon pea flour. *Food Chemistry*, 34: 187 – 191.
- Oshodi, A.A., Ipinmoroti, K.O. and Adeyeye, E.T. (1997). Functional properties of some varieties of African yam bean flour. *International Journal of Food Science Nutrition*, 48, 243 – 250.
- Oshodi, A.A., Ogunghenle, H.N. and Oladimeji, M.O. (1999). Chemical composition, nutritionally valuable minerals functional properties of benniseed, pear–millet and quinoa flours. *Journal of Food Science*, 50: 325– 331.
- Padmashree, T.S., Vijayalakshmi, L. and Puttaraj, S (1987). Effects of traditional processing on the functional properties of cowpea (*Vigna cajan*) flour. *Journal of Food Technology*, 24: 221 – 226.
- Wolf, W.J. (1970). Soybean protein, their functional chemical and physical properties. *Journal Agriculture & Food Chemistry*, 18: 969.

The IISTE is a pioneer in the Open-Access hosting service and academic event management. The aim of the firm is Accelerating Global Knowledge Sharing.

More information about the firm can be found on the homepage:  
<http://www.iiste.org>

## CALL FOR JOURNAL PAPERS

There are more than 30 peer-reviewed academic journals hosted under the hosting platform.

**Prospective authors of journals can find the submission instruction on the following page:** <http://www.iiste.org/journals/> All the journals articles are available online to the readers all over the world without financial, legal, or technical barriers other than those inseparable from gaining access to the internet itself. Paper version of the journals is also available upon request of readers and authors.

## MORE RESOURCES

Book publication information: <http://www.iiste.org/book/>

## IISTE Knowledge Sharing Partners

EBSCO, Index Copernicus, Ulrich's Periodicals Directory, JournalTOCS, PKP Open Archives Harvester, Bielefeld Academic Search Engine, Elektronische Zeitschriftenbibliothek EZB, Open J-Gate, OCLC WorldCat, Universe Digital Library, NewJour, Google Scholar

