

Technical Disclosure Commons

Defensive Publications Series

May 01, 2017

Device-Specific Keywords To Invoke Control Settings

Brant Candelore

Mike Nejat

Peter Shintani

Follow this and additional works at: http://www.tdcommons.org/dpubs_series

Recommended Citation

Candelore, Brant; Nejat, Mike; and Shintani, Peter, "Device-Specific Keywords To Invoke Control Settings", Technical Disclosure Commons, (May 01, 2017)

http://www.tdcommons.org/dpubs_series/483



This work is licensed under a [Creative Commons Attribution 4.0 License](https://creativecommons.org/licenses/by/4.0/).

This Article is brought to you for free and open access by Technical Disclosure Commons. It has been accepted for inclusion in Defensive Publications Series by an authorized administrator of Technical Disclosure Commons.

DEVICE-SPECIFIC KEYWORDS TO INVOKE CONTROL SETTINGS

IPD #201605710

ABSTRACT

A system and method are disclosed for providing access to a menu of options via voice control. The user intending to control a device accesses the device or appliance using a specific voice command. The command may be a "generic" keyword that can be applied to the assistant located on any device, for example, "Appliance Control". Alternatively, device-specific keywords could also be used. On receiving the command, the device assistant shows menu options to the user. The user may voice further keywords to select the desired menu option, after which the assistant sets the option. Advantages of the system and method include easier control for visual or mobility impaired persons.

BACKGROUND

Devices currently provide contextual assistance through the invocation of a "key word" to get the assistant's attention. The assistant does not know that it is on a particular device and may as well be on a PC or be standalone. The assistants are more like portals for generic search and cannot be used to control the device itself.

DESCRIPTION

A system and method are disclosed for providing access to a menu of options via voice control. The system envisages use of voice activation commands to activate the assistant to control any appliance. The method operates as illustrated in FIG. 1. The user intending to control a device accesses the device or appliance using a specific voice command. The method may involve using a "generic" key word that can be applied to the assistant located on any device, for example, "Appliance Control". On receiving the command, the device assistant shows menu

options to the user. The user may voice further keywords to select the desired menu option, after which the assistant sets the option.

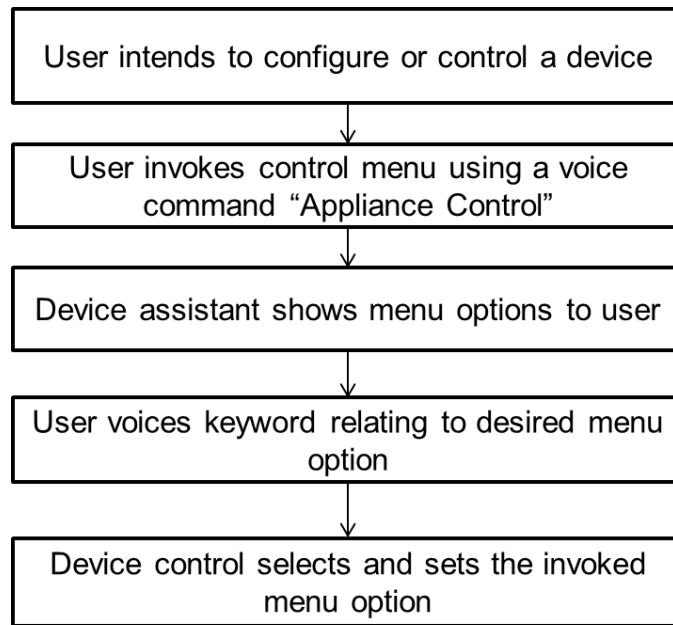


FIG. 1: Method of accessing control options on a device using voice commands

Alternatively, the voice commands for accessing controls could be device specific. For example, if the search assistant is on a TV, the user may say "TV Control", "settings", etc. to access the controls. The "TV Control" would be a key word to immediately provide a path to the TV's settings menu. The user can say "Refrigerator Control", and then be into the refrigerator menu system, etc.

Advantages of the system and method include easier control for visual or mobility impaired persons.