

Computer Engineering and Intelligent Systems
ISSN 2222-1719 (Paper) ISSN 2222-2863 (Online)
Vol 3, No.2, 2012

www.iiste.org



Similarity of Inference Face Matching On Angle Oriented Face Recognition

R.N.V.Jagan Mohan¹, R.SubbaRao² and Dr.K.Raja Sekhara Rao³

1. Research Scholar, Acharya Nagarjuna University, Mobile: 91-9848957141, Email: mohanmvj@gmail.com

2. Shri Vishnu Engineering College for Women, Bhimavaram-534202, Andhra Pradesh, India, rsr_vishnu@rediffmail.com.

3. Prinsipal, K.L. University, Vaddeswaram, Guntur-522510, email: rajasekhar.kurra@klce.ac.in

Abstract: Face Recognition is a well-known image processing technique that has been used in many applications like Law enforcement security, Bio-Metric Systems etc. In this paper complete image of face recognition algorithm is proposed. In the prepared algorithm the local information is extracted using angle oriented discrete cosine transforms and invokes certain normalization techniques. To increase the Reliability of the Face detection process, neighborhood pixel information is incorporated into the proposed method. Also this study analyzes and compares the obtained results from the proposed Angle oriented face recognition with threshold based face detector to show the level of robustness using texture features in the proposed face detector. It was verified that a face recognition based on textual features can lead to an efficient and more reliable face detection method compared with KLT (Karhunen Loeve Transform), a threshold face detector.

Keywords: Angle Oriented, Euclidian Distance, Face Recognition, Feature Extraction, Image texture features.

Introduction

Many authors discussed the face recognition by comparing the face of human being with the database and identifying the features of image. Face Recognition has received considerable attention over past two decades, where variation caused by illumination is most significant factor that alerts the appearance of face [15]. The database of system consists of individual facial features along with their geometrical relations. So for the input taken the facial features are compared with the database. If a match is found the face of the person is said to be recognized. In this process we consider feature extraction capabilities of discrete cosine transform (DCT) and invoke certain normalization techniques which increase its robust face recognition.

The face recognition falls in to two main categories, Chellappa et al., 1995[5]; they are (i) feature-based and (ii) holistic. Feature-based approach to face recognition relies on detection and characterization of the individual facial features like eyes, nose and mouth etc, and their geometrical relationships. On the other hand, holistic approach to face recognition involves encoding of the entire facial image. Earlier works on face recognition as discussed by Ziad M.Hafed and Martin Levine 2001 [17], Ting Shan et al 2006 [14], are considered. Alaa Y. Taqa and Hamid A. Jalab 2010 [1, 2] are proposed color-based or texture-based skin detector approaches.

In this paper we discussed a new computational approach that is converting the input image to database image using Angle orientation technique in section1. Section 2 deals with the mathematical definition of the discrete cosine transform and its relationship to KLT. The basics of face recognition system using DCT that includes the details of proposed algorithm and discussion of various parameters which affect its performance are discussed in section 3. The experimental results of the proposed system are highlighted in section 4. The conclusion and future perceptsives are mentioned in section 5.

1. Angle Orientation

First the input image is selected and compared with the database image. If input image size is not equivalent to database size, the input image is to be resized to match with the size of database image. We compare the pose of the image in both input and database images. If the input image is not at an angle of

90^0 we can't compare the images; some authors Ziad. M. Hafd and Martine D. Levine (2001) [17] used eye coordinates techniques to recognize such an image. In this approach one can identify the feature images of the faces even though they are angle oriented. If the input image angle is not 90^0 , rotate the image to 90^0 and then apply normalization technique such as geometric and illumination technique. Recognition of an image by using rotational axis is easy to achieve or recognize the face. When the input image rotates from horizontal axis to vertical axis the face rotates anti-clock wise and the face appears in which it is the same as the database pose, then the object is recognized. Similarly, when the input image rotates from vertical axis to horizontal axis the face rotates clock wise and the face appears in which it is the same as the database pose, then the object is recognized. Therefore if input image is Angle oriented, the pose is changed or Angle is altered using rotational axis and then compared.

The Two types of angle rotations, clock wise and Anti-clock wise, with different angles are given in the images of Figure.1.1 and Figure 1.2.

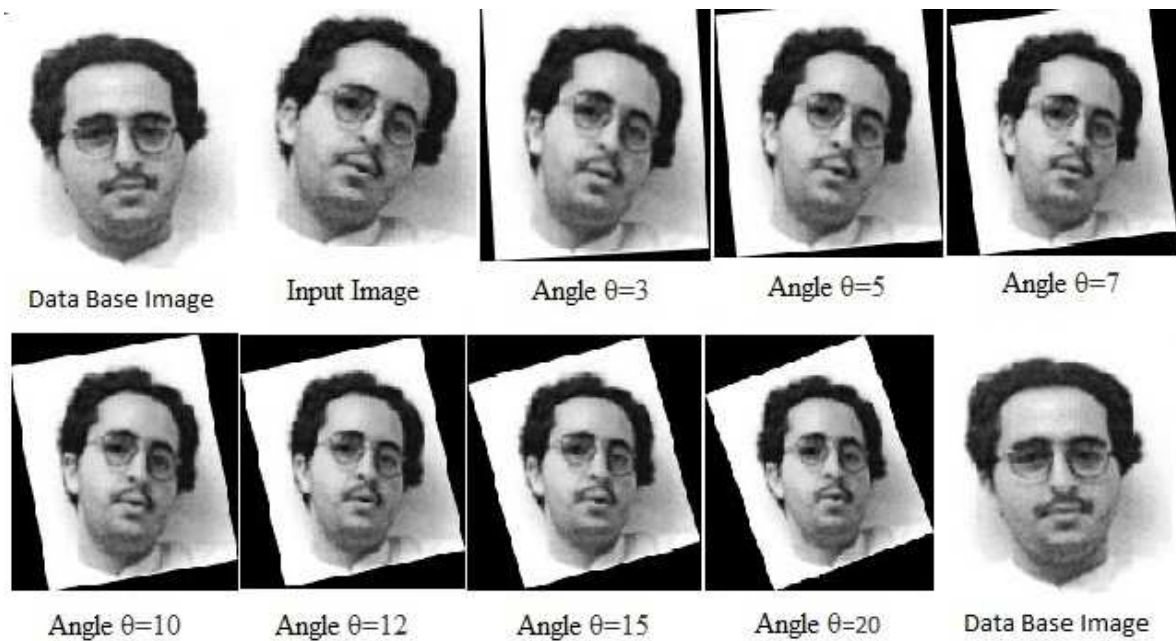


Figure1.1: Angle Rotation – Anti Clock Wise Direction



Figure1.2: Angle Rotation – Clock Wise Direction

2.0. Discrete Cosine Transform

Discrete cosine transform (DCT) has been used as a feature extraction step in various studies on face recognition [8, 9, 11, 12, and 17]. Until now, discrete cosine transforms have been performed either in a holistic appearance-based sense [7], or in a local appearance-based sense ignoring the spatial information to some extent during the classification step by feeding some kind of neural networks with local DCT coefficients or by modelling them with some kind of statistical tools [8,9,11,12,17].

Ahmed, Natarajan, and Rao (1974) first introduced the discrete cosine transform (DCT) in the early seventies. Ever since, the DCT has grown in popularity, and several variants have been proposed (Rao and Yip, 1990) [10]. In particular, the DCT was categorized by Wang (1984) [16] into four slightly different transformations named DCT-I, DCT-II, DCT-III, and DCT-IV. Of the four classes we concern with DCT-II suggested by Wang, in this paper.

$$y(k, 1) = w(k) \sum_{n=1}^N x(n) \cos \frac{\pi(2n-1)(k-1)}{2N}, k = 1, \dots, N \quad (2.1.1)$$

Where

$$w(k) = \begin{cases} \frac{1}{\sqrt{N}}, & k = 1 \\ \frac{\sqrt{2}}{N}, & 2 \leq k \leq N \end{cases} \quad (2.1.2)$$

N is the length of x; x and y of the same size. If x is a matrix, DCT transforms its columns. The series is indexed from n = 1 and k = 1 instead of the usual n = 0 and k = 0 because vectors run from 1 to N instead of 0 to N-1. Using the formulae (2.1.1) and (2.1.2) we find the feature vectors of an input sequence using discrete cosine transform.

2.1. Similarity Matching Methods

The main objective of similarity measures is to define a value that allows the comparison of feature vectors (reduced vectors in discrete cosine transform frameworks). With this measure the identification of a new feature vector will be possible by searching the most similar vector into the database. This is the well-known nearest-neighbor method. One way to define similarity is to use a measure of distance, $d(\mathbf{x}, \mathbf{y})$, in which the similarity between vectors, $S(\mathbf{x}, \mathbf{y})$ is inverse to the distance measure. In the next sub-sections distance measures are shown (Euclidean) and similarity measures (Cosine).

Euclidean Distance

$$D(\mathbf{x}, \mathbf{y}) = \sqrt{(\mathbf{x}-\mathbf{y})^T(\mathbf{x}-\mathbf{y})} \quad \text{---4.0.1}$$

Cosine Similarity

$$S(\mathbf{x}, \mathbf{y}) = \cos(\mathbf{x}, \mathbf{y}) = \frac{\mathbf{x}^T \mathbf{y}}{\|\mathbf{x}\| \cdot \|\mathbf{y}\|} \quad \text{---4.0.2}$$

2.2. Relationship with KLT

Karhunen-Loeve Transform (KLT) is a unitary transform that diagonalizes the covariance or the correlation matrix of a discrete random sequence. Also it is considered as an optimal transform among all discrete transforms based on a number of criteria. It is, however, used infrequently as it is dependent on the

statistics of the sequence i.e. when the statistics changes so as the KLT. Because of this signal dependence, generally it has no fast algorithm. Other discrete transforms such as cosine transform (DCT) even though suboptimal; have been extremely popular in video coding. The principal reasons for the heavy usage of DCT are that it is signal independent and it has fast algorithms resulting in efficient implementation. In spite of this, KLT has been used as a bench mark in evaluating the performance of other transforms. Furthermore, DCT closely approximates the compact representation ability of the KLT, which makes it a very useful tool for signal representation both in terms of information packing and in terms of computational complexity due to its data independent nature.

3. Basic Algorithm for Angle Oriented Face Recognition using DCT

The basic algorithm for Angle Oriented Face Recognition discussed in this paper is depicted in figure 3.1. The algorithm involves both face normalization and Recognition. Mathew Turk and Alex Pentland [15] expanded the idea of face recognition. It can be seen in the figure 3.1 that the system receives input image of size $N \times N$ and is compared with the size of database image, if the input image and database image are not equal, is to be resized the image. While implementing an image processing solution, the selection of suitable illumination is a crucial element in determining the quality of the captured images and can have a huge effect on the subsequent evaluation of the image. If the pose of the selected image is required to rotate to obtain the database image rotate the face with an angle θ until it matches with the database image. The rotation of the image may be bidirectional, clock wise or anti-clock wise, depending on the selected pose of the image.

Once a normalized face obtained, it can be compared with other faces, under the same nominal size, orientation, position, and illumination conditions. This comparison is based on features extracted using DCT. The input images are divided into $N \times N$ blocks to define the local regions of processing. The $N \times N$ two-dimensional Discrete Cosine Transform (DCT) is used to transform the data into the frequency domain. Thereafter, statistical operators that calculate various functions of spatial frequency in the block are used to produce a block-level DCT coefficient.

To recognize a particular input image or face, the system compares this image feature vector to the feature vector of database faces using a Euclidean Distance nearest neighbor classifier [6] (Duda and Fart, 1973). After obtaining the Euclidean Distances for $N \times N$ Matrix one needs to find the averages of the each column of the matrix, and then find the average of all these averages, if the overall average is negative we may say there is a match between the input image and database image.

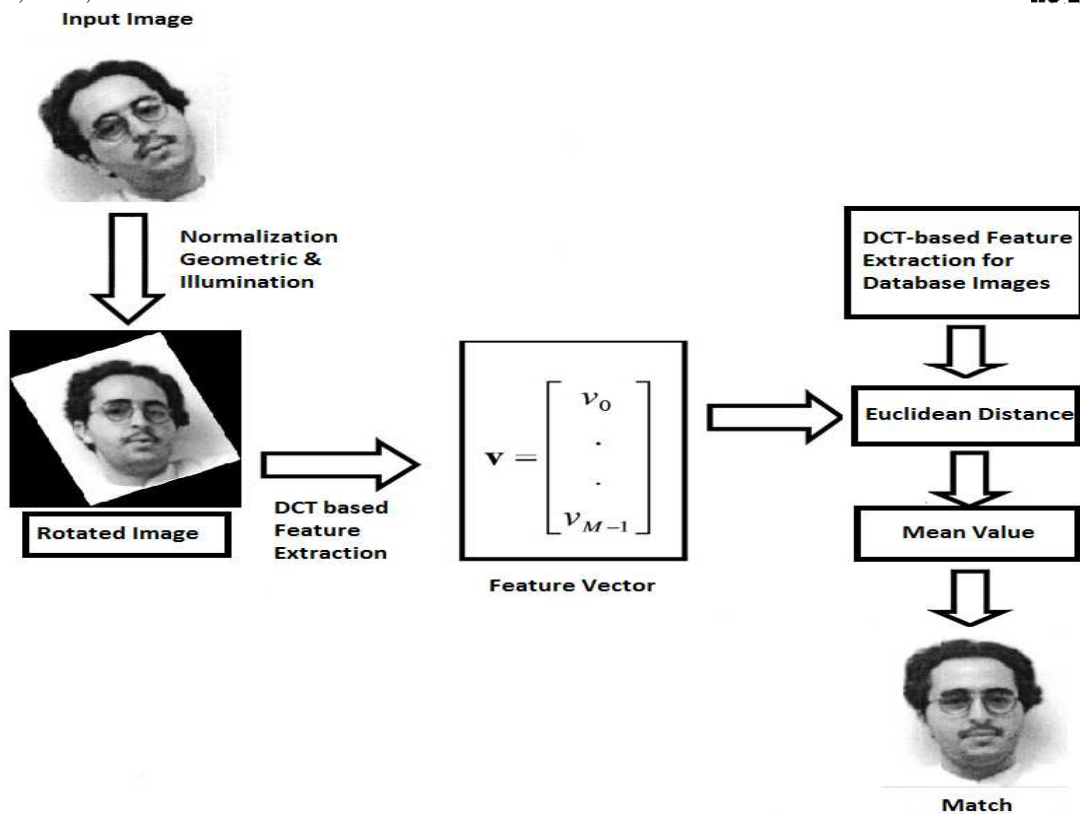


Figure 3.1: Angle Oriented Face Recognition using DCT

4.0. Experimental Results

4.1. Clock wise Rotation

The experimental Results are calculated for various angles of θ in clock wise direction using the two methods DCT with Euclidean Distance and DCT with Cosine Similarity. The mean recognition values of two methods are measured. Out of a sample of 13 observations 12 are recognized. The percentage of recognition for DCT with Euclidean distance and Cosine Similarity is 92.31% and the same for is 80%.

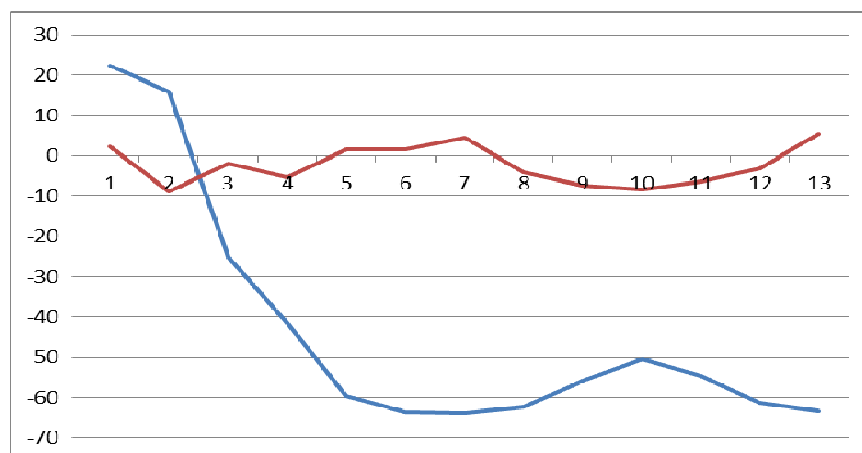


Figure 4.1.2: Graph for Clock wise Angle Oriented Face Recognition Using DCT with Euclidean Distance and Cosine Similarity

The obtained data was presented in Figure 4.1.2. In Figure 4.1.2 the red line indicates the recognition level for KLT and that of blue gives for DCT. It can be observed that the recognition level of input image in DCT is very high. It is also noticed that as the sample size is increasing the recognition level is also increasing in DCT while comparing with KLT.

4.2. Anti-Clock wise

The same methodology as that of clock wise rotation is maintained in anti-clock wise rotation, as well. The mean recognition values of DCT with Euclidean distance and DCT with Cosine Similarity for the both methods are calculated for several values of θ using Anti-Clock wise direction. In this method also DCT with Euclidean Distance has shown high reliability of recognition level because the percentage of recognition is 92.30% whereas the same is 85.46% in DCT with Cosine Similarity. In Figure 4.2.2 the results are shown graphically, we can find the rapid decrease in the graph for DCT which showed with blue colored line, indicates the high reliability of recognition of the input image.

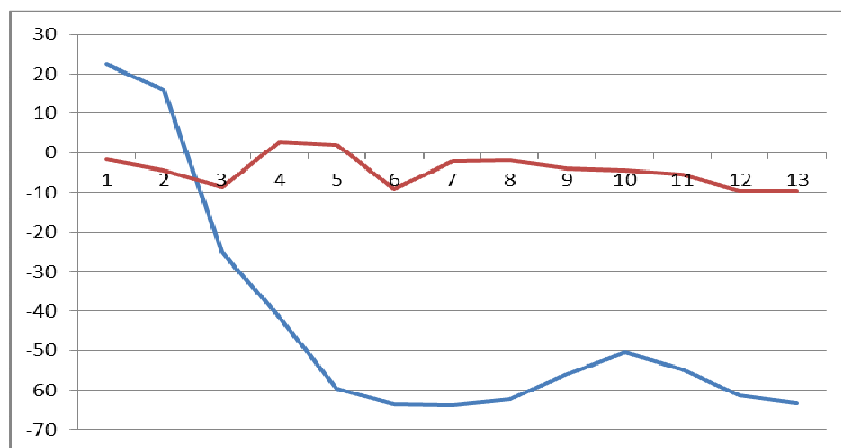


Figure 4.2.2: Graph for Anti-Clock wise Angle Oriented Face Recognition using Euclidean Distance and Cosine Similarity

4.3. Comparison between DCT and KLT

The DCT and KLT techniques are experimented under standard execution environment by considering the synthesized data of the students of Sri Vishnu Educational Society. The Percentage of recognition level in both the methods of experimental results is shown in Table 4.3.1. The phenomenal growth of DCT reliability is observed when compared with KLT.

The Performance of recognition level of 10000 records for both the methods of experimental results is given in Figure 4.3.2. The graph clearly shows that the reliability performance of DCT is constant increasing with respect to KLT while the number of records is increased.

| S. No. | No. of records | Performance in DCT | Performance in KLT |
|--------|----------------|--------------------|--------------------|
| 1 | 1000 | 91.46 | 65.42 |

| | | | |
|----|-------|-------|-------|
| 2 | 2000 | 92.01 | 64.23 |
| 3 | 3000 | 93.25 | 52.15 |
| 4 | 4000 | 94.12 | 54.12 |
| 5 | 5000 | 94.62 | 53.10 |
| 6 | 6000 | 96.5 | 52.63 |
| 7 | 7000 | 97.23 | 51.71 |
| 8 | 8000 | 97.56 | 50.46 |
| 9 | 9000 | 98.46 | 50.04 |
| 10 | 10000 | 98.89 | 54.13 |

Table 4.3.1: Performance Records in DCT and KLT

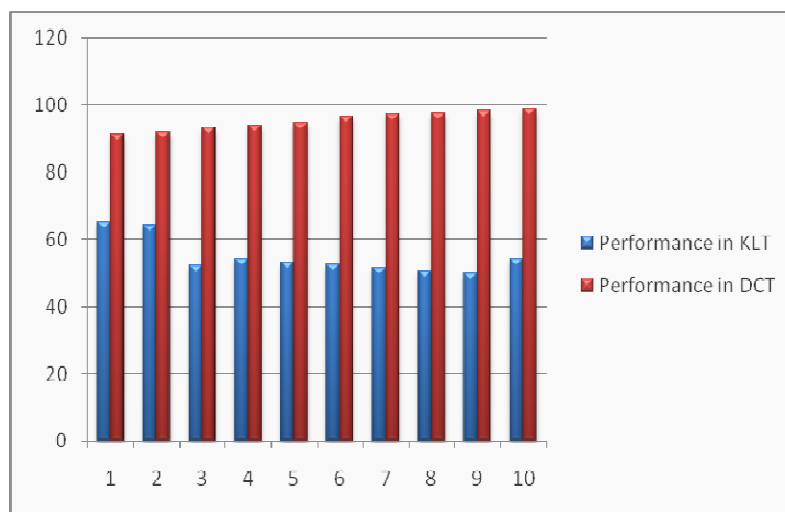


Figure 4.3.2: Bar Chart for Performance in DCT and KLT

5. Conclusion and Perspectives

Holistic approach to face recognition is used which has involved in encoding the entire facial image. An angle oriented algorithm which can be rotated either clock wise or anti clock wise directions is proposed and successfully implemented through the experimental results. The algorithm is proposed with the mean values of the Euclidian classifiers. It is proved that the proposed angle oriented discrete cosine transform increases the reliability of the face detection when compared with the KLT.

This approach has applications in Intrusion detection and new technologies like Biometric systems etc. The authors view a random variable which indicates the magnitude of the recognition level of an image which will follow some probability distribution.

References:

- [1]. Alaa Y.Taqa, Hamid A.Jalab, "Increasing the Reliability of Fuzzy Inference System Skin Detector" American Journal of Applied Sciences 7(8):1129-1138, 2010.

- [2]. Alaa Y.Taqa, Hamid A.Jalab, "Increasing the reliability of skin detectors" Scientific Research and Essays Vol.5(17),PP.2480-2490,4 September,2010.
- [3]. Almas Anjum, M., and Yunus Javed, M. "Face Images Feature Extraction Analysis for Recognition in Frequency Domain" Proc. of the 6th WSEAS Int. Conf. on Signal Processing, Computational Geometry & Artificial Vision, Elounda, Greece, 2006.
- [4]. Annadurai, S., and Saradha, A. "Discrete Cosine Transform Based Face Recognition Using Linear Discriminate Analysis" Proceedings of International Conference on Intelligent Knowledge Systems, 2004.
- [5]. Chellappa, R., Wilson, .C, and Sirohey, S. 1995. Human and machine recognition of faces: A survey. In Proc. IEEE, 83(5):705-740.
- [6]. Duda, R.O., and Hart, P.E. 1973 Pattern Classification and Scene Analysis. Wiley: New York, NY.
- [7]. Ekenel, H.K., and Stiefelhagen, R. "Local Appearance based Face Recognition Using Discrete Cosine Transform", EUSIPCO 2005, Antalya, Turkey, 2005.
- [8]. Nefian, A. "A Hidden Markov Model-based Approach for Face Detection and Recognition", PhD thesis, Georgia Institute of Technology, 1999.
- [9]. Pan, Z., and Bolouri, H. "High speed face recognition based on discrete cosine transforms and neural networks", Technical report, University of Hertfordshire, UK, 1999.
- [10]. Rao, K. and Yip, P. 1990. Discrete Cosine Transform-Algorithm, Advantages, Applications. Academic: New York, N.Y.
- [11]. Sanderson, and Paliwal, K.K. "Features for robust face based identity verification", Signal processing, 83(5), 2003.
- [12]. Scott, W.L. "Block-level Discrete Cosine Transform Coefficients for Autonomic Face Recognition", P.hd thesis, Louisiana State University, USA, May 2003.
- [13]. Shin, D., Lee, H.S., and Kim, D. "Illumination-robust face recognition using ridge regressive bilinear models", Pattern Recognition Letters, Vol.29, no.1, pp, 49-58, 2008.
- [14]. Ting Shan, Brain, Lovell, C., and Shaokang Chen. "Face Recognition to Head Pose from One sample Image" proceedings of the 18th International conference on Pattern Recognition, 2006.
- [15]. Turk, M., and Pentland, A. "Eigen faces for recognition", Journal of Cognitive Neuroscience, vol.3, no.1, pp.71-86, 1991.
- [16]. Wang, Z. 1984. Fast algorithms for the discrete W transform and for the Discrete Fourier Transform. IEEE Trans. Acoust., Speech, and Signal Proc., 32:803-816.
- [17]. Ziad Hafed, M., and Martin Levine, "Face Recognition using Discrete Cosine Transform", International Journal of Computer Vision 43(3), 167-188, 2001.

This academic article was published by The International Institute for Science, Technology and Education (IISTE). The IISTE is a pioneer in the Open Access Publishing service based in the U.S. and Europe. The aim of the institute is Accelerating Global Knowledge Sharing.

More information about the publisher can be found in the IISTE's homepage:

<http://www.iiste.org>

The IISTE is currently hosting more than 30 peer-reviewed academic journals and collaborating with academic institutions around the world. **Prospective authors of IISTE journals can find the submission instruction on the following page:**

<http://www.iiste.org/Journals/>

The IISTE editorial team promises to review and publish all the qualified submissions in a fast manner. All the journals articles are available online to the readers all over the world without financial, legal, or technical barriers other than those inseparable from gaining access to the internet itself. Printed version of the journals is also available upon request of readers and authors.

IISTE Knowledge Sharing Partners

EBSCO, Index Copernicus, Ulrich's Periodicals Directory, JournalTOCS, PKP Open Archives Harvester, Bielefeld Academic Search Engine, Elektronische Zeitschriftenbibliothek EZB, Open J-Gate, OCLC WorldCat, Universe Digital Library, NewJour, Google Scholar

