

11-20-1906

College Hall Architectural Drawing – First Floor Plan

The New Jersey State Normal School at Montclair

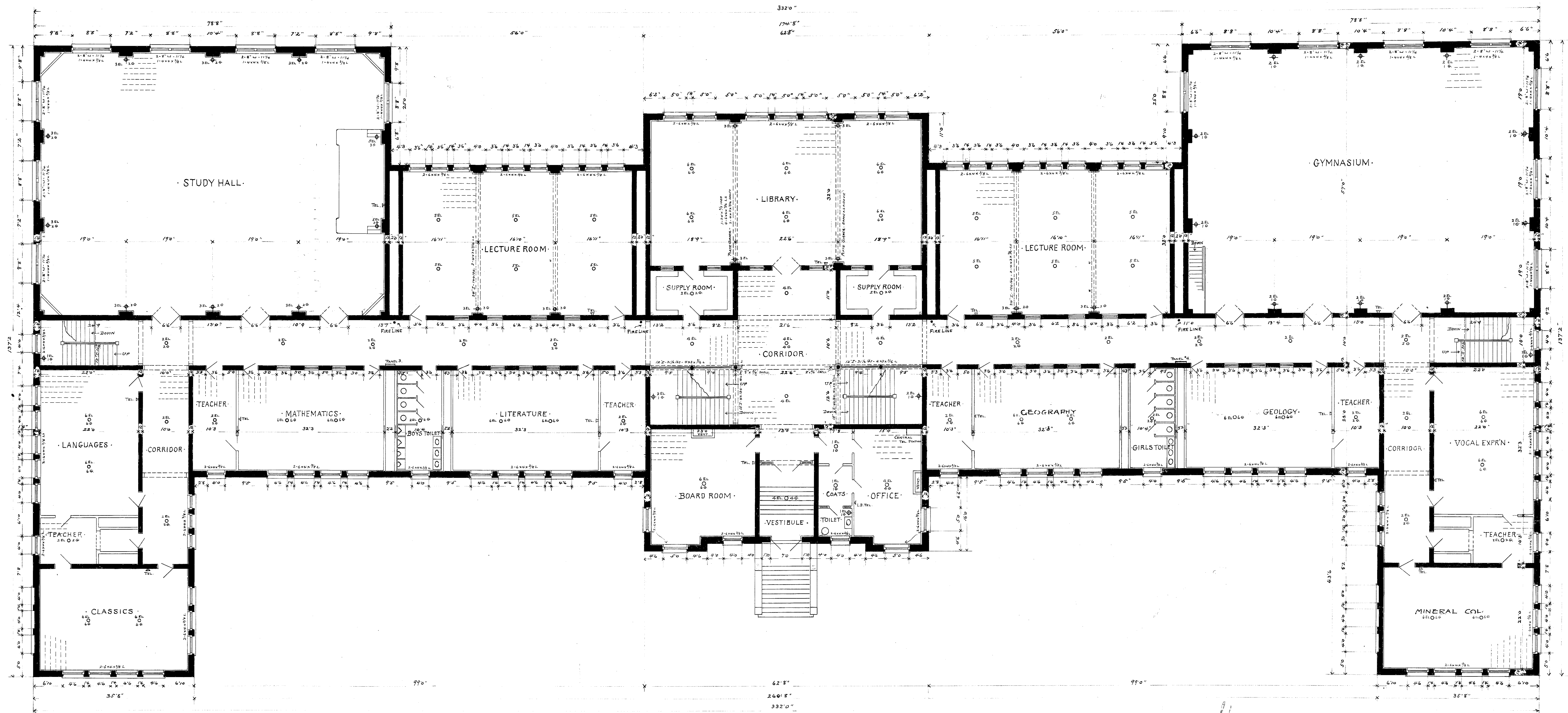
Department of Charities and Correction, Architects Office .

Follow this and additional works at: https://digitalcommons.montclair.edu/college_hall

Recommended Citation

The New Jersey State Normal School at Montclair and ., Department of Charities and Correction, Architects Office, "College Hall Architectural Drawing – First Floor Plan" (1906). *College Hall*. 6.
https://digitalcommons.montclair.edu/college_hall/6

This Book is brought to you for free and open access by the Architectural Drawings at Montclair State University Digital Commons. It has been accepted for inclusion in College Hall by an authorized administrator of Montclair State University Digital Commons. For more information, please contact digitalcommons@montclair.edu.



FIRST FLOOR PLAN
Scale 1/8" = 1'-0"

Approved
George Blough
 Com. Chairman
James L. Hays
 President
at test
Frederick Kilgus
 Secretary

DEPARTMENT OF CHARITIES AND CORRECTIONS
 BUILDING State Normal School
 MONTICELLO HEIGHTS
 DRAWN BY *Pringle J. Frohls*
 No. 29, 1946
 ARCHITECTS' OFFICE
 1111 N. 11th St., PITTSBURGH, PA.