

11-20-1906

College Hall Architectural Drawing – Second Floor Plan

The New Jersey State Normal School at Montclair

Department of Charities and Correction, Architects Office .

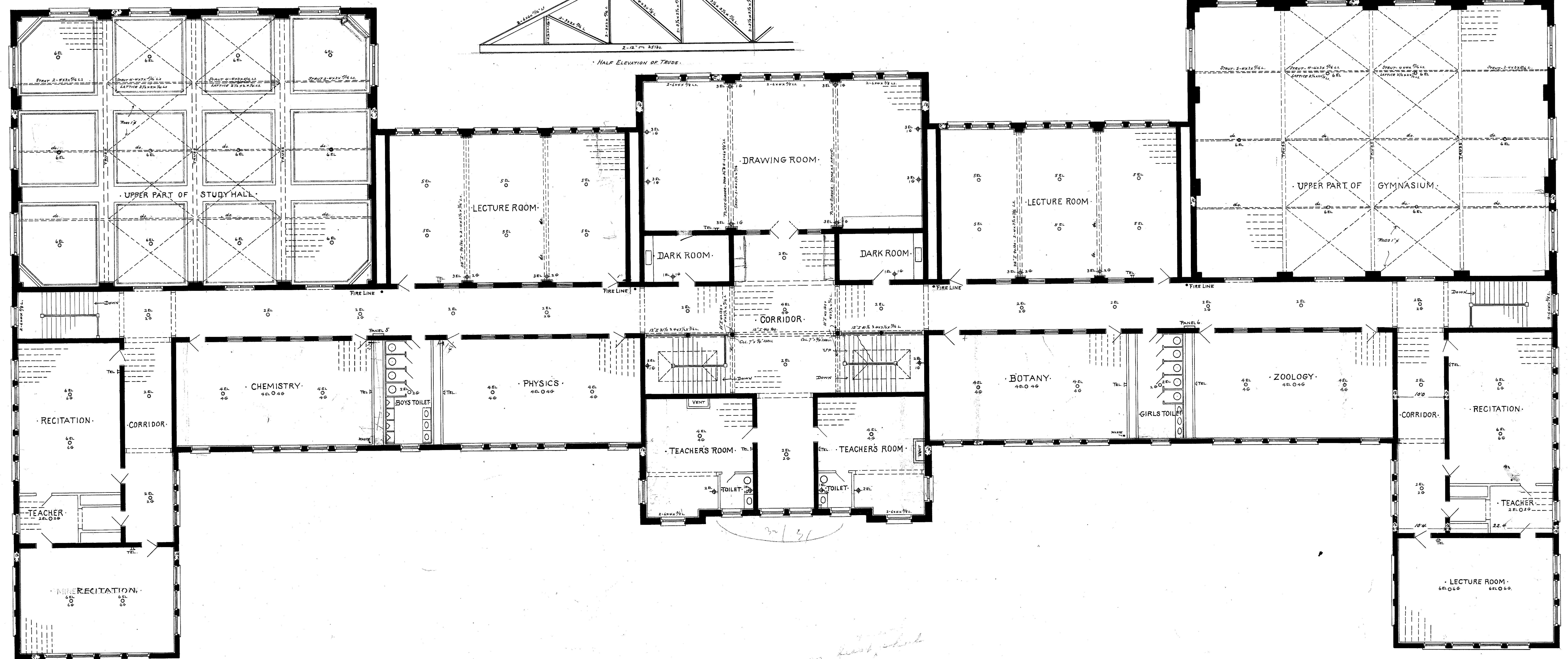
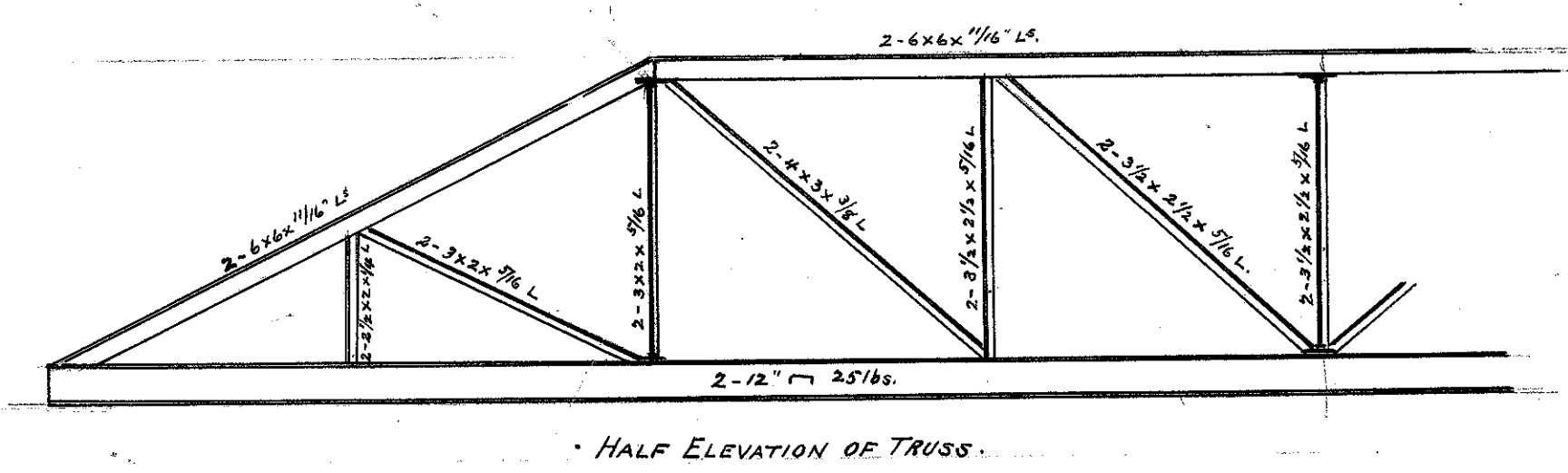
Follow this and additional works at: https://digitalcommons.montclair.edu/college_hall

Recommended Citation

The New Jersey State Normal School at Montclair and ., Department of Charities and Correction, Architects Office, "College Hall Architectural Drawing – Second Floor Plan" (1906). *College Hall*. 5.
https://digitalcommons.montclair.edu/college_hall/5

This Book is brought to you for free and open access by the Architectural Drawings at Montclair State University Digital Commons. It has been accepted for inclusion in College Hall by an authorized administrator of Montclair State University Digital Commons. For more information, please contact digitalcommons@montclair.edu.

44 89



SECOND FLOOR PLAN
Scale 1/4" = 1'-0"

DEPARTMENT OF CHARITIES AND CORRECTION
 BUILDING *State Normal School*
 LOCATION *Montclair Heights*
 SHEET NO. *5* DRAWN BY *George J. Trudis*
 DATE *Nov. 29, 1916* CHECKED BY *Robert J. Trudis*

ARCHITECTS OFFICE
 STATE HOUSE, TRENTON, N. J.

5