

11-20-1906

## College Hall Architectural Drawing – Rear Elevation

The New Jersey State Normal School at Montclair

Department of Charities and Correction, Architects Office .

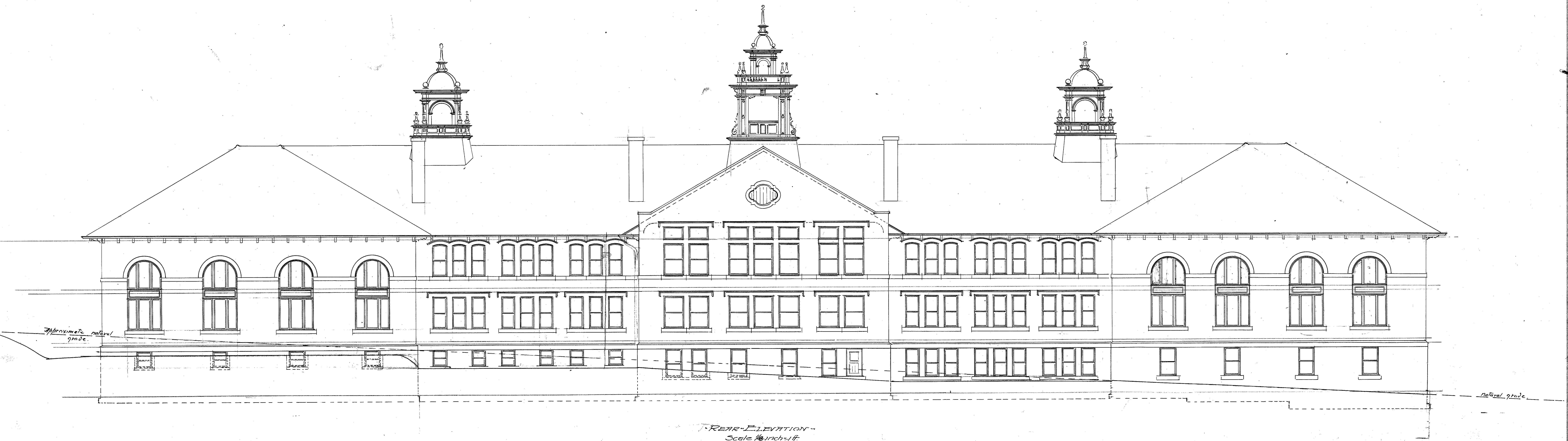
Follow this and additional works at: [https://digitalcommons.montclair.edu/college\\_hall](https://digitalcommons.montclair.edu/college_hall)

---

### Recommended Citation

The New Jersey State Normal School at Montclair and ., Department of Charities and Correction, Architects Office, "College Hall Architectural Drawing – Rear Elevation" (1906). *College Hall*. 2.  
[https://digitalcommons.montclair.edu/college\\_hall/2](https://digitalcommons.montclair.edu/college_hall/2)

This Book is brought to you for free and open access by the Architectural Drawings at Montclair State University Digital Commons. It has been accepted for inclusion in College Hall by an authorized administrator of Montclair State University Digital Commons. For more information, please contact [digitalcommons@montclair.edu](mailto:digitalcommons@montclair.edu).



REAR ELEVATION  
Scale 1/4 inch = 1 ft.

*Handwritten signature*

DEPARTMENT OF CHARITIES AND CORRECTION  
BUILDING: *State Normal School*  
LOCATION: *Montclair, N. J.*  
SHEET NO. *7* DRAWN BY: *R. W. S.*  
DATE: *Nov. 29, 1908* CHECKED BY: \_\_\_\_\_  
ARCHITECTS OFFICE:  
STATE HOUSE, TRENTON, N. J.

U

#