



Illinois Mathematics and Science Academy

**Board of Trustees  
Presents**



**Seventh Annual  
Alumni Awards Ceremony  
and  
Alumni Volunteers Recognition Dinner**

Friday, July 19, 2013  
6:30 – 8:30 pm  
Hilton Lisle-Naperville



## **PROGRAM**

## **WELCOME**

## **RECOGNITION OF ALUMNI VOLUNTEERS**

Ms. Catherine C. Veal, President  
Illinois Mathematics and Science Academy

## **DINNER**

## **BOARD OF TRUSTEES**

## **ALUMNI AWARD PRESENTATIONS**

### **ALUMNI TRAILBLAZER AWARD**

#### **B. Scott Gaudi, Ph.D. '91**

Presented by Dr. Erin Roche '89  
Second Vice-Chair, IMSA Board of Trustees

### **ALUMNI DISTINGUISHED LEADERSHIP AWARD**

#### **Gretchen E. Green M.D., M.M.S. '92**

Presented by Ms. Kathy He  
IMSA Board of Trustees

#### **Kathleen Plinske, Ed.D. '97**

Presented by Ms. Leslie N. Juby  
IMSA Board of Trustees

### **ALUMNI TITAN AWARD**

#### **Dwan LaMar Prude '97**

Presented by Dr. Glenn W. "Max" McGee  
Past Member, IMSA Board of Trustees

Thank you for joining IMSA and the Board of Trustees in this celebration  
and recognition of outstanding alumni accomplishments and support.

# IMSA Board of Trustees

## OFFICERS

### Chair

Sheila MB Griffin  
*Executive Vice President*  
*Griffin Holdings, Inc.*

### First Vice Chair

Dr. Paula Olszewski-Kubilius  
*Director, Center for Talent Development*  
*Northwestern University*

### Second Vice Chair

Dr. Erin W. Roche '89  
*Principal*  
*Prescott Magnet Cluster School*

### Secretary Pro Tem (Non-Voting)

Britta McKenna  
*Illinois Mathematics and Science Academy*

### Treasurer (Non-Voting)

Patrick Furlong  
*Vice President for Business and Finance/*  
*CFO*  
*Illinois Mathematics and Science Academy*

## EX-OFFICIO MEMBERS (Non-Voting)

Dr. Harry Berman  
*Executive Director*  
*Illinois Board of Higher Education*

Dr. Christopher Koch  
*State Superintendent*  
*Illinois State Board of Education*

Dr. Geoffrey S. Obrzut  
*President and Chief Executive Officer*  
*Illinois Community College Board*

Dr. James Rydland  
*Superintendent of Schools*  
*School District 129 West Aurora*

## TRUSTEES

Dr. Jerome "Jay" Budzik '95  
*Chief Technology Officer*  
*Perfect Market, Inc.*

Kathy He  
*Chief Executive Officer*  
*Vivregen LLC*

Dr. Steven T. Isoye  
*Superintendent, Oak Park and River Forest*  
*High School District 200*

Leslie N. Juby  
*Substitute Teacher*  
*Batavia, IL Public Schools*

Dr. Mary Kalantzis  
*Dean of College of Education and Professor of*  
*Curriculum and Instruction, University of*  
*Illinois at Urbana-Champaign*

John H. "Jack" McEachern, Jr.  
*President and Chief Executive Officer*  
*(Retired)*  
*Wayne Circuits, Inc.*

Dr. Luis Núñez  
*Consultant for BioTarget and*  
*Adjunct Professor of Chemistry, University*  
*of Alabama and University of Puerto Rico*  
*Mayaguez*

Dr. Marsha R. Rosner  
*Charles B. Huggins Professor and Chair*  
*Ben May Department for Cancer Research*  
*The University of Chicago*

### IMSA PRESIDENT

Catherine C. Veal

# IMSA Fund for Advancement of Education Board of Directors

## OFFICERS

### President

John Hoesley '89  
Managing Director  
Silicon Valley Bank

### Vice President

Pamela Blackwell  
CEO, Blackwell Management Solutions  
Vice-President, Blackwell Global Consulting

### Treasurer

Michael Suh '97  
Portfolio Manager  
University of Chicago Office of Investments

### Secretary (Non-Voting)

Paul Milano  
Executive Director of Development  
Illinois Mathematics and Science Academy

## DIRECTORS

Kapil Chaudhary  
Managing Director  
I2A Fund

Scott Crawford  
Vice President Corporate Development  
Rexam PLC

Ross Hemphill, Ph.D.  
Vice President, Regulatory Policy and  
Strategy  
ComEd

Vasu Kulkarni, Ph.D., M.B.A.  
Director of Marketing and Business  
Development, BP Americas Inc.

Stephanie Pace Marshall, Ph.D.  
Founding President and President Emerita  
Illinois Mathematics and Science Academy

Glenn W. "Max" McGee, Ph.D.  
Princeton International School of  
Mathematics and Science

Dan Mueth, Ph.D. '90  
Program Director  
Haemonetics Corporation

Joseph Nolan  
Chief Commercial Officer  
Lundbeck, Inc.

Jacob Plummer '96  
Vice President, Business Development  
Allscripts

Glenn Rippie, J.D.  
Partner & Chief Financial Officer  
Rooney Rippie & Ratnaswamy LLP

## EX-OFFICIO DIRECTORS

JuliAnn Geldner, J.D.  
IMSA Parent Association Council President  
Legal Counsel/Practice Administrator  
The Geldner Center

Melissa Comenduley '90  
IMSA Alumni Association Treasurer  
Broadway Technology, LLC

The IMSA Fund for Advancement of Education is a 501 not-for-profit corporation that accepts and distributes gifts and grants from the private sector to support IMSA's mission and work.

## Board of Trustees Alumni Awards

Established in 2006, the IMSA Board of Trustees Alumni Awards are the highest honors bestowed to alumni in recognition of their accomplishments and contributions to their field of endeavor, to IMSA, and to the citizens of Illinois, our nation and the world.

### Alumni Trailblazer Award

The Alumni Trailblazer Award is bestowed when merited and honors alumni who personify IMSA's philosophy statement that there will be alumni who "create new intellectual worlds, cure a dreaded human ailment or in some other way significantly influence life on our planet." The outstanding achievements of these honorees will have earned national or international prominence for a groundbreaking or sweeping initiative that has redefined and improved the way significant numbers of citizens live, learn or work.

### Alumni Distinguished Leadership Award

The Alumni Distinguished Leadership Award, an annual award, goes to alumni who have made distinguished achievements or leadership contributions in their professional fields of endeavor consistent with IMSA's mission. The awardees also may be recognized for significant civic or community contributions or for extraordinary courage and selflessness under challenging circumstances.

### Alumni Titan Award

The Alumni Titan Award, an annual award, honors alumni, who through outstanding service to IMSA, advance the institution's mission and work. The honorees are enthusiastic and energetic IMSA champions who dedicate significant time, talent and/or treasure to endeavors that help the Academy fulfill its role in developing talent and leadership in mathematics, science and technology for our state, nation and world.

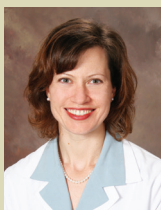


## Alumni Trailblazer Award

### B. Scott Gaudi, Ph.D. '91

Dr. B. Scott Gaudi is an internationally acclaimed astronomer who has been involved with the discovery of nearly two dozen extrasolar planets. In 2008, Dr. Gaudi received worldwide media attention for leading a team of 69 international astronomers in the discovery of a “scaled-down” Solar System. This discovery, published in the journal *Science*, implies that Solar Systems similar to ours might be common throughout the Galaxy. Dr. Gaudi is an associate professor in the Department of Astronomy at Ohio State University. He was awarded the Helen B. Warner Prize for “significant contribution to observational or theoretical astronomy” by the American Astronomical Society and was named one of the “10 Rising Stars of Astronomy” by Astronomy Magazine. In 2011, Dr. Gaudi received the Presidential Early Career Award for Scientists and Engineers (PECASE), the highest honor given by the U.S. Government for science and engineering professionals in their early research careers. He also earned a National Science Foundation Early Career Development Grant in 2011, a highly-coveted award intended to propel outstanding young scientists by supporting academic research and outreach endeavors.

Dr. Gaudi has been an advocate of IMSA, providing media interviews and serving in a strategic advisory capacity. He credits his IMSA experience for giving him the “conviction” to reach for the stars, and he returned to Illinois in 2009 to share his love of science and the joys of discovery during two lectures at IMSA and the Adler Planetarium and Astronomy Museum in 2009. Dr. Gaudi was a recipient of the IMSA Alumni Distinguished Leadership Award in 2007. Dr. Gaudi has a B.S. in astrophysics from Michigan State University, and a M.S. and Ph.D. in astronomy from Ohio State University.



## Alumni Distinguished Leadership Award

### Gretchen E. Green M.D., M.M.S '92

Dr. Gretchen E. Green is a physician leader who brings a combined focus on science and society to benefit her patients, fellow physicians, and the US population at large through her role as vice chair of the National Women’s History Museum Board of Directors. Currently an attending radiologist at Greensboro Radiology in North Carolina, Dr. Green has been actively involved in advocacy for women physicians and patients through research since graduating from IMSA. Dr. Green advocates for women undergoing breast imaging and obstetrical ultrasound, using her expertise as a radiologist and her background on the societal impact of imaging technology. An active member of her community, she promotes breast cancer education and frequently gives talks to the public on breast cancer. Through her work with the American Medical Association (AMA), she achieved a modification to the existing AMA policy to help cover mammography reimbursement for breast cancer patients.

Dr. Green’s current efforts are focused on educating physicians and patients on the technical and societal issues of imaging technology and to serve as a resource for companies looking to integrate the history of medicine into future development decisions. She has lectured nationally on women’s imaging topics as well as the history of women in medicine, and has co-authored two acclaimed medical textbooks on breast imaging with colleagues at Brigham and Women’s Hospital, Harvard Medical School. Dr. Green considers her time at IMSA to be the foundation on which all her future accomplishments have been built. Dr. Green has a Sc.B in neuroscience, M.M.S. in the history of medicine and pharmacology and an M.D. from Brown University.



## Alumni Distinguished Leadership Award Kathleen Plinske, Ed.D. '97

Dr. Kathleen Plinske is a distinguished educational leader with a passion for providing access to higher education to traditionally disadvantaged students. At a young age of 32, Dr. Plinske serves as President of Valencia College's Osceola and Lake Nona Campuses in Kissimmee and Orlando, Florida. Dr. Plinske is responsible for all academic, administrative and fiscal leadership of the campuses, and was responsible for overseeing the development of a new \$45 million, 150,000 square foot building at the Osceola Campus. Recently named as the top community college in the nation by the Aspen Institute, the Osceola Campus serves 12,000 students per term, about 45% of whom are Hispanic. Dr. Plinske uses her fluency in Spanish to communicate with students and their families. Prior to her work at Valencia, Dr. Plinske spent several years working at McHenry County College in Illinois. Her role began with working with faculty interested in developing online classes. From there, Dr. Plinske's extraordinary talents and professional commitment were quickly noticed, and she was promoted into several roles. In 2009, she was selected to serve as the Interim President of McHenry County College and was named one of McHenry County's "Top 10 Under 40."

Dr. Plinske is vocal about her gratitude for the tremendous gift of her experiences at IMSA that were provided to her by the people of Illinois, and about the responsibility she feels to give back to her community. An enthusiastic member of her community, she serves as the President-Elect of the Rotary Club of Lake Nona in Orlando, and is an active member of several community organizations. She has been recognized for her leadership and accomplishments with several awards including being named the 2012 Outstanding Young Alumnus by Indiana University and "Woman of the Year" by the Orlando Business Journal in their 40 Under 40 competition. A first-generation college graduate, Dr. Plinske has a B.A. in Spanish and physics from Indiana University, an M.A. in Spanish from Roosevelt University, an M.B.A. from the University of Florida, and an Ed.D. from Pepperdine University.



## Alumni Titan Award Dwan LaMar Prude '97

Dwan LaMar Prude has unselfishly, tirelessly and graciously shared his time, talents and Titan spirit with the IMSA community. From his strategic guidance to his mentorship of students, Prude's dedication and commitment advances IMSA's mission and work at every level. He has been a servant leader as he promotes IMSA, our PROMISE Programs, and the benefits of attending the Academy with great pride, passion and confidence. In 2012, Prude served as IMSA's Convocation Speaker, kicking off the school year with a rousing and heartfelt speech that left students inspired for the new school year. That summer, he dedicated time to driving students from the Metro East area to/from IMSA, allowing their participation in the SEAMS program. In 2011, he co-coordinated an alumni mentoring and tutoring program in the Metro East area for 9<sup>th</sup> graders interested in math, science and IMSA. He has also shared his "IMSA story" with students enrolled in IMSA's PROMISE and EXCEL programs, relating his experience to that of the students. Prude makes himself available to mentor students and lend a helping hand whenever needed. In addition, Prude regularly serves as an Admissions Review Committee member and also served IMSA in a three-day retreat held in 2009 to explore ideas for models to expand IMSA's programs per the strategic plan. His experience, knowledge and insights have been an invaluable asset to IMSA.

Prude is a gifted coach, speaker, professional trainer, and team builder. He is currently employed at the Boeing Company in St. Louis as a Procurement Financial Analyst for the F-18 Platform. He is a member of Toastmasters International and is also pursuing membership to the National Speakers Association (NSA). An active member of his community, Prude serves as the Sr. Pastor of the Bride of Christ Church of God in Christ in East St. Louis, IL. He is also an entrepreneur as the founder and CEO of the IllinoisTown Media International, LLC. Prude has a B.S. in Engineering Management – Industrial Engineering and an M.S. in Engineering Management – Quality Engineering from the Missouri University of Science and Technology (MS&T). He is currently pursuing his Doctorate of Biblical Theology from the Midwest College of Theology (MCT) with an expected graduation in Winter 2013.



# IMSA Board of Trustees

## Alumni Awards Past Recipients

### Alumni Trailblazer Award

**2008**

Steven S. Chen '96  
Russel E. Simmons '95

**2007**

Yu Pan '95  
Rob McCool '91  
Ramez Naam '90

### Alumni Distinguished Leadership Award

**2012**

Alex (Dietrich) Greene '97  
Sam Yagan '95  
Winjie Tang Miao '94

**2011**

Clara Shih '00  
Dr. Matthew Pritchard '93  
Dr. Frank Wood '92  
Dr. Ronjohn Paul '89

**2010**

Travis Schedler, Ph.D. '98  
Dan Frakes '89  
Lillian Kao, M.D. '89

**2009**

Dr. Rebecca Willett '96  
Dr. Thandeka K. Chapman '89

**2008**

Captain H. Kenyatta Ruffin '99  
Mia K. Markey, Ph.D. '94  
Sanza T. Kazadi, Ph.D. '90  
Scott Swanson '90

**2007**

Ben Chelf '96  
Noah A. Rosenberg, Ph.D. '93  
B. Scott Gaudi, Ph.D. '91  
Tuwanda Williamson, M.D. '91  
Terri L. Willard '89

### Alumni Titan Award

**2012**

Amy (Timm) Kinney '95

**2010**

Ray Stadt '93  
Mike McCool '91

**2009**

Pooja K. Agarwal '01  
Joshua A. Gerlick '99  
Sendhil Revuluri '90

**2008**

Neal K. Groothuis '97  
Paul J. Strasma '94

**2007**

Andrea (Ande) L. Croll '97  
Douglas A. Pratt '97  
Michael H. Brody '96  
John B. Hoesley '89

# Recognition of Alumni Volunteers

During the 2012-2013 academic year, over 400 alumni from every class year generously shared their time and talents with IMSA. As program volunteers, these alumni helped with technology projects, recruited prospective students, served as mentors for current students, shared legislative contacts, and participated in media interviews and special events. They taught week-long Intersession courses, coordinated reunions and alumni gatherings, advised student clubs, worked with IMSA's Statewide Student Initiatives and more. These alumni also provided strategic counsel to the IMSA Board of Trustees, the IMSA Fund Board of Directors, administrative and program leaders, and Admissions Student Review Committee.

IMSA would like to recognize members of the IMSA Alumni Association (IAA) Cabinet for their leadership in alumni volunteer programs and dedicated work to fulfill the IAA's mission to "strengthen the bond shared by all IMSA alumni and the larger IMSA community through collaborative relationships, learning opportunities, stewardship, and mutually beneficial goals."

## IMSA Alumni Association Cabinet

Melvin Bacani '90  
Samuel Berger '07  
Angela Chen '93  
Kevin Colby '95

Melissa Comenduley '90  
Julie Dowling '99  
Bonnie Min Gier '89  
Dr. Cheryl Heinz '89

Eric Hultgren '08  
Matthew Isoda '02  
Amy (Timm) Kinney '95  
Nicholas Lilovich '04

Tiffany Morgan '00  
Amanda Murphyaoy '03  
Brian Sebby '96  
Winn Wasson '01

## Alumni Volunteers

Mivil Abraham '08  
Douglas Adams '99  
Dr. Pooja Agarwal '01  
Lisa Akintilo '11  
Yusuf Aktan '12  
Betsy Allen '06  
Dr. Angel Alvarez '98  
Jessica Anderson '01  
Vidya Anjur '12  
Christopher Aruffo '89  
Tricia Aung '04  
Dawna Bagherian '10  
Amishi Bajaj '10  
Brian Baker '05  
P.J. Balin-Watkins '98  
Marilyn Bekker '06  
Jennifer Bennett '10  
Rachel Benoit '92  
Allison Bergin '08  
Mitchell Bieniek '12  
Wendy Bindeman '12  
Derek Blanchette '03  
Marilyn Blasingame '08  
Joe Bonomo '91  
Wesley Bradley '11  
Dr. Jay Budzik '95  
Ray Buhr '05  
Caitlin Bunt '09  
Jordan Burdine '05  
Ernesto Cruz Caceres '97  
Luis Carbajal '09  
Matt Carter '07  
Jennifer Cash '90  
Sarah Cavaglia '06  
Reginald Champagne '02  
Alicia Chan '03  
Belinda Chang '01  
Robert Chang '89  
Ann Chen '93  
Irene Chen '10

Megan Chen '12  
Christina Cheng '12  
Jenny Cheng '06  
Stephanie Cheng '11  
Karen Chien '05  
Nina Chinosorn '96  
Lindsey Choi '08  
Henry Chong '92  
Francis Cocjin '12  
Emily Coleman '04  
Katia Colin '12  
Caitlyn Collett '12  
Rachel Cook '01  
Charlie Corrigan '99  
Eleanor Cory '12  
Joshua Cote '08  
Brittanie Crain '05  
Catherine Crawford '09  
Brian Cudiamat '96  
Megan Czajka '12  
Irene Czajkowski '99  
Raymond Dames '89  
Cynthia Dang '03  
Monica Daniels '12  
Shelby Daniel-Wayman '12  
Sophia Davenport '89  
Sharon DeCaro '03  
Jenny Deller '94  
Lucas Delort '09  
David Derry '10  
Dr. Daniel DeUgarte '90  
Dean Dieker '03  
Alex Dietrich-Greene '97  
Hilary Dietz '09  
Marty DiMarzio '95  
Diliana Dimitrova '11  
Kristen Dinardo '03  
Yuanxia Ding '00  
Marcelo Diop-Gonzalez '12

Quoc Do '90  
Michael Driscoll '07  
Alexander Drummond '09  
Johnny Duan '12  
Sena Dzakuma '08  
Eric Engelhard '96  
Eva Bach Engelhard '96  
Andrew Ericson '10  
Salvador Esparza '10  
Tiernan Evans '08  
Jenny Fang '09  
Natasha Fast '98  
Yan-Yang Feng '12  
Sharon Sundry Ferrell '89  
Roy Fisher '09  
Michelle Fitzpatrick '01  
Dan Frakes '89  
Sarah Frey '92  
Vanessa Gage '95  
Cristal Garcia '07  
Dhaval Garg '03  
Theresa Geiger '07  
Jill Gengler '89  
Benjamin Gertzfield '97  
Marissa Ghant '08  
Ricardo Gonzalez '09  
Lani Gordon '97  
Katrina Gossman '07  
Vidya Govind-Thomas '09  
Rhiana Gunn-Wright '07  
Brinda Gupta '12  
Saarthak Gupta '12  
Trevor Hahm '12  
Jing Han '06  
Mandy Hayes '07  
Lauraleigh Heffner '10  
Gabriella Heller '10  
Jacob Henry '12  
Ovi Hentea '06  
Tyce Herrman '08

Katrina Herrmann '01  
Mark Hoadley '03  
Dr. Andy Hocker '91  
Mark Hoemmen '98  
John Hoesley '89  
Chelsy Hopper '92  
Thomas Houlahan '05  
Pete Howes '12  
Dorcas Huang '12  
Aleata Hubbard '02  
Jessica Hunter '10  
Adnan Husain '98  
Aiva Ilevins '06  
Dr. Princess Imoukhuede '98  
Lara India '07  
August Jackson '93  
Shawon Jackson '11  
Ethan Jacobs '12  
John Jaeger '04  
Ankit Jain '08  
Shantanu Jain '12  
Brittany James '09  
Kumar Jawvaji '97  
Dr. Jane Jih '99  
Irene Jing '12  
Jeremy Johnson '08  
Tremylla Johnson '00  
David Jordan '07  
Benjamin Jorns '03  
Damie Juat '12  
Amanda Kabak '92  
Glen Kabumoto '95  
Arielle Kanters '05  
Aditya Karan '12  
Nilesh Kavthekar '12  
Dr. Sanza Kazadi '90  
Dr. Garry Kennebrew '04  
Ravi Kesari '07  
Emil Khabiboulline '12  
Micha Kilburn '95

Dr. Bryan Kim '98  
 Mimi Kim '04  
 Joshua Kinder '05  
 Clinton Kinkade '07  
 Tanya Kobyluk '91  
 Jonathan Koch '08  
 Hannah Koo '12  
 Jordan Koss '89  
 Jakob Kotas '05  
 Aleyka Kothamasu '12  
 Amanda Kotlyar '97  
 Rachel Kovac '05  
 Monica Kozbial '11  
 Alarmel Krishnaswamy '96  
 Melanie Kuehn '98  
 Benjamin Kuo '12  
 Opeyemi Kusoro '09  
 Sam Kwak '11  
 Eric Kwan '10  
 Noelle Kwan '07  
 Jasmine Kwasa '09  
 Kristen Lail '91  
 Sonia Lai '93  
 Dan Langan '02  
 Gregory Larnell '00  
 Vivian Lau '03  
 Christy Lee '92  
 Adam Leemans '09  
 Dr. Apinya Lertratanakul '93  
 Melanie Leung '06  
 Stephanie Leung '06  
 Samantha Levin '12  
 James Li '00  
 Xiaoyu Li '12  
 Thomas Lightfoot-Vidal '12  
 Santina Lin '10  
 Annie Liu '07  
 Ariel Liu '09  
 Jimmy Liu '09  
 Naomi Liu '11  
 Xuxuan Liu '09  
 David Lockhart '90  
 David Lorentzen '10  
 Zouyan Lu '02  
 Steven Lucy '02  
 Wei Luo '07  
 Justine Ly '11  
 Alex Ma '08  
 Rahul Maheshwari '12  
 Egle Malinauskaitė '12  
 Kate Malinowski '03  
 Jenna Maloka '05  
 Zack Maril '10  
 Stephanie Martinez '10  
 Susan Massey '01  
 Brandan Matthews '10  
 Rhyston Mays '12  
 Angela McByrd '08  
 Ian McInerney '11  
 Sarah Mcpike '07  
 Allyson Milenkovic '12  
 Hannah Miller '12  
 Sreeram Mittapalli '97  
 Jennifer Mo '02  
 Denise Mol '11  
 Christina Momchev '12  
 Maciej Mroczek '05  
 Dan Mueth '90  
 Kirti Munjeti '13  
 Alexander Muñoz '10  
 Elizabeth Murphy '10  
 Sulochana Mutha '08  
 Ramez Naam '90  
 Laura Napierkowski '12  
 Vishesh Narayan '00  
 Lina Nayak '03  
 Ilya Nepomnyashchiy '09  
 Cynthia Nguyen '03  
 Sammy Nguyen '09  
 Carly Nix '04  
 Jennifer Norton '92  
 Matt Norton '07  
 Anthony Nuval '98  
 Chibuzo Obasi '12  
 Melissa O'Brien '11  
 Paloma Ocola '12  
 Ranait O'Connor '09  
 Birce Onal '08  
 Carlo Ordonez '02  
 Jason Orloff '90  
 Amy Orsborn '07  
 Kristen Osenga '90  
 Meaghan Pachay '09  
 Kori Pacyniak '00  
 Brian Page '11  
 Scott Page '09  
 Stephen Paige '00  
 Annie Park '02  
 Jeff Pasqualucci '00  
 Lisa Patel '10  
 Mikin Patel '04  
 Ernestina Perez '09  
 Gregory Pergrossi '12  
 Zachary Pergrossi '12  
 Robert Petersen '94  
 Dr. Amy Peterson '04  
 Lisa Peterson '08  
 Scott Pfister '89  
 Capt. Pearl Phaovisaid '99  
 Ravi Pilla '09  
 Martina Pillay '09  
 Anne Pipathsouk '09  
 Alexandra Plattos '07  
 Kathleen Plinske '97  
 Jacob Plummer '96  
 Dr. Arthur Pope '01  
 Amanda Potocky '93  
 Kristen Pratt '04  
 Dwan Prude '97  
 Aparna Puppala '99  
 Gina Qin '12  
 Faith Quist '11  
 Amanda Raddatz '01  
 Matthew Rasmussen '12  
 Abhinav Reddy '12  
 Morgan Rehberg '11  
 Anna Remis '97  
 Jorge Reyes '99  
 Meredith Rhein '08  
 Ashley Ro '11  
 Kaleigh Roberts '06  
 Clement Robinson '06  
 Douglas Robinson '02  
 Dr. Erin Roche '89  
 Jason Roch '08  
 Jenny Roderick '09  
 Aimee Rodriguez '99  
 Mariela Rodriguez '12  
 Madison Rogers '12  
 Rae Rokosh '09  
 Michelle Rudolph '10  
 Capt. Kenyatta Ruffin '99  
 Ellie Ryan '08  
 Satoe Sakuma '11  
 Sarah Salameh '12  
 Sid Sapru '10  
 Lindsey Schobert '09  
 Polina Segalova '01  
 Rital Shah '10  
 Samir Shah '11  
 Rebecca Shane '02  
 Kimberly Sherwin '11  
 Bo Shi '08  
 Kevin Shi '11  
 Rae Shih '06  
 Alan Shramuk '12  
 Elisa Smith '96  
 Amy Sohl '89  
 Dr. Sarah Song '96  
 Stephanie Song '06  
 Amelia Sorensen (Adams) '98  
 Dr. Lynn Sosa-Bergeron '94  
 Leigh Spencer '98  
 Ray Stadt '93  
 Jessica Stephenson '97  
 Sarah Stevens '09  
 Carrie Steyer '87  
 Danielle Strickland '10  
 Katie Stromdahl '09  
 Molly Sturm '03  
 Lucas Sturnfield '03  
 Michael Suh '97  
 Michelle Suh '12  
 Stephanie Sullivan '03  
 Daniel Sun '03  
 Alex Surasky-Ysasi '03  
 Hannah Swerbenski '13  
 Dr. Meghan Tadel '95  
 Heather Taff '04  
 Ana Tellez '02  
 Cristina Thomas '07  
 Lacey Thomas '08  
 Amber Thompson '03  
 Courtney Thompson '03  
 Aaditya Tolappa '12  
 Connor Tomasko '11  
 Amanda Townsend '04  
 Melanie (Kotys) Traugber '95  
 Joseph Turek '90  
 Milan Udawatta '09  
 Thiran Udawatta '08  
 Thiran Udawatta '05  
 Matt Untermer '93  
 David Vakil '92  
 Sydney Valero '12  
 Karthik Vantakala '09  
 Seema Verma '04  
 Veena Villivalam '98  
 David Wagner '93  
 Kelly Wallin '11  
 Christopher Wallis '11  
 Tabbey Walquist '09  
 Lyn Miller Wancket '99  
 Dr. Claire Wang '93  
 Connie Wang '12  
 John Wang '10  
 Kevin Wang '12  
 Jessica Ward '02  
 Shannon Watson '92  
 Charles Whittaker '07  
 Jered Wierzbicki '02  
 Akiilah Wilkes '95  
 Jordan Williams '12  
 Dr. Tuwanda Williamson '91  
 Jonathan Wilson '96  
 Keith Winstein '99  
 Michael Wong '11  
 Mark Wrzyszczyński '92  
 Megan Wu '11  
 Lisa Xia '03  
 Diana Xu '12  
 Mark Xue '09  
 Sam Yagan '95  
 Michael Yamakawa '10  
 Kevin Yang '02  
 Karthik Yarlagadda '12  
 Fei Ye '09  
 Kelly Yom '12  
 Vanya Yorgova '12  
 Stanley Yuan '12  
 Elizabeth Zaretsky '10  
 Jody Zarrell '98  
 Sharon Zeng '08  
 Joanna Zhang '05  
 Alice Zhao '04  
 Amy Zhou '10  
 Abigail Zillner '06  
 Elaina Zinti '12

While we carefully prepare this list of volunteers, we recognize that errors may have occurred.  
 Please accept our apology if your name is not properly represented and contact IMSA's Office of  
 Development at (630) 907-5040 so that our records can be corrected.

Thank you!

The internationally recognized Illinois Mathematics and Science Academy® (IMSA) develops creative, ethical leaders in science, technology, engineering and mathematics. As a teaching and learning laboratory created by the State of Illinois, IMSA enrolls academically talented Illinois students (grades 10-12) in its advanced, residential college preparatory program, and it serves thousands of educators and students in Illinois and beyond through innovative instructional programs that foster imagination and inquiry. IMSA also advances education through research, groundbreaking ventures and strategic partnerships. ([www.imsa.edu](http://www.imsa.edu))

Visit us at  
[www.imsa.edu](http://www.imsa.edu)



Illinois Mathematics and Science Academy®

1500 Sullivan Road

Aurora, IL 60506-1000

630-907-5040

[www.imsa.edu](http://www.imsa.edu)

