

## Panel 10. Paper 10.2: Contradictions Between Local Values and Top-down Conservation Priorities: Taşkale, Turkey

EMINE CIGDEM ASRAV  
*Politecnico di Torino, emineasrav@gmail.com*

AYSE GULIZ BILGIN ALTINOZ  
*Middle East Technical University*

Follow this and additional works at: [https://scholarworks.umass.edu/icomos\\_iscccl](https://scholarworks.umass.edu/icomos_iscccl)



Part of the [Architectural History and Criticism Commons](#), [Historic Preservation and Conservation Commons](#), and the [Urban, Community and Regional Planning Commons](#)

---

ASRAV, EMINE CIGDEM and BILGIN ALTINOZ, AYSE GULIZ, "Panel 10. Paper 10.2: Contradictions Between Local Values and Top-down Conservation Priorities: Taşkale, Turkey" (2019). *Rural Heritage - Landscapes and Beyond / PATRIMOINE RURAL: Paysages et au-delà*. 44.  
[https://scholarworks.umass.edu/icomos\\_iscccl/2019/papers/44](https://scholarworks.umass.edu/icomos_iscccl/2019/papers/44)

This Paper in a panel / paper dans un panneau is brought to you for free and open access by ScholarWorks@UMass Amherst. It has been accepted for inclusion in Rural Heritage - Landscapes and Beyond / PATRIMOINE RURAL: Paysages et au-delà by an authorized administrator of ScholarWorks@UMass Amherst. For more information, please contact [scholarworks@library.umass.edu](mailto:scholarworks@library.umass.edu).

# Contradictions Between Local Values And Top-down Conservation Priorities: Taşkale, Turkey

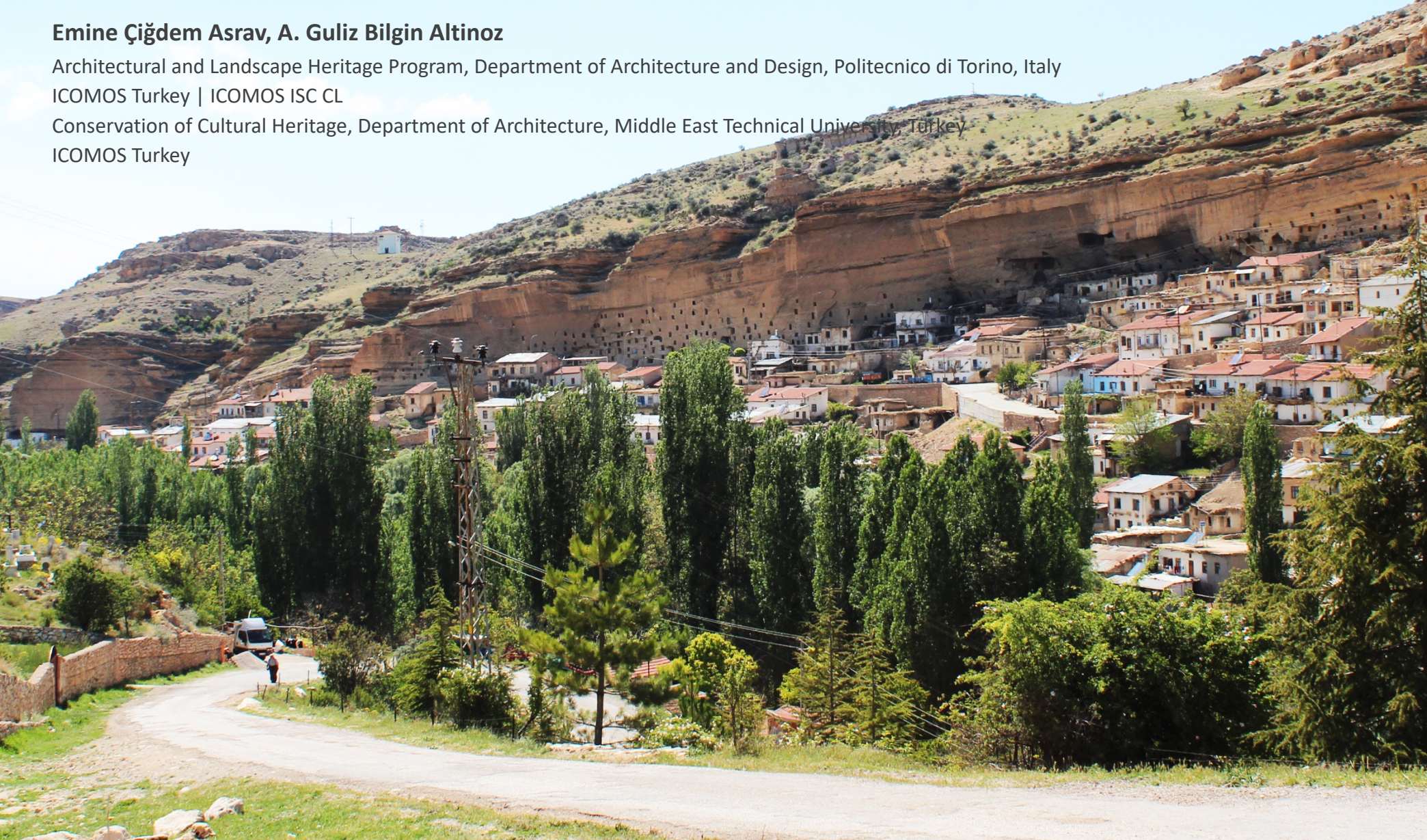
**Emine Çiğdem Asrav, A. Guliz Bilgin Altinoz**

Architectural and Landscape Heritage Program, Department of Architecture and Design, Politecnico di Torino, Italy

ICOMOS Turkey | ICOMOS ISC CL

Conservation of Cultural Heritage, Department of Architecture, Middle East Technical University, Turkey

ICOMOS Turkey



## settlement characteristics

### -in the nature

rock-carved spaces: initial settlements

### -attached to the nature

rock-cut spaces closed by wall: granaries, rock-cut houses

### -on the nature

row and terrace houses



## settlement characteristics & daily use

The socio-cultural and economic life activities are totally dependent on nature and living spaces. For this, there is active use of spaces in the village and in its historic landscape.



## socio-economic characteristics

- agriculture
- animal husbandry
- beekeeping
- carpet weaving

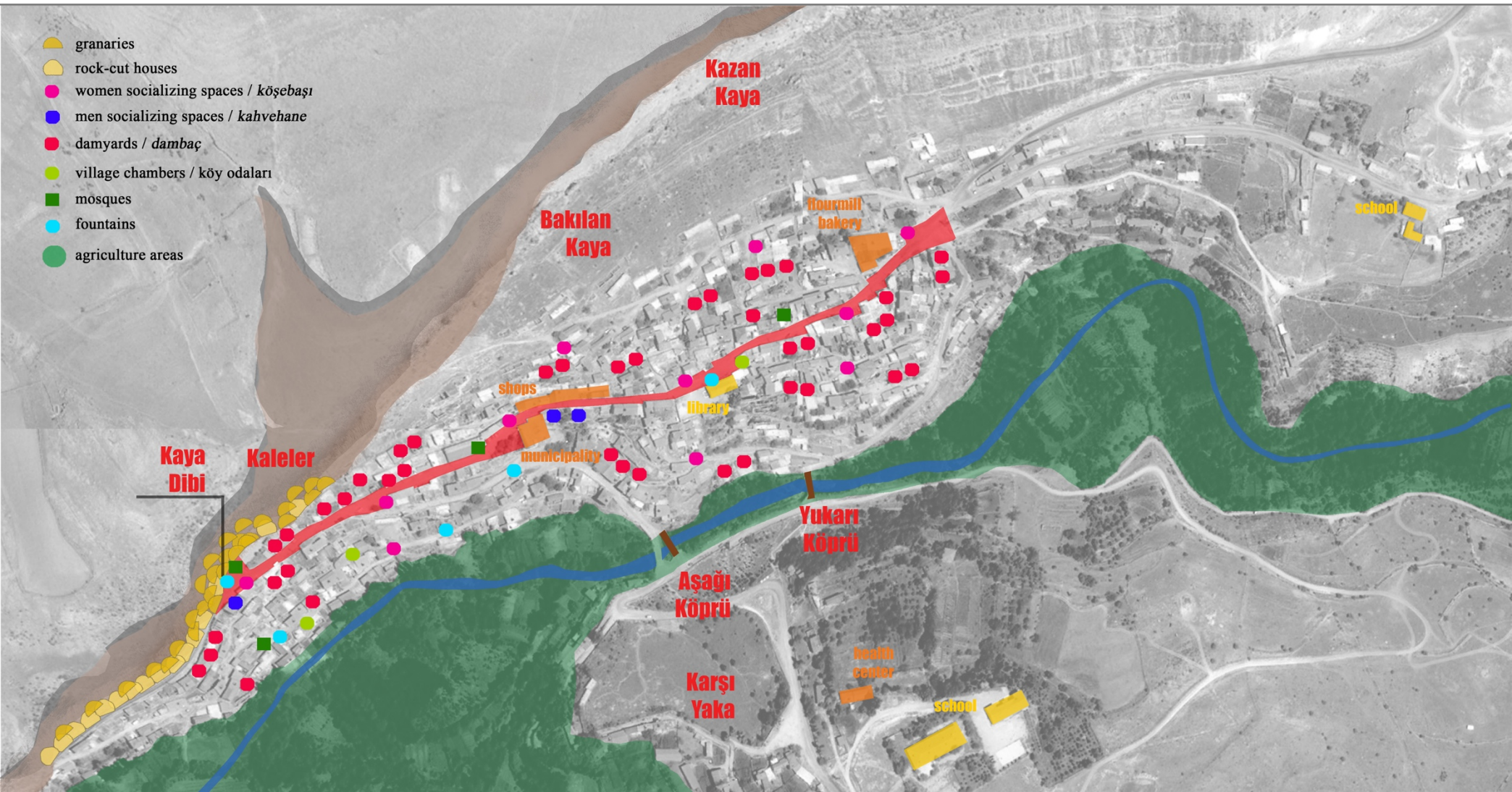


## overall values of Taşkale Village

natural and man-made setting

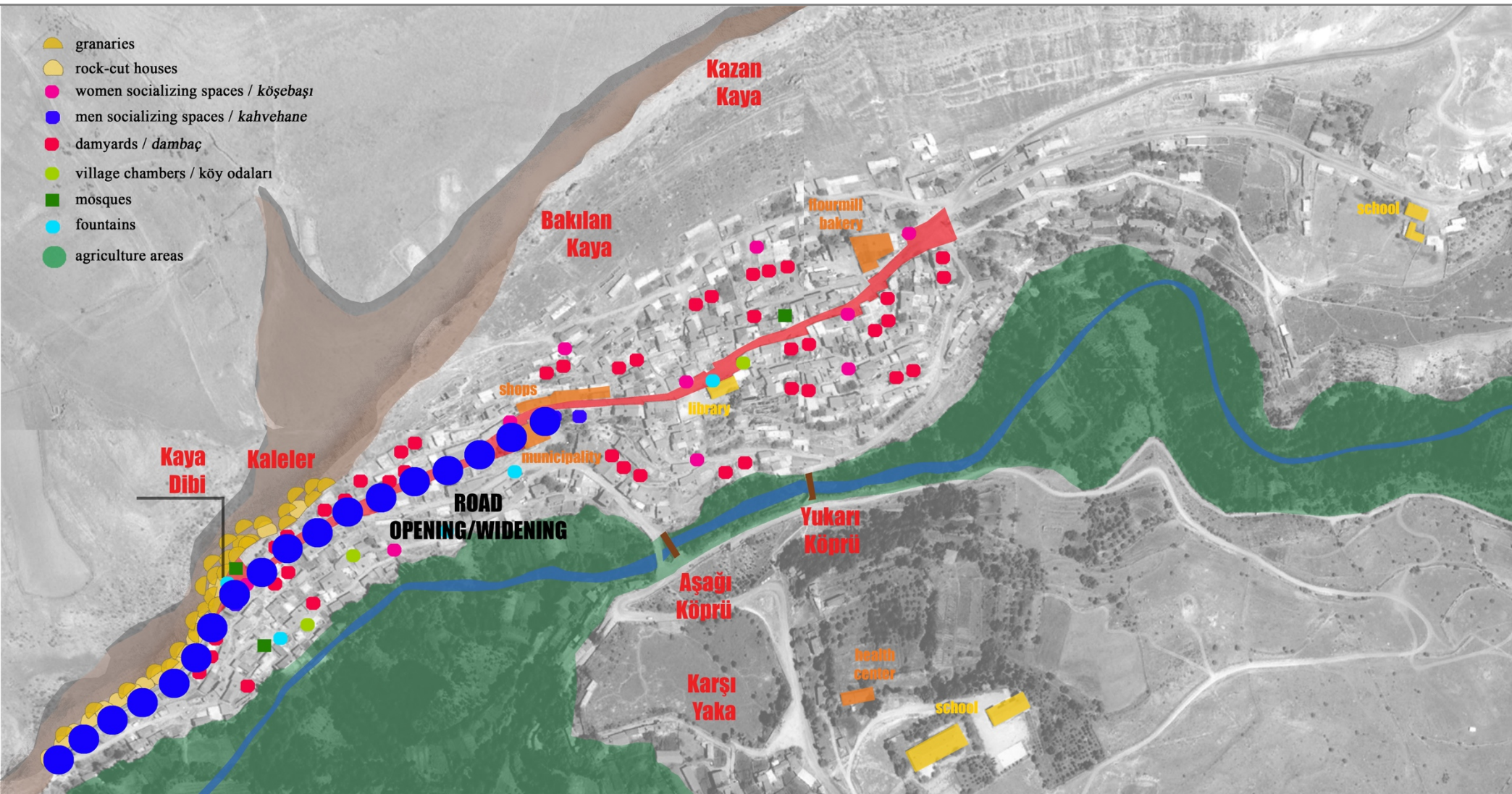
active use of whole cultural landscape in socio-cultural and economic activities

intangible relations with living environment through memories, symbol areas, place attachments



## state-driven & expert-based top-down decisions disregarding local values

state 'touches' as top-down decisions for development:  
1983 Road opening & widening



## state-driven & expert-based top-down decisions disregarding local values

state 'touches' as top-down decisions for conservation:

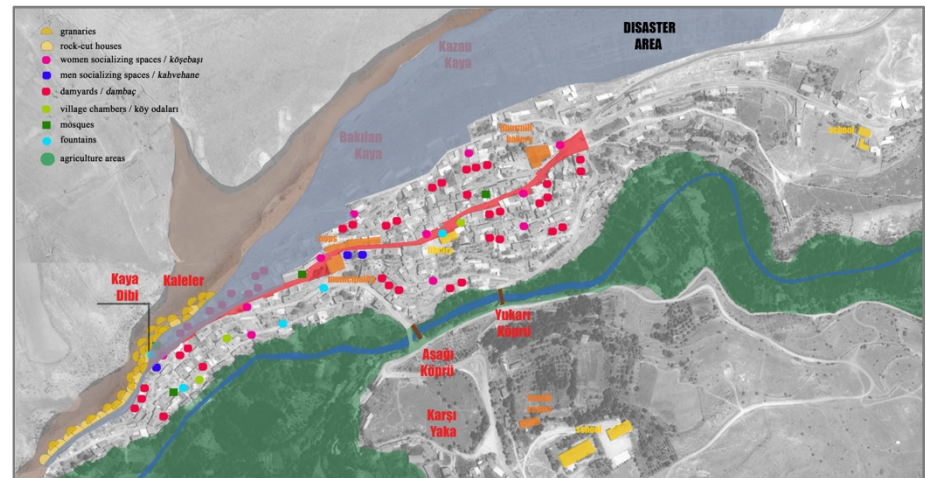
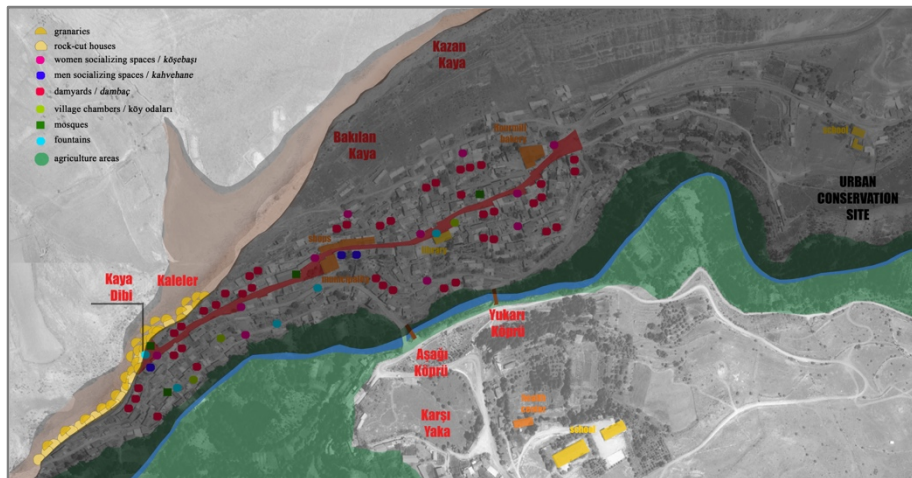
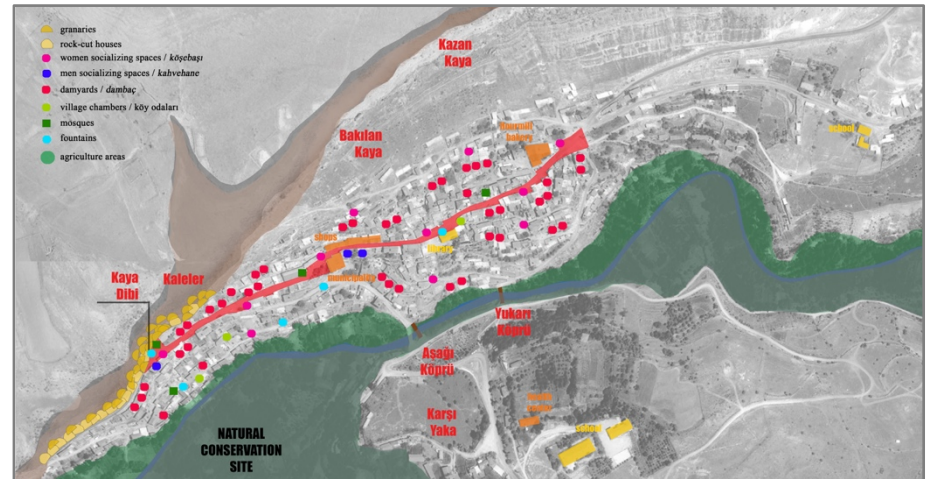
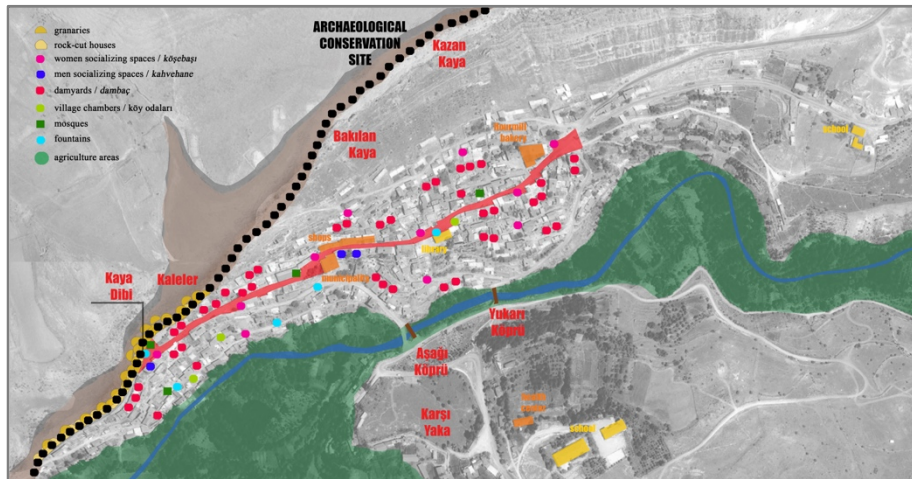
1986 1st degree Archaeological Conservation Site

1992 Urban Conservation Site

1992 1st degree Natural Conservation Site

state 'touches' as top-down decisions for protection:

1992 Disaster Area Declaration







## Contradictions Between Local Values and Top-Down Decisions

prevention on daily use of places

set of rules for conservation activities contradicting with the local lifecycle

abandonment

degraded physical environment

tourism development as the only future vision



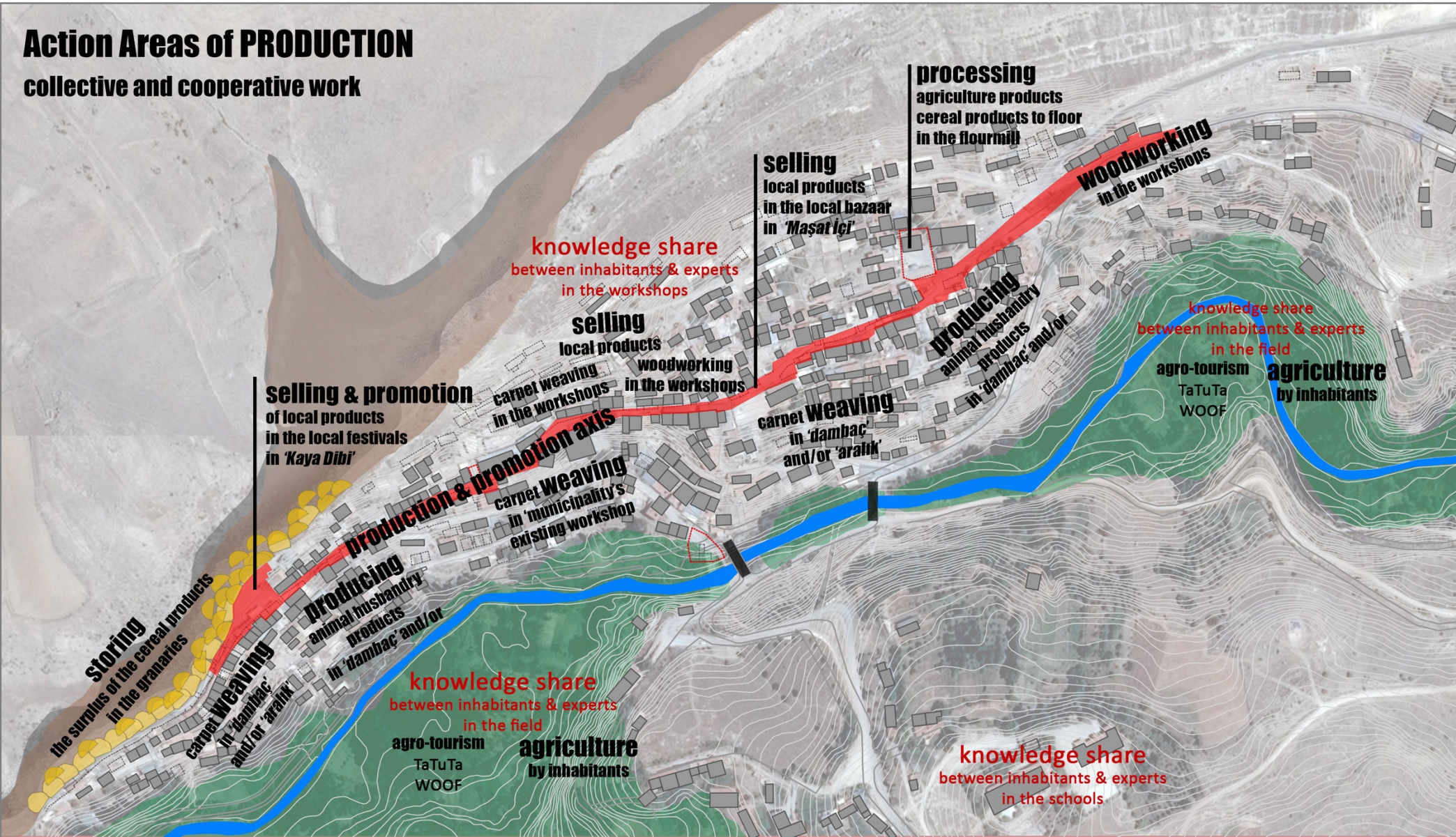


# Policies & Strategies for Community-Driven Conservation and Empowerment

## 1 Action Areas of Production Model

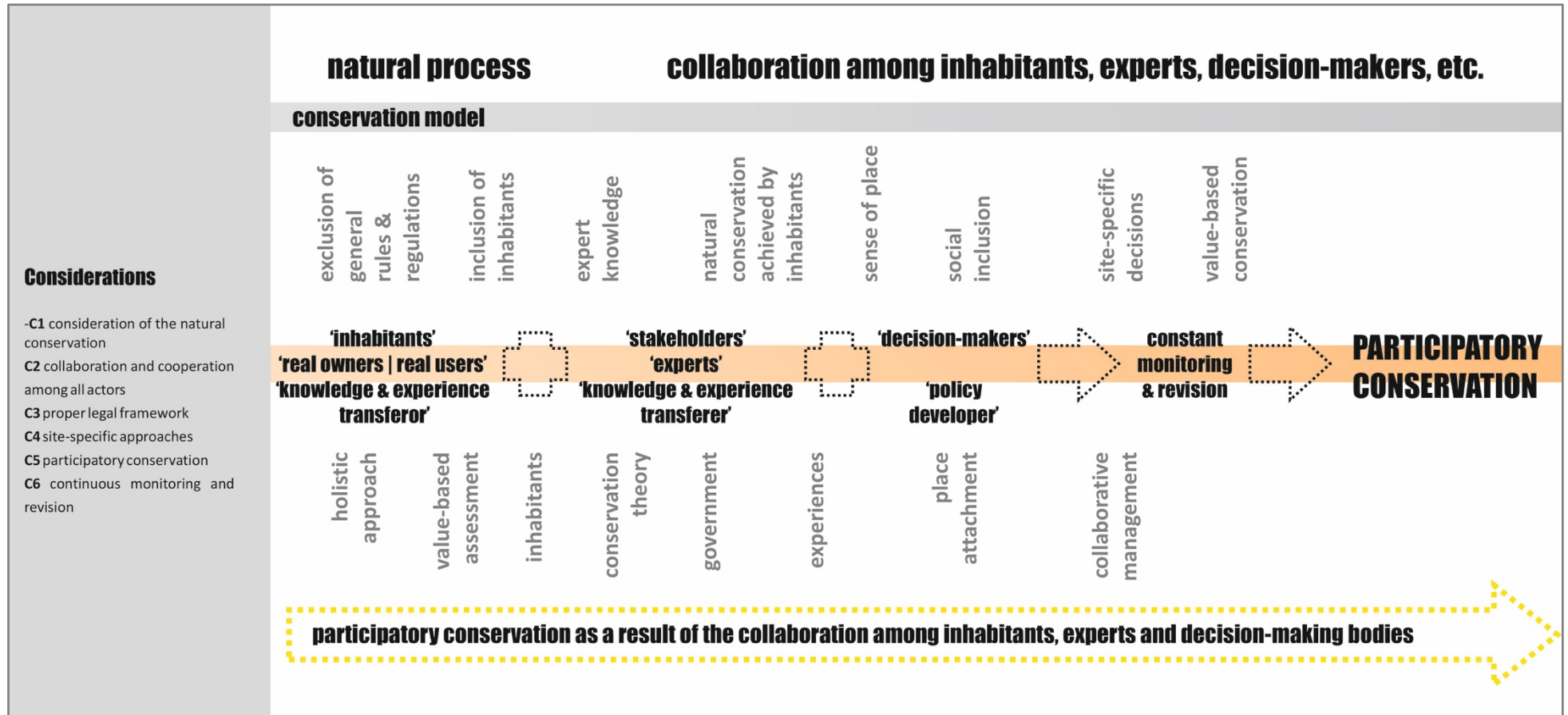
### Action Areas of PRODUCTION

collective and cooperative work



# Policies & Strategies for Community-Driven Conservation and Empowerment

## 2 Conservation Model

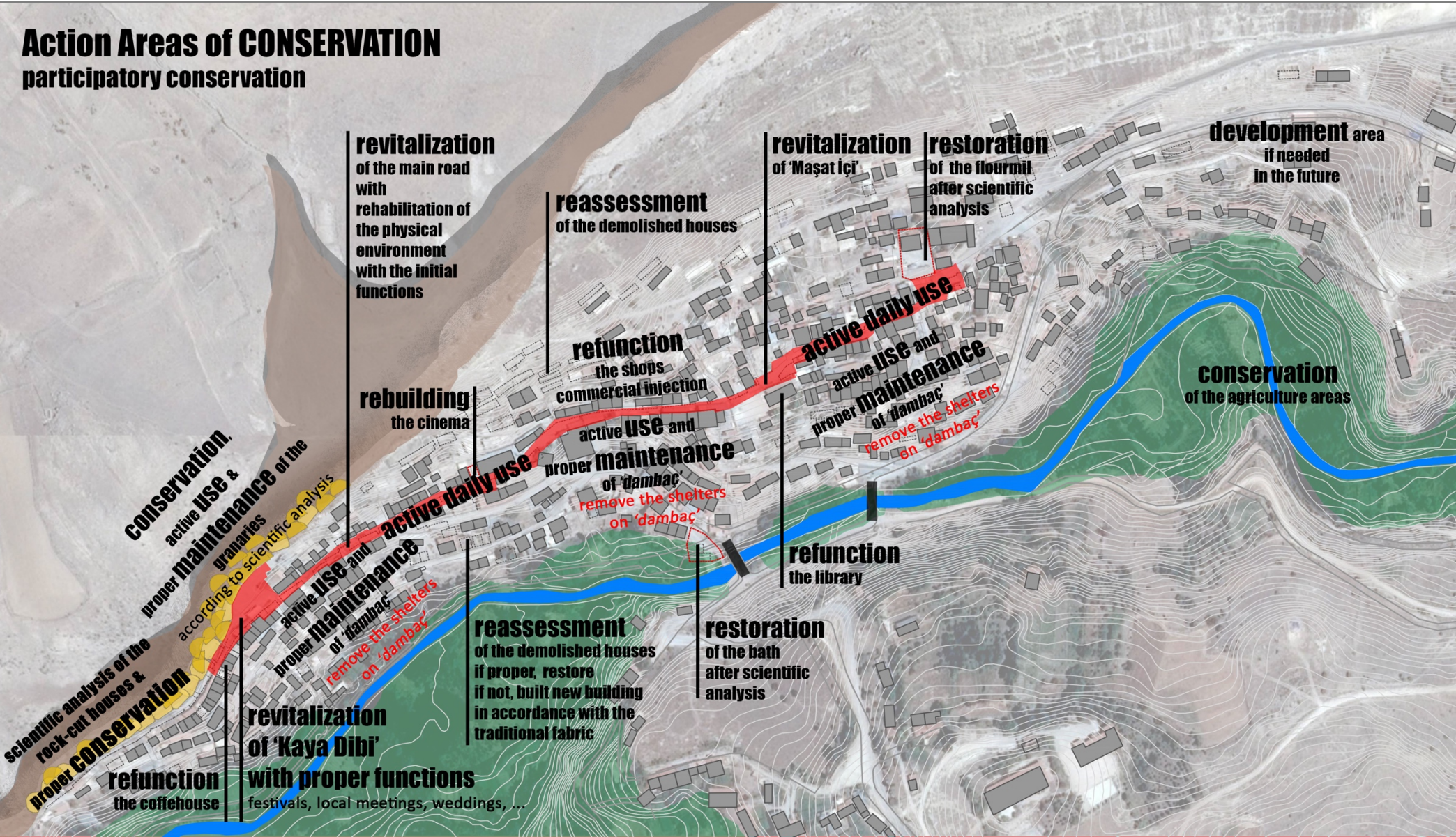


**Considerations**

- C1 consideration of the natural conservation
- C2 collaboration and cooperation among all actors
- C3 proper legal framework
- C4 site-specific approaches
- C5 participatory conservation
- C6 continuous monitoring and revision

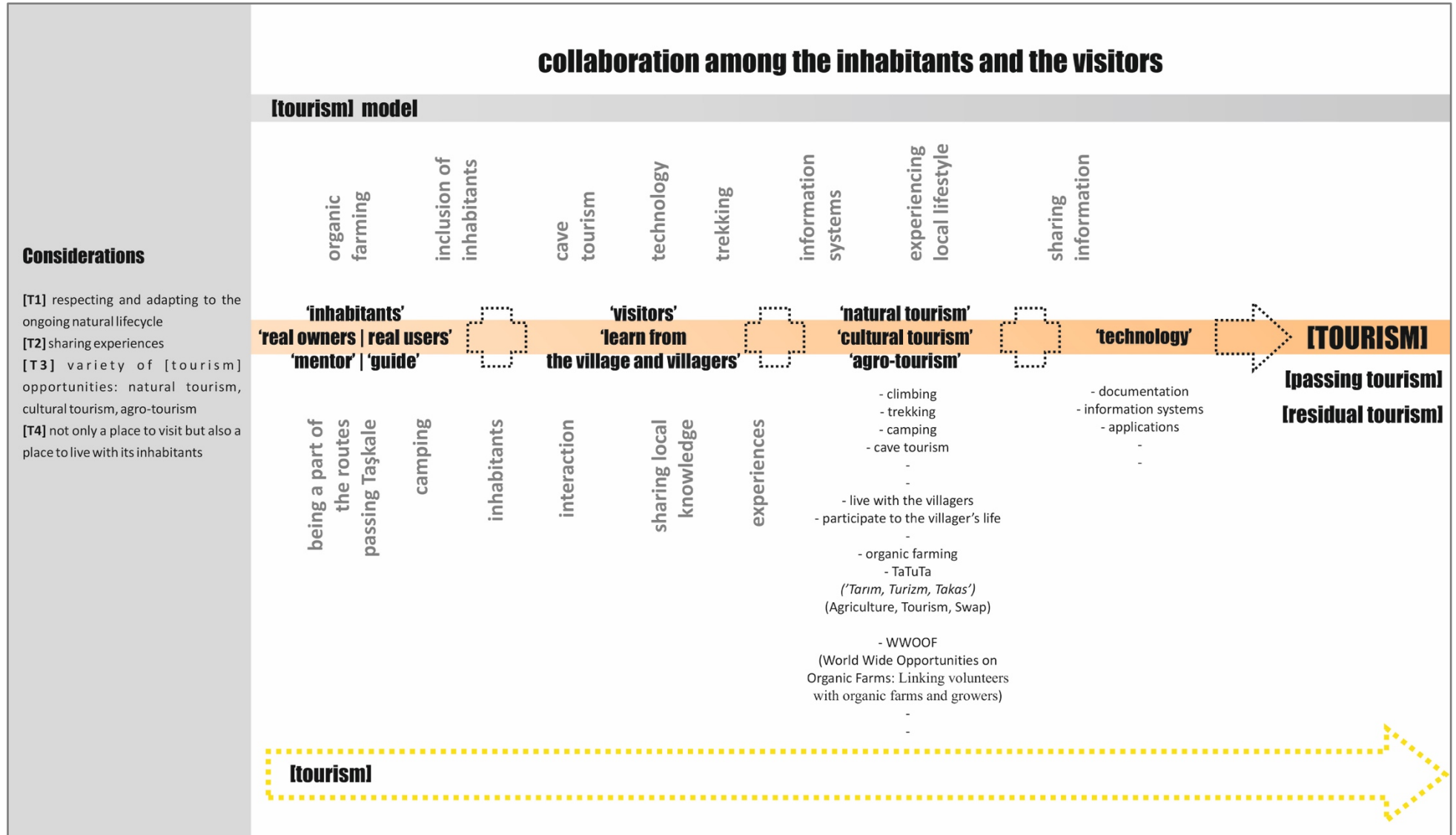
# Policies & Strategies for Community-Driven Conservation and Empowerment

## 2 Action Areas of Conservation Model



# Policies & Strategies for Community-Driven Conservation and Empowerment

## 3 [Tourism] Model



# Policies & Strategies for Community-Driven Conservation and Empowerment

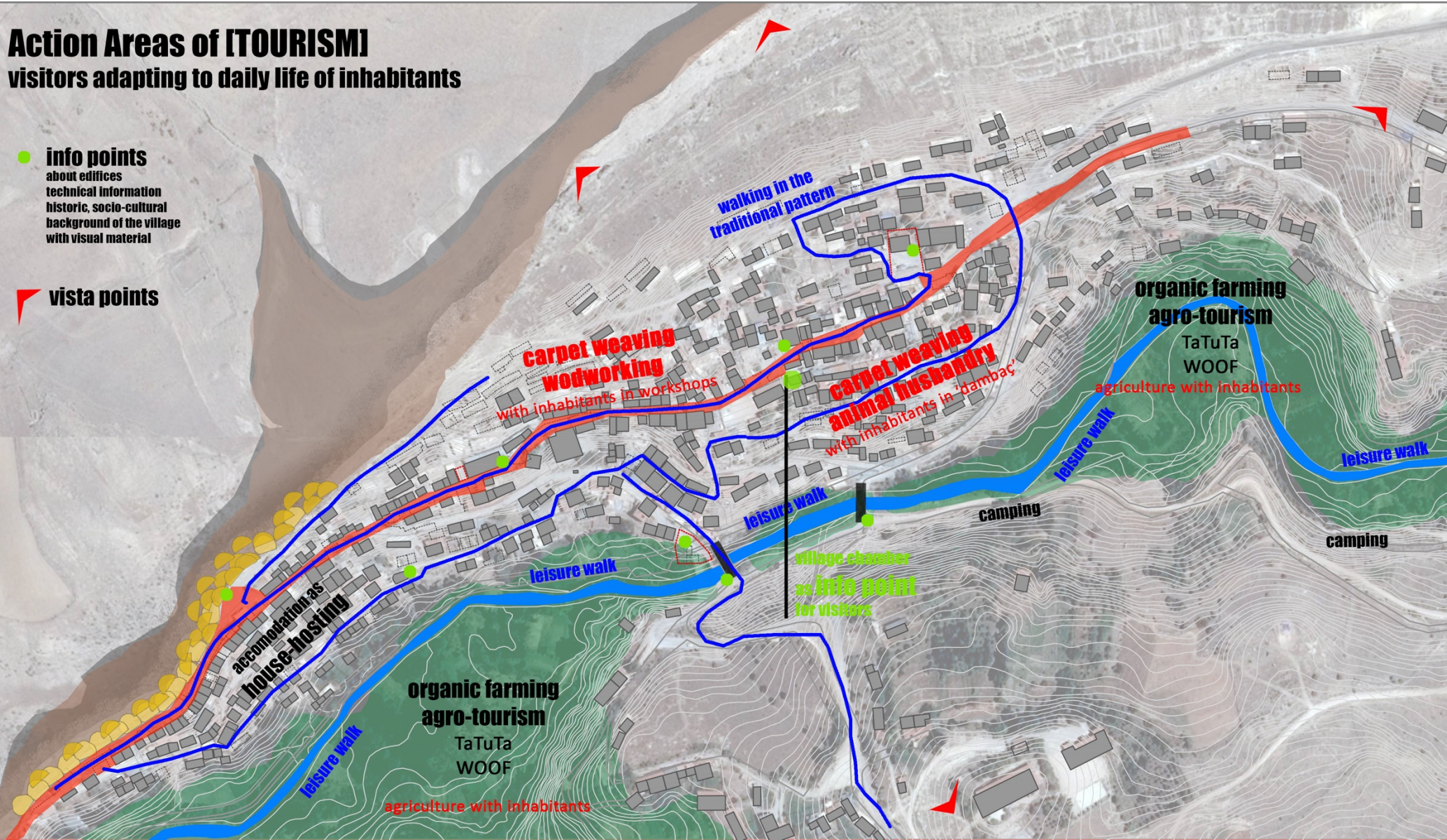
## 3 Action Areas of [Tourism] Model

### Action Areas of [TOURISM]

visitors adapting to daily life of inhabitants

**info points**  
about edifices  
technical information  
historic, socio-cultural  
background of the village  
with visual material

**vista points**



**carpet weaving wovworking**  
with inhabitants in workshops

**carpet weaving animal husbandry**  
with inhabitants in "dambaç"

**organic farming agro-tourism**  
TaTuTa WOOF  
agriculture with inhabitants

**accommodation as house-hosting**

**organic farming agro-tourism**  
TaTuTa WOOF  
agriculture with inhabitants

agriculture with inhabitants

**village chamber as info point for visitors**

**camping**

**camping**

walking in the traditional pattern

leisure walk

leisure walk

leisure walk

leisure walk

leisure walk



## Concluding Remarks

Rural areas,

represent close relations among nature and culture are characterized by traditional practices, traditional knowledge and inherited experiences develop within their own tangible and intangible dynamics

Local community, take an active role in constructing, transferring and sustaining local values

Therefore, any decision related to rural areas should be given considering local dynamics and providing active involvement of local community, as well as diverse stakeholders to the decision-making processes.

In this way, contradictions among local values and top-down conservation, development and economic advance priorities can be prevented.

