

SUNY College of Environmental Science and Forestry

Digital Commons @ ESF

Library Faculty Scholarship

College Libraries

10-23-2015

Embedded Librarianship: Invaluable Campus Contributions

Jessica Clemons

SUNY College of Environmental Science and Forestry, jclemons@esf.edu

Follow this and additional works at: https://digitalcommons.esf.edu/libraries_fac



Part of the [Higher Education Commons](#), [Information Literacy Commons](#), and the [Science and Mathematics Education Commons](#)

Recommended Citation

Clemons, Jessica, "Embedded Librarianship: Invaluable Campus Contributions" (2015). *Library Faculty Scholarship*. 7.

https://digitalcommons.esf.edu/libraries_fac/7

This Presentation is brought to you for free and open access by the College Libraries at Digital Commons @ ESF. It has been accepted for inclusion in Library Faculty Scholarship by an authorized administrator of Digital Commons @ ESF. For more information, please contact digitalcommons@esf.edu, cjkoons@esf.edu.

Embedded Librarianship

Invaluable Campus Contributions

Jessica Clemons

Interim Director of College Libraries



State University of New York
College of Environmental Science and Forestry

Roadmap

- Extremely brief overview of embeddedness
- Case study on “extreme” embeddedness
- Example of embeddedness in course development
- A hearty sprinkling of real ways to become embedded

Overview

- Embedded librarianship comes from embedded journalism
(Drewes and Hoffman 2010)
- *Proximity* (not necessarily geographic) and *timing* are important

Overview

What does embedded librarianship look like?

Active (outreach)

At the point-of-need

Scaffolding

Liaison-ing

Partnering with departments, orgs, others

Collaborating with non-library/ian entities

Process and system oriented

Overview

**Getting out of the library is what is
most important**

AKA: less than traditional ways of engaging with
our patrons

HAVE ALL THE
FUN!



What is ESF?

- Doctoral granting SUNY institution - **STEM**
- 1900 fte
- Located across the street from SU and down the street from SUNY Upstate Medical University (Syracuse, NY)
- 2 claims to fame- longest name, largest campus

Be in “their” spaces

- Buildings?
- Online?
- How about remote research stations in the ADKs?



Who am I?

- Reference and instruction librarian
 - Undergrad/grad courses on info lit
- Emerging technologist
- Liaison to the Department of Environmental and Forest Biology
- Liaison to the Office of Research Programs
- IR manager

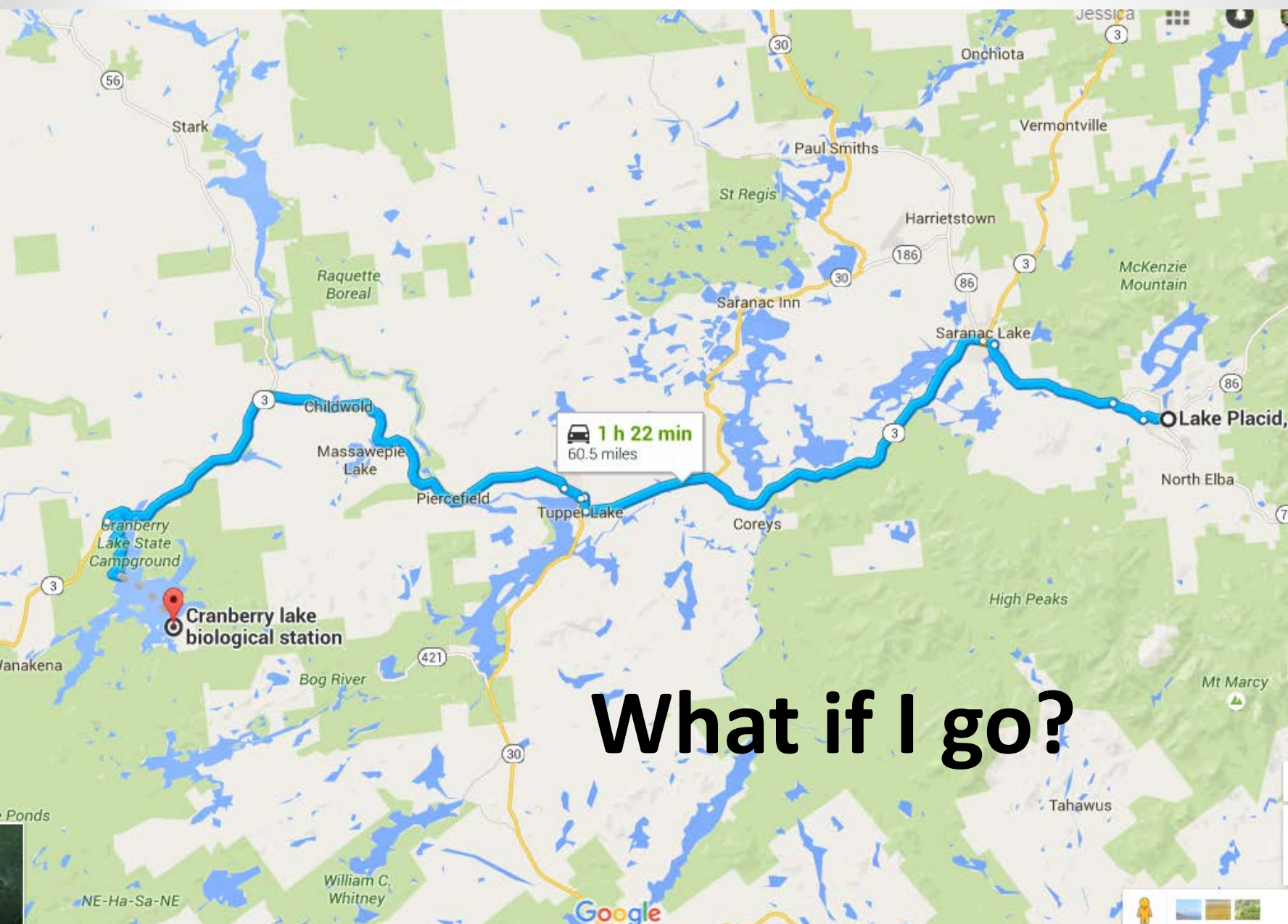
Scholarly communications librarian
With responsibilities of a library director

Making connections

- Department of Environmental and Forest Biology
- All students required to take part in the 3 week long field station experience
- Establish a hypothesis, design experiment, gather data, interpret data, present to group
 - In **one week!**

Making connections

Citing research was lacking and included as an afterthought



What if I go?



State University of New York
College of Environmental Science and Forestry

Google

Map data ©2015 Google Terms Privacy Send feedback 5 mi



The Forester: www.esf.edu/clbs

Who thinks it is weird...

...To have an info lit class on a remote field station in the ADKs?

Just about everyone!

What did I do

- Catalog searching
- Database searching, basic and advanced
- Finding full text
- Open access
- In text and full citations
 - Zotero



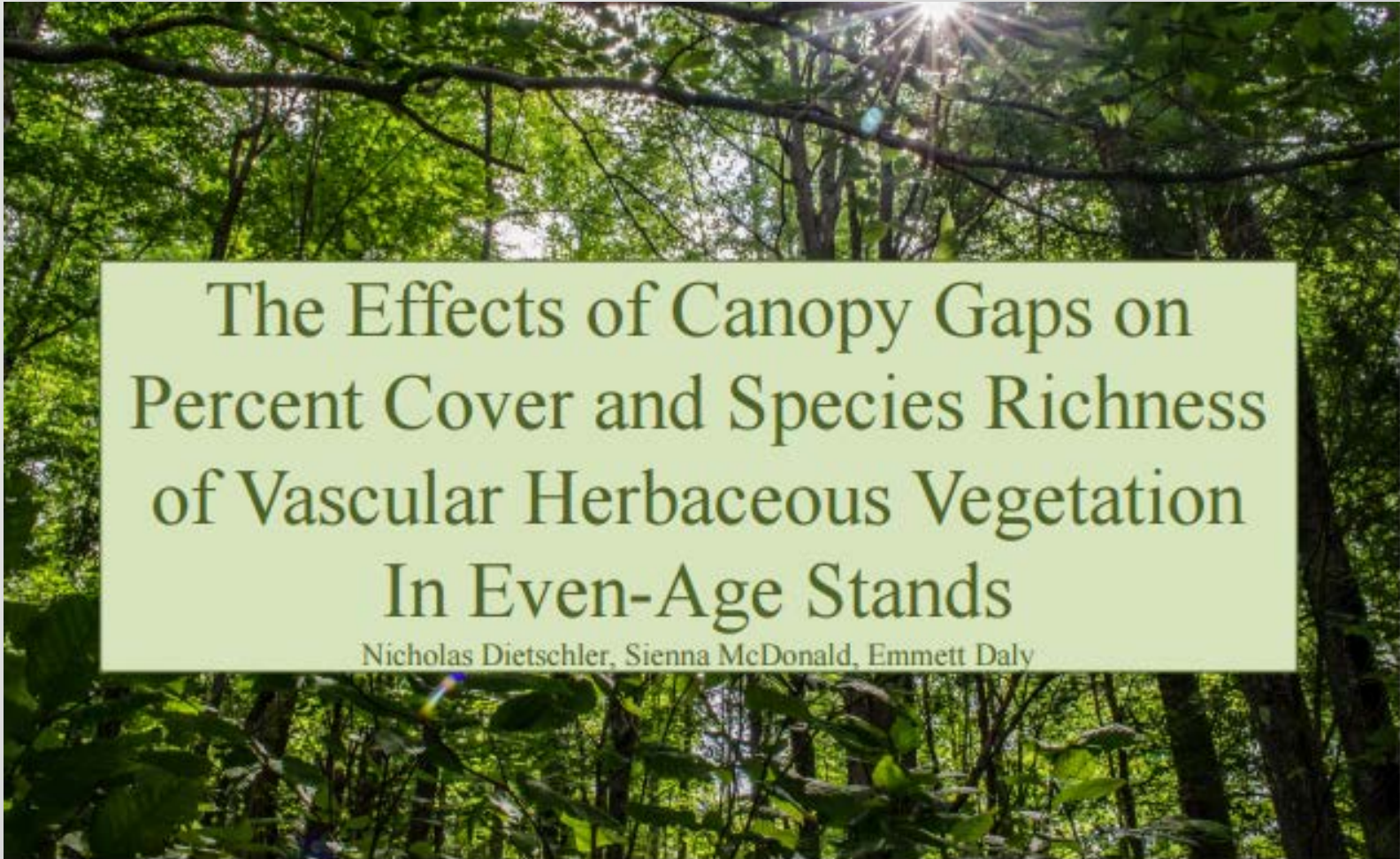
Help at the point of need

- Pressure is on for all parties
- Be the most creative
- Learn, connect, spark
- Media literacy, too
 - Citing pictures

Sweeten the pot

- Make the connections from consumer to producer
- Closing (or opening?) the scholarly communication loop
- Celebrating the student scholar
- Generating support and use of our IR,
Digital Commons @ ESF

Third



The Effects of Canopy Gaps on
Percent Cover and Species Richness
of Vascular Herbaceous Vegetation
In Even-Age Stands

Nicholas Dietschler, Sienna McDonald, Emmett Daly



State University of New York
College of Environmental Science and Forestry

Second

THE ART OF WAR AGAINST TABANIDAE

A SURVEY OF TABANIDAE AT THE CRANBERRY LAKE BIOLOGICAL STATION

Nate Morse, Chelsie Beard, and Macie Edwards

ESF

State University of New York
College of Environmental Science and Forestry

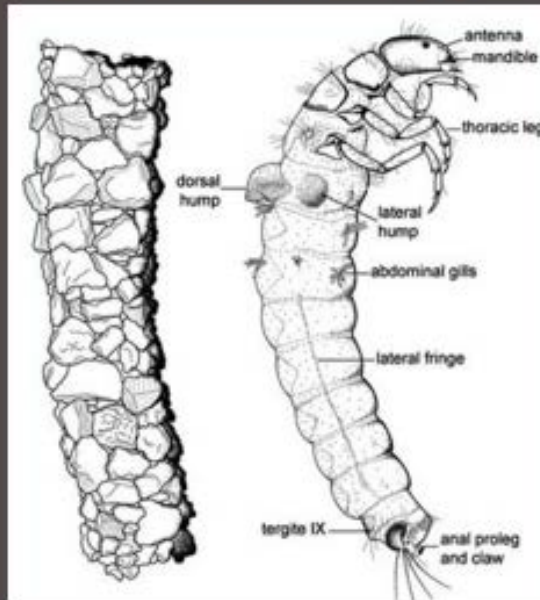


Photos courtesy of Macie Edwards, Marion Friedrich, Nate Morse (respectively)

First

WHATEVER THE CASE MAY BE: INVESTIGATING TRICHOPTERA DIVERSITY IN THREE ADIRONDACK STREAMS

Emily Artruc
Miranda Tanner
Johanna Little
Grace Gustke
Samantha Hollister



State University of New York
College of Environmental Science and Forestry

Cranberry Lake Biological Station Research Symposium

Session A

2015



Digitalcommons.esf.edu/clbs



State University of New York
College of Environmental Science and Forestry

And the repeat 6 weeks later

2 sessions a summer

Assessment

- Gathering feedback
- Sharing with faculty (director of CLBS)
- Using that to revise or reinforce concepts

But Jessica...

What if my campus doesn't have 25,000+ acres with remote field stations and research facilities?

It begins with the search

Your search committee

=

start up package



Asking a lot of questions

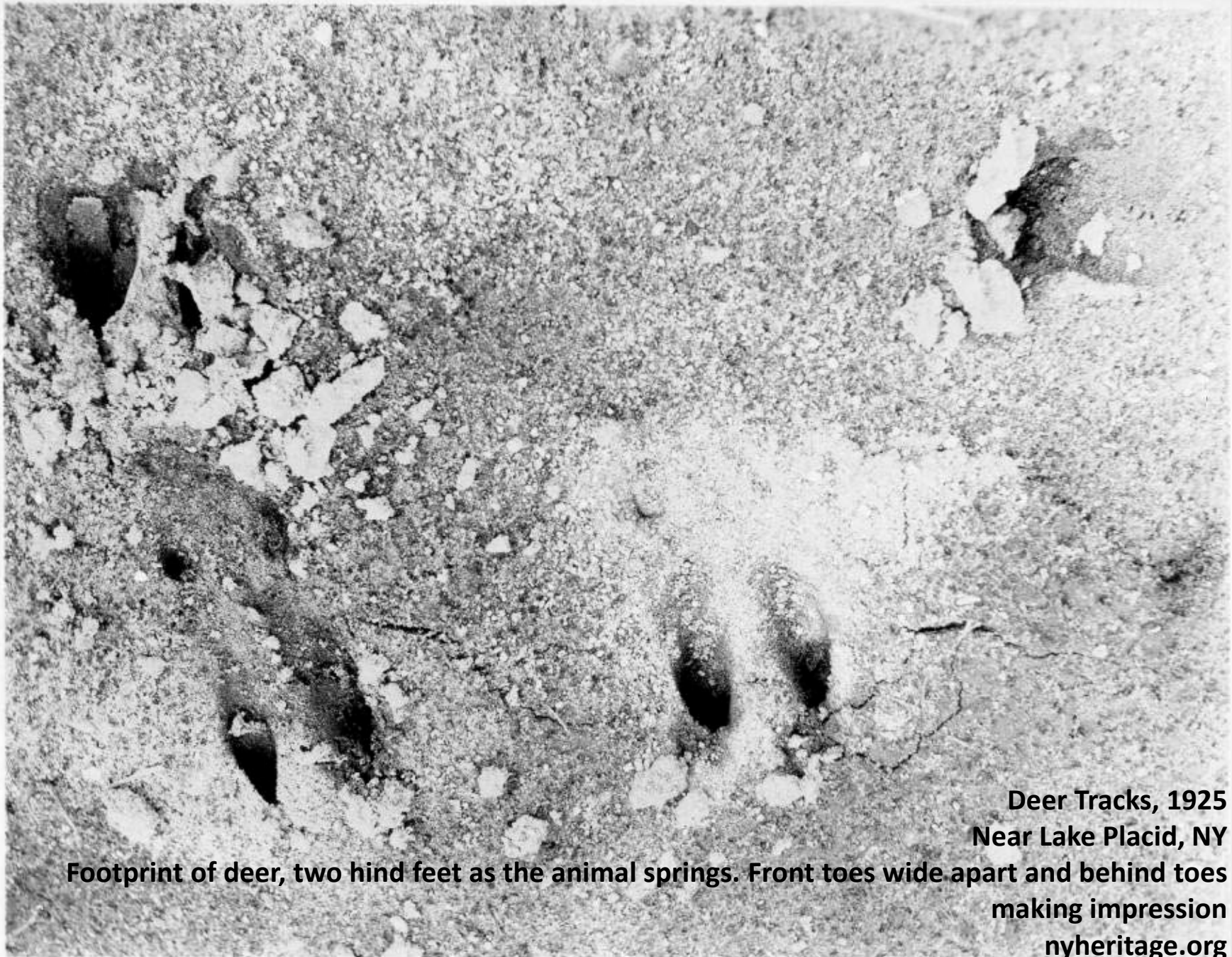
- What do you do for...
- What if there was...
- How do you do...
- What if I...

After you are “established”

Anticipate needs

Steve Jobs?

Surprising and delighting our patrons



Deer Tracks, 1925
Near Lake Placid, NY
making impression
nyheritage.org

Footprint of deer, two hind feet as the animal springs. Front toes wide apart and behind toes

Digital collections



State University of New York
College of Environmental Science and Forestry

Digital Commons @ ESF

Home About FAQ My Account

Home > [RWLSannals](#) > 10 [Next >](#)

ROOSEVELT WILD LIFE ANNALS

Roosevelt Wild Life Annals

[Charles E. Johnson](#), *SUNY College of Environmental Science and Forestry*

Download Full Text (7.5 MB) [Download](#)

Table of Contents
Studies on the bank swallow, *Riparia riparia riparia* (Linnaeus) in the Oneida Lake Region

Publication Date
1936

Volume

[Internet Archive](#)

Included in
[Animal Sciences Commons](#),
[Biodiversity Commons](#),
[Ecology and Evolutionary Biology Commons](#), [Natural Resources and](#)

Search

Enter search terms:

in this collection ▾

[Advanced Search](#)

[Notify me via email or RSS](#)

Browse

[Collections](#)
[Disciplines](#)
[Authors](#)

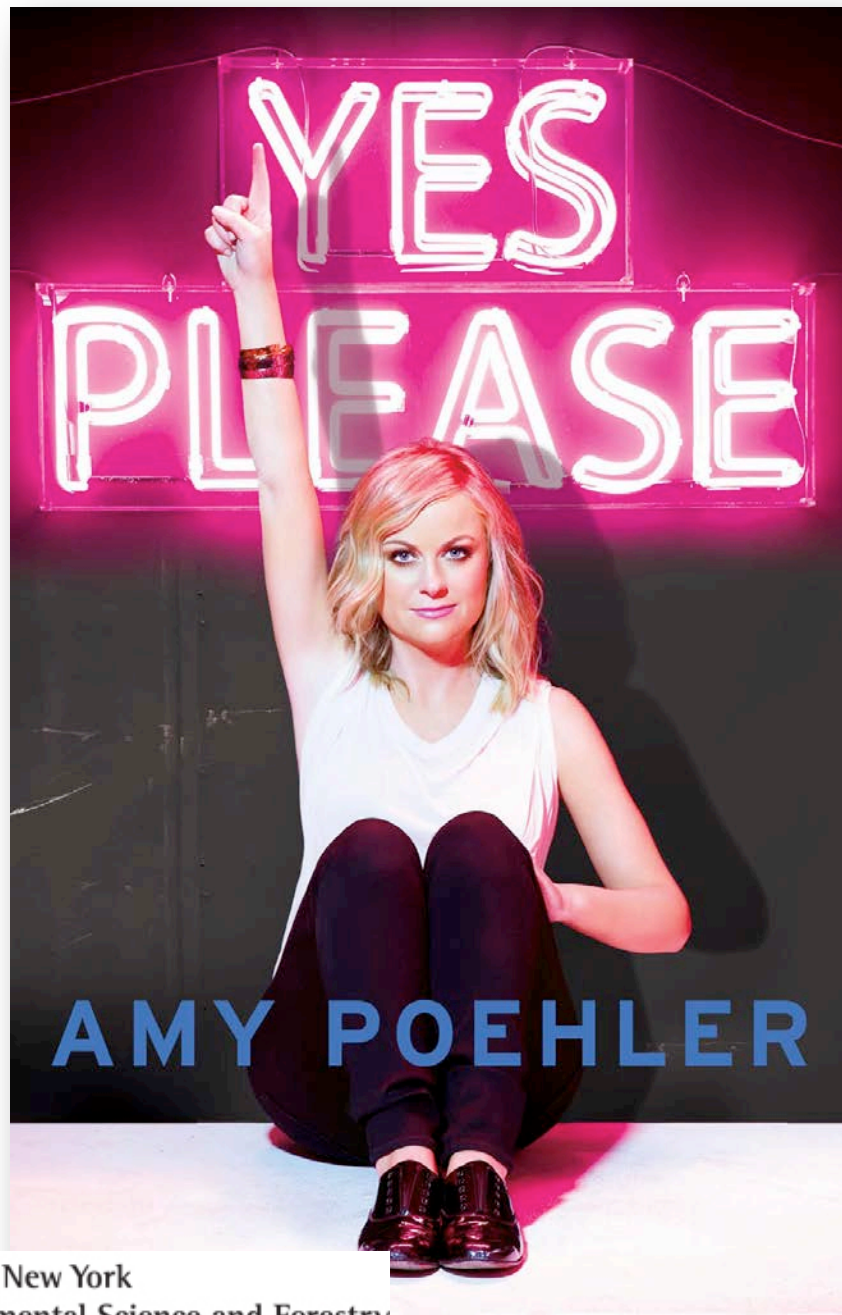
Author Corner

[Author FAQ](#)
[ESF Guidelines and Policies](#)

But what else?

Research data management

- Required by federal funding agencies
- Difficult to do
 - Unless you have a team
- What would that course look like at ESF?



AMY POEHLER



State University of New York
College of Environmental Science and Forestry

EFB/FOR 797

- Managing & Archiving Research Data
- Co-developed and co-taught
- 2 departmental faculty, 1 faculty librarian

Embed yourself in the campus

- Faculty interview sessions/new faculty orientation
- Departmental seminars/meetings
- Graduate student presentations
- Campus committees
- Research offices
- Online instructional opportunities

I'd love to include you, but

- No time?
- Offer extra credit if they attend library hosted workshops
- Offer to advise/review assignments
- At the very least ask them to recommend specific library services

Embed yourself in the campus

Think about the research process rather than singularly focusing on instructional aspects

Embed yourself in the campus

What we do is valuable and invaluable

Be bold

Be daring

#makeithappen

THANK YOU

Jessica Clemons
Interim Director of College Libraries

Digitalcommons.esf.edu



State University of New York
College of Environmental Science and Forestry