



THE
EIGHTY-FIRST
COMMENCEMENT

ASSUMPTION COLLEGE

SATURDAY, MAY THE TWENTY-THIRD
NINETEEN HUNDRED AND NINETY-EIGHT



Order of Exercises

Academic Procession

Presiding

Charles L. Flynn, Jr., Ph.D.
President ad interim

Invocation

Reverend Roland O. Guilmain, A.A., S.T.D.
Vice President for Religious Affairs and Director of Campus Ministry

National Anthem

Senior Members of the Assumption College Chorale

Greetings

Charles L. Flynn, Jr., Ph.D.
Very Reverend John L. Franck, A.A.
Chairman, Board of Trustees
Provincial, North American Assumptionists
Honorable Raymond V. Mariano
Mayor, City of Worcester

Presentation of St. Augustine Award

Beverly J. Beahn-Fucile

Valedictory Address

Amy M. King

Presentation of Candidates for Honorary Degrees

John B. Connolly
Dr. George S. Elias
Dr. Joseph H. Hagan
Patrice O'Malley Hagan
Most Reverend Robert E. Mulvee
Dr. Claire Quintal
Barclay Wood

Introduction of Commencement Speaker

Allison J. Skowron
Salutatorian

Commencement Address

Dr. Joseph H. Hagan

Presentation of Candidates for Degrees

Mary Lou Anderson, Ed.D.
Dean of Graduate Studies and Continuing Education
Graduate Degrees
Continuing and Professional
Education Degrees

Paul R. Douillard, Ph.D.
Dean of Undergraduate Studies
Undergraduate Degrees

Alma Mater

Assumption College Chorale and The Symphonic Brass Quartet
Michelle Graveline, D.M.A.
Director

Remarks and Benediction

Most Reverend Daniel P. Reilly, D.D., S.T.D.
Bishop of Worcester

Recessional

Reception

Plourde Recreation Center

Graduating Class of 1998

Graduate School

MASTER OF BUSINESS ADMINISTRATION

Patricia J. Boisvert
David A. Buckley
Geoffrey G. Casey
Michael T. Gaffney

Peter W. Kirk
Sharon L. Mattus
Joyce A. McDade
Kathleen M. Murray

Ellen Neiduski
Susan M. Norling
Raymond B. Orciuch
Joan F. Perry

Kevin J. Snell
Mary C. Thrower
Barry A. Veronesi
Kathleen E. Walsh

MASTER OF ARTS COUNSELING PSYCHOLOGY

Christine L. Biron
Julianne Brechtl
Amy M. Colaianni
Fabienne J. Combe
Jeanne R. Cox
Alicja T. Czerwinska
Janet M. D'Antona
Susan J. DeDentro

Melanie A. Duarte
Susan C. Esteves
Carrie-Ann M. Farrell
Sheridan A. Flag
Heather B. Fournier
Laura J. Gelina
Kelly Ann I. Graham
Ruth Amy Hurley

Karen A. Kazarian
Sue LeRoy
Carol A. Mahoney
Tanja K. Marinic
Robert C. Murphy
Richard G. O'Garr
Amy M. Pighetti
Jennifer L. Pinto

Gregg Rivers
Diane Rose
Dale R. Sickles
Brian E. Smith
Tara M. Tivnan
Debra C. Van Sant

MASTER OF ARTS EDUCATION

Mary R. Bresnahan

Thomas E. Burke

Jody D. Carrelli

Nicole S. Jolie

MASTER OF ARTS/CERTIFICATE OF ADVANCED GRADUATE STUDIES REHABILITATION COUNSELING

John F. Fitzgerald, Jr.
John M. Gentile
Kady B. Kilverton-Allard
Robert R. Mailloux

Peter D. Marano
Christine E. McKenna
Michael J. Monticelli
Karen O'Connor

Garol D. Papazian
Cynthia A. Pirani
Thomas D. St. John
Patricia A. Shea

Stephanie A. Sheehan
Christine M. Soden

MASTER OF ARTS REHABILITATION COUNSELING

Myra Alexander
Gregory C. Anderson
Karen F. Andrade
George F. Blett, II
Kara A. Bochman
Megan A. Bonner
Carol J. Brill
Cynthia J. Burkhardt
Maureen L. Carlos
Jody L. Casey
Betty Castiglioni
Margaret A. Claunch
Kristine R. Costa
Michele E. Costello

Bonny L. Cummings
Carlos M. Curbelo
Barbara G. Dahm
Thomas J. Dalton
Teresa S. DaSilva
Linda L. Deschenes
Nora E. Elias
Victoria E. Ferrara
Kathleen A. Firlings
Elizabeth A. Fyrberg
Keith J. Gaugler
Daniel J. Gilbride
Ann M. Goff
Kathleen A. Granken

Steven A. Hook
Paul H. Hughett
Milton E. Keene
Robert Lally
William M. Lanciani
Michael J. Leahy
Brenda J. Marshall
Jane M. McDonald
Kristina M. Micheli
Kristi N. Moran
Matthew C. Morse
Vicki Pickell-Adamo
Elinor L. Pickering
Robert P. Pisarski

Stephanie L. Ramos
Markku S. Rautiainen
Alan D. Read
Marcelino Rivera
Mary C. Ruggieri
Karen E. Russell
Debra L. Satter
Kristen L. Siddle
Jane E. Signorelli
Kristen L. Spardello
Anne L. Spirlot
Jennifer L. Stockford

MASTER OF ARTS SPECIAL EDUCATION

Susan M. Bolster
Rose M. Dostourian
Thomas A. Giampapa
Keith E. Guyette
Susan E. McClure
Lauren L. McLaughlin
James F. Murphy
Cynthia A. Myra
Dianne M. Patrick
Stephanie L. Ruggiere
James L. Ryan

MASTER OF ARTS RELIGIOUS EDUCATION

Mary Madeleine Boegemann
Ann E. Listenik
Karla K. Reuter
Loreen M. Ritter

MASTER OF ARTS THEOLOGY

Cheryl Amrich
Esaho Lokombe Kipuke
Howard D. McGinn

Center For Continuing and Professional Education

ASSOCIATE OF BUSINESS ADMINISTRATION

Susan M. Benker, Accounting, Cum Laude

Janine A. Brueggemann, Accounting

ASSOCIATE OF LIBERAL STUDIES

Lynne M. Amsden

Ann V. Baird

Nancy A. Buckingham, Summa Cum Laude

Marcia R. Calcagni, Magna Cum Laude

Sharon L. Corricelli, Summa Cum Laude

Lynne E. Cronin, Magna Cum Laude

Brien M. Devaney

Robin M. Drumstas, Cum Laude

Richard K. Duguay, Summa Cum Laude

Timothy E. Gannon, Magna Cum Laude

Phyllis M. Hanlon, Summa Cum Laude

Dianne M. Harrington, Summa Cum Laude

Karen K. Harvey, Summa Cum Laude

Eleanor A. Hughes, Magna Cum Laude

Virginia M. Kanz-Hermansky, Cum Laude

Nancy D. Keeney, Magna Cum Laude

Joseph G. Lavin, Magna Cum Laude

Mary R. Mahan, Summa Cum Laude

Susan E. Murphy, Summa Cum Laude

Charles B. Norris, Cum Laude

Shirley Ryznal

BACHELOR OF BUSINESS ADMINISTRATION

Rebecca J. Adams, Accounting, Magna Cum Laude

Linda M. Collins, Management, Summa Cum Laude

Mark A. Coolidge, Management, Magna Cum Laude

Linda R. Fazio, Accounting, Magna Cum Laude

Tab J. Fulton, Management, Cum Laude

Alison L. Henderson, Accounting, Magna Cum Laude

Chigusa Kawakami, Management

Bazhanna Lastovskaya, Accounting, Cum Laude

Lorry A. LaVigne, Management, Magna Cum Laude

Rosemary Longo, Management

Katherine A. Mahoney, Management

Paul J. Normile, Accounting

William J. Riley, Management, Cum Laude

Patricia M. Roberts, Management, Magna Cum Laude

John D. Robillard, Management

Lisa Y. Shaw, Management

Lucy J. Sherburne, Accounting

Donna L. Sinnery, Management, Magna Cum Laude

Donna A. Wiinikka, Management, Magna Cum Laude

BACHELOR OF LIBERAL STUDIES

(a) Beverly J. Beahn-Fucile, Summa Cum Laude

Martha I. Hosey, Magna Cum Laude

Nancy B. Lebowitz, Magna Cum Laude

(b) Claire B. Roy, Summa Cum Laude

BACHELOR OF SCIENCE IN LIBERAL STUDIES

Carrie A. Bush

Marcia R. Calcagni, Magna Cum Laude

Nicholas M. Cara Donna, Jr., Magna Cum Laude

Mary E. Czaja, Magna Cum Laude

Bonnie J. Davis

Amy F. Duarte, Cum Laude

Sheryl E. Farnam

Karen R. Frykberg, Summa Cum Laude

Ann M. Herbes

Beth M. Hernandez, Magna Cum Laude

Cynthia A. Kingdon, Magna Cum Laude

Elaine M. Latino, Summa Cum Laude

Lise M. Magnuson, Magna Cum Laude

Kim M. Mann, Magna Cum Laude

Linda E. Perkins, Summa Cum Laude

Judith A. Philip, Summa Cum Laude

Michael J. Pillsbury

Doreen A. Robichaud

Elaine J. Robinson, Cum Laude

Mary M. Schubert, Magna Cum Laude

Margaret M. Small, Cum Laude

Patricia E. Valliere

Lisa M. Whitney, Magna Cum Laude

(a) Saint Augustine Award

(b) Outstanding Service Award

Undergraduate College

BACHELOR OF ARTS

- Micky Abbateamarco, *Biology*
Monica L. Albert, *Social and Rehabilitation Services/Sociology*
Debra M. Alim, *Mathematics, Elementary Education*
Jeffrey M. Allain, *Accounting*
Erik M. Anderson, *Psychology*
Rebecca Andrade, *Management*
Arthur J. Andreoli, Jr., *Marketing*
Andrew M. Anibaldi, *Computer Science*
Ani M. Arakelian, *Sociology, Elementary Education*
(e) Angela L. Arruda, *Psychology, Summa Cum Laude*
Ara G. Asadoorian, *History, Secondary Education*
Mizue Asano, *Management*
Craig M. Aspell, *Marketing/Economic Theory*
Aaron K. Ayers, *Philosophy*
Ryan M. Baker, *Management*
Heather Barrows, *History*
Elizabeth A. Barry, *Psychology, Elementary Education*
Jeremy P. Basso, *Marketing*
Christine M. Batista, *Psychology*
Mark R. Beauregard, *Sociology*
Lisa A. Bengyak, *Management*
Kari R. Bentz, *Accounting, Cum Laude*
Nicholas A. Bequary, *Communications*
Dorothy J. Berardo, *Communications*
Lisa J. Betti, *Social and Rehabilitation Services, Summa Cum Laude*
Amy M. Bianchi, *Psychology/Social and Rehabilitation Services, Cum Laude*
Donald L. Bibo, *Marketing*
Meg M. Bierfeldt, *Social and Rehabilitation Services, Cum Laude*
Robert J. Billings, *Psychology*
Stacie E. Bilowz, *Psychology*
David P. Birch, *Theology*
Gregory T. Borecki, *Communications*
(f) (*) Kimberly L. Bossak, *English*
Brian C. Bourque, *Theology*
Judith A. Brazell, *Communications*
(f) Richard P. Brederson, *Politics, Magna Cum Laude*
Matthew J. Bresnahan, *Management*
Amy M. Brett, *Social and Rehabilitation Services*
Patrick M. Brown, *Politics*
Tara L. Bucciaglia, *English, Elementary Education*
Melissa M. Burgers, *Spanish*
Amy L. Cadieux, *Management*
(f) Carl M. Cafaro, *Politics, Cum Laude*
A. Leo Caisse, III, *French*
Nicole D. Califano, *Psychology, Elementary Education, Cum Laude*
Christopher J. Camell, *Accounting*
Kristy L. Campanile, *Psychology/Social and Rehabilitation Services, Cum Laude*
Chandra A. Capone, *Communications*
Maribeth A. Capparelli, *Social and Rehabilitation Services/ Psychology*
Gina E. Cappucci, *Social and Rehabilitation Services*
Michael K. Carignan, *Computer Science*
Jessica M. Carneiro, *Foreign Affairs*
Letitia M. Carr, *Social and Rehabilitation Services*
Jennifer K. Casey, *English, Elementary Education*
Kimberley A. Casey, *Social and Rehabilitation Services/ Studio Art*
Anne C. Cavanaugh, *Social and Rehabilitation Services, Elementary Education, Cum Laude*
Joseph G. Ciccanesi, III, *Marketing*
(e) (f) Andrew J. Clark, *English, Summa Cum Laude*
Melissa M. Coache, *Biology with Concentration in Biotechnology, Summa Cum Laude*
Leslie M. Coakley, *Management*
Amy J. Corcoran, *History*
Keith K. Cormier, *Communications/English Magna Cum Laude*
Natasha Cormier, *Politics/Psychology, Magna Cum Laude*
Mark B. Cosenza, *Accounting*
Jason M. Costa, *Management*
Nicole M. Couture, *Psychology, Elementary Education, Cum Laude*
Brian J. Coyman, *Communications*
Carolyn S. Crowe, *Psychology, Magna Cum Laude*
(e) Gretchen A. Crowley, *Psychology, Elementary Education, Summa Cum Laude*
Jenna A. Cuddeback, *Social and Rehabilitation Services*
Meredith H. Curran, *Politics*
Mary Cutone, *Communications*
Tara M. D'Ambra, *Psychology/Sociology*
Jennifer K. Davidson-Haffty, *Politics*
Stephanie A. Day, *Spanish*
Diana M. DeFelice, *Social and Rehabilitation Services*
Brandon V. DeLuca, *Marketing*
(e) Kerrie E. Demers, *Psychology, Summa Cum Laude*
Emily G. Densberger, *History, Secondary Education*
Andrew J. DePatie, *Marketing/Communications*
R. Derek Desharnais, *Sociology*
Heather L. Devine, *English/Marketing*
Matthew R. Deyette, *History*
Liberty J. Dilts, *History, Cum Laude*
Diana M. DiPietro, *Social and Rehabilitation Services*
Marisa DiRoberto, *English, Secondary Education*
(e) Giuseppina A. DiSisto, *Communications, Magna Cum Laude*
Kathryn C. Dolan, *Communications*
Christine E. Donovan, *Social and Rehabilitation Services*
Gigianne Douillard, *French*
Mark A. Dowgiert, *Economics with Business Concentration*
Jeffrey R. Doyle, *History*
Matthew P. Doyle, *Accounting*
MaryBeth Driscoll, *Women's Health Issues, Cum Laude*
Nicole M. Duclos, *Psychology, Cum Laude*
Patrick W. Dufour, *History/English, Secondary Education*
Carolyn M. Dunn, *Management*
Brian F. Dunphy, *English*
Sean T. Emberley, *English*
Katy A. Emerson, *Accounting*
(e) Bethany M. English, *Psychology, Summa Cum Laude*
Matthew B. Erickson, *English*
Michael A. Fearing, *Philosophy*
Brian T. Ferland, *Psychology, Magna Cum Laude*
Julie R. Ferretti, *Economics with Business Concentration*
Anne L. Fitzgerald, *History, Secondary Education, Magna Cum Laude*
Tara A. Fleming, *Psychology, Elementary Education, Cum Laude*
Rebecca A. Flores, *French/English*
Thomas M. Foley, *History*
Jessica L. Fontaine, *Psychology, Magna Cum Laude*
Samantha L. Forde, *Communications/English*
Andrew J. Fornari, *Communications/Music*
David J. Foscaldo, *Management*
Dana M. Foye, *Management*
Jean Paul Galicia, *Spanish*
Lauren M. Gargano, *Accounting, Cum Laude*
Keith J. Garvey, *Social and Rehabilitation Services*
David P. Gaughan, *Social and Rehabilitation Services, Cum Laude*
Lucely Gonzalez, *Accounting*

- Stacy L. Gosselin, *Social and Rehabilitation Services*
 Nicole E. Grady, *Social and Rehabilitation Services*
 John B. Graff, *Economics with Business Concentration*
 Elena Grammatikakis, *Biology/Spanish*
- (e) William J. Grandy, *Economics with Business Concentration, Magna Cum Laude*
 Nicole M. Gravel, *Social and Rehabilitation Services*
 Gerald P. Gray, *History, Secondary Education*
 Christopher A. Greeley, *International Business*
 Carter T. Griffin, *Sociology*
 Susan L. Grimes, *Communications, Cum Laude*
 Lisa M. Griskewicz, *Marketing*
 MaryAnn Guerrero, *English, Secondary Education*
 William C. Haberland, *Politics*
 Amy A. Hague, *Sociology*
 Erika L. Hakkinen, *Social and Rehabilitation Services, Cum Laude*
 Melissa J. Hall, *Politics*
 Stephen E. Hamwey, *Marketing*
 Monica R. Harlow, *English/Philosophy, Cum Laude*
- (*) Erin K. Haughey, *Communications/English*
 Becki J. Hauver, *Computer Science*
 Allison J. Heaney, *Social and Rehabilitation Services*
 Michael J. Henry, *Psychology*
 Jennifer A. Herard, *English, Elementary Education, Cum Laude*
 Juan C. Hernandez, *Philosophy, Cum Laude*
 Michelle R. Hill, *Biology, Cum Laude*
 Nicole S. Hill, *Environmental Science/Philosophy*
 Neil J. Hitchen, *History*
 Christopher D. Hodge, *Accounting*
- (*) Mark C. Hohenadel, *Computer Science*
 Kurt A. Hold, *Marketing*
 Sheila M. Holland, *English*
 Bryan J. Hopkins, *English/Communications*
- (e) Cary L. Hopkins Eyles, *Psychology, Magna Cum Laude*
 Andrew R. Hughes, *Management*
 Heather L. Hughes, *French/Communications*
 Leo P. Hughes, *Biology*
 Christine F. Hunnefeld, *Psychology, Cum Laude*
 Phuoc Huynh, *Management, Cum Laude*
 Adriana Y. Iannuzzi, *English*
 Richard Iozzo, *Biology*
 Patricia J. James, *English*
- (*) Kelly A. Jameson, *Social and Rehabilitation Services*
- (e) (f) Jonathan H. Jankowski, *Mathematics, Summa Cum Laude*
 Andrew S. Jannarelli, *Social and Rehabilitation Services*
 Wendi L. Johanan, *Social and Rehabilitation Services*
 Steven P. Jones, *Economics with Business Concentration, Cum Laude*
 Leanne I. Kaplan, *Psychology, Cum Laude*
 Karen E. Kardoos, *Social and Rehabilitation Services*
 Alissa M. Kasperowski, *Social and Rehabilitation Services*
 Daniel E. Kelly, *English, Secondary Education*
 Anne-Marie Kenney, *History/Politics*
 Shane M. Kent, *Computer Science*
 Maria H. Keville, *Sociology, Secondary Education*
- (*) Kevin J. Kilroy, *Computer Science/Communications*
 Dong Soon Kim, *Management*
- (d) Amy M. King, *Marketing, Summa Cum Laude*
 Shawn M. Kneeland, *Psychology/Theology*
 James J. Kollias, *Economic Theory, Cum Laude*
 Edward J. Kulbokas, III, *Biology with Biotechnology Concentration, Magna Cum Laude*
 Christopher J. LaBreck, *Social and Rehabilitation Services*
 Kerri A. Lambert, *Psychology, Elementary Education*
 Johanna M. Lamenzo, *Chemistry, Secondary Education*
 John A. Larson, *Sociology*
 Patricia A. Larson, *Biology*
 Jason A. Lawson, *Sociology*
 Emmy M. LeBlanc, *Marketing/Communications, Cum Laude*
 Renee A. LeBlanc, *Social and Rehabilitation Services*
- Jeffrey C. LeBrun, *Management, Magna Cum Laude*
 Gregory S. Leclair, *Accounting*
 Heather L. Leclair, *Sociology, Elementary Education*
 Karen P. Lee, *Social and Rehabilitation Services, Cum Laude*
 Karen J. Lefebvre, *Accounting*
- (e) (f) Jennifer M. Lefort, *Psychology, Summa Cum Laude*
 Jeffrey R. Lembo, *Management, Cum Laude*
 Richard M. Lennon, *Economics with Business Concentration*
 Amanda K. Leo, *Management*
 Michael J. Lepore, *Psychology/Philosophy, Magna Cum Laude*
 David K. Lindberg, Jr., *Economics with Business Concentration*
 Peter C. Link, *Mathematics, Summa Cum Laude*
 Stephanie R. Lisi, *Marketing*
 Tiffany K. Litch, *Social and Rehabilitation Services*
 Shannon K. Llewellyn, *Politics/History*
 Lauren K. Lombardo, *Social and Rehabilitation Services*
 Laura J. Longo, *Social and Rehabilitation Services*
 Jona P. Loring, *Accounting*
 David P. LoVecchio, *Communications*
 Brendan P. Lundt, *History*
 Joanne E. Lynch, *Psychology, Elementary Education, Cum Laude*
 Kathryn A. Lyons, *Psychology*
 Kerry B. MacDonald, *Social and Rehabilitation Services*
 Dennis J. MacMullin, *Biology with Concentration in Biotechnology*
 Julie E. MacPherson, *Biology*
 Jeffrey A. Madonna, *Philosophy*
 John F. Mahan, *Sociology, Cum Laude*
 Heather A. Mahon, *Sociology*
 Agnieszka Majda, *Chemistry*
 Elizabeth C. Malone, *Psychology*
 Riccardo Mancini, *Management*
 Todd W. Manning, *Marketing/Economic Theory*
 Leah J. Marcheselli, *Marketing*
 Michael M. Marques, *History*
 Todd M. Marrone, *Communications*
 Sue-Ann Marshall, *Social and Rehabilitation Services, Magna Cum Laude*
 Jeffrey R. Martinath, *Marketing*
 Jodi A. Matteredo, *Biology*
 Katherine C. Mattock, *Social and Rehabilitation Services*
 Jared N. Maxwell, *Politics/Communications, Magna Cum Laude*
 Maureen E. McAuliffe, *Biology, Secondary Education*
- (e) Jason R. McCall, *Psychology/Social and Rehabilitation Services, Summa Cum Laude*
 Barry M. McCarthy, *Sociology*
 Colleen M. McColgan, *Social and Rehabilitation Services*
 Shane C. McCutchen, *Psychology*
 Brent McDonald, *History*
 Margaret M. McDonald, *Social and Rehabilitation Services*
 Sheila D. McDonald, *Accounting, Cum Laude*
 Kimberly M. McGrath, *English*
 Carolyn F. McManus, *Management*
 Christopher F. McNamara, *Politics*
 Meredith L. McRae, *Spanish, Cum Laude*
 Joshua J. Mendel, *Management*
 Albert D. Messer, *Communications*
 Michelle K. Micari, *Social and Rehabilitation Services*
 Lauren E. Michalak, *Social and Rehabilitation Services*
 Paul M. Milheiro, *Economics with Business Concentration*
 Amanda E. Miller, *Marketing*
 Susan M. Mills, *Accounting*
 Katie L. Minahan, *English*
 Andrea M. Minichiello, *Psychology*
 Jordan E. Mogob, *Social and Rehabilitation Services*
- (c) Derek M. Mohamed, *Economic Theory, Summa Cum Laude*
 Amy J. Monahan, *Social and Rehabilitation Services, Elementary Education, Cum Laude*
 Julie A. Morris, *Spanish/French, Secondary Education, Cum Laude*
 Lisa M. Moulton, *English, Secondary Education, Cum Laude*

- Christina M. Mullen, *Communications/English*
 Joy S. Mullen, *Social and Rehabilitation Services*
 Taryn C. Murphy, *Communications*
 Jennifer A. Murray, *Social and Rehabilitation Services*,
Magna Cum Laude
 Christopher J. Nagy, *Communications*
 Cheryl E. Nardine, *Biology/Environmental Science*
 (e) Kimberly A. Nelson, *Politics, Summa Cum Laude*
 Maura E. Neville, *Biology*
 Donna K. Nodson, *Accounting*
 (e) Kristal M. Oakes, *Psychology, Summa Cum Laude*
 Joseph T. O'Brien, *Marketing*
 Bruce J. O'Connell, *History*
 Katie M. O'Connor, *Social and Rehabilitation Services*
 Matthew S. O'Connor, *Communications*
 Vincent D. O'Connor, Jr., *Social and Rehabilitation Services*
 Erin N. O'Leary, *Communications*
 Robert C. Oliver, *Sociology*
 Ashley A. O'Shea, *Social and Rehabilitation Services*
 Meg D. O'Toole, *Social and Rehabilitation Services*
 Jamie M. Pahigian, *English/Social and Rehabilitation Services*,
Magna Cum Laude
 Jeffrey J. Painter, *History*
 Timothy J. Palmer, *Marketing*
 Stacy D. Papagno, *Chemistry, Magna Cum Laude*
 Rebecca M. Pata, *Biology*
 Jana M. Patten, *Social and Rehabilitation Services*
 Shawn D. Paul, *English, Magna Cum Laude*
 Lori L. Pelczarski, *Economics with Business Concentration, Cum Laude*
 Tara L. Pellegrino, *Biology*
 Robyn N. Percy, *English/Politics*
 Christopher M. Perkins, *Marketing*
 Jessica M. Perrault, *Social and Rehabilitation Services/Music*,
Cum Laude
 Jill N. Persichetti, *Social and Rehabilitation Services, Cum*
Laude
 Elyssa G. Pettepit, *Psychology*
 Gregory J. Pettis, *Biology, Cum Laude*
 Kristen M. Picone, *Psychology, Elementary Education*
 Nicole T. Piette, *English, Secondary Education*
 (e) (d) Lori J. Piniarski, *Psychology, Summa Cum Laude*
 Renata A. Plewa, *Foreign Languages*
 Katherine E. Porreco, *Biology, Magna Cum Laude*
 Brian E. Potter, *Social and Rehabilitation Services*
 Jessica A. Powers, *Psychology, Cum Laude*
 Kerri L. Pryor, *Spanish, Secondary Education*
 Stephen J. Puerini, *Biology*
 Andrew D. Quinn, *Social and Rehabilitation Services*
 Sharyn A. Rainey, *Spanish, Secondary Education, Cum Laude*
 Donald A. Randazzo, *Psychology*
 Jennifer L. Reardon, *Chemistry, Magna Cum Laude*
 Carolyn D. Reid, *Social and Rehabilitation Services*
 Theresa A. Reinhardt, *History*
 Brian J. Rigoli, *Computer Science*
 Tanya A. Robideau, *Social and Rehabilitation Services, Magna*
Cum Laude
 Allyson R. Rockwell, *Social and Rehabilitation Services*,
Summa Cum Laude
 Trisha L. Rodricks, *Psychology, Magna Cum Laude*
 Matthew M. Rogers, *Marketing*
 Erika J. Rothemich, *Biology*
 Danielle M. Roux, *Social and Rehabilitation Services*
 Paulaine N. Russell, *Economics with Business Concentration*
 (f) Steven R. Rust, *Foreign Affairs, Cum Laude*
 (c) George A. Doyle Scholarship Award Recipient
 (d) Marion Merit Award Recipient
- Marat Ryndin, *Communications*
 Steven D. St. Martin, *History, Secondary Education*
 Patricia I. Samaris, *Psychology/Politics*
 Megan E. Sanford, *Psychology*
 Caterina E. Sanguinetti, *Psychology/Communications, Magna*
Cum Laude
 James D. Santacroce, *History, Secondary Education, Cum Laude*
 Cynthia C. Sawicki, *Psychology*
 Lynn R. Schubert, *Social and Rehabilitation*
Services/Philosophy, Magna Cum Laude
 Joanna L. Sharp, *Biology, Cum Laude*
 David E. Simmons, *Management*
 Ty R. Skelton, *Communications/Politics*
 (d) (f) Allison J. Skowron, *International Business/Spanish*,
Summa Cum Laude
 Craig T. Smith, *Biology*
 Gregory J. Smith, *Marketing*
 Jason M. Snow, *Management*
 Jeffrey A. Stuart, *Sociology*
 Cathleen M. Sullivan, *French/Communications, Magna Cum Laude*
 Michael K. Sullivan, *Theology, Cum Laude*
 Molly E. Sullivan, *Communications/English*
 Sarah J. Sullivan, *Communications*
 Megan L. Swenson, *Social and Rehabilitation Services, Cum Laude*
 William J. Szenda, *Psychology*
 Vikki L. Szcwczyk, *Social and Rehabilitation Services, Cum Laude*
 Paul M. Tangney, *Marketing*
 Stephen A. Tangney, *Politics*
 Craig M. Tanguay, *Biology*
 Holly A. Tavalone, *English*
 Colleen J. Teehan, *Psychology, Cum Laude*
 Luke E. Thompson, *Foreign Affairs*
 Jennifer K. Thomson, *Accounting, Magna Cum Laude*
 Caitlin A. Tirrell, *Communications*
 Joseph R. Tomaski, *Music*
 Erica L. Torrey, *English, Secondary Education*
 Ryan W. Towsley, *Communications*
 An Tran, *Accounting*
 (*) Duy Q. Tran, *Accounting*
 Felix E. Trinidad, Jr., *International Business*
 Lori-Anne Troilo, *Sociology*
 Joseph P. Turmel, *English*
 Angela L. Vaillant, *Social and Rehabilitation Services*,
Magna Cum Laude
 Pete A. Vecchiarelli, *Psychology*
 Heather K. Vincent, *Communications*
 Bruce G. Vitarisi, *Accounting*
 Veronica Voloka, *Psychology*
 (*) Jon D. Volpe, *Philosophy/Classics*
 Christopher M. Waldron, *Spanish/Philosophy*
 Joseph P. Walejko, *English/Communications*
 Thomas E. Wales, *Chemistry/Spanish, Magna Cum Laude*
 Lauren Walker, *History*
 Jennifer L. Webb, *Marketing, Cum Laude*
 Keith F. Welch, *Mathematics*
 Kristen M. Wheelock, *Psychology, Cum Laude*
 Kendra M. Whiting, *English, Elementary Education*
 (*) John J. Wholey, Jr., *History, Secondary Education*
 Brian J. Wilson, *Social and Rehabilitation Services*
 Jennifer L. Wood, *Social and Rehabilitation Services, Cum Laude*
 Meghan E. Workman, *Accounting*
 Amanda L. Young, *Psychology*
 A. Michael Yurof, *Management*
 Scott J. Yusias, *Economics with Business Concentration*
- (e) Members of Delta Epsilon Sigma Honor Society
 (f) Augustine Scholarship Award Recipient

(*) degree in progress

This is not an official document of Assumption College.

John B. Connolly

John B. Connolly is President and CEO of CERJAC Telecom Operation, a leading manufacturer of test equipment for the telecommunications industry and a subsidiary of Hewlett-Packard Co. Mr. Connolly co-founded CERJAC in 1993, and a year later the company had total sales of \$25 million.

In 1968, Mr. Connolly co-founded Tau-tron, a leading manufacturer of high speed digital transmission and multiplexing test equipment. Based upon a unique technology providing superior operating characteristics, the company's telecommunications test sets have been used by operating telephone companies, by telecommunications equipment manufacturers and by government communications agencies. As Vice President, Treasurer and Director of Tau-tron Inc., Mr. Connolly has had the principal responsibility for managing the company's daily activities as well as its long range market planning. Tau-tron was acquired by General Signal in 1982.

From 1964 to the founding of Tau-tron, Mr. Connolly was a technical staff member of the Massachusetts Institute of Technology Lincoln Laboratory. His responsibilities included technical direction of satellite command and control systems, which included the design of high speed digital frequency synthesizers, the study of techniques of applying logical redundancy and information coding to improve anti-jam satellite communications systems, and the design of anti-jam satellite command systems.

He has written many technical papers and given many technical presentations during the course of his engineering career. He holds one U.S. patent.

Mr. Connolly became a Trustee of Assumption College in 1983 and provided distinguished leadership as Vice Chairman of the Board, Chairman of the Finance Committee, and in other major posts. He served as Vice Chairman of the \$15 million Campaign for Assumption College. He was named an Honorary Trustee in 1995 and received the President's Medal in the same year.

Mr. Connolly received his B.S., magna cum laude, in Electrical Engineering from the University of Lowell and studied Applied Physics at Harvard University. He received his Master's in Electrical Engineering from Tufts University.

Mr. Connolly resides in Tyngsboro with his wife JoAnne, and they have two children, Jessica and Joy.

Dr. George S. Elias, Ed.D, C.R.C.

Dr. George S. Elias retired this year from a distinguished career at Assumption College which began in 1966. At Assumption he developed and directed the Institute for Social and Rehabilitation Services and the nationally accredited graduate program in rehabilitative counseling with specialties in Psychiatric Rehabilitation, Supported Employment and Vocational Evaluation.

He also developed and directed the approved program in School Guidance Counseling, the Graduate Program in Special Education, the Undergraduate program in Rehabilitative Services and the Region I Regional Rehabilitation Continuing Education Center. The Institute has produced more than 1,350 graduates from its various programs.

The Institute's affiliations, with more than seventy-five agencies and institutions, has provided field internships for many students. In most of these agencies, graduates of Assumption College now provide a core of professionals which includes counselors, supervisors, and directors.

Dr. Elias received his A.B. from Suffolk University, his Master's and Doctorate from Boston University. His consulting included the Department of Defense, where he served as chairman of the committee which surveyed development opportunities in the military with accompanying guidance and counseling services. He also participated in a project designed to improve the basic education skills of service personnel. At the Department of Labor, he assisted in developing evaluation systems for the Bureau of Employment Security which enabled DES to comply with Equal Employment Opportunity Commission employment practices. He also consulted with the Equal Employment Opportunity Commission on Business and Industry.

He served as Chairman of the Planning Committee for the National Conference for Family Members of Persons with Disabilities for the National Council for Disabilities. He is a former member of the Massachusetts Board of Registration for Psychologists, the Worcester Area Mental Health Association, where he served as President for two years, was a representative to the Council on Rehabilitation Education (CORE), was on the CORE Commission and on the Commission of Standards and Accreditation.

Dr. Elias' memberships include the Council for Exceptional Children, where he was on the Council of Administration and Special Education, the National Rehabilitation Association, the National Rehabilitation Counselor Association and the Massachusetts Rehabilitation Counselor Association. He was also a member of the American Association for Counseling and Development, and the National Vocational Guidance Association. As a member of the President's Committee on Employment of Persons with Disabilities, he was on the Employment Preparation Committee.

Dr. Elias is author of *Know Yourself*, a guidance textbook for secondary schools and *Joint Planning of Rehabilitation Services in Model City Programs*. Dr. Elias developed and coordinated counseling services for the Devereux Foundation, a group of residential treatment centers, was an Associate Professor and Director of the College Counseling Service at Springfield College and served as Director of the National Defense Education Act Counseling and Guidance Institutes. He also worked in several public school systems.

He and his wife Elizabeth have two children, a daughter, Nora, and a son, Louis.

Dr. Joseph H. Hagan

Dr. Joseph H. Hagan, fourteenth President of Assumption College, guided the school for twenty years. During his tenure, the longest of any Assumption College President, he established the Center for Continuing Education, established the French Institute, Beck Institute for Cognitive Studies and the Institute for the Study of the Magisterial Teaching of the Church. It was with his recommendation that the Board of Trustees adopted new curriculum offerings in management, accounting, computer science and communications.

President Emeritus Hagan submitted a balanced budget with revenues exceeding expenditures in every year since assuming the presidency. He oversaw an operating budget that grew from \$7.5 million in 1978 to more than \$37 million in 1997. Despite a \$35 million growth in capital assets, he limited long-term debt to \$13.5 million.

Ten new buildings were constructed during his presidency, and the construction of the eleventh building is underway. He led the development of a technologically up-to-date campus, including most recently the complete wiring of the campus for video and data transmission. The College, during his tenure, also completed major renovations to Taylor Dining Hall, La Maison Française and Founders Hall. Overall, \$35 million was spent on eleven major projects, and the physical plant is currently valued at more than \$70 million.

Three major multimillion dollar capital campaigns were completed by Dr. Hagan. He brought the endowment of the College from less than \$1 million to more than \$25 million.

He established the College's reputation as a community-minded institution. He established the Reach Out Center for student volunteer activities and provided space and administrative support to the Worcester Municipal Research Bureau and sponsored the Worcester Institute for Senior Education. He served as a board member or chair of numerous local civic, charitable, and religious organizations. He established partnerships with local public schools.

Six honorary degrees have been awarded to Dr. Hagan. He is a Knight of Obedience of the Order of Malta, a Knight Grand Cross of the Order of St. Gregory the Great, a Knight of the Holy Sepulchre, a Knight Commander of the Order of Sts. Maurice and Lazarus, a Knight Grand Cross *Jure Sanguinis* of the Sacred Military Constantinian Order of St. George and a fourth degree Knight of the Knights of Columbus. He is a Gentleman-in-Waiting to Pope John Paul II.

The Worcester Area Chamber of Commerce recognized him in 1988 for ten years of exemplary service to Assumption College and the Worcester community. The Republic of France awarded him the distinction of Commander of the Academic Palms in 1989. In 1992, he was named by President Bush to be a member of the National Council on the Humanities and was confirmed by the United States Senate.

He received the Providence College Alumni Award for distinguished service to education in 1986. In 1992, he received the Diamond Jubilee Award from Providence College. In 1993, on the occasion of his fifteenth anniversary as President of Assumption College, the Board of Trustees named the College's campus center the Hagan Campus Center in honor of his and his wife's long service to the College. The Assumption College Alumni Association also named him an honorary alumnus in that year.

Dr. Hagan graduated from Providence College with honors and attended Boston University, where he received his Master's degree. He attended Harvard University Institute of Educational Management and received his Doctorate from the Graduate Theological Foundation.

Prior to Assumption College, he was Legislative Assistant in the U.S. House of Representatives, Staff Assistant to the President's Committee on Juvenile Delinquency, Special Assistant to the U.S. Office of Economic Opportunity, Director of Planning, Development, and Federal Relations at Bryant College, Vice President of Bryant College and Assistant to the Chairman of the National Endowment for the Humanities.

He is married to Patrice O'Malley Hagan and their son, Kevin O'Malley Hagan, is a recent graduate of Providence College.

Patrice O'Malley Hagan

Mrs. Patrice O'Malley Hagan is a woman of many interests. During her twenty years as Assumption College's first lady, she made everyone she met on campus feel welcome. In the greater Worcester community, she was involved in a myriad of efforts.

She is a member of the Institutional Review Board of St. Vincent Hospital/Fallon, and the Board of Directors of Pernet Family Health Services, where she chaired the capital campaign and also served on the executive board. She is a Board member for Family Health and Social Services, where she has served on the Finance Committee, and is a member of Faith, Inc., where she served as treasurer.

Mrs. Hagan was a member of the City Manager's Cable TV Advisory Committee from 1984-1995 and is a member of the Board of WICN Radio. She served as President of the Board of WICN from 1993-95 and is a member of the Executive Committee.

She is a Corporator of the Worcester Art Museum, where she is a Docent and a member of the Education Committee. For Preservation Worcester, she has served as Vice President, President and is Chairman of the Urban Design Committee. She is a member of the City Hall Restoration Committee and was a volunteer at the American Antiquarian Society from 1989-1994.

Mrs. Hagan is an Honorary Alumna of Assumption College. In 1993, she was awarded the "Pro Ecclesia et Pontifice" medal by Pope John Paul II. She is also recipient of the Knollwood Award for Community Service by Notre Dame High School.

She is a member of the Evaluation and Monitoring Committee of the Greater Worcester Community Foundation and is also a Corporator. She is a member of the Bishop's Fund Advisory Board and is Chairman of the Board of *The Catholic Free Press*. She is also a Board member of Rivier College.

Her church activities include Eucharist Minister at Immaculate Conception Church and a Dame of Malta, where she was a member of the Medical Advisory Committee and was Communication Chairman of the Boston Region Advisory Board in 1994. She is a member of the Equestrian Order of the Holy Sepulchre and the Ministry Foundation for the Little Sisters of the Assumption. She was a volunteer in 1995 for the Pontifical Council on Social Communication, Vatican City.

Mrs. Hagan taught a course through Assumption's Continuing Education Department in public relations. She was a public relations director for several organizations in the Washington, D.C. area before coming to Assumption. From 1984-85, she was the Community Relations Director for the Worcester Area System for Affordable Health Care at Clark University.

She has an Associate of Art's Degree from Marymount College and a B.A. in History from Barat College of the Sacred Heart. She received her Graduate Certificate in Public Relations from American University and her M.B.A. from Anna Maria College.

She is married to Dr. Joseph H. Hagan and their son, Kevin O'Malley Hagan, is a recent graduate of Providence College.

Bishop Robert E. Mulvee

Bishop Robert E. Mulvee, ordinary of the Diocese of Providence, R.I., has served the Church with distinction for many years, beginning with his ordination in 1957 as a priest in the Diocese of Manchester, New Hampshire.

Following ordination, he served as Chaplain at St. Charles Orphanage in Rochester and did parish work at St. Leo Parish in Gonic and St. Peter Parish in Farmington, all in New Hampshire. He was associate pastor of St. Catherine Parish from 1958 to 1960 and was then assigned as associate pastor of St. Joseph's Cathedral in Manchester.

He was assigned to graduate work at North American College in Rome and in 1964 completed his Doctorate in Canon Law at the Pontifical Lateran University in Rome. That same year he received a Master's in Religious Education from the University of Louvain in Belgium.

Bishop Ernest J. Primeau then appointed him Assistant Chancellor of the Manchester Diocese, where he also served in several diocesan posts including judge and notary of the Diocesan Tribunal, a Diocesan Consulter, the Bishop's Master of Ceremonies and the Secretary to the Diocesan Synod.

Fr. Mulvee served as a member of the Diocesan Vocations Commission, the Diocesan Liturgical Commission, the Diocesan Pastoral Commission and the Building and Real Estate Board. During these years he did parish ministry work at St. Joseph's Cathedral, St. Patrick Mission Church and Hampton Beach, and St. Catherine Parish in Portsmouth.

In 1966, Fr. Mulvee was named a Papal Chamberlain with the title of Reverend Monsignor by Pope Paul VI, and in 1970 Msgr. Mulvee was named Prelate of Honor by Pope Paul VI.

Msgr. Mulvee was named Chancellor of the Diocese of Manchester in 1972 and first Auxiliary Bishop of Manchester in 1977, followed by his ordination to the Episcopacy later that year. As Auxiliary Bishop, he served as Vicar General of the Diocese of Manchester, and Chairman of the Diocesan Personnel Board.

Bishop Mulvee served from 1978 to 1982 as a member of the Bishop's National Advisory Council. He served eight years on the Board of Bishops for the American College in Louvain and also on the Committee for the nomination of Officers for the National Conference of Catholic Bishops (NCCB). He served as an elected member from Region I on the Administrative Board of the NCCB and the United States Catholic Conference (USCC). He was Vice-Chairman and Chairman of the New England Council of Church leaders, and Ecumenical Council of Christian Denominational Executives in New England, and served as one of the Judiciary Executives on the Christian Council for Delaware and the Eastern Shore of Maryland.

In 1985, Bishop Mulvee was appointed the seventh Bishop of the Diocese of Wilmington, Delaware. That year he was also appointed a member of the National Conference of Catholic Bishops, and the following year he was named a member of the Joint Committee of Orthodox and Roman Catholic Bishops.

He was appointed Coadjutor Bishop of Providence in 1995.

Dr. Claire Quintal

Dr. Claire Quintal received her Doctorate from the University of Paris, mention très honorable. She received her Master's degree from the University of Montreal, *magna cum laude*, and her A.B., *summa cum laude*, from Anna Maria College.

Dr. Quintal has an extensive academic vitae. But she is best known, perhaps, for her contributions to the promotion of Franco-American culture. She has received an array of honors for her efforts in this field including, most notably, *L'Ordre national du mérite* conferred on her by the Ambassador of France last year.

Other honors bestowed upon Dr. Quintal include the Congressionally sponsored Ellis Island Medal of Honor, Massachusetts Foreign Language Teachers' Association Distinguished Service Award, Richelieu International Personality of the Year Award, the Rhode Island Heritage Commission's Franco-American of the Year Award. She was a delegate to the *Assises de la Francophonie* in Paris and was selected to attend the first four International Francophone Summit Conferences. She was the first recipient of the Outstanding Alumna Award from the Anna Maria College Alumnae Association, was elevated to the rank of *Chevalier de la Légion d'honneur* by the French Government and received an Honorary Doctorate from St. Michael's College, Vermont. She was awarded the Assumption College President's Medal.

Dr. Quintal is the Founding Directress of the French Institute at Assumption College. She is a Professor Emerita and was a Professor of French at Assumption College from 1968-1995. She also served as Dean of the Graduate School and Director of Summer Sessions at Assumption. She was an Affiliate Professor of French Civilization at Clark University, a Professor at the American College in Paris and was a guest lecturer at Assumption in the Graduate Summer School of French.

She spent ten years in Paris doing research in comparative literature and medieval history after completing the *Doctorat d'université* and enrolled in a year-long series of courses designed for professors of French as a second language.

She was editor of the proceedings of the second through eleventh Annual Conferences of the French Institute. She is also translator and editor of *Steeple and Smokestacks: a Collection of Essays on the Franco-American Experience in New England* and *The Beginnings of the Franco-American Colony in Woonsocket, Rhode Island*. She is author of four books and co-author of three. She translated into English a biography of the foundress of the Felician Sisters.

She was author of "The French Heritage Trail," two flyers, one in English the other in French, on the contributions of the French to the city of Boston. It was published by the Massachusetts Convention Center Authority and distributed by them through the Massachusetts Office of Tourism.

Dr. Quintal is working on a historical novel on the emigration from Canada to the mill towns of New England, and a reader on Franco-American life for high school students of French. She is also preparing an anthology of Franco-American literature, written in French, to serve as a textbook for Franco-American studies at the college level. Her many articles have been printed in a wide variety of publications.

Her participation in cultural and community activities include the Massachusetts and Canadian French Cultural Exchange Commission, the Board of *Union Saint-Jean-Baptiste*, the *Conseil de la vie française en Amérique*, *Comité d'honneur of the Rassemblement des peuples francophones*, and many more. She has served as president of the *Fédération Féminine Franco-Américaine*, *Comité de Vie Franco-Américaine* and *Alliance française*, to name a few. She was a consultant to the Harvard Encyclopedia of American Ethnic Groups and was Vice Chair of the Massachusetts Coordinating Committee for International Women's Year, 1977.

She organized and administered four week-long seminars on American culture and society for African francophone university professors of history and geography in collaboration with the United States Information Agency, and many other workshops and seminars. She has lectured widely on Franco-American culture.

Barclay Wood

Barclay Wood was educated at Yale University and the New England Conservatory of Music, where he graduated with honors. He holds a Master of Music in organ performance and was elected to Pi Kappa Lambda National Honorary Society for Musicians.

For nearly forty years, he has been serving as organist and choirmaster for the First Baptist Church, Worcester. Previously, he was successor to the late E. Power Biggs as organist and choirmaster of the Harvard Church in Brookline. He also has served as associate organist of the Cathedral of St. Paul, Boston, and as organist and choirmaster at All Saints Church, Worcester.

He has been on the music faculties of a number of universities and colleges, including Andover Newton Theological School, Brown University, Atlantic Union College, Worcester Polytechnic Institute, Assumption College, Clark University and the University of Massachusetts, Amherst. A number of his students have won significant organ playing competitions, and/or have gone on to earn national reputations.

Many churches have sought Mr. Wood's professional assistance in designing new pipe organs. As a consultant, Mr. Wood worked with several organ builders, nationally and internationally. Most recently, in Worcester, he has been closely associated with the rebuilding and enlargement of the Chabot Family Memorial Pipe Organ in Assumption's Chapel of the Holy Spirit, as well as with the design and installation of the J. W. Walker pipe organ at Our Lady of the Angels Church, Worcester.

He is a past dean of the Worcester Chapter, American Guild of Organists and has served on a number of boards and committees, including the Worcester Music Festival (Young Artist Award Committee), Arts Council of Worcester, and the Worcester Area Council of Churches' Fine Arts Commission. He has been an adjudicator in major competitions for organists, and was a general program chairman for the convention of the combined American Guild of Organists and Organ Historical Society in Worcester in 1983. A member of the organ restoration committee for the famous E. and G.G. Hook Organ in Mechanics Hall, Worcester, he was the first featured performer on the restored organ, and played the Poulenc Organ Concerto with the Worcester Orchestra at the instrument's rededication concert in 1982.

Mr. Wood is an active concert artist and has presented organ recitals or master classes at Yale, Harvard, MIT, New England Conservatory, Worcester Art Museum, Mechanics Hall, Wesleyan University, St. Michael's College, VT, University of Delaware, Ithaca College, NY, University of Massachusetts, Amherst, Assumption College, City Hall Auditorium, Portland, ME, Methuen Memorial Music Hall, John Hays Hammond Museum, Gloucester, Holy Cross College, and Mount Holyoke College. He was featured performer for several conventions of the American Guild of Organists, as well as for churches and American Guild of Organists chapters throughout the eastern United States.

Undergraduates Receiving Academic Honors

Carrie A. Baldelli	Management
Andrew J. Clark	English
Melissa M. Coache	Biotechnology
Gretchen A. Crowley	Elementary Education
Karen M. Doyle	Biology
Karen M. Doyle	Sociology
Anne L. Fitzgerald	History
Edward J. Gaffney	Environmental Science
Tracy L. Heffernan	Computer Science
Jonathan H. Jankowski	Mathematics
Amy M. King	Marketing
Jason R. McCall	Psychology
Derek M. Mohamed	Economics
Julie A. Morris	Foreign Languages
Mark J. Mamuszka	Theology
Kimberly A. Nelson	Politics
Wendy N. Pelletier	Secondary Education
Allyson R. Rockwell	Social & Rehabilitation Services
Steven R. Rust	Foreign Affairs
Lynn R. Schubert	Philosophy
Allison J. Skowron	Spanish
Allison J. Skowron	International Business
Cathleen M. Sullivan	French
Jennifer K. Thomson	Accounting
Joseph R. Tomaski	Music
Thomas E. Wales	Chemistry

The following graduates of The Center for Continuing and Professional Education are members of the Assumption College Chapter of Alpha Sigma Lambda, the national honor society for non-traditional students:

Beverly J. Beahn-Fucile	Bachelor of Liberal Studies
Nancy A. Buckingham	Associate of Liberal Studies
Nicholas M. Cara Donna	Bachelor of Science in Liberal Studies
Linda M. Collins	Bachelor of Business Administration
Sharon L. Corricelli	Associate of Liberal Studies
Karen R. Frykberg	Bachelor of Science in Liberal Studies
Cynthia A. Kingdon	Bachelor of Science in Liberal Studies
Elaine M. Latino	Bachelor of Science in Liberal Studies
Lorry A. LaVigne	Bachelor of Business Administration
Mary R. Mahan	Associate of Liberal Studies
Susan E. Murphy	Associate of Liberal Studies
Linda E. Perkins	Bachelor of Science in Liberal Studies
Judith A. Philip	Bachelor of Science in Liberal Studies
Claire B. Roy	Bachelor of Liberal Studies
Donna L. Sinnery	Bachelor of Business Administration

Outstanding Service Award, 1998:

Claire B. Roy



Medallion of the President of Assumption College

The shield on the seal is divided into four sections by the Cross, symbol of Christ, denoting the College as a Catholic Institution. It is a "fleurdelisée" Cross, a reminder that the College is located in the Diocese of Worcester, which also has this style Cross on its coat of arms. On the Cross is an open book, representing the Gospel, which is the foundation of teaching at a Catholic institution, and also representing the Liberal Arts, which seek to lead the student to knowledge and wisdom. On the book are the letters ART (Adveniat Regnum Tuum or Thy Kingdom Come) a phrase from the Lord's Prayer which is the motto of the Assumptionists who founded the College in 1904. In the upper left quarter is the monogram of Mary with a crown above it, a symbol of the Blessed Virgin Mary in her Assumption. In the lower right quarter is the fleur-de-lis, a reminder of the French origins of the founding religious order.

The Medallion is suspended by a chain the links of which consist of the letter "M" with a crown representing the Queenship of the Blessed Virgin Mary, Our Lady of the Assumption, patroness of the College.

This presidential medallion was designed, created, and given as a gift to Assumption College by John Cavanagh of Greenville, Rhode Island.

The Assumption College Mace

In medieval times, a mace was a spiked war club, an effective weapon in combat. Later it became a symbol of authority, and in the context of an academic community, it has often signified teaching authority.

At Assumption College, education promotes self-discovery; but the true discovery of self must first take into account one's nature and purpose. The symbolism of the mace reflects the simple but essential elements that make for a full and responsible consideration of self, within the broader context in which there can be a full blossoming of the individual.

An education at Assumption nurtures the growth of specific habits or, more precisely, virtues. These include the Intellectual Virtues, which guide the student to Truth; the Moral Virtues (prudence, justice, fortitude, and moderation), which enable a person to lead a good life; and, most important of all, as Saint Paul and Saint Augustine would say, the Theological Virtues (faith, hope, and charity) which lead the Christian to ultimate happiness. The lettering in Latin on the three bands of the sterling node states simply the thrust of these essential Virtues: *Intelligentia Adducitur Veritatem; Voluntas Adducitur Bonum; Cor Adducitur Amorem*. The staff could be considered a "lignum vitae" (tree of life), from which the Virtues spring. The three upper branches of ebony and gold represent the Virtues and their impact upon everyone at the College, symbolized by the multifaceted fluorite stone.

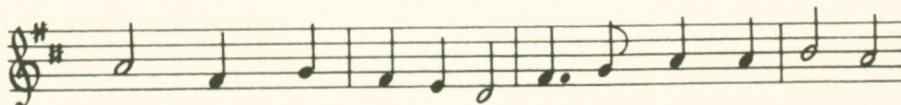
At Assumption, it is the community's shared vision that fosters a full flowering of the individual. The three blossoms of gold from the blue fluorite represent the individual coming to full maturity in Christ, in accord with the College's motto "Until Christ be formed in you."

The Assumption College Mace was conceived, designed, created and given as a gift to Assumption College by Paul A. Cavanagh of Greenville, Rhode Island.

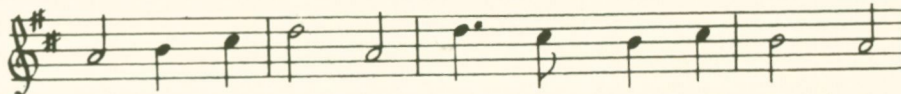


Assumption College Alma Mater

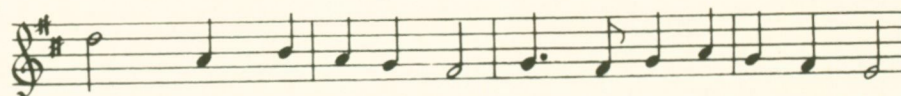
Lyrics: Beverly Shaw Johnson (1985) Melody: *Christe sanctorum* (Antiphone, Paris, 1681)



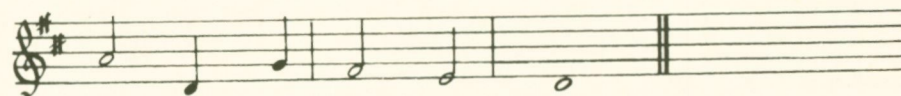
1. Pledge we our loy-al-ty to As-sump-tion Col-lege-
2. Our hearts will al-ways be with As-sump-tion Col-lege-



Whose de-di-ca-tion in pur-suit of know-ledge
Her ban-ners wa-ving with out-stand-ing cou-ra-ge



With-stands the test of time, aids us in our on-ward climb
Call for fi-de-li-ty and protect a spi-rit free



In search of truth and light.
Long live the blue and white!

*Written upon the occasion of the 80th Anniversary
of the founding of Assumption College.*