

Washington University in St. Louis  
**Washington University Open Scholarship**

---

University Libraries Presentations

University Libraries

---

4-24-2015

# New Times, New Roles, New Structures

Trevor A Dawes

*Washington University in St Louis*

Follow this and additional works at: [https://openscholarship.wustl.edu/lib\\_present](https://openscholarship.wustl.edu/lib_present)



Part of the [Collection Development and Management Commons](#), [Scholarly Communication Commons](#), and the [Scholarly Publishing Commons](#)

---

## Recommended Citation

Dawes, Trevor A, "New Times, New Roles, New Structures" (2015). *University Libraries Presentations*. 11.  
[https://openscholarship.wustl.edu/lib\\_present/11](https://openscholarship.wustl.edu/lib_present/11)

This Presentation is brought to you for free and open access by the University Libraries at Washington University Open Scholarship. It has been accepted for inclusion in University Libraries Presentations by an authorized administrator of Washington University Open Scholarship. For more information, please contact [digital@wumail.wustl.edu](mailto:digital@wumail.wustl.edu).



# **New Times, New Roles, New Structures**

WAAL Conference

Trevor A. Dawes  
24 April 2015

# Rutgers Announcement

---

I want to take this opportunity to inform you of an important development in relation to the MLIS program. For students entering the program beginning Fall 2015, the Master of Library and Information Science (MLIS) degree will be changing its name to the Master of Information (M of I) degree. The set of courses currently offered for the MLIS also form the basis of the Master of Information, although we will be highlighting some plans of study with new concentration names.

# Rutgers Announcement

---

Accreditation). In addition, we will have a data science concentration for those seeking positions coordinating data collection, storage, and analysis; a strategic information management concentration for those who seek enterprise-level responsibilities for corporate or institutional information; and further down the track, an informatics and design concentration for information professionals seeking careers in analyzing, designing, building and managing information and communication technologies in support of individual and social access to and management of information in a wide variety of occupational and personal contexts. All of these concentrations will draw on the range of courses we currently provide for the MLIS.

# Challenges to Libraries

---

- Defining Customer Service Metrics
  - Impact of Technology
  - Statistics – What to Measure
  - Patron Privacy
- 
- Brown, Charles H. and Humphrey Bousfield. Circulation Work in College and University Libraries. Chicago: American Library Association, **1933**.

# Other Challenges

---

- Accountability and Assessment
- Library Spaces
- Staff Skills Development
- Declining Budgets



# 2015 Horizon Report Trends

---

- Bring Your Own Device
- Flipped Classroom
- Makerspaces
- Wearable Technology
- Adaptive Learning Technologies
- The Internet of Things

# 2015 ACRL Environmental Scan

---

- Library Collections and Acquisitions
- Research Data Services
- Discovery Services
- Library Facilities
- Scholarly Communication
- Library Impact on Student Success



# ARL New Roles for New Times

---

## New Roles for New Times:

### Digital Curation for Preservation

March 2011

Tyler Walters  
Katherine Skinner

# ARL New Roles for New Times

---

## New Roles for New Times:

### Research Library Services for Graduate Students

December 2012

Lucinda Covert-Vail  
Scott Collard

# ARL New Roles for New Times

---

## New Roles for New Times:

### Transforming Liaison Roles in Research Libraries

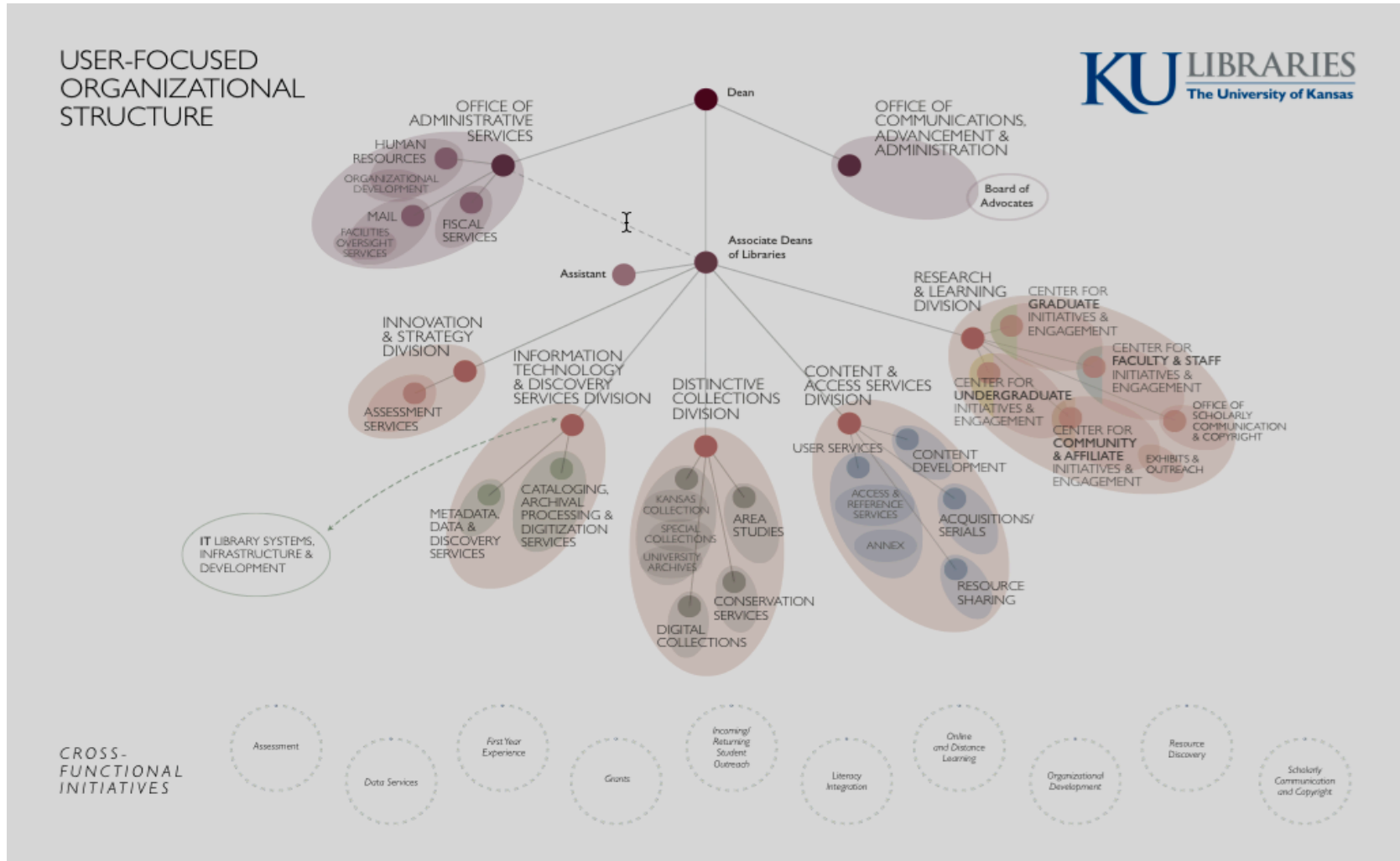
August 2013

Janice M. Jaguszewski  
Karen Williams

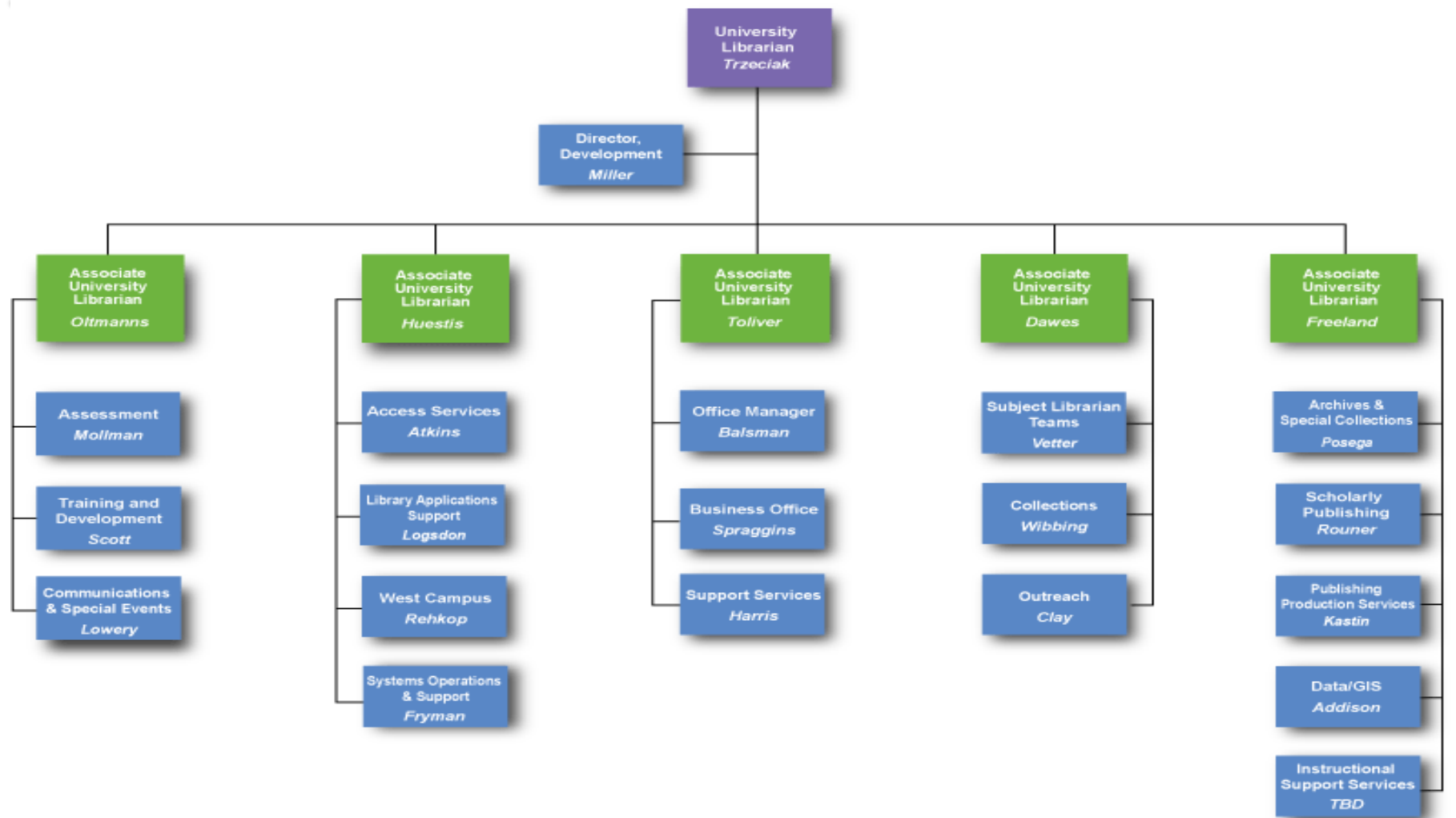
# New Roles for Librarians



# University of Kansas Libraries



# Washington University Libraries (2013)



# WUSTL Strategic Plan

---

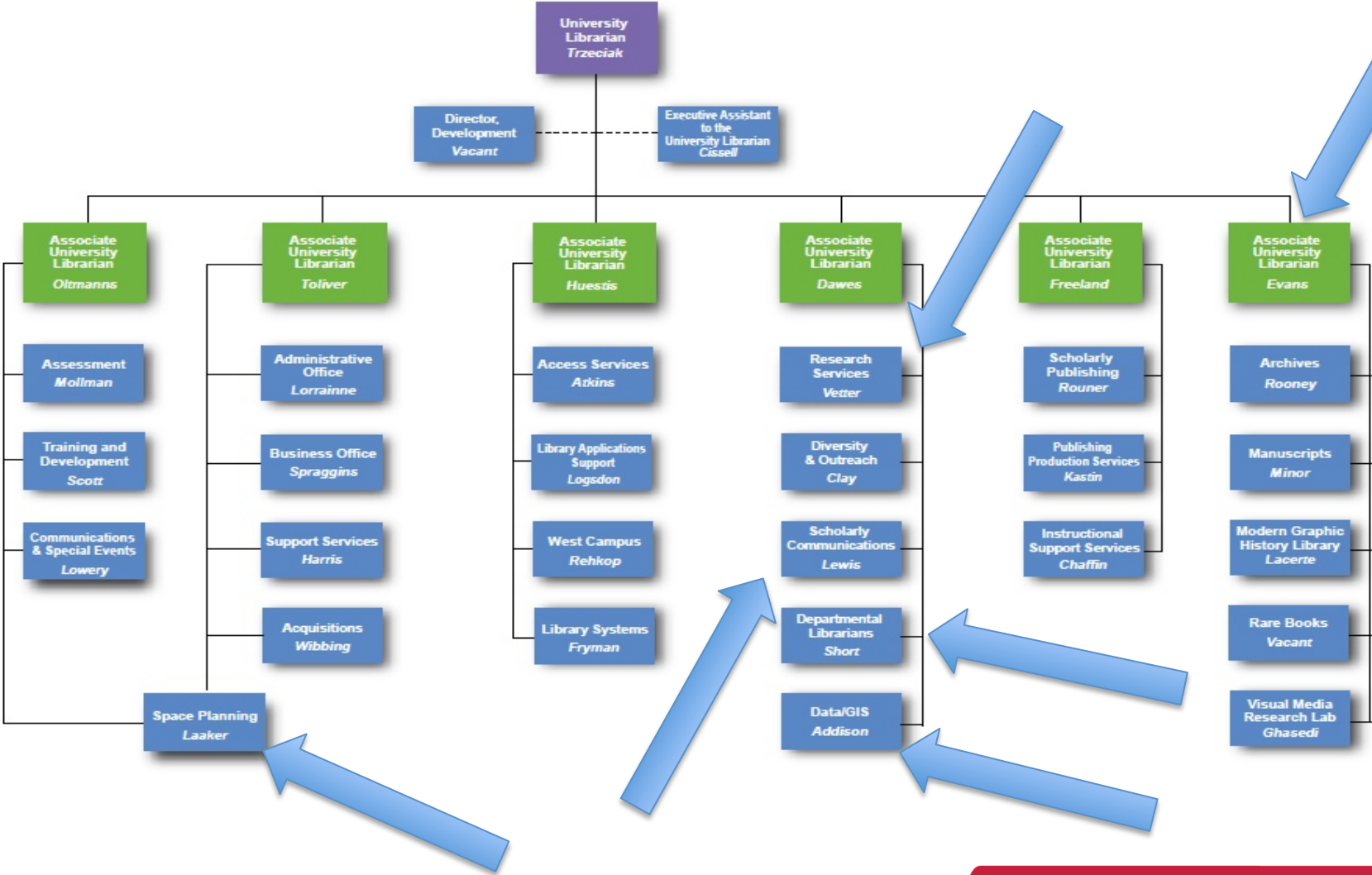
## Washington University Libraries' Vision:

The Libraries inspire creative exploration, cultivate intellectual growth, and enrich our community's scholarly pursuits.

## 5 Strategic Directions:

1. Retain, recruit, and develop an expert, passionate, and diverse staff.
2. Leverage innovative technology and collaborative partnerships to advance exceptional scholarship.
3. Facilitate seamless access to robust and distinctive collections.
4. Create a flexible learning environment through adaptable spaces and customizable instruction.
5. Be a premier research library.

# Washington University Libraries (2014)





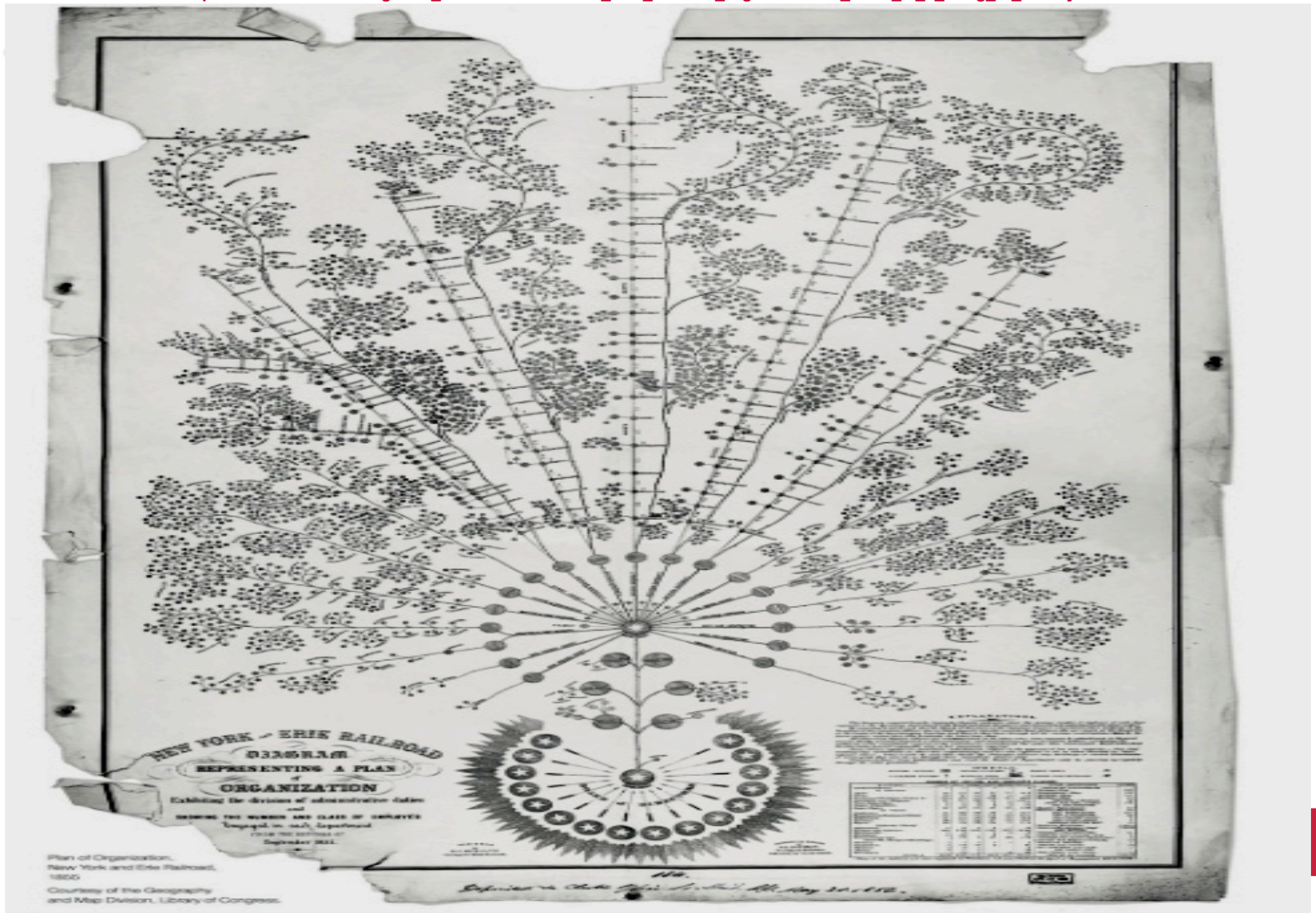
# Recent Positions at WUSTL

---

- Copyright and Digital Access Librarian
- Digital Archivist
- Head of Publishing Production Services
- Scholarly Publishing Director
- Digital Infrastructure Librarian
- Film Preservationist
- GIS Programmer
- Data Specialist

# First Modern Organizational Chart?

[http://www.slate.com/blogs/the\\_vault/2014/02/05/the\\_first\\_modern\\_organizational\\_chart\\_is\\_a\\_thing\\_of\\_beauty.html](http://www.slate.com/blogs/the_vault/2014/02/05/the_first_modern_organizational_chart_is_a_thing_of_beauty.html)



# Needed Librarian Skills

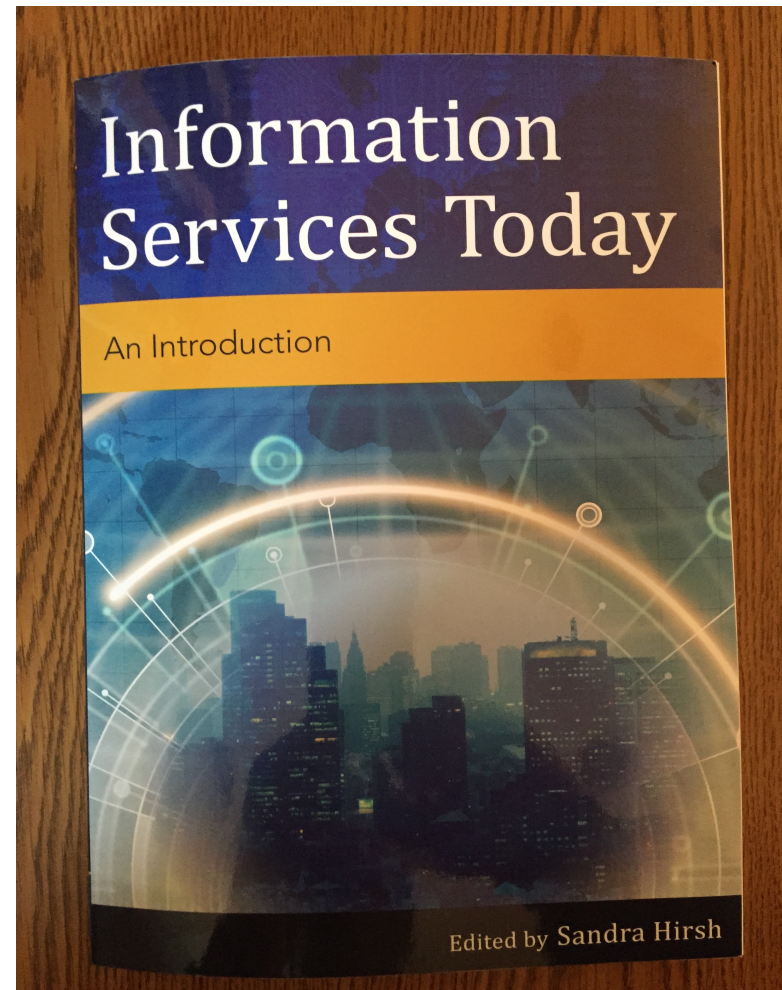
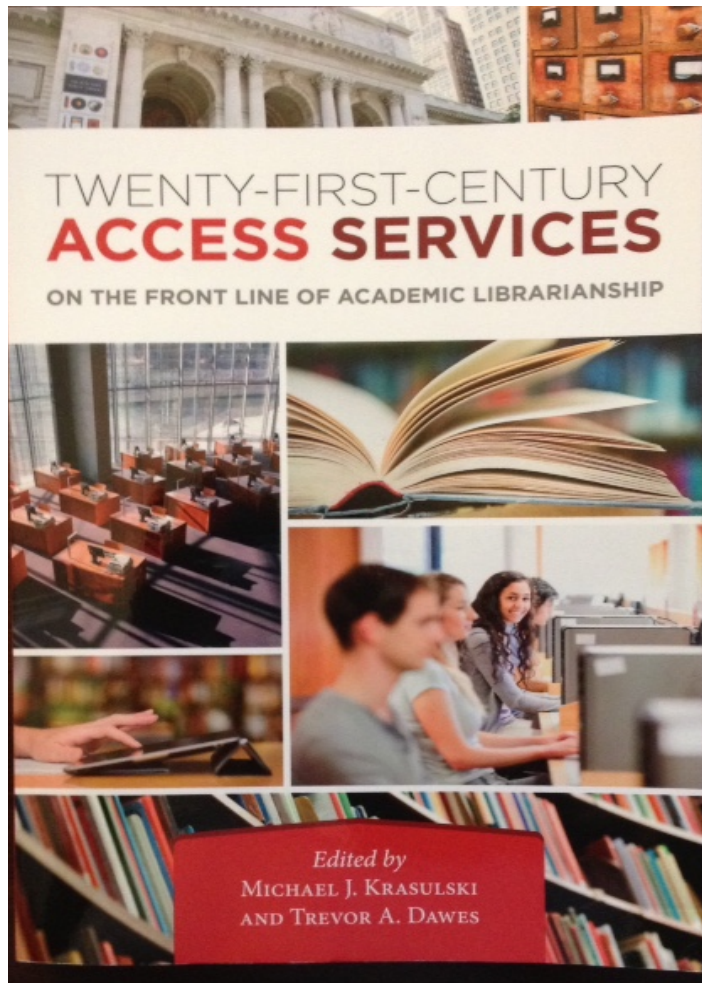
---

- Project Management
- Instructional Design / Instructional Technology
- Digital Information Management
- Data Analytics / Data Visualization
- Technological / Programming
- Assessment
- Communications and Marketing
- Others.....



# Libraries and Info Services Today

---



**THANK YOU**

**GRACIAS**  
**ARIGATO**  
**SHUKURIA**

**TASHAKKUR ATU**  
**YAQHANYELAY**  
**SUKSAMA**  
**EKHMET**

**MEHRBANI**  
**GRAZIE**  
**PALDIES**

**BOLZIN**  
**MERCI**

**DANKSCHEEN**  
**JUSPAXAR**  
**BIYAN**  
**SHUKRIA**

**TINGKI**  
**HATUR GU**  
**MINMONCHAR**

**SPASSIBO**  
**SHACHALHUYA**  
**NUHUN**  
**CHALTU**  
**WABEEJA**  
**MAITEKA**  
**YUSPAGARATAM**  
**HUI**  
**UNALCHEESH**  
**ATTO**  
**ANHA**  
**MEERS**  
**SPASIBO**  
**DENKAUJA**  
**NEHACHALHYA**  
**SIKOMO**  
**MAKETAI**  
**BAHWA**  
**TAVTAPUCHI**  
**MEDAWAGSE**  
**GOZAIMASHITA**  
**AGUYJE**  
**FAKAAUE**  
**SAHCO**  
**KOMAPSUMNIDA**  
**MAAKE**  
**LAH**  
**MERASTAWHY**  
**GAEJTHO**  
**SAHCO**



---

Trevor A. Dawes  
[tadawes@wustl.edu](mailto:tadawes@wustl.edu)  
@tadawes