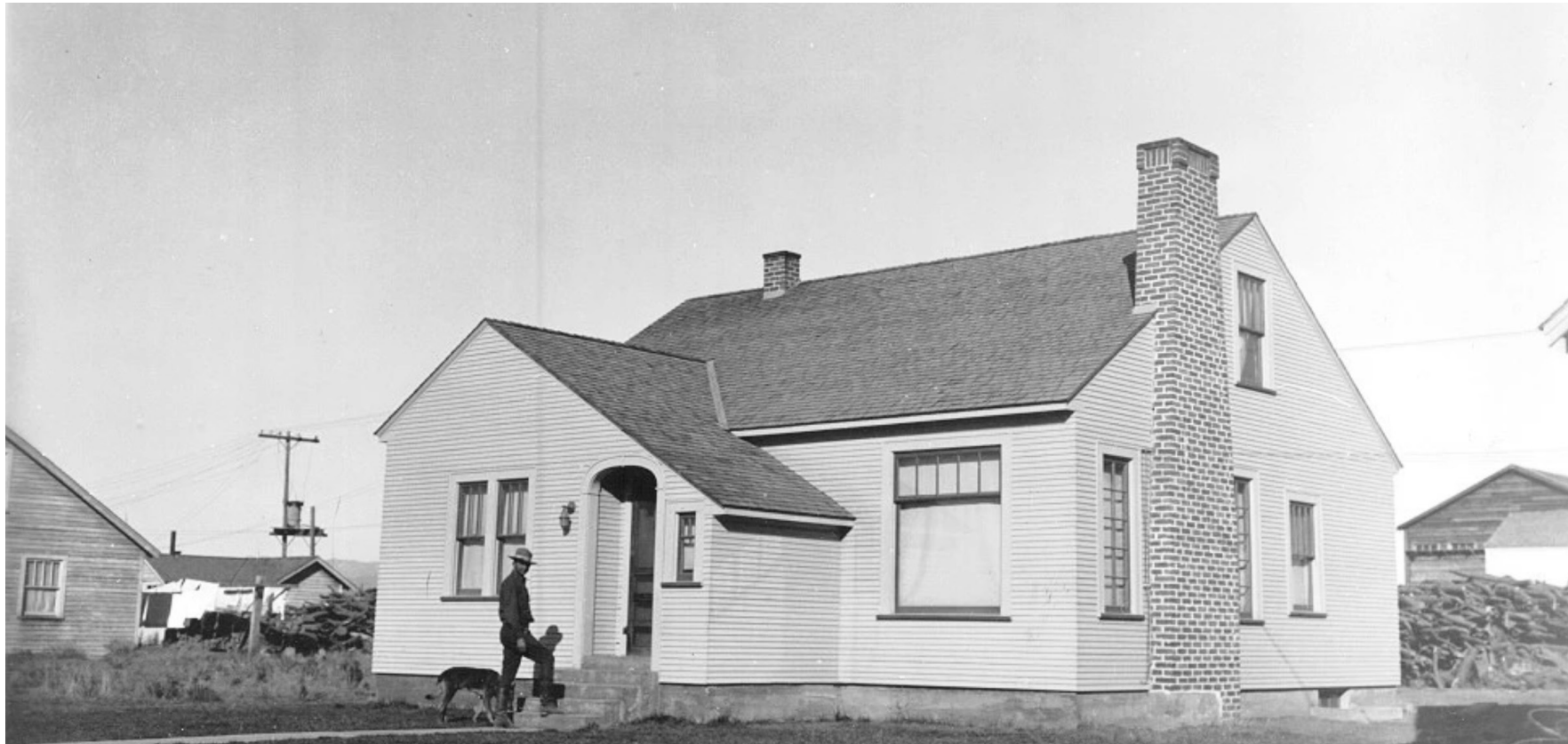


# Seneca House

case study  
By Zhuoying Chen

Location: Seneca, Oregon



Architect: N/A

Owner: N/A

Year of completion: N/A

Climate: Dsc (Continental Subarctic Climate)

Material of interest: Wood

Application: Facade

### Properties of material:

Seneca began growing in the 1920s as a company town for the Edward Hines Lumber Company, large-scale Ponderosa Pine logs were shipped to the Hines from Seneca and the surrounding National Forest. Wood is readily available and plentiful. Thus, it is a cheap material there.

### Sources:

<https://www.senecaoregon.com/>

