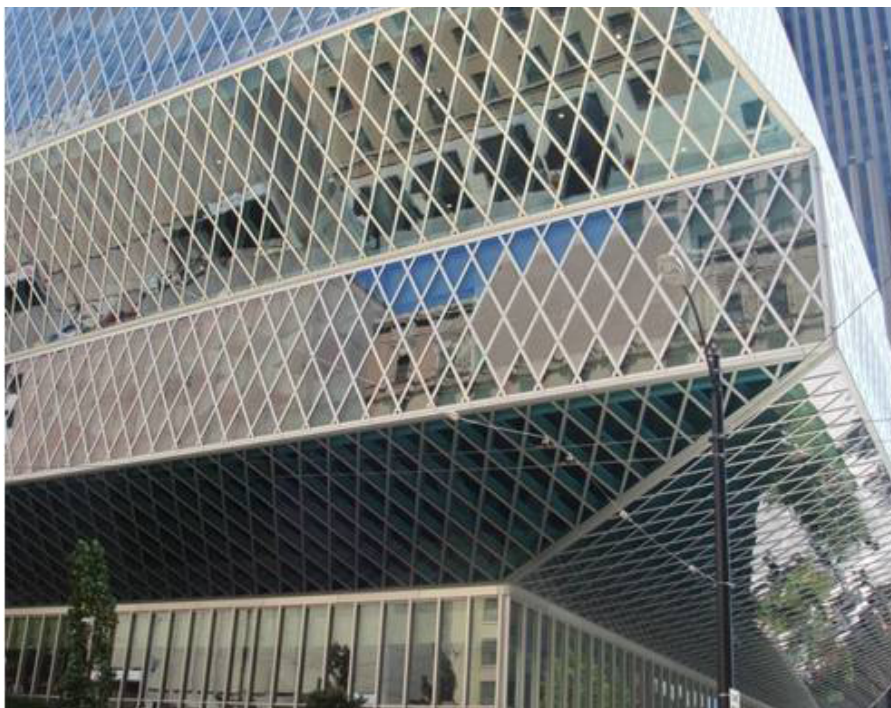


# Seattle Central Library

case study  
By Alex Chow

Location: Seattle, WA



**Architect:** Rem Koolhaas, Office of Metropolitan Architecture, LMN Architects

**Owner:** Seattle Public Library

**Year of completion:** 2004

**Climate:** Mediterranean Climate

**Material of interest:** Glass

**Application:** Curtainwall

**Properties of material:** Insulating glass with metal interlayer

**Material used:** OKATECH with expanded metal mesh

**Manufacturer/ fabricator:**

Manufacturer: Okalux

Fabricator: Seele

**Sources:**

architect website: [www.oma.nl/](http://www.oma.nl/)

manufacturer website: [www.okalux.de](http://www.okalux.de)

fabricator website: [www.seele-online.com](http://www.seele-online.com)