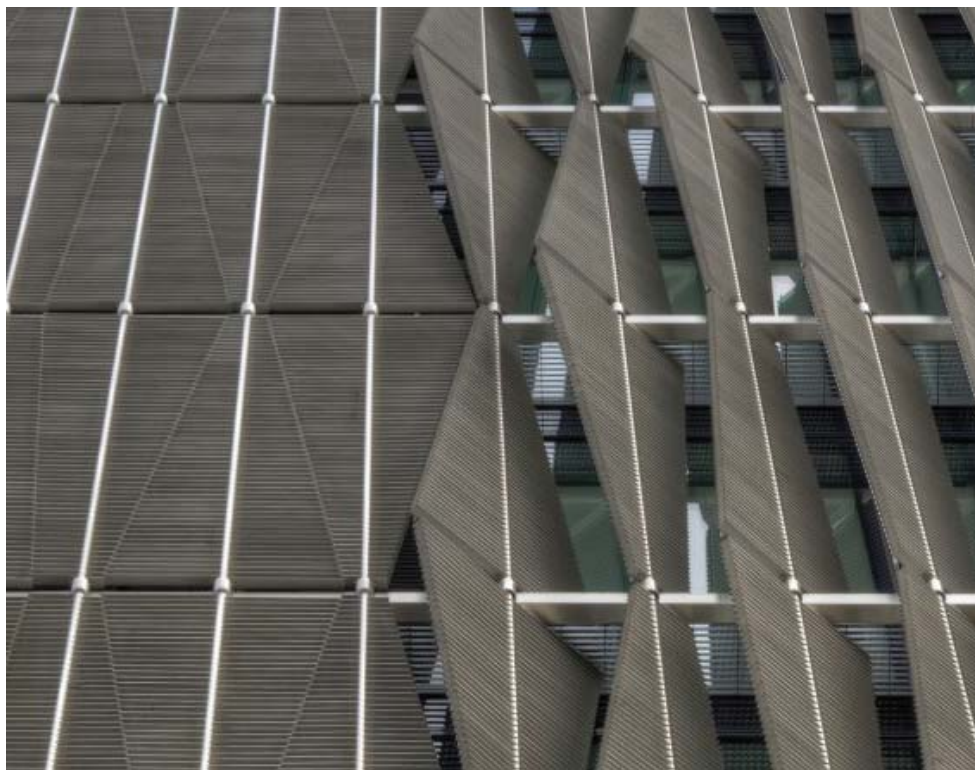
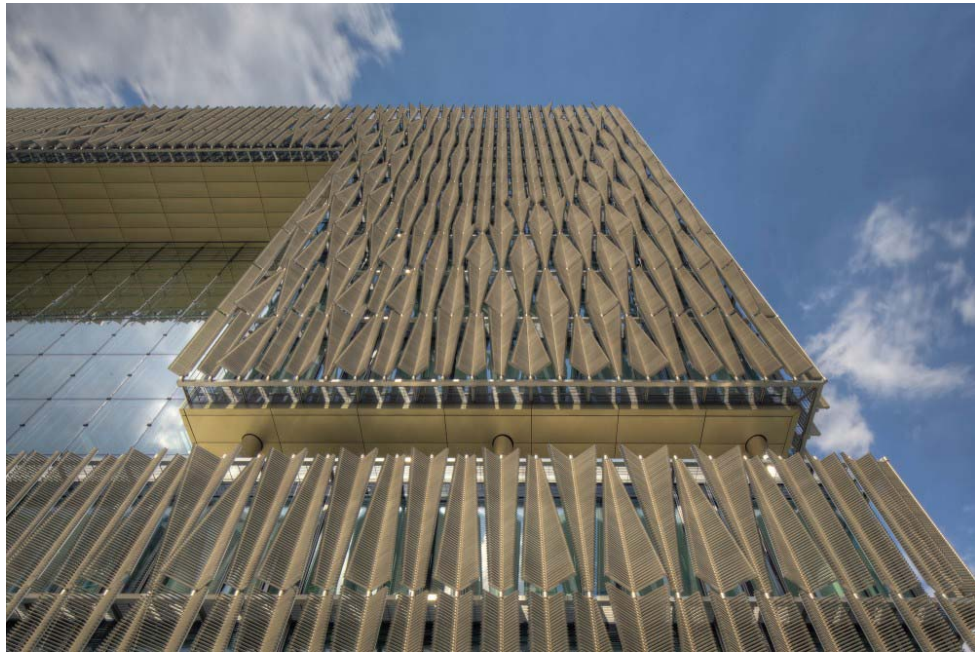


Q1 Building, ThyssenKrupp Quarter

case study
By Emily Rosa

Essen, Germany



Architect: JSWD Architekten + Chaix & Morel et Associés

Owner: ThyssenKrupp AG

Year of completion: 2010

Climate: Marine West Coast Climate

Material of interest: Stainless Steel

Application: Exterior

Properties of material: 400,000 metal “feathers” are anchored into 3,150 routed stainless steel moveable stalks, which can be mechanically controlled to transform the façade to allow more or less light into the building. The 1,280 motorized elements can be closed to create a more solid enclosure, follow the position of the sun, or be entirely open to allow maximum solar exposure. The louver system directs natural light into interior spaces, reducing the need for electric lighting. It also keeps the glazed areas cool enough that the building does not require an air conditioning system.

Sources:

<http://www.archdaily.com/326747/>

<http://inhabitat.com/germanys-q1-building-boasts-a-dazzling-facade-of-400000-metal-feathers/q1-ed03/?extend=1>

<http://www.architectmagazine.com/projects/view/q1-building-thyssenkrupp-quarter/178/>