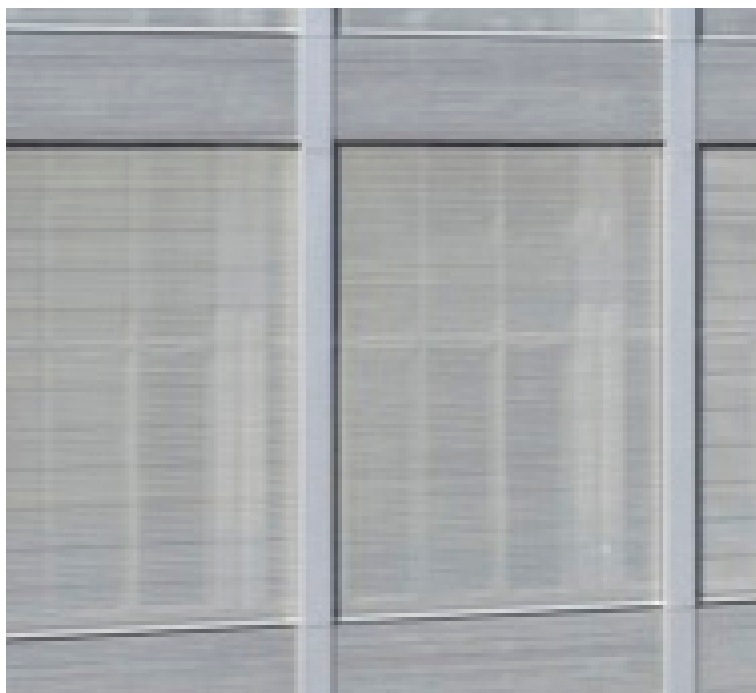


Metal Shutter Houses

case study
By Jina Kim

Location: New York, USA



Architect: Shigeru Ban Architects
+ Dean Maltz Architect

Owner: HEEA Development LLC

Year of completion: 2011

Climate: Humid Subtropical Climate

Material of interest: Metal

Application: Exterior facade

Properties of material: Movable facade serve as light-modulating privacy screen.

Sources:

<http://www.archdaily.com/153337/>

<http://www.shigerubanarchitects.com/>