

2006

# The California Land Conservation (Williamson) Act 2006 Status Report

California Department of Conservation

Follow this and additional works at: [http://digitalcommons.law.ggu.edu/caldocs\\_agencies](http://digitalcommons.law.ggu.edu/caldocs_agencies)



Part of the [Land Use Law Commons](#)

---

## Recommended Citation

California Department of Conservation, "The California Land Conservation (Williamson) Act 2006 Status Report" (2006). *California Agencies*. Paper 222.

[http://digitalcommons.law.ggu.edu/caldocs\\_agencies/222](http://digitalcommons.law.ggu.edu/caldocs_agencies/222)

This Committee Report is brought to you for free and open access by the California Documents at GGU Law Digital Commons. It has been accepted for inclusion in California Agencies by an authorized administrator of GGU Law Digital Commons. For more information, please contact [jfischer@ggu.edu](mailto:jfischer@ggu.edu).

# The California Land Conservation (Williamson) Act



STATE DEPOSITORY  
LAW LIBRARY

JAN 25 2007

GOLDEN GATE UNIVERSITY

## 2006 Status Report



KFC  
881.8  
.F37  
N561  
2006

**NON-CIRCULATING**

Arnold Schwarzenegger  
Governor  
State of California

Mike Chrisman  
Secretary for Resources  
The Resources Agency

Bridgett Luther  
Director  
Department of Conservation



California  
Land Conservation (Williamson) Act  
Status Report  
2006



Williamson Act Program  
California Department of Conservation

May 2006

DO NOT REMOVE FROM  
**LAW LIBRARY**  
GOLDEN GATE UNIVERSITY

# TABLE OF CONTENTS

INTRODUCTION.....	1	IV. COMPLIANCE AUDITS.....	19
I. ENROLLMENT SNAPSHOT: JANUARY 1, 2005.....	2	APPENDIX A. SIGNIFICANT LEGISLATION.....	20
Williamson Act Regions.....	3	APPENDIX B. ABOUT THE WILLIAMSON ACT.....	21
II. ENROLLMENT CHANGE SUMMARIES AND TRENDS		APPENDIX C. DATA TABLES.....	22
Net Acreage Increases and Decreases.....	4	Total Reported Enrollment (2004, 2005).....	23, 24
New Enrollments.....	5	Farmland Security Zone Transfers (2004, 2005).....	25, 26
Farmland Security Zone Transfers.....	6	Cumulative Nonrenewal Acreage (LCA: 2004/2005).....	27
Nonrenewal Initiations.....	7	Cumulative Nonrenewal Acreage (FSZ: 2004, 2005).....	28, 29
Nonrenewal Expirations.....	8	New Enrollments (2004, 2005).....	30, 31
Cancellations.....	9	Nonrenewal Initiations (2004/2005).....	32
Public Acquisitions.....	10	Nonrenewal Expirations (2004/2005).....	33
City Annexations.....	11	Nonrenewals Withdrawn (LCA: 2004/2005).....	34
Net Adjustments.....	12	Cancellations (2004, 2005).....	35, 36
Contract Termination Trends.....	13	Public Acquisitions (2004, 2005).....	37, 38
Cumulative Nonrenewal Trends.....	14	City Annexations (2004, 2005).....	39, 40
Cumulative Nonrenewal Trends (Continued).....	15	Williamson Act Easement Exchange (2004/2005).....	41
Farmland Security Zone Trends.....	16	Net Adjustments (2004, 2005).....	42, 43
Trends Over The Decade.....	17	Land Not Receiving Tax Relief (2004, 2005).....	44, 45
III. OPEN SPACE SUBVENTION ACT PAYMENTS.....	18	Eligible for Subvention Payment (2004, 2005).....	46, 47
		Open Space Subvention Payment (2004, 2005).....	48, 49
		APPENDIX D. COUNTY PARCEL DATA LINKS.....	50



# INTRODUCTION



*Providing information, maps, funding and technical assistance to local governments, consultants, Resource Conservation Districts and non-profit organizations statewide with the goal of conserving the state's agricultural and natural resources.*

*--Division of Land Resource Protection's Mission Statement*

## **The California Land Conservation (Williamson) Act**

The California Land Conservation Act, better known as the Williamson Act, has been the state's premier agricultural land protection program since its enactment in 1965. The Williamson Act preserves agricultural and open space lands through property tax incentives and voluntary restrictive use contracts. Private landowners voluntarily restrict their land to agricultural and compatible open-space uses under minimum 10-year rolling term contracts with local governments. In return, restricted parcels are assessed for property tax purposes at a rate consistent with their actual use, rather than potential market value. In August of 1998, the Legislature enhanced the Williamson Act with the farmland security zone (FSZ) provisions. The FSZ provisions offer landowners greater property tax reduction in return for a minimum rolling contract term of 20 years. For more information about the Williamson Act please refer to Appendix B.

## **About This Report**

This biennial report is a compilation of statewide enrollment data for the Williamson Act. The focus of this report is Williamson Act enrollment as of January 1, 2004 and January 1, 2005. However, enrollment data from prior years are included to provide context in certain discussions. Nearly all of the enrollment data were gathered from applications for payment under the Open Space Subvention Act. The applications are submitted annually to the Department of Conservation (Department) by participating counties and cities. Several cities that administer Williamson Act contracts do not submit applications. As such, the total amount of contracted land may be negligibly understated in this report. Appendix C contains the data tables used to generate the charts and graphics featured in this report.

A small amount of non-Williamson Act, enforceably restricted land is included in this report. Except for Appendix C, this "Other Enforceable Restriction" is mingled with the Williamson Act totals and accounts for less than one percent of the total reported acreage.

This report is mandated by State law and is primarily a report to the Legislature. However, this report is also made available to other audiences, including local governments, researchers, and interested statewide organizations. All audiences may find this report useful as a tool for educational purposes, for anticipating farmland conversion trends, for tracking land use trends, for facilitating program comparisons among participating local governments, and for demonstrating the Williamson Act's relative effectiveness.

## **For More Information, Please Contact:**

California Department of Conservation  
Division of Land Resource Protection  
801 'K' Street, MS 18-01  
Sacramento, CA 95814-3528  
Phone: (916) 324-0850  
FAX: (916) 327-3430

Email: [dlrp@conservation.ca.gov](mailto:dlrp@conservation.ca.gov)  
[www.conservation.ca.gov/dlrp/](http://www.conservation.ca.gov/dlrp/)

# I. ENROLLMENT SNAPSHOT: JANUARY 1, 2005

As of January 1, 2005, 16.6 million acres were enrolled under the Williamson Act statewide. This represents over half of California's farmland total of about 30 million acres, and nearly one-third of the state's privately owned land.

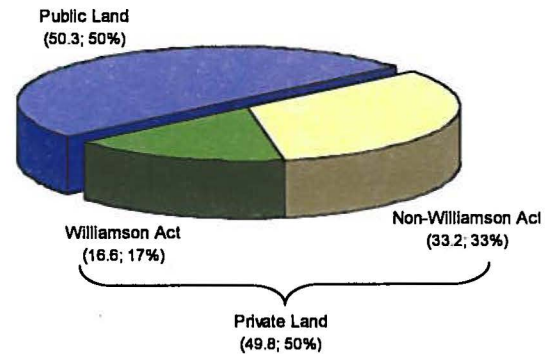
Of California's 58 counties, 54 have adopted the Williamson Act program (Alpine County and Los Angeles County have adopted the program, but have yet to execute a contract). Del Norte, San Francisco, Inyo, and Yuba Counties have not adopted the Williamson Act program as of the snapshot date.

The Farmland Security Zone (FSZ) program has been adopted by 25 counties, although not all of the counties have executed contracts. Twenty-one counties reported a total of 818,199 acres of land under FSZ contract, which constituted nearly 5 percent of the statewide Williamson Act enrollment.

On January 1, 2005, there were 314,880 acres of contracted land at some stage of the nonrenewal process. The cumulative nonrenewal acreage constituted 1.9 percent of statewide Williamson Act enrollment.

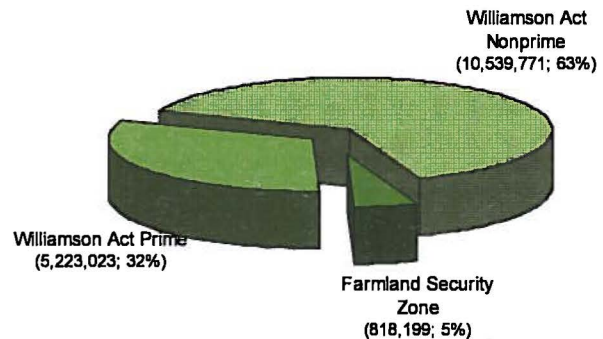
Participating local governments claimed \$38,808,296 in Open Space Subvention Act payments for the partial replacement of property tax revenue losses associated with contract enrollment as of January 1, 2005.

**California Land Use  
(Million Acres; Percentage)**



Source: Department of Conservation: 2004 and California Almanac, Pacific Data Resources: 1991

**Williamson Act Acreage By Category  
(Acres; Percentage)**





# I. WILLIAMSON ACT REGIONS





## II. ENROLLMENT CHANGE SUMMARIES AND TRENDS

### Net Acreage Increases and Decreases

#### Net Enrollment Increase

The newest entry into the Williamson Act program, Modoc County, ranked No. 1 with the largest net enrollment increase for the third consecutive year, peaking in 2004. Relative newcomers Imperial, Merced and Sutter Counties have remained in the Top 10 but, along with Mono County, have reported an 80-90 percent reduction in net increase for 2004-05 compared to 2002-03.

#### Net Enrollment Decrease

Fresno County's net decrease in enrollment is largely due to public acquisitions of prime agricultural land – 10,865 acres in 2004 and 23,297 acres in 2005, most of which were completed by Westlands Water District as a result of a legal settlement with landowners involving water distribution. Sonoma County lost 16,728 adjustment acres in 2004 due to its correction for errors in records. It lost its Other Open Space Restriction Enrollment of 18,215 acres in 2005 in relation to the Department's audit of its Williamson Act program.

In 2005, net decreases for San Luis Obispo, Santa Clara and San Diego Counties were primarily due to public acquisitions. The California Department of Fish & Game (DFG) acquired 15,675 acres of nonprime land in San Luis Obispo County. State agencies, Santa Clara County, Santa Clara County Open Space and the Midpeninsula Regional Open Space District acquired most of 11,426 mostly nonprime acres in Santa Clara County, and DFG and the California Department of Parks & Recreation acquired 9,973 nonprime acres in San Diego County.

Statewide, the Williamson Act program grew by 80,061 acres in 2004 but had its first year-over-year decrease since 2000 in 2005 (-58,273 acres) for a two-year increase of 21,788 acres. In comparison, the Williamson Act program grew by 215,699 acres during 2002-03 and 367,317 acres during 2000-01.

Cross-Reference: Appendix C (p. 23, 24)

**Top 10 Counties with the Largest Enrollment Increase (Net)**

2004				2005			
Ranking		County	Acres	Ranking		County	Acres
2003	2004			2004	2005		
1	1	Modoc*	52,529	1	1	Modoc*	20,128
8	2	Merced	12,541	4	2	Imperial	9,410
6	3	Lassen	8,739	13	3	Mendocino	8,787
3	4	Imperial	7,273	6	4	Glenn	3,448
7	5	Colusa	5,611	2	5	Merced	3,247
5	6	Glenn	3,880	11	6	Solano	3,131
n/a	7	Humboldt	3,333	19	7	Shasta	2,779
2	8	Sutter	3,245	3	8	Lassen	1,783
n/a	9	Tehama	3,066	8	9	Sutter	1,076
4	10	Monterey	2,771	31	10	Alameda	817

\*Newly enrolled county as of January 1, 2003

**Top 10 Counties with the Largest Enrollment Decrease (Net)**

2004				2005			
Ranking		County	Acres	Ranking		County	Acres
2003	2004			2004	2005		
2	1	Fresno	-11,845	1	1	Fresno	-24,510
n/a	2	Sonoma	-11,456	2	2	Sonoma	-19,883
n/a	3	San Joaquin	-4,093	n/a	3	San Luis Obispo	-18,097
n/a	4	Amador	-3,036	5	4	Santa Clara	-15,058
n/a	5	Santa Clara	-2,306	n/a	5	San Diego	-10,057
15	6	San Bernardino	-1,930	n/a	6	Monterey	-7,438
n/a	7	El Dorado	-1,599	n/a	7	Kern	-3,630
4	8	Yolo	-1,420	n/a	8	Tehama	-3,312
13	9	Contra Costa	-645	n/a	9	Orange	-3,197
n/a	10	Sacramento	-472	8	10	Yolo	-2,486

**New Enrollments**

*A new enrollment is the execution of a contract, resulting in an increase in the amount of restricted acreage.*

New enrollments are filed with the anticipation of maintaining the contracted land in agriculture for at least ten years. As such, new enrollments may be seen as an indicator of agricultural stability in a particular location.

In 2004, the amount of new enrollments increased to 137,598 acres from 122,998 acres in 2003 but decreased to 69,529 acres in 2005, its lowest number since 1996. Although new participating counties Modoc, Merced, Imperial and Sutter continued to rank in the Top 10 in 2004, all but Imperial reported a decrease in new enrollments in 2005, with Sutter dropping out of the Top 10. The decrease from 2004 to 2005 is also reflected regionally throughout the State.

In 2004, Glenn and Colusa Counties continued to outpace other counties in the amount of new enrollments under FSZ contract as they did in 2002-03. The two counties accounted for 5,138 of 10,141 new enrolled FSZ acres. In 2005, Colusa did not enroll new FSZ acres, but Glenn accounted for 2,935 of 4,159 acres enrolled statewide.

Since 2001, when they peaked at 497,503 acres due largely to new participating counties, new enrollments have been trending down to a pre-2001 level. New FSZ enrollments, which began in 1999 and peaked in 2001 at 28,223 acres, have decreased by nearly 50 percent in comparison to the previous year in both 2004 and 2005.

Since 1991, the greatest amount of new enrolled acreage occurred in 2001 (497,503 acres) and the least amount in 1993 (60,193 acres).

Cross-Reference: Appendix C (p. 30, 31)

**Top 10 Counties with the Greatest Amount of New Enrollments**

2004				2005			
Ranking		County	Acres	Ranking		County	Acres
2003	2004			2004	2005		
1	1	Modoc*	52,529	1	1	Modoc*	19,575
9	2	Merced	13,374	19	2	Mendocino	10,112
13	3	Lassen	9,253	4	3	Imperial	9,410
3	4	Imperial	7,273	12	4	Solano	4,150
7	5	Colusa	5,611	7	5	Glenn	3,447
27	6	Sonoma	5,056	2	6	Merced	3,370
5	7	Glenn	4,814	18	7	Shasta	3,269
29	8	Tehama	3,643	13	8	Monterey	3,030
6	9	San Luis Obispo	3,528	3	9	Lassen	1,610
2	10	Sutter	3,245	23	10	Tulare	1,303

\*Newly enrolled county as of January 1, 2003

**Regional Ranking by the Amount of New Enrollments**

2004		2005	
Region	Acres	Region	Acres
North Coast & Mountain	64,936	North Coast & Mountain	34,888
Sacramento Valley	24,275	Sacramento Valley	9,539
San Joaquin Valley	20,413	San Joaquin Valley	9,182
Bay & Central Coast	14,181	Bay & Central Coast	8,022
South Coast & Desert	8,487	South Coast & Desert	6,057
Foothill & Sierra	5,306	Foothill & Sierra	1,841
Total	137,598	Total	69,529

### Farmland Security Zone Transfers

A farmland security zone (FSZ) transfer is the rescission of an existing Williamson Act contract with the concurrent creation of a FSZ contract on the same land. FSZ transfers do not result in a net change to the amount of contracted acreage within a county.

FSZ transfers signify a long-term agricultural commitment in particular areas. This commitment is made possible only upon deliberate action by the county in adopting the FSZ program and, subsequently, by the landowner in petitioning for the FSZ transfer.

In 2004, the amount of FSZ transfers decreased by 23 percent or 10,664 acres statewide compared to 2003. The San Joaquin Valley, however, led the state by a wide margin, more than doubling its transfers compared to 2003. Prime agricultural land accounted for 83 percent of the total FSZ acres transferred statewide.

In 2005, the amount of FSZ transfers decreased by 79 percent compared to 2004 to its lowest number since the program's inception in 1999. The San Joaquin Valley accounted for nearly all of the acres transferred. Three regions did not report any transfers. Although the number of acres was relatively small, 99 percent of the 2005 acres transferred was prime agricultural land.

Since 1991, the greatest number of FSZ acres transferred occurred in 1999 (209,480), the least in 2005 (7,444).

Cross-Reference: Appendix C (p. 25, 26)

Top 10 Counties with the Greatest Amount of FSZ Transfers

2004				2005			
Ranking		County	Acres	Ranking		County	Acres
2003	2004			2004	2005		
8	1	Kings	18,067	3	1	Kern	5,619
n/a	2	Fresno	6,844	2	2	Fresno	831
2	3	Kern	4,399	5	3	Madera	331
n/a	4	Tulare	1,420	8	4	Monterey	159
4	5	Madera	1,370	n/a	5	Yolo	159
11	6	Colusa	1,059	1	6	Kings	145
1	7	Lassen	689	10	7	San Luis Obispo	119
3	8	Monterey	585	4	8	Tulare	81
12	9	Ventura	503				
n/a	10	San Luis Obispo	362				

Regional Ranking by the Amount of FSZ Transfers

2004		2005	
Region	Acres	Region	Acres
San Joaquin Valley	32,193	San Joaquin Valley	7,007
Sacramento Valley	1,278	Bay & Central Coast	278
Bay & Central Coast	947	Sacramento Valley	159
North Coast & Mountain	689	Foothill & Sierra	0
South Coast & Desert	503	North Coast & Mountain	0
Foothill & Sierra	0	South Coast & Desert	0
Total	35,609	Total	7,444

**Nonrenewal Initiations**

*The initiation of nonrenewal on a contract by either the landowner or the local government.*

Nonrenewals are often filed with the anticipation of converting farmland to other uses. As such, nonrenewal trends may be seen as an indicator of likely farmland conversion in particular locations.

In 2004, the amount of acreage entering nonrenewal nearly doubled statewide to 60,994 acres compared to 2003. Kern County and the San Joaquin Valley and Santa Barbara and the South Coast & Desert Region led the increase. However, all regions experienced an increase in nonrenewal initiations compared to 2003.

2005 was generally a repeat of 2004. Statewide nonrenewal initiations increased 43 percent compared to 2004 to 87,159 acres, led by the San Joaquin Valley and South Coast & Desert Regions. However, Stanislaus County replaced Kern County as having the most acres entering nonrenewal. Imperial County, one of a group of recent new participating counties, joined the Top 10. Again, the increase in nonrenewal initiations occurred in all regions.

Statewide, nonrenewal initiations have increased each year since 2001 and in 2005 reached their largest amount since 1991. Yearly totals for 2004 and 2005 far exceed the yearly average of 26,178 acres for the previous eight years.

Since 1991, nonrenewal was initiated on the most contracted acres in 1991 (145,755) and the least in 1997 (15,259).

Cross-Reference: Appendix C (p. 32)

**Top 10 Counties with the Greatest Amount of Nonrenewal Initiations**

2004				2005			
Ranking		County	Acres	Ranking		County	Acres
2003	2004			2002	2005		
4	1	Kern	19,970	7	1	Stanislaus	21,001
7	2	Santa Barbara	13,393	2	2	Santa Barbara	18,248
24	3	San Luis	3,403	5	3	San Joaquin	9,824
12	4	Sacramento	3,329	10	4	Tehama	7,098
1	5	San Joaquin	3,179	1	5	Kern	4,102
23	6	Madera	2,363	18	6	Fresno	3,379
3	7	Stanislaus	2,266	11	7	Placer	2,576
6	8	Yolo	1,932	6	8	Madera	2,303
29	9	Riverside	1,727	n/a	9	Imperial	2,070
14	10	Tehama	1,600	8	10	Yolo	2,069

**Regional Ranking by the Amount of Nonrenewal Initiations**

2004		2005	
Region	Acres	Region	Acres
San Joaquin Valley	29,660	San Joaquin Valley	44,658
South Coast & Desert	16,040	South Coast & Desert	20,877
Sacramento Valley	7,633	Sacramento Valley	12,371
Bay & Central Coast	4,349	Foothill & Sierra	5,124
Foothill & Sierra	3,075	Bay & Central Coast	3,832
North Coast & Mountain	237	North Coast & Mountain	297
Total	60,994	Total	87,159



**Nonrenewal Expirations**

*A nonrenewal expiration is the termination of a contract as a result of completing the nonrenewal process.*

By far, most contracts are terminated through nonrenewal expiration. Upon the expiration of a contract, the restrictions are removed and the property tax assessment, which has been gradually increasing from the Williamson Act level over the nonrenewal period, returns to its full market value.

In 2004, the amount of contracted land terminated through nonrenewal expirations decreased from a low of 16,527 acres in 2003 to a new low of 11,997 acres, continuing a decreasing trend since 1999. Eight counties in the Top 10 were new entries, but the Sacramento and San Joaquin Valley Regions continued to rank No. 1 and No. 2.

In 2005, nonrenewal expirations nearly doubled over 2004 but remained well below the average of 59,638 acres for the current decade. Santa Clara County vaulted to the top ranking with nonrenewal expiration on five parcels in excess of 500 acres each and, with San Luis Obispo County, accounted for most of the acres expired in the Bay & Central Coast Region, which was the top ranking region. Yolo County continued to lose a relatively large number of acres through nonrenewal expirations, totaling approximately 34,000 acres since 2000.

Since 1991, the greatest amount of contracted acreage expired through nonrenewal in 1999 (118,391 acres) and the least in 2004 (11,997 acres).

Cross-Reference: Appendix C (p. 33)

**Top 10 Counties with the Greatest Amount of Nonrenewal Expirations**

2004				2005			
Ranking		County	Acres	Ranking		County	Acres
2003	2004			2004	2005		
4	1	San Joaquin	1,967	22	1	Santa Clara	4,242
20	2	Sacramento	1,778	6	2	San Luis Obispo	3,320
n/a	3	Yolo	1,605	n/a	3	Kern	2,673
18	4	Calaveras	1,169	3	4	Yolo	2,666
10	5	Fresno	825	1	5	San Joaquin	2,298
13	6	San Luis Obispo	781	11	6	Madera	2,182
17	7	Placer	497	16	7	Santa Barbara	1,164
2	8	Tehama	492	8	8	Tehama	990
n/a	9	Lake	486	28	9	Sonoma	656
n/a	10	Glenn	388	7	10	Placer	619

**Regional Ranking by the Amount of Nonrenewal Expirations**

2004		2005	
Region	Acres	Region	Acres
Sacramento Valley	4,308	Bay & Central Coast	8,759
San Joaquin Valley	3,485	San Joaquin Valley	7,616
Foothill & Sierra	1,993	Sacramento Valley	4,255
Bay & Central Coast	1,267	South Coast & Desert	1,233
North Coast & Mountain	494	Foothill & Sierra	766
South Coast & Desert	451	North Coast & Mountain	657
Total	11,997	Total	23,285

**Cancellations**

*A cancellation is the immediate termination of a contract by a landowner, which requires payment of a cancellation fee and board/council approval based on rigorous findings.*

State law limits the use of cancellation to narrow conditions. Due to the specific findings required for a board or council to approve a contract cancellation, only a small fraction of yearly contract terminations occur as a result of cancellation.

In 2004, the amount of contracted land terminated through cancellation increased nearly six-fold compared to 2003 to 2,933 acres, its greatest amount since 1995. San Joaquin County and the San Joaquin Valley Region cancelled the vast majority of acres in 2004. The City of Lathrop in San Joaquin County cancelled 2,017 acres of prime agricultural land for residential development. The cancellation fee collected (excluding a parcel of 95 acres) was \$3,266,025.

In 2005, cancellations dropped to 1,018 acres, but this amount was still above the yearly average of 795 acres from 1996-2003. Shasta County's total cancellations for 2004-05 involved a single parcel of mostly nonprime agricultural land in each of the two years.

Statewide, cancellation acreage had been decreasing since 1999 to its low point of 161 acres in 2002, but has trended upward over the current three-year period. Since 1991, the greatest amount of acres cancelled occurred in 1995 (5,694), the least in 1994 (155).

Cross-Reference: Appendix C (p. 35, 36)

**Top 10 Counties with the Greatest Amount of Cancellations**

2004				2005			
Ranking		County	Acres	Ranking		County	Acres
2003	2004			2004	2005		
n/a	1	San Joaquin	2,020	2	1	Shasta	505
n/a	2	Shasta	479	7	2	Riverside	213
n/a	3	Yolo	162	4	3	Fresno	145
3	4	Fresno	134	1	4	San Joaquin	123
4	5	Kern	93	n/a	5	Santa Clara	15
n/a	6	Solano	44	n/a	6	Stanislaus	10
1	7	Riverside	0	5	7	Kern	8
				n/a	8	Sutter	1

**Regional Ranking by the Amount of Cancellations**

2004		2005	
Region	Acres	Region	Acres
San Joaquin Valley	2,247	North Coast & Mountain	505
North Coast & Mountain	479	San Joaquin Valley	286
Sacramento Valley	206	South Coast & Desert	213
South Coast & Desert	0	Bay & Central Coast	15
Bay & Central Coast	0	Sacramento Valley	1
Foothill & Sierra	0	Foothill & Sierra	0
Total	2,933	Total	1,018

**Public Acquisitions**

*A public acquisition is the immediate termination of an enforceable restriction through eminent domain, or in lieu of eminent domain, by a public agency. The public agency may need to make specific findings and notify the Director of Conservation.*

Williamson Act contracted land is acquired by public entities for a wide range of public improvements. Wildlife habitat, water resource management, public open space, and schools are common reasons for publicly acquiring contracted land. Before acquiring contracted lands, public agencies must make findings that there is no other noncontracted land reasonably feasible for the purpose, and that the lower cost of contracted land is not a primary factor in their decision.

In 2004, public acquisitions decreased to a more average level of 22,090 acres after record highs of 49,265 and 54,081 acres in 2002 and 2003 respectively. Fresno County’s acquisitions involved mostly prime agricultural land (10,865 acres), most of which were completed by Westlands Water District as a result of a legal settlement with landowners involving water distribution. Acquisitions in Santa Clara County were divided among County, regional and federal entities. The US Forest Service accounted for all acreage acquired in El Dorado County.

In 2005, public acquisitions increased to a new high of 70,334 acres. All of Fresno County’s 23,297 acquired acres were prime agricultural land and most were acquired by Westlands Water District. Acquisitions in San Luis Obispo County were by State Department of Fish & Game, which along with State Department of Parks & Recreation accounted for San Diego County’s acquired acreage. A combination of State, County and open space districts acquired most of the acreage in Santa Clara County.

Statewide, excepting Fresno County, most publicly acquired acres in 2004-05 were nonprime agricultural land. Although public acquisitions decreased in 2001 and 2004 compared to the previous year, acquired acres have trended upward since 1998 to record highs, and public acquisition has exceeded nonrenewal expiration as the leading cause of contract acres terminated in each of the past four years, 2002-05.

Since 1991, the greatest amount of publicly acquired acres occurred in 2005 (70,334), the least in 1998 (9,493).

Cross-Reference: Appendix C (p. 37, 38)

**Top 10 Counties with the Greatest Amount of Public Acquisitions**

2004				2005			
Ranking		County	Acres	Ranking		County	Acres
2003	2004			2004	2005		
2	1	Fresno	12,217	1	1	Fresno	23,297
5	2	Santa Clara	2,919	4	2	San Luis Obispo	15,675
n/a	3	El Dorado	1,856	2	3	Santa Clara	11,426
3	4	San Luis Obispo	900	17	4	San Diego	10,005
15	5	Merced	781	n/a	5	Tehama	2,400
14	6	Contra Costa	635	n/a	6	Mendocino	2,080
12	7	Madera	500	n/a	7	Colusa	1,880
10	8	Alameda	378	15	8	Kern	1,430
n/a	9	Sacramento	312	16	9	Solano	799
n/a	10	San Benito	228	14	10	Tulare	490

**Regional Ranking by the Amount of Public Acquisitions**

2004		2005	
Region	Acres	Region	Acres
San Joaquin Valley	13,812	Bay & Central Coast	27,101
Bay & Central Coast	5,741	San Joaquin Valley	25,393
Foothill & Sierra	1,856	South Coast & Desert	10,394
Sacramento Valley	483	Sacramento Valley	5,327
South Coast & Desert	197	North Coast & Mountain	2,080
North Coast & Mountain	0	Foothill & Sierra	40
Total	22,090	Total	70,334

**City Annexations**

*A city annexation is the succession or immediate termination of a contract upon the annexation of contracted land by a city. A valid city protest is required to terminate a contract, as determined by the local agency formation commission.*

Certain contracts executed prior to 1991 may be terminated through city annexation only if the city filed a valid protest upon county notification at the time of contract formation. At present the total amount of contracted acreage covered by protested contracts statewide is unknown.

In 2004, the amount of contracted land annexed by cities decreased from 3,101 acres in 2003 to 1,931 acres, most of which were annexed by the City of Chino in San Bernardino County. Statewide, prime annexed acres outnumbered nonprime acres by more than two to one.

In 2005, the amount of contracted land annexed by cities decreased further to 958 acres, the lowest amount since 1997. Prime annexed acres outnumbered nonprime acres by nearly two to one. The City of Roseville annexed a parcel of 327 acres in Placer County. The City of Shafter annexed most of the acres in Kern County, and the Cities of Porterville and Visalia annexed acres in Tulare County.

Statewide, 2004-05 represents a sharp decrease in contracted acres annexed by cities compared to 2002-03, but the current decade has seen even more dramatic increases and decreases from year to year. Excluding the peak years of 1998-00, 2004 was about an average year, but 2005 was well below that average.

The greatest amount of annexed acreage occurred in 2000 (9,961 acres) and the least in 1992 (863 acres).

Cross-Reference: Appendix C (p. 39, 40)

**Top 10 Counties with the Greatest Amount of City Annexations**

2004				2005			
Ranking		County	Acres	Ranking		County	Acres
2003	2004			2004	2005		
n/a	1	San Bernardino	1,518	n/a	1	Placer	327
8	2	San Joaquin	302	5	2	Kern	325
4	3	Riverside	38	4	3	Tulare	244
3	4	Tulare	31	n/a	4	Kings	40
n/a	5	Kern	23	2	5	San Joaquin	17
6	6	Stanislaus	17	6	6	Stanislaus	4
7	7	Solano	2	7	7	Solano	1

**Regional Ranking by the Amount of City Annexations**

2004		2005	
Region	Acres	Region	Acres
South Coast & Desert	1,556	San Joaquin Valley	629.74
San Joaquin Valley	373	Foothill & Sierra	327.2
Sacramento Valley	2	Sacramento Valley	0.88
Bay & Central Coast	0	Bay & Central Coast	0
Foothill & Sierra	0	North Coast & Mountain	0
North Coast & Mountain	0	South Coast & Desert	0
Total	1,931	Total	958



**Net Adjustments**

*Adjustments may be the reconciliation of errors in records or previous reports, re-mappings or re-surveys, lot line adjustments, and/or parcel divisions.*

Annually accounting for all of the changes that occur to the 16 million acre Williamson Act program is a big task performed by local governments. The net adjustments category is partly a byproduct of the elimination of errors that occur in local government enrollment data. The category is also a by-product of imperfect forms that local governments must use to report enrollment data.

In 2004, Sonoma County lost 16,728 adjustment acres due to its correction for errors in records. Humboldt County gained acres for this reason, and Amador County lost acreage for a variety of reasons. Statewide, the net acreage lost was prime agricultural land. It was the largest net amount since 1995 and well above the average for previous years.

In 2005, Sonoma County lost its Other Open Space Restriction Enrollment of 18,215 acres in relation to the Department’s audit of its Williamson Act program. Monterey and Orange Counties lost acreage due to errors in records and nonrenewals not reported in prior years. Statewide, most of the net acreage lost to adjustments was nonprime agricultural land. The amount of adjustments in 2005 of 32,205 acres represents an all-time high dating back to 1994. Net adjustments have exceeded nonrenewal expirations in 2004-05 in terms of reducing the amount of enrolled acres reported.

Since 1994, the largest net adjustment occurred in 2005 (32,205 acres removed) and the smallest in 1996 (4,394 acres added).

Cross-Reference: Appendix C (p. 42, 43)

**Top 10 Counties with the Greatest Amount of Adjustments (Net)**

2004				2005			
Ranking		County	Acres	Ranking		County	Acres
2003	2004			2004	2005		
31	1	Sonoma	-16,496	1	1	Sonoma	-19,558
36	2	Humboldt	3,204	n/a	2	Monterey	-10,468
4	3	Amador	-2,991	35	3	Orange	-3,197
21	4	Fresno	-768	4	4	Fresno	-1,625
7	5	San Luis Obispo	-737	20	5	Alameda	993
16	6	Santa Barbara	-720	12	6	Mendocino	792
24	7	Madera	677	6	7	Santa Barbara	729
1	8	Lassen	-514	37	8	Modoc	553
20	9	Butte	-395	34	9	Placer	507
12	10	Stanislaus	231	3	10	Amador	-483

**Regional Ranking by the Amount of Adjustments (Net)**

2004		2005	
Region	Acres	Region	Acres
Bay & Central Coast	-17,252	Bay & Central Coast	-29,020
Foothill & Sierra	-3,108	South Coast & Desert	-2,550
North Coast & Mountain	3,077	San Joaquin Valley	-2,198
South Coast & Desert	-693	North Coast & Mountain	1,578
Sacramento Valley	-475	Foothill & Sierra	-226
San Joaquin Valley	-42	Sacramento Valley	211
Total	-18,493	Total	-32,205

### Contract Termination Trends

Statutorily, there are five ways to terminate a Williamson Act contract: nonrenewal, cancellation, public acquisition, city annexation, and easement exchange. For reporting purposes, acreage may also be removed on paper via "Net Adjustments".

**Nonrenewal:** The nonrenewal process is the most significant mechanism for the termination of Williamson Act contracted land. Since 1996, more contracted acreage has been terminated through nonrenewal expiration than all of the other methods of termination combined, a yearly average of 59,638 acres. Statewide, nonrenewal expirations have trended down since 1999, an average of 42,788 acres.

**Public acquisition:** Statewide, public acquisition has been the second leading cause of contract termination acreage over the current decade and has exceeded nonrenewal expiration for the past four consecutive years, 2002-05, a yearly average of 48,943 acres. Acquired acreage has trended upward since 1998, averaging 38,113 acres per year.

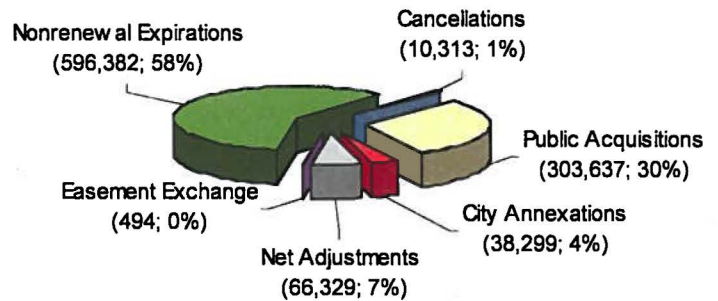
**Net adjustments:** A "Net Adjustment" is not a true method of contract termination. However, from 1996-05, net adjustments have averaged the removal of 6,693 acres per year statewide, with net removal occurring in six of the ten years and the removal for 2004-05 well above average.

**City annexation:** The actual amount of contracted land terminated through annexation is overstated since this analysis assumes that affected contracts are terminated, not succeeded to, upon annexation. Annexation acreage has fluctuated over the current decade. Excluding the peak years of 1998-00, which averaged 8,580 acres annexed, the 1,931 acres annexed in 2004 was a little above the average of 1,794 acres for the decade, but 958 acres in 2005 was well below average.

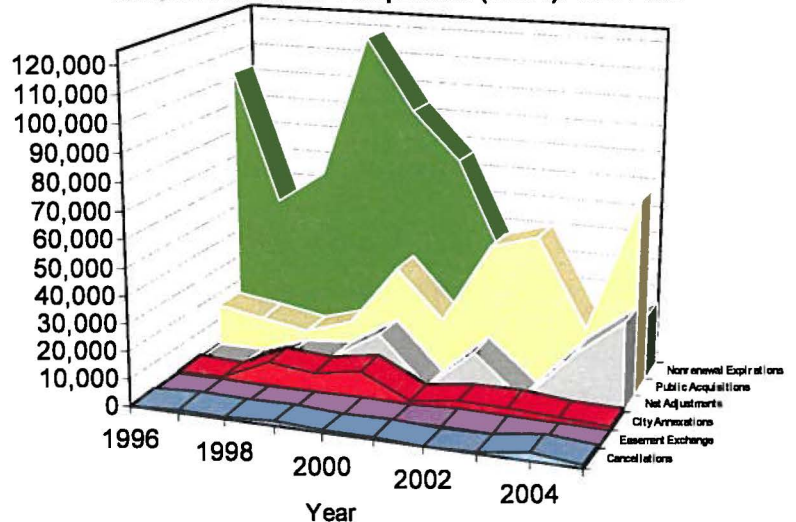
**Cancellation:** Statewide, cancellation acreage had been decreasing since 1999 to its low point of 161 acres in 2002, but has trended upward over the current three-year period. For the 1996-05 decade, the 2,933 acres cancelled in 2004 was more than double the average of 1,031, while 1,018 acres cancelled in 2005 was about average.

**Easement Exchange:** This method of contract termination became available in 1998. As of 2005, three Williamson Act easement exchanges have taken place. In those three exchanges, Williamson Act contracts were rescinded on 494 acres in exchange for the placement of agricultural conservation easements on 579 acres.

Cumulative Acres Terminated By Category: 1996-2005 (Acres; Percentage)



Termination Trend Comparison (Acres): 1996-2005



### Cumulative Nonrenewal Trends

Cumulative nonrenewal acreage refers to the total amount of acreage undergoing the nine-year phase out of contract status at any one time.

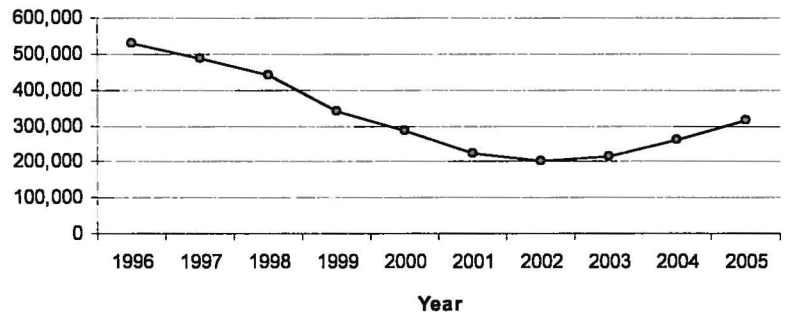
Statewide cumulative nonrenewal acreage peaked at nearly 700,000 acres (record high) in 1993 and then began a steady decline that ended in 2003 and has continued to rise in 2004-05. In 1993, statewide cumulative nonrenewal acreage made up 4.4 percent of the total statewide enrollment; in 2005 it was 1.9 percent. This ratio has been increasing over the three-year period 2003-05. Controlling for changes to total statewide enrollment, in 1993 there were 22 acres of continuing contracted acres per cumulative nonrenewal acre; in 2003 there were 76 acres; in 2005 there were 52 acres.

The middle graphic shows the prime/nonprime composition of the statewide cumulative nonrenewal acreage. Notably, the amount of cumulative nonrenewal acreage in both the prime and nonprime categories had been declining until 2003. Research has also shown that the proportion of prime/nonprime acreage within the cumulative nonrenewal acreage is similar to the statewide enrollment proportions. For example, in 2005 prime land represented 36 percent of the total statewide enrollment and 35 percent of the cumulative nonrenewal acreage.

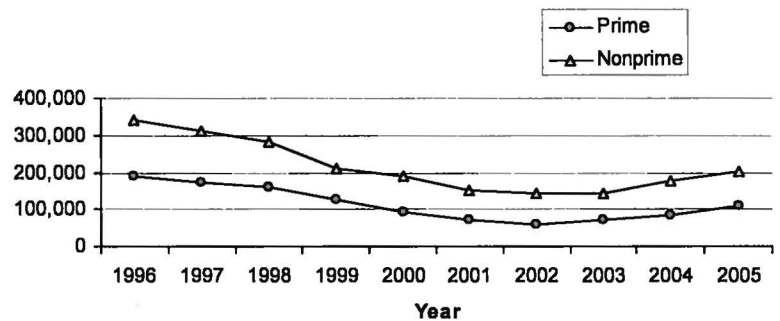
The bottom graphic shows the statewide cumulative nonrenewal acreage from a different perspective. In 2003, nonrenewal initiations exceeded expirations for the first time since 1993, which began a 9-year decline in statewide cumulative nonrenewal acreage. Beginning in 2003, cumulative nonrenewal acreage has been on the rise.

Cross-Reference: Appendix C (p. 27)

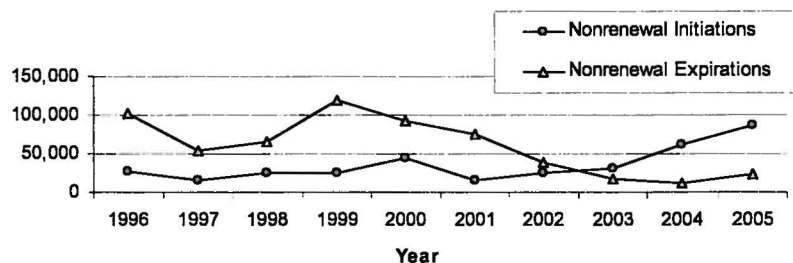
Statewide Cumulative Nonrenewal Acreage: 1996-2005



Statewide Cumulative Nonrenewal Acreage 1996-2005  
Prime v. Nonprime



Nonrenewal Initiations v. Nonrenewal Expirations: 1996-2005  
(Acres)



**Cumulative Nonrenewal Trends**

*Cumulative nonrenewal acreage refers to the total amount of acreage undergoing the nine-year phase out of contract status at any one time.*

In 2004-05 as in 2001-03, Orange County easily maintained its top ranking statewide in the percentage of its enrollment that is under the nonrenewal process. As of 2005, Orange County has 225 acres under continuing contract. Its Williamson Act program peaked in popularity in the early 1970s when it had over 77,000 acres under contract.

In 2004-05, counties in the South Coast & Desert and Foothill & Sierra Regions reversed positions from 2002-03 to again dominate the Top 10 rankings. Placer County moved up one rank from No. 3 in 2002-03 to No. 2 in 2004-05, initiating nonrenewal on 1,507 acres in 2004 and another 2,576 acres in 2005, approximately 32 percent of its total acreage in nonrenewal.

Cross-Reference: Appendix C (p. 27)

**Top 10 Counties with the Largest Percentage of Enrollment Under Nonrenewal**

2004			2005				
Ranking		County	%	Ranking		County	%
2003	2004			2004	2005		
1	1	Orange	64.54	1	1	Orange	97.59
3	2	Placer	22.93	2	2	Placer	28.72
4	3	Plumas	7.60	3	4	Plumas	7.60
9	4	Riverside	5.69	8	5	Santa Barbara	6.66
5	5	El Dorado	4.84	4	3	Riverside	5.99
6	6	San Joaquin	4.46	6	6	San Joaquin	5.86
7	7	Sacramento	4.46	5	7	El Dorado	5.27
25	8	Santa Barbara	3.52	9	8	Stanislaus	4.90
11	9	Amador	3.45	7	9	Sacramento	4.57
8	10	Contra Costa	3.32	10	10	Contra Costa	3.97

**Regional Ranking by Percentage of Enrollment Under Nonrenewal**

2004		2005	
Region	%	Region	%
South Coast & Desert	3.92	South Coast & Desert	6.39
Foothill & Sierra	3.35	Foothill & Sierra	3.99
San Joaquin Valley	1.53	San Joaquin Valley	2.08
Bay & Central Coast	1.49	Sacramento Valley	1.43
Sacramento Valley	1.12	Bay & Central Coast	1.12
North Coast & Mountain	1.04	North Coast & Mountain	0.88



**Farmland Security Zones**

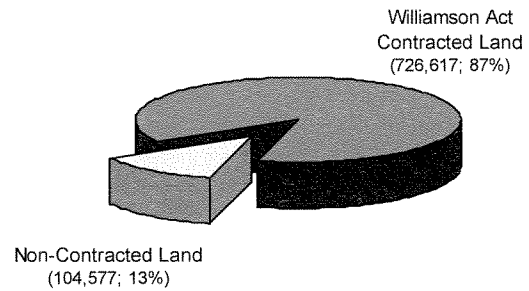
In August 1998, the farmland security zone (FSZ) provisions were enacted with the passage of Senate Bill 1182. The FSZ provisions offer landowners greater property tax reductions in return for a contractual commitment of at least 20 years.

As enacted in August of 1998, the FSZ provisions allowed for the creation of a FSZ contract only through the rescission of an existing Williamson Act contract. That requirement was changed on January 1, 2000, thus allowing non-contracted land to go straight into an FSZ contract. The graphic at right shows that most (87 percent) of the existing FSZ acreage was created through the rescission of existing Williamson Act contracts.

As of January 1, 2005, 21 counties had a percentage of their Williamson Act land under FSZ contract. This percentage ranged from 41 percent (Kings County) to 0.04 percent (Yolo County), with an average of 8 percent. Regionally, only the Sacramento Valley and San Joaquin Valley have greater than 2 percent of their total amount of contracted land under FSZ contract: 5.9 percent and 8 percent, respectively.

The FSZ program has continued to grow but at a much slower pace over the past three years 2003-05, increasing by 44,180 acres in 2004 and 11,222 acres in 2005. Since 1999, the FSZ program added the most acreage in 2000 (229,378 acres) and the least in 2005.

**The Origin of Existing Farmland Security Zone Contracts (Acres; Percentage)**

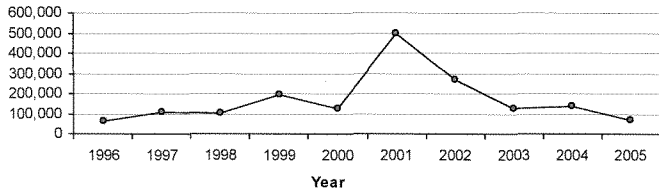


**Farmland Security Zone Acreage and Percentage of Total Enrollment By County\***

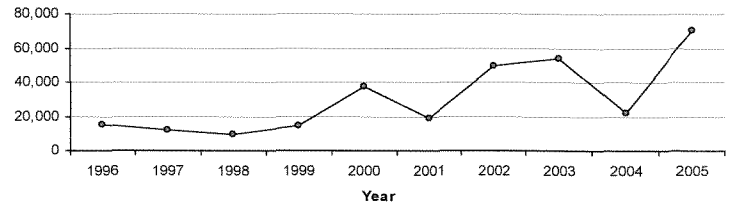
County	FSZ Acres	Percent of Total
Kings	278,312	40.70%
Glenn	88,633	21.28%
Colusa	58,150	18.33%
Marin	17,062	16.58%
San Joaquin	60,218	11.24%
Madera	55,451	10.05%
Sierra	3,677	8.88%
Kern	150,274	8.78%
Lassen	19,557	6.14%
Plumas	4,595	5.54%
Monterey	30,495	4.01%
Ventura	2,855	2.22%
Tehama	11,356	1.42%
Fresno	24,069	1.58%
Tulare	11,072	0.99%
Placer	1,323	2.97%
Santa Cruz	123	0.64%
El Dorado	185	0.53%
Santa Barbara	133	0.02%
San Luis Obispo	499	0.06%
Yolo	159	0.04%

\*As of January 1, 2005

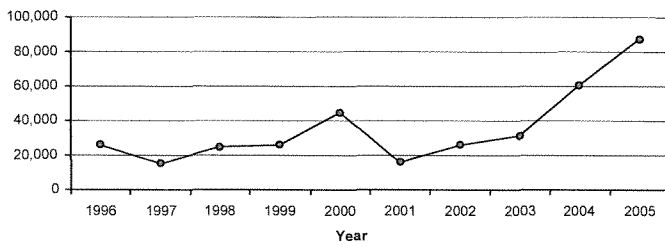
New Enrollments (Acres): 1996-2005



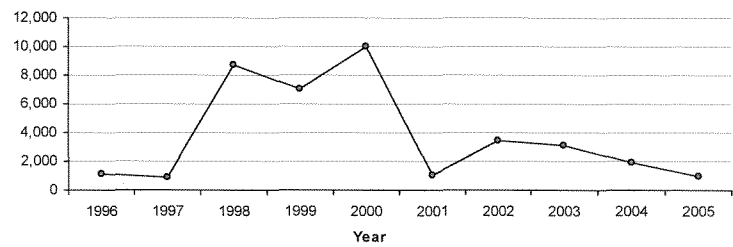
Public Acquisitions (Acres): 1996-2005



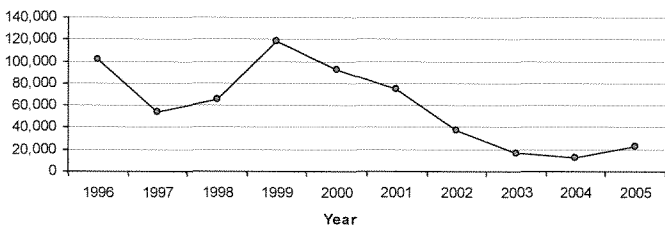
Nonrenewal Initiations (Acres): 1996-2005



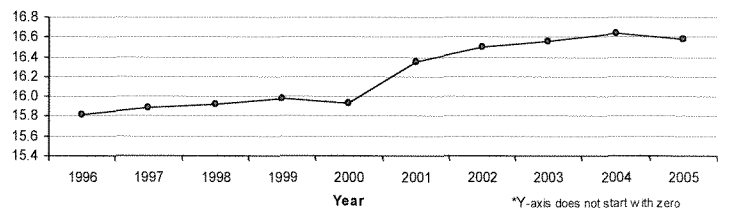
City Annexations (Acres): 1996-2005



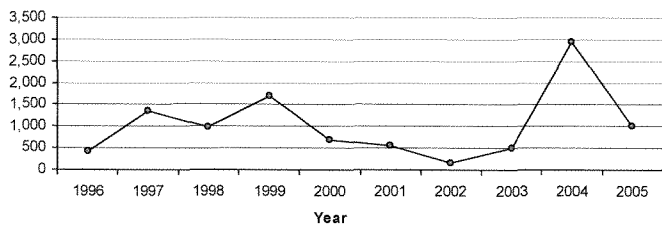
Nonrenewal Expirations (Acres): 1996-2005



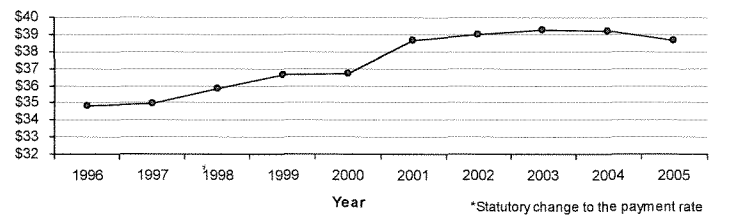
Total Reported Acreage (Millions): 1996-2005\*



Cancellations (Acres): 1996-2005



Open Space Subvention Act Payments (Millions): 1996-2005



### III. OPEN SPACE SUBVENTION ACT PAYMENTS

#### Open Space Subvention Act

The Open Space Subvention Act provides for the partial replacement of local property tax revenues foregone as a result of participation in the Williamson Act and other enforceable restriction programs.

Since the first Open Space Subvention payments made in fiscal year 1972-73, the State has distributed over \$762 million to counties and cities in support of the Williamson Act program. The \$39,307,760 claimed in subventions and the 16,104,339 acres reported as eligible for subvention payment in 2004 represent increases over 2003. However, these figures declined in 2005 to \$38,808,296 and 15,926,181 acres. Actual subvention payments, which had been increasing since 1996, declined in 2004 and 2005.

While prime farmlands constitute about one-third of statewide enrollment, they accounted for roughly 73 percent of total subvention claims in 2005. Other enforceably restricted lands, including Open Space Easement lands that qualify for subvention payments, accounted for 0.1 percent of total subventions in 2005.

Not all Williamson Act contracted land is eligible for subvention payment. For example, local governments generally cannot claim subventions on contracted land that is under nonrenewal or valued for property tax purposes at Proposition 13 levels. In 2004-05, approximately 3-4 percent of the statewide enrollment was not eligible for subvention payment.

The Top 10 counties in terms of subvention entitlement remain fairly stable over the years. The eight San Joaquin Valley counties ranked No. 1 through No. 8 in 2004-05 as they did in 2003-04. The San Joaquin Valley contains about 44 percent of the total statewide Williamson Act enrollment and accounts for 59 percent of total subventions.

Cross-Reference: Appendix C (p. 48, 49)

Top 10 Counties with the Largest Subvention Entitlement

2004				2005			
Ranking		County	Acres	Ranking		County	Dollars
2003	2004			2004	2005		
1	1	Fresno	5,670,218	1	1	Fresno	5,611,941
2	2	Kern	4,823,882	2	2	Kern	4,803,179
3	3	Tulare	3,528,215	3	3	Tulare	3,522,019
4	4	Kings	2,877,367	4	4	Kings	2,673,518
5	5	San Joaquin	1,970,534	5	5	San Joaquin	1,942,034
6	6	Stanislaus	1,670,086	6	6	Stanislaus	1,609,009
8	7	Madera	1,505,483	8	7	Merced	1,412,597
9	8	Merced	1,404,241	7	8	Madera	1,383,174
7	9	Yolo	1,324,809	9	9	Yolo	1,319,389
10	10	San Luis Obispo	1,117,819	10	10	San Luis Obispo	1,099,327

Open Space Subvention Act Payment Claims By Region (Dollars)\*

Region	Land Conservation Act		Farmland Security Zone				Agricultural Conservation Easement		Other Eligible Open Space	Total
	Prime	Nonprime	Urban		Non-Urban		Prime	Nonprime		
			Prime	Nonprime	Prime	Nonprime				
Bay & Central Coast	1,165,323	2,740,697	101,170	14,473	57,694	22,185	0	0	2,338	4,103,879
Foothill & Sierra	281,619	672,159	0	6,186	5,825	7,843	0	0	2,287	975,919
North Coast & Mountain	900,264	1,551,751	4,364	272	59,199	7,137	0	0	0	2,522,987
Sacramento Valley	3,761,175	1,679,779	255,149	26,948	567,657	9,504	633	4	0	6,300,851
San Joaquin Valley	16,916,220	2,971,594	723,643	5,342	2,312,741	25,607	1,639	0	686	22,957,471
South Coast & Desert	1,305,317	579,846	12,220	5,171	2,851	244	1,275	214	40,052	1,947,190
<b>Totals</b>	<b>24,329,917</b>	<b>10,195,826</b>	<b>1,096,546</b>	<b>58,391</b>	<b>3,005,968</b>	<b>72,521</b>	<b>3,547</b>	<b>218</b>	<b>45,362</b>	<b>38,808,296</b>

\*Year 2005. Actual payment totals may differ slightly due to audit adjustments and/or enforcement actions

## IV. COMPLIANCE AUDITS

In 1988, Williamson Act and Open Space Subvention Act program audits were initiated for participating Williamson Act counties and cities. At that time, the Department of Conservation contracted with the Department of General Services to conduct audits of several counties. As a result of those initial audits, approximately \$550,000 in subventions was recaptured for payments made on land not eligible for subventions and for cancellation fees paid to counties but not forwarded to the State. In fiscal year 1996-97, the Department began an annual Williamson Act/Open Space Subvention Act compliance audit program through contracts with the Department of Finance. From fiscal year 1996-97 to 2002-03, the State has invested nearly \$503,000 to conduct the annual audits. This investment has resulted in a return to the General Fund of more than \$1.9 million from the recapture of subvention overpayments and unpaid contract cancellation fees.

Claiming subvention on land not eligible for payment is the most frequent cause of subvention overpayments. This includes land starting through the contract nonrenewal process, and land valued lower under Proposition 13 valuation for regular Williamson Act contracts. Another problem area is when cancellation fees are collected by local governments and not transmitted within the statutorily required timeframe to the State Controller's Office.

Besides the subventions recovered by the audits, a major benefit is the correction of procedures for cities and counties that may not have followed the Williamson Act requirements and restrictions. The audit findings provide reassurance to both local governments and the State that the provisions of statute are being followed. Since 1972, over \$762 million in State subventions have been certified to local governments to provide replacement revenues for the loss in tax revenue and administrative costs resulting from participation in the Williamson Act program. The audit program provides a valuable check to ensure that the program is administered according to statute at the local level, and to carry out the State's fiduciary responsibility for a major investment by the taxpayers of California.

- **Fiscal year 1996-97** audits of Kern, San Joaquin and Tulare Counties recaptured \$65,087 in subvention overpayments. The audit also discovered a contract violation that led to the Department's initiation of legal action to remedy the violation. The resolution of the contract enforcement action resulted in a payment of \$100,000 to the California Farmland Conservancy Program Fund, and the money was subsequently used to fund acquisition of perpetual agricultural conservation easements.
- **Fiscal year 1997-98** audits of Fresno, Kings, Stanislaus and Madera Counties resulted in the recapture of \$165,607 in subvention overpayments.
- **Fiscal year 1998-99** audits of San Luis Obispo, Riverside, Monterey and Tehama Counties resulted in the recapture of \$958,497 in subvention overpayments. Of this amount, \$911,298 was for cancellation fees collected by Riverside County but not forwarded to the State Controller's Office.
- **Fiscal year 1999-00** audits of Colusa, San Diego and Yolo Counties resulted in the recapture of \$150,406 in subvention overpayments.
- **Fiscal year 2000-01** audits of Contra Costa, Glenn, San Benito, Santa Barbara and Tuolumne Counties resulted in the recapture of \$5,000 in overpaid subventions.
- **Fiscal year 2001-02** audits of Marin, Mendocino, Placer, San Bernardino and Santa Clara Counties resulted in the recapture of \$57,980 in subvention overpayments. The audits also generated a subsequent review that resulted in the recapture of \$407,885 in subvention overpayments beginning in fiscal year 2004-05.
- **Fiscal year 2002-03** audits of Sacramento, Ventura, Solano, Kern, Mariposa and Siskiyou Counties resulted in the recapture of \$11,125 in subvention overpayments.

## APPENDIX A. SIGNIFICANT LEGISLATION

### Summary of Significant Legislation Effective January 1, 2004

#### Assembly Bill 1492 (Laird, Chapter 694, Statutes of 2003)

- AB 1492 added Section 51250 to the Government Code. Section 51250 provides an additional and alternate remedy to the contract cancellation petition (§51281-et. seq.) for a material breach of contract. Additionally, AB 1492 amends Section 51257 by extending the Williamson Act lot line adjustment provisions to January 1, 2009.
- Section 51250(b) defines a material breach on land subject to a Williamson Act contract as a commercial, industrial or residential building(s), exceeding 2,500 square feet that is not permissible under the Williamson Act or contract, local uniform rules or ordinances. AB 1492 only applies to structure(s) that have been permitted and constructed after January 1, 2004.
- If upon evidence presented at a public hearing the city/county determines a breach of contract has occurred, the city/county shall either order the landowner to eliminate the breach condition within 60 days or assess a monetary penalty. The monetary penalty shall be 25% of the unrestricted fair market value of the land rendered incompatible by the breach, plus 25% of the value of the incompatible building and any related improvements on the contracted land.
- While it is the County's responsibility to enforce the sanctions contained in Section 51250, the Department is also empowered to take actions against breaches of contract.

### Summary of Significant Legislation Effective January 1, 2005

#### Senate Bill 1820 (Machado, Chapter 794, Statutes of 2004)

- Assessors determine the current fair market valuation of land to determine the cancellation fee required to remove land from a Williamson Act contract. Existing law allowed a petitioner the right to appeal the current fair market valuation of the cancellation fee to the county board of equalization.
- SB 1820 deletes the petitioner's right to appeal and requires the assessor to notify the petitioner and the Department of the current fair market valuation of land to be removed from contract. If either the petitioner or the Department believes the valuation to be inaccurate, either party may request the assessor to conduct a formal review of the current fair market valuation. SB 1820 also sets forth procedures for formal review and any re-computation of the cancellation fee.

## APPENDIX B. ABOUT THE WILLIAMSON ACT

The California Land Conservation Act, better known as the Williamson Act, has been the state's premier agricultural land protection program since its enactment in 1965. Over 16 million of the state's 30 million acres of farm and ranch land are currently protected under the Williamson Act. The Williamson Act statute is located in the California Government Code beginning with Section 51200.

Following World War II, California experienced tremendous population and economic growth. This growth, in tandem with the State's property tax system, led to increased pressures to convert agricultural land to urban use. Rapidly escalating property taxes often presented a prohibitive burden for farmers who wanted to maintain their agricultural operations. In response, the California Legislature passed the Williamson Act in 1965 to preserve agricultural and open space lands by discouraging premature and unnecessary conversion to urban uses. The Williamson Act was then, and remains today, a highly innovative policy that tackles the problem of agricultural land protection through an interrelated set of property tax, land use, and conservation measures.

Fundamentally, the Williamson Act is a State policy administered by local governments. Local governments are not mandated to administer the Act, but those that do have some latitude to tailor the program to suit local goals and objectives. The State's support of the program is strong and enduring – expressed in the language of the Act, in the authority granted to local governments, in the State subventions, and in the recent enhancements to the Act that further promote farmland and open space protection.

A three-way relationship between private landowners, local governments, and the State is central to the Williamson Act. Local governments and landowners voluntarily enter into a contract in which each accepts certain costs in return for other benefits. The landowner forgoes the possibility of development, or converting his or her property into nonagricultural or non-open space use during the term of the contract, in return for lower property taxes. The local government foregoes a portion of its property taxes in return for the planning advantages and values implicit in retaining land in agriculture or open space. The State is also a key player in the program. The State supports local governments and landowners in the form of technical and implementation assistance, interpretation of the Act, subventions to local governments, research of issues and policies, contract enforcement, and preparation of the Williamson Act Status Report.

Williamson Act contracts have an initial term of ten years, with renewal occurring automatically each year (Local governments can establish initial contract terms for longer periods of time). The contracts run with the land and are binding on all successors in interest of the landowner. Only land located within an agricultural preserve is eligible for a Williamson Act contract. An agricultural preserve defines the boundary of an area within which a city or county will enter into contracts with landowners. The boundary is designated by resolution of the board of supervisors (board) or city council (council) having jurisdiction. Preserves are regulated by rules and restrictions designated in the resolution to ensure that the land within the preserve is maintained for agricultural or open space use. The rules of each agricultural preserve specify the uses allowed. Generally, any commercial agricultural use will be permitted within any agricultural preserve. In addition, local governments may identify compatible uses permitted with a use permit. Landowners interested in enrolling land in a contract should contact their local planning department for application forms and instructions.

In August of 1998, Senate Bill 1182 established the Farmland Security Zone (FSZ) provisions of the Williamson Act. An FSZ is an area created within an agricultural preserve by a board upon request by a landowner or group of landowners. FSZ contracts offer landowners greater property tax reduction in return for an initial contract term of twenty years, with renewal occurring automatically each year. Land restricted by an FSZ contract is valued for property assessment purposes at 65 percent of its Williamson Act valuation, or 65 percent of its Proposition 13 valuation, whichever is lower. New special taxes for urban-related services must be levied at an unspecified reduced rate unless the tax directly benefits the land or living improvements. Cities and special districts that provide non-agricultural services are generally prohibited from annexing land enrolled under an FSZ contract. Similarly, school districts are prohibited from taking FSZ lands for school facilities. The FSZ provisions of the Williamson Act begin at Section 51296 of the California Government Code.



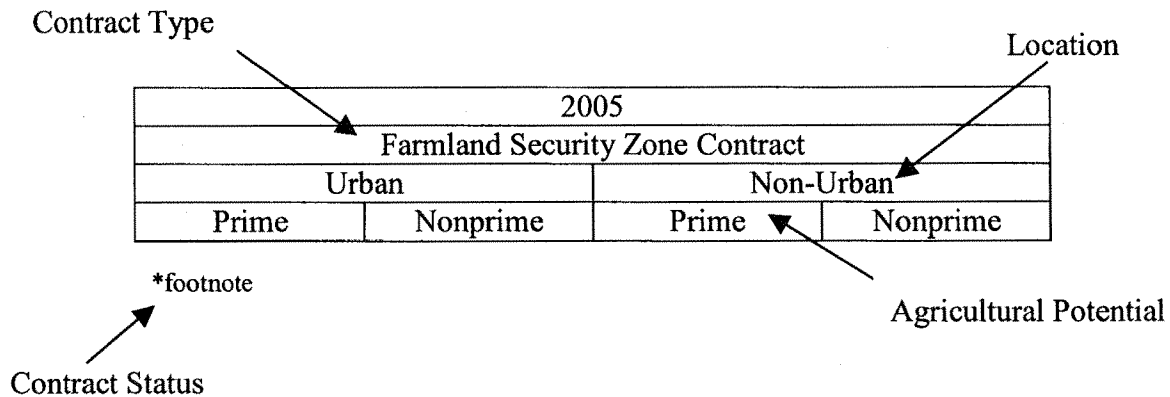
## APPENDIX C. DATA TABLES

### Data Notes

The following charts were omitted since no acreage was reported: Nonrenewals Withdrawn (FSZ, 2004/2005)

### Explanation of Enrollment Categories

The Status Report shows changes to over seventeen categories of enrollment. These enrollment categories may be described by a combination of four factors: contract type, contract status, location, and agricultural potential.



### Contract Type

Contract type refers to the nature of the restriction covering the land. The contract types are:

- Land Conservation Act Contract
- Farmland Security Zone Contract
- Agricultural Conservation Easement
- Other Enforceable Restriction

### Contract Status

Contract status indicates whether the contract is under nonrenewal. If so, then its contract status will be "Nonrenewal"; otherwise, its status will be "Continuing".

- Nonrenewal
- Continuing

### Location

This factor is only relevant to FSZ enrollment for subvention payment purposes. FSZ contracted land that is within a city's sphere of influence, or within three miles of the exterior boundaries of a city's sphere of influence, is "Urban". All other FSZ contracted land is "Non-Urban".

- Urban
- Non-Urban

### Agricultural Potential

Agricultural potential refers to the actual or potential agricultural productivity of the land being restricted. Contracted land that meets the Williamson Act definition of prime agricultural land is "Prime". All other land is "Nonprime".

- Prime
- Nonprime

Total Reported Enrollment (Acres)

Participating Local Jurisdictions	2004									
	Land Conservation Act*		Farmland Security Zone*				Agricultural Conservation Easement		Other Enforceable Restriction	TOTAL
	Prime	Nonprime	Urban		Non-Urban		Prime	Nonprime		
			Prime	Nonprime	Prime	Nonprime				
<b>Counties</b>										
Alameda	5,665	128,746	-	-	-	-	-	-	-	134,411
Amador	5,200	88,659	-	-	-	-	-	-	-	93,859
Butte	109,049	106,061	-	-	-	-	-	-	-	215,110
Calaveras	16,980	117,663	-	-	-	-	-	-	-	134,643
Colusa	65,537	195,453	15,685	699	39,227	2,342	-	-	-	318,944
Contra Costa	9,601	38,453	-	-	-	-	-	-	-	48,054
El Dorado	2,131	32,836	-	-	5	180	-	-	-	35,153
Fresno	1,035,826	486,813	-	-	19,895	3,458	-	-	-	1,545,992
Glenn	61,316	265,996	13,044	201	70,403	2,049	-	-	-	413,009
Humboldt	4,498	191,171	-	-	-	-	-	-	-	195,669
Imperial	115,131	3,391	-	-	-	-	-	-	-	118,522
Kern	643,726	926,907	22,198	-	122,151	-	-	-	-	1,714,983
Kings	293,106	112,577	28,868	227	239,678	9,393	-	-	-	683,849
Lake	5,866	43,638	-	-	-	-	-	-	-	49,504
Lassen	15,894	281,354	546	34	11,850	7,127	-	-	-	316,805
Los Angeles	-	-	-	-	-	-	-	-	40,052	40,052
Madera	209,225	289,179	12,707	382	39,954	2,078	328	-	-	553,852
Marin	1,636	83,461	-	-	290	16,760	-	-	-	102,146
Mariposa	-	203,968	-	-	-	-	-	-	-	203,968
Mendocino	34,461	449,873	-	-	-	-	-	-	-	484,333
Merced	244,096	185,763	-	-	-	-	-	-	-	429,859
Modoc	11,456	71,803	-	-	-	-	-	-	-	83,260
Mono	13,310	-	-	-	-	-	-	-	-	13,310
Monterey	59,254	676,905	7,248	620	16,225	6,379	-	-	453	767,084
Napa	18,018	51,411	-	-	-	-	-	-	-	69,430
Nevada	5,104	470	-	-	-	-	-	-	-	5,574
Orange	730	11,825	-	-	-	-	-	-	-	12,556
Placer	15,442	28,554	-	-	720	307	-	-	-	45,023
Plumas	5,576	72,824	-	-	1,160	3,435	-	-	-	82,996
Riverside	54,185	6,598	-	-	-	-	255	214	-	61,252
Sacramento	86,979	90,339	-	-	-	-	-	-	-	177,318
San Benito	52,655	531,743	-	-	-	-	-	-	-	584,398
San Bernardino	2,251	2,402	-	-	-	-	-	-	-	4,653
San Diego	5,128	67,818	-	-	-	-	-	-	-	72,946
San Joaquin	330,983	146,278	15,023	79	34,384	10,733	-	-	-	537,480
San Luis Obispo	86,492	722,860	298	64	-	-	-	-	-	809,714
San Mateo	3,070	43,988	-	-	-	-	-	-	-	47,058
Santa Barbara	70,187	478,422	-	-	133	-	-	-	-	548,742
Santa Clara	11,167	317,296	-	-	-	-	-	-	-	328,463
Santa Cruz	3,003	16,273	82	32	-	10	-	-	-	19,400
Shasta	16,117	157,549	-	-	-	-	-	-	-	173,666
Sierra	1,970	35,744	-	773	-	2,904	-	-	-	41,391
Siskiyou	90,886	318,716	-	-	-	-	-	-	-	409,602
Solano	120,542	140,788	-	-	-	-	-	-	-	261,330
Sonoma	42,016	231,924	-	-	-	-	-	-	18,215	292,155
Stanislaus	286,898	405,723	-	-	-	-	-	-	-	692,622
Sutter	43,135	11,376	-	-	-	-	-	-	-	54,512
Tehama	51,323	742,555	2,655	2,467	1,190	5,044	-	-	-	805,233
Trinity	-	22,031	-	-	-	-	-	-	-	22,031
Tulare	590,492	511,894	10,727	-	-	-	-	-	686	1,113,799
Tuolumne	-	118,878	-	-	-	-	-	-	-	118,878
Ventura	46,142	79,682	1,514	660	437	244	-	-	-	128,680
Yolo	241,963	176,841	-	-	-	-	127	4	-	418,935
<b>Cities</b>										
Camarillo	75	1	-	-	-	-	-	-	-	76
Hayward	-	384	-	-	-	-	-	-	-	384
Menlo Park	-	255	-	-	-	-	-	-	-	255
Newark	-	2,805	-	-	-	-	-	-	-	2,805
Palo Alto	149	317	-	-	-	-	-	-	-	466
Perris	-	-	-	-	-	-	-	-	-	-
Redlands	-	-	-	-	-	-	-	-	-	-
<b>Totals</b>										
Counties	5,245,421	10,523,476	130,593	6,238	597,702	72,444	709	218	59,406	16,636,207
Cities	224	3,762	-	-	-	-	-	-	-	3,986
<b>Grand Totals</b>	<b>5,245,645</b>	<b>10,527,237</b>	<b>130,593</b>	<b>6,238</b>	<b>597,702</b>	<b>72,444</b>	<b>709</b>	<b>218</b>	<b>59,406</b>	<b>16,640,193</b>

\*Totals include both continuing term and nonrenewal contracts.

Total Reported Enrollment (Acres)

Participating Local Jurisdictions	2005									
	Land Conservation Act*		Farmland Security Zone*				Agricultural Conservation Easement		Other Enforceable Restriction	TOTAL
	Prime	Nonprime	Urban		Non-Urban		Prime	Nonprime		
			Prime	Nonprime	Prime	Nonprime				
Alameda	2,200	133,029	-	-	-	-	-	-	-	135,229
Amador	5,311	88,391	-	-	-	-	-	-	-	93,702
Butte	108,710	106,538	-	-	-	-	-	-	-	215,248
Calaveras	16,911	117,580	-	-	-	-	-	-	-	134,491
Colusa	65,661	193,498	15,881	699	39,227	2,342	-	-	-	317,309
Contra Costa	9,600	38,462	-	-	-	-	-	-	-	48,062
El Dorado	2,148	32,910	-	-	5	180	-	-	-	35,244
Fresno	1,010,717	486,696	-	-	20,611	3,458	-	-	-	1,521,482
Glenn	61,376	266,448	13,199	201	73,114	2,118	-	-	-	416,457
Humboldt	4,545	191,141	-	-	-	-	-	-	-	195,686
Imperial	124,170	3,762	-	-	-	-	-	-	-	127,932
Kern	636,660	924,419	22,884	-	127,390	-	-	-	-	1,711,352
Kings	292,987	112,577	28,868	227	239,823	9,393	-	-	-	683,875
Lake	5,866	43,638	-	-	-	-	-	-	-	49,504
Lassen	16,119	282,913	546	34	11,840	7,137	-	-	-	318,588
Los Angeles	-	-	-	-	-	-	-	-	40,052	40,052
Madera	207,649	288,477	12,727	362	40,285	2,078	328	-	-	551,906
Marin	1,636	84,194	-	-	290	16,772	-	-	-	102,892
Mariposa	-	204,657	-	-	-	-	-	-	-	204,657
Mendocino	34,153	458,967	-	-	-	-	-	-	-	493,121
Merced	246,148	186,958	-	-	-	-	-	-	-	433,107
Modoc	13,068	90,320	-	-	-	-	-	-	-	103,388
Mono	13,310	-	-	-	-	-	-	-	-	13,310
Monterey	61,053	665,486	12,267	1,695	11,194	5,339	-	2,613	-	759,646
Napa	18,124	51,578	-	-	-	-	-	-	-	69,703
Nevada	3,151	470	-	-	-	-	-	-	2,393	6,014
Orange	438	8,921	-	-	-	-	-	-	-	9,358
Placer	15,262	27,998	-	-	-	1,323	-	-	-	44,584
Plumas	5,576	72,824	-	-	1,160	3,435	-	-	-	82,996
Riverside	53,465	6,660	-	-	-	-	255	214	-	60,594
Sacramento	88,340	88,428	-	-	-	-	-	-	-	176,768
San Benito	52,568	531,590	-	-	-	-	-	-	-	584,158
San Bernardino	2,237	2,402	-	-	-	-	-	-	-	4,640
San Diego	5,044	57,845	-	-	-	-	-	-	-	62,889
San Joaquin	331,021	144,518	15,022	79	34,439	10,678	-	-	-	535,757
San Luis Obispo	86,681	704,437	298	82	55	64	-	-	-	791,617
San Mateo	3,070	43,988	-	-	-	-	-	-	-	47,058
Santa Barbara	72,045	476,128	-	-	133	-	-	-	-	548,306
Santa Clara	10,316	303,090	-	-	-	-	-	-	-	313,406
Santa Cruz	3,041	16,268	82	32	-	10	-	-	-	19,433
Shasta	16,779	159,666	-	-	-	-	-	-	-	176,445
Sierra	1,970	35,747	-	773	-	2,904	-	-	-	41,394
Siskiyou	90,560	318,771	-	-	-	-	-	-	-	409,331
Solano	119,099	145,362	-	-	-	-	-	-	-	264,461
Sonoma	41,931	230,342	-	-	-	-	-	-	-	272,272
Stanislaus	287,325	405,298	-	-	-	-	-	-	-	692,622
Sutter	44,212	11,376	-	-	-	-	-	-	-	55,588
Tehama	51,442	739,124	2,655	2,467	1,190	5,044	-	-	-	801,921
Trinity	-	22,031	-	-	-	-	-	-	-	22,031
Tulare	590,287	512,190	11,072	-	-	-	-	-	686	1,114,235
Tuolumne	-	118,885	-	-	-	-	-	-	-	118,885
Ventura	46,249	79,677	1,528	646	437	244	-	-	-	128,781
Yolo	242,569	173,589	158	1	-	-	127	4	-	416,449
<b>Cities</b>										
Camarillo	75	1	-	-	-	-	-	-	-	76
Hayward	-	384	-	-	-	-	-	-	-	384
Menlo Park	-	255	-	-	-	-	-	-	-	255
Newark	-	2,805	-	-	-	-	-	-	-	2,805
Palo Alto	149	317	-	-	-	-	-	-	-	466
Perris	-	-	-	-	-	-	-	-	-	-
Redlands	-	-	-	-	-	-	-	-	-	-
<b>Totals</b>										
Counties	5,222,799	10,490,266	137,185	7,299	601,194	72,521	709	218	45,743	16,577,935
Cities	224	3,762	-	-	-	-	-	-	-	3,986
<b>Grand Totals</b>	<b>5,223,023</b>	<b>10,494,028</b>	<b>137,185</b>	<b>7,299</b>	<b>601,194</b>	<b>72,521</b>	<b>709</b>	<b>218</b>	<b>45,743</b>	<b>16,581,920</b>

\*Totals include both continuing term and nonrenewal contracts.

Farmland Security Zone Transfers (Acres)

Participating Local Jurisdictions	2004									
	Land Conservation Act*		Farmland Security Zone*				Agricultural Conservation Easement		Other Enforceable Restriction	TOTAL
	Prime	Nonprime	Urban		Non-Urban		Prime	Nonprime		
			Prime	Nonprime	Prime	Nonprime				
<b>Counties</b>										
Alameda	-	-	-	-	-	-	-	-	-	-
Amador	-	-	-	-	-	-	-	-	-	-
Butte	-	-	-	-	-	-	-	-	-	-
Calaveras	-	-	-	-	-	-	-	-	-	-
Colusa	(994)	(65)	994	65	-	-	-	-	-	(0)
Contra Costa	-	-	-	-	-	-	-	-	-	-
El Dorado	-	-	-	-	-	-	-	-	-	-
Fresno	(6,649)	(195)	-	-	6,649	195	-	-	-	0
Glenn	(218)	-	-	-	218	-	-	-	-	-
Humboldt	-	-	-	-	-	-	-	-	-	-
Imperial	-	-	-	-	-	-	-	-	-	-
Kern	(4,399)	-	-	-	4,399	-	-	-	-	-
Kings	(13,398)	(4,669)	313	-	12,446	5,307	-	-	-	0
Lake	-	-	-	-	-	-	-	-	-	-
Lassen	(582)	(107)	-	-	599	90	-	-	-	(0)
Los Angeles	-	-	-	-	-	-	-	-	-	-
Madera	(1,370)	-	556	-	815	-	-	-	-	-
Marin	-	-	-	-	-	-	-	-	-	-
Mariposa	-	-	-	-	-	-	-	-	-	-
Mendocino	-	-	-	-	-	-	-	-	-	-
Merced	-	-	-	-	-	-	-	-	-	-
Modoc	-	-	-	-	-	-	-	-	-	-
Mono	-	-	-	-	-	-	-	-	-	-
Monterey	(485)	(100)	199	-	286	100	-	-	-	0
Napa	-	-	-	-	-	-	-	-	-	-
Nevada	-	-	-	-	-	-	-	-	-	-
Orange	-	-	-	-	-	-	-	-	-	-
Placer	-	-	-	-	-	-	-	-	-	-
Plumas	-	-	-	-	-	-	-	-	-	-
Riverside	-	-	-	-	-	-	-	-	-	-
Sacramento	-	-	-	-	-	-	-	-	-	-
San Benito	-	-	-	-	-	-	-	-	-	-
San Bernardino	-	-	-	-	-	-	-	-	-	-
San Diego	-	-	-	-	-	-	-	-	-	-
San Joaquin	-	(93)	-	-	93	-	-	-	-	-
San Luis Obispo	(298)	(64)	298	64	-	-	-	-	-	-
San Mateo	-	-	-	-	-	-	-	-	-	-
Santa Barbara	-	-	-	-	-	-	-	-	-	-
Santa Clara	-	-	-	-	-	-	-	-	-	-
Santa Cruz	-	-	-	-	-	-	-	-	-	-
Shasta	-	-	-	-	-	-	-	-	-	-
Sierra	-	-	-	-	-	-	-	-	-	-
Siskiyou	-	-	-	-	-	-	-	-	-	-
Solano	-	-	-	-	-	-	-	-	-	-
Sonoma	-	-	-	-	-	-	-	-	-	-
Stanislaus	-	-	-	-	-	-	-	-	-	-
Sutter	-	-	-	-	-	-	-	-	-	-
Tehama	-	-	-	-	-	-	-	-	-	-
Trinity	-	-	-	-	-	-	-	-	-	-
Tulare	(1,420)	-	1,420	-	-	-	-	-	-	-
Tuolumne	-	-	-	-	-	-	-	-	-	-
Ventura	(118)	(384)	103	358	16	26	-	-	-	0
Yolo	-	-	-	-	-	-	-	-	-	-
<b>Cities</b>										
Camarillo	-	-	-	-	-	-	-	-	-	-
Hayward	-	-	-	-	-	-	-	-	-	-
Menlo Park	-	-	-	-	-	-	-	-	-	-
Newark	-	-	-	-	-	-	-	-	-	-
Palo Alto	-	-	-	-	-	-	-	-	-	-
Perris	-	-	-	-	-	-	-	-	-	-
Redlands	-	-	-	-	-	-	-	-	-	-
<b>Totals</b>										
Counties	(29,931)	(5,678)	3,883	488	25,520	5,718	-	-	-	(0)
Cities	-	-	-	-	-	-	-	-	-	-
<b>Grand Totals</b>	<b>(29,931)</b>	<b>(5,678)</b>	<b>3,883</b>	<b>488</b>	<b>25,520</b>	<b>5,718</b>	<b>-</b>	<b>-</b>	<b>-</b>	<b>(0)</b>

\*Totals include both continuing term and nonrenewal contracts.

Farmland Security Zone Transfers (Acres)

Participating Local Jurisdictions	2005									
	Land Conservation Act*		Farmland Security Zone*				Agricultural Conservation Easement		Other Enforceable Restriction	TOTAL
	Prime	Nonprime	Urban		Non-Urban		Prime	Nonprime		
			Prime	Nonprime	Prime	Nonprime				
<b>Counties</b>										
Alameda	-	-	-	-	-	-	-	-	-	-
Amador	-	-	-	-	-	-	-	-	-	-
Butte	-	-	-	-	-	-	-	-	-	-
Calaveras	-	-	-	-	-	-	-	-	-	-
Colusa	-	-	-	-	-	-	-	-	-	-
Contra Costa	-	-	-	-	-	-	-	-	-	-
El Dorado	-	-	-	-	-	-	-	-	-	-
Fresno	(831)	-	-	-	831	-	-	-	-	-
Glenn	-	-	-	-	-	-	-	-	-	-
Humboldt	-	-	-	-	-	-	-	-	-	-
Imperial	-	-	-	-	-	-	-	-	-	-
Kern	(5,619)	-	685	-	4,934	-	-	-	-	(0)
Kings	(145)	-	-	-	145	-	-	-	-	-
Lake	-	-	-	-	-	-	-	-	-	-
Lassen	-	-	-	-	-	-	-	-	-	-
Los Angeles	-	-	-	-	-	-	-	-	-	-
Madera	(331)	-	-	-	331	-	-	-	-	-
Marin	-	-	-	-	-	-	-	-	-	-
Mariposa	-	-	-	-	-	-	-	-	-	-
Mendocino	-	-	-	-	-	-	-	-	-	-
Merced	-	-	-	-	-	-	-	-	-	-
Modoc	-	-	-	-	-	-	-	-	-	-
Mono	-	-	-	-	-	-	-	-	-	-
Monterey	(159)	-	-	-	159	-	-	-	-	-
Napa	-	-	-	-	-	-	-	-	-	-
Nevada	-	-	-	-	-	-	-	-	-	-
Orange	-	-	-	-	-	-	-	-	-	-
Placer	-	-	-	-	-	-	-	-	-	-
Plumas	-	-	-	-	-	-	-	-	-	-
Riverside	-	-	-	-	-	-	-	-	-	-
Sacramento	-	-	-	-	-	-	-	-	-	-
San Benito	-	-	-	-	-	-	-	-	-	-
San Bernardino	-	-	-	-	-	-	-	-	-	-
San Diego	-	-	-	-	-	-	-	-	-	-
San Joaquin	-	-	-	-	-	-	-	-	-	-
San Luis Obispo	(55)	(64)	-	-	55	64	-	-	-	-
San Mateo	-	-	-	-	-	-	-	-	-	-
Santa Barbara	-	-	-	-	-	-	-	-	-	-
Santa Clara	-	-	-	-	-	-	-	-	-	-
Santa Cruz	-	-	-	-	-	-	-	-	-	-
Shasta	-	-	-	-	-	-	-	-	-	-
Sierra	-	-	-	-	-	-	-	-	-	-
Siskiyou	-	-	-	-	-	-	-	-	-	-
Solano	-	-	-	-	-	-	-	-	-	-
Sonoma	-	-	-	-	-	-	-	-	-	-
Stanislaus	-	-	-	-	-	-	-	-	-	-
Sutter	-	-	-	-	-	-	-	-	-	-
Tehama	-	-	-	-	-	-	-	-	-	-
Trinity	-	-	-	-	-	-	-	-	-	-
Tulare	(81)	-	81	-	-	-	-	-	-	-
Tuolumne	-	-	-	-	-	-	-	-	-	-
Ventura	-	-	-	-	-	-	-	-	-	-
Yolo	(158)	(1)	158	1	-	-	-	-	-	-
<b>Cities</b>										
Camarillo	-	-	-	-	-	-	-	-	-	-
Hayward	-	-	-	-	-	-	-	-	-	-
Menlo Park	-	-	-	-	-	-	-	-	-	-
Newark	-	-	-	-	-	-	-	-	-	-
Palo Alto	-	-	-	-	-	-	-	-	-	-
Perris	-	-	-	-	-	-	-	-	-	-
Redlands	-	-	-	-	-	-	-	-	-	-
<b>Totals</b>										
Counties	(7,379)	(65)	924	1	6,455	64	-	-	-	(0)
Cities	-	-	-	-	-	-	-	-	-	-
<b>Grand Totals</b>	<b>(7,379)</b>	<b>(65)</b>	<b>924</b>	<b>1</b>	<b>6,455</b>	<b>64</b>	<b>-</b>	<b>-</b>	<b>-</b>	<b>(0)</b>

\*Totals include both continuing term and nonrenewal contracts.

## Cumulative Nonrenewal Acreage (Land Conservation Act)

Participating Local Jurisdictions	2004			2005		
	Land Conservation Act		TOTAL	Land Conservation Act		TOTAL
	Prime	Nonprime		Prime	Nonprime	
<b>Counties</b>						
Alameda	828	179	1,008	-	830	830
Amador	6	3,234	3,240	3	3,234	3,237
Butte	112	255	367	382	546	928
Calaveras	169	2,210	2,380	180	3,641	3,821
Colusa	1,156	32	1,187	2,016	32	2,047
Contra Costa	178	1,419	1,597	308	1,601	1,909
El Dorado	-	1,701	1,701	-	1,858	1,858
Fresno	2,925	508	3,433	5,274	1,233	6,507
Glenn	43	477	520	79	817	896
Humboldt	-	184	184	-	184	184
Imperial	-	-	-	2,070	-	2,070
Kern	15,769	31,150	46,919	19,055	29,282	48,337
Kings	4,102	986	5,088	5,432	986	6,418
Lake	57	329	385	265	347	612
Lassen	-	407	407	-	10	10
Los Angeles	-	-	-	-	-	-
Madera	2,506	4,858	7,365	3,093	4,212	7,306
Marin	39	243	281	39	243	281
Mariposa	-	88	88	-	88	88
Mendocino	119	11,980	12,099	118	11,943	12,061
Merced	400	4	404	1,002	95	1,097
Modoc	-	-	-	-	-	-
Mono	-	-	-	-	-	-
Monterey	2,274	9,200	11,474	2,246	2,102	4,348
Napa	710	491	1,201	710	491	1,201
Nevada	-	-	-	-	-	-
Orange	261	7,843	8,104	406	8,727	9,133
Placer	2,890	7,432	10,321	3,797	9,010	12,807
Plumas	6	6,301	6,307	6	6,301	6,307
Riverside	2,787	696	3,483	2,925	706	3,631
Sacramento	1,262	6,650	7,912	1,641	6,441	8,082
San Benito	701	5,244	5,945	681	5,447	6,128
San Bernardino	89	31	120	76	31	107
San Diego	220	80	300	197	82	279
San Joaquin	20,869	3,121	23,989	25,940	5,433	31,373
San Luis Obispo	2,372	12,654	15,025	2,681	10,307	12,988
San Mateo	283	15	298	283	15	298
Santa Barbara	1,779	17,546	19,325	1,850	34,644	36,494
Santa Clara	870	8,532	9,402	700	5,572	6,272
Santa Cruz	22	144	166	61	139	199
Shasta	-	3,606	3,606	-	1,842	1,842
Sierra	-	948	948	-	948	948
Siskiyou	578	569	1,146	155	443	598
Solano	246	1,535	1,781	475	1,928	2,403
Sonoma	136	1,229	1,365	109	804	914
Stanislaus	6,676	6,268	12,944	11,825	22,081	33,906
Sutter	32	-	32	32	-	32
Tehama	1,158	8,521	9,679	2,966	12,821	15,786
Trinity	-	231	231	-	231	231
Tulare	4,273	370	4,643	5,917	370	6,287
Tuolumne	-	544	544	-	1,346	1,346
Ventura	577	2,171	2,748	739	2,174	2,914
Yolo	4,668	3,113	7,781	5,151	2,082	7,233
<b>Cities</b>						
Camarillo	-	-	-	-	-	-
Hayward	-	-	-	-	-	-
Menlo Park	-	-	-	-	-	-
Newark	-	-	-	-	-	-
Palo Alto	-	13	13	-	13	13
Perris	-	-	-	-	-	-
Redlands	-	-	-	-	-	-
<b>Totals</b>						
Counties	84,145	175,327	259,472	110,885	203,699	314,583
Cities	-	13	13	-	13	13
<b>Grand Totals</b>	<b>84,145</b>	<b>175,340</b>	<b>259,485</b>	<b>110,885</b>	<b>203,712</b>	<b>314,597</b>



Cumulative Nonrenewal Acreage (Farmland Security Zone)

Participating Local Jurisdictions	2004								TOTAL
	Farmland Security Zone Contracts								
	First 10-years				Last 10-years				
	Urban		Non-Urban		Urban		Non-Urban		
Prime	Nonprime	Prime	Nonprime	Prime	Nonprime	Prime	Nonprime		
<b>Counties</b>									
Alameda	-	-	-	-	-	-	-	-	-
Amador	-	-	-	-	-	-	-	-	-
Butte	-	-	-	-	-	-	-	-	-
Calaveras	-	-	-	-	-	-	-	-	-
Colusa	-	-	-	-	-	-	-	-	-
Contra Costa	-	-	-	-	-	-	-	-	-
El Dorado	-	-	-	-	-	-	-	-	-
Fresno	-	-	-	-	-	-	-	-	-
Glenn	-	-	-	-	-	-	-	-	-
Humboldt	-	-	-	-	-	-	-	-	-
Imperial	-	-	-	-	-	-	-	-	-
Kern	-	-	-	-	-	-	-	-	-
Kings	-	-	64	-	-	-	-	-	64
Lake	-	-	-	-	-	-	-	-	-
Lassen	-	-	-	-	-	-	-	-	-
Los Angeles	-	-	-	-	-	-	-	-	-
Madera	-	-	-	-	-	-	-	-	-
Marin	-	-	-	-	-	-	-	-	-
Mariposa	-	-	-	-	-	-	-	-	-
Mendocino	-	-	-	-	-	-	-	-	-
Merced	-	-	-	-	-	-	-	-	-
Modoc	-	-	-	-	-	-	-	-	-
Mono	-	-	-	-	-	-	-	-	-
Monterey	-	-	-	-	-	-	-	-	-
Napa	-	-	-	-	-	-	-	-	-
Nevada	-	-	-	-	-	-	-	-	-
Orange	-	-	-	-	-	-	-	-	-
Placer	-	-	-	-	-	-	-	-	-
Plumas	-	-	-	-	-	-	-	-	-
Riverside	-	-	-	-	-	-	-	-	-
Sacramento	-	-	-	-	-	-	-	-	-
San Benito	-	-	-	-	-	-	-	-	-
San Bernardino	-	-	-	-	-	-	-	-	-
San Diego	-	-	-	-	-	-	-	-	-
San Joaquin	-	-	-	-	-	-	-	-	-
San Luis Obispo	-	-	-	-	-	-	-	-	-
San Mateo	-	-	-	-	-	-	-	-	-
Santa Barbara	-	-	-	-	-	-	-	-	-
Santa Clara	-	-	-	-	-	-	-	-	-
Santa Cruz	-	-	-	-	-	-	-	-	-
Shasta	-	-	-	-	-	-	-	-	-
Sierra	-	-	-	-	-	-	-	-	-
Siskiyou	-	-	-	-	-	-	-	-	-
Solano	-	-	-	-	-	-	-	-	-
Sonoma	-	-	-	-	-	-	-	-	-
Stanislaus	-	-	-	-	-	-	-	-	-
Sutter	-	-	-	-	-	-	-	-	-
Tehama	-	-	-	-	-	-	-	-	-
Trinity	-	-	-	-	-	-	-	-	-
Tulare	-	-	-	-	-	-	-	-	-
Tuolumne	-	-	-	-	-	-	-	-	-
Ventura	-	-	-	-	-	-	-	-	-
Yolo	-	-	-	-	-	-	-	-	-
<b>Cities</b>									
Camarillo	-	-	-	-	-	-	-	-	-
Hayward	-	-	-	-	-	-	-	-	-
Menlo Park	-	-	-	-	-	-	-	-	-
Newark	-	-	-	-	-	-	-	-	-
Palo Alto	-	-	-	-	-	-	-	-	-
Perris	-	-	-	-	-	-	-	-	-
Redlands	-	-	-	-	-	-	-	-	-
<b>Totals</b>									
Counties	-	-	64	-	-	-	-	-	64
Cities	-	-	-	-	-	-	-	-	-
<b>Grand Totals</b>	-	-	64	-	-	-	-	-	64

Cumulative Nonrenewal Acreage (Farmland Security Zone)

Participating Local Jurisdictions	2005								TOTAL
	Farmland Security Zone Contracts								
	First 10-years				Last 10-years				
	Urban		Non-Urban		Urban		Non-Urban		
Prime	Nonprime	Prime	Nonprime	Prime	Nonprime	Prime	Nonprime		
<b>Counties</b>									
Alameda	-	-	-	-	-	-	-	-	-
Amador	-	-	-	-	-	-	-	-	-
Butte	-	-	-	-	-	-	-	-	-
Calaveras	-	-	-	-	-	-	-	-	-
Colusa	-	-	-	-	-	-	-	-	-
Contra Costa	-	-	-	-	-	-	-	-	-
El Dorado	-	-	-	-	-	-	-	-	-
Fresno	-	-	-	-	-	-	-	-	-
Glenn	-	-	16	-	-	-	-	-	16
Humboldt	-	-	-	-	-	-	-	-	-
Imperial	-	-	-	-	-	-	-	-	-
Kern	-	-	1	-	-	-	-	-	1
Kings	9	-	97	-	-	-	-	-	106
Lake	-	-	-	-	-	-	-	-	-
Lassen	-	-	-	-	-	-	-	-	-
Los Angeles	-	-	-	-	-	-	-	-	-
Madera	-	-	160	-	-	-	-	-	160
Marin	-	-	-	-	-	-	-	-	-
Mariposa	-	-	-	-	-	-	-	-	-
Mendocino	-	-	-	-	-	-	-	-	-
Merced	-	-	-	-	-	-	-	-	-
Modoc	-	-	-	-	-	-	-	-	-
Mono	-	-	-	-	-	-	-	-	-
Monterey	-	-	-	-	-	-	-	-	-
Napa	-	-	-	-	-	-	-	-	-
Nevada	-	-	-	-	-	-	-	-	-
Orange	-	-	-	-	-	-	-	-	-
Placer	-	-	-	-	-	-	-	-	-
Plumas	-	-	-	-	-	-	-	-	-
Riverside	-	-	-	-	-	-	-	-	-
Sacramento	-	-	-	-	-	-	-	-	-
San Benito	-	-	-	-	-	-	-	-	-
San Bernardino	-	-	-	-	-	-	-	-	-
San Diego	-	-	-	-	-	-	-	-	-
San Joaquin	-	-	-	-	-	-	-	-	-
San Luis Obispo	-	-	-	-	-	-	-	-	-
San Mateo	-	-	-	-	-	-	-	-	-
Santa Barbara	-	-	-	-	-	-	-	-	-
Santa Clara	-	-	-	-	-	-	-	-	-
Santa Cruz	-	-	-	-	-	-	-	-	-
Shasta	-	-	-	-	-	-	-	-	-
Sierra	-	-	-	-	-	-	-	-	-
Siskiyou	-	-	-	-	-	-	-	-	-
Solano	-	-	-	-	-	-	-	-	-
Sonoma	-	-	-	-	-	-	-	-	-
Stanislaus	-	-	-	-	-	-	-	-	-
Sutter	-	-	-	-	-	-	-	-	-
Tehama	-	-	-	-	-	-	-	-	-
Trinity	-	-	-	-	-	-	-	-	-
Tulare	-	-	-	-	-	-	-	-	-
Tuolumne	-	-	-	-	-	-	-	-	-
Ventura	-	-	-	-	-	-	-	-	-
Yolo	-	-	-	-	-	-	-	-	-
<b>Cities</b>									
Camarillo	-	-	-	-	-	-	-	-	-
Hayward	-	-	-	-	-	-	-	-	-
Menlo Park	-	-	-	-	-	-	-	-	-
Newark	-	-	-	-	-	-	-	-	-
Palo Alto	-	-	-	-	-	-	-	-	-
Perris	-	-	-	-	-	-	-	-	-
Redlands	-	-	-	-	-	-	-	-	-
<b>Totals</b>									
Counties	9	-	274	-	-	-	-	-	283
Cities	-	-	-	-	-	-	-	-	-
<b>Grand Totals</b>	<b>9</b>	<b>-</b>	<b>274</b>	<b>-</b>	<b>-</b>	<b>-</b>	<b>-</b>	<b>-</b>	<b>283</b>

New Enrollments (Acres)

Participating Local Jurisdictions	2004									
	Land Conservation Act		Farmland Security Zone				Agricultural Conservation Easement		Other Enforceable Restriction	TOTAL
	Prime	Nonprime	Urban		Non-Urban		Prime	Nonprime		
			Prime	Nonprime	Prime	Nonprime				
<b>Counties</b>										
Alameda	-	503	-	-	-	-	-	-	-	503
Amador	-	-	-	-	-	-	-	-	-	-
Butte	2,190	320	-	-	-	-	-	-	-	2,510
Calaveras	425	1,469	-	-	-	-	-	-	-	1,894
Colusa	4,299	30	1,219	24	39	-	-	-	-	5,611
Contra Costa	-	-	-	-	-	-	-	-	-	-
El Dorado	46	212	-	-	-	-	-	-	-	258
Fresno	1,570	-	-	-	528	-	-	-	-	2,098
Glenn	958	-	67	-	3,585	204	-	-	-	4,814
Humboldt	-	130	-	-	-	-	-	-	-	130
Imperial	7,155	118	-	-	-	-	-	-	-	7,273
Kern	972	179	-	-	311	-	-	-	-	1,462
Kings	8	-	200	-	854	24	-	-	-	1,086
Lake	-	-	-	-	-	-	-	-	-	-
Lassen	582	8,671	-	-	-	-	-	-	-	9,253
Los Angeles	-	-	-	-	-	-	-	-	-	-
Madera	441	475	32	-	117	-	-	-	-	1,066
Marin	-	-	-	-	-	1,010	-	-	-	1,010
Mariposa	-	160	-	-	-	-	-	-	-	160
Mendocino	376	859	-	-	-	-	-	-	-	1,236
Merced	4,131	9,243	-	-	-	-	-	-	-	13,374
Modoc	4,493	48,036	-	-	-	-	-	-	-	52,529
Mono	710	-	-	-	-	-	-	-	-	710
Monterey	70	1,537	446	58	-	207	-	-	-	2,318
Napa	158	642	-	-	-	-	-	-	-	800
Nevada	-	-	-	-	-	-	-	-	-	-
Orange	-	-	-	-	-	-	-	-	-	-
Placer	-	-	-	-	720	-	-	-	-	720
Plumas	-	-	-	-	-	-	-	-	-	-
Riverside	112	-	-	-	-	-	-	-	-	112
Sacramento	278	1,340	-	-	-	-	-	-	-	1,618
San Benito	55	250	-	-	-	-	-	-	-	305
San Bernardino	-	-	-	-	-	-	-	-	-	-
San Diego	-	160	-	-	-	-	-	-	-	160
San Joaquin	247	-	-	-	-	-	-	-	-	247
San Luis Obispo	596	2,933	-	-	-	-	-	-	-	3,528
San Mateo	-	-	-	-	-	-	-	-	-	-
Santa Barbara	298	414	-	-	-	-	-	-	-	712
Santa Clara	29	631	-	-	-	-	-	-	-	660
Santa Cruz	-	-	-	-	-	-	-	-	-	-
Shasta	160	1,152	-	-	-	-	-	-	-	1,312
Sierra	32	694	-	-	-	210	-	-	-	937
Siskiyou	264	212	-	-	-	-	-	-	-	476
Solano	581	1,913	-	-	-	-	-	-	-	2,494
Sonoma	1,219	3,837	-	-	-	-	-	-	-	5,056
Stanislaus	61	39	-	-	-	-	-	-	-	100
Sutter	3,245	-	-	-	-	-	-	-	-	3,245
Tehama	70	3,573	-	-	-	-	-	-	-	3,643
Trinity	-	-	-	-	-	-	-	-	-	-
Tulare	242	470	268	-	-	-	-	-	-	980
Tuolumne	-	628	-	-	-	-	-	-	-	628
Ventura	207	7	-	-	13	4	-	-	-	230
Yolo	212	128	-	-	-	-	-	-	-	340
<b>Cities</b>										
Camarillo	-	-	-	-	-	-	-	-	-	-
Hayward	-	-	-	-	-	-	-	-	-	-
Menlo Park	-	-	-	-	-	-	-	-	-	-
Newark	-	-	-	-	-	-	-	-	-	-
Palo Alto	-	-	-	-	-	-	-	-	-	-
Perris	-	-	-	-	-	-	-	-	-	-
Redlands	-	-	-	-	-	-	-	-	-	-
<b>Totals</b>										
Counties	36,491	90,966	2,232	82	6,167	1,660	-	-	-	137,598
Cities	-	-	-	-	-	-	-	-	-	-
<b>Grand Totals</b>	<b>36,491</b>	<b>90,966</b>	<b>2,232</b>	<b>82</b>	<b>6,167</b>	<b>1,660</b>	<b>-</b>	<b>-</b>	<b>-</b>	<b>137,598</b>

New Enrollments (Acres)

Participating Local Jurisdictions	2005									
	Land Conservation Act		Farmland Security Zone				Agricultural Conservation Easement		Other Enforceable Restriction	TOTAL
	Prime	Nonprime	Urban		Non-Urban		Prime	Nonprime		
			Prime	Nonprime	Prime	Nonprime				
<b>Counties</b>										
Alameda	-	118	-	-	-	-	-	-	-	118
Amador	78	248	-	-	-	-	-	-	-	326
Butte	-	-	-	-	-	-	-	-	-	-
Calaveras	57	80	-	-	-	-	-	-	-	137
Colusa	250	30	-	-	-	-	-	-	-	280
Contra Costa	-	-	-	-	-	-	-	-	-	-
El Dorado	51	40	-	-	-	-	-	-	-	91
Fresno	575	51	-	-	37	-	-	-	-	662
Glenn	59	452	155	-	2,712	69	-	-	-	3,447
Humboldt	-	-	-	-	-	-	-	-	-	-
Imperial	9,039	371	-	-	-	-	-	-	-	9,410
Kern	333	159	-	-	301	-	-	-	-	794
Kings	318	-	-	-	-	-	-	-	-	318
Lake	-	-	-	-	-	-	-	-	-	-
Lassen	191	1,419	-	-	-	-	-	-	-	1,610
Los Angeles	-	-	-	-	-	-	-	-	-	-
Madera	-	280	-	-	-	-	-	-	-	280
Marin	-	733	-	-	-	13	-	-	-	746
Mariposa	-	847	-	-	-	-	-	-	-	847
Mendocino	68	10,044	-	-	-	-	-	-	-	10,112
Merced	1,228	2,142	-	-	-	-	-	-	-	3,370
Modoc	1,657	17,918	-	-	-	-	-	-	-	19,575
Mono	-	-	-	-	-	-	-	-	-	-
Monterey	517	1,904	29	79	131	371	-	-	-	3,030
Napa	36	68	-	-	-	-	-	-	-	104
Nevada	-	-	-	-	-	-	-	-	440	440
Orange	-	-	-	-	-	-	-	-	-	-
Placer	-	-	-	-	-	-	-	-	-	-
Plumas	-	-	-	-	-	-	-	-	-	-
Riverside	-	-	-	-	-	-	-	-	-	-
Sacramento	-	139	-	-	-	-	-	-	-	139
San Benito	-	-	-	-	-	-	-	-	-	-
San Bernardino	-	-	-	-	-	-	-	-	-	-
San Diego	-	-	-	-	-	-	-	-	-	-
San Joaquin	438	320	-	-	-	-	-	-	-	758
San Luis Obispo	164	940	-	-	-	-	-	-	-	1,104
San Mateo	-	-	-	-	-	-	-	-	-	-
Santa Barbara	-	-	-	-	-	-	-	-	-	-
Santa Clara	-	625	-	-	-	-	-	-	-	625
Santa Cruz	-	-	-	-	-	-	-	-	-	-
Shasta	647	2,622	-	-	-	-	-	-	-	3,269
Sierra	-	-	-	-	-	-	-	-	-	-
Siskiyou	141	181	-	-	-	-	-	-	-	322
Solano	569	3,581	-	-	-	-	-	-	-	4,150
Sonoma	104	227	-	-	-	-	-	-	-	331
Stanislaus	525	13	-	-	-	-	-	-	-	537
Sutter	1,077	-	-	-	-	-	-	-	-	1,077
Tehama	-	89	-	-	-	-	-	-	-	89
Trinity	-	-	-	-	-	-	-	-	-	-
Tulare	583	456	264	-	-	-	-	-	-	1,303
Tuolumne	-	-	-	-	-	-	-	-	-	-
Ventura	112	17	-	-	-	-	-	-	-	129
Yolo	-	-	-	-	-	-	-	-	-	-
<b>Cities</b>										
Camarillo	-	-	-	-	-	-	-	-	-	-
Hayward	-	-	-	-	-	-	-	-	-	-
Menlo Park	-	-	-	-	-	-	-	-	-	-
Newark	-	-	-	-	-	-	-	-	-	-
Palo Alto	-	-	-	-	-	-	-	-	-	-
Perris	-	-	-	-	-	-	-	-	-	-
Redlands	-	-	-	-	-	-	-	-	-	-
<b>Totals</b>										
Counties	18,818	46,111	448	79	3,180	452	-	-	440	69,529
Cities	-	-	-	-	-	-	-	-	-	-
<b>Grand Totals</b>	<b>18,818</b>	<b>46,111</b>	<b>448</b>	<b>79</b>	<b>3,180</b>	<b>452</b>	<b>-</b>	<b>-</b>	<b>440</b>	<b>69,529</b>

Nonrenewal Initiations (Acres)

Participating Local Jurisdictions	2004							2005						
	Land Conservation Act		Farmland Security Zone				TOTAL	Land Conservation Act		Farmland Security Zone				TOTAL
			Urban		Non-Urban					Urban		Non-Urban		
	Prime	Nonprime	Prime	Nonprime	Prime	Nonprime	Prime	Nonprime	Prime	Nonprime	Prime	Nonprime		
<b>Counties</b>														
Alameda	-	-	-	-	-	-	-	372	-	-	-	-	-	372
Amador	-	761	-	-	-	-	761	-	-	-	-	-	-	-
Butte	53	-	-	-	-	-	53	270	291	-	-	-	-	561
Calaveras	2	761	-	-	-	-	763	3	1,583	-	-	-	-	1,586
Colusa	524	-	-	-	-	-	524	860	-	-	-	-	-	860
Contra Costa	-	-	-	-	-	-	-	130	182	-	-	-	-	312
El Dorado	-	-	-	-	-	-	-	-	160	-	-	-	-	160
Fresno	372	-	-	-	-	-	372	2,603	775	-	-	-	-	3,379
Glenn	-	-	-	-	-	-	-	36	340	-	-	16	-	392
Humboldt	-	-	-	-	-	-	-	-	-	-	-	-	-	-
Imperial	-	-	-	-	-	-	-	2,070	-	-	-	-	-	2,070
Kern	3,424	16,545	-	-	1	-	19,970	3,375	727	-	-	-	-	4,102
Kings	104	-	-	-	-	-	104	1,536	-	9	-	33	-	1,578
Lake	-	-	-	-	-	-	-	208	18	-	-	-	-	227
Lassen	-	-	-	-	-	-	-	-	1	-	-	-	-	1
Los Angeles	-	-	-	-	-	-	-	-	-	-	-	-	-	-
Madera	631	1,733	-	-	-	-	2,363	1,200	943	-	-	160	-	2,303
Marin	-	-	-	-	-	-	-	-	-	-	-	-	-	-
Mariposa	-	23	-	-	-	-	23	-	-	-	-	-	-	-
Mendocino	-	-	-	-	-	-	-	-	-	-	-	-	-	-
Merced	400	4	-	-	-	-	404	602	91	-	-	-	-	693
Modoc	-	-	-	-	-	-	-	-	-	-	-	-	-	-
Mono	-	-	-	-	-	-	-	-	-	-	-	-	-	-
Monterey	332	-	-	-	-	-	332	10	-	-	-	-	-	10
Napa	-	-	-	-	-	-	-	-	-	-	-	-	-	-
Nevada	-	-	-	-	-	-	-	-	-	-	-	-	-	-
Orange	-	-	-	-	-	-	-	-	-	-	-	-	-	-
Placer	792	717	-	-	-	-	1,509	1,318	1,258	-	-	-	-	2,576
Plumas	-	-	-	-	-	-	-	-	-	-	-	-	-	-
Riverside	1,686	41	-	-	-	-	1,727	354	5	-	-	-	-	359
Sacramento	1,708	1,621	-	-	-	-	3,329	507	155	-	-	-	-	662
San Benito	46	300	-	-	-	-	346	64	367	-	-	-	-	431
San Bernardino	-	-	-	-	-	-	-	-	-	-	-	-	-	-
San Diego	41	16	-	-	-	-	57	29	2	-	-	-	-	31
San Joaquin	3,101	78	-	-	-	-	3,179	5,980	3,843	-	-	-	-	9,824
San Luis Obispo	878	2,525	-	-	-	-	3,403	908	532	-	-	-	-	1,440
San Mateo	-	-	-	-	-	-	-	-	-	-	-	-	-	-
Santa Barbara	667	12,726	-	-	-	-	13,393	94	18,154	-	-	-	-	18,248
Santa Clara	165	104	-	-	-	-	269	254	858	-	-	-	-	1,112
Santa Cruz	-	-	-	-	-	-	-	-	-	-	-	-	-	-
Shasta	-	-	-	-	-	-	-	-	-	-	-	-	-	-
Sierra	-	-	-	-	-	-	-	-	-	-	-	-	-	-
Siskiyou	7	-	-	-	-	-	7	70	-	-	-	-	-	70
Solano	40	155	-	-	-	-	196	336	393	-	-	-	-	729
Sonoma	-	-	-	-	-	-	-	-	155	-	-	-	-	155
Stanislaus	2,201	65	-	-	-	-	2,266	5,193	15,808	-	-	-	-	21,001
Sutter	-	-	-	-	-	-	-	-	-	-	-	-	-	-
Tehama	647	953	-	-	-	-	1,600	1,821	5,277	-	-	-	-	7,098
Trinity	-	231	-	-	-	-	231	-	-	-	-	-	-	-
Tulare	1,002	-	-	-	-	-	1,002	1,778	-	-	-	-	-	1,778
Tuolumne	-	20	-	-	-	-	20	-	802	-	-	-	-	802
Ventura	37	827	-	-	-	-	863	166	3	-	-	-	-	169
Yolo	1,836	96	-	-	-	-	1,932	639	1,430	-	-	-	-	2,069
<b>Cities</b>														
Camarillo	-	-	-	-	-	-	-	-	-	-	-	-	-	-
Hayward	-	-	-	-	-	-	-	-	-	-	-	-	-	-
Menlo Park	-	-	-	-	-	-	-	-	-	-	-	-	-	-
Newark	-	-	-	-	-	-	-	-	-	-	-	-	-	-
Palo Alto	-	-	-	-	-	-	-	-	-	-	-	-	-	-
Perris	-	-	-	-	-	-	-	-	-	-	-	-	-	-
Redlands	-	-	-	-	-	-	-	-	-	-	-	-	-	-
<b>Totals</b>														
Counties	20,693	40,300	-	-	1	-	60,994	32,415	54,526	9	-	209	-	87,159
Cities	-	-	-	-	-	-	-	-	-	-	-	-	-	-
<b>Grand Totals</b>	<b>20,693</b>	<b>40,300</b>	<b>-</b>	<b>-</b>	<b>1</b>	<b>-</b>	<b>60,994</b>	<b>32,415</b>	<b>54,526</b>	<b>9</b>	<b>-</b>	<b>209</b>	<b>-</b>	<b>87,159</b>

Nonrenewal Expirations (Acres)

Participating Local Jurisdictions	2004							2005						
	Land Conservation Act		Farmland Security Zone				TOTAL	Land Conservation Act		Farmland Security Zone				TOTAL
	Prime	Nonprime	Urban		Non-Urban			Prime	Nonprime	Urban		Non-Urban		
			Prime	Nonprime	Prime	Nonprime	Prime			Nonprime	Prime	Nonprime		
<b>Counties</b>														
Alameda	-	-	-	-	-	-	-	63	231	-	-	-	-	294
Amador	-	45	-	-	-	-	45	-	-	-	-	-	-	-
Butte	-	-	-	-	-	-	-	-	-	-	-	-	-	-
Calaveras	23	1,146	-	-	-	-	1,169	1	144	-	-	-	-	145
Colusa	-	-	-	-	-	-	-	-	-	-	-	-	-	-
Contra Costa	-	-	-	-	-	-	-	-	-	-	-	-	-	-
El Dorado	4	43	-	-	-	-	47	-	2	-	-	-	-	2
Fresno	238	587	-	-	-	-	825	60	45	-	-	-	-	105
Glenn	25	363	-	-	-	-	388	-	-	-	-	-	-	-
Humboldt	-	-	-	-	-	-	-	-	-	-	-	-	-	-
Imperial	-	-	-	-	-	-	-	-	-	-	-	-	-	-
Kern	-	-	-	-	-	-	-	78	2,595	-	-	-	-	2,673
Kings	75	-	-	-	-	-	75	206	-	-	-	-	-	206
Lake	30	456	-	-	-	-	486	-	-	-	-	-	-	-
Lassen	-	-	-	-	-	-	-	-	-	-	-	-	-	-
Los Angeles	-	-	-	-	-	-	-	-	-	-	-	-	-	-
Madera	240	135	-	-	-	-	375	593	1,589	-	-	-	-	2,182
Marin	-	330	-	-	-	-	330	-	-	-	-	-	-	-
Mariposa	-	69	-	-	-	-	69	-	-	-	-	-	-	-
Mendocino	2	7	-	-	-	-	8	0	38	-	-	-	-	38
Merced	-	-	-	-	-	-	-	-	-	-	-	-	-	-
Modoc	-	-	-	-	-	-	-	-	-	-	-	-	-	-
Mono	-	-	-	-	-	-	-	-	-	-	-	-	-	-
Monterey	-	-	-	-	-	-	-	-	-	-	-	-	-	-
Napa	18	-	-	-	-	-	18	-	-	-	-	-	-	-
Nevada	-	-	-	-	-	-	-	-	-	-	-	-	-	-
Orange	-	-	-	-	-	-	-	-	-	-	-	-	-	-
Placer	130	368	-	-	-	-	497	95	524	-	-	-	-	619
Plumas	-	-	-	-	-	-	-	-	-	-	-	-	-	-
Riverside	27	-	-	-	-	-	27	-	-	-	-	-	-	-
Sacramento	693	1,085	-	-	-	-	1,778	128	364	-	-	-	-	492
San Benito	-	-	-	-	-	-	-	84	164	-	-	-	-	248
San Bernardino	14	240	-	-	-	-	254	14	-	-	-	-	-	14
San Diego	-	-	-	-	-	-	-	52	-	-	-	-	-	52
San Joaquin	1,796	171	-	-	-	-	1,967	766	1,531	-	-	-	-	2,298
San Luis Obispo	46	735	-	-	-	-	781	609	2,711	-	-	-	-	3,320
San Mateo	-	-	-	-	-	-	-	-	-	-	-	-	-	-
Santa Barbara	114	30	-	-	-	-	145	108	1,056	-	-	-	-	1,164
Santa Clara	47	-	-	-	-	-	47	424	3,818	-	-	-	-	4,242
Santa Cruz	38	35	-	-	-	-	73	-	-	-	-	-	-	-
Shasta	-	-	-	-	-	-	-	-	-	-	-	-	-	-
Sierra	-	-	-	-	-	-	-	-	-	-	-	-	-	-
Siskiyou	-	-	-	-	-	-	-	493	126	-	-	-	-	619
Solano	-	45	-	-	-	-	45	107	-	-	-	-	-	107
Sonoma	11	6	-	-	-	-	17	53	602	-	-	-	-	656
Stanislaus	66	-	-	-	-	-	66	19	-	-	-	-	-	19
Sutter	-	-	-	-	-	-	-	-	-	-	-	-	-	-
Tehama	277	215	-	-	-	-	492	13	977	-	-	-	-	990
Trinity	-	-	-	-	-	-	-	-	-	-	-	-	-	-
Tulare	177	-	-	-	-	-	177	134	-	-	-	-	-	134
Tuolumne	-	165	-	-	-	-	165	-	-	-	-	-	-	-
Ventura	-	25	-	-	-	-	25	3	-	-	-	-	-	3
Yolo	489	1,116	-	-	-	-	1,605	149	2,517	-	-	-	-	2,666
<b>Cities</b>														
Camarillo	-	-	-	-	-	-	-	-	-	-	-	-	-	-
Hayward	-	-	-	-	-	-	-	-	-	-	-	-	-	-
Menlo Park	-	-	-	-	-	-	-	-	-	-	-	-	-	-
Newark	-	-	-	-	-	-	-	-	-	-	-	-	-	-
Palo Alto	-	-	-	-	-	-	-	-	-	-	-	-	-	-
Perris	-	-	-	-	-	-	-	-	-	-	-	-	-	-
Redlands	-	-	-	-	-	-	-	-	-	-	-	-	-	-
<b>Totals</b>														
Counties	4,580	7,418	-	-	-	-	11,997	4,252	19,034	-	-	-	-	23,285
Cities	-	-	-	-	-	-	-	-	-	-	-	-	-	-
<b>Grand Totals</b>	<b>4,580</b>	<b>7,418</b>	<b>-</b>	<b>-</b>	<b>-</b>	<b>-</b>	<b>11,997</b>	<b>4,252</b>	<b>19,034</b>	<b>-</b>	<b>-</b>	<b>-</b>	<b>-</b>	<b>23,285</b>



Nonrenewals Withdrawn Acreage (Land Conservation Act)

Participating Local Jurisdictions	2004			2005		
	Land Conservation Act		TOTAL	Land Conservation Act		TOTAL
	Prime	Nonprime		Prime	Nonprime	
<b>Counties</b>						
Alameda	-	-	-	-	-	-
Amador	-	-	-	-	-	-
Butte	-	-	-	-	-	-
Calaveras	-	-	-	-	-	-
Colusa	-	-	-	-	-	-
Contra Costa	-	-	-	-	-	-
El Dorado	-	-	-	-	-	-
Fresno	-	-	-	-	-	-
Glenn	-	-	-	-	-	-
Humboldt	-	-	-	-	-	-
Imperial	-	-	-	-	-	-
Kern	-	-	-	-	-	-
Kings	-	-	-	-	-	-
Lake	-	-	-	-	-	-
Lassen	-	-	-	-	398	398
Los Angeles	-	-	-	-	-	-
Madera	64	-	64	20	-	20
Marin	-	-	-	-	-	-
Mariposa	-	-	-	-	-	-
Mendocino	-	-	-	-	-	-
Merced	-	-	-	-	-	-
Modoc	-	-	-	-	-	-
Mono	-	-	-	-	-	-
Monterey	-	-	-	-	-	-
Napa	-	-	-	-	-	-
Nevada	-	-	-	-	-	-
Orange	-	-	-	-	-	-
Placer	-	-	-	13	45	58
Plumas	-	-	-	-	-	-
Riverside	-	-	-	-	-	-
Sacramento	-	-	-	-	-	-
San Benito	-	-	-	-	-	-
San Bernardino	-	-	-	-	-	-
San Diego	-	-	-	-	-	-
San Joaquin	-	-	-	-	-	-
San Luis Obispo	-	-	-	-	-	-
San Mateo	-	-	-	-	-	-
Santa Barbara	2	330	332	-	-	-
Santa Clara	-	-	-	-	-	-
Santa Cruz	-	-	-	-	-	-
Shasta	-	-	-	-	1,685	1,685
Sierra	-	-	-	-	-	-
Siskiyou	-	-	-	-	-	-
Solano	-	-	-	-	-	-
Sonoma	-	-	-	-	-	-
Stanislaus	-	-	-	-	-	-
Sutter	-	-	-	-	-	-
Tehama	-	40	40	-	-	-
Trinity	-	-	-	-	-	-
Tulare	-	-	-	-	-	-
Tuolumne	-	-	-	-	-	-
Ventura	-	-	-	-	-	-
Yolo	160	161	321	-	-	-
<b>Cities</b>						
Camarillo	-	-	-	-	-	-
Hayward	-	-	-	-	-	-
Menlo Park	-	-	-	-	-	-
Newark	-	-	-	-	-	-
Palo Alto	-	-	-	-	-	-
Perris	-	-	-	-	-	-
Redlands	-	-	-	-	-	-
<b>Totals</b>						
Counties	226	531	756	33	2,127	2,161
Cities	-	-	-	-	-	-
<b>Grand Totals</b>	<b>226</b>	<b>531</b>	<b>756</b>	<b>33</b>	<b>2,127</b>	<b>2,161</b>

Cancellations (Acres)

Participating Local Jurisdictions	2004									
	Land Conservation Act*		Farmland Security Zone*				Agricultural Conservation Easement		Other Enforceable Restriction	TOTAL
	Prime	Nonprime	Urban		Non-Urban		Prime	Nonprime		
			Prime	Nonprime	Prime	Nonprime				
<b>Counties</b>										
Alameda	-	-	-	-	-	-	-	-	-	-
Amador	-	-	-	-	-	-	-	-	-	-
Butte	-	-	-	-	-	-	-	-	-	-
Calaveras	-	-	-	-	-	-	-	-	-	-
Colusa	-	-	-	-	-	-	-	-	-	-
Contra Costa	-	-	-	-	-	-	-	-	-	-
El Dorado	-	-	-	-	-	-	-	-	-	-
Fresno	134	-	-	-	-	-	-	-	-	134
Glenn	-	-	-	-	-	-	-	-	-	-
Humboldt	-	-	-	-	-	-	-	-	-	-
Imperial	-	-	-	-	-	-	-	-	-	-
Kern	10	83	-	-	-	-	-	-	-	93
Kings	-	-	-	-	-	-	-	-	-	-
Lake	-	-	-	-	-	-	-	-	-	-
Lassen	-	-	-	-	-	-	-	-	-	-
Los Angeles	-	-	-	-	-	-	-	-	-	-
Madera	-	-	-	-	-	-	-	-	-	-
Marin	-	-	-	-	-	-	-	-	-	-
Mariposa	-	-	-	-	-	-	-	-	-	-
Mendocino	-	-	-	-	-	-	-	-	-	-
Merced	-	-	-	-	-	-	-	-	-	-
Modoc	-	-	-	-	-	-	-	-	-	-
Mono	-	-	-	-	-	-	-	-	-	-
Monterey	-	-	-	-	-	-	-	-	-	-
Napa	-	-	-	-	-	-	-	-	-	-
Nevada	-	-	-	-	-	-	-	-	-	-
Orange	-	-	-	-	-	-	-	-	-	-
Placer	-	-	-	-	-	-	-	-	-	-
Plumas	-	-	-	-	-	-	-	-	-	-
Riverside	0	-	-	-	-	-	-	-	-	0
Sacramento	-	-	-	-	-	-	-	-	-	-
San Benito	-	-	-	-	-	-	-	-	-	-
San Bernardino	-	-	-	-	-	-	-	-	-	-
San Diego	-	-	-	-	-	-	-	-	-	-
San Joaquin	2,017	3	-	-	-	-	-	-	-	2,020
San Luis Obispo	-	-	-	-	-	-	-	-	-	-
San Mateo	-	-	-	-	-	-	-	-	-	-
Santa Barbara	-	-	-	-	-	-	-	-	-	-
Santa Clara	-	-	-	-	-	-	-	-	-	-
Santa Cruz	-	-	-	-	-	-	-	-	-	-
Shasta	10	469	-	-	-	-	-	-	-	479
Sierra	-	-	-	-	-	-	-	-	-	-
Siskiyou	-	-	-	-	-	-	-	-	-	-
Solano	-	44	-	-	-	-	-	-	-	44
Sonoma	-	-	-	-	-	-	-	-	-	-
Stanislaus	-	-	-	-	-	-	-	-	-	-
Sutter	-	-	-	-	-	-	-	-	-	-
Tehama	-	-	-	-	-	-	-	-	-	-
Trinity	-	-	-	-	-	-	-	-	-	-
Tulare	-	-	-	-	-	-	-	-	-	-
Tuolumne	-	-	-	-	-	-	-	-	-	-
Ventura	-	-	-	-	-	-	-	-	-	-
Yolo	160	2	-	-	-	-	-	-	-	162
<b>Cities</b>										
Camarillo	-	-	-	-	-	-	-	-	-	-
Hayward	-	-	-	-	-	-	-	-	-	-
Menlo Park	-	-	-	-	-	-	-	-	-	-
Newark	-	-	-	-	-	-	-	-	-	-
Palo Alto	-	-	-	-	-	-	-	-	-	-
Perris	-	-	-	-	-	-	-	-	-	-
Redlands	-	-	-	-	-	-	-	-	-	-
<b>Totals</b>										
Counties	2,331	602	-	-	-	-	-	-	-	2,933
Cities	-	-	-	-	-	-	-	-	-	-
<b>Grand Totals</b>	<b>2,331</b>	<b>602</b>	<b>-</b>	<b>-</b>	<b>-</b>	<b>-</b>	<b>-</b>	<b>-</b>	<b>-</b>	<b>2,933</b>

\*Includes both continuing term and nonrenewal contracts.

Cancellations (Acres)

Participating Local Jurisdictions	2005									
	Land Conservation Act*		Farmland Security Zone*				Agricultural Conservation Easement		Other Enforceable Restriction	TOTAL
	Prime	Nonprime	Urban		Non-Urban		Prime	Nonprime		
			Prime	Nonprime	Prime	Nonprime				
<b>Counties</b>										
Alameda	-	-	-	-	-	-	-	-	-	-
Amador	-	-	-	-	-	-	-	-	-	-
Butte	-	-	-	-	-	-	-	-	-	-
Calaveras	-	-	-	-	-	-	-	-	-	-
Colusa	-	-	-	-	-	-	-	-	-	-
Contra Costa	-	-	-	-	-	-	-	-	-	-
El Dorado	-	-	-	-	-	-	-	-	-	-
Fresno	145	-	-	-	-	-	-	-	-	145
Glenn	-	-	-	-	-	-	-	-	-	-
Humboldt	-	-	-	-	-	-	-	-	-	-
Imperial	-	-	-	-	-	-	-	-	-	-
Kern	8	-	-	-	-	-	-	-	-	8
Kings	-	-	-	-	-	-	-	-	-	-
Lake	-	-	-	-	-	-	-	-	-	-
Lassen	-	-	-	-	-	-	-	-	-	-
Los Angeles	-	-	-	-	-	-	-	-	-	-
Madera	-	-	-	-	-	-	-	-	-	-
Marin	-	-	-	-	-	-	-	-	-	-
Mariposa	-	-	-	-	-	-	-	-	-	-
Mendocino	-	-	-	-	-	-	-	-	-	-
Merced	-	-	-	-	-	-	-	-	-	-
Modoc	-	-	-	-	-	-	-	-	-	-
Mono	-	-	-	-	-	-	-	-	-	-
Monterey	-	-	-	-	-	-	-	-	-	-
Napa	-	-	-	-	-	-	-	-	-	-
Nevada	-	-	-	-	-	-	-	-	-	-
Orange	-	-	-	-	-	-	-	-	-	-
Placer	-	-	-	-	-	-	-	-	-	-
Plumas	-	-	-	-	-	-	-	-	-	-
Riverside	213	-	-	-	-	-	-	-	-	213
Sacramento	-	-	-	-	-	-	-	-	-	-
San Benito	-	-	-	-	-	-	-	-	-	-
San Bernardino	-	-	-	-	-	-	-	-	-	-
San Diego	-	-	-	-	-	-	-	-	-	-
San Joaquin	123	-	-	-	-	-	-	-	-	123
San Luis Obispo	-	-	-	-	-	-	-	-	-	-
San Mateo	-	-	-	-	-	-	-	-	-	-
Santa Barbara	-	-	-	-	-	-	-	-	-	-
Santa Clara	15	-	-	-	-	-	-	-	-	15
Santa Cruz	-	-	-	-	-	-	-	-	-	-
Shasta	-	505	-	-	-	-	-	-	-	505
Sierra	-	-	-	-	-	-	-	-	-	-
Siskiyou	-	-	-	-	-	-	-	-	-	-
Solano	-	-	-	-	-	-	-	-	-	-
Sonoma	-	-	-	-	-	-	-	-	-	-
Stanislaus	10	-	-	-	-	-	-	-	-	10
Sutter	1	-	-	-	-	-	-	-	-	1
Tehama	-	-	-	-	-	-	-	-	-	-
Trinity	-	-	-	-	-	-	-	-	-	-
Tulare	-	-	-	-	-	-	-	-	-	-
Tuolumne	-	-	-	-	-	-	-	-	-	-
Ventura	-	-	-	-	-	-	-	-	-	-
Yolo	-	-	-	-	-	-	-	-	-	-
<b>Cities</b>										
Camarillo	-	-	-	-	-	-	-	-	-	-
Hayward	-	-	-	-	-	-	-	-	-	-
Menlo Park	-	-	-	-	-	-	-	-	-	-
Newark	-	-	-	-	-	-	-	-	-	-
Palo Alto	-	-	-	-	-	-	-	-	-	-
Perris	-	-	-	-	-	-	-	-	-	-
Redlands	-	-	-	-	-	-	-	-	-	-
<b>Totals</b>										
Counties	514	505	-	-	-	-	-	-	-	1,018
Cities	-	-	-	-	-	-	-	-	-	-
<b>Grand Totals</b>	<b>514</b>	<b>505</b>	<b>-</b>	<b>-</b>	<b>-</b>	<b>-</b>	<b>-</b>	<b>-</b>	<b>-</b>	<b>1,018</b>

\*Includes both continuing term and nonrenewal contracts.

Public Acquisitions (Acres)

Participating Local Jurisdictions	2004									
	Land Conservation Act*		Farmland Security Zone*				Agricultural Conservation Easement		Other Enforceable Restriction	TOTAL
	Prime	Nonprime	Urban		Non-Urban		Prime	Nonprime		
			Prime	Nonprime	Prime	Nonprime				
<b>Counties</b>										
Alameda	10	368	-	-	-	-	-	-	-	378
Amador	-	-	-	-	-	-	-	-	-	-
Butte	102	-	-	-	-	-	-	-	-	102
Calaveras	-	-	-	-	-	-	-	-	-	-
Colusa	-	-	-	-	-	-	-	-	-	-
Contra Costa	-	635	-	-	-	-	-	-	-	635
El Dorado	-	1,856	-	-	-	-	-	-	-	1,856
Fresno	10,865	1,352	-	-	-	-	-	-	-	12,217
Glenn	-	-	-	-	-	-	-	-	-	-
Humboldt	-	-	-	-	-	-	-	-	-	-
Imperial	-	-	-	-	-	-	-	-	-	-
Kern	0	90	-	-	-	-	-	-	-	91
Kings	-	-	-	-	-	-	-	-	-	-
Lake	-	-	-	-	-	-	-	-	-	-
Lassen	-	-	-	-	-	-	-	-	-	-
Los Angeles	-	-	-	-	-	-	-	-	-	-
Madera	17	483	-	-	-	-	-	-	-	500
Marin	-	-	-	-	-	-	-	-	-	-
Mariposa	-	-	-	-	-	-	-	-	-	-
Mendocino	-	-	-	-	-	-	-	-	-	-
Merced	1	780	-	-	-	-	-	-	-	781
Modoc	-	-	-	-	-	-	-	-	-	-
Mono	-	-	-	-	-	-	-	-	-	-
Monterey	-	-	-	-	-	-	-	-	-	-
Napa	-	-	-	-	-	-	-	-	-	-
Nevada	-	-	-	-	-	-	-	-	-	-
Orange	-	-	-	-	-	-	-	-	-	-
Placer	-	-	-	-	-	-	-	-	-	-
Plumas	-	-	-	-	-	-	-	-	-	-
Riverside	-	-	-	-	-	-	-	-	-	-
Sacramento	-	312	-	-	-	-	-	-	-	312
San Benito	-	228	-	-	-	-	-	-	-	228
San Bernardino	-	160	-	-	-	-	-	-	-	160
San Diego	-	34	-	-	-	-	-	-	-	34
San Joaquin	-	-	-	-	-	-	-	-	-	-
San Luis Obispo	46	854	-	-	-	-	-	-	-	900
San Mateo	-	-	-	-	-	-	-	-	-	-
Santa Barbara	-	-	-	-	-	-	-	-	-	-
Santa Clara	210	2,708	-	-	-	-	-	-	-	2,919
Santa Cruz	-	-	-	-	-	-	-	-	-	-
Shasta	-	-	-	-	-	-	-	-	-	-
Sierra	-	-	-	-	-	-	-	-	-	-
Siskiyou	-	-	-	-	-	-	-	-	-	-
Solano	-	69	-	-	-	-	-	-	-	69
Sonoma	-	-	-	-	-	-	-	-	-	-
Stanislaus	120	8	-	-	-	-	-	-	-	128
Sutter	-	-	-	-	-	-	-	-	-	-
Tehama	-	-	-	-	-	-	-	-	-	-
Trinity	-	-	-	-	-	-	-	-	-	-
Tulare	38	56	-	-	-	-	-	-	-	95
Tuolumne	-	-	-	-	-	-	-	-	-	-
Ventura	3	-	-	-	-	-	-	-	-	3
Yolo	-	-	-	-	-	-	-	-	-	-
<b>Cities</b>										
Camarillo	-	-	-	-	-	-	-	-	-	-
Hayward	-	-	-	-	-	-	-	-	-	-
Menlo Park	-	682	-	-	-	-	-	-	-	682
Newark	-	-	-	-	-	-	-	-	-	-
Palo Alto	-	-	-	-	-	-	-	-	-	-
Perris	-	-	-	-	-	-	-	-	-	-
Redlands	-	-	-	-	-	-	-	-	-	-
<b>Totals</b>										
Counties	11,414	9,994	-	-	-	-	-	-	-	21,408
Cities	-	682	-	-	-	-	-	-	-	682
<b>Grand Totals</b>	<b>11,414</b>	<b>10,676</b>	-	-	-	-	-	-	-	<b>22,090</b>

\*Includes both continuing term and nonrenewal contracts.

Public Acquisitions (Acres)

Participating Local Jurisdictions	2005									
	Land Conservation Act*		Farmland Security Zone*				Agricultural Conservation Easement		Other Enforceable Restriction	TOTAL
	Prime	Nonprime	Urban		Non-Urban		Prime	Nonprime		
			Prime	Nonprime	Prime	Nonprime				
<b>Counties</b>										
Alameda	-	-	-	-	-	-	-	-	-	-
Amador	-	-	-	-	-	-	-	-	-	-
Butte	44	-	-	-	-	-	-	-	-	44
Calaveras	-	-	-	-	-	-	-	-	-	-
Colusa	-	1,880	-	-	-	-	-	-	-	1,880
Contra Costa	-	-	-	-	-	-	-	-	-	-
El Dorado	-	-	-	-	-	-	-	-	-	-
Fresno	23,297	-	-	-	-	-	-	-	-	23,297
Glenn	-	-	-	-	-	-	-	-	-	-
Humboldt	-	-	-	-	-	-	-	-	-	-
Imperial	-	-	-	-	-	-	-	-	-	-
Kern	841	589	0	-	-	-	-	-	-	1,430
Kings	46	-	-	-	-	-	-	-	-	46
Lake	-	-	-	-	-	-	-	-	-	-
Lassen	-	-	-	-	-	-	-	-	-	-
Los Angeles	-	-	-	-	-	-	-	-	-	-
Madera	25	7	-	-	-	-	-	-	-	32
Marin	-	-	-	-	-	-	-	-	-	-
Mariposa	-	40	-	-	-	-	-	-	-	40
Mendocino	275	1,805	-	-	-	-	-	-	-	2,080
Merced	58	-	-	-	-	-	-	-	-	58
Modoc	-	-	-	-	-	-	-	-	-	-
Mono	-	-	-	-	-	-	-	-	-	-
Monterey	-	-	-	-	-	-	-	-	-	-
Napa	-	-	-	-	-	-	-	-	-	-
Nevada	-	-	-	-	-	-	-	-	-	-
Orange	-	-	-	-	-	-	-	-	-	-
Placer	-	-	-	-	-	-	-	-	-	-
Plumas	-	-	-	-	-	-	-	-	-	-
Riverside	351	-	-	-	-	-	-	-	-	351
Sacramento	-	203	-	-	-	-	-	-	-	203
San Benito	-	-	-	-	-	-	-	-	-	-
San Bernardino	-	-	-	-	-	-	-	-	-	-
San Diego	32	9,973	-	-	-	-	-	-	-	10,005
San Joaquin	-	-	-	-	-	-	-	-	-	-
San Luis Obispo	-	15,675	-	-	-	-	-	-	-	15,675
San Mateo	-	-	-	-	-	-	-	-	-	-
Santa Barbara	-	-	-	-	-	-	-	-	-	-
Santa Clara	412	11,014	-	-	-	-	-	-	-	11,426
Santa Cruz	-	-	-	-	-	-	-	-	-	-
Shasta	-	-	-	-	-	-	-	-	-	-
Sierra	-	-	-	-	-	-	-	-	-	-
Siskiyou	-	-	-	-	-	-	-	-	-	-
Solano	542	257	-	-	-	-	-	-	-	799
Sonoma	-	-	-	-	-	-	-	-	-	-
Stanislaus	40	-	-	-	-	-	-	-	-	40
Sutter	-	-	-	-	-	-	-	-	-	-
Tehama	-	2,400	-	-	-	-	-	-	-	2,400
Trinity	-	-	-	-	-	-	-	-	-	-
Tulare	330	160	-	-	-	-	-	-	-	490
Tuolumne	-	-	-	-	-	-	-	-	-	-
Ventura	15	23	-	-	-	-	-	-	-	38
Yolo	-	-	-	-	-	-	-	-	-	-
<b>Cities</b>										
Camarillo	-	-	-	-	-	-	-	-	-	-
Hayward	-	-	-	-	-	-	-	-	-	-
Menlo Park	-	-	-	-	-	-	-	-	-	-
Newark	-	-	-	-	-	-	-	-	-	-
Palo Alto	-	-	-	-	-	-	-	-	-	-
Perris	-	-	-	-	-	-	-	-	-	-
Redlands	-	-	-	-	-	-	-	-	-	-
<b>Totals</b>										
Counties	26,308	44,026	0	-	-	-	-	-	-	70,334
Cities	-	-	-	-	-	-	-	-	-	-
<b>Grand Totals</b>	<b>26,308</b>	<b>44,026</b>	<b>0</b>	<b>-</b>	<b>-</b>	<b>-</b>	<b>-</b>	<b>-</b>	<b>-</b>	<b>70,334</b>

\*Includes both continuing term and nonrenewal contracts.

City Annexations (Acres)

Participating Local Jurisdictions	2004									
	Land Conservation Act*		Farmland Security Zone*				Agricultural Conservation Easement		Other Enforceable Restriction	TOTAL
	Prime	Nonprime	Urban		Non-Urban		Prime	Nonprime		
			Prime	Nonprime	Prime	Nonprime				
<b>Counties</b>										
Alameda	-	-	-	-	-	-	-	-	-	-
Amador	-	-	-	-	-	-	-	-	-	-
Butte	-	-	-	-	-	-	-	-	-	-
Calaveras	-	-	-	-	-	-	-	-	-	-
Colusa	-	-	-	-	-	-	-	-	-	-
Contra Costa	-	-	-	-	-	-	-	-	-	-
El Dorado	-	-	-	-	-	-	-	-	-	-
Fresno	-	-	-	-	-	-	-	-	-	-
Glenn	-	-	-	-	-	-	-	-	-	-
Humboldt	-	-	-	-	-	-	-	-	-	-
Imperial	-	-	-	-	-	-	-	-	-	-
Kern	23	-	-	-	-	-	-	-	-	23
Kings	-	-	-	-	-	-	-	-	-	-
Lake	-	-	-	-	-	-	-	-	-	-
Lassen	-	-	-	-	-	-	-	-	-	-
Los Angeles	-	-	-	-	-	-	-	-	-	-
Madera	-	-	-	-	-	-	-	-	-	-
Marin	-	-	-	-	-	-	-	-	-	-
Mariposa	-	-	-	-	-	-	-	-	-	-
Mendocino	-	-	-	-	-	-	-	-	-	-
Merced	-	-	-	-	-	-	-	-	-	-
Modoc	-	-	-	-	-	-	-	-	-	-
Mono	-	-	-	-	-	-	-	-	-	-
Monterey	-	-	-	-	-	-	-	-	-	-
Napa	-	-	-	-	-	-	-	-	-	-
Nevada	-	-	-	-	-	-	-	-	-	-
Orange	-	-	-	-	-	-	-	-	-	-
Placer	-	-	-	-	-	-	-	-	-	-
Plumas	-	-	-	-	-	-	-	-	-	-
Riverside	38	-	-	-	-	-	-	-	-	38
Sacramento	-	-	-	-	-	-	-	-	-	-
San Benito	-	-	-	-	-	-	-	-	-	-
San Bernardino	919	600	-	-	-	-	-	-	-	1,518
San Diego	-	-	-	-	-	-	-	-	-	-
San Joaquin	302	-	-	-	-	-	-	-	-	302
San Luis Obispo	-	-	-	-	-	-	-	-	-	-
San Mateo	-	-	-	-	-	-	-	-	-	-
Santa Barbara	-	-	-	-	-	-	-	-	-	-
Santa Clara	-	-	-	-	-	-	-	-	-	-
Santa Cruz	-	-	-	-	-	-	-	-	-	-
Shasta	-	-	-	-	-	-	-	-	-	-
Sierra	-	-	-	-	-	-	-	-	-	-
Siskiyou	-	-	-	-	-	-	-	-	-	-
Solano	-	2	-	-	-	-	-	-	-	2
Sonoma	-	-	-	-	-	-	-	-	-	-
Stanislaus	17	-	-	-	-	-	-	-	-	17
Sutter	-	-	-	-	-	-	-	-	-	-
Tehama	-	-	-	-	-	-	-	-	-	-
Trinity	-	-	-	-	-	-	-	-	-	-
Tulare	31	-	-	-	-	-	-	-	-	31
Tuolumne	-	-	-	-	-	-	-	-	-	-
Ventura	-	-	-	-	-	-	-	-	-	-
Yolo	-	-	-	-	-	-	-	-	-	-
<b>Cities</b>										
Camarillo	-	-	-	-	-	-	-	-	-	-
Hayward	-	-	-	-	-	-	-	-	-	-
Menlo Park	-	-	-	-	-	-	-	-	-	-
Newark	-	-	-	-	-	-	-	-	-	-
Palo Alto	-	-	-	-	-	-	-	-	-	-
Perris	-	-	-	-	-	-	-	-	-	-
Redlands	-	-	-	-	-	-	-	-	-	-
<b>Totals</b>										
Counties	1,329	601	-	-	-	-	-	-	-	1,931
Cities	-	-	-	-	-	-	-	-	-	-
<b>Grand Totals</b>	<b>1,329</b>	<b>601</b>	<b>-</b>	<b>-</b>	<b>-</b>	<b>-</b>	<b>-</b>	<b>-</b>	<b>-</b>	<b>1,931</b>

\*Includes both continuing term and nonrenewal contracts.



City Annexations (Acres)

Participating Local Jurisdictions	2005									
	Land Conservation Act*		Farmland Security Zone*				Agricultural Conservation Easement		Other Enforceable Restriction	TOTAL
	Prime	Nonprime	Urban		Non-Urban		Prime	Nonprime		
			Prime	Nonprime	Prime	Nonprime				
<b>Counties</b>										
Alameda	-	-	-	-	-	-	-	-	-	-
Amador	-	-	-	-	-	-	-	-	-	-
Butte	-	-	-	-	-	-	-	-	-	-
Calaveras	-	-	-	-	-	-	-	-	-	-
Colusa	-	-	-	-	-	-	-	-	-	-
Contra Costa	-	-	-	-	-	-	-	-	-	-
El Dorado	-	-	-	-	-	-	-	-	-	-
Fresno	-	-	-	-	-	-	-	-	-	-
Glenn	-	-	-	-	-	-	-	-	-	-
Humboldt	-	-	-	-	-	-	-	-	-	-
Imperial	-	-	-	-	-	-	-	-	-	-
Kern	325	-	-	-	-	-	-	-	-	325
Kings	40	-	-	-	-	-	-	-	-	40
Lake	-	-	-	-	-	-	-	-	-	-
Lassen	-	-	-	-	-	-	-	-	-	-
Los Angeles	-	-	-	-	-	-	-	-	-	-
Madera	-	-	-	-	-	-	-	-	-	-
Marin	-	-	-	-	-	-	-	-	-	-
Mariposa	-	-	-	-	-	-	-	-	-	-
Mendocino	-	-	-	-	-	-	-	-	-	-
Merced	-	-	-	-	-	-	-	-	-	-
Modoc	-	-	-	-	-	-	-	-	-	-
Mono	-	-	-	-	-	-	-	-	-	-
Monterey	-	-	-	-	-	-	-	-	-	-
Napa	-	-	-	-	-	-	-	-	-	-
Nevada	-	-	-	-	-	-	-	-	-	-
Orange	-	-	-	-	-	-	-	-	-	-
Placer	-	327	-	-	-	-	-	-	-	327
Plumas	-	-	-	-	-	-	-	-	-	-
Riverside	-	-	-	-	-	-	-	-	-	-
Sacramento	-	-	-	-	-	-	-	-	-	-
San Benito	-	-	-	-	-	-	-	-	-	-
San Bernardino	-	-	-	-	-	-	-	-	-	-
San Diego	-	-	-	-	-	-	-	-	-	-
San Joaquin	17	-	-	-	-	-	-	-	-	17
San Luis Obispo	-	-	-	-	-	-	-	-	-	-
San Mateo	-	-	-	-	-	-	-	-	-	-
Santa Barbara	-	-	-	-	-	-	-	-	-	-
Santa Clara	-	-	-	-	-	-	-	-	-	-
Santa Cruz	-	-	-	-	-	-	-	-	-	-
Shasta	-	-	-	-	-	-	-	-	-	-
Sierra	-	-	-	-	-	-	-	-	-	-
Siskiyou	-	-	-	-	-	-	-	-	-	-
Siskiyou	-	-	-	-	-	-	-	-	-	-
Solano	-	1	-	-	-	-	-	-	-	1
Sonoma	-	-	-	-	-	-	-	-	-	-
Stanislaus	4	-	-	-	-	-	-	-	-	4
Sutter	-	-	-	-	-	-	-	-	-	-
Tehama	-	-	-	-	-	-	-	-	-	-
Trinity	-	-	-	-	-	-	-	-	-	-
Tulare	244	-	-	-	-	-	-	-	-	244
Tuolumne	-	-	-	-	-	-	-	-	-	-
Ventura	-	-	-	-	-	-	-	-	-	-
Yolo	-	-	-	-	-	-	-	-	-	-
<b>Cities</b>										
Camarillo	-	-	-	-	-	-	-	-	-	-
Hayward	-	-	-	-	-	-	-	-	-	-
Menlo Park	-	-	-	-	-	-	-	-	-	-
Newark	-	-	-	-	-	-	-	-	-	-
Palo Alto	-	-	-	-	-	-	-	-	-	-
Perris	-	-	-	-	-	-	-	-	-	-
Redlands	-	-	-	-	-	-	-	-	-	-
<b>Totals</b>										
Counties	630	328	-	-	-	-	-	-	-	958
Cities	-	-	-	-	-	-	-	-	-	-
<b>Grand Totals</b>	<b>630</b>	<b>328</b>	<b>-</b>	<b>-</b>	<b>-</b>	<b>-</b>	<b>-</b>	<b>-</b>	<b>-</b>	<b>958</b>

\*Includes both continuing term and nonrenewal contracts.

Williamson Act Easement Exchanges (Acres)

Participating Local Jurisdictions	2004				2005			
	Land Conservation Act*		Other Enforceable Restriction	TOTAL	Land Conservation Act*		Other Enforceable Restriction	TOTAL
	Prime	Nonprime			Prime	Nonprime		
<b>Counties</b>								
Alameda	-	-	-	-	-	-	-	-
Amador	-	-	-	-	-	-	-	-
Butte	-	-	-	-	-	-	-	-
Calaveras	-	-	-	-	-	-	-	-
Colusa	-	-	-	-	-	-	-	-
Contra Costa	-	-	-	-	-	-	-	-
El Dorado	-	-	-	-	-	-	-	-
Fresno	-	-	-	-	-	-	-	-
Glenn	-	-	-	-	-	-	-	-
Humboldt	-	-	-	-	-	-	-	-
Imperial	-	-	-	-	-	-	-	-
Kern	-	-	-	-	-	-	-	-
Kings	-	-	-	-	-	-	-	-
Lake	-	-	-	-	-	-	-	-
Lassen	-	-	-	-	-	-	-	-
Los Angeles	-	-	-	-	-	-	-	-
Madera	-	-	-	-	-	-	-	-
Marin	-	-	-	-	-	-	-	-
Mariposa	-	-	-	-	-	-	-	-
Mendocino	-	-	-	-	-	-	-	-
Merced	-	-	-	-	-	-	-	-
Modoc	-	-	-	-	-	-	-	-
Mono	-	-	-	-	-	-	-	-
Monterey	-	-	-	-	-	-	-	-
Napa	-	-	-	-	-	-	-	-
Nevada	-	-	-	-	-	-	-	-
Orange	-	-	-	-	-	-	-	-
Placer	-	-	-	-	-	-	-	-
Plumas	-	-	-	-	-	-	-	-
Riverside	-	-	-	-	-	-	-	-
Sacramento	-	-	-	-	-	-	-	-
San Benito	-	-	-	-	-	-	-	-
San Bernardino	-	-	-	-	-	-	-	-
San Diego	-	-	-	-	-	-	-	-
San Joaquin	-	-	-	-	-	-	-	-
San Luis Obispo	-	-	-	-	-	-	-	-
San Mateo	-	-	-	-	-	-	-	-
Santa Barbara	-	-	-	-	-	-	-	-
Santa Clara	-	-	-	-	-	-	-	-
Santa Cruz	-	-	-	-	-	-	-	-
Shasta	-	-	-	-	-	-	-	-
Sierra	-	-	-	-	-	-	-	-
Siskiyou	-	-	-	-	-	-	-	-
Solano	-	-	-	-	-	-	-	-
Sonoma	-	-	-	-	-	-	-	-
Stanislaus	-	-	-	-	-	-	-	-
Sutter	-	-	-	-	-	-	-	-
Tehama	-	-	-	-	-	-	-	-
Trinity	-	-	-	-	-	-	-	-
Tulare	-	-	-	-	-	-	-	-
Tuolumne	-	-	-	-	-	-	-	-
Ventura	-	-	-	-	-	-	-	-
Yolo	-	-	-	-	-	-	-	-
<b>Cities</b>								
Camarillo	-	-	-	-	-	-	-	-
Hayward	-	-	-	-	-	-	-	-
Menlo Park	-	-	-	-	-	-	-	-
Newark	-	-	-	-	-	-	-	-
Palo Alto	-	-	-	-	-	-	-	-
Perris	-	-	-	-	-	-	-	-
Redlands	-	-	-	-	-	-	-	-
<b>Totals</b>								
Counties	-	-	-	-	-	-	-	-
Cities	-	-	-	-	-	-	-	-
<b>Grand Totals</b>	-	-	-	-	-	-	-	-

\*Includes both continuing term and nonrenewal contracts.

Net Adjustments (Acres)

Participating Local Jurisdictions	2004									
	Land Conservation Act*		Farmland Security Zone*				Agricultural Conservation Easement		Other Enforceable Restriction	TOTAL
	Prime	Nonprime	Urban		Non-Urban		Prime	Nonprime		
			Prime	Nonprime	Prime	Nonprime				
<b>Counties</b>										
Alameda	(4,293)	4,246	-	-	-	-	-	-	-	(46)
Amador	(228)	(2,764)	-	-	-	-	-	-	-	(2,991)
Butte	(4,308)	3,914	-	-	-	-	-	-	-	(395)
Calaveras	(196)	119	-	-	-	-	-	-	-	(76)
Colusa	-	-	-	-	-	-	-	-	-	-
Contra Costa	(2)	(8)	-	-	-	-	-	-	-	(10)
El Dorado	11	36	-	-	-	-	-	-	-	46
Fresno	(2,599)	1,789	-	-	42	-	-	-	-	(768)
Glenn	(198)	198	-	-	513	(513)	-	-	-	1
Humboldt	(343)	3,546	-	-	-	-	-	-	-	3,204
Imperial	-	-	-	-	-	-	-	-	-	-
Kern	(27,412)	27,335	-	-	1	-	-	-	-	(76)
Kings	(3)	-	-	-	-	-	-	-	-	(3)
Lake	-	218	-	-	-	-	-	-	-	218
Lassen	(1,315)	816	111	(110)	(340)	325	-	-	-	(514)
Los Angeles	-	-	-	-	-	-	-	-	-	-
Madera	735	(55)	(2)	-	(0)	-	-	-	-	677
Marin	-	-	-	-	-	-	-	-	-	-
Mariposa	-	(30)	-	-	-	-	-	-	-	(30)
Mendocino	478	(324)	-	-	-	-	-	-	-	154
Merced	(549)	498	-	-	-	-	-	-	-	(51)
Modoc	(9)	9	-	-	-	-	-	-	-	0
Mono	(8)	-	-	-	-	-	-	-	-	(8)
Monterey	-	-	-	-	-	-	-	-	-	-
Napa	79	(29)	-	-	-	-	-	-	-	50
Nevada	-	-	-	-	-	-	-	-	-	-
Orange	(11)	12	-	-	-	-	-	-	-	1
Placer	(594)	595	-	-	-	-	-	-	-	1
Plumas	-	-	-	-	-	-	-	-	-	-
Riverside	(10)	(6)	-	-	-	-	-	-	-	(16)
Sacramento	-	-	-	-	-	-	-	-	-	-
San Benito	447	(457)	-	-	-	-	-	-	-	(10)
San Bernardino	1,662	(1,661)	-	-	-	-	-	-	-	2
San Diego	-	-	-	-	-	-	-	-	-	-
San Joaquin	88	(135)	(3)	(1)	-	(1)	-	-	-	(52)
San Luis Obispo	414	(1,152)	-	-	-	-	-	-	-	(737)
San Mateo	-	-	-	-	-	-	-	-	-	-
Santa Barbara	2,620	(3,340)	-	-	-	-	-	-	-	(720)
Santa Clara	-	-	-	-	-	-	-	-	-	-
Santa Cruz	-	-	-	-	-	-	-	-	-	-
Shasta	15	-	-	-	-	-	-	-	-	15
Sierra	-	(18)	-	(26)	-	-	-	-	-	(44)
Siskiyou	45	(45)	-	-	-	-	-	-	-	-
Solano	2,855	(2,857)	-	-	-	-	-	-	-	(3)
Sonoma	10,509	(27,004)	-	-	-	-	-	-	-	(16,496)
Stanislaus	84	146	-	-	-	-	-	-	-	231
Sutter	-	-	-	-	-	-	-	-	-	-
Tehama	(360)	275	-	-	-	-	-	-	-	(85)
Trinity	-	-	-	-	-	-	-	-	-	-
Tulare	-	-	-	-	-	-	-	-	-	-
Tuolumne	-	(7)	-	-	-	-	-	-	-	(7)
Ventura	30	(31)	18	(3)	31	(4)	-	-	-	41
Yolo	(22)	29	-	-	-	-	-	-	-	7
<b>Cities</b>										
Camarillo	-	-	-	-	-	-	-	-	-	-
Hayward	-	-	-	-	-	-	-	-	-	-
Menlo Park	-	(3)	-	-	-	-	-	-	-	(3)
Newark	-	-	-	-	-	-	-	-	-	-
Palo Alto	-	-	-	-	-	-	-	-	-	-
Perris	-	-	-	-	-	-	-	-	-	-
Redlands	-	-	-	-	-	-	-	-	-	-
<b>Totals</b>										
Counties	(22,383)	3,858	123	(140)	247	(194)	0	0	0	(18,489)
Cities	0	(3)	0	0	0	0	0	0	0	(3)
<b>Grand Totals</b>	<b>(22,383)</b>	<b>3,855</b>	<b>123</b>	<b>(140)</b>	<b>247</b>	<b>(194)</b>	<b>0</b>	<b>0</b>	<b>0</b>	<b>(18,493)</b>

\*Includes both continuing term and nonrenewal contracts.

Net Adjustments (Acres)

Participating Local Jurisdictions	2005									
	Land Conservation Act*		Farmland Security Zone*				Agricultural Conservation Easement		Other Enforceable Restriction	TOTAL
	Prime	Nonprime	Urban		Non-Urban		Prime	Nonprime		
			Prime	Nonprime	Prime	Nonprime				
<b>Counties</b>										
Alameda	(3,402)	4,396	-	-	-	-	-	-	-	993
Amador	33	(516)	-	-	-	-	-	-	-	(483)
Butte	(295)	477	-	-	-	-	-	-	-	182
Calaveras	(125)	(19)	-	-	-	-	-	-	-	(144)
Colusa	(126)	(105)	197	-	-	-	-	-	-	(35)
Contra Costa	(1)	9	-	-	-	-	-	-	-	8
El Dorado	(34)	36	-	-	-	-	-	-	-	2
Fresno	(1,351)	(123)	-	-	(151)	-	-	-	-	(1,625)
Glenn	1	-	-	-	-	-	-	-	-	1
Humboldt	47	(30)	-	-	-	-	-	-	-	18
Imperial	-	-	-	-	-	-	-	-	-	-
Kern	(529)	536	1	-	3	-	-	-	-	11
Kings	-	-	-	-	-	-	-	-	-	-
Lake	-	-	-	-	-	-	-	-	-	-
Lassen	33	140	-	-	(10)	10	-	-	-	174
Los Angeles	-	-	-	-	-	-	-	-	-	-
Madera	(627)	615	20	(20)	-	-	-	-	-	(11)
Marin	-	-	-	-	-	-	-	-	-	-
Mariposa	-	(118)	-	-	-	-	-	-	-	(118)
Mendocino	(100)	893	-	-	-	-	-	-	-	792
Merced	882	(947)	-	-	-	-	-	-	-	(65)
Modoc	(45)	598	-	-	-	-	-	-	-	553
Mono	-	-	-	-	-	-	-	-	-	-
Monterey	1,441	(13,322)	4,990	996	(5,322)	(1,410)	-	-	2,160	(10,468)
Napa	70	99	-	-	-	-	-	-	-	169
Nevada	(1,953)	0	-	-	-	-	-	-	1,953	0
Orange	(293)	(2,905)	-	-	-	-	-	-	-	(3,197)
Placer	(85)	295	-	-	(720)	1,016	-	-	-	507
Plumas	-	-	-	-	-	-	-	-	-	-
Riverside	(156)	61	-	-	-	-	-	-	-	(95)
Sacramento	1,489	(1,483)	-	-	-	-	-	-	-	6
San Benito	(3)	11	-	-	-	-	-	-	-	8
San Bernardino	-	-	-	-	-	-	-	-	-	-
San Diego	-	-	-	-	-	-	-	-	-	-
San Joaquin	506	(549)	(1)	-	55	(55)	-	-	-	(43)
San Luis Obispo	689	(912)	-	18	-	-	-	-	-	(206)
San Mateo	-	-	-	-	-	-	-	-	-	-
Santa Barbara	1,966	(1,238)	-	-	-	-	-	-	-	729
Santa Clara	-	-	-	-	-	-	-	-	-	-
Santa Cruz	38	(5)	-	-	-	-	-	-	-	33
Shasta	15	-	-	-	-	-	-	-	-	15
Sierra	-	3	-	-	-	-	-	-	-	3
Siskiyou	26	(0)	-	-	-	-	-	-	-	26
Solano	(1,364)	1,251	-	-	-	-	-	-	-	(113)
Sonoma	(136)	(1,207)	-	-	-	-	-	-	(18,215)	(19,558)
Stanislaus	(26)	(438)	-	-	-	-	-	-	-	(464)
Sutter	-	-	-	-	-	-	-	-	-	-
Tehama	132	(142)	-	-	-	-	-	-	-	(10)
Trinity	-	-	-	-	-	-	-	-	-	-
Tulare	-	-	-	-	-	-	-	-	-	-
Tuolumne	-	8	-	-	-	-	-	-	-	8
Ventura	12	1	13	(13)	-	-	-	-	-	13
Yolo	913	(734)	-	-	-	-	-	-	-	179
<b>Cities</b>										
Camarillo	-	-	-	-	-	-	-	-	-	-
Hayward	-	-	-	-	-	-	-	-	-	-
Menlo Park	-	-	-	-	-	-	-	-	-	-
Newark	-	-	-	-	-	-	-	-	-	-
Palo Alto	-	-	-	-	-	-	-	-	-	-
Perris	-	-	-	-	-	-	-	-	-	-
Redlands	-	-	-	-	-	-	-	-	-	-
<b>Totals</b>										
Counties	(2,358)	(15,362)	5,220	980	(6,144)	(439)	0	0	(14,102)	(32,205)
Cities	0	0	0	0	0	0	0	0	0	0
<b>Grand Totals</b>	<b>(2,358)</b>	<b>(15,362)</b>	<b>5,220</b>	<b>980</b>	<b>(6,144)</b>	<b>(439)</b>	<b>0</b>	<b>0</b>	<b>(14,102)</b>	<b>(32,205)</b>

\*Includes both continuing term and nonrenewal contracts.

Contracted Land not Receiving Tax Relief Benefits (Acres)\*

Participating Local Jurisdictions	2004									
	Land Conservation Act		Farmland Security Zone				Agricultural Conservation Easement		Other Enforceable Restriction	TOTAL
	Prime	Nonprime	Urban		Non-Urban		Prime	Nonprime		
			Prime	Nonprime	Prime	Nonprime				
<b>Counties</b>										
Alameda	-	12,506	-	-	-	-	-	-	-	12,506
Amador	94	557	-	-	-	-	-	-	-	652
Butte	-	-	-	-	-	-	-	-	-	-
Calaveras	-	-	-	-	-	-	-	-	-	-
Colusa	-	-	-	-	-	-	-	-	-	-
Contra Costa	2,413	1,819	-	-	-	-	-	-	-	4,232
El Dorado	-	-	-	-	-	-	-	-	-	-
Fresno	16,584	610	-	-	-	-	-	-	-	17,193
Glenn	-	-	-	-	-	-	-	-	-	-
Humboldt	-	-	-	-	-	-	-	-	-	-
Imperial	-	-	-	-	-	-	-	-	-	-
Kern	-	-	-	-	-	-	-	-	-	-
Kings	23,395	2,815	-	-	-	-	-	-	-	26,210
Lake	522	49	-	-	-	-	-	-	-	571
Lassen	-	-	-	-	-	-	-	-	-	-
Los Angeles	-	-	-	-	-	-	-	-	-	-
Madera	23,423	3,313	-	-	-	-	-	-	-	26,736
Marin	-	-	-	-	-	-	-	-	-	-
Mariposa	-	-	-	-	-	-	-	-	-	-
Mendocino	-	-	-	-	-	-	-	-	-	-
Merced	-	-	-	-	-	-	-	-	-	-
Modoc	-	-	-	-	-	-	-	-	-	-
Mono	-	-	-	-	-	-	-	-	-	-
Monterey	38,743	6,271	-	-	-	-	-	-	-	45,014
Napa	9,310	6,765	-	-	-	-	-	-	-	16,074
Nevada	-	-	-	-	-	-	-	-	-	-
Orange	-	-	-	-	-	-	-	-	-	-
Placer	902	209	-	-	-	-	-	-	-	1,110
Plumas	-	-	-	-	-	-	-	-	-	-
Riverside	7,383	57	-	-	-	-	-	-	-	7,440
Sacramento	-	-	-	-	-	-	-	-	-	-
San Benito	3,481	234	-	-	-	-	-	-	-	3,715
San Bernardino	-	-	-	-	-	-	-	-	-	-
San Diego	-	-	-	-	-	-	-	-	-	-
San Joaquin	3,175	10,784	-	-	-	-	-	-	-	13,960
San Luis Obispo	2,708	2,346	-	-	-	-	-	-	-	5,054
San Mateo	-	-	-	-	-	-	-	-	-	-
Santa Barbara	27,601	7,771	-	-	-	-	-	-	-	35,373
Santa Clara	-	-	-	-	-	-	-	-	-	-
Santa Cruz	624	1,224	-	-	-	-	-	-	-	1,848
Shasta	-	-	-	-	-	-	-	-	-	-
Sierra	51	635	-	-	-	-	-	-	-	686
Siskiyou	-	523	-	-	-	-	-	-	-	523
Solano	1,465	8,779	-	-	-	-	-	-	-	10,244
Sonoma	-	-	-	-	-	-	-	-	-	-
Stanislaus	24,815	6,404	-	-	-	-	-	-	-	31,220
Sutter	-	-	-	-	-	-	-	-	-	-
Tehama	5,947	2,170	-	-	-	-	-	-	-	8,117
Trinity	-	-	-	-	-	-	-	-	-	-
Tulare	177	23	-	-	-	-	-	-	-	200
Tuolumne	-	-	-	-	-	-	-	-	-	-
Ventura	-	-	-	-	-	-	-	-	-	-
Yolo	6,772	2,176	-	-	-	-	-	-	-	8,948
<b>Cities</b>										
Camarillo	-	-	-	-	-	-	-	-	-	-
Hayward	-	-	-	-	-	-	-	-	-	-
Menlo Park	-	-	-	-	-	-	-	-	-	-
Newark	-	-	-	-	-	-	-	-	-	-
Palo Alto	-	-	-	-	-	-	-	-	-	-
Perris	-	-	-	-	-	-	-	-	-	-
Redlands	-	-	-	-	-	-	-	-	-	-
<b>Totals</b>										
Counties	199,586	78,039	-	-	-	-	-	-	-	277,625
Cities	-	-	-	-	-	-	-	-	-	-
<b>Grand Totals</b>	199,586	78,039	-	-	-	-	-	-	-	277,625

\*Land assessed at a lower value for property taxes under Revenue and Taxation Code Section 110.1 (Proposition 13 provisions) than under Revenue and Taxation Code Sections 423, 423.3, or 423.5 (Williamson Act valuation provisions).

Contracted Land not Receiving Tax Relief Benefits (Acres)\*

Participating Local Jurisdictions	2005									
	Land Conservation Act		Farmland Security Zone				Agricultural Conservation Easement		Other Enforceable Restriction	TOTAL
	Prime	Nonprime	Urban		Non-Urban		Prime	Nonprime		
			Prime	Nonprime	Prime	Nonprime				
<b>Counties</b>										
Alameda	15	15,331	-	-	-	-	-	-	-	15,346
Amador	296	-	-	-	-	-	-	-	-	296
Butte	-	-	-	-	-	-	-	-	-	-
Calaveras	-	-	-	-	-	-	-	-	-	-
Colusa	-	-	-	-	-	-	-	-	-	-
Contra Costa	2,357	1,819	-	-	-	-	-	-	-	4,176
El Dorado	50	16	-	-	-	-	-	-	-	66
Fresno	1,429	100	-	-	-	-	-	-	-	1,529
Glenn	-	-	-	-	-	-	-	-	-	-
Humboldt	-	-	-	-	-	-	-	-	-	-
Imperial	-	-	-	-	-	-	-	-	-	-
Kern	-	-	-	-	-	-	-	-	-	-
Kings	62,422	5,004	-	-	-	-	-	-	-	67,426
Lake	499	171	-	-	-	-	-	-	-	670
Lassen	-	-	-	-	-	-	-	-	-	-
Los Angeles	-	-	-	-	-	-	-	-	-	-
Madera	45,947	2,857	-	-	-	-	-	-	-	48,804
Marin	-	-	-	-	-	-	-	-	-	-
Mariposa	-	-	-	-	-	-	-	-	-	-
Mendocino	-	-	-	-	-	-	-	-	-	-
Merced	-	-	-	-	-	-	-	-	-	-
Modoc	-	-	-	-	-	-	-	-	-	-
Mono	-	-	-	-	-	-	-	-	-	-
Monterey	31,879	7,932	-	-	-	-	-	-	275	40,087
Napa	8,207	6,909	-	-	-	-	-	-	-	15,115
Nevada	232	-	-	-	-	-	-	-	106	338
Orange	-	-	-	-	-	-	-	-	-	-
Placer	2,721	381	-	-	-	-	-	-	-	3,102
Plumas	-	-	-	-	-	-	-	-	-	-
Riverside	7,531	57	-	-	-	-	-	-	-	7,588
Sacramento	-	-	-	-	-	-	-	-	-	-
San Benito	3,625	232	-	-	-	-	-	-	-	3,857
San Bernardino	-	-	-	-	-	-	-	-	-	-
San Diego	-	-	-	-	-	-	-	-	-	-
San Joaquin	3,115	10,560	-	-	-	-	-	-	-	13,675
San Luis Obispo	2,780	4,279	-	-	-	-	-	-	-	7,060
San Mateo	-	-	-	-	-	-	-	-	-	-
Santa Barbara	26,865	9,129	-	-	-	-	-	-	-	35,994
Santa Clara	-	-	-	-	-	-	-	-	-	-
Santa Cruz	624	1,461	-	-	-	-	-	-	-	2,085
Shasta	-	-	-	-	-	-	-	-	-	-
Sierra	30	480	-	-	-	-	-	-	-	510
Siskiyou	-	527	-	-	-	-	-	-	-	527
Solano	1,835	11,392	-	-	-	-	-	-	-	13,228
Sonoma	-	-	-	-	-	-	-	-	-	-
Stanislaus	28,942	7,305	-	-	-	-	-	-	-	36,247
Sutter	-	-	-	-	-	-	-	-	-	-
Tehama	8,951	6,503	-	-	-	-	-	-	-	15,454
Trinity	-	-	-	-	-	-	-	-	-	-
Tulare	177	23	-	-	-	-	-	-	-	200
Tuolumne	-	-	-	-	-	-	-	-	-	-
Ventura	-	-	-	-	-	-	-	-	-	-
Yolo	7,734	2,447	-	-	-	-	-	-	-	10,181
<b>Cities</b>										
Camarillo	-	-	-	-	-	-	-	-	-	-
Hayward	-	-	-	-	-	-	-	-	-	-
Menlo Park	-	-	-	-	-	-	-	-	-	-
Newark	-	-	-	-	-	-	-	-	-	-
Palo Alto	-	-	-	-	-	-	-	-	-	-
Perris	-	-	-	-	-	-	-	-	-	-
Redlands	-	-	-	-	-	-	-	-	-	-
<b>Totals</b>										
Counties	248,264	94,915	-	-	-	-	-	-	381	343,561
Cities	-	-	-	-	-	-	-	-	-	-
<b>Grand Totals</b>	<b>248,264</b>	<b>94,915</b>	<b>-</b>	<b>-</b>	<b>-</b>	<b>-</b>	<b>-</b>	<b>-</b>	<b>381</b>	<b>343,561</b>

\*Land assessed at a lower value for property taxes under Revenue and Taxation Code Section 110.1 (Proposition 13 provisions) than under Revenue and Taxation Code Sections 423, 423.3, or 423.5 (Williamson Act valuation provisions).

Acres Eligible for Open Space Subvention Payment

Participating Local Jurisdictions	2004									
	Land Conservation Act		Farmland Security Zone				Agricultural Conservation Easement		Other Enforceable Restriction	TOTAL
	Prime	Nonprime	Urban		Non-Urban		Prime	Nonprime		
			Prime	Nonprime	Prime	Nonprime				
<b>Counties</b>										
Alameda	4,837	116,061	-	-	-	-	-	-	-	120,898
Amador	5,100	84,868	-	-	-	-	-	-	-	89,968
Butte	108,937	105,806	-	-	-	-	-	-	-	214,743
Calaveras	16,810	115,453	-	-	-	-	-	-	-	132,263
Colusa	64,382	195,422	15,685	699	39,227	2,342	-	-	-	317,757
Contra Costa	7,010	35,215	-	-	-	-	-	-	-	42,225
El Dorado	2,131	31,136	-	-	5	180	-	-	-	33,452
Fresno	1,016,318	485,695	-	-	19,895	3,458	-	-	-	1,525,366
Glenn	61,273	265,519	13,044	201	70,403	2,049	-	-	-	412,489
Humboldt	4,498	190,987	-	-	-	-	-	-	-	195,485
Imperial	115,131	3,391	-	-	-	-	-	-	-	118,522
Kern	627,957	895,757	22,198	-	122,151	-	-	-	-	1,668,064
Kings	265,610	108,775	28,868	227	239,678	9,393	-	-	-	652,551
Lake	5,287	43,260	-	-	-	-	-	-	-	48,548
Lassen	15,894	280,947	546	34	11,850	7,127	-	-	-	316,398
Los Angeles	-	-	-	-	-	-	-	-	40,052	40,052
Madera	183,256	281,008	12,707	382	39,954	2,078	328	-	-	519,712
Marin	1,597	83,218	-	-	290	16,760	-	-	-	101,865
Mariposa	-	203,880	-	-	-	-	-	-	-	203,880
Mendocino	34,342	437,892	-	-	-	-	-	-	-	472,234
Merced	243,696	185,759	-	-	-	-	-	-	-	429,456
Modoc	11,456	71,803	-	-	-	-	-	-	-	83,260
Mono	13,310	-	-	-	-	-	-	-	-	13,310
Monterey	18,237	661,434	7,248	620	16,225	6,379	-	-	453	710,596
Napa	7,999	44,156	-	-	-	-	-	-	-	52,155
Nevada	5,104	470	-	-	-	-	-	-	-	5,574
Orange	469	3,983	-	-	-	-	-	-	-	4,452
Placer	11,651	20,914	-	-	720	307	-	-	-	33,591
Plumas	5,570	66,523	-	-	1,160	3,435	-	-	-	76,689
Riverside	44,015	5,846	-	-	-	-	255	214	-	50,330
Sacramento	85,717	83,689	-	-	-	-	-	-	-	169,406
San Benito	48,473	526,265	-	-	-	-	-	-	-	574,738
San Bernardino	2,162	2,371	-	-	-	-	-	-	-	4,533
San Diego	4,908	67,738	-	-	-	-	-	-	-	72,646
San Joaquin	306,939	132,373	15,023	79	34,384	10,733	-	-	-	499,531
San Luis Obispo	81,413	707,860	298	64	-	-	-	-	-	789,634
San Mateo	2,787	43,974	-	-	-	-	-	-	-	46,761
Santa Barbara	40,807	453,104	-	-	133	-	-	-	-	494,044
Santa Clara	10,297	308,764	-	-	-	-	-	-	-	319,061
Santa Cruz	2,357	14,906	82	32	-	10	-	-	-	17,386
Shasta	16,117	153,943	-	-	-	-	-	-	-	170,060
Sierra	1,919	34,161	-	773	-	2,904	-	-	-	39,757
Siskiyou	90,308	317,624	-	-	-	-	-	-	-	407,933
Solano	118,830	130,474	-	-	-	-	-	-	-	249,304
Sonoma	41,880	230,695	-	-	-	-	-	-	18,215	290,790
Stanislaus	255,407	393,050	-	-	-	-	-	-	-	648,458
Sutter	43,104	11,376	-	-	-	-	-	-	-	54,480
Tehama	45,331	732,045	2,655	2,467	1,191	5,044	-	-	-	788,733
Trinity	-	21,800	-	-	-	-	-	-	-	21,800
Tulare	586,042	511,501	10,727	-	-	-	-	-	686	1,108,956
Tuolumne	-	118,334	-	-	-	-	-	-	-	118,334
Ventura	45,566	77,511	1,514	660	437	244	-	-	-	125,932
Yolo	230,524	171,551	-	-	-	-	127	4	-	402,206
<b>Cities</b>										
Camarillo	75	1	-	-	-	-	-	-	-	76
Hayward	-	384	-	-	-	-	-	-	-	384
Menlo Park	-	255	-	-	-	-	-	-	-	255
Newark	-	2,805	-	-	-	-	-	-	-	2,805
Palo Alto	149	304	-	-	-	-	-	-	-	453
Perris	-	-	-	-	-	-	-	-	-	-
Redlands	-	-	-	-	-	-	-	-	-	-
<b>Totals</b>										
Counties	4,962,764	10,270,290	130,593	6,238	597,703	72,444	709	218	59,406	16,100,366
Cities	224	3,748	-	-	-	-	-	-	-	3,972
<b>Grand Totals</b>	<b>4,962,988</b>	<b>10,274,038</b>	<b>130,593</b>	<b>6,238</b>	<b>597,703</b>	<b>72,444</b>	<b>709</b>	<b>218</b>	<b>59,406</b>	<b>16,104,339</b>

Acres Eligible for Open Space Subvention Payment

Participating Local Jurisdictions	2005									
	Land Conservation Act		Farmland Security Zone				Agricultural Conservation Easement		Other Enforceable Restriction	TOTAL
	Prime	Nonprime	Urban		Non-Urban		Prime	Nonprime		
			Prime	Nonprime	Prime	Nonprime				
<b>Counties</b>										
Alameda	2,185	116,868	-	-	-	-	-	-	-	119,053
Amador	5,012	85,157	-	-	-	-	-	-	-	90,169
Butte	108,328	105,992	-	-	-	-	-	-	-	214,320
Calaveras	16,730	113,939	-	-	-	-	-	-	-	130,669
Colusa	63,645	193,467	15,881	699	39,227	2,342	-	-	-	315,262
Contra Costa	6,935	35,042	-	-	-	-	-	-	-	41,977
El Dorado	2,098	31,035	-	-	5	180	-	-	-	33,319
Fresno	1,004,013	485,363	-	-	20,611	3,458	-	-	-	1,513,445
Glenn	61,297	265,631	13,199	201	73,114	2,118	-	-	-	415,561
Humboldt	4,545	190,957	-	-	-	-	-	-	-	195,502
Imperial	122,100	3,762	-	-	-	-	-	-	-	125,862
Kern	617,604	895,137	22,884	-	127,390	-	-	-	-	1,663,015
Kings	225,132	106,587	28,868	227	239,823	9,393	-	-	-	610,031
Lake	5,102	43,120	-	-	-	-	-	-	-	48,222
Lassen	16,119	282,903	546	34	11,840	7,137	-	-	-	318,578
Los Angeles	-	-	-	-	-	-	-	-	40,052	40,052
Madera	158,570	281,408	12,610	362	40,285	2,078	328	-	-	495,640
Marin	1,597	83,951	-	-	290	16,772	-	-	-	102,611
Mariposa	-	204,569	-	-	-	-	-	-	-	204,569
Mendocino	34,035	447,024	-	-	-	-	-	-	-	481,059
Merced	245,147	186,863	-	-	-	-	-	-	-	432,010
Modoc	13,068	90,320	-	-	-	-	-	-	-	103,388
Mono	13,310	-	-	-	-	-	-	-	-	13,310
Monterey	26,928	655,452	12,267	1,695	11,194	5,339	-	-	2,338	715,211
Napa	9,208	44,179	-	-	-	-	-	-	-	53,387
Nevada	2,919	470	-	-	-	-	-	-	2,287	5,676
Orange	31	194	-	-	-	-	-	-	-	225
Placer	8,745	18,607	-	-	-	1,323	-	-	-	28,675
Plumas	5,570	66,523	-	-	1,160	3,435	-	-	-	76,689
Riverside	43,009	5,897	-	-	-	-	255	214	-	49,375
Sacramento	86,699	81,987	-	-	-	-	-	-	-	168,686
San Benito	48,262	525,911	-	-	-	-	-	-	-	574,173
San Bernardino	2,162	2,371	-	-	-	-	-	-	-	4,533
San Diego	4,847	57,763	-	-	-	-	-	-	-	62,610
San Joaquin	301,966	128,526	15,022	79	34,439	10,678	-	-	-	490,710
San Luis Obispo	81,219	689,850	298	82	55	64	-	-	-	771,569
San Mateo	2,787	43,974	-	-	-	-	-	-	-	46,761
Santa Barbara	43,330	432,356	-	-	133	-	-	-	-	475,818
Santa Clara	9,616	297,518	-	-	-	-	-	-	-	307,133
Santa Cruz	2,357	14,668	82	32	-	10	-	-	-	17,148
Shasta	16,779	157,825	-	-	-	-	-	-	-	174,604
Sierra	1,940	34,319	-	773	-	2,904	-	-	-	39,935
Siskiyou	90,405	317,801	-	-	-	-	-	-	-	408,207
Solano	116,789	132,041	-	-	-	-	-	-	-	248,830
Sonoma	41,822	229,537	-	-	-	-	-	-	-	271,359
Stanislaus	246,619	375,912	-	-	-	-	-	-	-	622,531
Sutter	44,180	11,376	-	-	-	-	-	-	-	55,556
Tehama	41,614	720,225	2,655	2,467	1,190	5,044	-	-	-	773,194
Trinity	-	21,800	-	-	-	-	-	-	-	21,800
Tulare	584,193	511,797	11,072	-	-	-	-	-	686	1,107,747
Tuolumne	-	117,539	-	-	-	-	-	-	-	117,539
Ventura	45,509	77,502	1,528	646	437	244	-	-	-	125,867
Yolo	229,684	169,060	158	1	-	-	127	4	-	399,034
<b>Cities</b>										
Camarillo	75	1	-	-	-	-	-	-	-	76
Hayward	-	384	-	-	-	-	-	-	-	384
Menlo Park	-	255	-	-	-	-	-	-	-	255
Newark	-	2,805	-	-	-	-	-	-	-	2,805
Palo Alto	149	304	-	-	-	-	-	-	-	453
Perris	-	-	-	-	-	-	-	-	-	-
Redlands	-	-	-	-	-	-	-	-	-	-
<b>Totals</b>										
Counties	4,865,759	10,192,077	137,068	7,299	601,194	72,521	709	218	45,362	15,922,208
Cities	224	3,748	-	-	-	-	-	-	-	3,972
<b>Grand Totals</b>	<b>4,865,983</b>	<b>10,195,826</b>	<b>137,068</b>	<b>7,299</b>	<b>601,194</b>	<b>72,521</b>	<b>709</b>	<b>218</b>	<b>45,362</b>	<b>15,926,181</b>



Open Space Subvention Act Payment Claims

Participating Local Jurisdictions	2004										TOTAL
	Land Conservation Act		Farmland Security Zone				Agricultural Conservation Easement		Other Enforceable Restriction		
	Prime	Nonprime	Urban		Non-Urban		Prime	Nonprime			
			Prime	Nonprime	Prime	Nonprime					
<b>Counties</b>											
Alameda	\$ 24,184	\$ 116,061	\$ -	\$ -	\$ -	\$ -	\$ -	\$ -	\$ -	\$ -	\$ 140,245
Amador	\$ 25,500	\$ 84,868	\$ -	\$ -	\$ -	\$ -	\$ -	\$ -	\$ -	\$ -	\$ 110,367
Butte	\$ 544,686	\$ 105,806	\$ -	\$ -	\$ -	\$ -	\$ -	\$ -	\$ -	\$ -	\$ 650,491
Calaveras	\$ 84,052	\$ 115,453	\$ -	\$ -	\$ -	\$ -	\$ -	\$ -	\$ -	\$ -	\$ 199,505
Colusa	\$ 321,909	\$ 195,422	\$ 125,477	\$ 5,594	\$ 196,137	\$ 2,342	\$ -	\$ -	\$ -	\$ -	\$ 846,880
Contra Costa	\$ 35,050	\$ 35,215	\$ -	\$ -	\$ -	\$ -	\$ -	\$ -	\$ -	\$ -	\$ 70,265
El Dorado	\$ 10,653	\$ 31,136	\$ -	\$ -	\$ 25	\$ 180	\$ -	\$ -	\$ -	\$ -	\$ 41,994
Fresno	\$ 5,081,590	\$ 485,695	\$ -	\$ -	\$ 99,474	\$ 3,458	\$ -	\$ -	\$ -	\$ -	\$ 5,670,218
Glenn	\$ 306,363	\$ 265,519	\$ 104,353	\$ 1,612	\$ 352,013	\$ 2,049	\$ -	\$ -	\$ -	\$ -	\$ 1,031,909
Humboldt	\$ 22,489	\$ 190,987	\$ -	\$ -	\$ -	\$ -	\$ -	\$ -	\$ -	\$ -	\$ 213,475
Imperial	\$ 575,654	\$ 3,391	\$ -	\$ -	\$ -	\$ -	\$ -	\$ -	\$ -	\$ -	\$ 579,045
Kern	\$ 3,139,787	\$ 895,757	\$ 177,581	\$ -	\$ 610,757	\$ -	\$ -	\$ -	\$ -	\$ -	\$ 4,823,882
Kings	\$ 1,328,048	\$ 108,775	\$ 230,942	\$ 1,817	\$ 1,198,391	\$ 9,393	\$ -	\$ -	\$ -	\$ -	\$ 2,877,367
Lake	\$ 26,437	\$ 43,260	\$ -	\$ -	\$ -	\$ -	\$ -	\$ -	\$ -	\$ -	\$ 69,697
Lassen	\$ 79,472	\$ 280,947	\$ 4,364	\$ 272	\$ 59,249	\$ 7,127	\$ -	\$ -	\$ -	\$ -	\$ 431,430
Los Angeles	\$ -	\$ -	\$ -	\$ -	\$ -	\$ -	\$ -	\$ -	\$ 40,052	\$ -	\$ 40,052
Madera	\$ 916,281	\$ 281,008	\$ 101,655	\$ 3,053	\$ 199,770	\$ 2,078	\$ 1,639	\$ -	\$ -	\$ -	\$ 1,505,483
Marin	\$ 7,987	\$ 83,218	\$ -	\$ -	\$ 1,450	\$ 16,760	\$ -	\$ -	\$ -	\$ -	\$ 109,414
Mariposa	\$ -	\$ 203,880	\$ -	\$ -	\$ -	\$ -	\$ -	\$ -	\$ -	\$ -	\$ 203,880
Mendocino	\$ 171,710	\$ 437,892	\$ -	\$ -	\$ -	\$ -	\$ -	\$ -	\$ -	\$ -	\$ 609,602
Merced	\$ 1,218,482	\$ 185,759	\$ -	\$ -	\$ -	\$ -	\$ -	\$ -	\$ -	\$ -	\$ 1,404,241
Modoc	\$ 57,281	\$ 71,803	\$ -	\$ -	\$ -	\$ -	\$ -	\$ -	\$ -	\$ -	\$ 129,084
Mono	\$ 66,548	\$ -	\$ -	\$ -	\$ -	\$ -	\$ -	\$ -	\$ -	\$ -	\$ 66,548
Monterey	\$ 91,185	\$ 661,434	\$ 57,985	\$ 4,960	\$ 81,127	\$ 6,379	\$ -	\$ -	\$ 453	\$ -	\$ 903,523
Napa	\$ 39,995	\$ 44,156	\$ -	\$ -	\$ -	\$ -	\$ -	\$ -	\$ -	\$ -	\$ 84,151
Nevada	\$ 25,522	\$ 470	\$ -	\$ -	\$ -	\$ -	\$ -	\$ -	\$ -	\$ -	\$ 25,991
Orange	\$ 2,346	\$ 3,983	\$ -	\$ -	\$ -	\$ -	\$ -	\$ -	\$ -	\$ -	\$ 6,329
Placer	\$ 58,253	\$ 20,914	\$ -	\$ -	\$ 3,598	\$ 307	\$ -	\$ -	\$ -	\$ -	\$ 83,071
Plumas	\$ 27,850	\$ 66,523	\$ -	\$ -	\$ 5,800	\$ 3,435	\$ -	\$ -	\$ -	\$ -	\$ 103,609
Riverside	\$ 220,074	\$ 5,846	\$ -	\$ -	\$ -	\$ -	\$ 1,275	\$ 214	\$ -	\$ -	\$ 227,409
Sacramento	\$ 428,585	\$ 83,689	\$ -	\$ -	\$ -	\$ -	\$ -	\$ -	\$ -	\$ -	\$ 512,274
San Benito	\$ 242,365	\$ 526,265	\$ -	\$ -	\$ -	\$ -	\$ -	\$ -	\$ -	\$ -	\$ 768,630
San Bernardino	\$ 10,809	\$ 2,371	\$ -	\$ -	\$ -	\$ -	\$ -	\$ -	\$ -	\$ -	\$ 13,181
San Diego	\$ 24,540	\$ 67,738	\$ -	\$ -	\$ -	\$ -	\$ -	\$ -	\$ -	\$ -	\$ 92,278
San Joaquin	\$ 1,534,695	\$ 132,373	\$ 120,182	\$ 632	\$ 171,920	\$ 10,733	\$ -	\$ -	\$ -	\$ -	\$ 1,970,534
San Luis Obispo	\$ 407,063	\$ 707,860	\$ 2,384	\$ 512	\$ -	\$ -	\$ -	\$ -	\$ -	\$ -	\$ 1,117,819
San Mateo	\$ 13,936	\$ 43,974	\$ -	\$ -	\$ -	\$ -	\$ -	\$ -	\$ -	\$ -	\$ 57,909
Santa Barbara	\$ 204,035	\$ 453,104	\$ -	\$ -	\$ 666	\$ -	\$ -	\$ -	\$ -	\$ -	\$ 657,805
Santa Clara	\$ 51,484	\$ 308,764	\$ -	\$ -	\$ -	\$ -	\$ -	\$ -	\$ -	\$ -	\$ 360,248
Santa Cruz	\$ 11,783	\$ 14,906	\$ 653	\$ 258	\$ -	\$ 10	\$ -	\$ -	\$ -	\$ -	\$ 27,609
Shasta	\$ 80,585	\$ 153,943	\$ -	\$ -	\$ -	\$ -	\$ -	\$ -	\$ -	\$ -	\$ 234,528
Sierra	\$ 9,595	\$ 34,161	\$ -	\$ 6,186	\$ -	\$ 2,904	\$ -	\$ -	\$ -	\$ -	\$ 52,845
Siskiyou	\$ 451,542	\$ 317,624	\$ -	\$ -	\$ -	\$ -	\$ -	\$ -	\$ -	\$ -	\$ 769,166
Solano	\$ 594,151	\$ 130,474	\$ -	\$ -	\$ -	\$ -	\$ -	\$ -	\$ -	\$ -	\$ 724,625
Sonoma	\$ 209,400	\$ 230,695	\$ -	\$ -	\$ -	\$ -	\$ -	\$ -	\$ 18,215	\$ -	\$ 458,309
Stanislaus	\$ 1,277,035	\$ 393,050	\$ -	\$ -	\$ -	\$ -	\$ -	\$ -	\$ -	\$ -	\$ 1,670,086
Sutter	\$ 215,518	\$ 11,378	\$ -	\$ -	\$ -	\$ -	\$ -	\$ -	\$ -	\$ -	\$ 226,894
Tehama	\$ 226,657	\$ 732,045	\$ 21,242	\$ 19,735	\$ 5,950	\$ 5,044	\$ -	\$ -	\$ -	\$ -	\$ 1,010,673
Trinity	\$ -	\$ 21,800	\$ -	\$ -	\$ -	\$ -	\$ -	\$ -	\$ -	\$ -	\$ 21,800
Tulare	\$ 2,930,211	\$ 511,501	\$ 85,817	\$ -	\$ -	\$ -	\$ -	\$ -	\$ 686	\$ -	\$ 3,528,215
Tuolumne	\$ -	\$ 118,334	\$ -	\$ -	\$ -	\$ -	\$ -	\$ -	\$ -	\$ -	\$ 118,334
Ventura	\$ 227,828	\$ 77,511	\$ 12,112	\$ 5,277	\$ 2,185	\$ 244	\$ -	\$ -	\$ -	\$ -	\$ 325,159
Yolo	\$ 1,152,620	\$ 171,551	\$ -	\$ -	\$ -	\$ -	\$ 633	\$ 4	\$ -	\$ -	\$ 1,324,809
<b>Cities</b>											
Camarillo	\$ 375	\$ 1	\$ -	\$ -	\$ -	\$ -	\$ -	\$ -	\$ -	\$ -	\$ 376
Hayward	\$ -	\$ 384	\$ -	\$ -	\$ -	\$ -	\$ -	\$ -	\$ -	\$ -	\$ 384
Menlo Park	\$ -	\$ 255	\$ -	\$ -	\$ -	\$ -	\$ -	\$ -	\$ -	\$ -	\$ 255
Newark	\$ -	\$ 2,805	\$ -	\$ -	\$ -	\$ -	\$ -	\$ -	\$ -	\$ -	\$ 2,805
Palo Alto	\$ 745	\$ 304	\$ -	\$ -	\$ -	\$ -	\$ -	\$ -	\$ -	\$ -	\$ 1,049
Perris	\$ -	\$ -	\$ -	\$ -	\$ -	\$ -	\$ -	\$ -	\$ -	\$ -	\$ -
Redlands	\$ -	\$ -	\$ -	\$ -	\$ -	\$ -	\$ -	\$ -	\$ -	\$ -	\$ -
<b>Totals</b>											
Counties	\$ 24,813,821	\$ 10,270,290	\$ 1,044,747	\$ 49,907	\$ 2,988,512	\$ 72,444	\$ 3,547	\$ 218	\$ 59,406	\$ -	\$ 39,302,892
Cities	\$ 1,120	\$ 3,748	\$ -	\$ -	\$ -	\$ -	\$ -	\$ -	\$ -	\$ -	\$ 4,868
<b>Grand Totals</b>	\$ 24,814,941	\$ 10,274,038	\$ 1,044,747	\$ 49,907	\$ 2,988,512	\$ 72,444	\$ 3,547	\$ 218	\$ 59,406	\$ -	\$ 39,307,760

Open Space Subvention Act Payment Claims

Participating Local Jurisdictions	2005										
	Land Conservation Act		Farmland Security Zone				Agricultural Conservation Easement		Other Enforceable Restriction	TOTAL	
	Prime	Nonprime	Urban		Non-Urban		Prime	Nonprime			
			Prime	Nonprime	Prime	Nonprime					
<b>Counties</b>											
Alameda	\$ 10,924	\$ 116,868	\$ -	\$ -	\$ -	\$ -	\$ -	\$ -	\$ -	\$ -	\$ 127,791
Amador	\$ 25,060	\$ 85,157	\$ -	\$ -	\$ -	\$ -	\$ -	\$ -	\$ -	\$ -	\$ 110,217
Butte	\$ 541,641	\$ 105,992	\$ -	\$ -	\$ -	\$ -	\$ -	\$ -	\$ -	\$ -	\$ 647,632
Calaveras	\$ 83,650	\$ 113,939	\$ -	\$ -	\$ -	\$ -	\$ -	\$ -	\$ -	\$ -	\$ 197,589
Colusa	\$ 318,227	\$ 193,467	\$ 127,049	\$ 5,594	\$ 196,137	\$ 2,342	\$ -	\$ -	\$ -	\$ -	\$ 842,815
Contra Costa	\$ 34,675	\$ 35,042	\$ -	\$ -	\$ -	\$ -	\$ -	\$ -	\$ -	\$ -	\$ 69,717
El Dorado	\$ 10,491	\$ 31,035	\$ -	\$ -	\$ 25	\$ 180	\$ -	\$ -	\$ -	\$ -	\$ 41,732
Fresno	\$ 5,020,065	\$ 485,363	\$ -	\$ -	\$ 103,054	\$ 3,458	\$ -	\$ -	\$ -	\$ -	\$ 5,611,941
Glenn	\$ 306,483	\$ 265,631	\$ 105,593	\$ 1,612	\$ 365,570	\$ 2,118	\$ -	\$ -	\$ -	\$ -	\$ 1,047,008
Humboldt	\$ 22,724	\$ 190,957	\$ -	\$ -	\$ -	\$ -	\$ -	\$ -	\$ -	\$ -	\$ 213,681
Imperial	\$ 610,501	\$ 3,762	\$ -	\$ -	\$ -	\$ -	\$ -	\$ -	\$ -	\$ -	\$ 614,263
Kern	\$ 3,088,021	\$ 895,137	\$ 183,071	\$ -	\$ 636,950	\$ -	\$ -	\$ -	\$ -	\$ -	\$ 4,803,179
Kings	\$ 1,125,662	\$ 106,587	\$ 230,942	\$ 1,817	\$ 1,199,116	\$ 9,393	\$ -	\$ -	\$ -	\$ -	\$ 2,673,518
Lake	\$ 25,510	\$ 43,120	\$ -	\$ -	\$ -	\$ -	\$ -	\$ -	\$ -	\$ -	\$ 68,631
Lassen	\$ 80,593	\$ 282,903	\$ 4,364	\$ 272	\$ 59,199	\$ 7,137	\$ -	\$ -	\$ -	\$ -	\$ 434,467
Los Angeles	\$ -	\$ -	\$ -	\$ -	\$ -	\$ -	\$ -	\$ -	\$ 40,052	\$ -	\$ 40,052
Madera	\$ 792,848	\$ 281,408	\$ 100,884	\$ 2,893	\$ 201,426	\$ 2,078	\$ 1,639	\$ -	\$ -	\$ -	\$ 1,383,174
Marin	\$ 7,987	\$ 83,951	\$ -	\$ -	\$ 1,450	\$ 16,772	\$ -	\$ -	\$ -	\$ -	\$ 110,160
Mariposa	\$ -	\$ 204,569	\$ -	\$ -	\$ -	\$ -	\$ -	\$ -	\$ -	\$ -	\$ 204,569
Mendocino	\$ 170,175	\$ 447,024	\$ -	\$ -	\$ -	\$ -	\$ -	\$ -	\$ -	\$ -	\$ 617,199
Merced	\$ 1,225,734	\$ 186,863	\$ -	\$ -	\$ -	\$ -	\$ -	\$ -	\$ -	\$ -	\$ 1,412,597
Modoc	\$ 65,340	\$ 90,320	\$ -	\$ -	\$ -	\$ -	\$ -	\$ -	\$ -	\$ -	\$ 155,660
Mono	\$ 66,548	\$ -	\$ -	\$ -	\$ -	\$ -	\$ -	\$ -	\$ -	\$ -	\$ 66,548
Monterey	\$ 134,639	\$ 655,452	\$ 98,133	\$ 13,559	\$ 55,970	\$ 5,339	\$ -	\$ -	\$ 2,338	\$ -	\$ 965,429
Napa	\$ 46,041	\$ 44,179	\$ -	\$ -	\$ -	\$ -	\$ -	\$ -	\$ -	\$ -	\$ 90,219
Nevada	\$ 14,596	\$ 470	\$ -	\$ -	\$ -	\$ -	\$ -	\$ -	\$ 2,287	\$ -	\$ 17,353
Orange	\$ 157	\$ 194	\$ -	\$ -	\$ -	\$ -	\$ -	\$ -	\$ -	\$ -	\$ 351
Placer	\$ 43,724	\$ 18,607	\$ -	\$ -	\$ -	\$ 1,323	\$ -	\$ -	\$ -	\$ -	\$ 63,655
Plumas	\$ 27,850	\$ 66,523	\$ -	\$ -	\$ 5,800	\$ 3,435	\$ -	\$ -	\$ -	\$ -	\$ 103,609
Riverside	\$ 215,045	\$ 5,897	\$ -	\$ -	\$ -	\$ -	\$ 1,275	\$ 214	\$ -	\$ -	\$ 222,430
Sacramento	\$ 433,495	\$ 81,987	\$ -	\$ -	\$ -	\$ -	\$ -	\$ -	\$ -	\$ -	\$ 515,482
San Benito	\$ 241,310	\$ 525,911	\$ -	\$ -	\$ -	\$ -	\$ -	\$ -	\$ -	\$ -	\$ 767,221
San Bernardino	\$ 10,809	\$ 2,371	\$ -	\$ -	\$ -	\$ -	\$ -	\$ -	\$ -	\$ -	\$ 13,181
San Diego	\$ 24,235	\$ 57,763	\$ -	\$ -	\$ -	\$ -	\$ -	\$ -	\$ -	\$ -	\$ 81,998
San Joaquin	\$ 1,509,829	\$ 128,526	\$ 120,174	\$ 632	\$ 172,195	\$ 10,678	\$ -	\$ -	\$ -	\$ -	\$ 1,942,034
San Luis Obispo	\$ 406,097	\$ 689,850	\$ 2,384	\$ 656	\$ 275	\$ 64	\$ -	\$ -	\$ -	\$ -	\$ 1,099,327
San Mateo	\$ 13,936	\$ 43,974	\$ -	\$ -	\$ -	\$ -	\$ -	\$ -	\$ -	\$ -	\$ 57,909
Santa Barbara	\$ 216,648	\$ 432,356	\$ -	\$ -	\$ 666	\$ -	\$ -	\$ -	\$ -	\$ -	\$ 649,670
Santa Clara	\$ 48,078	\$ 297,518	\$ -	\$ -	\$ -	\$ -	\$ -	\$ -	\$ -	\$ -	\$ 345,596
Santa Cruz	\$ 11,783	\$ 14,668	\$ 653	\$ 258	\$ -	\$ 10	\$ -	\$ -	\$ -	\$ -	\$ 27,371
Shasta	\$ 83,895	\$ 157,825	\$ -	\$ -	\$ -	\$ -	\$ -	\$ -	\$ -	\$ -	\$ 241,720
Sierra	\$ 9,700	\$ 34,319	\$ -	\$ 6,186	\$ -	\$ 2,904	\$ -	\$ -	\$ -	\$ -	\$ 53,108
Siskiyou	\$ 452,027	\$ 317,801	\$ -	\$ -	\$ -	\$ -	\$ -	\$ -	\$ -	\$ -	\$ 769,828
Solano	\$ 583,943	\$ 132,041	\$ -	\$ -	\$ -	\$ -	\$ -	\$ -	\$ -	\$ -	\$ 715,984
Sonoma	\$ 209,109	\$ 229,537	\$ -	\$ -	\$ -	\$ -	\$ -	\$ -	\$ -	\$ -	\$ 438,646
Stanislaus	\$ 1,233,097	\$ 375,912	\$ -	\$ -	\$ -	\$ -	\$ -	\$ -	\$ -	\$ -	\$ 1,609,009
Sutter	\$ 220,900	\$ 11,376	\$ -	\$ -	\$ -	\$ -	\$ -	\$ -	\$ -	\$ -	\$ 232,276
Tehama	\$ 208,068	\$ 720,225	\$ 21,242	\$ 19,735	\$ 5,950	\$ 5,044	\$ -	\$ -	\$ -	\$ -	\$ 980,264
Trinity	\$ -	\$ 21,800	\$ -	\$ -	\$ -	\$ -	\$ -	\$ -	\$ -	\$ -	\$ 21,800
Tulare	\$ 2,920,963	\$ 511,797	\$ 88,573	\$ -	\$ -	\$ -	\$ -	\$ -	\$ 686	\$ -	\$ 3,522,019
Tuolumne	\$ -	\$ 117,539	\$ -	\$ -	\$ -	\$ -	\$ -	\$ -	\$ -	\$ -	\$ 117,539
Ventura	\$ 227,547	\$ 77,502	\$ 12,220	\$ 5,171	\$ 2,185	\$ 244	\$ -	\$ -	\$ -	\$ -	\$ 324,870
Yolo	\$ 1,148,419	\$ 169,060	\$ 1,265	\$ 8	\$ -	\$ -	\$ 633	\$ 4	\$ -	\$ -	\$ 1,319,389
<b>Cities</b>											
Camarillo	\$ 375	\$ 1	\$ -	\$ -	\$ -	\$ -	\$ -	\$ -	\$ -	\$ -	\$ 376
Hayward	\$ -	\$ 384	\$ -	\$ -	\$ -	\$ -	\$ -	\$ -	\$ -	\$ -	\$ 384
Menlo Park	\$ -	\$ 255	\$ -	\$ -	\$ -	\$ -	\$ -	\$ -	\$ -	\$ -	\$ 255
Newark	\$ -	\$ 2,805	\$ -	\$ -	\$ -	\$ -	\$ -	\$ -	\$ -	\$ -	\$ 2,805
Palo Alto	\$ 745	\$ 304	\$ -	\$ -	\$ -	\$ -	\$ -	\$ -	\$ -	\$ -	\$ 1,049
Perris	\$ -	\$ -	\$ -	\$ -	\$ -	\$ -	\$ -	\$ -	\$ -	\$ -	\$ -
Redlands	\$ -	\$ -	\$ -	\$ -	\$ -	\$ -	\$ -	\$ -	\$ -	\$ -	\$ -
<b>Totals</b>											
Counties	\$ 24,328,797	\$ 10,192,077	\$ 1,096,546	\$ 58,391	\$ 3,005,968	\$ 72,521	\$ 3,547	\$ 218	\$ 45,362	\$ -	\$ 38,803,428
Cities	\$ 1,120	\$ 3,748	\$ -	\$ -	\$ -	\$ -	\$ -	\$ -	\$ -	\$ -	\$ 4,868
<b>Grand Totals</b>	\$ 24,329,917	\$ 10,195,826	\$ 1,096,546	\$ 58,391	\$ 3,005,968	\$ 72,521	\$ 3,547	\$ 218	\$ 45,362	\$ -	\$ 38,808,296

County	Internet Mapping Service	Parcel Data	WA ID	Free Data	Link
Alameda	No	Yes	Yes	No	<a href="http://www.acgov.org/prop_assessment_app/index.jsp">http://www.acgov.org/prop_assessment_app/index.jsp</a>
Alpine	No	No	No	No	
Amador	No	Yes	No	Yes	<a href="http://www.co.amador.ca.us/ACGIS/gisdata.htm">http://www.co.amador.ca.us/ACGIS/gisdata.htm</a>
Butte	No	No	No	No	
Calaveras	Yes	Yes	No	Yes	<a href="http://www.co.calaveras.ca.us/departments/gisproj.asp">http://www.co.calaveras.ca.us/departments/gisproj.asp</a>
					<a href="ftp://ccwgov.co.calaveras.ca.us/GIS/">ftp://ccwgov.co.calaveras.ca.us/GIS/</a>
Colusa	No	No	No	No	
Contra Costa	Yes	Yes	Yes	No	<a href="http://www.co.contra-costa.ca.us/">http://www.co.contra-costa.ca.us/</a>
Del Norte	No	No	No	No	
El Dorado	No	Yes	No	No	<a href="http://main.co.el-dorado.ca.us/CGI/WWB012/WWM400/A">http://main.co.el-dorado.ca.us/CGI/WWB012/WWM400/A</a>
					<a href="http://www.co.el-dorado.ca.us/planning/ParcelData/Disclaimer.aspx">http://www.co.el-dorado.ca.us/planning/ParcelData/Disclaimer.aspx</a>
Fresno	No	No	No	No	<a href="http://www.co.fresno.ca.us/4510/4360/cds.htm">http://www.co.fresno.ca.us/4510/4360/cds.htm</a>
Glenn	No	No	No	No	
Humboldt	No	Yes	No	Yes	<a href="http://www.co.humboldt.ca.us/planning/maps/datainventory/gisdata.list.aspx">http://www.co.humboldt.ca.us/planning/maps/datainventory/gisdata.list.aspx</a>
Imperial	Yes	Yes	No	No	<a href="http://imperialcounty.net/Assessor/">http://imperialcounty.net/Assessor/</a>
Inyo	No	No	No	No	
Kern	Yes	Yes	No	Yes	<a href="http://www.co.kern.ca.us/gis/mapping_disclaimer.asp">http://www.co.kern.ca.us/gis/mapping_disclaimer.asp</a>
					<a href="http://www.co.kern.ca.us/gis/downloads.asp">http://www.co.kern.ca.us/gis/downloads.asp</a>
Kings	No	No	No	No	<a href="http://www.countyofkings.com/planning/Plan/GIS.htm">http://www.countyofkings.com/planning/Plan/GIS.htm</a>
Lake	Yes	Yes	No	No	<a href="http://gis.co.lake.ca.us/">http://gis.co.lake.ca.us/</a>
Lassen	No	No	No	No	
Los Angeles	Yes	Yes	No	No	<a href="http://www.lacountyassessor.com/extranet/datamaps/pais.aspx">http://www.lacountyassessor.com/extranet/datamaps/pais.aspx</a>
Madera	No	No	No	No	
Marin	Yes	Yes	Yes	No	<a href="http://www.co.marin.ca.us/depts/IS/main/GIS/index.cfm">http://www.co.marin.ca.us/depts/IS/main/GIS/index.cfm</a>
Mariposa	No	No	No	No	
Mendocino	No	No	No	No	<a href="http://www.co.mendocino.ca.us/econdev/gis/">http://www.co.mendocino.ca.us/econdev/gis/</a>
Merced	Yes	Yes	No	No	<a href="http://web.co.merced.ca.us/planning/apnparcelsearchdirects.html">http://web.co.merced.ca.us/planning/apnparcelsearchdirects.html</a>
Modoc	No	No	No	No	
Mono	Yes	Yes	No	Yes	<a href="http://www.monocounty.ca.gov/services.html">http://www.monocounty.ca.gov/services.html</a>
Monterey	No	No	No	No	<a href="http://www.co.monterey.ca.us/gis/">http://www.co.monterey.ca.us/gis/</a>
Napa	Yes	Yes	No	Yes	<a href="http://gis.napa.ca.gov/">http://gis.napa.ca.gov/</a>
Nevada	Yes	Yes	No	No	<a href="http://new.mynevadacounty.com/gis/index.cfm?ccs=628">http://new.mynevadacounty.com/gis/index.cfm?ccs=628</a>
					<a href="http://new.mynevadacounty.com/gis/index.cfm?ccs=630">http://new.mynevadacounty.com/gis/index.cfm?ccs=630</a>
Orange	No	No	No	No	<a href="http://www.ocgeomatics.com/default.asp">http://www.ocgeomatics.com/default.asp</a>
Placer	No	Yes	No	No	<a href="http://www.placer.ca.gov/assessor/assessment-inquiry.htm">http://www.placer.ca.gov/assessor/assessment-inquiry.htm</a>
Plumas	No	No	No	No	
Riverside	Yes	Yes	No	No	<a href="http://www.rctlma.org/gis/gisdevelop.html">http://www.rctlma.org/gis/gisdevelop.html</a>
Sacramento	Yes	Yes	Yes	No	<a href="http://www.assessor.saccounty.net/accessibility/gis-accessibility-disclaimer.html">http://www.assessor.saccounty.net/accessibility/gis-accessibility-disclaimer.html</a>
San Benito					
San Bernardino	No	Yes	Yes	No	<a href="https://nppublic.co.san-bernardino.ca.us/newpims/PimsInterface.aspx">https://nppublic.co.san-bernardino.ca.us/newpims/PimsInterface.aspx</a>
San Diego	Yes	Yes	No	No	<a href="http://www.sangis.org/">http://www.sangis.org/</a>
San Francisco	Yes	Yes	Na	No	<a href="http://www.sfgov.org/site/gis_index.asp">http://www.sfgov.org/site/gis_index.asp</a>
San Joaquin	Yes	Yes	Yes	No	<a href="http://www.sjmap.org/mapapps.asp">http://www.sjmap.org/mapapps.asp</a>
San Luis Obispo	Yes	Yes	Yes	No	<a href="http://www.slocounty.ca.gov/planning/zoning.htm">http://www.slocounty.ca.gov/planning/zoning.htm</a>
San Mateo	No	Yes	No	No	<a href="http://www.sanmateocountytaxcollector.org/SMCWPS/pages/secureSearch.jsp">http://www.sanmateocountytaxcollector.org/SMCWPS/pages/secureSearch.jsp</a>
					<a href="http://www.co.sanmateo.ca.us/smc/departments/dpw/home/0,2151,5562541_9876737,00.html">http://www.co.sanmateo.ca.us/smc/departments/dpw/home/0,2151,5562541_9876737,00.html</a>
Santa Barbara	No	No	No	No	<a href="http://sbcountyplanning.org/forms/maps/index.cfm">http://sbcountyplanning.org/forms/maps/index.cfm</a>
Santa Clara	Yes	Yes	No	No	<a href="http://www.sccgov.org/portal/site/planning/">http://www.sccgov.org/portal/site/planning/</a>
Santa Cruz	Yes	Yes	No	Yes	<a href="http://gis.co.santa-cruz.ca.us/">http://gis.co.santa-cruz.ca.us/</a>
Shasta	No	Yes	No	No	<a href="http://www.co.shasta.ca.us/Departments/AssessorRecorder/PubInqDisclaimer.shtml">http://www.co.shasta.ca.us/Departments/AssessorRecorder/PubInqDisclaimer.shtml</a>
Sierra	Yes	Yes	Yes	No	<a href="http://www.sierracounty.ws/">http://www.sierracounty.ws/</a>
Siskiyou	No	No	No	No	
Solano	No	No	No	No	
Sonoma	No	No	No	No	
Stanislaus	Yes	Yes	No	No	<a href="http://www.co.stanislaus.ca.us/GIS/countyGIS.htm">http://www.co.stanislaus.ca.us/GIS/countyGIS.htm</a>
Sutter	No	Yes	No	No	<a href="http://www.co.sutter.ca.us/doc/government/depts/assessor/assessor">http://www.co.sutter.ca.us/doc/government/depts/assessor/assessor</a>
Tehama	No	No	No	No	
Trinity	No	No	No	No	
Tulare	No	No	No	No	
Tuolumne	No	Yes	No	Yes	<a href="http://portal.co.tuolumne.ca.us/psp/ps/TUP_COMMUNITY_DEV/ENTP/h/?tab=DEFAULT">http://portal.co.tuolumne.ca.us/psp/ps/TUP_COMMUNITY_DEV/ENTP/h/?tab=DEFAULT</a>
Ventura	No	Yes	No	Yes	<a href="http://gis.countyofventura.org/">http://gis.countyofventura.org/</a>
Yolo	Yes	Yes	Yes	No	<a href="http://www.yolocounty.org/gis/default.htm">http://www.yolocounty.org/gis/default.htm</a>
Yuba	Yes	Yes	Na	No	<a href="http://www.co.yuba.ca.us/content/departments/assessor/">http://www.co.yuba.ca.us/content/departments/assessor/</a>
					<a href="http://www.co.yuba.ca.us/content/departments/adminserv/infotech/gis.asp">http://www.co.yuba.ca.us/content/departments/adminserv/infotech/gis.asp</a>