

# Northumbria Research Link

Citation: Kleint, L., Antolin, Patrick, Tian, H., Judge, P., Testa, P., De Pontieu, B., Martínez-Sykora, J., Reeves, K. K., Wuelser, J. P., McKillop, S., Saar, S., Carlsson, M., Boerner, P., Hurlburt, N., Lemen, J., Tarbell, T. D., Title, A., Golub, L., Hansteen, V., Jaeggli, S. and Kankelborg, C. (2014) Detection of supersonic downflows and associated heating events in the transition region above sunspots. *The Astrophysical Journal Letters*, 789 (2). L42. ISSN 2041-8205

Published by: IOP Publishing

URL: <https://doi.org/10.1088/2041-8205/789/2/l42> <<https://doi.org/10.1088/2041-8205/789/2/l42>>

This version was downloaded from Northumbria Research Link: <http://nrl.northumbria.ac.uk/41246/>

Northumbria University has developed Northumbria Research Link (NRL) to enable users to access the University's research output. Copyright © and moral rights for items on NRL are retained by the individual author(s) and/or other copyright owners. Single copies of full items can be reproduced, displayed or performed, and given to third parties in any format or medium for personal research or study, educational, or not-for-profit purposes without prior permission or charge, provided the authors, title and full bibliographic details are given, as well as a hyperlink and/or URL to the original metadata page. The content must not be changed in any way. Full items must not be sold commercially in any format or medium without formal permission of the copyright holder. The full policy is available online: <http://nrl.northumbria.ac.uk/policies.html>

This document may differ from the final, published version of the research and has been made available online in accordance with publisher policies. To read and/or cite from the published version of the research, please visit the publisher's website (a subscription may be required.)



UniversityLibrary



**Northumbria**  
**University**  
NEWCASTLE

## DETECTION OF SUPERSONIC DOWNFLOWS AND ASSOCIATED HEATING EVENTS IN THE TRANSITION REGION ABOVE SUNSPOTS

L. KLEINT<sup>1,2,3</sup>, P. ANTOLIN<sup>4</sup>, H. TIAN<sup>5</sup>, P. JUDGE<sup>6</sup>, P. TESTA<sup>5</sup>, B. DE PONTIEU<sup>2</sup>, J. MARTÍNEZ-SYKORA<sup>1,2</sup>, K. K. REEVES<sup>5</sup>,  
J. P. WUELSER<sup>2</sup>, S. MCKILLOP<sup>5</sup>, S. SAAR<sup>5</sup>, M. CARLSSON<sup>7</sup>, P. BOERNER<sup>2</sup>, N. HURLBURT<sup>2</sup>, J. LEMEN<sup>2</sup>, T. D. TARBELL<sup>2</sup>,  
A. TITLE<sup>2</sup>, L. GOLUB<sup>5</sup>, V. HANSTEEN<sup>7</sup>, S. JAEGGLI<sup>8</sup>, AND C. KANKELBORG<sup>8</sup>

<sup>1</sup> Bay Area Environmental Research Institute, 625 2nd Street, Ste. 209, Petaluma, CA, USA; [lucia.kleint@fnw.ch](mailto:lucia.kleint@fnw.ch)

<sup>2</sup> Lockheed Martin Solar and Astrophysics Laboratory, 3251 Hanover St., Org. ADBS, Bldg. 252, Palo Alto, CA 94304, USA

<sup>3</sup> University of Applied Sciences and Arts Northwestern Switzerland, Bahnhofstrasse 6, 5210 Windisch, Switzerland

<sup>4</sup> National Astronomical Observatory of Japan, 2-21-1 Osawa, Mitaka, Tokyo 181-8588, Japan

<sup>5</sup> Harvard-Smithsonian Center for Astrophysics, 60 Garden Street, Cambridge, MA 02138, USA

<sup>6</sup> High Altitude Observatory/NCAR, P.O. Box 3000, Boulder, CO 80307, USA

<sup>7</sup> Institute of Theoretical Astrophysics, University of Oslo, P.O. Box 1029, Blindern, NO-0315 Oslo, Norway

<sup>8</sup> Department of Physics, Montana State University, Bozeman, P.O. Box 173840, Bozeman, MT 59717, USA

Received 2014 April 16; accepted 2014 June 13; published 2014 June 27

### ABSTRACT

Interface Region Imaging Spectrograph data allow us to study the solar transition region (TR) with an unprecedented spatial resolution of  $0''.33$ . On 2013 August 30, we observed bursts of high Doppler shifts suggesting strong supersonic downflows of up to  $200 \text{ km s}^{-1}$  and weaker, slightly slower upflows in the spectral lines Mg II  $h$  and  $k$ , C II 1336, Si IV 1394 Å, and 1403 Å, that are correlated with brightenings in the slitjaw images (SJIs). The bursty behavior lasts throughout the 2 hr observation, with average burst durations of about 20 s. The locations of these short-lived events appear to be the umbral and penumbral footpoints of EUV loops. Fast apparent downflows are observed along these loops in the SJIs and in the Atmospheric Imaging Assembly, suggesting that the loops are thermally unstable. We interpret the observations as cool material falling from coronal heights, and especially coronal rain produced along the thermally unstable loops, which leads to an increase of intensity at the loop footpoints, probably indicating an increase of density and temperature in the TR. The rain speeds are on the higher end of previously reported speeds for this phenomenon, and possibly higher than the free-fall velocity along the loops. On other observing days, similar bright dots are sometimes aligned into ribbons, resembling small flare ribbons. These observations provide a first insight into small-scale heating events in sunspots in the TR.

*Key words:* Sun: transition region – sunspots

*Online-only material:* animations, color figures

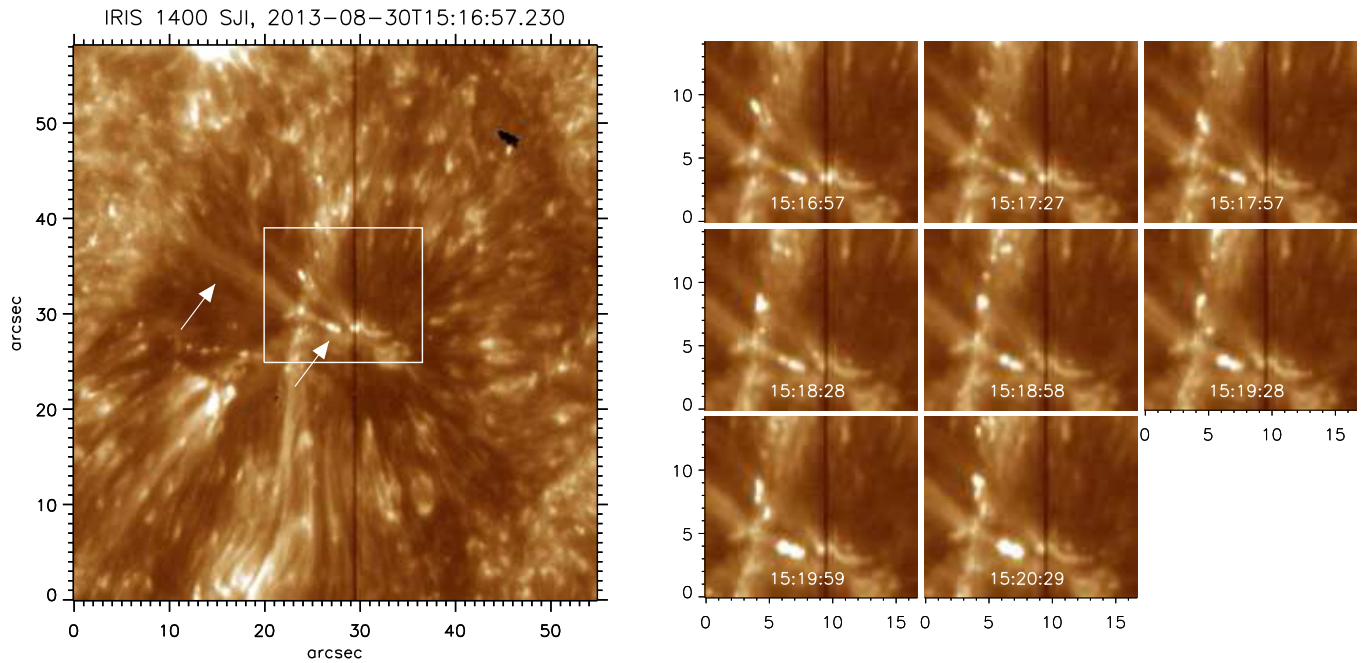
### 1. INTRODUCTION

Energy is transported along coronal loops, which can be observed as siphon flows, coronal rain, or plasma accelerated by flares and explosive events. Early observations of the transition region (TR) reported bright fan-shaped features above sunspot umbrae, called plumes (Foukal et al. 1974). Plumes are the bright lower parts of coronal loops and show downflows of  $20\text{--}40 \text{ km s}^{-1}$  at TR temperatures, with rare second components up to  $150 \text{ km s}^{-1}$  (Dere 1982; Nicolas et al. 1982; Gurman 1993). Their main characteristic is enhanced emission at upper TR temperatures ( $10^5\text{--}10^6 \text{ K}$ ), supported by measurements of the differential emission measure (Brosius 2005; Tian et al. 2009). Plumes can be stable over consecutive observing days (Brosius & White 2004), and fade when the downflows disappear (Brosius 2005).

The velocities measured at the footpoints of coronal loops give us insight into the physical processes of energy transport and may help to answer the open question of the coronal energy budget. In particular, driving mechanisms, such as siphon flows, free fall, or particle acceleration will result in different velocity distributions. The statistics of downflow velocities in the TR in a large number of sunspots are limited so far (Brekke et al. 1990; Gurman 1993; Brynildsen et al. 2004; Tian & et al. 2014) with some reports of no supersonic velocities above several umbrae, and others finding supersonic downflows in multiple sunspots, mostly above the penumbra.

Coronal rain corresponds to emission in chromospheric and TR lines from neutral or partially ionized material occurring at timescales of minutes along coronal loops (Kawaguchi 1970; Leroy 1972; Levine & Withbroe 1977). It is thought to be produced by the thermal instability mechanism (Parker 1953; Field 1965) when radiative losses exceed heating. Strong heating at loop footpoints may lead to a high plasma density in loops and therefore strong radiative losses. Numerical simulations indicate that in specific physical conditions (depending on the loop length and the heating scale length, among others), the conductive heating flux cannot compensate the radiative losses in the corona (Antiochos et al. 1999; Karpen et al. 2001). The radiative losses increase as the plasma cools, which may result in catastrophic (self-amplifying) cooling. The loss of temperature is accompanied by a loss of pressure, which accretes plasma from the surroundings, leading to the localized formation of condensations (Goldsmith 1971; Hildner 1974; Antiochos & Klimchuk 1991; Müller et al. 2004). Such structures appear clumpy in chromospheric lines and are usually observed to fall much slower than free fall (Mackay & Galsgaard 2001; Antolin & Verwichte 2011).

In the photosphere and chromosphere, supersonic downflows are either relatively rare or hard to observe. They were reported in the He I 10830 Å line at  $40 \text{ km s}^{-1}$  in plage and at loop footpoints near a pore (Schmidt et al. 2000; Lagg et al. 2007). In the latter case, the photospheric velocity at that location was only  $1 \text{ km s}^{-1}$ , indicating a transition from supersonic to subsonic



**Figure 1.** Sunspot with emission dots above its umbra/penumbra: AR 11836 with a lightbridge splitting the sunspot on 2013 August 30. A SJI 1400 overview is on the left, temporal evolutions of the region marked by a white box on the right. The vertical black line is the spectrograph slit. The left white arrow points to a faint loop that ends in a bright dot (right arrow). The images show that the emission evolves on timescales of minutes.

(An animation and a color version of this figure are available online.)

velocities between those layers. Such a transition leads to a shock front in the atmosphere and is visible as emission (Cargill & Priest 1980).

In this Letter, we will focus on first results from the recently launched Interface Region Imaging Spectrograph (IRIS; De Pontieu et al. 2014) showing highly dynamic bright footpoints of coronal loops/plumes with supersonic velocity components.

## 2. OBSERVATIONS AND DATA REDUCTION

IRIS records spectra in three passbands: the near ultraviolet (NUV; 2782.7–2835.1 Å), and the far ultraviolet (FUV; 1331.7–1358.4 Å and 1389.0–1407.0 Å). Additionally, a slitjaw image (SJI) can be obtained simultaneously with the spectra, in one of four different filters.

For the velocity analysis, we focus on an observation taken on 2013 August 30 from 13:09–15:24 UT. This observation was a medium-sized (60'' along the slit) sit-and-stare with an exposure time of 4 s, targeting AR 11836. SJI were obtained in the 1400 (Si IV) and 2796 (Mg II k) filters with a cadence of 10 s. Their spatial resolution is 0''.33 and 0''.4, respectively. Additionally, we show SJI 1400 images of AR 11793 that were obtained on 2013 July 19 during various observing sequences from 6 to 10 UT to illustrate the fast changes of a ribbon of bright emission dots. Calibrated Level 2 data were used, which include a dark correction, flatfielding, geometric and wavelength corrections. No detectable flares occurred during our observations.

We observed highly dynamic bright points in sunspots, which can change their appearance within seconds to minutes. They appear above locations in the umbra and penumbra, as determined from photospheric images. Figures 1 and 2 show examples from two observing days. For the global context, we aligned the 1400 IRIS SJI with the 1600 Å passband of The *Solar Dynamics Observatory* (SDO)/Atmospheric Imaging Assembly (AIA; Lemen et al. 2012). The co-alignment shows

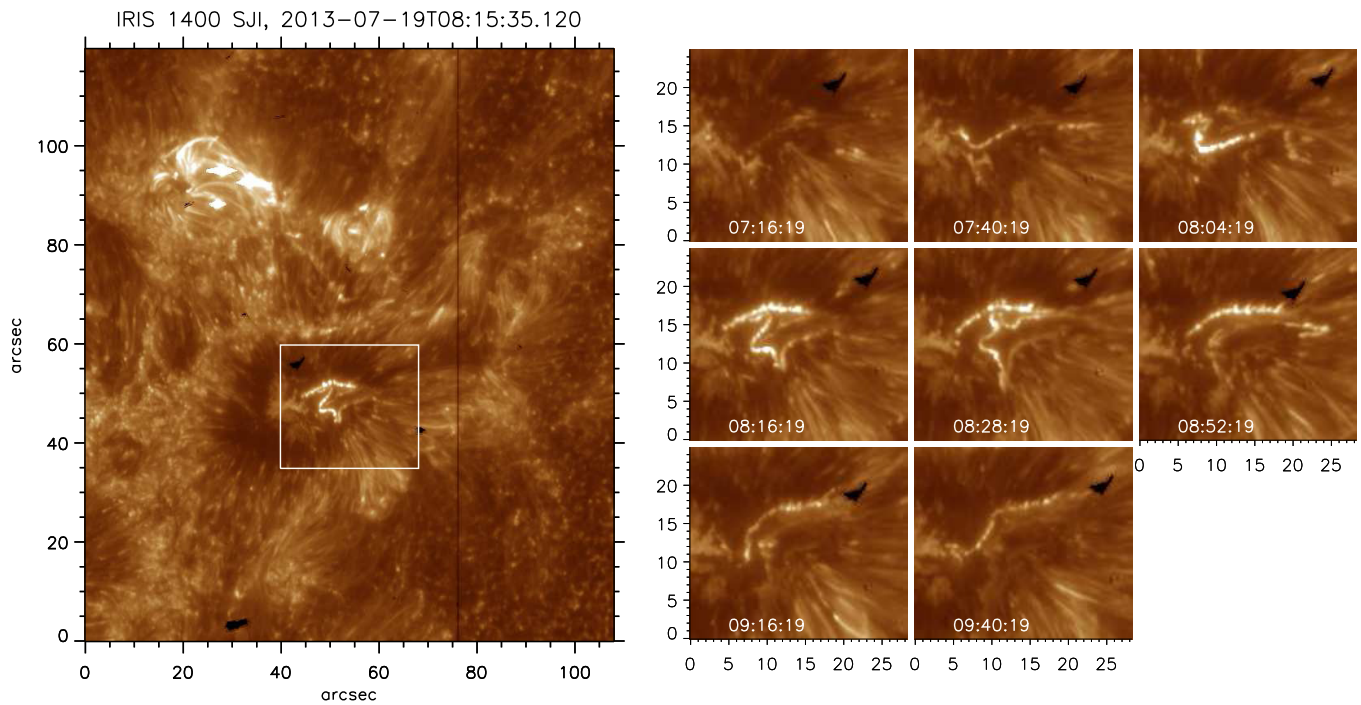
that the bright dots coincide with footpoints of coronal loops and is discussed in Section 3.

We found these bright dots to be relatively common in active regions, but they do not appear in every sunspot. However, due to their fast changing nature and their small size, it has been rare so far to have the IRIS spectrograph slit point exactly through one of them. The observation from 2013 August 30 lasted more than 2 hr and captured the spectra of several dots. Unfortunately, the slit did not cross any dots on 2013 July 19 and we thus have no information on the Doppler shifts, or confirmation that the dots in fact are the same phenomenon, even though their sizes and morphologies are similar. The temporal evolution on 2013 August 30 clearly shows apparent plasma motions into the sunspot along loop trajectories with the footpoints repeatedly increasing their intensities. While the events in the umbra are easiest to observe due to their contrast, similar events seem to occur in the lightbridge and the penumbra, but we do not exclude other mechanisms for other bright dots, especially the fainter dots in the penumbra.

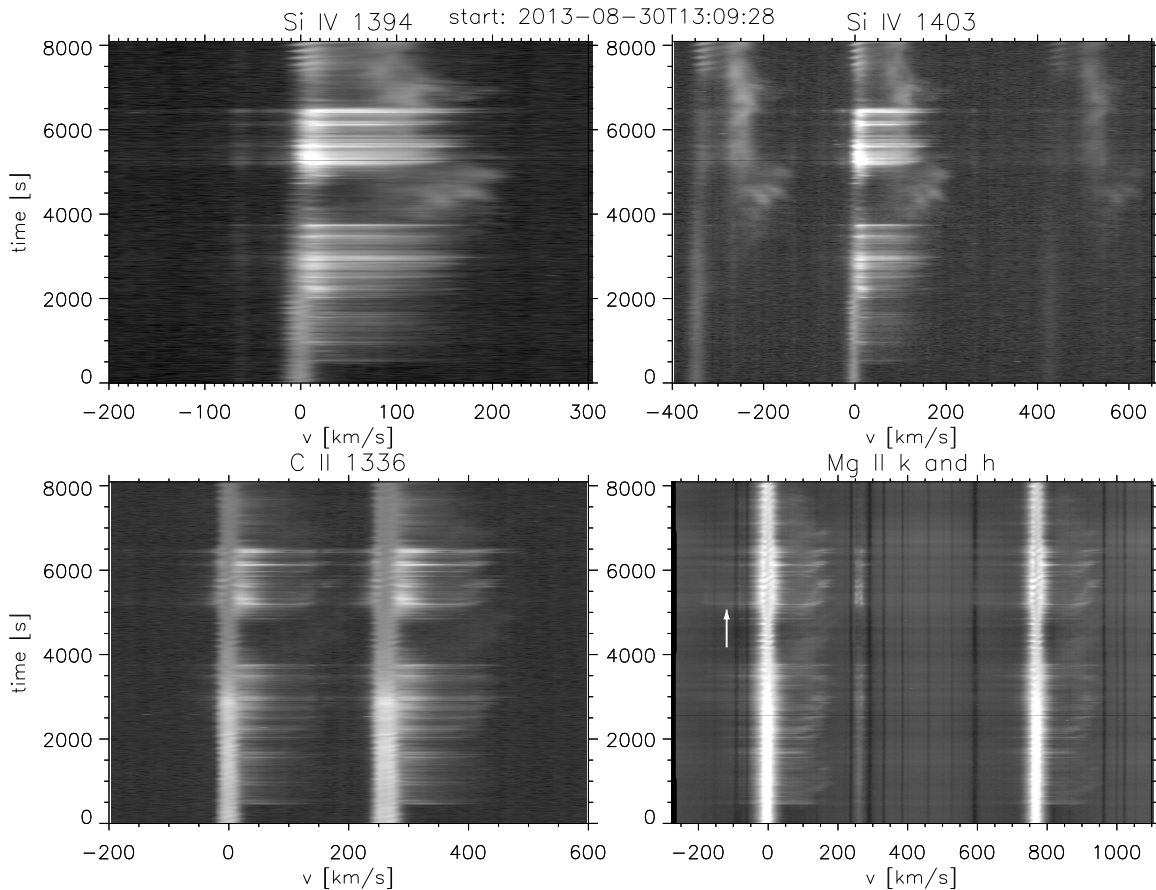
## 3. PROPERTIES OF THE BRIGHT FOOTPOINTS

The drastic intensity changes evolve within seconds to minutes, and may appear anywhere in sunspots. The shape of the ribbons may also change rapidly. Some observations only show single dots, which seem to be common in light bridges and the penumbra. With a FWHM of 0''.35–0''.7 (2–4 IRIS pixels), they are too small to be resolved in AIA images, which is why these events have not been reported before.

Figure 3 shows the temporal evolution of the Doppler shifts of several spectral lines in a pixel inside the sunspot's umbra where a bright dot appears at times. Bursts of strong downflows (redshifts) up to 200 km s<sup>-1</sup> are visible in all spectral lines. Significantly weaker intensity enhancements (“blueshifts”), generally below -100 km s<sup>-1</sup>, are also visible in all lines, but best in Mg II, probably because its highest signal-to-noise ratio. They

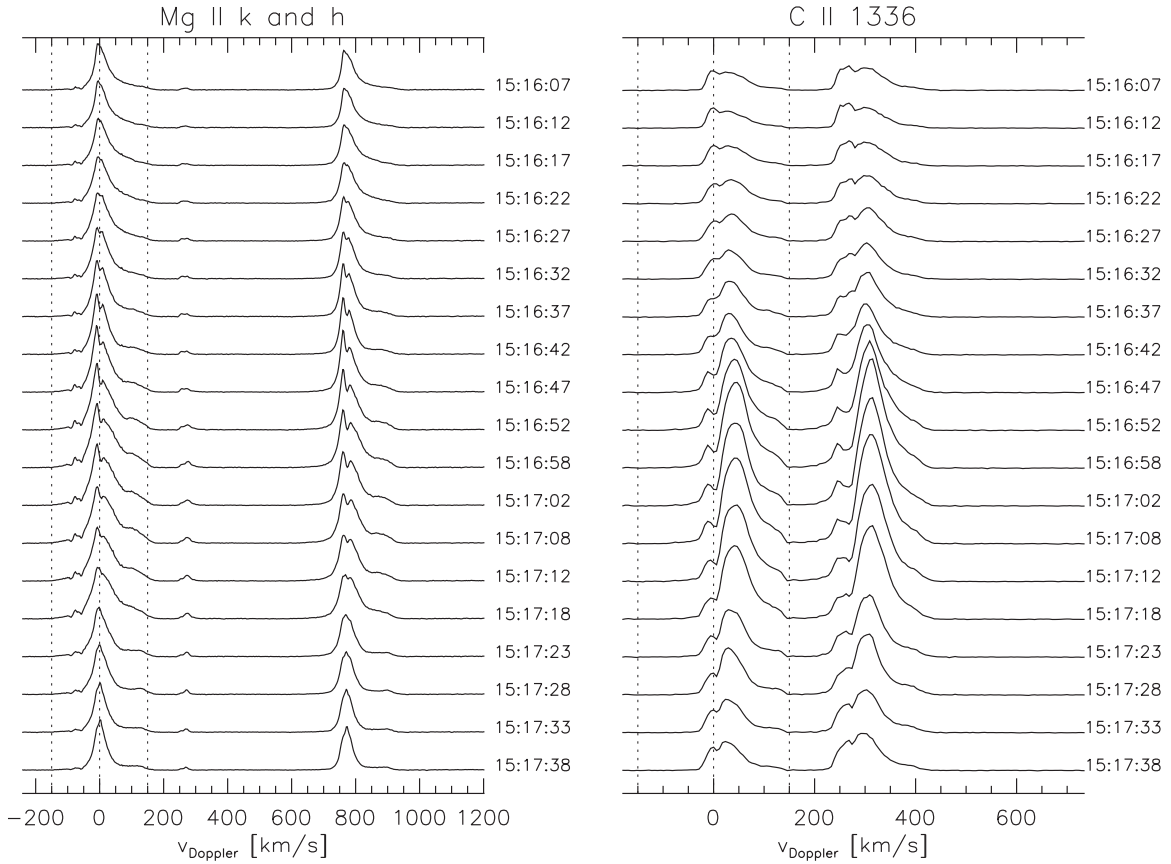


**Figure 2.** Similar to Figure 1. AR 11793 on 2013 July 19, which shows emission dots in the shape of ribbons that resemble strings of pearls. (An animation and a color version of this figure are available online.)



**Figure 3.** Temporal evolution (vertical axis) of a dot that repeatedly shows emission in four different spectral windows from 13:09 to 15:24 UT on 2013 August 30. Horizontal axes are labeled in Doppler units with zero chosen to coincide with one spectral line. Strong downflows (up to  $200 \text{ km s}^{-1}$ ) and weaker upflows (example location denoted by the arrow) are visible with burst lasting about 20 s. Also visible are sunspot oscillations with their characteristic sawtooth pattern. The images were scaled with the 10th root to strongly increase their contrast.





**Figure 4.** Evolution of Mg II and C II 1336 spectra during the appearance of a bright dot in the umbra on 2013 August 30. Their scaling is arbitrary and different for Mg II and C II. Especially the FUV spectra, such as C II, show significant changes in intensity and line shapes.

could be either true upflows, changes of the line profile shapes (line broadening or raised line cores), or downflows from other spectral lines. The observed “blueshifts” are not correlated to the strongest line intensity increases, which would favor a thermal broadening interpretation. Because they are visible in optically thin and optically thick lines, line shape changes are also unlikely. Redshifts from other spectral lines are unlikely because there is no line visible to which the shifts could be attributed. The most likely explanation is therefore that they are of nonthermal origin, for example, upflows or turbulence, which coincide temporally with strong downflows. However, because of their low signal-to-noise ratios, it cannot be determined which spectral line shows the largest blueshifts. In the bottom right panel, there is a line visible at  $x = 260 \text{ km s}^{-1}$ , which belongs to the 3p–3d triplet of Mg II and also sometimes shows emission, generally during the downflow events. The observed downflows are strongly supersonic, as the sound speed ( $v_s$ ) lies below  $50 \text{ km s}^{-1}$ , assuming the adiabatic approximation  $v_s = \sqrt{\gamma RT}$  and a temperature around  $10^4$ – $10^5 \text{ K}$ . There is no time lag for these events between the different spectral lines, at least to the accuracy of the interval of 5 s between consecutive spectra.

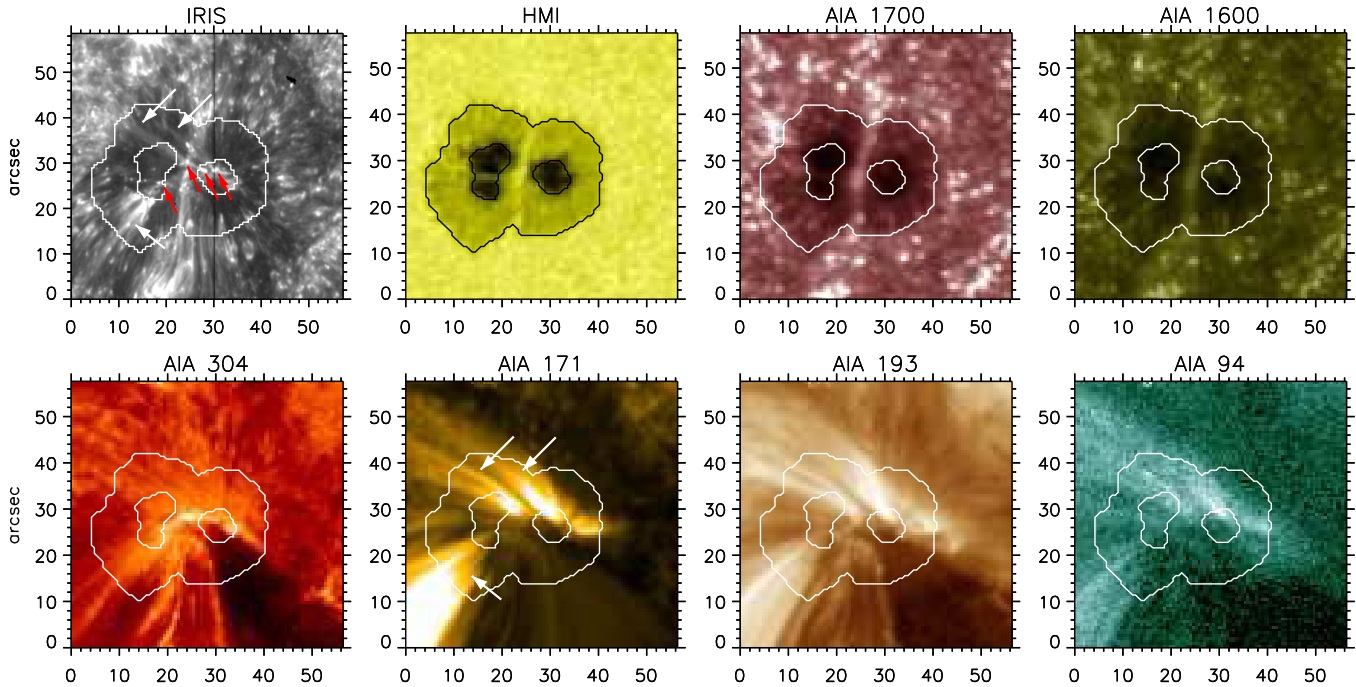
The line profiles change their shapes significantly and on short timescales. Figure 4 shows the evolution of the Mg II and the C II 1336 spectra during 1.5 minutes (top to bottom), which coincided with a bright dot appearing in the SJI. The vertical dotted lines denote  $\pm 150 \text{ km s}^{-1}$  for reference. A sudden increase of intensity with significant downflows (extra peak in all line profiles around  $x = 100 \text{ km s}^{-1}$ ) is visible. The FUV lines generally exhibit more drastic changes in intensity than Mg II.

All these high-velocity events appear as additional shifted line components, meaning that some plasma in the field of view is at rest. Because of the multiple components and strongly variable line profiles, Gaussian fitting has proven too unreliable for these observations.

Figure 5 shows AR 11836 in several *SDO* passbands, ranging from photospheric to coronal temperatures with the IRIS reference image at the top left. Traces of coronal loops can be seen in the IRIS image ending in bright dots in the umbra. The faint IRIS loops correspond to bright loops in AIA 171, 193 and 94, whose intensities vary (see online animation). Apparent flows along these coronal loops into the sunspot can also be observed in these AIA passbands, and especially in the 304 passband, where the loop system appears darker. A decrease in EUV intensity can be caused by absorption of cool material (Anzer & Heinzel 2005; Landi & Reale 2013).

#### 4. DISCUSSION

Visually, the plasma falling along the loops observed with IRIS closely resembles coronal rain. Ground-based observations have found that coronal rain has an average speed of  $60$ – $70 \text{ km s}^{-1}$ , with peaks up to  $140 \text{ km s}^{-1}$ , and varies on timescales of minutes (Antolin & Rouppe van der Voort 2012; Antolin et al. 2012). It is estimated that 7%–30% of the coronal volume exhibits rain, although estimates are difficult mainly because of the low contrast of coronal rain on disk. To our knowledge, this may be the first observation tracing coronal rain into a sunspot’s umbra. One question is why our observed velocities are slightly higher than those reported previously. It



**Figure 5.** IRIS SJI 1400 (top left) and *SDO* images at the same time (15:16 UT on 2013 August 30). Faint loop parts can be seen in the IRIS image, which correspond to bright loops in AIA 171 and 193 (white arrows). The bright dots visible in IRIS images are located at the ends of these loops (small red arrows).

(An animation and a color version of this figure are available online.)

could simply be an effect of different spatial resolutions, or it could be related to the fact that we observe events inside the umbra, where the gas pressure is lower, which may lead to less deceleration. Siphon flows may play a role in the observations, but it is unclear to what extent, especially because the other loop footpoint is not observed. However, the process of coronal rain formation involves flows, which does not exclude siphon flows. Because falling dark blobs can be observed in IRIS and AIA images, coronal rain is very likely the dominating process. Visual tracing of blobs in IRIS data, by creating intensity evolutions along the blob trajectories, reveals much slower speeds (below  $50 \text{ km s}^{-1}$ ) than the IRIS spectra. The ratio of projected to line-of-sight (LOS) velocity components is however similar to that observed for off-limb observations of rain falling almost perpendicularly to the LOS. In that case, the projected component is the faster component. Using Equations (2)–(4) from Antolin et al. (2012) adapted to an on-disk scenario, we can determine that the observed projected velocity of the blobs corresponds to an angle of  $\sim 5$ – $20$  deg above the footpoint with respect to the loop baseline (angle  $\varphi$  in their Figure 12). Our observations also resemble those of Reale et al. (2013), although on a much smaller spatial scale.

#### 4.1. Velocities—Faster than Free Fall?

To investigate the process of energy transport, we calculated the free-fall velocity along elliptical loops according to Antolin & Verwichte (2011). For an assumption of zero initial velocity at the loop top ( $s = 0$ ), the velocity  $v_s$  along the loop can be written as  $v_s(s) = \sqrt{2 \int_0^s g_{\text{sun}} \cos \theta(s') ds'}$ . From AIA images, we determined the loop semilength (half the linear distance between its footpoints,  $a$ ) to be about  $50 \text{ Mm}$ , while its height ( $h$ ) is a free parameter and cannot be determined from the images. The maximum velocities for a blob in such an elliptical loop vary between  $145 \text{ km s}^{-1}$  and  $180 \text{ km s}^{-1}$ , for  $h/a$  ratios of

$0.5$ – $2$ , respectively. Under pure free-fall conditions, we would therefore need initial velocities of  $20$ – $50 \text{ km s}^{-1}$  in order to match the observed values. The required initial velocity may even be higher if some expected deceleration due to collisions with plasma at rest occurs. Flows with such values have been previously observed near the apex of the loops with *Hinode*/Solar Optical Telescope (Ofman & Wang 2008; Antolin et al. 2010).

#### 4.2. Similarity to Flare Ribbons

Thermal instability appears to be the same for post-flare loops and non-flaring active regions (Foukal 1978; Schmieder et al. 1995). The observation on 2013 July 19 showed slightly more activity than 2013 August 30, but there were only microflares, the strongest of which occurred toward the end of the observations while the emission dots were fading (see online animation). Coronal rain was visible in AIA images during the phase of the simple ribbon (before 7.40 UT). Then, a jet-like activity ejected plasma, which can be seen falling back down in AIA 304, additionally to the coronal rain, and which coincides with the time when the ribbon changes shape. A visual resemblance to flare ribbons is striking. They show similar small-scale brightenings (e.g., Kleint 2012) when observed with subarcsecond resolution. This is in agreement with the standard flare model, where particles are accelerated along magnetic field lines into the TR and chromosphere, probably leading to isolated brightenings when the energy between neighboring loops is not equal. The precipitating particles heat the footpoints, leading to evaporation of dense and hot material into coronal loops. As the radiative losses outweigh the heating, a thermal instability may form in post-flare loops, which then may lead to coronal rain falling into the ribbons and possibly contributes to their brightness. Ribbon-like structures suggest a heating correlation between neighboring loops. Such a correlation has also been observed by Antolin & Rouppe van der Voort (2012)

for coronal rain falling into pores, but with smaller correlation lengths of about 2 Mm. Similar correlations are obtained in 2.5 D simulations (Fang et al. 2013), and can be explained by a similar thermodynamic evolution of neighboring loops due to a similar geometry and heating properties. On 2013 July 19, the coronal rain and the falling plasma from the jet may both have contributed to the dynamics of the ribbon, whose emission dots closely resemble those from 2013 August 30.

We verified that no bright dots or unusually high velocities were visible in the photospheric Hinode/SP 6301/6302 raster, taken within an hour of our observations on 2013 August 30. The fact that there were no flares during the IRIS observations may explain why the bright dots were constrained to higher atmospheric layers as the energy transported along the loop was dissipated before reaching the photosphere and it would be interesting to capture and compare an event connected to a flare.

#### 4.3. Local Heating in the TR

Emission dots may either be observed when the supersonic falling plasma undergoes a shock to subsonic speeds (Cargill & Priest 1980) or possibly by collisions of the plasma with the more dense atmosphere (Reale et al. 2013). While the location of the shock front cannot be determined here, it must be lower than the formation height of Mg II, otherwise there would be no supersonic velocities, and higher than that of Fe I 6301/6302, because no unusually high velocities were seen there.

Probably because of the high downflow velocities, there is no observable time lag between the different observed spectral lines that form between  $10^4$  and  $10^5$  K. For a rapidly decreasing temperature due to non-equilibrium, and with the possibility that the loops are composed of different strands responding slightly different to the heating and cooling, it is very likely to obtain multi-temperature structures along the LOS (Reale et al. 2012). However, since they investigated cooling on timescales of minutes, and not seconds as in our case, future modeling efforts should verify that this process may occur on these shorter timescales.

An increase of the local density and temperature is very likely, both in the shock, and the collision scenario. The observation of coronal rain also indicates heating at the loop footpoints, as the current models for coronal rain require a thermal instability. The observed upflow may be explained similarly to “chromospheric” (in this case TR) evaporation: the TR heats faster than radiation can carry the energy away, the temperature increase leads to an increase of pressure and to an upward force, sending plasma back into the corona. It is unclear if these upflows can flow along the same field line as the downflows and one may need to consider the role of partial ionization effects. Small-scale brightenings with similar timescales have been observed in moss (Testa et al. 2013) and near active regions (Regnier et al. 2014). However, the mechanisms seem to be different in those cases because no coronal rain was observed among other differences.

## 5. CONCLUSIONS

We reported small-scale brightenings that appear as bright dots or ribbons in umbrae and penumbrae of sunspots. Spectra of several lines that form at temperatures of  $10^4$ – $10^5$  K show bursts of supersonic Doppler shifts, mostly downflows up to  $200 \text{ km s}^{-1}$ , but also weaker upflows on 2013 August 30. Simultaneous AIA images of coronal passbands reveal these dots to be located at the ends of coronal loops.

The maximum observed velocities probably require an initial velocity at the loop apex, e.g., are faster than free fall. Our comparably high final velocities at the footpoints could be related to the lower gas pressure in sunspots or an unknown acceleration mechanism. Once the downflowing plasma hits more dense atmospheric layers, heating will be caused through collisions or shocks when the speeds go from supersonic to subsonic.

The kinetic energy from the downflowing plasma is probably dissipated partly as local heating in the TR, which may lead to the observed bright dots. The duration of a burst (intensity increase and large Doppler shifts) is about 20 s. The IRIS SJI show blobs of material falling into the sunspot, which may be the first observation tracing coronal rain into an umbra. These observations may contribute to the solution of the coronal energy budget and in the future, it should be investigated how frequent these events are, how much energy is deposited, and through simultaneous observations in photospheric and chromospheric lines, at which layer the energy is deposited. Our observations suggest the presence of heating events in the TR above sunspots, probably leading to catastrophic cooling of loops. The successive brightenings resembling a string of pearls suggest the existence of a strong and rather peculiar correlation in heating for neighboring loops rooted in sunspots. These observations demonstrate the power of IRIS to possibly resolve the fine structure of downflows in the TR and they will help to constrain related modeling efforts in terms of up- and downflow velocities, heating leading to catastrophic cooling, and heating in the low atmosphere due to collisions.

IRIS is a NASA small explorer mission developed and operated by LMSAL with mission operations executed at NASA Ames Research center and major contributions to downlink communications funded by the Norwegian Space Center (NSC, Norway) through an ESA PRODEX contract.

## REFERENCES

- Antiochos, S. K., & Klimchuk, J. A. 1991, *ApJ*, 378, 372  
 Antiochos, S. K., MacNeice, P. J., Spicer, D. S., & Klimchuk, J. A. 1999, *ApJ*, 512, 985  
 Antolin, P., & Rouppe van der Voort, L. 2012, *ApJ*, 745, 152  
 Antolin, P., Shibata, K., & Vissers, G. 2010, *ApJ*, 716, 154  
 Antolin, P., & Verwichte, E. 2011, *ApJ*, 736, 121  
 Antolin, P., Vissers, G., & Rouppe van der Voort, L. 2012, *SoPh*, 280, 457  
 Anzer, U., & Heinzel, P. 2005, *ApJ*, 622, 714  
 Brekke, P., Kjeldseth-Moe, O., & Brueckner, G. E. 1990, *Ap&SS*, 170, 135  
 Brosius, J. W. 2005, *ApJ*, 622, 1216  
 Brosius, J. W., & White, S. M. 2004, *ApJ*, 601, 546  
 Brynildsen, N., Maltby, P., Kjeldseth-Moe, O., & Wilhelm, K. 2004, *ApJ*, 612, 1193  
 Cargill, P. J., & Priest, E. R. 1980, *SoPh*, 65, 251  
 De Pontieu, B., Title, A. M., Lemen, J., et al. 2014, *SoPh*, 289, 2733  
 Dere, K. P. 1982, *SoPh*, 77, 77  
 Fang, X., Xia, C., & Keppens, R. 2013, *ApJL*, 771, L29  
 Field, G. B. 1965, *ApJ*, 142, 531  
 Foukal, P. 1978, *ApJ*, 223, 1046  
 Foukal, P. V., Noyes, R. W., Reeves, E. M., et al. 1974, *ApJL*, 193, L143  
 Goldsmith, D. W. 1971, *SoPh*, 19, 86  
 Gurman, J. B. 1993, *ApJ*, 412, 865  
 Hildner, E. 1974, *SoPh*, 35, 123  
 Karpen, J. T., Antiochos, S. K., Hohensee, M., Klimchuk, J. A., & MacNeice, P. J. 2001, *ApJL*, 553, L85  
 Kawaguchi, I. 1970, *PASJ*, 22, 405  
 Kleint, L. 2012, *ApJ*, 748, 138  
 Lagg, A., Woch, J., Solanki, S. K., & Krupp, N. 2007, *A&A*, 462, 1147  
 Landi, E., & Reale, F. 2013, *ApJ*, 772, 71  
 Lemen, J. R., Title, A. M., Akin, D. J., et al. 2012, *SoPh*, 275, 17  
 Leroy, J.-L. 1972, *SoPh*, 25, 413



- Levine, R. H., & Withbroe, G. L. 1977, *SoPh*, **51**, 83
- Mackay, D. H., & Galsgaard, K. 2001, *SoPh*, **198**, 289
- Müller, D. A. N., Peter, H., & Hansteen, V. H. 2004, *A&A*, **424**, 289
- Nicolas, K. R., Bartoe, J.-D. F., Brueckner, G. E., & Kjeldseth-Moe, O. 1982, *SoPh*, **81**, 253
- Ofman, L., & Wang, T. J. 2008, *A&A*, **482**, L9
- Parker, E. N. 1953, *ApJ*, **117**, 431
- Reale, F., Landi, E., & Orlando, S. 2012, *ApJ*, **746**, 18
- Reale, F., Orlando, S., Testa, P., et al. 2013, *Sci*, **341**, 251
- Regnier, S., Alexander, C. E., Walsh, R. W., et al. 2014, *ApJ*, **784**, 134
- Schmidt, W., Muglach, K., & Knölker, M. 2000, *ApJ*, **544**, 567
- Schmieder, B., Heinzel, P., Wiik, J. E., et al. 1995, *SoPh*, **156**, 337
- Testa, P., De Pontieu, B., Martínez-Sykora, J., et al. 2013, *ApJL*, **770**, L1
- Tian, H., Curdt, W., Teriaca, L., Landi, E., & Marsch, E. 2009, *A&A*, **505**, 307
- Tian, H., DeLuca, E., Reeves, K. K., et al. 2014, *ApJ*, **786**, 137