

University of Dayton eCommons

Proceedings: Global Voices on the University of
Dayton Campus

Alumni Chair in the Humanities

1-2018

My Formative Years

Tiffany Taylor Smith

University of Dayton, ttaylor-smith1@udayton.edu

Follow this and additional works at: https://ecommons.udayton.edu/global_voices

 Part of the [Arts and Humanities Commons](#), [Higher Education Commons](#), and the [International and Comparative Education Commons](#)

eCommons Citation

Smith, Tiffany Taylor, "My Formative Years" (2018). *Proceedings: Global Voices on the University of Dayton Campus*. 26.
https://ecommons.udayton.edu/global_voices/26

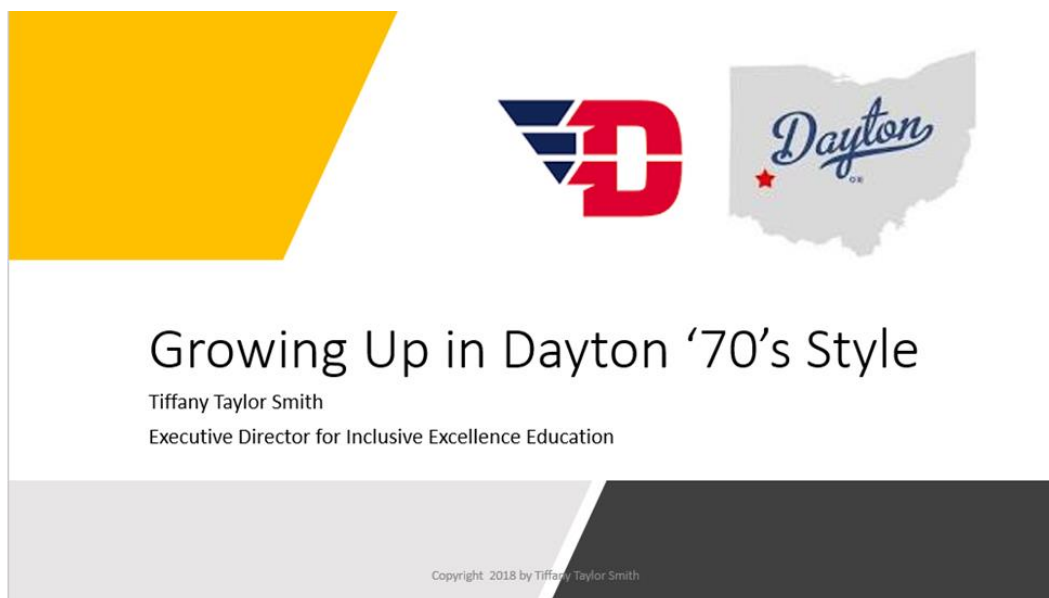
This Chapter 4: Globalization on UD's Campus is brought to you for free and open access by the Alumni Chair in the Humanities at eCommons. It has been accepted for inclusion in Proceedings: Global Voices on the University of Dayton Campus by an authorized administrator of eCommons. For more information, please contact frice1@udayton.edu, mschlangen1@udayton.edu.

II. My Formative Years

Tiffany Taylor Smith, Executive Director, Office of Diversity and Inclusion

Tiffany Taylor Smith’s slides trace her growing up in Dayton, showing how her experience shaped her professional life in later years. Her neighborhood in Dayton was vibrant and forward-looking. She credits her parents and siblings for the wonderful early years, and by the time she went to graduate school in New York, her fundamental values about what it means to be human had been formed. She is passionate about creating a diverse and inclusive community for all.

Presentation Slides



Sharing Our Truth: Tiffany



Copyright 2018 by Tiffany Taylor Smith

My Dayton Neighborhood in the 70's



Copyright 2018 by Tiffany Taylor Smith

Exposure, Exposure



Copyright 2018 by Tiffany Taylor Smith

Middle Class, African-American Family



Copyright 2018 by Tiffany Taylor Smith



Copyright 2018 by Tiffany Taylor Smith

Schooling

- ❑ Dayton Public Schools from k-8
- ❑ Chaminade-Julienne Freshman-Sophomore
- ❑ Archbishop Alter Junior-Senior
- ❑ University of Rochester BA Psychology
- ❑ Fordham University M.S. Ed.

Copyright 2018 by Tiffany Taylor Smith

Cultivation of an *Inclusive* campus environment

Inclusive campuses –
classrooms, spaces of living and working –

are campuses in which *faculty, staff and students*
work together to create and sustain an environment
in which everyone **feels safe, supported, and
encouraged to express** their views and concerns.

(Center for Research on Learning and Teaching, University of Michigan)

Copyright 2018 by Tiffany Taylor Smith

Increasing Inclusive Community

Opportunity to learn from others
Willingness, motivation to expand cultural knowledge
Easy to avoid difference and new experiences
Courageous, vulnerable and curious
Challenge perceptions, bias & stereotypes
Learning to be comfortable with discomfort



Copyright 2018 by Tiffany Taylor Smith