

THE CATHOLIC PARTNERSHIP SCHOOLS

My
Future
Is Not Yet Written.



THE CATHOLIC PARTNERSHIP SCHOOLS POST PAROCHIAL MODEL



THE CATHOLIC PARTNERSHIP SCHOOLS

New Jersey

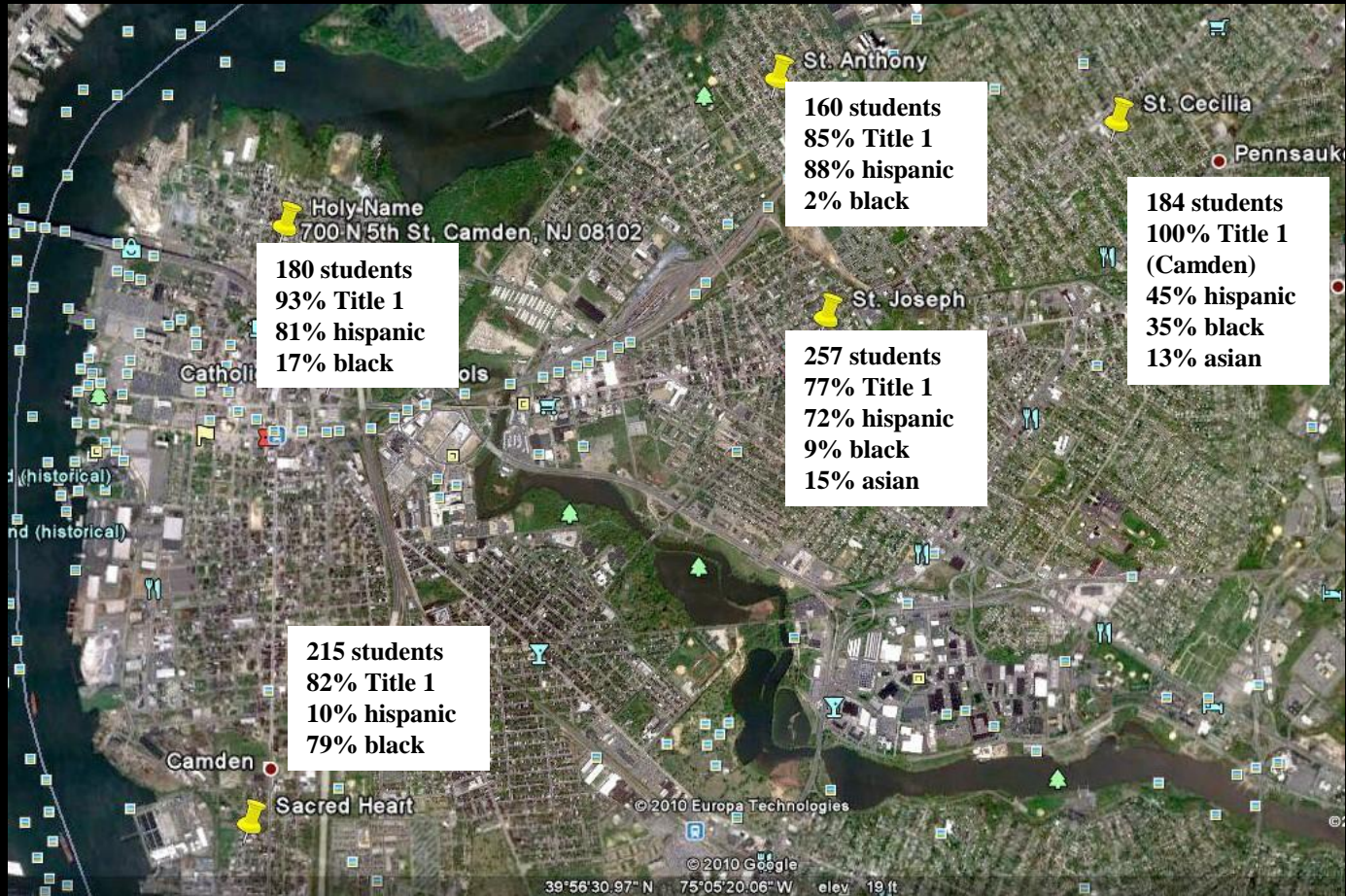


CAMDEN the City

8 square miles
80,000 people

26 District
8 Charter (+6)
3 Christian
5 Catholic

THE CATHOLIC PARTNERSHIP SCHOOLS



THE CATHOLIC PARTNERSHIP SCHOOLS

- ~1000 children
- ~ 60% Hispanic
- ~30% African American
- 40% Catholic
- 88% eligible for Free/Reduced



44% of the residents live in poverty
The median household income is \$23K per yr

PAUSE



WHAT MATTERS?

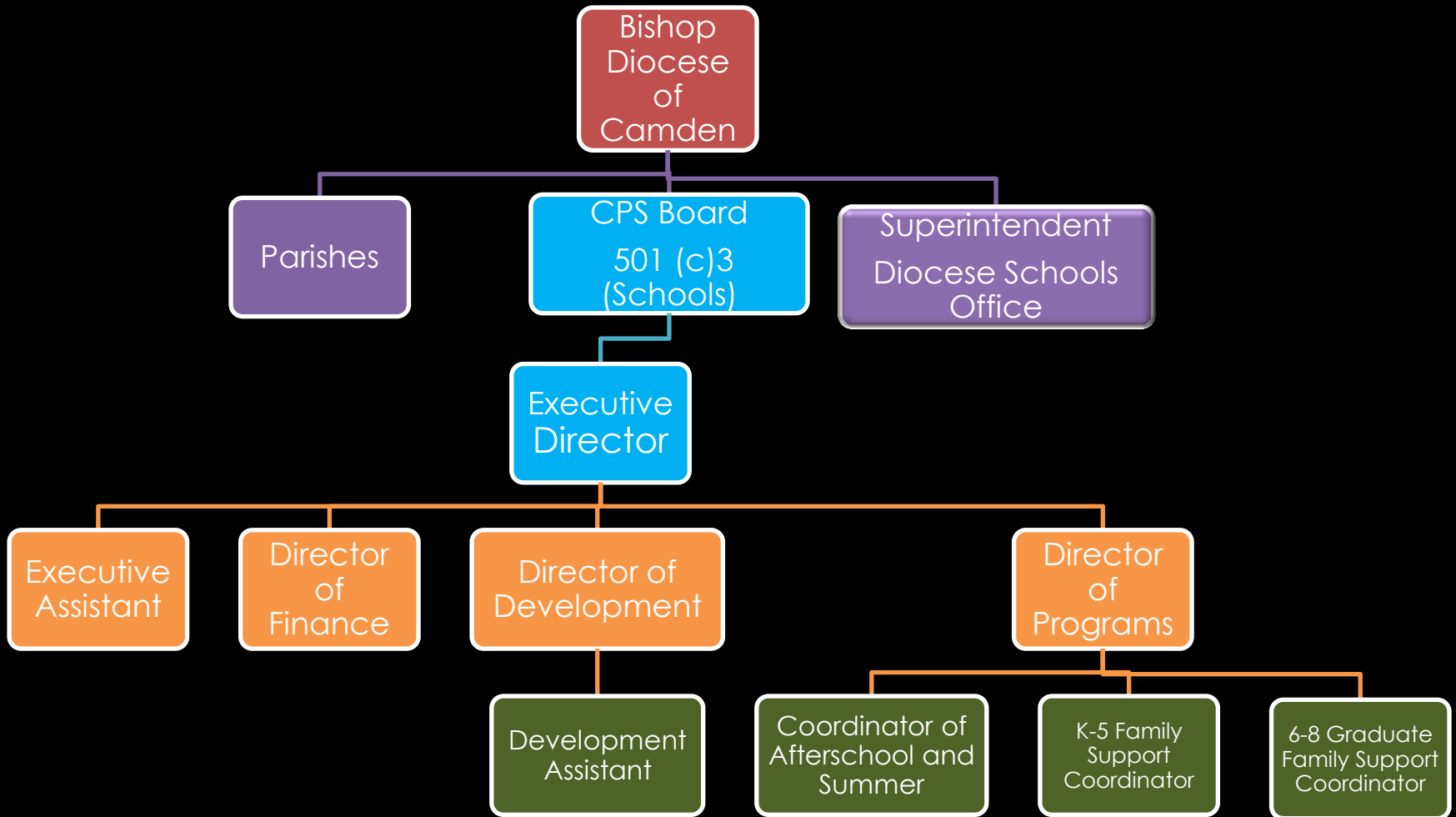
- Quality
- Scale
- Innovative Policies
- Advocacy
- Faith

THE CATHOLIC PARTNERSHIP MISSION



defined by **faith**
rooted in respect
committed to **excellence**
compelled by justice
rigorous **college preparatory** and secondary

CPS TEAM



THE CATHOLIC PARTNERSHIP SCHOOLS

ESTABLISHING AN IDENTITY

- mission
- beliefs
- name
- logo
- website
- emails



CATHOLIC
Partnership Schools
Educating Camden's Children

Holy Name School
Sacred Heart School
Saint Anthony of Padua School
Saint Cecilia School
Saint Joseph Pro-Cathedral School

DATA DRIVEN



NWEA™

Northwest Evaluation Association

Partnering to help all kids learn



 teachscape

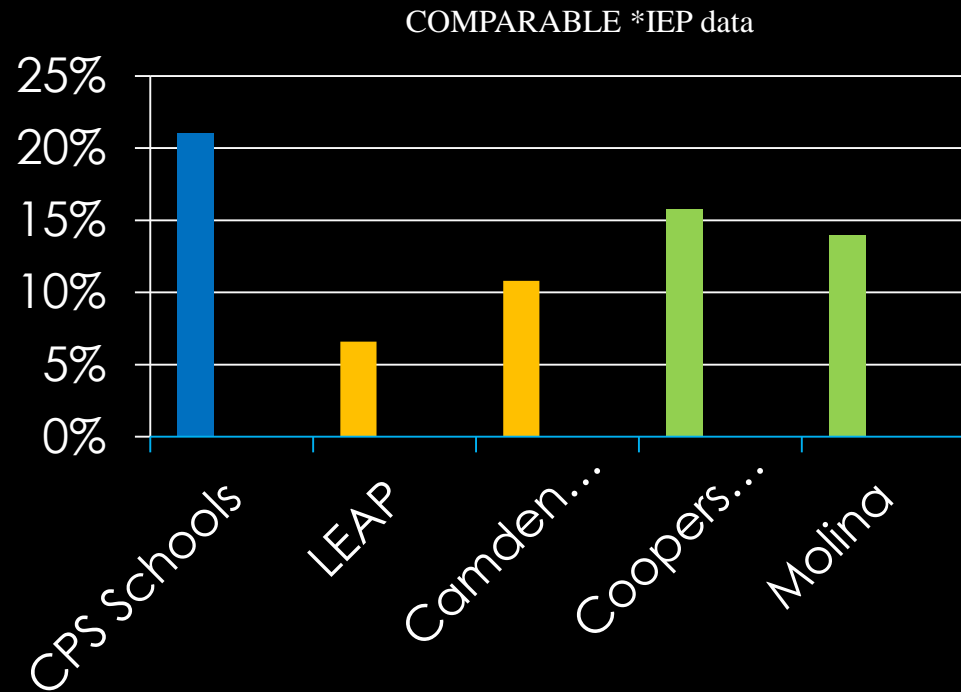
GOOD TO GREAT



- **Middle States Accredited**
- **CPS Instructional Coach**
- **Shared Reading Specialist**
- **Children's Literacy Initiative**
 - **All (5) schools K-3 24 teachers included and one model classroom per school**

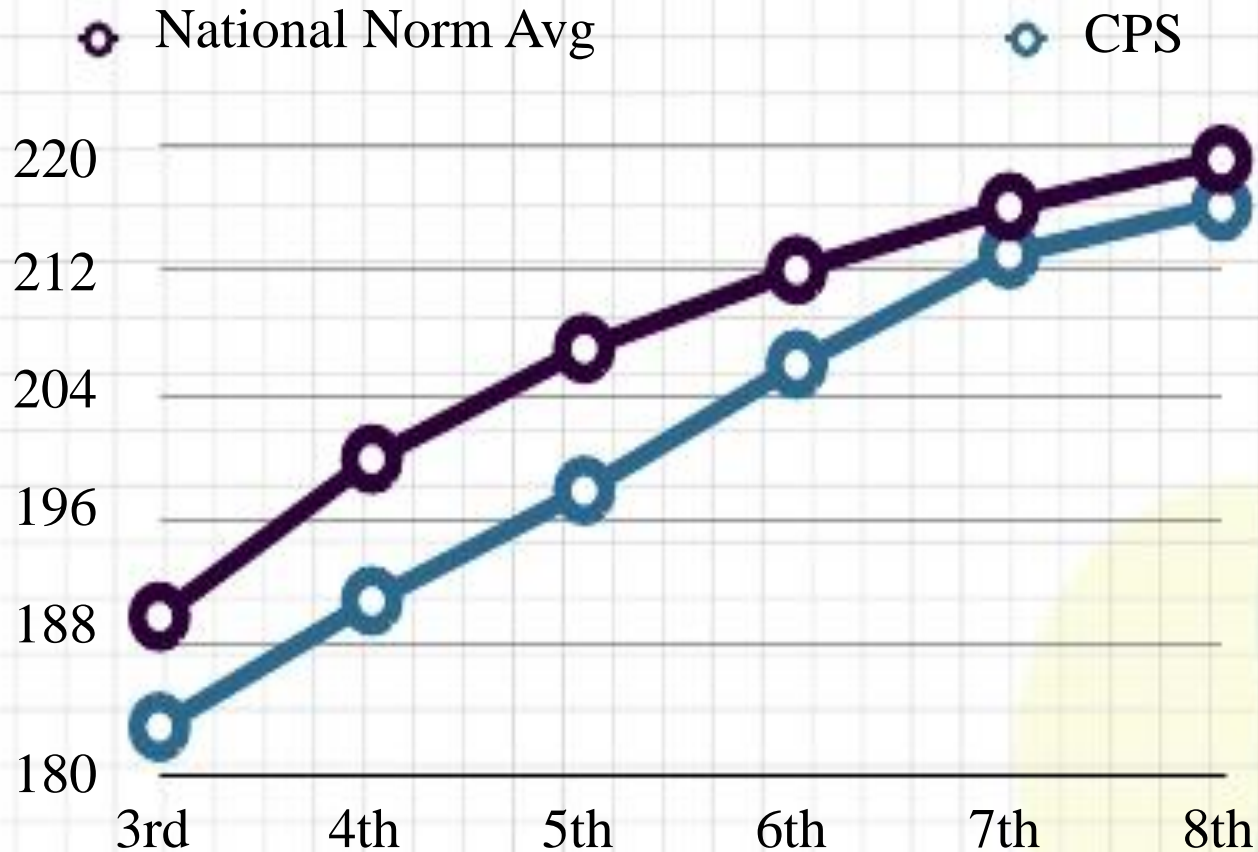
THE CATHOLIC PARTNERSHIP SCHOOLS

CPS Students classified with ISP's



CLOSING THE ACHIEVEMENT GAP - **READING**

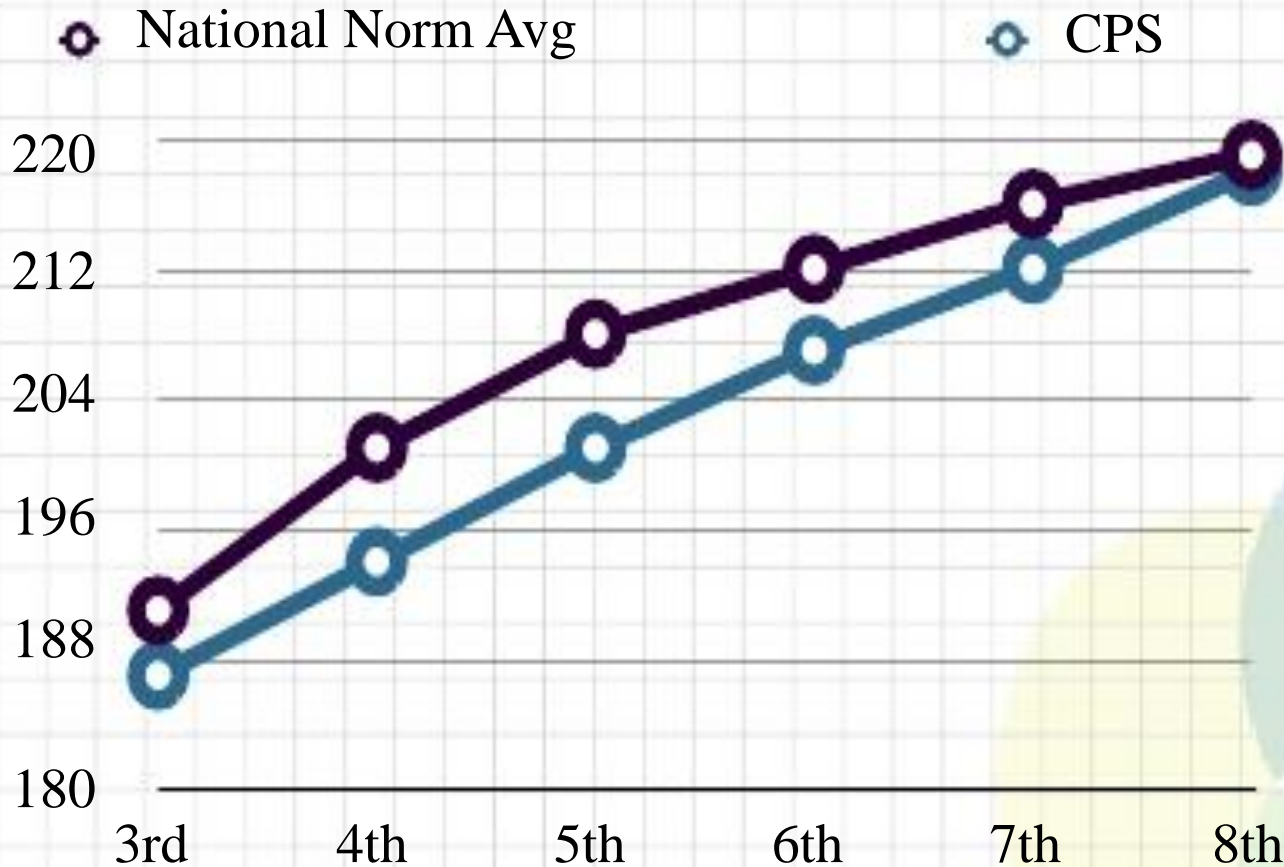
FALL 2012 MAP SCORES



The NWEA is a MAP test that compares CPS students to tens of thousands of students from across the country representing a cross section of American students and providing a national reference point.

CLOSING THE ACHIEVEMENT GAP - LANGUAGE ARTS

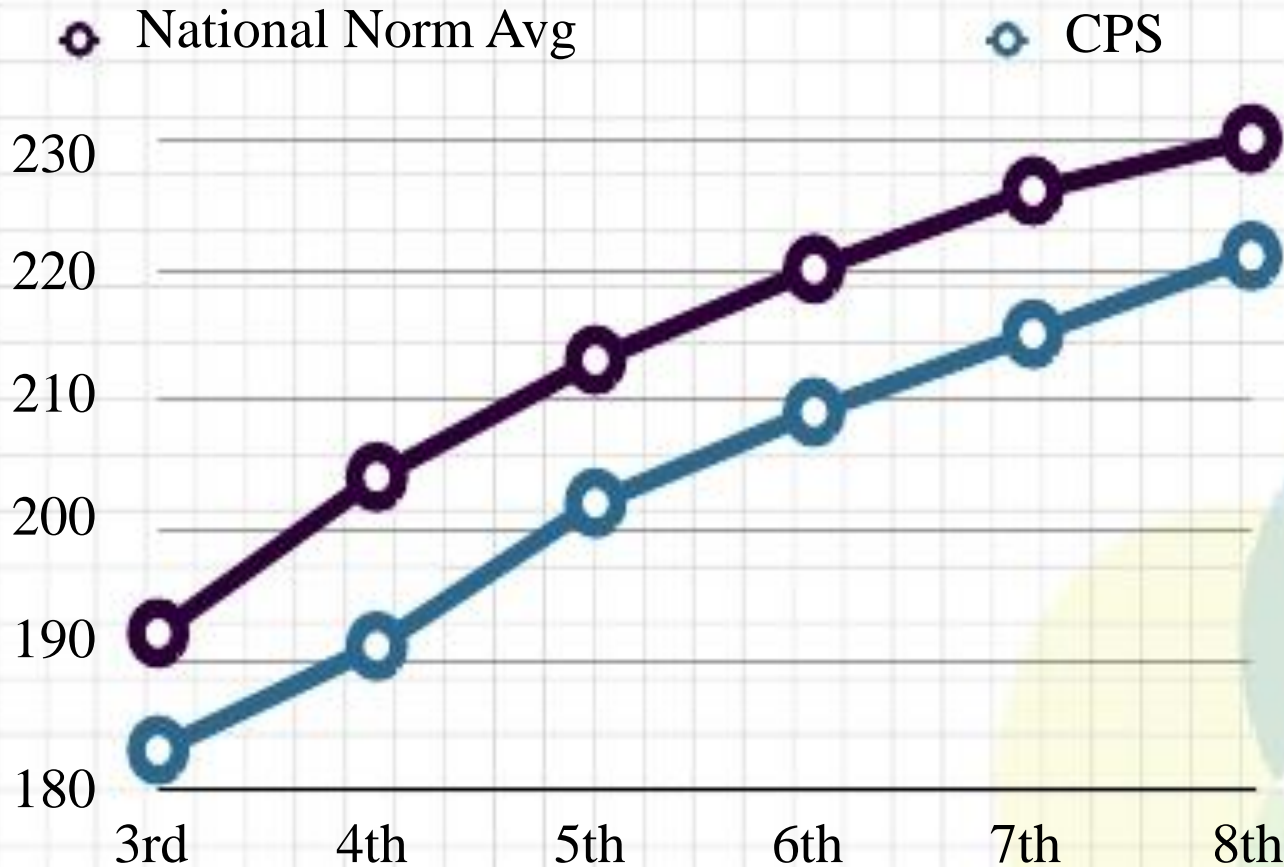
FALL 2012 MAP SCORES



The NWEA is a MAP test that compares CPS students to tens of thousands of students from across the country representing a cross section of American students and providing a national reference point.

CLOSING THE ACHIEVEMENT GAP - MATH

FALL 2012 MAP SCORES



The NWEA is a MAP test that compares CPS students to tens of thousands of students from across the country representing a cross section of American students and providing a national reference point.

CLOSING THE ACHIEVEMENT GAP

New York University (1)
Holy Cross College (1)
Rutgers University (8)
Widner University (1)
Camden County (5)
Cedar Crest College
Monmouth College
College of New Jersey
Philadelphia University
Chestnut Hill College
Rosemont College
Farleigh Dickinson
Rowan University
Holy Family University
St. John's University
Iona College
St. Joseph University
LaSalle University
Seton Hall University

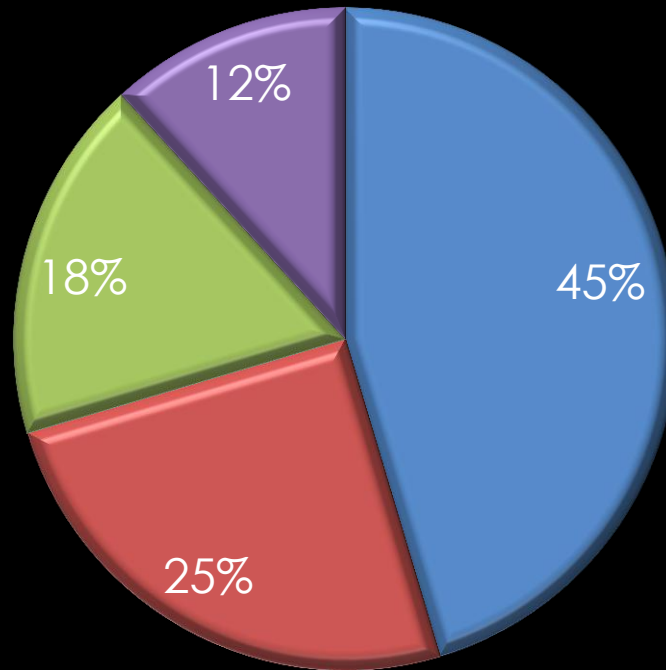


*Class of 2012: CCHS 16 Seniors

REVENUE 2012/13

4 Schools and Shared Services for 5

Total Budget \$5,500,000



■ Fundraise	\$2.5M
■ Diocese	\$1.38M
■ Tuition	\$980K
■ Program	\$650K

ADVOCACY



WE CAN DO BETTER FOR KIDS

THE CATHOLIC PARTNERSHIP SCHOOLS

My
Future
Is Not Yet Written.

