


1927

## The Gateway 1927

University of Omaha

Follow this and additional works at: <https://digitalcommons.unomaha.edu/yearbooks>

 Part of the [Higher Education Commons](#), and the [Organizational Communication Commons](#)

---

### Recommended Citation

University of Omaha, "The Gateway 1927" (1927). *Yearbooks*. 17.  
<https://digitalcommons.unomaha.edu/yearbooks/17>

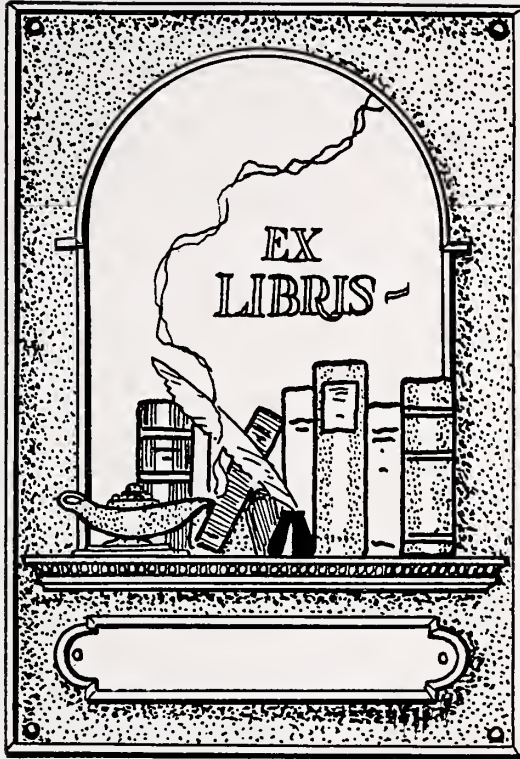
This Book is brought to you for free and open access by the Archives & Special Collections at DigitalCommons@UNO. It has been accepted for inclusion in Yearbooks by an authorized administrator of DigitalCommons@UNO. For more information, please contact [unodigitalcommons@unomaha.edu](mailto:unodigitalcommons@unomaha.edu).



**THE  
GATEWAY  
1927**











Digitized by the Internet Archive  
in 2015

<https://archive.org/details/gateway1927univ>



*The*  
**GATEWAY ANNUAL**

UNIVERSITY OF OMAHA



VOLUME XV, 1927



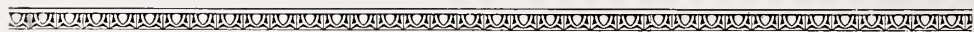


H. W. SCHLEH

*Editor-in-Chief*

F. A. NELSON

*Business Manager*





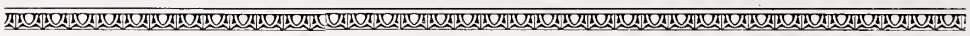
## TABLE OF CONTENTS

Dedication	- - - - -	Page 7
Administration	- - - - -	Page 9
Colleges of Law and Commerce	- - - - -	Page 19
Graduates	- - - - -	Page 23
Juniors	- - - - -	Page 31
Undergraduates	- - - - -	Page 39
Publications	- - - - -	Page 45
Athletics	- - - - -	Page 51
Gala Day	- - - - -	Page 61
Assembly	- - - - -	Page 64
Organizations	- - - - -	Page 65
Greeks	- - - - -	Page 79
Memories	- - - - -	Page 91





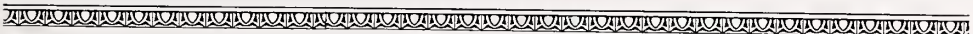
WM. L. SHEARER, M. D., D. D. S.



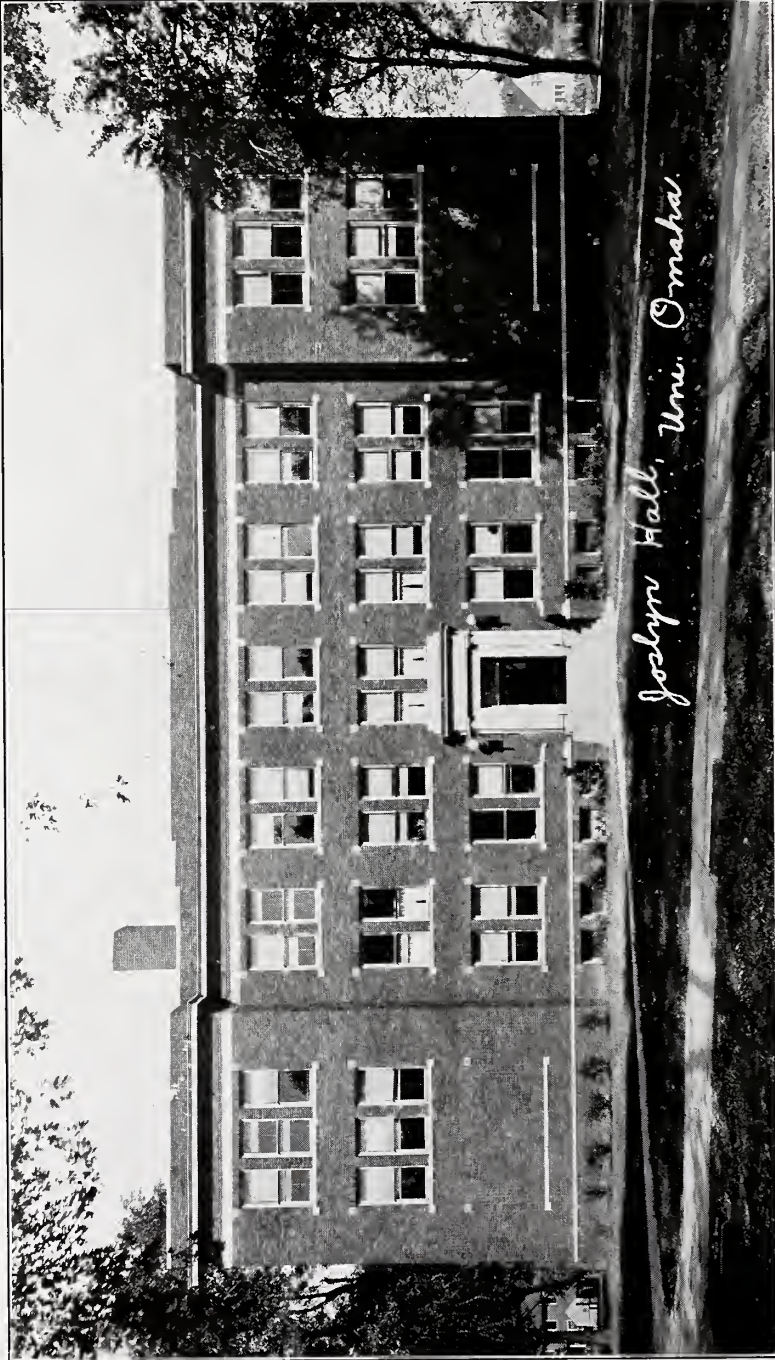


## DEDICATION

*To Dr. William L. Shearer, who is a member of the Board of Trustees of the University, President of the Alumni Association, and whose phenomenal success is the pride and inspiration of all students, this volume is affectionately dedicated, in appreciation of his generous devotion of his means, his services, and his loyalty.*

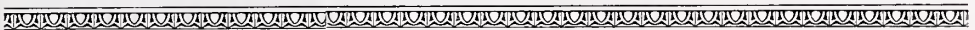




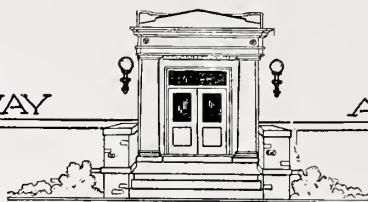


*Joslyn Hall, Uni. Omaha.*

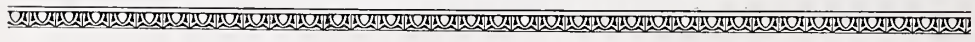
JOSLYN HALL







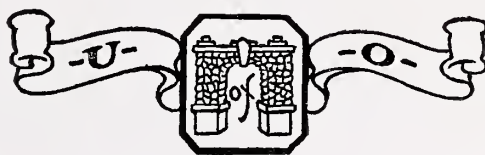
D. E. JENKINS  
President, University of Omaha

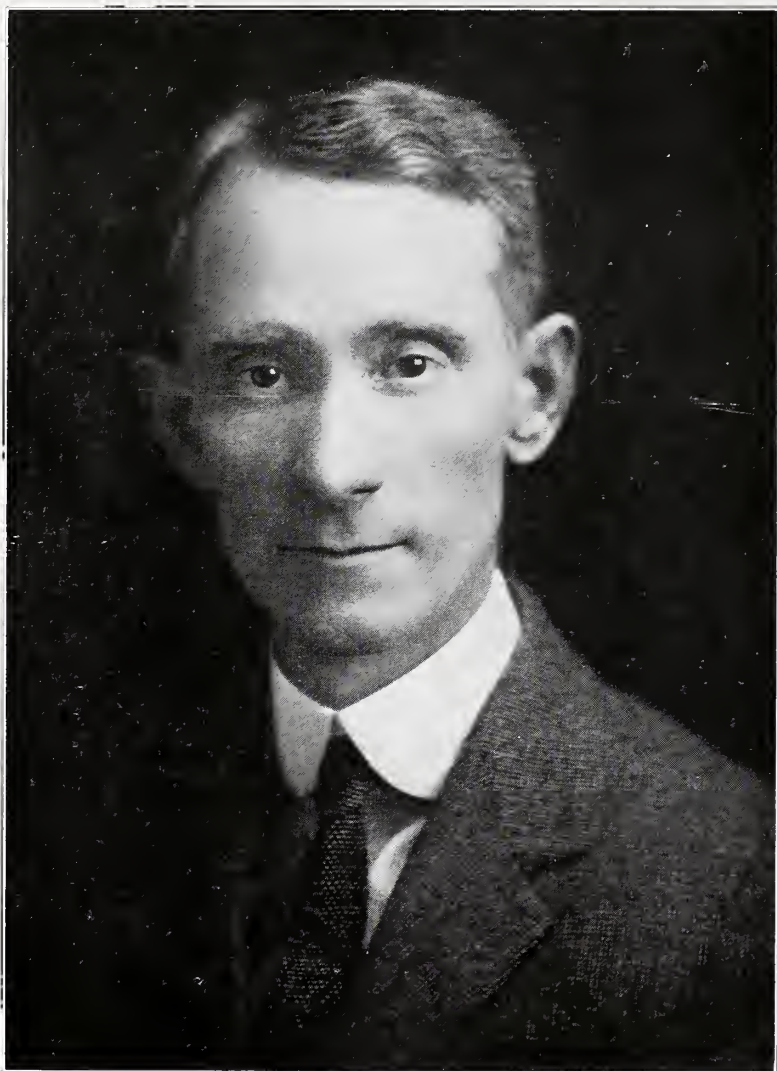




## BOARD OF TRUSTEES

W. F. Baxter	N. P. Dodge
C. W. Black	A. A. Lamoreaux
Dr. W. F. Callfas	Arthur Palmer
M. B. Copeland	Dr. H. M. McClanahan
J. E. Davidson	Dr. J. P. Lord
R. A. McEachron	W. T. Graham
D. W. Merrow	Hugh Myers
A. N. Eaton	C. Louis Meyer
Dr. Palmer Findley	Dr. W. L. Shearer
Judge Howard Kennedy	A. C. Thomsen
Dr. A. F. Jonas	Dr. J. H. Vance
Mrs. A. F. Jonas	C. Vincent
Mrs. Sarah Joslyn	Mrs. C. Vincent
Henry Kieser	Alice R. Ware





W. GILBERT JAMES

Dean





## A FEW WORDS ON A PASSING YEAR

**T**HE year 1926-1927 has been an unusual year in the history of the University of Omaha. The School opened in September in a most auspicious manner. Only a few days had passed when it became apparent that the largest student body in the history of the institution had enrolled for the year's work. This was due not only to the large number of Freshmen who entered as regular students, but, also, to the increased number of upper classmen who continued to identify themselves with the life and interests of the institution.

Shortly after the opening of the semester an appalling gloom fell upon the year's bright prospects. It fell upon students and faculty alike. Our beloved president, Dr. D. E. Jenkins, was stricken in the midst of his labors. Each week, for a time, we anticipated his return to us. But as weeks went by it became evident that a complete rest from responsibility was necessary for his recovery.

Much praise must be granted to the Y. M. C. A. and the Y. W. C. A. in connection with the student life of the institution. These organizations have rendered high service in promoting a moral and a spiritual growth and in sustaining a sense of common interest and co-operation which is so essential to the welfare of the institution.

In the sphere of Athletics the University has made a good record. Perhaps, in the field of football we were the least successful. This was accounted for by the amount of new material which was necessary in the absence of old letter men. But withal, the team played the game and in spite of handicaps and losses brought considerable favor to its Alma Mater.

Like football, the basketball teams were handicapped by much new material. But, unlike football, these teams were able by the middle of the season to play a good brand of ball, and finally completed the schedule having won a majority of the games.

Debate and Oratory have been equally successful during the past year. It is noteworthy that the University for the first time in its history competed with such schools as Northwestern University and the University of Wyoming.

In concluding the retrospect of the year, it is fitting and just to commend the students for their loyalty and co-operation and to congratulate the athletic and debating teams for their successes, and, at the same time praise them for their wonderful spirit exemplified at times in defeat. Likewise, unstinted commendation must be given to the coaches for their untiring service in each line of endeavor.

W. GILBERT JAMES, *Dean.*





**V. H. VARTANIAN**

Bible, Social Science

**ANNA JENKINS**

Home Economics

**M. H. SUBLETTE**

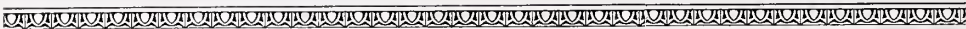
Economics

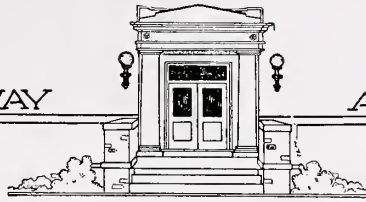
**FRANCES K. GOULD**

English, Rhetoric

**F. H. RIDGLEY**

Greek





**NELL WARD**

Chemistry

**T. EARL SULLENGER**

Social Science

**PEARL L. WEBER**

Psychology, Philosophy

**F. K. GUILFOIL**

Journalism, Rhetoric, Debate

**GRACE WINTERS**

Biology, Botany





**JULIUS F. SCHWARZ**

Executive Secretary

**HERMA ZENTMYER**

Secretary to President

**MRS. LESLIE JOHNSON**

Rhetoric

**AUGUSTA KNIGHT**

Fine Arts

**INEZ CHESNUT**

Librarian





**ELIZABETH G. BARNES**  
Registrar

**HILMA PETERSON**  
Mathematics

**M. M. MAYA**  
Spanish, Italian

**FREDA NELSON**  
Secretary, College of Commerce

**A. J. DUNLAP**  
Director, College of Commerce







**GEORGE P. BORGLUM**

French, Education

**L. M. BRADFIELD**

Coach, History, Psychology

**JOSEPH ROSEN**

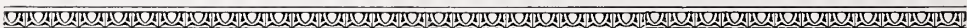
Mathematics, Physics

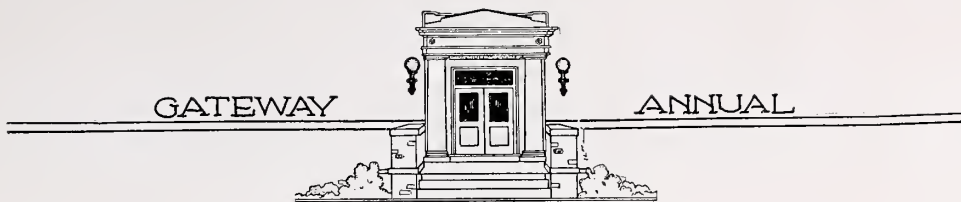
**MRS. L. D. CRENSHAW**

Instructor of Stenography

**L. D. CRENSHAW**

Principal of Instruction, College of Commerce





**COLLEGES *of***  
**LAW *and* COMMERCE**





## SCHOOL OF LAW

### FACULTY

DANIEL E. JENKINS, M. A., Ph., D. D.  
President of University of Omaha

ALEXANDER C. TROUP, A. B., LL. B.  
Judge of District Court, Fourth District, Nebraska  
Dean of Law Faculty

ARTHUR C. THOMSEN, LL. B.  
Secretary of Law College

WILLIAM M. BURTON  
Georgetown University

THOMAS B. DYSART  
Michigan University

CHARLES E. FOSTER  
University of Nebraska

CHARLES W. HALLER  
University of Iowa

LEONARD A. HAMMES  
University of Chicago

W. G. HASTINGS  
Former Dean Nebraska University Law  
School  
Judge District Court, Fourth District

FRED N. HELLNER  
Columbia University

HARLAND L. MOSSMAN  
Morningside College

ROBERT D. NEELY  
Northwestern University

GEORGE PRATT  
Northwestern University

GEORGE ROGERS  
University of Nebraska

HOWARD SAXTON  
George Washington University

JUDGE WILLARD SLABAUGH  
Hiram College, Ohio

HARRY SHACKLEFORD  
Creighton University

LESTER SLONECKER  
University of Nebraska

HORACE S. STANDEVEN  
University of Omaha

JUDGE CARROLL O. STAUFFER  
University of Nebraska

JAMES M. STURDEVANT  
University of Omaha

\* JUDGE ABRAHAM L. SUTTON  
University of Omaha

DAVID SWARR  
University of Nebraska

AMOS THOMAS  
University of Nebraska

ARTHUR C. THOMSEN  
University of Omaha

RALPH A. VAN ORSDEL  
University of Nebraska

JOHN W. YEAGER  
Kent College of Law

### SPECIAL LECTURERS

MR. ARTHUR H. STURGES, Patent Law  
CAPTAIN BURRITT H. HINMAN, Assistant Judge Advocate, Seventh Corps  
Area, Courts Martial

DR. HARRISON WIGTON, Psychiatrist, Medical Jurisprudence

\* Deceased



## THE NIGHT LAW SCHOOL

### GENERAL STATEMENT

**T**HE Law Department of the University of Omaha has been in existence as such twelve years. It was formerly the Omaha School of Law, a night school, which had been in successful operation for more than thirty years. Many prominent Omaha and Nebraska attorneys, and at least one District Judge, were graduated from this school.

The Law Department is a night school. It presents an opportunity to those men who cannot afford to attend day classes to obtain a practical and thorough law education.

The instructors are capable, practicing lawyers or judges at the Omaha bar, and mostly specialize in the subjects which they teach. These active practitioners impart a practical understanding of the studies through their own experience, and in a very special way add interest to the work.

Every effort has been made to so thoroughly train the student that from the beginning of his practice as a lawyer he shall command the respect of his associates; and to this end the student is required as part of the law course, to take two years of argumentation and public speaking, one year of logic and three years of briefing and brief making. Though the school-year ends for regular work about June 15th, the school is open throughout the summer, and during that time evening elective courses in the use of law books and brief writing are conducted.

The Moot Court, conducted on Saturday nights at the University Administration building, Twenty-fourth and Pratt streets, is novel but characteristically practical. Postal notices sent at frequent intervals to families living in that vicinity bring an interested audience of from fifty to one hundred persons, from which a jury of twelve is selected. One of the judges of our District Court presides. The astonishingly serious endeavors of the trial student-lawyer demonstrates the practical worth of an actual jury and genuine court in these Moot cases—and furnishes a cheering omen for the return of the old-time, highly-esteemed and respected advocate.

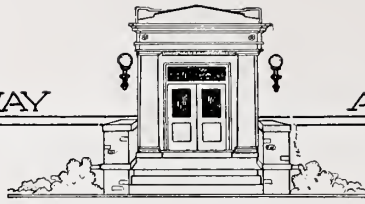
The design of the School is to prepare students for the practice of law in any court of the States of the Union, particular attention being given to the practice of the courts of Nebraska.

The School issues a legal bulletin biennially, which is sent free of charge to all universities and all Nebraska lawyers, and those in southern South Dakota, western Iowa and northern Kansas.

We have a library of 3,000 law books, and the Bulletin is favorably commented on by such schools as Harvard and Cornell.







## COLLEGE OF COMMERCE

1307 Farnam Street

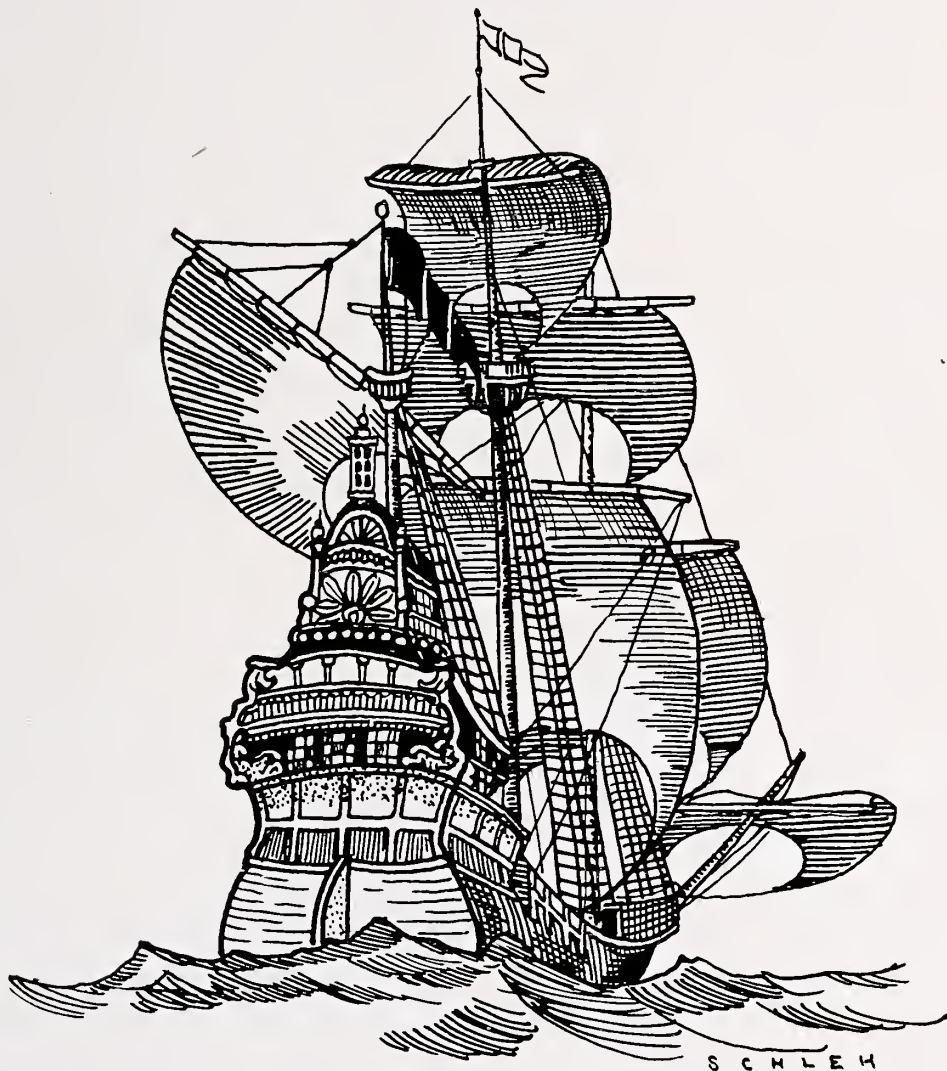
**S**INCE its organization, the University has steadily, year by year, extended the range of its educational activities until now it includes a College of Commerce. It is only recently that standard universities have felt the necessity of providing this branch of educational training.

The College of Commerce of the University of Omaha was organized to give educational service to those who seek either a short business course or a degree in Commercial Science. The subjects offered cover the field of commerce and are given in a thorough, practical way, under University regulations, with University credit for properly matriculated students.

To properly function as a technical, educational institution, two objectives must be kept in mind: First, to supply the necessary technical training and practice for a successful life of service in the commercial world; and, second, to assist the students in securing employment. The College of Commerce courses include specialized training for stenographers, secretaries, bookkeepers, accountants, auditors, business executives, and all kinds of other office help which are required to carry on the complex commercial activities of the world.

GATEWAY

ANNUAL



# GRADUATES





## THE CLASS OF 1927

OUR ship has at last come into port, and we are about to take the step which will put us on life's rocky road. The voyage has been one replete with pleasure, and one which will always furnish only the happiest and most treasured memories.

We have stayed together for four long years, and we have seen some of our number drop out from year to year, but the spirit which fired us as Freshmen has not lessened, nor shall it lessen as years come and go.

Others may have gone to larger schools, and have been in larger classes, but what does that matter to us? Here in our Alma Mater we have learned, toiled, and played, each in turn, and we are proud of our school, proud of our class, and proud of the achievements which are ours.

Now we have come to the parting of the ways. Some will go here, others yonder, so as we work in our chosen fields, let us pause from time to time and give thought to the days that were, and to our University.





### HELEN HOOVER, B. A.

Kappa Psi Delta, President, 4; Alpha Kappa Delta, 4; Treasurer, 4; Tennis Championship, 1, 2, 3; Mixed Doubles Championship, 1, 2; Junior Class, Vice-President, 3; French club, 4.

### CARL O. W. STROMBERG, B. A.

Mystic Thirteen, 1, 2, 3; Cheer Leader, 1, 2, 3, 4; Class Sergeant-at-Arms, 1, 2, 3; Y. M. C. A., Cabinet, 1, 2, 3, 4; Glee club, 1, 2, 3, 4; Librarian, 2; Vice-President, 3; Weekly Gateway Staff, 1, 2; Circulation Manager, 1; Business Manager, 2; Charter Member, Unoma Debating society, 1; Basket Ball Squad, 2; Pan-Hellenic Council, 2; Spanish club, 3, 4; Student Assembly Committee, 2, 3, 4; Chairman, 4; Football Squad, 4; Religious Education Assistant, 4; Board of Control, 4; Chairman, 4; Student Council, 4; President, 4; "O" club, 4; Alpha Sigma Lambda.

### MILDRED E. ANDREWS, B. A.

Alpha Kappa Delta; Secretary, 4; Y. W. C. A., 2, 3, 4; Cabinet, 4; Student Council, 3; Los Sabios, 2, 3; Chapel Representative, 2, 3; Campus League of Women Voters, President, 4; Secretary, Senior Class; Baccalaureate Committee, 4; Sociology Assistant, 3, 4.

### F. KENNETH GATES, B. A.

Theta Phi Delta, Secretary, 2; Vice-President, 3; Phi Chi; Student Council, President, 3; President, 2; Pan Hellenic Council, President, 3; Thirteen, 1, 2, 3; Los Sabios, 1, 2, 3; Biology Club, 1, 2; German Club, 3; Chairman, Sneak Day, 2; Y. M. C. A., 1, 2, 3; Secretary, Treasurer, 2; Chairman Student Chapel Committee, 2.

### HERMA ZENTMYER, B. A.







**GERTRUDE M. JONES, B. A.**

Kappa Psi Delta, President, 3; Alpha Kappa Delta, 4; Freshman Maid; Y. W. C. A., 1, 2, 4; Cabinet, 4; Gala Day Committee, 2; Spanish club, 2, 3; Associate Editor of Annual, 3; Paint Pot club, 4; Thirteen, 3; May Queen, 4.

**CLEO BESS THORNTON, B. A.**

Gateway Staff, 2, 3; Alpha Kappa Delta, 4; Pi Omega Pi, President, 3; Biology club, 2.

**HELEN KREYMBORG, B. A.**

Kappa Psi Delta, Secretary, 3, Vice-President, 4; Alpha Kappa Delta; French club, 4; Spanish club, 4; Gala Day, 3, 4; Pan-Hellenic Council, 3; Y. W. C. A., 1.

**THELMA MARKS, B. A.**

Sigma Chi Omicron, Vice-President, 4, Secretary, 3, Treasurer, 2; Alpha Kappa Delta; Spanish club, 3; Y. W. C. A., 1, 4; Central Gala Day Committee, Freshman Representative; Pan-Hellenic Representative; Announcement Committee; Gala Day, 1, 3; Annual Staff, 3.

**MRS. IRENE BOSHLER YOUNG, B. A.**





**MARY E. BOYLAND, B. A.**

W. A. Executive Board, 3; Y. W. C. A., 1, 2, 3;  
Girls' Basket Ball, 2, 3; Biology club, 1, 2;  
French club, 1, 2, 3.

**THEODORE DRDLA, B. S.**

Basketball, 1, 2; Football, 2; Staff Weekly, 1,  
2; Annual Staff, 2; Biology club, 1, 2; Spanish  
club, 1, 2; Glee club, 1, 2; Y. M. C. A., 1, 2;  
Alpha Sigma Lambda.

**JUANITA PETERSON, B. A.**

Spanish club, 3, 4; Glee club, 3, 4; Honor Roll  
Scholarship, 4.

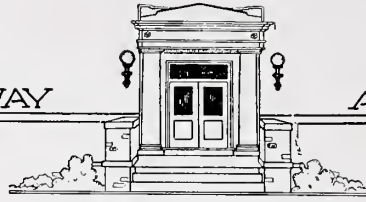
**RUTH C. BETTS, B. A.**

Kappa Psi Delta; Alpha Kappa Delta; Dramatic  
club, 1, 2, 3, 4; Student Council, 4; Gala Day,  
1, 2, 3, 4; Varsity Varieties, 3, 4; "Rival Ghost,"  
4; "Sawdust Queen," 3; "Wedding Bells," 1;  
Y. W. C. A., 1, 2, 3, 4, Secretary, 3; Gala Day  
Committee, 4.

**HOMER W. SHLEH, B. A.**

Theta Phi Delta, President, 4; Annual Staff, 1,  
2, 3, 4, Editor, 2, 4; Weekly Gateway, 1, 2, 3, 4;  
Pan-Hellenic Council, President, 4; Thirteen, 2,  
3; Glee club, 2, 3, 4; Librarian, 4; Treasurer,  
Freshman Class; Treasurer, Junior Class; Treas-  
urer, Senior Class; Gala Day, 1, 3, 4; Varsity  
Varieties, 3, 4, Manager, 4; Tennis, 2, 3, 4;  
Runner-up Men's Doubles, 3; Runner-up Men's  
Singles, 4; Football, 4; "O" club, 4; Spanish  
club, 2, 3; Vice-President, Galley Slaves, 4;  
Cheer Leader, 1, 2; Junior Prom Committee, 3.





**MAXINE RENEE FOSHIER, B. A.**

Kappa Psi Delta; Vice-President, Freshman Class; French club, 3, 4, President, 4; Gala Day Committee, 3; Vice-President, Junior Class; Pan-Hellenic Council, Vice-President, 4; Players club, 4; Annual Staff, 3, 4; Gateway, 1, 2.

**HARVEY TOFT, B. A.**

**THYRA ANDERSON, B. A.**

Y. W. C. A., 1, 2, 3, 4; Vice-President, 4; French club, 1, 2, 3, 4; President, 3; Pan-Hellenic Council, 3, 4; Junior Class Vice-President; Gala Day Attendant, 3, 4; Gala Day Program, 3, 4; Phi Delta Psi, President, 3, 4.

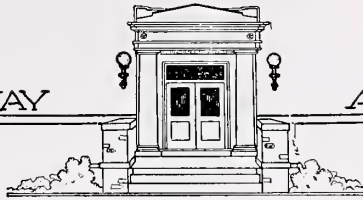
**JOHN L. RASP, B. A.**

Championship Relay Team, Hastings; Football, 4; "O" club, 4; Track, 4.

**RUTH FRASER, B. A.**

Los Sabios, President, 3, 4; French club; Dramatic club; President, Senior Class.





HAROLD C. ALBERTI, LL. B.

Lambda Phi.

J. MARIE McDE VITT, LL. B.

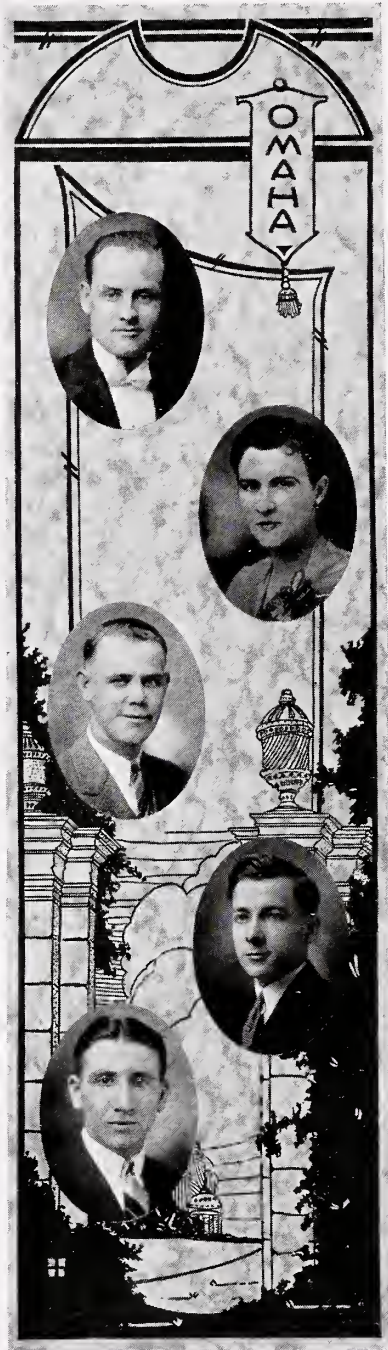
NORMAN P. ZIEMANN, LL. B.

Tau Delta Epsilon.

RALPH E. WALTON, LL. B.

DAVID J. CHESNEAU, A. B.

Sergeant-at-Arms, Senior Class; Football, 1, 2, 3, 4; Basketball, 1, 2, 3; Track, 1, 2; Tennis, 4.





### ALICE ROUSE

Music Graduate, Kappa Psi Delta, Y. W. C. A.,  
Glee club.

### JUNE GILBERT

Music Graduate; Sophomore Class, Treasurer;  
Pan Hellenic Council, 3, Secretary, 3; Sigma  
Chi Omicron, Treasurer, 3, Secretary, 3; Gala  
Day Committee, 3; Glee club, Y. W. C. A.

### RUTH GUTTING

Music Graduate, Glee club.

### WINONA STUBBS

Music Graduate, Glee club.

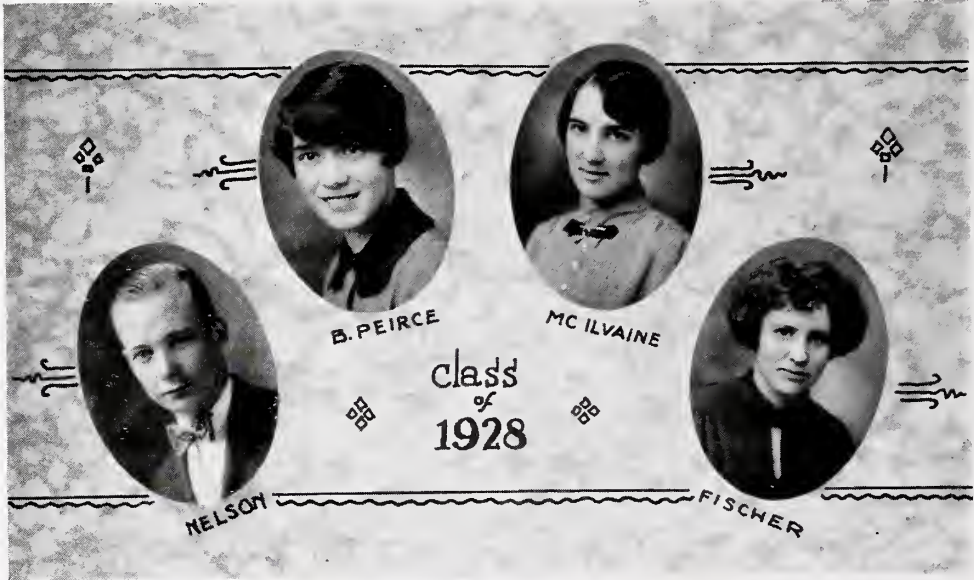
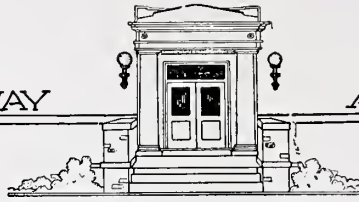
### MILDRED BOBBITT

Music Graduate; W. A. A., 2, 3; Glee club;  
Accompanist, Men's Glee club; Basketball, 1, 2;  
Tennis, 1; Varsity Varieties, 2.



# JUNIORS





## JUNIOR CLASS

**T**HOUGH somewhat delayed in getting started in the fall, the Junior class has made up for it in pep and excitement. If you have any doubts about it, just come to a Junior class meeting. When it comes to class elections, "ties" for office are the order of the day.

While our membership has decreased greatly from our Sophomore year, our participation in University activities has made up for our lack of numbers. We claim the presidents of the Y. M. C. A. and Y. W. C. A., some of the best athletes, and the business manager of the Gateway Annual, to say nothing of us as "shining lights" during our Freshman and Sophomore years.

The crowning triumph of our Junior year was the Junior Prom. Contrary to general custom, it was held off the campus this year. On April 8th, at the Mary Cooper studio, about three hundred university people danced to the Harmo Jazz orchestra.

Altogether, our Junior class has been very successful during the past year. Here's to the class of '28.





FRED A. NELSON

BETTY PEIRCE

HOWARD WOLFF

XENIA FOUTS

CHARLES WOOD







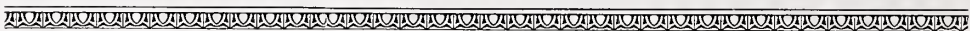
CLIFFORD HANSEN

MERRIAM RAU

CLARENCE BARTON

DOROTHY RIDDLE

BEN PRATHER





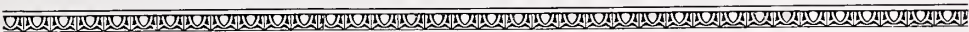
LORRAINE McILVAINE

WINDHAM BONHAM

MARGARET FISCHER

PHILIP VAN LUVEN

ELIZABETH KUHN





JUNE GILBERT

HAROLD PEERCY

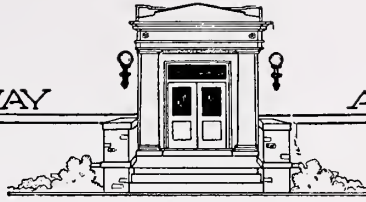
JOSIE MOTT

CLAUDE LEISURE

ANNUNCIATA GARROTTO







ELLIS LATHROP

KATHLEEN PRATHER

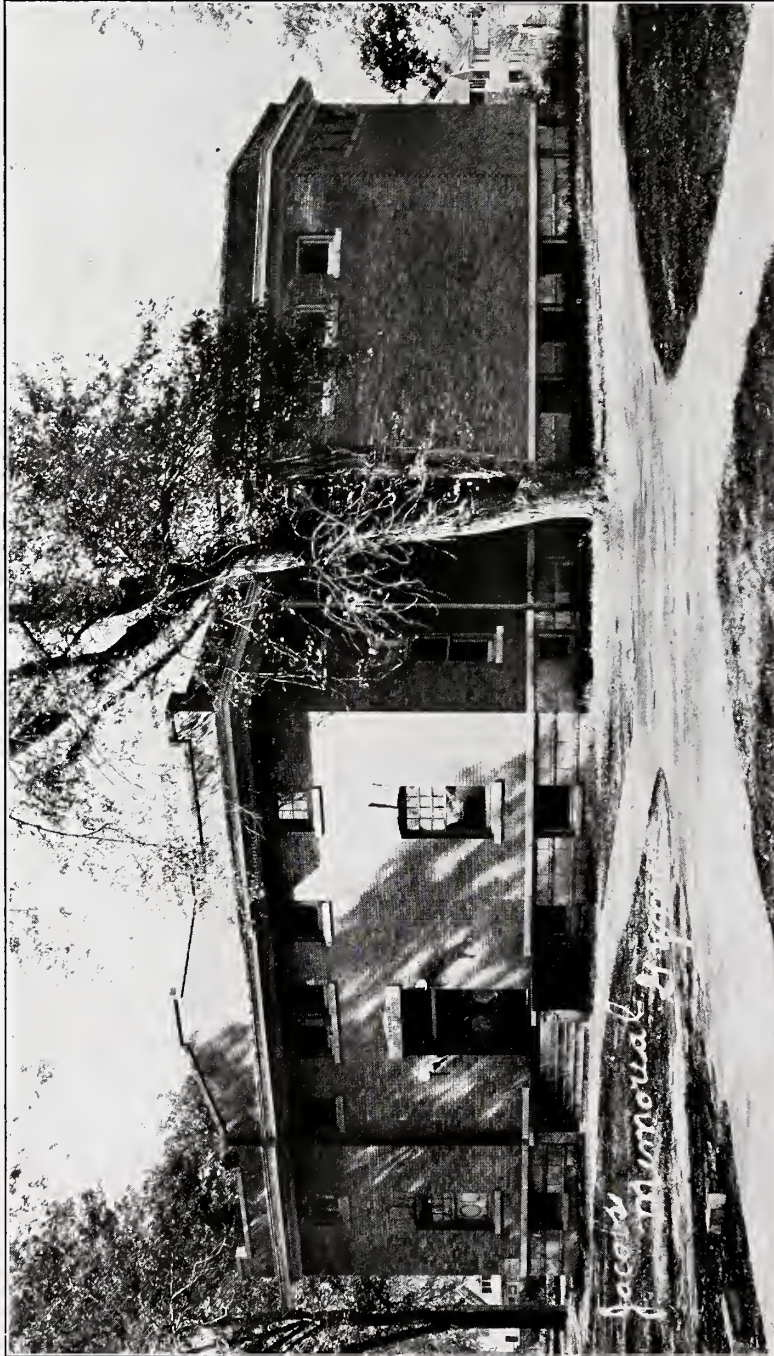
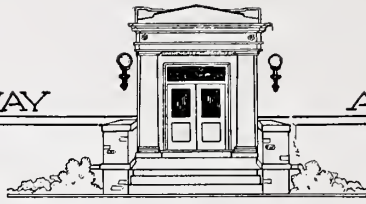
WALTER WOERNER

INA WETTON

GOLDIE MITCHELL







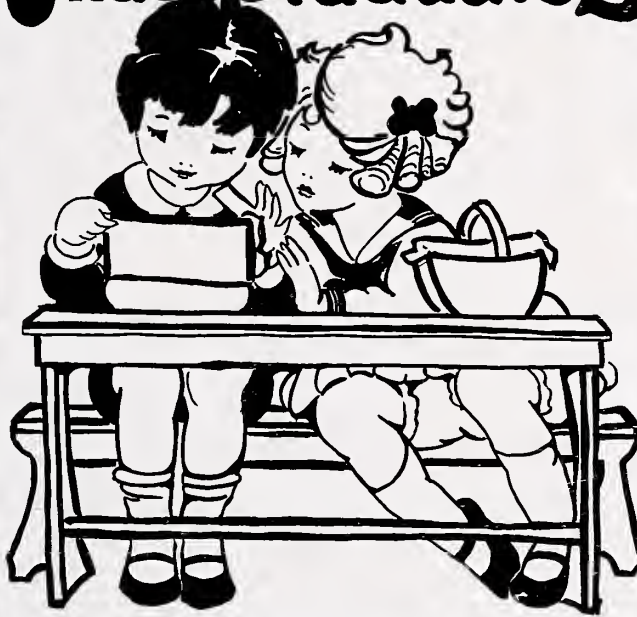
JACOBS HALL

*Jacobs Memorial High*





# UndergraduateS







CLASS OF 1929



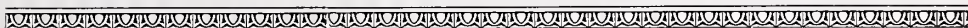
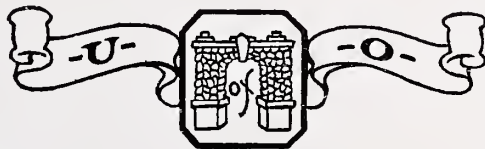
## CLASS OF 1929

**T**HE Sophomore class, the class of 1929, has done its part in making the University of Omaha a bigger and better university. They have proved themselves to be a class full of pep, natural ability, and brains, three of the prerequisites for school leadership.

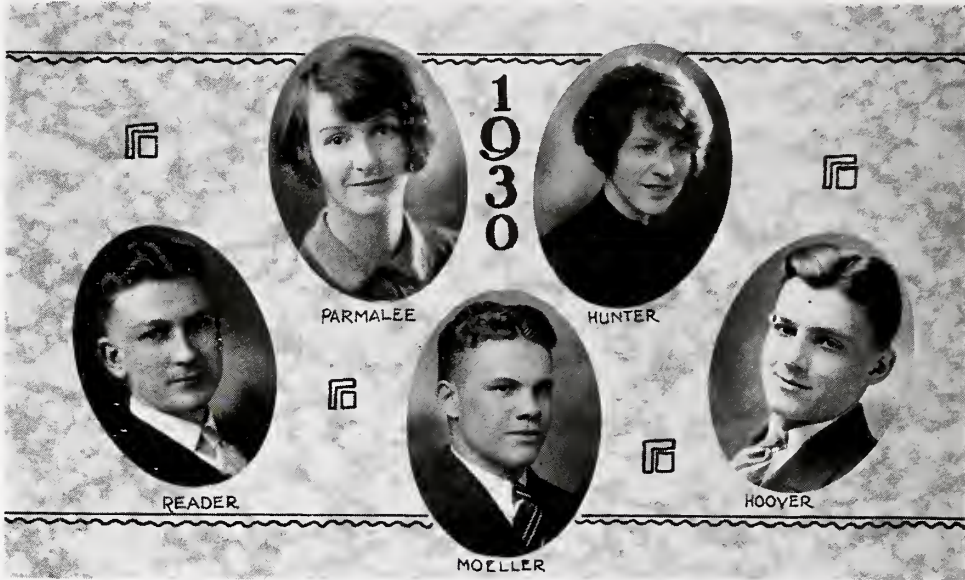
Sophomore representatives have done their share in attempting to bring glory and fame to the Cardinal institution. In athletic combat, in dramatic work, and in the various school activities many Sophomores have achieved outstanding record.

This class, as is the tradition, sponsored the annual Sneak Day held this year at the Nebraska School for the Deaf and made it a day long to be remembered by all who braved the somewhat chilly atmosphere.

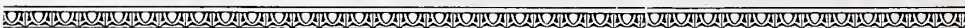
They also entertained the school at the Sophomore Spree last fall and it is to be remembered as being one of the best school parties of the year.

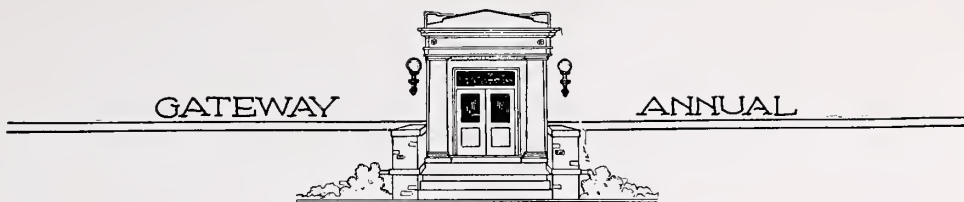






CLASS OF 1930





## FRESHMEN

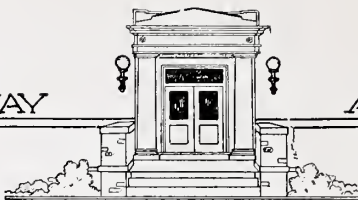
**T**wo hundred and two individuals straggling obediently over to lecture each Thursday of the year, and the same two hundred and two individuals half-heartedly grumbling about those same lectures—that was the Freshman class of 1926.

Mere Freshman lectures, however, did no dampen their school spirit and pep the slightest degree, for their backing of all school activities and functions proved to be unusual. Upholding the precedent set by the Class of '25, their first official act was to supply twelve baskets of foodstuffs for distribution to the poor on Thanksgiving. Represented in practically every organization in the school they lent their fullest support to all activities. Freshmen were prominent in both boys' and girls' athletics, Y. M. C. A. and Y. W. C. A. work, dramatic production, glee clubs, and what have you, and their all-school party given February 8 was a howling success, to say the least.

Freshman Day, May 18, added to the moral glory of the Frosh. Their green flag flying from the top of a well greased pole caused the upper classmen to call the fire department to their assistance. Aspiring and perspiring pugilists mixed in the ring at the gym, dancing followed the boxing matches, and then came the food. And such food! That's all past history now, and the Frosh have successfully served their apprenticeship as members of the University, so from now on—dignified Sophs for a year.





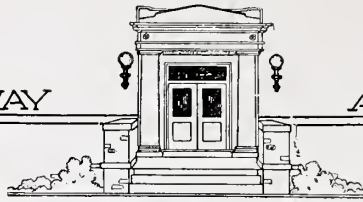




# PUBLICATIONS







· T H E · 1 9 2 7 · G A T E W A Y ·

Schleh, Editor. McIlvaine, Associate Editor. Nelson, Manager.



Top Row: Prather, Holmes, Funk, Woerner.  
Front Row: Jones, Foshier, Schleh, McIlvaine, D. Peirce, Combs.



# THE 1927 GATEWAY ANNUAL STAFF

H. W. SCHLEH, Editor-in-Chief

F. A. NELSON, Business Manager

LORRAINE McILVAINE, Associate Editor

BEN PRATHER, Sports Editor

Humor—

LOLLIE JENSEN  
TWYLA HOLMES

Snapshots—

DOROTHY PEIRCE  
ELLEN ANN SLADER

Feature Department—

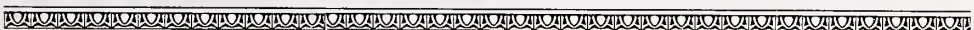
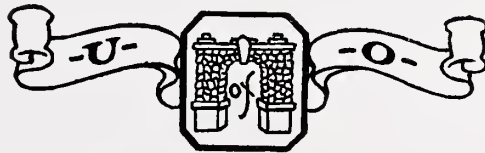
HELEN OSTERHOLM  
ELTOM COMBS  
ARTHUR FUNK

Greek Guide—

MAXINE FOSHIER  
GERTRUDE JONES

Photography—

WALTER WOERNER





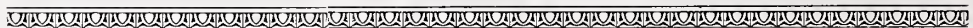


H. OSTERHOLM  
EDITOR

L. MOORE  
BUS MGR.



Top Row: H. Marks, Diemer, Schleh, Holmes, Peters, Plouzek.  
Front Row: Steele, Stidham, Osterholm, Jensen, Frankeberger, Percy.





## THE WEEKLY GATEWAY

**T**HE Weekly Gateway celebrated its fifth anniversary this year by becoming entered in the post office, and by enlarging popular departments. More issues of the Gateway were published than ever before and money was refunded the subscribers. In spite of quantity increase, quality was not lost.

Regular features of the Gateway were "Rusty Hinges," "Greeks," "Assembly Notes," "College of Commerce," and "Legal Tender."

## WEEKLY GATEWAY STAFF

### EDITORIAL STAFF

Editor-in-Chief, Helen M. Osterholm  
City Editor, Olga Plouzek  
Editorial Writer, Fred Schneider  
Society, Edith Diemer and Helen Marks  
Music, Harold K. Percy  
Sport, Blue Steele  
Feature, Twyla Holmes  
Cartoonist, Homer Schleh  
College of Commerce Correspondent, Helen Bloss

### REPORTORIAL STAFF

Leola Jensen, Helen Stidham, Marian Frieden, Arthur Funk  
Assisted by Journalism Classes

### BUSINESS STAFF

Business Manager, Luther Moore  
Assistant Business Manager, Norene Frankeberger  
Circulation Manager, Irene Peters  
Advertising Manager, Gerald Buchanan  
Faculty Advisor, F. K. Guilfoil





GATEWAY

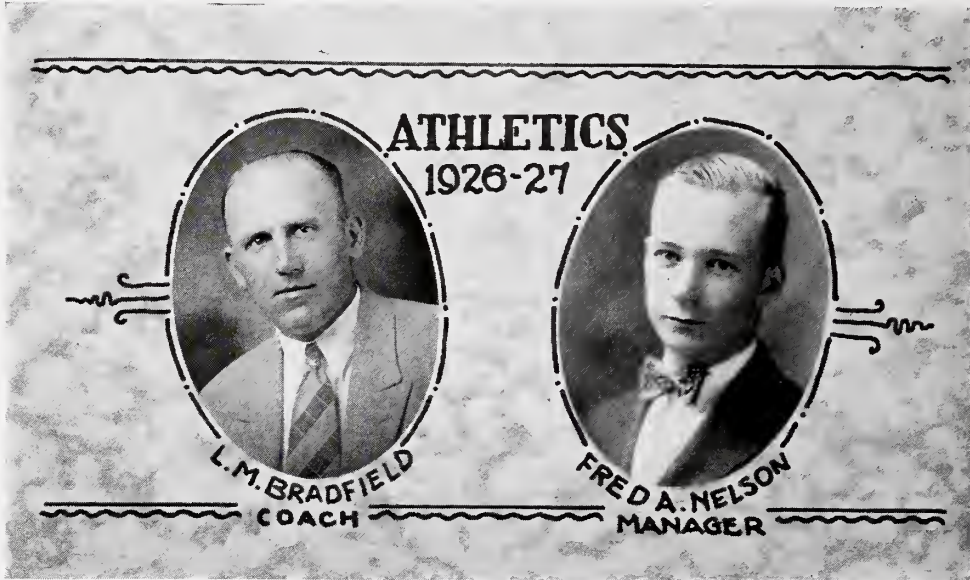
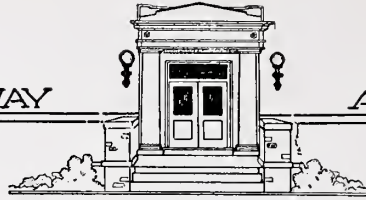
ANNUAL



# ATHLETICS







**O**UR athletics this year have been under the supervision of L. M. Bradfield, commonly referred to as "Brad," and we certainly know that a better man or a more willing worker could scarcely have been found in these United States. He has worked willingly and unceasingly for the raising of athletic standards and school spirit. He has done everything in his power to make our teams winning teams, and we must give him credit for his work.

It is gratifying to the admirers of University of Omaha sports to note the rapid growth and the increased interest in athletics during the past year. This interest is not confined to any one branch, but has widened to include every branch of college sports, football, basketball, tennis, and track. Never have the schedules been better and never have the teams worked harder to uphold what is fast growing to be a school tradition, "The Cardinals *Fight*." For all this we have only to thank our coach, who is a firm believer in the value of school spirit.

The position of athletic manager was handled in a most efficient and capable manner by Fritz Nelson. Fritz worked in complete harmony with Coach Bradfield and was always doing everything in his power to make things more pleasant for the teams.



Top Row: A. Smith, Coach Bradfield, Temple, Prather, Mallinson, Hansen, Timmons, Nelson, Wright, Miller, R. Smith.  
 Front Row: Schneider, Schafer, Hutchinson, Steele, Schleh, Rasp, Carroll.

## THE "O" CLUB

**E**VER since the school has awarded letters to her athletes, there has been a need for a letter organization. The dreams of this type of club were realized during the past year, and now we have the "O" Club on the campus. Its chief aims are, co-operation among our athletes, an organization of the letter men, and a better school. It is planned to have the members, wearing their letter sweaters, act as ushers for various school functions, thus helping to promote school spirit among the student body. Any man who has won his letter at Omaha is a member of the "O" Club.





## FOOTBALL

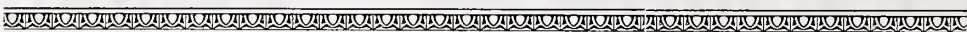
SOON after the opening of school, Coach Bradfield issued the initial call for grid candidates, as the first game was not far off. We do not wish to offer alibis for the seeming failure of the football, but at the same time it is only fair to ourselves to tell the truth in regard to the handicaps which confronted the new coach.

As usual, there were only a few letter men left in school and the material that turned out for the grid sport as a whole would be considered totally green. Coach Bradfield immediately set about the task of developing them into a presentable squad. Although the team lost most of their games, they improved noticeably as the season wore along. School spirit dwindled, and toward the middle of the season "Brad" had barely eleven men to work with. A mammoth pep meeting that will never be forgotten yielded great results, and there was plenty of material to work with from that time forward.

### THE SEASON'S RECORD

Doane - - - 73	Grand Island 21	Central - - 49
Omaha - - 0	Omaha - - 0	Omaha - - 0
Dana - - - 0	Wayne - - 21	Alumnae - - 0
Omaha - - 25	Omaha - - 6	Omaha - - 12
	York - - - 12	
	Omaha - - 0	

The scores above tell part of the season's story, but not all. They do not show, except in the dwindling scores of our opponents, how our boys kept a stiff upper lip, kept at the task before them, and worked as best they could. After all, is it not the determination to fight to the end that athletics seek to accomplish? This being true, our season has not been a failure. Much to the contrary, it has been a distinct success, for our boys certainly did not give up. But through that intangible thing called school spirit, prevalent among University of Omaha *athletes* (at least), a more experienced lot of players have been gained, and with more of the same kind of coaching, not a few victories should be recorded next year. So, here's to next year, and may we be able to cheer for a team that wins.





TIMMONS

CAPT. HANSEN

CARROLL

HUTCHINSON

MILLER

SCHLEH

TEMPLE

**FOOTBALL**  
19 26

STEELE

NELSON  
MGR.

SCHAFFER

MOELLER

RASP





## FOOTBALL "O" MEN

**C**APTAIN CLIFF HANSEN was the power of the Cardinal team. The big Dane played either in the line or a back-field position, and could always be found in the thick of the fight.

### RUSSELL MATTSON, Center

Mattson thought that a "social butterfly" should not attempt to dabble in athletics, but he found himself to be a real star when he could get the right inspiration from the grandstand.

### HOMER SCHLEH, Guard

Schleh discovered that 200 pounds were not given any man merely for beautifying purposes, and he became one of the hardest hitting linesmen on the team. Schleh is a Senior and should have been informed of his ability sooner.

### JOHN RASP, Guard

Johnny was one of the hardest workers and most faithful men on the squad. Although he is a Senior, this is his first year in football.

### FRED MILLER, Tackle

Here's another man who made up for his lack of weight with a surplus of fight and nerve. He should make an even better man next year.

### HUGO CARROLL, Tackle

Carroll came out for football last fall a raw, inexperienced recruit but before the season was over he was playing with the best of them.

### DUANE HUTCHINSON, End

Light, but fast and aggressive. "Hutch" made his presence count for something in every game he played.

### ED. SCHAFER, Half

Omaha gained a valuable man when Ed forsook Washington U. and decided to come here to school. His forward passing, shifty open field running and hard tackling made him a man hard to beat.

### BLUE STEELE, Quarter

"Blue" is another proof that one doesn't have to be big in order to be a good football player. Here is a man who is improving his game every year.







## FOOTBALL "O" MEN

### DAVE CHESNAU, Tackle

Dave leaves a gap in the forward wall next year which will be hard to fill. For four years, his sterling play in the face of victory or defeat, has been one of the features of the Cardinal attack.

### MERLE TEMPLE, Fullback

When Temple hit the line, something had to give way, and it usually was the opponents' lineman. He was also a good defensive man.

### HENRY MOELLER, Half

Probably the smallest man to make a college letter in football in Nebraska, but ask York or Wayne if he is an easy man to stop. His big weakness is his lack of weight.

### BOB SMITH, Half

Bob's game in football is characteristic of whatever he undertakes. He gives all he has, and fights hard every minute.

### GLENN TIMMONS, Tackle

Big, fast, and powerful, Timmons had nearly every requisite which goes toward making a good tackle. Another comer for next year's team.

### EMMETT SPRAKTES, Tackle

Emmett was Brad's official linesman through the whole season. He made all the trips with the team, and should have had a berth in the line. He was consistent in practice, and his hard hitting in the Alumni game was a real help.

### BEN PRATHER, End

Although Prather did not have a berth on the squad, he turned out through the whole season. Illness last year caused him to be ineligible for play, but he will be back next season, and will fill the captain's shoes creditably.

### CARROLL WHITEHOUSE, Center

"The Killer." Brad's original terror. He played at center, and gave all he had to tear through the enemy's line. Whitehouse was Mattson's understudy on the line, and when he wasn't after Russ' blood, he played good ball.

### CARL STROMBERG, Guard

Oscar didn't get into game, but he came out regularly, and gave the Varsity plenty of opposition. You can't mix love and football.





## BASKETBALL

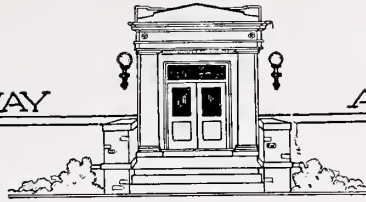
**T**HE outlook for another winning basketball team this year looked exceedingly bright, for when Coach Bradfield began looking over his candidates he found that he had six letter men from last year, besides the usual abundance of new material. The Card mentor then arranged a heavy sixteen-game schedule, including some of the strongest teams in Iowa and Nebraska. Bradfield worked his men hard every day and the most aggressive team in the history of the school was almost certain. Excellent defense material was plentiful. Cliff Hansen, Dave Chesneau and Bob Smith were all veteran guards. With this trio of defensive stars the opponent's score column was not likely to run very high. Glenn Timmons and Merle Temple were the only Freshmen showing ability enough to press the above mentioned for their positions.

The point-getting burden of the team again seemed destined to rest on the shoulders of Captain Fred Schneider and Ben Prather, both from Council Bluffs. Blue Steel and Art Smith also showed class in the early season workouts.

Then began the proverbial hard luck blows which never seem to overlook our teams. Hansen and Smith were lost to the team when they irritated old football injuries and were forced to drop out entirely. Glenn Timmons, who is working his way through school, obtained a job that forced him to drop the cage sport. Dave Chesneau was hurt severely in the Midland game and he, too, was out for the remainder of the season. And due to a misunderstanding with the state association, Ben Prather was declared ineligible for three conference games.

The Cardinals played the hardest and the largest schedule in the history of the school. They won only six out of the sixteen games, but nearly every defeat was by just a small margin, and at no time was the team distinctly outclassed.





STEELE

PRATHER

1926~27  
Basketball~

UNIVERSITY  
of  
OMAHA

WRIGHT

SMITH

TEMPLE

MALLINSON



## BASKETBALL "O" MEN

FRED SCHNEIDER, Center and Guard

Captain Freddy Schneider, captain of the team for two years, has made cage history at the University of Omaha. For two years he was given All Conference rating. A born basketball player if there ever was one.

BLUE STEELE, Forward

Blue's consistent, hard play won him the captaincy of next year's team. Under his leadership, and with most of the old letter men returning, prospects for next season are bright.

BEN PRATHER, Forward and Center

Prather is a three year man and this year was selected as a forward on the second All Conference team. His brilliant play stamped him as one of the best forwards that ever wore the Cardinal and Black. High score man 1926-27.

ART SMITH, Forward

Art Smith, unheralded and unsung, practiced faithfully all year and before the year was half over he won a regular berth on the team. His accurate goal tossing made him a valuable man.

MERLE TEMPLE, Guard

Temple's play at the back guard post improved with every game. Watch his smoke next year!

MAX WRIGHT

The Adonis of the squad. A little man, but one of those little men who are better than lots of big ones. He was one of the hardest workers on the squad.

CHUCK MALLINSON

Some folks are still talking how "Lucky Lindy" slipped in those baskets and won the game against Trinity. Although not a regular, he gave all he had whenever he got to play.











Her Majesty  
MISS GERTRUDE JONES



## 1927 GALA DAY

**T**HE University's traditional Gala Day was fittingly observed on Friday, May 20th. In the forenoon the inter-class Track Meet took place at the North High track. Ed Schafer, a Sophomore, was high point man of the day, with a total of nineteen and one-half points to his credit. Schafer placed in the following events: First in the 100-yard dash, second in the 220 and 440, second in the javelin throw, and third in the broad jump.

In the Tennis Tournament, Miss Helen Hoover, a Senior, took her fourth consecutive title in the women's singles, winning from Vivian Krisel, a Freshman. Howard Wolff, last year's runner-up, won the men's singles from Homer Schleh. Schleh won his way through the quarter-finals and semi-finals and then played Wolff the afternoon of the same day.

Arthur Smith took the measure of Blue Steele in the men's golf finals, after two strenuous rounds of play. The winners in all these events were presented with silver loving cups.

The Coronation Pageant was without a doubt the most brilliant feature of the day. Gay dances and pantomimes preceded the crowning of the beautiful queen, Miss Gertrude Jones. It is estimated that over two thousand thrilled spectators witnessed the ceremonies. Again, on the evening of Monday, May 23, the entire pageant was re-enacted, by popular demand.

On the evening of the 20th, in Jacobs Hall, a nine-act bill of feature vaudeville was offered to a capacity audience. There were dances, comedy, music, tragedy, and what not, all well blended into a pleasing program.

It was largely through the untiring efforts of the Central Committee that Gala Day this year was such a great success.

Fred Schneider, as Central Chairman of Gala Day, proved himself to be a good organizer, a man with original ideas, and a competent leader. He chose his staff carefully, assigned them definite duties, and they gave him their co-operation. Under such conditions Gala Day was bound to be a success.

The other members of the committee—Ruth Betts, Senior representative, June Gilbert, Junior, Arthur Kastman, Sophomore, and William McGavern, Freshman, proved themselves to be very capable.





## ASSEMBLY



V. H. VARTANIAN

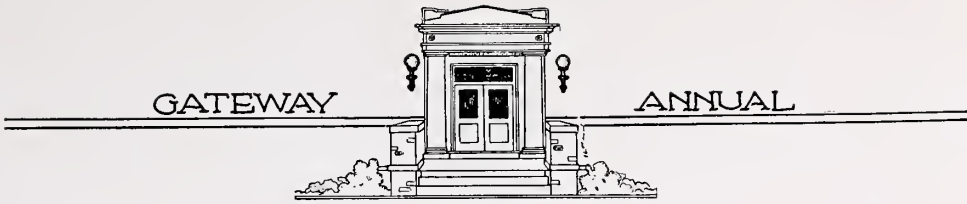
THE work of the Student Assembly during the past year was marked by the steady development of all its valuable contributions to the student life. More than ever it proved to be the place where students could meet in common accord. In its religious atmosphere, which is devoid of sectarianism, all race and class distinctions were obliterated, thus creating community spirit and cheerful fellowship. Special attempt was made to have interesting and suitable programs and to bring before the student body important men and women with a vital and significant message. The success of these programs was shown by the considerable increase in attendance. An average of 150 responsive and interested students regularly attended these brief and informal meetings.

One of the outstanding events was the conference held by Dr. Gossard. As a result of the splendid discussions conducted by him the students were given a better understanding of great social and moral issues.

Great care was exercised in the selection of such men and women who would represent different professions and activities, as indicated by the following partial list:

- John L. Webster, Prominent Attorney, Omaha, Neb.
- Dr. Charles Ellwood, Professor of Sociology of University of Missouri.
- All student assembly, introducing different organizations.
- Mr. Edward Burke, President of Board of Education.
- Dr. Calvin Butler, Pastor North Presbyterian Church.
- Dr. Larimore Denise, President Omaha Theological Seminary.
- All student pep assembly for games.
- Dr. C. E. Henry, Lord Lister Hospital.
- Dr. Clarence Allen, First Methodist Church.
- Dr. H. M. McClanahan, Prominent Child Specialist.
- All student pep assembly for debates.
- Rev. C. E. Raue, Stated Clerk of Omaha Presbytery.
- Rev. A. B. Vanderlippe, Pastor Presbyterian Church of Florence.
- Dr. H. C. Gossard, Regional Secretary College Y. M. C. A.
- Mrs. William Gary Brown, of Chicago, Ill., Prominent Lecturer on "Washington, D. C."





# ORGANIZATIONS





Top Row: Wilmoth, Stidham, Wolff, Hawkins, Chaloud.  
 Front Row: Stromberg, Betts, Guilfoil, Fouts.

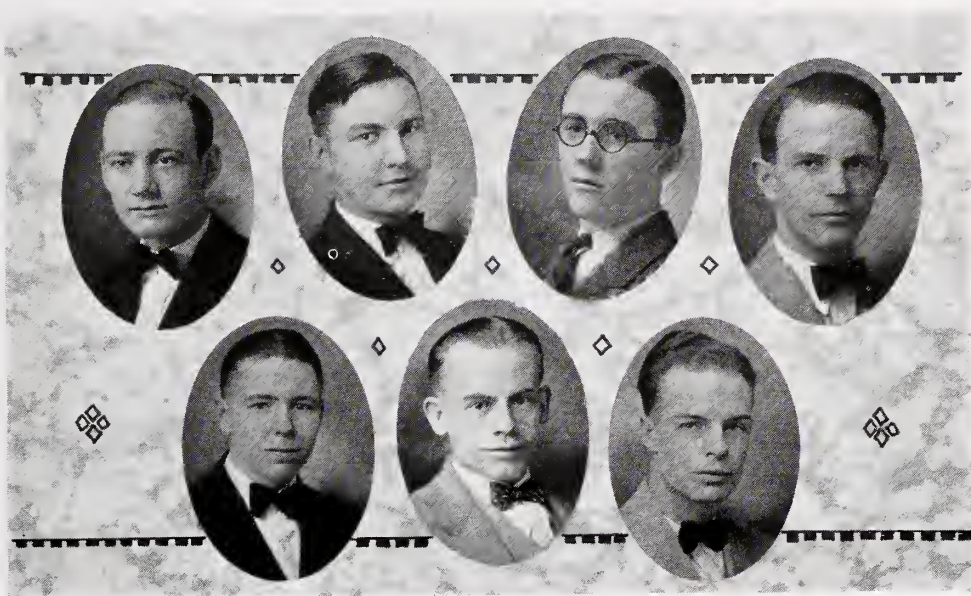
## STUDENT COUNCIL

**D**UE to the fact that the various class representatives were not chosen earlier in the semester, the Student Council was not organized until January, when Carl Stromberg was elected president, and Zenia Fouts secretary-treasurer.

In spite of their late start, the Student Council, when faced with a crisis, was ready and settled the matter to the satisfaction of all concerned. It must be said that of all organizations at the University of Omaha, the Council received more publicity than any of them this last year.

It is a very well known organization on the campus and serves as a unifying factor between students and faculty.

The representatives, two from each class, one elected by the class and the other appointed by the faculty, are: Seniors, Carl Stromberg and Ruth Betts. Juniorfs, Howard Wolff and Zenia Fouts. Sophomores, Helen Hawkins and Elwood Wilmoth. Freshmen, Delmar Chaloud and Helen Stidham.



Top Row: Dunham, Huber, Butler, Bonham.  
 Bottom Row: Denton, Coach Guilfoil, Hogle.

## DEBATE

**N**EVER before, in the history of the University of Omaha, did the debating team branch out and meet so many of the best college teams as they did this year. Teams from four states were met, and the kind of competition afforded all of them reflects great praise upon the school and Mr. Guilfoil's desire to place debating upon a higher plane.

Besides taking part in the State Conference debates Omaha University won the championship of the newly-formed Nebraska-Missouri league, defeating its competitors, Peru, Tarkio and Marysville each by a unanimous vote.

The high spots of the season were the two debates on prohibition. On March 25, the Northwestern affirmative met the University of Omaha negative on the question, "Resolved, that the eighteenth amendment should be abandoned." On March 30 the Wyoming affirmative met the Omaha negative on the question, "Resolved, that the Volstead act be modified to permit the sale of light wines and beer." Although no official decision was rendered in either debate, Omaha claims a technical victory in each, by means of the vote of the audience.





## THE UNIVERSITY Y. M. C. A.

**D**URING this past year the "Y" on our campus has had a signally successful program. Under the efficient leadership of the president, Ben Prather, the meetings were of a decided benefit to all who were wise enough to attend, and the fellows were, from week to week, favored with speakers of local and national repute. There has been really noteworthy co-operation both among the men and the officers. We were represented at the several state meets by men delegated by the cabinet, and these men brought back many helpful reports to us.

One of the outstanding accomplishments which the "Y" may well be proud of its its annual road show, "Varsity Varieties." This year it was under the management of Homer Schleh, and was easily one of the best shows ever offered to the students. An eight-act bill of high class vaudeville was presented, and besides being a social success it also netted a nice little sum to be left for next year's activities.



## THE Y. W. C. A.

**T**RADITION calls for a "Y" mixer at the beginning of every school year, and this year's was a big and successful one. The purpose was to get everyone acquainted with everyone else, right at the opening of school, feed them well and play with them.

Good programs were held every Tuesday and interest in the "Y" increased rather than decreased as the year ran on. The outstanding event of the social year was the St. Patrick's Day party in the gym. It was a stag—or should we say doe?—party, and nearly every girl in school attended.





## WOMEN'S ATHLETIC ASSOCIATION

**T**HE Women's Athletic Association this year received its national charter and proceeded to hold tournaments and award letters according to national rules.

The Association was composed of a few upper classmen and those Freshmen who won letters in basketball. A track meet and tennis tournament were held at the close of school, and letters were awarded at the annual banquet.

Under the capable heading of Gwen Irwin, president, the Association more than doubled its activities and membership this year.

The girls' basketball, under supervision of the W. A. A., turned out to be the finest girls' court machine in the state, and they have the record of never losing a game during the entire season.





## GIRLS' BASKETBALL TEAM

**U**NDER the supervision of the W. A. A., the girls organized a court machine that was second to none in the state. There was plenty of material, and the team was fortunate to have the services of Coach "Min" Peterson, herself a letter woman from the teams of the past four years. The girls played a brand of ball that all but shut out their opponents.

Leah Daubenhayer was the high-point "man" of the squad, and she was responsible for much of the success the team enjoyed. Noteworthy, too, were Gwen Irwin, Lu Fugate, Sally Slader, and, for that matter, the whole squad deserved all the credit it received. A complete list of the scores was not available for publication, but let it suffice to say that the team piled up a mammoth score compared to that of its opponents.



Top Row: Knollenberg, Bowers, Betts, Sinclair, Fuller, Morgan.  
 Middle Row: Kreymborg, Parmalee, Thorsen, Osterholm, Weymuller, Woods.  
 Front Row: Larson, B. Peirce, G. P. Borglum, Foshier, Giangrosso, Smith.

## LES PARISIS

**L**ES PARISIS, the French Club, with an active membership of twenty-five, was organized in December. Maxine Foshier was chosen president, and Betty Peirce secretary-treasurer.

Three meetings were held during the year. Plays and stories were read in French, and the programs included French games and conversation. Refreshments, usually typically French, were served.

The name Parisis is historical. In the Seine river there is an island called Parisis, near Paris. The inhabitants were originally known as "les Parisis," and it is for this island and its inhabitants that the club is named.

Professor George Paul Borglum was sponsor.





Back Row: Rullman, Linaberry, Jones, Bradway, Frahm, Reader, Foltz, Toft, Minard.

Middle Row: Corbaley, Peercy, Sacquety, Reynolds, Savidge, Fugate, Adams, Pierce, Alexander, Harger.

Front Row: L. Combs, D. Pierce; Mennie, Sergeant-at-Arms; Jetter, Vice President; Miss Augusta Knight, Sponsor; McIlvaine, President; E. Combs, Secretary-Treasurer; Larson, Reporter; E. Pierce, Jones.

## "PAINT POT"

**T**HE "Paint Pot" began this year's activities with a party for new members at the home of Miss Knight. Other meetings for the year were: An excursion to Dr. Gilder's studio, a Pot Luck dinner at the home of the Laverty twins, a talk by Miss McCabe at Technical high school, a weiner roast at Elton Combs' cottage "Mo-z-in" at Lakewood Club, a visit to Mr. Mark Leving's studio where he demonstrated the process of etching, and a moonlight hike to Bellevue. The outstanding event of the year was the Studio Tea, given February 11th in the Art rooms. Students' work, consisting of drawings, paintings, and leather and metal work, and several of Miss Knight's paintings, were exhibited. Tea was served throughout the afternoon.

The "Paint Pot" is one of the most active organizations and was successful in all its programs. Its membership is made up of present students of art and several past students.

—E. T. C.





Top Row: Betts, Thornton.  
 Middle Row: T. Marks, Andrews, White, Jones, Crain, Starke.  
 Front Row: Mattson, Kreymborg, T. E. Sullenger, Hoover.

## ALPHA KAPPA DELTA

**H**AVING scholarship for its challenging aim, the national honorary sociological fraternity, Alpha Kappa Delta, has been steadily growing, until now there are sixteen universities with chapters. University of Omaha is proud to have the first chapter in Nebraska. The organization of the Alpha Chapter took place in November, 1926.

The society is non-secret and aims to encourage scholarships among sociology students. Elections to membership in a chapter are practically on the same basis as elections to Phi Beta Kappa, but, of course, limited to students of sociology. Emphasis is placed on social research.

T. Earl Sullenger is our national representative; C. Russell Mattson, president; Mildred E. Andrews, secretary; Thelma A. Marks, treasurer; Gertrude Jones, Helen Hoover, Helen Kreymborg, Cleo Bess Thornton, Mrs. F. H. Cole, James A. Crain, C. Evans White, Ruth E. Betts and Anne M. Starke.



## DRAMATICS

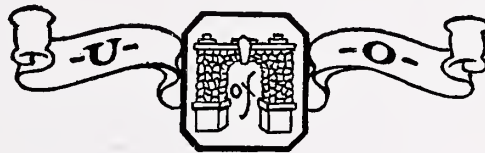
THE Dramatic Department of the University has enjoyed an unusually active and successful year. With the addition of the new class in dramatic production, under the direction of Mrs. S. A. Harrington, and the opening of dramatic tryouts to the whole student body, the department has grown in influence on the campus, and has gained distinction outside.

"At the Gate Beautiful," a religious play given by the members of the class in dramatic production, was repeated by request before fourteen church and social audiences.

During National Drama Week, the University of Omaha players were the first to have the honor of completing, acting, and staging a play which was broadcast from the new Crystal Studio at W. O. W.

"Rival Ghosts," a three-act comedy, and a recital by the organization, closed the season successfully. With the progress of this year behind us, and with new plans laid for the coming dramatic season, we look forward to even better things, and ultimately to the possibility of obtaining one's major in Dramatics.

—Plouzek, '30





Top Row: Strawn, Myers, Chalupsky.  
 Middle Row: Chaloud, D. Peirce, Johnson, E. Peirce, Leon, Dunn.  
 Front Row: Enright, Marshall, Miss Ward, Fischer.

## GAMMA PI SIGMA

### HONORARY CHEMICAL SOCIETY

**T**HE Gamma Pi Sigma society was formed at the beginning of the second semester of this year by Miss Ward, the head of the Chemistry department. There were thirteen charter members. The purpose of the society is to promote scholarship and general interest in the Chemistry department. Members are selected by the head of the Chemistry department from a limited percentage of the higher ranking students in the chemistry classes.

There are two officers in the society. Charles Wood is the first president, and Walter Marshall secretary.

The society is trying to interest neighboring schools in forming similar chemistry societies, and a chapter is now instituted at Creighton.

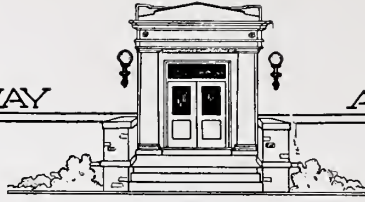




Top Row: Groves, Sinclair, Marshall, Myers.  
 Middle Row: Astleford, Frahm, Woerner, Pierce, Wood, Peterson, Lathrop,  
 Betts, Mainard, Leon, McShane.  
 Front Row: Alger, Algee, Douglas, N. Ward, Bowers, Jenkins.

## CHEMISTRY CLUB

THE Chemistry Club is one of the newest organizations at the University of Omaha. It was organized in February, 1927. The need of an organization among the students interested in chemistry had been felt for some time, and it culminated in the formation of both the Chemistry Club and the Honorary Fraternity. Its purpose is broad; it is to further the interest and knowledge of chemistry, which has been done this year by having speakers every two weeks and by sponsoring trips through laboratories and industrial plants. Its membership is open to those students who are taking a minor or major in chemistry, and its active membership to those having completed a year's work in chemistry. However, its lecture meetings and trips are open to any students interested. The increase in membership has been rapid considering the short time the Club has been in existence, since it has grown from the original twenty members to twenty-eight, at the time of writing, and applications are still being received.



## THE GIRLS' GLEE CLUB

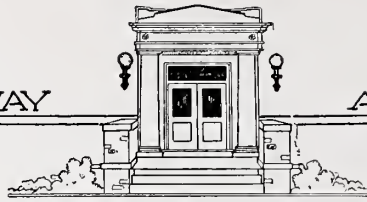
**A**LTHOUGH circumstances prevented the Girls' Glee Club from accomplishing all that Mrs. Nell Gillard, director, set out to do, the Glee Club did promote good feelings among the girls.

Composed largely of the public school music girls, the Glee Club did not restrict its membership to music students, but drew from every class and department.

A big party at the end of the year, with stunts, games, eats and dancing, brought the season to a favorable climax.







Top Row: McIlvaine, Bowers, Belt, Hansen, Slader.  
Front Row: Foshier, Schleh, Gilbert.

## THE PAN-HELLENIC COUNCIL

**T**HE activities of the Council for the past year have been of a very helpful nature, and difficulties, which might have been serious, were taken care of in such a manner as to prove the real value of the Council in the Greek life of the campus. Questions of rusing, pledging, and the like, were referred to this body, and marked harmony prevailed where before there was open ill-feeling. From a social standpoint, it may be said that the Pan-Hellenic Council did itself proud, for the Pan-Hellenic dance was one of the best hops of the year. It is to be hoped that the newly-elected Council will have as profitable and peaceful a regime as did the retiring group.



Top Row: Thomas, Rhodes, Reimers, Carson, Kilbourne.  
 Middle Row: Humphreys, Clow, Reiff, Reeves, Belding, Kohansky, Combs.  
 Front Row: Isham, Holmes, Themanson, Anderson, McIlvaine, Nelson, Kelly.

## PHI DELTA PSI

Founded January, 1923

1927

Thyra Anderson

1928

Lorraine McIlvaine

1929

Luella Belding  
 Luree Combs

Twyla Holmes  
 Merla Themanson

1930

Catherine Clow  
 Marie Humphreys  
 Delpha Isham  
 Lucille Kilburne

Dorothy Kohansky  
 Phyllis Reiff  
 Vivian Rhodes  
 Lorraine Thomas



Top Row: Musselman, Parmalee, Rouse, M. Jetter, Linnaberry, Smith.  
 Middle Row: Jensen, Betts, Larsen, Hoover, Kreymborg, Clary, Ayer, E. Jetter.  
 Front Row: Jones, Foshier, Baker, Adwers, Pardun, Helmer.

## KAPPA PSI DELTA

1927

Ruth Betts	Gertrude Jones
Maxine Foshier	Helen Hoover
Helen Kreymborg	

1928

Eloise Musselman

1929

Alice Ayer	Agda Larson
Elaine Clary	Leola Jensen
Emma Jetter	Alice Rouse

1930

Frances Adwers	Dorothy Parmelee
Helen Baker	Dorothy Pardun
Dorothy Linaberry	Alice Smith
Mary Foltz	





Top Row: Thomsen, Meis, Morgan, Durkee, Seabrook.  
 Middle Row: Tennant, Savidge, Fugate, Groves, Plouzek.  
 Front Row: McIntyre, Lindleaf, Rau, Belt, Irwin.

## GAMMA SIGMA OMICRON

Founded 1925

1928

Merriam Rau

Chloie Sergeant

1929

Hazel Belt

Mildred Thomsen

Audrey Groves

Blanche McIntyre

Gwendolyn Irwin

Dorothy Tennant

Eunice Lindleaf

Ruth Durkee

1930

Olga Plouzek

Lucille Fugate

Cerina Morgan

Dorothy Seabrooke

Clarissa Meis

Marion Savidge



Top Row: Busch, Hunter, Roseland, Winkler, Crawford.  
 Middle Row: Woods, Stidham, Diemer, Haney, H. Marks.  
 Front Row: Minkler, Gray, Gilbert, D. Peirce, T. Marks, E. Peirce.

## SIGMA CHI OMICRON

Founded 1913

1927

Thelma Marks

1928

June Gilbert

1929

Helen Gray

Dorothy Peirce

Eleanore Peirce

Ada Roseland

Helen Marks

1930

Dorothy Crawford

Elizabeth Hunter

Ada Haney

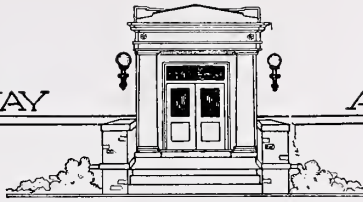
Helen Stidham

La Verne Woods

Addean Busch

Hazel Minkler





Top Row: G. Hanson, Comp, Larsen, Watt, Northcutt.  
 Middle Row: Daubenheyer, Hawkins, Graham, Thorsen, E. Hansen.  
 Front Row: Slader, Thornton, Winters, Johnson, Weymuller.

## PI OMEGA PI

Founded 1923

1927

Cleo Bess Thornton

1928

1929

Helen Hawkins  
 Harriett Northcutt  
 Margaret Weymuller

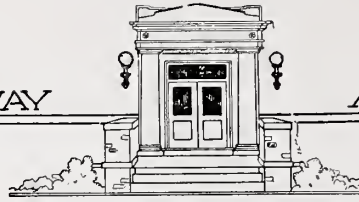
Ellen Ann Slader  
 Ethelda Johnson  
 Margaret Grayham

1930

Alice Mae Christensen  
 Patty Comp  
 Evelyn Hansen  
 Margaret Watt

Nellye Thorsen  
 Gladys Hansen  
 Grayce Larsen  
 Leah Daubehyer





Top Row: Wright, McGavren, Hutchinson, Myers.  
 Middle Row: Blunk, Temple, Johnson, Timmons, Mallinson, Hoover.  
 Front Row: Price, Hansen, Nelson, Wilmoth.

## PHI SIGMA PHI

Founded 1910

### Officers

Fred A. Nelson, Grand Master  
 Clifford H. Hansen, Deputy Grand Master  
 Elwood G. Wilmoth, Chancellor  
 Phillip D. Price, High Recorder  
 Arthur L. Kastman, Marshall

### Active Members

Raymond Blunk '30	Charles Mallinson '30
Clare Goodsell '28	Fred Nelson '28
Clifford Hansen '28	Phillip Price '29
John Hoover '30	Larvin Rullman '30
Duane Hutchinson '30	Merle Temple '30
Floyd Johnson '30	Glenn Timmons '30
Arthur Kastman '29	Elwood Wilmoth '29
Wm. McGavren '30	Max Wright '30



Top Row: Pedersen, Reader, Jones.  
 Middle Row: Funk, Smith, Henningson, Gamble, Steele.  
 Front Row: Carroll, Prather, Schleh, Herzog, Jenkins.

## THETA PHI DELTA

	1927	
Homer W. Schleh		F. Kenneth Gates
	1928	
Ben Prather		Windham Bonham
	1929	
Gaylord Anderson	John Herzog	
P. Ham Jenkins	Bob Smith	
F. B. Schneider	Damon Martis	
Blue Steele	Arthur Funk	
	1930	
Henry Pedersen	Harry Gamble	
Byron Dunham	Alf. Henningson	
Emmett Spraktes	Hugo Carroll	
Julius Reader	Harry Jones	
Faculty Advisor, W. G. James		



Top Row: Davis, Betz, Johanson, Chapman, Stitt.  
 Middle Row: Reynolds, Trilety, Astleford, Fuller, Alger, Wood.  
 Front Row: Bowers, Stromberg, Guilfoil, Lothrop, Lamoreaux.

## ALPHA SIGMA LAMBDA

Founded 1919

Seniors

Carl O. W. Stromberg

Theodore Drdla

Juniors

Ellis H. Lathrop

Charles A. Wood

Sophomores

Warren F. Bowers

Ralph Fuller

K. Neil Chapman

Grant Astleford

Donald Betz

Oliver Johanson

Raymond Bjork

Carl Alger

Freshmen

Rupert Stitt

Fred Trilety

Vernon Wood

Milton Reynolds

William Lamoreaux

Gale Davis

Faculty Advisor, F. Kelsey Guilfoil







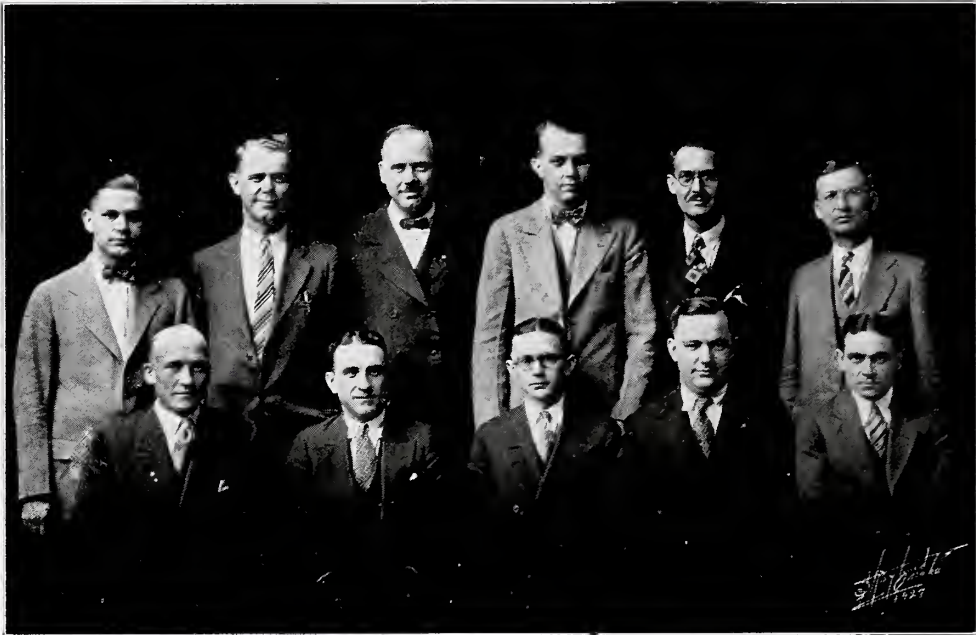
## LAMBDA PHI

### ACTIVE MEMBERS

H. V. Alberti	Wm. Gatz	C. F. Shopen
L. H. Busman	E. Kleborg	M. W. Smith
R. S. Coulter	Don Knott	H. Story
W. F. Curran	Henry Long	J. C. Thomas
Leroy Denton	Max Marshal	A. C. Thompson
M. C. Dudley	B. M. Meile	W. F. Van Burgh, Jr
A. W. Francis, Jr.	Conrad Olson	J. W. Yeager
Donald Fox	Franklyn Royce	

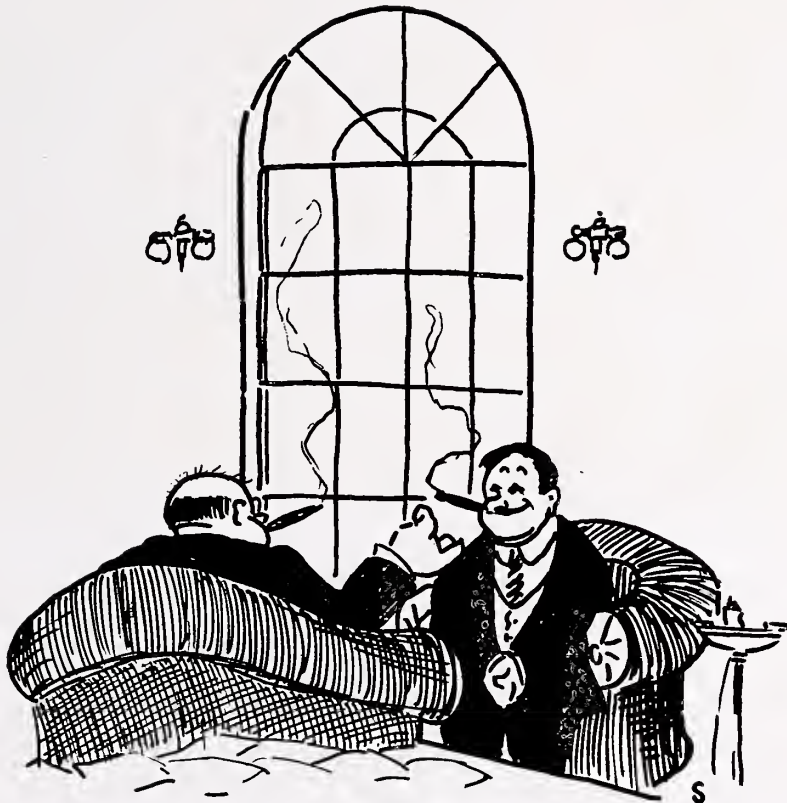
### HONORARY MEMBERS

W. M. Burton	W. W. Slabaugh
T. B. Dysart	A. C. Thomsen
H. Saxton	Judge A. C. Troup
R. A. Van Orsdel	



## TAU DELTA EPSILON

C. J. Adams	P. A. Floersch	Jos. L. O'Brien
J. M. Adams	R. U. Gantt	R. G. Pallas
W. J. Bowen	E. V. Grosvenor	W. S. Peddicord
E. F. Brassil	J. J. Jesse	Joe Nichol
John J. Brotherton	S. H. Kelley	H. C. Schoening
M. J. Buckley	Wm. M. Luse	C. E. Walker
C. Tom Edee	Jay Leeka	C. J. Wilson
C. E. Fisher	L. B. McDonald	N. P. Zieman



# MEMORIES





Baked Fresh Every Day

In Omaha's Snow White Bakery



And FRESH at Your Grocers

*Always Ask for ITEN'S by Name*

Lane's  
Rexall Drug Stores

We Make Banquet Ice Cream  
for All Occasions

*Kenwood 0912*

24th and Ames                      16th and Locust  
30th and Fort

---

F. D. WEAD and  
D. H. BOWMAN

Real Estate, Loans and Rentals  
**Insurance**

Wead Bldg., 310 S. 18th St., Omaha, Neb.

*Telephone AT. 0151*

*Webster 1795*

*Webster 4746*

Plants, Cut Flowers  
Designs and Decorations

**CHAS. EDERER**  
Florist

30th and Bristol Streets              Omaha, Neb.

---

L. FRUMKIN

Fine Tailoring and Dry  
Cleaning

3709 North 24th Street

*"The University's Tailor and Dry  
Cleaner"*

THE BOARD OF TRUSTEES  
of the  
UNIVERSITY OF OMAHA

Congratulate the Student Body upon their  
1927 GATEWAY

and in token of their appreciation have taken this page advertisement as a  
means of assisting in the publication of this book.

*Board of Trustees*

- |  |  |
|--|--|
| W. F. BAXTER<br>Thomas Kilpatrick                    | A. A. LAMOREAUX<br>418 Peters Trust Building             |
| C. W. BLACK<br>Malvern, Iowa                         | DR. J. P. LORD<br>482 Aquila Court                       |
| DR. W. F. CALLFAS<br>1620 Medical Arts Building      | DR. H. M. McCLANAHAN<br>1614 Medical Arts Building       |
| M. B. COPELAND<br>M. A. Disbrow & Co.                | R. A. McEACHRON<br>Occidental Building & Loan Assn.      |
| J. E. DAVIDSON<br>Nebraska Power Co.                 | D. W. MERROW<br>Attorney, 418 Peters Trust Building      |
| N. P. DODGE<br>N. P. Dodge & Co.                     | HUGH MYERS<br>Attorney, 220 Brandeis Theatre Bldg.       |
| A. N. EATON<br>Nebraska and Iowa Steel Tank Co.      | C. LOUIS MEYER<br>Concrete Engineering Co.               |
| DR. PALMER FINDLEY<br>428 Aquila Court               | ARTHUR L. PALMER<br>Attorney, 1010 Omaha Nat. Bank Bldg. |
| A. W. GORDON<br>Gordon Candy Co.                     | R. S. ROBERTSON<br>Duluth, Wisconsin                     |
| W. A. GORDON<br>Fireproof Van and Storage Co.        | DR. W. L. SHEARER<br>1226 Medical Arts Bpilding          |
| W. T. GRAHAM<br>Real Estate and Loans                | ARTHUR C. THOMSEN, Attorney<br>Thomsen-Mossman-Standeven |
| DR. A. F. JONAS<br>612 Omaha Loan and Building Assn. | DR. J. H. VANCE<br>314 Brandeis Theatre Building         |
| MRS. A. F. JONAS                                     | C. VINCENT<br>406 Grain Exchange Building                |
| MRS. SARAH JOSLYN                                    | MRS. C. VINCENT  |
| HENRY KIESER<br>221 North Sixteenth Street           | ALICE R. WARE  |
| HOWARD KENNEDY<br>Peters Trust Building              |  |



## GREEK GUIDE

### *Sig Chis:*

The Sig Chis, along with the Kappas, don't know that United States is a democracy. This common bond makes the two sororities good friends on parties and bitter enemies during Rush Week.

The girls used to choose their pledges, for their cars, their social status, or their fur coats, but just what is their standard, anyhow, if any? Would you believe it, in the last bunch of freshmen there was not a single fur coat. One of them is fairly famous for a good disposition, but then that's no qualification for a sorority girl.

They pledged one good girl—cute, democratic and jolly, but her Big Thrill, wise in the ways of wimmin (and *isn't* he?) influenced her to break her pledge. Looks pretty bad when two sisters in the sorority can't get the third one to join.

One of the Sig Chi freshmen has told as a dead secret to not more than three hundred people that she has been offered three fraternity pins this year. If she has, it's a good thing, because she'll make up for a few of her slower sisters. One of these pins, goes the rumor, was a Phi Sig pin; one a De Molay emblem, and the other from Grinnell or one of the other schools that fellow was kicked out of—he's now doin' his flunking with us.

When it comes to real, true, cats, the Sig Chis can't be beat. That proves they have the real sorority spirit. Last fall they rushed a girl and spiked her—the Sig Chis break all the rushing rules—they have to!

Then they dropped her flat. They did their concerted best, with meows and ladylike little scratches, to blast the girl's reputation. During the year, however, the girl went over fairly well in spite of the fact that she wasn't wearing the arrow so the Sig Chis put their claws away in their nice, soft paws, and pledged her!

The Sig Chis play good bridge, and they dance well, and they've always been quite famous for their necking, but the way some of the girls lose the pins they get, looks like faulty technique somewhere. We'd advise a thorough course in Elinor Glyn with a few of Mae Murray's movies thrown in.

### *Phi Sigs:*

Phi Sigs used to be good dressers, good dancers, and conceited. Now they're not even conceited. They're losing their "type" alarmingly fast, and the older members are beginning to realize it. In fact, we've heard part of the members characterize the other part as "a flock of jackasses and complete wash-outs on a party." (The wash-outs are the ones not carried out.)

About four or five of the men they pledged this year, if carefully superintended as to clothes and dates, will make good Phi Sigs according to the old standards—the rest of them look pretty hopeless.

One thing we will hand to the Phi Sigs—they give lots of parties. They may not know much about bridge, but their fathers are generous. We'll except one sophomore who almost gets hysterical when





he has to part with a dollar.

All you have to do to get a Phi Sig pin (if you want one—and who would?) is to have a house date with the lad, and if your line's any good, he'll force his pin on you, swearing you're the only girl he ever loved. You probably *are* the only girl he's loved—that week. Phi Sigs fall in love hard and often, and confound the boys, they do make you believe them!

A Phi Sig is never a bright and shining light in class—they're a lot smarter at night than in the day time.

Thetas may be reckless at giving out pledge pins, but it's the Phi Sigs who are careless about giving out fraternity pins. Last year they pledged a man named G - - - we'll call him that so as not to embarrass anyone, and anyway his name starts with that—and at initiation they fastened a nice new emblem on him—and never saw him again. It about broke the treasurer's heart!

Phi Sigs are always talking about how much hard liquor they can hold. In fact, next to talking about themselves, they most love to drop phrases like "everybody else passed out—and there I sat with a quart of straight whiskey under my belt, sober as a judge!" We hate to tell you about it, because the Phi Sigs do like to be considered regular little devils, but there's not more than one man in the fraternity who can hold more than a tumbler of wine, and stay awake.

#### *Gamma Sigs:*

The dear old Gamma Sigs! Still around and beginning to be noticed. The Gamma Sigs started out with such hoplessly nice girls, no

one ever heard a word about them. Do you know what happened this year? Two of them got pins! You know and I know that Red Riding Hood had to eat—and also that it takes a mighty artistic necker to get a pin! Neither of the gentlemen in particular preferred blondes although one of the girls preferred a man with a haircut like a pugilist. However, any man who looks like he does in a basketball suit doesn't need to worry about his hair. His is a form a sculptor would rave over—and so do the girls in the stand!

And, believe it or not, it was a Gamma Sig who got so much publicity over a tea party. Only the little rascals weren't drinking tea! We always thought the girls would not know a highball from a baseball, but now we know they're smarter than they look.

The sorority got good grades this year—they'll get over that. Most of them now still have the idea that one comes to college to get good grades—fancy such simplicity!

Gamma Sigs are conspicuous only by their absence at parties—any they talk a lot about their "formals" because most of them are just finding out what one is. But of course, if they don't show up at parties it's probably because their mothers don't like to have them out at night—Yeh!

#### *Alpha Sigs:*

Where, oh, where is the Alpha Sig scholarship cup? The boys should have hung onto that. That was their one way of being distinctive.

The fraternity, like a caterpillar, is going through a metamorphosis



and we think that within a year or two, they'll evolve into social butterflies like the other fraternities. For long years the Alpha Sigs were quite out of all social life of the school. They neither smoked, necked, drank, or said damn. They were too good to be true—or to last. But times have changed. They got in some good-looking boys who were something besides chemistry and one of them in particular, began to be famous for his loud and ultra-collegiate clothes. This lad is going to be married this summer, and also going to be a minister—we can't reconcile either thing with his ties. WILL he lead the brethren in singing number 302 in a violently blue and orange sweater?

The Alpha Sigs so far came out of their trance this year to sling a costume party—and they all had dates too! A few of the girls who know, say if one would have a good time, one Wood. Wood is rather typical—he gets all fussed, supposedly, then tears off a remark that is repeated for years. Any man who can get the better of Dr. Vartanian, deserves to have his name mentioned here and in "Who's Who" besides.

See the nice amount of space we devoted to Carl? That was just a little gift to make him happy when he leaves school. He loves publicity, no matter what kind, better than anything in the world, and it rather gets his fraternity brothers down. Maybe that's why he never is asked on any of the famous beer parties the Alpha Sigs have—introduced, someone said, by the new president of the Pan-Hellenic Council!

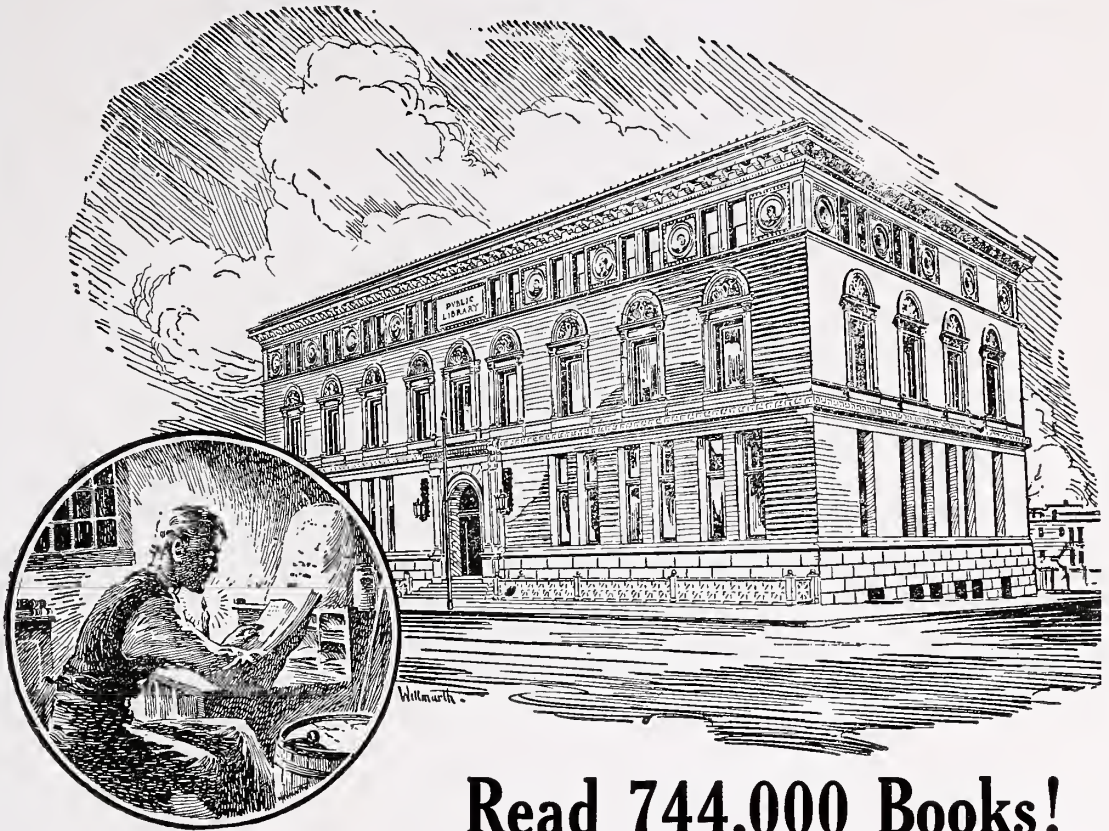
### *Pi-O:*

Pi-O's are really beginning to be seen places—after all these years. They did a clever thing in picking a president with a fraternity pin and who knows how to hang onto it. Besides this, Betty has the sweet and unaffected (?) attitude that usually betrays real art as far as the lads are concerned.

And another one of them—we'll describe her as Miss Gould did one day. She said, "Where's Miss—? She's wherever that big tall boy is." As Benny Potts says, which she is. She's the kind of a girl to have. To begin with, she's original. What other sorority girl has done a dance of spring for her sisters, clad only in a bawth towel? What other girl has—when her fella is too broke to buy a fraternity pin, hung her pin on him? Of course, it isn't being done, but that never bothers a Pi-O.

Somehow or other, this bunch dragged down one of the best girls in school this year. She wears a Phi Gamm pin, and has cut-ins at parties, so you can see she never should have gone Pi-O.

About three years ago, this sorority broke into print announcing to the world that they were answering an S. O. S. call and pledging so much to the University fund. Since then they've done nothing of note, and we wonder if they're meeting their payments cheerfully. Perhaps this grandstand play in the newspapers explains why they never give any parties. But then of course, when one gives a party, one has to have a date and that makes it hard, doesn't it girls?



## Read 744,000 Books!

More than 744,000 books were taken for home use from the public library here during 1926, smashing to bits all previous records.

In 1883, when the library was located on the second floor of a building at Fifteenth and Douglas streets, there were only 4,000 books available. It was the day of flickering candle light and the oil lamp.

With the arrival of electric illumina-

tion, reading was made easy and as a result the reading public increased greatly in size.

The cost of electric illumination for reading is but a trifle because of Omaha's exceptionally low rate. To burn an electric lamp, correctly for reading, for 7 hours costs you only a penny.

Omaha has one of the lowest electric light rates in America.

Omaha Is a Great Place in Which to Live  
**Nebraska Power Company**

*Courtesy—Service—Low Rates*





### *Phi Delt:*

The Phi Delt's this year, seem to have developed two distinct types. We won't go so far as to characterize the two, but we will suggest that if Thyra and Luree and Lorraine and a few of their sort would give some of the freshmen lessons in "If you are well-bred" it would help a lot.

Last year the Phi Delt's captured the scholarship cup, and this year they were at the tag-end of the list. This proves either that they are dating more, and have less time to study, or that they pledged some dumb freshmen—or maybe both.

For some reason or other, the Phi Delt's and Sig Chis have been remarkably clubby lately. Touching bits of affection like wearing each others' coats, and copying each others' quizzes—you know. We're betting it won't last long. When two cats get together they get along all right until they both want the same pan of milk—or the same place as Gala Day maid.

The sorority is getting sophisticated too fast. Some of the members are positively ultra. One night at a party a Phi Sig missed his date (a Phi Sig is always missing something). So he shouted "Dorothy! Dorothy!" until she suddenly appeared "out of the dusk" with another Phi Sig. The first Phi Sig, who is a conventional soul severely addressed the young lady, who was nonchalantly combing her hair, saying, 'Anyone would think from the looks of things that you had been necking.' Like Kipling's "Elephant Child" the Phi Delt was "a little warm, but not at all embarrassed" and she

answered airily, "Perhaps I was!"

It's never hard to find a Phi Delt at a party—they always make for secluded nooks or enclosed cars even before intermission — smart girls realize they look better in the dark.

### *Kappa:*

Once upon a time, about two weeks ago, a simple little barb from over in Iowa, said, "It must be dreadful to be a Kappa. You never can speak to a soul outside of your own sorority." And the Kappa answered sincerely, "Why should we? All the good girls at school are Kappas so why bother with the plebes?" There you have the Kappa attitude in a nutshell—sweet, modest, democratic.

This sorority had a lot of Seniors this year, and 'tis said they get along with the admirable felicity of five wildcats. The Knock-out Meeting this year, instead of being free-for-alls as of yore, resolved themselves into being two-round bouts for the Seniors!

Kappa rushing methods are easy. First they find out if she has one or more cars and if she can drive. Then they watch her at a party—if she has a flock of cut-ins she has passed the second test. Lastly, they examine her bridge—if she plays well, new rules, they know she's a wonderful girl, and accordingly pledge her. One girl almost made the grade last year, until the scandalized actives discovered she still thought a one-club bid indicated a no-trump, and they turned her down flat.

The Kappa elections remind us of a story we once read. The animals were going to choose a king,

# UNIVERSITY LUNCH

LIGHT LUNCHES

SHORT ORDERS

ICE CREAM

"Follow the Crowd"

We Have What You Want--The Best Food Cooked in  
True Home Style

3715 North Twenty-fourth Street

Phone Webster 2157

**SAVE**

your youthful earnings if you desire a pleasant OLD AGE

*Assets Over \$35,000,000.00*

**OMAHA  
LOAN and BUILDING  
ASSOCIATION**

*Omaha's Oldest Saving Institution*

Fifteenth and Dodge Streets

*Compliments of*

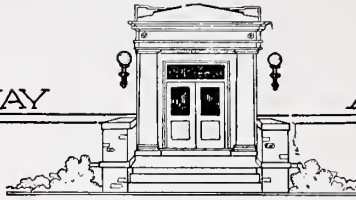
**E. P. BOYER  
LUMBER and COAL  
COMPANY**

48th and Leavenworth Streets

*Phone WA. 2955*

24th and Boyd Streets

*Phone KE. 3400*



so one the appointed day they all assembled—the lion, the elephant, the monkey, the zebra, the deer—oh, go to the zoo yourself. Each voted for the king, and when they came to count the votes, they found that each animal there had voted for himself. The Kappas likewise. They have a terrible time electing officers because the girls are always nominating, and voting for themselves. It shows SUCH an unselfish disposition, doesn't it?

The Kappas love a man for himself alone—if he has clever clothes, a big car, a good-looking fraternity pin—and dances well. And they weren't at all concerned over their low scholastic standing—just so long as they keep up to their quota of fur coats (pony coats not counted).

Don't ever hang a pin on a Kappa. She'll either keep you in hot water all the time by returning it at least once every week; or, she'll refuse to wear it at all, and tell you she wears it at night on her pajamas because that's so much more romantic, isn't it, dahling? There are two Kappas who really wear pins and are proud of them—how two girls with any degree of sincerity ever went Kappa just goes to show than anything can happen.

*Theta:*

Put a Theta in an arena with a ferocious lion and he wouldn't bat an eyelash. Anyone who has experienced a Theta meeting would find a gladiatorial combat tame in comparison. There are two distinct factions and we wouldn't be a bit surprised to see them break into two separate fraternities some time—with a tall, slim athletic cap-

tain, who is all for Many Parties and Dirty Politics, as president of one, and a not-so-slim, not-so-athletic Phi Delt booster as president of the other. Wasn't it a beautiful example of brotherly love when we elected a Gala Day chairman to have each faction put up a man? It may have been smart at that—any way you figure, a Theta was running it—and these Thetas certainly are politicians.

Their president this year was president of half the other organizations in school and if you don't think he takes a good picture don't buy an Annual, because the book is full of him. (They say the vivacious brunette is buying four year books!) Oh, yes, and the Thetas had the basketball captain this year, president of the Pan-Hellenic Council, chairman of Gala Day, —but no members on the Student Council.

The Thetas are great on hanging pins. They all hang their pins two or three times a year, so you see it means a lot. There are Theta pins on everything at school—Gamma Sigs, Phi Deltas, Pi-O's and Sig Chi's—Kappas don't go in for pins, they say it cuts one's date list down. Some of the Thetas don't even stick to sorority girls but you can't expect much else when there's a Nurse's Home so near. Anyway, none of the Thetas have any undemocratic ideas on Social Distinctions.

The Thetas had the best all-around man this year. He's around all right—but not with many of his fraternity brothers. He loves wine, women and song, but if you omitted the music and liquor he'd never miss them.



The Store of  
*Thomas Kilpatrick Co*  
Established in 1870

# Clothes

—that's our business

We have discovered by long experience that it pays,  
in our selections, that

**We Stress Quality**

There's a style and refinement about our garments that  
distinguishes them, and

**The Price Is No Higher**

*Dresses Coats Hats Shoes*  
*Hose Lingerie Gloves*  
*Kerchiefs Handbags Toiletries*



## HOLMES RECREATION

GRILL  
BARBER SHOP  
BILLIARDS  
FOUNTAIN  
SHINING PARLOR

Sixteenth and Farnam Streets

IT IS A PLEASURE TO  
DO BUSINESS WITH  
PLEASANT PEOPLE....

This is the kind of atmosphere  
you will find among the em-  
ployes of the

**Peters National Bank**  
and  
**Peters Trust Company**

## JOHANSON DRUG CO.

*"University Drug Store"*

Graduate Pharmacist

STATIONERY                      CAMERAS  
PHOTO SUPPLIES

24th and Spaulding                      Webster 0942

## Hat Cleaning and Blocking

*Ladies' Hats a Specialty*

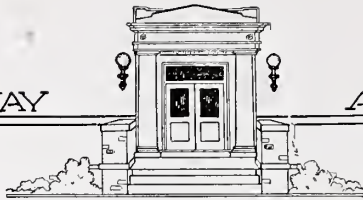
**Expert SHOE REPAIRING**

We Use Only Highest Grade Leathers,  
Applied by Skilled Workmen, with  
Modern Machinery

**MASTOS BROS.**

*Just Around the Corner  
From 16th and Harney*

Jackson 1261                      1520 Harney Street



## HOT SKETCHES

### A MAD MIX-UP

When Schneider was a bellhop  
Down in the Rome Hotel,  
And Homer was a traffic cop  
On a corner as busy as Hell,  
A drama was enacted here,  
Which strange as it may seem  
Had actors, which as they appear  
You'll see are full of steam.  
First came Maxine, the Foshier kid,  
A-dashing down the street,  
Waving around a Kappa bid,  
She's sweating full of heat.  
And after her came Prather, Ben,  
About himself, still shouting,  
A rooster chasing a "cocky" hen,  
Both getting a little outing.  
Ah, next appeared a long, low shelf,  
'Twas carried by three maids,  
And on it lay H. Wolfe himself,  
A victim of female raids.  
Then in a car a-whizzing by,  
A goodly sight was seen,  
P. Ham and Bob were heard to cry,  
"Gertrude, Gertrude Jones for  
queen."  
And now more trouble seems to  
come  
Right out from the city hall,  
Elwood yelled "Ye gods, you're  
dumb,"  
As Addean slipped to fall.  
But hark, what noises from the  
court,  
Where Barbs and Greeks from the  
U. of O.  
Were trying to cut each other  
short,  
In deciding which to jail should go.  
At last the Dean in a mighty voice  
Cried out no sentence should be  
passed,  
He said there was no other choice,

No dirty votes would there be cast,  
For now the politics would be  
clean  
After the treaty of peace was  
signed.  
The studes whispered softly, "Gee  
he's green,"  
We'll always be the fighting kind."  
Meanwhile Rosen on the side  
Was looking very sad,  
In fact his eyes he tried to hide.  
No girl would have him for her  
dad.  
He felt much worse when he saw  
that Jane,  
Was standing near the coach,  
Both were safe and both were sane  
A subject no one dared to broach.  
Ah, into our view, glistening like  
pearls,  
A light Nash roadster then shot  
past,  
A Spaniard drove a bunch of girls,  
We'll tell the world the're going  
fast!  
A street car full of pep rolled on  
Filled with Omaha Uni masses,  
'Twas early morning just at dawn,  
They've got to get to classes.  
But when they got there they dis-  
covered,  
Classes would not meet that day,  
The reason of this was then un-  
covered  
The faculty had met and had a  
fray.

— *Finis* —

### JARRING THE TROTTERS

"Do you know Adolph, the  
butcher boy? Well, he just drop-  
ped sixty feet."  
"Sixty feet! Did it kill him?"  
"No, they were pigs' feet."

# Vincent Grain Company

OMAHA, U. S. A.

Receivers — **GRAIN** — Shippers

*Your prosperity is our chief concern. We leave nothing undone that is calculated to increase your profits on business consigned to us.*

C. Vincent

E. G. Taylor

F. Sorensen

C. N. Ogden

## VAN SANT SCHOOL of BUSINESS

In Its Thirty-sixth Year

Co-Educational

Day and Evening Schools

Founded and maintained in the interests of young men, women and girls who seek interesting and profitable employment.

Those who are trained in necessary skills and educated in fundamentals of business procedure find themselves welcomed and rewarded in the wage-earning world to the exact degree of their proficiency.

The VAN SANT BULLETIN outlines complete courses for those who have graduated from University, and summer courses for under-graduates desirous of using their vacations to advantage. Ask for it.

**IONE C. DUFFY, Owner**

205 S. 19th Street

Omaha, Nebraska

Day, Ja. 5890; Evening, Wa. 4298

## We Will Be Glad to Serve You in Any School Supply Need

Textbooks of All Publishers—Students'  
Supplies—Art Materials—Wholesale  
Prices

Publishers of "The True Blue Song Book"



Contains a collection of carefully selected old and new favorite songs. All songs are especially practical for school use, community singing, Parent-Teachers' meetings, etc. As a special feature in this book, ten pages are devoted to the explaining of the rudiments of Music, written in such a form that anyone may readily understand the method of teaching music. A book no teacher can afford to be without.

Price:  
Per Dozen - - - - - \$1.80  
Single Copies - - - - - .20  
Single Copies, Postpaid - - .25

## OMAHA SCHOOL SUPPLY CO.

"Everything for Schools"

Omaha, Nebraska



## DID YOU BUY YOUR ANNUAL?

It's not too late. There are a few left. Show your picture to your grandchildren. Keep a record of your College days at Omaha U.



*Order Your Annual  
from*

HOMER SCHLEH  
1611 N. 35th Wa. 5668

FRITZ NELSON  
4012 Izard St. Wa. 3295

*"Omaha's Most Popular  
Confectionery"*

## THE ARISTO

California and Thirty-third Streets

---

### We Paint Your Car

\$40 . . . TWO COLORS  
\$30 . . . ONE COLOR  
\$25 . . . FORDS 1927 Finish \$5 Extra  
GENUINE LACQUER FINISH IN 24 OR 48  
HOURS

Our fine Lacquer Finish is impervious to sunshine and rain; to freezing, boiling water, oil, gasoline, battery fluid, dust or mud. In fact, through all the usual agencies which shorten the life of an ordinary finish. Lacquer actually grows brighter and more lustrous with age if only given ordinary care.

### Roberts-Dunbar Co.

DEHCO Auto Enameling  
4225 North 20th St. Kenwood 1133

## ATHLETIC SUPPLIES

*for*

Colleges and Universities

*Buy in Omaha*

### Russell Sporting Goods Co.

1816 Farnam St., Omaha, Nebraska

*Compliments of*

### The D. C. Hutchinson Co.

*Established 1885*

### Real Estate and Insurance

1623 Farnam Street

---

## STANDARD BAKERIES

(Jay Burns Plant)

BAKERS of

### Merit and Betsy Ross Bread

Hostess Cakes

Twentieth and Cuming Streets

---

### North Star Sweet Shop

Complete Line of FOUNTAIN SERVICE  
*Home Made Candies, Delicious  
Sandwiches, Fancy Salads*

After the Show or Dance take your "Date"  
to the

### North Star Sweet Shop

Right Off the Lobby of the North Star  
Theatre

2415 Ames Avenue

Kenwood 0709

WHEN YOU NEED

# P A I N T

Pioneer Glass & Paint Co.

NEED YOU

## Concrete Engineering Co.

*Manufacturers, Fabricators,  
Distributors of*

### Ceco Steel Products

*for*

Reinforced Concrete and Fireproof Con-  
struction

CECO STEEL AND WIRE CO.

and

CECO METAL WEATHERSTRIP CO.

*Divisions of*

CONCRETE ENGINEERING CO.

*Manufacturers, Fabricators,  
Distributors of*

Fence, Fence Posts, Nails, Barbed and  
Smooth Wire, Corrugated and Flat  
Sheets, Sheet Metal Products,  
Weatherstrips and Screens

1141 North 11th St. Phone JA. 5686  
Omaha, Nebraska



A refreshment that is very  
acceptable at parties or  
any social occasions

*There is a Fairmont dealer in your  
neighborhood who will be pleased to  
supply you with ICE CREAM in  
your favorite flavor, and in any  
quantity.*

THE  
FAIRMONT  
Creamery Company

U. S. A.

Established 1884

Delicia Ice Cream



## SHOD-SLIP

It is world-time over the spring,  
The birds are blooming in the air,  
The snow-slips slinging under the  
cow.

The woolens are shedding their  
men,  
As the new bombs hat like a burst.

It is crew-time for the race,  
The shells are seated in the boys,  
Ready to arrow off like a shoot,  
The crowd of the shouts is heard,  
Water as a clear on the bell.

It is track-time for the meet-team.  
Winds will whirr into their legs,  
Blue-vaulters swinging into the  
pole.  
The start-shot cracks for the  
pistol;  
They will die the win or meet.

There was a great storm through  
the Middle West. An important  
newspaper was caught with no ex-  
perienced reporter in the office, so  
with many misgivings the editor  
sent a young cub to cover it. The  
cub reporter arrived all smiles;  
but the task was not so easy. The  
storm was still at full blast and he  
would have to wait for the more  
important details, he thought. He  
wired the office: "The storm still  
rages, taking heavy toll waste and  
devastation on every hand, God  
stands idly by and watches." He  
received an immediate answer:  
"Disregard storm get interview  
with God and photograph if pos-  
sible."

Hugo's Small Brother: Mother  
said I was to call you.

Big Brother Hugo (sleepily):  
Three aces. What you got?

Little Tobin: Why do you want  
to stay and see the death-defying  
death whirl? A guy just hangs by  
his teeth and whirls around.

Wise Old Gentleman: I always  
wait, son. The rope might break  
you know, and if I could see one  
acrobat killed I could die happy.

Doorman (to gentleman trying  
to crash a dance): And who is the  
fellow you want to see inside?  
Gentleman: Me.

Prima: Don't you hate crowds?  
Donna: Do I? At the last foot-  
ball game I fainted and had to walk  
three miles before I could fall  
down.

"Look at Mabel's dress."  
"I can't see it. Some fellow has  
his arm around her."

Gay: Darling, what did you do  
with those narcissus bulbs?

Marie: Why, Honey, I am so  
sorry, but I thought they were oni-  
ons and you ate the last one yes-  
terday.

"William," demanded his teacher,  
"Why didn't you get your father  
to sign your report card, as I told  
you?"

"Couldn't do it, ma'am," Willie  
replied. "He ain't been home since  
ma caught Santa Claus kissing the  
hired girl."

She: Buy a seal for the benefit  
of the Red Cross?

Pete: Very worthy organization;  
but I cannot afford a seal.

She: Buy just one seal, please.

Pete: If I bought it I couldn't  
feed it.



THE GATEWAY  
IS A PRODUCT OF  
OUR PLANT

WE ARE PROUD  
OF IT!



WATERS-BARNHART PRINTING CO.  
"THE BARNHART PRESS"  
414-18 SOUTH THIRTEENTH STREET  
O M A H A



## NO PUNCTURES

"Do you know any way to avoid tire trouble?"

"You might buy a motor-boat."

## CALLED ANYWAY

Weep and you're called a baby,  
 Laugh and you're called a fool,  
 Yield and you're called a coward,  
 Kick and you're called a mule.  
 Smile and they'll call you silly,  
 Frown and they'll call you gruff,  
 Put on a front like a millionaire  
 And somebody calls your bluff.

## MISTAKEN

Little Boy: "Look, Ma, the circus has come to town; there's one of the clowns."

Ma: "Hush, darling. That's not a clown. That's just a college man."

## WELCOME DEATH

"Throw up your hands, I'm going to shoot you."

"What for?"

"I always said if I ever met a man homlier than I, I'd kill him."

"Am I homlier than you?"

"You certainly are."

"Well, then, go ahead and shoot."

## KNEW THE PICTURE

A patient teacher was trying to show the small boy how to read with expression. "Where - are - you - going?" read Johnny, laboriously, with no accent whatever. "Try that again," said the teacher. "Read as if you were talking. Notice that mark at the end." Johnny studied the interrogation mark a moment, and an idea seemed to dawn upon him. Then he read triumphantly: "Where are you going, little button hook?"

## DOWN AND OUT

Jeffrey: "So your son has been injured and is coming home from college?"

Briggs: "Yes, he sprained his ukelele finger."

Tom: That your girl you had at the dance?

Moeller: Yes.

Tom: Smoke?

Moeller: No, she's sunburnt

## CONVINCING HIMSELF

Two backwoodsmen in Maine knocked at the door of a house at the edge of the forest. "Hello, Ed!" said one of them to the farmer who came to the door. "Say, we come across the dead body of a man over there in the hollow an' we kinda thought 'twas you."

"That so? What'd he look like?" asked the farmer.

"Well, he was about your build—"

"Have on a gray flannel shirt?"

"Yep."

"Boots?"

"Yep."

"Was they knee boots or hip boots?"

"Let's see. Which was they, Charley, knee boots or hip boots? Oh, yes, they was hip boots."

"Nope," said the farmer. "It wasn't me."

How's your nose?

Oh, shut up.

So's mine; must be the cold weather. —Gargoyle.

Bradfield: Miss Marks, name the presidents.

Thelma: Sorry, teacher, but their parents beat me to it.

*"Everything in Dependable  
Woodwork"*

Sash, Doors, Storm Windows, Combination  
Doors, Window Screens, Mouldings,  
Cabinets and Breakfast Nooks

## IMPERIAL SASH & DOOR CO.

20th and Ames Avenue

## BAKER SYSTEM REFRIGERATION

Used for Water Cooling, Cold Storage,  
Creameries, Dairies, Markets and wher-  
ever there is need for Commercial Re-  
frigerators.

**Baker Ice Machine Co., Inc.**  
Omaha, Nebraska

## The LIGHT-HOUSE AND BALL ROOM



On the Boulevard—One-Half Block South of Ames Ave.

ORIGINAL — UNIQUE  
A Real Place for Club  
Dances

Refreshments and Lunches  
Served

*Book Your Dates Now for  
Future Parties*

**The LIGHT-HOUSE**  
Phone Kenwood 4114  
4410-10 Florence Boulevard

## ATHLETIC SUPPLIES

Baseball—Golf—Tennis  
Bathing Suits

*Special Prices to Schools*



**TOWNSEND**  
**Sporting Goods Company**

1309 Farnam Street

## SYSTEMATIC SAVING

Money is an absolutely tireless worker,  
and if conserved will eventually produce  
enough to care for you in adversity or  
old age.

Open a savings account with us (by mail  
if more convenient) and save *Systemati-  
cally*. Your account will be increased by  
the addition of semi-annual dividends.

*Take care of your money and some day it  
will take care of you.*

**The CONSERVATIVE**  
SAVINGS and LOAN ASSOCIATION

1614 Harney Street, Omaha





#### AN INSECT TRAGEDY

"What has become of your brother?" inquired a friendly mosquito.

"He met a terrible fate," answered the other. "Those human beings poured kerosene all over the place."

"But he liked kerosene."

"Yes, that was the trouble. He gorged himself with it and then collided with a lightning bug."

#### A NICE DISTINCTION

Sam: "Do yuh refuse to pay me dat two dollahs Ah lent you?"

Rastus: "Oh, no, sah. Ah don't refuse, Ah just refrains."

Soph: "What would a cannibal be who ate his mother's sister?"

Frosh: "I'll bite on that; what?"

Soph: "An aunt-eater, of course."

#### WHO'S HIS DENTIST

When he leaped from the window he had part of a loaf of bread, but this lasted one day. A broken water pipe furnished the rest of his diet.  
—*Arkansas Paper.*

#### SUSPICIOUS

Little Bobbie: "Mother, have I been a good boy lately?"

Mother: "Yes, dear, a very good boy."

Bobbie: "And do your trust me, Mother?"

Mother: "Why, of course, Mother trusts you, son."

Bobbie: "Then why do you go on hiding the jam?"

"There are only five things in this world that I want. And you can give them to me."

"Ah, and what are they?"

"Five dollahs."

#### A LINE THAT MOVES

"Customers push my goods for me," said the manufacturer.

"What line are you in, anyway?" asked the hardware jobber.

"Baby carriages," was the reply.

A green pair, not an apple, caused all the trouble in the Garden of Eden.

#### SERVED 'EM RIGHT

"Did you know that the bicyclists at the theatre this week have been arrested?"

"Mmmmmm, what for?"

"Pedaling without a license."

#### HERE'S A PIPPIN

How many apples did Adam and Eve eat?

Some say Eve 8 and Adam 2, a total of 10. We figure it thusly—Eve ate eight and Adam eight also, a total of 16.

Those with a fruity line say—"If Eve ate eight and Adam eight too (82) the total is 90. The grafters figure it this way—Eve 81 and Adam 82—total 163.

The vegetarians say if Eve 81 and Adam 812, the total is 893.

Ever try to count the seeds in a watermelon? Eve 814 Adam and Adam 81242 oblige Eve, so they 82,056 apples.

#### PREVENTION

Captain: "What is the best method to prevent the disease caused by biting insects?"

Corporal: "Don't bite the insects."

The Peach would not Date with the Prune, and handed a Lemon he went Plum crazy.

# The Brinn & Jensen Co.

1108-10-12 Harney Street

Omaha, Nebraska

## "PAPER SPECIALISTS"

In addition to a complete stock of Wrapping Paper, Bags, Twine, Stationery, Notions, School Supplies, etc., we carry

Party Hats

Confetti

Balloons

Noisemakers

Serpentine

Tally Cards

Place Cards

Nut Cups

Exhibition Fireworks Assortments - - \$25.00 to \$1,000.00

## PLATNER LUMBER COMPANY

Lumber  
Millwork, Cement Blocks  
Radiant Coal  
Sewer Pipe and Building  
Material

Main Office, 24th and Boyd Streets

Branch Offices

46th and Farnam—72nd and Pacific

Phone *KE*nwood 5811

HELLO! I'M FINE

On time every time  
when you serve

**Butter-Nut**  
The Coffee

Delicious

PAXTON & GALLAGHER CO.

15

# UNI PHARMACY

THE HANDY DRUG STORE

*for*

SODAS AND SUNDAES

HOT and COLD LUNCHES

DRUGS AND SUNDRIES

FRESH STOCK of CANDY  
the Year Round

FREE DELIVERY  
SERVICE

Tel. WE-3438

24th and Pratt

IS THIS  
YOUR ANNUAL?



If not, you should order one.  
There are a few extras. En-  
close a check for \$2.25, or  
order a copy from

HOMER SCHLEH  
1611 North 35th Wa. 5668

FRITZ NELSON  
4012 Izard St. Wa. 3295

WEDGWOOD  
CREAMERY  
BUTTER

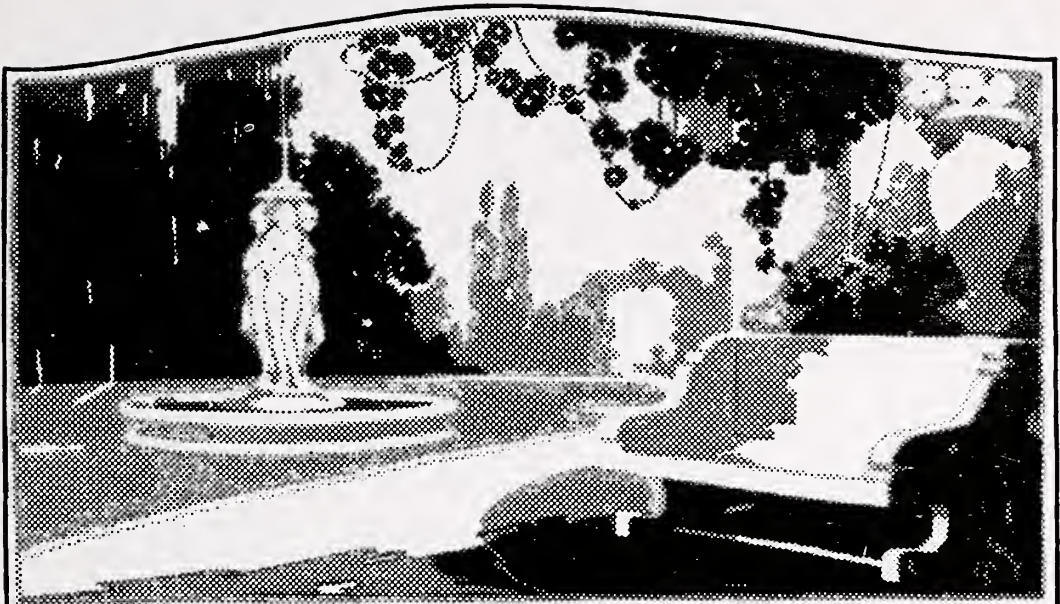
Churned Daily

*for*

HEALTH—VIGOR—PEP

**Harding's**  
*The Cream of All*  
**Ice Cream**





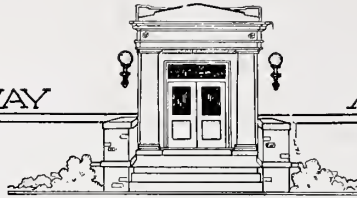
Scenes and events are pictured and typed in this annual to perpetuate the memory of school days.

We are happy to lend our assistance in supplying the engravings whereby the story is made more interesting and complete.

**BAKER BROS. ENGRAVING CO.**

1122 HARNEY STREET

OMAHA, NEBRASKA



### A FRUITFUL TIME

Making Dates.  
Forming Pairs.  
Kissing Peaches.

### TIMES HAVE CHANGED

"The cowboys in Texas do not catch steers on horseback any more."

"And why don't they?"

"Because steers do not ride horseback."

Two bachelor girls of somewhat advanced years were discussing the approaching holidays.

"Josie," said one, "Do you think a stocking would hold all you'd like to get for Christmas?"

"No, Min," she sighed, "but I think a pair of socks would."

Pretty Thing (lost in the big city): Oh, sir—won't you—won't you take me home?

Whitehouse: Madam, I'd love to—but I can't. I live at the Y. M. C. A.

Miss Gould: Use the word embrace in a sentence.

Ben P.: May I embrace you?

Miss Gould: I want to see you after school.

"Last night I played poker with my wife."

"Which won?"

"Say, how many wives do you think I have?"

Voice Over Phone: Is this the lady who washes?

Dot R.: Indeed! I should say not!

Voice Over Phone: Why, you dirty thing.

### DEFINITION OF A VEGETARIAN

A dead "beat" with a cauliflower ear.

"Hello! Mary F.?"

"Yes."

"This is Bob. Are you busy this evening?"

"No, I'm not, Bob."

"Well, I am. Stick around and someone might call you up for a date."

"Look at the big pumps that that woman has on."

"She needs them. Look at the wet smack she's with."

"And why, Roderick, did you kiss that little Eyetalian girl?"

"You said, papa, I should never let a dago by without I learned something new."

Hugo: Something seems to be wrong with this engine, it—

Ellen Annie: Don't talk foolish, wait until we get off this main road.

"Why do cigarettes have Oriental names?"

"Because they have good shapes and thin wrappers."

"Did you see the movies about the flood?"

"Ye-ah—wasn't it an awful wash-out."

First Strike Breaker: Look out for that guy.

Second Strike Breaker: Why? He's on our side.

First Strike Breaker: Naw, he wears a union suit.

"Printing that Pleases"



AMERICAN PRINTING  
COMPANY

R. H. Heywood, *Proprietor*



*Phone Jackson 4253*

2111 Cuming Street      Omaha, Nebraska

The

**Virginia**

Up-to-Date  
RESTAURANT

The Most Popular Cafe  
in Omaha

1413 Douglas

KEEP CLEAN

**Omaha Towel Supply Co.**

Furnishers of Sterilized Linen of Every Description  
for Offices, Stores and Business Houses

209 South 11th Street

Tel. JA. 0528

Omaha, Nebraska

**ROBERTS SANITARY DAIRY**

PASTEURIZED MILK AND CREAM

Our Products and Service Will Please You

HARNEY 2226



# JOIN THE BUTTER LEGION

Enjoy good health, vitality, physical endurance, mental alertness, and resistance to disease by including in the daily diet, butter, fresh vegetables and fruits.

If your diet is deficient in any one necessary vitamine you will feel a lack of vitality, a mental sluggishness and be unable to do your best work.

With butter, fruits and greens you will get all the vitamins necessary to sustain life.

## Join The Butter Legion

DAIRY INDUSTRIES OF OMAHA AND COUNCIL BLUFFS

When Building a Home

See

**A. C. FRANKLIN**  
Realtor

Kenwood 6066

9104 North 31st

---

## Steel Tanks

For Every Purpose

**NEBRASKA & IOWA STEEL  
TANK CO.**

13th and Willis Sts.

Phone WE. 0282

## The KING FONG CAFE

*Quiet—Convenient*

*Service Unsurpassed*

We are serving the best 50c Merchant's Lunch in the city daily from 11 a. m. to 3 p. m., and serving a Special Dinner every Sunday, \$1.25 per plate, four courses complete, from 11 a. m. to 8 p. m.

**Chinese and American Cuisine**

*Open from 11 a. m. to 2 p. m.*

---

## THE NEW "TASTY" POTATO CHIPS

Are made in North Omaha. Pure and delicious—just the kind you enjoy day after day. Now on sale at your grocers' druggists and Bakeries. Ask him for "Tasty"—they are true to their name.

**MIDWEST  
POTATO CHIP COMPANY**

16th and Sprague Sts.

Phone KE. 3354

# SKOGLUND STUDIO

Sixteenth and Douglas Streets  
Phone Jackson 1375

*☞ We wish to thank the Faculty and  
Students of the UNIVERSITY OF  
OMAHA for their liberal patronage  
this year, and hope to merit a con-  
tinuance of the same.*

DUPLICATE ORDERS FROM GROUPS OR SINGLE PICTURES  
AT REDUCED RATES

*The Recollection of*



QUALITY

*lingers long after the*

PRICE

*is forgotten*

CAKES AND PIES

FANCY PASTRIES

PLAIN and SWEET ROLLS

**Northrup-Jones**  
COMPANY

TWO STORES:

309 South Sixteenth Street

3570 Farnam Street



## AFTERWORD

*In presenting *The Gateway Annual of 1927*, we have depicted the year's work of the U. of O. in a manner that we hope will meet with the kindest approval of our critics. We trust that these pages will afford our readers not only temporary pleasure but also permanent happiness, years hence, when the old University spirit renews those joyful memories which cluster around our associations of the days gone by.*

