

Yale University

## EliScholar – A Digital Platform for Scholarly Publishing at Yale

---

Yale-New Haven Hospital Annual Reports

Yale–New Haven Hospital

---

9-11-1944

# General Hospital Society of Connecticut 1943 - 1944

General Hospital Society of Connecticut

Follow this and additional works at: [http://elischolar.library.yale.edu/ynhh\\_annual\\_reports](http://elischolar.library.yale.edu/ynhh_annual_reports)

---

### Recommended Citation

General Hospital Society of Connecticut, "General Hospital Society of Connecticut 1943 - 1944" (1944). *Yale-New Haven Hospital Annual Reports*. 21.

[http://elischolar.library.yale.edu/ynhh\\_annual\\_reports/21](http://elischolar.library.yale.edu/ynhh_annual_reports/21)

This Article is brought to you for free and open access by the Yale–New Haven Hospital at EliScholar – A Digital Platform for Scholarly Publishing at Yale. It has been accepted for inclusion in Yale-New Haven Hospital Annual Reports by an authorized administrator of EliScholar – A Digital Platform for Scholarly Publishing at Yale. For more information, please contact [elischolar@yale.edu](mailto:elischolar@yale.edu).

# GENERAL HOSPITAL SOCIETY OF CONNECTICUT

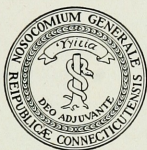
1943-1944



They Also Serve . . .

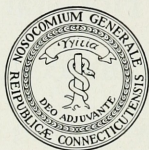


Annual Report of the  
General Hospital Society  
of Connecticut  
and the New Haven Dispensary  
1943—1944



NEW HAVEN CONNECTICUT

# The General Hospital Society of Connecticut



¶ The General Hospital Society of Connecticut, which was chartered by a group of civic leaders in New Haven on May 26, 1826, owns and operates the New Haven Hospital. It is probably the fifth oldest general hospital society in the United States.

Created by and for the community, the Hospital, a voluntary institution, has served the sick and injured for more than a century. Coincidental with the growth of the city the Hospital has expanded from a capacity of 75 beds to 590 beds. It provides hospital care for the men, women, and children of the community without regard to race, religion, or ability to pay.

As a general hospital, affiliated with the Schools of Medicine and Nursing of Yale University, it is equipped to provide the patient with skilled and modern treatment for acute diseases, including contagious, tuberculous, nervous, and mental diseases.

The New Haven Dispensary, chartered in 1872, is affiliated with the New Haven Hospital. Its 35 clinics are located in the Hospital and are organized for the diagnosis and treatment of the sick and needy not requiring bed care.

New Haven, Connecticut

1945

## TABLE OF CONTENTS

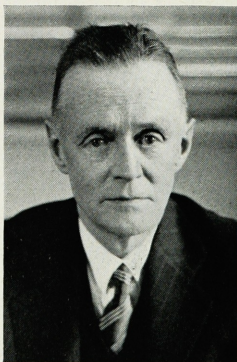
Donors of Gifts, 1943-1944 . . . . .	23
Financial, 1943-1944	
Auditors' Certificate . . . . .	34
Balance Sheet . . . . .	35
Changes in Endowment Funds, Funds Functioning as Endowment . . . . .	44
Endowment Funds and Funds Functioning as Endowment . . . . .	43
Free Bed Funds . . . . .	46
Funds Investments . . . . .	40
Statement of Income and Expense . . . . .	39
Statement of Operating Deficit . . . . .	38
Forms of Bequest . . . . .	51
Honor Roll . . . . .	48
Members of the General Hospital Society, 1943-1944 . . . . .	25
Necrology of the General Hospital Society, 1943-1944 . . . . .	10
Officers, 1944-1945	
Board of Lady Visitors . . . . .	7
Camp Happyland Association . . . . .	7
Connecticut Training School for Nurses . . . . .	7
General Hospital Society . . . . .	6
New and Retiring Presidents of the Society . . . . .	4
New Haven Dispensary . . . . .	6
Report of the Board of Directors and the Executive Staff . . . . .	11
Staff, 1944-1945	
Executive, New Haven Hospital and New Haven Dispensary . . . . .	8
Medical . . . . .	26
Nursing . . . . .	31
Statistical	
Clinic Visits, 1939-1944 . . . . .	22
Comparative Statistical Summary, 1943-1944 . . . . .	18
Distribution of Patient Days, by Residential Areas, 1942-1944 . . . . .	20

NEW AND RETIRING PRESIDENTS  
OF THE GENERAL HOSPITAL SOCIETY  
OF CONNECTICUT

**M**R. FREDERICK H. WIGGIN, senior partner of the law firm of Wiggin & Dana and intimately associated with the Hospital for 24 years, was elected President of the General Hospital Society of Connecticut to succeed Harry C. Knight for the year 1944-1945 at the postponed annual meeting held October 26, 1944.

A member of the Executive Committee since 1920 and Vice-President of the Society since 1930, Mr. Wiggin has served on many occasions as acting President during the terms of the two succeeding Presidents and his choice provides a continuity of experience particularly fortunate at a time when both this Hospital and nearly all social institutions are undergoing a careful re-definition.

Mr. Wiggin, like his 15 predecessors in office during the past 119 years, has given his time freely to community service in



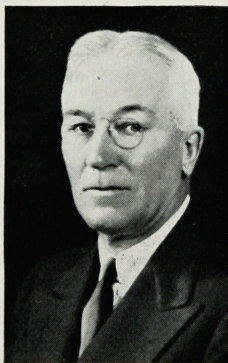
Frederick H. Wiggin

other fields. As a past president of the Community Chest and of its member agency, the New Haven Boys Club, he is familiar with the over-all community effort toward improvement of the social picture, while having served as Alderman of the City of New Haven he is also acquainted with the community's official programs.

A native of Litchfield, Connecticut, and an alumnus of Taft School and Phillips Andover Academy, Mr. Wiggin graduated from Yale in 1904 and received his law degree from Yale in 1909. He has practiced his profession in New Haven continuously since that time with the exception of his period of service in the United States Army from which he was discharged from active duty in December, 1918, as a Captain of Field Artillery in the Reserve Corps.

In accordance with his previously expressed intention, Mr. Knight, a member of the Executive Committee since 1930 and President of the Society since 1936, tendered his resignation to take effect as of the date of the Annual Meeting.

Mr. Knight gave generously of his interest and time to the Hospital and his resignation was accepted with regret.



Harry C. Knight



# OFFICERS

1944-1945

## GENERAL HOSPITAL SOCIETY OF CONNECTICUT

Frederick H. Wiggin, *President*  
Frederick D. Grave, *Vice-President*  
Orville F. Rogers, M.D., *Secretary*  
The Union & New Haven Trust Company, *Treasurer*

*Directors whose terms of office expire respectively in*

1945	1946	1947
Stanhope Bayne-Jones, M.D.*	Lewis H. Bronson	Frederick M. Adler
George W. Berger	Harry W. Dorigan	D. Spencer Berger
Arthur B. Clark	Mrs. Samuel C. Harvey	Clarence Blakeslee
Stanley Daggett	Harry C. Knight	George Parmly Day
Henry F. English	John J. McKeon	George S. Hawley
Henry L. Galpin	Ogden D. Miller	Henry Ware Jones
Frederick D. Grave	Orville F. Rogers, M.D.	Carlos F. Stoddard, Jr.
William B. Gumbart	Charles E. Rolfe	Milton J. Warner
Wilbur G. Hoye	W. F. Verdi, M.D.	Frederick H. Wiggin
Carl A. Lohmann		M. C. Winternitz, M.D.

*Finance Committee*

Henry L. Galpin	John J. McKeon	Harry W. Dorigan
-----------------	----------------	------------------

*Executive Committee*

Frederick H. Wiggin, <i>ex officio</i> , <i>Chairman</i>	
D. Spencer Berger	Wilbur G. Hoye
Frederick D. Grave, <i>ex officio</i>	Carl A. Lohmann

*Auditors*

Lybrand, Ross Bros. & Montgomery

## NEW HAVEN DISPENSARY

Frederick M. Adler, *President*  
Frederick H. Wiggin, *Vice-President*  
Frederick N. Sperry, M.D., *Secretary*  
The Union & New Haven Trust Company, *Treasurer*

*Directors whose terms of office expire respectively in*

1945	1946	1947
Stanhope Bayne-Jones, M.D.*	Frederick M. Adler	Arthur N. Alling, M.D.
Harry C. Knight	George Blumer, M.D.	D. Spencer Berger
John J. McKeon	Henry F. English	George Dudley Seymour
Frederick N. Sperry, M.D.	Frederick D. Grave	Frederick H. Wiggin
Henry H. Townshend	James E. Wheeler	

*Finance Committee*

Frederick M. Adler, <i>Chairman</i>	Carl A. Lohmann
-------------------------------------	-----------------

\*In national service.

BOARD OF LADY VISITORS

Mrs. Lewis H. Bronson, *Secretary*

Mrs. John C. Adams	Mrs. Charles B. Doolittle	Mrs. William C. Moran
Mrs. Frederick M. Adler	Mrs. John F. Fulton	Mrs. William A. Rutz
Mrs. James T. Babb	Mrs. Samuel C. Harvey	Mrs. Lawton G. Sargent
Mrs. D. Spencer Berger	Mrs. Herman P. Hessler	Mrs. Theodore R. Sucher
	Mrs. Albert J. Johnson	
	Mrs. Edward Man	

CONNECTICUT TRAINING SCHOOL FOR NURSES

*President*

Frederick H. Wiggin

*Vice-President*

Mrs. Winchester Bennett

*Treasurer*

Henry L. Galpin

*Secretary*

Mrs. Lewis H. Bronson

*Auditors*

Lybrand, Ross Bros. & Montgomery

CAMP HAPPYLAND ASSOCIATION

WILLIAM WIRT WINCHESTER MEMORIAL HOSPITAL

Mrs. Earle B. Seeley, *President*

Mrs. Emerson L. Munson, *First Vice-President*

Mrs. Fred H. Page, *Second Vice-President*

Mrs. Leopold Schoenberger, *Recording Secretary*

Mrs. Howard I. Michaels, *Corresponding Secretary*

Mrs. Arthur E. Alling, *Treasurer*

*Members of the Association*

Mrs. Vernal W. Bates	Mrs. Eliot N. Gwatkin	Mrs. Maurice W. Powell
Mrs. Carl W. Bettcher	Mrs. Edward A. Judge	Mrs. Charles N. Prouty
Mrs. Lewis H. Bronson	Mrs. Rollin G. Osterweis	Mrs. Edward Sullivan
Mrs. John D. Desmond		Mrs. Harry Usher

# EXECUTIVE STAFF

1944-1945

## NEW HAVEN HOSPITAL AND NEW HAVEN DISPENSARY

### *Director*

James A. Hamilton

### *Assistant Directors*

Leon N. Hickernell

Paul Fleming

Dudley P. Miller

### *Chief Admitting Officer*

Helen B. Bray

### *Chief Dietician*

Marion G. Dana

### *Laundry Manager*

Warren Eastman

### *Director of Nursing Service*

Laura M. Grant

### *Director of Personnel*

Dorothy Hehmann

### *Controller*

Arthur H. Hibson

### *Medical Record Librarian*

Olive G. Johnson

### *Supervisor of Women Volunteers*

Bettina Jones

### *Chief Engineer*

Clifford H. Leighton

### *Executive Housekeeper*

Mary McKeegan

### *Director of Public Relations*

A. H. Marshall

### *Pharmacist*

Charles W. Noyes (until Jan. 1, 1945)

Robert A. Kumpf (after Jan. 1, 1945)

### *Director of Medical Social Service*

Elizabeth P. Rice

### *Director of Purchasing*

J. Hasbrouck Wallace

### *Groundskeeper—Winchester Hospital*

Martin Meehan



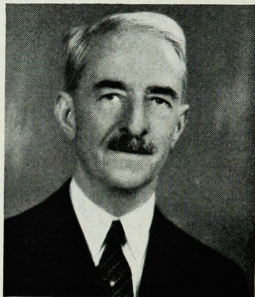
Despite inroads of the armed forces on the surgical staff, 5,787 operations were performed during the year.

WE report with sorrow the death during the period of the Report the following members of the General Hospital Society of Connecticut:

Mrs. FREDERICK T. BRADLEY  
*Vice-President for Life* 1914-44  
January 3, 1944

Mrs. WALTER E. MALLEY  
*Vice-President for Life* 1932-44  
February 10, 1944

JOHN T. MANSON  
*Vice-President for Life* 1908-44  
February 21, 1944



THOMAS W. FARNAM  
August 3, 1943

Thomas W. Farnam, a Director of this Hospital since 1906 and Chairman of the Executive Committee since 1929, died on August 3, 1943, after an illness of slightly more than one year.

A lifelong resident of New Haven, Mr. Farnam was one of its most constructive and outstanding citizens.

New Haven Hospital was in the front rank of Mr. Farnam's interests. Representing Yale University as well as the community, he had a large part in the plans for and development of the physical property devoted to its use.

Mr. Farnam combined an able mind with a warm and generous heart and a keen sense of humor. He was a loyal friend to many causes and to many persons. In his death this Institution has lost a wise counselor and the members of the Board have lost an associate ever to be remembered with affection and esteem.

—Excerpt from minutes of the Board of Directors

## REPORT OF THE BOARD OF DIRECTORS AND THE EXECUTIVE STAFF

THE pressures of war conditions forced themselves more acutely and with more rapid change than ever before on the activities of New Haven Hospital during its fiscal year ended June 30, 1944. Complying with government restrictions and faced with acute shortages of personnel in positions vital to its operation, the Hospital necessarily continued to alter its traditional practices in order to maintain essential service.

Under such constantly changing conditions it was a period of practical day-to-day planning. Each day brought new demands for service and altered materially our ability to provide it. This service has been made possible only through resourceful teamwork, personal sacrifice and fortitude on the part of the professional staffs, employees and volunteer workers in the Hospital organization.

### *Meeting the Military Needs*

In cooperation with the Schools of Medicine and of Nursing of Yale University, the Hospital continued to do its part in the training of much-needed military professional personnel.

At the request of the government, the number of physicians on our House Staff was radically reduced, the percentage of those eligible for military service was kept at a minimum and the period of their training was accelerated from 18 or 24 months to nine months.

As part of the program of the United States Cadet Nurse Corps, the School of Nursing increased its enrollment three-fold, with results which will be beneficial in the near future to both the military and the civilian community.

The Honor Roll of members of our organization serving their country in the armed forces increased to a total of 338.

The William Wirt Winchester Hospital continued to be the station hospital of the Army Air Forces Technical Training Command School at Yale University and has furnished facilities also for the care of many overseas casualties.

### *Meeting Civilian Needs*

As shown by the statistical data accompanying this report,

the number of patient days' service decreased by 2,881. Yet, as typical of the ever-changing picture, this decrease occurred during a year in which the Hospital experienced the highest daily census of its history and provided service for the victims of an epidemic of infantile paralysis. As the only isolation hospital in the district, it received from 29 cities and towns 210 persons with positive diagnoses of this disease and 30 with questionable conditions. Only ten deaths occurred. Such a potentially overpowering load was met only by means of the outside assistance of 145 part-time nurses borrowed from public and private agencies, 92 medical students and a special group of 40 volunteers who contributed hundreds of hours of service.

Although a high average occupancy of 85.5% was maintained, the decrease in total patient days resulted primarily from the necessity of eliminating beds in excess of our normal bed complement, particularly in private service, and the closing of three nursing units for a period of six weeks, an arrangement which many hospitals have had to make for the duration of the war. This shrinkage of facilities was entirely due to the great shortage of skilled nursing personnel so imperatively required by the armed forces.

The number of Dispensary visits, on the other hand, increased by 5,429, reflecting the influx of workers to the community from other regions. Also the drafting of fathers into military service has caused more families to seek Dispensary service on account of lowered income.

### *Personnel*

The average number in the working force of the Hospital was 683. This was a slight increase, resulting chiefly from the employment of a larger proportion of part-time workers. Turnover reached a new high of 115%. The rate among part-time workers was 159%, and 79% occurred during the first six months of employment. Statistics do not reveal the difficulties of operation with a large number of new, inexperienced workers, many of whom are not willing to work on the evening, night and weekend shifts. Furthermore, the figures fail to show the constant drain of absenteeism and sickness.

Emphasis was placed on retaining the more experienced workers whose faithfulness to their task we partially rewarded

by deserved increases in salary. Meanwhile, the chiefs of professional staff, department heads and their immediate assistants have been compelled to bear a staggering burden. Tribute is due also to the pupil nurses of the Yale University School of Nursing who have had to carry the brunt of the increasing responsibilities of the nursing service.

### *Volunteer Service*

Too much cannot be said in appreciation of the whole-hearted cooperation of large numbers of women and men of the community who have joined our Volunteer Services and to those of the Red Cross. In our Volunteer organization 54,308 hours of service were contributed by the women, including a highly appreciated Junior Division, and 14,318 by the men. In addition 14,709 hours were furnished by the various Red Cross groups. An additional division of the Men's Volunteers has been developed to assist the Maintenance Department and is giving an excellent account of itself. While of necessity there have been shifts among the individuals concerned, the enthusiasm of these groups remains high and their service to the community, through the Hospital, becomes increasingly noteworthy.

### *Financial*

By reason of the smaller number of patient days, the income of the Hospital decreased by \$23,059.89 from the preceding fiscal year, while the daily average cost per patient increased to a new high of \$9.55. Likewise, the increased cost of operating the Dispensary more than overcame a slight increase in income.

The combined deficits of the Hospital and Dispensary amounting to \$182,639.10 were the highest in their many years of operation. The cause of these increased deficits is found in higher costs of all kinds, particularly that of wages to personnel, so necessary to maintaining even a minimum force. Approximately 70% of the total operating expense of the Hospital and Dispensary is in compensation to personnel. While wages paid by these units are reasonably good in comparison with other institutions, the Hospital is naturally at a disadvantage in competing with war industry for the limited labor supply. When various requirements can no longer be postponed and adequate personnel is again



available, the annual operating costs are likely to be substantially increased.

During the year plans were developed to refinance for a ten-year period and at a lower rate of interest the funded debt of the Hospital which was incurred 20 years ago to build the Private Pavilion.

An intensive study of the factors affecting the structure of rates to patients was conducted with the result that a new schedule at higher levels became effective on July 1, 1944.

The deficit of \$182,639.10 was reduced by contributions from Yale University of its guarantee of \$100,000.00 and a later appropriation of \$82,639.10, for all of which we record our sincere appreciation. We are indebted also to the Community Chest, the State of Connecticut, the City of New Haven and the Kiwanis Club for their appropriations. We are grateful, likewise, to the many donors who, by gifts of books, periodicals and flowers, have brought cheer to patients.

It is a pleasure to report that the accession of gifts to endowment principal continues to give evidence of the community's appreciation of the values of the Hospital. During the year such gifts amounted to \$211,462.15.

During the year the Board of Directors undertook a careful study of the activities of the Society through the following special committees of the Board: By-Laws, Expansion of Operations, Financial Relations with Yale University, Free Beds, Hospital Auxiliaries, Program, Public Education and Public Relations, and Winchester Funds.

In view of pressing major problems requiring careful decision, a Joint Committee of the Hospital and Yale University was created to the end that specific measures may be taken to clarify and strengthen the relations of the two Institutions.

Undoubtedly the financial aspects of current operation of the Hospital, the Hospital's responsibility to meet the needs of the community and the requirements of returning veterans demand that an expansion of private and semi-private facilities be made as early as possible.

For their untiring efforts to meet the problems of this period, we express our heartfelt thanks to every member of the Hospital organization; to the Board of Lady Visitors; and to the many Volunteers for their continued interest and effective service.

We pledge our best efforts to meet the obligations of the future and for our continued success we earnestly solicit all possible help and understanding support from the people of the community.

For the Board of Directors

HARRY C. KNIGHT

*President*

For the Executive Staff

JAMES A. HAMILTON

*Director*



Nearly 2,000 employment interviews were conducted during the year to maintain a minimum working force.



In cooperation with the Schools of Medicine and of Nursing of Yale University, the Hospital continued to do its part in the training of much-needed military professional personnel.



Volunteers gave thousands of hours to serving patients, helped out in nearly every department of the Hospital.

Diversional Therapy among both children and adults helped to keep minds healthfully occupied while bodies were mending.



# COMPARATIVE STATISTICAL SUMMARY

## NEW HAVEN HOSPITAL

	<i>Year Ended</i> June 30, 1943	<i>Year Ended</i> June 30, 1944	<i>Increase</i>	<i>Decrease</i>
Patients in hospital start of period	494	479		15
Admitted	13,120	12,342		778
Total patients cared for	13,614	12,821		793
Discharged	13,135	12,358		777
Patients in hospital end of period	479	463		16
Total number of days' service including Psychiatric Clinic				
	178,482	175,354		3,128
Average length of patients stay	13.59	14.19	.60	
Daily average number of patients	489	479		10
Largest any one day	550	569	19	
Smallest any one day	377	363		14
Total number of visits to Dispensary	76,524	81,953	5,429	
Departmental Services:				
Operations	6,071	5,787		284
Deliveries	1,435	1,500	65	
Anesthesias rendered	5,410	4,640		770
X-ray examinations	21,817	22,888	1,071	
Laboratory examinations	56,206	50,462		5,744
Urological treatments	980	1,150	170	
Urological X-ray examinations	1,062	1,071	9	
Radium applications	57	51		6
X-ray therapy treatments	3,570	3,500		70
Physical therapy treatments	9,813	8,599		1,214
Prescriptions filled	8,280	9,580	1,300	
Emergency out-patient visits	9,340	9,163		177
Orthopedic appliances made	588	235		353
Ambulance trips	1,981	1,721		260
Meals served	858,663	897,933	39,270	
Pieces laundered	6,156,149	5,815,247		340,902
Admissions by Class:				
Private	1,910	1,670		240
Semi-Private	3,754	3,388		366
Ward	7,304	7,028		276
<hr/>				
Total excluding Psychiatric	12,968	12,086		882
Psychiatric	152	256	104	
<hr/>				
Total	13,120	12,342		778
Admissions by Professional Service:				
Gynecological	740	681		59
Obstetrical	1,732	1,606		126
Medical—General	1,507	1,376		131
Medical—Communicable	843	805		38
Metabolism	351	226		125
Neurology	23	19		4
Pediatric—General	367	256		111
Pediatric—Communicable	617	839	222	
Pediatric—Newborn	1,613	1,484		129
Surgical—General	2,329	2,289		40
Dental Surgery	54	35		19
Neurosurgery	458	401		57
Ophthalmology	348	294		54

	Year Ended June 30, 1943	Year Ended June 30, 1944	Increase	Decrease
Orthopedic	491	490		1
Otolaryngology	933	800		133
Urology	562	485		77
Psychiatric and Mental Hygiene	152	256	104	
<b>Total</b>	<b>13,120</b>	<b>12,342</b>		<b>778</b>
<b>Discharges by Professional Service:</b>				
Gynecological	773	724		49
Obstetrical	1,690	1,560		130
Medical—General	1,472	1,301		171
Medical—Communicable	803	750		53
Metabolism	342	248		94
Neurology	20	17		3
Pediatric—General	435	351		84
Pediatric—Communicable	591	810	219	
Pediatric—Newborn	1,539	1,407		132
Surgical—General	2,424	2,360		64
Dental Surgery	53	31		17
Neurosurgery	464	415		49
Ophthalmology	342	294		48
Orthopedic	508	506		2
Otolaryngology	917	795		122
Urology	608	510		98
Psychiatric and Mental Hygiene	154	274	120	
<b>Total</b>	<b>13,135</b>	<b>12,358</b>		<b>777</b>
<b>Discharges by Condition:</b>				
Recovered	4,384	2,875		1,509
Improved	7,376	8,566	1,190	
Unimproved	555	277		278
Diagnosis only (includes those not treated)	241	105		136
Institutional deaths	395	348		47
Deaths within 48 hours	183	187	4	
<b>Total Discharges</b>	<b>13,134</b>	<b>12,358</b>		<b>776</b>
Stillbirths (not in Admissions)	24	25	1	

Patient Class:	Days Service		Daily Average		% of Occupancy	
	1942-43	1943-44	1942-43	1943-44	1942-43	1943-44
<b>Adults and Children</b>						
Private	21,652	18,899	59.32	51.64	69.79	67.44
Semi-Private	36,461	33,392	99.89	91.23	107.41	100.77
Ward	94,238	98,559	258.19	269.29	83.28	86.57
<b>Total</b>	<b>152,351</b>	<b>150,850</b>	<b>417.40</b>	<b>412.16</b>	<b>85.53</b>	<b>86.19</b>
<b>Newborns</b>						
Private and Semi-Private	7,616	6,622	20.86	18.09	99.36	86.16
Ward	8,194	7,808	22.45	21.33	77.41	73.56
<b>Total</b>	<b>15,810</b>	<b>14,430</b>	<b>43.31</b>	<b>39.42</b>	<b>86.63</b>	<b>78.85</b>
<b>Total excluding Psychiatric</b>						
Clinic	168,161	165,280	460.71	451.58	85.63	85.50
Psychiatric Clinic	10,321	10,074	28.28	27.52	55.44	53.97
<b>Total All Patients</b>	<b>178,482</b>	<b>175,354</b>	<b>488.99</b>	<b>479.10</b>	<b>83.02</b>	<b>82.72</b>

## General Hospital Society of Connecticut

Patient Location:	Days Service		Daily Average		% of Occupancy	
	1942-43	1943-44	1942-43	1943-44	1942-43	1943-44
Main Hospital	110,282	106,287	302.14	290.40	90.19	89.31
Isolation Pavilion	20,436	23,774	55.99	64.96	65.10	73.32
Private Pavilion	21,633	20,789	59.27	56.80	88.46	84.78
Tompkins Nursery	8,194	7,808	22.45	21.33	77.41	73.56
Private Nursery	7,616	6,622	20.86	18.09	99.36	86.16
<b>Total</b>	<b>168,161</b>	<b>165,280</b>	<b>460.71</b>	<b>451.58</b>	<b>85.63</b>	<b>85.50</b>
Psychiatric Clinic	10,321	10,074	28.28	27.52	55.44	53.97
<b>Total</b>	<b>178,482</b>	<b>175,354</b>	<b>488.99</b>	<b>479.10</b>	<b>83.02</b>	<b>82.72</b>

DISTRIBUTION OF PATIENT DAYS  
BY RESIDENTIAL AREAS  
NEW HAVEN HOSPITAL

<i>New Haven</i> County	1942-43	1943-44		1942-43	1943-44
New Haven	83,361	83,287	Prospect	45	7
West Haven	12,912	13,488	Seymour	1,242	757
East Haven	3,100	3,727	Southbury	328	164
Hamden	9,895	9,115	Wallingford	3,388	3,006
Ansonia	2,483	2,920	Waterbury	2,495	2,966
Beacon Falls	40	71	Wolcott		33
Bethany	389	495	Woodbridge	1,260	1,148
Branford	4,506	4,148			
Cheshire	680	660	Total New Haven		
Derby	1,660	1,503	County	139,874	139,974
Guilford	1,945	1,683	Fairfield County	11,649	11,266
Madison	903	988	Hartford County	4,277	4,237
Meriden	1,861	2,295	Litchfield County	1,665	1,315
Middlebury	35	123	Middlesex County	3,663	2,719
Milford	3,616	3,633	New London County	2,308	2,737
Naugatuck	529	771	Tolland County	58	83
North Branford	259	415	Windham County	121	88
North Haven	1,822	1,721			
Orange	987	829	Outside Conn.	3,149	3,080
Oxford	135	21			
			TOTAL PATIENT		
			DAYS	166,764	165,499



Research on poliomyelitis is only one of the many such life-saving projects carried on by the Yale School of Medicine—many for the armed forces.

The Hospital's continuing interest in patients after they go home helped this polio patient to keep on with his high-school work with the assistance of four volunteer teachers and a hospital respirator.





## CLINIC VISITS

## NEW HAVEN DISPENSARY

	1939-40	1940-41	1941-42	1942-43	1943-44
<b>MEDICINE</b>					
General Medical . . . . .	10,662	10,592	7,487	6,934	7,298
Skin . . . . .	2,884	2,488	2,110	2,157	2,389
Tuberculosis . . . . .	2,604	3,115	2,609	1,815	1,785
Allergy . . . . .	3,017	2,906	1,833	1,318	1,820
Cardiac . . . . .	1,009	920	898	625	723
Hematology . . . . .	1,286	1,151	753	549	494
Metabolism . . . . .	2,929	2,872	2,717	2,562	2,420
Neurology . . . . .	907	923	1,014	810	680
Special Medical . . . . .	4,326	3,528	2,510	3,330	2,830
<b>OBSTETRICS, GYNECOLOGY</b>					
General Obs. & Gyn. . . . .	7,779*	8,348*	8,752*	5,548	5,861
Residents' Clinic . . . . .				3,005	2,798
<b>PEDIATRICS</b>					
General Pediatrics . . . . .	11,013	10,110	7,458	5,999	7,213
Allergy† . . . . .			554	1,114	1,292
Cardiac . . . . .	517	574	558	413	491
Child Welfare Research† . . . . .		133	355	200	249
Fourth Medical . . . . .	157	85	73	101	109
Hemangioma† . . . . .			73	119	124
Hematology† . . . . .			11	28	56
Neurology . . . . .	313	261	244	225	319
Special Pediatrics . . . . .	748	642	272	337	590
Third Pediatrics . . . . .	1,375	1,479	1,458	1,193	1,129
<b>SURGERY</b>					
General Surgery . . . . .	12,942	12,021	11,518	8,072	8,968
Neuro-surgery† . . . . .			338	445	584
Tumor . . . . .			589	410	218
<b>PSYCHIATRY</b>					
	4,038	3,513	2,345	1,193	1,304
<b>DENTAL</b>					
	8,156	7,839	4,851	3,546	3,657
<b>OTOLARYNGOLOGY</b>					
	5,701	5,118	3,810	4,338	5,031
<b>OPHTHALMOLOGY</b>					
	7,450	7,142	6,246	4,903	3,383
<b>ORTHOPEDICS</b>					
	7,398	6,610	5,497	3,850	4,494
<b>PHYSICAL THERAPY</b>					
	9,065	5,148	4,352	3,254	3,587
<b>X-RAY</b>					
	5,457	5,291	4,886	5,094	6,269
<b>UROLOGY</b>					
	3,400	2,570	2,108	1,958	2,230
<b>MISCELLANEOUS</b>					
Child Development . . . . .	20	38	13	17	41
Emergency Room . . . . .	3,253	2,550	1,576	358	700
Pneumo-thorax† . . . . .				704	767
<b>GRAND TOTAL</b> . . . . .	<b>118,406</b>	<b>107,967</b>	<b>89,868</b>	<b>76,524</b>	<b>81,953</b>

\*Combined in annual reports prior to 1942-1943.

†Included in other services in previous years.

## DONORS OF GIFTS NEW HAVEN HOSPITAL

1943-1944

The following gifts made during the year are gratefully acknowledged:

### *Cash*

James R. Angell	Eugene Davidson	New Haven County Chap-
Fred Avery	Mrs. Abraham Fishman	ter, Nat'l Foundation for
Robert W. Carle	Morris Gold	Infantile Paralysis
Thomas & Brian Coffee	Mrs. I. Goldstein	Katherine O'Connor
Miss Catherine Collins	John Day Jackson	Mrs. S. B. Waters
Mary and John Conway	Kiwanis Club	Leonard D. Weil
	Max Livingston	

### *Books*

Mrs. Charles Crook & Family	Mrs. Herbert Emanuelson	Mrs. Ellsworth Grumman
Frederick Daniels	Mrs. H. B. Ennis	Miss Dorothy A. Hehmann
Paul N. Dann	Mr. and Mrs. C. G. Freese	Miss H. Ketchle
East Haven Free Public Library	Gray-Y Beavers	Mrs. J. M. Kraft
		Miss Nancy Schatzman

### *Flowers*

Miss Peggy Barry	Family of Thomas W. Farnam	Rev. Sidney Lovett
Miss Caroline Childs		Mrs. R. M. Stannard
Family of Dr. Allen R. Diefendorf	Mrs. Richard H. Halloway	Mrs. Gladys Weber

### *Magazines*

Ralph Armstrong	Mr. and Mrs. C. G. Freese	Pvt. Sidney Mante
Barrack No. 4, Fort Lee, Maryland	Dr. John F. Fulton	Mrs. Margaret Manuel
Mrs. Florence Christy	Mrs. H. L. Galpin	Mrs. R. H. McKendrick
Mrs. A. B. Clark	Mrs. C. B. Gilbert	Mrs. Paul Messer
Mrs. C. D. Cooksey	Mrs. L. B. Gilbert	Mrs. Fred Moller
Mrs. J. F. Cunningham	Mrs. H. F. Godfrey	Mrs. J. Morford
Stanley Daggett	Mrs. E. V. Gray	Mrs. Adelle Petrosimione
Mrs. A. G. Dana	Mrs. George H. Gray	Miss Elizabeth C. Sargent
Mrs. Osborne A. Day	Mrs. H. G. Hawks	Pvt. & Mrs. Kenneth Steele
Mrs. Arthur Doolittle	Mrs. Louis L. Hemingway	Mrs. E. L. Taylor
Eastern Machine Screw Co.	Mrs. John W. Hession	Mrs. Alton Farrel
Mrs. Herbert L. Emanuelson	Mrs. C. B. Hogan	Graham F. Thompson
Faculty Guild	Mrs. Florence Joseph	J. Hasbrouck Wallace
Mrs. F. Farrel, Jr.	Mrs. J. M. Kraft	O. P. Ward
Mrs. Newton Feldman	Mrs. Harvey W. Lane	Miss Ruth Witherell
	Mrs. R. J. Leonard	Mr. & Mrs. A. L. Worthen
	Mrs. J. E. Levy	

DONORS OF GIFTS (*continued*)*Miscellaneous*

H. C. Bosworth	Girl Scout Troops 30, 33, 79, 94	Mrs. Silas Peck
Elizabeth Boyko	Miss Carol Gordon	Miss Martha Pellette
Vera Boyko	Gray-Y (5th Gr.)	Dr. Otto Pickhardt
Miss Bradley	Gray-Y Boys, Spring Glen	Mr. and Mrs. John Pope
Branford Sunshine Club	Cynthia Hamilton	George Post
Helen Breziki	Maude E. Hancock	Mrs. Gladys Prendergast
Frederick G. Brinsmade	Mrs. M. B. Harkins	Mrs. Arch Price
Brownie Troops 87 and 107	Miss Caroline I. Harrower	Red Cross, East Haven Branch
Mr. & Mrs. Norman Bryant	Mrs. O. W. Harversat	Red Cross Jrs., Hamden
Mrs. N. E. Bunn	Mr. & Mrs. Frederick Hast- ings	Red Cross Jrs., New Haven
Miss Grace Carleton	Mrs. Louis L. Hemingway	Mrs. Delia Russell
Miss Susan Cheney	Hourglass Club	Mrs. W. L. Russell
Mrs. G. Coombs	Mrs. R. N. Howard	Mrs. Thelma Slater
Mrs. W. W. Cox	Judd's Book Store	S. C. Sperry
Cub Pack No. 32	Mrs. Chester Kelsey	Miss Ann Spokes
Stanley Daggett	Mrs. Blanding Kingsford	Miss Hilder L. Svenson
Miss Marcia T. Dana	Mrs. H. C. Kohrer	Mrs. Raymond E. Thayer
Daughters of the King	Mrs. Henry A. Lepper	Mrs. Maurice Thyne
Day School, 5th Grade	Miss Mary L. Lockwood	Miss Rosemary Treat
Miss E. J. Diefendorf	Miss Clara D. Loomis	Rev. Luther Tucker
W. A. Drissler	Mrs. Sidney Lovett	Mr. & Mrs. J. H. Wallace
Miss Myra DuTrieuille	Miss Joan Madrigan	Janet Wallace
Dwight Place Church (Children's Group)	Clair Maher	Major and Mrs. Welles
Mrs. Felix Dzwankoski	Mrs. Morgan Mercer	Westville Congregational Church
Mrs. Anna Epstein	Mr. & Mrs. Robbins Miller	Miss L. F. Wheatley
Mrs. Iver Erickson	Mr. & Mrs. S. Minninberg	Mrs. Nathan H. White
Mrs. Russell S. Fenn, Jr.	Mrs. James E. Munson	Mrs. Donald B. Williams
First Ave. School (8th Gr.)	Mrs. George Nettleton	Women of the Moose
Miss Katherine Fleury	Wilbur Odell	Yale University Press
Rev. Robert S. Flockhart	Edward O'Neill	Mrs. R. M. Yerkes
	Muriel Pascale	

# MEMBERS OF THE SOCIETY

1943-1944

## *Vice-Presidents and Directors for Life\**

Frederick F. Brewster	Charles S. Leavenworth
Mrs. John S. Ely	Victor M. Tyler
Mrs. Abner Hendee	Mrs. Victor M. Tyler
	Mrs. W. O. Whitcomb

## *Vice-Presidents for Life*

Mrs. Vincent Ardenghi	Mrs. Henry Gregor
Winchester Bennett	Dr. and Mrs. S. C. Harvey
D. Spencer Berger	Miss Elizabeth R. Hooker
George W. Berger	Mr. and Mrs. John J. McKeon
Hiram Bingham	Walter E. Malley
Clarence Blakeslee	Phelps Montgomery
Mrs. Frederick F. Brewster	William D. Scranton
Arnold G. Dana	Mrs. Willard B. Soper
Mr. and Mrs. Franklin Farrel, Jr.	Louis E. Stoddard
Mr. and Mrs. Henry L. Galpin	Rev. Anson Phelps Stokes
A. C. Gilbert	Hayes Q. Trowbridge
Mr. and Mrs. Frederick D. Grave	Mrs. Rutherford Trowbridge
	Mr. and Mrs. B. P. Twichell

## *Life Directors*

Dr. Louis B. Bishop

## *Life Members*

William L. Andrews	George F. Eaton
Prof. Roswell P. Angier	Dr. and Mrs. Joseph M. Flint
Charles S. Baldwin	Mrs. Samuel Hemingway
Arthur S. Barnes	Dr. and Mrs. H. Everton Hosley
Mrs. F. D. Berrien	H. Stuart Hotchkiss
Charles F. Bliss	Mr. and Mrs. John Day Jackson
Miss Jane C. Bronson	Mr. and Mrs. Harry C. Knight
Theodore L. Bronson	Harris Lapides
LeGrand Cannon	Dr. and Mrs. Robert M. Lewis
Edwin P. Cochran	Mrs. S. C. Morehouse
Charles E. Curtis	Dr. and Mrs. Leonard C. Sanford
Mr. and Mrs. Leonard M. Daggett	Mrs. John Phelps Taylor
J. Dwight Dana	Henry Hotchkiss Townshend
Miss Maria Trumbull Dana	Mrs. R. Townshend
Mr. and Mrs. George Parmly Day	Roger W. Tuttle
Julius G. Day	Dr. Margaret B. Weir
	Mrs. Louise F. Wilson

\*Previous to the amendment of the constitution of The General Hospital Society in 1919, persons contributing at any one time \$1,000 became vice-presidents for life; contributors of \$500, life directors; contributors of \$50, life members; and contributors of \$25, members for ten years. The Act of March 20, 1919, omitted the class of life directors and provided that contributors of \$500 should be life members; of \$25, annual members. Those enumerated in the list as life directors are, therefore, those who qualified before the amendment of 1919.

# MEDICAL STAFF

1944-1945

NEW HAVEN HOSPITAL AND NEW HAVEN DISPENSARY  
AFFILIATED WITH THE  
YALE UNIVERSITY SCHOOL OF MEDICINE

## MEDICAL BOARD

Francis G. Blake, <i>Physician-in-Chief, Chairman</i>	Grover F. Powers, <i>Pediatrician-in-Chief</i>
Samuel C. Harvey, <i>Surgeon-in-Chief</i>	Hugh M. Wilson, <i>Radiologist-in-Chief</i>
Eugen Kahn, <i>Psychiatrist-in-Chief</i>	Milton C. Winternitz, <i>Pathologist</i>
Arthur H. Morse, <i>Obstetrician and Gynecologist-in-Chief</i>	James A. Hamilton, <i>Director, Secretary</i>

## ADVISORY MEDICAL BOARD, PRIVATE PAVILION

Howard S. Colwell (Medicine)	Luther K. Musselman (Obs. and Gyn.), <i>Chairman</i>
Lewis C. Foster (Surgery)	Robert Salinger (Pediatrics)
	James A. Hamilton, <i>Director, Secretary</i>

## CONSULTING STAFF

Arthur N. Alling (Ophthalmology)	Frederick N. Sperry (Otolaryngology)
George Blumer (Medicine, <i>Emeritus</i> )	Wilder Tileston (Medicine)
Joseph I. Linde (Pediatrics)	William F. Verdi (Surgery)
Richard F. Rand (Obstetrics and Gynecology)	Charles-Edward A. Winslow (Hygiene)

## STAFF

### INTERNAL MEDICINE

*Physician-in-Chief*  
Francis G. Blake

<i>Associate</i>	<i>Attending</i>	<i>Assistant Attending</i>
Thaddeus S. Danowski	Harold S. Arnold	Marcus Backer
J. Russell Elkinton	Howard S. Colwell	Clement F. Batelli
Arthur J. Geiger	A. Bliss Dayton	*Charles A. Breck
Marion E. Howard	*James C. Fox, Jr. (Neurology)	William J. Bruckner
Bernard L. Kartin	Kirby S. Howlett, Jr.	*John H. Bumstead
*Paul H. Lavietes	Ralph E. McDonnell (Dermatology)	Massimo Calabresi
John R. Paul	Harold M. Marvin	*Charles W. Comfort
John P. Peters	Louis H. Nahum	Frank H. Couch (Neurology)
Alexander W. Winkler	Allan K. Poole	Gideon K. de Forest
	Orville F. Rogers	*Joseph N. D'Esopo (Tuberculosis)
<i>Assistant</i>	Maurice J. Strauss (Dermatology)	Theodore S. Evans
Charles M. Grossman (July 1—Sept. 30, 1944)		James F. Ferguson, Jr.
Harold C. Anderson (Oct. 1, 1944—June 30, 1945)		*Benedict R. Harris
		Jesse S. Harris

\*In national service.

STAFF

INTERNAL MEDICINE

(continued)

*Assistant Attending*  
 Martin Heinmann  
 Arthur H. Jackson  
 (Neurology)  
 Harvey W. Katz  
 \*Henry E. Klebanoff  
 Samuel D. Kushlan  
 Percy A. Leddy  
 Margaret A. Lennox  
 (Neurology)  
 Louis O'Brasky  
 Mariano L. Riccitielli  
 Arnold B. Rilance  
 \*Clarence L. Robbins  
 Bernhard A. Rogowski  
 (Neurology)  
 Otto Willner

*Residents*  
 Maurice Tulin  
 (July 1, 1944—Feb. 14,  
 1945)  
 Joseph P. Kriss  
 (Feb. 15—June 30, 1945)

*Associate Residents*  
 (Metabolism Service)  
 \*Ethan A. H. Sims  
 (July 1—Sept. 30, 1944)  
 Joseph P. Kriss  
 (Oct. 1, 1944—Feb. 14,  
 1945)  
 Maurice Tulin  
 (Feb. 15—June 30, 1945)

*Assistant Residents*  
 Grace E. Bergner

Robert H. Furman  
 Joseph P. Kriss  
 Thomas S. Sappington  
 Donald W. Seldin

*Internes*  
 Frederick A. Beardsley, Jr.  
 Frank S. Browne  
 Frank C. Ferguson, Jr.  
 John W. Findley, Jr.  
 George J. Friou  
 Lawrence Greenman  
 Edward Kinsella  
 Frederick D. Lawrason  
 Charles W. Lloyd  
 Russell R. Monroe  
 Sanford L. Palay  
 Charles M. Plotz  
 Benjamin R. Robinson, Jr.

PEDIATRICS

*Pediatrician-in-Chief*

Grover F. Powers

*Associate*  
 Paul L. Boisvert  
 Daniel C. Darrow  
 Herbert C. Miller  
 Dwain N. Walcher

*Assistant*  
 Donal L. Dunphy  
 Alan Foord  
 Jean L. McMahon  
 Carter Stilson  
 Victor C. Vaughan

*Attending*  
 Charles S. Culotta  
 Arnold Gesell  
 Edith B. Jackson  
 \*Morris Y. Krosnick  
 William C. McGuire

Helen G. Richter  
 Robert Salinger  
 Edward T. Wakeman  
 Margaret B. Weir  
 \*William R. Wilson  
 Herman Yannet

*Assistant Attending*  
 Catherine S. Amatruda  
 Joyce V. Deutsch  
 Katherine J. Edgar  
 Morris Goldstein  
 Elizabeth R. Harrison  
 Daniel F. Harvey  
 Maurice M. Hillman  
 Paul F. McAlenney, Jr.  
 Joseph Weiner  
 Thayer Willis

*Assistant Attending*  
*Psychologists*  
 Dorothy P. Marquis  
 Dorothy Gandine-Stanton

*Assistant Residents*  
 Laura L. Lipscomb  
 Edward F. Rabe

*Internes*  
 Richard N. Abbott  
 Henry B. Bruyn, Jr.  
 Robert E. Cooke  
 Charles H. Crothers  
 Katherine J. Hawley  
 Edward A. Mason  
 Lawrence I. Michel  
 Richard W. Olmsted

\*In national service.

## General Hospital Society of Connecticut

### PSYCHIATRY AND MENTAL HYGIENE

#### *Psychiatrist-in-Chief*

Eugen Kahn

#### *Associate Psychiatrists*

\*Warren T. Brown  
Clements C. Fry  
Isham Kimbell, Jr.  
Burness E. Moore  
\*Frederick C. Redlich  
Theodore P. Sohler

#### *Attending Psychiatrists*

\*Richard Goldstein  
\*Lloyd J. Thompson

#### *Attending Psychologists*

Margaret E. Keller  
Catharine C. Miles  
Walter R. Miles

#### *Assistant Attending Psychiatrist*

Mildred W. Couch

#### *Assistant Residents*

Bert Guterman  
John C. Nemiah

#### *Internes*

Eugene B. Brody  
Walter S. Lockhart, Jr.  
Albert E. Smith, 3d

### SURGERY

#### *Surgeon-in-Chief*

Samuel C. Harvey

#### GENERAL SURGERY

#### *Associate*

Gervase J. Connor  
\*William J. German  
(Neurological Surgery)  
Edwin A. Lawrence  
\*Gustaf E. Lindskog  
(Thoracic Surgery)  
John S. Lockwood

#### *Assistant*

Philip I. Brezina  
Malcolm M. Ellison  
Frank J. Lepreau

Allan J. Ryan

N. William Wawro

#### *Attending*

Bernard S. Brody  
(Neurological Surgery)  
Lewis C. Foster  
\*Ashley W. Oughterson

#### *Assistant Attending*

\*Louie N. Claiborn  
William C. Duffy

Simon B. Kleiner  
(Proctology)

Maurice Levinsky  
(Proctology)

John C. F. Mendillo  
\*Frederick W. Roberts  
Paul W. Vestal

#### *Assistant Residents*

Walter J. Burdette  
Lynn L. Johnson  
Bernard D. Koshkin  
Walter J. J. Nero

#### OPHTHALMOLOGY

#### *Attending Surgeons*

Eugene M. Blake  
Arthur M. Yudkin

#### *Assistant Attending*

David Freeman  
Leon Kaplan  
Herman C. Little

William L. Sheahan  
Ilona K. de Suto-Nagy  
Joseph F. Watts  
Leonard C. Whiting

#### ORTHOPEDIC SURGERY

#### *Associate*

Malcolm S. Eveleth

#### *Attending*

Robert J. Cook

\*In national service.

Carl W. Henze

\*Denis S. O'Connor

#### *Assistant Attending*

George G. Fox

\*William S. Perham  
David Poverman

#### *Assistant*

William E. Kenney

OTOLARYNGOLOGY

<i>Associate</i>	<i>Assistant Attending</i>	<i>Resident</i>
*Norton Canfield John P. Frazer	Creighton Barker Marvin L. Latimer Paul B. MacCready Samuel J. Silverberg	William A. Ahroon  <i>Associate Resident</i> Charles Petrillo

UROLOGY

<i>Attending</i>	<i>Assistant Attending</i>	<i>Assistant</i>
Clyde L. Deming Ralph H. Jenkins	Chris H. Neuswanger *Vincent Vermooten	*Robert R. Berneike

DENTAL SURGERY

<i>Associate</i>		
Bert G. Anderson	Joseph J. Dickstein Terry E. Hiltunen Walter S. Langston William M. Lawrence Harold T. Moore William D. Nesbit, Jr.	John B. Noll James P. Pigott Samuel H. Pinn Martin A. Rothman Harold M. Samuels Jacob Sharp
<i>Assistant Attending</i>		
Louis Angell Winston F. Clark		

OBSTETRICS AND GYNECOLOGY

*Obstetrician- and Gynecologist-in-Chief*

Arthur H. Morse

<i>Associate</i>	<i>Attending</i>	<i>Assistant Attending</i>
Herbert Thoms	A. Nowell Creadick Robert M. Lewis Luther K. Musselman Harlan B. Perrins Emerson L. Stone Margaret Tyler	Joseph A. Fiorito Carl E. Johnson  <i>Associate Resident</i> Milton S. Godfreid
<i>Assistant</i>		
John H. Grossman Kenneth R. Morgan		

SURGERY, OBSTETRICS, AND GYNECOLOGY

<i>Internes (Rotating Service)</i>		
Harold S. Auerhan Samuel P. W. Black George A. Cohn Joseph I. Epstein Cornelius P. Frey John P. Haberlin Charles R. Mowery, Jr.	Anthony J. Thompson Richard C. Thompson *Anthony Zovickian Julian T. Brantley Jefferson P. Brooks George B. Corcoran, Jr. James W. Correll	Lawrence G. Crowley Robert W. Frelick Harry W. Kausel Edward T. Krementz Edwin F. Lang, Jr. Herman Shapiro Frederick W. Shull W. Keasley Welch

\*In national service.



*General Hospital Society of Connecticut*

## RADIOLOGY

*Radiologist-in-Chief*

Hugh M. Wilson

*Associate*Henry S. Kaplan  
\*Walter G. Lutz*Assistant Attending*\*Michael D'Amico  
Joseph L. Harvey  
Robert M. Lowman*Assistant Residents*Sidney L. Cramer  
Henry H. Jones*Assistant*

M. Ragan Green

## PATHOLOGY

*Pathologist*

Milton C. Winternitz

*Associate*Henry Bunting  
Stanley Durlacher  
Harry S. N. Greene  
\*Levin L. Waters*Assistant Attending*

\*Averill A. Liebow

*Assistant Resident*

Abbott A. Newman

*Resident*

Lucy A. Hacker

*Internes*Herbert D. Axilrod  
Saul Malkiel  
Joseph W. Spelman

## BACTERIOLOGY

*Bacteriologist*

George H. Smith

## ANAESTHESIA

*Anaesthetist-in-Chief*

Alice M. Hunt

\*In national service.

# NURSING STAFF

1944-1945

NEW HAVEN HOSPITAL AND NEW HAVEN DISPENSARY

AFFILIATED WITH

YALE UNIVERSITY SCHOOL OF NURSING

## OFFICERS OF ADMINISTRATION

*Director of Nursing Service*

Laura M. Grant

*Assistant Directors*

Dorothy Alling

Carolyn Herrick

Anne Ryle

*Administrative Supervisors*

Mary H. Beers

Teresa Dennehy

Margaret Deximer

Mary L. Henry

Hope Pitou

Barbara Russell

Ada Wicks

Elizabeth Wilkinson

Marion Wolcott

## CLINICAL SERVICES

### MEDICINE

*Assistant Director of Nursing*

Jean MacLean

*Supervisors*

Violet Michelson

Marion H. Rosenbaum

*Head Nurses and Assistants*

Muriel Bailie

Margaret Fallon

Lois Fladager

Barbara Hurlin

Britta James

Emily Johnson

Margaret MacWilliam

Kathryn Petrillo

### SURGERY

*Assistant Director of Nursing*

Martha Jayne

*Supervisor*

Katherine Buckley

*General Hospital Society of Connecticut**Head Nurses and Assistants*

Margaret Affinito  
Janet Buchanan  
Helen Carlson  
Kathleen Clare

Helen Cruikshank  
Kathleen Griffin  
Janis Jund  
Myrtle Swanson

## OPERATING ROOMS

*Assistant Director of Nursing*

Marguerite R. duMortier

*Head Nurses and Assistants*

Elizabeth Cassidy  
Rhea Labov

Regina Piccirilli  
Louisa Popham

Alma Pontillo

## CHILDREN'S SERVICE

*Assistant Director of Nursing*

Florence Blake

*Supervisors*

Florence Alexander  
Helen Hallfors

*Head Nurses and Assistants*

Elizabeth Cole  
Janet Caldwell

Eleanor Ingelido  
Pauline Kummer

Elizabeth Thompson

## OBSTETRICS AND GYNECOLOGY

*Assistant Director of Nursing*

Julia E. Jessup

*Supervisor*

Miriam Bloomquist

*Head Nurses and Assistants*

Marjorie M. Kenney

Helen Langdon  
Helen Menken

Frances Stoll

## PRIVATE AND SEMI-PRIVATE

*Assistant Director of Nursing*

Norma Petersen

*Head Nurses and Assistants*

Kathleen Aldrich  
Jeanie Auld

Nancy Hooker  
Janet Mudge

HEALTH SERVICE

*Assistant Director of Nursing*

Irma Biehuseu

*Head Nurses*

Helene Fitzgerald

Carolyn Welch

OTHER SERVICES

EQUIPMENT, SUPPLIES, SPECIAL SERVICES

*Supervisor*

Barbara Russell

*Head Nurses and Assistants*

Mary Buckley

Lucy Farrell

Clara Wheeler

RESIDENCE DIRECTOR

Elizabeth Hirst

*To the Board of Directors,  
The General Hospital Society of Connecticut,  
New Haven, Connecticut.*

*We have made an examination of the balance sheet of*

THE GENERAL HOSPITAL SOCIETY  
OF CONNECTICUT

(comprising the New Haven Hospital and the  
William Wirt Winchester Memorial Hospital)

*as of June 30, 1944 and of the related statements of operating deficit and income and expense for the fiscal year then ended. In connection therewith, we examined or tested accounting records of the Society and other supporting evidence and obtained information and explanations from officers and employees of the Society; we also made a general review of the income and expense accounts for the year, but we did not make a detailed audit of the transactions.*

*At the request of your Treasurer, The Union & New Haven Trust Company, we did not apply the auditing procedure of confirming the accounts receivable by communication with the debtors and, owing to the amount of time which would be involved, we did not make a detailed review of the patients' accounts receivable. The allowance of \$168,128.25 appears to be sufficient to cover eventual losses on collection of the amount of \$328,138.37 shown on the attached balance sheet as due from patients at June 30, 1944.*

*The stocks and bonds, real estate mortgages and real estate shown on the books at June 30, 1944 were in agreement with those shown on certified lists submitted to us by the Custodian, The Union & New Haven Trust Company. At June 30, 1944 the approximate amount of the stocks and bonds based on market quotations was \$4,294,000.00 compared with a total book amount of \$4,126,928.61.*

*Our examination of the recorded changes in the accounts for the funds principal was limited to a comparison of the transactions shown on the books with reports of such changes prepared by the Treasurer, The Union & New Haven Trust Company, and submitted to your Board for approval.*

*It was impracticable for us to obtain direct confirmation and verification of legacies and gifts received during the year ended June 30, 1944. We have not undertaken to ascertain that provisions affecting funds and gifts have been observed.*

*In our opinion, based upon such examination and subject to the foregoing comments and also to the explanations shown in footnotes to the statements, the accompanying balance sheet and related statements of operating deficit and income and expense fairly present the position of the Society at June 30, 1944, and the results of its operations for the year then ended.*

LYBRAND, ROSS BROS. & MONTGOMERY  
Certified Public Accountants.

New York, September 11, 1944.

## THE GENERAL HOSPITAL SOCIETY OF CONNECTICUT

### BALANCE SHEET, JUNE 30, 1944

ASSETS			
Operating assets:			
Cash (Note 2)		\$	115,592.99
Accounts receivable, patients	\$ 328,138.37		
Less, Allowance for uncollectible accounts	168,128.25	160,010.12	
Miscellaneous accounts receivable		23,062.93	
Contribution receivable		25,000.00	
Inventories of supplies, at cost		121,889.98	
Deferred charges:			
Unexpired insurance, etc.	3,984.38		
Equipment, etc.	2,531.66	6,516.04	\$ 452,072.06

#### NOTES:

1. The assets and funds of the New Haven Dispensary, which amounted to approximately \$60,000, are not included in the above balance sheet.
2. In accordance with the adopted policy of the Society, general fund cash and accounts payable have been reduced as of June 30, 1944 by approximately \$79,000, representing disbursements after that date for accrued expenses and commitments included in the accounts before closing at June 30, 1944.

## BALANCE SHEET

## ASSETS (continued)

## Funds assets:

Investments at cost or amount assigned by Treasurer at date of receipt:

Stocks and bonds, including \$74,000 First Mortgage 5 Per Cent Bonds of the Society due October 1, 1944 (approximate amount at market quotations, \$4,294,000)

\$4,126,928.61

Real estate mortgages

91,447.09

Real estate acquired from former mortgagor

73,406.97

4,291,782.67

Uninvested principal cash

26,223.41

Rent receivable from United States Government

10,484.58

Current account receivable from general fund

93,672.64

\$4,422,163.30

## Plant funds assets at book amounts (Note 3):

New Haven Hospital:

Land and buildings

1,275,124.58

Equipment

286,820.27

Radium

11,104.60

Proposed extension of private pavilion (architect's fees)

5,550.29

1,578,599.74

William Wirt Winchester Memorial Hospital:

Land and buildings

\$ 913,583.87

Equipment

122,843.29

1,036,427.16

2,615,026.90

## Interfund account

7,489,262.26

93,672.64\$7,395,589.62

3. The amounts shown for buildings and equipment do not include buildings constructed by Yale University and used by the New Haven Hospital, or other items either charged off against capital invested in plant or treated as expense. The Society is contingently liable under certain agreements and upon certain contingencies to acquire such buildings erected by Yale University. No allowance is made for depreciation of buildings and equipment.

## BALANCE SHEET (continued)

## LIABILITIES AND FUNDS

## Operating:

## Liabilities:

Accounts payable, accrued pay roll, etc. (Note 2)	\$ 19,310.01	
Current account payable to funds principal	93,672.64	
Patients' credit balances	4,353.79	
Accrued interest on first mortgage bonds	6,700.00	
	<u>124,036.44</u>	
Due to funds principal for advances to provide working capital	175,000.00	\$ 299,036.44

## Reserves:

Unexpended expense appropriations	19,942.29	
Special funds, etc.	6,749.73	
For contingencies	172,000.00	198,692.02

Deficit, per statement attached	45,656.40*	\$ 452,072.06
---------------------------------	------------	---------------

## Funds principal:

Endowment funds and funds functioning as endowment (per statement attached), subject to annuity payments aggregating \$600 per annum	5,169,531.80	
--	--------------	--

## Less:

Unallocated net loss on disposition of investments	\$ 578,854.26	
Advances to provide working capital	175,000.00	753,854.26

Agnes D. Goeckler fund, expendable for treatment of cancer	4,415,677.54	
	6,485.76	4,422,163.30

## Plant liability and capital:

First Mortgage 5 Per Cent Bonds due October 1, 1944	1,000,000.00	
Less, Unissued	464,000.00	

Issued and outstanding (see funds assets, contra)	536,000.00	
Capital invested in plant	2,079,026.90	2,615,026.90

Interfund account	7,489,262.26	
	93,672.64	
	<u>\$7,395,589.62</u>	

\*Indicates red figure.



STATEMENT OF OPERATING DEFICIT  
FOR YEAR ENDED JUNE 30, 1944

Balance at beginning of year		\$ 36,982.70
For deficit, year ended June 30, 1944:		
Contributions from Yale University		100,000.00
		136,982.70
Deficits for year ended June 30, 1944:		
New Haven Hospital, per statement attached	\$144,248.35	
New Haven Dispensary, per statement attached	38,390.75	182,639.10
		\$ 45,656.40
Deficit at end of year		

# STATEMENT OF INCOME AND EXPENSE

FOR YEAR ENDED JUNE 30, 1944

	<i>Totals</i>	<i>New Haven Hospital</i>	<i>New Haven Dispensary</i>
Gross income from patients:			
Inclusive rate, in-patients:			
Private	\$ 220,702.50	\$ 220,702.50	
Semiprivate	309,543.00	309,543.00	
Ward	587,636.00	587,636.00	
	<u>\$1,117,881.50</u>	<u>\$1,117,881.50</u>	
Special charges:			
In-patients	\$ 21,596.36	\$ 21,596.36	
Private ambulatory patients	63,184.74	63,184.74	
Emergency out-patients	17,752.39	17,752.39	
	<u>\$ 102,533.49</u>	<u>\$ 102,533.49</u>	
Out-patients, dispensary	\$ 36,103.01		\$ 36,103.01
Total gross income from patients	<u>\$1,256,518.00</u>	<u>\$1,220,414.99</u>	<u>\$ 36,103.01</u>
Less:			
Allowances granted to patients	\$ 113,510.81	\$ 113,510.81	
Net provision for uncollectible accounts	53,111.48	53,111.48	
	<u>\$ 166,622.29</u>	<u>\$ 166,622.29</u>	
Net income from patients	<u>\$1,089,895.71</u>	<u>\$1,053,792.70</u>	<u>\$ 36,103.01</u>
Expense:			
Administration:			
Salaries	\$ 183,216.97	\$ 172,672.47	\$ 10,544.50
Supplies and expense	69,148.72	66,846.00	2,302.72
	<u>252,365.69</u>	<u>239,518.47</u>	<u>12,847.22</u>
Less, Reimbursed by affiliates, etc.	15,888.00	15,888.00	
	<u>\$ 236,477.69</u>	<u>\$ 223,630.47</u>	<u>\$ 12,847.22</u>
Dietary:			
Salaries	\$ 97,239.82	\$ 97,239.82	
Supplies and expense	183,356.39	183,356.39	
	<u>280,596.21</u>	<u>280,596.21</u>	
Less, Reimbursed by affiliates, etc., or allocated to other departments	134,187.24	134,187.24	
	<u>\$ 146,408.97</u>	<u>\$ 146,408.97</u>	
House and property:			
Salaries	\$ 209,651.75	\$ 202,316.62	\$ 7,335.13
Supplies and expense	188,342.85	182,183.16	6,159.69
	<u>397,994.60</u>	<u>384,499.78</u>	<u>13,494.82</u>
Less, Reimbursed by affiliates, etc., or allocated to other departments	94,478.12	94,478.12	
	<u>\$ 303,516.48</u>	<u>\$ 290,021.66</u>	<u>\$ 13,494.82</u>

## General Hospital Society of Connecticut

Professional care:			
Salaries	\$ 717,344.11	\$ 650,728.43	\$ 66,615.68
Supplies and expense	214,905.85	185,949.49	28,956.36
	<u>932,249.96</u>	<u>836,677.92</u>	<u>95,572.04</u>
Less, Reimbursed by affiliates, etc.	56,731.59	56,731.59	
	<u>\$ 875,518.37</u>	<u>\$ 779,946.33</u>	<u>\$ 95,572.04</u>
Total expense	<u>\$1,561,921.51</u>	<u>\$1,440,007.43</u>	<u>\$ 121,914.08</u>
Excess of expense over net income from patients			
	<u>\$ 472,025.80</u>	<u>\$ 386,214.73</u>	<u>\$ 85,811.07</u>
Other Income:			
Funds' investments	\$ 93,452.59	\$ 92,090.27	\$ 1,362.32
Yale University appropriations	56,375.00	52,000.00	4,375.00
Community Chest appropriation	58,250.00	35,750.00	22,500.00
State of Connecticut appropriation	20,000.00	20,000.00	
City of New Haven appropriation	5,000.00		5,000.00
Charges to William Wirt Winchester fund principal, for tuberculosis care, etc.	38,667.74	25,009.74	13,658.00
Connecticut Training School for Nurses	3,570.95	3,570.95	
Miscellaneous	14,070.42	13,545.42	525.00
	<u>\$ 289,386.70</u>	<u>\$ 241,966.38</u>	<u>\$ 47,420.32</u>
Total other income			
Deficits for year, before contributions to New Haven Hospital from Yale University shown in statement of operating deficit	<u>\$ 182,639.10</u>	<u>\$ 144,248.35</u>	<u>\$ 38,390.75</u>

NOTE: The William Wirt Winchester Memorial Hospital has been leased to the United States Government since January 21, 1943. The excess of income from related funds' investments, rent, etc. over expense incurred during the year ended June 30, 1944 was added to the principal amount of the William Wirt Winchester fund.

## FUNDS INVESTMENTS

JUNE 30, 1944

*Costs or Amounts  
Assigned by  
Treasurer  
at Dates of  
Receipt*

*Stocks and Bonds*

\$100,000	American Telephone & Telegraph 3¼'s 1961	\$ 105,828.51
49,000	American Tobacco 3's 1962	51,002.33
50,000	Atchison, Topeka & Santa Fe Ry. adj mtge stamped 4's 1995	41,682.25
50,000	Consumers Power 1st mtge 3½'s 1970	52,057.40
50,000	Detroit Edison gen & ref 4's 1965	53,749.95
74,000	General Hospital Society of Connecticut 1st mtge 5's 1944	71,400.00
27,000	Great Northern Ry. gen 4½'s 1976	20,701.00
21,000	Great Northern Ry. gen Series E 4½'s 1977	16,120.00
50,000	New York Edison 1st & ref. 3¼'s 1965	54,558.90
50,000	Ohio Edison 1st & cons 4's 1965	54,311.24
50,000	Pennsylvania RR gen A 4½'s 1965	47,199.58

General Hospital Society of Connecticut

41

50,000	Philadelphia Electric 1st 3½'s 1967	56,756.52
49,000	Philadelphia Electric Power 1st 5½'s 1972	55,966.28
50,000	Standard Oil New Jersey deb 2¾'s 1953	53,258.35
50,000	Texas Corp. deb 3's 1959	52,597.05
50,000	Union Electric of Missouri 1st mtge coll tr 3¾'s 1971	53,687.50
50,000	Southwestern Bell Tel. 1st 3½'s 1964	55,500.00
50,000	West Penn. Power 1st 3½'s 1966	55,500.00
200,000	U.S. Treasury 2½'s 1958-56	207,960.08
200,000	U.S. Treasury 2½'s 1954-52	209,368.86
50,000	U.S. Savings Bonds Series G dated May 1, 1941	50,000.00
50,000	U.S. Savings Bonds Series G dated Jan. 1, 1942	50,000.00
50,000	U.S. Savings Bonds Series G dated July 1, 1942	50,000.00
100,000	U.S. Savings Bonds Series G dated Feb. 1, 1943	100,000.00
100,000	U.S. Savings Bonds Series G dated Jan. 1, 1944	100,000.00
200 shs.	Allied Chemical & Dye	43,047.65
300 shs.	American Chiclé	25,616.02
1,000 shs.	American Telephone & Telegraph	156,933.49
500 shs.	Atchison, Topeka & Santa Fe Ry.	48,783.52
200 shs.	Bethlehem Steel 7 pfd	23,670.46
2,000 shs.	Boston Edison Co.	85,416.45
500 shs.	Central Hanover Bank & Trust Co.	47,500.00
1,000 shs.	Chase National Bank, N.Y.	57,769.74
1,000 shs.	Chesapeake & Ohio Ry.	44,150.60
2,000 shs.	Commonwealth Edison	58,926.60
500 shs.	Connecticut Gas & Coke Securities cum pfd	24,250.00
2,000 shs.	Connecticut Light & Power	73,072.50
900 shs.	Consolidated Edison of N.Y.	56,388.16
1,000 shs.	Consolidated Edison of N.Y. \$5 cum pfd	98,112.50
1,000 shs.	Continental Insurance	38,318.50
300 shs.	Dow Chemical 4 pfd Series A	31,500.00
500 shs.	E. I. duPont deNemours & Co. \$4.50 cum pfd	63,076.50
300 shs.	Eastman Kodak	45,916.61
1,000 shs.	General Electric	42,872.00
1,000 shs.	General Motors	48,864.53
500 shs.	General Motors \$5 pfd	62,976.00
200 shs.	Goodyear Tire & Rubber 5 pfd	20,770.60
100 shs.	Guaranty Trust Co., N.Y.	35,025.20
1,050 shs.	Hartford Electric Light	56,670.12
300 shs.	Ingersoll Rand	29,418.95
232 shs.	International Business Machines	28,177.21
500 shs.	International Harvester	20,990.70
300 shs.	International Nickel 7 pfd	40,280.40
500 shs.	International Nickel of Canada	20,286.20
500 shs.	Kennecott Copper	23,122.34
500 shs.	Liggett & Myers Tobacco	33,835.56
1,400 shs.	Marconi Wireless Telegraph Co. of America Stamped	.20
1,000 shs.	Montgomery Ward Co.	40,567.50
100 shs.	New Haven Water Co.	5,000.00
500 shs.	New York Trust	45,107.75
500 shs.	Norfolk & Western Ry.	79,075.00
170 shs.	Northern States Pwr 5% pfd	19,509.00
1,000 shs.	Pacific Gas & Electric 6% pfd	37,018.77
300 shs.	Phoenix Insurance	23,838.01
1,000 shs.	Scovill Mfg. Co.	40,605.85

## General Hospital Society of Connecticut

500 shs.	Sears Roebuck	39,213.73
1,000 shs.	Standard Oil of California	42,643.38
1,000 shs.	Standard Oil of New Jersey	46,849.84
1,000 shs.	Stanley Works	50,991.25
1,000 shs.	Texas Co.	57,524.00
1,000 shs.	Torrington Co.	25,120.83
150 shs.	Travelers Insurance Co.	65,846.50
500 shs.	Underwood Elliott Fisher	32,750.27
1,000 shs.	Union Carbide & Carbon	64,705.31
500 shs.	Union Electric of Missouri \$4.50 pfd	52,525.00
4,134 shs.	United Illuminating	78,279.80
500 shs.	United Shoe Machinery	35,161.40
1,000 shs.	F. W. Woolworth	39,650.31
	Total	<u>\$4,126,928.61</u>

## Real Estate Mortgages

Margaret M. Barraco, June 8, 1943	3,250.00
Robert M. Nesbit (now Wm. L. Beers and Thomas J. Ryan, Receivers for Rosehurst Farms, Inc.) April 3, 1913	2,802.50
Samuel Bonoff and Minnie S. Merriam (now Antonio and Tomasino Dadio) July 20, 1925	3,000.00
Marks and Dora Levy (now Guisepinna Damore) July 16, 1891	450.00
Gaetano Fresilli et ux April 1, 1938	1,260.00
A. and M. Fusco May 21, 1926	4,885.00
Amadeo and Carmela Guida June 21, 1939	1,200.00
Jack Halprin Inc., April 27, 1940	12,000.00
Mary Weigel (Guaranteed by Home Title Ins. Co.) (now Robert J. and Francis M. Higgins) July 14, 1921, extended to July 1, 1936	4,421.25
John and Bertha Miller (now Michael T. and Bertha E. Jordan) March 18, 1929	1,300.00
Violet M. Judson and Daisy H. Mager, Oct. 26, 1937	2,675.00
Gottfried Kallert (now Herbert W. Kallert et als) Aug. 3, 1921	3,300.00
Charles and Mary Konop (now Pasquale and Philomena Conenza) Oct. 25, 1928	3,900.00
Leo A. Lagor et ux April 9, 1930	860.00
Gerald J. and Delia B. McDermott (formerly Andrea Marino) July 12, 1928	5,450.00
Yale and George Oppenheim, July 18, 1939	10,850.00
Frieda L. Svirsky (now Orlando and Josephine Perna, August 21, 1930	2,530.00
Susan Polo, January 11, 1934	2,640.00
Francis J. and Elizabeth M. Roche, July 23, 1928	1,900.00
Jacob Caplan (now Celia C. Rosenberg) May 31, 1918	2,700.00
Jacob Salovitz, March 11, 1930	3,000.00
Stole Seland, June 5, 1940	4,800.00
Philip Di Siervi, September 18, 1933	1,770.00
Jackson C. Voss, July 17, 1928	4,250.00
Anna Ripa, March 18, 1919	2,500.00
An undivided one-fifth interest in a \$7,750 mortgage note of John W. Greco dated November 15, 1927, \$1,550.00 inventoried at (This note is one of two notes secured by first mortgage originally \$17,500 now \$15,500 on property at 15 College Street, New Haven, now of Fred J. Maher)	1,240.00
\$2,513.34 Participation in mortgage: Rosenberg and Caplan, dated February 19, 1923, for \$150,000 originally, now for \$145,000	2,513.34
Total	<u>\$ 91,447.09</u>

Real Estate

115-121 Court Street, New Haven, Conn. acquired by deed in lieu of foreclosure of \$65,000 Loyal Order of Moose mortgage	\$ 73,406.97
	<u>\$ 73,406.97</u>

SUMMARY

Stocks and bonds	\$4,126,928.61
Real estate mortgages	91,447.09
Real estate	73,406.97
Total	<u>\$4,291,782.67</u>

ENDOWMENT FUNDS AND FUNDS  
FUNCTIONING AS ENDOWMENT

JUNE 30, 1944

<i>Funds</i>	<i>Income Purposes</i>	<i>Principal Amounts</i>
Francis Bacon	Orthopedic equipment	\$ 5,011.32
Mary S. Beach	Relief of needy	66,114.70
Hannah J. Winchester Bennett	Dispensary	25,000.00
Lucy H. Boardman	Administration	64,818.29
Dr. William L. Bradley	General	5,000.00
Charles F. Brooker	General	53,446.50
Frederick L. Dibble	Medical books	250.15
Annie R. Winchester Dye	General	16,789.64
Edwin Foote Memorial	Free bed	152,471.43
Ellsworth I. Foote	Social service	22,528.53
Ellen M. Gifford	Free bed	50,885.69
Ellen M. Gifford Executors	Poor patients	240,999.18
Clarence R. Hooker	General	58,026.69
Justus S. Hotchkiss	General	50,011.34
William H. Hotchkiss	General	25,000.00
Samuel E. Merwin	Care of grounds	701.96
Henry C. White	General	7,727.80
Emily M. Fitch	Children	250,000.00
Anna Fuller	General	50,000.00
Jeannie Taylor Kingsley	General	100,000.00
Rose Porter	Children	5,000.00
Donald W. Porter Memorial	Children	2,821.00
Simon Silverthau Fund	General	50,000.00
Stiles Free Bed	Free Bed	106,928.62
Sarah L. Winchester	Tuberculosis	546,255.56
Sarah L. Winchester, legacy under Will	Tuberculosis	685,215.36
William Wirt Winchester	Tuberculosis	1,196,746.87
Free Beds		861,814.32
Unrestricted		450,522.49
Compensation		6,049.99
Public liability		6,869.79
Care of sick nurses		5,024.58
Funds in suspense		1,500.00
		<u>\$5,169,531.80</u>

# CHANGES IN ENDOWMENT FUNDS AND FUNDS FUNCTIONING AS ENDOWMENT

DURING YEAR ENDED JUNE 30, 1944

The Stiles free bed fund:		
Balance at beginning of year		\$ 100,691.65
Amount received from Trustee of Estate of Mary D. Stiles	\$ 111.97	
Restoration from proceeds of sale of 125 shares of I. L. Stiles & Son Brick Company stock of amount previously charged off on this stock	6,125.00	6,236.97
		\$ 106,928.62
Balance at end of year		
William Wirt Winchester fund:		
Balance at beginning of year		\$1,092,572.05
Income from funds' investments:		
Sarah L. Winchester fund	19,253.59	
Sarah L. Winchester, legacy under Will	24,151.42	
William Wirt Winchester fund	37,639.72	
		81,044.73
Rent from United States Government	125,814.96	
		206,859.69
Maintenance expense, etc., less sundry income of \$1,296	64,017.13	
		142,842.56
Other expense and charges:		
New Haven Hospital and Dispensary, for tuberculosis care, etc.	38,667.74	104,174.82
		\$1,196,746.87
Balance at end of year		
Free bed funds:		
Balance at beginning of year		\$ 774,257.48
Amounts received under the Will of George L. Fox, to add to the endowment of the Levi Goodell Fox and the Elizabeth Hamlin Fox free bed funds and for the establishment of the Simeon J. Fox and Arthur Ward Fox free bed fund	25,548.65	
Legacy received under the Will of Frank D. Wetmore to establish the Cynthia Ann Tracy Wetmore Fund for endowment of a free room for patients referred by The Visiting Nurses' Association	60,000.00	
Final distribution received on account of one-third of the residue of the Estate of Horatio M. Reynolds, to add to the endowment of free beds as a memorial to his wife, Maud Trowbridge Reynolds	2,008.19	87,556.84
		\$ 861,814.32
Balance at end of year		

*General Hospital Society of Connecticut*

Unrestricted funds:			
Balance at beginning of year		\$	326,729.15
Unrestricted legacy received under the Wills of:			
Carolina Bronson Farnam	\$	50,000.00	
Elizabeth W. Farnam		58,793.34	
Gift received from Frederick F. Brewster of \$15,000 of The General Hospital Society of Connecticut First Mortgage 5 Per Cent Bonds due October 1, 1944	15,000.00		123,793.34
			<hr/>
Balance at end of year		\$	450,522.49
<hr/>			
Compensation fund:			
Balance at beginning of year		\$	6,317.21
Professional care of employees, charged to the fund	973.20		
Less:			
Income from investments appor- tioned to the fund	\$225.98		
Charges to:			
New Haven Hospital expense	360.00		
William Wirt Winchester fund principal	120.00	705.98	267.22
			<hr/>
Balance at end of year		\$	6,049.99
<hr/>			
Public liability fund:			
Balance at beginning of year		\$	6,036.01
Income from investments apportioned to fund	233.78		
Charge to New Haven Hospital expense	600.00		833.78
			<hr/>
Balance at end of year		\$	6,869.79
			<hr/>



## FREE BED FUNDS

JUNE 30, 1944

<i>Year</i>	<i>Name</i>	<i>Amount</i>
1870	The Philip Maret	\$155,480.37
1874	The Henry Farnam	5,000.00
1874	The William-Fitch	5,000.00
1874	The James E. English	5,000.00
1878	The Ellen M. Gifford	5,000.00
1881-83	The Henry Bronson—two beds	10,000.00
1883	The Thanksgiving	5,000.00
1885	The Henry Hotchkiss Memorial	5,000.00
1886	The William O. Armstrong	5,000.00
1886	The Mary Webster Southgate Trowbridge Memorial	5,000.00
1888-90	The Dr. Thomas Wells Memorial	5,000.00
1886	The Dwight Place Church, six months	2,500.00
1888	The Mary P. Wade of Trinity Church	5,000.00
1888	The Home for the Friendless, six months	2,500.00
1890	The Hermanus M. Welch	5,000.00
1890	The James E. English	25,854.68
1892	The George Thomas Smith	5,000.00
1886-1900	The Trinity Church	5,000.00
1901	The Wyllys Atwater Memorial	10,000.00
1901	The Rose Porter Memorial, six months	5,000.00
1904	The Henry Baldwin Harrison	9,712.11
1904	The Mrs. Henry Baldwin Harrison	9,712.10
1905	The Sarah Barney Harrison	9,712.10
1905	The New Haven Grays	10,000.00
1905	The Isaphene Hillhouse, six months	5,000.00
1906	The Organized Charities	10,000.00
1908	The Hoadley B. Ives, six months	5,000.00
1909	The John W. Mansfield, six months	5,000.00
1911	The Evelina J. Jones, six months	5,000.00
1911	The Henry Eld Fund, in perpetuity	5,000.00
1912	The Leonard J. Sanford and Anna Cutler Memorial	9,720.00
1913-1918	The Woman's Seamen's Friend Society of Connecticut	10,000.00
1913	The George W. L. Benedict	10,000.00
1914	The Paul Bed, six months	5,000.00
1915	The Bassett Free Beds, two beds	20,000.00
1915	The George W. Mallory, six months	5,000.00
1917	The Edwin B. Bowditch	10,000.00
1918	The Alfred Blakeslee	10,000.00
1920	The Henry Walter Benedict	10,000.00
1920	The Frank Walter Benedict	10,000.00
1920-41	The Helen and John T. Manson	14,317.94
1920	The Hannah Jane Winchester Bennett	12,000.00
1921	The Nathan Howell Sanford Memorial	10,000.00
1921	The Julia Sanford Memorial	10,000.00
1921	The Harriet Atwater Memorial	10,000.00
1923	The Deane Free Bed	9,258.16
1924	The Whitney Free Bed	10,400.00
1925	The Leete Bed	15,000.00
1926	The John H. Hopson	5,000.00

## FREE BED FUNDS (continued)

1926	The Fannie W. Keyes Memorial	10,000.00
1926	The Ellen Treadway Yeckley Cot	5,000.00
1927	The Abigail Bradley Hunt	9,147.57
1927	The Timothy A. Hunt	9,147.57
1928	The Ellen M. Gifford's Executors' Fund	5,000.00
1929-39	The Mary E. Baldwin	22,422.89
1930	The Joseph T. Hotchkiss & Mary L. Hotchkiss	15,000.00
1930-31	The Idalina Darrow	7,307.61
1931	The Grace Salisbury Foote	21,081.16
1931	The Loring W. Andrews	10,000.00
1931	The Dr. Jonathan Edwards	10,000.00
1931	The Charles Henry Collins	10,000.00
1931	The Adelaide Bushnell Curtiss Memorial	5,000.00
1932-43	The Levi Goodell Fox	10,000.00
1932-43	The Elizabeth Hamlin Fox	10,000.00
1937	The Julia A. Leete Newhall	7,500.00
1937	The George T. and Julia Leete Newhall	7,500.00
1940	The William Townsend Hayes	10,000.00
1941	The Maud Trowbridge Reynolds	46,508.19
1942	The Margarette Elford Dean Trowbridge	15,000.00
1942	The Henry F. English	10,000.00
1943-44	The Simeon J. Fox and Arthur Ward Fox	9,767.23

NOTE: Gifts of money by will or otherwise, designated Free Bed Funds, are held as part of the permanent endowment funds of the New Haven Hospital. Such a gift will pay the hospital expenses of one or more poor and deserving patients for a length of time proportionate to the amount of income produced by the principal sum of the gift.

# THE NEW HAVEN HOSPITAL

## HONOR ROLL

NOVEMBER 1, 1944

Edward A. Abbey, M.D.	Charles Cheney, M.D.	Rita Fiddes, R.N.
Richard N. Abbott, M.D.	Lawrence Cianciolo, D.D.S.	John W. Findley, M.D.
Ralph D. Alley, M.D.	Louie N. Claiborn, M.D.	Alvis Fischer
Harry Ambrogewich	Donald Clark	James Flett, Jr., M.D.
Marion Anderson, R.N.	Clement C. Clarke, M.D.	Elsie Forte, R.N.
Paul Anderson	Winthrop I. Clarke, M.D.	James C. Fox, Jr., M.D.
Emeline Armstrong	George A. Cohn, M.D.	Sheldon Fox, M.D.
Nicholas Barraco	Nancy Cole, R.N.	Irving Friedman, M.D.
Kathleen Barrett, R.N.	Charles Comfort, M.D.	Roland Frye
Alexander L. Bassin, M.D.	Robert W. Cordwell, M.D.	Russell V. Fuldner, M.D.
Rose Basso, R.N.	Ruth Cox, R.N.	Horace T. Gardner, Jr., M.D.
Barbara Bastow, R.N.	Branch Craige, Jr., M.D.	Benjamin Gendel, M.D.
Philip A. Bearg, M.D.	Clair B. Crampton, M.D.	William J. German, M.D.
Lucille Beckwith, R.N.	Margaret Dabbs, R.N.	Irene Gervasi
Grace Behrents, R.N.	Michael D'Amico, M.D.	Raymond W. Gillespie, M.D.
W. Randal Bell, M.D.	Eleanor Davis, R.N.	Anne Gladding, R.N.
Robert P. Berneike, M.D.	Jachin B. Davis, M.D.	Herbert Gleason
Dorothy Best, R.N.	William W. Dean, M.D.	Allan V. N. Goodyer, M.D.
Courtney C. Bishop, M.D.	Guido A. DeBlasio, M.D.	Ruth Grannick
Doris Black, R.N.	Michael Del Giudice	Joseph Grillo
Samuel P. W. Black, M.D.	Rose DelMonico, R.N.	Muriel Guggolz, R.N.
Tessie Bodon, R.N.	Edna Demaree, R.N.	Francis P. Guida, M.D.
Alicia Bogan, R.N.	Ruth Deming	Gove Hambridge
William Bower	Henry Demler	Grace Hampson, R.N.
Dorothy Bowie, R.N.	Lani DePages	Paul S. Hansen, M.D.
Mathew Bramante	Joseph D'Esopo, M.D.	Daniel B. Hardenbergh, M.D.
Charles A. Breck, M.D.	Emily De Vito, R.N.	Paul A. Harper, M.D.
Doris Bresnahan, R.N.	Robert F. Dine, M.D.	Benedict Harris, M.D.
Lloyd Brown, M.D.	Nancy Dines	Benjamin Harris
Warren T. Brown, M.D.	Mark Dodge, M.D.	Rupert Havill, M.D.
William Bruckner, M.D.	John W. Donald, M.D.	Lester Hawley
Willard E. Buckley, M.D.	Rita Donohue, R.N.	Frank Hayden
Esther Budd, R.N.	Marion Doran, R.N.	Marshall Hayes
Olga Budzik, R.N.	Eleanor Dowd, R.N.	Patrick Healey
John H. Bumstead, M.D.	Marion Draper, R.N.	Orvan W. Hess, M.D.
O. Whitmore Burtner, M.D.	Hilda Drignat, R.N.	John Higgins
Tom Cairney	William Dunleavy, D.D.S.	George Hoffman
David Campbell	Dorothy Dworak, R.N.	Wilson E. Hughes, M.D.
Sherburne Campbell, M.D.	Marion Eignor, R.N.	Lillian Hunt, R.N.
Norton Canfield, M.D.	Frederick Embree	James Huyck, M.D.
Pasquel Cangiano	Joseph I. Epstein, M.D.	Ann Hyland, R.N.
Edward Cappiello	Anna Ernandez, R.N.	Frank Inguaggiato
Robert I. Carlson, M.D.	L. Allan Erskine, M.D.	Harold Jacobson, M.D.
Lucy Carrington, R.N.	Conrad Fadel	Arnold H. Jansen, M.D.
Irene Carroll, R.N.	Charles A. Falzone, M.D.	Howard Jenkins
Eugene Caruso	Rocko M. Fasanella, M.D.	
Eleanor Carver, R.N.	Sidney Feyder, M.D.	
Bernard Chalecki	Frank Fiasconaro	

## THE NEW HAVEN HOSPITAL

## HONOR ROLL

(continued)

- Kathleen Johnson  
 Wilbur D. Johnston, M.D.  
 William L. Johnston, M.D.  
 Olden Jones  
 Robert H. Jordan, M.D.  
 Norberta Joyce, R.N.  
 Harriet Judd, R.N.  
 Francis Kane  
 Elizabeth Keefe, R.N.  
 Georgiana Kirkland, R.N.  
 William H. Kirschner, Jr.,  
 D.D.S.  
 Gerald Klatskin, M.D.  
 Harry E. Klebanoff, M.D.  
 Wolfgang W. Klemperer,  
 M.D.  
 Gordon Konnor  
 Morris Y. Krosnick  
 Jean LaBrake, R.N.  
 Helen Langer, R.N.  
 Clarence Langlois  
 Paul H. Lavietes, M.D.  
 Sarah Lenda, R.N.  
 Stephen Lengel  
 Leone Libby, R.N.  
 Averill A. Liebow, M.D.  
 Gustaf E. Lindskog, M.D.  
 Sidney Liswood  
 Ralph J. Littwin, M.D.  
 Raymond Lombardo  
 Henry Longobardi  
 Veronica Lucey, R.N.  
 Paul R. Lurie, M.D.  
 Walter Lutz, M.D.  
 Lawrence G. M. Lydon,  
 M.D.  
 Eva Belle McCabe, R.N.  
 Helen McCormack, R.N.  
 Evelyn McDermott, R.N.  
 Elizabeth MacDiarmid,  
 R.N.  
 Ralph McDonnell, M.D.  
 Margot McFarland, R.N.  
 Ward MacFarland, M.D.  
 Elizabeth McLaughlin,  
 R.N.  
 Andrew J. McQueeney,  
 M.D.
- James W. Major, M.D.  
 Arthur W. Mallory  
 Joseph Martin  
 Leo Mathon  
 George Mautte  
 James A. Mendillo, D.D.S.  
 John K. Meneely, M.D.  
 Henry Merriman, M.D.  
 William Metcalf, M.D.  
 Lawrence I. Michel, M.D.  
 Joseph Mignone, M.D.  
 Priscilla Mills, R.N.  
 Stephanie Misuk, R.N.  
 Edwin A. Moody, M.D.  
 John Morgan  
 Margaret Moss, R.N.  
 Charles R. Mowery, Jr.,  
 M.D.  
 George Mulligan  
 James Mulvey  
 Shirley K. Munson, R.N.  
 Margaret Neilson, R.N.  
 George Nemo  
 Samuel Nesbitt, M.D.  
 Conrad W. Newberg,  
 D.D.S.  
 Jacob Nodelman, M.D.  
 Paul Norback  
 Milton C. Oakes, M.D.  
 Denis S. O'Connor, M.D.  
 John O'Hara  
 E. Rudolf Ohle, M.D.  
 Margaret O'Keefe, R.N.  
 Robert W. Ollayos, M.D.  
 Christine O'Neill, R.N.  
 Ashley W. Oughterson,  
 M.D.  
 James Owens  
 Martha Page, R.N.  
 W. Randolph Page, M.D.  
 Robert Parker  
 Gioacchino S. Parrella,  
 M.D.  
 Maxwell Pasternak, M.D.  
 Ralph Patmore  
 Adolphus W. Patten  
 Helen Pauluccy, R.N.  
 James Peck, Jr.
- Constant Pellens  
 William L. Peltz, M.D.  
 William S. Perham, M.D.  
 Elroy R. Peterson, M.D.  
 Edmond Petrilli  
 Frances Platek  
 Jules A. Plaut, M.D.  
 Frederick A. Post, M.D.  
 Albert A. Povilon, D.D.S.  
 Rose Pritz, R.N.  
 Theodore N. Pullman,  
 M.D.  
 Mayo R. Purple, M.D.  
 Everett S. Rademacher,  
 M.D.  
 Edwiga Rafalowska, R.N.  
 Miriam Rand, R.N.  
 Dorothea Rasnoer, R.N.  
 Leonard Rau  
 Frederick Redlich, M.D.  
 Wilbur Reed  
 Irene Reichenberg, R.N.  
 Loretta Reilly, R.N.  
 Carol Reynolds, R.N.  
 Edmund Richards  
 Clarence L. Robbins, M.D.  
 Frederick W. Roberts,  
 M.D.  
 Helen Roberts, R.N.  
 Shirley Roberts, R.N.  
 Benjamin R. Robinson, Jr.,  
 M.D.  
 James H. Root, Jr., M.D.  
 Arthur Rosebush  
 Jack D. Rosenbaum, M.D.  
 Oscar Roth, M.D.  
 Jane Russell, R.N.  
 Jerry Rutter  
 Joseph F. Sadusk, Jr., M.D.  
 Julien Samson  
 Nicky Santaniello  
 Perry Saxe  
 Robert J. Schaffer, M.D.  
 Charles F. Scholhamer,  
 M.D.  
 Paul C. Schumacher, M.D.  
 Thomas E. Shaffer, M.D.  
 Stanley Shepard

## THE NEW HAVEN HOSPITAL

## HONOR ROLL

*(continued)*

Hayes Sheppard	Floryan Suchodolski	Louis G. Welt, M.D.
David N. Shulman, M.D.	Josephine Swanson, R.N.	Helen Wersbe, R.N.
Charlotte Simpson	Herbert Tabor, M.D.	Frances Wheelock, R.N.
Ethan A. H. Sims, M.D.	Max Taffel, M.D.	Jane Whitaker
Harold Slaughter	Hoyt C. Taylor, M.D.	William W. Wiefert, M.D.
Sally Slusarzyk, R.N.	Robert H. Taylor	Carl H. Wies, M.D.
John Smerznak	Anna Telford, R.N.	Frederick A. Wies, M.D.
Frederick F. Smith, M.D.	Paul Tetor	Frederick C. Wilcox, Jr., M.D.
Jeanne Smith, R.N.	Anthony J. Thompson, M.D.	Marjorie Wilkinson, R.N.
Lawrence Smith	Lloyd J. Thompson, M.D.	Dorothy Williams, R.N.
Mary Smith, R.N.	Richard C. Thompson, M.D.	Hugh Williams
Robert Smith	Nicholas A. Tierney, M.D.	William R. Wilson, M.D.
Robert M. Smith, M.D.	Priscilla Tracy, R.N.	Charles E. Windus, M.D.
Joseph Sokal, M.D.	Irene Trundy	Dee Yoho, R.N.
Francis Spellman	Jane Tyson, R.N.	Lillian Yoksa, R.N.
Samuel Spinner, M.D.	William Tyson	Richard W. Yore, M.D.
Nicholas M. Stahl, M.D.	L. Chester Underwood, M.D.	Joseph Yotch
Merritt W. Stark, M.D.	Edward Varneau	Fred Zaff, M.D.
Josephine Steiner, R.N.	Vincent Vermooten, M.D.	Adelheid Zerrell
Marvin A. Stevens, M.D.	Grace Vida, R.N.	Harry M. Zimmerman, M.D.
Stuart S. Stevenson, M.D.	Elizabeth Wacht, R.N.	Anthony Zovickian, M.D.
Luther M. Strayer, Jr., M.D.	Marianne Welker, R.N.	Helen Zygmunt, R.N.
Jackson H. Stuckey, M.D.		

## FORMS OF BEQUEST

- I. I give and bequeath to the General Hospital Society of Connecticut, a corporation organized under a charter granted by the General Assembly of the State of Connecticut, and located in the Town of New Haven, the sum of \$ . . . . .
  
- II. I give and bequeath to the General Hospital Society of Connecticut, a corporation organized under a charter granted by the General Assembly of the State of Connecticut, and located in the Town of New Haven, the sum of \$ . . . . . which shall be held and used as a fund to be known as the (Name) Fund, of which the income shall be applied to and used for the charitable objects and purposes of the corporation.







