

9-2002

# The Tadpole of *Proceratophrys Avelinoi* (Anura: Leptodactylidae)

Rafael O. de Sá  
University of Richmond, rdesa@richmond.edu

José A. Langone

Follow this and additional works at: <http://scholarship.richmond.edu/biology-faculty-publications>

 Part of the [Developmental Biology Commons](#), [Population Biology Commons](#), and the [Terrestrial and Aquatic Ecology Commons](#)

## Recommended Citation

de Sá, Rafael O., and José A. Langone. "The Tadpole of *Proceratophrys Avelinoi* (Anura: Leptodactylidae)." *Journal of Herpetology* 36, no. 3 (September 2002): 490-94. doi:10.2307/1566195.

This Article is brought to you for free and open access by the Biology at UR Scholarship Repository. It has been accepted for inclusion in Biology Faculty Publications by an authorized administrator of UR Scholarship Repository. For more information, please contact [scholarshiprepository@richmond.edu](mailto:scholarshiprepository@richmond.edu).

*Journal of Herpetology*, Vol. 36, No. 3, pp. 490–494, 2002  
Copyright 2002 Society for the Study of Amphibians and Reptiles

### The Tadpole of *Proceratophrys avelinoi* (Anura: Leptodactylidae)

RAFAEL O. DE SÁ<sup>1</sup> AND JOSÉ A. LANGONE

*Department of Biology, University of Richmond, Richmond, Virginia 23173, USA, and Departamento de Herpetología, Museo Nacional de Historia Natural, CC 399, Montevideo, 11.000, Uruguay*

The genus *Proceratophrys* is poorly known. It consists of 14 currently recognized species (Frost, 2000) of medium-sized frogs distributed from northeastern Argentina and Paraguay to southeast Amazonia (Rondonia State), eastern and southern Brazil. *Proceratophrys avelinoi* was described from Misiones, Argentina (Mercadal de Barrio and Barrio, 1993). The larval stage of this species is unknown. Herein, we describe the tadpole and the characteristics of the internal oral anatomy of *P. avelinoi* using scanning electron microscopy (SEM).

*Proceratophrys avelinoi* tadpoles ( $N = 6$ ) were collected at Estancia Hidromineral Santa Clara, Munic. Guarapuava, Paraná State, Brasil, in June 1998. The tadpoles were in a pond, about 5.0 cm deep; the surface of the pond was covered with aquatic vegetation. This pond was located about 100 m from the margin of the Jordão River. The specimens are deposited at the Museu de Historia Natural Capão da Imbuia, Curitiba, Paraná, Brasil, with number MNHCI 4198. Spec-

---

<sup>1</sup> Corresponding Author. E-mail: rdesa@richmond.edu

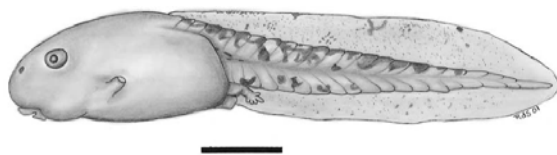


FIG. 1. Tadpole of *Proceratophrys avelinoi*, stage 36 MNHCI 4198. Bar = 5.0 mm.

imens were fixed in 10% formalin (commercial grade) and staged following Gosner (1960). Tadpoles were preserved during development, but two larvae were kept alive until they completed metamorphosis for species identification.

Measurements and terminology follow Lavilla and Scrocchi (1986) and Altig and McDiarmid (1999). Measurements were made using a Mitutoyo digital calliper under a binocular microscope with an ocular grid; average and standard deviation ( $\bar{x}$ ,  $\pm$  SD) are given in the description. The description of larval external morphology is based on examination of specimens in Gosner's stages 30, 35, and 36. Tadpole illustration is based on a Gosner's stage 36 specimen. A tadpole in Gosner's stage 36 was dissected for SEM analysis. The specimen was prepared as follows: ultrasonically cleaned for 15 min, fixed in 3–4% solution of glutaraldehyde for 2 h at room temperature (rt), followed by three 15 min washes with 0.1 M phosphate buffer, postfixed for 2 h in a 1% solution of osmium tetroxide rt, three 15-min washes in 0.1 M phosphate buffer were repeated. Subsequently, samples were dehydrated using 15-min changes of the following graded ethanol series: 35%, 50%, 70%, 80%, 95%, and three 100% changes. Specimens were critical point dried in CO<sub>2</sub>, mounted on aluminum stubs and sputter coated with gold/palladium, 22 nanometers thick, using a Hummer VII sputtering system. Internal oral anatomy was examined in a Hitachi S-2300 scanning electron microscope at 15 kV, 20 kV and 25 kV and photographed using Polaroid 55 positive/negative film. Morphological features were recorded using the methodology presented by Wassersug (1976) and Wassersug and Heyer (1988).

**Tadpole Description.**—*Proceratophrys avelinoi* tadpoles have an elliptical, slightly depressed, and elongated body (Fig. 1). In dorsal and lateral views, the snout is rounded; in lateral view, the snout slopes gradually anteriorly toward the oral disc. The eyes are large and directed laterally; eyes are positioned dorsolaterally on the body. The external nares are located half way between the eyes and the tip of the snout. Narial openings are small, rounded, laterodorsally positioned and have a well-defined marginal rim. A low papilla, with a dark pigment spot on its tip, is present on the inner (= medial) margin of the each nares. Tail fins are low, dorsal and ventral fins nearly parallel the tail musculature. Dorsal fin is slightly higher than ventral fin. The dorsal fin originates at the tail-body junction, and the ventral fin originates at the posterior ventral terminus of the body. Tail fins slope to a broadly rounded tail tip. Tail musculature extends to the posterior tip of the tail. The spiracle is sinistral and has a mid-lateral opening. The vent tube is large; vent tube and vent tube's apertures are dextrally placed relatively to the ventral fin.

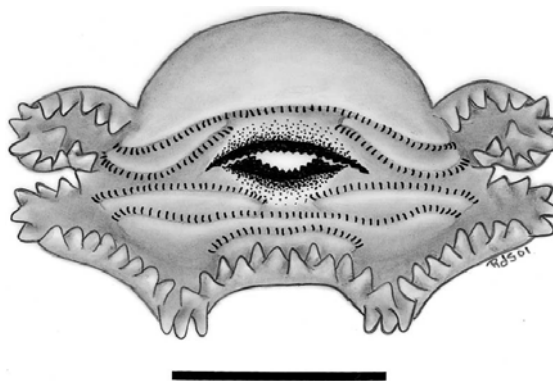


FIG. 2. Oral disk of *Proceratophrys avelinoi*, stage 36 MNHCI 4198. Bar = 1.0 mm.

**Measurements in Millimeters (N = 4).**—Sensu Altig and McDiarmid (1999): body length ( $\bar{x}$   $\pm$  SD): = 12.2  $\pm$  0.62; tail muscle height: 3.1  $\pm$  0.3; fin height: 5.8  $\pm$  0.54; sensu Lavilla and Scrocchi (1986): total length: 32.6  $\pm$  3.2; eye diameter: 1.1  $\pm$  0.05; interorbital distance: 2.6  $\pm$  0.35; body maximum width: 7.9  $\pm$  0.64; body width at eyes: 6.1  $\pm$  0.37; body width at nostrils: 4.2  $\pm$  0.06; body maximum height: 6.5  $\pm$  0.72; rostrospiracular distance: 6.6  $\pm$  0.34; frontonasal distance: 2.2  $\pm$  0.24; naso-ocular distance: 1.1  $\pm$  0.21; nostril diameter: 0.38  $\pm$  0.05; eye diameter: 1.1  $\pm$  0.05; inter-narial distance: 1.6  $\pm$  0.13; width of oral disc: 2.2  $\pm$  0.17; width of dorsolabial gap: 1.4  $\pm$  0.12.

**Coloration of Fixed Specimens.**—Specimens in 10% formalin are overall brown, with tail musculature being light yellowish. The myotomes of the caudal musculature are visible, but they are not strongly marked. The tail fins and tail musculature are speckled with dark melanophores. Large, irregular-shaped, dark brown spots are scattered over the tail musculature, particularly close to the dorsal edge of the epaxial musculature. Melanophores are more abundant on the dorsal fin than on the ventral fin. The dorsal and dorsolateral surfaces of the body are homogeneously brown, grading continuously to a light brown and almost translucent ventral surface.

**Oral Disc.**—The oral disc is positioned ventrally, deeply emarginate and has two large folds of the posterior labium. The oral disc has a single row of large and conical marginal papillae with blunt tips (Fig. 2). This row of marginal papillae has a large dorsal gap occupying most of the upper labium. Furthermore, two sets of three slightly larger papillae project from the lower labium at the level of labial folds. These larger papillae are not entirely aligned with the row of marginal papillae; when the oral disc is closed, these papillae seem to form a second, outer, row of papillae. This arrangement is not quite visible in an open, extended, oral disc where it appears as a single row of marginal papillae. A single submarginal papilla is found laterally on the upper labium. The labial tooth row formula (Altig, 1970) is 2(2)/3(1), with the lower third row being the shortest. Upper and lower jaw sheaths are wide, pigmented for about one-third of their width, and their edge is serrated.

**Internal Oral Anatomy.**—Oral roof overall semicircular, with a narrow pre-narial arena. A transverse

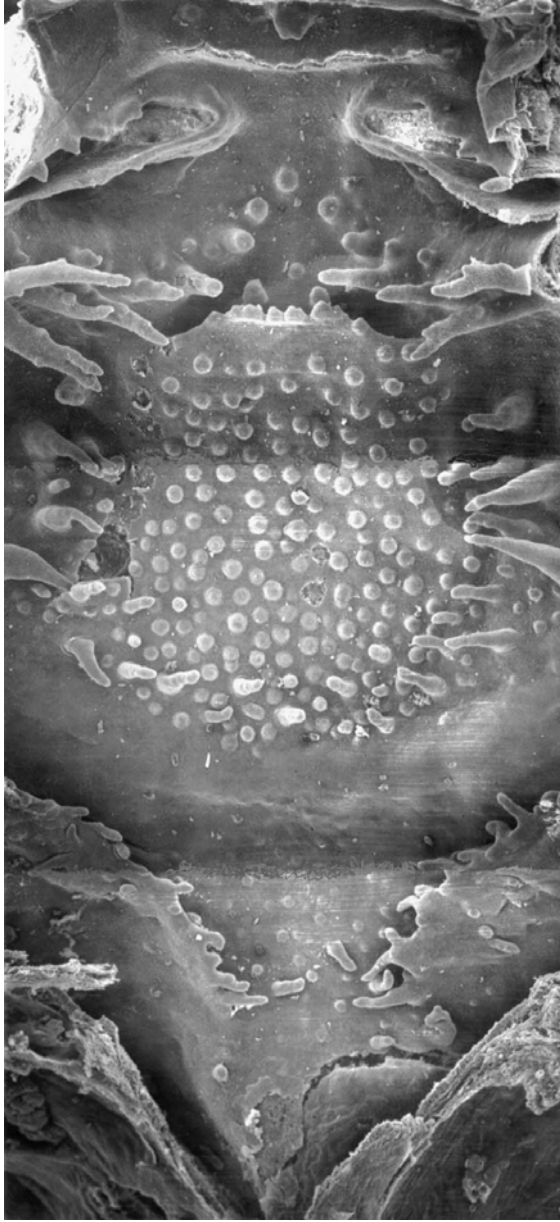


FIG. 3. SEM micrograph of roof of oral cavity of *Proceratophrys avelinoi*; Gosner Stage 36.

ridge is present in the prenarial arena, immediately in front of the internal nares. Nares are wide, obliquely oriented, and placed about one-fourth way back on buccal roof (Fig. 3). The anterior edge of each naris bears four or five prenarial papillae, whereas the posterior edge has a posteriorly convex narial valve, with a very small narial-valve projection. Postnarial arena complex. Two rows of postnarial papillae form a triangle in the postnarial arena, the apex of this triangle lies behind and between the internal nares. The postnarial papillae increase gradually in size posteriorly. Three or four additional papillae are found within this triangle of postnarial papillae. Median ridge large, trapezoidal, with large, pointed, papillae on its free edge. Lateral ridge papillae elaborate, oriented trans-

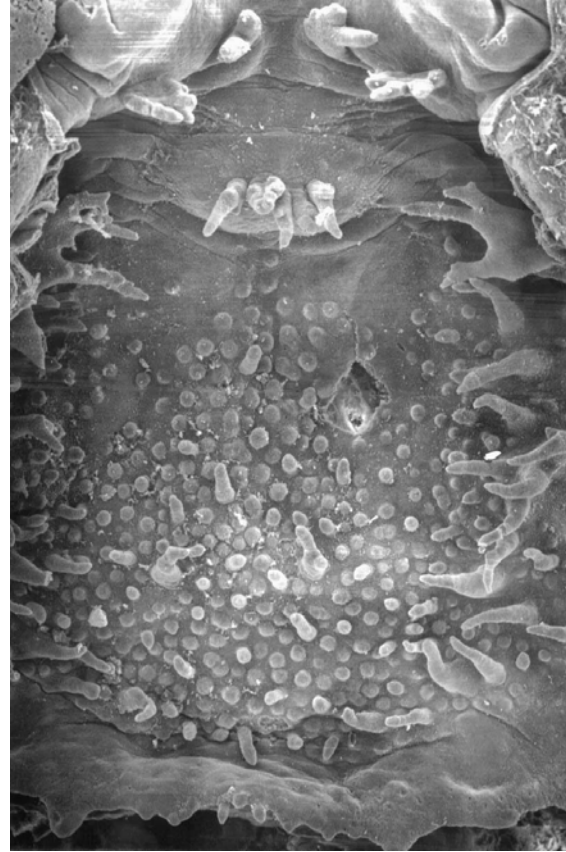


FIG. 4. SEM micrograph of floor of oral cavity of *Proceratophrys avelinoi*; Gosner Stage 36.

versely on each side of the median ridge and with long, fingerlike, papillae projecting medially. Buccal roof arena (BRA) rounded and bounded anteriorly by the median ridge and latero-posteriorly by about 30 elongate and pointed papillae, with largest papillae placed most laterally. An even field of large pustulations is present within the BRA. Dorsal velum long, curving gradually toward the midline, with a clear medial gap and a papillate margin. Glandular zone poorly defined or absent. Buccal floor overall triangular and broad (Fig. 4). Two pairs of infralabial papillae present, the most anterior pair is slightly oblique but almost perpendicular to the transversely oriented second pair. The first pair of infralabial papillae is deeply forked, with a larger posterior branch. The second infralabial papilla is divided into four blunt papillae connected basally. Four long and attenuate lingual papillae are present. Buccal floor arena (BFA) is U-shaped and bounded by about 20–25 long, attenuate, papillae. Large pustulations are homogeneously scattered within the BFA, a few smaller papillae are present among these pustulations. Velar surface free, long, and with continuous slightly jagged posterior margin. Median notch and secretory pits absent. Gill filters of moderate size with an average filter mesh.

The larvae of eight only of the 14 species of *Proceratophrys* have been previously described. These are *Proceratophrys appendiculata* (Peixoto and Gonçalves da

Cruz, 1980), *Proceratophrys boiei* (Izecksohn et al., 1979), *Proceratophrys cururu* (Eterovik and Sazima, 1998), *Proceratophrys concavitimpanum* (Giaretta et al., 2000), *Proceratophrys laticeps* (Peixoto et al., 1981), *Proceratophrys moehringi* (Weygoldt and Peixoto, 1985), *Proceratophrys palustris* (Giaretta and Sazima, 1993), and *Proceratophrys precrenulata* (Peixoto et al., 1984, = *Proceratophrys schirchi* sensu Caramaschi and Velosa, 1997).

The larva of *P. avelinoi* is similar to other *Proceratophrys* larvae. *Proceratophrys* larvae have a slightly depressed body, more markedly depressed in *P. cururu*, *P. laticeps*, and *P. moehringi*. Tail length is about 1.5× body length in all larvae except *P. concavitimpanum*, *P. laticeps* and *P. moehringi*, where tail length is almost twice body length. The oral disk of *P. avelinoi* is surrounded by a single row of marginal papillae, although two sets of slightly larger papillae seem to form a second row projecting from the lower labium. This character has not been previously reported; however, this can be attributed to previous reports describing and illustrating an expanded, open, oral disk, in which the arrangement described herein for *P. avelinoi* is not clearly visible. A closer look at the figures of *P. boiei* (Fig. 4, Izecksohn et al., 1979) and *P. laticeps* (Fig. 4, Peixoto et al., 1981) do seem to mark larger papillae in the same position as those described for *P. avelinoi*.

Submarginal papillae are not reported for other species of *Proceratophrys*, except *P. concavitimpanum* that has submarginal papillae in the lower labium and posterolaterally. Furthermore, for *P. boiei* a "few" submarginal papillae were reported present ("... e unas poucas mais internas," Izecksohn et al., 1979), and for *P. cururu*, submarginal papillae were reported as "scattered laterally," but were not illustrated (Eterovik and Sazima, 1998). In *P. avelinoi*, we found a single submarginal papillae located laterally on the upper labium. Additional data on *Proceratophrys* larvae were presented in tables comparing *Proceratophrys* and *Odontophrynus* tadpoles by Rossa-Feres and Jim (1996) and Brandão and Batista (2000).

Besides the differences noted above, all *Proceratophrys* larvae, including, *P. avelinoi*, exhibit the following characters: (1) oval body; (2) low caudal fins; (3) ventral mouth; (4) sinistral spiracle with midlateral opening; (5) dextral vent tube and vent tube's opening; (6) labial tooth row formula 2(2)/3(1) (except *P. appendiculata*, which has a 2/3(1) formula); (7) oral disk emarginate and with two folds of the posterior labium; (8) a single row of marginal papillae with a large rostral gap; and (9) serrated, keratinized jaw sheaths.

The information available on the internal oral anatomy of *Proceratophrys* is limited to that reported for *P. appendiculata* and *P. boiei* (Wassersug and Heyer, 1988). The gill plates and density of filter mesh in *P. avelinoi* are similar to those of *P. boiei*, suggesting a generalized microphagous feeding diet. A few common characteristics in the three species are (1) large attenuate papillae present in the buccal roof and floor; (2) BFA and BRA with extensive amount of postulations; (3) four, long, lingual papillae; (4) large and elaborate lateral ridge papillae; (5) dorsal velum curving medially; and (6) glandular zone poorly defined or absent.

*Acknowledgments.*—This work was partially funded through National Science Foundation award 9815787.

We are thankful to Lic. Magno Segalla, who brought these specimens to our attention.

#### LITERATURE CITED

- ALTIG, R. 1970. A key to the tadpoles of the continental United States and Canada. *Herpetologica* 26:180–207.
- ALTIG, R., AND R. W. MCDIARMID. 1999. Body plan: development and morphology. In R. W. McDiarmid and R. Altig (eds.), *Tadpoles: The Biology of Anuran Larvae*, pp. 24–51. University of Chicago Press, Chicago.
- BRANDÃO, R. A., AND C. G. BATISTA. 2000. Descrição to girino de *Odontophrynus salvatori* (Anura, Leptodactylidae). *Iheringia, Série do Zoologia, Porto Alegre* 89:165–170.
- CARAMASCHI, U., AND A. VELOSA. 1997. *Stombus precranulatus* Miranda-Ribeiro, 1937, a junior synonym of *Proceratophrys schirchi* (Miranda-Ribeiro, 1937) (Anura:Leptodactylidae). *Copeia* 1997:629–631.
- FROST, D. R. (ED.). 2000. Amphibian Species of the World: An Online Reference. V2.20 (1 September 2000).
- ETEROVICK, P. C., AND I. SAZIMA. 1998. New species of *Proceratophrys* (Anura: Leptodactylidae) from southeastern Brazil. *Copeia* 1998:159–164.
- GIARETTA, A. A., AND I. SAZIMA. 1993. Nova espécie de *Proceratophrys* Mir. Rib. do Sul de Minas Gerais, Brasil (Amphibia, Anura, Leptodactylidae). *Revista Brasileira de Biologia* 53:13–19.
- GIARETTA, A. A., P. S. BERNARDE AND M. N. C. KOKUBUM. 2000. A new species of *Proceratophrys* (Anura: Leptodactylidae) from the Amazon rain forest. *Journal of Herpetology* 34:173–178.
- GOSNER, K. L. 1960. A simplified table for staging anuran embryos and larvae with notes on identification. *Herpetologica* 16:183–190.
- IZECKSOHN, E., C. A. G. CRUZ, AND O. L. PEIXOTO. 1979. Notas sobre o girino de *Proceratophrys boiei* (Wied) (Amphibia, Anura, Leptodactylidae). *Revista Brasileira de Biologia* 39:233–236.
- LAVILLA, E. O., AND G. J. SCROCCHI. 1986. Morfometría larval de los generos de Telmatobinae (Anura: Leptodactylidae) de Argentina y Chile. *Physis* 44: 39–43.
- MERCADAL DE BARRIO, I. T., AND ALFONSO BARRIO. 1993. Una nueva especie de *Proceratophrys* (Leptodactylidae) del nordeste de Argentina. *Amphibia-Reptilia* 14:13–18.
- PEIXOTO, O. L., AND C. A. G. DA CRUZ. 1980. Observações sobre a larva de *Proceratophrys appendiculata* (Günther, 1873) (Amphibia, Anura, Leptodactylidae). *Revista Brasileira de Biologia* 40:491–493.
- PEIXOTO, O. L., E. IZECKSOHN, AND C. A. G. DA CRUZ. 1981. Notas sobre o girino de *Proceratophrys laticeps* Izecksohn & Peixoto (Amphibia, Anura, Leptodactylidae). *Revista Brasileira de Biologia* 41:553–555.
- PEIXOTO, O. L., C. A. G. DA CRUZ, E. IZECKSOHN, AND S. P. CARVALHO E SILVA. 1984. Notas sobre o girino de *Proceratophrys precranulata* (Amphibia, Anura, Leptodactylidae). *Arquivos Universidade Federal Rural do Rio de Janeiro, Itaguaí* 7:83–86.
- ROSSA-FERES, D., AND J. JIM. 1996. Tadpole of *Odontophrynus moratoi* (Anura: Leptodactylidae). *Journal of Herpetology* 30:536–539.

- WASSERSUG, R. J. 1976. Oral morphology of anuran larvae: terminology and general description. Occasional Papers of the Museum of Natural History, University of Kansas 48:1-23.
- WASSERSUG, R. J., AND W. R. HEYER. 1988. A survey of internal oral features of leptodactyloid larvae (Amphibia: Anura). Smithsonian Contributions to Zoology 457:1-99.
- WEYGOLDT, P., AND O. L. PEIXOTO. 1985. A new species of horned toad (*Proceratophrys*) from Espirito Santo, Brazil (Amphibia: Salientia: Leptodactylidae). Senckenbergiana Biologica 66:1-8.

Accepted 20 October 2001.