

Yale University

## EliScholar – A Digital Platform for Scholarly Publishing at Yale

---

Yale School of Nursing Alumni Newsletters and  
Magazines

School of Nursing

---

Winter 12-1-1951

# YUSN Alumnae Bulletin

Yale School of Nursing

Follow this and additional works at: [http://elischolar.library.yale.edu/ysn\\_alumninews](http://elischolar.library.yale.edu/ysn_alumninews)

---

### Recommended Citation

Yale School of Nursing, "YUSN Alumnae Bulletin" (1951). *Yale School of Nursing Alumni Newsletters and Magazines*. Book 72.  
[http://elischolar.library.yale.edu/ysn\\_alumninews/72](http://elischolar.library.yale.edu/ysn_alumninews/72)

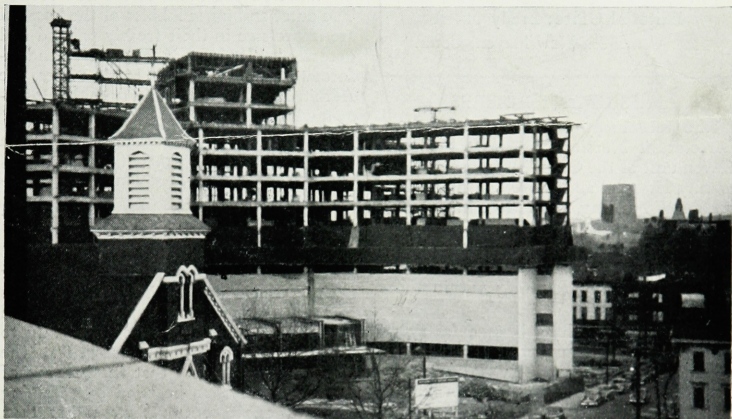
This Article is brought to you for free and open access by the School of Nursing at EliScholar – A Digital Platform for Scholarly Publishing at Yale. It has been accepted for inclusion in Yale School of Nursing Alumni Newsletters and Magazines by an authorized administrator of EliScholar – A Digital Platform for Scholarly Publishing at Yale. For more information, please contact [elischolar@yale.edu](mailto:elischolar@yale.edu).

# Yale University School of Nursing ALUMNAE BULLETIN

Vol. VI, No. 3

New Haven, Connecticut

December, 1951



View of new unit of Grace-New Haven Community Hospital taken from roof of New Haven unit



The newly completed two-story laboratory for cancer research at Yale University on site once marked as tennis courts, on Congress Avenue

## THE BULLETIN BOARD

Madeline McKenna '47 Editor

Eleanor King '32  
Elizabeth S. Bixler '27 } Advisory  
Elizabeth Simmons '29 } Committee

Editorial Office: Brady 114 A  
310 Cedar St., New Haven, Conn.

### MISS GRANT RETIRES

The retirement of Miss Laura Grant, Director of Nursing Service at the New Haven unit of the Grace-New Haven Community Hospital and Professor in the Yale School of Nursing, took place in October. It was accomplished quietly and finally and Miss Grant's gifts in organization were once more evidenced by her ability to leave without confusion resulting within those of us left behind.

Miss Grant has long been a far-seeing member of the nursing profession who has given of herself unstintingly and generously. Many of us have benefitted in innumerable situations from receiving her sage advice.

Feeling that it was but a small token of their regard for her, those who had worked under Miss Grant in a supervisory capacity presented her with a large sterling silver tray. This bore the engraved signatures of the present staff and of as many former supervisors as could be contacted. The members of the hospital Advisory Board requested that they be permitted to add their names to the already imposing list of signatures.

### MISS RYLE COMES

The New Haven unit of the Grace-New Haven Community Hospital announces the appointment of Miss Anne Ryle to succeed Miss Laura Grant as Director of Nursing Service. Miss Ryle is a graduate of the Yale School of Nursing, Class of 1933.

Miss Ryle was employed in the New Haven Hospital from 1933 to 1948, holding the positions of Head Nurse, Surgical Supervisor, Administrative Assistant to Supplies and Equipment, Assistant Director to Department of Nursing.

In 1948, Miss Ryle received her M.S. in Nursing Administration. In 1949 she became Director of Department of Nursing and Director of the School of Nursing at Grasslands Hospitals, Valhalla, New York.

### NEW LOOK INSIDE

"What do you think of the new look?" The outer and inner lobbies of the hospital are impressive in their freshly painted and decorated splendor. The reception and information booth, the Cashier's offices, the Admitting offices, the hallway to the Boardman wing, the basement hallways are bright and new in modern design and light colors.

If you haven't returned for some time, you had better hurry, for you will be carrying out-dated pictures in your memories.

### FEEES BY CONTRIBUTION

A spirited discussion at the morning business session of the Y.U.S.N.A.A. was centered around the ever-present problem of how to obtain funds needed yearly to finance the many Alumnae activities. The decision by vote was that in the year of 1952 a new system be tried of obtaining funds through contributions rather than by fixed dues. It was decided that any contribution would be accepted as a membership fee.

A letter will be sent to all alumnae from the Chairman of the Finance Committee, Miss Tina DiMaggio, explaining in detail why the measure was proposed and how the new system will function. It was the opinion of a majority present that a wider representation of voting alumnae members would be obtained through the abolishment of a required sum, and that no loss but a possible gain would result in a continued support of present members, as well as the addition of new members. Naturally, such a change in the financial system of the Y.U.S.N.A.A. will need the loyal support of all to ensure the adequate coverage of our proposed 1952 budget.

Will we be able to stand up to our budget next year, look it in the eye and say, "Well met"? That question is one we will ask of ourselves, and one we will answer for ourselves. For example, in the large circle of expenditures, a large wedge is listed under: Salaries.



Those of us who have been fortunate enough to work with Mrs. Elizabeth Simmons, '29, our quietly efficient Executive Secretary, know how indispensable her services are to Alumnae activities.

The sum allotted for the salary of the Executive Secretary is small recompense for the part-time duties. Many a burden has been lifted from already busy alumnae who formerly carried the secretarial burdens, which necessarily increase as the Association grows.

If we—each and every one of us—give freely according to our individual abilities to do so, this very necessary position in our organization may be continued. The thought must be kept in mind that in order to meet the budget estimate of 1952, an average contribution of \$5 must be given by as many members as possible.

#### REPEAT HOSPITALIZATION

During the month of September, Miss Annie W. Goodrich was forced to return to the hospital for a brief sojourn, but her many friends will be reassured to learn that Miss Goodrich is convalescing successfully at her home.

#### COMMENCEMENT, JUNE 1951

On Saturday, June 9, 1951, at approximately 9:30 A. M., a rising murmur of feminine voices amid the clatter of many coffee cups marked the opening of the annual meeting of the Y.U.S.N.A.A. in the newly decorated Alumnae Room. "Long-lost" friends were gently coaxed into the auditorium where a lively business session ensued.

After registrations were tallied, it was found that 96 alumnae members were present.

Total A.W.G. Fund.....\$11,962.38

#### Y.U.S.N.A.A. PROPOSED BUDGET

January - December 1952

Estimated Receipts:

Alumnae Association Dues.....\$3,000

Estimated Expenditures:

Salaries—52%

Executive secretary ..... 1,500

Clerical assistant ..... 50

Office Expenses—12%	
Auditing and Insurance.....	15
Bank charge .....	5
Supplies .....	175
Postage .....	100
Telephone .....	35
Class Secretary's Bureau.....	25
Contingency—7% .....	200
Publications—18%	
Bulletin .....	300
Directory .....	250
Entertainment—4%	
Dinner for graduating class.....	75
Flowers .....	50
Contributions—5%	
Medical library .....	50
Public relations .....	50
Travel and convention.....	50
Miscellaneous—2% .....	70
	\$3,000

A discussion concerning the disposition of the Annie W. Goodrich Fund followed during which members were asked to consider how the fund could be utilized in the most worthwhile manner. It was also hoped that all alumnae members would give freely of their suggestions and opinions.

Dean Elizabeth S. Bixler reported that:

- the loan fund was falling low.
- approximately 40 post cards were received as a result of folders describing nursing opportunities for college graduates which were sent out to leading colleges.
- the 4-week elective experience for senior students is increasingly popular to the students.
- a change was made in the psychiatric affiliation during this fall. Once again, students are to be sent to Butler Hospital in Rhode Island, and to Norwich State Hospital in Connecticut for their 12 weeks of experience.
- the new interior decoration of the Alumnae Room done in blond maple was being enjoyed by all.
- the students were pleased with the new furnishings and renovations in the main living room of the Sterling Dormitory.

The hospital was responsible for such additions as the small conversational groupings of furniture, the new piano, the modernistic lamps, and even the swivelled TV chairs. All of these items present a fresh, light, cheery atmosphere.

- at the annual meeting of the Collegiate Schools of Nursing, Yale faculty acted as hostesses to the group.
- during the past year, the YSN sponsored Institutes in Poliomyelitis, Tuberculosis, Obstetrics, Mental Health, Care of the Premature Infant, and Industrial Nursing.
- it might be profitable to form a Committee of the Alumnae which would be represented by geographic location and class distribution to work with the YSN Dean and faculty. This Committee could meet yearly in an advisory capacity during Commencement week. It might weld a stronger bond between old and new alumnae and students.

Miss King reluctantly reported that Miss Annie W. Goodrich would be unable to be present at the dinner in the evening, and that this would be the first time Miss Goodrich would miss this climax of the day's activities. Needless to say, those who had planned to attend the dinner heard this news with the deepest regret because Miss Goodrich's youthful mind and spirit had always been such a vital part in such a gathering.

After luncheon, which was purposely informally scheduled so that old friends might chat at will, members were offered a choice of participating in: tours of the hospital, seeing slides of Rooming-In, enjoying a chuckle with a color film titled "The Life of a Yale '53er," joining in the discussion of changes in the curriculum, and

viewing a demonstration of a nursing procedure.

From 2:30 to 4:30 P. M., Dean Bixler held "Open House with Tea" on the lovely terrace of her home at 145 Deepwood Drive in Hamden.

In the President's Room at Woolsey Hall—a room well-suited for such an occasion as this—the Annual Alumnae Dinner proved to be a gay and stimulating one. After the first spontaneous greetings were given and classes were fairly well grouped at their own tables, it was noted that the number present from each reuning class was:

- All of '26 (7 of 9 doing some nursing)
- 10 of '31 (class total—28)
- 16 of '36 (class total—40)
- 11 of '41 (class total—46)
- 11 of '46 (class total—62)
- 5 of '46W (class total—50)
- 5 of '51 (class total—51)

The reuning classes shared the spotlight of the evening. The class of 1926 presented to the Seminar room:

1. Coffee Service
2. Cups and Saucers
3. Spoons
4. Fund for replacements

The class of 1931 presented to Nathan Smith Hall:

1. Mongrammed Silver Tea Service
2. Large Silver Tray

The Class of 1936 expressed their desire to give as a group to the Annie W. Goodrich Fund. They really exuded pride as they gleefully announced that a rapid exchange of figures had shown that the Class could vouch for 84 children from their 28 married classmates.