

## Yale University EliScholar – A Digital Platform for Scholarly Publishing at Yale

---

Yale University Library Annual Reports

Library Publications

---

2011

# YUL Annual Report; 2010-2011

Yale University Library

Follow this and additional works at: [http://elischolar.library.yale.edu/yul\\_annual-reports](http://elischolar.library.yale.edu/yul_annual-reports)

 Part of the [Library and Information Science Commons](#)

---

### Recommended Citation

Yale University Library, "YUL Annual Report; 2010-2011" (2011). *Yale University Library Annual Reports*. 5.  
[http://elischolar.library.yale.edu/yul\\_annual-reports/5](http://elischolar.library.yale.edu/yul_annual-reports/5)

This Newsletter is brought to you for free and open access by the Library Publications at EliScholar – A Digital Platform for Scholarly Publishing at Yale. It has been accepted for inclusion in Yale University Library Annual Reports by an authorized administrator of EliScholar – A Digital Platform for Scholarly Publishing at Yale. For more information, please contact [elischolar@yale.edu](mailto:elischolar@yale.edu).

# Yale UNIVERSITY LIBRARY

ANNUAL REPORT • 2010–11



DEDICATED LEADERSHIP

# YALE UNIVERSITY LIBRARY EXHIBITS 2010–11

## BEINECKE RARE BOOK & MANUSCRIPT LIBRARY

Lee Wulff: "Each fly is a dream we cast out to fool fish"  
Treasures Old & New: Recent Additions to Beinecke Collections  
God Save the King: Music from the British Royal Court, 1770–1837  
Doonesbury in a Time of War  
Objects & Evidence  
Psyche & Muse: Creative Entanglements with the  
Science of the Soul

## CUSHING/WHITNEY MEDICAL LIBRARY

Fin de Siècle Visual Culture of Medicine

## DIVINITY LIBRARY

Versions and Translations of the Bible: An Exhibit  
Commemorating the 400th Anniversary of the King James  
Version

## IRVING S. GILMORE MUSIC LIBRARY

Robert Schumann: Composer, Critic, and Correspondent  
Histories of Music  
Encountering the Other in the Music Library's Special Collections

## ROBERT B. HAAS FAMILY ARTS LIBRARY

Material Meets Metaphor: A Half-Century of Book Art by Richard  
Minsky  
Collections in Conversation II  
Structure Explored: Architectural Themes in the Book Arts

## KLINE SCIENCE LIBRARY

Bioinformatics Research Being Carried Out in the Gerstein Lab,  
Yale University

## LEWIS WALPOLE LIBRARY

Collection Highlights: Prints, Drawings, and Illustrated Books  
Illustrious Heads: Portrait Prints as History

## LILLIAN GOLDMAN LAW LIBRARY

Superheroes in Court! Lawyers, Law and Comic Books  
Mexico Celebrates its Bicentennial 1810–2010  
The 50th Anniversary of the Civil Rights Act of 1960  
(1960–2010)/Congress Advances Voting Rights in an Era  
Marked by Bold Citizen Activism

Life and Law in Early Modern England

## STERLING MEMORIAL LIBRARY

Yale and New Haven, Yale and the World: Postcards from the Yale  
University Library Collections

Scrolls to Cell Phones and Beyond: Publishing Technology and  
the Experience of the Written Text in Japan

America Transformed: From George Washington's American  
Atlas to the 21st Century.

Let Books be your Pleasure Gardens: Modern Artists illustrate  
Jewish Texts

Annual Alumni Exhibit

Coeducation at Yale

Chinese Rare Books in the Yale Collections

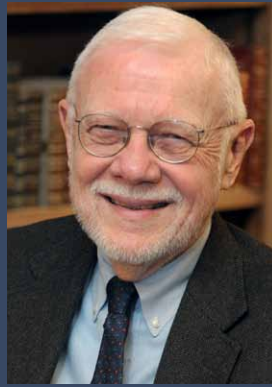


Richard Minsky reading from "Freedom of Choice" to students. This 2009 work by Minsky pushes his "material meets metaphor" philosophy to the extreme by engaging the reader's full body in the reading experience. The hand-bound book, chained to the electric chair built by Minsky, contains poems by Lucie Brock-Broido about various forms of death, including electrocution.

Front cover: This inside view of Yale's Beinecke Rare Book & Manuscript Library is dedicated to the memory of Professor Frank Turner, former Director of the Beinecke and University Librarian. Photograph courtesy of Michael Marsland.



Frank Turner



Jon Butler



E.C. Schroeder

## UNIVERSITY LIBRARIAN'S REPORT 2010–11

The year that ran from July 1, 2010, to June 30, 2011, was one of transitions, challenges, and achievements for the Yale University Library. The Yale community will remember these twelve months as a time of unprecedented change for the Library, in which a sequence of three University Librarians was named to lead the Library in a single year.

The year began with Frank Turner (GRD'71) serving as Interim University Librarian, a position that he had held since January 2010. In addition to his role as Interim University Librarian, Frank continued to lead the Beinecke Rare Book & Manuscript Library as its Director and to hold the position of John Hay Whitney Professor in the Yale History Department. By the late summer, at the recommendation of the search committee charged with nominating a new University Librarian, President Richard C. Levin named Frank to a five-year term as University Librarian beginning in September. Frank assumed his permanent duties with gusto by occupying the University Librarian's office in Sterling Memorial Library three days a week, while continuing in the Beinecke Director's office the other two days. He was committed to ensuring that the Library move forward as the principal academic service unit at Yale, and frequently observed that "the Library can never have too many friends." In assuming the new role, Frank drew on his long tenure at Yale, which included service

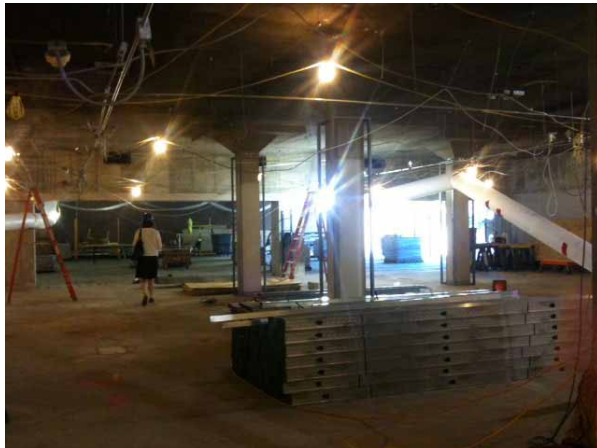
as Provost, and on his extensive network of colleagues throughout the faculty and administration.

It was with shock and disbelief that the Library and the University learned on November 11 that Frank had died suddenly of a pulmonary embolism. President Levin made the announcement that day to library staff assembled in the Sterling Library nave, joined by Provost Peter Salovey and other officers of the University. Five days later, hundreds of library staff, faculty, students, university administrators, and members of the community filled Trinity Episcopal Church on the New Haven Green for the funeral. Joining Frank's widow, the Reverend Ellen Tillotson, the community remembered and eulogized Frank's life and his substantial contributions to Yale. Four months later, on March 26, friends and colleagues of Frank gathered again, this time in Battell Chapel, for a memorial service that recalled the many ways in which Frank had touched those around him, as scholar, teacher, mentor, administrator. Provost Salovey introduced the speakers, who included E.C. Schroeder and Regina (Kenny) Marone from the Library. The service ended with a reading of Frank's favorite passage from Charles Darwin's *On the Origin of Species*, a fitting memorial for a renowned scholar of Victorian intellectual history.

For the ongoing leadership of the Library, President Levin turned to another senior faculty member in the

history department, Professor Jon Butler, who began his service as Acting University Librarian on December 1. Only a few months earlier, Jon had completed his six-year tenure as Dean of the Graduate School, and he had just started a year of research leave to work on his next book. Jon returned from his leave, having barely begun it, to assume leadership of the Library. His love of the Library, his dedication to its collections, and his admiration and respect for library staff were apparent from the beginning of his tenure. Meanwhile, the search committee for a new University Librarian, chaired by Professor Pericles Lewis, reconvened and began their work again. On March 21, 2011, President Levin announced that Susan Gibbons, Vice-Provost and the Dean of River Campus Libraries at the University of Rochester, had accepted the position of University Librarian at Yale and would begin her appointment on July 1.

In December we learned that Edwin (E.C.) Schroeder had been appointed to succeed Frank Turner as the Director of the Beinecke Library beginning on January 1. Library staff greeted with enthusiasm the announcement that E.C., a longtime and trusted colleague, was taking the helm of one of the world's preeminent rare book and special collections libraries. E.C. began his career in the Library in 1989 as a rare book cataloger and had served as Head of Technical Services in the Beinecke Library since 2004.



The basement of the Kline Biology tower is gutted to make way for the CSSSI renovations.

Another transition was the passing of Morris Cohen, who died on December 18, 2010, at the age of 83. Law School Librarian from 1981 to 1991, Morris was greatly respected in law school circles as a librarian, scholar, and educator.

All of these transitions occurred in a year in which the economic downturn that began in 2008 continued to force budget reductions throughout the University. Library staff worked hard and thought creatively of ways to continue to provide excellent library services and build outstanding collections within a framework of reduced resources and staffing. Another unexpected challenge came from the weather, in the form of one of the snowiest winters in Connecticut in recent history. Following a major snowstorm on January 12 that dropped over twelve inches of snow on New Haven, the Library put together protocols for notifying users and staff whenever inclement weather affected library hours. Two subsequent heavy snowstorms, on January 27 and February 2, caused delayed openings of most libraries, the first time that snow had closed significant parts of the University in many years.

In the midst of all these transitions, many notable achievements occurred throughout the Library this year. On January 20 the new International Room opened in Sterling Memorial Library, in space that formerly housed the Arts of the Book Collection. Arts of the Book became part of Arts Special Collections in the Robert B. Haas Family Arts Library on York Street, and the vacated room in Sterling presented an opportunity for the Library to work with the Office of the University Secretary to create a space that showcases the global reach of Yale's academic programs, teaching, research activities, and collections. The International Room is frequently reserved for lectures and academic classes, and it is a popular study location whenever there are no scheduled events. Other building-related projects included the continued planning for a combined Center for Science and Social Science Information (CSSSI). The architectural firm Studio ABK was contracted to design the new Center in the space occupied by the Kline Science Library (KSL) in the basement of the Kline Biology Tower. To enable that renovation, the KSL collections were reduced through transfers to the Library Shelving Facility. In June, the remaining KSL collections and the staff moved into the Social Science Library at 140 Prospect Street in order to vacate the Kline Biology Tower for the renovation. The Mudd Library enabling project also continued throughout

the year, as library staff and the Donohue Group Inc. cataloged and processed collections for transfer to the Library Shelving Facility. The goal of the Mudd project is to empty the library completely so that it can be demolished to clear space for the construction of two new undergraduate colleges.

A new version of Orbis, the Yale Library's online catalog, debuted on February 7. New Orbis represents a new generation of library catalogs that introduce displays and features that are familiar to users of other web-based search tools. For example, New Orbis has the capability to link to online content from Google Books and other sources, to display images of book covers, and to filter search results once a search is completed.

On January 24, Harvard University and the Massachusetts Institute of Technology announced that they would join the Borrow Direct consortium during the following summer. Borrow Direct is a service that allows users to search for and request books directly from other participating libraries, when the book is not held at Yale or the Yale copy is in use. Readers consistently rank Borrow Direct as one of the most popular services that the Library provides; this year our readers received 32,688 books through Borrow Direct. The service began in 1999 as the CoPY project with Columbia, Yale, and the University of Pennsylvania. In 2002, Borrow Direct expanded to include Brown, Dartmouth, Cornell, and Princeton. With the addition of Harvard,

the service now includes all eight Ivy League institutions; MIT represents the first expansion of the service beyond the Ivies.

As paper newspaper readership has decreased generally over the years, so also has the use of the newspapers that were collected and shelved in the Newspaper Reading Room in Sterling Memorial Library. This year subject specialists and staff in Access Services and Acquisitions worked together to integrate the active newspapers collection into the periodicals in the Franke Family Periodical Reading Room, also in Sterling. To increase electronic access to newspapers, the Library subscribed to PressDisplay, which provides access to more than 200 newspapers from more than 55 countries.

Grateful thanks go to the leadership and staff of the Yale University Library for a remarkable year, in spite of some tremendous challenges. As the adage states at the entrance of Sterling Memorial Library, "The Library is at the heart of the University", and we could easily add that at the heart of the Library, is a dedicated and resilient staff. We also greatly appreciate the support of our donors and friends, and the special support we received from Yale's administration during this time.

*In the absence of a permanent University Librarian, this year's report was written by Kendall Crilly, Associate University Librarian for Program Development and Research.*

## PROFESSIONAL STAFF APPOINTMENTS

The following professional staff joined the Library or moved into new roles in 2010–11:

**Julian Aiken** *Access Services Librarian, Law Library*

**Dominique Bourassa** *Arrangement and Description Archivist  
Catalog Department*

**Sahr Conway-Lanz** *Arrangement and Description Archivist  
Manuscripts and Archives*

**Molly Dotson** *Bookplate Project Archivist, Arts Library*

**Tobias Glaza** *Assistant Executive Editor, Yale Indian Papers  
Project, Lewis Walpole Library*

**Michelle Hudson** *Data Librarian, Social Science Library*

**Catherine Kellett** *Catalog Librarian, Law Library*

**Caitlyn Lam** *Electronic Resources Support Librarian,  
Electronic Collections*

**Michael Lotstein** *Arrangement and Description Archivist,  
Manuscripts and Archives*

**Colin McCaffrey** *Classics Librarian, Classics Library*

**Melanie Norton** *Document Delivery Librarian, Medical Library*

**Mary Richardson** *Project Archivist, Divinity Special Collections,  
Divinity Library*

**Michael VanderHeijden** *Faculty Services Reference Librarian,  
Law Library*

## SELECTED NOTABLE ACQUISITIONS



Johann Sebastian Bach (1685–1750) Chromatic fantasy and fugue (BWV 903), from a copyist's manuscript titled "Suiten und Fugen" ca. 1780, purchased in 2010 by the Music Library.

### AFRICAN COLLECTION

3 rare historical sound recordings of Mussolini relating to Italy's "glorious" 1930's campaigns in Abyssinia.

A Mogadishu Italian colonial administration photo album.

150 postcards for the collection of the Italian/Abyssinian Occupation propaganda postcards, the largest such collection in North America.

1:50,000 maps from Rwanda.

10 original artists' posters from the 2010 World Cup in South Africa.

### BABYLONIAN COLLECTION

151 monographs and serials.

An Ur III cuneiform tablet and its clay 'envelope.' From Mr. and Mrs. Burrell Fisher.

### BEINECKE RARE BOOK & MANUSCRIPT LIBRARY

Terry Tempest Williams and Bismuth-Lemaitre Papers.

### CLASSICS LIBRARY

*Bulletin of the Institute of Classical Studies* electronic back file.

*Oxford Scholarship Online Classical Studies* January 2011 update.

### DIVINITY LIBRARY

Archives of the Christian Conference of Asia.

### EAST ASIA LIBRARY

*Masaki Motoi Ikebana Collection*. Over 200 volumes related to the art of Japanese flower arrangement, including many beautifully illustrated and privately printed works.

*China Yearbook Full-text Databases Series J*. Extensive electronic database of over 300 statistical yearbooks containing economic and industrial statistics at the national, provincial, and local levels.

*Qing dai shi wen ji hui bian* 清代詩文集彙編. Multi-volume set containing over 4,000 works of literature produced from the late Ming (1368–1644) to the early Republican (1910–1949) period, an essential primary source for the study of the Chinese literary world in the late imperial period.

*Kinema Junpo* キネマ旬報. Donation by Fujita Motohiko of a nearly complete run of the postwar issues (1946–1996) of this seminal Japanese film journal, a key primary source used by scholars in the Japanese film studies program.

*Han 'guk ūi Purhwa, Buddhist paintings of Korea*. A set of 40 volumes purchased to support students and faculty in the History of Art department.

### JUDAICA COLLECTION

*Encyclopedia of Jews in the Islamic World*.

Major expansion of *The Bar-Ilan University Responsa Project* encompassing over three thousand years of Jewish heritage and tradition.

Major expansion of *Otzar HaHochmah* containing more than 50,045 scanned Judaic books.

Several rare Yiddish books printed in the 1920s in the early years of the Soviet Union.

Manuscript of sections of the Hebrew Bible translated into the Judeo-Arabic of Morocco.

Manuscript relating the history of the Jews on the Barbary Coast written in Yiddish in the early 19th century.

### LAW LIBRARY

*Climate Wire* (electronic resource).

*HeinOnline Intellectual Property Law Collection* (electronic resource).

*HeinOnline World Constitutions Illustrated* (electronic resource).

*Making of Modern Law: Primary Sources, 1620–1926* (electronic resource).

*ProQuest Legislative Insight* (electronic resource).

Added 194 titles (211 volumes).

John Trusler's *Concise View of the Common and Statute Law of England* (London, 1780 or 1781), a summary of William Blackstone's Commentaries that once belonged to Alexander Hamilton.

2 of the earliest printed American trial accounts: *The Brief Narrative of the Case and Tryal of John Peter Zenger* (Boston, 1738) and *The Speech of Mr. John Checkley, upon his Tryal* (London, 1738).

7 editions of the works of Joost de Damhoudere (1507–1581), among the most profusely illustrated books in the history of legal literature, including the first edition (Louvain, 1554) of Damhoudere's criminal law manual with its 57 woodcuts, and the only French edition of Damhoudere's civil law handbook (Antwerp, 1572).

A 1567 papal bull, Pope Pius V's prohibition against bullfighting, considered to be a foundational document of the modern animal rights movement.

A set of the *Siete Partidas* (Valladolid, 1587–1588).

A first edition of Henry Finch's *Nomotexnia* (London, 1613).

## PUBLICATIONS, PRESENTATIONS AND PROFESSIONAL ACTIVITIES

### JULIAN AIKEN

“Floating Naked Downstream.” *Connecticut Libraries* (August, 2010).

“That Eureka! Moment.” *Connecticut Libraries* (November, 2010).

### JOHN H. BAKER

*Sources of English Legal History: Private Law to 1750* (2nd ed.). Oxford: Oxford University Press, 2010.

### FEMI CADMUS

“Leveraging a Library Collection through Collaborative Digitization Ventures.” 20 *Trends in Law Library Management and Technology* 15 (2010).

“Things in Common: Challenges of the 19th and 21st Century Librarian.” 14 *Green Bag* 2D 193 (2011).

“Do Employees Have a Right to Happiness?” June Spotlight, Yale Library. Speech at the Faculty Outreach Showcase Showdown at Harvard Law School (January, 2010).

Law Librarians of New England hosted at Yale, Spring Conference. (Coordinator)

### STEPHEN CLARKE

*The Strawberry Hill Press and Its Printing House* (Miscellaneous Antiques). New Haven: Yale University Press, 2011.

### DENNIS CURTIS

*Representing Justice: Invention, Controversy, and Rights in City-states and Democratic Courtrooms*. New Haven: Yale University Press, 2011.

### JASON EISEMAN

“Top 10 Law School Home Pages of 2010.” *Green Bag Almanac & Reader* (2011).

### VICENÇ FELIÚ

“A Closer Look: A Symposium among Legal Historians and Law Librarians to Uncover the Spanish Roots of Louisiana Civil Law.” 38 *International Journal of Legal Information* 295 (2010).

### ECKART FRAHM

“Neo-Babylonian Letters and Contracts from the Eanna Archive.” Yale Oriental Series, Babylonian Texts, Volume XXI, New Haven: Yale University Press, 2011.

### JANET HALLEY

“What is Family Law?: A Genealogy, Part I.” 23 *Yale Journal of Law & the Humanities* 1 (2011).

### RYAN HARRINGTON

“Bibliography of Publications of Morris Cohen.” 103 *Law Library Journal* (2011).

“Making Your Wallflowers: How to Implement the Best Social Media Strategy for your Library.” 15 *AALL Spectrum* 16 (December, 2010).

“Can the FCC Regulate the Internet?” AALL Annual Meeting.

“International Legal Materials.” American Society of International Law. (Editor)

### MICHAEL JURSA

“Neo-Babylonian Letters and Contracts from the Eanna Archive.” Yale Oriental Series, Babylonian Texts, Volume XXI. New Haven: Yale University Press, 2011.

### MARY JANE KELSEY

“How to Help Your Job Hunt and Make Life Easier for the Search Committee.” 15 *AALL Spectrum* 26 (April, 2011).

### DENNIS KIM-PRIETO

“A Closer Look: A Symposium Among Legal Historians and Law Librarians to Uncover the Spanish Roots of Louisiana Civil Law.” 38 *International Journal of Legal Information* 295 (2010).

### TATJANA LORKOVIĆ

“Internships at the Slavic and East European Collection of the Yale University Library.” *Slavic & East European Information Resources*, 12 (2011): 1-16.

“The Past as Prologue: Building Yale University Library’s Slavic and East European Collection from the Beginning of the Twentieth Century until Today. Part One: 1896-1956.” *SOLANUS: International Journal for the Study of the Printed and Written Word in Russia and East-Central Europe*. New Series, 22 (2011): 43-62.

## SELECTED NOTABLE ACQUISITIONS

A copy of *The Federalist* (New York, 1802) that once belonged to Justice William Patterson of the U.S. Supreme Court—a gift of the family of Mark Levy (Law ’75).

27 manuscripts and printed works donated by Lois Montbertrand (Law ’85) documenting the early legal history of Connecticut.

A collection of law-related comic books and original comic art donated by appellate attorney Andrew Korn.

The original artwork for the page in *Detective Comics* no. 439 (March, 1974) showing Batman’s Yale Law School diploma. Donated by the artist Sal Amendola.

### MAP DEPARTMENT

The Vallard atlas, which strengthens the high quality facsimile collection from Molliero.

### IRVING S. GILMORE MUSIC LIBRARY

Paul Hindemith: holograph ms. of five pieces from “Spiel- und Hörschule.” A collection of letters to Mischa Schneider of the Budapest String Quartet.

Additions to the J.R. Johnson and Muzio Clementi papers (1752-1832).

Ms. copy of Mozart’s “Jupiter” Symphony (No. 41, K. 551).

Important 18th-century German manuscript of Bach’s French Suites for key-

board BWV 812-815 & 817, the “Chromatic Fantasia & Fugue” BWV 903, and other pieces, with the title page “Suiten und Fugen von J.S. Bach.”

John Corigliano’s holograph sketch for *One Sweet Morning*.

A significant collection of musical theater scores and libretti, donated by Dena Kaye, the daughter of Sylvia Fine and Danny Kaye.

### SLAVIC AND EAST EUROPEAN COLLECTION

9,644 titles (10,991 volumes), of which 1,478 titles (2,112 volumes) were received on exchange or as gifts. 21 microform titles



## PUBLICATIONS, PRESENTATIONS AND PROFESSIONAL ACTIVITIES

### COLIN MCCAFFREY

Organized and convened programs for two ACRL discussion groups. "Classical, Medieval, and Renaissance Studies" and "Philosophy, Religious Studies, and Theology." ALA Annual Conference.

### KARIN MEDIN

"Digital Age Document Delivery Librarianship." *Journal of Interlibrary Loan, Document Delivery & Electronic Reserve*, 20:3 (2010).

### ANNE MYERS

"It's Not Too Soon to Propose Programs for the Next AALL Annual Meeting." 14 *AALL Spectrum* 34 (July, 2010).

"Philadelphia Freedom: AALL Gathers in Our Nation's Birthplace for the 2011 Annual Meeting in Philadelphia." 15 *AALL Spectrum* 26 (June, 2011).

### TERESA MIGUEL

"A Closer Look: A Symposium Among Legal Historians and Law Librarians to Uncover the Spanish Roots of Louisiana Civil Law." 38 *International Journal of Legal Information* 295 (2010).

"Comparative Law: Academic Perspectives." *International Handbook of Legal Information Management*, p. 297. London: Ashgate, 2011.

"Drug Trafficking and National Security." (Panel moderator) Colombian Student National Conference (April, 2011).

### S. F. C. MILSOM

*Sources of English Legal History: Private Law to 1750* (2nd ed.). Oxford: Oxford University Press, 2010.

### JUDITH RESNIK

*Representing Justice: Invention, Controversy, and Rights in City-states and Democratic Courtrooms*. New Haven: Yale University Press, 2011.

### JAMES SENTER

"Philadelphia Freedom: AALL Gathers in Our Nation's Birthplace for the 2011 Annual Meeting in Philadelphia." 15 *AALL Spectrum* 26 (June, 2011).

### FRED SHAPIRO

"Anonymous Was a Woman." *Yale Alumni Magazine* (January/February, 2011).

"Leveraging a Library Collection through Collaborative Digitization Ventures." 20 *Trends in Law Library Management and Technology* 15 (2010).

"Quotable Harvard." *Harvard Magazine* (March/April, 2011).

"Quotation of the Day." *New York Times* (November 18, 2010).

"You Can Quote Them." *Yale Alumni Magazine* (regular column).

Weekly posting about quotations on *Freakonomics* blog.

### ROGER SKALBECK

"Top 10 Law School Home Pages of 2010." *Green Bag Almanac & Reader* (2011).

### CAMILLA TUBBS

"Bibliography of Publications of Morris Cohen." 103 *Law Library Journal* (2011).  
"Jurisdocs." *Government Documents Special Interest Section of the American Association of Law Libraries*. e-publication. (Editor)

### DANIEL WADE

Represented the Foreign, Comparative, and International Special Interest Section and chaired the Foreign Law Selectors meeting at the CONELL Market Place at the Annual Meeting of the American Association of Law Libraries.

### MIKE WIDENER

"American Trial Collections Highlight Yale's Recent Acquisitions." 16 *LH&RB: Newsletter of the Legal History & Rare Books Special Interest Section of the American Association of Law Libraries* 31 (Fall, 2010).

"Outstanding Rare Book Acquisitions at the Yale Law Library." 17 *LH&RB: Newsletter of the Legal History & Rare Books Special Interest Section of the American Association of Law Libraries* 47 (Spring/Summer, 2011).

"Supreme Court Bobbleheads Find a Home at Yale Law Library." 33 *Southwestern Archivist* 2 (May, 2010).

## SELECTED NOTABLE ACQUISITIONS

170 audio items

72 films and videos

The complete run of the Soviet/Russian newspaper *Izvestiia*.

A subscription to *Online Databases of Russian/NIS Publications*.

### SOCIAL SCIENCE LIBRARY

Government Documents added 2,634 monographs; 717 serials; 251 microforms; 126 computer files; 1 film/video.

### VISUAL RESOURCES COLLECTION

12,174 images of historic and contemporary architecture from Archivision, Inc., including coverage of important new

buildings such as the Olympic Green in Beijing, the Kansas City Star Printing Plant, and the Caltrans District 7 Headquarters in Los Angeles.

An additional 40,893 architectural images. More than 10,000 new art history images. The Yale Silk Road Database Project—a collection of more than 6,000 images of major sites along the Silk Road trade routes connecting Asia, Africa, and Europe.

### YALE CENTER FOR BRITISH ART REFERENCE LIBRARY

*The John Johnson Collection* (electronic resource)

*The Lumley Inventory and Pedigree: Art Col-*

*lecting and Lineage in the Elizabethan Age* (London, the Roxburghe Club, 2010).

*The Complete Illustrative Works of Thomas Bewick* (London, British Library, 2011).

*Trade in Artists' Materials: Markets and Commerce in Europe to 1700* (London, Archetype, 2010).

*Grote Atlas van de Verenigde Oost-Indische Compagnie, a Comprehensive Atlas of the Dutch United East India Company—Volume 6, Voorburg* (Netherlands, Atlas Maior, 2010).

## MAJOR GIFTS AND GRANTS

The Yale University Library is grateful to the many donors and friends who supported its work and activities during FY 2010–11. This list shows those who gave gifts, bequests, or grants of \$20,000 or more. The Library acknowledges their generosity, along with that shown by other supporters and donors of funds and collections.

Professor Peter M. Baldwin	Mrs. Charles Gwathmey
Mr. J. Frederick Berg, Jr.	Mr. Robert B. Haas
Ms. Arlene Berger	Mr. Thomas Hall
Mr. John R. Block	Mr. Thomas Lowe Hughes
Dr. Thomas Kimball Brooker	Samuel H. Kress Foundation
Mr. Allan E. Bulley III	Timothy D. Mattison, MD
Mr. John P. Callaway	Ms. Karen Hawley Miles
Professor Herbert M. Clark*	Mr. Michael A. Miles, Jr.
The Aaron Copland Fund for Music	Mr. Jerrold I.W. Mitchell
Richard R. Davis, Esq.	Stephen R. Neuwirth, Esq.
Mr. David A. Donnini	Mr. William R. Reid
Mr. Paul A. Downey	Charles H. Revson Foundation, Inc.
Mr. Hugh M. Eaton III	Eve Hart Rice, MD
Mrs. Margot Tweedy Egan	David Alan Richards, Esq.
Founding Fathers Papers	James J. Ross, Esq.
Mr. Joel E. Freedman	Professor G. Thomas Tanselle
Mr. Richard Gilder	University of Virginia
Ravi D. Goel, MD	Mr. Robert L. Werner*
Dr. & Mrs. Neil Greenberg	Mr. Donald Windham*

\* These donors sadly passed away. The Library extends sincere condolences to their families and friends.

## MISSION, VISION, VALUES

### MISSION

The Yale University Library, as one of the world's leading research libraries, collects, organizes, preserves, and provides access to and services for a rich and unique record of human thought and creativity. It fosters intellectual growth and supports the teaching and research missions of Yale University and scholarly communities worldwide.

### VISION

As stewards of and guides to the record of human activity, we ensure and provide:

- An environment of discovery and creativity
- Successful use of the Library in learning, teaching, and intellectual growth
- Effective and integrated access to scholarly resources
- Leadership in an emerging global network of libraries
- An exemplary work environment where members participate, develop, and excel

### VALUES

#### Integrity

- We adhere to the highest standards of fairness, justice, and equality in our work.
- We relate to each other with honesty and candor.
- We maintain a strong work ethic, take responsibility for our work and actions, keep our word, and follow through on our commitments.

#### Respect

- We treat everyone with equal consideration and courtesy.
- We encourage differences in perspective and maintain an openness to new ideas and adventures.
- We engage others with compassion, empathy, and tolerance.
- We are committed to an environment that is inclusive and diverse in order to reach our full potential in intellectual vitality, innovation, and flexibility.

#### Excellence

- We are committed to excellence.
- We employ the best tools, people, and resources to accomplish our work.
- We are dedicated to ongoing learning for individual and organizational growth.
- We continuously improve our processes, procedures, and services to exceed the expectations of those we serve.

#### Creativity and Flexibility

- We meet the changing needs of the library and its users by developing innovative solutions, practices, and services in a creative work environment that supports flexibility, collaboration, and an openness to new ideas and practices, risk taking, and forward thinking.

#### Open Communication

- We promote an environment where communication is encouraged, open, and two-way.
- We share information that keeps stakeholders actively involved in decisions and actions that affect the success of the Library, because we recognize the importance of library-wide participation.

# HIGHLIGHTS OF THE YEAR

## **AFRICAN COLLECTION**

A unique collection of audiotapes by Professor Djibril T. Niane, created during the turbulent years of the Guinean regime of Sekou Toure in the 1970's, were digitized. Significant progress was also made with the Endangered African Languages Grant where 4,300 items were cataloged in 305 African languages.

## **ROBERT B. HAAS FAMILY ARTS LIBRARY**

The Library received 219,443 visitors this year. Service improvements were implemented, including enhanced training regimens for non-librarians and student assistants working at the service desk. The research education program provided 67 sessions to 842 students, representing a 32% increase from the previous year. The Mudd Library collections were surveyed and harvested for removal to the Arts Library stacks in anticipation of the eventual evacuation of collections from the Mudd Library. The extensive Bookplate Collection was moved from Mudd Library to the Arts Library. The Arts Library also assisted the Yale University Art Gallery with planning for the Nolan Education Resource Center.

## **BABYLONIAN COLLECTION**

Approximately 1,000 tablets were kiln-fired and repaired, and 1,500 cuneiform tablets were cataloged. The electronic catalog was updated. The BBC filmed a segment for a 2011 television series *Inventions that changed the World: Ancient Near Eastern Cooking*, which features the Babylonian collection.

## **BEINECKE RARE BOOK & MANUSCRIPT LIBRARY**

The Beinecke Library hosted 373 classes with 4476 students. The 300,000th image was added to the Beinecke Digital Library in May 2011. The catalog tool *Ladybird* was created for generating metadata. The Donald Windham–Sandy Campbell Literature Prizes were established, which will make seven to nine awards annually in the fields of fiction, creative non-fiction, and drama, with the first prizes to be announced in 2013. The Library also completed the first year of a four-year project to process the Beinecke's manuscript backlog.

## **CATALOG AND METADATA SERVICES**

Expanded efforts occurred to repurpose or transform metadata for new uses. In the arena of 'unlocking collections,' work continued on two Arcadia-funded projects. These include the cataloging of African language material and the cataloging of non-Spanish/Portuguese Iberian Peninsula languages. The project to catalog the Yiddish print backlog was completed. The Scandinavian language backlog, which had no bibliographic control, was greatly reduced with completion anticipated for next year. The map cataloging project completed 4,412 sheets (47% of projects) from the Map Department and 10,248 sheets at the Mudd Library (29% of total). Catalog Management staff consulted and provided cataloging for a preservation project devoted to Yiddish satirical and humorous newspapers. The Cataloging Department assisted in the project to transfer a large number of volumes to the Library Shelving Facility – ca. 26,000 volumes, mostly serial publications and rare materials. A project to improve the representation of Yale Library holdings in OCLC and in Google was also undertaken this year.

## **CLASSICS LIBRARY**

Classics Librarian Carla Lukas retired after forty-six years of service, and was succeeded by Colin McCaffrey. Work with the Library's European book vendors will establish unified approval profiles that will supply materials for both the Classics Library and SML's Classics collection. Work began on moving many acquisitions and other technical service functions from the Classics Library to Sterling Memorial Library, reducing duplication of workflows as well as materials. The Classics Library was inventoried for the first time since 1998.

## **DIVINITY LIBRARY**

A strategic planning exercise in conjunction with the Divinity School's long-range planning process was undertaken this year. The Latourette Initiative projects in Gujarat and Hong Kong were completed, and the Yale Divinity School hosted the 21st meeting of the Yale-Edinburgh Group on the History of the Missionary Movement and World Christianity. The Personal Librarian Program entered its second year, and a project to digitize 120,000 pages of mission annual reports got under way with funding from the Arcadia Foundation.

## **DOCUMENT DELIVERY**

Document Delivery saw several major staff changes this year. Carol Jones retired as the head of the department in November 2010, and Grace Epps retired in August 2010, after 30 years of service. Kendall Crilly, Associate University Librarian for Public Services, added Document Delivery to his portfolio on December 1, 2010. Borrow Direct implemented Relais software and the duties of sciences interlibrary loan borrowing were transferred back from Sterling to the sciences areas.

## **EAST ASIA LIBRARY**

A remarkable discovery was made in the fall of 2010 that gave new perspective on the beginnings of the East Asia collection at Yale. A volume of the Confucian "Five Classics," discovered in a backlog prior to a renovation, was found to contain the notation "Yale College Library 1849." While it was already known that Yale was the first college to collect East Asian books, it was thought that an 1868 donation of two Japanese titles was the first such accession. The 2010 discovery pushes the beginnings of academic East Asian collections in the United States back to 162 years ago, 20 years earlier than known previously. There was a renovation of the technical services area on the SML mezzanine, and a major increase of nearly 30% was seen in titles cataloged by the Chinese cataloging team. The productivity level of technical processing increased overall, and 'libguide' software was adopted and developed for the Chinese and Japanese studies resource guides.

## **ELECTRONIC COLLECTIONS**

In collaboration with Yale Information Technology Services, the Library worked on the upgrade of SFX (Yale Links) to version 4.0, improving the timeliness of title and connection data for patrons accessing library e-serials. Another collaborative project with IT developed a method for automatically loading e-resource title information to suppressed bibliographic records connected to their appropriate purchase records in Voyager, allowing a

## HIGHLIGHTS OF THE YEAR

wider range of library staff to accurately determine what content was purchased with an associated e-journal or e-book package. Nisa Bakkalbasi, Head of E-Collections, left Yale, and Caitlyn Lam was hired as the Electronic Resources Support Librarian. An e-book study was commissioned to review e-book workflow practices with recommendations for more efficient management of these resources.

The Library provided access to approximately 1,024,973 online books and 114,199 unique online serial titles, and recorded 7,676,616 million full-text article downloads. In addition, the library spent a total of \$9,149,240 for online resources, with \$1,265,280 in online book purchases and \$7,883,960 in online serials.

### **HISTORICAL SOUND RECORDINGS**

Work was almost completed on the CLIR grant to identify and prepare finding aids for sixteen undocumented collections in HSR, while staff continued to deal with the large backlog of accessions and to prepare appropriate materials for transfer to LSE, as well as to plan for the move from the Mudd Library to West Campus.

### **HUMANITIES COLLECTIONS & RESEARCH EDUCATION**

The Personal Librarian program, the Library's vehicle for serving the research needs of freshmen and sophomores, continued to improve. Thirty-one librarians from across the system provided service to over 2,600 students. A survey of students late in the spring revealed a high level of satisfaction with the program. A planning initiative was led to deliver the OverDrive service to the Yale community, through which e-books and audiobooks can be downloaded to computers, smart phones, and a wide range of handheld devices. A shift was made to a more consultative approach to support students writing senior essays, which proved to be a vast improvement over the classroom approach. The Newspaper and Microform Reading Room oversight was transferred to Access Services.

### **INTERNATIONAL DIGITAL PROJECTS GROUP**

In July 2010, Graziano Krätli, International Digital Projects Librarian, joined the group to direct digitization workflow tasks, including the student team, and to provide support for the Online Access to Research in Education (OARE) project. In January 2011, Khadija El-Hazimy and Fawaz Alwash were hired to listen to and describe the contents of 1,400 Islamic Fundamentalist audio tapes, including composing and proofreading the descriptions in Arabic and English.

The Yale Library and the School of Oriental and African Studies (SOAS), University of London, launched a virtual manuscript collection, thanks to NEH-JISC funding, with selected manuscripts and a set of full-text digital resources including manuscript catalogs and dictionaries in Arabic, Persian, and Western scripts. The AMEEL team completed 80% of the digitization tasks for *al-Jarīdah al-rasmīyah* (الجريدة الرسمية (سورية) and the *Official gazette of the government of Palestine*, gazettes from Syria and Palestine from 1919–1948. Nine academic journals from Iraq were digitized, now accessible to scholars via the AMEEL digital library. The IDP team coordinated the digitization of titles listed in the Joel Sumner Smith catalog published in 1896; that is, approximately

908 titles, or 5,000 volumes. Graziano Krätli liaised with four outsourcing vendors, providing them with customized methods for OCR software to recognize Old Cyrillic script. Thanks to funding from the Arcadia Foundation, approximately two million pages have been digitized. Yasmin Ramadan and Mustafa Abdelwhab applied expertise garnered during the AMEEL projects to the Sumner Smith tasks, especially those dealing with quality control.

Graziano Krätli supervised a team of students who are listening to a collection of 600 Cuban Broadcast tapes made during the 1980s by exiles. With Arcadia Foundation funding, the contents of each tape, described in English and Spanish, will become available to library patrons in early 2012. The IDP team welcomed two interns from ENSSIB (École nationale supérieure des sciences de l'information et des bibliothèques) in France. Julien Sempéré and Léonard Bourlet worked from February 2011 through April 2011 on an assessment of more than 9,000 scholarly books in the American Oriental Society Reading Room.

### **JUDAICA**

Some *shiviti* plaques and manuscripts housed in the Beinecke Library were cataloged. The Yiddish backlog was eliminated, and a large number of manuscripts from the North African Jewish manuscript collection, some satirical and humorous newspapers from Israel from 1920s–1950s and a Yiddish opera manuscript were digitized.

### **LAW**

The online catalog was expanded and the new Law Library website was launched this year. Paging and scan-on-demand services were introduced and the tracking of faculty requests was developed, along with the creation of several databases, the better to support faculty book projects. The Library mourned the loss of former Law Librarian, Morris Cohen, who passed away late in 2010. The Library's 'Book Talk' series continues to be very popular, and the Librarians' 'Spotlight Series' continued to foster lively debate and discussion. Monty, the therapy dog, was introduced into 'circulation' for students to 'check out' and spend time with during high stress periods, and proved to be extremely popular.

### **LEWIS WALPOLE LIBRARY**

This year saw a significant increase in the number of readers served through research assistance and image provision, both on-site in Farmington, and scholars served off-site. Two new master classes took place and 48 volumes of *The Yale Edition of Horace Walpole's Correspondence* were digitized and will be available online.

### **LIBRARY HUMAN RESOURCES**

This year, the staff training and organizational development section of Library Human Resources provided valuable planning and consulting services to the newly forming Center for Science and Social Science Information. They also assisted the Reference and Research Education Committee (RaRE) in developing and executing the committee's work plan, resulting in the identification of economies of scale across access services, the

# HIGHLIGHTS OF THE YEAR

result of which was the i-desk curriculum proposal. A SWOT analysis was conducted for the Digital Library and Information Technology (DLIT), resulting in the creation of a vision, mission, and work plan for the committee.

## MANUSCRIPTS & ARCHIVES

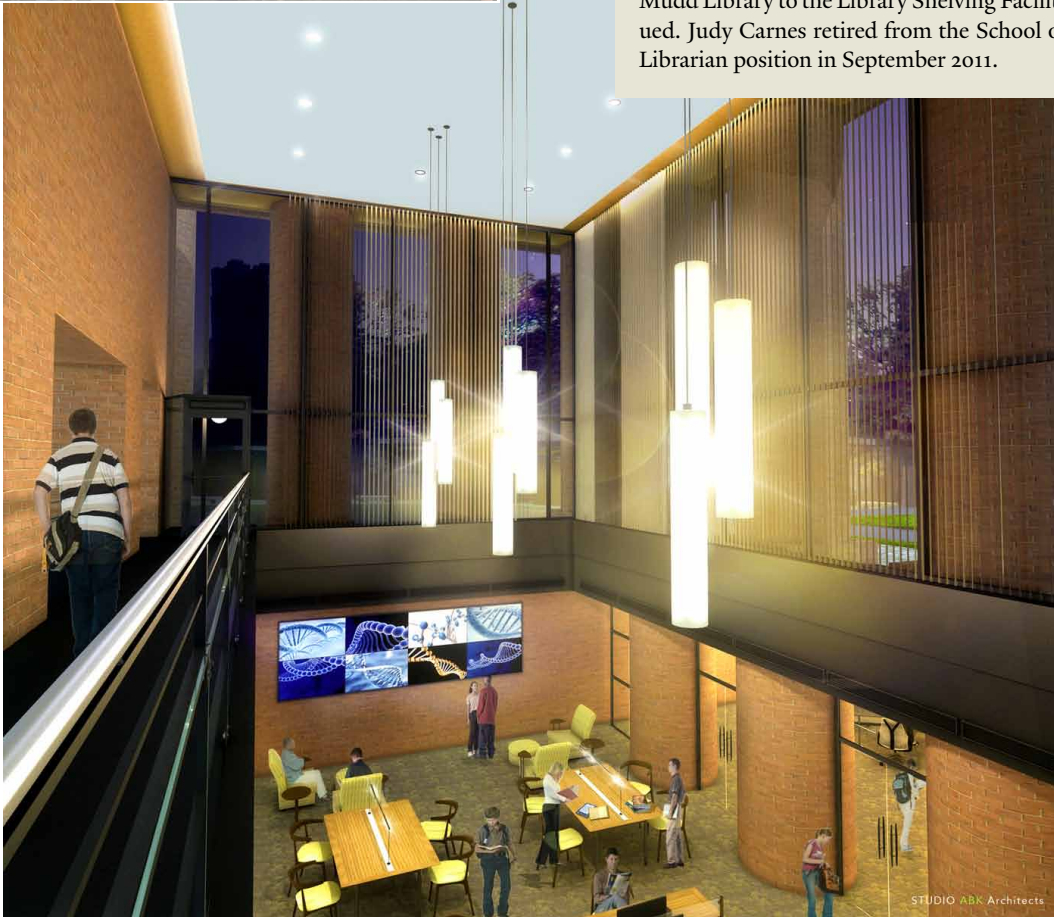
1,131 patrons were served, 5,664 reference inquiries were answered, and 59 instruction sessions were held with 715 participants. The acquisition of the Henry Kissinger papers was successfully negotiated and the new Aeon software was implemented.

## MAP DEPARTMENT

Beinecke photographers assisted the Department this year with digitizing the George Washington American Atlas and other maps, resulting in the book publication, article, and exhibit based on the atlas.

## SOCIAL SCIENCE LIBRARY

Work continued this year on the renovation of the Center for Science and Social Science Information (CSSSI), due to open in early 2012. The transfer project of materials from the Mudd Library to the Library Shelving Facility (LSF) continued. Judy Carnes retired from the School of Management Librarian position in September 2011.



Top: Architect's rendering of the proposed north study space. Bottom: Architect's rendering of the proposed atrium and study space, including a digital media screen

# HIGHLIGHTS OF THE YEAR

## **HARVEY CUSHING AND JOHN HAY WHITNEY MEDICAL LIBRARY**

Medical librarians worked with the Office of Education on the implementation of a new course management system, to support the new iPad initiative. Course integrated instruction was provided by the Nursing, Epidemiology & Public Health, and Education Librarians as part of the *Introduction to Research and Thesis Research* course in YSM, YSN, EPH, and the PA Programs. Almost 6,000 people attended classes, tours, and consultations provided by librarians in subjects as diverse as citation management, PDF management, database searching, and tours of collections and exhibits. Access & Delivery Services staff supported over 40 courses by generating persistent links to over 1900 recommended readings. A team of librarians provided training in research skills to all nursing staff as part of the hospital's receipt of ANCC Magnet Recognition Program status last year. InterLibrary Loan and Scan-on-Demand services delivered over 7,000 journal articles to faculty, staff, and students in the medical center.

## **IRVING S. GILMORE MUSIC LIBRARY**

The *Miscellaneous Letters and Documents* (Misc. Ms. 372) project – including 60 manuscript letters and autographs by composers such as C.P.E. Bach, Haydn, Beethoven, Muzio Clementi, Berlioz, Schumann, Wagner, and Tchaikovsky – was digitized and made available online. Eighteen rare music theory treatises were also digitized. A LibGuide of Digital Theory Treatises for *Theory and Aesthetics* class was also created, as well as guides for the classification of scores stacks and for finding sheet music online. The 2120 catalog records for the audio Database of Recorded Music were loaded into ORBIS.

## **NEAR EAST COLLECTION**

The department worked with the Library of Congress (LC) office in Cairo to receive and process incoming monograph materials. Staff received acquisitions training in the receipt of LC monographic materials.

## **ORAL HISTORY OF AMERICAN MUSIC**

OHAM became officially incorporated into the Yale University Library this year. Vivian Perlis, its founder, retired, and Associate Director Libby Van Cleve was named the Director in her place. The Yale Student Composers Project was initiated.

## **PRESERVATION**

Conservation Services treated 779 bound volumes from all areas of the Library and 413 unbound objects from special collections. They also created protective enclosures and permanent storage mats for 2,426 collection items. The Department reached out to the University and the public through two Preservation Lectures and Preservation Week activities. Work continued with the planning and coordination of the Institute for the Preservation of Cultural Heritage located on West Campus. The Divinity Library's Day Missions collection was surveyed to ensure that the collection could be digitized without damage to the originals. Assistance was provided for 35 exhibitions in 9 separate venues across the Library system. Microfilm was scanned for the Medical and Divinity Libraries and staff reviewed all volumes of the Joel Sumner Smith Collection of Slavic Literature for suitability for scanning – these were subsequently packed and shipped to

a vendor to be processed. Conservation Services assisted with the UV and IR imaging of the Martellus map by Yale University Art Gallery.

## **PROGRAM DEVELOPMENT AND RESEARCH**

Planning began for a process to place browsable storage in building A-21 at West Campus. By the end of the year, browsable storage was being installed in A-21, in spaces previously assigned to the Library. Mudd collections were in turn destined for the LSF instead of West Campus, on an expanded timetable, and technical services remains in Sterling Library, with no imminent plans for relocation.

## **SLAVIC & EAST EUROPEAN COLLECTION**

A gift from Dr. Kristaps Keggi financed the Baltic Library Internship – an opportunity for middle career librarians in the Baltic countries to spend a period of time working in the Yale Library. The department also updated its website during this year.

## **SOUTH & SOUTHEAST ASIA COLLECTION**

Sarah Calhoun was hired as Assistant Curator to oversee the South Asia Collection, and new space was acquired in Room 333 to accommodate this new position as well as the South Asia Acquisitions/Cataloging Assistant.

## **USABILITY & ASSESSMENT**

A project was started to create online maps which link to call numbers in both Yufind and Orbis, helping to give the general location of items in the stacks. These virtual-physical maps decreased the numbers of questions about call number locations at the Sterling Information Desk by 20%.

A cross-training program was created for the Ask Yale Library service, and the software running the system, LibAnswers, was implemented and integrated with the library's website and Facebook and Twitter accounts.

## **VISUAL RESOURCES COLLECTION**

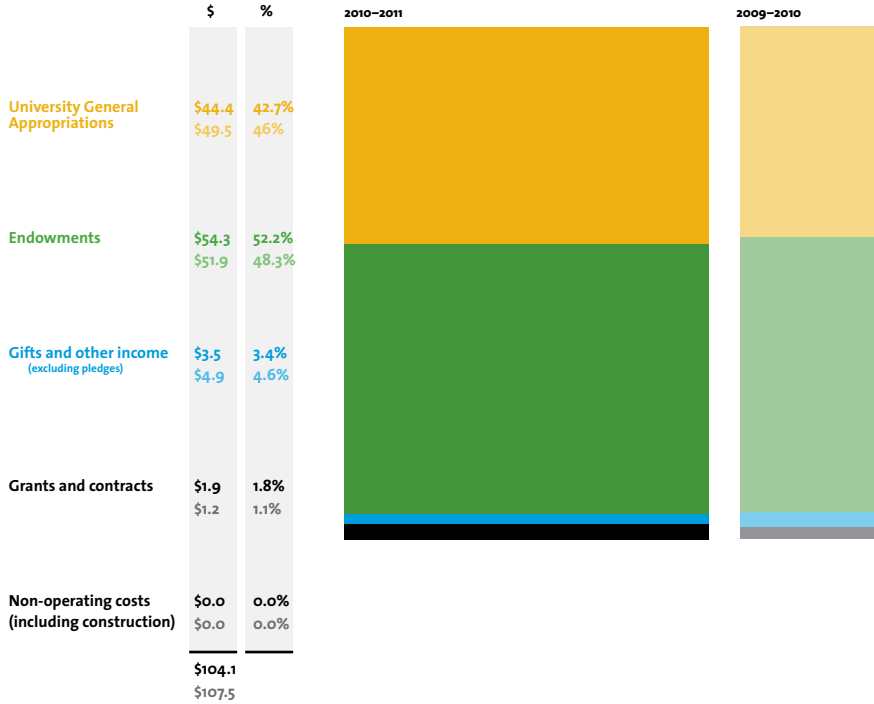
The Visual Resources collection staff assisted Manuscripts and Archives, the Divinity School Library, and the Music Library in processing materials to ContentDM, the digital collection management software developed by OCLC. They also joined with the Beinecke Rare Book and Manuscripts Library, Manuscripts and Archives, and the Lewis Walpole Library to create a state-of-the-art cataloging environment developed by the Library's software programmers.

## **YALE CENTER FOR BRITISH ART LIBRARY**

The Center launched its new online cross-collections search feature that allows users on the YCBA website to search the Center's art collections, rare books and manuscripts, and reference materials, in one seamless search. Molly Dotson finished her term as the Kress Fellow in Art Librarianship in December. She worked primarily in art reference services but also created an online research guide for the Library.

# FACTS AND FIGURES

## SOURCE OF FUNDS millions of dollars



## LIBRARY STATISTICS

- 12,977,024  
Volumes in the Library
- 7,676,616  
Full-text article requests
- 5,432,876  
Searches in the online catalog
- 3,463,901  
Visits to the Library's website
- 920,485  
Items charged to readers
- 195,061  
Volumes added to the collection
- 104,537  
Manuscript and archival holdings  
(linear feet)
- 144,727  
Serials (journals, periodicals, etc.)  
received
- 29,914  
Reference transactions
- 94,707  
Electronic serials purchased
- 32,009  
Items treated by Preservation  
department
- 20,989  
Print serials purchased
- 746  
Instructional sessions, workshops,  
and tutorials offered
- 329  
Clerical and technical staff
- 224  
Managerial and professional staff
- 66  
Student assistants

## EXPENDITURES millions of dollars

